

Designed for Business

Built for performance

Every business needs a reliable business partner

The L5000 mono laser series helps you maximise print efficiency and minimise costs so you can make the most of your investment



MFC - L5700DN



MFC - L5900DW



HL - L5200DW

Enhance your productivity and efficiency
with a high-performance mono laser series

The printer that means business

Designed in Japan, the Brother L5000 mono laser series is power-packed with features to boost productivity; offering the best possible solution for your business needs.





Built to meet the challenges of your business

Discover how the Brother L5000 Professional Black & White Laser Printers can take your productivity to the next level

Built for Reliability

Print as much as you need with a robust and dependable machine with a recommended monthly print cycle of up to 3,500 pages. All three models in the range include a 5-year on-site warranty.

Built for Savings

All models in the range ship with a super high-yield inbox toner allowing you to print up to 8,000 pages¹. Choose from different toner settings to increase your savings when printing.

Built for Productivity

Spend less time reloading paper with the default paper tray of 250 sheets, 50 sheet multi-purpose tray PLUS optional paper tray upgrades of 520 x 2 bringing the total paper capacity up to a maximum of 1,340 sheets.

Further maximise productivity with these features:

- High print speeds of up to 40ppm
- Up to 56ipm high speed 2-sided scanning²
- Scan and copy multiple pages with a high capacity 70 sheets Automatic Document Feeder³ (ADF)

¹ Applicable to TN-3467 only, in accordance with ISO/IEC 19752

² Applicable to mono scanning for MFC-L5900DW only, in accordance with ISO/IEC 17991

³ Applicable to MFC-L5900DW only

70 Sheet
Dual CIS

Automatic
Document
Feeder



50 Sheet
multi-purpose
trays

250 Sheet
default
paper tray

Paper Level
Indicator

520 x 2
Optional
paper tray(s)

Optional trays require
additional purchase

MFC-L5900DW
Black & White Laser Multifunction Printer



USB direct print*



9.3cm LCD
Touchscreen*



User-friendly
control panel*



Wireless connectivity**

*Applicable to MFC models only

**Applicable to HL-L5200DW and MFC-L5900DW only

Easily manage your Brother network-connected products from one central location using BRAdmin Professional Software.

Simplify business operations and safeguard your documents

This network management tool allows remote configurations, monitoring of useful information such as page counts, toner and drum status. With the option of setting print quotas per user, you can better control printing costs. Instant notification of printer downtime also lets you attend to the problem before it impacts productivity. What's more, this software features a suite of security solutions to assure you of your documents' confidentiality.

Created to prioritise security

Secure Function Lock 3.0*



Gives greater control over group or individual usage by allowing an administrator to limit printer functions.

Internet Protocol Security (IPSec)*



Encrypts print jobs from the user's computer to the printers.

Print Archive



Saves a PDF copy of every print job in a set location for easy E-Documentation

Secure Reset



Removes stored data when reverting the printer to original settings so that company data remains protected

Active Directory**



Enable easy central management of user login authentication in an organisation

*Applicable to all models

** Applicable to MFC-L5700DN and MFC-L5900DW only

Peace of Mind Guaranteed

When you purchase a Brother printer and our genuine inks or toners, we'll support you every step of the way with our FREE 5-year* warranty commitment. YOU DO NOT NEED TO REGISTER YOUR PRODUCT, our warranty is automatic when you purchase your Brother product. With Brother, you can have peace of mind that we are always "At Your Side".



To keep your Brother printer running in optimal condition we recommend that you use only Brother Genuine Consumables, this will ensure you automatically enjoy our exclusive 5-year warranty.

*Effective 1 June 2020. Only valid for purchases in South Africa.

Flexible workflow solutions customised for your business

Tailored solutions that help you meet your business requirements

Brother Special Solutions Customisation (SSC)

Through careful collaborations, we help you to modify your Brother products or design the best solution that improves your workflow functions.

- Customised software, print drivers and firmware
- Automating installation and deployment of print drivers and software packages
- Pre-configured devices prior to shipment - to ensure they arrive ready to operate, right out of the box.

The Brother Solutions Interface (BSI)

A web-based service platform that allows software developers to easily create customised solutions to help you overcome specific business challenges.

- Integrating cost tracking applications for print management
- Securing access to device functions, user interface messages and support for network authentication
- Improved document management, security, workflow and e-forms solutions.



Whatever your business needs may be, there's a suitable monochrome laser machine for you.

Professional Line-up for your business

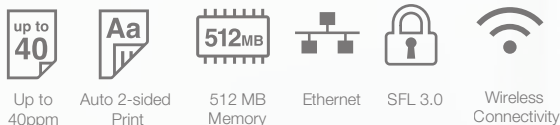
Built for Mobile Convenience

Integrating mobile devices into your workflow has never been easier. With Brother iPrint&Scan, Apple AirPrint® and Google Cloud Print™, you can print wirelessly straight from your mobile device.

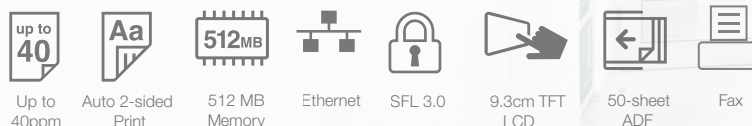
- Print JPEGs and PDFs
- Scan to JPEG
- Preview Copy / Fax
- Save to iCloud for Apple products



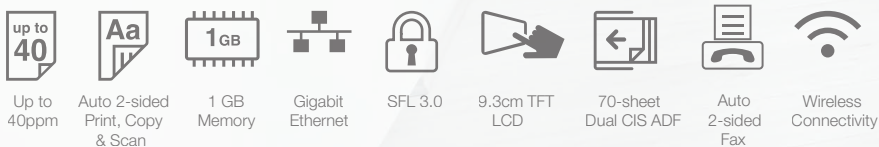
HL-L5200DW



MFC-L5700DN



MFC-L5900DW



All print speeds are in accordance with ISO/IEC 11160-2:1996

Supplies available with this range

Approx yields based on ISO/IEC 19752. Declared drum yield based on 3 page/job.



TN-3437
8k pages
High-Yield Toner



TN-3467
12k pages
Super High-Yield Toner



DR-3405
50k pages
Drum

	Single-Function HL-L5200DW	Multi-Function MFC-L5700DN
Key Functions	Auto 2-sided Print, Network, Wireless	Auto 2-sided Print only, Copy, Scan, Fax
PRINT FUNCTIONS		
Print Speed	Up to 40 ppm	Up to 40 ppm
Duty cycle (A4 print, monthly)	50,000 maximum / 3,500 recommended	50,000 maximum / 3,500 recommended
Print Resolution	Up to 1200 x 1200 dpi	Up to 1200 x 1200 dpi
First Print Out Time (Ready)	Less than 7.2 secs	Less than 7.2 secs
Auto 2-sided Features	Auto 2-sided Print	Auto 2-sided Print
Special Print Functions	N-in-1 Printing Poster Printing (Windows® only) Watermark Printing (Windows® only) Header-Footer Printing (Windows® only), Secure Print	N-in-1 Printing Poster Printing (Windows® only) Watermark Printing (Windows® only) Header-Footer Printing (Windows® only), Secure Print
Print Language	PCL6, BR-Script3, IBM Proprinter XL, Epson FX-850, PDF Version 1.7, XPS Version 1.0	PCL6, BR-Script3, IBM Proprinter XL, Epson FX-850, PDF Version 1.7, XPS Version 1.0
Quiet Mode	Yes	Yes
COPY FUNCTIONS		
Copy Speed	-	Up to 40 cpm
Copy Resolution	-	1200 x 600dpi
Reduction / Enlargement Ratio	-	25% - 400% in 1% increments
Multi Copy / Stack	-	Up to 99 copies
SCAN FUNCTIONS		
Scan Type	-	Monochrome / Colour - ADF or Flatbed
Dual Scanner (Method)	-	No (CIS)
Resolution (Optical / Enhanced)	-	Up to 1200 x 1200 dpi / Up to 19,200 x 19,200 dpi
Scan Functions	-	Scan to Email, Image, OCR, File, Email Server (Download only) FTP, SFT, USB and Network (Windows® only)
Scanning Speed (Mono/Color) Multiple sheets	-	Up to 24/20 ipm**
FAX FUNCTIONS		
Modem Speed	-	33.6Kbps Super G3
Transmission Speed (Mono)	-	Approx. 2.5 Secs (ITU-T Test Chart, Std Resolution, JBIG)
Memory Transmission / Out-of paper reception	-	Up to 500 pages (ITU-T Test Chart, Std Resolution, JBIG)
Speed Dial	-	300 Locations
Group Dials	-	20 Groups
Broadcasting	-	350 Locations
PC Faxing	-	Windows®, Mac® [FaxShare Software by Brother], Linux® [LPR / CUPS PC-FAX Send Driver] Receiving (Available for Windows®)
Other Fax Features	-	Internet Fax*** (Simple mode), Auto Reduction, Delay Timer (Up to 50), Error Correction Mode, Fax Retrieval, Remote Access, Quick Scan (Approx. 2.5 Sec), Fax Forward
PAPER HANDLING		
Input Tray (Standard)	250 Sheets	250 Sheets
Multi-Purpose Tray / Manual Slot	50 Sheets	50 Sheets
Output Tray (Face Down)	150 Sheets	150 Sheets
Optional Paper Tray (Input)	520 sheets (LT-6500) x 2 trays (Max. 1,040 sheets)	520 sheets (LT-6500) x 2 trays (Max. 1,040 sheets)
Automatic Document Feeder (ADF)	-	50-Sheets
Media Size (Standard Tray)	A4, Letter, A5, A5 (Long Edge), A6, Executive, Legal, Folio	A4, Letter, A5, A5 (Long Edge), A6, Executive, Legal, Folio
OTHERS		
Memory	512MB	512MB
Processor Speed	Cortex-A9 (800MHz)	Cortex-A9 (800MHz)
Display	16 characters x 1 line LCD	9.3cm TFT Colour LCD
Windows® (Host-Based)	Windows® Vista, XP, 7, 8, 8.1, 10	Windows® Vista, XP, 7, 8, 8.1, 10
Apple Mac®	Mac OS X v10.8.5, 10.9.x, 10.10.x (Download only)	Mac OS X v10.8.5, 10.9.x, 10.10.x (Download only)
Linux® (Linux® Printer Driver)	CUPS, LPD/LPRng (x86/x64 environment)	CUPS, LPD/LPRng (x86/x64 environment)
Universal Printer Driver	Yes (BRScript / PCL)	Yes (BRScript / PCL)
Connectivity / Networking	Built-in Wireless 802.11b/g/n - Built-in Ethernet 10/100 Base-TX Hi-Speed USB 2.0 Airprint, Google cloud print WIFI Direct	Built-in Ethernet 10/100 Base-TX Hi-Speed USB 2.0 Airprint, Google cloud print
Power Consumption (Sleep/Ready)	6.5W/32W	7.5W / 34W
Power Source	220-240V, AC 50/60Hz	220-240V, AC 50/60Hz
Webconnect (Brother's App)	-	Yes
SUPPLIES		
Inbox Toner	8,000 pages*	8,000 pages*
High-Yield Toner	TN-3437: Approximately 8,000 pages*	TN-3437: Approximately 8,000 pages*
Super High-Yield Toner	TN-3467: Approximately 12,000 pages*	TN-3467: Approximately 12,000 pages*
Drum	DR-3405: Approximately 50,000 pages* (3 pages/job)	DR-3405: Approximately 50,000 pages* (3 pages/job)
DIMENSIONS & WEIGHT		
Machine Dimensions (W X D X H)	373 x 388 x 255 mm	435 x 427 x 486 mm
W/O Carton and with Toner and Drum	10.7KG without Supplies 11.1KG with supplies	16.5KG without Supplies 16.5KG with supplies
SUPPORT		
Warranty	5 year on site	5 year on site

* In accordance with ISO/IEC 19752.

** In accordance with ISO/IEC 17991

*** Optional free download available from <http://solutions.brother.com>

Multi-Function
MFC-L5900DW

Auto 2-sided Print, Copy, Scan, Fax, Network, Wireless

Up to 40 ppm

50,000 maximum / 3,500 recommended

Up to 1200 x 1200 dpi

Less than 7.2 secs

Automatic 2-sided Print

N-in-1 Printing

Poster Printing (Windows®)

Watermark Printing (Windows®)

Header-Footer Printing (Windows®), Secure Print

PCL6, BR-Script3, IBM Proprinter XL, Epson FX-850, PDF Version 1.7, XPS Version 1.0

Yes

Up to 40 cpm

1200 x 600dpi

25% - 400% in 1% increments

Up to 99 copies

Monochrome / Colour - ADF or Flatbed

Yes (Dual CIS)

Up to 1200 x 1200 dpi / Up to 19,200 x 19,200 dpi

Scan to Email, Image, OCR, File, Email Server, FTP, SFT, USB and Network (Windows® only)

Up to 28/20 ipm**

33.6Kbps Super G3

Approx. 2.5 Secs (ITU-T Test Chart, Std Resolution, JBIG)

Up to 500 pages (ITU-T Test Chart, Std Resolution, JBIG)

300 Locations

20 Groups

350 Locations

Windows®, Mac® [FaxShare Software by Brother], Linux® [LPR / CUPS PC-FAX Send Driver] Receiving (Available for Windows®)

Duplex Fax Send, Internet Fax (Simple mode), Auto Reduction, Delay Timer (Up to 50), Error Correction Mode, Fax Retrieval, Remote Access, Quick Scan (Approx. 2.5 Sec), Fax Forward

250 Sheets

50 Sheets

150 Sheets

520 sheets (LT-6500) x 2 pcs (Max. 1,040 sheets)

70-Sheets

A4, Letter, A5, A5 (Long Edge), A6, Executive, Legal, Folio

1GB

Cortex-A9 (800MHz)

9.3cm TFT Colour LCD

Windows® Vista, XP, 7, 8, 8.1, 10

Mac® OS X v10.8.5, 10.9.x, 10.10.x (Download only)

CUPS, LPD/LPRng (x86/x64 environment)

Yes (BRScript / PCL)

Built-in Wireless 802.11b/g/n

Wi-Fi Direct, Built-in Gigabit Ethernet 10Base-T/100Base-TX/1000 Base-T

Hi-Speed USB 2.0

Airprint, Google cloud print

7.5W / 34W

220-240V, AC 50/60Hz

Yes

8,000 pages*

TN-3437: Approximately 8,000 pages*

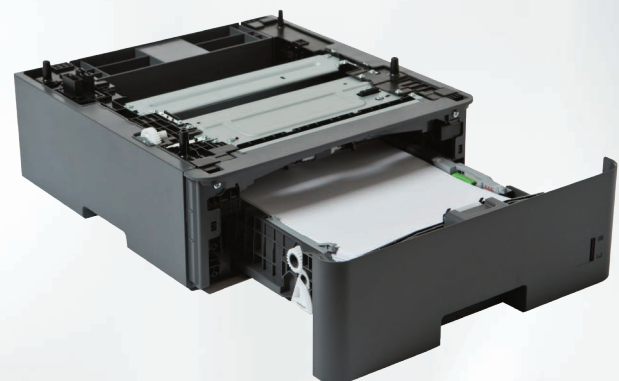
TN-3467: Approximately 12,000 pages*

DR-3405: Approximately 50,000 pages*

495 x 427 x 486 mm

17.7KG with supplies

5 year on site



LT - 6500

520 sheet optional paper tray
supports up to 2 x 520 sheet paper tray

Optional trays require additional purchase



Brother strongly recommends the use of genuine Brother consumable products only. Benefits include better quality print, greater yields per consumable, protection of your machine from damages and achievement of optimum performance. As a precaution, please note that your machine warranty may not cover any damages arising from the use of non-genuine consumables.



One-stop centre for free downloadable templates

Microsoft, Windows, the Windows logo and/or other Microsoft products referenced herein are either registered trademarks of Microsoft Corporation in the U.S. and/or other countries. Brother and its logo are trademarks of Brother Industries Ltd., Japan. All specifications are subject to change without notice. All registered trademarks referenced herein are the property of their respective companies. Brother International Corporation, Japan.



Brother International South Africa

96 Sovereign Drive, Route 21 Corporate Park, Irene
Tel: 0861 BROTHER Fax: +27 (0) 12 - 345 3886

www.brother.co.za <http://solutions.brother.com>



Working with you for a better environment
www.brotherearth.com