



Bullalgo Trading Systems, Inc.
Orion Bollinger Band (BB) Threshold Study Indicators
User Manual
Version 1.0
Manual Revision 20150917

Orion Bollinger Band (BB) Threshold Study Indicators

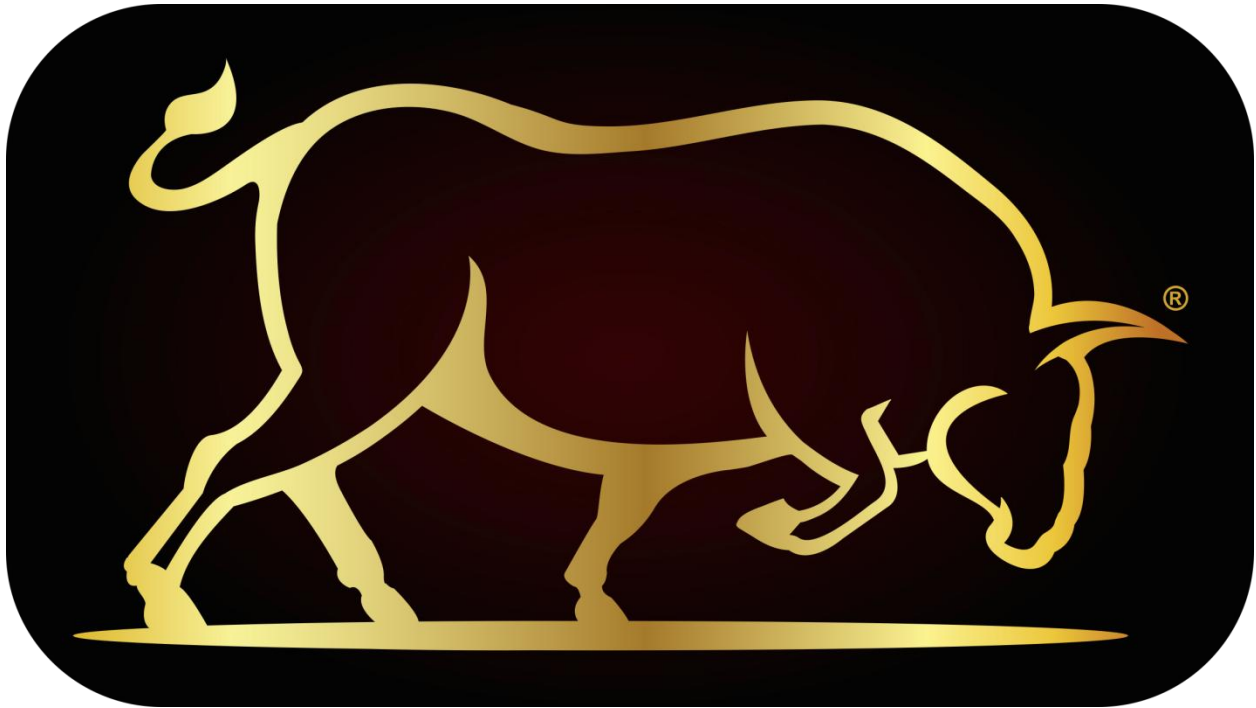
The ***Orion Bollinger Band (BB) Threshold Study Indicators*** are a three separate indicator package that all have many functions and uses. These three indicators, ***Orion BB Threshold Attack Gauge***, ***Orion BB Threshold PS Gauge***, and ***Orion BB Threshold RS Gauge*** are all used in conjunction with the ***Bollinger Band Threshold Defense*** section inside the ***Orion*** program. ***Bollinger Band Threshold Defense*** can control and be setup to do many things such as exit a position that has pierced the bands, reverse a position once the bands have been pierced, ride the bands for huge gains and so much more.



Product Support, helpful tips, and other Bullalgo product users are hanging out in Bullalgo's trading forums "**The War Room**" located at www.bullalgotradingsystems.com. Come visit us!

Ryan Fuda

President/Developer
Bullalgo Trading Systems, Inc.
www.bullalgotradingsystems.com



phpBB™ The War Room
creating communities Bullalgo Trading Systems, Inc.

Forums Members

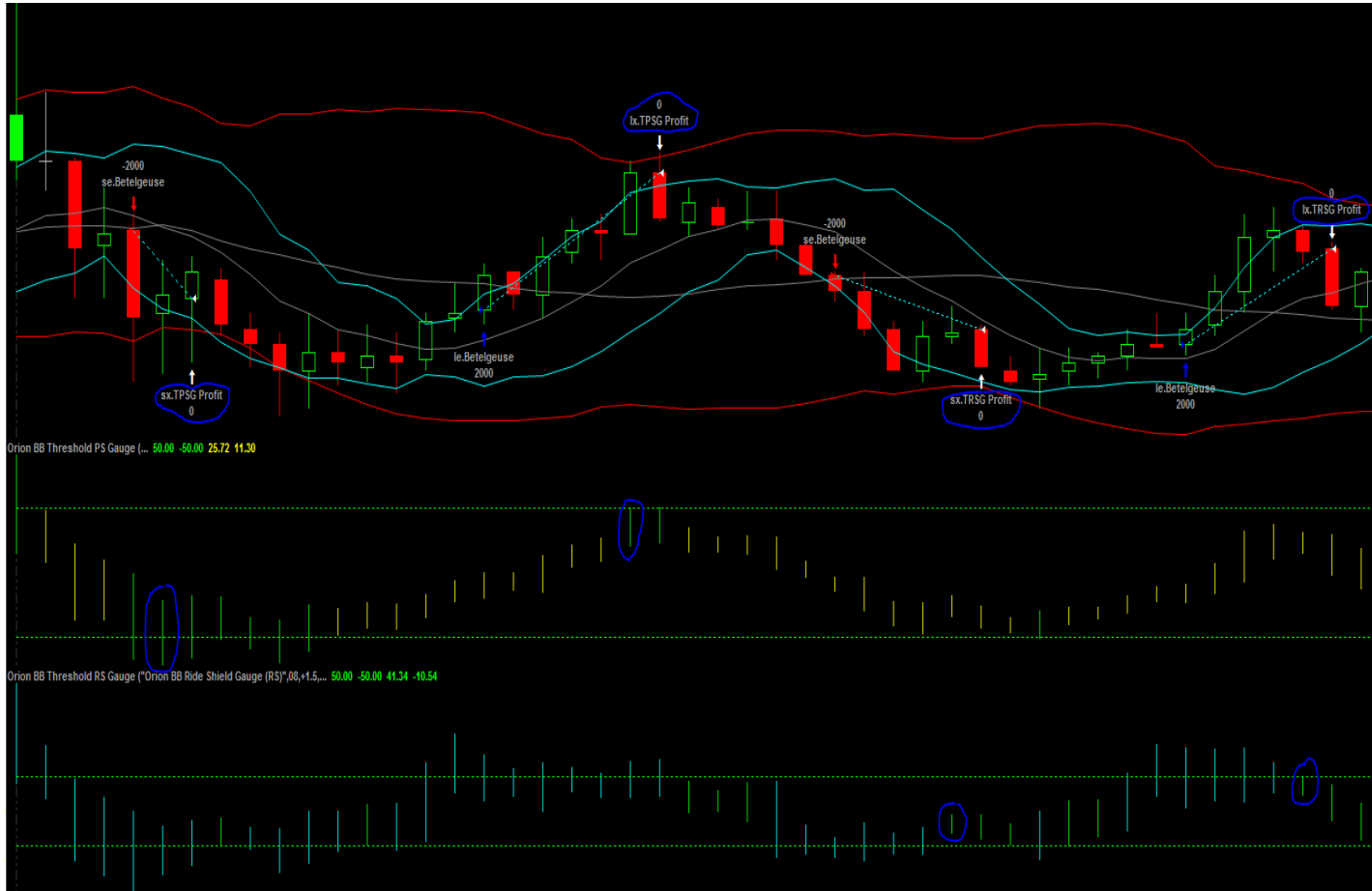
Search Login Register

Board index

- General Forum
 - General Forum
- Orion Equities
 - Basic
 - Intermediate
 - Professional
- Orion Futures
 - Basic
 - Intermediate
 - Professional
- Orion Swing Equities
 - Basic
 - Intermediate
 - Professional
- Orion Swing Futures

www.bullalgotradingsystems.com

Orion Bollinger Band Threshold Defense Indicators



The Bollinger Band Threshold Defense section filters Orion by using Bollinger Bands to control Entries and Exits. This section is split into two subsections, one for Entries and the other for Exits.

***"Redefining automated trading systems for everyone!
Not just for the select few any longer..."***

(Entire BB Thresh Section explained)

Important Note: The Bollinger Band Threshold Defense section uses positive (+) and negative (-) values. Anything above the zero line in the indicator is entered as a positive value. Anything below the zero line in the indicator is entered as a negative value.

BB_Thresh_Master_Off_On = BB Threshold Defense Master Off/On Switch. "0=Off; 1=On". If this input is set ≤ 0 then *BB_Thresh_Master_Off_On* completely disables the entire BB_Thresh section. BB_Thresh is enabled if the input value is ≥ 1 .

Orion BB Threshold Attack Gauge Indicator - Filters Entries.

BBThreshAttack Filter & BBRedZone_Attack_Filter - The *BBThreshAttack Filter* & *BBRedZone_Attack_Filter* - Stop new Entries from being executed when Anxiety thresholds have been breached.

0=Filter Off - Allows all Entries to be executed when "Orion BB Threshold Attack Gauge" thresholds have been breached. (Turns off the Orion BB Threshold Attack Gauge).

1=Filter Betel. - Prevents only Betelgeuse Entries from being executed when Orion BB Threshold Attack Gauge thresholds have been breached.

2=Filter Recal. - Prevents only Recalibration Entries from being executed when Orion BB Threshold Attack Gauge thresholds have been breached.

3= Filter All - Prevents all Entries from being executed when Orion BB Thresh Attack Gauge thresholds have been breached. (E.g. Betelgeuse, Recalibration, etc.)

BB_TAG_Length = Bollinger Band Length.

BB_TAG_Devs_Up = Bollinger Band deviations up.

BB_TAG_Devs_Dn = Bollinger Band deviations down.

BBRedZone_Bypass_Off_On = Prevents all Exits inside the *BB_Thresh RedZone* when turned 1=On .

BBRedZone_HighThresh_Int = This input sets the Red upper threshold line in the Orion BB Threshold Attack Gauge Indicator for a Long position. Once this user defined threshold is breached and inside both of the Red thresholds then the *Attack_Filter_Mode* setting becomes active. (0 = Input is Off).

BBRedZone_LowThresh_Int = This sets the Red lower threshold line in the Orion BB Threshold Attack Gauge Indicator for a Short position. Once this user defined threshold is breached and inside both of the Red thresholds then the *Attack_Filter_Mode* setting becomes active. (0 = Input is Off).

Orion BB Threshold Profit Shield "PS" Gauge Indicator -Bollinger Band Extreme Threshold Exits

BB_TPSG_Length = Bollinger Band Length.

BB_TPSG_Devs_Up = Bollinger Band deviations up.

BB_TPSG_Devs_Dn = Bollinger Band deviations down.

lx_BB_ProfitShield_Int = This input sets the upper threshold of the Orion BB Threshold PS Gauge for a Long position. Once the upper Orion BB Threshold PS Gauge threshold has been breached with a Closed bar, an Exit signal is generated for the current position at the Open of the next Bar.

sx_BB_ProfitShield_Int = This input sets the lower threshold of the Orion BB Threshold PS Gauge for a Short position. Once the lower Orion BB Threshold PS Gauge threshold has been breached with a Closed bar, an Exit signal is generated for the current position at the Open of the next Bar.

Orion BB Threshold Ride Shield "RS" Gauge Indicator -Bollinger Band Ride Threshold Exits

BB_TRSG_Length = Bollinger Band Length.

BB_TRSG_Devs_Up = Bollinger Band deviations up.

BB_TRSG_Devs_Dn = Bollinger Band deviations down.

lx_BB_RideShield_Int = This Input is designed to ride a Bollinger Band Long position move. ("*Riding the Bands*"). It will hold a Long position until the Green upper threshold is breached from above the threshold down and inside of the threshold on a Closed Bar basis.

sx_BB_RideShield_Int = This Input is designed to ride a Bollinger Band Short position move. ("*Riding the Bands*"). It will hold a Short position until the Green lower threshold has been breached from below the threshold up and inside of the threshold on a closed bar basis.

lx_BB_RideBars_Int = Enter how many Cyan indicator Bars outside of the *lx_BB_RideShield_Int* threshold (top Green dotted line) are to be breached for a Long *TSG Ride* Exit.

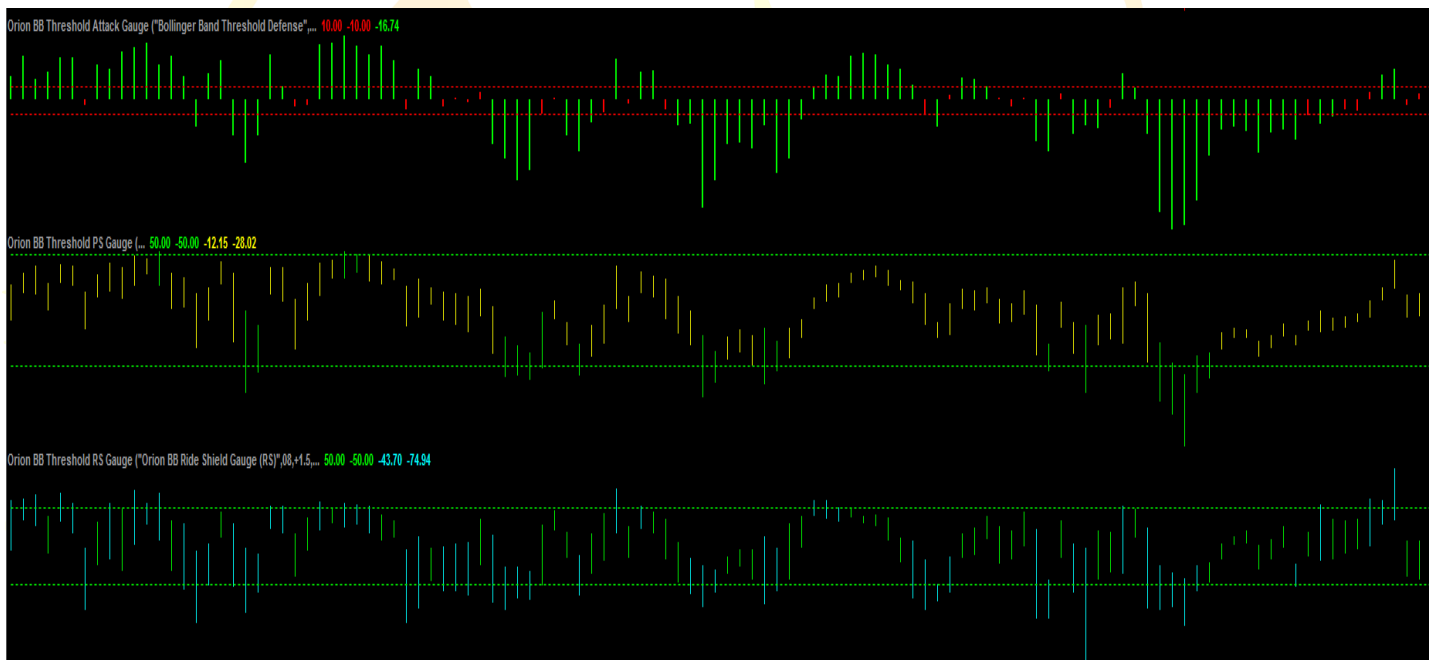
lx_BB_RideBars_Int Example: Entering 2 in the input - After 2 bars have closed above the top dotted Green threshold the *lx.TSG Ride* Exit becomes active. Orion will then Exit the trade after a closed Cyan indicator Bar has taken place back within the top dotted Green threshold of the indicator.

sx_BB_RideBars_Int = Enter how many Cyan indicator bars outside of the **sx_BB_RideShield_Int** threshold (bottom Green dotted line) are to be breached for a Short *TSG Ride* Exit.

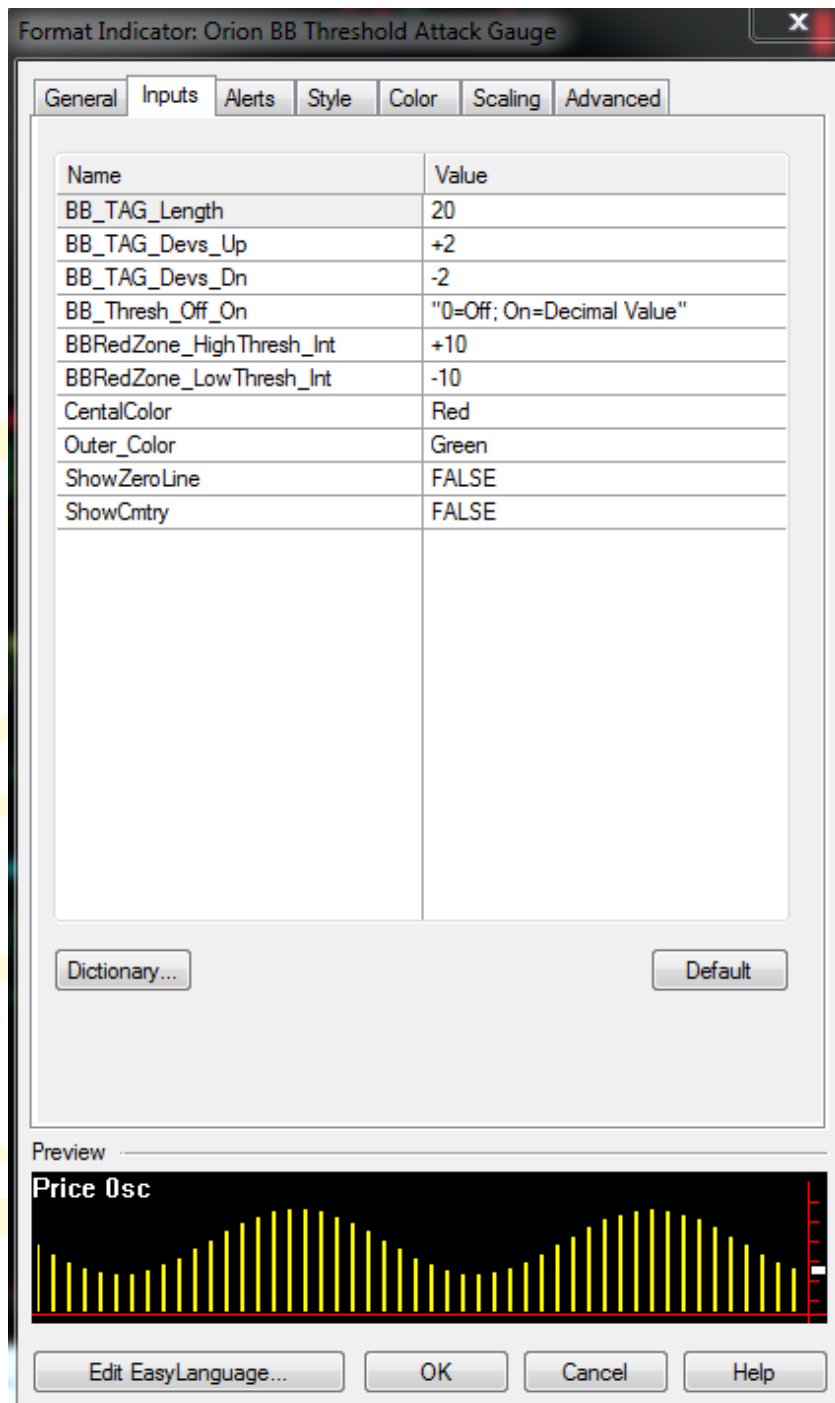
sx_BB_RideBars_Int Example: Entering 2 in the input - After 2 bars have closed below the bottom dotted Green threshold the *sx.TSG Ride* Exit becomes active. Orion will then Exit the trade after a closed Cyan indicator Bar has taken place back within the bottom dotted Green threshold of the indicator.

lx_BB_RideNoExit_Off_On = When this input is turned 1=On , it turns off all other Long Exits in Orion except *lx_BB_ProfitShield_Int* to allow for a full ride of the Bollinger Band to maximize profit potential.

sx_BB_RideNoExit_Off_On = When this Input is turned 1=On , it turns off all other Short Exits in Orion except *sx_BB_ProfitShield_Int* to allow for a full ride of the Bollinger Band to maximize profit potential.



Orion BB Threshold Attack Gauge Study Indicator Set Up



Simply input the same values you have in your Format Strategies Inputs window to setup the indicator.

To get to this window, be sure to install the indicator in Orion if not already installed. Next, double click one of the indicator's dots on the chart, or click Format >Analysis Techniques>select Orion BB Threshold Attack Gauge Indicator>Format.

Orion BB Threshold PS Gauge Study Indicator Set Up

Format Indicator: Orion BB Threshold PS Gauge

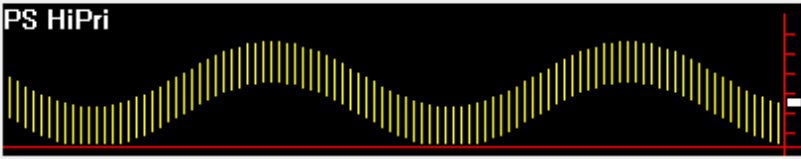
General Inputs Alerts Style Color Scaling Advanced

Name	Value
BB_TSG_PS_Length	20
BB_TSG_PS_Devs_Up	+2
BB_TSG_PS_Devs_Dn	-2
BB_PS_Thresh_Off_On_Note	"0=Off; On=Decimal Value"
lx_BB_ProfitShield_Int	+50
sx_BB_ProfitShield_Int	-50
Outer_Color	Green
Inner_Color	Yellow
Do_Clip	FALSE
ShowCmtry	FALSE

Dictionary... Default

Preview

PS HiPri

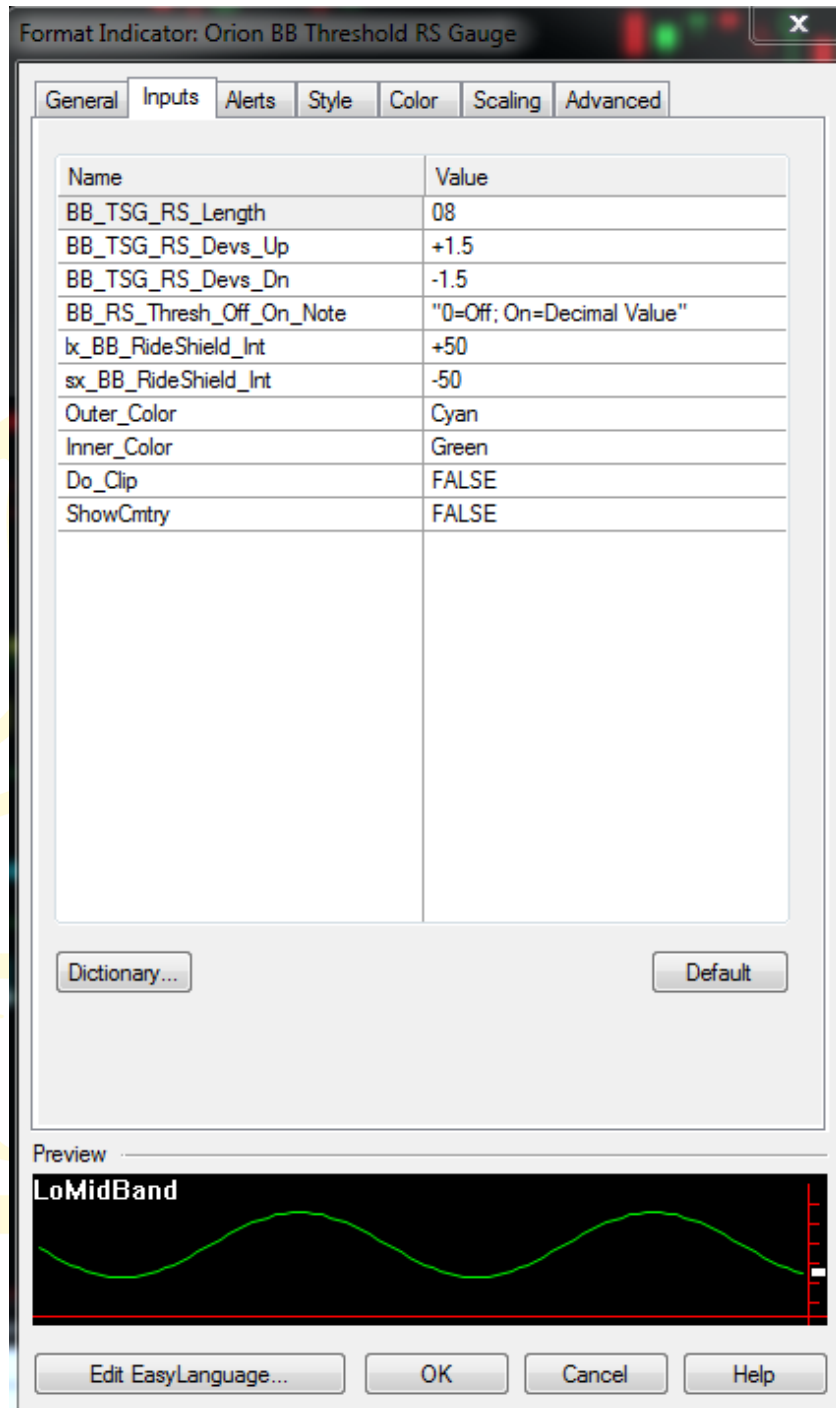


Edit EasyLanguage... OK Cancel Help

Simply input the same values you have in your Format Strategies Inputs window to setup the indicator.

To get to this window, be sure to install the indicator in Orion if not already installed. Next, double click one of the indicator's dots on the chart, or click Format >Analysis Techniques>select Orion BB Threshold PS Gauge Indicator>Format.

Orion BB Threshold RS Gauge Study Indicator Set Up



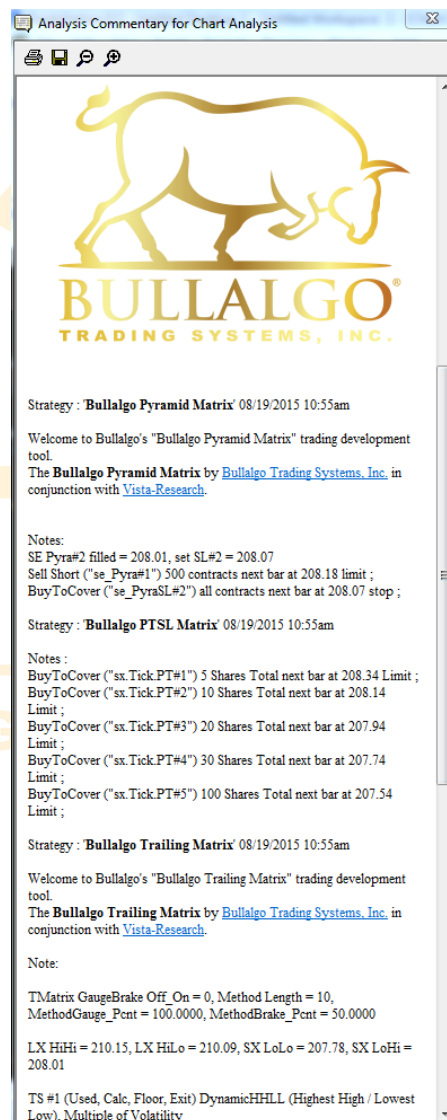
Simply input the same values you have in your Format Strategies Inputs window to setup the indicator.

To get to this window, be sure to install the indicator in Orion if not already installed. Next, double click one of the indicator's dots on the chart, or click Format >Analysis Techniques>select Orion BB Threshold RS Gauge Indicator>Format.

Bullalgo Analysis Commentary



All Bullalgo products come equipped with programmed *Analysis Commentary* for visual play by play action of the product being used. At the bottom of any Bullalgo Trading Systems, Inc. product input list the user may set Analysis Commentary to "True" or "On". Then click the Analysis Commentary icon on the toolbar in TradeStation (pictured above). Next, click any bar in a chart and the Analysis Commentary window will display important information including what Entries or Exits are coming soon, Stop Losses approaching, Custom Indicator Parameters and so much more.





"Making Trading Dreams a Reality"

Past trading results are not indicative of future results. Past price patterns may not repeat in precisely the same way and subsequently trading systems may not achieve profits/losses similar to past actual or hypothetical results. There are just too many variables in the markets to accurately forecast future results for any system or trader.

CFTC DISCLAIMER

HYPOTHETICAL PERFORMANCE RESULTS HAVE MANY INHERENT LIMITATIONS, SOME OF WHICH ARE DESCRIBED BELOW. NO REPRESENTATION IS BEING MADE THAT ANY ACCOUNT WILL OR IS LIKELY TO ACHIEVE PROFITS OR LOSSES SIMILAR TO THOSE SHOWN. IN FACT, THERE ARE FREQUENTLY SHARP DIFFERENCES BETWEEN HYPOTHETICAL PERFORMANCE RESULTS AND THE ACTUAL RESULTS SUBSEQUENTLY ACHIEVED BY ANY PARTICULAR TRADING PROGRAM.

ONE OF THE LIMITATIONS OF HYPOTHETICAL PERFORMANCE RESULTS IS THAT THEY ARE GENERALLY PREPARED WITH THE BENEFIT OF HINDSIGHT. IN ADDITION, HYPOTHETICAL TRADING DOES NOT INVOLVE FINANCIAL RISK, AND NO HYPOTHETICAL TRADING RECORD CAN COMPLETELY ACCOUNT FOR THE IMPACT OF FINANCIAL RISK IN ACTUAL TRADING CONDITIONS. IN ADDITION THE ABILITY TO WITH STAND LOSSES OR TO ADHERE TO A PARTICULAR TRADING PROGRAM IN SPITE OF TRADING LOSSES ARE MATERIAL POINTS WHICH CAN ALSO ADVERSELY AFFECT ACTUAL TRADING RESULTS. THERE ARE MANY OTHER FACTORS RELATED TO THE FINANCIAL MARKETS IN GENERAL OR TO THE IMPLEMENTATION OF ANY SPECIFIC TRADING PROGRAM WHICH CANNOT BE FULLY ACCOUNTED FOR IN THE PREPARATION OF HYPOTHETICAL PERFORMANCE RESULTS, ALL OF WHICH CAN ADVERSELY AFFECT ACTUAL TRADING RESULTS.

THE RISK OF LOSS IN TRADING FUTURES, OPTIONS, COMMODITIES, AND STOCKS CAN BE SUBSTANTIAL. YOU SHOULD THEREFORE CAREFULLY CONSIDER WHETHER SUCH TRADING IS SUITABLE FOR YOU IN LIGHT OF YOUR FINANCIAL CONDITION. IN CONSIDERING WHETHER TO TRADE OR TO AUTHORIZE SOMEONE ELSE TO TRADE FOR YOU, YOU SHOULD BE AWARE OF THE FOLLOWING: IF YOU PURCHASE OR SELL A FUTURE, OPTION, YOU MAY SUSTAIN A TOTAL LOSS OF THE INITIAL MARGIN FUNDS AND ANY ADDITIONAL FUNDS THAT YOU DEPOSIT WITH YOUR BROKER TO ESTABLISH OR MAINTAIN YOUR POSITION. IF THE MARKET MOVES AGAINST YOUR POSITION, YOU MAYBE CALLED UPON YOUR BROKER TO DEPOSIT A SUBSTANTIAL AMOUNT OF ADDITIONAL MARGIN FUNDS, ON SHORT NOTICE. IF YOU DO NOT PROVIDE THE REQUIRED FUNDS WITHIN THE PRESCRIBED TIME, YOUR POSITION MAY BE LIQUIDATED AT A LOSS, AND YOU WILL BE LIABLE FOR ANY RESULTING DEFICIT IN YOU ACCOUNT. THE PLACEMENT OF CONTINGENT ORDERS BY YOU OR YOUR TRADING ADVISOR, SUCH AS A "STOP LOSS" OR "STOP LIMIT" ORDER, WILL NOT NECESSARILY LIMIT YOUR LOSSES TO THE INTENDED AMOUNTS, SINCE MARKET CONDITIONS MAY MAKE IT IMPOSSIBLE TO EXECUTE SUCH ORDERS.

THE HIGH DEGREE OF LEVERAGE THAT IS OFTEN OBTAINABLE IN FUTURES AND OPTIONS MARKETS CAN WORK AGAINST YOU, AS WELL AS FOR YOU. THE USE OF LEVERAGE CAN LEAD TO LARGE LOSSES AS WELL AS GAINS. THIS BRIEF STATEMENT CANNOT DISCLOSE ALL THE RISK AND OTHER SIGNIFICANT ASPECTS OF THE FINANCIAL MARKETS.

LEGAL DISCLAIMER

Bullalgo Trading Systems, Inc. software and documentation are provided without warranty of any kind. Bullalgo Trading Systems, Inc. does not warranty, guarantee or make any representations regarding the use, or the results of the use of the strategy or written documentation in terms of correctness, accuracy, reliability, currentness or otherwise. The entire risk as to the results and performance of the strategy is assumed by the Licensee/user.

In no event shall Bullalgo Trading Systems, Inc. be liable in any respect for any claims, loss, indirect, special or consequential damages or lost profits, resulting from use of or reliance on Bullalgo Trading Systems, Inc. software or documentation.

Bullalgo Trading Systems, Inc. software & documentation is presented solely for training or informational purposes. No offer or solicitation to buy or sell securities or securities derivative products of any kind, or any type of investment or trading advice or strategy, is made, given or in any manner endorsed by Bullalgo Trading Systems, Inc. or its affiliates.

Bullalgo Trading Systems, Inc. software has not been developed based on knowledge of or with reference to your particular circumstances such as financial position, goals, risk-reward preferences, tax situation, brokerage arrangement, investment or trading experience, and so forth. Hence no content or model published by Bullalgo Trading Systems, Inc. constitutes a recommendation that any particular security, portfolio of securities, transaction, or investment strategy is suitable for any specific person.

You are fully responsible for any investment or trading decisions you make, and such decisions should be based solely on your evaluation of your financial circumstances, investment or trading objectives, risk tolerance and liquidity needs. For advice that is specifically addressed to your needs, you should personally consult an appropriate professional (e.g. registered investment advisor, attorney, financial planner, tax professional, etc.) regarding your specific situation.

Trade executions and system response and performance may be adversely affected, including delays and failures, as a result of: market volatility; high share volume; other market fluctuations; illiquidity; other market conditions and risks; quote delays; system and software errors; Internet system problems relating to Internet traffic volume and capacity or other causes; and other factors. One or more of these factors may occur before or after you place a trade, resulting in delayed or failed order placement, order cancellation, trade execution and/or acknowledgement of any of those actions. Solely you assume those risks.

BULLALGO TRADING SYSTEMS, INC. SHALL NOT BE LIABLE TO THE USER OR TO ANY OTHER ENTITY OR INDIVIDUAL FOR ANY LOSS OF PROFITS, REVENUES, TRADES, DATA OR FOR ANY INDIRECT, SPECIAL, PUNITIVE, CONSEQUENTIAL OR INCIDENTAL LOSS OR DAMAGE OF ANY NATURE ARISING FROM ANY CAUSE WHATSOEVER. UNLESS DUE TO WILLFUL TORTIOUS MISCONDUCT OR GROSS NEGLIGENCE, BULLALGO TRADING SYSTEMS, INC. (AND AFFILIATES) SHALL HAVE NO LIABILITY IN TORT, CONTRACT OR OTHERWISE TO THE USER AND/ OR ANY THIRD PARTY.