

# Burger King Corporation



## Accessibility Design Guide

NOVEMBER, 2010 (update February 2014)



*This manual is for the use of Burger King Corporation employees, franchisees and their assigns. It is to be used as reference and as an aid to removing barriers to accessibility that may exist for our customers. It does not give legal opinions and is not to be relied upon for such. Burger King Corporation does not guarantee the accuracy or completeness of the document, and is not responsible for errors or omissions. Each franchisee is cautioned that accessibility codes can vary from state to state and town to town, and to seek professional advice for their specific situation to ensure compliance with the ADA and with all state and local codes.*

# 1. Contents

	<b>Page</b>
Cover	
1. Contents	2
2. Introduction	3
3. Abbreviations	5
4. Definitions	6
I. Picture Menus	9
II. Accessible Parking	10
III. Accessible Routes	14
IV. Curb Ramps	17
V. Ramps	20
VI. Doors	23
VII. Queuing Aisles	26
VIII. Front Service Counter	28
IX. Self Service Condiments and Drinks Counter	29
X. Accessible Interior Route, Tables & Seating	30
XI. Play Areas	33
XII. Restrooms	35
<b>Appendix A</b>	
Burger King 2010 Standards ADA Checklist Version 1.1	43

*This manual is for the use of Burger King Corporation employees, franchisees and their assigns. It is to be used as reference and as an aid to removing barriers to accessibility that may exist for our customers. It does not give legal opinions and is not to be relied upon for such. Burger King Corporation does not guarantee the accuracy or completeness of the document, and is not responsible for errors or omissions. Each franchisee is cautioned that accessibility codes can vary from state to state and town to town, and to seek professional advice for their specific situation to ensure compliance with the ADA and with all state and local codes.*

## 2. Introduction

### Background:

The Americans with Disabilities Act of 1990 is broad sweeping civil rights legislation passed by the US Congress and signed into law in 1990 by President George Bush. It guarantees certain rights to people with disabilities, including the ability to gain access to goods and services provided at places of public accommodation. The ADA applies to all Burger King restaurants, whether they are old (See 4. Definitions: "Readily Achievable") or new, and includes requirements for all of the elements identified in the Burger King 2010 Standards ADA Checklist Version 1.1.

The ADA covers more than just the bricks and mortar of our facilities. Policies, practices, procedures, and public accommodations are required to be reasonably modified so as to provide equal services in a non-discriminatory manner to people with disabilities. One example of which would be the modification of policies prohibiting animals from restaurants; service animals may accompany disabled persons into restaurants. Public accommodations are also required to provide auxiliary aids and services, whenever necessary, to enable effective communication. Examples of such aids for people who are unable to hear can be the use of written communications or picture menus.

People with disabilities currently represent approximately 20% of the population, with that number increasing as our society ages. Many groups select a dining location based on the ability to easily accommodate a disabled family member or friend. When we consider those (such as mothers with strollers, people pulling rolling bags etc) who appreciate the wider doors, maneuvering space and ramped level change transitions, it is clear that providing clear, safe and convenient access is good for all Burger King customers and can result in higher sales and greater customer satisfaction.

### Responsibilities:

As a Burger King Franchisee, you are responsible for ensuring that your facility complies with the requirements of the ADA. This manual is intended to give a brief overview; however, Franchisees are advised to hire competent legal counsel to help determine the Franchisee's legal liability. Interpretation of the ADA is in a state of evolution as precedence setting compliance challenges are settled in and out of court. Burger King Corporation understands its responsibility as a corporate citizen and has made a serious commitment to making BK restaurants accessible to all customers. It should also be noted that the Burger King Franchisee is required to obtain a new set of Burger King prototype plans for every site that is to be developed.

***It is each individual Franchisee's responsibility to hire competent professionals to ensure compliance with all state and local building codes and regulations. This also applies to ADA criteria. It should be noted that the more restrictive code will always prevail, whether it be Local, State, or Federal.***

### Use of the Manual:

This manual is intended to assist Burger King Franchisees in understanding the responsibilities involved in providing accessibility for people with disabilities in Burger King restaurants; a requirement of the Americans with Disabilities Act of 1990 (ADA). The manual is also intended to

*This manual is for the use of Burger King Corporation employees, franchisees and their assigns. It is to be used as reference and as an aid to removing barriers to accessibility that may exist for our customers. It does not give legal opinions and is not to be relied upon for such. Burger King Corporation does not guarantee the accuracy or completeness of the document, and is not responsible for errors or omissions. Each franchisee is cautioned that accessibility codes can vary from state to state and town to town, and to seek professional advice for their specific situation to ensure compliance with the ADA and with all state and local codes.*

assist Franchisees and their architects by providing the ADA checklist based on the latest ADA criteria for elements and spaces typically found in Burger King restaurants. The Burger King 2010 Standards ADA Checklist Version 1.1 can and should be used during the design process to insure that all required elements are included in the design drawings. The Checklist should also be used during the punch list phase of the construction project to insure that all elements have been correctly constructed and installed.

This manual is organized in sections that roughly follow the order of the 2010 ADA Checklist. Understanding the ADA requirements will assist in the development of cost effective solutions that benefit all Burger King customers. Definitions and Abbreviations sections are provided at the beginning of this manual as a quick reference and index. The Burger King 2010 Standards ADA Checklist Version 1.1 is attached as an appendix.

### 3. Abbreviations

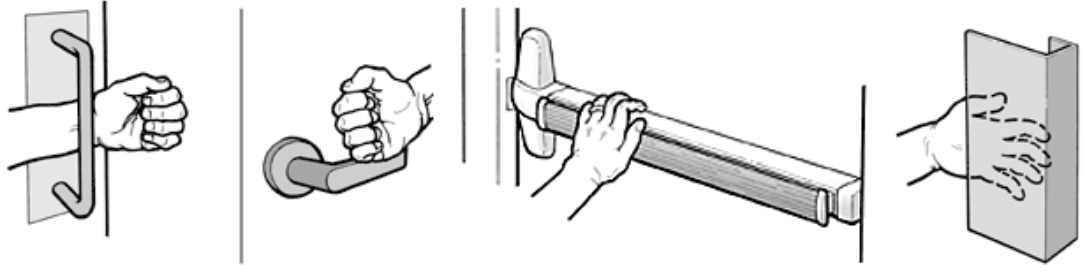
ADA	Americans with Disabilities Act
ADAAG	Americans with Disabilities Act Accessibility Guidelines
AFF	Above Finish Floor
CL	Centerline
dia	Diameter
Dim	Dimension
ISA	International Symbol of Accessibility
Lav.	Lavatory (sink)
Max.	Maximum
Min.	Minimum
O.C.	On Center (a dimension from the center of one object to the center of another)
Req or Reqmts	Required or Requirements
Slope %	Rise : Run
Typ.	Typical
WC	Water Closet (toilet)

*This manual is for the use of Burger King Corporation employees, franchisees and their assigns. It is to be used as reference and as an aid to removing barriers to accessibility that may exist for our customers. It does not give legal opinions and is not to be relied upon for such. Burger King Corporation does not guarantee the accuracy or completeness of the document, and is not responsible for errors or omissions. Each franchisee is cautioned that accessibility codes can vary from state to state and town to town, and to seek professional advice for their specific situation to ensure compliance with the ADA and with all state and local codes.*

## 4. Definitions

### “Closed Fist or Flail Hand”

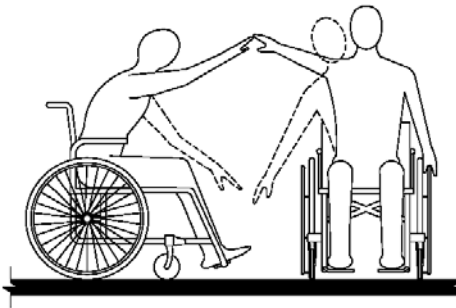
Many people have limited use of their hands or limited strength that keeps them from operating items, such as door handles, faucet handles or drinks dispensers. These items must be brought into compliance so that they can be operated with a closed fist or with a flail hand.



**Closed Fist Rule:** A good way to determine how useable a piece of equipment or hardware is for a broad range of people with varying hand strength, is to try to operate the unit with a loosely clenched fist or a flail hand. If someone can operate it with a closed fist, it will likely be useable by almost anyone.

### “Reach Range”

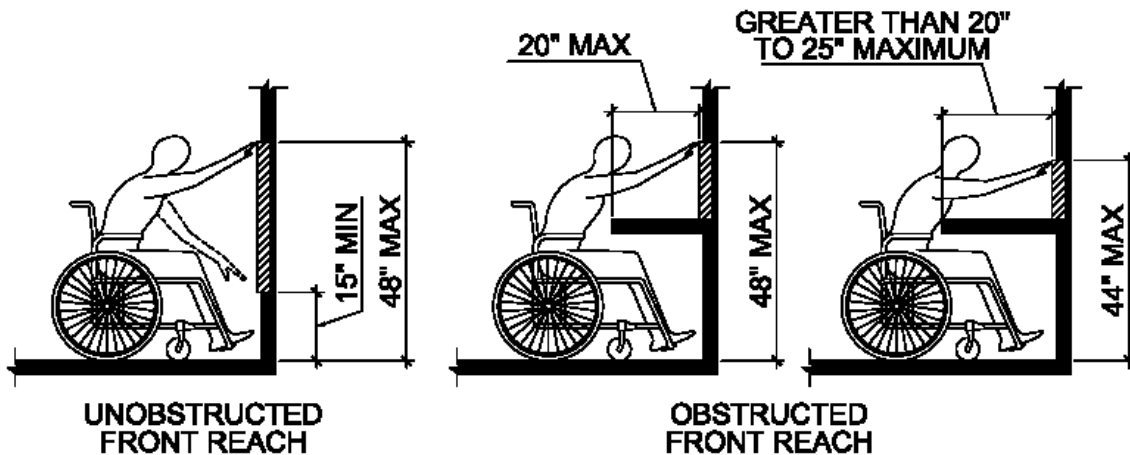
Accessible items and controls are required to be located within the wheelchair user’s reach range, and within the range of someone with limited arm movement. This range is different depending on the direction of the approach to the object (front or side), and if it is necessary to reach over another object. In Burger King restaurants, this most often affects our self-serve drinks counter, restrooms, and front counter.



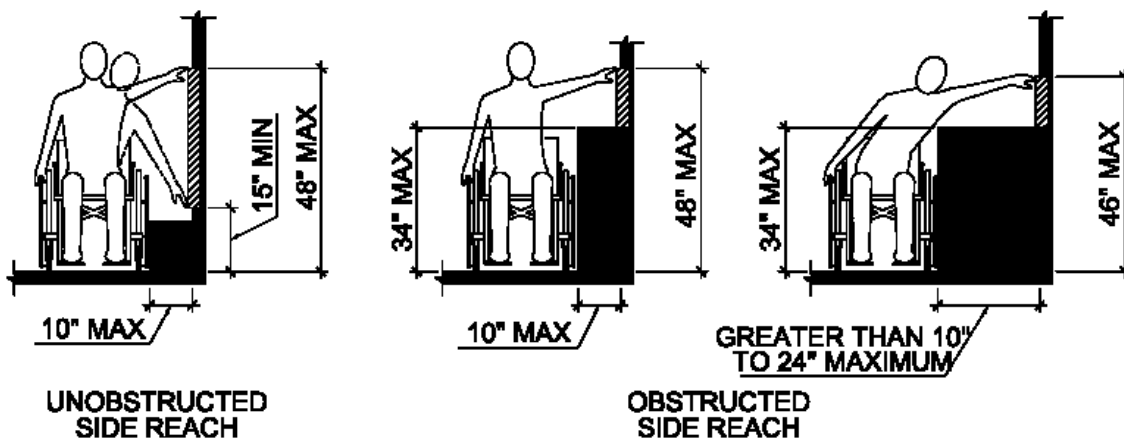
**FRONT REACH      SIDE REACH**

Front reaches must be no higher than 48 inches and no lower than 15 inches when unobstructed by an object. The front reach must be no higher than 48 inches when obstructed by an object whose depth is a maximum of 20 inches, or no higher than 44 inches when obstructed by an object whose depth is more than 20 inches but not more than 25 inches.

*This manual is for the use of Burger King Corporation employees, franchisees and their assigns. It is to be used as reference and as an aid to removing barriers to accessibility that may exist for our customers. It does not give legal opinions and is not to be relied upon for such. Burger King Corporation does not guarantee the accuracy or completeness of the document, and is not responsible for errors or omissions. Each franchisee is cautioned that accessibility codes can vary from state to state and town to town, and to seek professional advice for their specific situation to ensure compliance with the ADA and with all state and local codes.*



Side reaches must be no higher than 48 inches and no lower than 15 inches when unobstructed by an object. The side reach must be no higher than 48 inches when obstructed by an object whose depth is a maximum of 10 inches, or no higher than 46 inches when obstructed by an object whose height is no more than 34 inches and whose depth is more than 10 inches but not more than 24 inches.



## “Readily Achievable”

The ADA requires<sup>1</sup> companies that provide goods and services to the public to take certain limited steps to improve access to existing places of business. This mandate includes the obligation to remove barriers from existing buildings when it is *readily achievable* to do so. The term “*Readily Achievable*” means *easily accomplishable, and able to be carried out without much difficulty or expense*.

Many building features that are common in older facilities such as narrow doors, a step, a round door knob at entrance doors, or a narrow queue aisle are barriers to access by people with disabilities. Removing barriers by ramping a curb, widening an entrance door, installing visual alarms, or designating accessible parking spaces is often essential to ensure equal opportunity for people with disabilities. Because removing these and other common barriers can be simple and inexpensive in some cases and difficult and costly in others, the regulations for the ADA provide a flexible approach to

<sup>1</sup> US Department of Justice’s August 1996 Title III Technical Assistance Manual update

*This manual is for the use of Burger King Corporation employees, franchisees and their assigns. It is to be used as reference and as an aid to removing barriers to accessibility that may exist for our customers. It does not give legal opinions and is not to be relied upon for such. Burger King Corporation does not guarantee the accuracy or completeness of the document, and is not responsible for errors or omissions. Each franchisee is cautioned that accessibility codes can vary from state to state and town to town, and to seek professional advice for their specific situation to ensure compliance with the ADA and with all state and local codes.*

compliance. This practical approach requires that barriers be removed in existing facilities only when it is readily achievable to do so. The ADA requires existing buildings to meet the ADA's standards for newly constructed facilities if it is "readily achievable" to do so.

The ADA states that individuals with disabilities may not be denied the full and equal enjoyment of the goods, services, facilities, privileges, advantages, or accommodations that the business provides.



# I. Picture Menus



The ADA requires “Effective Communication” for all people. Accommodation must be made for customers with low vision or with difficulty speaking or hearing.

Burger King Corporation requires that picture menus be available at the order counter and at the drivethru window. Signage must be posted at the drivethru orderstation informing customers that these menus are available at the window, and on the interior menu board informing customers that these menus are available at the front counter.

Customers with speech difficulties or language differences can point to what they would like to order rather than trying to order verbally. Crew members must be able to offer personal assistance for those who are unable to communicate due to a visual, speech, or hearing impairment.



Photograph 1.01 – PICTURE MENU INFORMATION

Refer to Section 1.00 of the Burger King 2010 Standards ADA Checklist Version 1.1

*This manual is for the use of Burger King Corporation employees, franchisees and their assigns. It is to be used as reference and as an aid to removing barriers to accessibility that may exist for our customers. It does not give legal opinions and is not to be relied upon for such. Burger King Corporation does not guarantee the accuracy or completeness of the document, and is not responsible for errors or omissions. Each franchisee is cautioned that accessibility codes can vary from state to state and town to town, and to seek professional advice for their specific situation to ensure compliance with the ADA and with all state and local codes.*

## II. Accessible Parking

The ADA requires that accessible parking spaces be located on the shortest accessible route to the accessible entrance of the building. At least one van accessible space must be provided (see Table below). All the accessible parking spaces must be close to being level, with a maximum of 2% slope in any direction. Careful site evaluation will be needed to fully understand the impact of the site constraints on the route to the building. Re-striping and re-grading of existing lots will often be necessary. Any grading or re-grading of the lot at these spaces should be done to allow no slopes greater than 2%. (Also see Section III - Accessible Routes.)

Customers with mobility impairments need to have extra wide, level space beside their parked cars or vans to allow them to safely maneuver mobility devices such as walkers, wheelchairs and scooters in and out of their vehicles. Without these spaces, many customers would not enter the restaurant, as the space needed to exit their vehicles is often much greater than that offered by normal sized parking spaces.

Total Number of Parking Spaces Provided	Minimum Number of Accessible Spaces Required	Minimum Number of Van Accessible Spaces Required
1 to 25	1	1
26 to 50	2	1
51 to 75	3	1
76 to 100	4	1
101 to 150	5	1
151 to 200	6	1
201 to 300	7	2
Additional spaces required for higher parking count. Refer to ADA documentation.		

Table 2.01 – REQUIRED PARKING SPACES

***Each Franchisee should have their local consultant check with the governing codes of their area for Parking Space Requirements that may differ from the ADA standards. The more restrictive criteria should be used.***

A typical accessible parking layout for parking lots with less than 51 parking spaces is shown below. A common strategy is to locate a shared access aisle on the passenger side of a van accessible stall because wheelchair lifts are typically located on the passenger side of the van. The ADA accessible van parking space is 11'-0" wide with a 5'-0" wide access aisle. An 8'-0" wide access aisle with an 8'-0" wide van parking space is also acceptable, but is less desirable as access aisles this wide can be mistaken for parking spaces. Some states will require van or car spaces to be wider. Franchisees should have their local professional design consultant design their site plan per the more restrictive of the codes.

*This manual is for the use of Burger King Corporation employees, franchisees and their assigns. It is to be used as reference and as an aid to removing barriers to accessibility that may exist for our customers. It does not give legal opinions and is not to be relied upon for such. Burger King Corporation does not guarantee the accuracy or completeness of the document, and is not responsible for errors or omissions. Each franchisee is cautioned that accessibility codes can vary from state to state and town to town, and to seek professional advice for their specific situation to ensure compliance with the ADA and with all state and local codes.*

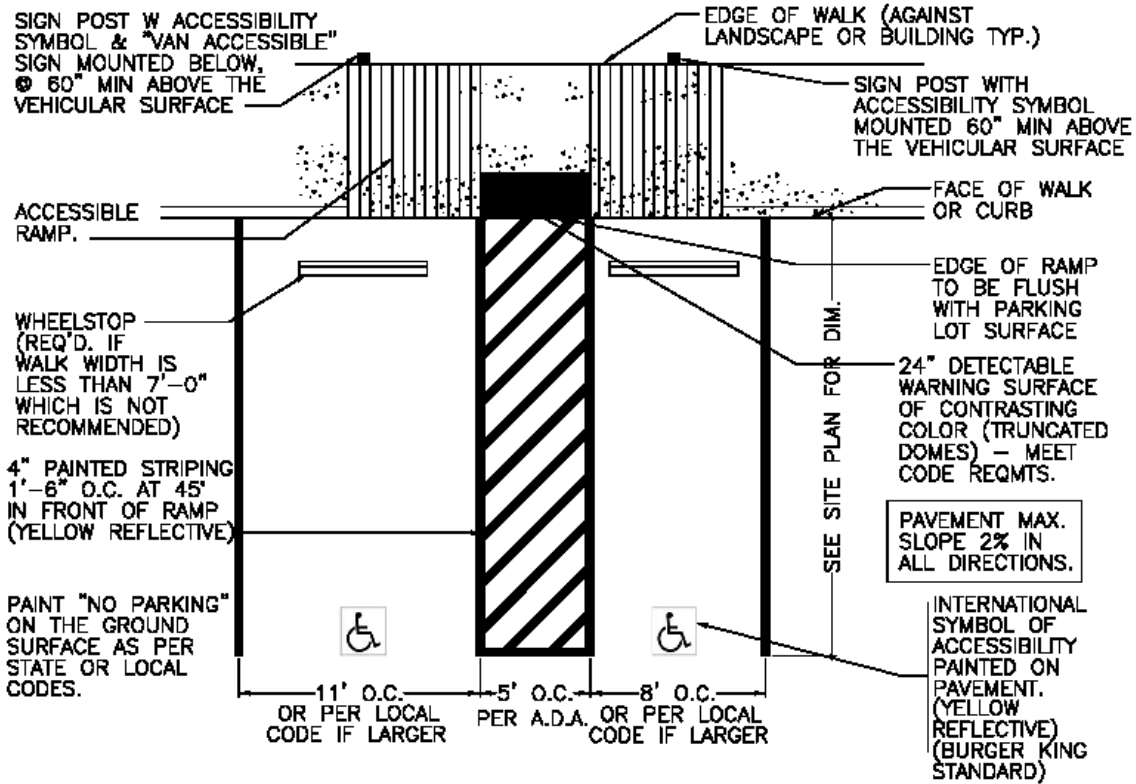


Diagram 2.01 – ACCESSIBLE PARKING STALL REQUIREMENTS

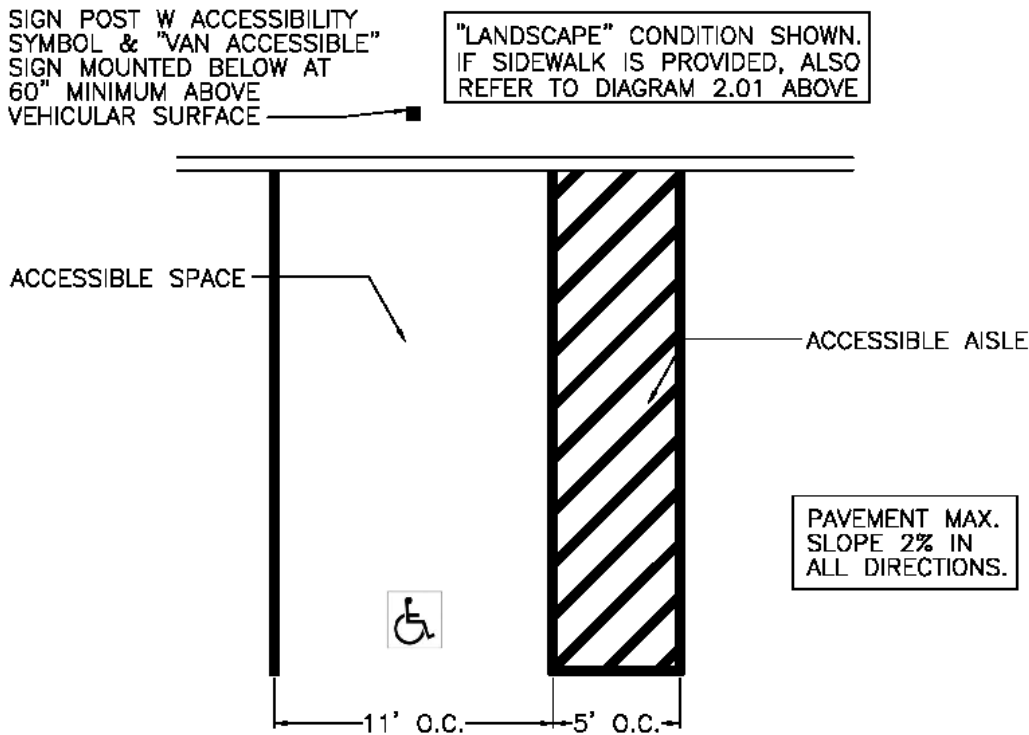


Diagram 2.02 – PREFERRED INDIVIDUAL ACCESSIBLE PARKING STALL

*This manual is for the use of Burger King Corporation employees, franchisees and their assigns. It is to be used as reference and as an aid to removing barriers to accessibility that may exist for our customers. It does not give legal opinions and is not to be relied upon for such. Burger King Corporation does not guarantee the accuracy or completeness of the document, and is not responsible for errors or omissions. Each franchisee is cautioned that accessibility codes can vary from state to state and town to town, and to seek professional advice for their specific situation to ensure compliance with the ADA and with all state and local codes.*

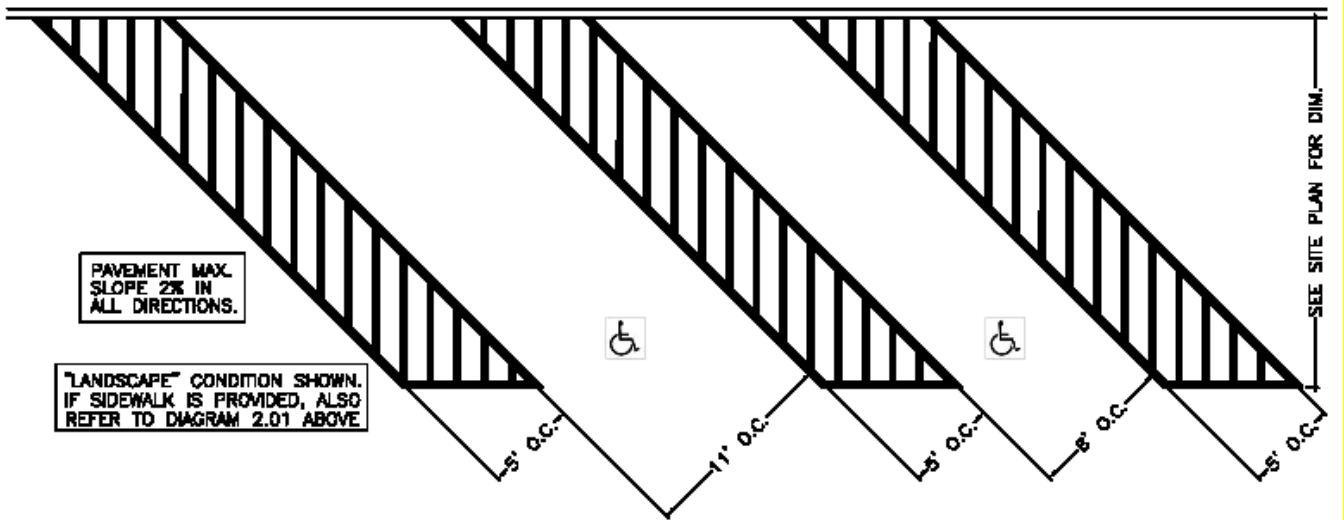


Diagram 2.03 – ACCESSIBLE ANGLED PARKING STALLS

Note: All accessible angled parking stalls should have aisles on the passenger side of the vehicle. Angled van parking must have the aisle on the passenger side of the vehicle.



Diagram 2.04 – ACCESSIBLE PARKING SIGN

Note: Van parking space signs must contain the designation, “Van Accessible” and are to be 60 inches minimum height above the accessible parking stall surface.

*This manual is for the use of Burger King Corporation employees, franchisees and their assigns. It is to be used as reference and as an aid to removing barriers to accessibility that may exist for our customers. It does not give legal opinions and is not to be relied upon for such. Burger King Corporation does not guarantee the accuracy or completeness of the document, and is not responsible for errors or omissions. Each franchisee is cautioned that accessibility codes can vary from state to state and town to town, and to seek professional advice for their specific situation to ensure compliance with the ADA and with all state and local codes.*



Photograph 2.05 – ACCESSIBLE PARKING

Refer to Section 2.00 of the Burger King 2010 Standards ADA Checklist Version 1.1

*This manual is for the use of Burger King Corporation employees, franchisees and their assigns. It is to be used as reference and as an aid to removing barriers to accessibility that may exist for our customers. It does not give legal opinions and is not to be relied upon for such. Burger King Corporation does not guarantee the accuracy or completeness of the document, and is not responsible for errors or omissions. Each franchisee is cautioned that accessibility codes can vary from state to state and town to town, and to seek professional advice for their specific situation to ensure compliance with the ADA and with all state and local codes.*

### III. Accessible Routes

The ADA requires barrier-free access to and through the public areas of our restaurants for all our customers. The routes are required to connect the public right of way and the accessible parking with an accessible building entry. They also are required to connect that entry with all of the accessible elements inside and outside of the Burger King restaurant. For any restaurants that will complete construction after March 15, 2012, 60% of the entrances for public use will be required to be accessible - connected to all interior accessible areas, the public right of way, accessible parking, and any transportation stops near the site. Therefore, if the restaurant has two customer access doors, they both must be accessible. Burger King Corporation recommends that any new construction meet this requirement now. In remodeling situations, this requirement is exempted, as long as the restaurant meets either the 1991 or 2010 standards – depending on when the construction was completed.

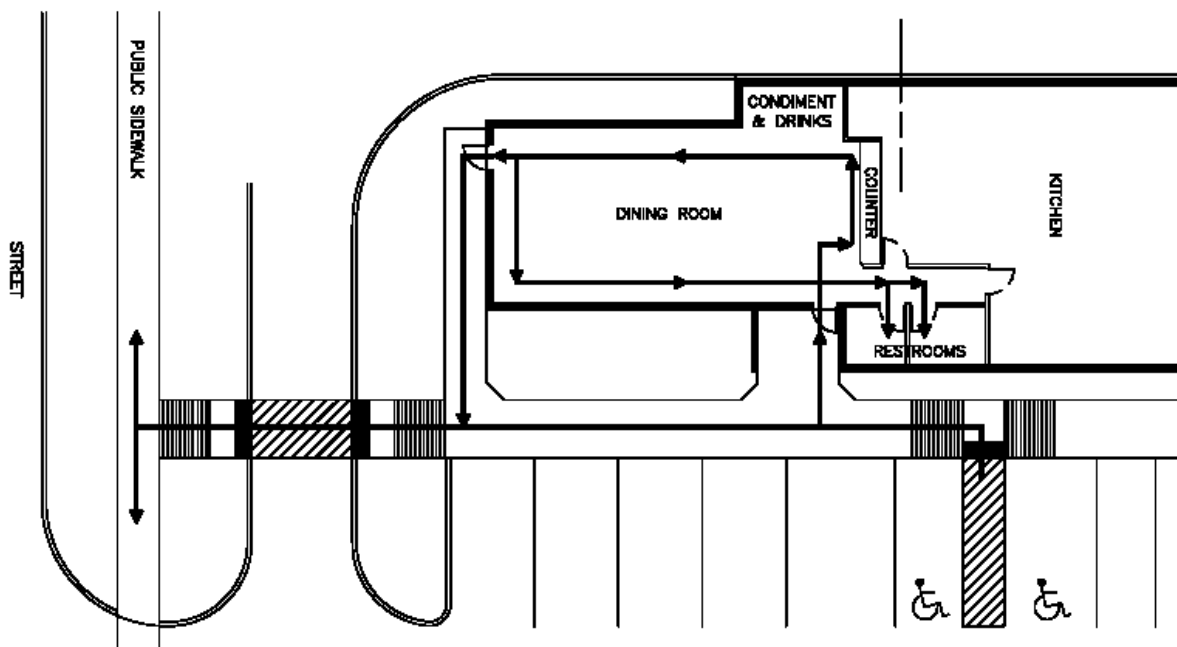


Diagram 3.01 – OVERALL ACCESSIBILITY DIAGRAM

An accessible route must be provided that connects all serving, dining, playground and restroom areas of the restaurant, and must link the building entrance with the required accessible parking spaces, accessible passenger loading zones and public right of ways. Accessible routes must be provided to outside dining areas as well. Diagram 3.01 illustrates a common path of an accessible route, and Diagram 3.02 illustrates the clearance for the accessible route.

*This manual is for the use of Burger King Corporation employees, franchisees and their assigns. It is to be used as reference and as an aid to removing barriers to accessibility that may exist for our customers. It does not give legal opinions and is not to be relied upon for such. Burger King Corporation does not guarantee the accuracy or completeness of the document, and is not responsible for errors or omissions. Each franchisee is cautioned that accessibility codes can vary from state to state and town to town, and to seek professional advice for their specific situation to ensure compliance with the ADA and with all state and local codes.*

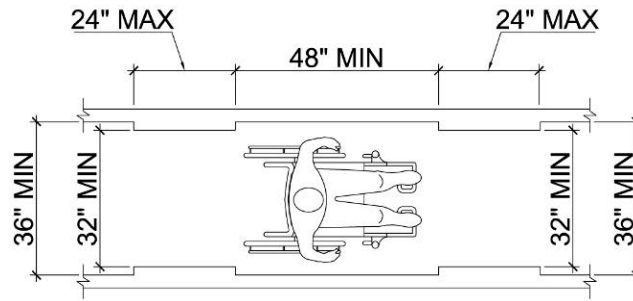


Diagram 3.02 – ACCESSIBLE ROUTE CLEARANCE

Exterior accessible routes should contain clearly designated crosswalks with painted stripes or should be made of a different and contrasting material from the surrounding area, and be free of abrupt changes in height of more than 1/4 inch or wider than 1/2 inch. A raised crack in the sidewalk or the grating of a storm drain's catch basin may be enough to present a violation of the code. The running slope of the route should be 5% or less. If the slope is more than 5%, a ramp will need to be provided (refer to Section IV). The allowable cross slope is 2% or less.

Be sure that the accessible route has the proper clear width (Refer to Diagram 3.02) and vertical space. All circulation routes must maintain 80 inches of clear height, and be sure that nothing protrudes into the route more than 4 inches between the height of 27 inches and 80 inches. Refer to diagram 3.03.

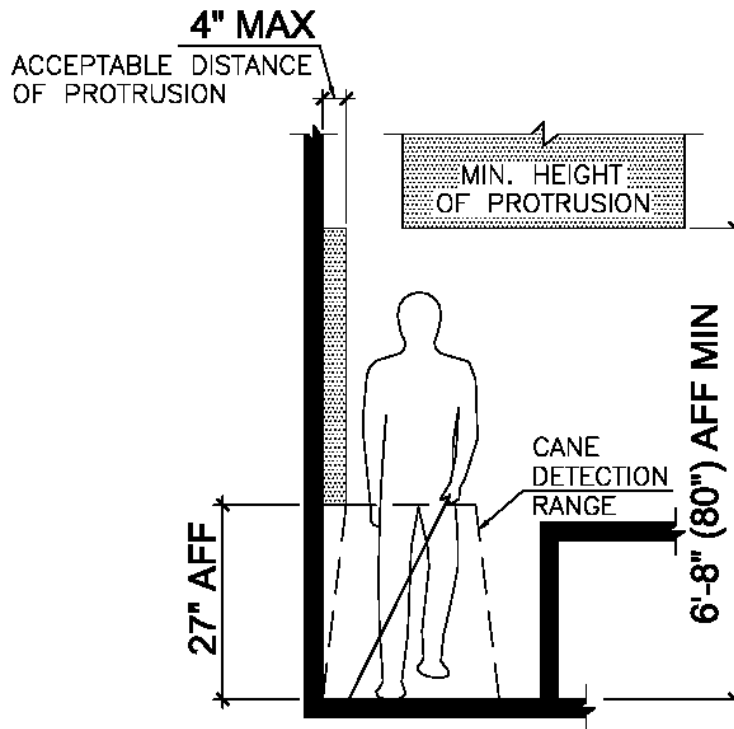


Diagram 3.03 – PROTRUDING OBJECTS AND HEAD CLEARANCE

When remodeling Burger King restaurant sites, if an accessible route is not already provided from the public right-of-way to the accessible entrance, then a new accessible route must be provided. Also,

*This manual is for the use of Burger King Corporation employees, franchisees and their assigns. It is to be used as reference and as an aid to removing barriers to accessibility that may exist for our customers. It does not give legal opinions and is not to be relied upon for such. Burger King Corporation does not guarantee the accuracy or completeness of the document, and is not responsible for errors or omissions. Each franchisee is cautioned that accessibility codes can vary from state to state and town to town, and to seek professional advice for their specific situation to ensure compliance with the ADA and with all state and local codes.*



often the existing path is too narrow because of vehicles overhanging the sidewalk along the route. Wheelstops may need to be added to keep the sidewalk clear. Sometimes the route must be re-graded or relocated in order to be in compliance with the slope requirements, or sidewalks may need to be repaired or replaced.

Inside the restaurant, the accessible route is required to extend from the entry doors, through the queue line, to the front counter, the self-serve drinks station, to every accessible table, the playground (if provided), and to the restrooms. If exterior seating is provided, it too must be reachable by an accessible route. Be sure that trash units, promotional materials, newspaper racks, etc do not obstruct the paths.



Photograph 3.04 – ACCESSIBLE PATH OF TRAVEL FROM RIGHT-OF-WAY

Refer to Sections IV, V, VI, VII, and X of this Manual

Refer to Sections 3.00, 4.00, 5.00, 10.00 and 11.00 of the Burger King 2010 Standards ADA Checklist Version 1.1

*This manual is for the use of Burger King Corporation employees, franchisees and their assigns. It is to be used as reference and as an aid to removing barriers to accessibility that may exist for our customers. It does not give legal opinions and is not to be relied upon for such. Burger King Corporation does not guarantee the accuracy or completeness of the document, and is not responsible for errors or omissions. Each franchisee is cautioned that accessibility codes can vary from state to state and town to town, and to seek professional advice for their specific situation to ensure compliance with the ADA and with all state and local codes.*



## IV. Curb Ramps

Curb ramps are short ramps that either cut through a curb or build up to it. They are used when a transition is needed between the sidewalk and the vehicular area. The slope of a curb ramp is regulated to accommodate people with disabilities, and level landing areas are required at the top of the ramp. Parking spaces may not block the bottom of the curb ramp.

Access aisles adjacent to the curb ramp may slope at no more than 2%. Other surfaces adjacent to the curb ramp (gutters, roadways, parking lots) may be sloped up to 5% (1:20) maximum unless a 90 degree turn is required to access the curb ramp. If this is the case, the adjacent surface may slope no more than 2%.

The curb ramp's running slope is always parallel to the route of travel up the curb ramp, with the slope of the flare sides measured parallel to the curb. The maximum allowed slope is 8.3% (1:12) and maximum cross slope is 2%. Although the minimum width for a curb ramp is 36 inches, Burger King Corporation recommends 48 inches or 60 inches where possible. The side flare slope must not be steeper than 10% (1:10) in alterations, or 8.3% (1:12) if no top landing is provided. If there is not enough room for a 36 inches deep landing at the top of the curb ramp, a parallel curb ramp should be used.

Depending on the state and local codes, detectable warnings (truncated domes) of contrasting color to the surrounding pavement are required where a circulation route is flush with the vehicular surface, such as at the bottom of a curb ramp. Note: Detectable warning requirements may vary.

The parking at most Burger King restaurants is below the building's finish floor elevation, and therefore an accessible curb ramp from the parking level to the entrance level is almost always required. It is part of the accessible route (see Section III). Site slope, accessible parking location, and restaurant entrance location determine the curb ramp location.

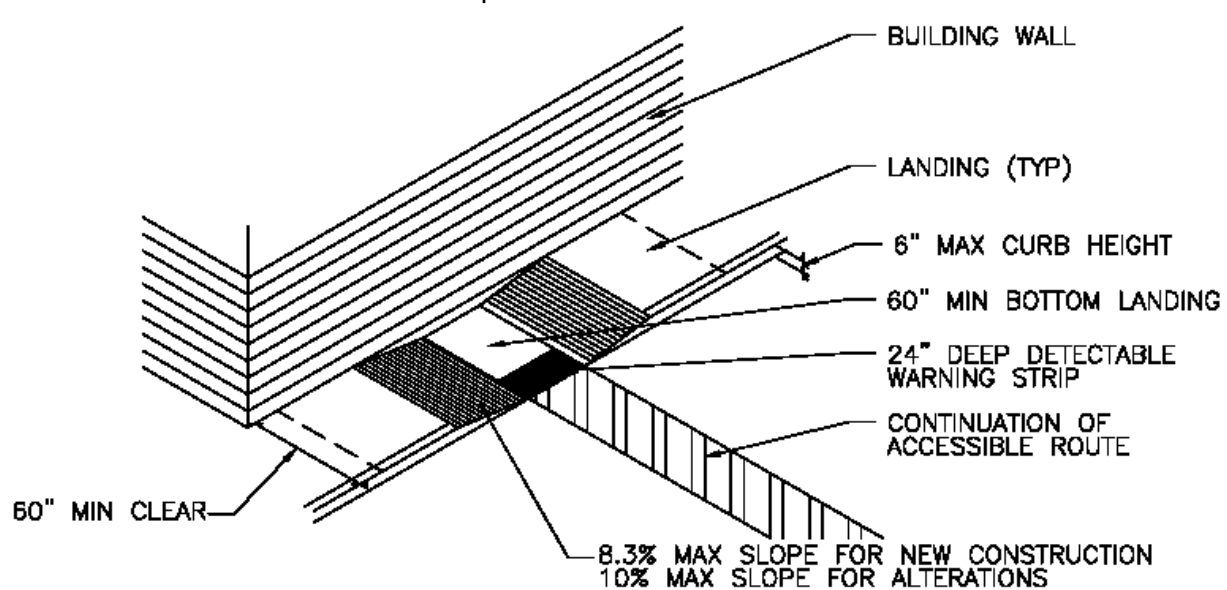


Diagram 4.01 – NON-FLARED (PARALLEL) CURB RAMP

*This manual is for the use of Burger King Corporation employees, franchisees and their assigns. It is to be used as reference and as an aid to removing barriers to accessibility that may exist for our customers. It does not give legal opinions and is not to be relied upon for such. Burger King Corporation does not guarantee the accuracy or completeness of the document, and is not responsible for errors or omissions. Each franchisee is cautioned that accessibility codes can vary from state to state and town to town, and to seek professional advice for their specific situation to ensure compliance with the ADA and with all state and local codes.*

Note: Curb ramp slope must not exceed 8.3% in new construction. Curb ramp slope of 10% or less for a maximum height of 6 inches is acceptable for alterations. Landing depth must be 60 inches min.

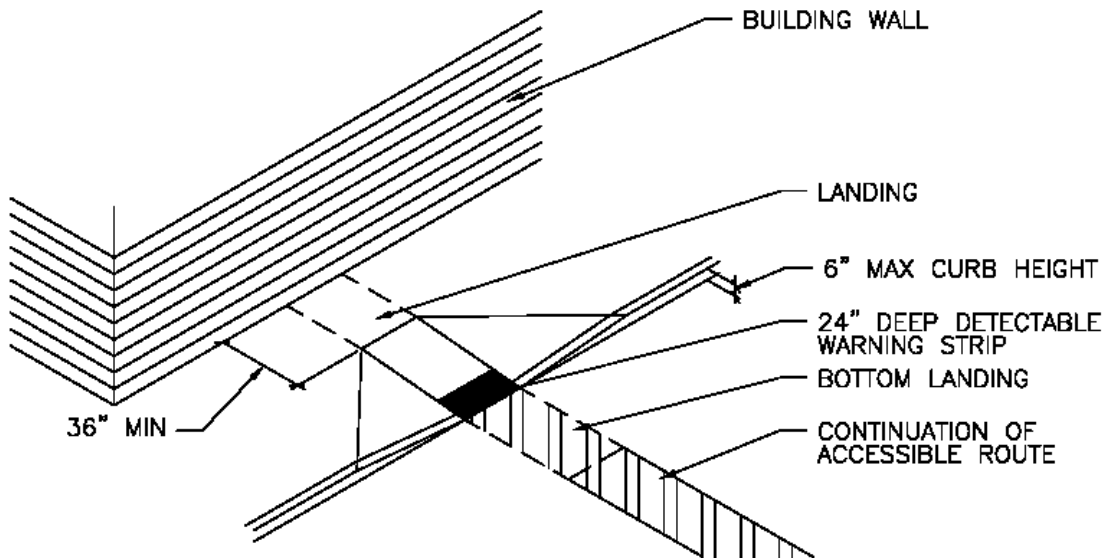
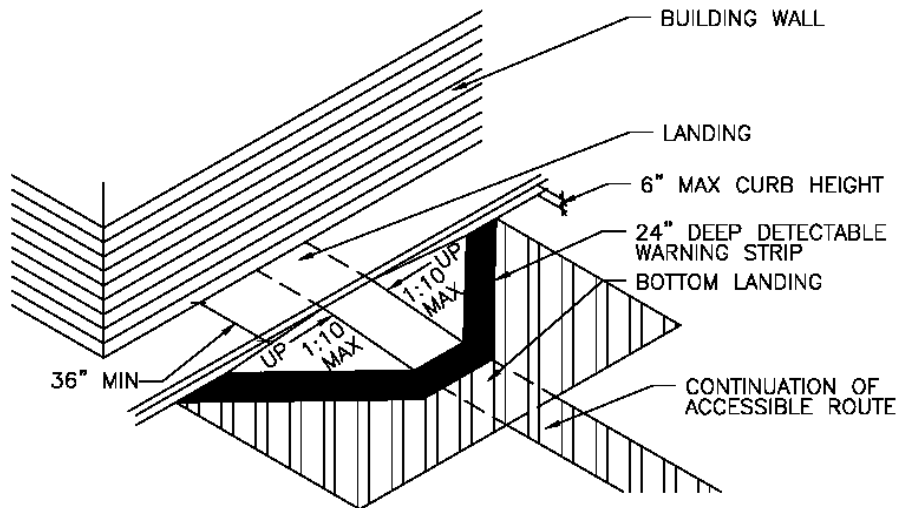


Diagram 4.02 – FLARED CURB RAMP

Note: Curb ramp slope (excluding all flares) must not exceed 8.3% in new construction. Curb ramp slope of 10% or less for a maximum height of 6 inches is acceptable for alterations. The landing depth must be 36 inches min.



**NOTE:**  
 BUILT-UP CURB RAMPS ARE NOT A COMPLIANT SOLUTION WHEN USED IN CONJUNCTION WITH ACCESSIBLE PARKING. BURGER KING CORPORATION DOES NOT RECOMMEND THE USE OF BUILT-UP RAMPS.

Diagram 4.03 – BUILT-UP CURB RAMPS

*This manual is for the use of Burger King Corporation employees, franchisees and their assigns. It is to be used as reference and as an aid to removing barriers to accessibility that may exist for our customers. It does not give legal opinions and is not to be relied upon for such. Burger King Corporation does not guarantee the accuracy or completeness of the document, and is not responsible for errors or omissions. Each franchisee is cautioned that accessibility codes can vary from state to state and town to town, and to seek professional advice for their specific situation to ensure compliance with the ADA and with all state and local codes.*

Note: Bottom landing may not be located in a drive aisle; landing depths must be 36 inches min.

Where accessible paths of travel must cross a parking island, two possible solutions are to cut a path through the island to provide a level route, or to provide curb ramps at each side, continuing the path across the top of the island. The same slopes and criteria as previously mentioned still apply, but the landing at the top of the ramps must be a minimum of 48 inches deep.

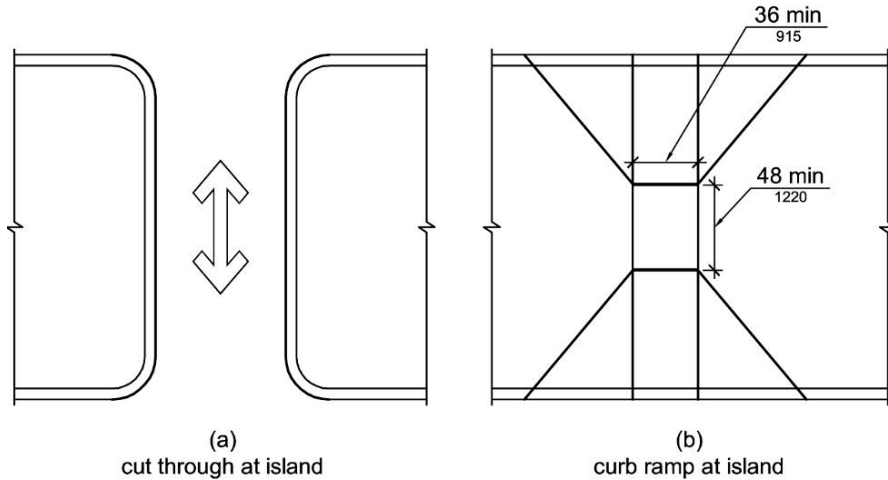


Diagram 4.04 – CURB RAMPS AT ISLANDS

Refer to Section 4.00 of the Burger King 2010 Standards ADA Checklist Version 1.1

## V. Ramps

A ramp is a walking surface where the running slope (direction of travel) is steeper than 1:20 (or 5%) but no steeper than 1:12 (8.3%). Ramps are needed where the elevation change between the restaurant finish floor and the exterior pedestrian sidewalk, parking elevation, or other accessible site elements (sidewalk in the right-of-way for example), is more than the height that can be accommodated by a curb ramp. If the overall height is 6 inches or less, a curb ramp is generally sufficient (See Section IV). When pedestrian walks or accessible site and building elements exceed a slope of 5% between elevations they must follow the 2010 Standards ramp requirements.

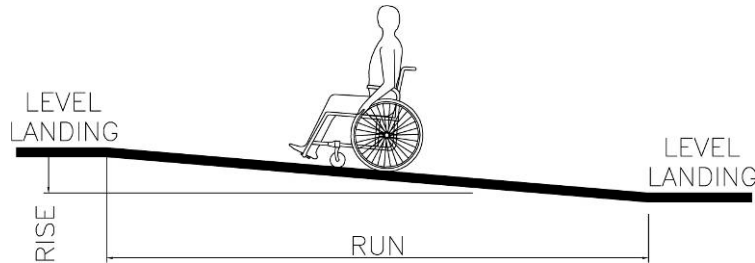


Diagram 5.01 – RISE AND RUN

**Note:** The maximum rise between level landings is 30 inches.

The 2010 Standards require that ramp runs do not exceed a slope of 8.3%. All ramp runs must have a minimum clear width of 36 inches and must not exceed 30 inches of rise in a single run (between landings). Ramps must have top and bottom level landings with a slope not to exceed 2% in any direction. Hand rails and edge protection are also required. Ramps require 60 inches level landings at the top and bottom of every run and have unique requirements where a change in direction or double-back occurs. It is the Franchisee’s responsibility to hire competent professionals to ensure compliance.

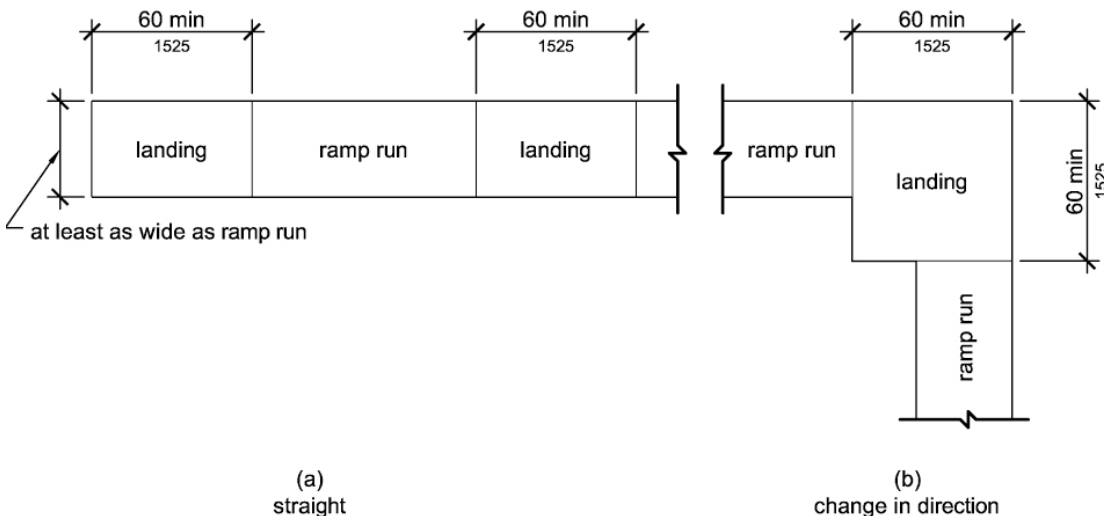


Diagram 5.02 – OVERALL RAMP DESIGN

*This manual is for the use of Burger King Corporation employees, franchisees and their assigns. It is to be used as reference and as an aid to removing barriers to accessibility that may exist for our customers. It does not give legal opinions and is not to be relied upon for such. Burger King Corporation does not guarantee the accuracy or completeness of the document, and is not responsible for errors or omissions. Each franchisee is cautioned that accessibility codes can vary from state to state and town to town, and to seek professional advice for their specific situation to ensure compliance with the ADA and with all state and local codes.*

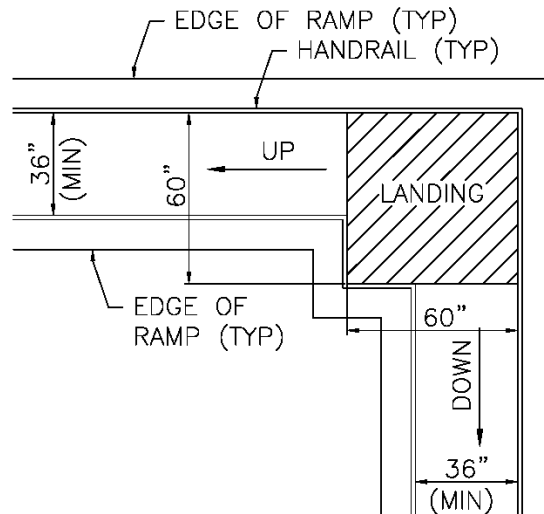


Diagram 5.03 – RAMP LANDINGS

**Note:** Ramps may only change direction at level landings. Where ramp runs change directions before or after a level landing, the landing must have 60 inches x 60 inches min. clear dimensions. Ramps cannot have compound slopes (a slope of greater than 2% in any direction) at level landings.

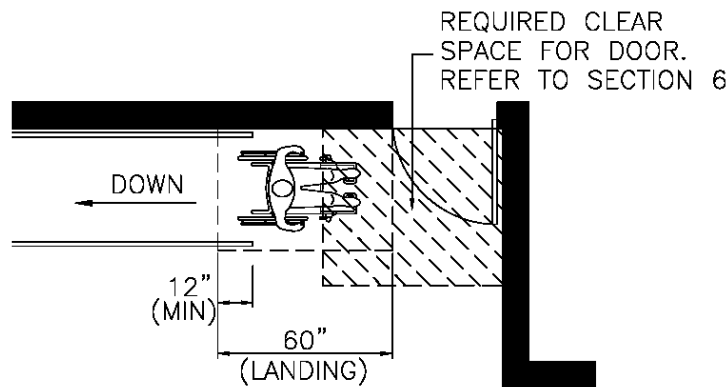


Diagram 5.04 – RAMP LANDINGS AT BUILDING ENTRANCES

**Note:** Where ramps are used to approach the accessible entrance of a building, a level landing is required for operation of the door and maneuvering through the building entrance. As shown in Diagram 5.04, although the landing is allowed to overlap the required clear space for a door (see Section VI), it is recommended that the landing be positioned outside of the swing of the door, especially if the landing is at the bottom of a ramp or if the landing adjoins both the ramp and a set of stairs.

Any ramp with a rise over 6 inches is required to have handrails. The ramp railing height must be 34 inches minimum and 38 inches maximum to the top of the gripping surface along the run and at the 12 inch minimum extensions over the landings. The railings are to be a minimum of 1-1/4 inches to a maximum of 2 inches in diameter.

*This manual is for the use of Burger King Corporation employees, franchisees and their assigns. It is to be used as reference and as an aid to removing barriers to accessibility that may exist for our customers. It does not give legal opinions and is not to be relied upon for such. Burger King Corporation does not guarantee the accuracy or completeness of the document, and is not responsible for errors or omissions. Each franchisee is cautioned that accessibility codes can vary from state to state and town to town, and to seek professional advice for their specific situation to ensure compliance with the ADA and with all state and local codes.*

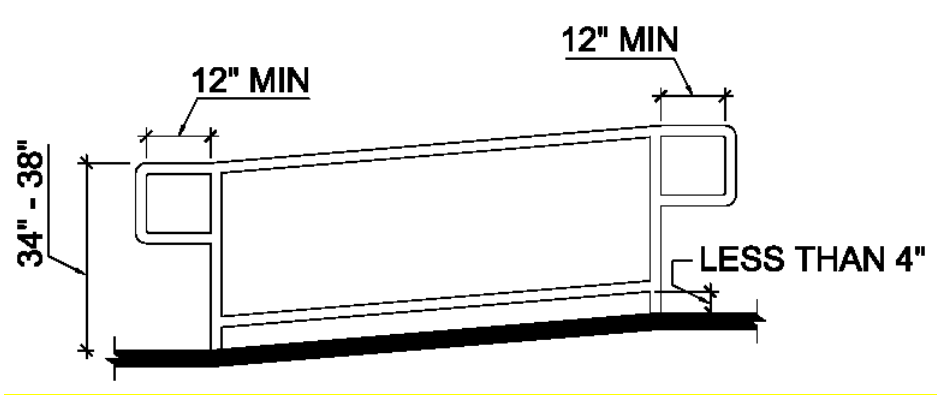


Diagram 5.05 – RAMP RAILINGS



Photograph 5.06 – RAMP

Refer to Section 5.00 of the Burger King 2010 Standards ADA Checklist Version 1.1

*This manual is for the use of Burger King Corporation employees, franchisees and their assigns. It is to be used as reference and as an aid to removing barriers to accessibility that may exist for our customers. It does not give legal opinions and is not to be relied upon for such. Burger King Corporation does not guarantee the accuracy or completeness of the document, and is not responsible for errors or omissions. Each franchisee is cautioned that accessibility codes can vary from state to state and town to town, and to seek professional advice for their specific situation to ensure compliance with the ADA and with all state and local codes.*

## VI. Doors

Doors pose special problems for many people with disabilities. Getting close enough to the door and positioning yourself so that you can overcome the force of the latch, closer and threshold can be difficult for people with poor balance, limited strength, or who must hold on to a mobility device, such as crutches, walkers or wheelchairs. For these reasons, doors are required to be easy to open with at least 32 inches of clear opening width, level landings (maneuvering clearance) on both sides, handles and hardware that are easy to operate (even for people who have no hands), low thresholds, kick plates, and if provided, door closers that control the speed and force required to operate it. The size of the maneuvering clearance space depends on the direction that you approach the door and what kind of hardware is installed on the door, but a simple rule is that a correctly positioned 5' X 5' level landing at a door generally ensures compliance. For more specific information, refer to Diagram 6.02. Often, when people using wheelchairs approach a door their footrests come in contact with the door. Therefore, the lower 10 inches of the push side of all doors must be smooth or have a kick plate to allow the footrests to slide smoothly. In addition, thresholds must have a low transition. If the threshold is more than 1/4 inch in height, the top 1/4 inch must be beveled at 1:2, and it may not exceed 1/2 inch in height.

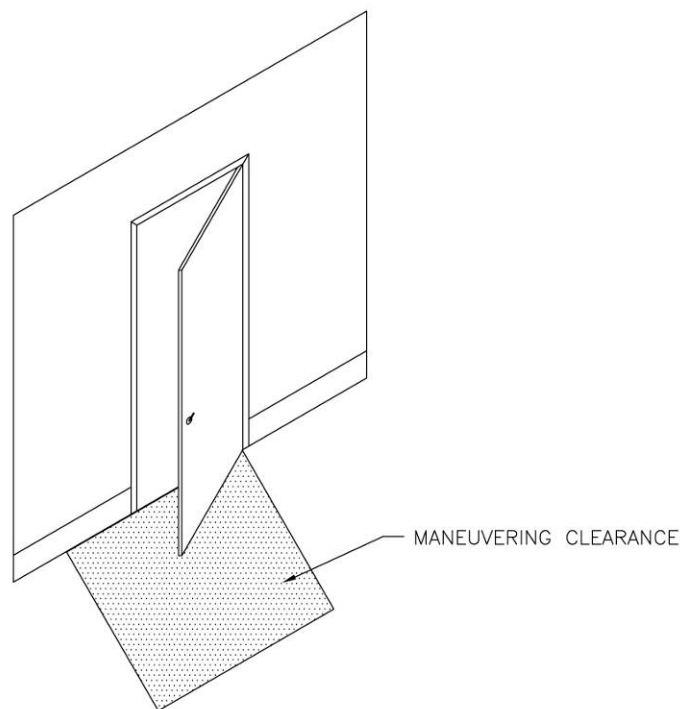


Diagram 6.01 – DOOR MANEUVERING CLEARANCE DIAGRAM

**Note:** The maximum height of the door handle or lever is 48 inches; 36 inches is a recommended minimum height. Hardware located below 34 inches must not reduce the clear width at the door to less than 32 inches.

*This manual is for the use of Burger King Corporation employees, franchisees and their assigns. It is to be used as reference and as an aid to removing barriers to accessibility that may exist for our customers. It does not give legal opinions and is not to be relied upon for such. Burger King Corporation does not guarantee the accuracy or completeness of the document, and is not responsible for errors or omissions. Each franchisee is cautioned that accessibility codes can vary from state to state and town to town, and to seek professional advice for their specific situation to ensure compliance with the ADA and with all state and local codes.*

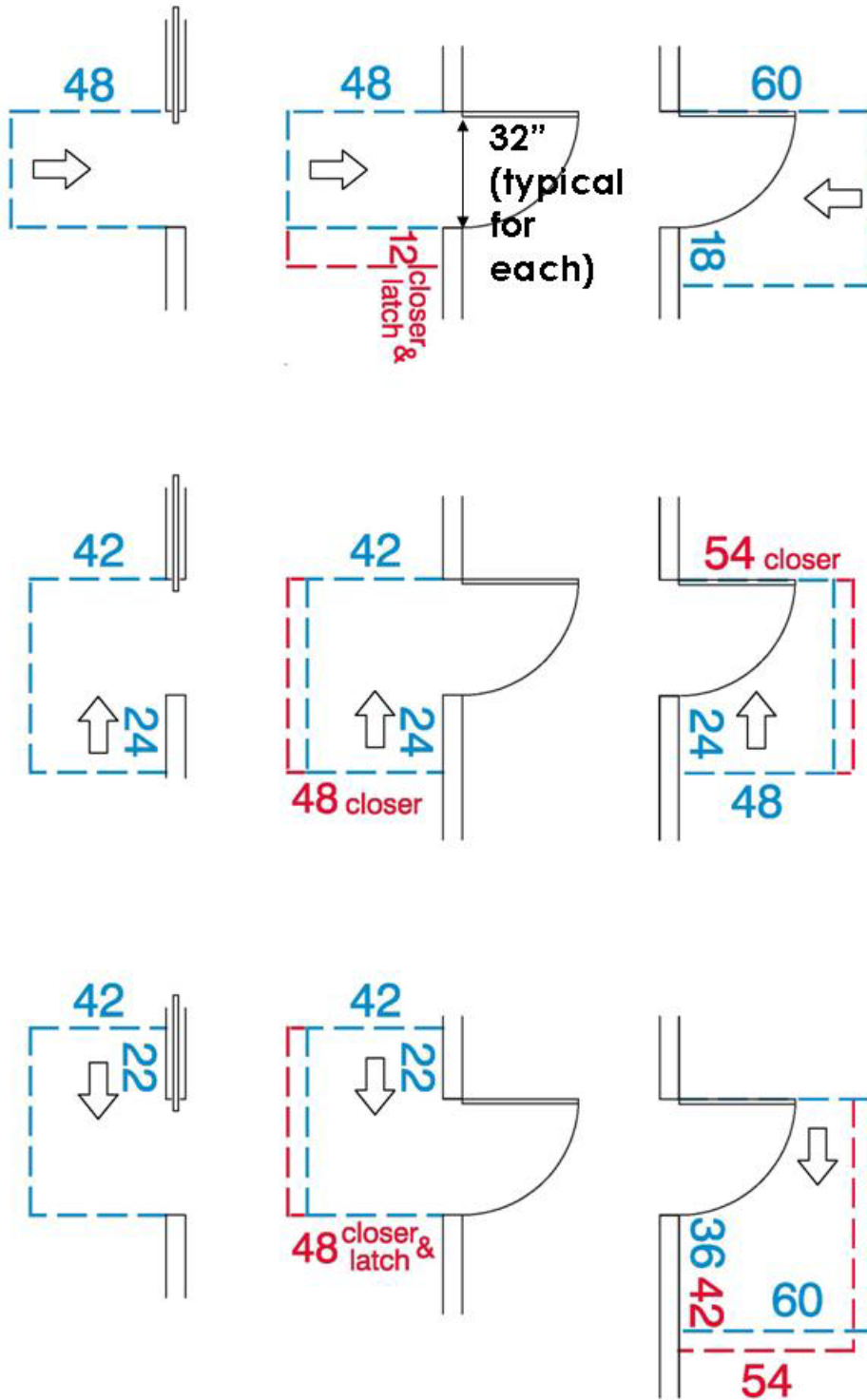


Diagram 6.02 – REQUIRED DOOR MANEUVERING CLEARANCES

**Note:** Door openings must provide a clear width of 32 inches min. measured from the face of the open door (at 90 degrees) to the stop. Arrows indicate direction of approach.

*This manual is for the use of Burger King Corporation employees, franchisees and their assigns. It is to be used as reference and as an aid to removing barriers to accessibility that may exist for our customers. It does not give legal opinions and is not to be relied upon for such. Burger King Corporation does not guarantee the accuracy or completeness of the document, and is not responsible for errors or omissions. Each franchisee is cautioned that accessibility codes can vary from state to state and town to town, and to seek professional advice for their specific situation to ensure compliance with the ADA and with all state and local codes.*



There are specific dimensions required when vestibules are used as well, depending on the directions that the doors swing. Refer to Diagram 6.03. If two doors create a vestibule condition, there must be a 30 inches wide by 48 inches deep clear space for a wheelchair in the vestibule outside of the swing of any door. In a remodeling situation, where these distances often do not exist, there are options to achieve compliance. Eliminating one of the doors is often an option, as is changing the swing of the door to the opposite direction. Care must be given to ensure the proper clearance is still maintained on both sides of the door that is changed. Another option is to install an automatic door operator on the doors, so that they operate simultaneously upon button command.

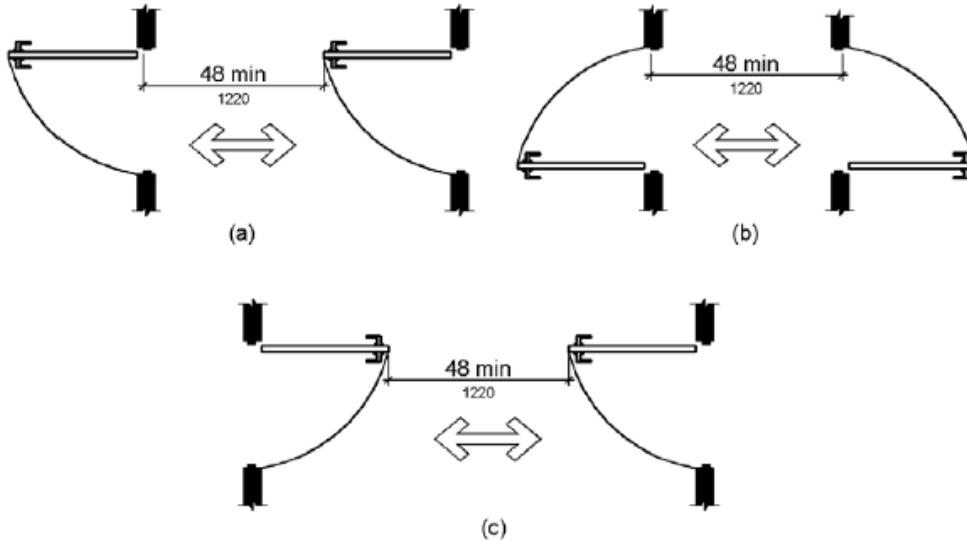


Diagram 6.03 – VESTIBULE DOOR SWING CLEARANCES

Care must be taken to ensure that the speed in which a door closes is not too fast. The door closer should be adjusted regularly so that from an open position of 90 degrees, the time required to close the door to a position of 12 degrees from the latch is a minimum of 5 seconds. The maximum amount of force allowed for opening any interior door is 5 pounds.

Refer to Section XII of this Manual.

Refer to Sections 6.00, 12.00 and 13.00 of the Burger King 2010 Standards ADA Checklist Version 1.1

## VII. Queuing Aisle

Our customers must have access to the order counter by going through the queuing aisle. The clear space between the railings must be wide enough, and an area must be provided for turning at each end, or anywhere the direction of travel changes. If the clear distance between the rails, or between the rail and the front counter, is at least 42 inches, a 48 inch minimum turning area at the end of each aisle is required. The alternative to this is to provide at least 36 inches clear between the rails, or between the rail and the front counter, with at least a 60 inch by 60 inch turning area at each end. It is highly recommended that a little extra width be provided at each of these areas for customer convenience and in fact, Burger King Corporation calls for an extra 2 inches to be added to each of these dimensions as a standard. Refer to Diagram 7.01. The additional 2 inches are shown.

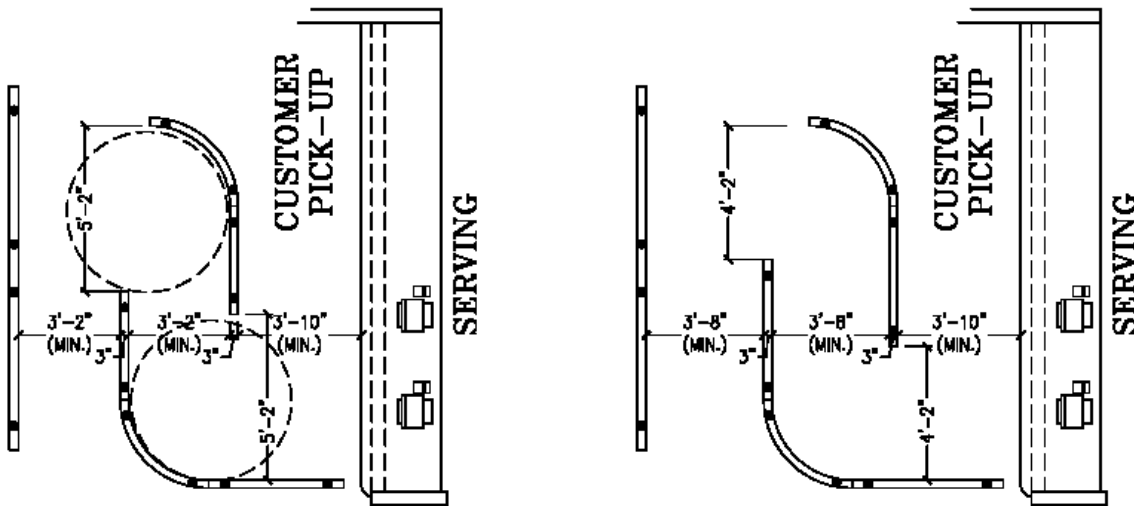
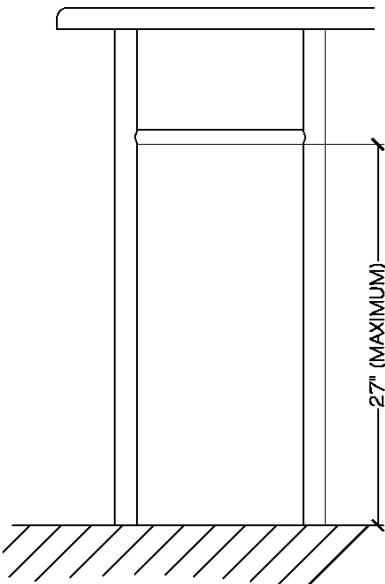


Diagram 7.01 – QUEUE RAIL OPTIONS

In renovation situations, it can sometimes be difficult to achieve these dimensions. Some options to consider would be to remove one of the dividing rails, or remove the rails at the ends. Be sure not to position promotional materials or other obstructions where they could obstruct the clear space.

The railings themselves present a “protruding object” condition that requires a detectable element between the floor and a maximum of 27 inches above. Usually this is accomplished with a lower rail that can be detected with the long white cane.

Diagram 7.02 – QUEUE RAIL HEIGHT DETECTION



*This manual is for the use of Burger King Corporation employees, franchisees and their assigns. It is to be used as reference and as an aid to removing barriers to accessibility that may exist for our customers. It does not give legal opinions and is not to be relied upon for such. Burger King Corporation does not guarantee the accuracy or completeness of the document, and is not responsible for errors or omissions. Each franchisee is cautioned that accessibility codes can vary from state to state and town to town, and to seek professional advice for their specific situation to ensure compliance with the ADA and with all state and local codes.*



Photograph 7.03 – QUEUE RAIL

Refer to Section 7.00 of the Burger King 2010 Standards ADA Checklist Version 1.1

*This manual is for the use of Burger King Corporation employees, franchisees and their assigns. It is to be used as reference and as an aid to removing barriers to accessibility that may exist for our customers. It does not give legal opinions and is not to be relied upon for such. Burger King Corporation does not guarantee the accuracy or completeness of the document, and is not responsible for errors or omissions. Each franchisee is cautioned that accessibility codes can vary from state to state and town to town, and to seek professional advice for their specific situation to ensure compliance with the ADA and with all state and local codes.*

## VIII. Front Service Counter

The front service counter is required to have a customer ordering area that is a minimum of 36 inches wide and that is a maximum height of 34 inches above the floor. The 36 inches of width must be clear of any obstructions; POS units, promotional materials, etc. The credit card reader must either be on a cord long enough to reach to the lap of a customer using a wheelchair, or be placed within 10 inches of the customer side edge of the counter. If there is a signature pad for credit card use, that device must also be on a cord long enough to reach to the lap of a customer using a wheelchair, or be placed where the signature pad surface is no more than 34 inches above the floor. The front service counter must also have a pick-up area that is a minimum of 36 inches wide and a maximum height of 34 inches above the floor. This 36 inches of width must also be kept clear of obstructions; promotional materials, napkins, straws, etc. In some of our older restaurants the front counter had an over-shelf that was much higher than the 34 inches. If this exists, at a minimum the portions of this over-shelf must be removed to allow for the required counter sizes. Burger King Corporation recommends that the entire over-shelf be removed.

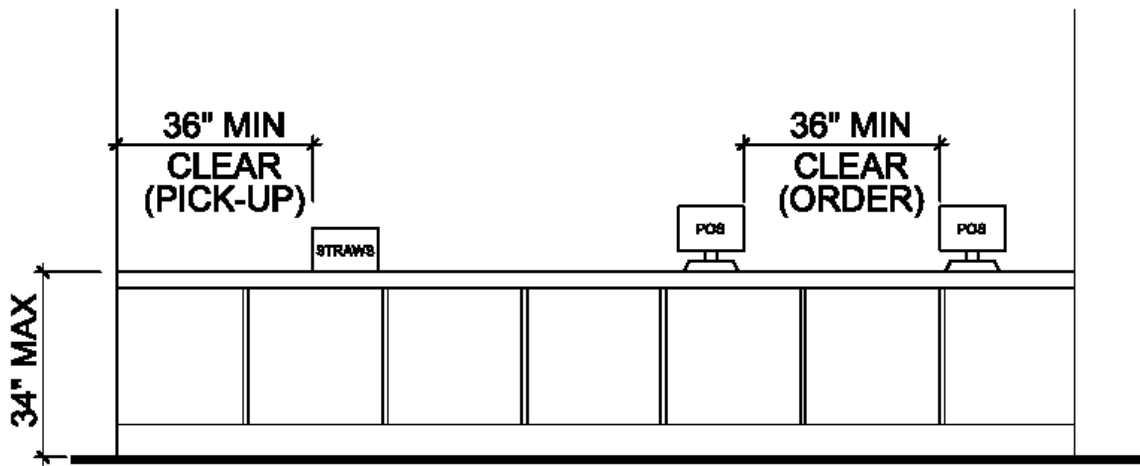


Diagram 8.01 – SERVING COUNTER HEIGHT AND CLEARANCES

At the front counter, be sure picture menus are available (See Section I), and that crew members understand how to accommodate customers with special needs, always being helpful and courteous.

Refer to 4. Definitions “Reach Ranges” in this Manual

Refer to Section 8.00 of the Burger King 2010 Standards ADA Checklist Version 1.1

## IX. Self Service Condiments and Drinks Counter

People seated in wheelchairs or people with limited ranges of mobility can have difficulty reaching items, and people with limited dexterity can have difficulties grasping or manipulating them. Therefore, anything our customers normally use to serve themselves must be made compliant. Although the maximum height of the self-serve drinks station counter should not be higher than 34 inches above the floor, Burger King Corporation requires that it not be more than 33-1/2 inches high. This allows for easier access to the drinks equipment. If there are multiples of some items on the drinks counter, only one of each is required to be accessible. The operating part of accessible items must be placed within 24 inches of the front of the counter, and no higher than 46 inches above the floor. In addition, if the side of the drinks counter is positioned next to a wall, there must be at least 9 inches from that wall to the nearest dispenser. Burger King Corporation recommends that it be no closer than 10 inches.

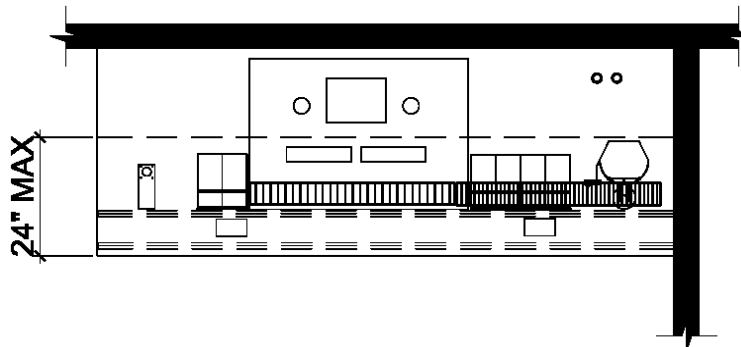


Diagram 9.01 – SELF SERVE DRINK PLAN

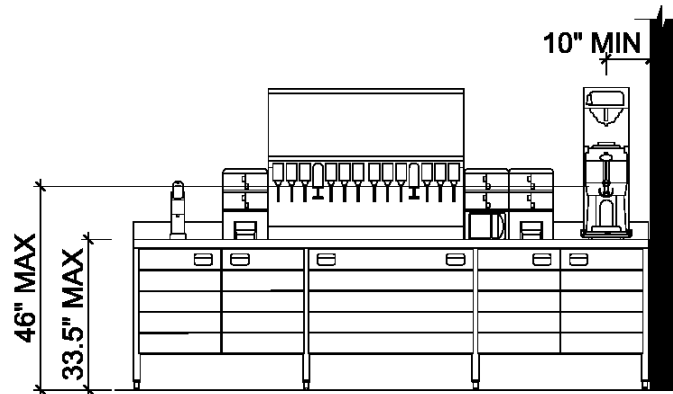


Diagram 9.02 – SELF SERVE DRINK ELEVATION

Refer to 4. Definitions “Reach Ranges” and “Closed Fist and Flail Hand” in this Manual

Refer to Section 9.00 of the Burger King 2010 Standards ADA Checklist Version 1.1

*This manual is for the use of Burger King Corporation employees, franchisees and their assigns. It is to be used as reference and as an aid to removing barriers to accessibility that may exist for our customers. It does not give legal opinions and is not to be relied upon for such. Burger King Corporation does not guarantee the accuracy or completeness of the document, and is not responsible for errors or omissions. Each franchisee is cautioned that accessibility codes can vary from state to state and town to town, and to seek professional advice for their specific situation to ensure compliance with the ADA and with all state and local codes.*

## X. Accessible Interior Route, Tables and Seating

The accessible route must provide access throughout the restaurant, and is required to extend from the entry doors, through the queue line, to the front counter, the self-serve drinks station, to every accessible table, the playground (if provided), and to the restrooms. If exterior seating is provided, the tables must meet all the same accessibility standards as interior and the accessible tables must be reachable by the accessible route. Diagram 10.01 illustrates the clearance requirements for the accessible route.

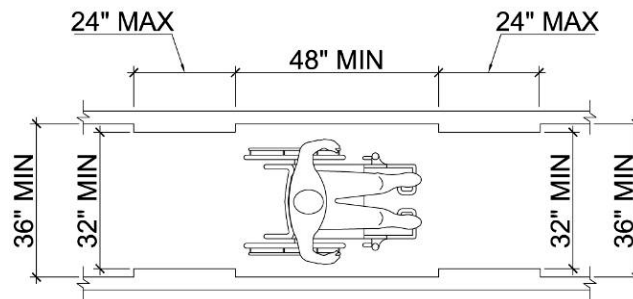


Diagram 10.01 – ACCESSIBLE ROUTE CLEARANCE

Be sure that the accessible route has the proper clear width. All circulation routes must maintain 80 inches of clear height and be sure that nothing protrudes into any route more than 4 inches between the height of 27 inches and 80 inches. Refer to Diagram 10.02.

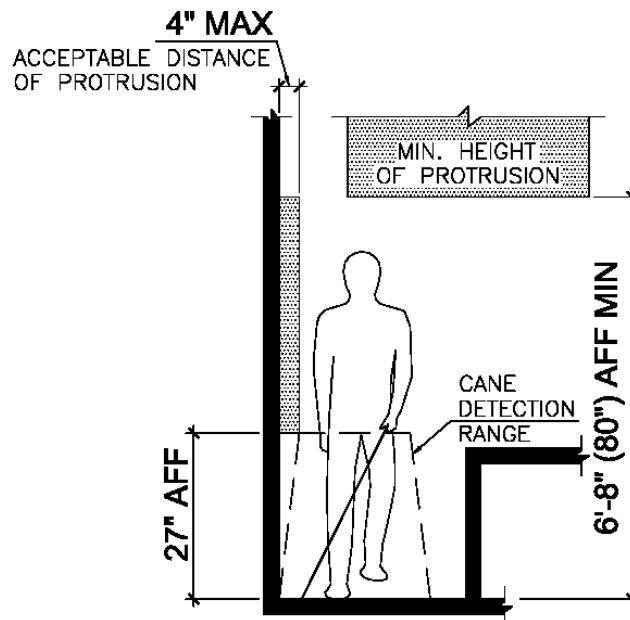


Diagram 10.02 – PROTRUDING OBJECTS AND HEAD CLEARANCE

*This manual is for the use of Burger King Corporation employees, franchisees and their assigns. It is to be used as reference and as an aid to removing barriers to accessibility that may exist for our customers. It does not give legal opinions and is not to be relied upon for such. Burger King Corporation does not guarantee the accuracy or completeness of the document, and is not responsible for errors or omissions. Each franchisee is cautioned that accessibility codes can vary from state to state and town to town, and to seek professional advice for their specific situation to ensure compliance with the ADA and with all state and local codes.*

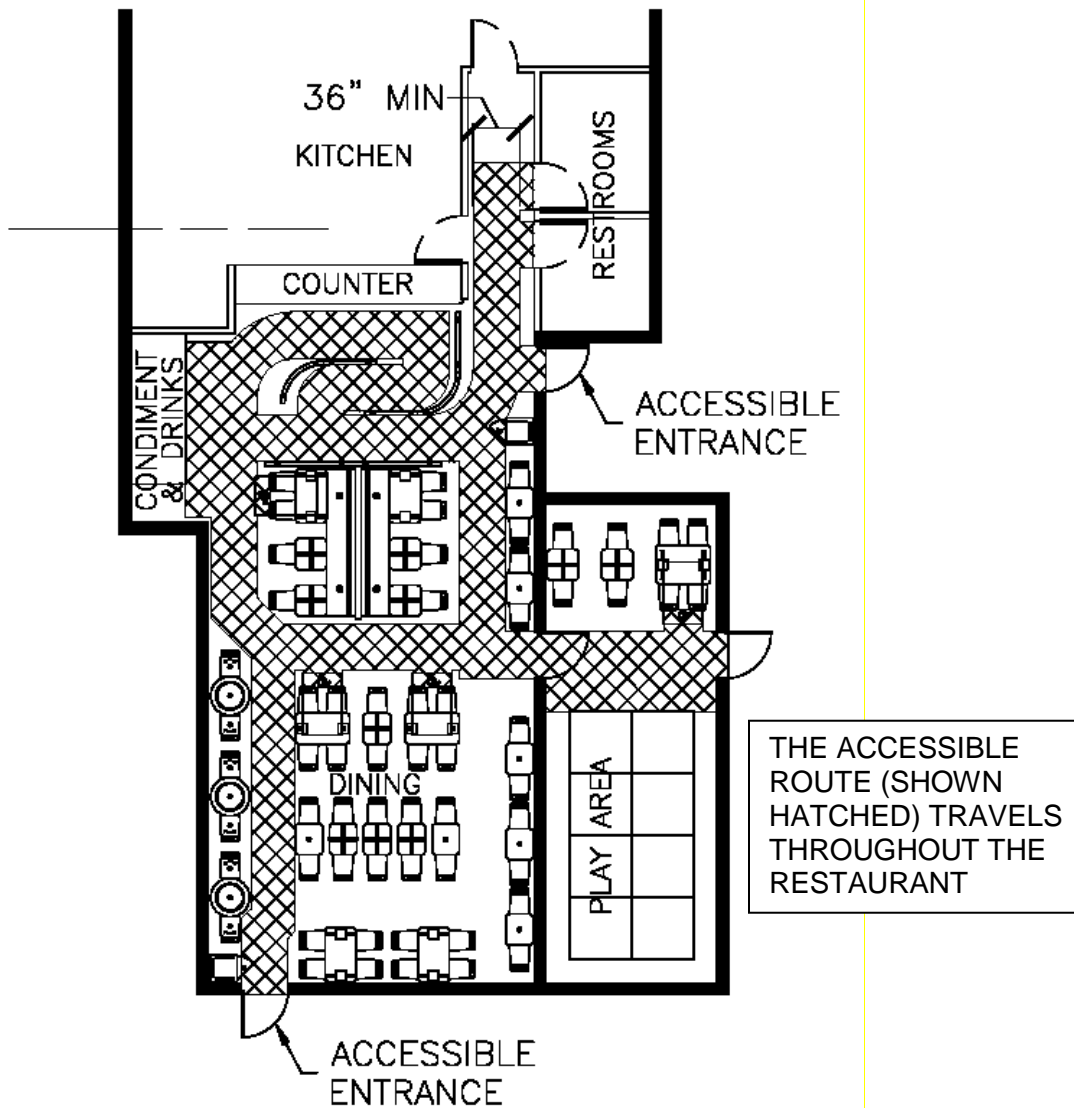


Diagram 10.03 – TYPICAL INTERIOR ACCESSIBLE ROUTE

Accessible tables must have a clear approach and three dimensional clear floor spaces beneath them in order to accommodate wheelchair users. The required clear floor space must be clear of all obstructions and fixed objects. The accessible route is required to reach every accessible table. A minimum of 5% of all seating must be accessible. If there are two or more types of dining areas (i.e. dining room, play area, outdoor seating), accessible tables and route must be provided in each area.

*This manual is for the use of Burger King Corporation employees, franchisees and their assigns. It is to be used as reference and as an aid to removing barriers to accessibility that may exist for our customers. It does not give legal opinions and is not to be relied upon for such. Burger King Corporation does not guarantee the accuracy or completeness of the document, and is not responsible for errors or omissions. Each franchisee is cautioned that accessibility codes can vary from state to state and town to town, and to seek professional advice for their specific situation to ensure compliance with the ADA and with all state and local codes.*

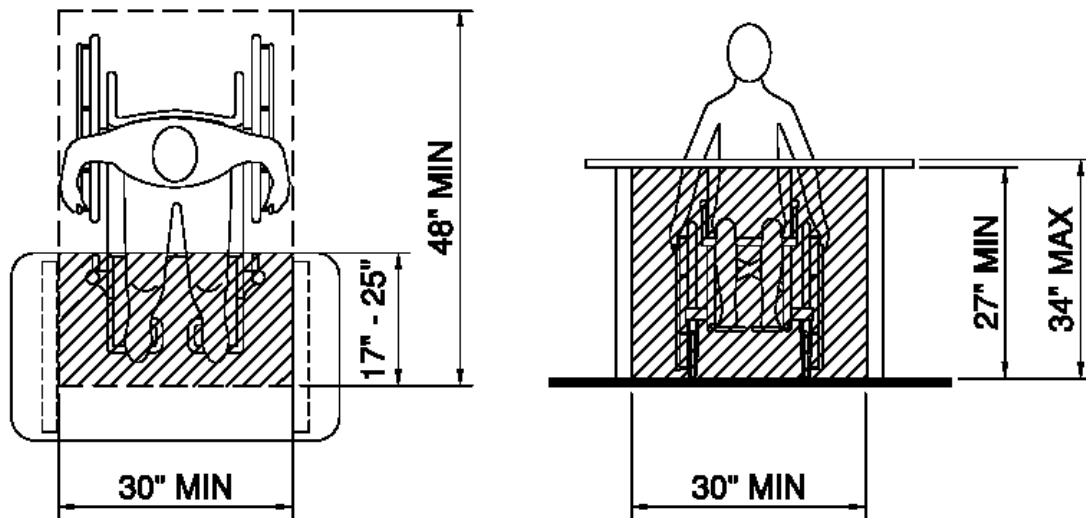


Diagram 10.04 – TYPICAL TABLE CLEARANCE

**Note:** Minimum 27 inches high unobstructed knee space is required beneath the table for a depth of 17 inches minimum and 25 inches maximum. Above the table, the accessible reach is limited to the depth of the clear floor space provided below.

When remodeling Burger King restaurants, be sure that at least 5% of the seating meets these requirements. Often, removing a core-drilled seat or table is enough to provide enough space for the accessible path. Be sure that trash units, promotional materials, newspaper racks, etc do not obstruct the path.



Photograph 10.05 – ACCESSIBLE TABLE

Refer to Section III, VI, VII, VIII, and IX in this Manual

Refer to Sections 3.00, 6.00, 7.00, 10.00 and 11.00 of the Burger King 2010 Standards ADA Checklist Version 1.1

*This manual is for the use of Burger King Corporation employees, franchisees and their assigns. It is to be used as reference and as an aid to removing barriers to accessibility that may exist for our customers. It does not give legal opinions and is not to be relied upon for such. Burger King Corporation does not guarantee the accuracy or completeness of the document, and is not responsible for errors or omissions. Each franchisee is cautioned that accessibility codes can vary from state to state and town to town, and to seek professional advice for their specific situation to ensure compliance with the ADA and with all state and local codes.*



## XI. Play Areas

Play areas must be located on an accessible path, and the doors in and out of play area rooms must be compliant. There must also be a 60 inch wide approach to the play equipment that has a minimum of 80 inches clear head room. There must be at least one compliant entrance to the play equipment when three or fewer entry points exist, or two compliant entrances with four or more entry points. Transfer surfaces with transfer supports are to be provided at these entrances. The transfer platform is to be at least 14 inches deep and 24 inches wide, and range between 11 and 18 inches above the floor. Some examples of the transfer supports are handrails, poles or bars. These must have a gripping surface that is between .95 inches and 1.55 inches in diameter. In addition, there must be a clear floor space provided at these accessible entry points that is at least 30 inches wide and 48 inches deep. This space must be centered along the long side of each transfer surface.

All elevated play equipment must be accessed by ramps not exceeding 12 inches in height with a 1:16 maximum slope. These ramps must have handrails that are between 20 inches and 28 inches from the floor to the top of the handrail.

If play tables are provided, they must be located on the accessible route, and have surfaces that are at least 26 inches above the floor, but not higher than 30 inches above the floor. They must have knee clearance that is at least 24 inches high, 17 inches deep, and 30 inches wide. Freestanding game units must also be located on the accessible route, and have a 30 inch wide and 48 inch deep clear floor space. All controls or operating elements for the game units must be located within the reach ranges shown in the “4. Definitions” section of this manual, and be operable with a closed fist.

***If it is necessary to make modifications to a play area, it is the individual Franchisee’s responsibility to hire competent professionals to ensure compliance with all state and local building and safety codes and regulations. This also applies to ADA criteria. It should be noted that the more restrictive code will always prevail, whether it be Local, State, or Federal.***



*This manual is for the use of Burger King Corporation employees, franchisees and their assigns. It is to be used as reference and as an aid to removing barriers to accessibility that may exist for our customers. It does not give legal opinions and is not to be relied upon for such. Burger King Corporation does not guarantee the accuracy or completeness of the document, and is not responsible for errors or omissions. Each franchisee is cautioned that accessibility codes can vary from state to state and town to town, and to seek professional advice for their specific situation to ensure compliance with the ADA and with all state and local codes.*

Photograph 11.01 – PLAYGROUND TRANSFER STATION (ON LEFT)



Photograph 11.02 – PLAY TABLE

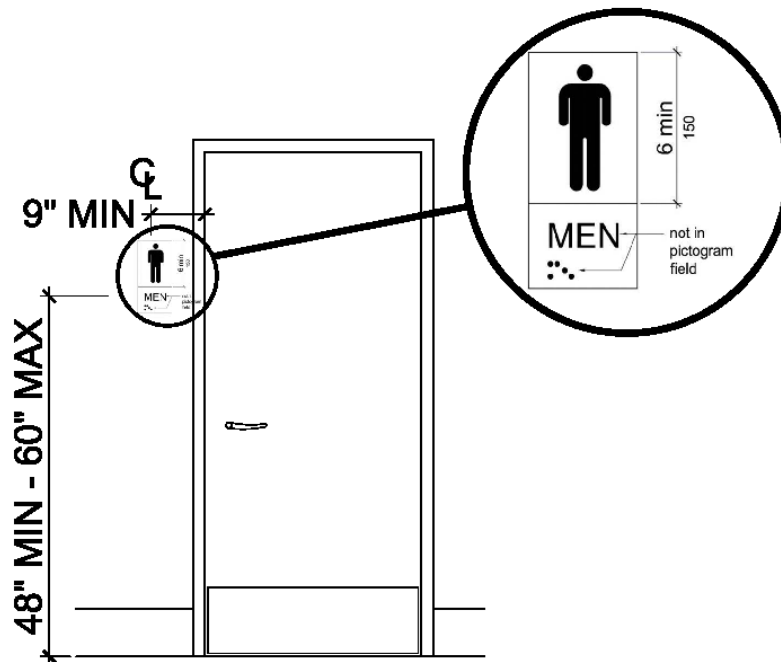
Refer to “4. Definitions”, Section III, VI, and X of this Manual

Refer to Sections 3.00, 6.00, 10.00 and 11.00 of the Burger King 2010 Standards ADA Checklist Version 1.1

*This manual is for the use of Burger King Corporation employees, franchisees and their assigns. It is to be used as reference and as an aid to removing barriers to accessibility that may exist for our customers. It does not give legal opinions and is not to be relied upon for such. Burger King Corporation does not guarantee the accuracy or completeness of the document, and is not responsible for errors or omissions. Each franchisee is cautioned that accessibility codes can vary from state to state and town to town, and to seek professional advice for their specific situation to ensure compliance with the ADA and with all state and local codes.*

## XII. Restrooms

There are many items that make up an accessible restroom; identifying signage, accessible doors, appropriate turning space, heights and positioning of toilets, lavatories, mirrors, dispensers, etc. The restroom itself must be located on an accessible route in the restaurant (See Section X). At least one of every type of fixture provided must be accessible. This section of the manual breaks down these items for easier reference.



12.01 – RESTROOM IDENTIFICATION SIGNAGE

### A. Signage

Identification signage must be provided at the entrance to the restrooms. If there is a single vestibule for both, signage should be provided at the exterior vestibule door as well. The sign is to be located on the wall, outside of the swing of the door, on the latch side. It may otherwise be located on the face of an in-swinging door that has a closer, but not a device that holds it open. The signs must have tactile letters and Braille raised at least 1/32 inch, with the height of the tactile characters between 5/8 inch and 2 inches. The sign must be positioned so that the baseline of the lowest tactile character is at least 48 inches above the floor, and the baseline of the highest tactile character not higher than 60 inches. The sign must have a non-glare, high contrasting surface. (See Diagram 12.01) Some state and local codes have different signage requirements which must be complied with.

***It is the individual Franchisee's responsibility to hire competent professionals to ensure compliance with all state and local building codes and regulations. This also applies to ADA criteria. It should be noted that the more restrictive code will always prevail, whether it be Local, State, or Federal.***

### B. Entry Door

*This manual is for the use of Burger King Corporation employees, franchisees and their assigns. It is to be used as reference and as an aid to removing barriers to accessibility that may exist for our customers. It does not give legal opinions and is not to be relied upon for such. Burger King Corporation does not guarantee the accuracy or completeness of the document, and is not responsible for errors or omissions. Each franchisee is cautioned that accessibility codes can vary from state to state and town to town, and to seek professional advice for their specific situation to ensure compliance with the ADA and with all state and local codes.*

The hardware for the restroom entry doors must be located between 34 inches and 48 inches above the floor, and must be able to be operated with a closed fist or a flail hand. The door must be easy to open, requiring no more than 5 lb/ft of pressure to operate. If the door has a closer, it must be adjusted so that it takes 5 seconds or more to go from being open at 90 degrees to being 12 degrees from the latch.

The clear spaces shown in Section VI (Diagram 6.02) must be provided on both sides of the door – for entering and exiting the room. In a remodeling situation, sometimes doors can be brought into compliance by changing the swing of the door, or possibly installing an automatic door operator. If a restroom vestibule condition exists, there must be a 30 inches wide by 48 inches deep clear space for a wheelchair in the vestibule outside of the swing of any door. Unless required by a local municipality, sometimes eliminating one of the doors is an option. If automatic door operators are installed on both doors, they must operate simultaneously upon button command.

If thresholds exist, be sure that they don't have a maximum height of over 1/2 inch. Any portion of the threshold that is over 1/4 inch in height must be beveled at 1:2.

Often, when people using wheelchairs approach a door their footrests come in contact with the door. Therefore, the lower 10 inches of the push side of all doors must be smooth or have a kick plate to allow the footrests to slide smoothly.

**C. Turning Space**

Once inside the restroom, there must be enough space provided to completely turn a wheelchair around. This is provided by either a 60 inch clear diameter area or a T-turning space. A door opened to any position may encroach on this space. This can be a problem in some older restrooms. Sometimes eliminating a stall can open up the area enough to provide the turning space.

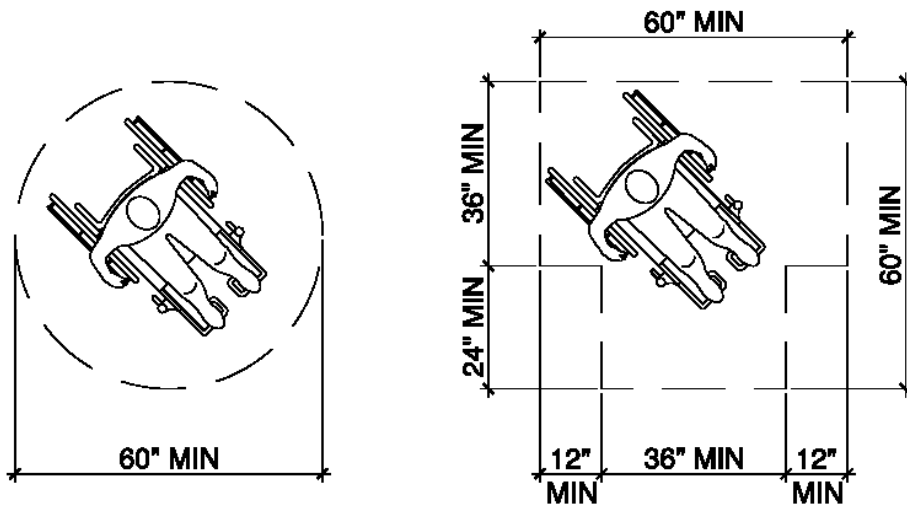


Diagram 12.02 – 60 INCH AND “T” TURNING SPACE DIAGRAM

**D. Lavatories (Hand Sink)**

At least one lavatory in each restroom must be accessible, and have a 30 inch wide by 48 inch deep clear space for its user. The lavatory may not be placed so that it impedes the clear space

*This manual is for the use of Burger King Corporation employees, franchisees and their assigns. It is to be used as reference and as an aid to removing barriers to accessibility that may exist for our customers. It does not give legal opinions and is not to be relied upon for such. Burger King Corporation does not guarantee the accuracy or completeness of the document, and is not responsible for errors or omissions. Each franchisee is cautioned that accessibility codes can vary from state to state and town to town, and to seek professional advice for their specific situation to ensure compliance with the ADA and with all state and local codes.*

required for the toilet, although the clear space for the lavatory and the clear space for the toilet may overlap (See Toilets below.) The top of this lavatory must be no higher than 34 inches above the floor. There must be a knee clearance space provided under the lavatory that is at least 27 inches high and 30 inches wide, that extends at least 8 inches under the lavatory. In addition, there must be a 9 inch high and 30 inches wide toe space that extends at least 17 inches deep under the lavatory. Be sure that all pipes under the lavatory are insulated to protect legs that may have limited or heightened sensations and would be vulnerable to temperature changes or to abrasions. The faucet hardware must be automatic (operating with sensors) or operable with a closed fist or flail hand.

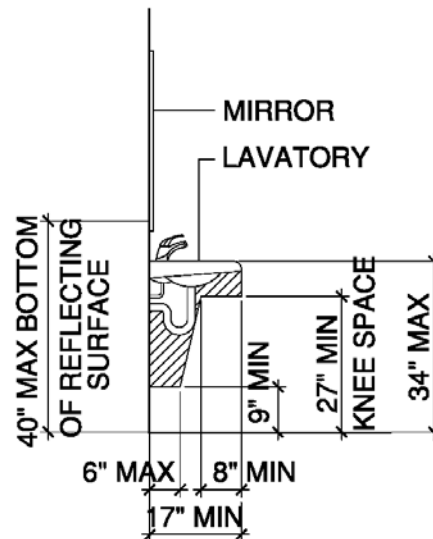


Diagram 12.03 – LAVATORY CLEAR SPACE

### E. Dispensers and Accessories

At least one of every type of dispenser or accessory provided must be accessible. It must be located on an accessible route (See Section X), be operable with a closed fist or flail hand, must have a 30 inch by 48 inch clear floor space for the customer, and not protrude more than 4 inches from the wall. Also, refer to “Reach Ranges” in “4. Definitions” section of this manual:

1. **Soap and Sanitizer Dispensers** – Any operable controls must be located no more than 48 inches above the floor. Automatic dispensers may be used.
2. **Paper Towel Dispensers** – Must be located so that the access to the towels and any portion of any operating device is no higher than 48 inches above the floor. It must be operable with a closed fist or flail hand or be an automatic dispenser.
3. **Toilet Paper Dispenser** – This dispenser is to be located so that the center of the dispenser is between 7 and 9 inches in front of the bowl of the toilet. The outlet of the paper must not be closer to the floor than 15 inches and no higher than 48 inches above the floor. If it is positioned above the grab bar, there must be at least 12 inches between the bottom of the dispenser and the top of the grab bar. If it is positioned below the grab bar, there must be at least 1-1/2 inches between the bottom of the bar and the top of the dispenser. The dispenser must allow continuous paper flow.
4. **Toilet Seat Cover Dispenser** – The opening of the dispenser must not be higher than 48 inches above the floor, or lower than 15 inches above the floor.

*This manual is for the use of Burger King Corporation employees, franchisees and their assigns. It is to be used as reference and as an aid to removing barriers to accessibility that may exist for our customers. It does not give legal opinions and is not to be relied upon for such. Burger King Corporation does not guarantee the accuracy or completeness of the document, and is not responsible for errors or omissions. Each franchisee is cautioned that accessibility codes can vary from state to state and town to town, and to seek professional advice for their specific situation to ensure compliance with the ADA and with all state and local codes.*

5. **Hand Dryers** – Any operable controls must be located no more than 48 inches above the floor.
6. **Mirrors** - If mirrors are provided in the restroom, at least one must be positioned so that a person in a seated position can use it. Therefore, it must be located so that the bottom of its reflecting surface (not the frame) is no higher than 40 inches above the floor (See Diagram 12.03). Consider installing an additional mirror or even a full length mirror instead of moving one. However, if this mirror is not located over a lavatory or counter, the bottom of the reflecting edge must not be higher than 35 inches above the floor.
7. **Diaper Changing Station** – The station must have its pull-down handle and all other operable controls located a maximum of 48 inches above the floor. It must be operable without pinching, grasping, or twisting the wrist, and require no more than 5 lb/ft of pressure to operate. When open the station's work surface must be at least 28 inches above the floor, but no more than 34 inches above the floor. Also when open, there must be at least 27 inches of knee clearance. Burger King Corporation does not require diaper changing stations, and unless required by a local code or municipality, it may be better to remove it if it cannot be easily brought into compliance.
8. **Trash Receptacles** – The opening of the receptacle may not be higher than 48 inches above the floor, or lower than 15 inches above the floor. Often in Burger King restaurants, freestanding trash cans have been placed near the door exiting the restroom, or in some other space that violates either the clear floor space required for a door or fixture (lavatory, toilet, urinal, etc) or in the required 60 inch clear floor space turning area. Crew members need to be educated in the proper placement of freestanding trash units. Recessed trash cans are recommended.
9. **Coat Hook** – May be located on a stall door or wall, but at least one must be located between 15 inches and 48 inches above the floor. Burger King Corporation recommends it be between 38 and 40 inches above the floor.
10. **Sanitary Napkin Disposal** - This disposal unit is to be located so that the opening of the unit is not lower to the floor than 15 inches and no higher than 48 inches above the floor. If it is positioned above the grab bar, there must be at least 12 inches between the bottom of the unit and the top of the grab bar. If it is positioned below the grab bar, there must be at least 1-1/2 inches between the bottom of the bar and the top of the unit.

## F. Toilets

The top of the seat of an accessible toilet must be between 17 inches and 19 inches above the floor. The center of the toilet must be between 16 inches and 18 inches from a corner. The flush control must be on the “open” side of the toilet (away from the closest wall), a maximum of 48 inches above the floor, and operable with a closed fist or flail hand. The use of automatic flush valves is compliant, so if an existing toilet has the valve on the incorrect side, consider installing an automatic valve.

Grab bars must be provided at the accessible toilet. Be sure that the walls to which they will be attached have the structural strength to accommodate them. One horizontal bar is to be provided on the wall behind the toilet, extending a minimum of 12 inches from the centerline of the toilet toward the near side wall (corner). This bar is to be a minimum of 36 inches long, and be positioned so that the top of the gripping surface is between 33 inches and 36 inches above the floor. A second horizontal bar is to be provided on the side wall closest to the toilet. The closest portion of this bar must be placed no farther than 12 inches from the corner. This bar is to be a

*This manual is for the use of Burger King Corporation employees, franchisees and their assigns. It is to be used as reference and as an aid to removing barriers to accessibility that may exist for our customers. It does not give legal opinions and is not to be relied upon for such. Burger King Corporation does not guarantee the accuracy or completeness of the document, and is not responsible for errors or omissions. Each franchisee is cautioned that accessibility codes can vary from state to state and town to town, and to seek professional advice for their specific situation to ensure compliance with the ADA and with all state and local codes.*

minimum of 42 inches long and project a minimum of 54 inches from the rear wall (corner). Position it so that the top of the gripping surface is between 33 inches and 36 inches above the floor. Be sure there are no obstructions for 12 inches above or 1-1/2 inches below either bar.

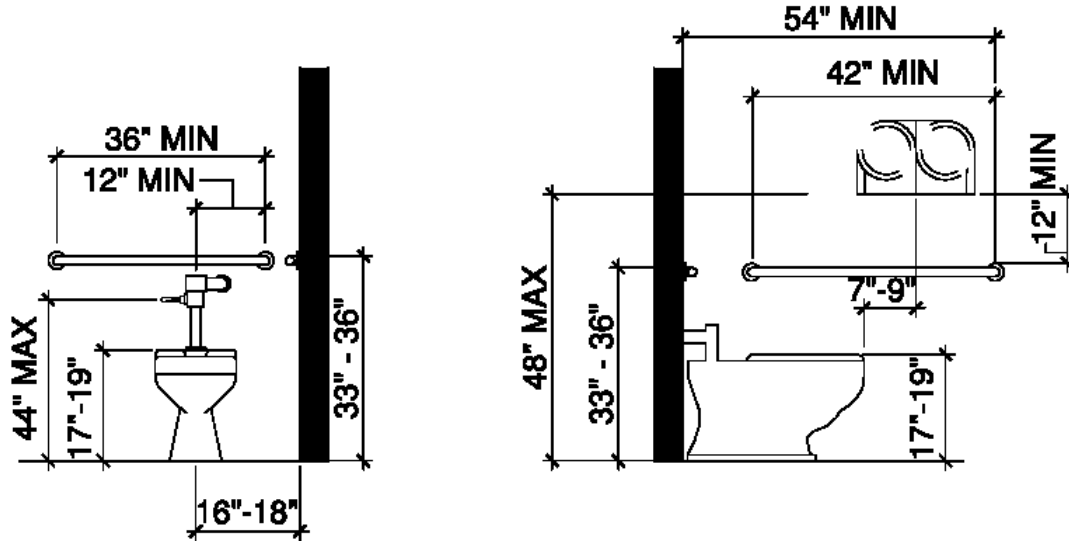


Diagram 12.04 – TOILETS

Clearance is required around the toilet. This space must be a minimum of 60 inches measured perpendicular from the side wall and a minimum of 56 inches (if the toilet is wall hung) or 59 inches (if it is floor mounted) measured perpendicular from the rear wall. The lavatory may not be placed so that it impedes this clear space, although the clear space for the lavatory and the clear space for the toilet may overlap (See Lavatories above).

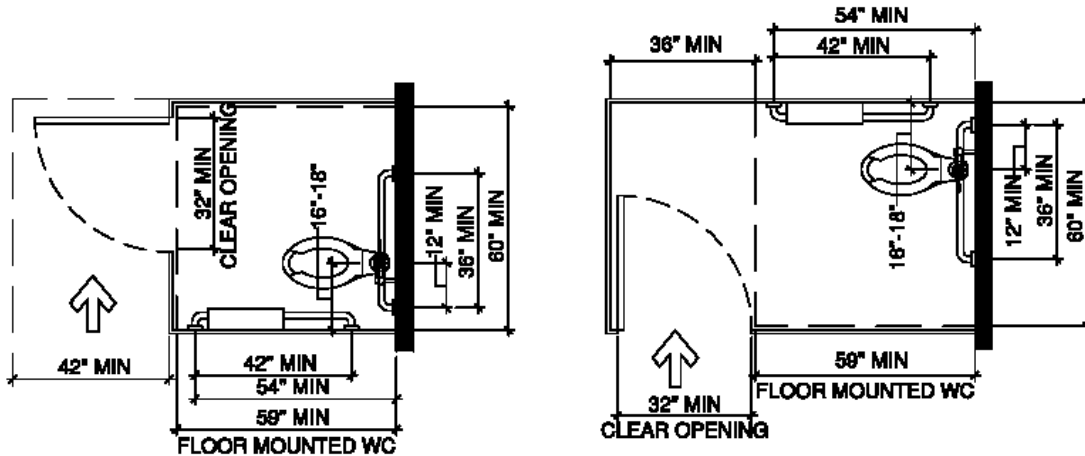


Diagram 12.05 – EXAMPLES OF ACCESSIBLE TOILET STALLS

### G. Toilet Partitions

Where toilet stalls are provided, the compartment must be at least 60 inches wide. The front partition and at least one side partition must provide a toe clearance of a minimum of 9 inches above the floor and a minimum of 6 inches deep beyond the compartment-side face of the partition. The toe space is not required when the compartment is greater than 62 inches deep with a wall-

hung toilet, or greater than 65 inches with a floor mounted toilet. If the partition is wider than 66 inches, the toe clearance at the side is not required either.

The door must have clearances specified previously (See Section VI), and must be located in the corner opposite from the toilet, and no more than 4 inches from the wall. The door hardware must be operable with a closed fist or flail hand.

## H. Urinals

If more than one urinal is provided, one must be accessible. To be accessible, the lip of the urinal must be no higher than 17 inches above the floor, and the lip must extend at least 13-1/2 inches from the rear wall. There must be a clear floor space provided that is a minimum of 30 inches wide (36 if in an alcove over 24 inches deep), and 48 inches deep, measured from the front-most knee and toe clearance area, not the back wall. The flush valve must be no higher than 48 inches above the floor and operable with a closed fist or flail hand. An automatic flush valve may be used. Although it is operationally preferred to have urinals, removing them completely is also an option.

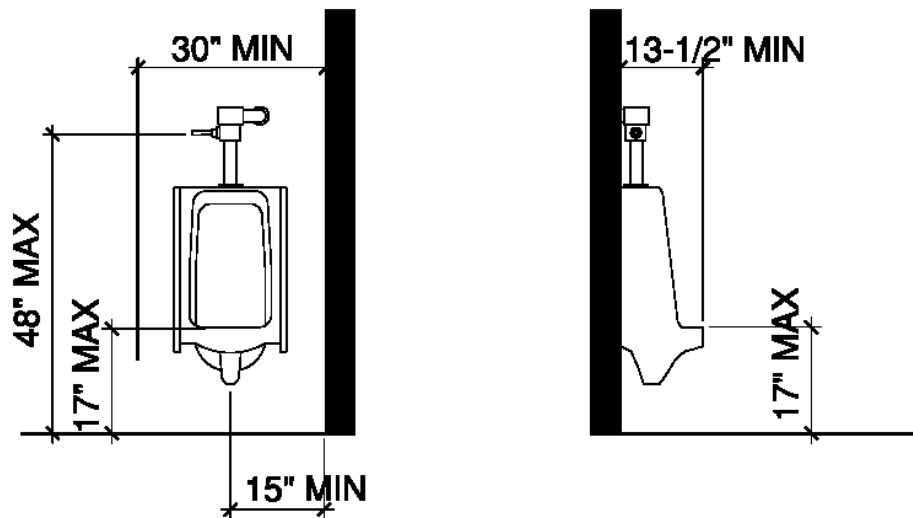
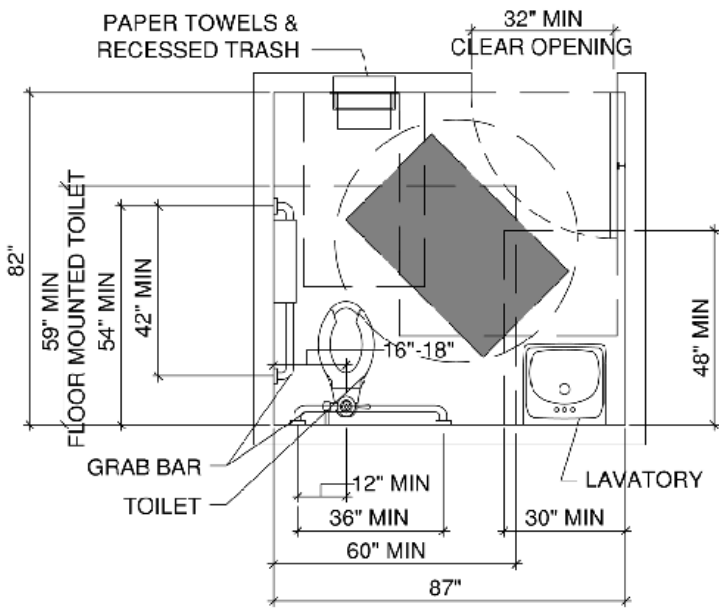


Diagram 12.06 – URINALS

Sometimes, when remodeling restrooms for compliance, it is more cost-effective to change from multiple occupancy restrooms to a single occupancy restroom. Although this is often acceptable, careful thought should be given to customer convenience. For example, a restaurant with 100 seats that often receives bus traffic would probably not want to make this change. In addition, some municipalities will not allow single occupancy restrooms in some situations.

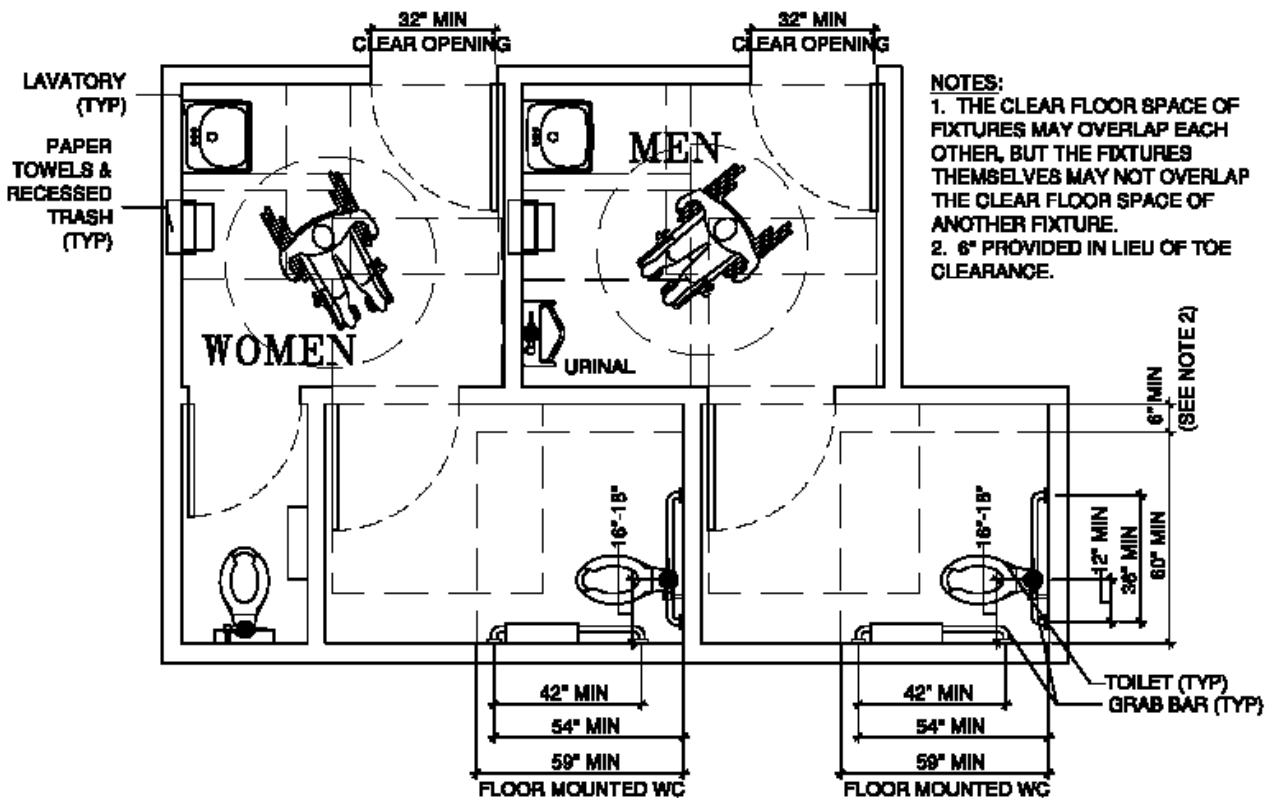
***It is the individual Franchisee's responsibility to hire competent professionals to ensure compliance with all state and local building codes and regulations. This also applies to ADA criteria. It should be noted that the more restrictive code will always prevail, whether it be Local, State, or Federal.***





- NOTES:**
1. IN SINGLE OCCUPANCY RESTROOMS, THE DOOR MAY SWING INTO THE CLEAR FLOOR SPACE OF FIXTURES AS LONG AS A 30 INCH BY 48 INCH CLEAR FLOOR SPACE IS PROVIDED OUTSIDE THE SWING OF THE DOOR (NOT IN MULTIPLE OCCUPANCY).
  2. THE CLEAR FLOOR SPACE OF FIXTURES MAY OVERLAP EACH OTHER, BUT THE FIXTURES THEMSELVES MAY NOT OVERLAP THE CLEAR FLOOR SPACE OF ANOTHER FIXTURE.
  3. WITH SINGLE OCCUPANCY RESTROOMS, BE SURE THE DOOR HAS COMPLIANT PRIVACY HARDWARE.

Diagram 12.07 – ACCESSIBLE TOILET ROOM EXAMPLE



- NOTES:**
1. THE CLEAR FLOOR SPACE OF FIXTURES MAY OVERLAP EACH OTHER, BUT THE FIXTURES THEMSELVES MAY NOT OVERLAP THE CLEAR FLOOR SPACE OF ANOTHER FIXTURE.
  2. 6" PROVIDED IN LIEU OF TOE CLEARANCE.

Diagram 12.08 – TYPICAL MULTIPLE OCCUPANCY RESTROOM EXAMPLE

*This manual is for the use of Burger King Corporation employees, franchisees and their assigns. It is to be used as reference and as an aid to removing barriers to accessibility that may exist for our customers. It does not give legal opinions and is not to be relied upon for such. Burger King Corporation does not guarantee the accuracy or completeness of the document, and is not responsible for errors or omissions. Each franchisee is cautioned that accessibility codes can vary from state to state and town to town, and to seek professional advice for their specific situation to ensure compliance with the ADA and with all state and local codes.*



Photograph 12.09 – TYPICAL RESTROOM PHOTO

Refer to Sections VI and X of this Manual

Refer to Section 6.00, 10.00, 12.00, and 13.00 of the Burger King 2010 Standards ADA Checklist Version 1.1

*This manual is for the use of Burger King Corporation employees, franchisees and their assigns. It is to be used as reference and as an aid to removing barriers to accessibility that may exist for our customers. It does not give legal opinions and is not to be relied upon for such. Burger King Corporation does not guarantee the accuracy or completeness of the document, and is not responsible for errors or omissions. Each franchisee is cautioned that accessibility codes can vary from state to state and town to town, and to seek professional advice for their specific situation to ensure compliance with the ADA and with all state and local codes.*

**Appendix A Burger King 2010 Standards ADA Checklist Version 1.1**

**Burger King 2010 Standards ADA Checklist  
Version 1.1 February 21, 2014**

Store # \_\_\_\_\_ Date of Survey \_\_\_\_\_  
 Store Address, City & Zip \_\_\_\_\_  
 Surveyor Name \_\_\_\_\_

**Instructions for completing the Checklist**  
 1) Complete all questions in each section marking a Yes, No or NA measuring to the closest 1/4".  
 2) Place a check mark in the comment box of any line that has an additional comment, write the comment and the line # reference on the bottom of that sheet.

**References:**  
 2010 Standards - <http://www.access-board.gov/ada-aba/index.htm>  
 1991 ADAAG - <http://www.ada.gov/reg3a.html#Anchor-Appendix-32467>  
 ADAAG Manual - Copies available from BK Corp.

Section	Table of Contents
	Cover Sheet - Instructions - Table of Contents
1	Picture Menus
2	Accessible Parking
3	Accessible Routes
3.10	Telephones
4	Accessible Curb Ramps
5	Accessible Ramps
6	Entry Doors
7	Queuing Aisle
8	Service Counter
9	Self Service Condiments and Drinks Counter
10	Accessible Seating and Tables
11	Interior Accessible Routes and Elements
11.10	Interior Stairs
11.20	Protruding Objects
11.30	Play Areas
11.40	Games/Kiosks/Vending
12	Men's or Unisex Restroom
12.10	Entry Door
12.30	Lavatory
12.40	Dispensers/Accessories
12.50	Toilet
12.80	Ambulatory Compartment
12.90	Urinal
13	Women's or 2nd Unisex Restroom
13.10	Entry Door
13.30	Lavatory
13.40	Dispensers/Accessories
13.50	Toilet
13.80	Ambulatory Compartment
Page 24	Reach Range
Page 25	Door Maneuvering Space Figure 404.2.4
Page 26	Certificate of Compliance



**Universal Designers & Consultants, Inc.**  
 6 Grant Avenue • Takoma Park • MD 20912-4234  
 301.270.2470 v/tty  
 301.270.8199 fax  
[www.UDConsultants.com](http://www.UDConsultants.com)

**Privileged & Confidential  
 Attorney Work Product**

Universal Designers & Consultants, Inc.

*This manual is for the use of Burger King Corporation employees, franchisees and their assigns. It is to be used as reference and as an aid to removing barriers to accessibility that may exist for our customers. It does not give legal opinions and is not to be relied upon for such. Burger King Corporation does not guarantee the accuracy or completeness of the document, and is not responsible for errors or omissions. Each franchisee is cautioned that accessibility codes can vary from state to state and town to town, and to seek professional advice for their specific situation to ensure compliance with the ADA and with all state and local codes.*

Burger King 2010 Standards ADA Checklist

Version 1.0 (1/28/2013)

Line #	Yes	No	N/A	Comment	Question	2010 Standards
<b>1.00</b>					<b>Picture Menus</b>	
1.01					Is signage provided at the drive up menu/order intercom indicating pictures menus are available upon request at the pick-up window?	....
1.02					Are picture menus available at the window and order counter?	....
<b>2.00</b>					<b>Accessible Parking</b>	
2.01					Are all accessible parking spaces on the shortest accessible route (that is 36 inches wide minimum and unobstructed by curbs, vehicle overhangs, protruding objects or any other barriers) to an accessible entrance?	208.3
2.02					Is a Van Accessible parking space with an 8' wide minimum access aisle provided or is there an 11' wide parking space with a 5' wide access aisle?	208.2.4, 502.2
2.03					Is vertical "Van Accessible" signage provided?	502.6
2.04					Do all Van spaces and their access aisles have 98 inches of vertical clearance?	502.5
2.05					Is a second accessible parking space provided for lots with 26 to 50 total parking spaces?	208.2
2.06					Are the required number of accessible parking spaces provided for lots with more than 50 total parking spaces?	208.2
2.07					Is every accessible parking space at least 8' wide?	....
2.08					Is every non-van accessible access aisle at least 5' wide?	208.2 502.3.1
2.09					Do all the accessible parking spaces have an average slope of 2% or less in any direction?	502.4
2.10					Do all the access aisles have an average slope of 2% or less in any direction?	502.4
2.11					Are all access aisles free of encroaching ramps or curb ramps?	502.4
2.12					Are all accessible parking spaces free of encroaching ramps or curb ramps?	502.4
2.13					Do all accessible parking spaces have a International Symbol of Accessibility (ISA) vertical signage?	502.6
2.14					Is every vertical sign with the ISA posted 60 inches minimum measured from the parking surface to the bottom of the sign at each space?	502.6
2.15					Are there stripes painted on each access aisle to discourage parking in that space?	502.3.3

Privileged & Confidential  
 Attorney Work Product  
 Universal Designers & Consultants, Inc.  
 www.udconsultants.com

Store # \_\_\_\_\_  
 BK 2010 Standards ADA Checklist Version 1.1 – 2/21/2014

This manual is for the use of Burger King Corporation employees, franchisees and their assigns. It is to be used as reference and as an aid to removing barriers to accessibility that may exist for our customers. It does not give legal opinions and is not to be relied upon for such. Burger King Corporation does not guarantee the accuracy or completeness of the document, and is not responsible for errors or omissions. Each franchisee is cautioned that accessibility codes can vary from state to state and town to town, and to seek professional advice for their specific situation to ensure compliance with the ADA and with all state and local codes.

Line #	Yes	No	N/A	Comment	Question	2010 Standards
2.16					Is a curb or tire stop provided at each parking space to avoid narrowing a required accessible route?	403.5.1
<b>3.00</b>					<b>Exterior Accessible Routes</b>	
3.01					Are all crosswalks designated with painted stripes or differentiated surface materials?	502.3
3.02					Are all required accessible routes free of abrupt changes in level greater than 1/4 inch in height?	206.2.1 206.2.2 403.4 303
3.03					Are all required accessible routes free of gaps greater than 1/2 inch wide?	206.2.1 206.2.2 403.2 302.3
3.04					Do all accessible routes have running slopes 5% or less? If no, complete ramp or curb ramp sections as appropriate.	206.2.1 206.2.2 403.3
3.05					Do all accessible routes have cross slopes 2% or less?	206.2.1 206.2.2 403.3
3.06					Are all pedestrian paths free of objects protruding more than 4 inches (12 inches if post mounted such as signage) horizontally, between 27 and 80 inches high?	307.2
3.07					Is there 80 inches high minimum head clearance along all pedestrian paths?	
3.08					Is the edge between all pedestrian paths and vehicular ways identified by a change in level (curbs) or truncated dome detectable warnings?	307.4 .....

Privileged & Confidential  
 Attorney Work Product  
 Universal Designers & Consultants, Inc.  
 www.UDCconsultants.com

This manual is for the use of Burger King Corporation employees, franchisees and their assigns. It is to be used as reference and as an aid to removing barriers to accessibility that may exist for our customers. It does not give legal opinions and is not to be relied upon for such. Burger King Corporation does not guarantee the accuracy or completeness of the document, and is not responsible for errors or omissions. Each franchisee is cautioned that accessibility codes can vary from state to state and town to town, and to seek professional advice for their specific situation to ensure compliance with the ADA and with all state and local codes.



Line #	Yes	No	N/A	Comment	Question	2010 Standards
<b>3.10</b>					<b>Telephones</b>	
3.11					Is the public pay phone on an accessible route with a 30 inches by 48 inches minimum clear floor space?	704.2.1
3.12					Does at least one phone at this location have a volume control.	704.3
3.13					Is this phone marked by the volume control symbol?	703.7.2.3
3.14					Is highest operable part of the lowest phone (usually the coin slot centerline) 48 inches or less AFF?	305
3.15					Is the handset cord at least 29" in length?	704.2.4
<b>4.00</b>					<b>Accessible Curb Ramps</b>	
4.01					Is there a smooth transition between the road and every curb ramp?	406.2
4.02					Is the slope of every adjoining gutter or road surface 5% or less?	406.2
4.03					Is every curb ramp 36 inches wide minimum?	406.1
4.04					Is every curb ramp front to back slope 8.3% or less?	406.1
4.05					Are all curb ramp flares sloped 10% or less?	405.2
4.06					Are detectable warnings (truncated domes) provided at every curb ramp?	406.3
4.07					Do detectable warnings on curb ramps contrast visually with the adjoining surfaces?	.... 705.1
4.08					Are there level landings (2% or less slope in any direction) 36 inches deep minimum by 36 inches wide at the top of each curb ramp?	406.4

Privileged & Confidential  
 Attorney Work Product  
 Universal Designers & Consultants, Inc.  
 www.UDCconsultants.com

Store # \_\_\_\_\_  
 BK 2010 Standards ADA Checklist Version 1.1 – 2/21/2014

*This manual is for the use of Burger King Corporation employees, franchisees and their assigns. It is to be used as reference and as an aid to removing barriers to accessibility that may exist for our customers. It does not give legal opinions and is not to be relied upon for such. Burger King Corporation does not guarantee the accuracy or completeness of the document, and is not responsible for errors or omissions. Each franchisee is cautioned that accessibility codes can vary from state to state and town to town, and to seek professional advice for their specific situation to ensure compliance with the ADA and with all state and local codes.*

Line #	Yes	No	N/A	Comment	Question	2010 Standards
5.00					<b>Ramps</b>	
5.01					Does every portion of route that has running slopes greater than 5% and a rise of more than 6 inches have handrails on both sides?	405.8 505
5.02					Do all portions of any accessible ramps have running slopes 8.3% or less?	405.2
5.03					Are all cross slopes 2% or less?	405.3
5.04					Is the clear width of every ramped section at least 36 inches?	405.5
5.05					Is a 5 foot long landing provided at the top and bottom of each ramped section?	405.7
5.06					Are all landings at least as wide as the ramped sections leading to them?	405.7
5.07					Is an intermediate landing provided wherever the rise is more than 30 inches?	405.6
5.08					Is each intermediate landing at least 5 feet long?	405.7
5.09					Are all landings were a change in direction occurs 60 inches deep by 60 inches wide?	405.7
5.10					Are all landings sloped 2% or less?	405.7.1 302
5.11					Is a 12 inches minimum extended ground surface or 4 inch high edge protection provided along each side of every ramp section?	405.9
5.12					Are all handrails located 34 inches to 38 inches AFF?	405.8 505
5.13					Are all the handrails 1-1/4 inches to 1-1/2 inches in diameter?	405.8 505
5.14					Does each handrail have a 12 inches minimum horizontal extension at the top and bottom of each ramp section?	405.8 505

Privileged & Confidential  
 Attorney Work Product  
 Universal Designers & Consultants, Inc.  
 www.UIDConsultants.com

*This manual is for the use of Burger King Corporation employees, franchisees and their assigns. It is to be used as reference and as an aid to removing barriers to accessibility that may exist for our customers. It does not give legal opinions and is not to be relied upon for such. Burger King Corporation does not guarantee the accuracy or completeness of the document, and is not responsible for errors or omissions. Each franchisee is cautioned that accessibility codes can vary from state to state and town to town, and to seek professional advice for their specific situation to ensure compliance with the ADA and with all state and local codes.*

Line #	Yes	No	N/A	Comment	Question	2010 Standards
6.00					<b>Entry Doors</b>	
6.01					Is this an exit only door?	....
6.02					Is there a 36 inches wide minimum unobstructed accessible route from the public sidewalk or right of way to this door (unobstructed by curbs, vehicle overhangs, protruding objects or any other barriers)?	206.4
6.03					Does this door have an ISA decal?	216.6, 703.5
6.04					If the door is not fully accessible, is there directional signage indicating the closest accessible entrance.	216.6
6.05					Can all opening hardware be operated with a closed fist?	404.2.7
6.06					Is the operable portion of all public use door hardware located between 34 inches and 48 inches AFF?	404.2.7
6.07					Is the door closing speed 5 seconds or more from 90 degrees to 12 degrees from the latch for all leaves of this doorway?	404.2.8.1
6.08					Is the clear width of at least one single leaf 32 inches minimum?	404.2.3, 404.2.3
6.09					Does the threshold have an overall height of 1/2 inch maximum?	404.2.5
6.10					Does the threshold have abrupt portions that are 1/4 inch high maximum?	404.2.5
6.11					Does the threshold have a 1:2 maximum bevel for any portion that is more than 1/4 inch high?	404.2.5
6.12					Is there a 10 inches high smooth panel or kick plate located on the base of the push side of all leaves of the doorway?	404.2.10
6.13					Does the door have pull and push side maneuvering spaces that comply with the figure 404.2.4.	404.2.4
6.14					Are the required maneuvering spaces on each side of the door sloped 2% or less in all directions?	404.2.4

Privileged & Confidential  
 Attorney Work Product  
 Universal Designers & Consultants, Inc.  
 www.UDConsultants.com

Store # \_\_\_\_\_  
 BK 2010 Standards ADA Checklist Version 1.1 – 2/21/2014

*This manual is for the use of Burger King Corporation employees, franchisees and their assigns. It is to be used as reference and as an aid to removing barriers to accessibility that may exist for our customers. It does not give legal opinions and is not to be relied upon for such. Burger King Corporation does not guarantee the accuracy or completeness of the document, and is not responsible for errors or omissions. Each franchisee is cautioned that accessibility codes can vary from state to state and town to town, and to seek professional advice for their specific situation to ensure compliance with the ADA and with all state and local codes.*



Line #	Yes	No	N/A	Comment	Question	2010 Standards
<b>7.00</b>					<b>Queuing Aisle</b>	
7.01					Is there a 60 inches long by 60 inches wide minimum turning space at every turn in the path or if the path is at least 42 inches wide is the depth of the turn at least 48 inches?	304.3, 403.5.2
7.02					Is the narrowest clear width between the barriers 36 inches minimum?	403.5.1
7.03					Do queuing aisle separation barriers have detectable elements?	307.2
<b>8.00</b>					<b>Service Counter</b>	
8.01					Is the height of the accessible order counter 34 inches maximum?	902.3
8.02					Is the width of the accessible order counter 36 inches minimum?	902.3
8.03					Is the height of the accessible pick-up counter 34 inches maximum?	902.3
8.04					Is the width accessible pick-up counter 36 inches minimum?	902.3
8.05					Is the credit card reader within reach range or on a cord long enough to reach to the lap of a customer who uses a wheelchair?	308
8.06					Is any signature pad writing surface 34 inches AFF maximum or on a cord long enough to reach to the lap of a customer who uses a wheelchair?	902.4
<b>9.00</b>					<b>Self Service Condiments and Drinks Counter</b>	
9.01					Is at least one of each type of container, utensil or condiment located within 48 inches maximum AFF or 46 inches maximum AFF for depths from 10 inches to 24 inches?	308
9.02					Is at least one of each type of drink dispenser located within 48 inches maximum AFF or 46 inches maximum AFF for depths from 10 inches to 24 inches?	308
9.03					Is the top of each self service counter or tray slide 34 inches maximum AFF?	902.3
9.04					Is the control of every dispenser operable with a closed fist or flail hand?	309.4

Privileged & Confidential  
 Attorney Work Product  
 Universal Designers & Consultants, Inc.  
 www.UDCconsultants.com

*This manual is for the use of Burger King Corporation employees, franchisees and their assigns. It is to be used as reference and as an aid to removing barriers to accessibility that may exist for our customers. It does not give legal opinions and is not to be relied upon for such. Burger King Corporation does not guarantee the accuracy or completeness of the document, and is not responsible for errors or omissions. Each franchisee is cautioned that accessibility codes can vary from state to state and town to town, and to seek professional advice for their specific situation to ensure compliance with the ADA and with all state and local codes.*

Line #	Yes	No	N/A	Comment	Question	2010 Standards
10.00					<b>Interior Accessible Seating and Tables</b>	
10.01					What is the total number of seating positions inside the restaurant?	
10.02					Is 5% of the seating positions in each area accessible?	226.1
10.03					Is there a 36 inches wide minimum accessible route serving every accessible seating location?	403
10.04					Is the height of the table top between 28 inches and 34 inches maximum at every accessible seating position?	902.3
10.05					Is 27 inches high by 30 inches wide by 17 inches deep knee clearance provided at every accessible seating position?	902.2
10.06					Is there an audible public alarm in the dining area?	702
10.07					Is there a visual fire alarm in the dining area?	702
10.10					<b>Exterior Accessible Seating and Tables</b>	
10.11					What is the total number of seating positions outside the restaurant?	
10.12					Is 5% of the seating positions in each area accessible?	226.1
10.13					Is there a 36 inches wide minimum accessible route serving every accessible seating location?	403
10.14					Is the height of the table top between 28 inches and 34 inches maximum at every accessible seating position?	902.3
10.15					Is 27 inches high by 30 inches wide by 17 inches deep knee clearance provided at every accessible seating position?	902.2

Privileged & Confidential  
 Attorney Work Product  
 Universal Designers & Consultants, Inc.  
 www.UDCconsultants.com

Store # \_\_\_\_\_  
 BK 2010 Standards ADA Checklist Version 1.1 – 2/21/2014

*This manual is for the use of Burger King Corporation employees, franchisees and their assigns. It is to be used as reference and as an aid to removing barriers to accessibility that may exist for our customers. It does not give legal opinions and is not to be relied upon for such. Burger King Corporation does not guarantee the accuracy or completeness of the document, and is not responsible for errors or omissions. Each franchisee is cautioned that accessibility codes can vary from state to state and town to town, and to seek professional advice for their specific situation to ensure compliance with the ADA and with all state and local codes.*

Line #	Yes	No	N/A	Comment	Question	2010 Standards
<b>11.00</b>					<b>Interior Accessible Routes and Elements</b>	
11.02					Is there a 36 inches wide accessible route connecting the accessible entry/entrances with all accessible spaces and elements within the facility including serving and condiment counters, dining areas, restrooms and playgrounds if available?	206.2.4 402
11.03					Are all required accessible routes stable, firm and slip resistant?	206.2.4 302.1
11.04					Are all required accessible routes free of abrupt changes in level greater than 1/4 inch in height?	206.2.4 403.4 303
11.05					Are all required accessible routes free of gaps greater than 1/2 inch wide?	206.2.4 403.2 302.3
11.06					Do all accessible routes have running slopes 5% or less? If no, complete section 5.	206.2.4 403.3
11.07					Do all accessible routes have cross slopes 2% or less?	206.2.4 403.3
<b>11.10</b>					<b>Interior Stairs</b>	
11.11					Are any stairs part of a means of egress? if no skip to next section.	210
11.12					Are all the risers 4 inches minimum to 7 inches high maximum?	504.2
11.13					Are all treads 11 inches minimum in depth?	504.2
11.14					Are all risers closed?	504.3
11.15					Are all nosings free of protrusions and are either flush, smooth or beveled?	504.5
11.16					Are handrails provided on both sides of the stairs?	505.1
11.17					Are all handrails located 34 inches to 38 inches AFF?	505.4
11.18					Do all handrails have a clearance of 1-1/2 inches minimum from the vertical surface?	505.5
11.19					Do all handrails have 12 inches minimum extensions at both the top and the bottom of the stairway?	505.1

*This manual is for the use of Burger King Corporation employees, franchisees and their assigns. It is to be used as reference and as an aid to removing barriers to accessibility that may exist for our customers. It does not give legal opinions and is not to be relied upon for such. Burger King Corporation does not guarantee the accuracy or completeness of the document, and is not responsible for errors or omissions. Each franchisee is cautioned that accessibility codes can vary from state to state and town to town, and to seek professional advice for their specific situation to ensure compliance with the ADA and with all state and local codes.*

Line #	Yes	No	N/A	Comment	Question	2010 Standards
<b>11.20</b>					<b>Protruding Objects</b>	
11.21					Are all pedestrian paths free of objects protruding more than 4 inches (12 inches if post mounted such as signage) horizontally, between 27 and 80 inches high?	307.2
11.22					Is there 80 inches high minimum head clearance along all pedestrian paths?	307.4
<b>11.30</b>					<b>Play Areas</b>	
11.31					Is there at least one accessible entrance and one accessible exit to the soft contained play structure (can be the same)?	1008.2.4.1
11.32					If there are 4 or more entrances to the soft contained play structure are there at least 2 entrances that are accessible?	206.2.17.2 1008.2.4.1
11.33					Is there a 60 inches minimum width accessible route from the entry of the play area to the each required accessible entry and exit of the soft contained play structure?	1008.2.4
11.34					Is there 80 inches high minimum head clearance along all accessible routes within the play area?	1008.2
11.35					Do all accessible routes have compliant level change and edge transition conditions?	403.4 405.2
11.36					Is a 60" diameter or T-tum space provided at each accessible entry to the soft contained play structure?	1008.2.4.1 304.3
11.37					Is a transfer platform provided at each accessible entry and exit of the soft contained play structure?	1008.2.2
11.38					Are all transfer platforms at least 14 inches deep and 24 inches wide and located between 11 inches and 18 inches AFF.	1008.3.1.1 1008.3.1.2
11.39					Is a 30 inches by 48 inches clear floor space centered (along the long side) of each transfer platform?	1008.3.1.3
11.40					Is at least one means of support (handrail or gripping surface) provided at every transfer platform?	1008.3.1.4 1008.3.2.3
11.41					Do all accessible routes have slopes of 1:16 (6.2%) maximum?	1008.2.5.1
11.42					Has the manufacturer provided proof of ADA compliance for all traditional non-contained composite structures and any free-standing play equipment?	240.2

This manual is for the use of Burger King Corporation employees, franchisees and their assigns. It is to be used as reference and as an aid to removing barriers to accessibility that may exist for our customers. It does not give legal opinions and is not to be relied upon for such. Burger King Corporation does not guarantee the accuracy or completeness of the document, and is not responsible for errors or omissions. Each franchisee is cautioned that accessibility codes can vary from state to state and town to town, and to seek professional advice for their specific situation to ensure compliance with the ADA and with all state and local codes.



Line #	Yes	No	N/A	Comment	Question	2010 Standards
<b>11.50</b>					<b>Games / Kiosk/Vending</b>	
11.51					Are all self service kiosks, vending machines or free standing game units on an accessible route with a 30 inches by 48 inches minimum clear floor space?	305.3
11.52					Are all controls and operating elements located within 48 inches maximum AFF or 46 inches maximum AFF for depths from 10 inches to 24 inches?	308
11.53					Are all controls or operating elements operable with a closed fist or flail hand with 5 lbs or less of force?	309.4
<b>12.00</b>					<b>Men's or Unisex Restroom</b>	
12.01					Is there a sign located out of the swing of any door at the latch side of the restroom door or on the face of inswinging doors that have closers but no hold open device?	703.4.2
12.02					Does the sign have tactile characters that are raised at least 1/32"?	703.2.1
12.03					Is the character height of the tactile characters between 5/8 inches and 2 inches?	703.2.5
12.04					Is the baseline of the lowest tactile character 48 inches minimum and the baseline of the highest tactile character 60 inches maximum?	703.4.1
12.05					Does the sign have braille?	703.3
12.06					Do there non-glare characters on the sign that visually contrast with a non-glare background?	703.5.1
12.07					Are floor surfaces in the restroom sloped less than 2% in all directions with no abrupt change in level greater than 1/4 inch high and no gaps greater than 1/2 inch wide.	206.2.4, 302.3 303, 403.2 403.3, 403.4
12.08					Is there a 60 inches diameter or a T-Turn turning space provided in the restroom? .	304.3
12.09					If a public alarm is audible in the restroom is there a visual alarm in the restroom?	702

This manual is for the use of Burger King Corporation employees, franchisees and their assigns. It is to be used as reference and as an aid to removing barriers to accessibility that may exist for our customers. It does not give legal opinions and is not to be relied upon for such. Burger King Corporation does not guarantee the accuracy or completeness of the document, and is not responsible for errors or omissions. Each franchisee is cautioned that accessibility codes can vary from state to state and town to town, and to seek professional advice for their specific situation to ensure compliance with the ADA and with all state and local codes.

Line #	Yes	No	N/A	Comment	Question	2010 Standards
12.10					<b>Men's Entry Door</b>	
12.11					Can all opening hardware be operated with a closed fist or flail hand?	404.2.7
12.12					Is door hardware located between 34 inches and 48 inches AFF?	404.2.7
12.13					Is the door opening force for all accessible interior and exterior doors no more than 5 lbf?	404.2.9
12.14					Is the door closing speed 5 seconds or more from 90 degrees to 12 degrees from the latch for all leaves of this doorway?	404.2.8.1
12.15					Is the clear width of the door 32 inches minimum?	404.2.3, 404.2.3
12.16					Does the threshold have an overall height of 1/2 inch maximum?	404.2.5
12.17					Does the threshold have abrupt portions that are 1/4 inch high maximum?	404.2.5
12.18					Does the threshold have a 1:2 maximum bevel for any portion that is more than 1/4 inch high?	404.2.5
12.19					Is there a 10 inches high smooth surface or kick plate located on the base of the push side of all leaves of the doorway?	404.2.10
12.20					Does the door have pull and push side maneuvering spaces that comply with figure 404.2.4.	404.2.4
12.21					Are the required maneuvering spaces on each side of the door sloped 2% or less in all directions?	404.2.4

Privileged & Confidential  
 Attorney Work Product  
 Universal Designers & Consultants, Inc.  
 www.udcconsultants.com

Store # \_\_\_\_\_  
 BK 2010 Standards ADA Checklist Version 1.1 – 2/21/2014

*This manual is for the use of Burger King Corporation employees, franchisees and their assigns. It is to be used as reference and as an aid to removing barriers to accessibility that may exist for our customers. It does not give legal opinions and is not to be relied upon for such. Burger King Corporation does not guarantee the accuracy or completeness of the document, and is not responsible for errors or omissions. Each franchisee is cautioned that accessibility codes can vary from state to state and town to town, and to seek professional advice for their specific situation to ensure compliance with the ADA and with all state and local codes.*

Line #	Yes	No	N/A	Comment	Question	2010 Standards
12.30					<b>Men's Lavatory</b>	
12.31					Is the top of the accessible lavatory 28 inches to 34 inches high?	213.3.4 606.2 606.3
12.32					Is a 27 inches high by 30 inches wide by 8 inches deep minimum knee clearance provided under the lavatory?	213.3.4 305.4 306 606.2
12.33					Is a 9 inches high by 30 inches wide by 17 inches deep minimum toe clearance provided under the lavatory?	213.3.4 305.4 306 606.2
12.34					Are all the accessible lavatory pipes insulated or otherwise protected from contact?	213.3.4 606.5
12.35					Is the faucet hardware at the accessible lavatory automatic or operable with a closed fist or flail hand?	213.3.4 606.4
12.36					Is a mirror provided?	213.3.4 603.3
12.37					Is the bottom reflecting edge of the mirror located 40 inches high maximum?	213.3.4 603.3

*This manual is for the use of Burger King Corporation employees, franchisees and their assigns. It is to be used as reference and as an aid to removing barriers to accessibility that may exist for our customers. It does not give legal opinions and is not to be relied upon for such. Burger King Corporation does not guarantee the accuracy or completeness of the document, and is not responsible for errors or omissions. Each franchisee is cautioned that accessibility codes can vary from state to state and town to town, and to seek professional advice for their specific situation to ensure compliance with the ADA and with all state and local codes.*

Line #	Yes	No	N/A	Comment	Question	2010 Standards
<b>12.40</b>					<b>Dispensers / Accessories</b>	
12.41					If there is a customer use light switch, is it 48 inches AFF maximum in an accessible location?	205.1 308 309.3
12.42					Is at least one of each type of dispenser in the restroom on an accessible route with a 30 inches by 48 inches minimum clear floor space?	305.3
12.43					Is at least one of each type of dispenser mounted with controls 48 inches maximum AFF?	308
12.44					Is the diaper changing station on an accessible route with an accessible clear floor space?	305 902.1 902.2
12.45					Is the diaper changing station pull down handle and all other operable controls located 48 inches high maximum?	305
12.46					Is the diaper changing station surface (when open) 28 inches to 34 inches high maximum?	902.1 902.3
12.47					Does the diaper changing station surface (when open) provide 27 inches of knee clearance?	306 902.1 902.2
12.48					Are accessible dispensers operable without pinching, grasping or twisting of the wrist and require 5 lbf or less to operate?	205 309.4

Privileged & Confidential  
 Attorney Work Product  
 Universal Designers & Consultants, Inc.  
 www.UDCconsultants.com

Store # \_\_\_\_\_  
 BK 2010 Standards ADA Checklist Version 1.1 – 2/21/2014

*This manual is for the use of Burger King Corporation employees, franchisees and their assigns. It is to be used as reference and as an aid to removing barriers to accessibility that may exist for our customers. It does not give legal opinions and is not to be relied upon for such. Burger King Corporation does not guarantee the accuracy or completeness of the document, and is not responsible for errors or omissions. Each franchisee is cautioned that accessibility codes can vary from state to state and town to town, and to seek professional advice for their specific situation to ensure compliance with the ADA and with all state and local codes.*



Line #	Yes	No	N/A	Comment	Question	2010 Standards
<b>12.50</b>					<b>Men's Toilet</b>	
12.51					Is this a unisex or single user restroom ?	
12.52					Is the accessible toilet seat 17 inches to 19 inches AFF?	604.4
12.53					Is the accessible toilet centered 16 inches to 18 inches from sidewall?	604.2
12.54					Is the toilet flush control automatic or located on the open side of the toilet?	604.6
12.55					Is a horizontal sidewall grab bar provided that is 1-1/4 to 1-1/2 inches in diameter, 42 inches long minimum, extending 54 inches minimum from the rear wall, 33 inches to 36 inches above the floor to the top of the gripping surface and with no obstructions within 12 inches above or 1-1/2 inches below the bar?	604.5.1 609
12.56					Is a horizontal rear wall grab bar provided that is 1-1/4 to 1-1/25 inches in diameter, 36 inches long minimum, extending 12 inches minimum from the toilet centerline towards the rear side wall, centered 33 inches to 36 inches above the floor to the top of the gripping surface and with no obstructions within 12 inches above or 1-1/2 inches below the bar?	604.5.2 609
12.57					Is the centerline of the toilet paper dispenser located 7 inches to 9 inches from the front of the water closet?	604.7
12.58					Is the toilet paper dispenser located at least 1-1/2 inches below the side wall grab bar or at least 12 inches above the grab bar?	609.3
12.59					Is the toilet paper dispenser opening located 15 inches minimum to 48 inches maximum above the floor?	604.7 609.3
12.60					Is the accessible water closet in a compartment? <b>If yes, skip to line 12.63</b>	
12.61					Is at least 60 inches minimum clearance measured perpendicular from the side wall provided?	604.3
12.62					Is 56 inches minimum clearance measured perpendicular from the rear wall provided?	604.3
12.63					Is the accessible toilet compartment 60 inches minimum wide?	604.8.1.1
12.64					If a wall hung water closet is provided in the compartment is the depth of the compartment 56 inches minimum?	604.8.1.1
12.65					If a floor mounted water closet is provided in the compartment is the depth of the compartment 59 inches minimum?	604.8.1.1
12.66					Is 9 inches high and 6" deep minimum toe clearance provided at the front of the compartment and one other side?	604.8.1.4

This manual is for the use of Burger King Corporation employees, franchisees and their assigns. It is to be used as reference and as an aid to removing barriers to accessibility that may exist for our customers. It does not give legal opinions and is not to be relied upon for such. Burger King Corporation does not guarantee the accuracy or completeness of the document, and is not responsible for errors or omissions. Each franchisee is cautioned that accessibility codes can vary from state to state and town to town, and to seek professional advice for their specific situation to ensure compliance with the ADA and with all state and local codes.

Line #	Yes	No	N/A	Comment	Question	2010 Standards
12.67					Is the toilet compartment door self-closing, provide a clear opening width of 32 inches minimum, and located within 4 inches of the compartment corner diagonally opposite the toilet?	604.8.1.2
12.68					Is all accessible toilet compartment door hardware centered between 34 inches and 48 inches AFF?	404.2.7
12.69					If the accessible compartment door is out-swinging, are the exterior maneuvering spaces compliant with figure 404.2.4.	604.8.1.2 404.2.4
12.70					Is all accessible compartment door hardware operable with a closed fist or flail hand?	604.8.1.2 404.2.7
12.71					Is the inside and outside of the accessible compartment door equipped with a loop or U-shaped handle?	604.8.1.2
12.72					Is at least one of each hook and dispenser in the accessible compartment at 48 inches AFF maximum?	213.3.7 603.4 604.8.3 308

This manual is for the use of Burger King Corporation employees, franchisees and their assigns. It is to be used as reference and as an aid to removing barriers to accessibility that may exist for our customers. It does not give legal opinions and is not to be relied upon for such. Burger King Corporation does not guarantee the accuracy or completeness of the document, and is not responsible for errors or omissions. Each franchisee is cautioned that accessibility codes can vary from state to state and town to town, and to seek professional advice for their specific situation to ensure compliance with the ADA and with all state and local codes.

Privileged & Confidential  
 Attorney Work Product  
 Universal Designers & Consultants, Inc.  
 www.UDCconsultants.com

Store # \_\_\_\_\_  
 BK 2010 Standards ADA Checklist Version 1.1 – 2/21/2014

Line #	Yes	No	N/A	Comment	Question	2010 Standards
<b>12.80</b>					<b>Men's Ambulatory Compartment</b>	
12.81					If there are 6 or more toilet compartments and urinals combined, is an ambulatory compartment provided?	213.3.1
12.82					If an ambulatory compartment is provided is it 35 inches to 37 inches wide and at least 60 inches long?	604.8.2.1
12.83					Does the door provide at least 32 inches of clear opening width?	604.8.2.2
12.84					Can all opening hardware be operated with a closed fist?	404.2.7
12.85					Is all door hardware centered between 34 inches and 48 inches AFF?	404.2.7
12.86					Is the compartment door maneuvering space compliant with figure 404.2.4.	604.8.1.2 404.2.4
12.87					Is toilet centered 17-19 inches from side wall?	604.2
12.88					Are there two horizontal sidewall grab bars provided in the ambulatory compartment that are 1-1/4 to 1-1/2 inches in diameter, 42 inches long minimum, extending 54 inches minimum from the rear wall?	604.8.2.3
<b>12.90</b>					<b>Urinal</b>	
12.91					Are there less than 2 urinals? If yes, skip to line 13.00.	213.3.3
12.92					Is the lip of one urinal 17 inches high maximum?	605.2
12.93					Is there a 30 inches wide minimum (36 inches wide minimum if in an alcove over 24 inches deep) or compliant clear floor space at that urinal?	605.3
12.94					Does the lip of the urinal extend at least 13-1/2 inches from the rear wall?	605.2
12.95					Is the urinal's flush control automatic or 48 inches high maximum and operable with no more than 5 lbf of pressure?	605.4

*This manual is for the use of Burger King Corporation employees, franchisees and their assigns. It is to be used as reference and as an aid to removing barriers to accessibility that may exist for our customers. It does not give legal opinions and is not to be relied upon for such. Burger King Corporation does not guarantee the accuracy or completeness of the document, and is not responsible for errors or omissions. Each franchisee is cautioned that accessibility codes can vary from state to state and town to town, and to seek professional advice for their specific situation to ensure compliance with the ADA and with all state and local codes.*

Line #	Yes	No	N/A	Comment	Question	2010 Standards
<b>13.00</b>					<b>Women's or 2nd Single User Restroom</b>	
13.01					Is there a sign located out of the swing of any door at the latch side of the restroom door or on the face of inswinging doors that have closers but no hold open device?	703.4.2
13.02					Does the sign have tactile characters that are raised at least 1/32"?	703.2.1
13.03					Is the character height of the tactile characters between 5/8 inches and 2 inches?	703.2.5
13.04					Is the baseline of the lowest tactile character 48 inches minimum and the baseline of the highest tactile character 60 inches maximum?	703.4.1
13.05					Does the sign have braille?	703.3
13.06					Do there non-glare characters on the sign that visually contrast with a non-glare background?	703.5.1
13.07					Are floor surfaces in the restroom sloped less than 2% in all directions with no abrupt change in level greater than 1/4 inch high and no gaps greater than 1/2 inch wide.	206.2.4, 302.3 303, 403.2 403.3, 403.4
13.08					Is there a 60 inches diameter or a T-Turn turning space provided in the restroom?	304.3
13.09					If a public alarm is audible in the restroom is there a visual alarm in the restroom?	702

*This manual is for the use of Burger King Corporation employees, franchisees and their assigns. It is to be used as reference and as an aid to removing barriers to accessibility that may exist for our customers. It does not give legal opinions and is not to be relied upon for such. Burger King Corporation does not guarantee the accuracy or completeness of the document, and is not responsible for errors or omissions. Each franchisee is cautioned that accessibility codes can vary from state to state and town to town, and to seek professional advice for their specific situation to ensure compliance with the ADA and with all state and local codes.*



Line #	Yes	No	N/A	Comment	Question	2010 Standards
<b>13.10</b>					<b>Women's Entry Door</b>	
13.11					Can all opening hardware be operated with a closed fist or flail hand?	404.2.7
13.12					Is door hardware located between 34 inches and 48 inches AFF?	404.2.7
13.13					Is the door opening force for all accessible interior and exterior doors no more than 5 lb?	404.2.9
13.14					Is the door closing speed 5 seconds or more from 90 degrees to 12 degrees from the latch for all leaves of this doorway?	404.2.8.1
13.15					Is the clear width of the door 32 inches minimum?	404.2.3, 404.2.3
13.16					Does the threshold have an overall height of 1/2 inch maximum?	404.2.5
13.17					Does the threshold have abrupt portions that are 1/4 inch high maximum?	404.2.5
13.18					Does the threshold have a 1:2 maximum bevel for any portion that is more than 1/4 inch high?	404.2.5
13.19					Is there a 10 inches high smooth surface or kick plate located on the base of the push side of all leaves of the doorway?	404.2.10
13.20					Does the door have pull and push side maneuvering spaces that comply with figure 404.2.4.	404.2.4
13.21					Are the required maneuvering spaces on each side of the door sloped 2% or less in all directions?	404.2.4

This manual is for the use of Burger King Corporation employees, franchisees and their assigns. It is to be used as reference and as an aid to removing barriers to accessibility that may exist for our customers. It does not give legal opinions and is not to be relied upon for such. Burger King Corporation does not guarantee the accuracy or completeness of the document, and is not responsible for errors or omissions. Each franchisee is cautioned that accessibility codes can vary from state to state and town to town, and to seek professional advice for their specific situation to ensure compliance with the ADA and with all state and local codes.

Privileged & Confidential  
 Attorney Work Product  
 Universal Designers & Consultants, Inc.  
 www.UDConsultants.com

Store # \_\_\_\_\_  
 BK 2010 Standards ADA Checklist Version 1.1 – 2/21/2014

Line #	Yes	No	N/A	Comment	Question	2010 Standards
13.30					<b>Women's Lavatory</b>	
13.31					Is the top of the accessible lavatory 28 inches to 34 inches high?	213.3.4 606.2 606.3
13.32					Is a 27 inches high by 30 inches wide by 8 inches deep minimum knee clearance provided under the lavatory?	213.3.4 305.4 306 606.2
13.33					Is a 9 inches high by 30 inches wide by 17 inches deep minimum toe clearance provided under the lavatory?	213.3.4 305.4 306 606.2
13.34					Are all the accessible lavatory pipes insulated or otherwise protected from contact?	213.3.4 606.5
13.35					Is the faucet hardware at the accessible lavatory automatic or operable with a closed fist or flail hand?	213.3.4 606.4
13.36					Is a mirror provided?	213.3.4 603.3
13.37					Is the bottom reflecting edge of the mirror located 40 inches high maximum?	213.3.4 603.3

Privileged & Confidential  
 Attorney Work Product  
 Universal Designers & Consultants, Inc.  
 www.udcconsultants.com

Store # \_\_\_\_\_  
 BK 2010 Standards ADA Checklist Version 1.1 – 2/21/2014

*This manual is for the use of Burger King Corporation employees, franchisees and their assigns. It is to be used as reference and as an aid to removing barriers to accessibility that may exist for our customers. It does not give legal opinions and is not to be relied upon for such. Burger King Corporation does not guarantee the accuracy or completeness of the document, and is not responsible for errors or omissions. Each franchisee is cautioned that accessibility codes can vary from state to state and town to town, and to seek professional advice for their specific situation to ensure compliance with the ADA and with all state and local codes.*

Line #	Yes	No	N/A	Comment	Question	2010 Standards
<b>13.40</b>					<b>Dispensers / Accessories</b>	
13.41					If there is a customer use light switch, is it 48 inches AFF maximum in an accessible location?	205.1 308 309.3
13.42					Is at least one of each type of dispenser in the restroom on an accessible route with a 30 inches by 48 inches minimum clear floor space?	305.3
13.43					Is at least one of each type of dispenser mounted with controls 48 inches maximum AFF?	308
13.44					Is the diaper changing station on an accessible route with an accessible clear floor space?	305 902.1 902.2
13.45					Is the diaper changing station pull down handle and all other operable controls located 48 inches high maximum?	305
13.46					Is the diaper changing station surface (when open) 28 inches to 34 inches high maximum?	902.1 902.3
13.47					Does the diaper changing station surface (when open) provide 27 inches of knee clearance?	306 902.1 902.2
13.48					Are accessible dispensers operable without pinching, grasping or twisting of the wrist and require 5 lbf or less to operate?	205 309.4

Privileged & Confidential  
 Attorney Work Product  
 Universal Designers & Consultants, Inc.  
 www.udcconsultants.com

Store # \_\_\_\_\_  
 BK 2010 Standards ADA Checklist Version 1.1 – 2/21/2014

*This manual is for the use of Burger King Corporation employees, franchisees and their assigns. It is to be used as reference and as an aid to removing barriers to accessibility that may exist for our customers. It does not give legal opinions and is not to be relied upon for such. Burger King Corporation does not guarantee the accuracy or completeness of the document, and is not responsible for errors or omissions. Each franchisee is cautioned that accessibility codes can vary from state to state and town to town, and to seek professional advice for their specific situation to ensure compliance with the ADA and with all state and local codes.*

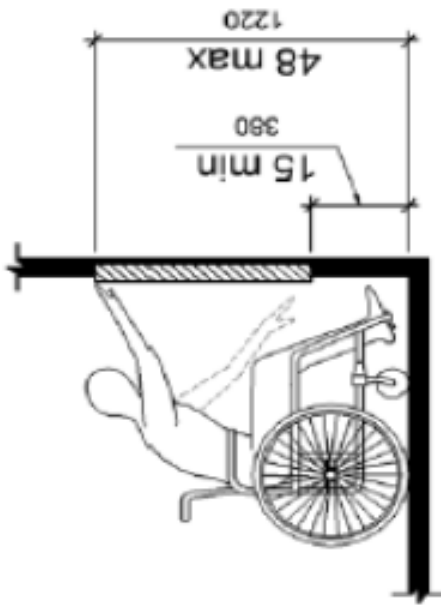
Line #	Yes	No	N/A	Comment	Question	2010 Standards
13.50					<b>Women's Toilet</b>	
13.51					Is this a unisex or single user restroom ?	
13.52					Is the accessible toilet seat 17 inches to 19 inches AFF?	604.4
13.53					Is the accessible toilet centered 16 inches to 18 inches from sidewall?	604.2
13.54					Is the toilet flush control automatic or located on the open side of the toilet?	604.6
13.55					Is a horizontal sidewall grab bar provided that is 1-1/4 to 1-1/2 inches in diameter, 42 inches long minimum, extending 54 inches minimum from the rear wall, 33 inches to 36 inches above the floor to the top of the gripping surface and with no obstructions within 12 inches above or 1-1/2 inches below the bar?	604.5.1 609
13.56					Is a horizontal rear wall grab bar provided that is 1-1/4 to 1-1/25 inches in diameter, 36 inches long minimum, extending 12 inches minimum from the toilet centerline towards the rear side wall, centered 33 inches to 36 inches above the floor to the top of the gripping surface and with no obstructions within 12 inches above or 1-1/2 inches below the bar?	604.5.2 609
13.57					Is the centerline of the toilet paper dispenser located 7 inches to 9 inches from the front of the water closet?	604.7
13.58					Is the toilet paper dispenser located at least 1-1/2 inches below the side wall grab bar or at least 12 inches above the grab bar?	609.3
13.59					Is the toilet paper dispenser opening located 15 inches minimum to 48 inches maximum above the floor?	604.7 609.3
13.60					Is the accessible water closet in a compartment? <b>If yes, skip to line 13.63</b>	
13.61					Is at least 60 inches minimum clearance measured perpendicular from the side wall provided?	604.3
13.62					Is 56 inches minimum clearance measured perpendicular from the rear wall provided?	604.3
13.63					Is the accessible toilet compartment 60 inches minimum wide?	604.8.1.1
13.64					If a wall hung water closet is provided in the compartment is the depth of the compartment 56 inches minimum?	604.8.1.1
13.65					If a floor mounted water closet is provided in the compartment is the depth of the compartment 59 inches minimum?	604.8.1.1
13.66					Is 9 inches high and 6" deep minimum toe clearance provided at the front of the compartment and one other side?	604.8.1.4

*This manual is for the use of Burger King Corporation employees, franchisees and their assigns. It is to be used as reference and as an aid to removing barriers to accessibility that may exist for our customers. It does not give legal opinions and is not to be relied upon for such. Burger King Corporation does not guarantee the accuracy or completeness of the document, and is not responsible for errors or omissions. Each franchisee is cautioned that accessibility codes can vary from state to state and town to town, and to seek professional advice for their specific situation to ensure compliance with the ADA and with all state and local codes.*

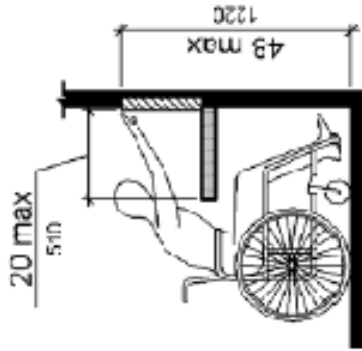


Line #	Yes	No	N/A	Comment	Question	2010 Standards
13.67					Is the toilet compartment door self-closing, provide a clear opening width of 32 inches minimum, and located within 4 inches of the compartment corner diagonally opposite the toilet?	604.8.1.2
13.68					Is all accessible toilet compartment door hardware centered between 34 inches and 48 inches AFF?	404.2.7
13.69					If the accessible compartment door is out-swinging, are the exterior maneuvering spaces compliant with figure 404.2.4.	604.8.1.2 404.2.4
13.70					Is all accessible compartment door hardware operable with a closed fist or flail hand?	604.8.1.2 404.2.7
13.71					Is the inside and outside of the accessible compartment door equipped with a loop or U-shaped handle?	604.8.1.2
13.72					Is at least one of each hook and dispenser in the accessible compartment at 48 inches AFF maximum?	213.3.7 603.4 604.8.3 308
<b>13.80</b>					<b>Women's Ambulatory Compartment</b>	
13.81					If there are 6 or more toilet compartments, is an ambulatory compartment provided?	213.3.1
13.82					If an ambulatory compartment is provided is it 35 inches to 37 inches wide and at least 60 inches long?	604.8.2.1
13.83					Does the door provide at least 32 inches of clear opening width?	604.8.2.2
13.84					Can all opening hardware be operated with a closed fist?	404.2.7
13.85					Is all door hardware centered between 34 inches and 48 inches AFF?	404.2.7
13.86					Is the compartment door maneuvering space compliant with figure 404.2.4.	604.8.1.2 404.2.4
13.87					Is toilet centered 17-19 inches from side wall?	604.2
13.88					Are there two horizontal sidewall grab bars provided in the ambulatory compartment that are 1-1/4 to 1-1/2 inches in diameter, 42 inches long minimum, extending 54 inches minimum from the rear wall?	604.8.2.3

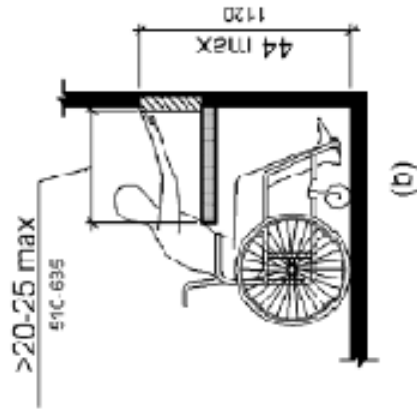
*This manual is for the use of Burger King Corporation employees, franchisees and their assigns. It is to be used as reference and as an aid to removing barriers to accessibility that may exist for our customers. It does not give legal opinions and is not to be relied upon for such. Burger King Corporation does not guarantee the accuracy or completeness of the document, and is not responsible for errors or omissions. Each franchisee is cautioned that accessibility codes can vary from state to state and town to town, and to seek professional advice for their specific situation to ensure compliance with the ADA and with all state and local codes.*



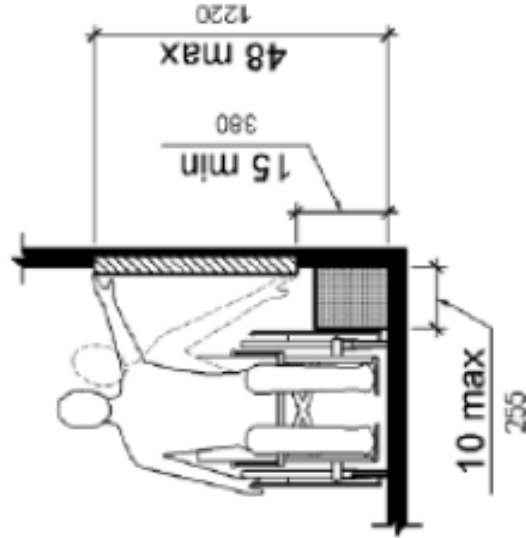
**Figure 308.2.1**  
**Unobstructed Forward Reach**



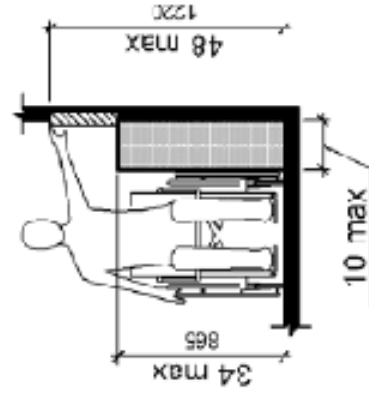
**(a)**  
**Figure 308.2.2**  
**Obstructed High Forward Reach**



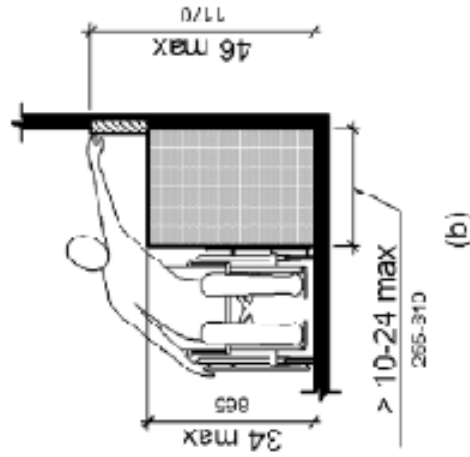
**(b)**



**Figure 308.3.1**  
**Unobstructed Side Reach**



**(a)**  
**Figure 308.3.2**  
**Obstructed High Side Reach**

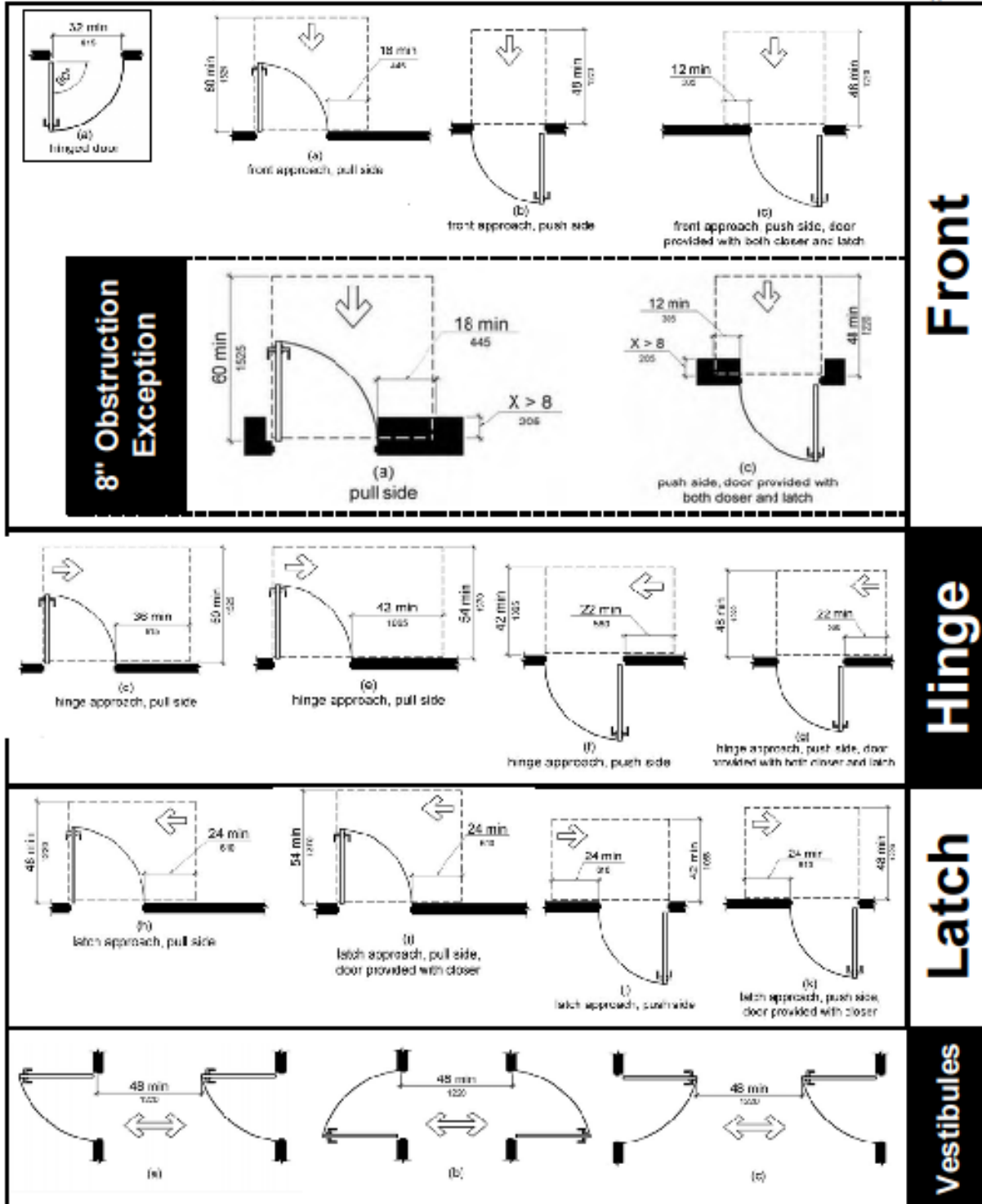


**(b)**

# Door Maneuvering Clearances

Figure 404.2.4

Version 5.0 (March 18, 2010)



This manual is for the use of Burger King Corporation employees, franchisees and their assigns. It is to be used as reference and as an aid to removing barriers to accessibility that may exist for our customers. It does not give legal opinions and is not to be relied upon for such. Burger King Corporation does not guarantee the accuracy or completeness of the document, and is not responsible for errors or omissions. Each franchisee is cautioned that accessibility codes can vary from state to state and town to town, and to seek professional advice for their specific situation to ensure compliance with the ADA and with all state and local codes.

**ADA and State/Local Disabilities Laws  
CERTIFICATE OF INSPECTION**

My name is \_\_\_\_\_ I am employed by the firm of \_\_\_\_\_ whose address is \_\_\_\_\_ and whose telephone number is ( ) \_\_\_\_\_.

I am making the following representations at the request of \_\_\_\_\_ I understand that these representations are being made for the benefit of Burger King Corporation ("BKC") and that BKC will be relying on my representations.

I hereby certify to BKC as follows:

1. I am a licensed architect in the State of \_\_\_\_\_. I am familiar with the requirements of Title III of the Americans With Disabilities Act of 1990 ("ADA") and the requirements of the 2010 ADA Standards for Accessible Design (the "2010 ADA Standards"); I am also familiar with the state and local building codes including any disabilities related statutes or codes (collectively the "Codes") in the applicable jurisdiction where the restaurant is located.
2. On \_\_\_\_\_, 20\_\_, I inspected the newly constructed or altered building and other improvements (the "Remodel Project") known as Burger King Restaurant # \_\_\_\_\_ with a street address of \_\_\_\_\_ in the City of \_\_\_\_\_, State of \_\_\_\_\_ (the "Restaurant"). As one of the tools for my inspection, I used and completed the Burger King® 2010 ADA Standards Checklist to inspect the Restaurant.
3. My inspection was for compliance of the building, parking areas, paths of travel (including paths of travel to public right of way), and other improvements (collectively the "Restaurant Improvements") with Title III of the ADA, and the requirements of the 2010 ADA Standards, and the Codes regardless if they were altered as part of the Remodel Project. I understand that for purposes of this inspection, I am inspecting the Restaurant Improvements as if it was all newly constructed as of the date the building permits for the Remodel Project were issued.
4. My inspection disclosed that the Restaurant is in compliance with Title III of the ADA, and the requirements of the 2010 ADA Standards and the Codes.

(Seal)

Signature: \_\_\_\_\_

Date: \_\_\_\_\_, 20\_\_

License # or Seal:

*This manual is for the use of Burger King Corporation employees, franchisees and their assigns. It is to be used as reference and as an aid to removing barriers to accessibility that may exist for our customers. It does not give legal opinions and is not to be relied upon for such. Burger King Corporation does not guarantee the accuracy or completeness of the document, and is not responsible for errors or omissions. Each franchisee is cautioned that accessibility codes can vary from state to state and town to town, and to seek professional advice for their specific situation to ensure compliance with the ADA and with all state and local codes.*