



# Cardinal

BY FOREST RIVER







**STUNNING EXTERIOR GRAPHICS AND SUPERIOR TOWABILITY**

Cardinals sleek lines and graphics will make you the envy of the campground and the road. If you are towing with a shortbed truck, Cardinals re-designed front cap allows for much improved turning radius to keep you out of those tight situations.







**UNDER CUSHION STORAGE**

### **BEAUTIFULLY CRAFTED INTERIORS**

The Cardinal Fifth wheel from Forest River features the perfect blend of fresh designer interiors, beautiful hand-crafted cabinetry and well thought-out, functional floorplans. Flush floor super slide-out rooms combine with large panoramic windows to create a more open feel of interior spaciousness. You'll appreciate the attention to detail found in every Cardinal, from the decorator window valances to the oak edged countertops and decorative oak trim accents found throughout the coach. And the optional La-Z-Boy™ recliners make for true comfort on the road.



### **DESIGNED FOR MAXIMUM COMFORT AND LIVABILITY**

When designing the Cardinal Fifth wheel, our customers provided valuable input which played a big role in the development of features like this innovative entertainment center/work desk/fireplace slide-out. Perfect for working on the computer or catching up with paper work. The entertainment center features a 32" Flatscreen color television, and cabinet for a VCR or DVD player, as well as an optional fireplace that can really warm up the living room on a chilly night. The rocker/recliners are great for reading or watching your favorite movies.



**CARDINAL**





#### **DESIGNED WITH DETAILS IN MIND**

The attention to detail is evident in the matching marble finish in the shower and sink. The sink features a single lever faucet and an extra deep sink basin right beside the shower for convenience.

#### **RESIDENTIAL BATHROOM AMENITIES**

(Left) The foot-flush porcelain toilets with sprayer are more sanitary than the plastic substitutes and add to the residential design in Cardinal bathrooms. There is also heat and air conditioning in the bathrooms.





30TS



**34 QRL KITCHEN**

(Shown above) Model 34 QRL kitchen with wrap around solid surface countertops, pull out sprayer faucet, convection microwave, 9 cubic foot refrigerator and tons of storage. This is gorgeous!

**DOUBLE REFRIGERATOR FLOORPLANS**

Cardinal gives you five floorplans (35RLT, 35SB, 36SB, 36TS & 37RL) that come with two 9 cubic feet refrigerators to give you an abundance of food storage for those long stays.

**CARDINAL**





### A RELAXING AND INVITING RETREAT

Another great Cardinal standard feature is our spacious bedroom slide-out configuration that allows for a beveled mirror wardrobe across the full width of the coach with 60" x 80" queen beds, or 72" x 80" king size beds (depending on model) as well as a convenient vanity area with an abundance of overhead and base cabinetry storage along the sidewall, including an area for a television. The dentil molding, located on the oak facia, can be found throughout the floorplan adding refined luxury to the bedroom. The bedroom and bathroom floors are on the same level – no stepping up or down in the middle of the night. (Inset) Deep underbed storage and a safe for your valuables, just another way Cardinal provides you with innovative storage ideas.



### CUSTOM PAINT PACKAGE

The optional custom paint package will make you the envy of your neighborhood.



### THE COMFORTS OF HOME

Cardinal's residential bedroom vanity with custom shadow box over the window.

### BEDROOM AMENITIES

Cardinal's bedroom hosts plenty of storage for anything you need on your trip. Red cedar lined and lighted wardrobe, Washer/Dryer prepped closet that's accessible, and optional 19" LCD Flatscreen TV that adjusts for your viewing pleasure.



### CARDINALS STORAGE SOLUTIONS

Cardinals Hide-A-Bed Sofa with air mattress can be inflated to fit your comfort level. No more uncomfortable foam mats. Look at the plentiful storage under the sofa as well. Our Hide-A-Bed sofa extends out more than a foot less into the living area than traditional Hide-A-Beds



CARDINAL





**FINISHING TOUCHES**

Little things like wood frame around the entry door compliments the interior look.



**CREATIVE STORAGE COMPARTMENTS**

The optional oak step provides additional storage space.



**A TOUCH OF HOME**

The single level kitchen faucet comes complete with a spray handle that simply slides out for simple tasks like washing and preparing food. Just another detail suggested by customers for a more enjoyable RV-ing experience.



**LINEN CLOSET**

Cardinal's linen closet in the side bath models is second to none!



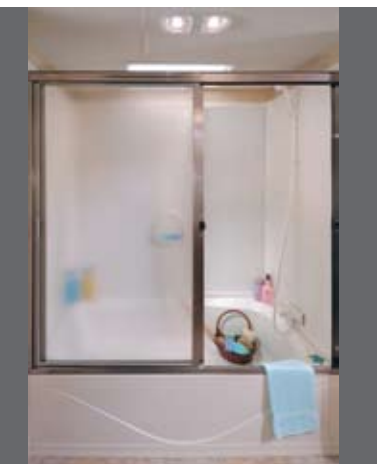
**KITCHEN STORAGE**

Storage baskets you can take to the kitchen counter! Convection Microwave, 22" oven, and vented range hood. (Convection Microwave optional in TT & LE Models)



**UPGRADES GALORE**

Cardinal slide out fascia and wide crown molding is truly an upscale designer look.



**RESIDENTIAL BATH**

54" residential style bath-tub is available in several models.



**INNOVATIVE STORAGE**

The free standing dinette w/ four chair option will provide you with comfort, storage and you will have plenty room with the easy to use table extension.



**GREAT FOR HAULING TOYS**

Optional factory installed boat hitch will tow up to 350 lb. hitch weight and 3500 lb. towing capacity. This hitch will not void your warranty.





**WHERE THE RUBBER MEETS THE ROAD**

(Above) If you take the time to look closely, you'll find aluminum alloy wheels on most Cardinal models. (Above Middle) Cardinal underbelly enclosures are made of corrugated galvanized panels. These panels are in 4' sections for easier access to tanks. They prevent sagging, keeping your Cardinal in mint condition.

**PLUG-IN THE POWER**

65 amp service allows you to use more electrical items without blowing circuit breakers.



**PANORAMIC WINDOW OPTION**

Cardinal's panoramic window option allows you to bring the outside in, and enjoy a beautiful view.

**TRAIL-AIR ROTO-FLEX HITCH**

Standard hitch helps cushion the ride, less stress on the tow vehicle, and less stress on the coach.

**TRAIL-AIR EQUA-FLEX**

**SUSPENSION**  
Standard on all Cardinals, you will notice the improved and superior ride.



**EXTERIOR STORAGE**

Cardinals heavy duty diamond plate flooring and tie downs will keep your cargo in place during your travels. If you need to separate your valuable cargo pack all these storage bins and more.

**UNIVERSAL DOCKING STATION**

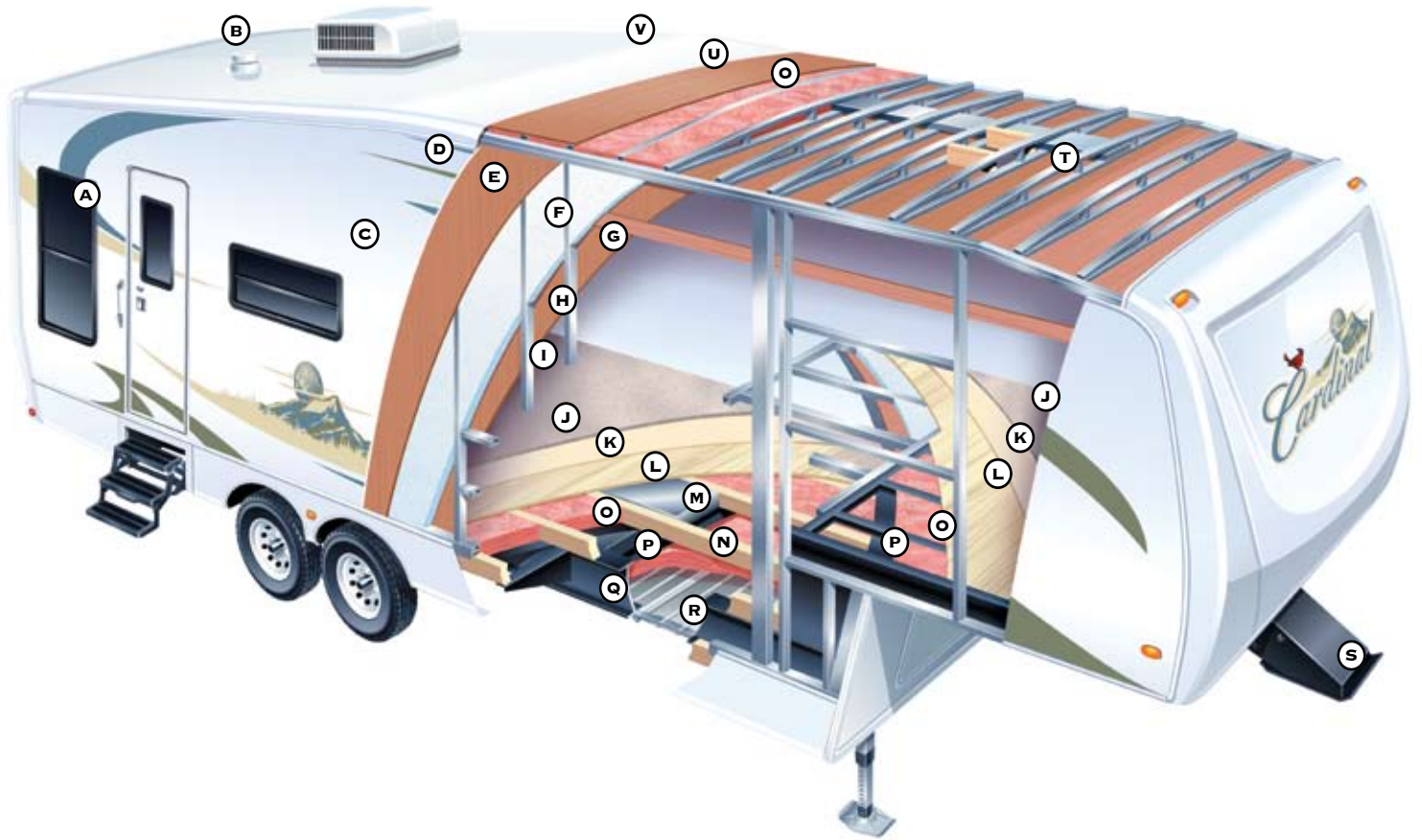
Convenient hook-ups for satellite, phone, cable, black tank flush, and waste water gate valves. The Standard water filter is easily accessible for quick changes.

**REAR ELECTRIC**

**STABILIZER JACKS**  
Standard on all Cardinals. Makes set-up a breeze.



# CARDINAL CONSTRUCTION



## BUILT TO STAND THE TEST OF TIME

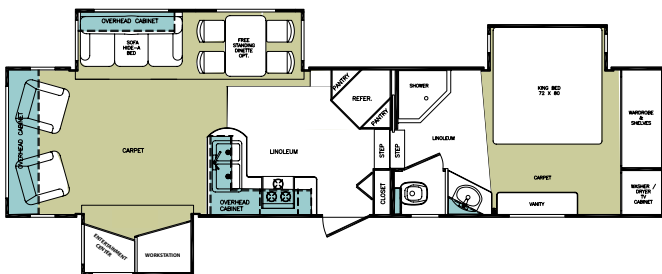
It is both quality construction materials and innovative engineering techniques that have set the Cardinal apart from the competition. Cardinal's ultra-strong steel I-beam frame serves as the foundation for our floor, sidewall and roof systems which are the strongest, most durable in the industry. By taking the time to integrate each structural component, we are drastically improving the Cardinal's ability to take the wear and tear of road travel. This means that every Cardinal is built to stand the test of time – from the inside out!

- |   |  |
|---|--|
| <p><b>A DARK TINTED WINDOWS</b></p> <p><b>B ATTIC VENT</b></p> <p><b>C DELUXE GRAPHICS PACKAGE</b></p> <p><b>D GELCOAT FIBERGLASS EXTERIOR</b><br/>(INCLUDING ALL SIDEWALLS, DOORS,<br/>COMPARTMENT DOORS AND END WALLS<br/>OF SLIDE-OUTS)</p> <p><b>E LUAN</b></p> <p><b>F BLOCK FOAM INSULATION</b></p> <p><b>G DECORATIVE WALL BOARD</b></p> <p><b>H ELECTRO-GALVANIZED SHEET (EGS)</b><br/>METAL BACKING STRIP</p> <p><b>I WELDED TUBULAR ALUMINUM</b><br/>STUDS (2" WALL)</p> <p><b>J PLUSH CARPET</b></p> | <p><b>K SOFT FOAM PADDING</b></p> <p><b>L TONGUE AND GROOVE PLYWOOD</b><br/>FLOOR DECKING</p> <p><b>M LARGE CAPACITY HEAT DUCT</b></p> <p><b>N 2" X 3" TRUSSES</b></p> <p><b>O FIBERGLASS INSULATION (R-14)</b></p> <p><b>P BLACK POLYMAX MOISTURE BARRIER</b></p> <p><b>Q 10-12" STEEL I-BEAM (DEPENDING ON MODEL)</b></p> <p><b>R GALVANIZED UNDERBELLY</b></p> <p><b>S EXTENDED HITCHPIN</b></p> <p><b>T ALUMINUM ROOF TRUSSES (OPTIONAL)</b></p> <p><b>U 3/8" DECKING</b></p> <p><b>V ONE-PIECE EPDM RUBBER ROOF</b><br/>(12 YR. WARRANTY)</p> |
|---|--|

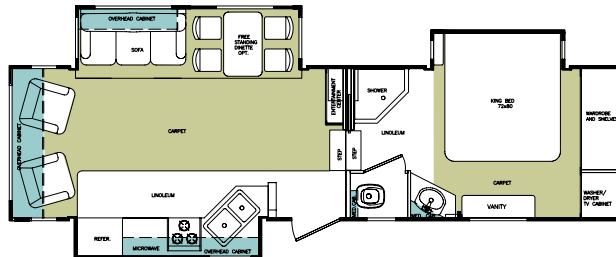


# CARDINAL FLOORPLANS

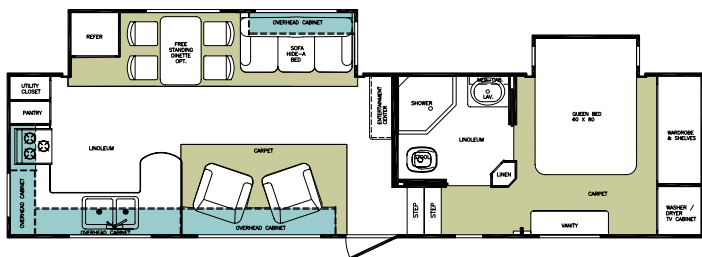
**30MK**



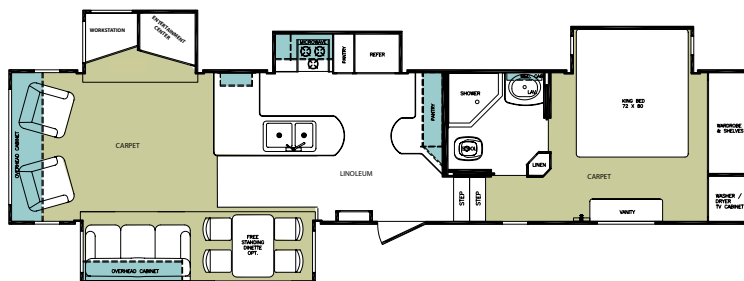
**30TS**



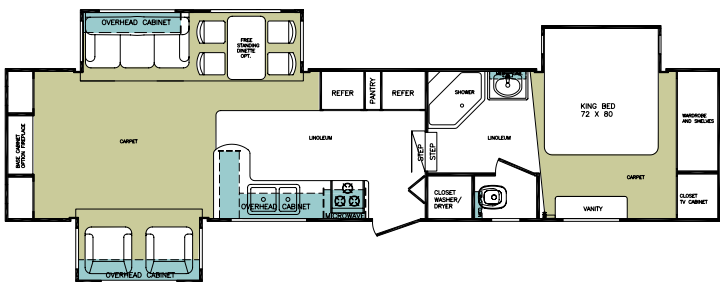
**31SB**



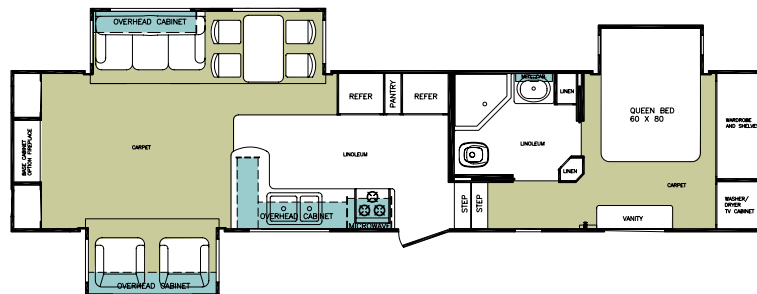
**34QRL**



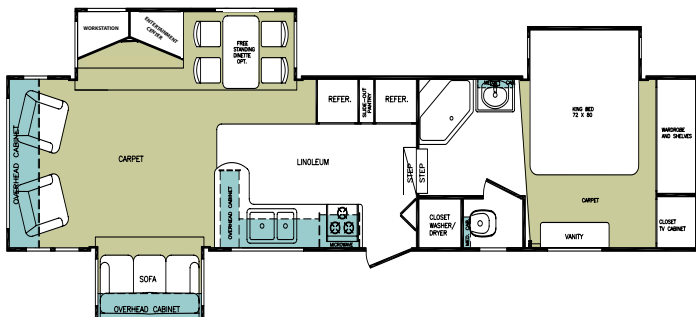
**35RLT**



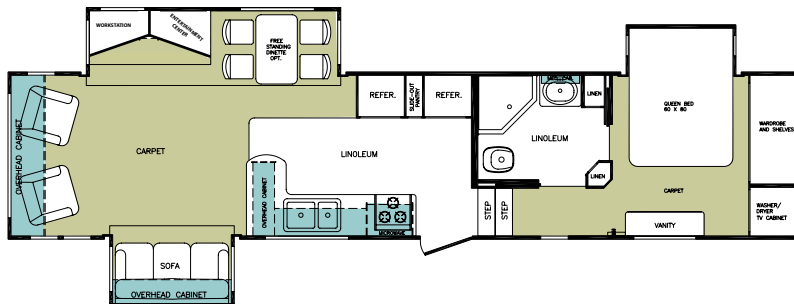
**35SB**



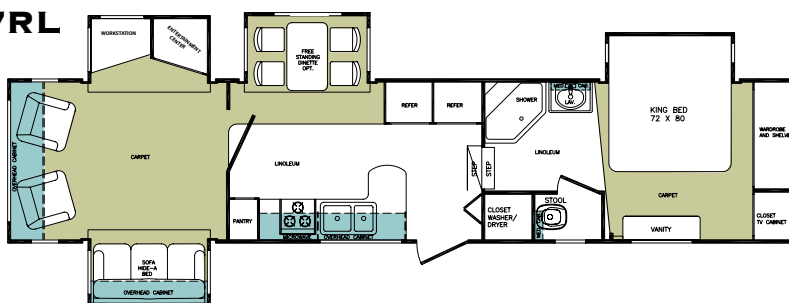
**36TS**



**36SB**



**37RL**



**CARDINAL**





**LUXURY YOU CAN AFFORD**

The Cardinal "Limited Edition" gives you the luxury features that you desire and the same quality construction that Cardinal is known for. You get all of this along with an extremely affordable price.



33TBH



33 LE

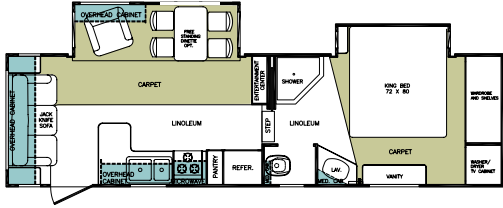


**SPACIOUS PLANS WITH MANY OPTIONS**

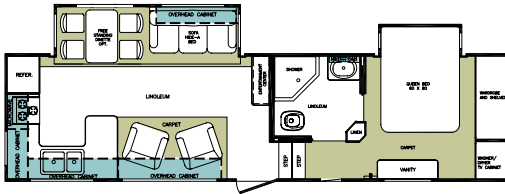
Featuring a sleek fiberglass front cap, radius roof edges and an extended hitch pin, the Cardinal LE is sure to turn heads. Ranging in size from 30' to 38', each floorplan offers a roomy bedroom slide-out, most with king size beds.

# CARDINAL LIMITED EDITION FLOORPLANS

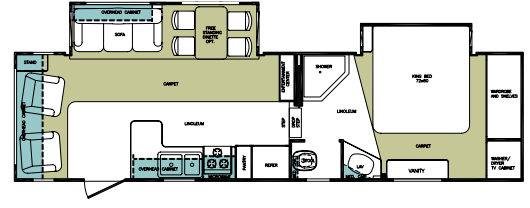
**28RL LE**



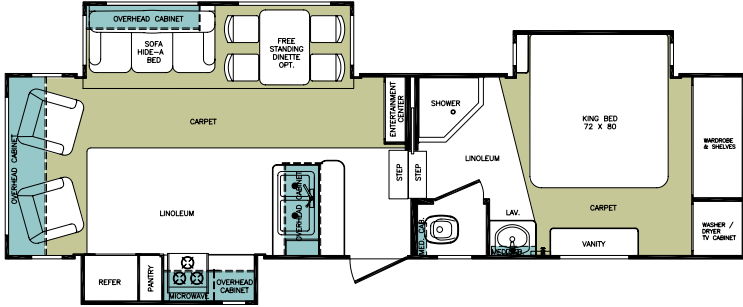
**30RK LE**



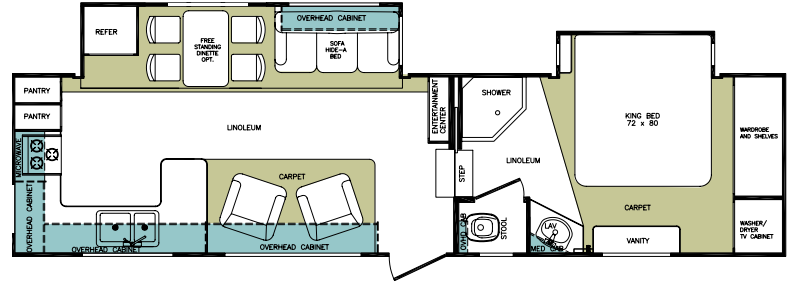
**30WB LE**



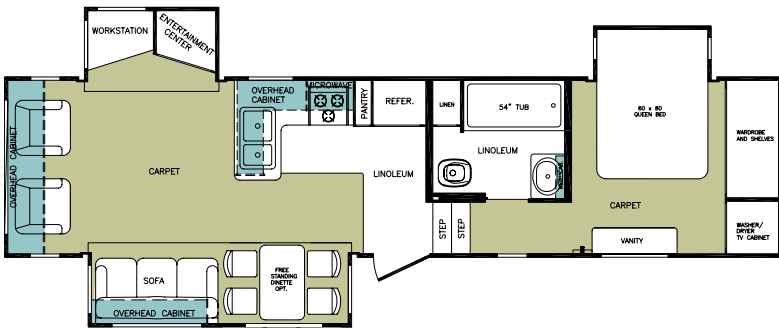
**30QSB LE**



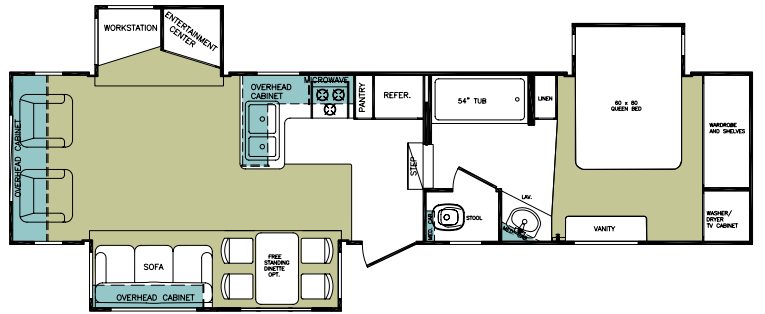
**31RK LE**



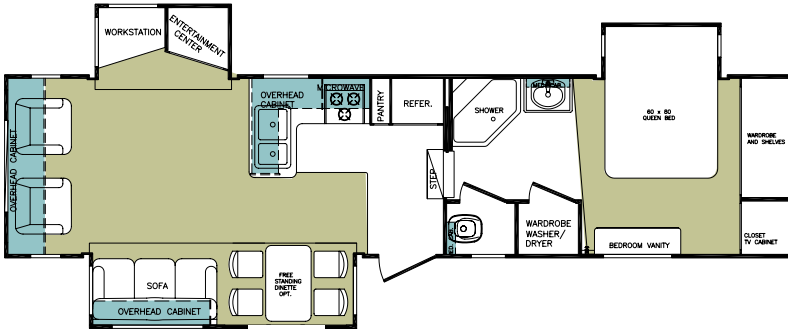
**33SB LE**



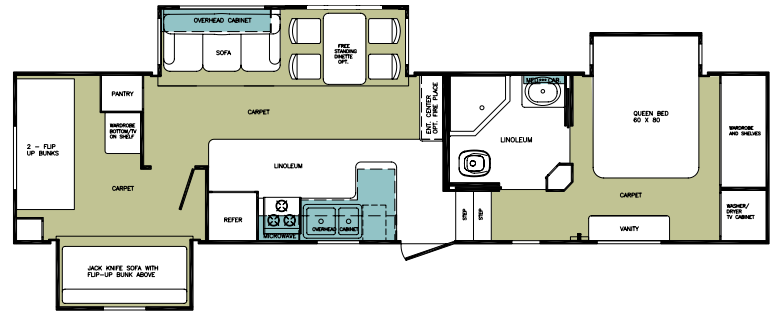
**33WB LE**



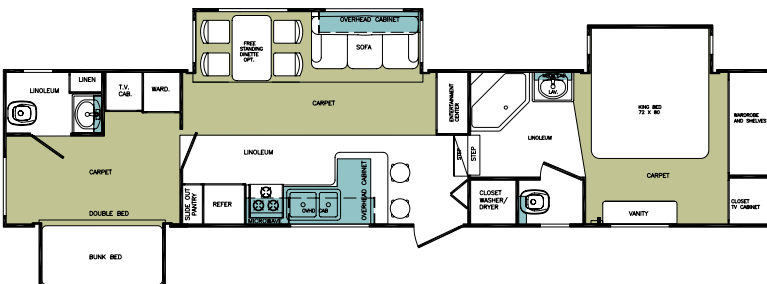
**33TS LE**



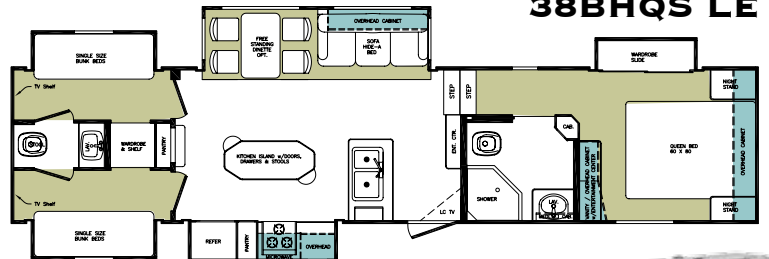
**33TBH LE**



**36-2BH LE**



**38BHQS LE**



**CARDINAL LE**





## CARDINAL TRAVEL TRAILERS

The all-new Cardinal travel trailer line offers many of the same luxurious interior designs and features of our popular Cardinal Fifth wheels, including raised panel cathedral cabinetry, flush floor slide-outs, oak edged countertops, built in entertainment centers, roomy dinettes and hide-a-bed sofas, as well as residential feel bathrooms and bedrooms. Choose from a variety of floor-plans ranging in size from 31' to 32', with one sure to fit your family's needs and budget.



**31RKS with SANGRIA INTERIOR**



### NEW GRAPHICS AND FRONT CAP DESIGN

You'll appreciate the aerodynamic front fiberglass cap, as well as sleek exterior graphics of the Cardinal travel trailer series.

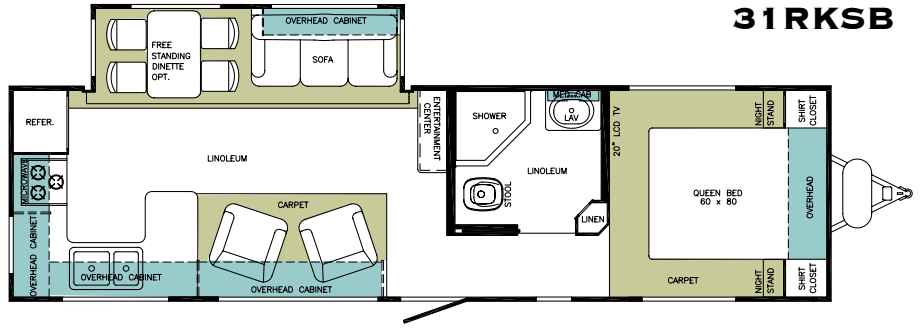
# CARDINAL TRAVEL TRAILER FLOORPLANS

## FEATURES

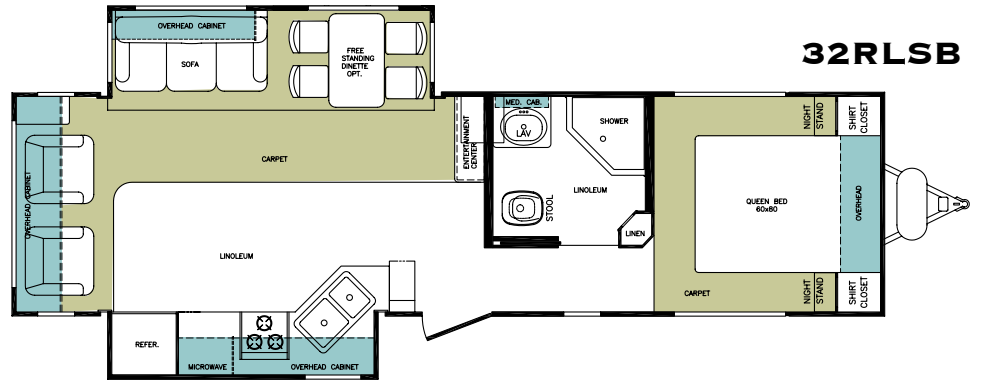
One of the hallmarks of the Cardinal is quality. Our Travel Trailers are built with the same attention to detail and quality as our Fifth Wheels. Listed below are just a few of the many quality features that can be found in the Cardinal Travel Trailers.

- Solid oak cathedral cabinet doors and drawers
- Built-in entertainment center
- Solid Surface edge countertops
- Flush floor slide-outs
- Fiberglass front cap
- Hide-a-bed sofa
- Bright, spacious interiors
- Convenient kitchens
- Plenty of storage space
- Residential style bedding

**ALL CARDINAL PRODUCTS HAVE SPACIOUS, STRONG, EXTRA DEEP FULL SLIDE DRAWERS W/ BALL BEARING DRAWER GUIDES. NOT A BETTER DRAWER SYSTEM AVAILABLE. (SHOWN BELOW)**



**31RKS**



**32RLS**

## CARDINAL INTERIOR COLORS

**SANDSTONE**

**BIRCH**

**FLOORING**

**HONEY**

**MOSS**

**CARPET**

**SANGRIA**

**AQUA**

**RECLINERS**

**LABOY**

## INTERIORS





## CARDINAL STANDARD FEATURES

### INTERIOR

- La-Z-Boy™ High-Back Recliners
- End Table (Most Models)
- Booth Dinette
- Glazed Raised Panel Cabinet Doors
- Deluxe Facia for Slide-Outs
- Ceiling Fan with Light
- Day/Night Shades w/ Bedroom Blackout
- Selector Switch for Slide-Outs (opt. 31SB)
- Phone Jack
- Cable TV Hook-up (Interior & Exterior)
- Solid Surface Kitchen countertop with Large Molded Sink
- Single Lever Pull Out Faucet in kitchen
- Ball-Bearing Drawer Glides w/ Full Slide-Drawer
- Light at Entry Door Step
- Directional Reading Lights – Bedroom and Living Room
- Interior Grab Handle
- Sky View Window (Most Models)
- Sink Covers
- Hide-a-Bed Sofa with Air Mattress
- Residential Kitchen Overhead Cabinet with Shelves
- Overhead Cabinet in Main Slide-Out Room
- Pull Out Pantry Baskets
- Raised Panel Refer Insert
- Safe
- CD Rack

### EXTERIOR

- 16" Spare Goodyear Tire
- High-Gloss Gelcoat Fiberglass Exterior
- Rubber Roof
- Heated and Lighted Exterior Compartments
- Electric Awning
- Roof Ladder
- Dark Tinted Safety Glass Clamp Ring Windows
- Quick Release Pins – Landing Gear
- Attic Vents
- 6000# Axles 30TS, 30MK, 31SB
- 7000# Axles w/ 8 Lug Wheels & Aluminum Rims (34' & Larger)
- Shock Absorbers
- 16" Goodyear Tires and Wheels
- Extended Entry Step
- Large Endwall Windows in Slide-Out w/ Slider Window
- E-Z Lube Axles
- Electric Front Jacks
- Security Lights (2)
- Front and Rear Fiberglass Caps
- TrailAir™ Rota-Flex Extended Hitch
- Folding Assist Handle
- Extra Wide Front Jack Legs
- Outside Stereo Speakers
- Electric Stabilizer Jacks

### CONSTRUCTION

- Flush Floor Hydraulic Slide-Out
- Welded Aluminum Framed, Laminated Sidewalls (2")
- Block Foam Insulation
- 5" Roof Rafters
- Floor Insulation (R- 18)
- Double Insulation in Roof (R-14)
- Sidewall Insulation (R-9)
- 5/8" Tongue and Groove Plywood Floor (Screwed)
- 3/8" Roof Decking (Screwed)

### BEDROOM/BATHROOM

- Innerspring Mattress w/ Ultra Deluxe Bedspread, Pillow and Headboard
- Bed Lifter
- 2nd TV Outlet & Shelf
- Shoe Rack
- Queen Bed 60"x80", King Bed 72"x80" (Depending on Model)
- Porcelain Stool with Sprayer
- Marble Look Shower, Tub and Sink
- Cosmetic Light
- Bath Window (Most Models)
- Fantastic Fan (Bathroom)
- Extra Large Bath Sink w/ Single Lever Faucet
- Glass Shower Door
- Vinyl Floor in Bathroom
- Bath Sky Dome
- Laundry Chute (Most Models)
- Air Conditioning & Heat Ducts in Toilet Area
- Cedar In Closet

### APPLIANCES/SYSTEMS

- 15 BTU Ducted A/C with QuickCool & Solar Panel
- 3- Burner Hi-Output Range w/ 22" Oven w/ Range Cover
- Convection Microwave Oven
- 12 Gal. Gas/Elect. DSI Water Heater
- Large Double Refer (9') w/ Adjustable Temp. Control
- TV Antenna w/ Booster
- Water Heater Bypass
- Heated and Enclosed Holding Tanks
- LP Leak Detector
- 77 Gal. Fresh Water
- Side Mount Satellite Prep
- 120-Gallon Waste Tanks (40 Gal. Each)
- Water Purifier
- 35M BTU Furnace
- 42M BTU Furnace (34' and Larger)
- Trailair™ Equa-Flex Flexable Equalizer
- Quick Winterization Kit
- Monitor Panel
- Command Center for Systems Controls
- 50 AMP Service
- Docking Station (Outside Shower, Cable Satellite Hook-Ups, Black Tank Flush, Gate Valve Release for Waste Tanks, Soap Dispenser)
- 32" Flatscreen HD/LCD TV
- AM/FM Sound System with CD/DVD Player
- Washer/Dryer Prep

## CARDINAL OPTIONS

### INTERIOR

- Free Standing Dinette Table w/ Pull Out Extension and 4 Chairs
- Extra Chair For Computer Desk
- Coffee Maker
- Fireplace (N/A 30TS, 36TS, 36SB)
- Aurora China Toilet with Sprayer
- Coffee Table
- Fantastic Fan w/ Rain Sensor and Wall Mount Controls
- Central Vacuum System
- Pillow Top Mattress
- Garden Tub IPO Neo-Angle Shower
- Shaw™ Wood Grain Laminate Flooring
- La-Z-Boy™ Leather Recliners
- Soft Touch Ceiling
- 19" LCD Bedroom TV
- Corian countertops

### APPLIANCES/SYSTEMS

- Generator Prep
- 5.5 KW Onan Generator (LP)
- Stack Washer/Dryer
- Wire & Frame for 2nd A/C
- 2nd A/C (13.5BTU) in Bedroom
- Satellite Prep (RG6-Roof Mount)
- 9' Refer with Ice Maker

### EXTERIOR

- 16" Aluminum Wheels (30TS, 30MK, 31SB)
- Battery
- 9000 A&E Awning (w/ Wrap)
- Deluxe Electric Awning with Remote and Rain Sensor
- Center Awning Support
- TrailAir™ Pin Box
- TrailAir™ Suspension
- Thermo-Pane Windows (Safety Glass)
- 12V Battery Disconnect
- Aluminum Roof Trusses
- Slide-Out Awnings
- Custom Paint
- Boat Hitch
- Hydraulic Front Jacks
- Panoramic Windows
- Arctic Insulation Package:
  - Roof Insulation R-22
  - Floor Insulation R-28
- Outside Gas Grill (Most Models)

## CARDINAL LE STANDARD FEATURES

### INTERIOR

- La-Z-Boy™ High-Back Recliners
- Booth Dinette
- Glazed Raised Panel Cabinet Doors
- End Table (Most Models)
- Ball-Bearing Drawer Glides w/ Full Slide-Drawer
- Light at Entry Door Step
- Hide-a-Bed Sofa with Air Mattress
- Overhead Cabinet in Main Slide-Out Room
- Pull-Out Pantry Baskets
- Cable TV Hook-ups (Interior and Exterior)
- Ceiling Fan with Light
- Phone Jacks
- Sky View Window (Most Models)
- Day/Night Shades with Bedroom Blackout
- Knife and Spice Rack
- Sink Cover
- Slide Out Facia

### EXTERIOR

- 16" Goodyear Spare Tire
- High-Gloss Fiberglass Exterior
- Rubber Roof
- Electric Awning
- Dark Tinted Safety Glass Clamp Ring Windows
- Radius Entry Door
- Shock Absorbers
- 16" Goodyear Tires & Wheels
- Extended Entry Step
- Large Endwall Windows in Slide-Out w/Slider Windows
- E-Z Lube Axle
- Fiberglass Front Cap
- Folding Assist Handle
- Electric Stabilizer Jacks
- Security Lights (2)
- Electric Front Jacks
- Roof Ladder
- Raised Panel Refer Insert
- Quick Release Pins on Landing Gear
- Attic Vents
- 6000# Axles
- 7000# Axles with 8 Lug Wheels and Aluminum Rims (36-2BH, 38BHQS)
- Heated and Lighted Storage Compartments
- TrailAir™ Rota-Flex Extended Hitch
- Extra-Wide Front Jack Legs
- Outside Stereo Speakers

### CONSTRUCTION

- Flush Floor Hydraulic Slide-Out w/ Laminated Walls and Ceiling
- Welded Aluminum Framed, Laminated Sidewalls (2")
- Block Foam Insulation
- 5" Roof Rafters
- Floor Insulation (R- 18)
- Double Insulated in Roof (R-14)
- Sidewall Insulation (R-9)
- 5/8" Tongue and Groove Plywood Floor (Screwed)
- 3/8" Roof Decking (Screwed)

### BEDROOM/BATHROOM

- Innerspring Mattress w/ Ultra Deluxe, Bedspread, Pillows and Headboard
- Queen Bed 60"x80, King Bed 72" x 80" (Depending on Model)
- Bed Lifter
- 2nd T.V. Outlet and Shelf
- Porcelain Stool w/ Foot Flush
- Bath Window (Most Models)
- Deluxe Shower with Glass Shower Door
- Vinyl Floor in Bathroom
- Bath Sky Dome
- Laundry Chute (Most Models)
- Fantastic Fan (Bathroom)
- Air Conditioning & Heat Ducts in Toilet Area

### APPLIANCES/SYSTEMS

- 15 BTU Ducted A/C with QuickCool with Solar Panel
- Microwave
- 12 Gal. Gas/Elect. DSI Water Heater
- Double Door Refer (9") w/ Adjustable Temp. Control
- TV Antenna w/ Booster
- Water Heater Bypass
- LP Leak Detector
- 77 Gal. Fresh Water
- Water Purifier
- 35M BTU Furnace
- 42M BTU Furnace (36-38')
- Monitor Panel
- Command Center for Systems Controls
- Selector Switch for Slide-Outs (Option on 2 Slide Out Models)
- 3-Burner Hi-Output Range with 22" Oven and Range Cover
- Black Tank Flush
- 50 AMP Service
- Quick Winterization Kit
- Heated and Enclosed Holding Tanks
- 32" Flatscreen HD/LCD TV
- Washer/Dryer Prep (N/A 38' Models)

## CARDINAL LE OPTIONS

### INTERIOR

- Free Standing Dinette Table w/4 Chairs
- Coffee Maker
- Aurora China Toilet w/Sprayer
- Coffee Table
- Garden Tub IPO Neo-Angle Shower
- Fantastic Fan w/ Rain Sensor and Wall Mount Controls
- Central Vacuum System
- Shaw™ Wood Grain Laminate Flooring
- Pillow Top Mattress
- Safe
- Corian countertops
- Fireplace (N/A 36-2BH)
- Marbelized Shower /Garden Tub and Bath Sink
- Queen Bed IPO King
- Soft Touch Ceiling
- Countertop Extension
- Extenda Countertop (33TS only)
- La-Z-Boy™ Leather Recliners
- 19" LCD Bedroom TV
- Oak Step (Some Models)

### APPLIANCES/SYSTEMS

- 9' Refer w/ Ice Maker
- Heat Strip for A/C
- Generator Prep
- 5.5 KW Onan Generator (LP)
- Stack Washer/Dryer (36-2BH & 33TS)
- Wire & Frame for 2nd A/C
- 2nd 13,500BTU-A/C Satellite Prep (RG6-Roof Mount)
- Convection Microwave
- Selector Switch for Slide-Outs (30RK, 30WB, 31RK)

### EXTERIOR

- 16" Aluminum Wheels
- Battery
- 9000 A&E Awning (w/Wrap)
- Deluxe Electric Awning with Remote and Rain Sensor
- Center Awning Support
- Trail Air Pin Box
- Trail Air Suspension
- Thermo-Pane Windows (Safety Glass)
- 12V Battery Disconnect
- Aluminum Roof Trusses
- Slide-Out Awnings
- Boat Hitch
- Hydraulic Front Jacks
- Panoramic Windows
- Rear Fiberglass Cap (N/A 30RKLE)
- Gelcoat Fiberglass
- Outside Gas Grill (N/A 38BHQS)
- Arctic Insulation Package: Roof Insulation R-22 Floor Insulation R-28

- Docking Station (Outside Shower Cable/Satellite Hookups, Black Tank Flush, Gate Valve Release for Waste Tanks, Soap Dispenser)
- TrailAir™ Equa-Flex Flexible Equalizer
- AM/FM Sound System with CD and DVD Player

CARDINAL LE





## TRAVEL TRAILER STANDARD FEATURES

### INTERIOR

- La-Z-Boy™ High-Back Recliners
- Booth Dinette
- Day/Night Shades with Bedroom Blackout
- Phone Jacks
- Cable TV Hook-up
- End Table
- Hide-a-Bed Sofa with Air Mattress
- Slide-Out Facia
- Glazed Raised Panel Cabinet Doors
- Ball-Bearing Drawer Glides w/ Full Slide-Drawers
- 3 – Burner Hi-Output Range w/ 22" Oven
- Light at Entry Door Step
- Overhead Cabinet in Main Slide-Out Room
- Cable TV Hook-Ups
- Phone Jack
- Knife and Spice Rack
- Sink Cover
- Raised Panel Refer Insert
- Pullout Pantry Baskets

### EXTERIOR

- Electric Awning
- Dark Tinted Safety Glass Clamp Ring Windows
- Fiberglass Front Cap
- LP Bottle Cover
- Heated and Enclosed Holding Tanks
- Extra-Wide 30" Entry Door (Most Models)
- Radius Roof Edges
- High-Gloss Fiberglass Exterior
- Rubber Roof
- Radius Entry Door
- Extended Entry Step
- Large End wall Windows in Slide-Out w/ Slider Windows
- Folding Assist Handle
- Security Lights
- Attic Vents
- Stabilizer Jacks (4)
- 16" Goodyear Tires and Wheels
- E-Z Lube Axles
- Outside Stereo Speakers
- 16" Spare Tire
- TrailAir™ Equa-Flex Flexible Equalizer

### CONSTRUCTION

- Flush Floor Hydraulic Slide-Out w/Laminated Walls & Roof
- Welded Aluminum Framed, Laminated Side Walls (2")
- Block Foam Insulation
- 5" Roof Rafters
- Floor Insulation (R-18)
- Double Roof Insulation (R-14)
- Sidewall Insulation (R-9)
- 5/8" Tongue and Groove Plywood Floor (Screwed)
- 3/8" Roof Decking (Screwed)

### BEDROOM/BATHROOM

- Innerspring Mattress w/ Ultra Deluxe Bedspread, Pillows and Headboard
- Bed Lifter
- 2nd T.V. Outlet and Shelf
- Porcelain Stool w/ Foot Flush and Sprayer
- Deluxe Shower
- Glass Shower Door
- Fantastic™ Fan (Bathroom)
- Vinyl Floor in Bathroom

### APPLIANCES/SYSTEMS

- 15 BTU A/C w/ QuickCool and Solar Panel
- 3-Burner Hi-Output Range (22") w/Cover
- Microwave
- 12 Gal. Gas/Elect. DSI Water Heater
- Double Door Refer (9' w/ Adjustable Temp. Control)
- TV Antenna w/ Booster
- Water Heater Bypass
- 35M BTU Furnace
- Black Tank Flush
- 50 AMP Service
- Command Center for Systems Control
- LP Leak Detector
- Water Purifier
- Monitor Panel
- Black Flush Tank
- Quick Winterization Kit
- AM/FM Sound System w/CD and DVD Player
- 32" Flat-Screen HD/LCD TV

## TRAVEL TRAILER OPTIONS

### INTERIOR

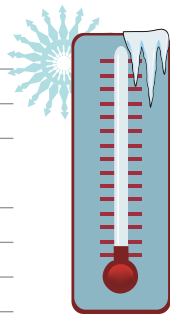
- Free Standing Dinette Table w/ Pull Out Extension and 4 Chairs
- Pillow Top Mattress
- 9' Refer w/ Ice Maker
- Garden Tub
- Coffee Maker
- Aurora China Toilet with Sprayer
- Shaw™ Wood Grain Laminate Flooring
- Convection Microwave
- Marbelized Shower/Garden Tub and Bath Sink
- Heat Strip for A/C
- Wire and Frame for Second Air Conditioner
- La-Z-Boy™ Leather Recliners
- Satellite Prep with Roof Mount
- Fantastic™ Fan w/Rain Sensor and Wall Mount Controls
- Corian countertops

### EXTERIOR

- Front Power Jacks
- 16" Aluminum Wheels
- Outside Shower
- 12V Battery Disconnect
- Shock Absorbers
- Slide – Out Awnings
- Roof Ladder
- Center Awning Support
- Battery
- Thermopane Windows (Safety Glass)
- Trail-Air™ Suspension
- Gelcoat Fiberglass
- Panoramic Windows
- Aluminum Roof Trusses
- Deluxe Electric Awning with Remote Control and Rain Sensor
- Arctic Insulation Package
  - Roof Insulation R-22
  - Floor Insulation R-28
- Outside Gas Grill (Most Models)

## SPECIFICATIONS: TRAVEL TRAILER

Models	31RKS	32RLS
UVW - (lbs. - approx.)	8355	8470
Hitch Weight (lbs. - approx.)	890	1040
GAWR - (lbs.)	12000	12000
GVWR - (lbs.)	12870	13040
CC - Carrying Capacity (approx.)	4215	4300
Exterior Length	33'8"	34'10"
Exterior Overall Height w/AC	11'-2"	11'-2"
Interior Height - Bedroom	78"	78"
Brake Size	12"	12"
Tire Size - ST235/80R16E	S	S
Fresh Water (gal.)	45	45
Waste Water Holding Tanks (gal.) 3 @ 40 gal.	120	120



## Cardinal-Tested and Approved for Zero Degree Usage.

Our Customers often ask, "Does a Cardinal perform well in cold temperatures?" The answer is "YES!" Cardinal Engineers along with the Dometic® Corporation tested our 37RL in an environmentally controlled chamber, the results were very impressive.

At an Exterior temperature of 0 degrees Fahrenheit the following temperatures were recorded by Dometic® technicians inside of our 37RL:

Bedroom/Bath: 71 Degrees  
 Kitchen/Dinette: 71 Degrees  
 Living Area: 69 Degrees

That's not all, the dump valves, water lines and holding tanks were all fully operational.

You can rest assured that after you purchase a Cardinal you CAN camp in four season environments with confidence.

## SPECIFICATIONS: CARDINAL

Models	30TS	30MK	31SB	34 QRL	35RLT	35SB	36TS	36SB	37 RL
UVW - Unloaded Vehicle Weight (approx.)	10755	N/A	10630	12890	12100	11935	11920	12115	12470
Hitch Weight (lbs.) (approx.)	1950	N/A	1920	1890	1910	1805	1850	1805	2405
GAWR - Gross Axle Weight Rating	12000	12000	12000	14000	14000	14000	14000	14000	14000
GVWR - Gross Vehicle Weight Rating (approx.)	13950	N/A	13920	15500	15500	15500	15500	15500	15500
CC - Carrying Capacity (approx.)	2636	N/A	3290	2051	3101	3006	3021	2826	2566
Exterior Length	33'-6"	N/A	33'-11"	N/A	39'-0"	39'-0"	39'-7"	39'-7"	39'-6"
Exterior Overall Height w/AC	12'-8"	12'-8"	12'-8"	12'-8"	12'-8"	12'-8"	12'-8"	12'-8"	12'-8"
Interior Height - Bedroom	78"	78"	78"	78"	78"	78"	78"	78"	78"
Brake Size	12"	12"	12"	12"	12"	12"	12"	12"	12"
Tire Size	ST235/ 80R16E	S 80R16E	S 80R16E	LT235/ 8016E	LT235/ 85R16G/ 8H ALUM	LT235/ 85R16G/ 8H ALUM	LT235/ 85R16G/ 8H ALUM	LT235/ 85R16G/ 8H ALUM	LT235/ 85R16G/ 8H ALUM
Fresh Water (gallons)	77	77	77	77	77	77	77	77	77
Waste Water Holding Tanks (gal.) 3@40 gal. ea.	120	120	120	120	120	120	120	120	120

Model number of any particular unit does not necessarily reflect the overall length of the unit itself. Dry weight are estimates.

\*\*\* Not available at time of printing.

## SPECIFICATIONS: LE 5TH WHEEL

Models	28RL	30RK	30WB	30QSB	31RK	33SB	33WB	33TSLE	33TBH	36-2BH	38BHQS
UVW - (lbs. - approx.)	N/A	10220	9630	10270	10540	10970	10585	10570	11000	11930	12915
Hitch Weight (lbs. - approx.)	N/A	1680	2070	1780	1920	2260	2120	2130	1990	2050	1975
GAWR - (lbs.)	12000	12000	12000	12000	12000	12000	12000	12000	12000	14000	14000
GVWR - (lbs.)	N/A	13680	14070	13780	13920	14260	14120	14130	13990	15500	15500
CC - Carrying Capacity (approx.)	N/A	2901	3881	3510	2956	2731	3555	3560	2990	3570	2585
Exterior Length	N/A	33'-0"	32'-6"	33'-4"	33'-11"	35'-9"	N/A	36'-2"	36'-5"	40'-8"	40'-5"
Exterior Overall Height w/AC	12'-8"	12'-8"	12'-8"	12'-8"	12'-8"	12'-8"	12'-8"	12'-8"	12'-8"	12'-8"	12'-8"
Interior Height - Bedroom	78"	78"	78"	78"	78"	78"	78"	78"	78"	78"	78"
Brake Size	12"	12"	12"	12"	12"	12"	12"	12"	12"	12"	12"
Tire Size - ST235/80R16E	S	S	S	S	S	S	S	S	S	LT235/ 85R16G/ 8H ALUM	LT235/ 85R16G/ 8H ALUM
Fresh Water (gal.)	77	77	77	77	77	77	77	77	77	77	77
Waste Water Holding Tanks (gal.) 3@40 gal. ea.	120	120	120	120	120	120	120	120	120	160 w/Half Bath	120

Model number of any particular unit does not necessarily reflect the overall length of the unit itself. Dry weight are estimates.

\*\*\* Not available at time of printing.





**Forest River Encourages You to Buy Locally**

Forest River, Inc. strongly encourages our retail customers to purchase from their local dealership whenever possible due to the following factors:

- Our Dealers are as a rule, independently owned and operated businesses. Outside of those customers they personally sold products to, they are not contractually obligated to perform warranty service on Forest River products that were purchased elsewhere. There may be an occasion that you would be required to return to the point of purchase to satisfy warranty requirements.
- Although many dealerships will eventually service products not purchased at their place of business, they will usually take care of their customers and other Forest River customers who are traveling away from their local dealer as they would their own.
- Local purchases allow a customer to establish a relationship with a dealer close to home. This relationship provides the customer with a convenient location for service and support from a "home town" professional.
- The opportunity for a thorough PDI (Pre Delivery Inspection) and product orientation is an additional benefit of buying from your local dealer. Further providing the opportunity for refresher courses or the ability to get questions answered much more conveniently.
- For our Canadian customers, there are also requirements which must be met to bring an RV purchased out of the country to their home. Although not insurmountable, these requirements may involve such things as additional inspections and certifications, taxes and fees. Your local Canadian Dealer is a professional at meeting these requirements.

Forest River's goal is for all RV Owners to fully enjoy their RV experience. In light of this goal, and considering the advantages of buying local, we encourage you to be thorough when determining what product to purchase and which dealer to purchase it from as both are key to your ultimate satisfaction and the realization of your dreams.

**YOUR CARDINAL DEALER**



2008

Forest River, Inc. 58277 St. Rd. 19 Elkhart, IN 46517  
574.296.7700 [www.forestriverinc.com](http://www.forestriverinc.com) [www.forestriveraccessories.com](http://www.forestriveraccessories.com)

All specifications contained herein are based on the latest product information at time of printing. Forest River reserves the right to make changes in colors, materials, equipment and specifications at any time without notice and assumes no responsibility for any errors in this brochure. FOR 0545