

SALEM

Villa

BY FOREST RIVER

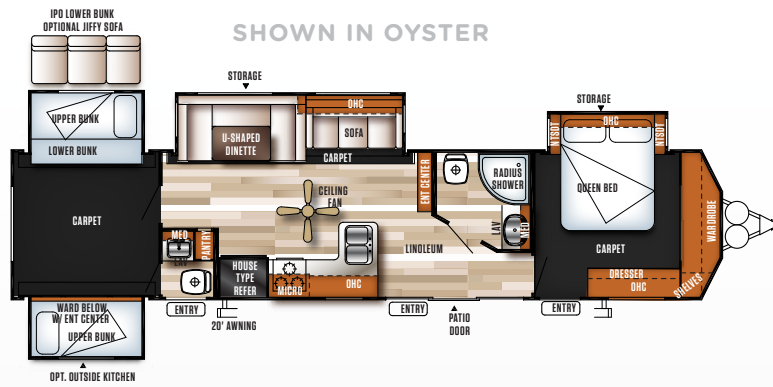
SALEM VILLA





2

SHOWN WITH CUSTOMER-SUPPLIED TV



402QBQ

YOUR ULTIMATE FAMILY GETAWAY

This unit features it all! A massive entertainment style, bunk area. Tremendous storage capacity, from the Master bedroom and throughout the coach. Not to mention, an optional Outside Kitchen and standard side entry into the bathroom, keeping traffic in and out of the coach, at a minimum.



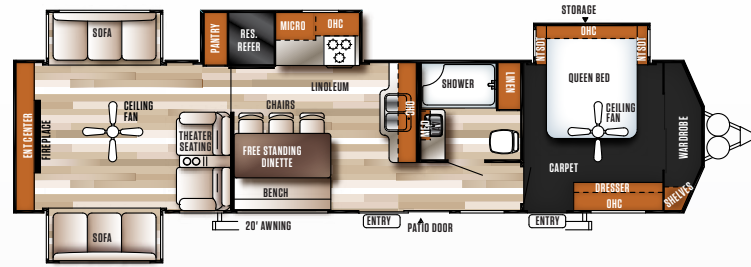
REAR BUNK ROOM



MASTER BEDROOM



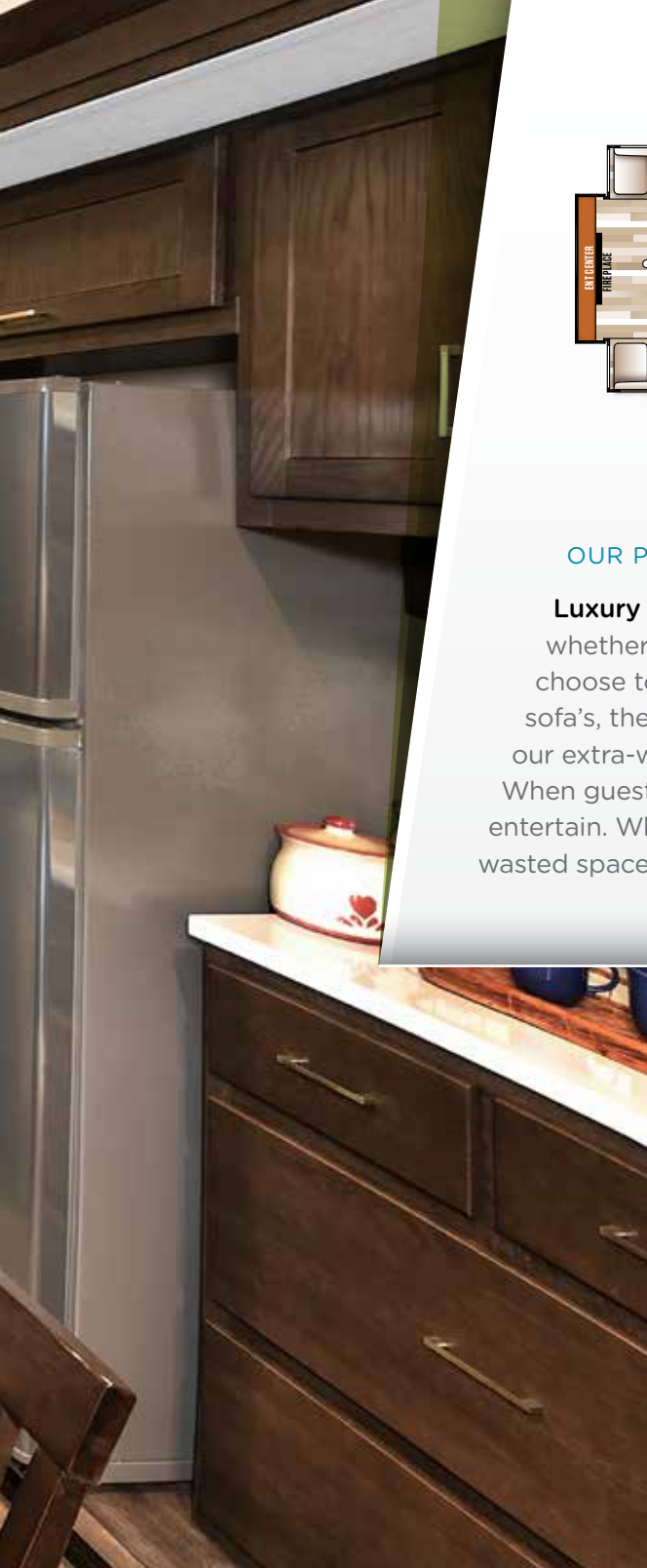
SHOWN IN MINERAL



395RET

OUR PREMIER “ENTERTAINMENT MODEL”

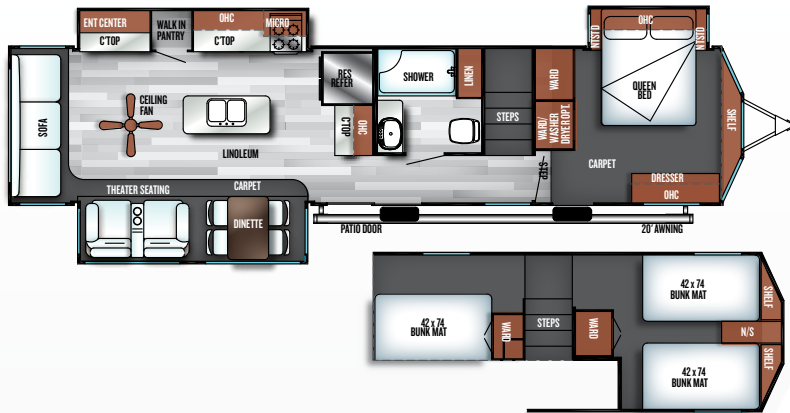
Luxury For Two...Or more. Total comfort, whether just the two of you, or if you choose to entertain. With two full sleeper-sofa's, theatre seating, massive TV space, or our extra-wide fireplace, this unit has it all! When guests arrive, you can comfortably entertain. When they leave, there is no wasted space, for just the two of you!



SHOWN WITH OPTIONAL GEL-COAT SMOOTH SIDING



SHOWN IN MINERAL



42DL

SPACIOUS FAMILY UNIT

A Rare Gem. Introducing one of the market's only full "Split-Loft" units. Not only can you accommodate multiple guests in the large upstairs lofts, but living space is maximized across the unit. Explore this unit and find out why it is rapidly becoming one of the most requested units in the industry!



LOFT BEDROOM



STAIRS TO LOFT BEDROOMS

SECONDARY LOFT BEDROOM



SALEM VILLA INTERIOR FEATURES

CLASSIC

- A. Vaulted Ceilings in Living Rooms
- B. Tinted Radius Safety Glass Windows
- C. LG® Solid Surface Counter Tops (Limited Time Options*)
- D. Decorative Curtain Rods and Modern Roller Shades in Living Room
- E. Accent lighting over main slides (Limited Time Options*)
- F. Hardwood Free Standing Table and 4 Chairs (Optional on Villa Classic)
- G. 84" Interior Heights

ESTATE

- A. Accent Glass Cabinet Doors
- B. 7' Tall Slide Out Heights
- C. 8' Tall Ceilings
- D. Beauflor® Cold, Crack and Tear Resistant Flooring
- E. Thomas Payne Collection, Sleeper Sofa
- F. Shaw® Residential Carpeting with R2X Stain Protection
- G. Brushed Nickel Hardware
- H. Raised-Panel Hardwood Overhead Doors
- I. 40" HD, LCD TV (Opt.)
- J. More Kitchen Counter Top Space

* See your dealer for more details about our Limited Time Options



SALEM VILLA CLASSIC STANDARDS & OPTIONS

COMFORT & CONVENIENCE

- 84" interior height with cathedral ceilings
- Black framed tinted safety glass windows
- Powered self supporting slide rooms
- Modern roller shades w/ autostop (Living room, bed)
- Triple sealed slide outs
- Water heater by-pass
- 6-gallon quick recovery DSI gas/electric water heater
- Ducted Dometic® 13,500 BTU central air conditioner w/ quick cool feature
- In-floor ducted heat w/ 35K BTU furnace
- Stain resistant carpet with padding
- Flush-floor hydraulic slide rooms with manual override (Most models)
- Systems monitor panel
- 6' 2" Tall slide rooms
- Solid wood drawer fronts with ball bearing drawer guides
- Beauflor® vinyl slip resistant flooring

KITCHEN

- Extra large overhead cabinets w/hidden hinges
- Mortise and tenon shaker style hardwood cabinet doors
- 16 cu. ft. residential refrigerator
- 12-volt power range hood w/ light
- Whirlpool® 1.7 cu. ft. oversized microwave
- One piece, water resistant, designer backsplash
- Stainless double basin residential style kitchen sink

- Built in knife holder behind stove (Some models)
- High definition countertops
- 3 burner piezo ignition range oven w/ glass cover
- High rise spring faucet at kitchen sink
- Kitchen waste basket (Some models)
- Pantry with shelves

LIVING ROOM

- **NEW** Bluetooth sound bar w/ TV hook-up
- Thomas Payne® recliners (Per floorplan)
- Thomas Payne® tri-fold sofa (Per floorplan)
- Cathedral ceiling w/ ceiling fan
- Digital TV antenna w/ booster
- Cable and satellite ready
- Extra large picture window at dinette
- Extra large dinette for more comfortable dining and sleeping
- Decorative lights in slide-out

BEDROOM

- **NEW** modern roller shade window treatment (Limited time option)
- "Teddy bear" bunk mattresses (Per floorplan)
- Denver 9" pillowtop mattress
- LED reading lights over master bed
- Designer residential bedspread with five pillows
- Lift up beds w/ gas struts (Most models)
- Cable TV hook-up
- Stain resistant carpet w/ padding
- Solid privacy doors

BATHROOM

- **NEW** giant mirror w/ vanity light
- Ceiling light w/ convenient wall switch
- Porcelain foot flush toilet
- ABS tub or shower w/ one-piece surround

EXTERIOR:

- **NEW** Bluetooth exterior speaker w/ LED light
- Patio awning
- Patio door w/ screen
- Radius entry door
- 15" radial tires (16" with optional fiberglass exterior)
- Entry assist handle
- 2 - 30 lb. LP tanks w/ automatic change over & EZ access LP cover
- City water fill

CONSTRUCTION

- 12" extruded I-beam frame (Per model)
- Cambered chassis
- 40 gallon fresh water tank
- 2" x 3" floor joists 12" on center
- 5/8" 5-ply tongue and groove plywood floor decking
- 2" wall studs maximum 16" on center
- 5" bowed truss roof rafters
- 3/8" walk-on roof decking
- R-7 insulation
- Seamless one piece roof w/ 12 year manufacturer defect warranty

SECURITY & SAFETY

- Smoke detector
- Fire extinguisher
- Carbon monoxide detector
- LP gas leak detector
- Porch light w/ interior switch
- Screen door w/ safety latch
- GFI receptacles and covered patio outlet
- Welded heavy duty safety chains
- Certified to meet all national highway traffic safety administration specs

POPULAR OPTIONS:

- Gel coat fiberglass exterior
- 10-gallon gas/electric DSI water heater
- Skylight over tub
- Outside kitchen (402QBQ only)
- Free standing dinette w/ 4 chairs
- Outside shower
- Detachable hitch

LIMITED TIME PROGRAM OPTIONS:

- Exterior LED light strip under awning
- LED interior mushroom style bright lights
- Central vacuum system
- LG® solid surface kitchen countertops
- Modern roller shades w/ autostop (Living room, bed)
- Recessed stove with glass stove cover
- Stainless steel kitchen appliances
- LED accent light pkg: under-cabs and over living room slides
- Stainless steel roll up sink cover

BUILT TO LAST.

- 1 Radius triple entry steps
- 2 102" exterior width for increased living space (96" on Villa Classic)
- 3 110 volt residential style exterior light (Varies per model)
- 4 Standard patio door
- 5 15" radial tires (16" with crème high gloss gel coat option)
- 6 12" I-beam powder coated frame (per model)
- 7 5/8" tongue and groove plywood flooring
- 8 Residential carpet w/ padding
- 9 Fender skirt
- 10 2" wall studs 16" on center
- 11 15K BTU high output A/C (13.5K on Villa Classic)
- 12 Seamless one-piece roof (12 yr. manufacturer defect warranty)
- 13 3/8" roof decking (Full walk-on roof)
- 14 R-7 fiberglass insulation throughout
- 15 Dual LP bottle cover w/ easy access
- 16 5" truss roof rafters 16" on center
- 17 Aluminum siding (High gloss gel coat opt.)
- 18 96" interior height (Villa Estate), 84" interior height (Villa Classic)
- 19 30" Radius fiberglass door





AMISH CRAFTSMANSHIP

Only the finest attention to detail goes into each Salem. Our skilled craftsmen have many years of experience building beautifully finished cabinetry. The solid nature of our well-designed woodwork is another reason why Salem is the best built RV on the road.

SALEM VILLA ESTATE STANDARDS & OPTIONS

COMFORT AND CONVENIENCE

- 8 Foot tall ceiling heights
- 7 Foot tall slide heights
- Deluxe window package with tinted glass windows
- Beauflor® plank wood linoleum
- 102" Exterior width for increased living space
- Wider hallways
- Water heater by-pass
- Wired and braced for second A/C (2nd A/C standard on 4092BFL and 42DL)
- Modern roller shades w/ autostop in living room, bed (Limited program option)
- 20-Gallon electric water heater
- Ducted Dometic® 15,000 BTU central air conditioner w/ quick cool feature
- In-floor ducted heat w/ 35K BTU furnace
- Flush-floor hydraulic slide rooms w/ manual override (Most models)
- Systems monitor panel
- Shaw stain resistant carpet with padding
- 50 Amp electrical service and 65 Amp 12 volt converter
- Solid hardwood drawer fronts

KITCHEN

- **NEW** whirlpool 1.7 cu. ft. oversized microwave
- **NEW** one piece designer backsplash

- 2 outlets in every kitchen
- Skylight in every kitchen
- Brushed nickel hardware
- Free standing dinette with 4 chairs
- Extra large, shaker style, overhead cabinets
- Full extension ball bearing drawer guides
- Residential style, built-in oven and cooktop
- 16 Cu. Ft. Residential electric refrigerator
- Pantry with shelves
- High-definition countertops
- Dual basin stainless steel sink

LIVING ROOM

- **NEW** Bluetooth sound bar w/ TV hook-up
- Thomas Payne® collection tri-fold sofa
- Thomas Payne® collection rocker recliners (Per floorplan)
- 4 Speakers
- Digital TV antenna w/ booster
- Cable and satellite hookup
- Glass sliding patio door
- Ceiling fan with wall switch

BEDROOM

- Upgraded "teddy bear" bunk mattresses (Per model)
- Extra large dresser drawers
- Shoe nook at foot of master bed
- Outlets at back-side of master bed

- Denver 9" pillowtop mattress
- Bedspread and decorative pillows
- Ceiling fan (N/A 4092BFL and 42DL)
- Comfort flex (Box spring) bed frame and base with storage (Most models)
- Under bed storage (Most models)
- Cable TV hook-up
- Solid privacy doors

BATHROOM

- 50" Walk-in shower with seat (Most models)
- Giant mirror w/ vanity light
- Full extension ball bearing drawer guides
- Porcelain foot flush toilet(s)
- 12" 10-Blade fantastic bath fan™

EXTERIOR

- **NEW** Bluetooth remote exterior speaker
- Black exterior moldings
- (2) 110V lights on front (Some models)
- Cold crack and mildew resistant awning
- 15" Radial tires (Per floorplan)
- 30 Lb. Double LP tanks w/ automatic change over
- EZ access LP tank cover
- City water fill w/ brass valve
- Swing out entry assist handle

CONSTRUCTION

- 12" Forged I-beam frame
- Cambered chassis
- Seamless holding tanks
- Color coded water lines
- 2" X 3" floor joists 12" on center
- 5/8" 5-Ply tongue and groove plywood floor decking
- 2" Wall studs maximum 16" on center
- 5" Bowed truss roof rafters
- 3/8" Walk-on roof decking
- One-piece, seamless roof w/ 12 year warranty
- Triple sealed slide outs
- R-7 insulation throughout (Floors, walls, ceilings, and slide-outs)

SECURITY AND SAFETY

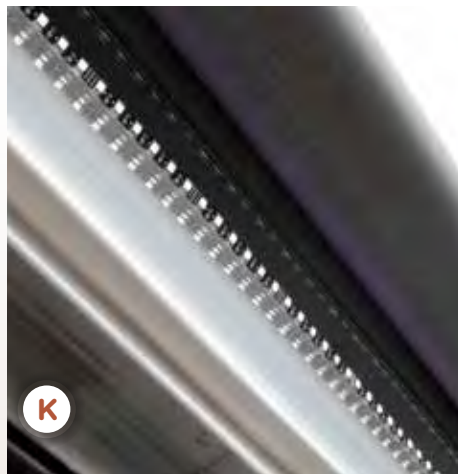
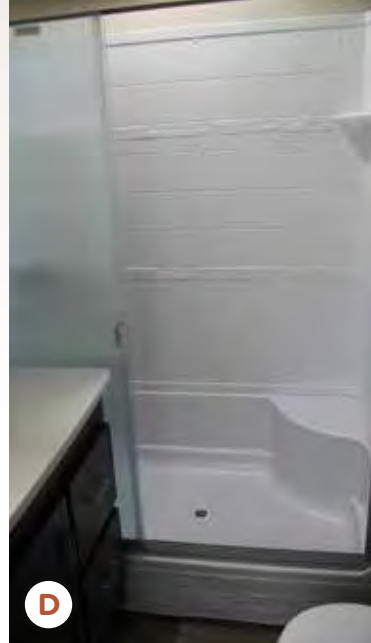
- Smoke detector
- Fire extinguisher
- Carbon monoxide detector
- LP gas leak detector
- Door latch w/ integrated dead bolt lock
- GFI receptacles and covered patio outlet
- Welded heavy duty safety chains
- Lockable fiberglass radius baggage doors
- ANSI 119.2
- Certified to meet all national highway traffic safety administration specifications

POPULAR OPTIONS

- True high gloss gelcoat fiberglass exterior
- Detachable hitch (NA 42DL)
- Outside shower

LIMITED TIME PROGRAM OPTIONS

- Exterior white LED light strip under awning
- LED interior mushroom style bright lights
- Central vacuum system
- LG® Solid surface kitchen & bathroom counter tops
- Modern roller shades w/ autostop (Living room, bed)
- Stainless steel kitchen appliances
- 1.7 cu. ft. oversized Whirlpool® microwave
- Stainless steel dual basin undermount sink
- LED accent light pkg: under-cabs and over living room slides
- Stainless steel roll up sink cover



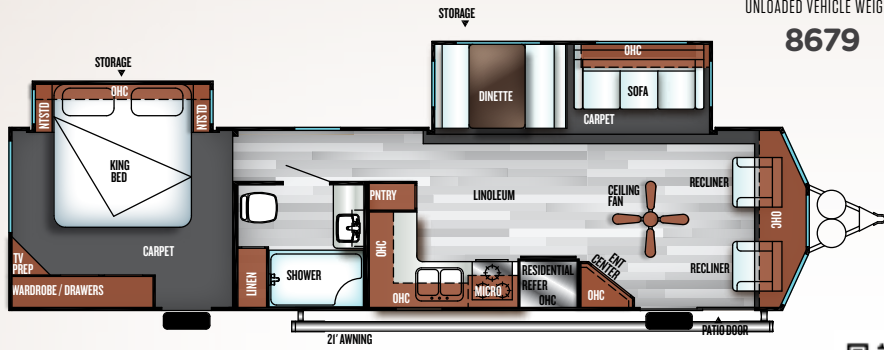
SALEM VILLA CLASSIC
VILLA ESTATE

POPULAR FEATURES

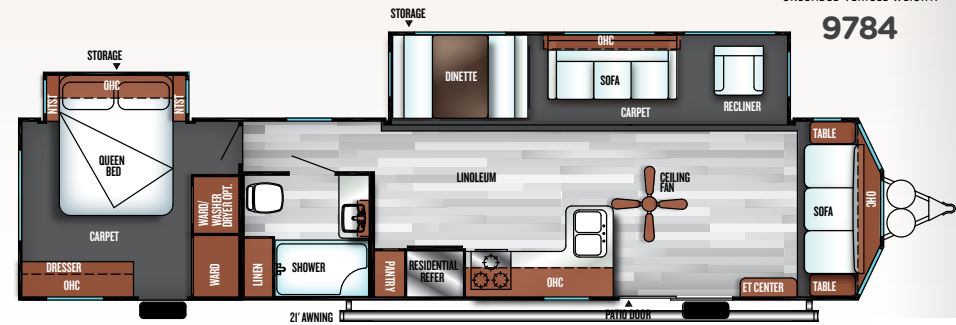
- A. New Accent Glass on Cabinets
- B. Thomas Payne Collection Hide-A-Bed Sleeper Sofa
- C. Frosted Glass Corner Shower (Per floorplan)
- D. 50" Walk-in Shower with Seat (Per floorplan)
- E. Curtain Rods and Modern Roller Shades in Living Room
- F. Stainless Steel Appliances and Residential Refrigerator
- G. Over Slide LED Accent Lighting (Limited Time Options*)
- H. Recessed Stove with Glass Cover (Villa Classic Only)
- I. LG® Solid Surface Countertops (Limited Time Options*)
- J. Stainless Steel Roll Up Sink Cover (Limited Time Options*)
- K. White LED Awning Light (Limited Time Options*)

* See your dealer for more details about our Limited Time Options

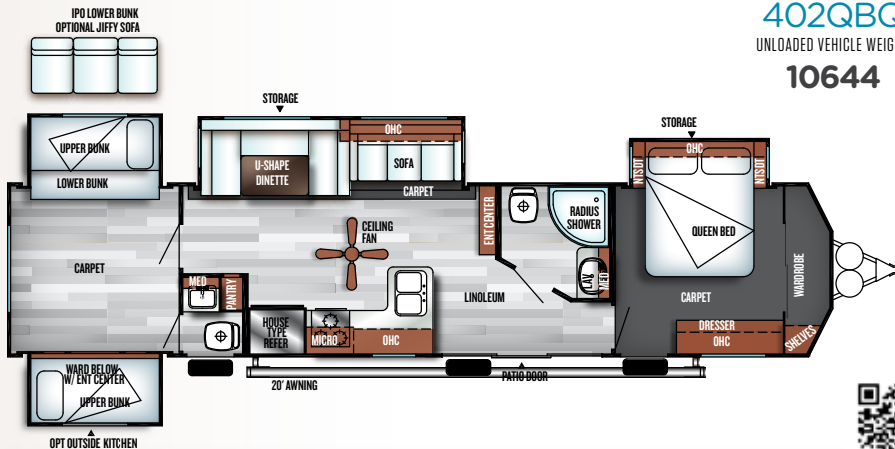
353FLFB
UNLOADED VEHICLE WEIGHT:
8679



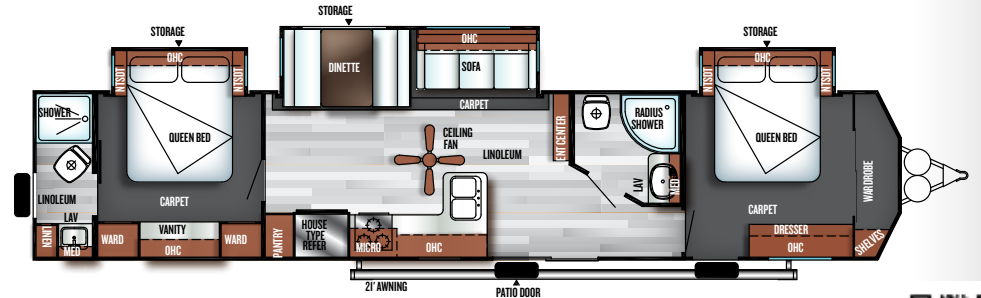
39FDEN
UNLOADED VEHICLE WEIGHT:
9784



402QBQ
UNLOADED VEHICLE WEIGHT:
10644



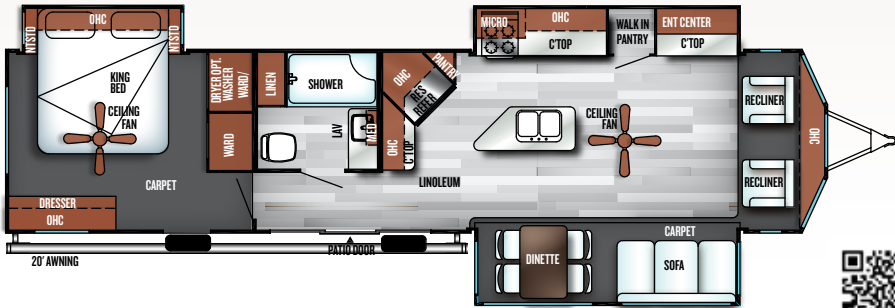
4002Q
UNLOADED VEHICLE WEIGHT:
10299



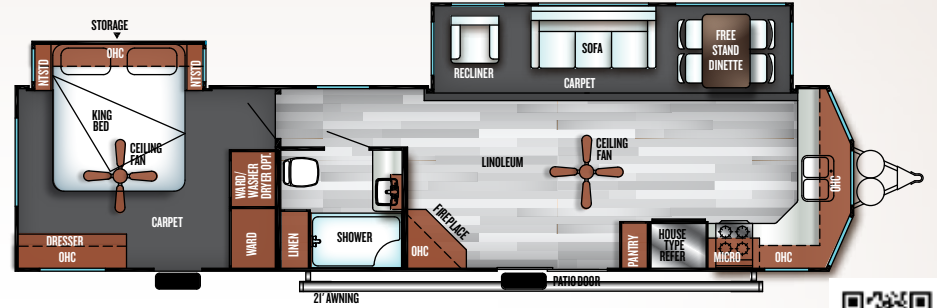
SALEM
CLASSIC
FLOORPLANS & SPECIFICATIONS

	353FLFB	39FDEN	402QBQ	4002Q	393FLT	394FKDS	395RET	4092BFL	42DL
HITCH WEIGHT (LBS.)	1290	1362	1075	1260	1535	1555	1468	1605	1855
AXLE WEIGHT (LBS.)	7330	8363	9510	8980	9435	8520	9830	10248	10805
UVW (LBS.)	8679	9784	10644	10299	11029	10134	11357	11912	12719
CARGO CARRYING CAPACITY (LBS.)	2811	1778	2431	1161	2506	1621	2111	1693	1136
EXTERIOR LENGTH (LBS.)	38' 6"	40' 10"	40' 8"	43' 5"	40' 6"	40' 10"	41' 0"	41' 11"	43' 7"
EXTERIOR HEIGHT (LBS.)	12' 4"	12' 4"	12' 3"	12' 3"	12' 3"	12' 7"	12' 8"	13' 4"	13' 2"
FRESH WATER (GAL.)	39	39	39	39	39	39	39	39	39
BLACK WATER (GAL.)	40	40	90	80	40	40	40	40	40
GREY WATER (GAL.)	50	40	80	90	80	90	80	80	80
TIRE SIZE (IN.)	15"	15"	16"	15"	16"	15"	16"	16"	16"

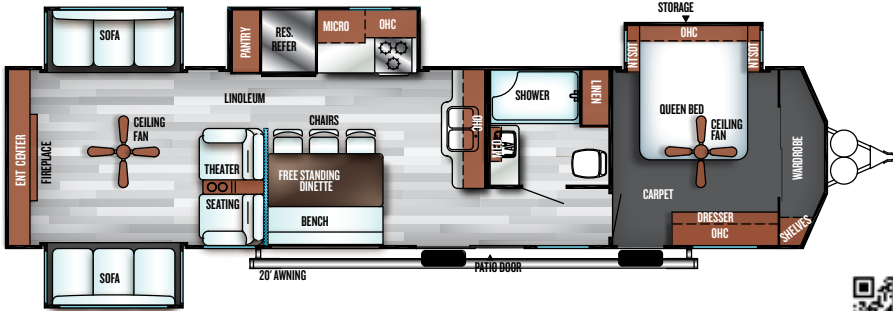
393FLT
UNLOADED VEHICLE WEIGHT:
11029



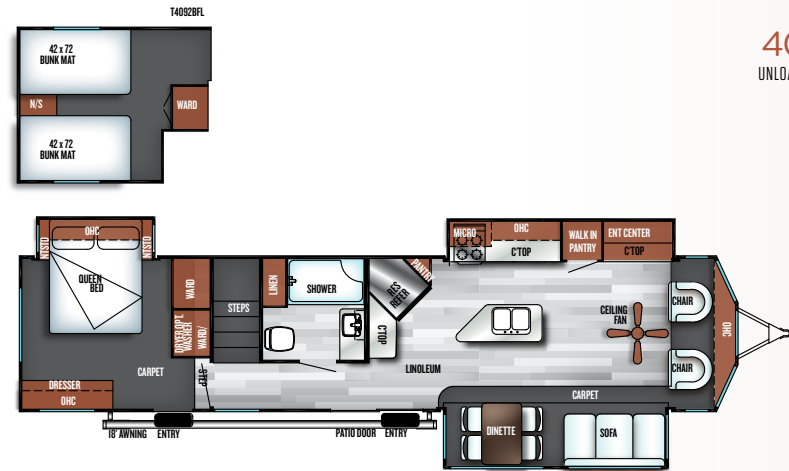
394FKDS
UNLOADED VEHICLE WEIGHT:
10134



395RET
UNLOADED VEHICLE WEIGHT:
11357

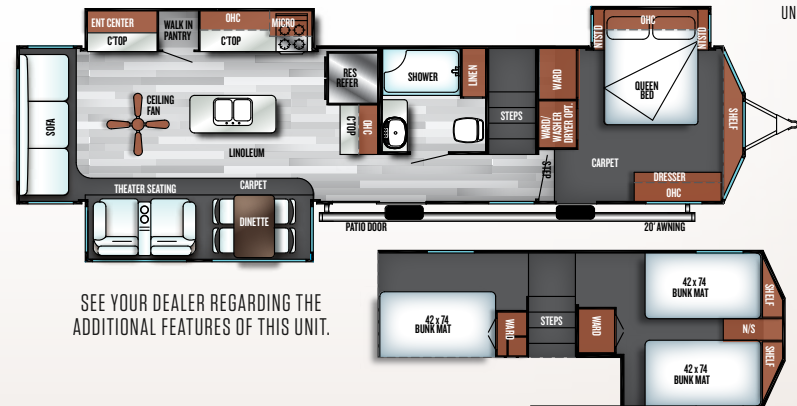


4092BFL
UNLOADED VEHICLE WEIGHT:
12719



GRAND VILLA

42DL
UNLOADED VEHICLE WEIGHT:
12719



SEE YOUR DEALER REGARDING THE ADDITIONAL FEATURES OF THIS UNIT.

SALEM ESTATE

FLOORPLANS & SPECIFICATIONS

THE SALEM LINE-UP

YOUR SALEM DEALER

2018



SALEM



SALEM CRUISE LITE



SALEM VILLA | VILLA ESTATE



SALEM HEMISPHERE

Specification Definitions

GVWR (Gross Vehicle Weight Rating) - is the maximum permissible weight of the unit when fully loaded. It includes all weights, inclusive of all fluids, cargo, optional equipment and accessories. For safety and product performance do NOT exceed the GVWR.

GAWR (Gross Axle Weight Rating) - is the maximum permissible weight, including cargo, fluids, optional equipment and accessories that can be safely supported by a combination of all axles.

UVW (Unloaded Vehicle Weight)** - is the typical weight of the unit as manufactured at the factory. It includes all weight at the unit's axle(s) and tongue or pin and LP Gas. The UVW does not include cargo, fresh potable water, additional optional equipment or dealer installed accessories.

*Estimated average based on standard build optional equipment.

CCC (Cargo Carrying Capacity)** - is the amount of weight available for fresh potable water, cargo, additional optional equipment and accessories. CCC is equal to GVWR minus UVW. Available CCC should accommodate fresh potable water (8.3 lbs per gallon). Before filling the fresh water tank, empty the black and gray tanks to provide for more cargo capacity.

** Estimated average based on standard build optional equipment

Each Forest River RV is weighed at the manufacturing facility prior to shipping. A label identifying the unloaded vehicle weight of the actual unit and the cargo carrying capacity is applied to every Forest River RV prior to leaving our facilities.

The load capacity of your unit is designated by weight, not by volume, so you cannot necessarily use all available space when loading your unit.

All information contained in this brochure is believed to be accurate at the time of publication. However, during the model year, it may be necessary to make revisions and Forest River, Inc., reserves the right to make all such changes without notice, including prices, colors, materials, equipment and specifications as well as the addition of new models and the discontinuance of models shown in this brochure. Therefore, please consult with your Forest River dealer and confirm the existence of any materials, design or specifications that are material to your purchase decision. Litho. U.S.A. FOR 1425 P/W: 2017.11.01



www.ForestRiverBuyLocal.com

FREE MEMBERSHIP
to Forest River Owners' Group

www.forestriverfrog.com



Learn More
Scan this barcode using a QR Reader on your smart phone to learn more about Forest River.



A Berkshire Hathaway company.

Forest River, Inc. 55470 C.R. 1 Elkhart, IN 46515 | (574) 533-5934
www.forestriverinc.com/Salem | www.forestriveraccessories.com



PRE-DELIVERY INSPECTION FACILITY

20,000 square feet of quality assurance. The bare essentials for a premium product. This state-of-the-art facility gives immediate daily feedback to production for quality assurance in every unit built.