

by Forest River

*Berkshire*<sub>XL</sub>



Your Luxury.  
Your Destination.



40E







---

## TRU-BRACE FOUNDATION

---



Introducing the V-Ride™ Rear RV Suspension System from FCCC. As the first ever single axle suspension rated at 21,000 pounds and higher, it's designed for today's demanding luxury motorhome owners- who want the ability to carry more gear, the freedom to equip their interiors with premium amenities, and a comfortable, confident driving experience.

### 6" Roof at the Crown, Welded Aluminum Tube - Laminated Vacuum Bonded with Integrated A/C Ducting

- A Framing is welded 2" aluminum tube
- B 1/4" Luan top layer with 1 piece fiberglass
- C 5-1/4" radius polystyrene insulation
- D Galvanized metal backers for A/C's, satellite, solar panel and antennae

### 1-7/8 Thick Sidewall, Welded Aluminum Tube - Laminated Vacuum Bonded.

- E 1/4" Luan backed fiberglass sidewall
- F Heavy wall aluminum tube around perimeter and around slide openings
- G 1-1/2" polystyrene insulation
- H 1/8" interior décor finishing board

### 3-1/8" Floor, Vacuum Bonded Laminated

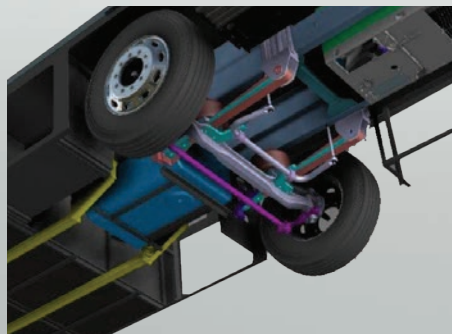
- I Framing is welded 2-1/2" aluminum tube
- J 2-1/2" polystyrene insulation
- K 1-piece 1/2" structure board
- L Core-8 waterproof composite underbelly

### Fiberglass Molded Front and Rear Caps

- Q 1-piece automotive grade bonded windshield
- R Generator slide system

### Full Paint Welded Steel Chassis Structure

- M Tru-Brace, chassis stiffener system
- N 1-piece aluminized steel side skirt
- O 1-piece bent steel storage compartments
- P 1-1/2" insulated steel tube firewall



### TRU-BRACE ANTI-CAMBER SUPPORT BRACING

for more information please visit  
[www.forestriverinc.com/BerkshireXL](http://www.forestriverinc.com/BerkshireXL)

# BERKSHIRE XL DECOR OPTIONS

## CUSTOMIZE YOUR INTERIOR

### WOOD GRAIN OPTIONS (CHOOSE ONE)

- A** Robust Cherry
- B** Bronze Maple



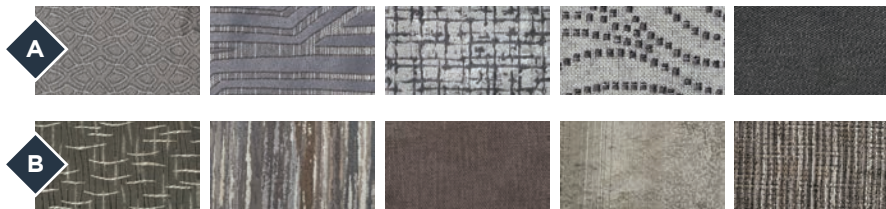
### LEATHERETTE OPTIONS

- A** Warm Grey
- B** Silver Moon



### DESIGNER FABRIC OPTIONS

- A** Mystic Fog
- B** Seashore Glitz



### SURFACE OPTIONS

- A** Standard Polished Porcelain Flooring
- B** Matte Flooring Option
- C** Standard Countertop



## FIXED INTERIOR | White Diamond



Executive Dark Cherry Wood Grain



Milano Dove Leatherette

### DESIGNER FABRICS

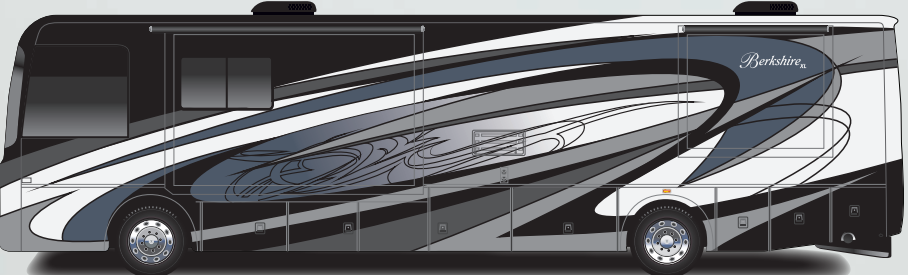




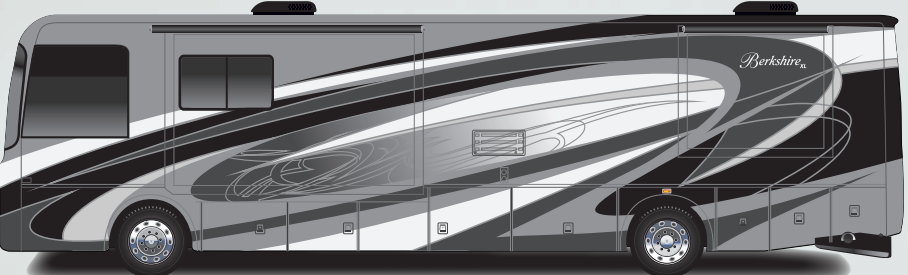
PAINT PACKAGES



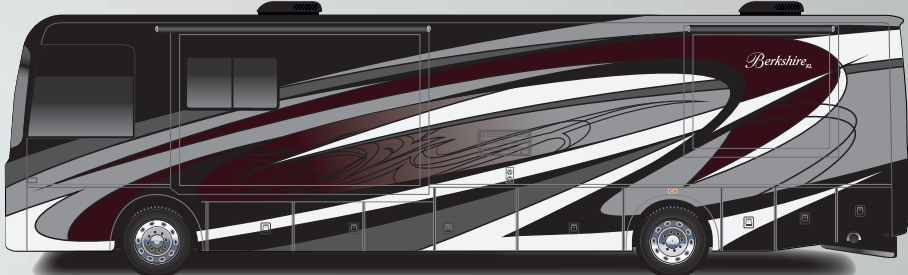
BERKSHIRE XL  
SHOWN IN GLAZED ICE



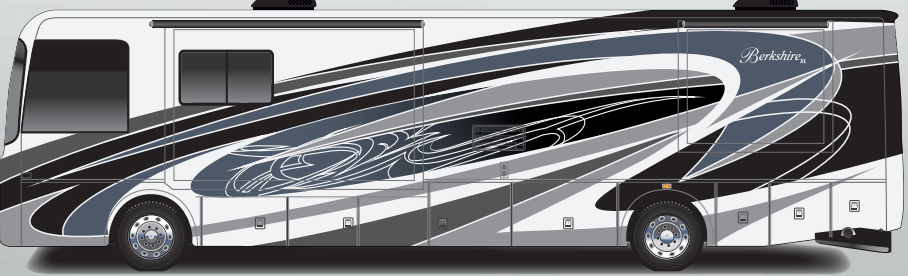
GLAZED ICE



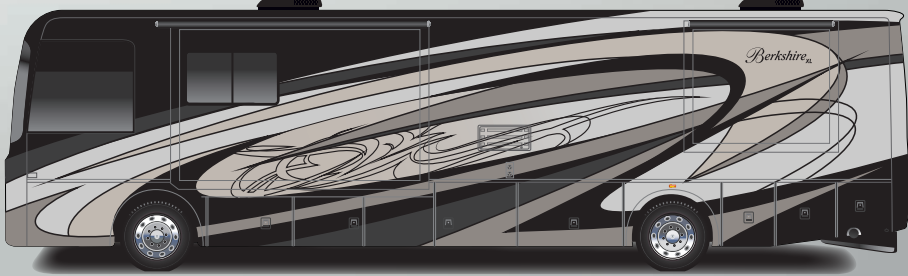
ASH ONYX



METEOR



MANITOU



WARM STONE



## STANDARDS AND OPTIONS

## STANDARDS

---

### Chassis

---

- + Freightliner XCR raised rail chassis
- + Cummins ISL turbo diesel , 380 HP, 2000RPM, 2200GOV RPM, lb/ft @1400 RPM
- + Allison 3000MH 6-speed transmission
- + 120V Engine heater 1000W
- + 22.5" Polished aluminum wheels
- + Michelin X line energy Z 275/80R22.5 tires
- + Trailer hitch, 15,000 # capacity
- + 100 gallon, locking dual fill fuel tank
- + Driver side fill, 13 gallon DEF tank
- + Day time running lights
- + 7-Pin tow power connector
- + 18.7 CFM air compressor
- + Farr Eco-air cleaner
- + Air filter restriction indicator
- + Fuel/water separator
- + Brake line air dryer w/ heater
- + Automatic, heated moisture ejectors
- + Heavy duty-windshield wipers w/ intermittent function
- + 160 amp alternator
- + Full air ABS brakes w/ auto slack adjuster
- + Two (2) 1900 CCA at 0 degree Fahrenheit, maint. free
- + Variable exhaust brake
- + Suspension Neway front and Freightliner V-Ride rear
- + Sachs custom tuned shock absorbers
- + 55 degree wheel cut

- + Auto air suspension deflation system
- + Rear mounted radiator
- + Transmission oil cooler
- + 5 year / 100,000 mile coolant (some maintenance required)
- + Tire pressure monitoring system (TPMS)
- + Electronic cruise control w/ high idle

---

### Construction and Exterior

---

- + Fiberglass front and rear caps
- + Full body painted exterior
- + Four (4) point fully auto hydraulic leveling system w/ auto air dump
- + Steel basement structure
- + Tru-Brace anti camber chassis support system
- + Rust resistant aluminized steel chassis skirts
- + Diamond shield front mask protective film
- + One-Piece fiberglass roof
- + Top-mount remote mirrors w/ heat, turn signal & side view cameras
- + Frameless dual pane, dark tint windows
- + Automotive foam and Ziebart seal undercoating
- + Carefree power door awning
- + Carefree Latitude dual pitch patio awning w/ LED light & wind sensor
- + Carefree s/o topper w/ covers
- + Full height strut assisted compt doors w/ full pass through storage
- + "One Key" system, ext-compartment, entry door & fuel fill doors

- + Quiet integrated A/C intake/ducting roof system
- + Crowned and layered vacuum bonded fiberglass roof
- + Vacuum bonded 3" floor w/ tubular aluminum frame
- + Gel coat vacuum bonded sidewalls, s/o floors & walls
- + Block foam polystyrene insulation in walls, roof and floors
- + 30" Entryway
- + Channeled drains for A/Cs
- + Tube steel firewall w/ polystyrene insulation
- + Lighted exterior assist handle
- + 84" interior ceiling height
- + PTL steel entrance door w/ deadbolt
- + Auxiliary air chuck (front driver-side compartment)
- + LED headlights & marker lights
- + Full length mud flap w/ chrome Berkshire name
- + Slide tray in basement compartment

---

### Electrical

---

- + All electric
- + 50A service w/ auto transfer switch & 30' power cord
- + EZ power cord entry
- + 10kW Onan diesel generator w/ manual slide tray (40E, 40D, 40C)
- + 8kW Onan diesel generator w/ manual slide tray (37A Only)
- + Energy management system
- + Electronic house power disconnect switch
- + Generator start/stop switch (On dash/bedroom)



- + Multi-plex w /Precision plex app control
- + Dimmer control lighting throughout
- + LED lighting package
- + Decorative bath, dinette & wall lights w/ applicable
- + Individual bed led reading lights in overhead
- + 2800W pure sine inverter/converter
- + Auto generator start control
- + (6) Six volt deep cycle house batteries
- + House Battery Distribution Center (HBC)
- + Chassis & house battery bank master shut off switches
- + LED porch & patio lights
- + Easy read 12v house/ Chassis load centers
- + Automotive chassis fuse panel (front driver-side comp)
- + Ceiling fan in bedroom
- + Kitchen accent lighting
- + 100w Solar Panel w / mppt controller

---

## Plumbing

---

- + Variable speed 4GPM water pump
- + Individual zoned hot/cold manifold water supply system
- + 4-way water management valve in water bay compartment
- + Bath - solid surface under mount sink
- + Kitchen - Stainless steel under mount sink
- + One-piece fiberglass shower w/ glass door & skylight
- + Whole house water filter
- + Black water tank flush system

- + AquaView showermiser water saver
- + Kitchen single lever faucet w/ pull-out sprayer
- + Porcelain china bowl toilet w/ foot flush (N/A 37A)
- + Tecma macerator toilet
- + Clean-easy exterior shower hose
- + Convenience monitor panel in water bay door
- + 360 Roof vent caps

---

## Driver/Passenger Cockpit

---

- + One-piece windshield
- + Power front day/night shades
- + Passenger & driver window day/night shades
- + 3D carbon fiber dash panels
- + Optiview glass instrument panel
- + Steering wheel - w/ radio audio, wipers, engine brake, cruise & transmission
- + Auxiliary fog lights
- + 10" Dash radio w/ color back-up, side view cameras and navigation
- + Sirius/XM satellite roof mounted antenna
- + Villa soft touch wide driver seat swivel, recline & 6-way pwr adj.
- + Villa soft touch wide pass/seat swivel, recline & power foot rest
- + Passenger seat workstation
- + Driver console wireless cellphone charger
- + Lighted step well
- + Two (2) Defroster fans w/ high and low settings
- + Automotive dash AC/ heater w/ deluxe controls
- + Multiple auxiliary/USB & 12V charging ports at dash
- + Power flush floor Stepwell cover

- + Multiple entry assist handles
- + Driver & passenger LED ceiling map lights
- + Emergency/aux engine start switch at dash
- + Fitted cockpit floor mat w/ Berkshire logo
- + Fitted entryway step carpet mats
- + Key-less entry

---

## Interior

---

- + Polished porcelain tile throughout
- + Semi gloss hardwood cabinetry w/ glazing, interior doors & slide-out fascia (glazing N/A w/ executive dark cherry option)
- + Hardwood raised panel cabinet doors w/ glazing
- + Front bed lift in cockpit
- + Living room ceiling crown trim
- + Carpeted slide-outs w/ applicable
- + Window valances
- + "Soft Touch" dream booth dinette w/ storage underneath
- + Villa soft touch Sofa
- + Villa soft touch hide-a-bed sofa (w/ recliner 37A) (N/A 40E)
- + Villa soft touch love seat (N/A 37A, 40C, 40E)
- + Polished solid surface kit/bath c-tops & back splash w/ tile inserts
- + Galley storage compartment for sink covers
- + Kitchen pantry
- + Bi-fold doors, bunk beds (N/A 37A, 40D)
- + "Soft Touch" padded ceiling
- + Roller style day/night shades
- + 72"x 80" Serta king bed w/ bedspread and decorative pillows

- + Bed night stands, w/ dual USB jack & overhead cabinetry
- + Mirrored vanity overhead cabinet doors
- + Towel bar, toilet paper holder & towel ring
- + Electronic safe
- + LP gas, carbon monoxide & smoke detectors
- + Fire extinguisher

---

## Appliances

---

- + (3)15,000 btu A/C's (front & Rear w/ heat pump) (N/A 37A)
- + (2)15,000 btu A/C's (both w/ heat pump) (N/A 40C, 40D, 40E)
- + Holding tank heat pads
- + Aqua Hot 250D hydronic heat w/ continuous flow hot water
- + 30" OTR convection microwave oven
- + 23 cf French door residential refrigerator w/ ice maker
- + Power fan in bathroom w/ rain cover
- + Maxxair in galley w/ wireless remote control w/ rain cover
- + Washer/dryer prep
- + Electric fireplace
- + Central vacuum system
- + Electric induction glass cook top

---

## Entertainment

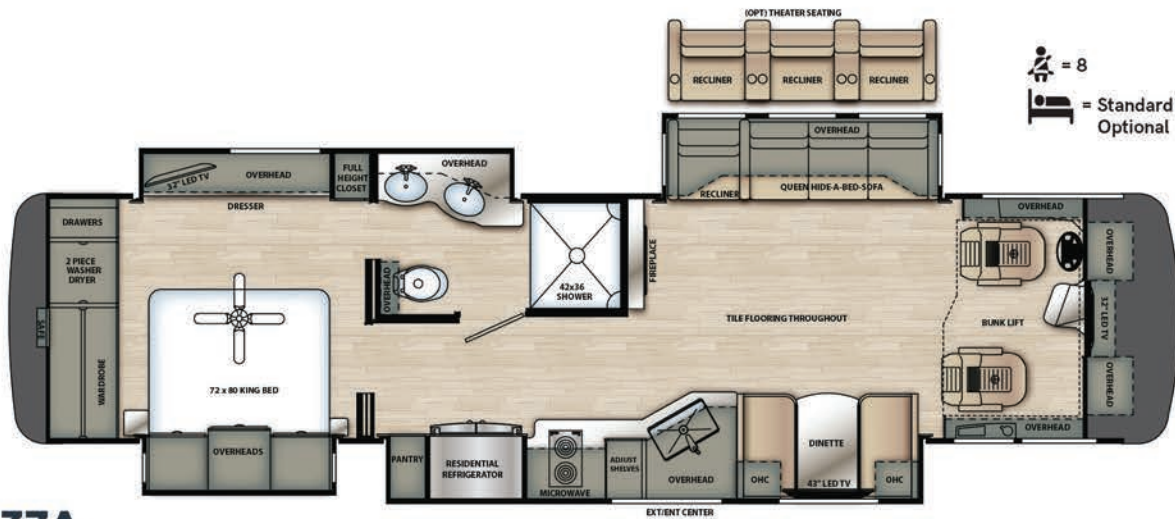
---

- + 49" LED TV, living room (N/A 37A, 40C, 40E)
- + 43" LED TV, living room (N/A 40D)
- + 43" LED TV exterior TV w/ bluetooth radio & speakers

- + 32" LED Smart TV, bedroom
- + 32" LED Smart TV in cockpit overhead
- + 22" LED Smart TV, (2) each bunk w/ easy access HDMI jack (N/A 37A, 40D)
- + JBL Soundbar w/ integrated sub & bluetooth
- + Roof mount Winegard Trav'ler satellite prep
- + Park/cable prep
- + High Definition Cat6 matrix signal distribution
- + Kicker dash radio tuned amplifier system
- + Auto WiFi extended range Falcon antennae & router
- + Hi-definition digital TV antennae
- + Blu-ray DVD Player

## OPTIONS

- + Free standing dinette w/ hutch and 4 chairs (N/A 37A, 40C, 40E)
- + Gold Heat electric heated living room & kitchen tile floors
- + Theater seating ilo of sofa
- + Ceramic no-gloss tile
- + Trav'ler (Winegard) satellite antennae - Dish Network TV (US)
- + Trav'ler (Winegard) satellite antennae - Shaw (Canada)
- + Stackable washer & dryer
- + Stainless steel dishwasher
- + Delete front bunk lift



= 8  
 = Standard 7  
 Optional 5

### 37A

- Under 40' Class A Diesel with 15K Towing Capability and Rear Disc Brakes
- Abundant Storage and Cargo Capacity
- Spacious Walk Through Bath Featuring 42" x 36" Shower
- Power, Drop-Down Cockpit Bed

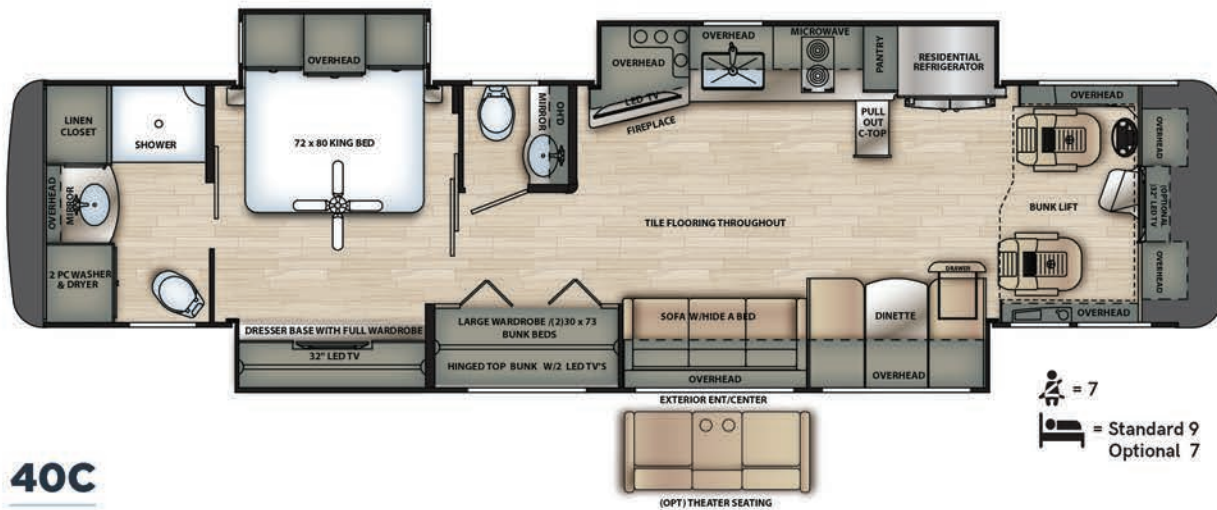


**37A      40C**

Length	38'8"	41'
GVWR (Lbs.)	38,320	38,320
GCWR (Lbs.)	53,320	53,320
GAWR Front (Lbs.)	14,320	14,320
GAWR Rear (Lbs.)	24,000	24,000
Wheelbase	238"	266"
Height*	12' 9"	12' 9"
Width*	100"	100"
Basement Storage*	185 ft <sup>3</sup>	220 ft <sup>3</sup>
Awning	17' 6"	18'
Fresh Tank*	103	103
Gray Tank	66 gal.	66 gal.
Black Tank	42 gal.	42 gal.
Hydronic Heat (BTU's)	40,000	40,000
Tankless Continuous Hot Water	S	S

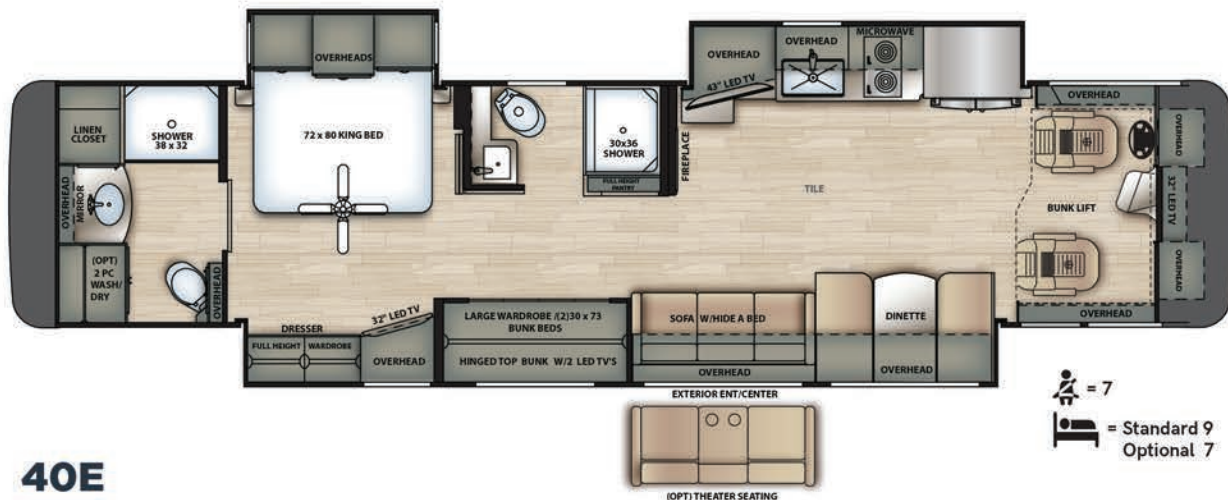
### 40C

- 1/2 Bath, Bunk or Increased Wardrobe Space
- Spacious Living Room with Abundant Kitchen Counter Space & Storage
- Full Wall Hydraulic Slide Out, Open Floorplan & Large Campside Awning
- Sleeps up to 9 People



= 7  
 = Standard 9  
 Optional 7

\*Fresh water tank includes quick drain valve  
Please see back cover for more information regarding weights.



	40D	40E
Length	41'	41'
GVWR (Lbs.)	38,320	38,320
GCWR (Lbs.)	53,320	53,320
GAWR Front (Lbs.)	14,320	14,320
GAWR Rear (Lbs.)	24,000	24,000
Wheelbase	266"	266"
Height*	12' 9"	12' 9"
Width*	100"	100"
Basement Storage*	220 ft <sup>3</sup>	220 ft <sup>3</sup>
Awning	15' 9"	18'
Fresh Tank*	103 gal.	103 gal.
Gray Tank	66 gal.	66 gal.
Black Tank	42 gal.	42 gal.
Hydronic Heat (BTU's)	40,000	40,000
Tankless Continuous Hot Water	S	S

\*Fresh water tank includes quick drain valve  
Please see back cover for more information regarding weights.



GVWR (Gross Vehicle Weight Rating) - is the maximum permissible weight of the unit when fully loaded. It includes all weights, inclusive of all fluids, occupants, cargo, optional equipment and accessories. For safety and product performance do NOT exceed the GVWR.

GCWR (Gross Combined Weight Rating) - Is the maximum permissible loaded weight of your motor home and any towed trailer or towed vehicle. Actual GCWR of this vehicle may be limited by the sum of the GVWR and the installed hitch receiver maximum capacity rating; see hitch rating label for detail.

GAWR (Gross Axle Weight Rating) - is the maximum permissible weight, including cargo, fluids, optional equipment and accessories that can be safely supported by each axle.

UVW (Unloaded Vehicle Weight)\* - is the typical weight of the unit as manufactured at the factory. It includes all weight at the unit's axle(s), including full fuel, all fluids and LP Gas. The UVW does not include cargo, fresh potable water, additional optional equipment or dealer installed accessories.

\*Estimated Average based on standard build optional equipment.

CCC (Cargo Carrying Capacity)\*\* - is the amount of weight available for fresh potable water, cargo, passengers, additional optional equipment and accessories. CCC is equal to GVWR minus UVW. Available CCC should accommodate fresh potable water (8.3 lbs per gallon). Before filling the fresh water tank, empty the black and gray tanks to provide for more cargo capacity.

\*\* Estimated average based on standard build optional equipment.

Each Forest River RV is weighed at the manufacturing facility prior to shipping. A label identifying the unloaded vehicle weight of the actual unit and the cargo carrying capacity is applied to every Forest River RV prior to leaving our facilities.

The load capacity of your unit is designated by weight, not by volume, so you cannot necessarily use all available space when loading your unit.

Actual towing capacity is dependent upon your particular loading and towing circumstances, which includes the GVWR, GAWR and GCWR as well as adequate trailer brakes. Please refer to the Operator's Manual of your vehicle for further towing information.

All information contained in this brochure is believed to be accurate at the time of publication. However, during the model year, it may be necessary to make revisions and Forest River, Inc., reserves the right to make all such changes without notice, including prices, colors, materials, equipment and specifications as well as the addition of new models and the discontinuance of models shown in this brochure. Therefore, please consult with your Forest River dealer and confirm the existence of any materials, design or specifications that are material to your purchase decision.




### PRE-DELIVERY INSPECTION FACILITY

20,000 square feet of quality assurance. The bare essentials for a premium product. This state-of-the-art facility gives immediate daily feedback to production for quality assurance in every unit built.

**24/7 EMERGENCY  
ROADSIDE ASSISTANCE  
WITH VEHICLE PURCHASE\***

<p>TOWING JUMP-STARTS TIRE CHANGES FLUID DELIVERY LOCKOUT SERVICE</p>	<p>WINCH-OUT MOBILE MECHANIC TECHNICAL SUPPORT DEALER LOCATOR SERVICES</p>
---	--



\*VALID FOR 1 YEAR FROM DATE OF PURCHASE

**CUSTOMER SATISFACTION**



[www.ForestRiverBuyLocal.com](http://www.ForestRiverBuyLocal.com)



#### Learn More

Scan this barcode using a QR Reader on your smart phone to learn more about Forest River.



A Berkshire Hathaway company.

Forest River Diesel Division  
1800 W. Hively Ave.  
Elkhart, IN 46517  
(574) 522-3693  
[www.forestriverinc.com](http://www.forestriverinc.com)  
[www.forestriveraccessories.com](http://www.forestriveraccessories.com)

**FREE MEMBERSHIP**  
to Forest River Owners' Group

  
[www.forestriverfrog.com](http://www.forestriverfrog.com)