

We are performing legend, and legend is performing us.

IPHIGENIA AND OTHER DAUGHTERS

by Ellen McLaughlin

Streamed virtually on November 13th & 14th, 2020 at 7pm.

Register for free tickets by visiting una.edu/theatre



College of
ARTS and SCIENCES
University of NORTH ALABAMA

School of the Arts  Cinematic Arts and Theatre

For more information visit una.edu/theatre or call 256.765.4559

School of the Arts  Cinematic Arts and Theatre

EARN A BFA IN CINEMATIC ARTS AND THEATRE AT UNA

*Concentrations In:
Film Production
Acting for the Stage and Screen
Theatre Design and Tech*



For more information
visit: www.una.edu/cat | 256.765.4177
FB: @UNACinematicArtsandTheatre



Iphigenia and Other Daughters

by Ellen McLaughlin

STREAMED VIRTUALLY ON

Friday, November 13, 2020 | 7:00 p.m.

Saturday, November 14, 2020 | 7:00 p.m.

SYNOPSIS

This three-play cycle is a modern retelling of the fall of the House of Atreus. It follows the children of Clytemnestra and Agamemnon, siblings who are both players in the family tragedy and victims of it. Agamemnon sacrifices his oldest daughter, Iphigenia, for favorable winds to sail off to the Trojan war. When he returns, his wife, Clytemnestra avenges her daughter's death by murdering Agamemnon on the family hearth. Orestes, Electra and Chrysothemis are left to sort out their own ideas of justice, as they grapple with the decision to break or perpetuate their family's cycles of violence and trauma. They're forced into these roles by birth and the siblings must decide if they'll continue to play their part, or simply refuse to perform.

DIRECTORS NOTE

Iphigenia and Other Daughters focuses on the often peripheral characters of Greek mythology- the children and wives of great heroes. This play examines legacy, familial obligation and self-determination. Each of these characters inherits a "role" in their family drama and are bound by duty to play their parts. I think now, more than ever before, it is important to look with a critical eye toward the way things have always been and what obligation we have to uphold or break patterns of the past.

Thank you for joining us for UNA's first ever virtual theatre performance.

Iphigenia and Other Daughters

by Ellen McLaughlin

CAST

ACT 1: *Iphigenia in Aulis*

Clytemnestra Mary-Maggie Stewart
Iphigenia Amanda Sánchez-Sandoval

ACT 2: *Iphigenia in Aulis*

Electra Alexandra Perez
Clytemnestra Jeanne Baughmann
Chrysothemis Kellee Willis
Orestes Freddie Carodine

Act 3: *Iphigenia in Tauris*

Iphigenia Emma Higby
Chorus Keairria Hall
Chorus Mary Moore
Chorus Deyanara Holt
Orestes Konner Bendall

The show runs approximately 1 hour and 20 minutes,
including a 5-minute intermission between Acts 2 & 3.

CREW AND CREATIVE TEAM

Director Keelie Sheridan*
Designer Vince Salpietro*
Wardrobe Assistant Amanda Perry*
Sound Designer Chip Bailey
Sound Technician Sean McDonald
Production Assistant Tori Hebert
Stage Manager Hailey Drake

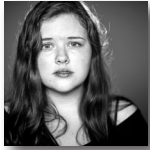
Special thanks to the Norton Crew: Kayla Manzollilo* (Norton Auditorium Technical Director),
Ethan Franks* (Technical Assistant), Chip Bailey, Jaimy Murff

*Denotes University of North Alabama Faculty & Staff

OTHER SPECIAL THANKS

Jorge Luna Photography
Anna Eastep Gibson
Mitchell Moon
Chet Miller
Vanessa Borelly Vega
Michael Curtis Johnson
Christy Koger
Jessica Bailey
Dr. Terrance Brown
Dr. Meghan Merciers
Dr. Jeffrey Bibbee
Dr. Sara Lynn Baird
Dr. Kenneth Kitts

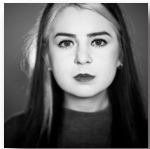
CAST



Amanda Sánchez-Sandoval (Iphigenia) has grown up in a home full of art, so she's been acting, singing, and performing since birth. Amanda officially started her studies in performing arts at Conservatorio de Castella in 2007. During her time there, she participated in multiple productions such as *Pinocchio*, *Caperucita Encarnada* (red riding hood adaptation, lead) and *Midsummer Night's Dream*. Amanda has also worked with Skene Foundation for more than 10 years, appearing in multiple holiday themed shows as well as original productions including the short film *Juegos de Manos* directed by Amaral Sanchez in 2011.



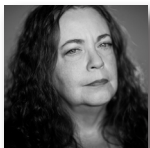
Mary-Maggie Stewart (Clytemnestra) is a senior majoring in Cinematic Arts and Theatre with a concentration in Acting for Stage & Screen. She has performed in shows including *Sylvia*, *Commencing*, *West Side Story*, *Little Shop of Horrors*, *Best Little Whorehouse in Texas*, and *It's a Wonderful Life: The Live Radio Play*. She has acted in films for WarTorn Productions, UNA students, and Mooneye Productions — including Joey Gettings' "Blame it on the Whiskey" music video. She would like to send love and thanks to her mom, Shelley Stewart, for her never-ending love and support.



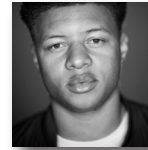
Alexandra Perez (Assistant Director/Electra) is a senior majoring in Cinematic Arts and Theatre with a concentration in Acting for Stage & Screen. She has performed at UNA as Emmy (*A Doll's House, Part 2*), The Boy (*Waiting for Godot*), Helene/Kristine (*A Doll's House*), Natalia (*A Marriage Proposal*), and Fleance (*Macbeth*). Additionally, Alexandra has performed in *The Vagina Monologues* with UNA's Women's Center. Her favorite role outside of UNA has been Kayleen (*Gruesome Playground Injuries*). Alexandra also co-produced and co-directed *Gruesome Playground Injuries* with Seagull Productions.



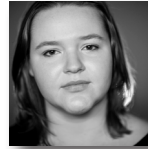
Kellee Willis (Chrysothemis) is a Senior at The University of North Alabama pursuing a BA in Theatre with a concentration in acting. She is Vice-President of TAC (Theatre Arts Club) and Vice-Chair of the SOTA Student Leader Board. Some of her acting credits include *The Curious Savage*, *Blind Date*, *Hairspray*, *Little Shop of Horrors*, *It's a Wonderful Life: A Live Radio Show* and many others.



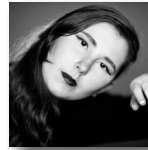
Jeanne Baughman (Clytemnestra) has performed a variety of character roles with UNA Theatre since 2012, notably Anne Marie in *A Doll's House, Part 2*, Porter in *Macbeth*, Nurse in *Medea*, and Dottie in *Good People*. She has also served as a dramaturg for UNA Theatre productions. Jeanne has appeared in several UNA Cinematic Arts film productions, notably as Lynette in *Scenes From Der Vaffle Burg*. She is seeking a post-baccalaureate BFA in Cinematic Arts and Theatre.



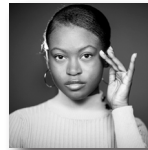
Freddie Carodine (Orestes) is a Senior at UNA. This will be his first production with the UNA theater program. He has been a part of multiple short films produced by the Cinematic Arts program.



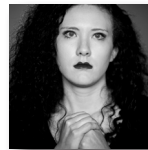
Emma Higby (Iphigenia) is a Sophomore at UNA and is performing in her first UNA theatre production. Before performing at UNA, she performed with the Wetumpka High Theatre Guild at Wetumpka High School, the Alabama Shakespeare Festival, and the Alabama Dance Theatre. Emma plans to graduate in Spring 2023 with her BFA in Cinematic Arts and Theatre with a concentration in acting, and a musical theatre certificate. She is very excited about this performance and she hopes that everyone enjoys it!



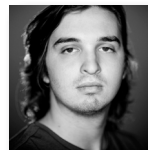
Deyanara Holt (Chorus) is a Freshman at UNA and is performing in her first UNA show. She has played in many performances since high school. She featured in the Alabama premier of *Tuck Everlasting*, performed by the Grissom High School's Musical cast. She hopes you all enjoy *Iphigenia and Other Daughters*.



Keairria Michelle Hall (Chorus) is a junior at the University of North of Alabama majoring in Cinematic Arts and Theatre with a concentration in technical design. She's a graduate from Pleasant Grove High School where she first started designing and acting for theatre, working as actor and design assistant for *Peter Pan Jr.* This is Keairria's first show with UNA theatre.

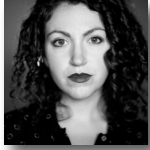


Mary-Elizabeth Moore (Chorus) is a junior at UNA in the Cinematic Arts and Theatre program, with a concentration in technical design. She is from Red Bay, Alabama, where she has served as the board secretary for the town's community theatre Bay Tree Council for the Performing Arts. She has over 20 acting credits at the community level, including *12 Angry Men* as Juror #4, *Arsenic and Old Lace* as Dr. Einstein, and *The Miss Firecracker Contest* as Carnelle. She was slated to play Romaine in *Witness for the Prosecution* last spring pre-COVID. Mary is a 2020 graduate of Itawamba Community College in Fulton, Mississippi.



Konner Bendall (Orestes) is pursuing a degree in the Cinematic Arts and Theatre program with a concentration in acting. He has acted in UNA's *Picasso at the Lapin Agile*, *Eurydice*, *Hairspray*, *Macbeth*, *It's a Wonderful Life: The Live Radio Play*, and *Waiting for Godot*.

CREW AND CREATIVE TEAM



Keelie Sheridan (Director) is Visiting Assistant Professor of Acting & Directing in UNA's Cinematic Arts & Theatre Program. She has performed in world premieres and reprised works by playwrights including Charles Mee, Ben Gassman, Paul Ketchum, and Mac Wellman in various New York venues, including The Public, Dixon Place and 3LD. As Producing Artistic Director of The Ume Group, Keelie received a 2018 New York Innovative Theatre Award Nomination for Outstanding Movement and Choreography. Keelie's directing and producing credits include *The Lab* at Grace & St. Paul's, *UNFIX NYC*, *The Terry Schreiber New Works Initiative* and *The Schreiber Shorts*, and immersive installations and performance art pieces with Chashama NYC and Creative Time. She recently finished her first feature film, *planet b234*. MFA Acting- Brooklyn College, MFA Directing (Trinity College Dublin/ The Lir- Mitchell Scholar).



Vince Salpietro (Designer) is Assistant Professor of design & technology in UNA's new Cinematic Arts & Theatre Program. Vince is an MFA graduate in Production Design & Technology from Ohio University, where his design credits include *The Library*, *Middletown*, *The Skin of Our Teeth* and Brick Monkey Theater Ensemble's *Annapurna*. Vince has also worked as backdrop designer for Enchantment Theatre Company, charge artist for Tantrum Theater, and scenic art apprentice at the Santa Fe Opera. See more at VinceSalpietro.com.



Amanda Perry (Wardrobe Assistant) is an adjunct professor of Theatre at UNA and is Artistic Director of Historic Zodiac Playhouse in Florence. She earned her BA in Theatre from UNA and an MFA in Directing from the University of Memphis. She received the 2019 Stanley Award for Outstanding Actress in a Featured Role for her performance in *The Glass Menagerie*. Most recently she co-wrote and directed *Love, or Something Like It* at The Z in Florence. Other recent directing and performance credits include *Bloodless: The Lizzie Borden Mystery*, *Grease*, *The Belles of Whitechapel*, *Death by Chocolate*, and *Language of Angels*.



Chip Bailey (Sound Designer) is a Senior currently enrolled at the University of North Alabama in the Cinematic Arts and Theatre program with a concentration in technical design. He has been a crew member on the Norton technical staff since the Fall semester of 2013. Chip has assisted with technical aspects in shows by the UNA Theatre program such as *Picasso at the Lapin Agile*, *The Mountaintop*, *Eurydice*, *A Lesson before Dying*, *Waiting for Godot*, and *A Doll's House, Part 2*. He has also assisted in technical aspects and acted in UNA Theatre performances such as *Hairspray*, *Macbeth*, *Little Shop of Horrors*, and *A Doll's House*.



Sean McDonald (Sound Technician) is a sophomore at University of North Alabama. This is Sean's first production with the UNA theatre program. He has worked as both an actor and technician for the Sylacauga Community Playhouse. Acting credits include Pugsley Addams in *The Addams Family* and Porter in *Tarzan*. Technical credits include Sound Designer for *The Miracle Worker*, Sound Designer for *The Adventures of Tom Sawyer*, and Technical Director for *The Secret Garden*. Sean is also part of the audiovisual department at Shocco Springs Conference Center in Talladega, Alabama.



Tori Hebert (Production Assistant) is a Sophomore at University of North Alabama, majoring in Cinematic Arts and Theatre with a concentration in technical design. This will be her first official production with the UNA theatre program. She was a paint manager at her high school where she worked on productions such as *Peter Pan* and *Charlotte's Web*.



Hailey Drake (Stage Manager) is a second year major in the Cinematic Arts and Theatre program at UNA. She has previously worked as stage manager for UNA's production of *A Doll's House, Part 2*. Hailey is so proud of our actors and crew for working so hard on this show!



 **SCHOOL OF THE
ARTS**
University of NORTH ALABAMA

*Ignite Your Passion
for the Arts*

Cinematic Arts & Theatre • Music • Visual Arts & Design
arts@una.edu | una.edu/schoolofthearts | 256.765.4559
128 W. Tombigbee St.
Florence, AL 35630

  
@unasota @una_sota @unasota

School of *the* Arts  Cinematic Arts and Theatre

For more information

visit: www.una.edu/cat | 256.765.4177

FB: @UNACinematicArtsandTheatre



College of
ARTS and SCIENCES
University of NORTH ALABAMA