

# 2019 Acme Services Guide







# CORE Services

## Engineering & Design, Technical Sales

4-5

Strut systems  
 Seismic bracing  
 Steel Fabrication  
 Insulated pipe supports  
 Custom fabricated pipe supports

## Safety Compliance, Training & Jobsite PPE

6-7

Fall protection awareness  
 certification  
 Competent person training  
 Safety Solutions  
 Silica dust control  
 Rescue & retrieval  
 more...

## Rentals & Repairs

8-9

Rental categories  
 Lease-to-own  
 Flat-rate repairs  
 more...

## Inventory Management Solutions

10

Acme-managed inventory  
 Self-managed inventory  
 Safety station services  
 more...

## acmetool.com

11

Account management  
 Product /order management  
 Account review  
 more...

# Engineering & Design

## STRUT SYSTEMS



Acme offers a complete design, engineer and prefab solution for the most complex projects. Because of our 60 year relationship with brands like Superstrut, B-Line and Unistrut, Acme has the most flexible capability and product offering focused on the western states.

**Ceiling grids**

**Data center ceilings & racking**

Projects Include: Facebook, Apple, Google

**Medical supports**

**Catwalks**

**Elevated platforms**

**Hightech/cleanroom supports**

Projects Include: Intel, USC, DMEA, Micron

**Trapezes**

**Strut racking support**

**Dividing walls**

## SEISMIC BRACING



Whether you need rigid or prefer cable seismic bracing components, Acme will provide you with an easy to install system to comply with seismic requirements and building codes.

Utilizing products by Tolco/B-Line, Grippler & Badger Industries.

**Cable trays**

**Conduit/pipe racks**

**Ductwork**

**HVAC equipment**

**Pipe bracing**

**Lighting**

**Acoustical cloud ceilings**

## ENGINEERING



Our engineering team is licenced in all 50 states and can collaborate on projects of all sizes. We have multiple designers specializing in the following systems:

**Seismic bracing**

**Strut supports**

**Acoustical ceilings**

**Transformer racks**

**Vibration isolation**

**Equipment anchorage**

**Wall-mounted**

**Floor-mounted**

**Suspended**

**Acme Technical Sales**

☎ 971-200-8855

✉ [technicalsales@acmetool.com](mailto:technicalsales@acmetool.com)

# Steel Fabrication

## CUSTOM FABRICATED PIPE SUPPORTS



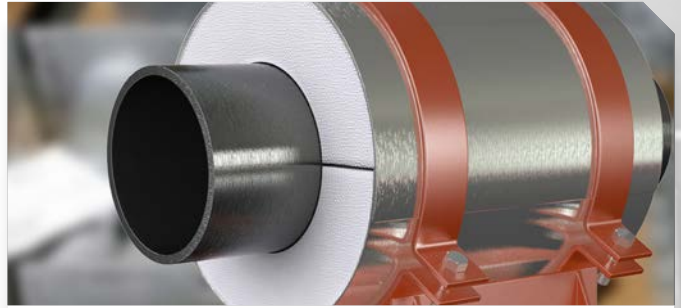
Acme manufactures pipe supports of all types, sizes, shapes and requirements including multiple finishes such as SS304/316, HDG (Hot Dip Galvanized) and FRP (fiberglass). With our engineering capabilities no support requirement is too large or complex.

Projects Include: Civil/public works, waste water treatment plants, clean water services, schools, public buildings, and more.

### Acme Fabrication

☎ 916-386-1769

✉ [acmefabproducts@acmetool.com](mailto:acmefabproducts@acmetool.com)



A full spectrum of commercial -grade pre-insulated pipe supports (hangers, slides, guides, anchors, risers, custom designs available) made from ASBESTOS FREE calcium silicate. The calcium silicate is treated for water resistance and incased in a 360 degree A-527 galvanized sheet metal jacket.



### DOWNLOAD THE CATALOG

[www.insulatedsupports.com](http://www.insulatedsupports.com)

### Insulated Supports

☎ 855-254-6730

✉ [www.insulatedsupports.com](http://www.insulatedsupports.com)

## WORKFLOW

### PRE-BID

Take offs, plan interpretation, value engineering, pre-design, lump-sum bids

### PRE-CONSTRUCTION (POST-AWARD)

Engineering design

2D drawings

Shop drawings

Erection drawings

3D drawings

BIM modeling & coordination

AutoCAD, Revit, Navisworks, BIM 360, SolidWorks

Isometric drawings

Installation drawings

Submittal drawings

### CONSTRUCTION

Pre-fabrication

Strut cutting

Pre-assembled fittings

Trapezes & racking complete assemblies

Ceiling & racking sub-assemblies

Custom strut configurations

Phased material delivery

On-site support

Field engineers in all regions

Project completion inspections

Expert customer service

Project management support

BIM changes

Detail drawing updates

Scheduling changes

Expedited materials



# Safety Classes



## FALL PROTECTION AWARENESS TRAINING

Introduce your workers to the world of fall protection

Our Fall Protection Awareness training is designed to introduce you to the world of fall protection. Our highly trained and experienced instructors will come to your place of business, conduct lectures, demonstrate the proper adornment and use of fall protection equipment.

This class is an excellent option to familiarize the unaffiliated with general uses of fall protection equipment. Acme Construction Supply & Portland Fasteners are committed to spreading knowledge about the importance of fall protection, and is proud to provide training, whether basic or complex in nature, to all workers.

Satisfies requirements for OSHA's §1926.503 on Safety and Fall Protection standard.

**1-Hour** Ask your sales representative for details.

### COMPETENT PERSON TRAINING

A 2-day course designed to train students in the best practice methodology in order to identify & eliminate fall hazards.

**2-Days** Ask your sales representative for details.

### COMPETENT PERSON REFRESHER

A 1-day course designed for those individuals who are currently responsible or assigned as a competent person within their organization.

**1-Day** Ask your sales representative for details.

### RESCUE & RETRIEVAL TRAINING

A 1-day course designed for those responsible for writing or monitoring a fall protection plan, or is an on-site Authorized Rescuer or Competent Rescuer.

### LADDER SAFETY TRAINING

Ladder safety training is available onsite and from one of our Acme training facilities. Ask your sales person to learn more.

### EGRESS & ACCESS TRAINING

Ask your sales representative for details.

### GAS / AIR SAMPLING TRAINING

Ask your sales representative for details.

### SILICA DUST CONTAINMENT

Ask your sales representative for details.

### ARK FLASH BY CEMENTEX

Ask your sales representative for details.

**Brian Petrucci**

Director of Training and Development

☎ 503-939-4312

✉ brianp@acmetool.com

**Jeff Johnson**

Northwest Region Safety Director

☎ 503-239-5230

✉ jeffj@acmetool.com

**Tom Holman**

Southwest Region Safety Director

☎ 408-383-9266

✉ tomh@acmetool.com

# Safety Solutions

## SILICA DUST PROTECTION

### Are you compliant? Find Silica Solutions. We've got your Silica Table 1 Compliant Solutions!

With the new OSHA standards in place, Acme helps make sure your jobsite is compliant and workers are protected. Acme has a wide-range of Table 1 compliant inventory from Bosch, DeWALT, Makita, Milwaukee, Sundstrom & 3M.

Table 1 compliant inventory



Dedicated silica compliance system consultant on staff



Manufacturer supported silica training



Give us a call for more details.

## JOBSITE SAFETY STATIONS

### SAFETY STATION JOBSITE PPE PROGRAM

Acme's custom safety station offers a comprehensive suite of head-to-toe safety solutions and is ideal for organizations that are looking for better inventory management for PPE

**FREE Acme storage cabinet with qualifying order [\$500 value]**

**Acme managed inventory**

**Free Delivery and stocking service**



Compact option  
42" x 36" x 18"



Standard option  
72" x 36" x 18"

## SAFETY RENTALS



Acme houses a large variety of safety-related rentals including certified gas detection meters and confined space retrieval kits.

### RELATED SERVICES

RKI CALIBRATION

SEE PAGE 6 FOR DETAILS



# Rentals & Repairs

## RENTAL EQUIPMENT

FREE LOCAL  
PICKUP & DELIVERY

NO FREIGHT CHARGES FOR  
RENTAL OF 2 OR MORE MONTHS

**NO DEPOSIT  
REQUIRED**

**NO CHARGES FOR DOWNTIME  
DAILY, WEEKLY,  
& MONTHLY RATES**

EXPEDITED REPAIRS  
OR REPLACEMENT

SHIPPING DIRECT TO YOUR  
REMOTE JOBSITE IS AVAILABLE

acme

BURNDY

DEWALT

GREENLEE

Milwaukee



Southwire

RKI

Husqvarna

### CABLE PULLING EQUIPMENT

- Pullers
- Sheaves
- Feeders
- Grip sets
- Jack stands
- Duct rodders
- Fishing vacuums
- Safety trigger systems

### CABLE TERMINATIONS

- Cable cutting
- Crimping (die-less & u-die solutions)

### CONDUIT FABRICATION

- Hydraulic & electric benders
- Hot boxes & blankets
- Metal cutting
- Threaders

### HOLE MAKING EQUIPMENT

- Cordless knockouts
- Mag drills

### CONCRETE CUTTING & DRILLING

- Core drills
- Diamond bits & blades
- Breakers and rotohammers
- Carbide bits & hole saws
- Concrete cutting saws (gas & electric)

### SAFETY

- Air monitoring equipment
- Confined space retrieval systems
- Confined space ventilation equipment

### JOBSITE EQUIPMENT

- Temp power
- Temp lighting
- Radios
- Storage boxes
- Air compressor
- Air moving equipment
- Switch gear dolly

### MISC TOOLS

- Power tools
- Lasers
- P.A.T tools
- Cordless gas nailers





# Rentals & Repairs

## REPAIR SERVICES

Acme Construction Supply offers a wide variety of repair and maintenance solution to help you get the most out of your equipment. Ask your sales representative for more information or contact us below.



### LEASE-TO-OWN PROGRAM

Ask us about our lease-to-own program on all popular equipment.



### BIT & BLADE SHARPENING

Pricing and location availability may vary. Ask your sales representative how we can help.

### FLAT-RATE\* REPAIRS ON LIFELINES

Servicing and inspection of mechanical fall protection devices, such as Self Retracting Lifelines (SRL's) are important requirements in any effective safety program. The frequency of the servicing/inspection as well as who should perform these activities are critical issues. Acme Construction Supply's position is a proactive one: work with customers to make servicing and inspection more convenient and economical, and maintain the highest level of safety.

\*Rates vary by manufacturer



### RKI RECALIBRATION & SENSOR REPAIR



Tanya Pavlica

Acme Rentals Division

☎ 1-800-255-9987 x5336

✉ rentals@acmetool.com

# Inventory Management Solutions

Acme's inventory management solutions is a 24-7-365 solution to the last one was used and no one said anything problem. As labor costs rise, effective time and material management can determine project profitability. Acme's Aims program has the flexibility to tailor an inventory solution to fit your specific need that will keep your project on track.



Improve accuracy - Faster processing - Usage reporting

1

## PLAN AHEAD. AVOID STOCK-OUTS.

As a preferred supplier to contractors since 1953, Acme has the archive of knowledge to help design an inventory to fit your project. Acme's aims has the means to make sure those products are on site when you need them.



Consumables



PPE / Safety



Fittings/Clamps



Hardware



Caddy

2

## STORAGE SOLUTIONS

Acme is the contractors choice for storage solutions. Whether it's additional warehouse shelving, locking storage, or shipping containers Acme can provide a resolution.



3

## EASY TO MANAGE

Our innovative Acme **StockRoom** application allows easy bar code scanning, quick product searches, and fast order entry and review. So regardless if you or Acme manage the site inventory, the result will be simple efficiency.

4

## THE POWER OF (INTELLIGENT) DATA

Acme knows the need for the authorized order approval process and detailed purchase order reporting. Our investment in technology and custom reporting provides solutions to most needs.

Acme is committed to your projects success. Working together we'll determine your inventory needs, build a solution that fits your business and get your people and project up and successful.



48-32-5030  
SHOCKWAVE 1/4" HEX SHANK T  
1/4" SOCKET ADAPTER

44-39-0521  
44-7/8" 18TPI PORT A BAND SAW  
BLADE 3 PACK



We designed and built www.acmetool.com to support our contractor customers. From our easy to search product and flexible site settings, acmetool.com is designed to fit your business needs.

## ACCOUNT MANAGEMENT

Manage & create ship to addresses

User management: add and limit user access

Pay invoices online

PCI compliant site

## PRODUCT AND ORDER MANAGEMENT

Customer part numbers: label items with your own part numbers

Product groups: quickly create & manage favorite items in groups.

My saved carts: do you repeatedly buy items together in the same or different quantities? Create lists and easily rebuy when you need.

Reorder pad: Your quick list of items purchased in the last 6 months.

Non-stock or special order form

Search for product and check our inventory

## ACCOUNT REVIEW

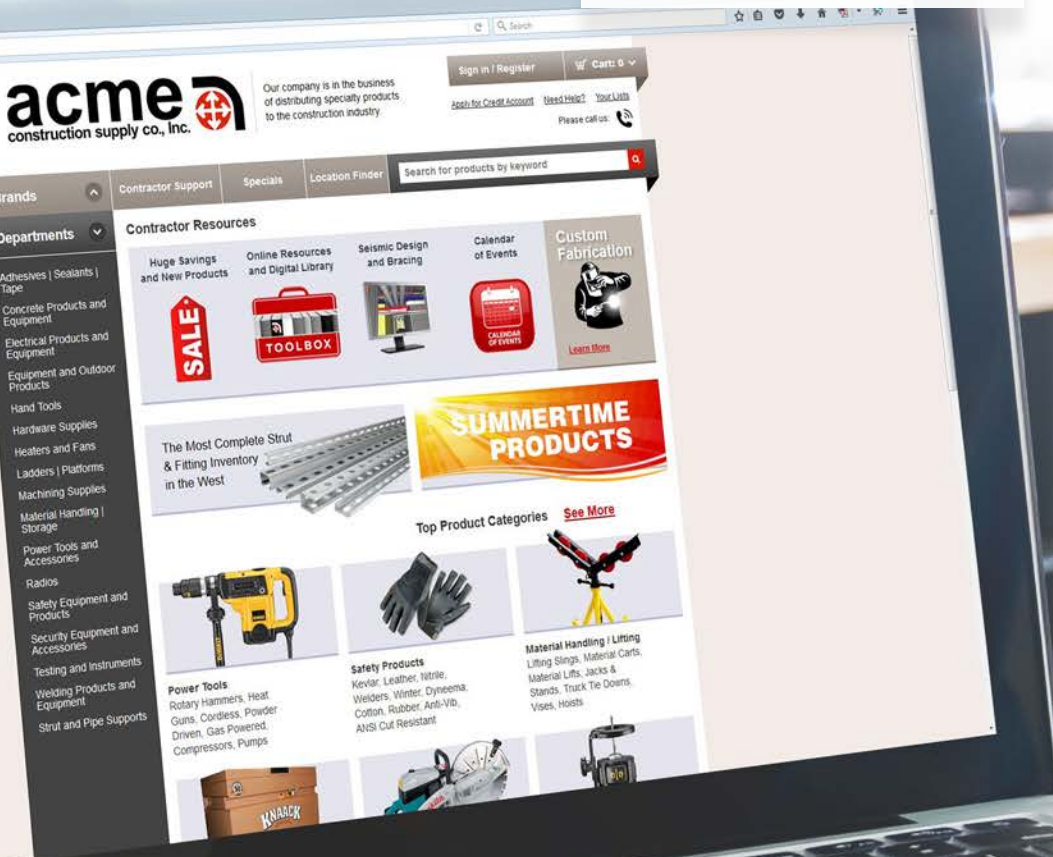
Pending Orders: Orders that require approval

Search Open or Shipped Orders By Product, PO, Release Number, Date, Your Part Number and more

Account Inquiry

Monthly Statement

Export your account information



## Go Mobile



# BRANCH LOCATIONS

## Washington

### Seattle Branch

4747 1st Avenue South  
Seattle, WA 98134  
206-464-1480

Monday-Friday:  
6:30am to 4:30pm

### Kent Branch

20476 84th Ave South  
Kent, WA 98032  
206-957-8280

Monday-Friday:  
6:30am to 4:30pm

### Tacoma Branch

305 S Tacoma Way  
Tacoma, WA 98402  
253-830-5724

Monday-Friday:  
6:30am to 4:30pm

### Quincy Branch

831 F Street SE  
Quincy, WA 98848  
509-797-8301

Monday-Friday:  
7:00am to 5:00pm

## California

### San Francisco Branch

1650 Evans Ave  
San Francisco, CA 94124  
415-920-2810

Monday-Friday:  
6:00am to 4:00pm

### Milpitas Branch

1001 Yosemite Drive  
Milpitas, CA 95035  
408-383-9266

Monday-Friday:  
6:00am to 5:00pm

### Sacramento Branch

26 Light Sky Court  
Sacramento, CA 95828  
916-388-7800

Monday-Friday:  
6:00am to 4:00pm

### La Mirada Branch

15020 Desman Road  
La Mirada, CA 90638  
562-946-1808

Monday-Friday:  
6:00am to 4:00pm

## Nevada

### Sparks Branch

605 Glendale Avenue  
Sparks, NV 89431  
775-331-3451

Monday-Friday:  
7:00am to 4:00pm

## Oregon

### Portland Branch

330 SE Salmon St  
Portland, OR 97214  
503-239-5230

Monday-Friday:  
7:00am to 5:00pm

### Hillsboro Branch

4837 NW 235th Ave  
Hillsboro, OR 97124  
503-648-8420

Monday-Friday:  
6:00am to 5:00pm

## Arizona

### Mesa Branch

232 S Mulberry St  
Mesa, AZ 85202  
480-398-4770

Monday-Friday:  
6:30am to 4:30pm

## Fabrication

### Acme Fabrication

26 Light Sky Court  
Sacramento, CA 95828  
916-386-1769

