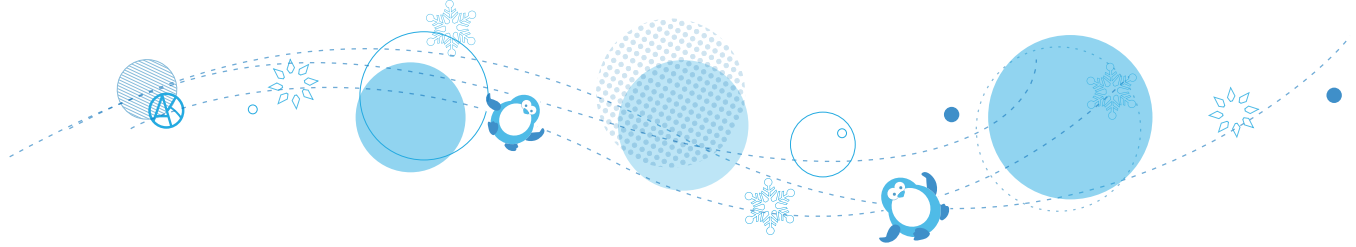


# AllaKoval

Crochet Couture for Kids 2-12 *designs*







# Meringue Cowl

Lightweight and delicate as meringue dessert, this cowl makes most enjoyable treat. Luxurious and chic, versatile and playful, this delicacy of a cowl is hand-knitted in wool and silk blend yarn. The cowl features an airy brioche stitch pattern and adorned with crocheted band. Stretchy, cozy, and generously sized, it has a beautiful drape, and can be looped around your neck twice for extra warmth.

Treat yourself of a loved ones to this delightful winter! Opt for bamboo or cotton blends for fall and spring accessory.

## Yarn

**Dk weight (#3 Light).**

**Shown:** Cascade Yarns Venezia Sport (70% merino wool, 30% silk; 307.5 yd [281 m]/3.5 oz [100 g]): **1** (**2**, **2**) hank(s) of #101 white heaven.

## Needles & Crochet Hook

Needles: size US 5 (3.75 mm); US size 8 (5 mm)  
Crochet hook: size E/4 (3.5 mm)

## Notions

- Tapestry needle for weaving in ends

SKILL LEVEL  EASY

## Sizes

**Small/Toddler** (**Medium/Child**, **Large/Adult**)

## Finished Measurements

Approx. **5.5** (**8**, **10**)" (**14** [**20.5**, **25.5**] cm) wide x **40** (**46**, **56**)" (**101.5** [**117**, **142**] cm) long

**Note:** Sample shown made in **Large/Adult** size but 40" (101.5 cm) long—360 yd [329]/4 oz [117 g] of yarn


## Gauge

18 sts x 28 rows = 4" (10 cm) in Brioche patt.  
Gauge is not critical for this design.

## SPECIAL STITCHES AND NOTES

### BRIOCHE

In European books it is known as English Rib, while in American books it is called Shaker knitting or more modern name - Brioche. One needs to approach brioche knitting with an open mind, with a different mindset than regular knitting and has some rules.

**Note:** Sure you can google “Brioche knitting” to find free video tutorials. But if you want to learn everything about this lovely stitch, I would highly recommend [Brioche knitting basics and beyond with Faina Goberstein during this knitting webinar](#). 

### Brioche Knitting Rules

- Regard “sl1yo” as **one stitch**.
- Two worked rows = **One** counted row.
- In most cases, every other stitch is worked and the remaining stitches are slipped. This divides the knitting into two layers.

### Guidelines

- Brioche stitch works best on loose-fitting garments that require ease.
- Brioche knitting uses more yarn than Stockinette stitch—up to twice as much.
- When washing a brioche garment, stretching can become a problem because of the weight of the absorbed water. To counteract this, squeeze out as much water as you can while supporting garment, then wrap it in a thick dry towel, and tread on it to get out as much water as possible without stretching the garment. Then ease the garment back into its original shape and dry flat.

### Terminology

- The abbreviation **yo** means “yarn over needle”. It does not mean “yarn wrapped around needle” as in standard knitting. In brioche knitting **yof** means “yarn over needle and then to the front”, and in that case the yarn is indeed wrapped around the needle.
- All slipped stitches are slipped purlwise unless otherwise stated.

- The front of work is the side of the knitting facing the knitter and the back of the work is the side of the knitting away from knitter.

### Brioche Knitting Pattern

CO an even number of sts.

**Set-Up Row:** \*yf sl1yo, k1; rep from\* across.

**Row 1:** \*yf sl1yo, bk1; rep from \* cross.

Rep Row 1 for pattern.

### REVERSE SINGLE CROCHET (reverse sc):

Keeping hook pointing to the left, insert hook into next stitch to the right and pull up a loop, yarn over and pull through 2 loops (*see Tutorial on p. 7*).

### ABBREVIATIONS

BO - bind off

BRK - brioche knit, also known as a bark.

Knit the stitch that was slipped in the previous row together with its yarn over.

ch - chain

CO - cast on

dc - double crochet

dec - decrease(ing)

inc - increase(ing)

k - knit

kf&b - knit 1 st in the front, then 1 st in the back

p - purl

patt - pattern

RS - right side

sc - single crochet

sk - skip

sl - slip

sl1yo - slip stitch yarn over

sp - space

st(s) - stitch(es)

tog - together

WS - wrong side

wyif - with yarn in front

yo - yarn over (winding yarn around needle)

yf - yarn forward



## COWL

With smaller needles, CO 12 (18, 22) sts.

**Row 1 (RS):** p across.

**Row 2 (Inc row):** kf&b across—24 (36, 44) sts.

Change to larger needles and work in Brioche Knitting Pattern for 38 (44, 54)" (96.5 [112, 137] cm), ending with RS row.

**Next Row (WS):** Change to smaller needles, p across.

**Next Row (Dec row):** k2tog across—12 (18, 22) sts.

BO all sts. DO NOT cut yarn.

## CROCHETED BAND

Refer to Band Stitch Diagram below for assistance.

**Row 1 (RS):** With RS facing, working along BO edge of Cowl, insert hook from front to back at right corner of Cowl, pull yarn through to front, sl st to secure yarn; ch 1, work 13 (19, 23) sc evenly across, turn.

**Row 2:** Working in front loops only, ch 3 (counts as dc throughout), dc in next and each sc across, turn.

**Row 3:** Working in both loops, Ch 4 (counts as dc and ch-1), sk first and next dc, dc in next dc, [ch 1, dc in next dc] across, turn—7 (10, 12) dc and 6 (9, 11) ch-1 sps.

**Row 4:** Ch 3, [dc in next ch-1 sp, dc in next dc] across, turn.

**Row 5:** Ch 1, sc in first and each dc across, DO NOT turn.

**Rnd 6:** Working from left to right, ch 1, reverse sc (see *Special Stitches and Notes*) in each sc across. Fasten

off, leaving approx. 20" (51 cm) yarn tail.

## Finishing Border Edge

Refer to Band Stitch Diagram, p. <?> for assistance.

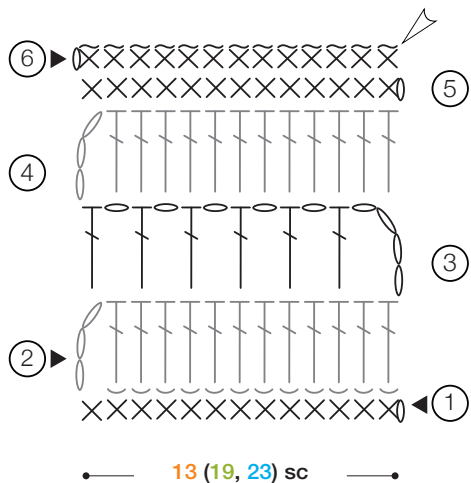
**Row 1:** With RS facing, working along Row 1 of Band from left to right in free loops, ch 1, reverse sc in each st across. Fasten off.

## FINISHING

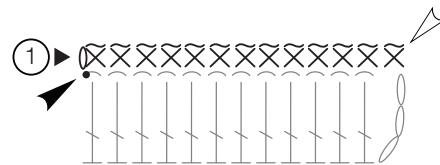
Pin Band edge to short edge of Cowl with RS facing (DO MOT twist); turn inside out and with tapestry needle and yarn tail, sew short edge of Cowl to Band edge.

With WS of Cowl facing, tapestry needle and leftover yarn, whipstitch short edges of Band.

## Band Stitch Diagram



## Finishing Border Edging Stitch Diagram



## Stitch Key

- - chain (ch)
- - slip stitch (sl st)
- × - single crochet (sc)
- ⊗ - reverse sc
- ⌒ - worked in front loop only
- ┆ - double crochet (dc)

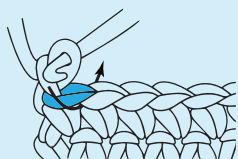
## Diagram Key

- ▶ - join yarn
- ⚡ - fasten off



# Special Stitches

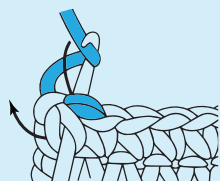
## REVERSE SINGLE CROCHET STITCH



1

Insert hook, from front to back, in the next stitch to the right.

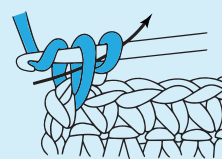
Be sure to have the right side of your work facing you.



2

Yarn over and draw yarn through stitch.

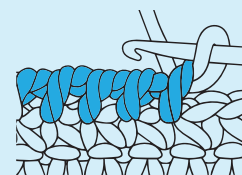
This step is similar to how you work a regular single crochet—only backwards.



3

Yarn over and draw yarn through 2 loops on hook.

One reverse single crochet is complete.













4

Repeat preceding steps in each stitch across row.

This image shows several completed reverse single crochet stitches.



# Conversion Chart

SYMBOLS	TERMS	
	 U.S.	 UK
	chain	chain
	slip stitch (sl st)	slip stitch (sl st)
	single crochet (sc)	double crochet (dc)
	half double crochet (hdc)	half treble crochet (htr)
	double crochet (dc)	treble crochet (tr)
	treble crochet (dtr)	double treble crochet (dtr)
	double treble crochet (dtr)	triple treble crochet (ttr)
	3-dc cluster	3-tr cluster
	fasten off	cast off
	skip/ skip over	miss
	gauge	tension
	yarn over	yarn over hook (yoh)



# Yarn Substitution Chart

Yarn Weight*	Ply UK/AU	Wraps per inch	Gauge in sc to 4" (10 cm)	Recommended Hook Sizes Range			
				Metric	 U.S.	 UK	UK
 Lace weight (#0 Lace)	3 ply	—	32—42** dc	1.6—1.4 mm	Steel*** 6, 7, 8 Aluminum B/1	Steel 3 1/2, 4, 4 1/2 Aluminum 13	
 Fingering weight (#1 Super Fine)	4 ply	14 wpi	21—32 sts	2.25—3.25 mm	B/1 to E/4	13 to 9	
 Sport weight (#2 Fine)	5 ply	12 wpi	16—20 sts	3.5—4.5 mm	E/4 to 7	9 to 7	
 Dk weight (#3 Light)	8 ply	11 wpi	12—17 sts	4.5—5.5 mm	7 to I/9	7 to 5	
 Worsted weight (#4 Medium)	10 ply	9 wpi	11—14 sts	5.5—6.5 mm	I/9 to K/10 1/2	5 to 3	
 Chunky weight (#5 Bulky)	12 ply	7 wpi	8—11 sts	6.5—9 mm	K/10 1/2 to M/13	3 to 00	
 Bulky weight (#6 Super Bulky)		5-6 wpi	5—9 sts	9 mm and larger	M/13 and larger	00 and larger	

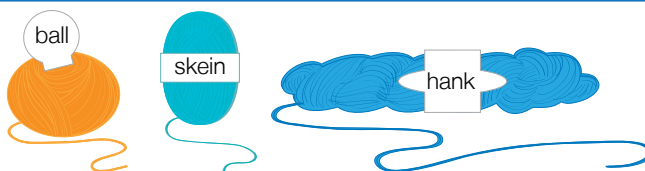


\* **GUIDELINES ONLY:** The above reflect the most commonly used gauges and hook sizes for specific yarn categories.

\*\* Lace weight yarns are usually knitted or crocheted on larger needles and hooks to create lacy, open-work patterns. Accordingly, a gauge range is difficult to determine. Always follow the gauge stated in your pattern.

\*\*\* Steel crochet hooks are sized differently from regular hooks—the higher the number, the smaller the hook, which is the reverse of regular hook sizing.

## Types of Yarn Packaging



**Ball:** Yarn, wrapped into a ball shape.

**Skein:** Yarn wrapped in loose twist. Yarn packaged as balls and skeins come ready to knit or crochet.

**Hank:** Yarn wound into a large circle and then folded. You need to wind hanks into a ball before use them.



I am a published knit & crochet designer of children's garments, womens accessories and patterns. My works appeared in several magazines, including *Crochet!*, *Crochet World*, *Interweave Crochet* and *Crochet Scene*.

I enjoy knitting and crocheting at my bright studio in Seattle, Washington, with my best helper—adorable tiny Chihuahua Pixie—on my lap. There I create happy-fashion designs by combining colors, textures and materials.

My own line of 100+ patterns and, published in July 2015, series of books **Imagical Seasons™**, came to light as a result of these experiments and aspirations.

Thank you so much for your interest in my patterns! Somebody else making something out of what I've created—*that's what makes me happiest!*

Please feel free to email me with any questions you may have or you need a help with my patterns at [allakoval@gmail.com](mailto:allakoval@gmail.com).

Sincerely yours,

*A. Koval*



---

All graphics, template and photos are copyrighted. All rights reserved. Please be respectful of the designer's rights to this pattern.

No portion of this work may be photocopied or reproduced by any means without written authorization from Alla Koval Designs.

Unauthorized distribution or duplication is a violation of applicable laws.

You are more than welcome to sell items made from AllaKovalDesigns™ patterns. Credit to the designer is greatly appreciated (example: pattern is designed by [www.AllaKovalDesigns.com](http://www.AllaKovalDesigns.com)) but not required.

To find more than 100 patterns available for instant download please visit my patterns stores: [MyLittleCityGirl.com](http://MyLittleCityGirl.com), [Etsy](http://Etsy), [Ravelry](http://Ravelry), [Craftsy](http://Craftsy) and [Dawanda](http://Dawanda).

Alla Koval Designs™ also publish **Imagical Seasons™** pattern book series available in paperback, digital and Kindle formats! The books can be found at [ImagicalSeasons.com](http://ImagicalSeasons.com), [Etsy](http://Etsy), [Ravelry](http://Ravelry) and [Amazon](http://Amazon).

© 2015 Alla Koval Designs™, Inc.