

**C2IFT
Treatment
Protocols**

WEST VIRGINIA
Department of

**Health &
Human
Resources**



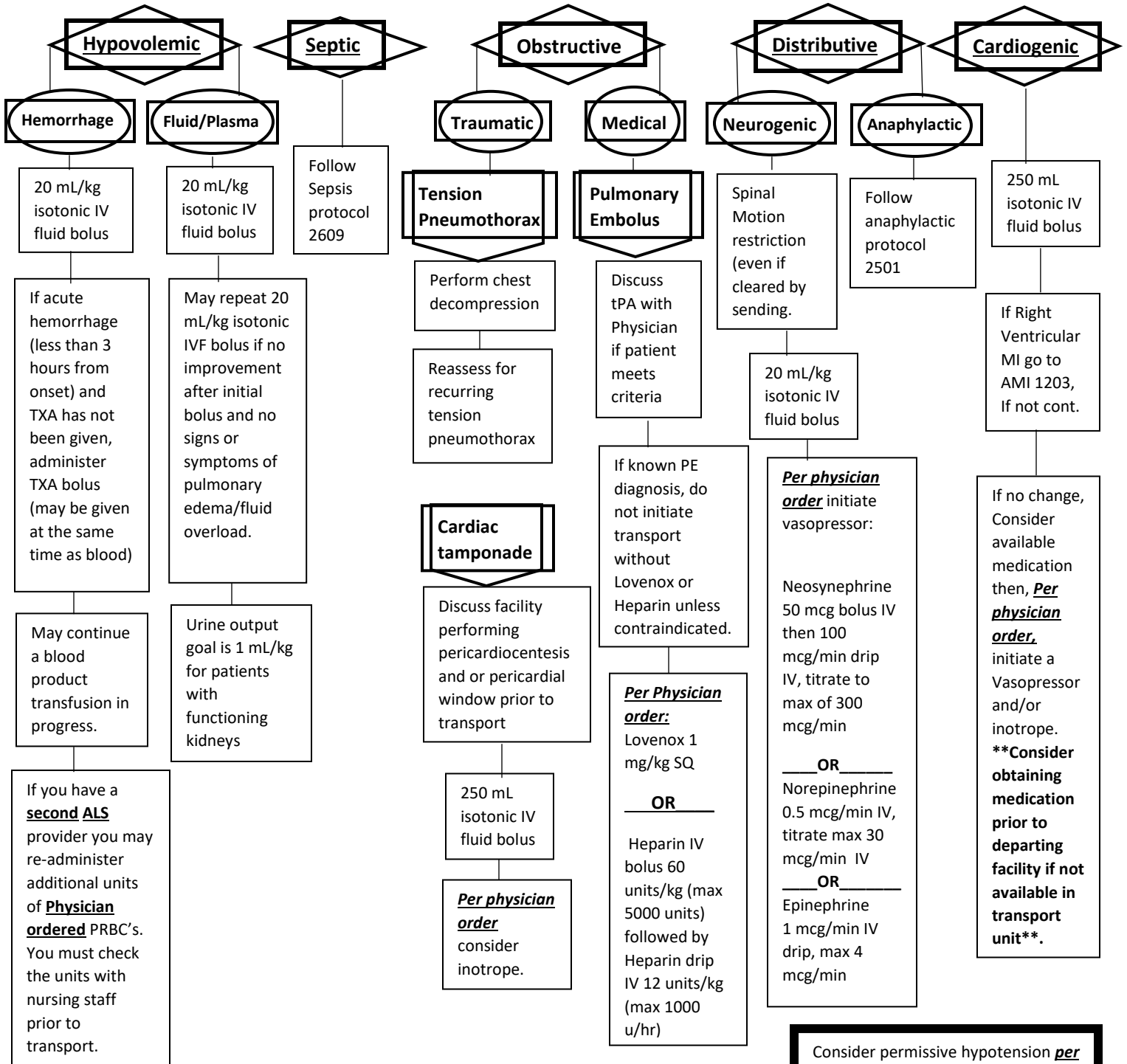
BUREAU FOR PUBLIC HEALTH
Office of Emergency Medical Services



TABLE OF CONTENTS

TRAUMA	2100
Shock	2101
CARDIAC	2200
Acute Myocardial Infarction	2201
Hypertensive Emergencies	2202
Adult Tachycardia	2203
RESPIRATORY	2300
Respiratory Distress	2301
CHF/Pulmonary Edema	2302
ENVIRONMENTAL	2500
Anaphylaxis	2501
Burns	2502
MEDICAL	2600
Seizures	2601
Adult DKA	2602
Obstetrics	2603
Sepsis	2604
Hyperkalemia	2605
SPECIAL TREATMENT PROTOCOLS	2900
Patient Comfort - Adult	2901
Blood Product Administration	2902

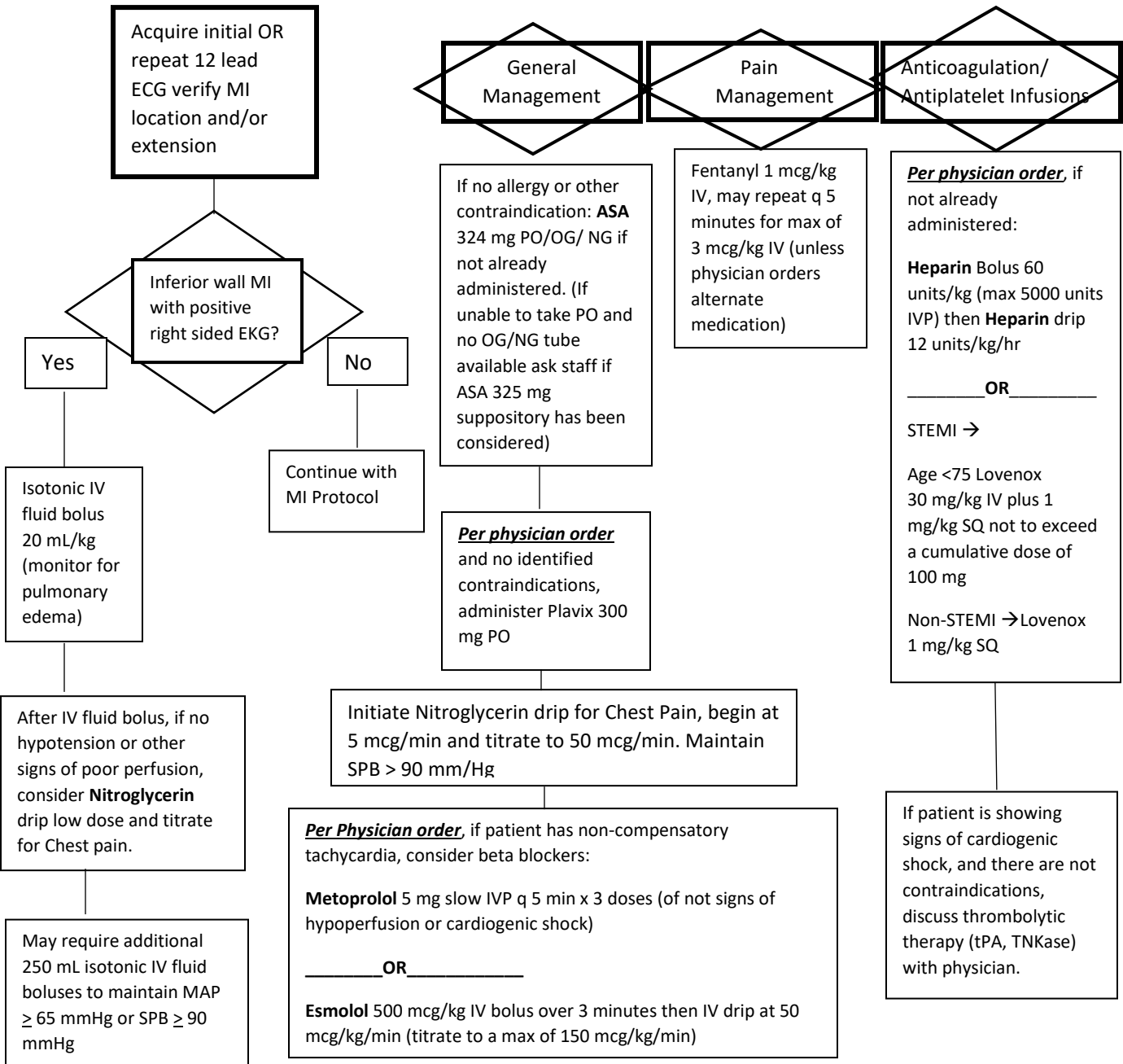
SHOCK



Consider permissive hypotension *per physician order* and *per physician parameters*. ***Obtain Pt. normal baseline BP (hypertension history)

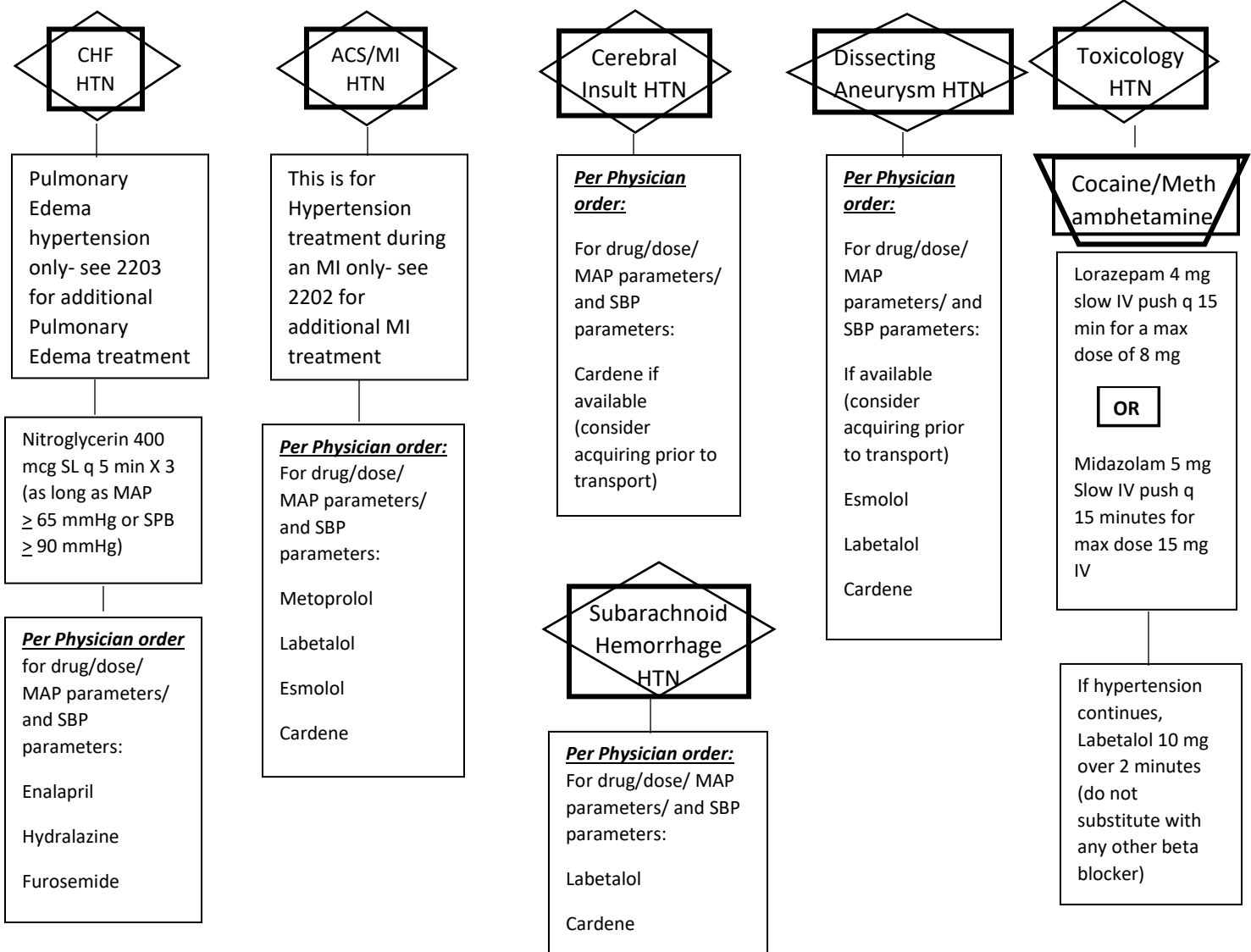
Acute Myocardial Infarction

Initial Treatment/Universal Patient Care Protocol



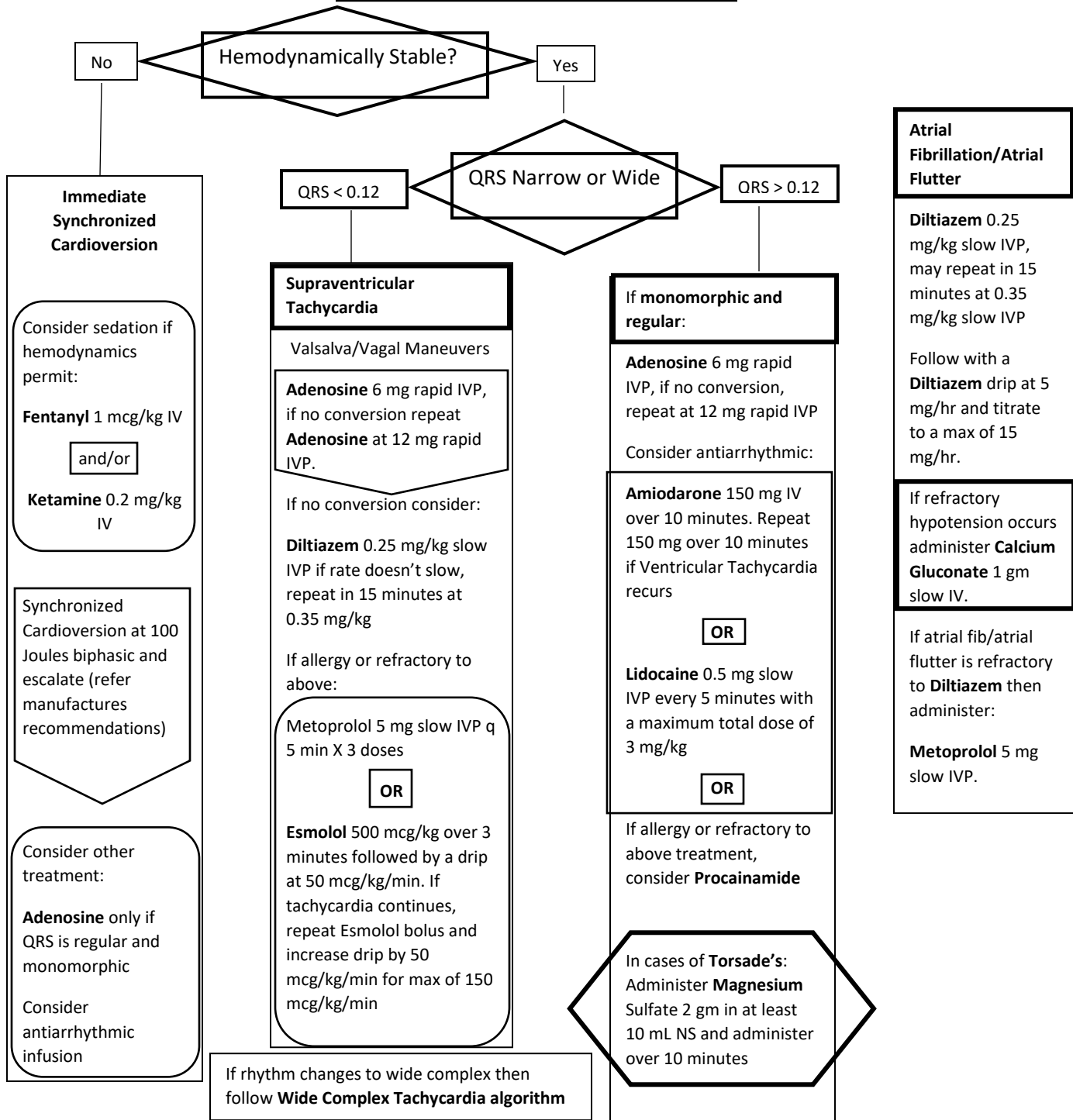
Hypertensive Emergencies

Obtain physicians orders for MAP, SBP and Max decrease in blood pressure for each of the following prior to transport:



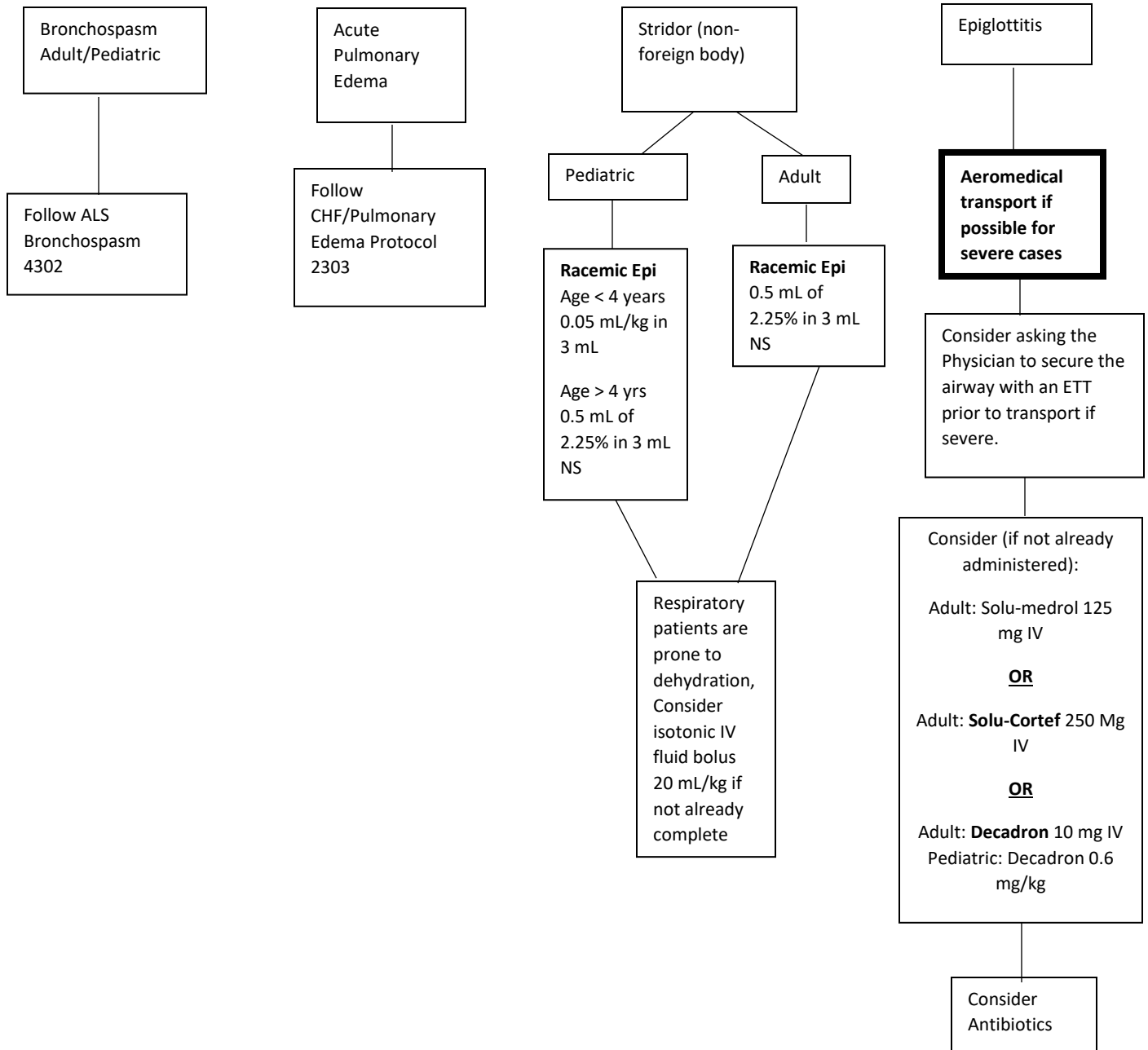
Adult Tachycardia

Consider other possible causes

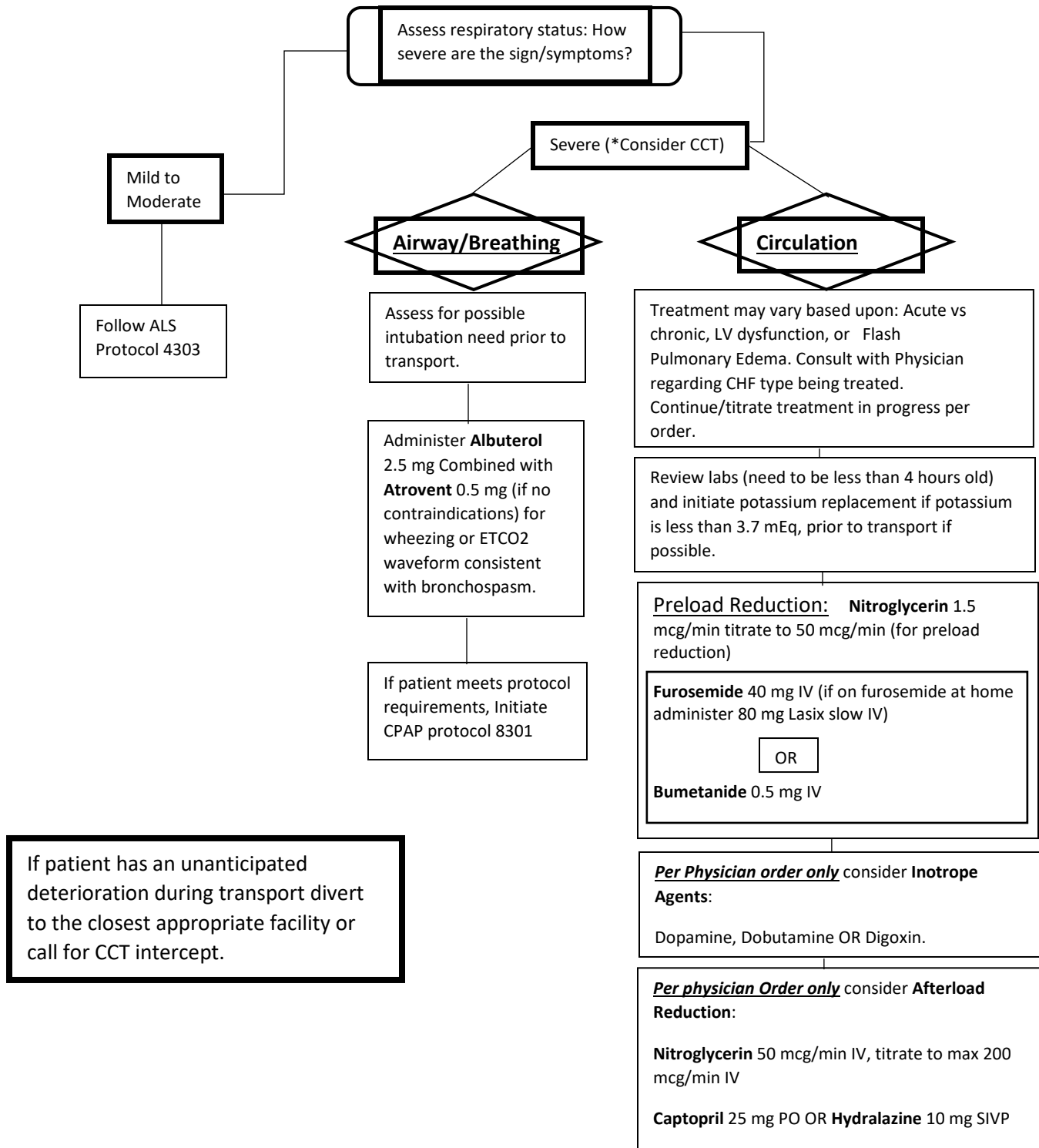


Respiratory Distress

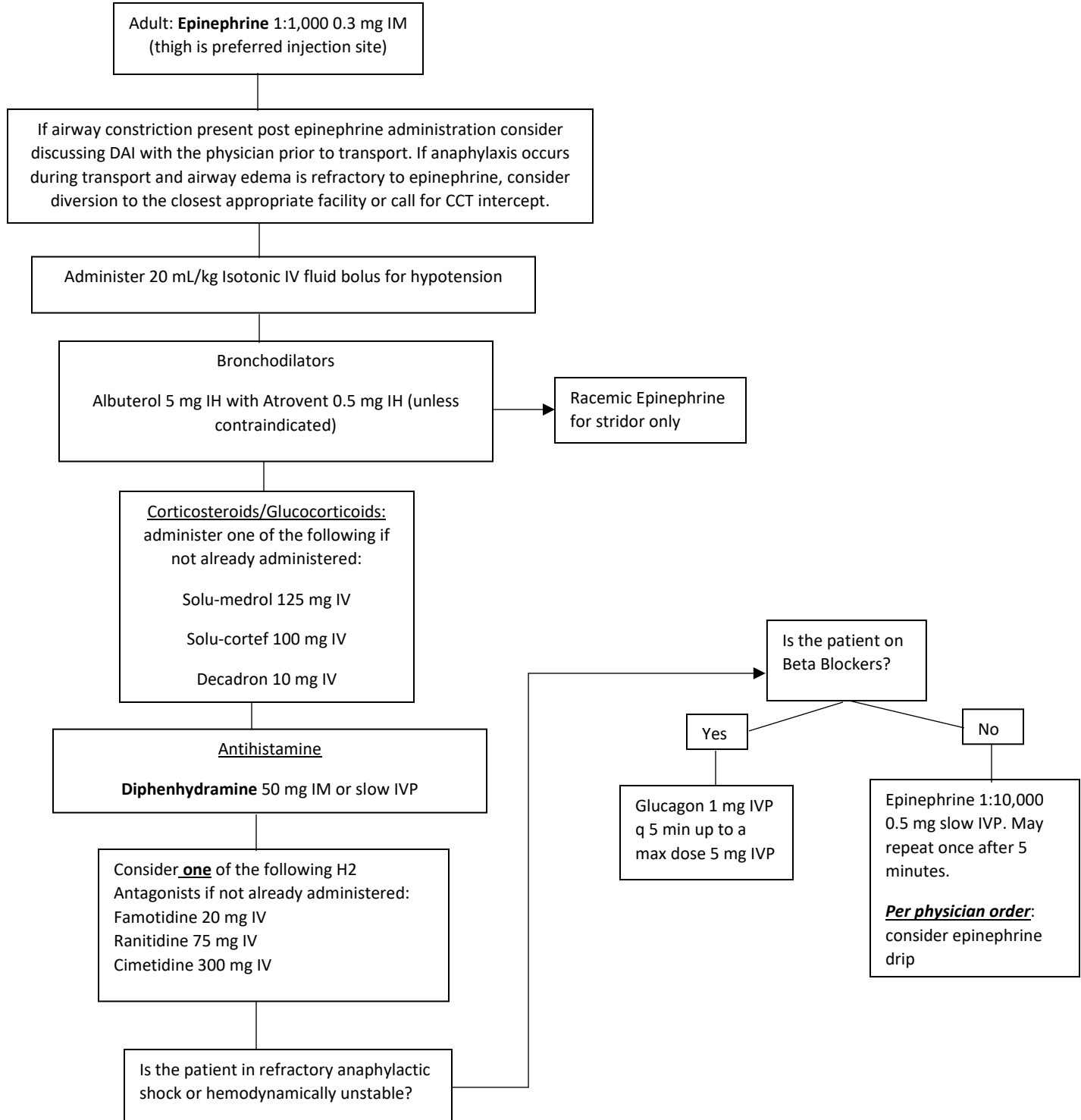
Initial Treatment/Universal Patient Care Guideline



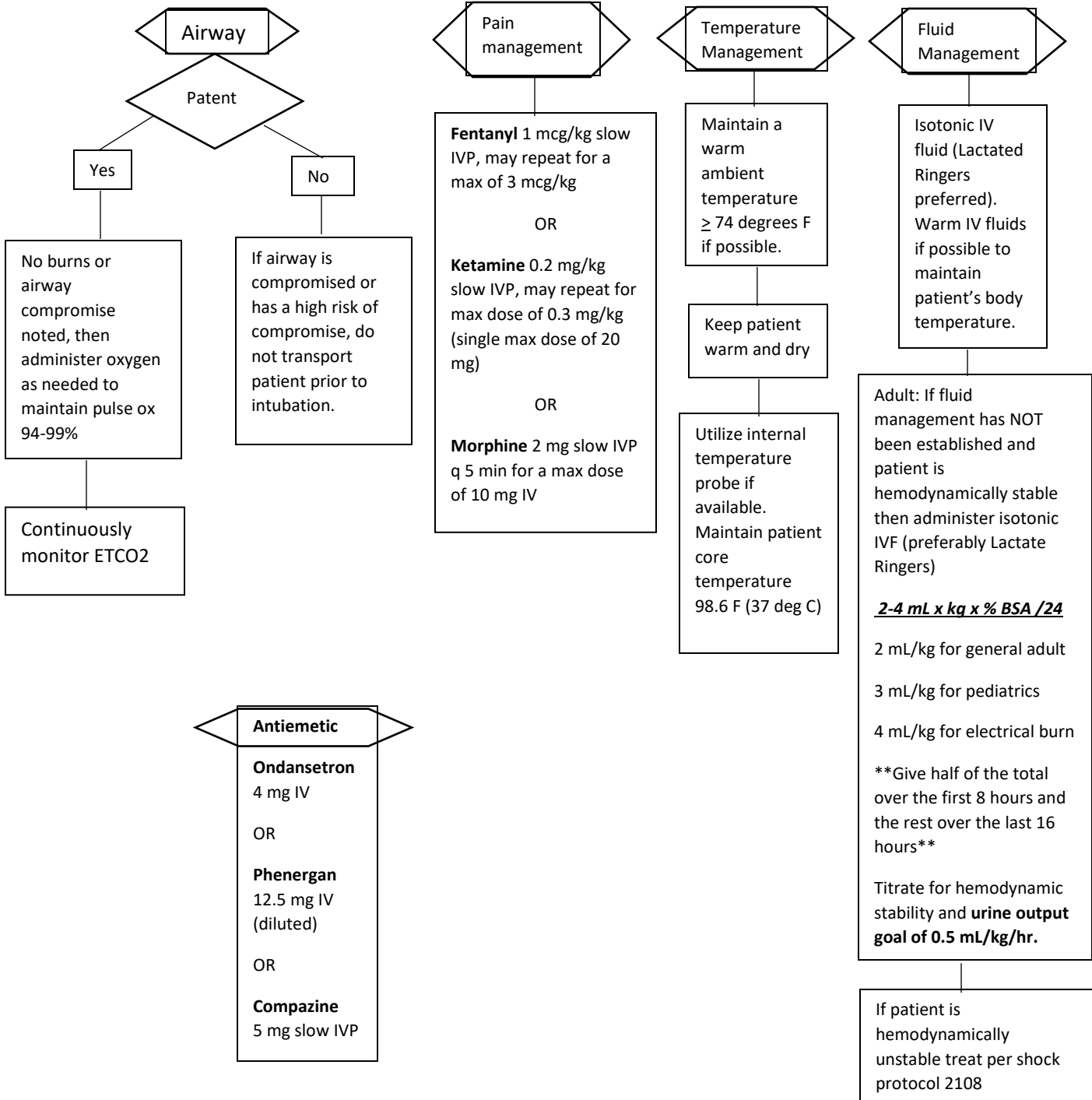
CHF/Pulmonary Edema



Anaphylaxis

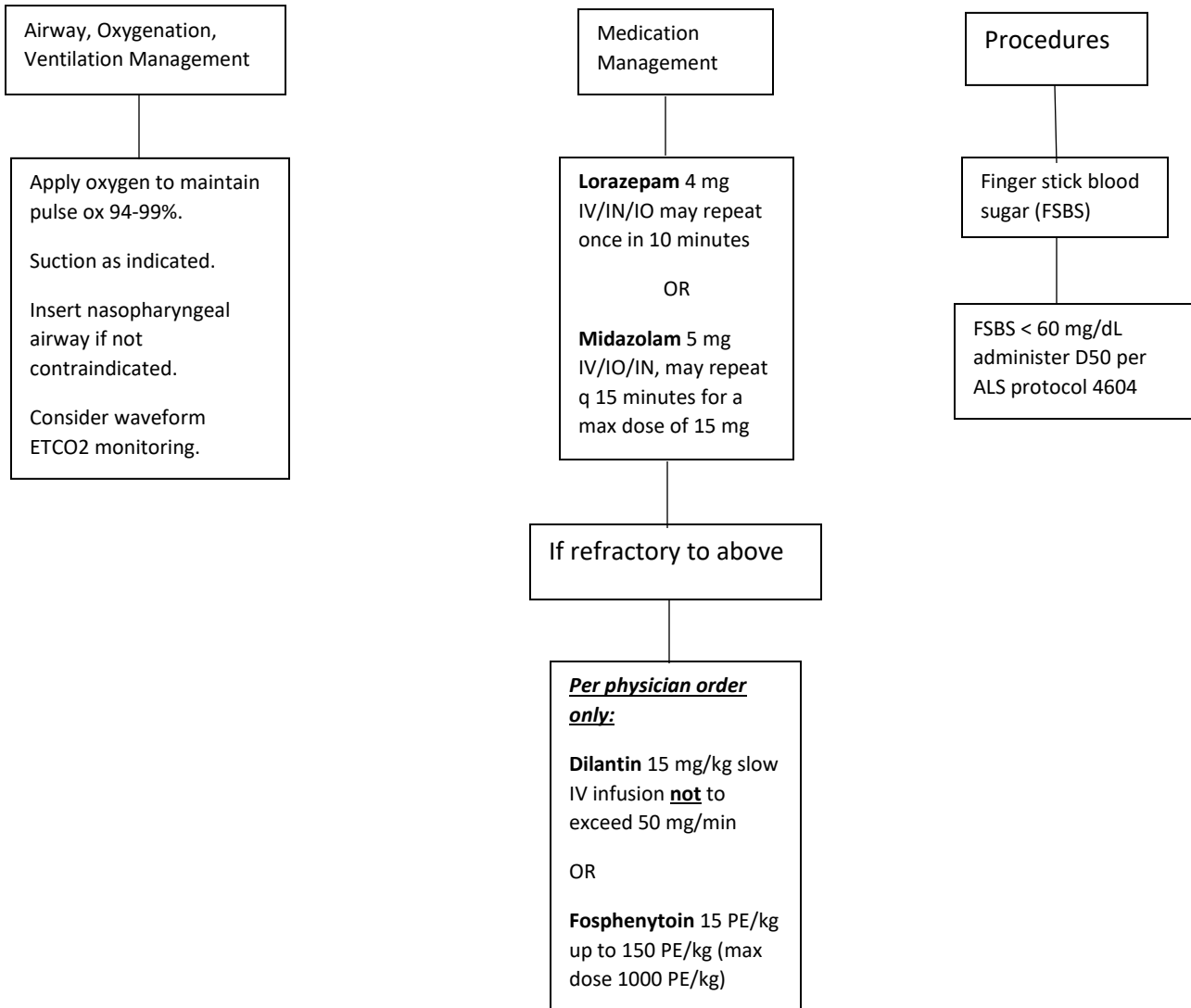


Burns



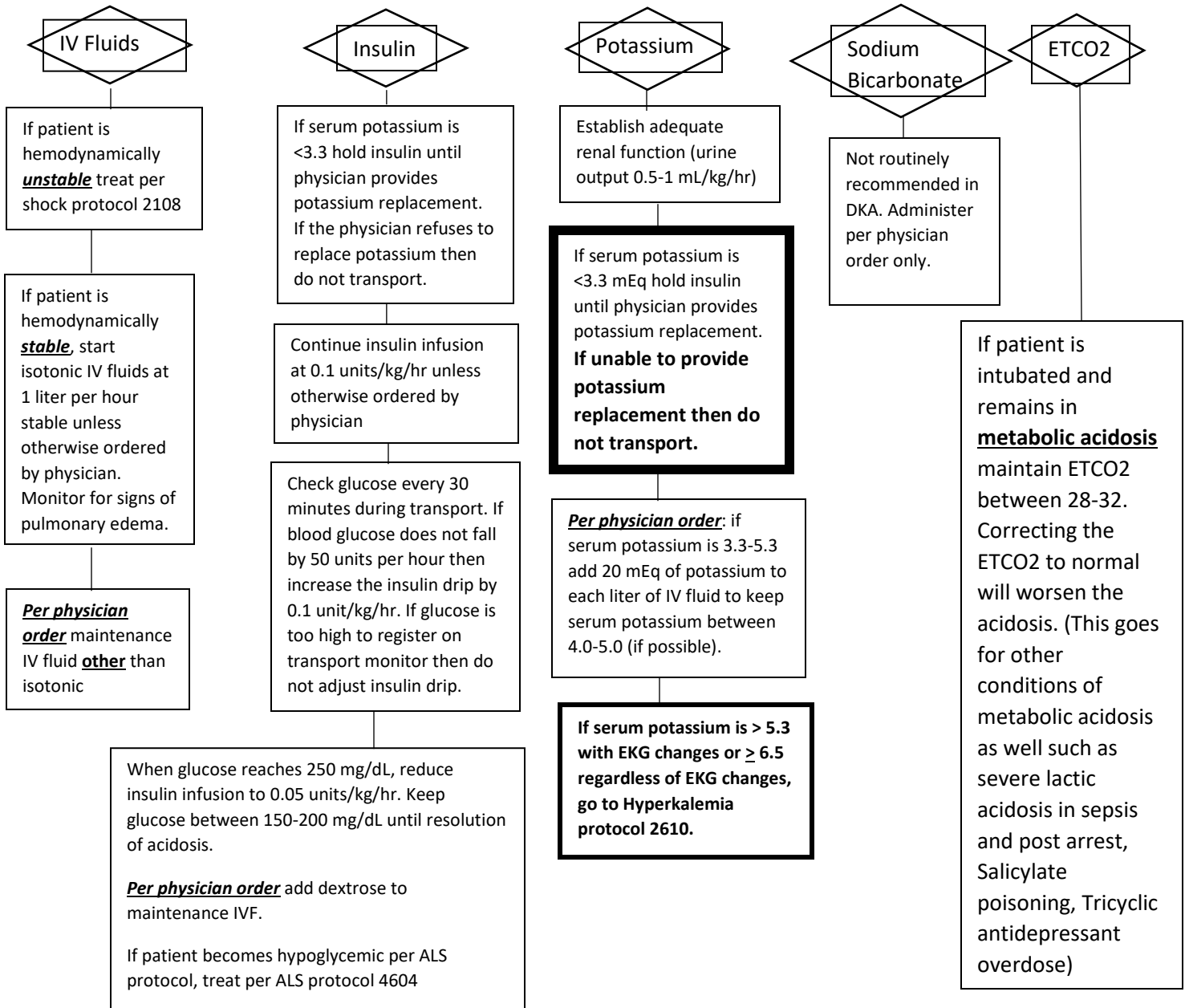
Seizures

Isolated seizure treat per ALS protocol 4403. Seizure that is prolonged or recurrent not related to eclampsia continue in this protocol.



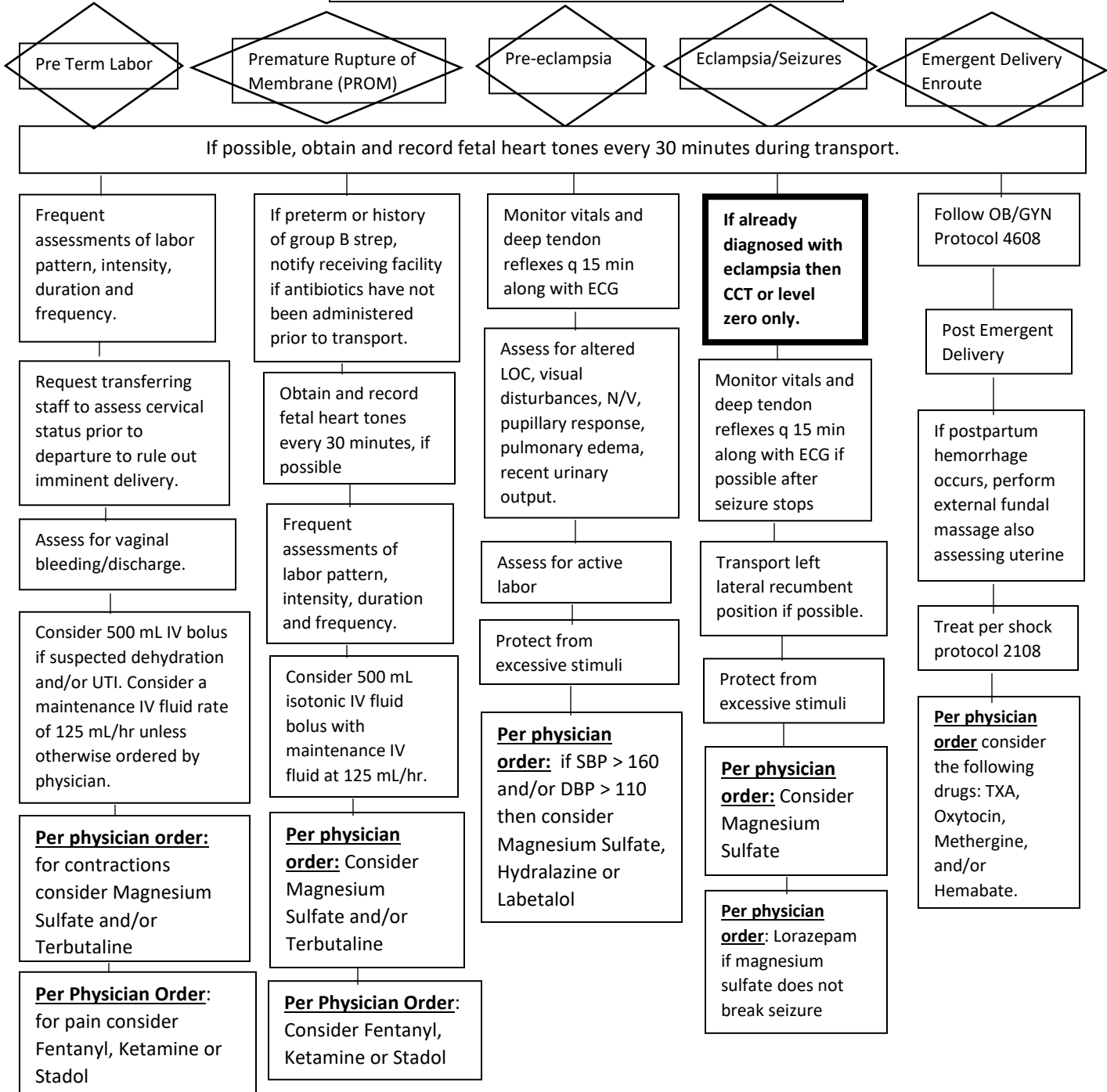
Adult DKA

Complete initial evaluation. **Ensure labs are < 30 min old** or ask facility to repeat labs and call transport crew with results while enroute to receiving facility. Check serum/urine ketones to confirm ketonemia/ketonuria. Check glucose to verify hyperglycemia.



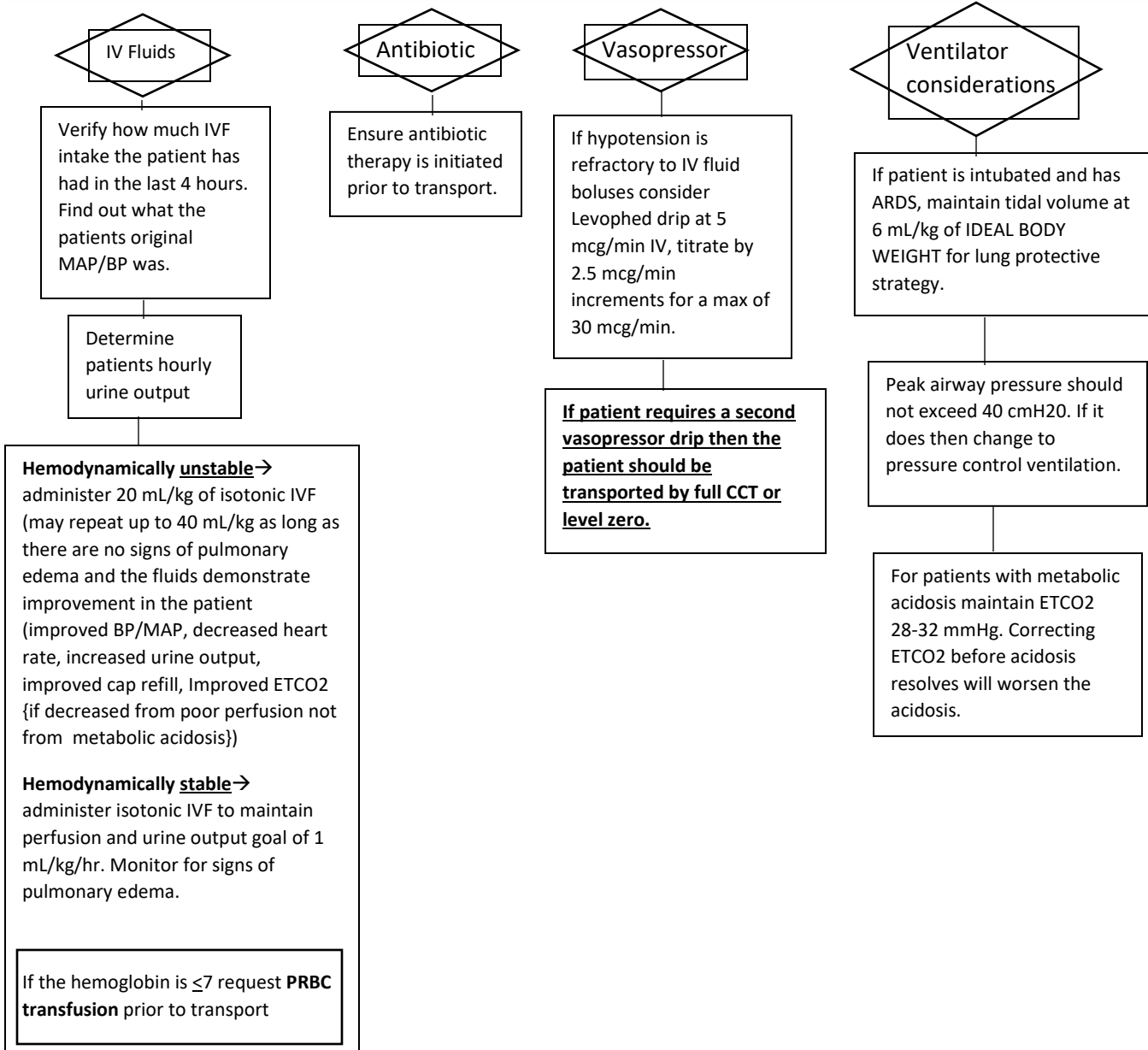
Obstetrics

If delivery appears imminent then do not transport.

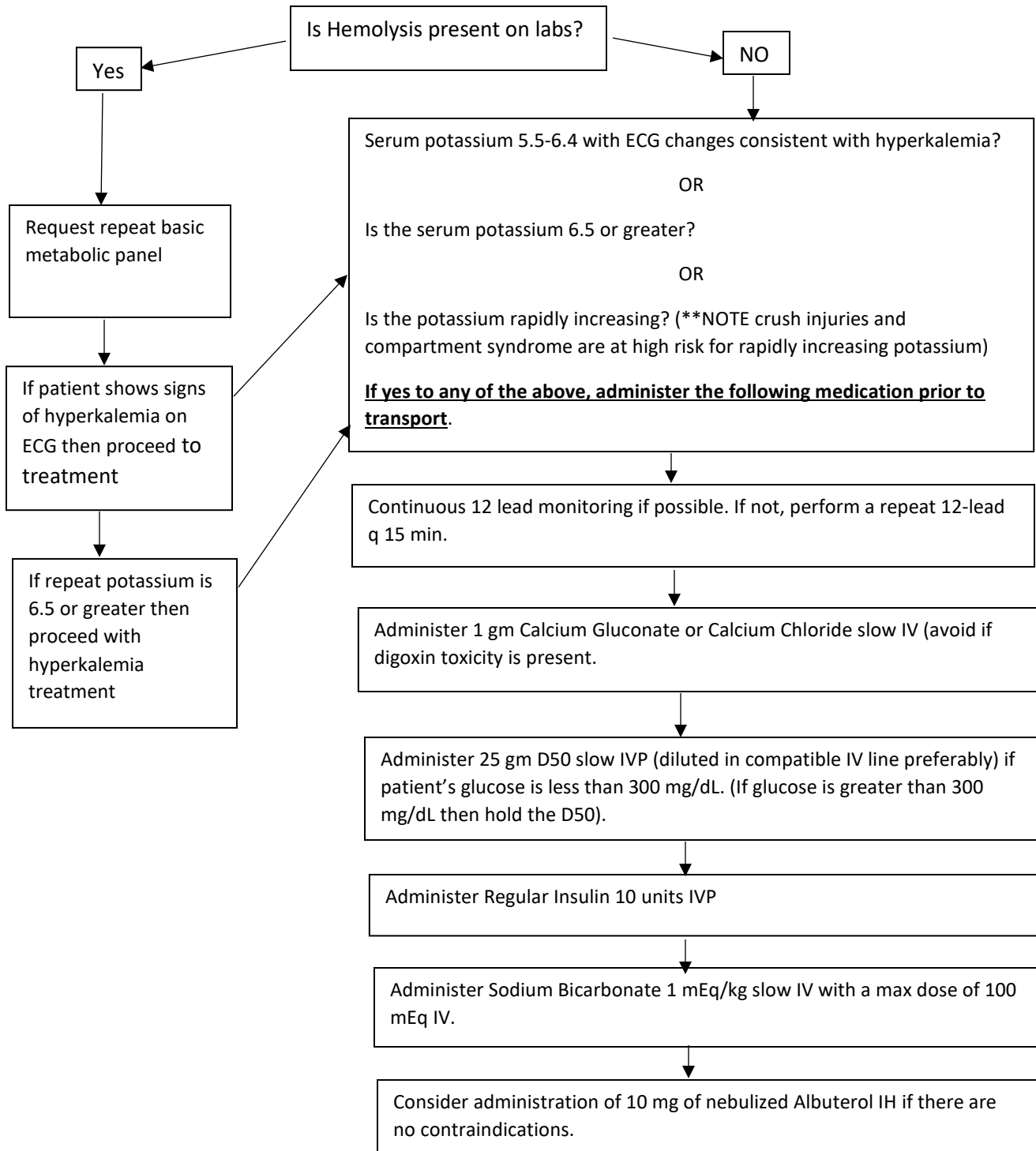


Monitor for Mag Toxicity. If present, administer Calcium Gluconate or Calcium Chloride Slow IV- goal is reversal of CNS depression

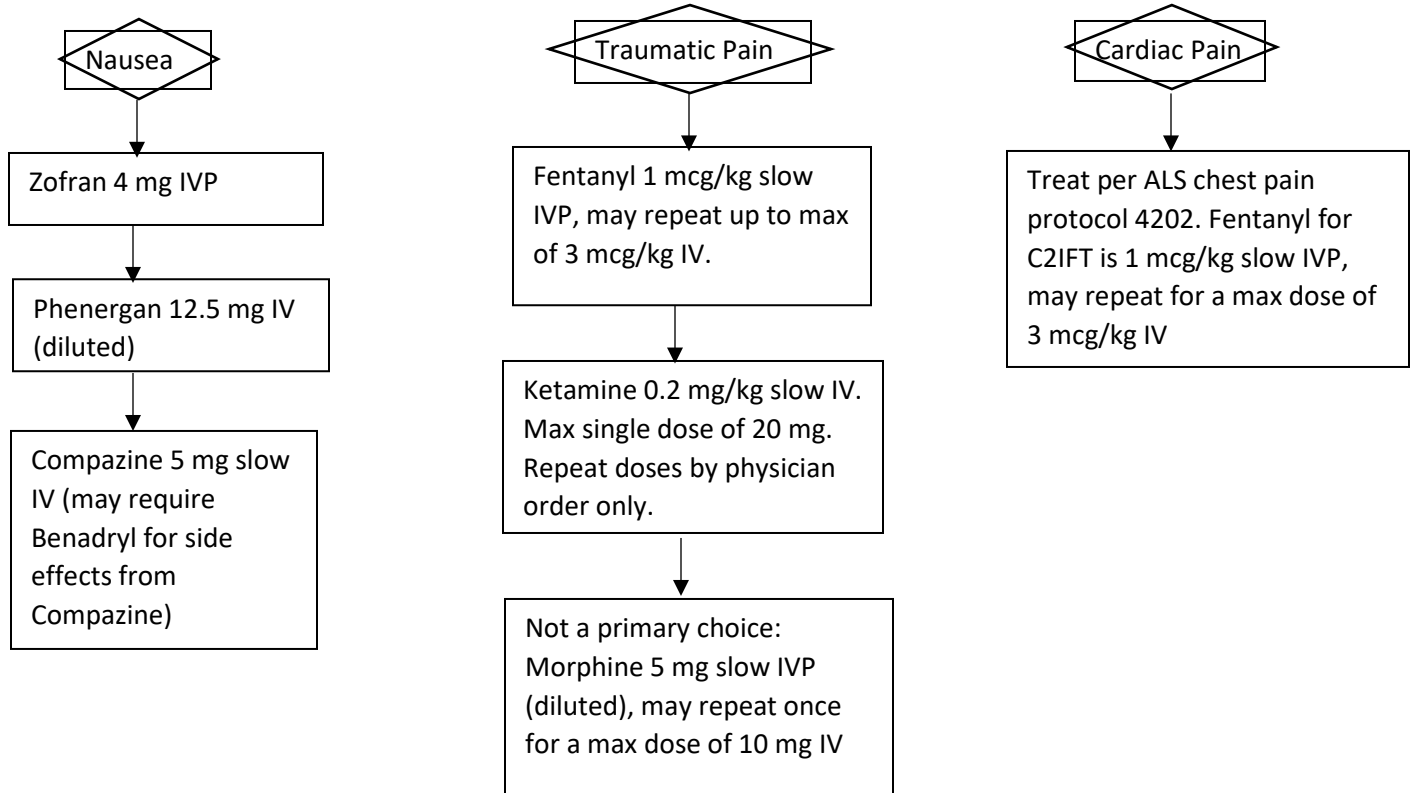
Sepsis



Hyperkalemia



Patient Comfort Adult



Blood Product Administration

Identify time that blood was removed from the cooler, blood must be completely infused within four (4) hours of removal***

