



Design: MT 6009 L
Built: 2009
IMO No: 9417359
Call sign: C6XY8

SKANDI OLYMPIA

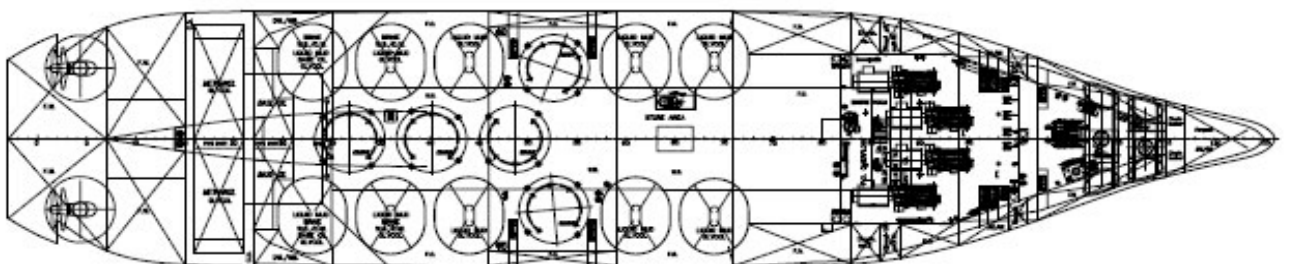
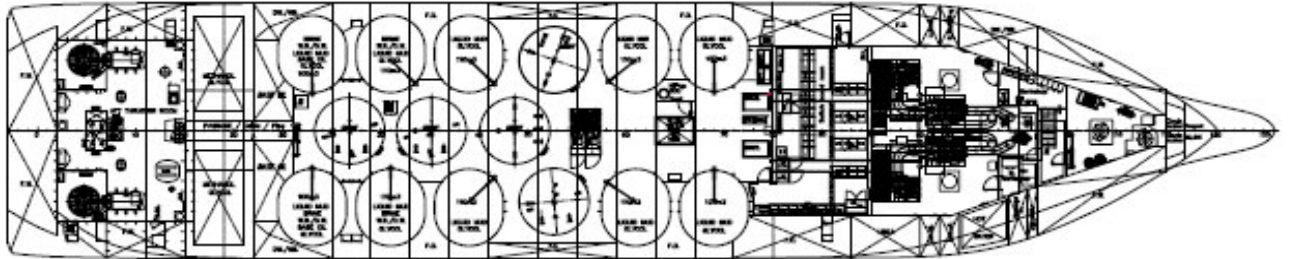
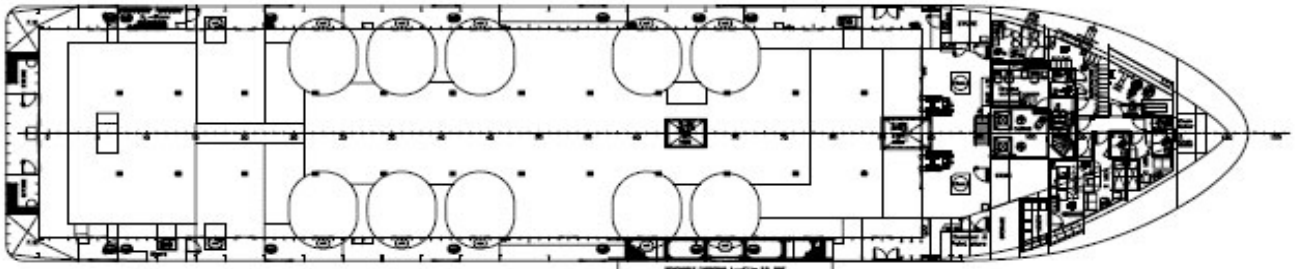
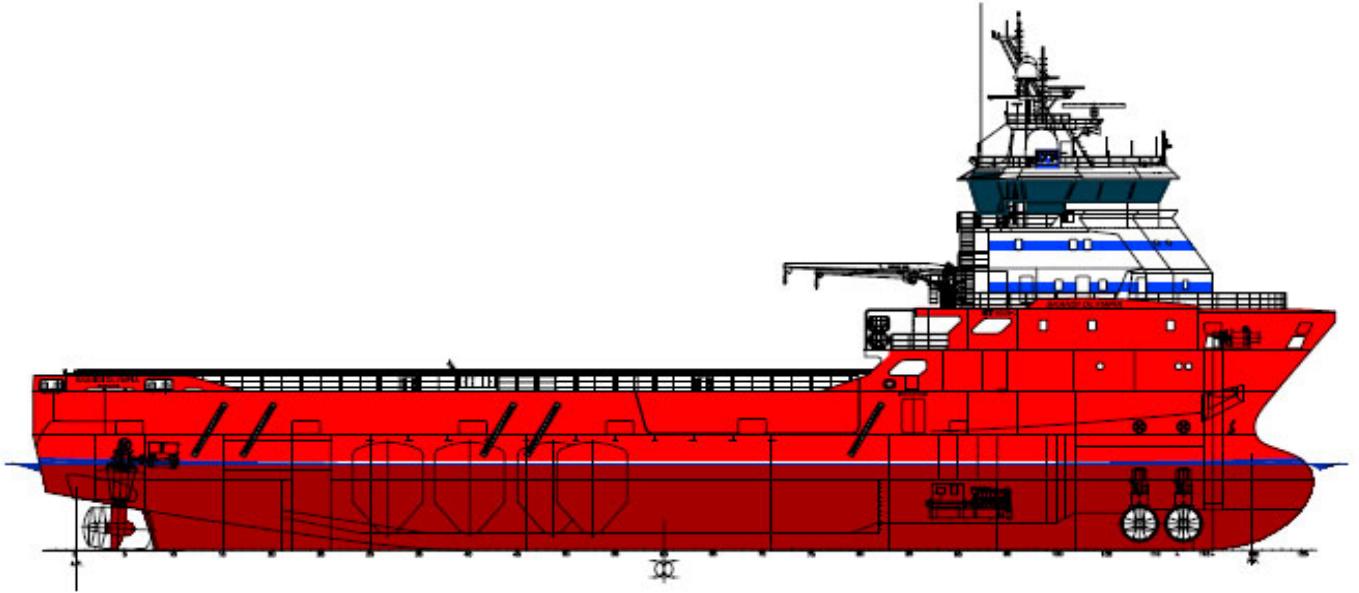
Multipurpose Field Support Vessel



Skandi Olympia



IMO No 9417359



Skandi Olympia



IMO No 9417359



Skandi Olympia

Technical data



IMO No 9417359

General

Deisgn:	MT 6009 L – Multipurpose Field Support Vessel
Built by/ No./ Year	Fitjar Mekaniske Verksted A/S /31 /2009
Official No.	8001679
Call Sign	C6XY8
IMO Number	9417359
Port of Reg.	Nassau, Bahamas
MMSI	311 026 300

Classification and Regulations

DNV +1A1,SUPPLY VESSEL,SF,EO,DYNPOS –AUTR(IMO DPII),DK(+),HL(2,5),CLEAN CLASS,LFL*, COMF-V(3),NAUT-OSV

Main Particulars

Length overall	79.6 m
Length between p.p.	72.0 m
Breadth moulded	16.4 m
Depth main deck	7.4 m
Max draught	6.2 m
Air draught (Keel to top of mast)	34.2 m
+ Antenna 1,8 mtr = 36 mtr.	
DWT	3 700 T
GRT	3 131 T
Net tonnage	1 167 T

Discharge Capacities

Fuel Oil: 2 x 2-spindle screw pumps, 0-200 m³/h, 9,0 bar
Base Oil: 1 x Centrifugal pump, 150 m³/h, 9,0 bar
Fresh Water: 2 x 2-spindle screw pump, 0-200 m³/h, 9,0 bar
Drill Water: 1 x 2-spindle screw pump, 0-150 m³/h, 9,0 bar
Mud: 2 x Eccentric screw pump,0-75 m³/h, 18 bar
Brine: 2 x 2-spindle screw pump, 0-75 m³/h, 18 bar
Methanol: 2 x Centrifugal pump-Submerged-Hydr.driven, 0-60 m³/h, 9 bar
Base oil : 1 x 2—spindle screw pump. 0-150 m³/h, 9,0 bar
Dry Bulk: 2 off screw compressors Atlas Copco GA160 2 x 29,1 nm³/min

Deck Capacities

Cargo deck area	718 m ²
Deck Cargo	1 600 t (G-1 m above deck)
Deck Size	53.8 m X 13.35 m (aft of White line: 657 m ²)
Deck strength	5 t/m ²
Cargo rail height	4 150 m
Removable Cargorail	13.1 m Stb.Side (Main Deck) Weight: 12 T

Skandi Olympia

Technical data



IMO No 9417359

Accommodation:

Total Capacity	40 persons
Single Cabins	12 - All with sat.TV & internet access
Double cabins	14 - All with sat.TV & internet access
Hospital	1 Off w/ internet access (situated for 1 person)
Conference Room	One off w/lounge included sat.TV & internet access
Lounges	One fully equipped with sat. TV & Home cinema surround system.
Smoking Lounge	One Off
Gymnasium	One fully equipped gym with sat.TV

Machinery & Propulsion

Main Engines:	4 x CAT 3512 B each 1424 KW
Emergency Generator:	Volvo Penta-100 KW
Diesel electric Main propulsion:	2 x Rolls-Royce Azimuth US 205 CRP –each 1470 KW
Bow Tunnel Thrusters:	2 x Rolls-Royce TT2000, 800 KW

Performance

Full Speed	14 kn (18.5 m ³ / 24 hours)
Cruise Speed	12 kn (13.5 m ³ / 24 hours)
Stand By & DP	3.0 m ³ / 24 hours
In Port	1.2 m ³ / 24 hours

Contingency Equipment

Liferafts	6 x 20 persons each .
FRC	One off – small type w/outboard engine – 40 HP.
Survival suits	45 off – HellyHansen E 307

Dynamic Positioning / Automation plant

DP System: K-POS 2 (AUTR)
Ref.System: 2 off DGPS(Seatex 132 & 200)
1 off Fanbeam
1 off HI-PAP
3 off Operator stations + 1 off cJoy + 1 off cJoy W/DP (portable for the wings)
Integrated Automation System (IAS). Type: Kongsberg (K-Chief)
2 off operator station in ECR
3 off operator station on bridge
1 off operator station in MSB

Skandi Olympia

Technical data



IMO No 9417359

Deck Machinery

Tugger Winches: 2 x 10 Ton
Mooring Capstan Aft: 2 Off
Mooring Winch/Windlass: 2 off – 15 Ton
Cargo securing winches: 3 x 5 Ton (port side of cargo deck)
Cranes: 1 x 1 Ton & 1 x 3 Ton Type:Palfinger Marine
Anchors: 2 x SPEK a 3050 Kg (Galvanized)
Anchor Chain: 18 lengths total

Power Outlet Deck - (ROV)

Port side:

Noratel 3 Phase Transformer 690V /440V 600 Kva

Deck outlets:

1 x 440V (3 phase) 630 A
1 x 440V (3 phase) 250 A
1 x 440V (3 phase) 160 A

Starboard side:

Noratel 3 Phase Transformer 690V / 440V 600 kVA

Deck outlets:

1 x 440V (3 phase) 630 A
1 x 440V (3 phase) 250 A
1 x 440V (3 phase) 160 A

Noratel 3 Phase Transformer 690V / 230V 40kVA

Deck outlets:

1 x 230V (3 phase) 63 A
1 x 230V (3 phase) 32 A
3 x 230V (3 phase) 16 A

Navigation & Communication Equipment

Radars: 1 off Furuno FCR 2837 X-Band Chart Radar(3 cm)
1 off Furuno FAR 2837 S-Band (10 cm) Chart radar
Ecdis: 2 off TECDIS (Telchart) with ENC charts installed.
Autopilot: 1 off Simrad AP-50
Gyrocompass: 3 off Simrad GC 80 gyrocompass
Echo sounder: 1 off – FURUNO FE 700
Speed log: 1 off – FURUNO DS-80
AIS : 1 off - FURUNO FA 150
BWMS (Bridge Watch Monitoring System): 1 Off Kongsberg MOSS
VDR: 1 off- FURUNO VR-3000
Navigation GPS: 2 off FURUNO GP-150 D-GPS
GMDSS A3 Radio Station: 1 off FURUNO MF/HF – FS 2570 250 W
VHF DSC: 2 off FURUNO FM 8800
VHF work: 4 off SAILOR RT 2048
UHF fixed: 3 off MOTOROLA GM 380
Sat phone: 1 off- Nera Fleet 77
1 off – V-SAT system interfaced in the ships phone central system.
Dual Antenna system : KU 6006
Navtex: 1 off FURUNO NX-700



DOF Multipurpose Field Support Vessel



Skandi Olympia IMO: 9417359

www.dof.no

www.dofman.no | www.dofsubsea.no

produce by DOF Management AS