

### Covers

#### Number Selection

#### Tray Covers

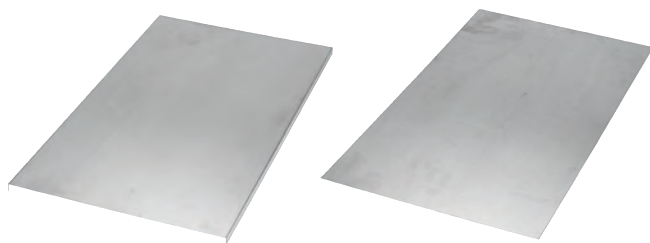
Tray covers are available for all classes of tray. They should be installed where falling objects may damage cables or where vertical tray run is accessible by pedestrian or vehicular traffic.

Cover mounting hardware must be ordered separately.

#### Solid Covers

These covers provide maximum mechanical protection for cables with limited heat build up. Solid covers are available with or without flange. Flanged covers have 1/2 in. flange.

Cover mounting hardware must be ordered separately.



#### Ventilated Flanged Covers

This design offers excellent mechanical protection while allowing heat produced by cables to dissipate.

Cover mounting hardware must be ordered separately.



#### For extreme applications : Peaked flanged covers, peaked ventilated covers

Peaked covers offer mechanical protection, reduce pooling of liquids on the cover and the accumulation of snow or ice.

Peaked covers have 15° angle.

Cover mounting hardware must be ordered separately.



## Covers

### Straight Cover Number Selection

<b>(ABW-3-12)-SNC-72</b>				
Material Prefix	Cover Series	Width	Cover Type	Length
ABW • Aluminum	<b>3</b>	06 • (6 in.) 09 • (9 in.) 12 • (12 in.) 18 • (18 in.) 24 • (24 in.) 30 • (30 in.) 36 • (36 in.) 42 • (42 in.)	SNC • Solid non-flanged cover SFC • Solid flanged cover VFC • Ventilated flanged cover PFC • Peaked flanged cover* PVC • Peaked ventilated flanged cover *	72 • (72 in.) 3 • (3 m)

### Fittings Cover Number Selection

<b>AUW-12-SNC-HB90-24</b>						
Material Prefix	Fitting Style Prefix	Width	Cover Type	Fitting Type	Degree	Nominal Radius
A • Aluminum	UW • U-Beam HW • H-Beam	06 • (6 in.) 09 • (9 in.) 12 • (12 in.) 18 • (18 in.) 24 • (24 in.) 30 • (30 in.) 36 • (36 in.) 42 • (42 in.)	SNC • Solid non-flanged cover SFC • Solid flanged cover VFC • Ventilated flanged cover	HB • Horizontal bend VI • Vertical inside bend	30 • (30°) 45 • (45°) 60 • (60°) 90 • (90°)	12 • (12 in.) 24 • (24 in.) 36 • (36 in.) 48 • (48 in.)

T&B aluminum cable tray is composed of two distinct systems H-Style and U-Style. These systems are interchangeable.

## Covers

### Fittings Cover Number Selection

<b>AUW-18-12-SNC-RT-12</b>						
Material Prefix	Fitting Style Prefix	Width 1	Width 2**	Cover Type	Fitting Type	Radius*
A • Aluminum	UW • U-Beam HW • H-Beam	06 • (6 in.) 09 • (9 in.) 12 • (12 in.) 18 • (18 in.) 24 • (24 in.) 30 • (30 in.) 36 • (36 in.) 42 • (42 in.)	06 • (6 in.) 09 • (9 in.) 12 • (12 in.) 18 • (18 in.) 24 • (24 in.) 30 • (30 in.) 36 • (36 in.) 42 • (42 in.)	SNC • Solid non-flanged cover SFC • Solid flanged cover VFC • Ventilated flanged cover	RT • Horizontal reduce tee ET • Horizontal expand tee EX • Horizontal expand cross HSR • Horizontal straight reducer HLR • Horizontal left reducer HRR • Horizontal right reducer HT • Horizontal tee HX • Horizontal cross VTU • Vertical tee up HYR • Horizontal wye right HYL • Horizontal wye left	12 • (12 in.) 24 • (24 in.) 36 • (36 in.) 48 • (48 in.)

NOTE: For ET and EX, W2 > W1. For RT, HSR, HLR, HRR, W1 > W2.

\*\* Not required for VTU, HYR, HYL, HT, HX

\* Radius not required for HSR, HLR, HRR, HYR, HYL.

### Fittings Cover Number Selection

<b>AUW-4-12-SNC-VO90-24</b>							
Material Prefix	Fitting Style Prefix	Side Rail Height	Width	Cover Type	Fitting Type	Degree*	Nominal Radius
A • Aluminum	UW • U-Beam HW • H-Beam	4 • (4 in.) 5 • (5 in.) 6 • (6 in.) 7 • (7 in.)	06 • (6 in.) 09 • (9 in.) 12 • (12 in.) 18 • (18 in.) 24 • (24 in.) 30 • (30 in.) 36 • (36 in.) 42 • (42 in.)	SNC • Solid non-flanged cover SFC • Solid flanged cover VFC • Ventilated flanged cover	VO • Vertical outside bend VTD • Vertical tee down CS • Cable support	30 • (30°) 45 • (45°) 60 • (60°) 90 • (90°)	12 • (12 in.) 24 • (24 in.) 36 • (36 in.) 48 • (48 in.)

Note: For peaked fitting covers refer to pages A95 to A97

\* Not required for VTD nor for CS

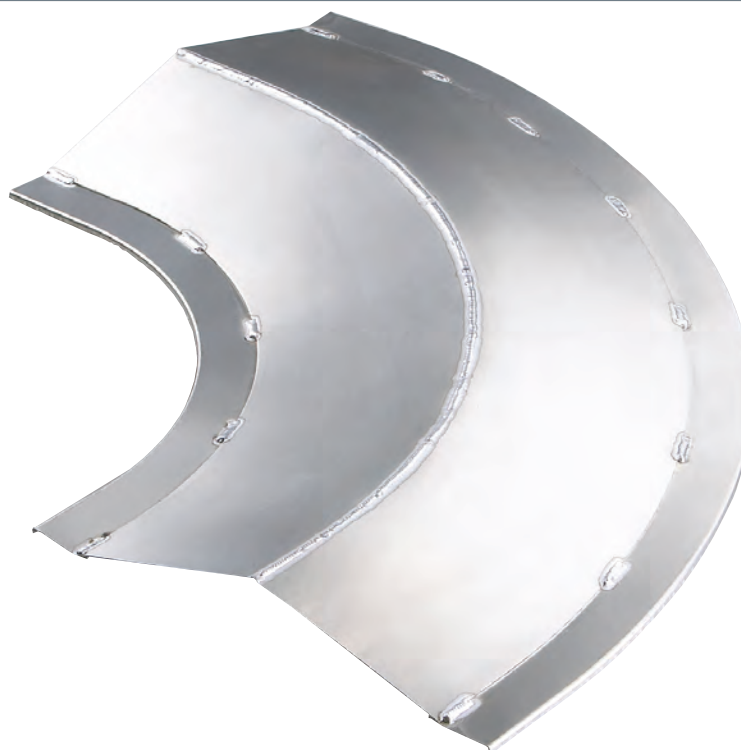
T&B aluminum cable tray is composed of two distinct systems  
H-Style and U-Style. These systems are interchangeable.

### Covers

#### Peaked Covers

#### Horizontal Bend / Vertical Inside Bend

For Horizontal Bend



#### Aluminum Number Selection

**AUW-12-PFC-HB-90-24**

Material	Fitting Style	Width	Cover Type	Fitting Type	Degree	Nominal Radius
A • Aluminum	UW • U-Beam HW • H-Beam	06 • (6 in.) 09 • (9 in.) 12 • (12 in.) 18 • (18 in.) 24 • (24 in.) 30 • (30 in.) 36 • (36 in.) 42 • (42 in.)	PFC • Peaked flanged cover PVC • Peaked ventilated flanged cover	HB • Horizontal bend VI • Vertical inside bend	30 • (30°) 45 • (45°) 60 • (60°) 90 • (90°)	12 • (12 in.) 24 • (24 in.) 36 • (36 in.) 48 • (48 in.)

Note: Pregalvanized not available

T&B aluminum cable tray is composed of two distinct systems  
H-Style and U-Style. These systems are interchangeable.

Covers

Peaked Covers



Aluminum Number Selection

AUW-4-12-PFC-VO-90-24							
Material Prefix	Fitting Style Prefix	Side Rail Height*	Width	Cover Type	Fitting Type	Degree	Nominal Radius
A • Aluminum	UW • U-Beam HW • H-Beam	4 • (4 in.) 5 • (5 in.) 6 • (6 in.) 7 • (7 in.)	06 • (6 in.) 09 • (9 in.) 12 • (12 in.) 18 • (18 in.) 24 • (24 in.) 30 • (30 in.) 36 • (36 in.) 42 • (42 in.)	PFC • Peaked flanged cover PVC • Peaked ventilated flanged cover	VO • Horizontal outside bend VI • Vertical inside bend	30 • (30°) 45 • (45°) 60 • (60°) 90 • (90°)	12 • (12 in.) 24 • (24 in.) 36 • (36 in.) 48 • (48 in.)

\* Not required for VI  
Note: Pregalvanized not available

T&B aluminum cable tray is composed of two distinct systems  
H-Style and U-Style. These systems are interchangeable.

### Covers

#### Peaked Covers

##### Horizontal Tee



#### Aluminum Number Selection

### AUW-12-PFC-HT-24

Material Prefix	Fitting Style Prefix	Width	Cover Type	Fitting Type	Nominal Radius
A • Aluminum	UW • U-Beam HW • H-Beam	06 • (6 in.) 09 • (9 in.) 12 • (12 in.) 18 • (18 in.) 24 • (24 in.) 30 • (30 in.) 36 • (36 in.) 42 • (42 in.)	PFC • Peaked flanged cover PVC • Peaked ventilated flanged cover	HT • Horizontal tee	12 • (12 in.) 24 • (24 in.) 36 • (36 in.) 48 • (48 in.)

Note: Pregalvanized not available

T&B aluminum cable tray is composed of two distinct systems  
H-Style and U-Style. These systems are interchangeable.

## Covers

### Accessories For Covers

#### Quantity of Standard Cover Clamps Required

Quantity of Standard Cover Clamps Required			
<b>Straight section 1.8 m (6 ft.)</b>	4 pcs.	Tees	6 pcs.
<b>Straight section 3 m (10 ft.) and 3.7 m (12 ft.)</b>	6 pcs.	Crosses	8 pcs.
<b>Horizontal and vertical bends</b>	4 pcs.		

IMPORTANT NOTE: "B" in CAT. NO. indicates this accessory can be used for both styles.  
Note: when using heavy-duty cover clamp, only half the quantity of pieces are required.

### Economical Cover Clamp

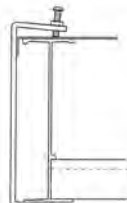


Cat. No.	Material	Side Rail Height
ABW-SCC	Aluminum	All Sizes

Cannot be used with U-Style fittings.

Rigid indoor cover clamp for flat and flanged covers.

### Universal Fitting Cover Clamp



Cat. No.	Material	Side Rail Height
ABW(*)FCC	Aluminum	4
(*) Insert side rail height		5
		6
		7

Rigid indoor cover clamp for flat and flanged covers.

### Heavy-Duty Cover Clamp



Cat. No.	Material	Side Rail Height	Tray Width (in.)
ABW4(*)HCC	Aluminum	4	06
ABW5(*)HCC		5	09
ABW6(*)HCC		6	12
ABW7(*)HCC		7	18
(*) Insert tray width			24
			30
			36
			42

Wraparound design offers added protection for rugged applications and outdoor conditions. Hardware included.

T&B aluminum cable tray is composed of two distinct systems  
H-Style and U-Style. These systems are interchangeable.

## Covers

### Accessories For Covers

#### Extreme Heavy-Duty Cover Clamp



Wraparound design offers added protection for rugged applications and outdoor conditions. Hardware included.

Cat. No.	Material	Side Rail Height	Tray Width (in.)
ABW4(*)ECC	Aluminum	4	06
ABW5(*)ECC		5	09
ABW6(*)ECC		6	12
ABW7(*)ECC		7	18

(\*) Insert tray width

24
30
36
42

#### Heavy-Duty Peaked Cover Clamp



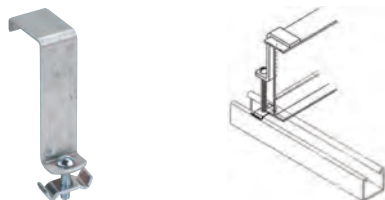
Wraparound design formed to fit peaked cover for outdoor applications. Hardware included.

Cat. No.	Material	Side Rail Height	Tray Width (in.)
ABW4(*)HPC	Aluminum	4	06
ABW5(*)HPC		5	09
ABW6(*)HPC		6	12
ABW7(*)HPC		7	18

(\*) Insert tray width

24
30
36
42

#### Hold Down Clamp



Designed to secure cable tray to support system.

Cat. No.	Material	Side Rail Height
ABW(*)HDC	Aluminum	4

Note: Hardware included (\*) Insert side rail height

5
6
7

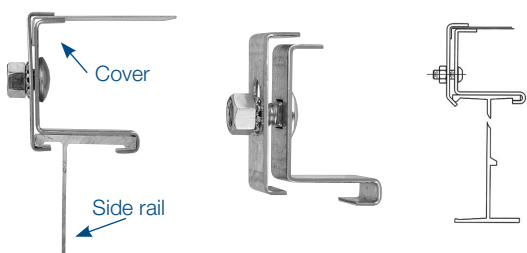
T&B aluminum cable tray is composed of two distinct systems H-Style and U-Style. These systems are interchangeable.



## Covers

### Accessories For Covers

#### Raised Cover Clamp



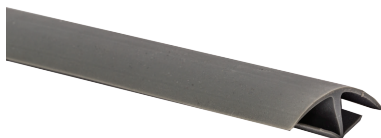
Cat. No.	Material	Cover Series	Cover Offset (in.)*
ABW3(*)RCC	Aluminum	3	1
(*) Cover offset. Designed to raise cover above tray for added ventilation. Note: For straight section and PFC and SFC covers only.			2
			3
			4

#### Peaked End Cap



Cat. No.	Material	Tray Width (in.)
ABW(*)PEC	Aluminum	06
(*) Insert tray width Used for transition between peaked covers to straight covers.		09
		12
		18
		24
		30
		36
		42

#### Cover Joint Strip



Cat. No.	Material	Tray Width (in.)
ABW(*)PCS	Plastic	06
(*) Insert tray width Strip used for joining flat covers end to end.		09
		12
		18
		24
		30
		36
		42

T&B aluminum cable tray is composed of two distinct systems H-Style and U-Style. These systems are interchangeable.