



# CAMRIN NEWS

Edition 6

January 2021

## A message from David White, Clinical Lead for the CAMRIN

Happy New Year! I hope you have all managed to get some down time during the Christmas period. We are now heading quickly into wave three of the COVID-19 pandemic with lockdown 3.0. However things feel very different this time.

Within the CAMRIN PMO we have spent some time looking back on everything you have helped the network to achieve in 2020, it makes really positive reading despite all the challenges COVID-19 has presented. I hope you will join us in looking forward to 2021, with optimism of what we can achieve when we work together and the strength of our resilience that has shone through during these unprecedented times.

Please take time to read through this issue of the bulletin, if you have any questions or suggestions for the network please contact [alexi.shenton@liverpoolft.nhs.uk](mailto:alexi.shenton@liverpoolft.nhs.uk)

Best Wishes

**David White, Clinical Lead, CAMRIN**

## Staff changes and appointments across the Network



- **Dr Feyi Babatola** – Consultant Interventional Neuro Radiologist at The Walton Centre NHS Foundation Trust from 1st February 2021
- **Melissa McAdam** – Interim CT Lead at The Royal site of Liverpool University Hospitals NHS Foundation Trust
- **Georgina Gallagher** – CT Principle Radiographer at Warrington and Halton Hospitals NHS Trust
- **Linda Williams** – Divisional Allied Health Professional Director at The Clatterbridge Cancer Centre NHS Foundation Trust.

## Network update

CAMRIN have continued to work closely with the North West Imaging Cell on the Adopt and Adapt plans. The implementation guides for developing Imaging Networks were **published by NHS England and NHS Improvement** and CAMRIN are now developing a strategy in response to these documents.

The two new network CT scanners are to be placed at The Countess of Chester's Ellesmere Port site and The Walton Centre. To support the three new scanners within the region new software and cross site working has been implemented. These new initiatives ensure the back office processes are in place, so that a patient can be safely scanned at any hospital and the image can be reported by the most appropriate person without any manual intervention. They complete the full clinical workflow going back to order comms and electronic patient records.

Funding has also been made available for an additional 100 home reporting work stations, to support the change in working practices. These ensure that reporting capacity can be maintained during self-isolation from COVID-19. We now have full coverage of home reporting across Cheshire and Merseyside.

## CAMRIN programme updates



### Cancer

We are poised to commence a review of gynaecological cancer imaging. Specialist Radiology Consultants and imaging modality leads will work together to reach a consensus on standards, pathways and protocols to be used across Cheshire and Merseyside. Training will also be provided where it is required.

The colorectal cancer imaging delivery group are currently reviewing **the standards for CT Colonography** published by the British Society of Gastrointestinal and Abdominal Radiology, with a view to adopting all or part of them across the network.

Imaging plays a crucial part in early diagnosis of cancer and CAMRIN are supporting the development of specific and non-specific Rapid Diagnostic Services across Cheshire and Merseyside.

A Radiology Clinical Reference Group has been formed, to provide expert clinical and professional opinion and advice on a wide range of radiological topics and the transformation projects that fall within CAMRIN, to ensure co-ordination and consistency of clinical practice wherever imaging investigations are undertaken and to plan the implementation of recommendations and standards from national bodies, such as Getting It Right First Time (GIRFT), NHS England and NHS Improvement (NHSE/I).



## Clinical Transformation

Having reviewed the projects that fall into the work stream to ensure there is still a requirement for change, it was agreed at both CAMRIN Transitional Management Team (TMT) and the Executive Oversight Group (EOG), that there isn't a pressing need or an appetite across the network to review Paediatric Radiology, therefore this project has been removed from the transformation portfolio of work.

The review of out of hours Interventional Radiology (IR) services is almost at the point where the stakeholders involved will be asked to score a preferred option, with the scoring workshop set to be scheduled in March 2021. The project team for the radiology reporting collaborative is now meeting monthly and agreement has been made to begin with a pilot, the processes for this are due to be worked up this month.



## Data Analytics

The dashboard work with Wellbeing (our current radiology information system provider) is continuing with the Cancer Dashboards being validated by Trusts. We are developing a view of Trust backlogs for the main modalities to support the Adopt and Adapt Recovery.

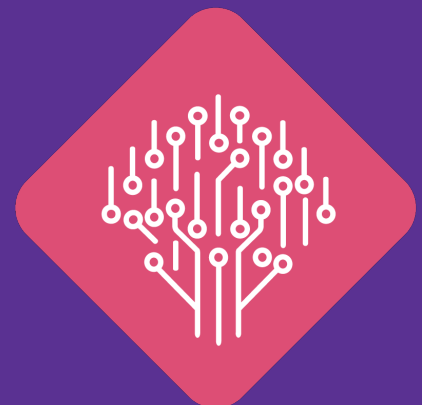
## Digital Delivery

The Digital programme is moving forward with the implementation of Picture archiving and communication system (PACS) reporting across the region. Currently they are starting the technical set up for all Trusts involved and have been providing virtual demonstrations of the PACS reporting workflow over the last few months. The team are really keen to engage with staff and will be providing dates for full virtual training sessions as early as possible for the first and second quarter of next year, so please do book yourself a place!

The team are also monitoring the Brainomix two year pilot to see what benefits Artificial Intelligence (AI) can bring to the wellbeing and health of our patients here in Cheshire and Merseyside. They'll keep you posted on how they are getting on and hope to provide some feedback from the stroke teams in the next bulletin.

It is an exciting time for the other 'Ologies' across the region, as the digital programme team are now in a position to start the setup of a two year pilot of a new storage and retrieval solution. They have five pilot sites ready and waiting to start using the solution and once they have proven the concept they hope to be able to bring on board many more services.

As the Digital Programme Manager, Caroline Jacobs would like to say a huge thank you to everyone involved in the Digital Projects and a Happy New Year to you all!





## Procurement

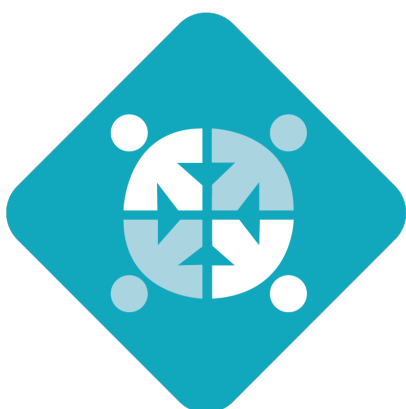
Dr Alex Haworth, Consultant Head and Neck/GI Radiologist and Clinical Service Lead for Radiology at Wirral University Teaching Hospital NHS Foundation Trust has accepted the role of Clinical Lead for the Procurement Programme.

The Radiology Information System (RIS) replacement procurement is currently in process and invitation to tender documentation was sent out to potential providers on the 22nd December 2020. Provider demonstrations will be held the week commencing 22nd February.

Last but not least, benchmarking exercises are in process with framework agreement providers for radiology consumables and contrast media.

## Quality

We are very pleased to confirm that the go live date for the change in the 'Clinical Radiology ALERT Codes' was 17th December 2020 for Liverpool University Hospitals NHS Foundation Trust. These reporting codes are also becoming region-wide across Cheshire and Merseyside, as we progress towards cross-site reporting. The unification of the reporting codes is a small part of the big picture, with the long term vision being region-wide unification and centralisation of requesting investigations, vetting, appointments and reporting to enhance patient experience and quality improvement. These codes have been discussed and approved by the Cheshire and Merseyside Imaging Programme Transitional Management Team Meeting and Departmental Consultant Meetings. Cheshire and Merseyside Radiology Departments will be leading the way nationally with this!



## Workforce

December saw the culmination of the career surveys which were sent out in October 2020. The aim was to gather the real time opinions of radiographers, sonographers and radiologists, from students to consultants, on their chosen career pathways and the factors that determined their career route. In addition we were exploring the respondents' appetite for joint jobs across different trusts. In total we had nearly 260 replies, which is a fantastic response and we'd like to say a huge thank you to everybody who completed the survey.

Work now starts on the collation and analysis of the survey results and we are keen to have the initial findings ready for presentation by the end of this month. This exciting work will be shared with our colleagues across the imaging community and Higher Educational Institutions across the North West.

The next couple of months will also see our local initiatives and projects supporting the work of the NW Diagnostic Radiography Workforce Group. This includes work on international recruitment, clinical placements, HR passports to facilitate cross-trust working and apprenticeships. In addition, members of the PMO team are directly involved with the development of the NW Imaging Workforce Strategy, working with the NW regional NHSE/I Diagnostic Team.

# Looking back at 2020

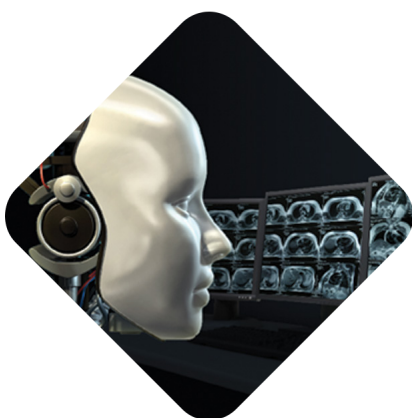
## January

The CAMRIN leadership team attended the National Imaging Network Leadership workshop, to inform the development of the implementation guides being created to support the national strategy for Imaging networks.

CAMRIN PMO developed a review of home reporting workstations previously purchased from Cheshire and Merseyside Cancer Alliance funding.



## February



CAMRIN held its own developmental workshop over two days. The first day being to deliver the following objectives:

- Begin the journey for the CAMRIN Transitional Management Team (TMT) to develop the future function and form of the imaging network
- To agree the vision and values of the network
- To agree the key measureable benefits of the network

The second day was focusing on the opportunities for the use of Artificial Intelligence within Radiology services.

## March

Agreed CAMRIN vision and values following the workshop.

Results of the first CAMRIN staff survey which had the following objectives:

- To understand perceptions of the Network's aims, objectives and priorities
- To gauge staff awareness and understanding of:
  1. The need for change
  2. The benefits of working collaboratively in a Network
- To gain insight into preferred communication and engagement methods
- To capture insight to enable CAMRIN to develop compelling content and messages for the e-bulletin and other communications pieces.

The results of this survey were shared in the [July 2020 bulletin](#).

March 2020 heralded the start of the COVID-19 pandemic and the beginning of the first lockdown. The Trusts within CAMRIN responded quickly by deploying existing desktops for home reporting where possible and CAMRIN PMO also moved to home working which involved adopting new working practices.





## April

CAMRIN featured on the BBC documentary series 'Hospital', specifically; Series 5, Episode 8.

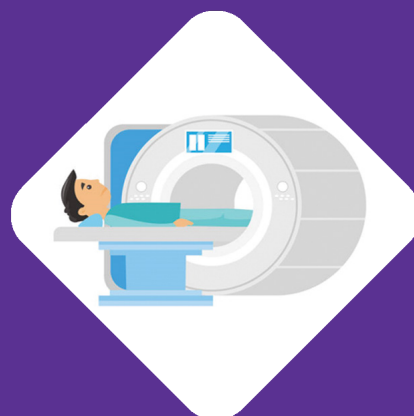
A regional imaging cell was established to support the COVID-19 response and additional mobile x-ray and ultrasound equipment was made available to all Trusts across Cheshire and Merseyside.

Work continued at pace on CAMRIN's digital work stream, to support the changes in working practices due to COVID-19 pandemic and the Transitional Management Team meeting had the highest attendance ever for its first virtual meeting using Microsoft Teams.

## May

Restoration of services began and CAMRIN was allocated a Network CT scanner, which was to be placed on the St Helen's and Knowsley Teaching Hospitals NHS Trust.

Work continued on the Out of Hours Interventional Radiology review and the development of the Radiology Reporting Collaborative.



## June

East Cheshire NHS Trust no longer sits within CAMRIN and has moved to the Greater Manchester region.

There is a massive focus on restoration of services with predictive modelling to support the process of understanding the backlog. Pathway changes are implemented due to COVID-19 and radiology services start seeing an increase from virtual consultations.

Work started on alignment of alert codes across CAMRIN.

## July

CT scanner went live at St Helen's and Knowsley Teaching Hospitals NHS Trust.

Collaborative outsourced reporting contract was agreed to align payments for outsourced radiology reporting across Cheshire and Merseyside, bringing with it a cost saving for all Trusts.

A survey for the radiology reporting collaborative received a great response and will be helpful in informing the project going forward.

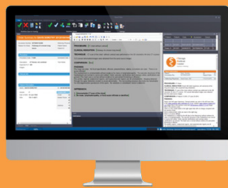




## August

Adopt and Adapt plans were finalised.

Agreement reached for all Trusts to move to PACs reporting which will improve standardisation and quality of reporting across the network.



## September

CAMRIN was successful in three workforce development bids and received funding from Health Education England to support their implementation.

Funding for two more additional CT scanners were awarded along with funding for full coverage of home reporting workstations across Cheshire and Merseyside.

Cheshire and Merseyside Health and Care Partnership agreed to the pump priming funding for the Radiology Out of Hours Hub for a 12 month period.



## October

Brainomix Artificial Intelligence (AI) support tool go live achieved across all sites. This tool identifies trauma to the brain on a CT scan as a result of a stroke.

Second wave of COVID-19 hits Cheshire and Merseyside, however performance is being maintained at pre COVID-19 levels.

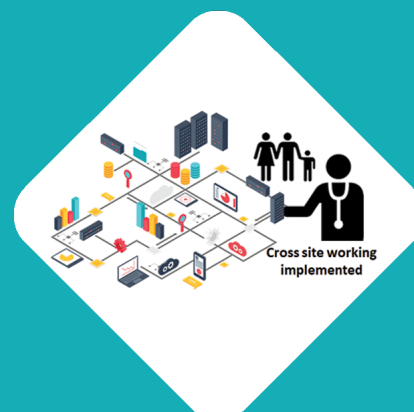
CAMRIN Clinical Reference Group developed to be established early 2021.



## November

Cross site working implemented, this provides the back office processes to enable any Trust to report any image without any manual intervention, completes the full clinical workflow going back to order comms and electronic patient records.

Performance continues to be maintained and Trusts within Cheshire and Merseyside were praised by the North West Regional Medical Director for this during the second wave.





## December

The implementation guides for developing Imaging Networks were published, they are available here: <https://future.nhs.uk/Imaging/grouphome>

Work was completed on the alignment of alert codes and the first Trust went live on implementing them.

Three cancer pathways have been successfully implemented and the projects are now closed (prostate, lung and oesophago-gastric).

### Summary of the benefits achieved



#### Cold COVID sites

Three additional CT scanners placed on 'cold' COVID sites

#### Brainomix AI

The first artificial intelligence support tool for stroke implemented across C&M

#### Reduction in variation

Implementation of best practice cancer pathways

#### Improved patient access

Implementation of the technical solution for cross site working

#### Improved out of hours service

Formalised funding for the Radiology out of hours hub

#### Home reporting work stations

An additional 100 workstations purchased via network funds

#### Workforce development

Successfully awarded monies for three proposals by Health Education England

#### Reduction in variation

Alignment of radiology information system alert codes

#### Radiology clinical reference group

Established a radiology clinical reference group to support C&M



#### Three additional network CT scanners

Increased capacity by up to 30,000 scans a year

#### Additional reporting capacity

Home reporting stations provide system capacity during self isolation

#### Radiology out of hours hub

New infrastructure to be put in place to support the operational processes within the hub

#### Network scanning

Trust's with additional scanning capacity within C&M now share it with Trust's who have a lack of capacity

#### Formalised funding of the C&M radiology out of hours hub

Cost avoidance approx. £2,500,000

#### Single price for outsourced radiology reporting across C&M

Cost saving approx. £80,000

#### Procurement savings

Saving of approx. £330,000 on the purchase of two network CT scanners

#### New funding

Awarded funding from the Health and Care Partnership and the Cancer Alliance to continue network development and transformation



If you would like more information about anything CAMRIN did in 2020 please get in touch with [alexi.shenton@liverpoolft.nhs.uk](mailto:alexi.shenton@liverpoolft.nhs.uk)



[cheshireandmerseysidepartnership.co.uk](http://cheshireandmerseysidepartnership.co.uk)



@C\_MPartnership