



Canadian Wholesale Price List

April 2020

CONFIDENTIAL

Ordering Information	2	Oil Filters.....	25
Motor Oil.....	3	Motorcycle Filters	27
Formula 4-Stroke® Oil	7	Bypass Filtration Systems	27
Synthetic Motorcycle Oil.....	9	Bypass Filtration Adapters	28
Suspension Fluid	11	Oil Analysis.....	28
Diesel Oil	11	Fuel Additives.....	29
Gear Lube	13	Cleaners & Protectants.....	29
Transmission Fluid	15	Coolant	31
Two-Stroke Oil.....	18	Power Steering Fluid	31
Grease.....	20	Miscellaneous Products	31
Hydraulic Oil.....	22	Additional Ordering Information.....	33
Compressor Oil	23		

PRICES AND AVAILABILITY SUBJECT TO CHANGE WITHOUT NOTICE

Errors will be corrected where discovered and AMSOIL reserves the right to revoke any offer or price inadvertently published due to error or omission.

AMSOIL INC. 925 Tower Avenue, Superior, WI 54880

Ordering Information

Ordering Instructions

Place orders for AMSOIL products online (www.amsoil.com), by phone (800-777-7094) or by fax (715-392-5225).

Online Store: www.amsoil.com

Log in to your appropriate Account Zone by entering your account number and password. If you have yet to establish an account, click "Create an Account" at the top of www.amsoil.com and follow the prompts. Once inside your Account Zone, you can either click "Ordering" at the top of the page, which takes you to the EZ Online Order Forms, or you can click the "Online Store" button to browse through AMSOIL products.

Phone: (800) 777-7094

Open Monday-Friday, 7 a.m. to 7 p.m. Central
When calling in your order, tell the AMSOIL Toll-Free Ordering Operator whether you will pick up your order or have it shipped to you.

Fax: (715) 392-5225

Faxes accepted 24 hours a day, 7 days a week

Choosing Your AMSOIL Products

AMSOIL Product Guides and MyAMSOILGarage™

The AMSOIL Product Guides at www.amsoil.com are the fastest way to determine which AMSOIL lubricants, filters and accessories apply to your automotive, heavy-duty or powersports equipment. You can also establish a MyAMSOILGarage account to store vehicle information for future purchases, set email reminders and more. Click the link on www.amsoil.com or visit www.amsoil.com/whymygarage.aspx for details.

AMSOIL Technical Services

The AMSOIL Technical Services Department is available to assist in the selection and application of AMSOIL products. To assist the processing of your inquiry, please have your specific application information ready to relay to the Technical Services staff and be prepared to answer questions regarding your application needs. Call AMSOIL Technical Services at (715) 399-TECH and follow the prompts.

AMSOIL Product Lookup By Code

Code	Page	Code	Page	Code	Page
ABC	20	CPI	29	MCF	9
ADA	15	CTG	18	MCS	10
ADB	30	CTJ	18	MCT	9
ADF	29	CTL	18	MCV	10
ADN	12	CVT	17	MFF	10
ADO	12	DB40	8	MOB	29
ADP	12	DB50	8	MSV	10
ADS	29	DB60	8	MTF	17
AEL	7	DBTF	8	MTG	17
AES	8	DCT	17	MVI	10
AFF	7	DEO	12	MVP	10
AFL	7	DHD	11	MVT	10
AGL	14	DME	12	OEF	5
AGM	15	DRC	30	OEM	5
AHF	8	DTT	11	OES	4
AIO	19	DZF	11	OET	5
AIR	20	EA15K	25	OEZ	5
AIT	19	EAAR	24	OTF	16
ALM	3	EAAU	24	OTL	16
AME	13	EAHD	26	PCH	23
AMO	5	EAL	6	PCI	23
AMR	3	EAO	25	PCJ	23
ANGS	11	EAOM	27	PCK	23
ANGV	11	EAPF	24	PK1	9
ANT	31	EFM	7	PK2	9
AQS	29	EFO	7	PK3	9
ARO	5	FGO	15	PSF	31
ART	17	FGR	15	RD20	6
ASE	8	FLP	30	RD30	6
ASF	8	FLSH	30	RD50	6
ASL	3	FTF	18	RD60	6
ASM	3	FWG	21	RDCB	31
ASO	8	GBS	6	SEI	23
AST	29	GEC	22	SDF	26
ATD	18	GLC	21	SRN	14
ATF	15	GPOR1	20	SRT	14
ATH	22	GPOR2	20	STL	11
ATL	16	GPTR1	21	STM	11
ATM	3	GPTR2	20	SVG	13
ATP	19	GRG	20	SVO	14
AUDT	9	GSF	21	SVT	14
AUPT	9	GVC	21	TCC	19
AUV40	9	GWR	21	TDR	19
AUV50	9	GXC	22	UCL	29
AWG	23	HDBK	10	WCF	7
AWH	23	HDCK	10	WCM	7
AWI	23	HDMB	10	WCT	7
AZF	3	HDMC	10	XLF	4
AZO	3	HDD	13	XLM	4
BHO	22	HPM	18	XLO	4
BMK	27	HVG	22	XLT	4
BRK	6	HVH	22	XLZ	4
CCB	30	HVI	22	ZRF	6
CMP	30	HVJ	22	ZRT	6
COB	29	KIT	28		

Signature Series Synthetic Motor Oil

Engineered for enthusiasts seeking maximum protection and performance throughout drain intervals of up to 40,200 kilometers/700 hours of operation/one year (normal service) in automotive gasoline engines.

Stock No. Units Pkg/Size Wt. Lbs., ea. Wholesale Cost, ea. Cost Per Unit Min. Sugg. Retail, ea.



SAE 0W-20 Synthetic Motor Oil

API Service SN PLUS (Resource Conserving), SM... • ILSAC GF-5, 4... • GM dexos1 Gen 2 • Ford WSS-M2C947-A, WSS-M2C947-B1 • Chrysler MS-6395 • ACEA A1/B1

ASMQTC	-EA	(1) 946-ml. Bottle	2.1	12.10	-	15.65
ASMQTC	-CA	(12) 946-ml. Bottles	25.2	138.00	11.50	186.60
ASM1GC	-EA	(1) 3.78-Litre Bottle	7.9	47.00	-	60.85
ASM1GC	-CA	(4) 3.78-Litre Bottles	31.6	179.00	44.75	241.80
ASM30	-EA	113-Litre Drum*	241.0	1,226.00	-	1,532.50
ASM55	-EA	208-Litre Drum*	432.0	2,179.95	-	2,681.40

SAE 5W-20 Synthetic Motor Oil

API Service SN PLUS (Resource Conserving), SM... • ILSAC GF-5, 4... • GM dexos1 Gen 2 • Ford WSS-M2C930-A, WSS-M2C945-A, WSS-M2C945-B1 • Chrysler MS-6395 • ACEA A1/B1

ALMQTC	-EA	(1) 946-ml. Bottle	2.1	12.10	-	15.65
ALMQTC	-CA	(12) 946-ml. Bottles	25.2	138.00	11.50	186.60
ALM1GC	-EA	(1) 3.78-Litre Bottle	8.0	47.00	-	60.85
ALM1GC	-CA	(4) 3.78-Litre Bottles	32.0	179.00	44.75	241.80
ALM30	-EA	113-Litre Drum*	243.0	1,226.00	-	1,532.50
ALM55	-EA	208-Litre Drum*	435.0	2,179.95	-	2,681.40
ALM27	-EA	1,041-Litre Tote*	2,096.0	10,859.25	-	13,356.90



SAE 0W-30 Synthetic Motor Oil

API Service SN PLUS (Resource Conserving), SM... • ILSAC GF-5, 4... • GM dexos1 Gen 2 • Chrysler MS-6395 • ACEA A1/B1, A5/B5

AZOQTC	-EA	(1) 946-ml. Bottle	2.1	12.10	-	15.65
AZOQTC	-CA	(12) 946-ml. Bottles	25.2	138.00	11.50	186.60
AZO1G	-EA	(1) 3.78-Litre Bottle	7.9	47.00	-	60.85
AZO1G	-CA	(4) 3.78-Litre Bottles	31.6	179.00	44.75	241.80
AZO30	-EA	113-Litre Drum*	243.0	1,226.00	-	1,532.50
AZO55	-EA	208-Litre Drum*	435.8	2,179.95	-	2,681.40



SAE 5W-30 Synthetic Motor Oil

API Service SN PLUS (Resource Conserving), SM... • ILSAC GF-5, 4... • GM dexos1 Gen 2 • Ford WSS-M2C929-A, WSS-M2C946-A, WSS-M2C946-B1 • Chrysler MS-6395 • ACEA A1/B1, A5/B5 • Honda HTO-06

ASLQTC	-EA	(1) 946-ml. Bottle	2.0	12.10	-	15.65
ASLQTC	-CA	(12) 946-ml. Bottles	24.0	138.00	11.50	186.60
ASL1GC	-EA	(1) 3.78-Litre Bottle	7.6	47.00	-	60.85
ASL1GC	-CA	(4) 3.78-Litre Bottles	30.4	179.00	44.75	241.80
ASL30	-EA	113-Litre Drum*	245.3	1,226.00	-	1,532.50
ASL55	-EA	208-Litre Drum*	440.0	2,179.95	-	2,681.40
ASL27	-EA	1,041-Litre Tote*	2,125.0	10,859.25	-	13,356.90



SAE 10W-30 Synthetic Motor Oil

API Service SN PLUS (Resource Conserving), SM... • ILSAC GF-5, 4... • GM 4718M, 6094M, LL-A-025 • Ford WSS-M2C205-A • Chrysler MS-6395 • ACEA A1/B1, A5/B5

ATMQTC	-EA	(1) 946-ml. Bottle	2.1	12.10	-	15.65
ATMQTC	-CA	(12) 946-ml. Bottles	25.2	138.00	11.50	186.60
ATM1G	-EA	(1) 3.78-Litre Bottle	7.9	47.00	-	60.85
ATM1G	-CA	(4) 3.78-Litre Bottles	31.6	179.00	44.75	241.80
ATM30	-EA	113-Litre Drum*	242.3	1,226.00	-	1,532.50
ATM55	-EA	208-Litre Drum*	434.5	2,179.95	-	2,681.40
ATM27	-EA	1,041-Litre Tote*	2,102.0	10,859.25	-	13,356.90



SAE 0W-40 Synthetic Motor Oil

API Service SN PLUS, SM... • Chrysler MS-12633, MS-10725, MS-10850 • Nissan GT-R

AZFQT	-EA	(1) 946-ml. Bottle	2.1	12.10	-	15.65
AZFQT	-CA	(12) 946-ml. Bottles	25.2	138.00	11.50	186.60



SAE 5W-50 Synthetic Motor Oil

API Service SN PLUS, SM... • Ford WSS-M2C931-C (Mustang)

AMRQTC	-EA	(1) 946-ml. Bottle	2.1	12.10	-	15.65
AMRQTC	-CA	(12) 946-ml. Bottles	25.2	138.00	11.50	186.60



XL Synthetic Motor Oil

Delivers exceptional protection in automotive gasoline engines for up to 19,300-kilometer/one-year oil change intervals, or longer when recommended in owners' manuals.

Stock No.	Units	Pkg/Size	Wt. Lbs., ea.	Wholesale Cost, ea.	Cost Per Unit	Min. Sugg. Retail, ea.
-----------	-------	----------	---------------	---------------------	---------------	------------------------

SAE 0W-20 XL Synthetic Motor Oil

API Service SN PLUS (Resource Conserving), SM... • ILSAC GF-5, 4... • GM dexos1 Gen 2 • Ford WSS-M2C947-A, WSS-M2C947-B1 • Chrysler MS-6395 • ACEA A1/B1

XLZQTC	-EA	(1) 946-ml. Bottle	2.0	9.05	-.-	11.75
XLZQTC	-CA	(12) 946-ml. Bottles	24.0	103.20	8.60	139.80
XLZ1GC	-EA	(1) 3.78-Litre Bottle	7.8	35.35	-.-	45.85
XLZ1GC	-CA	(4) 3.78-Litre Bottles	31.2	134.60	33.65	181.80
XLZ30	-EA	113-Litre Drum*	241.1	883.25	-.-	1,104.10
XLZ55	-EA	208-Litre Drum*	432.6	1,552.60	-.-	1,909.75
XLZ27	-EA	1,041-Litre Tote*	2,062.0	7,721.15	-.-	9,497.05

SAE 5W-20 XL Synthetic Motor Oil

API Service SN PLUS (Resource Conserving), SM... • ILSAC GF-5, 4... • GM dexos1 Gen 2 • Ford WSS-M2C945-A, WSS-M2C930-A, WSS-M2C945-B1 • Chrysler MS-6395 • ACEA A1/B1

XLMQTC	-EA	(1) 946-ml. Bottle	2.0	9.05	-.-	11.75
XLMQTC	-CA	(12) 946-ml. Bottles	24.0	103.20	8.60	139.80
XLM1GC	-EA	(1) 3.78-Litre Bottle	7.8	35.35	-.-	45.85
XLM1GC	-CA	(4) 3.78-Litre Bottles	31.2	134.60	33.65	181.80
XLM30	-EA	113-Litre Drum*	241.1	883.25	-.-	1,104.10
XLM55	-EA	208-Litre Drum*	432.6	1,552.60	-.-	1,909.75
XLM27	-EA	1,041-Litre Tote*	2,062.0	7,721.15	-.-	9,497.05

SAE 5W-30 XL Synthetic Motor Oil

API Service SN PLUS (Resource Conserving), SM... • ILSAC GF-5, 4... • GM dexos1 Gen 2 • Ford WSS-M2C946-A, WSS M2C929-A, WSS-M2C946-B1 • Chrysler MS-6395 • ACEA A1/B1

XLFQTC	-EA	(1) 946-ml. Bottle	2.0	9.05	-.-	11.75
XLFQTC	-CA	(12) 946-ml. Bottles	24.0	103.20	8.60	139.80
XLF1GC	-EA	(1) 3.78-Litre Bottle	7.8	35.35	-.-	45.85
XLF1GC	-CA	(4) 3.78-Litre Bottles	31.2	134.60	33.65	181.80
XLF30	-EA	113-Litre Drum*	241.0	883.25	-.-	1,104.10
XLF55	-EA	208-Litre Drum*	432.1	1,552.60	-.-	1,909.75
XLF27	-EA	1,041-Litre Tote*	2,080.0	7,721.15	-.-	9,497.05

SAE 10W-30 XL Synthetic Motor Oil

API Service SN PLUS (Resource Conserving), SM... • ILSAC GF-5, 4... • GM 4718M, 6094M • Ford WSS-M2C205-A • Chrysler MS-6395 • ACEA A1/B1, A5/B5

XLTQTC	-EA	(1) 946-ml. Bottle	2.1	9.05	-.-	11.75
XLTQTC	-CA	(12) 946-ml. Bottles	25.2	103.20	8.60	139.80
XLT1G	-EA	(1) 3.78-Litre Bottle	7.8	35.35	-.-	45.85
XLT1G	-CA	(4) 3.78-Litre Bottles	31.2	134.60	33.65	181.80
XLT30	-EA	113-Litre Drum*	241.1	883.25	-.-	1,104.10
XLT55	-EA	208-Litre Drum*	432.4	1,552.60	-.-	1,909.75
XLT27	-EA	1,041-Litre Tote*	2,088.0	7,721.15	-.-	9,497.05

SAE 10W-40 XL Synthetic Motor Oil

*API Service SN PLUS, SM... • ACEA A1/B1

XLOQT	-EA	(1) 946-ml. Bottle	2.0	9.05	-.-	11.75
XLOQT	-CA	(12) 946-ml. Bottles	24.0	103.20	8.60	139.80
XLO1G	-EA	(1) 3.78-Litre Bottle	7.8	35.35	-.-	45.85
XLO1G	-CA	(4) 3.78-Litre Bottles	31.2	134.60	33.65	181.80
XLO30	-EA	113-Litre Drum*	239.0	883.25	-.-	1,104.10
XLO55	-EA	208-Litre Drum*	429.0	1,552.60	-.-	1,909.75
XLO27	-EA	1,041-Litre Tote*	2,073.0	7,721.15	-.-	9,497.05

OE Synthetic Motor Oil

Advanced engine protection and performance for the longer drain intervals recommended by original equipment manufacturers (OEMs).

Stock No.	Units	Pkg/Size	Wt. Lbs., ea.	Wholesale Cost, ea.	Cost Per Unit	Min. Sugg. Retail, ea.
-----------	-------	----------	---------------	---------------------	---------------	------------------------

SAE 0W-16 OE Synthetic Motor Oil

API Service SN

OESQT	-EA	(1) 946-ml. Bottle	2.0	6.85	-.-	8.90
OESQT	-CA	(12) 946-ml. Bottles	24.0	78.00	6.50	105.60



Stock No.	Units	Pkg/Size	Wt. Lbs., ea.	Wholesale Cost, ea.	Cost Per Unit	Min. Sugg. Retail, ea.
SAE 0W-20 OE Synthetic Motor Oil						
<i>API Service SN PLUS (Resource Conserving), SM... • ILSAC GF-5, 4... • GM dexos1 Gen 2 • Chrysler MS-6395 • Ford WSS-M2C947-A, WSS-M2C947-B1 • ACEA A1/B1</i>						
OEZQTC	-EA	(1) 946-ml. Bottle	2.0	6.85	-.	8.90
OEZQTC	-CA	(12) 946-ml. Bottles	24.0	78.00	6.50	105.60
OEZ1GC	-EA	(1) 3.78-Litre Bottle	8.0	26.65	-.	34.65
OEZ1GC	-CA	(4) 3.78-Litre Bottles	32.0	101.40	25.35	137.00
OEZ30	-EA	113-Litre Drum*	240.0	708.70	-.	885.90
OEZ55	-EA	208-Litre Drum*	430.0	1,232.75	-.	1,516.35
OEZ27	-EA	1,041-Litre Tote*	2,074.0	6,123.60	-.	7,532.05



SAE 5W-20 OE Synthetic Motor Oil						
<i>API Service SN PLUS (Resource Conserving), SM... • ILSAC GF-5, 4... • GM dexos1 Gen 2 • Ford WSS-M2C930-A, WSS-M2C945-A, WSS-M2C945-B1 • Chrysler MS-6395</i>						
OEMQTC	-EA	(1) 946-ml. Bottle	2.0	6.85	-.	8.90
OEMQTC	-CA	(12) 946-ml. Bottles	24.0	78.00	6.50	105.60
OEM1GC	-EA	(1) 3.78-Litre Bottle	8.0	26.65	-.	34.65
OEM1GC	-CA	(4) 3.78-Litre Bottles	32.0	101.40	25.35	137.00
OEM30	-EA	113-Litre Drum*	240.0	708.70	-.	885.90
OEM55	-EA	208-Litre Drum*	430.0	1,232.75	-.	1,516.35
OEM27	-EA	1,041-Litre Tote*	2,073.0	6,123.60	-.	7,532.05



SAE 5W-30 OE Synthetic Motor Oil						
<i>API Service SN PLUS (Resource Conserving), SM... • ILSAC GF-5, 4... • GM dexos1 Gen 2 • Ford WSS-M2C946-A, WSS-M2C929-A, WSS-M2C946-B1 • Chrysler MS-6395</i>						
OEFQTC	-EA	(1) 946-ml. Bottle	2.0	6.85	-.	8.90
OEFQTC	-CA	(12) 946-ml. Bottles	24.0	78.00	6.50	105.60
OEF1GC	-EA	(1) 3.78-Litre Bottle	8.0	26.65	-.	34.65
OEF1GC	-CA	(4) 3.78-Litre Bottles	32.0	101.40	25.35	137.00
OEF30	-EA	113-Litre Drum*	240.0	708.70	-.	885.90
OEF55	-EA	208-Litre Drum*	430.0	1,232.75	-.	1,516.35
OEF27	-EA	1,041-Litre Tote*	2,074.0	6,123.60	-.	7,532.05



SAE 10W-30 OE Synthetic Motor Oil						
<i>API Service SN PLUS (Resource Conserving), SM... • ILSAC GF-5, 4... • GM 4718M, 6094M • Ford WSS-M2C205-A • Chrysler MS-6395 • ACEA A1/B1, A5/B5</i>						
OETQTC	-EA	(1) 946-ml. Bottle	2.0	6.85	-.	8.90
OETQTC	-CA	(12) 946-ml. Bottles	24.0	78.00	6.50	105.60
OET30	-EA	113-Litre Drum*	241.0	708.70	-.	885.90
OET55	-EA	208-Litre Drum*	432.0	1,232.75	-.	1,516.35
OET27	-EA	1,041-Litre Tote*	2,083.0	6,123.60	-.	7,532.05

Premium Protection Synthetic Motor Oil

Ideal for gasoline engines and diesel applications not equipped with diesel particulate filters (DPF), where the extra protection of a high-zinc formula is desired.



Stock No.	Units	Pkg/Size	Wt. Lbs., ea.	Wholesale Cost, ea.	Cost Per Unit	Min. Sugg. Retail, ea.
SAE 10W-40 Premium Protection Synthetic Motor Oil						
<i>API CI-4+/CI-4/CH-4/CF/CF-2/SL/SJ • ISO-L-EMA • Caterpillar ECF-1 • JASO MA (Motorcycle) • MAN 271/3275 • MTU Type 2 • Cummins 20071/20072/20076/20077 • Volvo, VDS-2, VDS • Mack EO-M+, EO-M • ACEA A3/B3/E3/E5 • MB 228.1, 228.3, 229.1 • DDC 93K214</i>						
AMOQTC	-EA	(1) 946-ml. Bottle	2.1	11.20	-.	14.50
AMOQTC	-CA	(12) 946-ml. Bottles	25.2	127.80	10.65	172.80
AMO1G	-EA	(1) 3.78-Litre Bottle	8.0	43.55	-.	56.40
AMO1G	-CA	(4) 3.78-Litre Bottles	32.0	165.80	41.45	224.00
AMOTP	-EA	(1) 9.45-Litre Bottle	19.5	107.45	-.	137.10
AMOTP	-CA	(2) 9.45-Litre Bottles	39.0	204.60	102.30	272.20
AMO30	-EA	113-Litre Drum*	241.9	1,153.25	-.	1,441.60
AMO55	-EA	208-Litre Drum*	433.8	2,048.40	-.	2,519.55



SAE 20W-50 Premium Protection Synthetic Motor Oil						
<i>API CI-4+/CI-4/CH-4/CF/CF-2/SL/SJ • ISO-L-EMA • Caterpillar ECF-1 • JASO MA (Motorcycle) • MAN 271/3275 • MTU Type 2 • Cummins 20071/20072/20076/20077 • Volvo, VDS-2, VDS • Mack EO-M+, EO-M • ACEA A3/B3/E3/E5 • MB 228.1, 228.3, 229.1 • DDC 93K214</i>						
AROQTC	-EA	(1) 946-ml. Bottle	2.1	11.30	-.	14.65
AROQTC	-CA	(12) 946-ml. Bottles	25.2	129.00	10.75	174.60
ARO1G	-EA	(1) 3.78-Litre Bottle	8.1	44.05	-.	57.05
ARO1G	-CA	(4) 3.78-Litre Bottles	32.4	167.80	41.95	226.60
ARO16	-EA	61-Litre Keg*	132.9	656.85	-.	840.80
ARO30	-EA	113-Litre Drum*	245.3	1,169.25	-.	1,461.60
ARO55	-EA	208-Litre Drum*	440.0	2,076.90	-.	2,554.65
ARO27	-EA	1,041-Litre Tote*	2,115.0	10,342.90	-.	12,721.80

*Not stocked in all distribution centers. Call for availability.

†Product cannot be shipped air freight or parcel post.

Z-ROD™ Synthetic Motor Oil

High-zinc, high-phosphorus formulation engineered specifically for classic cars and performance vehicles.

Stock No.	Units	Pkg/Size	Wt. Lbs., ea.	Wholesale Cost, ea.	Cost Per Unit	Min. Sugg. Retail, ea.
SAE 10W-30 Z-ROD Synthetic Motor Oil						
API SL, SJ...						
ZRTQTC	-EA	(1) 946-ml. Bottle	2.1	10.95	-	14.15
ZRTQTC	-CA	(12) 946-ml. Bottles	25.2	124.80	10.40	168.60
SAE 20W-50 Z-ROD Synthetic Motor Oil						
API SL, SJ...						
ZRFQTC	-EA	(1) 946-ml. Bottle	2.1	11.35	-	14.70
ZRFQTC	-CA	(12) 946-ml. Bottles	25.2	129.60	10.80	175.20

DOMINATOR® Synthetic Racing Oil

Superior performance and maximum protection in high-performance and racing applications.

Stock No.	Units	Pkg/Size	Wt. Lbs., ea.	Wholesale Cost, ea.	Cost Per Unit	Min. Sugg. Retail, ea.
DOMINATOR SAE 5W-20 Synthetic Racing Oil						
RD20QT	-EA	(1) 946-ml. Bottle	2.0	13.45	-	17.40
RD20QT	-CA	(12) 946-ml. Bottles	24.0	153.60	12.80	207.60
RD2055	-EA	208-Litre Drum*	431.0	2,521.10	-	3,101.00
DOMINATOR SAE 10W-30 Synthetic Racing Oil						
RD30QT	-EA	(1) 946-ml. Bottle	2.0	13.10	-	16.95
RD30QT	-CA	(12) 946-ml. Bottles	24.0	149.40	12.45	202.20
RD3055	-EA	208-Litre Drum*	433.0	2,444.95	-	3,007.30
DOMINATOR SAE 15W-50 Synthetic Racing Oil						
RD50QT	-EA	(1) 946-ml. Bottle	2.1	13.75	-	17.75
RD50QT	-CA	(12) 946-ml. Bottles	25.2	156.60	13.05	211.80
RD501G	-EA	(1) 3.78-Litre Bottle	8.0	53.65	-	69.35
RD501G	-CA	(4) 3.78-Litre Bottles	32.0	204.20	51.05	275.80
RD5055	-EA	208-Litre Drum*	435.0	2,575.65	-	3,168.10
DOMINATOR SAE 60 Synthetic Racing Oil						
RD60QT	-EA	(1) 946-ml. Bottle	2.1	14.15	-	18.30
RD60QT	-CA	(12) 946-ml. Bottles	25.2	161.40	13.45	218.40

DOMINATOR® 20W-50 Competition Oil

Engineered for modified, competition diesel engines and the high-horsepower demands of sled pulling, dyno runs and drag racing.

Stock No.	Units	Pkg/Size	Wt. Lbs., ea.	Wholesale Cost, ea.	Cost Per Unit	Min. Sugg. Retail, ea.
API CK-4, CJ-4, CI-4+, CH-4 • Cummins CES 20081, CES 20086 • Mack EO-O, EOS4.5 • Volvo VDS3, VDS4, VDS4.5 • Detroit Diesel 93K218, 93K215, 93K214 • Caterpillar ECF-2, ECF-3, ECF-1-a • Chrysler MS 10902 • Ford WSS-M2C171-F1						
DCOQT	-EA	(1) 946-ml. Bottle	2.1	11.50	-	14.90
DCOQT	-CA	(12) 946-ml. Bottles	25.2	131.40	10.95	177.60
DCO1G	-EA	(1) 3.78-Litre Bottle	8.0	44.80	-	58.00
DCO1G	-CA	(4) 3.78-Litre Bottles	32.0	170.60	42.65	230.40

Briggs & Stratton Synthetic 4T Racing Oil

Formulated by AMSOIL specifically for stock and modified small-displacement air-cooled racing engines and recommended for any four-stroke air-cooled competition engine.

Stock No.	Units	Pkg/Size	Wt. Lbs., ea.	Wholesale Cost, ea.	Cost Per Unit	Min. Sugg. Retail, ea.
GBS2960	-EA	(1) 946-ml. Bottle	2.1	14.25	-	19.94
GBS2960	-CA	(12) 946-ml. Bottles	25.2	170.94	14.25	239.32

Break-In Oil

Allows for quick and efficient piston ring seating in new and rebuilt high-performance and racing engines.

Stock No.	Units	Pkg/Size	Wt. Lbs., ea.	Wholesale Cost, ea.	Cost Per Unit	Min. Sugg. Retail, ea.
BRKQTC	-EA	(1) 946-ml. Bottle	2.1	8.35	-	10.85
BRKQTC	-CA	(12) 946-ml. Bottles	25.2	95.40	7.95	129.00

Engine Assembly Lube

Formulated to cling to engine parts and provide exceptional wear protection in newly built or rebuilt high-performance, racing and other four-stroke engines.

Stock No.	Units	Pkg/Size	Wt. Lbs., ea.	Wholesale Cost, ea.	Cost Per Unit	Min. Sugg. Retail, ea.
EALTB	-EA	(1) 118-ml. Tube	0.3	9.20	-	12.20
EALTB	-CA	(12) 118-ml. Tubes	3.6	105.00	8.75	145.20

*Not stocked in all distribution centers. Call for availability.

†Product cannot be shipped air freight or parcel post.



European Car Formula Synthetic Motor Oil

Specially formulated for the lubrication needs of European gasoline and diesel cars and light trucks.

Stock No.	Units	Pkg/Size	Wt. Lbs., ea.	Wholesale Cost, ea.	Cost Per Unit	Min. Sugg. Retail, ea.
European Car Formula 5W-30 Improved Emissions System Protection Synthetic Motor Oil						
<i>Audi/VW 504.00/507.00 • MB 229.51 • BMW LL-04 • Porsche C30 • Chrysler MS-11106 • ACEA C3 • GM dexos2 • API SN</i>						
AELQTC	-EA	(1) 946-ml. Bottle	2.1	12.90	-.	16.65
AELQTC	-CA	(12) 946-ml. Bottles	25.2	147.00	12.25	198.60
AEL1G	-EA	(1) 3.78-Litre Bottle	8.0	50.50	-.	65.30
AEL1G	-CA	(4) 3.78-Litre Bottles	32.0	192.20	48.05	259.60
AEL30	-EA	113-Litre Drum*	244.0	1,350.35	-.	1,687.95
AEL55	-EA	208-Litre Drum*	438.0	2,408.65	-.	2,962.70

European Car Formula 0W-40 Classic Emissions System Protection Synthetic Motor Oil

ACEA A3/B3, A3/B4 • API SN/SM... • BMW LL-01 • Mercedes-Benz 229.1/229.3/229.5 • Porsche A40 • Renault 0710, 0700 • Audi/VW 502.00, 505.00

EFOQTC	-EA	(1) 946-ml. Bottle	2.1	10.75	-.	13.90
EFOQTC	-CA	(12) 946-ml. Bottles	25.2	122.40	10.20	165.60

European Car Formula 5W-40 Improved Emissions System Protection Synthetic Motor Oil

ACEA C3 • API SN, SM, CF... • BMW Longlife-04 • Chrysler MS-10850 (supersedes MS-10896) • Ford WSS-M2C917-A • GM dexos2 (supersedes LL-A-025 and LL-B-025) • MB-Approval 229.51 • Porsche A40 • Audi/VW 502.00/505.01 • Renault 0700, 0710

AFLQTC	-EA	(1) 946-ml. Bottle	2.1	11.85	-.	15.30
AFLQTC	-CA	(12) 946-ml. Bottles	25.2	135.00	11.25	182.40
AFL1GC	-EA	(1) 3.78-Litre Bottle	8.0	46.00	-.	59.55
AFL1GC	-CA	(4) 3.78-Litre Bottles	32.0	175.20	43.80	236.60
AFL30	-EA	113-Litre Drum*	244.0	1,223.55	-.	1,529.50
AFL55	-EA	208-Litre Drum*	438.0	2,175.55	-.	2,676.00

European Car Formula 5W-40 Classic Emissions System Protection Synthetic Motor Oil

ACEA A3/B3, A3/B4 • API SN/SM... • BMW LL-01 • MB 229.3/229.5 • Porsche A40 • Renault 0710, 0700 • Audi/VW 502.00/505.00

EFMQTC	-EA	(1) 946-ml. Bottle	2.1	8.60	-.	11.15
EFMQTC	-CA	(12) 946-ml. Bottles	25.2	97.80	8.15	132.60
EFM1GC	-EA	(1) 3.78-Litre Bottle	8.0	33.50	-.	43.50
EFM1GC	-CA	(4) 3.78-Litre Bottles	32.0	127.60	31.90	172.40
EFM30	-EA	113-Litre Drum*	241.0	921.60	-.	1,152.00
EFM55	-EA	208-Litre Drum*	431.0	1,624.85	-.	1,998.60
EFM27	-EA	1,041-Litre Tote*	2,076.0	8,088.25	-.	9,948.60

Formula 4-Stroke™ Power Sports Oil

Specially formulated for four-stroke recreational motors, ATVs and snowmobiles.

Stock No.	Units	Pkg/Size	Wt. Lbs., ea.	Wholesale Cost, ea.	Cost Per Unit	Min. Sugg. Retail, ea.
<i>API Service SG, SJ, SL/CF, SM • JASO MA/MA2 • ISO-L-EMA2</i>						
AFFQTC	-EA	(1) 946-ml. Bottle	2.0	12.90	-.	16.65
AFFQTC	-CA	(12) 946-ml. Bottles	24.0	147.00	12.25	198.60
AFF30	-EA	113-Litre Drum*	240.0	1,346.65	-.	1,683.35
AFF55	-EA	208-Litre Drum*	430.4	2,403.30	-.	2,956.15

Synthetic Marine Engine Oil

Formulated specifically for use in four-stroke gasoline-fueled engines used in marine applications.

Stock No.	Units	Pkg/Size	Wt. Lbs., ea.	Wholesale Cost, ea.	Cost Per Unit	Min. Sugg. Retail, ea.
10W-30 Synthetic Marine Engine Oil						
<i>API SM • NMMA FC-W Catalyst Compatible (Registration #FC-00850T) • JASO MA</i>						
WCTQTC	-EA	(1) 946-ml. Bottle	2.0	10.95	-.	14.15
WCTQTC	-CA	(12) 946-ml. Bottles	24.0	124.80	10.40	168.60
WCT55	-EA	208-Litre Drum*	432.5	2,013.10	-.	2,476.15
10W-40 Synthetic Marine Engine Oil						
<i>API SM • NMMA FC-W Catalyst Compatible (Registration #FC-00833T) • JASO MA</i>						
WCFQTC	-EA	(1) 946-ml. Bottle	2.0	11.85	-.	15.30
WCFQTC	-CA	(12) 946-ml. Bottles	24.0	135.00	11.25	182.40
WCF55	-EA	208-Litre Drum*	433.3	2,196.45	-.	2,701.70
25W-40 Synthetic-Blend Marine Engine Oil						
<i>API SM • NMMA FC-W Catalyst Compatible (Registration #FC-11825T)</i>						
WCMQTC	-EA	(1) 946-ml. Bottle	2.0	9.20	-.	12.20
WCMQTC	-CA	(12) 946-ml. Bottles	24.0	105.00	8.75	145.20

Synthetic Small Engine Oil

Helps preserve engine power, reduce oil consumption and reduce maintenance in small engines used in severe service.



Stock No.	Units	Pkg/Size	Wt. Lbs., ea.	Wholesale Cost, ea.	Cost Per Unit	Min. Sugg. Retail, ea.
-----------	-------	----------	---------------	---------------------	---------------	------------------------

5W-30 Synthetic Small Engine Oil

API SL, SJ, SH, SG • API CF, CD • JASO MA/MA2

AESQT	-EA	(1) 946-ml. Bottle	2.0	9.20	-.	11.95
AESQT	-CA	(12) 946-ml. Bottles	24.0	105.00	8.75	142.20

10W-30 Synthetic Small Engine Oil

API SL, SJ, SH, SG • API CF, CD • JASO MA/MA2

ASEQTC	-EA	(1) 946-ml. Bottle	2.0	9.20	-.	11.95
ASEQTC	-CA	(12) 946-ml. Bottles	24.0	105.00	8.75	142.20
ASE1G	-EA	(1) 3.78-Litre Bottle	8.3	35.85	-.	46.45
ASE1G	-CA	(4) 3.78-Litre Bottles	33.0	136.40	34.10	184.20
ASE05	-EA	18.9-Litre Pail	39.0	167.65	-.	223.05

10W-40 Synthetic Small Engine Oil

API SL, SJ, SH, SG • API CF, CD • JASO MA/MA2

ASFQT	-EA	(1) 946-ml. Bottle	2.1	9.75	-.	12.60
ASFQT	-CA	(12) 946-ml. Bottles	25.2	111.00	9.25	150.00
ASF1G	-EA	(1) 3.78-Litre Bottle	8.0	37.90	-.	49.10
ASF1G	-CA	(4) 3.78-Litre Bottles	32.0	144.20	36.05	194.80
ASF05	-EA	18.9-Litre Pail	39.0	177.45	-.	236.05

20W-50 Zero-Turn Synthetic Hydrostatic Transmission Fluid

Fights wear to deliver smooth control and responsive power in zero-turn hydrostatic mowers.

Stock No.	Units	Pkg/Size	Wt. Lbs., ea.	Wholesale Cost, ea.	Cost Per Unit	Min. Sugg. Retail, ea.
-----------	-------	----------	---------------	---------------------	---------------	------------------------

API SM, SL, SJ, SH, SG



AHFQT	-EA	(1) 946-ml. Bottle	2.1	12.15	-.	15.70
AHFQT	-CA	(12) 946-ml. Bottles	25.2	138.60	11.55	187.20
AHF1G	-EA	(1) 3.78-Litre Bottle	8.0	47.55	-.	61.50
AHF1G	-CA	(4) 3.78-Litre Bottles	32.0	181.00	45.25	244.40
AHF05	-EA	18.9-Litre Pail	40.0	223.55	-.	297.40

Synthetic Dirt Bike Oil

Delivers confidence in clutch feel, maximum horsepower and superior wear protection in all types of four-stroke dirt bikes.

Stock No.	Units	Pkg/Size	Wt. Lbs., ea.	Wholesale Cost, ea.	Cost Per Unit	Min. Sugg. Retail, ea.
-----------	-------	----------	---------------	---------------------	---------------	------------------------

10W-40 Synthetic Dirt Bike Oil

JASO MA • API SG, SJ, SH, SL

DB40QTC	-EA	(1) 946-ml. Bottle	2.0	12.55	-.	17.45
DB40QTC	-CA	(12) 946-ml. Bottles	24.0	143.40	11.95	208.20

10W-50 Synthetic Dirt Bike Oil

JASO MA • API SG, SJ, SH, SL

DB50QTC	-EA	(1) 946-ml. Bottle	2.0	13.55	-.	18.85
DB50QTC	-CA	(12) 946-ml. Bottles	24.0	154.80	12.90	225.00

10W-60 Synthetic Dirt Bike Oil

JASO MA • API SG, SJ, SH, SL

DB60QT	-EA	(1) 946-ml. Bottle	2.0	13.90	-.	19.25
DB60QT	-CA	(12) 946-ml. Bottles	24.0	158.40	13.20	229.80

Synthetic Dirt Bike Transmission Fluid

Provides confident clutch feel. Protects against clutch and transmission wear.

Stock No.	Units	Pkg/Size	Wt. Lbs., ea.	Wholesale Cost, ea.	Cost Per Unit	Min. Sugg. Retail, ea.
-----------	-------	----------	---------------	---------------------	---------------	------------------------

DBTFQT	-EA	(1) 946-ml. Bottle	2.0	10.95	-.	15.20
DBTFQT	-CA	(12) 946-ml. Bottles	24.0	124.80	10.40	181.20



Synthetic ATV/UTV Motor Oil

Formulated to provide upgraded performance and protection compared to original equipment manufacturer-branded oils for hard-working and performance ATVs and UTVs.



Stock No.	Units	Pkg/Size	Wt. Lbs., ea.	Wholesale Cost, ea.	Cost Per Unit	Min. Sugg. Retail, ea.
10W-40 Synthetic ATV/UTV Motor Oil						
AUV40QTC -EA	(1)	946-ml. Bottle	2.0	12.20	-.-	16.95
AUV40QTC -CA	(12)	946-ml. Bottles	24.0	139.20	11.60	202.20
5W-50 Synthetic ATV/UTV Motor Oil						
AUV50QTC -EA	(1)	946-ml. Bottle	2.0	12.15	-.-	16.85
AUV50QTC -CA	(12)	946-ml. Bottles	24.0	138.60	11.55	201.00

ATV/UTV Oil Change Kits

Contains everything needed to perform an oil change on most Polaris UTVs and ATVs using AMSOIL Synthetic ATV/UTV Motor Oil.



Stock No.	Units	Pkg/Size	Wt. Lbs., ea.	Wholesale Cost, ea.	Cost Per Unit	Min. Sugg. Retail, ea.
PK1: ACE 900 • GENERAL 1000 • 2013+ RANGER 900 & 1000 • 2013+ RZR 900 & 1000 – PK2: ATP 330, 500 • Hawkeye 300, 400 • Magnum 325, 330, 500 • RANGER 400 • 2016 & earlier RANGER 500 • Scrambler 500, 850, 1000 • Sportsman 300, 400, 450, 500, 550, 570, 850, 1000 • Trail Blazer 330 • Trail Boss 325, 330 • Xplorer 500 – PK3: Ace 500, 570 • 2017+ RANGER 500 • RANGER 570, 700, 800 • RZR 570, 800 • Sportsman 600, 700, 800						
PK1	-EA	1 Kit	5.0	39.85	-.-	53.90
PK2	-EA	1 Kit	5.0	34.80	-.-	47.00
PK3	-EA	1 Kit	5.0	32.85	-.-	44.40

Synthetic ATV/UTV Transmission & Differential Fluid

Protects heavily loaded, high-torque ATV and UTV gears and bearings against wear, helping enthusiasts protect their machines in the most severe operating conditions.



Stock No.	Units	Pkg/Size	Wt. Lbs., ea.	Wholesale Cost, ea.	Cost Per Unit	Min. Sugg. Retail, ea.
GL-5						
AUDTQTC -EA	(1)	946-ml. Bottle	2.0	13.75	-.-	18.40
AUDTQTC -CA	(12)	946-ml. Bottles	24.0	156.60	13.05	219.60
AUDTPK -EA	(1)	946-ml. Easy-Pack	2.0	15.85	-.-	21.20
AUDTPK -CA	(12)	946-ml. Easy-Packs	24.0	180.60	15.05	253.20

Synthetic ATV/UTV Powertrain Fluid

Purpose-built for transmission/differentials and front drives in Polaris ATVs and UTVs, offering the perfect combination of protection and convenience.



Stock No.	Units	Pkg/Size	Wt. Lbs., ea.	Wholesale Cost, ea.	Cost Per Unit	Min. Sugg. Retail, ea.
AUPTPK -EA	(1)	946-ml. Easy-Pack	2.0	14.70	-.-	19.70
AUPTPK -CA	(12)	946-ml. Easy-Packs	24.0	167.88	13.99	235.08

10W-30 Synthetic Metric Motorcycle Oil

Superior synthetic formulation provides long service life, smooth shifts and maximum protection against engine wear in motorcycles that require 10W-30 motorcycle oil, including those made by Honda, Yamaha, Suzuki and Kawasaki.



Stock No.	Units	Pkg/Size	Wt. Lbs., ea.	Wholesale Cost, ea.	Cost Per Unit	Min. Sugg. Retail, ea.
API Service SH/SG/CF • JASO MA/MA2 (motorcycle wet clutch) • ISO-L-EMA2						
MCTQT -EA	(1)	946-ml. Bottle	2.0	12.30	-.-	15.90
MCTQT -CA	(12)	946-ml. Bottles	24.0	140.40	11.70	189.60
MCT30 -EA		113-Litre Drum*	242.0	1,286.45	-.-	1,608.10
MCT55 -EA		208-Litre Drum*	433.0	2,293.80	-.-	2,821.45

10W-40 Synthetic Metric Motorcycle Oil

Superior synthetic formulation provides long service life, smooth shifts and maximum protection against engine wear in motorcycles that require 10W-40 motorcycle oil, including those made by Honda, Yamaha, Kawasaki, Suzuki, Triumph, Can-Am and BMW.



Stock No.	Units	Pkg/Size	Wt. Lbs., ea.	Wholesale Cost, ea.	Cost Per Unit	Min. Sugg. Retail, ea.
API SM/SG/SL/CF • JASO MA/MA2 (motorcycle wet clutch) • ISO-L-EMA2						
MCFQTC -EA	(1)	946-ml. Bottle	2.1	12.75	-.-	16.45
MCFQTC -CA	(12)	946-ml. Bottles	25.2	145.20	12.10	196.20
MCF1GC -EA	(1)	3.78-Litre Bottle	8.0	49.65	-.-	64.20
MCF1GC -CA	(4)	3.78-Litre Bottles	32.0	189.00	47.25	255.20
MCF30 -EA		113-Litre Drum*	242.1	1,326.30	-.-	1,657.95
MCF55 -EA		208-Litre Drum*	434.2	2,365.35	-.-	2,909.45



15W-50 Synthetic Motorcycle Oil

Superior synthetic formulation provides long service life, smooth shifts and maximum protection against engine wear in motorcycles that require 10W-40 motorcycle oil, including those made by Ducati, BMW, Triumph, KTM, Yamaha and Royal Enfield.

Stock No.	Units	Pkg/Size	Wt. Lbs., ea.	Wholesale Cost, ea.	Cost Per Unit	Min. Sugg. Retail, ea.
<i>API Service SM • JASO MA/MA2 (motorcycle wet clutch)</i>						
MFFQT	-EA	(1) 946-ml. Bottle	2.1	14.10	-	18.90
MFFQT	-CA	(12) 946-ml. Bottles	25.2	160.80	13.40	225.60



20W-40 Synthetic V-Twin Motorcycle Oil

Superior synthetic formulation provides long service life and maximum protection against engine wear in Indian and Victory motorcycles.

Stock No.	Units	Pkg/Size	Wt. Lbs., ea.	Wholesale Cost, ea.	Cost Per Unit	Min. Sugg. Retail, ea.
<i>API SM • JASO MA</i>						
MVIQTC	-EA	(1) 946-ml. Bottle	2.1	12.70	-	16.40
MVIQTC	-CA	(12) 946-ml. Bottles	25.2	144.60	12.05	195.60



15W-60 Synthetic V-Twin Motorcycle Oil

Superior synthetic formulation provides long service life and maximum protection against engine wear in Indian and Victory motorcycles.

Stock No.	Units	Pkg/Size	Wt. Lbs., ea.	Wholesale Cost, ea.	Cost Per Unit	Min. Sugg. Retail, ea.
MSVQT	-EA	(1) 946-ml. Bottle	2.1	14.20	-	19.00
MSVQT	-CA	(12) 946-ml. Bottles	25.2	162.00	13.50	226.80



20W-50 Synthetic V-Twin Motorcycle Oil

Superior synthetic formulation provides long service life and maximum protection against engine wear in Harley-Davidson, Buell, Ducati, Aprilia, BMW and other motorcycle engines, primaries and transmissions.

Stock No.	Units	Pkg/Size	Wt. Lbs., ea.	Wholesale Cost, ea.	Cost Per Unit	Min. Sugg. Retail, ea.
<i>API Service SG, SL/CF, CG-4 • JASO MA/MA2 (motorcycle wet clutch) • ISO-L-EMA2</i>						
MCVQTC	-EA	(1) 946-ml. Bottle	2.1	12.80	-	16.55
MCVQTC	-CA	(12) 946-ml. Bottles	25.2	145.80	12.15	197.40
MCV1GC	-EA	(1) 3.78-Litre Bottle	8.0	50.15	-	64.90
MCV1GC	-CA	(4) 3.78-Litre Bottles	32.0	191.00	47.75	258.00
MCV30	-EA	113-Litre Drum*	242.9	1,343.15	-	1,679.00
MCV55	-EA	208-Litre Drum*	435.7	2,397.75	-	2,949.30



V-Twin Oil Change Kits

Combines everything needed to perform an oil change on most Harley-Davidson* motorcycles, including 20W-50 Synthetic V-Twin Motorcycle Oil, AMSOIL Motorcycle Oil Filter and O-ring. Fitment info: HDCK, HDBK: most 1999-2016 Harley-Davidson motorcycles (HDCK includes chrome filter; HDBK includes black filter) HDMC, HDMB: most 2017-present Harley-Davidson motorcycles (HDMC includes chrome filter; HDMB includes black filter).

Stock No.	Units	Pkg/Size	Wt. Lbs., ea.	Wholesale Cost, ea.	Cost Per Unit	Min. Sugg. Retail, ea.
HDCK	-EA	1 Kit	9.5	70.85	-	95.75
HDBK	-EA	1 Kit	9.5	67.70	-	91.45
HDMC	-EA	1 Kit	11.6	84.05	-	113.55
HDMB	-EA	1 Kit	11.6	80.55	-	108.75



SAE 60 Synthetic V-Twin Motorcycle Oil

Superior synthetic formulation provides long service life and maximum protection against engine wear in big-bore, air-cooled motorcycle engines, including Harley-Davidson Panhead, Shovelhead and Knucklehead.

Stock No.	Units	Pkg/Size	Wt. Lbs., ea.	Wholesale Cost, ea.	Cost Per Unit	Min. Sugg. Retail, ea.
<i>API Service SG, SL/CF, GL-1 • JASO MA/MA2 (motorcycle wet clutch) • ISO-L-EMA2</i>						
MCSQT	-EA	(1) 946-ml. Bottle	2.0	13.45	-	17.40
MCSQT	-CA	(12) 946-ml. Bottles	24.0	153.60	12.80	207.60



Synthetic V-Twin Transmission Fluid

Helps quiet V-twin transmission noise and enable smooth shifts.

Stock No.	Units	Pkg/Size	Wt. Lbs., ea.	Wholesale Cost, ea.	Cost Per Unit	Min. Sugg. Retail, ea.
MVTQTC	-EA	(1) 946-ml. Bottle	2.1	14.10	-	18.90
MVTQTC	-CA	(12) 946-ml. Bottles	25.2	160.80	13.40	225.60



Synthetic V-Twin Primary Fluid

Delivers consistent clutch feel and helps riders easily find neutral.

Stock No.	Units	Pkg/Size	Wt. Lbs., ea.	Wholesale Cost, ea.	Cost Per Unit	Min. Sugg. Retail, ea.
MVPQTC	-EA	(1) 946-ml. Bottle	2.1	12.45	-	16.70
MVPQTC	-CA	(12) 946-ml. Bottles	25.2	142.20	11.85	199.20

*Not stocked in all distribution centers. Call for availability.

†Product cannot be shipped air freight or parcel post.

Shock Therapy™ Suspension Fluid

Controls friction, heat, wear, foaming and scuffing in suspension components.



Stock No.	Units	Pkg/Size	Wt. Lbs., ea.	Wholesale Cost, ea.	Cost Per Unit	Min. Sugg. Retail, ea.
Shock Therapy Suspension Fluid #5 Light						
STLQT	-EA	(1) 946-ml. Bottle	1.9	14.55	-.	18.85
STLQT	-CA	(12) 946-ml. Bottles	22.8	166.20	13.85	225.00
STL05	-EA	18.9-Litre Pail	37.7	268.15	-.	356.70
Shock Therapy Suspension Fluid #10 Medium						
STMQT	-EA	(1) 946-ml. Bottle	2.1	14.35	-.	18.55
STMQT	-CA	(12) 946-ml. Bottles	25.2	163.80	13.65	221.40
STM05	-EA	18.9-Litre Pail	38.1	263.90	-.	351.05

Synthetic Stationary Natural Gas Engine Oil

Delivers continuous protection in stationary four-stroke and select two-stroke natural gas engines requiring a low ash (<0.5%) oil.

Stock No.	Units	Pkg/Size	Wt. Lbs., ea.	Wholesale Cost, ea.	Cost Per Unit	Min. Sugg. Retail, ea.
<i>API CF • SAE (20W) 40 • Low Ash</i>						
ANGS05	-EA	18.9-Litre Pail	39.2	251.10	-.	334.00
ANGS55	-EA	208-Litre Drum*	435.7	2,559.75	-.	3,148.50
ANGS27	-EA	1,041-Litre Tote*	2,074.0	12,753.10	-.	15,686.35

Synthetic Vehicular Natural Gas Engine Oil

Superior protection and performance in vehicular natural gas engines calling for a 15W-40 low-ash engine oil.

Stock No.	Units	Pkg/Size	Wt. Lbs., ea.	Wholesale Cost, ea.	Cost Per Unit	Min. Sugg. Retail, ea.
<i>Cummins CES 20074 • API CF • SAE 15W-40 • Low Ash</i>						
ANGV05	-EA	18.9-Litre Pail	39.2	198.00	-.	263.35
ANGV55	-EA	208-Litre Drum*	435.7	1,973.05	-.	2,426.95
ANGV27	-EA	1,041-Litre Tote*	2,074.0	9,823.00	-.	12,082.35

Signature Series Synthetic Diesel Oil

The top tier of AMSOIL protection and performance for diesel engines. Provides 6X more engine protection.¹

Stock No.	Units	Pkg/Size	Wt. Lbs., ea.	Wholesale Cost, ea.	Cost Per Unit	Min. Sugg. Retail, ea.
5W-30 Max-Duty Synthetic Diesel Oil						
<i>API CK-4/SN PLUS, CJ-4, CI-4+, CF • ACEA E9, E7, E6 • Mack EOS-4.5, EO-O • Detroit Diesel DFS 93K222, DDC 93K218, 93K215, 93K214 • Caterpillar ECF-3, ECF-2, ECF-1-a • Cummins CES20086, CES20081 • Volvo VDS-4.5, VDS-4, VDS-3 • MB 228.51, 228.31 • MTU Type 3.1, 2.1, II, I • MAN 3677, 3575 • JASO DH-2 • Renault RLD-4, RLD-3 • Deutz DQC IV-10 LA, DQC III-10 LA • Scania LA-2 • Chrysler MS 10902 • Ford WSS-M2C214-B1</i>						
DHDQT	-EA	(1) 946-ml. Bottle	2.0	11.55	-.	15.00
DHDQT	-CA	(12) 946-ml. Bottles	24.0	132.00	11.00	178.80
DHD1G	-EA	(1) 3.78-Litre Bottle	8.0	45.45	-.	58.80
DHD1G	-CA	(4) 3.78-Litre Bottles	32.0	173.00	43.25	233.60
DHDTP	-EA	(1) 9.45-Litre Bottle	19.5	112.10	-.	143.00
DHDTP	-CA	(2) 9.45-Litre Bottles	39.0	213.50	106.75	284.00
DHD30	-EA	113-Litre Drum*	241.0	1,180.75	-.	1,475.95
DHD55	-EA	208-Litre Drum*	431.0	2,097.25	-.	2,579.65
DHD27	-EA	1,041-Litre Tote*	2,092.0	10,444.85	-.	12,847.20

10W-30 Max-Duty Synthetic Diesel Oil

API CK-4/SN, CJ-4, CI-4+, CF • Volvo VDS4.5, VDS4, VDS3 • Mack EOS-4.5, EO-O • Renault RLD-4, RLD-3 • Cummins CES 20086, CES20081 • Caterpillar ECF-2, ECF-3, ECF-1-a • Detroit Diesel DFS 93K222, DDC 93K218, 93K215, 93K214 • ACEA E9, E7 • MB 228.31 • MAN 3575 • MTU Type 2.1, II, I • JASO DH-2 • Deutz DQC III-10LA • Ford WSS-M2C171-F1

DTT1GC	-EA	(1) 3.78-Litre Bottle	8.0	42.35	-.	54.85
DTT1GC	-CA	(4) 3.78-Litre Bottles	32.0	161.20	40.30	217.80
DTT55	-EA	208-Litre Drum*	432.0	1,938.00	-.	2,383.80

0W-40 Max-Duty Synthetic Diesel Oil

API CK-4/SN, CJ-4, CI-4+, CF • Volvo VDS4.5, VDS4, VDS3 • Mack EOS-4.5, EO-O • Renault RLD-4, RLD-3 • Cummins CES20086, CES20081 • Caterpillar ECF-2, ECF-3, ECF-1-a • DDC 93K218, 93K215, 93K214 • DFS 93K222 • ACEAE9, E7 • MB 228.31 • MAN 3575 • MTU Type 2.1, II, I • JASO DH-2 • Deutz DQC III-10LA • Ford WSS-M2C171-F1

DZFQT	-EA	(1) 946-ml. Bottle	2.0	11.20	-.	14.50
DZFQT	-CA	(12) 946-ml. Bottles	24.0	127.80	10.65	172.80
DZF1GC	-EA	(1) 3.78-Litre Bottle	8.0	43.90	-.	56.85
DZF1GC	-CA	(4) 3.78-Litre Bottles	32.0	167.20	41.80	225.80
DZF55	-EA	208-Litre Drum*	427.0	2,020.15	-.	2,484.85

¹than required by the Detroit Diesel DD13 Scuffing Test for specification DFS 93K222 using 5W-30 as worst-case representation.





Stock No.	Units	Pkg/Size	Wt. Lbs., ea.	Wholesale Cost, ea.	Cost Per Unit	Min. Sugg. Retail, ea.
5W-40 Max-Duty Synthetic Diesel Oil						
API CK-4/SN, CJ-4, CI-4+, CF, CF-2 • ACEA E9, E7 • Mack EOS-4.5, EO-O • Detroit Diesel DFS 93K222, DDC 93K218, 93K215, 93K214 • Caterpillar ECF-3, ECF-2, ECF-1-a • Cummins CES20086, CES20081 • Volvo VDS-4.5, VDS-4, VDS-3 • MB 228.31 • MTU Type 2.1, II, I • MAN 3575 • JASO DH-2 • Renault RLD-4, RLD-3 • Deutz DQC III-10 LA • Allison TES-439 • Scania LA-2 • Chrysler MS 10902 • Ford WSS-M2C171-F1						
DEOQTC	-EA	(1) 946-ml. Bottle	2.1	11.15	--	14.45
DEOQTC	-CA	(12) 946-ml. Bottles	25.2	127.20	10.60	172.20
DEO1GC	-EA	(1) 3.78-Litre Bottle	8.0	43.70	--	56.60
DEO1GC	-CA	(4) 3.78-Litre Bottles	32.0	166.40	41.60	224.80
DEOTPC	-EA	(1) 9.45-Litre Bottle	19.5	107.80	--	137.60
DEOTPC	-CA	(2) 9.45-Litre Bottles	39.0	205.30	102.65	273.20
DEO30	-EA	113-Litre Drum*	243.0	1,132.85	--	1,416.10
DEO55	-EA	208-Litre Drum*	437.1	2,009.75	--	2,472.05
DEO27	-EA	1,041-Litre Tote*	2,089.0	10,007.30	--	12,309.00



Stock No.	Units	Pkg/Size	Wt. Lbs., ea.	Wholesale Cost, ea.	Cost Per Unit	Min. Sugg. Retail, ea.
15W-40 Max-Duty Synthetic Diesel Oil						
API CK-4/SN, CJ-4, CI-4+, CF, CF-2 • ACEA E9, E7 • Mack EOS-4.5, EO-O • Detroit Diesel DFS 93K222, DDC 93K218, 93K215, 93K214 • Caterpillar ECF-3, ECF-2, ECF-1-a • Cummins CES20086, CES20081 • Volvo VDS-4.5, VDS-4, VDS-3 • MB 228.31 • MTU Type 2.1, II, I • MAN 3575 • JASO DH-2 • Renault RLD-4, RLD-3 • Deutz DQC III-10 LA • Allison TES-439 • Scania LA-2 • Chrysler MS 10902 • Ford WSS-M2C171-F1						
DMEQTC	-EA	(1) 946-ml. Bottle	2.1	11.00	--	14.25
DMEQTC	-CA	(12) 946-ml. Bottles	25.2	125.40	10.45	169.80
DME1GC	-EA	(1) 3.78-Litre Bottle	8.0	42.95	--	55.65
DME1GC	-CA	(4) 3.78-Litre Bottles	32.0	163.60	40.90	221.00
DMETPC	-EA	(1) 9.45-Litre Bottle	19.5	105.95	--	135.25
DMETPC	-CA	(2) 9.45-Litre Bottles	39.0	201.80	100.90	268.50
DME30	-EA	113-Litre Drum*	242.0	1,110.80	--	1,388.50
DME55	-EA	208-Litre Drum*	437.1	1,969.25	--	2,422.25
DME27	-EA	1,041-Litre Tote*	2,089.0	9,806.90	--	12,062.50

Heavy-Duty Synthetic Diesel Oil

Outstanding protection and performance for customers seeking an upgrade over conventional and other synthetic diesel oils. Provides 4X more engine protection.¹



Stock No.	Units	Pkg/Size	Wt. Lbs., ea.	Wholesale Cost, ea.	Cost Per Unit	Min. Sugg. Retail, ea.
10W-30 Heavy-Duty Synthetic Diesel Oil						
API CK-4, CJ-4, CI-4+, CF • ACEA E9, E7 • Mack EOS-4.5, EO-O • Detroit Diesel DFS 93K222 • DDC 93K218, 93K215, 93K214 • Caterpillar ECF-3, ECF-2, ECF-1-a • Cummins CES20086, CES20081 • Volvo VDS-4.5, VDS-4, VDS-3 • MB 228.31 • MTU Type 2.1, II, I • MAN 3575 • JASO DH-2 • Renault RLD-4, RLD-3 • Deutz DQC III-10 LA • WSS-M2C171-F1						
ADNQTC	-EA	(1) 946-ml. Bottle	2.1	7.35	--	9.60
ADNQTC	-CA	(12) 946-ml. Bottles	25.2	84.00	7.00	114.00
ADN1G	-EA	(1) 3.78-Litre Bottle	8.0	28.60	--	37.15
ADN1G	-CA	(4) 3.78-Litre Bottles	32.0	108.80	27.20	147.00
ADNTPC	-EA	(1) 9.45-Litre Bottle	19.5	69.90	--	89.55
ADNTPC	-CA	(2) 9.45-Litre Bottles	39.0	133.10	66.55	177.10
ADN55	-EA	208-Litre Drum*	434.0	1,361.15	--	1,674.25
ADN27	-EA	1,041-Litre Tote*	2,104.0	6,763.60	--	8,319.25



Stock No.	Units	Pkg/Size	Wt. Lbs., ea.	Wholesale Cost, ea.	Cost Per Unit	Min. Sugg. Retail, ea.
5W-40 Heavy-Duty Synthetic Diesel Oil						
API CK-4, CJ-4, CI-4+, CF-2, CF • ACEA E9, E7 • Mack EOS-4.5, EO-O • Detroit Diesel DFS 93K222, DDC 93K218, 93K215, 93K214 • Caterpillar ECF-3, ECF-2, ECF-1-a • Cummins CES20086, CES20081 • Volvo VDS-4.5, VDS-4, VDS-3 • MB 228.31 • MTU Type 2.1, II, I • MAN 3575 • JASO DH-2 • Renault RLD-4, RLD-3 • Deutz DQC III-10 LA • Allison TES-439 • Chrysler MS 10902 • Ford WSS-M2C171-F1						
ADOQTC	-EA	(1) 946-ml. Bottle	2.1	7.80	--	10.10
ADOQTC	-CA	(12) 946-ml. Bottles	25.2	88.80	7.40	120.00
ADO1GC	-EA	(1) 3.78-Litre Bottle	8.0	30.25	--	39.30
ADO1GC	-CA	(4) 3.78-Litre Bottles	32.0	115.20	28.80	155.60
ADOTPC	-EA	(1) 9.45-Litre Bottle	20.0	74.30	--	95.15
ADOTPC	-CA	(2) 9.45-Litre Bottles	40.0	141.50	70.75	188.30
ADO30	-EA	113-Litre Drum*	241.0	826.10	--	1,032.65
ADO55	-EA	208-Litre Drum*	431.0	1,448.15	--	1,781.30
ADO27	-EA	1,041-Litre Tote*	2,092.0	7,200.45	--	8,856.60



Stock No.	Units	Pkg/Size	Wt. Lbs., ea.	Wholesale Cost, ea.	Cost Per Unit	Min. Sugg. Retail, ea.
15W-40 Heavy-Duty Synthetic Diesel Oil						
API CK-4, CJ-4, CF-2, CI-4+, CF • ACEA E9, E7 • Mack EOS-4.5, EO-O • Detroit Diesel DFS 93K222, DDC 93K218, 93K215, 93K214 • Caterpillar ECF-3, ECF-2, ECF-1-a • Cummins CES20086, CES20081 • Volvo VDS-4.5, VDS-4, VDS-3 • MB 228.31 • MTU Type 2.1, II, I • MAN 3575 • JASO DH-2 • Renault RLD-4, RLD-3 • Deutz DQC III-10 LA • Chrysler MS 10902 • Ford WSS-M2C171 F						
ADPQTC	-EA	(1) 946-ml. Bottle	2.1	7.45	--	9.65
ADPQTC	-CA	(12) 946-ml. Bottles	25.2	84.60	7.05	114.60

¹than required by the Detroit Diesel DD13 Scuffing Test for specification DFS 93K222 using 10W-30 as worst-case representation.

Stock No.	Units	Pkg/Size	Wt. Lbs., ea.	Wholesale Cost, ea.	Cost Per Unit	Min. Sugg. Retail, ea.
ADP1GC	-EA	(1) 3.78-Litre Bottle	8.0	28.90	--	37.55
ADP1GC	-CA	(4) 3.78-Litre Bottles	32.0	110.00	27.50	148.60
ADPTPC	-EA	(1) 9.45-Litre Bottle	20.0	70.75	--	90.65
ADPTPC	-CA	(2) 9.45-Litre Bottles	40.0	134.70	67.35	179.30
ADP30	-EA	113-Litre Drum*	243.0	788.10	--	985.20
ADP55	-EA	208-Litre Drum*	436.0	1,379.15	--	1,696.40
ADP27	-EA	1,041-Litre Tote*	2,117.0	6,854.55	--	8,431.15

AMSOIL CI-4+ Synthetic Diesel Oils

Provides outstanding protection for pre-2007 diesel applications not equipped with diesel particulate filters (DPFs) where the extra protection of a high TBN formula is desired.

Series 3000 5W-30 Synthetic Heavy Duty Diesel Oil

Stock No.	Units	Pkg/Size	Wt. Lbs., ea.	Wholesale Cost, ea.	Cost Per Unit	Min. Sugg. Retail, ea.
<i>API CI-4+/CI-4/CH-4/CF/CF-2/SL/SJ • Global DHD-1 • ACEA A3/B3, E2, E3, E5, E7 • JASO DH-1 • Mack EO-M, EO-N • DDC 93K214 • Caterpillar ECF-1-a, ECF-2 • Cummins CES 20076, 20077, 20078 • Volvo VDS-3, VDS-2 • MB 228.1, 228.3, 229.1 • MAN 271, 3275 • MTU Type II</i>						
HDDQTC	-EA	(1) 946-ml. Bottle	2.1	12.50	--	16.20
HDDQTC	-CA	(12) 946-ml. Bottles	25.2	142.80	11.90	193.20
HDD1GC	-EA	(1) 3.78-Litre Bottle	8.0	48.90	--	63.25
HDD1GC	-CA	(4) 3.78-Litre Bottles	32.0	186.20	46.55	251.40
HDDTP	-EA	(1) 9.45-Litre Bottle	19.6	120.85	--	154.05
HDDTP	-CA	(2) 9.45-Litre Bottles	39.2	230.10	115.05	306.10
HDD30	-EA	113-Litre Drum*	244.6	1,307.90	--	1,634.95
HDD55	-EA	208-Litre Drum*	438.8	2,333.05	--	2,869.70
HDD27	-EA	1,041-Litre Tote*	2,118.9	11,629.15	--	14,303.90

15W-40 Synthetic Heavy Duty Diesel and Marine Oil

Stock No.	Units	Pkg/Size	Wt. Lbs., ea.	Wholesale Cost, ea.	Cost Per Unit	Min. Sugg. Retail, ea.
<i>API CI-4+/CI-4/CH-4/CF/CF-2/SL/SJ • Global DHD-1 • ACEA A3/B3, E2, E3, E5, E7 • JASO DH-1 • Mack EO-M, EO-N • DDC 93K214 • Caterpillar ECF-1-a, ECF-2 • Cummins CES 20076, 20077, 20078 • Volvo VDS-3, VDS-2 • MB 228.1, 228.3, 229.1 • MAN 271, 3275 • MTU Type II</i>						
AMEQTC	-EA	(1) 946-ml. Bottle	2.1	10.65	--	13.75
AMEQTC	-CA	(12) 946-ml. Bottles	25.2	121.20	10.10	163.80
AME1GC	-EA	(1) 3.78-Litre Bottle	8.0	41.45	--	53.70
AME1GC	-CA	(4) 3.78-Litre Bottles	32.0	157.80	39.45	213.20
AMETPC	-EA	(1) 9.45-Litre Bottle	19.6	102.20	--	130.45
AMETPC	-CA	(2) 9.45-Litre Bottles	39.2	194.60	97.30	258.90
AME30	-EA	113-Litre Drum*	242.8	1,094.20	--	1,367.75
AME55	-EA	208-Litre Drum*	436.0	1,941.25	--	2,387.75
AME27	-EA	1,041-Litre Tote*	2,102.2	9,670.00	--	11,894.15

SEVERE GEAR® Synthetic EP Lubricant

Specifically engineered for high-demand applications, including trailer towing, heavy hauling, 4x4 off-road driving, commercial use and racing.

Stock No.	Units	Pkg/Size	Wt. Lbs., ea.	Wholesale Cost, ea.	Cost Per Unit	Min. Sugg. Retail, ea.
SEVERE GEAR SAE 75W-90 Synthetic Gear Lube						
<i>API GL-5/MT-1 • MIL-PRF-2105E • MACK GO-J • Dana SHAES 234 (Eaton PS-037)</i>						
SVGQTC	-EA	(1) 946-ml. Bottle	2.0	16.70	--	21.60
SVGQTC	-CA	(12) 946-ml. Bottles	24.0	190.80	15.90	258.00
SVGPK	-EA	(1) 946-ml. Easy-Pack	2.0	16.70	--	21.60
SVGPK	-CA	(12) 946-ml. Easy-Packs	24.0	190.80	15.90	258.00
SVG05	-EA	18.9-Litre Pail	38.8	311.15	--	413.85
SVG16	-EA	61-Litre Keg*	131.0	985.10	--	1,261.00
SVG30	-EA	113-Litre Drum*	241.0	1,794.15	--	2,242.75
SVG55	-EA	208-Litre Drum*	432.0	3,217.35	--	3,957.40





Stock No.	Units	Pkg/Size	Wt. Lbs., ea.	Wholesale Cost, ea.	Cost Per Unit	Min. Sugg. Retail, ea.
SEVERE GEAR SAE 80W-90 Synthetic Gear Lube						
<i>API GL-5/MT-1 • MIL-PRF-2105E • MACK GO-J • Dana SHAES 234 (Eaton PS-037)</i>						
AGLQT	-EA	(1) 946-ml. Bottle	2.1	12.05	--	15.60
AGLQT	-CA	(12) 946-ml. Bottles	25.2	137.40	11.45	186.00
AGLPK	-EA	(1) 946-ml. Easy-Pack	2.1	16.30	--	21.05
AGLPK	-CA	(12) 946-ml. Easy-Packs	25.2	186.00	15.50	251.40
AGL05	-EA	18.9-Litre Pail	39.8	219.35	--	291.80
AGL16	-EA	61-Litre Keg*	133.9	691.30	--	884.95
AGL30	-EA	113-Litre Drum*	247.0	1,243.15	--	1,553.95
AGL55	-EA	208-Litre Drum*	443.2	2,207.25	--	2,715.00
AGL27	-EA	1,041-Litre Tote*	2,141.2	11,000.05	--	13,530.10



SEVERE GEAR SAE 75W-110 Synthetic Gear Lube						
<i>API GL-5/MT-1 • MIL-PRF-2105E • Mack GO-J • Dana SHAES 234 (Eaton PS-037)</i>						
SVTQT	-EA	(1) 946-ml. Bottle	2.1	17.35	--	22.40
SVTQT	-CA	(12) 946-ml. Bottles	25.2	198.00	16.50	267.60
SVTPK	-EA	(1) 946-ml. Easy-Pack	2.1	21.75	--	28.05
SVTPK	-CA	(12) 946-ml. Easy-Packs	25.2	248.40	20.70	335.40
SVT05	-EA	18.9-Litre Pail	40.0	321.90	--	428.20
SVT16	-EA	61-Litre Keg*	132.0	1,019.65	--	1,305.20
SVT30	-EA	113-Litre Drum*	244.0	1,858.85	--	2,323.60
SVT55	-EA	208-Litre Drum*	437.0	3,335.95	--	4,103.30



SEVERE GEAR SAE 75W-140 Synthetic Gear Lube						
<i>API GL-5/MT-1 • MIL-PRF-2105E • MACK GO-J • Dana SHAES 234 (Eaton PS-037)</i>						
SVOQTC	-EA	(1) 946-ml. Bottle	2.1	19.20	--	24.75
SVOQTC	-CA	(12) 946-ml. Bottles	25.2	219.00	18.25	295.80
SVOPK	-EA	(1) 946-ml. Easy-Pack	2.0	19.20	--	24.75
SVOPK	-CA	(12) 946-ml. Easy-Packs	24.0	219.00	18.25	295.80
SVO05	-EA	18.9-Litre Pail	39.2	350.70	--	466.50
SVO16	-EA	61-Litre Keg*	132.0	1,111.70	--	1,423.05
SVO30	-EA	113-Litre Drum*	244.0	2,031.45	--	2,539.35
SVO55	-EA	208-Litre Drum*	437.0	3,652.35	--	4,492.45
SVO27	-EA	1,041-Litre Tote*	2,131.0	18,225.55	--	22,417.50

SEVERE GEAR® Heavy Viscosity Synthetic Gear Lube

Engineered specifically for the demands of off-road truck racing, rock racing, rock crawling, tractor pulling, funny car racing and dragster racing applications.



Stock No.	Units	Pkg/Size	Wt. Lbs., ea.	Wholesale Cost, ea.	Cost Per Unit	Min. Sugg. Retail, ea.
SEVERE GEAR SAE 190 Synthetic Gear Lube						
<i>API GL-5/MT-1</i>						
SRNQT	-EA	(1) 946-ml. Bottle	2.1	17.80	--	23.00
SRNQT	-CA	(12) 946-ml. Bottles	25.2	203.40	16.95	274.80
SRN05	-EA	18.9-Litre Pail	40.0	331.60	--	441.10
SRN16	-EA	61-Litre Keg*	134.1	1,050.90	--	1,345.20
SRN30	-EA	113-Litre Drum*	247.4	1,916.95	--	2,396.20
SRN55	-EA	208-Litre Drum*	443.9	3,439.35	--	4,230.45
SRN27	-EA	1,041-Litre Tote*	2,144.5	17,157.25	--	21,103.45



SEVERE GEAR SAE 250 Synthetic Gear Lube						
<i>API GL-5/MT-1</i>						
SRTQT	-EA	(1) 946-ml. Bottle	2.1	17.80	--	23.00
SRTQT	-CA	(12) 946-ml. Bottles	25.2	203.40	16.95	274.80
SRT05	-EA	18.9-Litre Pail	40.0	331.60	--	441.10
SRT16	-EA	61-Litre Keg*	134.5	1,050.90	--	1,345.20
SRT30	-EA	113-Litre Drum*	248.2	1,916.95	--	2,396.20
SRT55	-EA	208-Litre Drum*	445.4	3,439.35	--	4,230.45
SRT27	-EA	1,041-Litre Tote*	2,151.9	17,157.25	--	21,103.45

Long Life Synthetic Gear Lube

Specifically engineered for extended drain intervals up to 805,000 kilometers as set by equipment manufacturers for over-the-road trucks and heavy equipment.



Stock No.	Units	Pkg/Size	Wt. Lbs., ea.	Wholesale Cost, ea.	Cost Per Unit	Min. Sugg. Retail, ea.
SAE 75W-90 Long Life Synthetic Gear Lube						
<i>API GL-5/MT-1 • MIL-PRF-2105E • MACK GO-J+ • Dana SHAES 256 (Eaton PS-163)</i>						
FGRQTC	-EA	(1) 946-ml. Bottle	2.1	14.05	-	18.15
FGRQTC	-CA	(12) 946-ml. Bottles	25.2	160.20	13.35	216.60
FGR1G	-EA	(1) 3.78-Litre Bottle	8.1	55.05	-	71.15
FGR1G	-CA	(4) 3.78-Litre Bottles	32.4	209.60	52.40	283.00
FGR05	-EA	18.9-Litre Pail	39.7	258.70	-	344.10
FGR16	-EA	61-Litre Keg*	133.4	818.30	-	1,047.45
FGR30	-EA	113-Litre Drum*	246.0	1,478.20	-	1,847.75
FGR55	-EA	208-Litre Drum*	442.0	2,636.40	-	3,242.80
FGR27	-EA	1,041-Litre Tote*	2,133.0	13,139.70	-	16,161.85

SAE 80W-140 Long Life Synthetic Gear Lube

API GL-5/MT-1 • MIL-PRF-2105E • MACK GO-J+ • Dana SHAES 256 (Eaton PS-163)

FGO05	-EA	18.9-Litre Pail	40.0	258.75	-	344.20
FGO16	-EA	61-Litre Keg*	135.0	818.40	-	1,047.60
FGO30	-EA	113-Litre Drum*	249.0	1,478.45	-	1,848.10
FGO55	-EA	208-Litre Drum*	446.0	2,637.90	-	3,244.70
FGO27	-EA	1,041-Litre Tote*	2,154.0	13,146.20	-	16,169.90

75W-90 Synthetic Marine Gear Lube

Delivers advanced outboard protection against power loss and gear wear, even with up to 15 percent water contamination¹, in outboard lower units, stern drives, V-drives, bow and tunnel thrusters and marine transmissions.



Stock No.	Units	Pkg/Size	Wt. Lbs., ea.	Wholesale Cost, ea.	Cost Per Unit	Min. Sugg. Retail, ea.
<i>GL-5, GL-4</i>						
AGMTB	-EA	(1) 295-ml. Tube	0.7	7.70	-	10.20
AGMTB	-CA	(6) 295-ml. Tubes	4.2	43.80	7.30	60.60
AGMQTC	-EA	(1) 946-ml. Bottle	2.1	12.55	-	16.25
AGMQTC	-CA	(12) 946-ml. Bottles	25.2	143.40	11.95	193.80
AGMPK	-EA	(1) 946-ml. Easy-Pack	2.1	14.65	-	18.95
AGMPK	-CA	(12) 946-ml. Easy-Packs	25.2	167.40	13.95	226.20
AGM05	-EA	18.9-Litre Pail	39.4	232.45	-	309.25
AGM16	-EA	61-Litre Keg*	132.5	733.10	-	938.45
AGM30	-EA	113-Litre Drum*	245.0	1,321.65	-	1,652.10

Slip Lock® Differential Additive

Designed to eliminate gear-housing chatter in cars, trucks and SUVs equipped with limited-slip, positraction and locking differentials.



Stock No.	Units	Pkg/Size	Wt. Lbs., ea.	Wholesale Cost, ea.	Cost Per Unit	Min. Sugg. Retail, ea.
ADATBC	-EA	(1) 118-ml. Tube	0.3	9.15	-	12.15
ADATBC	-CA	(12) 118-ml. Tubes	3.6	104.40	8.70	144.60

Signature Series Multi-Vehicle Synthetic Automatic Transmission Fluid

Provides reserve heat protection in fleet vehicles, heavy-duty pickups, work trucks and other severe-service applications that quickly break down other lubricants.



Stock No.	Units	Pkg/Size	Wt. Lbs., ea.	Wholesale Cost, ea.	Cost Per Unit	Min. Sugg. Retail, ea.
<i>Allison C-4, TES-389 • BMW 7045E, 8072B, LA 2634, LT 71141 • Chrysler ATF+4*, Mopar* ASRC, 68089195AA, 68049954AA • Ford MERCON*, MERCON* V, ESP-M2C166-H, FNR5, M2C924-A, XL-12 • GM DEXRON* II, DEXRON* III, AutoTrak II • Honda/Acura ATF-Z1 • Hyundai/Kia SP-II, SP-III, Red-1 • Idemitsu K17 • JASO 1A • JWS 3309, 3314, 3317 • MAN 339 Type V-1, 339 Type V-2, 339 Type Z-1, 339 Type Z-2, 339 Type Z-3, 339F • Mazda ATF-M III, ATF-MV, F-1 • Mercedes-Benz 236.1, 236.2, 236.3, 236.5, 236.6, 236.7, 236.9, 236.10, 236.11, 236.81, 236.91 • Mitsubishi SP-II, SP-III, ATF-J2 • Nissan Matic-D, Matic-J, Matic-K, 402 • SAAB 3309 • Shell 3403, LA 2634 • Subaru ATF, ATF-HP • Suzuki 3314, 3317 • Texaco ETL-7045E, ETL-8072B, N402 • Toyota Type T, T-II, T-III, T-IV • Voith 55.6335, 55.6336 • Volvo 97340, 97341 • VW/Audi G 052 162, G 052 990, G 055 025 • ZF TE-ML 03D, 04D, 05L, 09, 11A, 11B, 14A, 14B, 14C, 16L, 16M, 17C, 20B, 20C, 21L</i>						
ATFQTC	-EA	(1) 946-ml. Bottle	2.0	13.80	-	17.80
ATFQTC	-CA	(12) 946-ml. Bottles	24.0	157.20	13.10	212.40
ATFPK	-EA	(1) 946-ml. Easy-Pack	2.0	17.80	-	23.00
ATFPK	-CA	(12) 946-ml. Easy-Packs	24.0	203.40	16.95	274.80
ATF1G	-EA	(1) 3.78-Litre Bottle	7.9	53.90	-	69.70
ATF1G	-CA	(4) 3.78-Litre Bottles	31.6	205.20	51.30	277.20
ATFTPC	-EA	(1) 9.45-Litre Bottle	19.3	133.15	-	169.70
ATFTPC	-CA	(2) 9.45-Litre Bottles	38.6	253.60	126.80	337.40
ATF16	-EA	61-Litre Keg*	129.5	806.50	-	1,032.35
ATF30	-EA	113-Litre Drum*	238.9	1,447.65	-	1,809.60
ATF55	-EA	208-Litre Drum*	428.3	2,586.55	-	3,181.50
ATF27	-EA	1,041-Litre Tote*	2,066.4	12,889.65	-	15,854.30

¹Based upon AMSOIL testing of AMSOIL Synthetic Marine Gear Lube 75W-90 in ASTM 3233 and ASTM D892.

Signature Series Fuel-Efficient Synthetic Automatic Transmission Fluid

Provides the same benefits as AMSOIL Multi-Vehicle Synthetic Automatic Transmission Fluid in a fuel-efficient formulation engineered to exceed the requirements of GM, Ford, Toyota and other original equipment manufacturers (OEMs) where low-viscosity oil is required.



Stock No.	Units	Pkg/Size	Wt. Lbs., ea.	Wholesale Cost, ea.	Cost Per Unit	Min. Sugg. Retail, ea.
<i>Aisin-Warner AW-1 • BMW 83 22 0 142 516, 83 22 2 152 426 • Chrysler Mopar* 68157995A, SP-IV, 68218925AB • DSIH 6p805 • Ford MERCON* LV, SP • GM DEXRON* HP, DEXRON* VI • Honda/Acura DW-1*, Type 3.0 • Hyundai/Kia SP-IV, SPH-IV, SP-IV-RR, NWS-9638, SP4-M • JASO 1A-LV • JWS 3324 • Mercedes-Benz 236.12, 236.14, 236.15, 236.41 • Mitsubishi SP-IV, ATF J3, ATF-PA • Nissan Matic-S, Matic-W • Saab 93 165 147 • Shell M-1375.4, M-1375.5, M-1375.6, M-L 12108 • Toyota WS • Volvo 31256774 • VW/Audi G 055 005, G 055 162, G 060 162 • ZF S671 090 255.</i>						
ATLQTC	-EA	(1) 946-ml. Bottle	2.0	14.70	.-	19.05
ATLQTC	-CA	(12) 946-ml. Bottles	24.0	168.00	14.00	227.40
ATLPK	-EA	(1) 946-ml. Easy-Pack	2.0	19.20	.-	24.75
ATLPK	-CA	(12) 946-ml. Easy-Packs	24.0	219.00	18.25	295.80
ATL1G	-EA	(1) 3.78-Litre Bottle	7.9	57.50	.-	74.35
ATL1G	-CA	(4) 3.78-Litre Bottles	31.6	219.00	54.75	295.80
ATLTPC	-EA	(1) 9.45-Litre Bottle	19.5	142.20	.-	181.15
ATLTPC	-CA	(2) 9.45-Litre Bottles	39.0	270.80	135.40	360.30
ATL30	-EA	113-Litre Drum*	237.0	1,551.30	.-	1,939.15
ATL55	-EA	208-Litre Drum*	424.0	2,777.05	.-	3,415.85

OE Multi-Vehicle Synthetic Automatic Transmission Fluid

Resists wear and guards against sludge and varnish formation in passenger car/light truck automatic transmissions throughout original equipment manufacturer (OEM)-recommended drain intervals.



Stock No.	Units	Pkg/Size	Wt. Lbs., ea.	Wholesale Cost, ea.	Cost Per Unit	Min. Sugg. Retail, ea.
<i>Allison C-4, TES-389 • BMW 7045E, 8072B, LA 2634, LT 71141 • Chrysler Mopar AS68RC, ATF+4 • Ford Mercon, Mercon V, ESP-M2C166-H, FNR5, M2C924-A • GM DEXRON II, DEXRON III, AutoTrack II • Honda ATF-Z1 • Hyundai/Kia SP-II, SP-III, Red-1 • Idemitsu K17 • JASO 1A • JWS 3309, 3314, 3317 • MAN 339 Type V-1, 339 Type V-2, 339 Type Z-1, 339 Type Z-2, 339F • Mazda ATF-M III, ATF-MV, F-1 • Mercedes-Benz 236.1, 236.2, 236.3, 236.5, 236.6, 236.7, 236.9, 236.10, 236.11, 236.81, 236.91 • Mitsubishi SP-II, SP-III, ATF-J2 • Nissan Matic-D, Matic-J, Matic-K, 402 • Saab 3309 • Shell 3403, LA 2634 • Subaru ATF, ATF-HP • Suzuki 3314, 3317 • Texaco ETL-7045E, ETL-8072B, N402 • Toyota Type T, T-II, T-III, T-IV • Voith 55.6335, 55.6336 • Volvo 97340, 97341 • VW/Audi G 052 162, G 052 990, G 055 025 • ZF TE-ML 03D, 04D, 05L, 09, 11A, 11B, 14A, 14B, 16L, 17C, 20B, 21L • AMSOIL warrants the use of this product for Chrysler ATF+4 applications above -38°F. Product does not meet the cold temperature requirement of ATF+4 at -40°F. For warranty information, visit www.amsoil.com/warranty.</i>						
OTFQTC	-EA	(1) 946-ml. Bottle	2.0	9.30	.-	12.05
OTFQTC	-CA	(12) 946-ml. Bottles	24.0	106.20	8.85	143.40
OTF1G	-EA	(1) 3.78-Litre Bottle	7.9	36.45	.-	47.25
OTF1G	-CA	(4) 3.78-Litre Bottles	31.6	138.80	34.70	187.40
OTFTP	-EA	(1) 9.45-Litre Bottle	19.3	89.70	.-	114.60
OTFTP	-CA	(2) 9.45-Litre Bottles	38.6	170.80	85.40	227.20
OTF30	-EA	113-Litre Drum*	238.9	1,005.15	.-	1,256.45
OTF55	-EA	208-Litre Drum*	428.3	1,774.60	.-	2,182.80
OTF27	-EA	1,041-Litre Tote*	2,066.4	8,831.60	.-	10,862.95

OE Fuel-Efficient Synthetic Automatic Transmission Fluid

Provides the same benefits as AMSOIL OE Multi-Vehicle Synthetic Automatic Transmission Fluid in a fuel-efficient formulation engineered to exceed the requirements of GM, Ford, Toyota and other original equipment manufacturers (OEMs) where low-viscosity oil is required.



Stock No.	Units	Pkg/Size	Wt. Lbs., ea.	Wholesale Cost, ea.	Cost Per Unit	Min. Sugg. Retail, ea.
<i>Aisin-Warner AW-1 • BMW 83 22 0 142 516, 83 22 2 152 426 • Chrysler Mopar* 68157995A, SP-IV, 68218925AB • DSIH 6p805 • Ford MERCON* LV • GM DEXRON* VI • Honda/Acura DW-1*, Type 3.0 • Hyundai/KIA SP-IV, SPH-IV, SP-IV-RR, NWS-9638, SP4-M; JASO 1A-LV • JWS 3324 • Mercedes-Benz 236.12, 236.14, 236.15, 236.41 • Mitsubishi SP-IV, ATF J3, ATF-PA • Nissan Matic-S, Matic-W • SAAB 93 165 147 • Shell M-1375.4, M-1375.5, M-1375.6, M-L12108 • Toyota WS • Volvo 31256774 • VW/Audi G 055 005, G 055 162, G 060 162; ZF S671 090 255.</i>						
OTLQTC	-EA	(1) 946-ml. Bottle	2.0	9.10	.-	11.80
OTLQTC	-CA	(12) 946-ml. Bottles	24.0	103.80	8.65	140.40
OTL1G	-EA	(1) 3.78-Litre Bottle	7.9	35.70	.-	46.35
OTL1G	-CA	(4) 3.78-Litre Bottles	31.6	136.00	34.00	183.80
OTLTP	-EA	(1) 9.45-Litre Bottle	19.5	87.80	.-	112.20
OTLTP	-CA	(2) 9.45-Litre Bottles	39.0	167.20	83.60	222.40
OTL30	-EA	113-Litre Drum*	237.0	983.20	.-	1,229.05
OTL55	-EA	208-Litre Drum*	424.0	1,735.70	.-	2,134.95



Synthetic CVT Fluid

Provides outstanding protection and performance for continuously variable transmissions (CVT) throughout original equipment manufacturer (OEM)-recommended drain intervals.

Stock No.	Units	Pkg/Size	Wt. Lbs., ea.	Wholesale Cost, ea.	Cost Per Unit	Min. Sugg. Retail, ea.
BMW EZL 799A (8322 0 136 376/8322 0 429 154) • Daihatsu Amix CVTF-DC, CVTF-DFE • FCA Mopar* CVTF +4 (Mopar* CVT 4) • Ford M2C928-A (CFT 23), WSS-M2C933-A (CFT 30, Motorcraft* XT-7-QCFT), MERCON* C • GM DEX-CVT, GM CVT (CVTF I-Green2) • Honda HMMF (08200-9006), HCF-2 • Hyundai/Kia SP-CVT 1 • Mazda CVTF 3320 • Mercedes-Benz 236.20 (001 989 46 03) • Mitsubishi CVTF-J1, CVTF-J4 • Nissan NS-1, NS-2, NS-3 • Subaru e-CVT, i-CVT F, Lineartronic* CV-30, Lineartronic* CVTF/CVT-II (K0425Y0710), High Torque CVTF • Suzuki CVT Fluid Green 1, CVT Fluid Green 2 (NS-2), CVTF 3320 (TC) • Toyota/Lexus TC, FE • VW/Audi TL 52180 (G 052 180), TL 52516 (G 052 516)						
CVTQTC	-EA	(1) 946-ml. Bottle	2.0	13.50	.-	18.10
CVTQTC	-CA	(12) 946-ml. Bottles	24.0	154.20	12.85	216.00
CVT1G	-EA	(1) 3.78-Litre Bottle	8.0	53.15	.-	71.25
CVT1G	-CA	(4) 3.78-Litre Bottles	32.0	202.40	50.60	283.40
CVT55	-EA	208-Litre Drum*	430.0	2,555.90	.-	3,246.05

100% Synthetic DCT Fluid

Designed to protect high-tech dual-clutch transmissions during the most intense, high-heat operating conditions.



Stock No.	Units	Pkg/Size	Wt. Lbs., ea.	Wholesale Cost, ea.	Cost Per Unit	Min. Sugg. Retail, ea.
BMW 83 22 2 148 578, 83 22 2 148 579, 83 22 0 440 214, 83 22 2 147 477, DCTF-1, MTF-LT-5 • Chrysler 68044345 • Citroen/Peugeot 9734, S2 • Ferrari/Shell TF DCTF-3 • Fiat BOT 341 • Ford WSS-M2C-936-A • Mercedes-Benz 236.21, 236.25 • Mitsubishi Dia-Queen SSTF-I • Nissan GT-R Transmission Oil R35 Special • Pentosin FFL-2, FFL-3, FFL-4 • Porsche 999.917.080.00, 043 207 29, 043 207 30, 000 430 20 • Renault BOT 450 • Volvo 1161838, 1161839 • VW/Audi G 052 182, G 052 529, TL 521 82						
DCTQT	-EA	(1) 946-ml. Bottle	2.0	21.60	.-	29.90
DCTQT	-CA	(12) 946-ml. Bottles	24.0	246.60	20.55	357.60

Synthetic Manual Synchronesh Transmission Fluid

Specifically designed to deliver smooth shifts and superior wear protection in manual transmissions and transaxles with synchronizers.



Stock No.	Units	Pkg/Size	Wt. Lbs., ea.	Wholesale Cost, ea.	Cost Per Unit	Min. Sugg. Retail, ea.
New Venture NV T350, NV1500, NV2500, NV3500, NV3550 & NV5600 • Tremec T4, T5, T18, T56, T176, TK0500, TK0600, TR3550 (GM Vehicles) & TR3450 • Honda Genuine MTF • GM Part #12345349, #12345577, #12377916 & #1052931 • Chrysler Part #4874464 & #4874465 • GM specs #9985648, #9986105 & #9985535 • Chrysler specs MS-9224 & MS-9417 • MTF-94 & Texaco MTX Fluids						
MTFQTC	-EA	(1) 946-ml. Bottle	2.1	15.00	.-	19.35
MTFQTC	-CA	(12) 946-ml. Bottles	25.2	171.00	14.25	231.00
MTF05	-EA	18.9-Litre Pail	39.2	276.50	.-	367.80
MTF55	-EA	208-Litre Drum*	436.0	2,786.75	.-	3,427.80

Synthetic Manual Transmission and Transaxle Gear Lube

Formulated to provide smooth shifts while protecting bearings, gears and seals in manual transmissions and transaxles.



Stock No.	Units	Pkg/Size	Wt. Lbs., ea.	Wholesale Cost, ea.	Cost Per Unit	Min. Sugg. Retail, ea.
API GL-4, ZF TE-ML 02B, 17A, MB 235.5 & MAN 341-Z2 (formerly MAN 341 ML) • Synchronized manual transmissions and transaxles that require 75W-85, 75W-90 or 80W-90 API GL-4 Gear Lube • NV 4500 Transmissions • GM Part #12346190 • Chrysler Part #4874459 • Chrysler spec MS-9070 • Certain Hyundai, Hino, Infiniti, Kia, Lexus, Mazda, Mitsubishi, Nissan, Suzuki, Toyota & Volkswagen models requiring GL-4						
MTGQTC	-EA	(1) 946-ml. Bottle	2.0	17.40	.-	22.45
MTGQTC	-CA	(12) 946-ml. Bottles	24.0	198.60	16.55	268.20
MTGPK	-EA	(1) 946-ml. Easy-Pack	2.0	17.75	.-	22.95
MTGPK	-CA	(12) 946-ml. Easy-Packs	24.0	202.80	16.90	274.20
MTG05	-EA	18.9-Litre Pail	38.9	323.45	.-	430.25
MTG55	-EA	208-Litre Drum*	434.0	3,354.95	.-	4,126.60

Super Shift® Synthetic Racing Transmission Fluid

Formulated to prevent slippage and reduce heat in high-performance, high-horsepower vehicles.



Stock No.	Units	Pkg/Size	Wt. Lbs., ea.	Wholesale Cost, ea.	Cost Per Unit	Min. Sugg. Retail, ea.
Allison C-4 • Ford Type F						
ARTQT	-EA	(1) 946-ml. Bottle	2.0	13.40	.-	17.35
ARTQT	-CA	(12) 946-ml. Bottles	24.0	153.00	12.75	207.00
ART55	-EA	208-Litre Drum*	429.4	2,512.30	.-	3,090.20

Torque-Drive® Synthetic Heavy-Duty Automatic Transmission Fluid

Premium fluid designed for use in both on- and off-highway heavy-duty equipment, including Allison, MAN, Voith, ZF and other heavy-duty automatic transmissions.



Stock No.	Units	Pkg/Size	Wt. Lbs., ea.	Wholesale Cost, ea.	Cost Per Unit	Min. Sugg. Retail, ea.
<i>AMSOIL recommends Torque-Drive for use in all automatic transmissions requiring any of the following specifications: Allison C-4, TES-295, TES-389 • Ford MERCON V • GM DEXRON III • MAN 339 Type V-1, 339 Type V-2, 339 Type Z-1, 339 Type Z-2, 339 Type Z-3, 339F • MB 236.91, 236.10 • Voith 55.6335, 55.6336 • Volvo 97340, 97341 • ZF TE-ML 03D, TE-ML 04D, TE-ML 14A, TE-ML 14B, TE-ML 14C, TE-ML 17C, TE-ML 20B, TE-ML 20C</i>						
ATD1GC	-EA	(1) 3.78-Litre Bottle	7.8	56.60	-.-	73.20
ATD1GC	-CA	(4) 3.78-Litre Bottles	31.2	215.60	53.90	291.20
ATDTP	-EA	(1) 9.45-Litre Bottle	19.1	140.05	-.-	178.40
ATDTP	-CA	(2) 9.45-Litre Bottles	38.2	266.70	133.35	354.80
ATD16	-EA	61-Litre Keg*	129.0	847.10	-.-	1,084.35
ATD30	-EA	113-Litre Drum*	238.0	1,527.50	-.-	1,909.45
ATD55	-EA	208-Litre Drum*	426.0	2,735.65	-.-	3,364.90
ATD27	-EA	1,041-Litre Tote*	2,054.0	13,642.20	-.-	16,779.95

SAE 50 Long-Life Synthetic Transmission Oil

Specially formulated for manual transmissions found in high-torque, heavy-duty line haul trucks and other commercial applications.



Stock No.	Units	Pkg/Size	Wt. Lbs., ea.	Wholesale Cost, ea.	Cost Per Unit	Min. Sugg. Retail, ea.
<i>Eaton PS-164 Rev. 7 • API GL-1 and MT-1 • Navistar/International TMS 6816 • Mack TO-A Plus • ZF Freedomline • Meritor O-81 • Rockwell/Eaton/Fuller CD-50 (PS-081)</i>						
FTF1G	-EA	(1) 3.78-Litre Bottle	8.0	55.35	-.-	71.60
FTF1G	-CA	(4) 3.78-Litre Bottles	32.0	210.80	52.70	284.80
FTF05	-EA	18.9-Litre Pail	39.0	260.80	-.-	346.90
FTF16	-EA	61-Litre Keg*	132.0	828.25	-.-	1,060.25
FTF55	-EA	208-Litre Drum*	430.0	2,670.95	-.-	3,285.30
FTF27	-EA	1,041-Litre Tote*	2,073.0	13,318.65	-.-	16,382.00

Synthetic Powershift Transmission Fluid

Provides outstanding friction performance for enhanced clutch engagement and superior wear protection in heavy-duty powershift transmissions.

Stock No.	Units	Pkg/Size	Wt. Lbs., ea.	Wholesale Cost, ea.	Cost Per Unit	Min. Sugg. Retail, ea.
Synthetic Powershift Transmission Fluid SAE 10W						
<i>CAT TO-4 • Allison C-4 • Komatsu 07.868.1</i>						
CTG05	-EA	18.9-Litre Pail	38.6	215.05	-.-	286.05
CTG55	-EA	208-Litre Drum*	429.4	2,167.65	-.-	2,666.25
CTG27	-EA	1,041-Litre Tote*	2,071.9	10,802.30	-.-	13,286.90
Synthetic Powershift Transmission Fluid SAE 30						
<i>CAT TO-4 • Allison C-4 • Komatsu 07.868.1</i>						
CTJ05	-EA	18.9-Litre Pail	39.2	213.40	-.-	283.90
CTJ55	-EA	208-Litre Drum*	436.0	2,149.70	-.-	2,644.20
Synthetic Powershift Transmission Fluid SAE 50						
<i>CAT TO-4 • Rockwell/Eaton/Fuller CD-50 • Komatsu 07.868.1</i>						
CTL05	-EA	18.9-Litre Pail	39.8	229.45	-.-	305.25
CTL55	-EA	208-Litre Drum*	442.7	2,325.85	-.-	2,860.85
CTL27	-EA	1,041-Litre Tote*	2,138.7	11,593.15	-.-	14,259.65

HP Marine™ Synthetic 2-Stroke Oil

Prevents piston skirt scuffing, cylinder bore scuffing and ring sticking in all two-stroke outboard motors, personal watercraft and anywhere NMMA TC-W3 and API-TC oils are specified.



Stock No.	Units	Pkg/Size	Wt. Lbs., ea.	Wholesale Cost, ea.	Cost Per Unit	Min. Sugg. Retail, ea.
<i>TC-W3 / API TC</i>						
HPMQTC	-EA	(1) 946-ml. Bottle	2.0	10.25	-.-	13.30
HPMQTC	-CA	(12) 946-ml. Bottles	24.0	117.00	9.75	158.40
HPM1GC	-EA	(1) 3.78-Litre Bottle	7.9	39.70	-.-	51.45
HPM1GC	-CA	(4) 3.78-Litre Bottles	31.6	151.20	37.80	204.20
HPM16	-EA	61-Litre Keg*	131.0	590.10	-.-	755.40
HPM30	-EA	113-Litre Drum*	241.0	1,043.05	-.-	1,303.85
HPM55	-EA	208-Litre Drum*	432.0	1,844.60	-.-	2,268.95
HPM27	-EA	1,041-Litre Tote*	2,087.0	9,182.25	-.-	11,294.20



DOMINATOR® Synthetic 2-Stroke Racing Oil

Delivers outstanding wear protection in high-horsepower and modified racing or trail motors, including snowmobiles, motorcycles, ATVs, personal watercraft, go-carts and outboard racing motors.

Stock No.	Units	Pkg/Size	Wt. Lbs., ea.	Wholesale Cost, ea.	Cost Per Unit	Min. Sugg. Retail, ea.
<i>API TC</i>						
TDRQTC	-EA	(1) 946-ml. Bottle	2.1	12.05	-.-	15.60
TDRQTC	-CA	(12) 946-ml. Bottles	25.2	137.40	11.45	186.00
TDR1GC	-EA	(1) 3.78-Litre Bottle	8.2	46.85	-.-	60.65
TDR1GC	-CA	(4) 3.78-Litre Bottles	32.8	178.40	44.60	241.00
TDR16	-EA	61-Litre Keg*	135.0	699.35	-.-	895.20
TDR30	-EA	113-Litre Drum*	249.0	1,243.60	-.-	1,554.50
TDR55	-EA	208-Litre Drum*	447.0	2,208.85	-.-	2,716.95

INTERCEPTOR® Synthetic 2-Stroke Injector Oil

Prevents piston skirt scuffing, ring sticking and exhaust power valve sticking in two-stroke snowmobiles.



Stock No.	Units	Pkg/Size	Wt. Lbs., ea.	Wholesale Cost, ea.	Cost Per Unit	Min. Sugg. Retail, ea.
<i>API TC</i>						
AITQTC	-EA	(1) 946-ml. Bottle	2.1	11.50	-.-	14.90
AITQTC	-CA	(12) 946-ml. Bottles	25.2	131.40	10.95	177.60
AIT1GC	-EA	(1) 3.78-Litre Bottle	8.2	44.70	-.-	57.85
AIT1GC	-CA	(4) 3.78-Litre Bottles	32.8	170.20	42.55	229.80
AIT16	-EA	61-Litre Keg*	136.0	666.45	-.-	853.15
AIT30	-EA	113-Litre Drum*	251.0	1,186.10	-.-	1,482.70
AIT55	-EA	208-Litre Drum*	451.0	2,108.45	-.-	2,593.50
AIT27	-EA	1,041-Litre Tote*	2,176.0	10,500.30	-.-	12,915.40

Synthetic 2-Stroke Injector Oil

High-quality, cost-effective oil for the severe operating conditions of two-stroke snowmobiles and outboard motors.



Stock No.	Units	Pkg/Size	Wt. Lbs., ea.	Wholesale Cost, ea.	Cost Per Unit	Min. Sugg. Retail, ea.
<i>TC-W3 / API TC</i>						
AIOQTC	-EA	(1) 946-ml. Bottle	2.1	8.85	-.-	11.75
AIOQTC	-CA	(12) 946-ml. Bottles	25.2	100.80	8.40	139.80
AIO1GC	-EA	(1) 3.78-Litre Bottle	8.0	34.15	-.-	45.40
AIO1GC	-CA	(4) 3.78-Litre Bottles	32.0	130.00	32.50	180.00
AIO16	-EA	61-Litre Keg*	133.0	509.25	-.-	662.10
AIO30	-EA	113-Litre Drum*	245.0	936.65	-.-	1,189.60
AIO55	-EA	208-Litre Drum*	439.0	1,652.40	-.-	2,065.55
AIO27	-EA	1,041-Litre Tote*	2,119.0	8,216.15	-.-	10,270.25

SABER® Professional Synthetic 2-Stroke Oil

Provides superior protection for handheld two-stroke equipment at any mix ratio up to 100:1, offering the ultimate in convenience.



Stock No.	Units	Pkg/Size	Wt. Lbs., ea.	Wholesale Cost, ea.	Cost Per Unit	Min. Sugg. Retail, ea.
<i>ISO-L-EGD / API TC / JASO FD</i>						
ATPSFC	-EA	(1) 189-ml. Bottle	0.6	4.20	-.-	5.75
ATPSFC	-CA	(12) 189-ml. Bottles	7.2	48.00	4.00	67.80
ATPBCC	-EA	(1) 237-ml. Bottle	0.7	4.70	-.-	6.25
ATPBCC	-CA	(12) 237-ml. Bottles	8.4	53.40	4.45	73.80
ATPQTC	-EA	(1) 946-ml. Bottle	2.1	12.15	-.-	15.70
ATPQTC	-CA	(12) 946-ml. Bottles	25.2	138.60	11.55	187.20
ATP30	-EA	113-Litre Drum*	250.0	1,264.35	-.-	1,580.50
ATP55	-EA	208-Litre Drum*	449.0	2,252.00	-.-	2,770.05

Synthetic Chaincase & Gear Oil

Provides superior protection and performance for enclosed chains and gears found in snowmobiles, ATVs and general equipment.



Stock No.	Units	Pkg/Size	Wt. Lbs., ea.	Wholesale Cost, ea.	Cost Per Unit	Min. Sugg. Retail, ea.
TCCCNC	-EA	(1) 473-ml. Bottle	1.3	10.85	-.-	14.70
TCCCNC	-CA	(6) 473-ml Bottles	7.8	61.80	10.30	87.90
TCC05	-EA	18.9-Litre Pail	32.4	245.50	-.-	326.55



Synthetic Air Tool Oil

Effectively lubricates rotary- and piston-type air tool bearings and motors, while conditioning rubber and plastic seals and O-rings.

Stock No.	Units	Pkg/Size	Wt. Lbs., ea.	Wholesale Cost, ea.	Cost Per Unit	Min. Sugg. Retail, ea.
AIRBA	-EA	(1) 4-oz. Bottle	0.4	4.50	-.	6.10
AIRBA	-CA	(12) 4-oz. Bottles	4.8	51.00	4.25	72.00



Semi-Synthetic Bar and Chain Oil

Delivers excellent lubrication and protection, helping extend the life of bar and chain applications.

Stock No.	Units	Pkg/Size	Wt. Lbs., ea.	Wholesale Cost, ea.	Cost Per Unit	Min. Sugg. Retail, ea.
ABCQT	-EA	(1) 946-ml. Bottle	2.1	6.00	-.	7.80
ABCQT	-CA	(12) 946-ml. Bottles	25.2	68.40	5.70	92.40
ABC1G	-EA	(1) 3.78-Litre Bottle	8.1	23.25	-.	30.25
ABC1G	-CA	(4) 3.78-Litre Bottles	32.4	88.40	22.10	119.40
ABC05	-EA	18.9-Litre Pail	39.2	107.20	-.	142.65
ABC55	-EA	208-Litre Drum*	436.2	974.20	-.	1,198.35

DOMINATOR® Synthetic Racing Grease

High-speed, high-heat and heavy-load bearing and chassis lubrication for all race applications on snow, dirt, water and track.



Stock No.	Units	Pkg/Size	Wt. Lbs., ea.	Wholesale Cost, ea.	Cost Per Unit	Min. Sugg. Retail, ea.
<i>NLGI No. 2, GC/LB</i>						
GRGCR	-EA	(1) 397-g. Cartridge	1.0	12.90	-.	18.00
GRGCR	-CA	(10) 397-g. Cartridges	10.0	125.50	12.55	173.50
GRGCR	-PK	(40) 397-g. Cartridges	40.0	490.00	12.25	662.00

Synthetic Polymeric Off-Road Grease

Extreme-pressure, moly-fortified grease that provides outstanding protection for steering knuckles, spring shackles, heavy equipment pivot joints and other components operating in high-load, low-speed conditions.



Stock No.	Units	Pkg/Size	Wt. Lbs., ea.	Wholesale Cost, ea.	Cost Per Unit	Min. Sugg. Retail, ea.
Synthetic Polymeric Off-Road Grease NLGI #2						
<i>NLGI No. 2</i>						
GPOR2CR	-EA	(1) 425-g. Cartridge	1.0	10.00	-.	13.95
GPOR2CR	-CA	(10) 425-g. Cartridges	10.0	98.00	9.80	132.50
GPOR2CR	-PK	(40) 425-g. Cartridges	40.0	388.00	9.70	524.00
GPOR235	-EA	15.8-kg. Lug*	40.0	337.05	-.	438.25
GPOR299	-EA	54.4-kg. Keg*	132.0	1,124.10	-.	1,438.90
GPOR240	-EA	181.4-kg. Drum*	415.0	3,636.90	-.	4,473.45

Synthetic Polymeric Off-Road Grease NLGI #1



Stock No.	Units	Pkg/Size	Wt. Lbs., ea.	Wholesale Cost, ea.	Cost Per Unit	Min. Sugg. Retail, ea.
<i>NLGI No. 1</i>						
GPOR1CR	-EA	(1) 425-g. Cartridge	1.0	9.55	-.	13.35
GPOR1CR	-CA	(10) 425-g. Cartridges	10.0	94.50	9.45	128.00
GPOR1CR	-PK	(40) 425-g. Cartridges	40.0	376.00	9.40	508.00
GPOR135	-EA	15.8-kg. Lug*	40.0	322.50	-.	419.30
GPOR199	-EA	54.4-kg. Keg*	132.0	1,075.20	-.	1,376.30

Synthetic Polymeric Truck, Chassis and Equipment Grease

Delivers excellent wear protection and performance in the severe-service, extreme-pressure environments faced by medium- and heavy-duty over-the-road trucks and equipment.



Stock No.	Units	Pkg/Size	Wt. Lbs., ea.	Wholesale Cost, ea.	Cost Per Unit	Min. Sugg. Retail, ea.
Synthetic Polymeric Truck, Chassis and Equipment Grease NLGI #2						
<i>NLGI No. 2</i>						
GPTR2CR	-EA	(1) 397-g. Cartridge	1.0	8.90	-.	12.45
GPTR2CR	-CA	(10) 397-g. Cartridges	10.0	87.50	8.75	118.50
GPTR2CR	-PK	(40) 397-g. Cartridges	40.0	346.00	8.65	468.00
GPTR235	-EA	15.8-kg. Lug*	40.0	321.90	-.	418.50
GPTR299	-EA	54.4-kg. Keg*	132.0	1,072.20	-.	1,372.50
GPTR240	-EA	181.4-kg. Drum*	415.0	3,469.35	-.	4,267.35



Stock No.	Units	Pkg/Size	Wt. Lbs., ea.	Wholesale Cost, ea.	Cost Per Unit	Min. Sugg. Retail, ea.
Synthetic Polymeric Truck, Chassis and Equipment Grease NLGI #1						
<i>NLGI No. 1</i>						
GPTR1CR	-EA	(1) 397-g. Cartridge	1.0	8.20	--	11.50
GPTR1CR	-CA	(10) 397-g. Cartridges	10.0	81.00	8.10	109.50
GPTR1CR	-PK	(40) 397-g. Cartridges	40.0	318.00	7.95	430.00
GPTR135	-EA	15.8-kg. Lug*	40.0	293.50	--	381.60
GPTR199	-EA	54.4-kg. Keg*	132.0	974.80	--	1,247.80
GPTR140	-EA	181.4-kg. Drum*	415.0	3,144.60	--	3,867.90



Stock No.	Units	Pkg/Size	Wt. Lbs., ea.	Wholesale Cost, ea.	Cost Per Unit	Min. Sugg. Retail, ea.
Synthetic Multi-Purpose Grease						
Delivers premium wear protection for bearings, bushings, chassis lubrication and other applications.						
<i>NLGI No. 2, GC/LB</i>						
GLC3P	-EA	(3) 85-g. Cartridges	0.6	10.65	--	14.85
GLC3P	-CA	(30) 85-g. Cartridges	5.6	101.50	10.15	140.50
GLCGN	-EA	(1) Grease Gun Kit	2.0	38.35	--	53.40
GLCCR	-EA	(1) 397-g. Cartridge	1.0	8.60	--	12.05
GLCCR	-CA	(10) 397-g. Cartridges	10.0	82.50	8.25	114.00
GLCCR	-PK	(40) 397-g. Cartridges	40.0	320.00	8.00	434.00
GLC35	-EA	15.8-kg. Lug*	40.0	278.55	--	362.20
GLC99	-EA	54.4-kg. Keg*	132.0	899.85	--	1,151.85
GLC40	-EA	181.4-kg. Drum*	415.0	2,920.85	--	3,592.70



Stock No.	Units	Pkg/Size	Wt. Lbs., ea.	Wholesale Cost, ea.	Cost Per Unit	Min. Sugg. Retail, ea.
Synthetic Water-Resistant Grease						
Provides outstanding water-washout and spray-off resistance for applications frequently exposed to water, mud, snow or ice.						
<i>NLGI No. 2, GC/LB</i>						
GWR3P	-EA	(3) 85-g. Cartridges	0.6	11.35	--	15.85
GWR3P	-CA	(30) 85-g. Cartridges	5.6	108.50	10.85	150.00
GWR3P	-PK	(40) 397-g. Cartridges	40.0	330.00	8.25	446.00
GWR3P	-EA	15.8-kg. Lug*	40.0	288.95	--	375.70
GWR3P	-EA	54.4-kg. Keg*	132.0	927.90	--	1,187.75



Stock No.	Units	Pkg/Size	Wt. Lbs., ea.	Wholesale Cost, ea.	Cost Per Unit	Min. Sugg. Retail, ea.
Synthetic Fifth-Wheel Grease						
Heavy-duty lubricant that provides outstanding protection and performance in the heavily loaded, harsh operating environments of fifth-wheel hitches used in trucking and trailer applications.						
<i>NLGI No. 2</i>						
FWGTB	-EA	(1) 284-g. Tube	0.7	9.55	--	12.70
FWGTB	-CA	(12) 284-g. Tubes	8.4	109.80	9.15	151.80



Stock No.	Units	Pkg/Size	Wt. Lbs., ea.	Wholesale Cost, ea.	Cost Per Unit	Min. Sugg. Retail, ea.
Synthetic High Viscosity Lithium Complex Grease						
Excellent for use in heavy-duty industrial and off-road applications where equipment is working under adverse conditions, such as exposure to environmental elements, slow, heavily loaded applications and shock-loading conditions.						
<i>NLGI No. 2</i>						
GVCCR	-EA	(1) 397-g. Cartridge	1.0	9.15	--	12.90
GVCCR	-CA	(10) 397-g. Cartridges	10.0	88.50	8.85	122.50
GVCCR	-PK	(40) 397-g. Cartridges	40.0	342.00	--	462.00
GVC35	-EA	15.8-kg. Lug*	40.0	300.20	--	390.30
GVC99	-EA	54.4-kg. Keg*	132.0	966.35	--	1,237.00



Stock No.	Units	Pkg/Size	Wt. Lbs., ea.	Wholesale Cost, ea.	Cost Per Unit	Min. Sugg. Retail, ea.
Semi-Fluid Synthetic EP Grease						
Provides excellent wear protection and is ideal for leaky gear boxes in industrial and fleet applications, centralized lubrication systems and difficult-to-service applications.						
<i>NLGI No. 00</i>						
GSF35	-EA	15.8-kg. Lug*	40.0	453.15	--	589.20

*Not stocked in all distribution centers. Call for availability.

†Product cannot be shipped air freight or parcel post.

X-Treme Synthetic Food Grade Grease

Ultra-premium lubricant designed for high levels of protection in food and pharmaceutical industry equipment.



Stock No.	Units	Pkg/Size	Wt. Lbs., ea.	Wholesale Cost, ea.	Cost Per Unit	Min. Sugg. Retail, ea.
<i>NLGI No. 2 • NSF-approved (formerly USDA H-1)</i>						
GXCCR	-EA	(1) 397-g. Cartridge	1.0	11.60	-.-	16.20
GXCCR	-CA	(10) 397-g. Cartridges	10.0	112.50	11.25	155.50
GXCCR	-PK	(40) 397-g. Cartridges	40.0	438.00	10.95	592.00
GXC35	-EA	15.8-kg. Lug*	40.0	395.45	-.-	514.15
GXC99	-EA	54.4-kg. Keg*	132.0	1,292.90	-.-	1,654.95
GXC40	-EA	181.4-kg. Drum*	415.0	4,205.05	-.-	5,172.30

Arctic Synthetic Grease

Provides extreme low-temperature pumpability and superior protection for equipment operating in harsh climates where temperatures drop well below freezing.



Stock No.	Units	Pkg/Size	Wt. Lbs., ea.	Wholesale Cost, ea.	Cost Per Unit	Min. Sugg. Retail, ea.
<i>NLGI No. 1</i>						
GECCR	-EA	(1) 425-g. Cartridge	1.0	13.55	-.-	18.90
GECCR	-CA	(10) 425-g. Cartridges	10.0	132.00	13.20	178.50
GECCR	-PK	(40) 425-g. Cartridges	40.0	518.00	12.95	700.00

Synthetic Tractor Hydraulic/Transmission Oil

Formulated for combinations of transmission, hydraulic systems, final drives, power take-off systems and wet brakes in heavy-duty farm and industrial equipment as well as commercial and residential lawn tractors.



Stock No.	Units	Pkg/Size	Wt. Lbs., ea.	Wholesale Cost, ea.	Cost Per Unit	Min. Sugg. Retail, ea.
<i>SAE 5W-30</i>						
ATHQT	-EA	(1) 946-ml. Bottle	2.1	11.10	-.-	14.35
ATHQT	-CA	(12) 946-ml. Bottles	25.2	126.60	10.55	171.00
ATH05	-EA	18.9-Litre Pail	39.0	203.10	-.-	270.15
ATH30	-EA	113-Litre Drum*	242.1	1,145.60	-.-	1,432.00
ATH55	-EA	208-Litre Drum*	434.2	2,032.45	-.-	2,500.00
ATH27	-EA	1,041-Litre Tote*	2,095.8	10,122.70	-.-	12,450.95

Synthetic Multi-Viscosity Hydraulic Oil

Cost-effective formulation that provides all-season protection and reliable operation in most types of hydraulic systems.

Stock No.	Units	Pkg/Size	Wt. Lbs., ea.	Wholesale Cost, ea.	Cost Per Unit	Min. Sugg. Retail, ea.
-----------	-------	----------	---------------	---------------------	---------------	------------------------

Synthetic Multi-Viscosity Hydraulic Oil - ISO 22

Denison HF-0, HF-1, HF-2 • Vickers M-2950-S & I-286-S • Cincinnati Milacron P-68, P-69, P-70

HVG05	-EA	18.9-Litre Pail	39.0	139.50	-.-	185.60
HVG55	-EA	208-Litre Drum*	426.0	1,333.60	-.-	1,640.40
HVG27	-EA	1,041-Litre Tote*	2,053.0	6,621.55	-.-	8,144.55

Synthetic Multi-Viscosity Hydraulic Oil - ISO 32

Denison HF-0, HF-1, HF-2 • Vickers M-2950-S & I-286-S • Cincinnati Milacron P-68, P-69, P-70

HVH05	-EA	18.9-Litre Pail	39.0	141.30	-.-	188.00
HVH55	-EA	208-Litre Drum*	424.0	1,351.60	-.-	1,662.50
HVH27	-EA	1,041-Litre Tote*	2,043.0	6,713.55	-.-	8,257.75

Synthetic Multi-Viscosity Hydraulic Oil - ISO 46

Denison HF-0, HF-1, HF-2 • Vickers M-2950-S & I-286-S • Cincinnati Milacron P-68, P-69, P-70

HVI05	-EA	18.9-Litre Pail	38.0	142.90	-.-	190.10
HVI55	-EA	208-Litre Drum*	421.0	1,369.55	-.-	1,684.55
HVI27	-EA	1,041-Litre Tote*	2,028.0	6,804.50	-.-	8,369.60

Synthetic Multi-Viscosity Hydraulic Oil - ISO 68

Denison HF-0, HF-1, HF-2 • Vickers M-2950-S & I-286-S • Cincinnati Milacron P-68, P-69, P-70

HVJ05	-EA	18.9-Litre Pail	39.0	152.90	-.-	203.45
HVJ55	-EA	208-Litre Drum*	426.0	1,479.55	-.-	1,819.90
HVJ27	-EA	1,041-Litre Tote*	2,053.0	7,352.35	-.-	9,043.40

Synthetic Biodegradable Hydraulic Oil

A premium lubricant designed to biodegrade to its natural state when subjected to sunlight, water and microbial activity.

Stock No.	Units	Pkg/Size	Wt. Lbs., ea.	Wholesale Cost, ea.	Cost Per Unit	Min. Sugg. Retail, ea.
-----------	-------	----------	---------------	---------------------	---------------	------------------------

ISO 46 • ISO 15380 • VDMA 24568 HEES • Bosch Rexroth RD90221-1 • OECD 301B Readily Biodegradable • Swedish Standard SS155434 • MIA Vamil • Vessel General Permit

BHO05	-EA	18.9-Litre Pail	43.0	320.60	-.-	426.50
BHO55	-EA	208-Litre Drum*	468.0	3,326.00	-.-	4,091.05
BHO27	-EA	1,041-Litre Tote*	2,276.0	16,593.00	-.-	20,409.45

*Not stocked in all distribution centers. Call for availability.

†Product cannot be shipped air freight or parcel post.

Synthetic Anti-Wear Hydraulic Oil

Offers superior protection for hard-working hydraulic systems from the stress of high-pressure, high-load and heavy-duty operations.

Stock No.	Units	Pkg/Size	Wt. Lbs., ea.	Wholesale Cost, ea.	Cost Per Unit	Min. Sugg. Retail, ea.
Synthetic Anti-Wear Hydraulic Oil - ISO 22						
<i>Denison HF-0, HF-1, HF-2 • Vickers M-2950-S & I-286-S • Cincinnati Milacron P-68, P-69, P-70 • MEHF</i>						
AWG05	-EA	18.9-Litre Pail	38.0	227.40	-.-	302.50
AWG55	-EA	208-Litre Drum*	422.8	2,301.15	-.-	2,830.45
Synthetic Anti-Wear Hydraulic Oil - ISO 32						
<i>Denison HF-0, HF-1, HF-2 • Vickers M-2950-S & I-286-S • Cincinnati Milacron P-68, P-69, P-70 • MEHF</i>						
AWH05	-EA	18.9-Litre Pail	38.9	205.50	-.-	273.40
AWH30	-EA	113-Litre Drum*	241.3	1,159.65	-.-	1,449.60
AWH55	-EA	208-Litre Drum*	432.7	2,059.40	-.-	2,533.10
AWH27	-EA	1,041-Litre Tote*	2,088.4	10,250.90	-.-	12,608.65
Synthetic Anti-Wear Hydraulic Oil - ISO 46						
<i>Denison HF-0, HF-1, HF-2 • Vickers M-2950-S & I-286-S • Cincinnati Milacron P-68, P-69, P-70 • MEHF</i>						
AWI05	-EA	18.9-Litre Pail	38.9	212.95	-.-	283.30
AWI55	-EA	208-Litre Drum*	432.9	2,139.55	-.-	2,631.70
AWI27	-EA	1,041-Litre Tote*	2,089.5	10,652.95	-.-	13,103.20

Synthetic Compressor Oil

Superior protection for rotary screw, rotary vane, reciprocating and other compressor applications.

Stock No.	Units	Pkg/Size	Wt. Lbs., ea.	Wholesale Cost, ea.	Cost Per Unit	Min. Sugg. Retail, ea.
Synthetic Compressor Oil - ISO 32, SAE 10W						
PCH05	-EA	18.9-Litre Pail	38.4	237.55	-.-	316.00
PCH55	-EA	208-Litre Drum*	427.2	2,401.65	-.-	2,954.10
PCH27	-EA	1,041-Litre Tote*	2,060.9	11,962.05	-.-	14,713.35
Synthetic Compressor Oil - ISO 46, SAE 20						
PCIQTC	-EA	(1) 946-ml. Bottle	2.0	13.15	-.-	17.00
PCIQTC	-CA	(12) 946-ml. Bottles	24.0	150.00	12.50	202.80
PCI05	-EA	18.9-Litre Pail	38.4	243.10	-.-	323.35
PCI30	-EA	113-Litre Drum*	238.3	1,384.55	-.-	1,730.75
PCI55	-EA	208-Litre Drum*	427.3	2,463.95	-.-	3,030.70
PCI27	-EA	1,041-Litre Tote*	2,061.5	12,278.00	-.-	15,102.00
Synthetic Compressor Oil - ISO 68, SAE 30						
PCJ05	-EA	18.9-Litre Pail	39.0	243.80	-.-	324.35
PCJ55	-EA	208-Litre Drum*	429.4	2,471.55	-.-	3,040.05
PCJ27	-EA	1,041-Litre Tote*	2,072.2	12,314.95	-.-	15,147.45
Synthetic Compressor Oil - ISO 100, SAE 30/40						
PCKQTC	-EA	(1) 946-ml. Bottle	2.1	13.65	-.-	17.70
PCKQTC	-CA	(12) 946-ml. Bottles	25.2	156.00	13.00	211.20
PCK05	-EA	18.9-Litre Pail	38.8	252.35	-.-	335.65
PCK30	-EA	113-Litre Drum*	240.8	1,440.50	-.-	1,800.65
PCK55	-EA	208-Litre Drum*	431.8	2,566.25	-.-	3,156.50
PCK27	-EA	1,041-Litre Tote*	2,084.0	12,787.35	-.-	15,728.45



SIROCCO® Synthetic Compressor Oil

Recommended as a direct replacement for PAG compressor oils such as Sullair Sullube 32 and Ingersoll-Rand SSR Ultra Coolant.

Stock No.	Units	Pkg/Size	Wt. Lbs., ea.	Wholesale Cost, ea.	Cost Per Unit	Min. Sugg. Retail, ea.
<i>ISO 32/46</i>						
SEI05	-EA	18.9-Litre Pail	42.0	331.00	-.-	440.25
SEI55	-EA	208-Litre Drum*	466.0	3,429.25	-.-	4,218.00
SEI27	-EA	1,041-Litre Tote*	2,257.0	17,103.20	-.-	21,037.00

PowerCore Air Filters*

AMSOIL offers premium PowerCore Air Filters for Ford 6.0L and GM 6.6L applications.

Stock No.	Units	Pkg/Size	Wt. Lbs., ea.	Wholesale Cost, ea.	Cost Per Unit	Min. Sugg. Retail, ea.
Donaldson PowerCore Air Filter for Ford 6.0L Power Stroke Diesel Applications						
P603577	-EA	(1) Air Filter	4.4	98.05	-.-	132.40
Donaldson PowerCore Air Filter for GM 6.6L Duramax Diesel Applications						
P610875	-EA	(1) Air Filter	2.4	73.85	-.-	99.70

*Not stocked in all distribution centers. Call for availability.

†Product cannot be shipped air freight or parcel post.



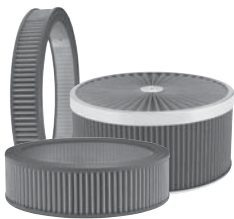
Ea Universal Air Induction Filters

Designed to replace stock oil-wetted gauze or foam conical filters that were supplied with custom induction systems produced by K&N, Injen, S&B, Green, AIRAID, AFE, TrueFlow and more.

Stock No.	Units	Pkg/Size	Wt. Lbs., ea.	Wholesale Cost, ea.	Min. Sugg. Retail, ea.
EAAU3050 -EA	(1)	EaAU Filter	1.5	50.25	67.10
EAAU3051 -EA	(1)	EaAU Filter	1.4	50.25	67.10
EAAU3090 -EA	(1)	EaAU Filter	1.5	70.75	94.40
EAAU3555 -EA	(1)	EaAU Filter	1.3	62.55	83.50
EAAU3560 -EA	(1)	EaAU Filter	1.6	52.65	70.30
EAAU3570 -EA	(1)	EaAU Filter	1.3	57.40	76.60
EAAU3590 -EA	(1)	EaAU Filter	1.6	70.75	94.40
EAAU4070 -EA	(1)	EaAU Filter	1.4	62.55	83.50
EAAU4075 -EA	(1)	EaAU Filter	2.0	63.55	84.80
EAAU4090 -EA	(1)	EaAU Filter	1.6	64.55	86.15
EAAU4091 -EA	(1)	EaAU Filter	3.6	94.95	126.70
EAAU4095 -EA	(1)	EaAU Filter	2.2	67.60	90.25
EAAU4178 -EA	(1)	EaAU Filter	2.5	70.75	94.40
EAAU4510 -EA	(1)	EaAU Filter	2.8	77.90	103.95
EAAU4560 -EA	(1)	EaAU Filter	1.5	52.65	70.30
EAAU6065 -EA	(1)	EaAU Filter	1.8	61.45	82.10
EAAU6075 -EA	(1)	EaAU Filter	1.8	67.60	90.25
EAAU6080 -EA	(1)	EaAU Filter	1.7	69.75	93.10

Ea® Racing Air Filters*

Specially designed for racing and street rod enthusiasts who desire superior protection in carbureted applications. Kits contain filter, base & lid.



Stock No.	Units	Pkg/Size	Wt. Lbs., ea.	Wholesale Cost, ea.	Min. Sugg. Retail, ea.
EAAR31 -EA	(1)	Replacement Filter	4.7	69.70	93.00
EAAR2102 -EA	(1)	Kit - 14" Dia. 2.75" Ht.	4.7	132.50	176.70
EAAR2103 -EA	(1)	Kit - 14" Dia. 3.625 Ht.	5.0	132.55	176.75
EAAR2104 -EA	(1)	Kit - 14" Dia. 4 11/16" Ht.	5.3	132.55	176.75
EAAR2105 -EA	(1)	Kit - 14" Dia. 5 11/16" Ht.	5.6	139.35	185.85
EAAR2106 -EA	(1)	Kit - 14" Dia. 6.875" Ht.	5.9	139.35	185.85
EAAR2140 -EA	(1)	Replacement Base	1.0	52.60	70.25
EAAR2141 -EA	(1)	Replacement Lid	1.7	71.05	94.75
EAAR2142 -EA	(1)	Replacement Filter 2" Ht.	2.0	52.65	70.30
EAAR2143 -EA	(1)	Replacement Filter 3" Ht.	2.3	52.65	70.30
EAAR2144 -EA	(1)	Replacement Filter 4" Ht.	2.6	52.65	70.30
EAAR2145 -EA	(1)	Replacement Filter 5" Ht.	2.9	55.40	73.95
EAAR2146 -EA	(1)	Replacement Filter 6" Ht.	3.2	55.45	74.00

Ea® Pre-Filters*

Help prevent large particles from sticking to EaAR and EaAU Filters and blocking the flow of air in racing applications.

Stock No.	Units	Pkg/Size	Wt. Lbs., ea.	Wholesale Cost, ea.	Min. Sugg. Retail, ea.
Ea Pre-Filters for EaAR Filters					
EAPF01 -EA	(1)	EAAR2102	0.2	19.10	25.50
EAPF02 -EA	(1)	EAAR2102‡	0.2	27.25	36.30
EAPF03 -EA	(1)	EAAR2103	0.2	19.10	25.50
EAPF04 -EA	(1)	EAAR2103‡	0.2	27.25	36.30
EAPF05 -EA	(1)	EAAR2104	0.2	19.10	25.50
EAPF06 -EA	(1)	EAAR2104‡	0.2	27.25	36.30
EAPF07 -EA	(1)	EAAR2105	0.2	19.10	25.50
EAPF08 -EA	(1)	EAAR2105‡	0.2	27.25	36.30
EAPF09 -EA	(1)	EAAR2106	0.2	27.25	36.30
EAPF10 -EA	(1)	EAAR2106‡	0.2	27.25	36.30
EAPF11 -EA	(1)	EAAU3560/4560	0.2	21.85	29.15
EAPF12 -EA	(1)	EAAU4095	0.2	25.95	34.60
EAPF13 -EA	(1)	EAAU4091	0.2	28.70	38.25
EAPF14 -EA	(1)	EAAU4178	0.2	25.95	34.60

‡Fits Filter Unit With Top

Ea Pre-Filters for EaAU Filters

Stock No.	Units	Pkg/Size	Wt. Lbs., ea.	Wholesale Cost, ea.	Min. Sugg. Retail, ea.
EAPF15	-EA	EAAU6080/6081	0.2	21.85	29.15
EAPF16	-EA	EAAU6075	0.2	21.85	29.15
EAPF17	-EA	EAAU6065	0.2	21.85	29.15
EAPF18	-EA	EAAU4075	0.2	21.85	29.15
EAPF19	-EA	EAAU4070	0.2	21.85	29.15
EAPF20	-EA	EAAU4510	0.2	25.95	34.60
EAPF21	-EA	EAAU3090/3590/4090	0.2	21.85	29.15
EAPF22	-EA	EAAU3555	0.2	19.10	25.50
EAPF24	-EA	EAAU3050	0.2	21.85	29.15
EAPF25	-EA	EAAU3051	0.2	21.85	29.15
EAPF26	-EA	EAAU3570	0.2	19.10	25.50
EAPF27	-EA	POD	0.2	13.60	18.25

Oil Filters

Provide greater efficiency, capacity and durability than cellulose filters, extending engine and filter life and reducing engine wear. Capable of extending service intervals. Note: Change oil filter at every oil change.



Stock No.	Units	Pkg/Size	Wt. Lbs., ea.	Wholesale Cost, ea.	Min. Sugg. Retail, ea.
EA15K01	-EA	(1) Filter	0.3	21.15	28.00
EA15K01	-CA	(12) Filters	3.2	237.00	311.60
EA15K02	-EA	(1) Filter	0.3	21.50	28.35
EA15K02	-CA	(12) Filters	3.6	240.65	316.35
EA15K03	-EA	(1) Filter	0.3	19.70	26.05
EA15K03	-CA	(12) Filters	3.0	220.65	290.05
EA15K04	-EA	(1) Filter	0.4	20.50	27.15
EA15K04	-CA	(12) Filters	4.8	229.40	301.60
EA15K08	-EA	(1) Filter	0.6	21.80	28.85
EA15K08	-CA	(12) Filters	6.6	244.20	321.30
EA15K09	-EA	(1) Filter	0.5	19.70	26.20
EA15K09	-CA	(12) Filters	6.0	220.35	289.80
EAO11	-EA	(1) Filter	1.1	18.10	23.90
EAO11	-CA	(12) Filters	12.6	202.80	266.60
EA15K12	-EA	(1) Filter	0.5	17.75	23.45
EA15K12	-CA	(12) Filters	6.0	198.45	261.45
EA15K13	-EA	(1) Filter	0.7	18.65	24.70
EA15K13	-CA	(12) Filters	7.8	208.65	274.35
EAO15	-EA	(1) Filter	1.4	19.60	25.85
EAO15	-CA	(12) Filters	16.2	219.60	289.00
EA15K16	-EA	(1) Filter	0.3	18.65	24.70
EA15K16	-CA	(12) Filters	3.6	208.65	274.35
EAO17	-EA	(1) Filter	0.9	17.85	23.60
EAO17	-CA	(12) Filters	10.8	200.05	263.00
EA15K19	-EA	(1) Filter	1.0	18.65	24.70
EA15K19	-CA	(12) Filters	12.0	208.65	274.35
EA15K20	-EA	(1) Filter	0.7	19.35	25.55
EA15K20	-CA	(12) Filters	8.4	216.80	285.05
EAO23	-EA	(1) Filter	0.9	18.10	23.85
EAO23	-CA	(12) Filters	10.8	202.65	266.20
EAO24	-EA	(1) Filter	1.4	19.70	26.00
EAO24	-CA	(12) Filters	16.2	220.80	290.05
EAO26	-EA	(1) Filter	1.5	21.40	28.20
EAO26	-CA	(12) Filters	17.4	239.80	314.90
EA15K29	-EA	(1) Filter	0.8	18.80	24.85
EA15K29	-CA	(12) Filters	9.0	210.45	276.60
EA15K32	-EA	(1) Filter	0.8	18.50	24.45
EA15K32	-CA	(12) Filters	9.0	206.70	271.95
EAO34	-EA	(1) Filter	1.0	19.45	25.60
EAO34	-CA	(12) Filters	11.4	217.65	286.10
EA15K35	-EA	(1) Filter	0.1	18.65	24.70
EA15K35	-CA	(12) Filters	1.4	208.65	274.35
EA15K37	-EA	(1) Filter	1.0	16.00	21.15
EA15K37	-CA	(12) Filters	12.0	178.80	236.40

Stock No.	Units	Pkg/Size	Wt. Lbs., ea.	Wholesale Cost, ea.	Min. Sugg. Retail, ea.
EA038	-EA	(1) Filter	0.8	19.30	25.40
EA038	-CA	(12) Filters	9.0	216.10	284.15
EA15K39	-EA	(1) Filter	1.0	25.15	33.30
EA15K39	-CA	(12) Filters	12.0	280.80	369.00
EAO42	-EA	(1) Filter	1.2	18.85	24.90
EAO42	-CA	(12) Filters	13.8	211.20	278.05
EA15K43	-EA	(1) Filter	0.2	21.15	28.00
EA15K43	-CA	(12) Filters	1.8	237.00	311.60
EA15K49	-EA	(1) Filter	1.0	25.90	34.30
EA15K49	-CA	(6) Filters	6.0	145.20	191.05
EA15K50	-EA	(1) Filter	0.8	17.20	22.80
EA15K50	-CA	(12) Filters	9.0	192.60	253.45
EA15K51	-EA	(1) Filter	0.8	17.70	23.40
EA15K51	-CA	(12) Filters	9.6	197.85	260.10
EAO52	-EA	(1) Filter	1.4	19.65	25.90
EAO52	-CA	(12) Filters	16.8	220.20	289.50
EA15K53	-EA	(1) Filter	1.0	16.55	21.90
EA15K53	-CA	(12) Filters	12.0	185.25	243.65
EA15K54	-EA	(1) Filter	1.0	23.80	31.50
EA15K54	-CA	(12) Filters	12.0	265.80	349.20
EAO55	-EA	(1) Filter	1.0	26.55	34.95
EAO55	-CA	(12) Filters	12.0	296.40	390.00
EAO59	-EA	(1) Filter	1.1	19.15	25.25
EAO59	-CA	(12) Filters	12.6	213.85	281.55
EAO64	-EA	(1) Filter	0.9	18.15	23.90
EAO64	-CA	(12) Filters	10.2	203.05	266.75
EAO80	-EA	(1) Filter	1.6	21.00	27.70
EAO80	-CA	(12) Filters	18.6	235.20	308.95
EA15K88	-EA	(1) Filter	0.7	39.40	51.80
EA15K88	-CA	(12) Filters	7.8	441.60	580.05
EAO98	-EA	(1) Filter	1.7	31.50	41.65
EAO98	-CA	(12) Filters	19.8	352.70	463.70
EAO99	-EA	(1) Filter	2.3	33.00	43.45
EAO99	-CA	(6) Filters	13.5	184.80	242.80

Heavy-Duty Extended-Life Oil Filters

Provide excellent performance in over-the-road trucks, dump trucks, refuse haulers, buses, farm equipment and other heavy-duty on- and off-road diesel and gasoline applications. Note: Change oil filter at every oil change.



Stock No.	Units	Pkg/Size	Wt. Lbs., ea.	Wholesale Cost, ea.	Min. Sugg. Retail, ea.
EAHD2160	-EA	(1) Filter	2.9	38.95	51.60
EAHD2160	-CA	(6) Filters	17.4	218.40	287.30
EAHD3000	-EA	(1) Filter	3.5	60.25	79.80
EAHD3000	-CA	(6) Filters	21.0	337.65	444.20
EAHD3191	-EA	(1) Filter	2.6	38.75	51.35
EAHD3191	-CA	(6) Filters	15.6	217.05	285.55
EAHD4005	-EA	(1) Filter	4.7	46.65	61.75
EAHD4005	-CA	(6) Filters	28.2	261.25	343.65
EAHD9000	-EA	(1) Filter	4.0	80.30	106.15
EAHD9000	-CA	(6) Filters	23.7	449.85	591.65
EAHD9025	-EA	(1) Filter	4.0	68.30	90.25
EAHD9025	-CA	(6) Filters	24.0	382.80	503.60

Super Duty Oil Filter

For original equipment manufacturer-recommended service intervals in Ford 6.0/6.4L Power Stroke Diesel pickups.



Stock No.	Units	Pkg/Size	Wt. Lbs., ea.	Wholesale Cost, ea.	Min. Sugg. Retail, ea.
SDF88	-EA	(1) Oil Filter	0.5	23.80	31.30

Motorcycle Oil Filters



"C" designates chrome

EAOM122 and EAOM133C available while supplies last. EAOM134 or EAOM134C are suitable replacements.

Most efficient filters available for motorcycles and other powersports equipment. Available in black or chrome. Note: Change oil filter at every oil change.

Stock No.	Units	Pkg/Size	Wt. Lbs., ea.	Wholesale Cost, ea.	Min. Sugg. Retail, ea.
EAOM103	-EA	(1) Motorcycle Oil Filter	0.5	17.65	22.85
EAOM103C	-EA	(1) Motorcycle Oil Filter	0.5	22.70	29.30
EAOM109	-EA	(1) Motorcycle Oil Filter	0.5	18.05	23.30
EAOM122	-EA	(1) Motorcycle Oil Filter	0.8	18.70	24.15
EAOM133C	-EA	(1) Motorcycle Oil Filter	1.0	22.85	29.45
EAOM134	-EA	(1) Motorcycle Oil Filter	0.8	15.90	20.55
EAOM134C	-EA	(1) Motorcycle Oil Filter	0.8	19.40	25.05
EAOM135	-EA	(1) Motorcycle Oil Filter	0.8	16.60	21.45
EAOM135C	-EA	(1) Motorcycle Oil Filter	0.8	20.20	26.15
EAOM136C	-EA	(1) Motorcycle Oil Filter	0.8	18.55	24.00
EAOM138	-EA	(1) Motorcycle Oil Filter	0.7	19.30	24.85

Bypass Oil Filtration Systems, Filters and Parts*

Removes particles two microns and larger, virtually eliminating engine wear. Designed for use with AMSOIL Oil Filters.

Universal Single-Remote Bypass System

Includes mount, mounting hardware, hose and hose fittings. EaBP Bypass Oil Filter sold separately. EaBP120 will not work with this system.

Stock No.	Units	Pkg/Size	Wt. Lbs., ea.	Wholesale Cost, ea.	Min. Sugg. Retail, ea.
BMK21	-EA	(1) Single Remote Bypass Kit	3.8	294.30	382.65

DUAL GARD™ Bypass System

Ideal for engines with sump capacities greater than 20 liters. Links two AMSOIL EaBP Filters together. Includes mount, mounting hardware, hose and hose fittings. Requires two (2) Bypass Filters (sold separately). EaBP120 cannot be used with this system.

Stock No.	Units	Pkg/Size	Wt. Lbs., ea.	Wholesale Cost, ea.	Min. Sugg. Retail, ea.
BMK22	-EA	(1) DUAL-GARD Bypass Kit	6.7	332.25	431.95

Universal Dual Remote Bypass System

Includes mount, mounting hardware, hose and hose fittings. Note: Spin-on adapter, EaO26 full-flow oil filter and EaBP Bypass Oil Filter each sold separately.

Stock No.	Units	Pkg/Size	Wt. Lbs., ea.	Wholesale Cost, ea.	Min. Sugg. Retail, ea.
BMK23	-EA	(1) Dual Remote Filtration Kit	8.4	318.75	414.35

Ford 7.3L Dual Remote Bypass System

Includes mount, mounting hardware, hose, hose fittings, spin-on adapter, EaO26 full-flow oil filter and EaBP100 Bypass Filter.

Stock No.	Units	Pkg/Size	Wt. Lbs., ea.	Wholesale Cost, ea.	Min. Sugg. Retail, ea.
BMK26	-EA	(1) Ford Diesel Bypass Kit	14.7	409.60	532.50

GM 6.6L Dual Remote Bypass System (2001-2019)

Includes mount, mounting hardware, hose, hose fittings, spin-on adapter, EaO26 full-flow oil filter and EaBP100 Bypass Filter.

Stock No.	Units	Pkg/Size	Wt. Lbs., ea.	Wholesale Cost, ea.	Min. Sugg. Retail, ea.
BMK27	-EA	(1) Duramax Diesel Bypass Kit	13.7	409.60	532.45

Ford 6.7L Dual Remote Bypass System

Includes mount, mounting hardware, hose, hose fittings, spin-on adapter, EaO26 full-flow oil filter and EaBP100 Bypass Filter.

Stock No.	Units	Pkg/Size	Wt. Lbs., ea.	Wholesale Cost, ea.	Min. Sugg. Retail, ea.
BMK28	-EA	(1) Ford Diesel Bypass Kit	13.6	409.55	532.45

Heavy-Duty Bypass System

Maximum filtration performance for virtually all heavy-duty diesel applications, including Class 6, 7 and 8 heavy-duty trucks, off-road equipment, buses, generators, marine engines, logging and agricultural equipment. Includes mount, mounting hardware, hose, hose fittings and the EaBP120 filter. EaBP120 bypass filter is the only filter that will work with this system. For fitting suggestions and fitting locations, visit our Heavy-Duty Bypass System web page.

Stock No.	Units	Pkg/Size	Wt. Lbs., ea.	Wholesale Cost, ea.	Min. Sugg. Retail, ea.
BMK30	-EA	(1) Heavy-Duty Bypass Kit	11.8	347.75	452.10



Sample Valve Kit for Heavy-Duty Bypass System

Designed for use with the AMSOIL Heavy-Duty Bypass Filtration System (BMK30). Installs directly onto the BMK30 mount and includes the Deluxe Oil Sampling Valve (BP145), providing samples at the push of a button.

Stock No.	Units	Pkg/Size	Wt. Lbs., ea.	Wholesale Cost, ea.	Min. Sugg. Retail, ea.
BK30	-EA	(1) Sample Valve Kit for BMK30	0.7	44.35	55.40

Ford 6.0/6.4L Single-Remote Bypass System

This system connects to the engine through the filter housing and oil fill port and includes mount, mounting hardware, EaBP90, hose and hose fittings. Note: Full-flow filter (Ea15K88) not included with this system.

Stock No.	Units	Pkg/Size	Wt. Lbs., ea.	Wholesale Cost, ea.	Min. Sugg. Retail, ea.
BMK31	-EA	(1) Ford 6.0/6.4L Single-Remote Bypass System	7.0	516.65	671.60

GM 6.6L Single-Remote Bypass System (2001-2016)

This system connects to the engine through a full-flow filter adapter and oil fill port and includes mount, mounting hardware, EaBP90, hose and hose fittings. Note: Full-flow filter (EaO52) not included with this system.

Stock No.	Units	Pkg/Size	Wt. Lbs., ea.	Wholesale Cost, ea.	Min. Sugg. Retail, ea.
BMK32	-EA	(1) GM 6.6L Single-Remote Bypass System	7.0	496.80	645.80

Ford 6.7L Single-Remote Bypass System

This system connects to the engine through a full-flow filter adapter and oil fill port and includes mount, mounting hardware, EaBP90, hose and hose fittings. Note: Full-flow filter (EaO98) not included with this system.

Stock No.	Units	Pkg/Size	Wt. Lbs., ea.	Wholesale Cost, ea.	Min. Sugg. Retail, ea.
BMK33	-EA	(1) Ford 6.7L Single-Remote Bypass System	6.3	496.80	645.80

Cummins 5.0L/5.9L/6.7L Single-Remote Bypass System (2004-Current)

This system connects to the engine through an oil pressure port and oil fill port and includes mount, mounting hardware, EaBP90, hose and hose fittings. Note: Full-flow filter (EaO80) not included with this system. Installation on Nissan's 5.0L Cummins requires the optional Filter Adapter (BK1104). Visit www.amsoil.com to order.

Stock No.	Units	Pkg/Size	Wt. Lbs., ea.	Wholesale Cost, ea.	Min. Sugg. Retail, ea.
BMK34	-EA	(1) Cummins 5.0L/5.9L/6.7L Single-Remote Bypass System	5.4	397.45	516.65

Bypass Oil Filters

Stock No.	Units	Pkg/Size	Wt. Lbs., ea.	Wholesale Cost, ea.	Min. Sugg. Retail, ea.
EABP90	-EA	(1) 6" Bypass Filter	1.7	41.40	54.00
EABP100	-EA	(1) 7.5" Bypass Filter	2.0	45.90	59.85
EABP110	-EA	(1) 10.5" Bypass Filter	2.3	51.70	67.40
EABP120	-EA	(1) HD Bypass Filter for BMK30	4.4	60.80	79.20

BMK23 Dual Remote Adapter Parts

Purchase spin-on adapter separately by matching the AMSOIL Oil Filter. If you don't see your AMSOIL filter, use the Universal Single-Remote Bypass System (BMK21) instead.

Stock No.	Units	For Use With...	Wt. Lbs., ea.	Wholesale Cost, ea.	Min. Sugg. Retail, ea.
BK295	-EA	EaO15, EaO26, EaO34, EaO42, Ea15K51, Ea15K53	1.9	70.40	88.00
BK296	-EA	Ea15K32, EaO64	1.9	70.40	88.00
BK297	-EA	EaO23, Ea15K29	1.9	70.40	88.00
BK299	-EA	Ea15K50, EaO11, EaO17	1.9	70.40	88.00
BK300	-EA	EaO98	1.5	70.40	88.00
BK301	-EA	EaO99	2.8	70.40	88.00
BK302	-EA	EaO24, EaO52, EaO59	1.7	70.40	88.00
BK310	-EA	2008-present Chevrolet 1500 and 2500 gas engines not including 6.2L engines	1.9	70.40	88.00

Oil Analysis Options

AMSOIL offers oil analysis service options from Oil Analyzers Inc.® By analyzing used engine oil, a qualified lab can detect mechanical problems your equipment may have developed. For more information, visit www.oiltesting.com.

Stock No.	Units	Kit Description	Quantity	Cost, ea.	Min. Sugg. Retail, ea.
KIT401	-EA	OAI UPS Pre-Paid Kit	1	49.55	62.00
KIT402	-EA	OAI Non-Postage-Paid Kit	1	30.90	38.70

Oil Analysis Sample Collection Pump

Order a sample pump when ordering your sample kit. Makes drawing samples quick and easy. Comes with instructions and 10' of hose.

Stock No.	Units	Pkg/Size	Wholesale Cost, ea.	Cost Per Unit	Min. Sugg. Retail, ea.
G1206	-EA	(1) OAI Pump	33.15	-.-	36.50
G1571	-EA	25' of Sampling Hose	10.45	-.-	11.50



Additional bypass replacement parts are available. Visit www.amsoil.com to order.



Quickshot®

Effectively addresses performance issues related to ethanol, water and dirty pump gas in two- and four-stroke gasoline-powered engines and powersports equipment fuel systems, restoring peak performance. Designed for an initial clean-up dose of one bottle per 23 litres of gasoline, followed by one bottle per 45 litres thereafter.

Stock No.	Units	Pkg/Size	Wt. Lbs., ea.	Wholesale Cost, ea.	Cost Per Unit	Min. Sugg. Retail, ea.
AQSCNC	-EA	(1) 236-ml. Bottle†	0.6	9.80	-.-	12.95
AQSCNC	-CA	(6) 236-ml. Bottles†	3.6	55.80	9.30	77.10
AQSQT	-EA	(1) 946-ml. Bottle†	2.0	31.65	-.-	40.75
AQSQT	-CA	(12) 946-ml. Bottles†	24.0	361.20	30.10	487.80

P.i.™ Performance Improver Gasoline Additive

Maximizes fuel economy and reduces emissions in gasoline direct-injected and port-fuel-injected engines. Use entire bottle at fill-up.

Stock No.	Units	Pkg/Size	Wt. Lbs., ea.	Wholesale Cost, ea.	Cost Per Unit	Min. Sugg. Retail, ea.
CPICN	-EA	(1) 355-ml. Bottle†	0.9	12.85	-.-	16.95
CPICN	-CA	(12) 355-ml. Bottles†	10.8	146.40	12.20	202.20

Upper Cylinder Lubricant Gasoline Additive

Lubricates upper cylinders and fuel system and fights ethanol-related corrosion in cars and trucks. Helps keep injectors clean. Use entire bottle at every fill-up.

Stock No.	Units	Pkg/Size	Wt. Lbs., ea.	Wholesale Cost, ea.	Cost Per Unit	Min. Sugg. Retail, ea.
UCLCN	-EA	(1) 177-ml. Bottle†	0.5	4.65	-.-	6.25
UCLCN	-CA	(12) 177-ml. Bottles†	6.0	52.60	4.38	73.27

Gasoline Stabilizer

Helps prevent the formation of varnish and sludge in stored seasonal equipment such as snowmobiles, lawn-mowers, motorcycles and boats. 60 ml treats 19 litres of fuel.

Stock No.	Units	Pkg/Size	Wt. Lbs., ea.	Wholesale Cost, ea.	Cost Per Unit	Min. Sugg. Retail, ea.
ASTCNC	-EA	(1) 473-ml. Bottle†	1.1	12.45	-.-	16.50
ASTCNC	-CA	(6) 473-ml. Bottles†	6.6	71.10	11.85	98.40

Motorcycle Octane Boost

Increases octane in four-stroke air- or liquid-cooled motorcycles for maximum power and efficiency. Treats 15-23 litres of gasoline.

Stock No.	Units	Pkg/Size	Wt. Lbs., ea.	Wholesale Cost, ea.	Cost Per Unit	Min. Sugg. Retail, ea.
MOBCNC	-EA	(1) 118-ml. Bottle†	0.4	5.35	-.-	6.95
MOBCNC	-CA	(12) 118-ml. Bottles†	4.8	60.60	5.05	82.20

DOMINATOR® Octane Boost

Maximizes power and improves performance in all two-stroke and four-stroke gasoline engines. Treats up to 57 litres of gasoline.

Stock No.	Units	Pkg/Size	Wt. Lbs., ea.	Wholesale Cost, ea.	Cost Per Unit	Min. Sugg. Retail, ea.
COBBE	-EA	(1) 355-ml. Bottle†	0.8	10.45	-.-	13.55
COBBE	-CA	(6) 355-ml. Bottles†	4.8	59.70	9.95	80.70

Diesel Injector Clean

Removes performance-robbing deposits from diesel fuel injectors to restore horsepower and improve fuel economy up to 8 percent. Lubricates pump and injectors to reduce wear. 30 ml treats up to 18.93 L of fuel.

Stock No.	Units	Pkg/Size	Wt. Lbs., ea.	Wholesale Cost, ea.	Cost Per Unit	Min. Sugg. Retail, ea.
ADFCNC	-EA	(1) 473-ml. Bottle†	1.2	8.40	-.-	11.15
ADFCNC	-CA	(12) 473-ml. Bottles†	14.4	96.00	8.00	132.60
ADF05	-EA	18.9-Litre Pail†	40.2	229.90	-.-	305.85
ADF55	-EA	208-Litre Drum*†	447.0	2,285.50	-.-	2,811.20

Diesel Injector Clean + Cetane Boost

Combines the superior detergency and improved lubricity of Diesel Injector Clean and cetane of Cetane Boost in one convenient package. 30 ml treats up to 18.93 L of fuel.

Stock No.	Units	Pkg/Size	Wt. Lbs., ea.	Wholesale Cost, ea.	Cost Per Unit	Min. Sugg. Retail, ea.
ADSCNC	-EA	(1) 473-ml. Bottle†	1.2	13.20	-.-	17.45
ADSCNC	-CA	(12) 473-ml. Bottles†	14.4	150.60	12.55	208.20
ADS05	-EA	18.9-Litre Pail†	42.0	376.70	-.-	501.10
ADS55	-EA	208-Litre Drum*†	463.0	3,596.95	-.-	4,424.30

*Not stocked in all distribution centers. Call for availability.

†Product cannot be shipped air freight or parcel post.



Diesel All-In-One

Combines the superior detergency and improved lubricity of Diesel Injector Clean, the excellent cold-flow and anti-gelling properties of Diesel Cold Flow and the increased horsepower and cetane of Cetane Boost in one convenient package. 30 ml treats up to 9.46 L of fuel.

Stock No.	Units	Pkg/Size	Wt. Lbs., ea.	Wholesale Cost, ea.	Cost Per Unit	Min. Sugg. Retail, ea.
ADBCNC	-EA	(1) 473-ml. Bottle†	1.2	10.85	.-	14.35
ADBCNC	-CA	(12) 473-ml. Bottles†	14.4	123.60	10.30	171.00
ADB05	-EA	18.9-Litre Pail†	41.0	321.95	.-	428.25
ADB55	-EA	208-Litre Drum*†	452.0	3,298.55	.-	4,057.30



Diesel Recovery

Emergency diesel fuel treatment that dissolves the wax crystals that form when diesel fuel has surpassed its cloud point. 30 ml treats 3.79 L of fuel.

Stock No.	Units	Pkg/Size	Wt. Lbs., ea.	Wholesale Cost, ea.	Cost Per Unit	Min. Sugg. Retail, ea.
DRCQTC	-EA	(1) 887-ml. Bottle†	2.0	14.30	.-	18.50
DRCQTC	-CA	(12) 887-ml. Bottles†	24.0	163.20	13.60	220.80



Diesel Cetane Boost

Raises the cetane number of diesel fuel up to eight points for maximum horsepower, increased fuel economy and easier starts in all diesel engines. 30 ml treats up to 37.85 L of fuel.

Stock No.	Units	Pkg/Size	Wt. Lbs., ea.	Wholesale Cost, ea.	Cost Per Unit	Min. Sugg. Retail, ea.
CCBCN	-EA	(1) 473-ml. Bottle†	1.3	9.20	.-	12.20
CCBCN	-CA	(12) 473-ml. Bottles†	15.6	105.00	8.75	145.20
ACB05**	-EA	18.9-Litre Pail†	43.3	253.95	.-	337.80
ACB55**	-EA	208-Litre Drum*†	481.3	2,583.55	.-	3,177.80

**18.9-litre pails and 208-litre drums of Cetane Boost are filled to 98 percent of packaging capacity to allow for product expansion in warm temperatures.



MP Metal Protector

Displaces water and protects metal surfaces from rust and corrosion, including hinges, squeaky mechanical objects, electrical systems and more.

Stock No.	Units	Pkg/Size	Wt. Lbs., ea.	Wholesale Cost, ea.	Cost Per Unit	Min. Sugg. Retail, ea.
CMPSC	-EA	(1) 260-ml. Spray Can†	0.8	6.95	.-	9.05
CMPSC	-CA	(12) 260-ml. Spray Cans†	9.6	79.20	6.60	107.40



Synthetic Firearm Lubricant and Protectant

Effectively lubricates and protects guns, helping extend life and prevent blockage, jams and wear.

Stock No.	Units	Pkg/Size	Wt. Lbs., ea.	Wholesale Cost, ea.	Cost Per Unit	Min. Sugg. Retail, ea.
FLPBAC	-EA	(1) 118-ml. Bottle	0.4	9.80	.-	13.60
FLPBAC	-CA	(12) 118-ml. Bottles	4.8	111.60	9.30	162.00



Firearm Cleaner and Protectant

Penetrates deep into hard-to-reach components, effectively cleaning residue from all surfaces and safely protecting guns for storage.

Stock No.	Units	Pkg/Size	Wt. Lbs., ea.	Wholesale Cost, ea.	Cost Per Unit	Min. Sugg. Retail, ea.
FCPCN	-EA	(1) 236-ml. Bottle	0.8	11.15	.-	15.50
FCPCN	-CA	(12) 236-ml. Bottles	9.6	127.20	10.60	184.80



Engine and Transmission Flush

Helps restore operating efficiency, increase fuel economy and reduce emissions in gasoline and diesel engines and automatic transmissions.

Stock No.	Units	Pkg/Size	Wt. Lbs., ea.	Wholesale Cost, ea.	Cost Per Unit	Min. Sugg. Retail, ea.
FLSHCNC	-EA	(1) 473-ml. Bottle	1.2	11.35	.-	15.05
FLSHCNC	-CA	(12) 473-ml. Bottles	14.4	129.60	10.80	179.40
FLSH05	-EA	18.9-Litre Pail*	40.0	340.45	.-	452.90
FLSH55	-EA	208-Litre Drum*	442.0	3,391.20	.-	4,171.20

Propylene Glycol Antifreeze & Coolant

Combines the benefits of biodegradability, low toxicity and all-climate protection for up to 240,000 km or 5 years, whichever comes first, in passenger cars and light trucks. Protection up to 1,600,000 km, 20,000 hours or 8 years, whichever comes first, in heavy-duty applications. Concentrated formula.



Stock No.	Units	Pkg/Size	Wt. Lbs., ea.	Wholesale Cost, ea.	Cost Per Unit	Min. Sugg. Retail, ea.
ASTM D3306, D6210, D7583, D7820 • TMC RP329B, TMC RP338 • AS/NZS 2108.2004 Type A						
Suitable for use with: • Case New Holland • Cummins 14603 • Cummins 3666132 • DDC 7SE 298, 93K217 • Freightliner 48-22880						
ANT1G	-EA	(1) 3.78-Litre Bottle	9.8	37.40	-.-	48.70
ANT1G	-CA	(4) 3.78-Litre Bottles	39.2	142.40	35.60	193.20
ANT55	-EA	208-Litre Drum*	536.0	1,851.45	-.-	2,040.35

DOMINATOR® Coolant Boost

Helps reduce engine temperatures, increase horsepower, promote faster engine warm-up times and reduce radiator and engine corrosion in racing and passenger vehicles.



Stock No.	Units	Pkg/Size	Wt. Lbs., ea.	Wholesale Cost, ea.	Cost Per Unit	Min. Sugg. Retail, ea.
RDCBCN	-EA	(1) 473-ml. Bottle	1.1	12.70	-.-	16.75
RDCBCN	-CA	(6) 473-ml. Bottles	6.6	72.30	12.05	99.90

Multi-Vehicle Synthetic Power Steering Fluid

Provides excellent wear protection, long component life and quiet operation in most passenger car/light trucks.



Stock No.	Units	Pkg/Size	Wt. Lbs., ea.	Wholesale Cost, ea.	Cost Per Unit	Min. Sugg. Retail, ea.
American Motor Corporation C 4124 • BMW 82 11 0 148 132; 83 29 0 429 576; 81 22 1 468 879 & 82 11 1 468 041 • Chrysler MS-1872; MS-5931, MS-9602 & MS-11655 • Ford M2C138-CJ; ESW-M2C128-C&D; M2C195-A; M2C204-A & M2C33-F • GM/Saginaw PSF 9985010; 9985835 & 89021184 • Hyundai/Kia PSF-3; PSF-4 & PSF 00232-19017 • Mercedes-Benz 236.3; 345.0; 001 989 24 03 10; 001 989 24 03 12 & Q 1 32 0001 • Mitsubishi Diamond SP III & PS Fluid • Navistar TMS 6810 • Nissan PSF-II • Porsche 000 043 206 56 • Saab 93160548; (45) 30 09 800 & 30 32 380 • Subaru K0209A0080 • Toyota PSF Type EH; P/N 008886-01 • Volvo 1161529 & 30741424 • VW/Audi TL-52146; G002000; G 004 000 M2; G 004 000 M7 & G 004 000 M8						
PSFCNC	-EA	(1) 473-ml. Bottle	1.1	8.20	-.-	10.90
PSFCNC	-CA	(12) 473-ml. Bottles	13.2	93.60	7.80	129.60
PSF05	-EA	18.9-Litre Pail	38.0	222.95	-.-	296.60
PSF55	-EA	208-Litre Drum*	423.0	2,223.55	-.-	2,735.00

Filter Wrenches

Filter Wrench (64 mm)

Designed to install and remove AMSOIL Oil Filters in hard-to-reach locations, this easy-to-use 64-mm filter wrench has a combination 3/8" square drive and hex drive for easy installation and removal. Designed with extra thick wall construction to help withstand the higher torques required for the Toyota and Lexus oil filters. Recommended for use with the following filters: Ea15K01, Ea15K02, Ea15K04 and Ea15K49.



Stock No.	Units	Pkg/Size	Wt. Lbs., ea.	Wholesale Cost, ea.	Cost Per Unit	Min. Sugg. Retail, ea.
GA248	-EA	(1) 64-mm Filter Wrench	0.3	10.60	-.-	11.70

Filter Wrench (64 mm x 14 Flute)

Designed to install and remove AMSOIL Oil Filters and Motorcycle Oil Filters in hard-to-reach locations, this easy-to-use 64-mm filter wrench with 3/8" square drive is recommended for use with the following filters: EA15K09, EA15K10, EA15K12, EA15K13, EAO14, EAOM103, EAOM103C, EAOM109. Incompatible with Toyota and Lexus cartridge filter housings.



Stock No.	Units	Pkg/Size	Wt. Lbs., ea.	Wholesale Cost, ea.	Cost Per Unit	Min. Sugg. Retail, ea.
GA265	-EA	(1) 64-mm Filter Wrench	0.5	5.25	-.-	5.80

Filter Wrench (74 mm x 15 Flute)

Designed to install and remove AMSOIL Motorcycle Oil Filters in hard-to-reach locations, this easy-to-use 74-mm filter wrench with 3/8" square drive is recommended for use with the following filters: EAOM132, EAOM132C, EAOM133, EAOM133C, EAOM137C.



Stock No.	Units	Pkg/Size	Wt. Lbs., ea.	Wholesale Cost, ea.	Cost Per Unit	Min. Sugg. Retail, ea.
GA258	-EA	(1) 74-mm Filter Wrench	0.5	5.25	-.-	5.80

Filter Wrench (76 mm x 14 Flute)

Designed to install and remove AMSOIL Oil Filters and Motorcycle Oil Filters in hard-to-reach locations, this easy-to-use 76-mm filter wrench with 3/8" square drive is recommended for use with the following filters: EAO17, EAO18, EAO23, EA15K20, EA15K29, EA15K32, EAO34, EAO37, EAO38, EA15K50, EA15K51, EA15K53, EAO64, EAOM122, EAOM134, EAOM134C, EAOM135, EAOM135C, EAOM136C, EAOM138.



Stock No.	Units	Pkg/Size	Wt. Lbs., ea.	Wholesale Cost, ea.	Cost Per Unit	Min. Sugg. Retail, ea.
GA251	-EA	(1) 76-mm Filter Wrench	0.5	5.25	-.-	5.80



Filter Wrench (76mm x 15 Flute)

Designed to install and remove EA15K20 oil filters built prior to 2018. For EA15K20 filters built in or after 2018, use the filter wrench designated with product code GA251.

Stock No.	Units	Pkg/Size	Wt. Lbs., ea.	Wholesale Cost, ea.	Cost Per Unit	Min. Sugg. Retail, ea.
GA264	-EA	76-mm x 15 Filter Wrench	0.5	5.25	-.-	5.80



Filter Wrench (93 mm x 15 Flute)

Designed to install and remove AMSOIL Oil Filters in hard-to-reach locations, this easy-to-use 93-mm filter wrench with 3/8" square drive is recommended for use with the following filters: EAO11, EAO15, EAO21, EAO24, EAO26, EAO27, EAO31, EAO40, EAO42, EAO52, EAO59, EAO80, EAO98.

Stock No.	Units	Pkg/Size	Wt. Lbs., ea.	Wholesale Cost, ea.	Cost Per Unit	Min. Sugg. Retail, ea.
GA252	-EA	(1) 93-mm Filter Wrench	0.5	5.25	-.-	5.80

Oil Fill Hand Pump

Specially designed to fit AMSOIL quart and gallon bottles. Guarantees efficient, quick dispensing of AMSOIL gear oils, transmission fluids and any oil that may need to be pumped. Great for fluid fills in differentials, transmissions, transaxles, boat lower units and boat stern drives.

Stock No.	Units	Pkg/Size	Wt. Lbs., ea.	Wholesale Cost, ea.	Cost Per Unit	Min. Sugg. Retail, ea.
G2039	-EA	(1) Hand Pump	0.7	13.20	-.-	14.55

Marine Gear Lube Pump

Eases installation and reduces mess when servicing lower units with quarts of AMSOIL Synthetic Marine Gear Lube.

Stock No.	Units	Pkg/Size	Wt. Lbs., ea.	Wholesale Cost, ea.	Cost Per Unit	Min. Sugg. Retail, ea.
G3456	-EA	(1) Hand Pump	0.3	12.75	-.-	14.05

Fluid Extraction Pump

Aids in the removal of old fluids when servicing vehicles.

Stock No.	Units	Pkg/Size	Wt. Lbs., ea.	Wholesale Cost, ea.	Cost Per Unit	Min. Sugg. Retail, ea.
G2576	-EA	(1) Fluid Extraction Pump	2.0	19.95	-.-	21.95



Sales Tax Information

AMSOIL INC. is registered to collect sales tax in each province and most local jurisdictions where applicable. AMSOIL is responsible for collecting and remitting sales tax to the appropriate taxing jurisdiction for all AMSOIL Dealers and accounts.

Tax Rate Determination

Sales tax rates are set in the following manner:

1. If you pick up your order at an AMSOIL distribution center, you will be charged the applicable sales tax at that point of sale. This is the prevailing tax rate at that distribution center.
2. If you have the order shipped, sales tax will be charged at the rate applicable to the ship-to address.

Exemption Certificates

If you prefer to pay provincial sales tax directly to your provincial revenue department rather than have it collected by AMSOIL at the time of purchase, contact your province for registration information.

It is important that you are aware that under the terms of provincial registrations, you will be exempt only in those provinces in which you have a valid registration. It is the responsibility of AMSOIL INC. to collect PST on all sales unless the products are exempt or the ultimate purchaser provides a valid exemption certificate. When placing an order that will be picked up or delivered to a province other than where the purchaser's registration resides, PST must be collected or a valid exemption certificate for that customer must be obtained and provided to AMSOIL INC.

Sales Tax Table as of Jan. 1, 2020

The following sales taxes are collected by AMSOIL on purchases made by Dealers and accounts in these provinces. Apply these tax rates to the suggested retail total (for Dealers) on your order, along with freight & handling. All other customer types will be charged GST based on their purchase price.

Province	HST	PST	GST	Combined Rate
British Columbia	n/a	7%	5%	12%
Newfoundland	15%	n/a	n/a	15%
Prince Edward Island	15%	n/a	n/a	15%
Manitoba	12%	n/a	n/a	12%
Nova Scotia	15%	n/a	n/a	15%
Quebec	n/a	9.975%	5%	14.975%
New Brunswick	15%	n/a	n/a	15%
Ontario	13%	n/a	n/a	13%
Saskatchewan	n/a	6%	5%	11%
Alberta	n/a	n/a	5%	5%

Tax Rate Differences

If you have been charged an incorrect tax rate on your order, contact AMSOIL at:

**AMSOIL INC .
Att: Sales Tax Dept.
925 Tower Ave.
Superior, WI 54880
(715) 392-7101**

Please allow time for processing this rate change. Tax rate changes will be verified via a written notice from AMSOIL INC.

To recover or remit sales tax differences when you resell product in a different rate area, take the following steps:

1. Obtain a Sales Tax Refund Claim Form (G20) from AMSOIL INC., which is available in your Account Zone at www.amsoil.com or can be

emailed or faxed upon request. Remit the completed and signed form along with the sales receipt copies of the different rate transactions.

2. Alternatively, you can deduct unrecovered portions of sales tax on your Federal Income Tax return on Schedule C.

Canada Environmental Handling Charge

AMSOIL INC is funding the provincial recycling programs as the brand owner.

Freight and Handling Information

You may order products shipped freight collect OR pre-pay the actual freight costs. A freight schedule is included on your account-specific ordering information sheet (Dealer: G8604; Retail: G8603; Commercial: G8602) to help estimate freight costs. View them in your Account Zone.

Third-party billing is allowed. When third-party billing is requested, the CARRIER account number of the third party must be supplied at the time of order placement. Parcel Post shipments to military P.O. Boxes will be charged actual freight charges and cannot be shipped freight collect.

Additional Delivery Fees

Carriers may charge an additional fee for delivery to a residence. The consignee pays any ADDITIONAL freight charges in these situations. Allow up to 2-3 days more for rural delivery. Some LTL carriers charge a fee when customers request a call before delivery or lift gate service. The consignee pays for this additional service.

Pick-Up Orders

It is advisable to call the AMSOIL distribution center before travelling to pick up product. All orders scheduled for "Pick-Up" **must be picked up within 5 days of the date of the order.** This can also be pre-arranged with the distribution center manager. **Orders that are not picked up within the time-frame will be cancelled.**

Routing

You may include specific routing instructions with your order. However, because the pre-paid freight schedule is based on using the most economical method of transportation, the final decision on routing pre-paid freight orders rests with the AMSOIL Distribution Center Manager. If you need a specific routing guarantee, specify that your order be shipped "Freight Collect." UPS and Parcel Post shipments cannot be shipped Freight Collect. AMSOIL recommends searching for the best rates to your location and specifying Freight Collect for larger shipments.

Please contact your nearest AMSOIL distribution center for details when requesting air freight, expedited freight, LTL services or Saturday deliveries. Actual freight charges will apply in these situations, so be sure to ask for estimated delivery times via each shipping method and estimated costs to make your best routing decisions.

Expediting and Tracing

If you have not received your order in 5 to 7 days, contact the AMSOIL distribution center from which your order was shipped. Be prepared to furnish the following information:

1. Order date
 2. Purchaser's name and account number
 3. Order number (if known)
 4. To whom the product was shipped with an address
- AMSOIL INC. will notify you of the method of shipment, date of shipment, present location and, if available, tracking number as soon as possible.

Shortages

On shipments with shortages, please note the number of pieces short on the delivery receipt and sign it. Then call the delivering carrier's office and report your shortage. If these efforts fail to complete your shipment within 10 days of receipt, contact your AMSOIL distribution center and request assistance.

Overages

On shipments with overages, please note the number of extra pieces on

the delivery receipt and sign it. Then, contact your AMSOIL distribution center to make further arrangements.

Limited Distribution

Not every distribution center carries a complete inventory of the products listed in this price list. When there is a substantial repeat order for a product not carried by your distribution center, please discuss it with the Distribution Center Manager.

Claims and Damaged Shipments

Claims must be made within 7 days from the time of receipt.

Items Picked Up at a Distribution Center

If you pick up an order at any distribution center and discover concealed damage when the product is opened, return the damaged product to the same distribution center for exchange at your convenience. Your copy of the invoice or packing slip should accompany such an exchange. The exchange can only be made for the same products.

AMSOIL DISTRIBUTION CENTERS	
Location	Phone and Fax
Toronto, Ontario 6625 Tomken Road Units 12-14 Mississauga, ON L5T2C2	Phone: 877-822-5172 Fax: 905-564-0028
Edmonton, Alberta 14328-121A Avenue. Edmonton, AB T5L 2T2	Phone: 877-830-4769 Fax: 780-454-5883
Hours	Monday 9 a.m. - 7 p.m. Tuesday - Friday 9 a.m. - 5:30 p.m. Saturday, Sunday and Statutory Holidays Closed

Small Parcel Shipments

Please inspect the shipment before signing for delivery. When there is visible damage, refuse to accept delivery. CARRIER will return the damaged goods to the AMSOIL distribution center and the distribution center will re-ship your order. If CARRIER delivers a package without a signature and you discover damaged goods inside, contact your local CARRIER office and refuse the shipment due to damage. When there is concealed damage discovered after you accept delivery, contact the AMSOIL distribution center for instructions immediately. Orders weighing less than 250 lbs. and shipping to a minority of outlying areas are subject to additional interline freight fees. Interline fees are not applied to orders weighing 250 lbs. or more. For details, visit www.amsoil.com/store/InterlineFeeLookup.

Other Shipments (LTL or Common Carrier)

1. When damaged goods are received, have the driver make note of the damage on the delivery receipt **before you sign it**.
2. Contact AMSOIL INC. or your local distribution center to have the claim started with the carrier.
3. Damage claims must be filed within 7 days. The sooner you file, the better.
4. Unlike CARRIER shipments, you should never refuse a damaged shipment when the products are delivered via a commercial carrier (truck lines). To do so will cost you freight both ways.

Note: It is the responsibility of the consignee to file all claims for damaged shipments that are sent freight collect.

Re-Delivery Charges

If a freight carrier is unsuccessful when attempting to deliver to a "ship-to" address, a re-delivery charge may be necessary. This will be charged to the purchaser.

Lift Gate Service (LTL or Common Carriers)

Customers can request lift gate service at the time of ordering if they do not have a method of unloading large orders, 30- and 55-gallon drums or totes. Not all carriers offer this service, so when requesting it please allow

additional time for delivery. AMSOIL charges customers and accounts a flat rate of \$30 for all lift-gate-required deliveries. Customers will be prompted to accept or decline lift gate service on all qualifying orders placed online or over the telephone.

Call Before Delivery Requests (LTL or Common Carriers)

At the time of order, customers can request to be contacted prior to delivery. A **daytime** phone number must be provided, with instructions to call before delivery. The carrier will contact the customer prior to delivery to set up a delivery time. If this service is requested, the consignee pays all costs for the additional service and will be charged the actual cost. Because these costs can vary depending upon the carrier used, it is recommended to contact the AMSOIL distribution center from which the order will be shipped prior to placing the order to obtain these costs. **ANY OTHER REQUESTS FOR SPECIAL SERVICES WILL BE CHARGED TO THE CONSIGNEE AT ACTUAL COSTS.**

Backorders and Invoices

Some orders may require multiple shipments due to products placed on backorder status. Backordered items will be shipped separately. This is also true for items that are not stocked at all distribution centers. These items may also be shipped from an alternate distribution center.

In such situations, each shipment will receive a separate invoice and credit card charge. Credit cards will not be charged until items ship. Although separate invoices are issued, totals for freight charges, taxes and discounts are calculated based upon the whole order.

Backorders receive priority status and will be shipped as soon as they become available. When items on an order are in backorder status and the order is to be picked up at a distribution center, the backordered items can be shipped to a destination of your choosing at the actual freight charge. Questions regarding the status of backordered items should be directed to the appropriate AMSOIL Distribution Center Manager. **Backorders will be shipped to the "ship-to" address on all orders.**

Amsoil Dealer John Cardell #1254295

Online Orders:

<https://amsoilstore.syntheticmotoroil.org>

Site: <https://syntheticmotoroil.org>

Phone Orders: 1-800-777-7094

Ordering Hours: Mon-Fri 7AM-7PM CST

My Cell: 702.994.4646

All trademarks appearing in this document remain property of their respective holders and use herein in no way indicates any relationship between AMSOIL INC. and the holders of said trademarks.

Acura®	Denison®	Hilliard®	Lineartronic®	Power Guard®	TrueFlow®
AFE®	Detroit Diesel®	Hino®	Mack®	Power Stroke®	Twin Cam®
AlRAID®	dexos1™	Honda®	MAN®	Priority Mail Flat Rate™	UPS®
Allison®	dexos2™	Honda DW-1®	MANN+HUMMEL®	Renault®	USPS®
Aprilia®	DEXRON®	Hummer®	Marine Power®	Royal Enfield®	Vickers®
ATF+4®	Dodge®	Husqvarna®	Mazda®	S&B®	Victory®
Audi®	Donaldson®	Hyundai®	Mercedes-Benz®	SSR Ultra Coolant™	Voith®
BMW®	Ducati®	Idemitsu®	MERCON®	Saab®	Volkswagen®
Briggs & Stratton®	Duramax®	Indian®	Mercury®	Scania®	Volvo®
Buell®	Eaton®	Infiniti®	Milacron®	Sea-Doo®	Volvo-Penta®
Case New Holland®	E-TEC®	Ingersoll-Rand®	Mitsubishi®	Shell®	Vortec®
Castrol®	Evinrude®	Injen®	Mobil®	Subaru®	WIX®
CAT®	Exact Fit®	John Deere®	MOPAR®	Sullair®	Yamaha®
Caterpillar®	FEDEX®	Johnson-Evinrude®	Motorcraft®	Sullube™	Zetor®
Chrysler®	Ford®	K&N®	NeoForm®	Suzuki®	ZF®
Chrysler ATF+4®	Freightliner®	Kawasaki®	New Venture®	Texaco®	
Crusader®	Gear Vendors®	Kia®	Nissan®	Tohatsu®	
Cummins®	GM®	Komatsu®	OMC®	Toyota®	
CVTF+4®	Green®	KTM®	Polaris®	Transynd®	
Daimler-Benz®	GT-R®	Land Rover®	Porsche®	Tremec®	
Dana®	Harley-Davidson®	Lexus®	PowerCore®	Triumph®	

NOTES

