



Career and College Promise

**CCP Handbook
2018-2019**

Earn **Tuition FREE**
College while in
High School



Gaston College
Opportunities For Life

www.gaston.edu

Career and College Promise (CCP) Handbook 2018-2019

General Information	2
College Readiness Benchmarks	4
Pathways	4
College Transfer Pathway Sequences	5
Career and Technical Pathway Sequences	11
Program Costs	19
Tuition	19
Instructional Fees	19
Textbooks & Textbook Access Codes	19
Student Policies	19
Dropping a Course	19
CCP Student Withdrawal Process	19
Instructor Withdrawal Process	19
WI Grade	19
WA Grade	20
FERPA	20
Additional Gaston College Policies	20
Gaston College Courses Prefixes and Locations	20
Face-to-Face Course Sections	20
Career and College Promise Course Sections	20
Hybrid Course Sections	20
Online Sections	20
Career and College Promise Course Offerings at High School Locations	21
CCP Course Offerings at High School Locations – Fall 2018	21
CCP Course Offerings at High School Locations – Spring 2019	22
Career and College Promise Course Offerings at Gaston College Campuses	23
CCP Course Offerings at Gaston College Campuses – Fall 2018	23
CCP Course Offerings at Gaston College Campuses – Spring 2019	24
Log In Information	25
WebAdvisor	25
Logging Into WebAdvisor	25
Gaston College Student ID Number	25
GC Password Management	25
Blackboard	25
Student Email	25
Computer Lab Login	26
Printing/Wi-Fi Login	26
Student Resources	27
Disability Services	27
The Gaston College Learning Center (GCLC)	26
The Gaston College Libraries	27
The Gaston College Writing Center	27
Additional Student Resources	26
GC Promise	28
Pre-Apprenticeship 321	29
Contact Information	30
Notes	31

Career and College Promise (CCP) General Information

Career and College Promise (CCP) provides qualified North Carolina **high school juniors and seniors** with the opportunity to dually enroll in community college courses **tuition-free**. CCP is very prescriptive, providing focused pathways that lead to a certificate, diploma, degree, or State or industry-recognized credential as well as provide entry-level job skills.

Gaston College provides qualifying students with the opportunity to enroll in the following pathways:

1. College Transfer Pathways
2. Career and Technical Education Pathways
3. Workforce Continuing Education Pathway
4. Cooperative Innovative High School Program (Gaston Early College High School)

College Transfer Pathways

College Transfer Pathways provide eligible students with the opportunity to earn tuition-free credit toward one of five transfer associate degrees and a bachelor's degree. Each pathway consists of a minimum of 24 or 32 credit hours toward the Universal General Education Transfer Component (UGETC) courses outlined in the North Carolina Comprehensive Articulation Agreement (CAA) http://www.nccommunitycolleges.edu/sites/default/files/basic-pages/academic-programs/attachments/transfer_course_list_appendix_g2016v4.pdf. The courses are guaranteed to transfer for general education equivalency credit to any of the 16 UNC System universities if students earn a grade of "C" or better in the course(s). College Transfer Pathways are outlined on page 5.

- To be eligible for enrollment, a high school student must meet the following criteria:
 - a. Be a high school junior or senior.
 - b. Have a minimum weighted GPA of 3.0 on high school courses.
 - c. Demonstrate college readiness in English, reading, and mathematics on an approved assessment or placement test (see page 4).
- To maintain eligibility for continued enrollment, a student must:
 - a. Continue to make progress toward high school graduation.
 - b. Maintain a 2.0 GPA in college coursework after completing two courses.
(NOTE: Students who fall below a 2.0 will be subject to Gaston College's Academic Alert Policy.)
- **A student may only enroll in one College Transfer Pathway and may not substitute courses in one program for another.**

Career and Technical Education Pathways

Career and Technical Education (CTE) Pathways provide eligible students with the opportunity to earn tuition-free credit towards an entry level job credential, certificate, or diploma aligned with a high school Career-Cluster. Students are exposed to a variety of high-skill career options. CTE Pathways are outlined on page 11.

- To be eligible for enrollment, a high school student must meet the following criteria:
 - a. Be a high school junior or senior.
 - b. Have a weighted GPA of 3.0 or higher on high school courses, **OR** have the recommendation of the high school principal or his/her designee.
 - c. Have received career pathway information outlining program requirements for completion of certificate or diploma.
- Gaston College Career and Technical Education courses may be used to provide partial or full fulfillment of a four-unit career cluster. Where possible, students should be granted articulated credit based on local or state North Carolina High School to Community College Articulation Agreement (<http://www.ncperkins.org/course/view.php?id=4>)
- To maintain eligibility for continued enrollment, a student must:
 - a. Continue to make progress toward high school graduation.
 - b. Maintain a 2.0 GPA in college coursework after completing two courses.
(NOTE: Students who fall below a 2.0 will be subject to Gaston College's Academic Alert Policy.)
- **A student may only enroll in one pathway and may not substitute courses in one program for courses in another.**

Multiple CCP Pathways

With the approval of the high school principal or his/her designee and the college's chief student development administrator, a student may concurrently enroll in:

- One College Transfer Pathway and one Career Technical Education Pathway;
- One College Transfer Pathway and one Workforce and Continuing Education Pathway;
- Two Career Technical Pathways;
- One Career Technical Education Pathway and one Workforce Continuing Education Pathway.

Change of Pathway Requirements

A student may change his/her pathway major with approval of the high school principal or his/her designee and the College's chief academic officer. The College's chief academic officer shall approve a change in pathway based on verification provided by the student that the program change allows the student to meet his/her newly chosen career path. Verification could include (but is not limited to):

- A bachelor degree plan published by the university (transfer pathway changes only)
- A career pathway plan
- Career information published in the Occupational Outlook Handbook
- Information published in the North Carolina Career-Cluster Guide, etc



College Readiness Benchmarks

College Readiness* Benchmarks on Approved Diagnostic Assessment Tests (College Placement Testing)

- Eligibility must be met using scores for all three required components
- Placement scores are required for most college level courses

SAT				
March 2016 & Earlier			March 2016 & Future	
English	Critical Reading	Math	Evidence-Based Reading/Writing	Math
500	500	500	480	530

PSAT***					
2014 & Earlier			2015 & Future		
English	Reading	Math	English	Reading	Math
45	47	47	26	26	24.5 (or 510)
			<i>(composite score of 460 for Evidenced-Based Reading/Writing)</i>		

PLAN**		
English	Reading	Math
15	18	19

Pre-ACT			ACT		
English	Reading	Math	English	Reading	Math
18	22	22	18	22	22

	English	Reading	Math
ACCUPLACER***	86 Sentence Skills	80	55 Arithmetic 74 Elem. Algebra
ASSEST***	41 Writing	41	41 Numerical Skills 41 Int. Algebra
COMPASS***	70 Writing	81	74 Pre-Algebra 66 Algebra
NC DAP***	151 or higher (both English and Reading)		7 or higher (DMA 010 thru 060)

*To be eligible for enrollment in the College Transfer Pathway, students must demonstrate college readiness in English, reading, and mathematics on an approved test.

**PLAN and PSAT scores recommended by ACT and College Board as indicators of college readiness.

***ACCUPLACER, ASSEST, COMPASS, and NC DAP scores are based on NCCCS Cut Scores.



College Transfer Pathway Sequences

College Transfer Pathways lead to a minimum of 24 or 32 semester hours of college transfer credit toward one of five college transfer degrees. The courses within each pathway are selected based on their transferability to any college or university within the UNC System. **Additionally, these courses will receive the same weighted credit as Advanced Placement (AP) courses for juniors effective Fall 2017.**

- All college transfer pathways require college readiness on approved assessment or placement test (see page 4).
- Contact hours (**CH**) and Semester Hours of Credit (**SHC**) are listed for each course in the pathway.

For the purpose of calculating student high school Grade Point Averages, courses are weighted in accordance with SBE policy GCS-L-004.

Associate Degree Nursing (ADN) (P1032C)			
The following two English courses are required (6 SHC):			
ENG 111	Writing and Inquiry	3 CH	3 SHC
ENG 112	Writing/Research in the Disciplines	3 CH	3 SHC
Select one course from the following (3 SHC):			
ART 111	Art Appreciation	3 CH	3 SHC
ART 114	Art History Survey I	3 CH	3 SHC
ART 115	Art History Survey II	3 CH	3 SHC
MUS 110	Music Appreciation	3 CH	3 SHC
MUS 112	Introduction to Jazz	3 CH	3 SHC
PHI 215	Philosophical Issues	3 CH	3 SHC
PHI 240	Introduction to Ethics	3 CH	3 SHC
The following courses are required (14 SHC):			
PSY 150	General Psychology	3 CH	3 SHC
PSY 241	Developmental Psychology	3 CH	3 SHC
BIO 168	Anatomy and Physiology I	6 CH	4 SHC
BIO 169	Anatomy and Physiology II	6 CH	4 SHC
Other required hours (1 SHC):			
ACA 122	College Transfer Success	1 CH	1 SHC
<p>Optional general education hours: A student may take up to 8 semester hours of credit of foreign language courses and accompanying labs, in a single language, designated as General Education in the CAA as a part of this pathway. These courses are not part of the UGETC. Students who complete these courses with a "C" or better will receive transfer credit. The receiving university will determine whether these courses will count as general education, pre-major, or elective credit.</p>			

TOTAL Semester Hours of Credit: 24

Estimated Fees for Pathway (not including textbooks): \$200.00

Students who wish to apply for the Nursing program after completing the CCP ADN pathway must have a clear criminal background. Students will be instructed as to how to complete this step once they are accepted into the Nursing program.

Associate in Arts (P1012C)

The following two English courses are required (6 SHC):

ENG 111	Writing and Inquiry	3 CH	3 SHC
ENG 112	Writing/Research in the Disciplines	3 CH	3 SHC

Select three courses from the following from two different disciplines (9 SHC):

ART 111	Art Appreciation	3 CH	3 SHC
ART 114	Art History Survey I	3 CH	3 SHC
ART 115	Art History Survey II	3 CH	3 SHC
COM 231	Public Speaking	3 CH	3 SHC
ENG 231	American Literature I	3 CH	3 SHC
ENG 232	American Literature II	3 CH	3 SHC
ENG 241	British Literature I	3 CH	3 SHC
ENG 242	British Literature II	3 CH	3 SHC
MUS 110	Music Appreciation	3 CH	3 SHC
MUS 112	Introduction to Jazz	3 CH	3 SHC
PHI 215	Philosophical Issues	3 CH	3 SHC
PHI 240	Introduction to Ethics	3 CH	3 SHC

Select three courses from the following from two different disciplines (9 SHC):

ECO 251	Principles of Microeconomics	3 CH	3 SHC
ECO 252	Principles of Macroeconomics	3 CH	3 SHC
HIS 111	World Civilizations I	3 CH	3 SHC
HIS 112	World Civilizations II	3 CH	3 SHC
HIS 131	American History I	3 CH	3 SHC
HIS 132	American History II	3 CH	3 SHC
POL 120	American Government	3 CH	3 SHC
PSY 150	General Psychology	3 CH	3 SHC
SOC 210	Introduction to Sociology	3 CH	3 SHC

Select one course from the following (3-4 SHC):

MAT 143	Quantitative Literacy	4 CH	3 SHC
MAT 152	Statistical Methods I	5 CH	4 SHC
MAT 171	Precalculus Algebra	5 CH	4 SHC

Select one course from the following (4 SHC):

BIO 110	Principles of Biology	6 CH	4 SHC
BIO 111	General Biology I	6 CH	4 SHC
CHM 151	General Chemistry I	6 CH	4 SHC
GEL 111	Introductory Geology	5 CH	4 SHC
PHY 110	Conceptual Physics AND	3 CH	3 SHC
PHY 110A	Conceptual Physics Lab	2 CH	1 SHC

Other required hours (1 SHC):

ACA 122	College Transfer Success	1 CH	1 SHC
---------	--------------------------	------	-------

Optional general education hours: A student may take up to 8 semester hours of credit of foreign language courses and accompanying labs, in a single language, designated as General Education in the CAA as a part of this pathway. These courses are not part of the UGETC. Students who complete these courses with a "C" or better will receive transfer credit. The receiving university will determine whether these courses will count as general education, pre-major, or elective credit.

TOTAL Semester Hours of Credit: 32-41

Estimated Fees for Pathway (not including textbooks): \$215.00

Associate in Engineering (P1052C)

The following two English courses are required (6 SHC):

ENG 111	Writing and Inquiry	3 CH	3 SHC
ENG 112	Writing/Research in the Disciplines	3 CH	3 SHC

Select one course from the following (3 SHC):

ART 111	Art Appreciation	3 CH	3 SHC
ART 114	Art History Survey I	3 CH	3 SHC
ART 115	Art History Survey II	3 CH	3 SHC
COM 231	Public Speaking	3 CH	3 SHC
ENG 231	American Literature I	3 CH	3 SHC
ENG 232	American Literature II	3 CH	3 SHC
ENG 241	British Literature I	3 CH	3 SHC
ENG 242	British Literature II	3 CH	3 SHC
MUS 110	Music Appreciation	3 CH	3 SHC
MUS 112	Introduction to Jazz	3 CH	3 SHC
PHI 215	Philosophical Issues	3 CH	3 SHC
PHI 240	Introduction to Ethics	3 CH	3 SHC

The following course is required (3 SHC):

ECO 251	Principles of Microeconomics	3 CH	3 SHC
---------	------------------------------	------	-------

The following courses are required (5 SHC):

DFT 170	Engineering Graphics	4 CH	3 SHC
EGR 150	Introduction to Engineering	3 CH	2 SHC

Students may take the following courses to meet the prerequisite for MAT 271 (8 SHC):

MAT 171	Precalculus Algebra	5 CH	4 SHC
MAT 172	Precalculus Trigonometry	5 CH	4 SHC

The following courses are required (8 SHC):

MAT 271	Calculus I	5 CH	4 SHC
MAT 272	Calculus II	5 CH	4 SHC

Select two courses from the following (8 SHC):

CHM 151	General Chemistry I	6 CH	4 SHC
PHY 251	General Physics I	6 CH	4 SHC
PHY 252	General Physics II	6 CH	4 SHC

Other required hours (1 SHC):

ACA 122	College Transfer Success	1 CH	1 SHC
---------	--------------------------	------	-------

Optional general education hours: A student may take up to 8 semester hours of credit of foreign language courses and accompanying labs, in a single language, designated as General Education in the CAA as a part of this pathway. These courses are not part of the UGETC. Students who complete these courses with a "C" or better will receive transfer credit. The receiving university will determine whether these courses will count as general education, pre-major, or elective credit

TOTAL Semester Hours of Credit: 34-50

Estimated Fees for Pathway (not including textbooks): \$275.00

Associate in Fine Arts – Visual Arts (P1062C)

The following two English courses are required (6 SHC):

ENG 111	Writing and Inquiry	3 CH	3 SHC
ENG 112	Writing/Research in the Disciplines	3 CH	3 SHC

Select two courses from the following from two different disciplines (6 SHC):

ART 111	Art Appreciation	3 CH	3 SHC
COM 231	Public Speaking	3 CH	3 SHC
ENG 231	American Literature I	3 CH	3 SHC
ENG 232	American Literature II	3 CH	3 SHC
ENG 241	British Literature I	3 CH	3 SHC
ENG 242	British Literature II	3 CH	3 SHC
MUS 110	Music Appreciation	3 CH	3 SHC
MUS 112	Introduction to Jazz	3 CH	3 SHC
PHI 215	Philosophical Issues	3 CH	3 SHC
PHI 240	Introduction to Ethics	3 CH	3 SHC

Select two courses from the following from two different disciplines (6 SHC):

ECO 251	Principles of Microeconomics	3 CH	3 SHC
ECO 252	Principles of Macroeconomics	3 CH	3 SHC
HIS 111	World Civilizations I	3 CH	3 SHC
HIS 112	World Civilizations II	3 CH	3 SHC
HIS 131	American History I	3 CH	3 SHC
HIS 132	American History II	3 CH	3 SHC
POL 120	American Government	3 CH	3 SHC
PSY 150	General Psychology	3 CH	3 SHC
SOC 210	Introduction to Sociology	3 CH	3 SHC

Select one course from the following (3-4 SHC):

MAT 143	Quantitative Literacy	4 CH	3 SHC
MAT 152	Statistical Methods I	5 CH	4 SHC
MAT 171	Precalculus Algebra	5 CH	4 SHC
MAT 271	Calculus I	5 CH	4 SHC
MAT 272	Calculus II	5 CH	4 SHC

Select one course from the following (4 SHC):

BIO 110	Principles of Biology	6 CH	4 SHC
BIO 111	General Biology I	6 CH	4 SHC
CHM 151	General Chemistry I	6 CH	4 SHC
GEL 111	Introductory Geology	5 CH	4 SHC
PHY 110	Conceptual Physics AND	3 CH	3 SHC
PHY 110A	Conceptual Physics Lab	2 CH	1 SHC

The following courses are required (7 SHC):

ART 121	Two-Dimensional Design	6 CH	3 SHC
ART 131	Drawing I	6 CH	3 SHC
ACA 122	College Transfer Success	1 CH	1 SHC

Optional general education hours: A student may take up to 8 semester hours of credit of foreign language courses and accompanying labs, in a single language, designated as General Education in the CAA as a part of this pathway. These courses are not part of the UGETC. Students who complete these courses with a "C" or better will receive transfer credit. The receiving university will determine whether these courses will count as general education, pre-major, or elective credit.

TOTAL Semester Hours of Credit: 32-41

Estimated Fees for Pathway (not including textbooks): \$215.00

Associate in Science (P1042C)

The following two English courses are required (6 SHC):

ENG 111	Writing and Inquiry	3 CH	3 SHC
ENG 112	Writing/Research in the Disciplines	3 CH	3 SHC

Select two courses from the following from two different disciplines (6 SHC):

ART 111	Art Appreciation	3 CH	3 SHC
ART 114	Art History Survey I	3 CH	3 SHC
ART 115	Art History Survey II	3 CH	3 SHC
COM 231	Public Speaking	3 CH	3 SHC
ENG 231	American Literature I	3 CH	3 SHC
ENG 232	American Literature II	3 CH	3 SHC
ENG 241	British Literature I	3 CH	3 SHC
ENG 242	British Literature II	3 CH	3 SHC
MUS 110	Music Appreciation	3 CH	3 SHC
MUS 112	Introduction to Jazz	3 CH	3 SHC
PHI 215	Philosophical Issues	3 CH	3 SHC
PHI 240	Introduction to Ethics	3 CH	3 SHC

Select two courses from the following from two different disciplines (6 SHC):

ECO 251	Principles of Microeconomics	3 CH	3 SHC
ECO 252	Principles of Macroeconomics	3 CH	3 SHC
HIS 111	World Civilizations I	3 CH	3 SHC
HIS 112	World Civilizations II	3 CH	3 SHC
HIS 131	American History I	3 CH	3 SHC
HIS 132	American History II	3 CH	3 SHC
POL 120	American Government	3 CH	3 SHC
PSY 150	General Psychology	3 CH	3 SHC
SOC 210	Introduction to Sociology	3 CH	3 SHC

Select two courses from the following (8 SHC):

MAT 171	Precalculus Algebra	5 CH	4 SHC
MAT 172	Precalculus Trigonometry	5 CH	4 SHC
MAT 263	Brief Calculus	5 CH	4 SHC
MAT 271	Calculus I	5 CH	4 SHC
MAT 272	Calculus II	5 CH	4 SHC

Select two courses from the following (8 SHC):

BIO 110	Principles of Biology	6 CH	4 SHC
BIO 111	General Biology I AND	6 CH	4 SHC
BIO 112	General Biology II	6 CH	4 SHC
CHM 151	General Chemistry I AND	6 CH	4 SHC
CHM 152	General Chemistry II	6 CH	4 SHC
GEL 111	Introductory Geology	5 CH	4 SHC
PHY 110	Conceptual Physics AND	3 CH	3 SHC
PHY 110A	Conceptual Physics Lab	2 CH	1 SHC
PHY 151	College Physics I AND	5 CH	4 SHC
PHY 152	College Physics II	5 CH	4 SHC
PHY 251	General Physics I AND	3 CH	4 SHC
PHY 252	General Physics II	3 CH	4 SHC

Other required hours (1 SHC):

ACA 122	College Transfer Success	1 CH	1 SHC
---------	--------------------------	------	-------

Optional general education hours: A student may take up to 8 semester hours of credit of foreign language courses and accompanying labs, in a single language, designated as General Education in the CAA as a part of this pathway. These courses are not part of the UGETC. Students who complete these courses with a "C" or better will receive transfer credit. The receiving university will determine whether these courses will count as general education, pre-major, or elective credit.

TOTAL Semester Hours of Credit: 35-43

Estimated Fees for Pathway (not including textbooks): \$275.00



Career and Technical Education Pathway Sequences

Career and Technical Education Pathways lead to a certificate, diploma, or degree.

- (T) Denotes the course is listed on the North Carolina Comprehensive Articulation Agreement (CAA) between North Carolina Community Colleges and the UNC University System, and courses will receive honors credit on the high school transcript.
- (T*) Denotes the course is listed within the CAA as a UGETC course and will receive the same weighted credit as Advanced Placement (AP) courses for juniors effected Fall 2017.
- A course highlighted in **blue** is recognized within the High School and North Carolina Community College Articulation Agreement.
- Contact Hours (CH) and Semester Hours of Credit (SHC) are listed for each course in the pathway.
- A pre-requisite is a course that must be taken before another course. Pre-requisite(s) are listed next to course title(s).
- Students are not required to follow the exact sequences as long as there are no pre-requisite.
- If a pathway requires ENG 111, student must demonstrate English and reading college-readiness on approved assessment or placement test (see page 4) before taking English course.
- If a pathway requires MAT 152, students must demonstrate English and reading, and math college readiness on approved assessment or placement test (see page 4) before taking math course.
- If a pathway requires MAT 172, students must demonstrate math college readiness on approved assessment or placement test (see page 4) before taking math course.

For the purpose of calculating student high school Grade Point Average (GPA), courses are weighted in accordance with SBE policy GCS-L-004.

Air Conditioning, Heating, and Refrigeration Technology – Heat Pump (C35100BP)			
Junior Year – Fall			
AHR 110	Introduction to Refrigeration	8 CH	5 SHC
Junior Year – Spring			
AHR 111	HVACR Electricity	4 CH	3 SHC
AHR 160	Refrigerant Certification	1 CH	1 SHC
Senior Year – Fall			
AHR 130	HVAC Controls (pre-req. AHR 111)	4 CH	3 SHC
Senior Year – Spring			
AHR 114	Heat Pump Technology (pre-req. AHR 110)	6 CH	4 SHC

TOTAL Semester Hours of Credit: 16

Estimated Fees for Pathway (not including textbooks): \$220.00

Automotive Systems Technology (C60160P)			
Junior Year – Fall			
TRN 110	Introduction to Transport Technology	3 CH	2 SHC
TRN 130	Introduction to Sustainable Transportation	8 CH	3 SHC
Junior Year – Spring			
TRN 120	Basic Transportation Electricity	7 CH	5 SHC
Senior Year – Fall			
AUT 181	Engine Performance I	5 CH	3 SHC
AUT 181A	Engine Performance I Lab	3 CH	1 SHC
Senior Year – Spring			
TRN 145	Advanced Transportation Electronics (pre-req. TRN 120)	5 CH	3 SHC

TOTAL Semester Hours of Credit: 17

Estimated Fees for Pathway (not including textbooks): \$220.00

Basic Biotechnology (C20100AP)

Junior or Senior Year – Fall

BIO 111	General Biology I (T*)	6 CH	4 SHC
MAT 152	Statistical Methods I (T*) (English, reading, and math placement test scores required)	5 CH	4 SHC

Junior or Senior Year – Spring

BIO 112	General Biology II (T*) (pre-req. BIO 111)	6 CH	4 SHC
BIO 275	Microbiology (pre-req. ENG 090, RED 090, and BIO 111 or BIO 168)	6 CH	4 SHC

TOTAL Semester Hours of Credit: 16

Estimated Fees for Pathway (not including textbooks): \$110.00

Business Administration (C25120P)

Junior Year – Fall

BUS 110	Introduction to Business (T)	3 CH	3 SHC
BUS 115	Business Law I (T)	3 CH	3 SHC

Junior Year – Spring

BUS 137	Principles of Management (T)	3 CH	3 SHC
MKT 120	Principles of Marketing	3 CH	3 SHC

Senior Year – Fall

OST 137	Office Software Applications	3 CH	3 SHC
ECO 251	Principles of Microeconomics (T*)	3 CH	3 SHC

TOTAL Semester Hours of Credit: 18

Estimated Fees for Pathway (not including textbooks): \$141.00

Computer-integrated Machining Technology (C50210P)

Junior Year – Fall

MAC 141	Machining Applications I	8 CH	4 SHC
---------	--------------------------	------	-------

Junior Year – Spring

MAC 122	CNC Turning	4 CH	2 SHC
MAC 124	CNC Milling	4 CH	2 SHC

Senior Year – Fall

MAC 131	Blueprint Reading/ Mach I	3 CH	2 SHC
---------	---------------------------	------	-------

Senior Year – Spring

MAC 142	Machining Application II	8 CH	4 SHC
---------	--------------------------	------	-------

TOTAL Semester Hours of Credit: 14

Estimated Fees for Pathway (not including textbooks): \$220.00

Cosmetology (C55140P) – Lincoln Campus

Junior Year – Fall			
COS 111AB	Cosmetology Concepts I	2 CH	2 SHC
COS 112AB	Salon I	12 CH	4 SHC
Junior Year – Spring			
COS 111BB	Cosmetology Concepts I	2 CH	2 SHC
COS 112BB	Salon I	12 CH	4 SHC
Senior Year – Fall			
COS 113AB	Cosmetology Concepts II	2 CH	2 SHC
COS 114AB	Salon II	12 CH	4 SHC
Senior Year – Spring			
COS 113BB	Cosmetology Concepts II	2 CH	2 SHC
COS 114BB	Salon II	12 CH	4 SHC

TOTAL Semester Hours of Credit: 24

Estimated Fees for Pathway (not including textbooks): \$2500.00

- * Students will need to also complete COS 115 and COS 116 in the summer following their high school graduation in order to complete 1200 performance hours to sit for the State Board exam to become an apprentice.
- * The Cosmetology Program is only offered on the Lincoln Campus located in Lincoln.

Criminal Justice (C55180P)

Junior Year – Fall			
CJC 111	Introduction to Criminal Justice (T)	3 CH	3 SHC
CJC 231	Constitutional Law	3 CH	3 SHC
Junior Year – Spring			
CJC 112	Criminology	3 CH	3 SHC
CJC 141	Corrections (T)	3 CH	3 SHC
Senior Year – Fall			
CJC 131	Criminal Law	3 CH	3 SHC
CJC 212	Ethics & Community Relations	3 CH	3 SHC

TOTAL Semester Hours of Credit: 18

Estimated Fees for Pathway (not including textbooks): \$129.00

Early Childhood Education - Preschool Education Certificate (C55220G)

Junior Year – Fall			
EDU 119	Introduction to Early Childhood Education	4 CH	4 SHC
EDU 131	Child, Family, and Community (English/reading placement test scores required)	3 CH	3 SHC
Junior Year – Spring			
EDU 145	Child Development II (English/reading placement test scores required)	3 CH	3 SHC
EDU 146	Child Guidance (English/reading placement test scores required)	3 CH	3 SHC
Senior Year – Fall			
EDU 153	Health, Safety, and Nutrition (English/reading placement test scores required)	3 CH	3 SHC

TOTAL Semester Hours of Credit: 16

Estimated Fees for Pathway (not including textbooks): \$110.00

Electrical Systems Technology – Industrial Wiring (C35130P)

Junior Year – Fall

ELC 113	Residential Wiring	8 CH	4 SHC
---------	--------------------	------	-------

Junior Year – Spring

ELC 112	DC/AC Electricity	9 CH	5 SHC
---------	-------------------	------	-------

Senior Year – Fall

ELC 128	Introduction to PLC	5 CH	3 SHC
---------	---------------------	------	-------

Senior Year – Spring

ELC 231	Electric Power Systems (pre-req. ELC 112)	5 CH	4 SHC
---------	---	------	-------

TOTAL Semester Hours of Credit: 16

Estimated Fees for Pathway (not including textbooks): \$200.00

Electronics Engineering Technology (C40200P)

Junior Year – Fall

MAT 171	Pre-calculus Algebra (T*) (math placement test scores required)	5 CH	4 SHC
---------	---	------	-------

Junior Year – Spring

ELC 131	Circuit Analysis I	6 CH	4 SHC
---------	--------------------	------	-------

Senior Year – Fall

ELN 133	Digital Electronics (math placement test scores required)	6 CH	4 SHC
---------	---	------	-------

TOTAL Semester Hours of Credit: 12

Estimated Fees for Pathway (not including textbooks): \$153.00

Emergency Management Certificate (C55460P)

Junior or Senior Year – Fall

EPT 140	Emergency Management	3 CH	3 SHC
---------	----------------------	------	-------

EPT 210	Response and Recovery	3 CH	3 SHC
---------	-----------------------	------	-------

Junior or Senior Year – Spring

EPT 220	Terrorism and Emergency Management	3 CH	3 SHC
---------	------------------------------------	------	-------

EPT 275	Emergency OPS Center Management	3 CH	3 SHC
---------	---------------------------------	------	-------

TOTAL Semester Hours of Credit: 12

Estimated Fees for Pathway (not including textbooks): \$110.00

Emergency Medical Science (C45340P)

Junior Year – Fall

BIO 168	Anatomy and Physiology I (T)	6 CH	4 SHC
---------	------------------------------	------	-------

Junior Year – Spring

BIO 169	Anatomy and Physiology II (T) (pre-req. BIO 168)	6 CH	4 SHC
---------	--	------	-------

Senior Year – Fall

MED 120	Survey of Medical Terminology	2 CH	2 SHC
---------	-------------------------------	------	-------

Senior Year – Spring

EMS 110	EMT	12 CH	8 SHC
---------	-----	-------	-------

TOTAL Semester Hours of Credit: 18

Estimated Fees for Pathway (not including textbooks): \$99.00

Esthetics (C55230P) – Kimbrell Campus

Junior or Senior Year – Fall

COS 119	Esthetics Concepts (English, reading, and math placement test scores required)	2 CH	2 SHC
COS 120	Esthetics Salon I (English, reading, and math placement test scores required)	18 CH	6 SHC

Junior or Senior Year – Spring

COS 125	Esthetics Concepts II (English, reading, and math placement test scores required)	2 CH	2 SHC
COS 126	Esthetics Salon II (English, reading, and math placement test scores required)	18 CH	6 SHC

TOTAL Semester Hours of Credit: 16

Estimated Fees for Pathway (not including textbooks): \$1300.00

* The Esthetics program is only offered on the Kimbrell Campus located in Belmont.

Fire Protection Technology (C55240P)

Junior Year – Fall

FIP 228	Local Government Finance	3 CH	3 SHC
---------	--------------------------	------	-------

Senior Year – Fall

FIP 120	Introduction to Fire Protection	3 CH	3 SHC
FIP 124	Fire Prevention and Public Education	3 CH	3 SHC

Senior Year – Spring

FIP 132	Building Construction	3 CH	3 SHC
FIP 146	Fire Protection Systems	5 CH	4 SHC

TOTAL Semester Hours of Credit: 16

Estimated Fees for Pathway (not including textbooks): \$129.00

Foundations of Biotechnology (C20100BP)

Junior or Senior Year – Fall

BIO 168	Anatomy and Physiology I (T)	6 CH	4 SHC
ENG 111	Writing and Inquiry (T*) (English/reading placement test scores required)	3 CH	3 SHC

Junior or Senior Year – Spring

BIO 169	Anatomy and Physiology II (T) (pre-req. BIO 168)	6 CH	4 SHC
SOC 210	Introduction to Sociology (T*)	3 CH	3 SHC

TOTAL Semester Hours of Credit: 14

Estimated Fees for Pathway (not including textbooks): \$110.00

Health Science: Therapeutic and Diagnostic Services Nurse Aide I (D45970P)

Junior Year – Fall

BIO 168	Anatomy and Physiology I (T)	6 CH	4 SHC
ENG 111	Writing and Inquiry (T*) (English/reading placement test scored required)	3 CH	3 SHC
PSY 150	General Psychology (T*)	3 CH	3 SHC

Junior Year – Spring

BIO 169	Anatomy and Physiology II (T)	6 CH	4 SHC
CIS 110	Introduction to Computers (T)	4 CH	3 SHC
MED 120	Survey of Medical Terminology	2 CH	2 SHC

Senior Year – Fall

NAS 101*	Nursing Assistant I	10 CH	6 SHC
PSY 241	Developmental Psychology (T) (pre-req. PSY 150)	3 CH	3 SHC
ENG 112	Writing and Research in the Disciplines (T*) (pre-req. ENG 111)	3 CH	3 SHC

Senior Year – Spring

HEA 112	First Aid and CPR (T)	2 CH	2 SHC
BIO 275	Microbiology (pre-req. ENG 090, RED 090, and BIO 168 or BIO 111)	6 CH	4 SHC

TOTAL Semester Hours of Credit: 37

Estimated Fees for Pathway (not including textbooks): \$1050.00

- * Nurse Aide I (NAS 101) – Students can only enroll if they are at least 16 ½ years old before they start the class. (Due to clinical requirements, students must be seniors to enroll.)
- * All students must have (2) forms of current, not expired, official signature -bearing identification in order to register and take the North Carolina Nurse Aide I examination and skills evaluation. One of the identification forms must be photo -bearing and one form must be a U.S. government -issued Social Security card, signed and non-laminated.

Human Services: Addiction and Youth in Crisis (C45380AP)

Junior or Senior Year – Fall

ENG 111	Writing and Inquiry (T*) (English/reading placement test scored required)	3 CH	3 SHC
HSE 110	Introduction to Human Services	4 CH	3 SHC
SAB 135	Addictive Process	3 CH	3 SHC

Junior or Senior Year – Spring

BIO 110	Principles of Biology (T*)	6 CH	4 SHC
HSE 227	Children and Adolescence in Crisis (pre-req. HSE 110)	3 CH	3 SHC

TOTAL Semester Hours of Credit: 16

Estimated Fees for Pathway (not including textbooks): \$110.00

Human Services: Leadership Certificate (C45380P)

Junior or Senior Year – Fall

SAB 135	Addictive Process	3 CH	3 SHC
HSE 127	Conflict Resolution	4 CH	3 SHC

Junior or Senior Year – Spring

HSE 245	Stress Management	4 CH	3 SHC
HSE 120	Interpersonal Relations	3 CH	3 SHC

TOTAL Semester Hours of Credit: 12

Estimated Fees for Pathway (not including textbooks): \$86.00

Information Technology Core (C255090AP)

Junior Year – Fall			
CIS 110	Introduction to Computers (T)	4 CH	3 SHC
CIS 115	Intro to Programming and Logic (T) (math placement test scores are required)	5 CH	3 SHC
Junior Year – Spring			
CTS 115	Information Systems Business Concepts (T)	3 CH	3 SHC
Senior Year – Fall			
CTI 110	Web, Pgm, and Db Foundation	4 CH	3 SHC
CTI 120	Network and Security Foundation	4 CH	3 SHC

TOTAL Semester Hours of Credit: 15
Estimated Fees for Pathway (not including textbooks): \$165.00

Information Technology: Healthcare Informatics (C25590LP)

Junior Year – Fall			
OST 141	Medical Office Terms I (English/reading placement test scores required)	3 CH	3 SHC
HBI 113	Survey of Medical Insurance	3 CH	3 SHC
Junior Year – Spring			
OST 142	Medical Office Terms II (pre-req. OST 141)	3 CH	3 SHC
HBI 110	Issues and Trends in HBI	3 CH	3 SHC
Senior Year – Fall			
HMT 110	Introduction to Healthcare Management	3 CH	3 SHC

TOTAL Semester Hours of Credit: 15
Estimated Fees for Pathway (not including textbooks): \$153.00

Latent Evidence (Forensic Science) (C5518CP)

Junior Year – Fall			
CJC 144	Crime Scene Processing	5 CH	3 SHC
CJC 146	Trace Evidence	5 CH	3 SHC
Junior Year – Spring			
CJC 114	Investigative Photography	3 CH	2 SHC
CJC 222	Criminalistics	3 CH	3 SHC
Senior Year – Fall			
CJC 245	Friction Ridge Analysis	5 CH	3 SHC

TOTAL Semester Hours of Credit: 14
Estimated Fees for Pathway (not including textbooks): \$129.00

Manufacturing Technology (C50320P)

Junior Year – Fall			
EGR 115	Introduction to Technology	5 CH	3 SHC
ISC 112	Industrial Safety	2 CH	2 SHC
Junior Year – Spring			
MEC 151	Mechanical Mfg. Systems	3 CH	2 SHC
Senior Year – Fall			
DFT 151	CAD I (math test scores required)	5 CH	3 SHC
Senior Year – Spring			
ATR 112	Introduction to Automation (math test scores required)	5 CH	3 SHC

TOTAL Semester Hours of Credit: 13
Estimated Fees for Pathway (not including textbooks): \$153.00

Mechatronics Engineering Technology (C40350P)

Junior Year – Fall

ISC 112	Industrial Safety	2 CH	2 SHC
DFT 151	CAD I (math test scores required)	5 CH	3 SHC

Junior Year – Spring

MAT 171	Pre-calculus Algebra (T*) (math placement test scores required)	5 CH	4 SHC
---------	---	------	-------

Senior Year – Fall

ATR 112	Introduction to Automation	5 CH	3 SHC
---------	----------------------------	------	-------

Senior Year – Spring

ELC 131	Circuit Analysis I	6 CH	4 SHC
---------	--------------------	------	-------

TOTAL Semester Hours of Credit: 16

Estimated Fees for Pathway (not including textbooks): \$196.00

Office Administration (C25370P)

Junior or Senior Year – Fall

OST 130	Comprehensive Keyboarding	4 CH	3 SHC
OST 164	Office Editing	3 CH	3 SHC

Junior or Senior Year – Spring

OST 136	Word Processing	4 CH	3 SHC
OST 137	Office Applications I	4 CH	3 SHC

TOTAL Semester Hours of Credit: 12

Estimated Fees for Pathway (not including textbooks): \$110.00

Paralegal Technology (C25380P)

Junior Year – Fall

LEX 110	Introduction to Paralegal Study	2 CH	2 SHC
OST 137	Office Software Applications	4 CH	3 SHC

Junior Year – Spring

OST 286	Professional Development	3 CH	3 SHC
---------	--------------------------	------	-------

Senior Year – Fall

LEX 270	Law Office Management/ Technology	3 CH	2 SHC
LEX 280	Ethics & Professionalism	2 CH	2 SHC

TOTAL Semester Hours of Credit: 12

Estimated Fees for Pathway (not including textbooks): \$141.00

Welding Technology (C50420P)

Junior Year – Fall

BPR 111	Print Reading	3 CH	2 SHC
WLD 141	Symbols and Specifications	4 CH	3 SHC

Junior Year – Spring

WLD 110	Cutting Processes	4 CH	2 SHC
---------	-------------------	------	-------

Senior Year – Fall

WLD 121	GMAW (MIG) FCAW/ Plate	8 CH	4 SHC
---------	------------------------	------	-------

Senior Year – Spring

WLD 131	GTAW (TIG) Plate	8 CH	4 SHC
---------	------------------	------	-------

TOTAL Semester Hours of Credit: 15

Estimated Fees for Pathway (not including textbooks): \$600.00

Program Costs

Tuition

Tuition is waived for all Career and College Promise students.

Instructional Fees

Instructional Fees vary based on program of student and local educational agency. See desired program for more specifics, and ask your high school counselor or career development coordinator for additional information.

Textbooks and Textbook Access Codes

Required textbooks and textbook access codes costs vary by program of study and local education agency. Textbook access codes allow students to access course content online, such as exams, interactive videos, or course assignments. **Before purchasing a used textbook please check with your instructor to see if a textbook access code is required.** Please ask your high school counselors for additional information.

Gaston College Student Policies

Dropping a Course

Dropping a course is different than withdrawing from a course. Dropping a course means a student may be entitled to a 100 percent refund if a student officially ***drops a course prior to the first official day of the semester.***

- During fall and spring, the 10 percent date is within the first 7-10 days. During summer, the 10 percent date is within the first 3-6 days. See the Gaston College Calendar, or check with the Office of Records and Registration for the exact 10 percent date.

CCP Student Withdrawal Process

CCP students who wish to withdraw from a course must contact their high school counselor. The high school counselor notifies the Office of Educational Partnerships in writing that the student wishes to withdraw. Withdrawals must be made by the 70 percent date of the course. A withdrawal letter grade of "WA" is assigned to a student who has attended at least one class session before the withdrawal is processed. "NS" is assigned to a student who has never attended a class session. Although the "WA" and "NS" grades appear on the student's academic transcript, these will not negatively affect the student's cumulative grade point average. In addition, students who do not attend classes will receive a grade of "F" unless an official withdrawal form has been completed. After the deadline date, withdrawals are granted for medical or administrative reasons only. These special circumstances require documentation and the approval of the instructor, division dean, and registrar. **Students are ultimately responsible for withdrawing from a course(s).**

Instructor Withdrawal Process

The instructor may choose to withdraw a student from class for non-attendance but they are not required to do so. Instructors must enter a "WI" grade through WebAdvisor within 21 days of the last date of attendance not exceeding the 70% point of the semester. **Students are ultimately responsible for withdrawing from a course(s).**

WI Grade

A "WI" will appear on the student's transcript if he/she is withdrawn by the instructor when the Attendance Policy is broken. WI grades count toward hours attempted but do not negatively affect the student's grade point average.

WA Grade

A "WA" will appear on the on the student's transcript if he/she chooses to withdraw from a course(s) within the first eleven weeks of the semester and has previously attended one or more class meetings. WA grades count toward hours attempted but do not negatively affect the student's grade point average. A student who wishes to withdraw from a course(s) must follow the official procedure.

FERPA

The Federal Educational Rights and Privacy Act (FERPA) of 1974 ensures the privacy rights of students and Gaston College complies with the provisions of FERPA. These federal and state requirements relate to accessibility and confidentiality of student records. FERPA applies once the Gaston College application for admission is completed, regardless of whether the student is 18 years old. Unless the student signs a consent form granting approval, no information may be released related to their record to anyone other than the student. FERPA Student Consent Forms are available in the Office of Records and Registration (in Student Affairs). If a parent claims the student as a dependent and provides the most recent year's federal tax return noting this, any information can be released. The tax return must be submitted to Student Affairs located on the second floor of the Myers Center on the Dallas Campus of Gaston College. Any questions may be directed to the Director of Records and Registration at 704.922.6202.

Additional Gaston College Policies

For additional details regarding Gaston College policies please refer to the Gaston College Student Handbook located online at <http://catalog.gaston.edu/index.php?catoid=16>

Gaston College Courses Prefixes and Locations

Gaston College courses are assigned section numbers and letters that serve specific designations. Career and College Promise students may enroll in any section of a course within their pathway, though they will need to adhere to the start and end dates of the course(s). See below for specific designations.

Face-to-Face Course Sections

Face-to-Face course section numbers include a D, L, or K depending on what campus the course meets on. Although these sections meet on campus, the course may have an online component.

- "D" indicates the course meets on the Dallas Campus (ENG 111.D01).
- "K" indicates the course meets on the Kimbrell Campus (ENG 111.K01). Please note: The Kimbrell Campus is located in Belmont.
- "L" indicates the course meets on the Lincoln Campus (ENG 111.L40).

Career and College Promise Course Sections

CCP course sections include a P, and closely follow the high school calendar breaks. CCP students are not required to enroll in "P" sections.

- "P" as the first letter is for CCP (ENG 111.P01)
- "G" as the first letter is for Gaston Early College (ENG 111.G01)

Hybrid Course Sections

Hybrid course section numbers include a 7. Hybrid course(s) require both face to face and online learning. A portion of the course will be taught on campus and a portion will be delivered online.

- "7" following the first letter is for a hybrid course (ENG 111.D7A)

Web Assisted courses are similar to hybrid courses as they meet onsite and online.

Online Sections

Online course section numbers include a 6. The entire course will be taught online.

- "6" following the first letter is for an online course (ENG 111.D6A)

Career and College Promise Course Offerings at HIGH SCHOOL LOCATIONS

A variety of CCP courses are taught on the high school campus. A minimum of 18 students is needed in order to deliver course instruction at a high school. See below for a list of those courses.

- (T) Denotes course is listed on the North Carolina Comprehensive Articulation Agreement (CAA) between NC Community Colleges and the UNC University System, and course will receive honors credit on the high school transcript.
- (T*) Denotes course is listed on the CAA as a UGETC course and **will receive the same weighted credit as Advanced Placement course for juniors effective Fall 2017.**

CCP Course Offerings at HIGH SCHOOL LOCATIONS – Fall 2018

Course Number	Course Title	Time	Meeting Dates	Delivery Method	Location
BIO 111	General Biology I (T*)	10:33-11:29AM	MWF	Hybrid	Lincoln Charter – Denver Campus
BIO 168	Anatomy & Physiology I (T)	1:00– 2:30PM	TTH	Hybrid	Lincoln County School of Technology (LCS)
BIO 168	Anatomy & Physiology I (T)	1:00-1:55PM	MWF	Hybrid	Lincoln Charter – Lincolnton Campus
BPR 111 and WLD 141	Print Reading	TBA	TBA	Face to Face	Lincoln County School of Technology (LCS)
	Symbols & Specifications				
CJC 111 and CJC 141	Intro to Criminal Justice (1st 8 weeks) (T)	1:30-3:00PM	M-TH	Face to Face	Ashbrook High School (GCS)
	Corrections (2nd 8 weeks) (T)				
CJC 111 and CJC 141	Intro to Criminal Justice (1st 8 weeks) (T)	8:00-9:35AM	M-TH	Face to Face	East Lincoln High School (LCS)
	Corrections (2nd 8 weeks) (T)				
CJC 111 and CJC 141	Intro to Criminal Justice (1st 8 weeks) (T)	8:30-10:00AM	M-TH	Face to Face	Highland School of Technology (GCS)
	Corrections (2nd 8 weeks) (T)				
CJC 111 and CJC 141	Intro to Criminal Justice (1st 8 weeks) (T)	11:49-1:19PM	M-TH	Face to Face	North Lincoln High School (LCS)
	Corrections (2nd 8 weeks) (T)				
EDU 119	Intro to Early Childhood Education	1:10-2:30PM	MW	Face to Face	Lincoln County School of Technology (LCS)
EDU 131	Child, Family, and Community	1:10-2:30PM	TTH	Face to Face	Lincoln County School of Technology (LCS)
EMS 110	EMT	TBA	TBA	Face to Face	Lincoln County School of Technology (LCS)
ENG 111	Expository English (T*)	8:00 -8:50 AM	TTH	Hybrid	Lincoln County School of Technology (LCS)
ENG 111	Expository English (T*)	ONLINE	ONLINE	ONLINE	Lincoln Charter School (both campuses)
FIP 120	Intro to Fire Protection	11:40AM – 12:40PM	M-TH	Face to Face	Lincoln County School of Technology (LCS)
MAT 171	Pre-Calculus Algebra (T*)	12:00-12:50PM	M-TH	Hybrid	Lincoln County School of Technology (LCS)
PSY 150	General Psychology (T*)	8:00 -8:50 AM	MW	Hybrid	Lincoln County School of Technology (LCS)
PSY 150 and SOC 210	General Psychology (T*)	2:00-3:30PM	MW	Face to Face	Highland School of Technology (GCS)
	Intro to Sociology (T*)		TTH		

CCP Course Offerings at HIGH SCHOOL LOCATIONS – Spring 2019

Course Number	Course Title	Time	Meeting Dates	Delivery Method	Location
ART 111	Art Appreciation (T*)	TBA	TBA	Face to Face	Lincoln Charter- Lincolnnton Campus
BIO 112	General Biology II (T*)	10:33-11:29AM	MWF	Hybrid	Lincoln Charter – Denver Campus
BIO 169	Anatomy & Physiology II (T)	1:00– 2:30PM	TTH	Hybrid	Lincoln County School of Technology (LCS)
BIO 169	Anatomy & Physiology II (T)	1:00-1:55PM	MWF	Hybrid	Lincoln Charter – Lincolnnton Campus
CJC 111 and CJC 141	Intro to Criminal Justice (1st 8 weeks) (T)	8:00–9:30AM	M-TH	Face to Face	Stuart W. Cramer High School (GCS)
	Corrections (2nd 8 weeks) (T)				
CJC 111 and CJC 141	Intro to Criminal Justice (1st 8 weeks) (T)	1:30-3:00PM	M-TH	Face to Face	Piedmont Community Charter School
	Corrections (2nd 8 weeks) (T)				
CJC 111 and CJC 141	Intro to Criminal Justice (1st 8 weeks) (T)	8:00-9:30AM	M-TH	Face to Face	Lincolnton High School (LCS)
	Corrections (2nd 8 weeks) (T)				
EDU 145	Child Development II	1:10-2:30PM	MW	Face to Face	Lincoln County School of Technology (LCS)
EDU 146	Child Guidance	1:10-2:30PM	TTH	Face to Face	Lincoln County School of Technology (LCS)
EMS 110	EMT	TBA	TBA	Face to Face	Cherryville High School (GCS)
ENG 112	Writing/Research in the Disciplines (T*)	8:00 -8:50 AM	MW	Hybrid	Lincoln County School of Technology (LCS)
ENG 112	Writing/Research in the Disciplines (T*)	ONLINE	ONLINE	ONLINE	Lincoln Charter School (both campuses)
FIP 124	Fire Prevention and Public Education	11:40AM – 12:40PM	M-TH	Face to Face	Lincoln County School of Technology (LCS)
PSY 150 and SOC 210	General Psychology (T*)	2:00-3:30PM	TTH	Face to Face	Highland School of Technology (GCS)
	Intro to Sociology (T*)		MW		
SOC 210	Introduction to Sociology (T*)	8:00 -8:50 AM	TTH	Hybrid	Lincoln County School of Technology (LCS)

If your high school is interested in additional offerings, please contact the Office of Educational Partnerships at 704.922.6482.



Career and College Promise Course Offerings at GASTON COLLEGE CAMPUSES

Gaston College offers a variety of courses to meet the specific needs of high school students. Numerous college transfer courses are taught in the mornings and afternoons on all three Gaston College campuses. Students may enroll in any course listed within their chosen pathway on any of the three campuses. Additionally, courses within the Human Services – Leadership Certificate are taught in the mornings at the Kimbrell Campus. The 2018-19 CCP course schedule is listed below. Please note: ***The schedule is subject to change.***

CCP Course Offerings at GASTON COLLEGE CAMPUSES – Fall 2018

Course Number	Course Title	Pathway	Time	Meeting Dates	Delivery Method	Location
ACA 122.P7C	College Transfer Success (T*)	College Transfer	8:00-8:50AM	F	Hybrid	Dallas Campus
ACA 122.P7A	College Transfer Success (T*)	College Transfer	8:00-8:50AM	F	Hybrid	Kimbrell Campus
ART 111.P7A	Art Appreciation (T*)	College Transfer	2:00-2:50PM	TTH	Hybrid	Dallas Campus
BIO 168.P7A	Anatomy & Physiology I (T)	College Transfer, Foundations of Biotech, EMS, Nurse Aid	8:00-8:50AM	TTHF	Hybrid	Dallas Campus
ECO 251.P7A	Principles of Microeconomics (T*)	College Transfer, Business Admin	2:00-2:50PM	TTH	Hybrid	Dallas Campus
ENG 111.P7B	Writing & Inquiry (T*)	College Transfer, Foundations of Biotech	8:00-8:50AM	MW	Hybrid	Dallas Campus
ENG 111.P7C	Writing & Inquiry (T*)	College Transfer	2:00-2:50PM	MW	Hybrid	Dallas Campus
ENG 111.P7A	Writing & Inquiry (T*)	College Transfer	8:00-8:50AM	MW	Hybrid	Kimbrell Campus
HIS 111.P7B	World Civilization I (T*)	College Transfer	8:00-8:50AM	TTH	Hybrid	Lincoln Campus
HSE 127.P7A	Conflict Resolution	Human Services Leadership	8:00-8:50AM	TTH	Hybrid	Kimbrell Campus
MAT 171.P7B	Pre-Calculus Algebra (T*)	College Transfer	8:00-8:50AM	MWF	Hybrid	Kimbrell Campus
MUS 110.P7B	Music Appreciation (T*)	College Transfer	8:00-8:50AM	TTH	Hybrid	Dallas Campus
MUS 110.P7A	Music Appreciation (T*)	College Transfer	8:00-8:50AM	TTH	Hybrid	Kimbrell Campus
OST 137.P7A	Office Software Applications	Office Admin, Business Admin	2:00-2:50PM	MW	Hybrid	Dallas Campus
POL 120.P7A	American Government (T*)	College Transfer	2:00-2:50PM	TTH	Hybrid	Dallas Campus
PSY 150.P7A	General Psychology (T*)	College Transfer	2:00-2:50PM	MW	Hybrid	Dallas Campus
SAB 135.P7A	Addictive Process	Human Services Leadership	8:00-8:50AM	MW	Hybrid	Kimbrell Campus
SOC 210.P7B	Intro to Sociology (T*)	College Transfer	8:00-8:50AM	TTH	Hybrid	Kimbrell Campus
SOC 210.P7C	Intro to Sociology (T*)	College Transfer	8:00-8:50AM	MW	Hybrid	Lincoln Campus

CCP Course Offerings at **GASTON COLLEGE CAMPUSES** – Spring 2019

Course Number	Course Title	Pathway	Time	Meeting Dates	Delivery Method	Location
ART 111	Art Appreciation (T*)	College Transfer	8:00-8:50AM	TTH	Hybrid	Dallas Campus
ART 111	Art Appreciation (T*)	College Transfer	8:00-8:50AM	TTH	Hybrid	Kimbrell Campus
BIO 111	General Biology I (T*)	College Transfer	8:00-8:50AM	MW	Hybrid	Kimbrell Campus
BIO 169	Anatomy & Physiology II (T)	Foundations of Biotech, EMS, Nurse Aid	8:00-8:50AM	TTHF	Hybrid	Dallas Campus
BUS 137	Principles of Management (T)	Business Admin	2:00-2:50PM	MW	Hybrid	Dallas Campus
ENG 112	Writing/Research in the Disciplines (T*)	College Transfer	8:00-8:50AM	MW	Hybrid	Dallas Campus
ENG 112	Writing/Research in the Disciplines (T*)	College Transfer	2:00-2:50PM	MW	Hybrid	Dallas Campus
ENG 112	Writing/Research in the Disciplines (T*)	College Transfer	8:00-8:50AM	MW	Hybrid	Kimbrell Campus
	Humanities/Fine Arts Requirement (TBD) (T*)	College Transfer	2:00-2:50PM	TTH	Hybrid	Dallas Campus
ENG 231/232 or 241/242	American Lit I / II or Brit. Lit. I / Brit Lit. II (T*)	College Transfer	8:00-8:50AM	TTH	Hybrid	Kimbrell Campus
HSE 120	Interpersonal Relations	Human Services Leadership	8:00-8:50AM	TTH	Hybrid	Kimbrell Campus
HSE 245	Stress Management	Human Services Leadership	8:00-8:50AM	MW	Hybrid	Kimbrell Campus
MAT 171	Pre-Calculus Algebra (T*)	College Transfer	2:00-2:50PM	MWF	Hybrid	Dallas Campus
MKT 120	Principles of Marketing	Business Admin	2:00-2:50PM	TTH	Hybrid	Dallas Campus
POL 120	American Government (T*)	College Transfer	8:15-9:05AM	TTH	Hybrid	Lincoln Campus
PSY 150	General Psychology (T*)	College Transfer	8:15-9:05AM	MW	Hybrid	Lincoln Campus
SOC 210	Intro to Sociology (T*)	College Transfer	8:00-8:50AM	MW	Hybrid	Dallas Campus
SOC 210	Intro to Sociology (T*)	College Transfer	8:00-8:50AM	MW	Hybrid	Dallas Campus

Gaston College Accounts and Log in Information

WebAdvisor

WebAdvisor is an online system used by students and faculty. Final grades, schedules, unofficial transcripts, and student account balances are just a few examples of what can be accessed through WebAdvisor.

Obtaining Your WebAdvisor User ID

1. Go to www.gaston.edu.
2. Click the WEBADVISOR link.
3. Click "What's my User ID?", then type in your Last Name, and enter either your Social Security Number or your College ID#, and click submit.

Logging Into WebAdvisor

1. Go to www.gaston.edu.
2. Click the WEBADVISOR link.
3. Click on Log In (upper right), provide your WebAdvisor User ID and password.
Note: Your initial password is your birthday in the form of mmddyy.
4. *If you forget your user name or password, click on "What is my UserName?" or "What is my Password?" and follow instructions.*

Gaston College Student ID Number

Your Gaston College student ID number is a unique seven digit personal identification number assigned to a student upon entering the College.

Obtaining your GC Student ID Number:

1. Log into WebAdvisor
2. Click on the "Students" icon
3. Click on "My Profile" under Academic Profile
4. Your student ID number will be listed under Personal Information next to College ID

GC Password Management

One password will access student email, lab, printing, Wi-Fi, and Blackboard. To reset your password visit: <https://gcpassmgt.gaston.edu/passwordreset/>

Blackboard

Blackboard is an online learning environment and course management system used for all online courses or online course components.

Accessing Blackboard:

1. Go to www.gaston.edu
2. Click on the BLACKBOARD link
3. Enter your username (your Bb username is the same as your WebAdvisor User ID – e.g. *WebAdvisorUserID@mymail.gaston.edu*)
4. Enter your password
5. Click Login

For Blackboard technical support call 704.922.2307 or 704.922.6515.

Please Note: Blackboard may not be available to new students until the first day of your class.

Student Email

Your Gaston College student email should be used for all written communication with college personnel.

Accessing your student email:

1. Go to www.gaston.edu
2. Click the STUDENT EMAIL link
3. Enter your username (your username is your WebAdvisor User ID followed by *@mymail.gaston.edu* – e.g. *WebAdvisorUserID@mymail.gaston.edu*)
4. Enter your password
5. Click Sign in

Computer Lab Login

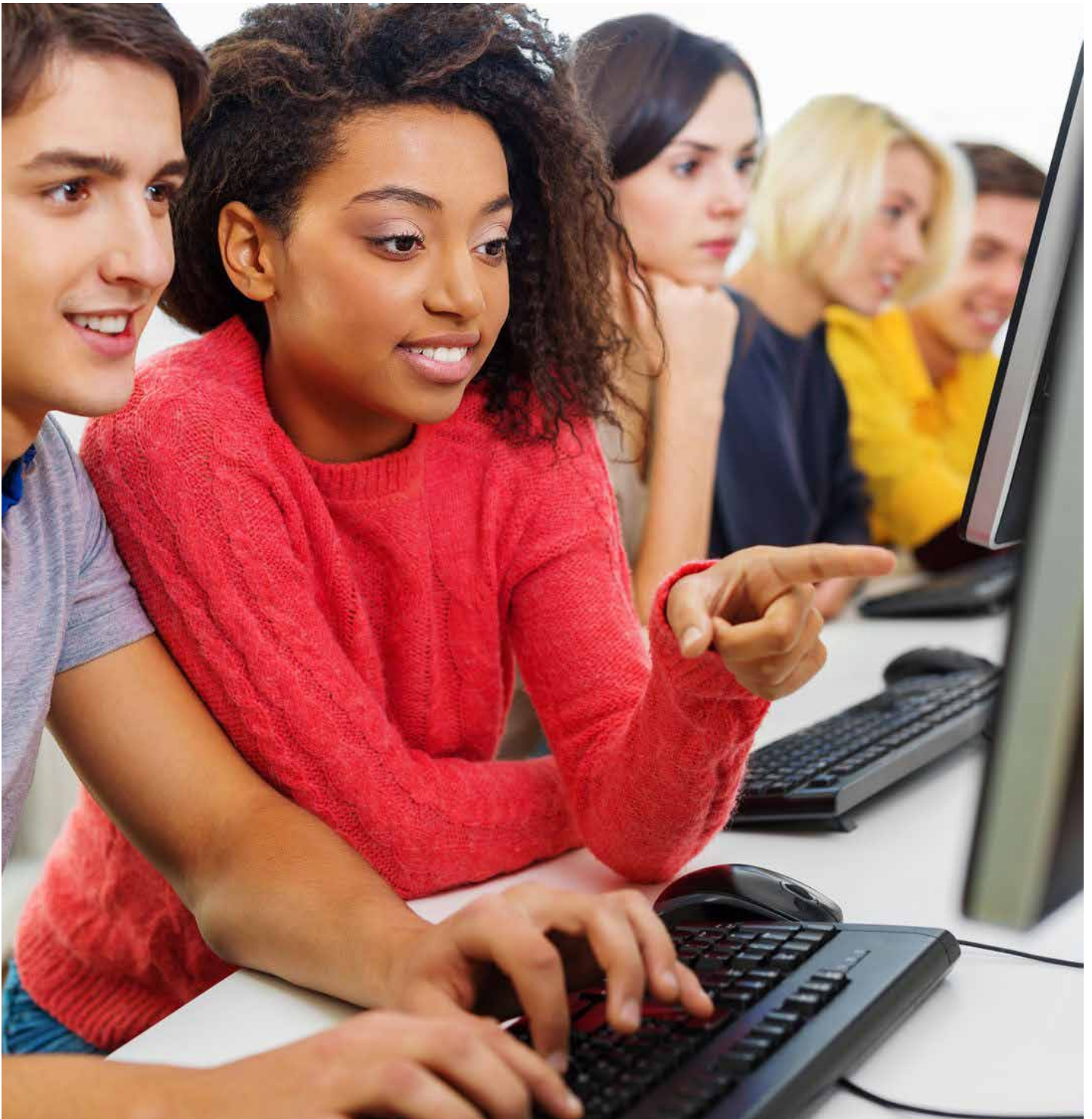
If you have not set up your GC Password Management Profile, you will be prompted to do so when logging into a computer lab.

Logging into a Computer in a Lab

1. Enter your WebAdvisor User ID
2. Enter your password
3. Click the arrow or press enter

Printing and Wi-Fi Login

You will be prompted to login. Use your Computer Lab Login credentials.



Student Resources

Disability Services

Gaston College provides education and support in compliance with the Rehabilitation Act of 1973 and the Americans with Disabilities Act of 1990. If you have a documented disability and would like to discuss how you may be eligible to receive special accommodations while attending Gaston College, please call the Special Needs Counselor at 704.922.6224 or 704.922.6220.

For more information visit: <http://www.gaston.edu/counseling-career-development/disability-services/>

The Gaston College Learning Center (GCLC)

The Gaston College Learning Center (GCLC), is designed to provide students with opportunities for academic and personal growth. The Center is committed to the philosophy that given adequate services, support, time, and appropriate teaching strategies, all students can successfully accomplish their academic goals, whether that goal includes transfer to a four-year institution or the successful completion of a single course. Services are available to a diverse constituency, and the Center actively provides support to all students in achieving their potential.

For more information visit: <http://www.gaston.edu/student-resources/learning-center/>

The Gaston College Libraries

The Gaston College Libraries strive to meet the information needs of the students, faculty, staff, and the community. The Libraries offer computers for research use, high-speed Internet access, a wireless network, more than 65,000 books, more than 2,000 videos and DVDs, extensive print and online periodicals, and more than 60 research databases.

For more information visit: <http://www.gaston.edu/library/>

The Gaston College Writing Center

The Gaston College Writing Center provides students support in writing to gain confidence and proficiency in the writing and communication processes. The Center assists with any writing assignment for any class, not just English.

For more information visit: <http://www.gaston.edu/writing-center/>

Additional Student Resources

For information regarding student resources provided by Gaston College, please see the Gaston College student handbook at <http://catalog.gaston.edu/content.php?catoid=12&navoid=372>





Gaston and Lincoln County high school students may be eligible to pursue a degree, diploma, or certificate at Gaston College with FREE tuition and fees!

What does a student have to do to be eligible?

To be eligible for the free two-years of tuition and fees a student must:

- Complete at least 15 credit hours of CCP or complete a CCP pathway
- 3.25 or higher unweighted high school GPA
- Minimum 2.0 GPA in college coursework while in CCP

Are there enrollment requirements?

Yes, students must do the following in order to receive the scholarship funds:

- Apply to GC as a degree-seeking, curriculum student
- Enroll in at least 15 credits hours in the fall semester immediately following graduation
- Complete a GC scholarships application and FAFSA application
- Complete all general admission requirements of the college – Application, Testing, High School Transcript, and New Student Orientation

What does the scholarship cover?

- This non-monetary, last dollars scholarship award is credited to the student account to cover tuition and fees up to \$1,250. Any unused funds are returned to the scholarship account.
- Books and other supplies are the student’s responsibility.

Where should I direct a student who may be interested in this program?

The Office of Financial Aid will review student’s eligibility and help eligible students access the funds of this scholarship. Have questions call 704.922.6227 or email financialaid@gaston.edu.

* The GC Promise Scholarship is made possible in part due to the generosity of the Gaston College Foundation donors. Helping students in our community achieve their full potential is the Foundation’s priority.



PRE-APPRENTICESHIP 321



**Contact us for
more information!**
apprenticeships@gaston.edu
704.922.2313

Opportunities for No-Cost Training and Future Employment

Pre-apprenticeship 321 is a training program that allows high school juniors and seniors to take college-level classes and intern during the summer with an advanced manufacturing company before they graduate high school.

Successful pre-apprentices benefit in several ways:

- Earn college credit while still in high school
- Explore potential career pathways in advanced manufacturing
- Obtain a pre-apprenticeship credential from the NC Community College System.
- Become candidates for available apprenticeships in Gaston and Lincoln counties

Next steps:

- Students should meet with their high school guidance counselor to enroll in Career and College Promise classes.
- Email apprenticeships@gaston.edu for a preapprenticeship program application.



www.gaston.edu

Contact Information

Kimberly Wyont, Director of Educational Partnerships
704.922.6482
wyont.kimberly@gaston.edu

Sheila Forgione, Secretary for Educational Partnerships
704.922.2424
forgione.sheila@gaston.edu

Gail Ford, Assistant Dean of the Lincoln Campus
704.748.5207
ford.gail@gaston.edu

Amy Weisgerber, Coordinator of Educational Partnerships
704.922.6297
weisgerber.amy@gaston.edu

Sharon Wilson, Career and College Promise Specialist
704.748.5234
wilson.sharon@gaston.edu

Cassey Wright, CCP Success and Outreach Coordinator
704-922-6247
wright.cassey@gaston.edu

Visit the Career and College Promise Web site for further details at
<http://www.gaston.edu/career-college-promise/>



Notes

Lined writing area consisting of 25 horizontal lines.



Gaston College

Opportunities For Life

Dallas Campus

201 Highway 321 South
Dallas, NC 28034
704.922.6200
704.922.2323 (f)

Lincoln Campus

P.O. Box 600
511 South Aspen St.
Lincolnton, NC 28093
704.748.5200
704.748.1074 (f)

Kimbrell Campus & Textile Technology Center

P.O. Box 1044
7220 Wilkinson Blvd.
Belmont, NC 28012
704.825.3737
704.825.7303 (f)