

Synchronicity Market Timing

Carolyn Boroden

Fibonacci Trading –McGraw Hill

IBB-30 min

L F R 25-Apr-19 Fri 16:00 107.18 107.44 106.98 107.36 0.59 +

Reload +50 500 bars

23Ap14:30
107.37, 4.55
34 Bars ↓

24Ap12:00
106.58, 1.26
4 Bars ↓

How do 4 points on a chart
predict a low on 4/25/2019??

↑
0 Bars
102.82, 0.00
18Ap10:30

↑
4 Bars
105.32, -2.05
24Ap10:00

↑
9 Bars
104.57, -2.01
25Ap10:00

Chart created by Dynamic Trader (c) 1996-2019

IBB-30 min

L F R 26-Apr-19 Fri 16:00 107.18 107.44 106.98 107.36 0.59 + Reload +50 522 bars

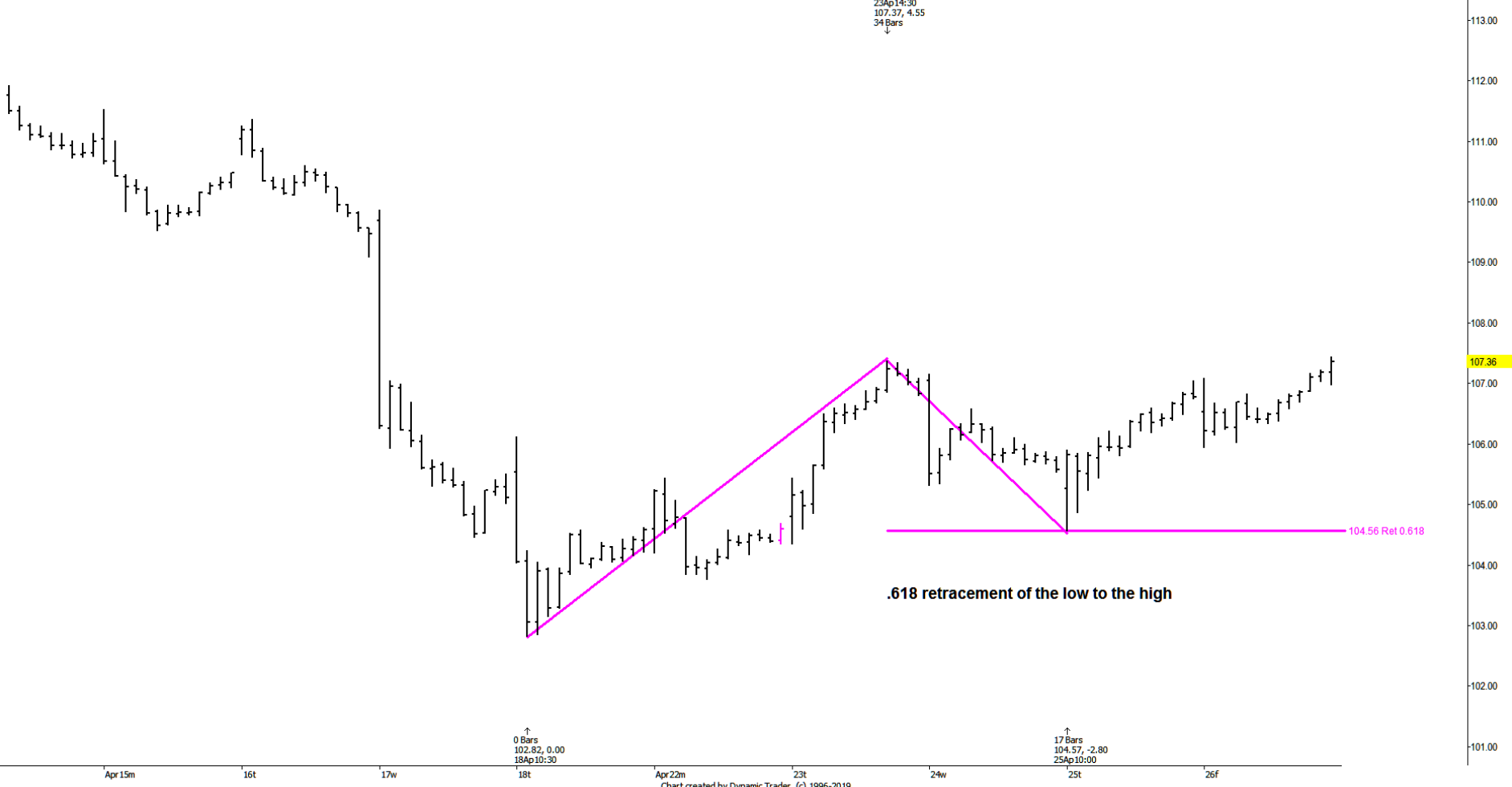


Chart created by Dynamic Trader (c) 1996-2019

IBB-30 min

L F R 26-Apr-19 Fri 16:00 107.18 107.44 106.98 107.36 0.59 + Reload +50 500 bars

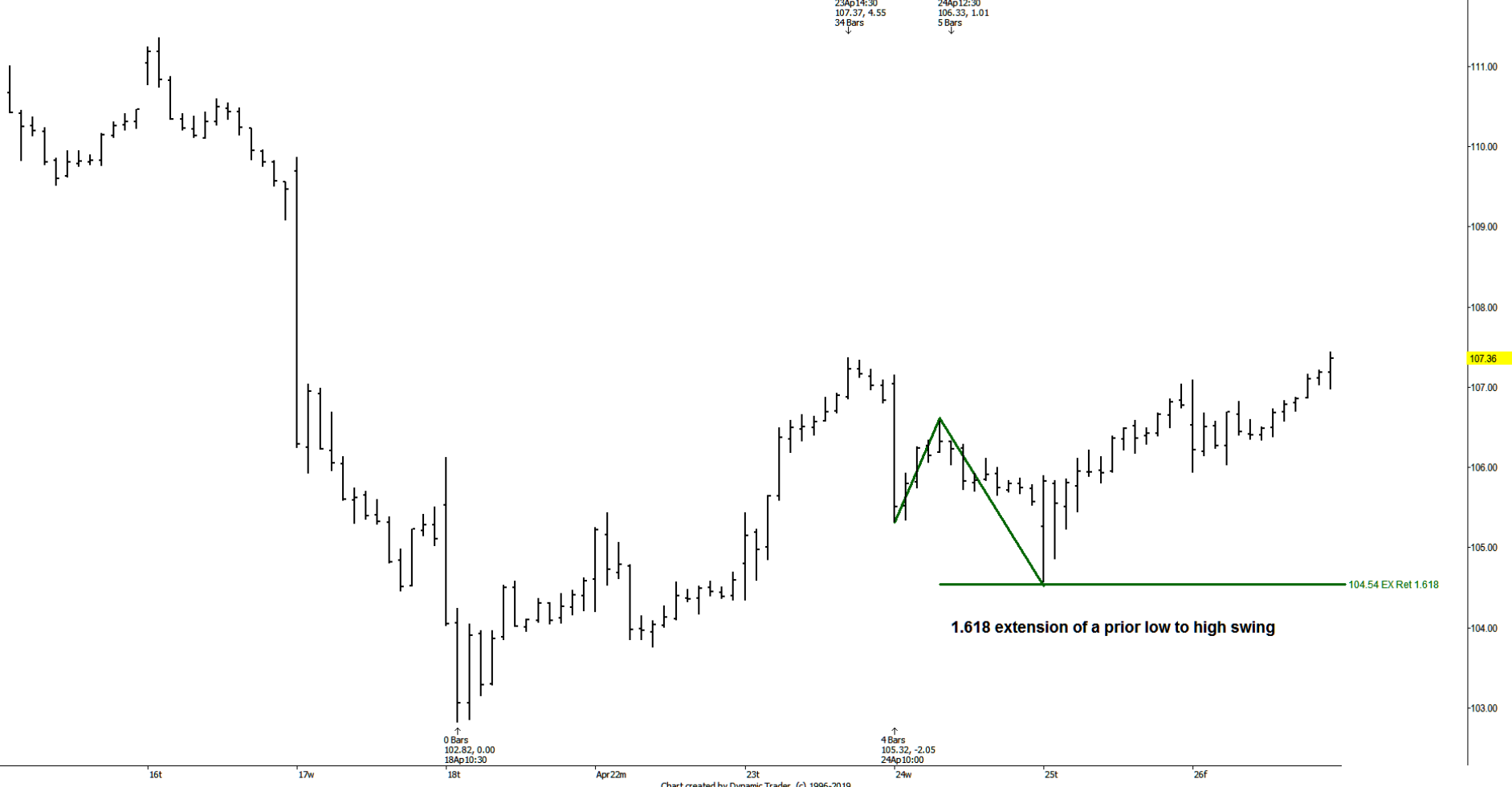
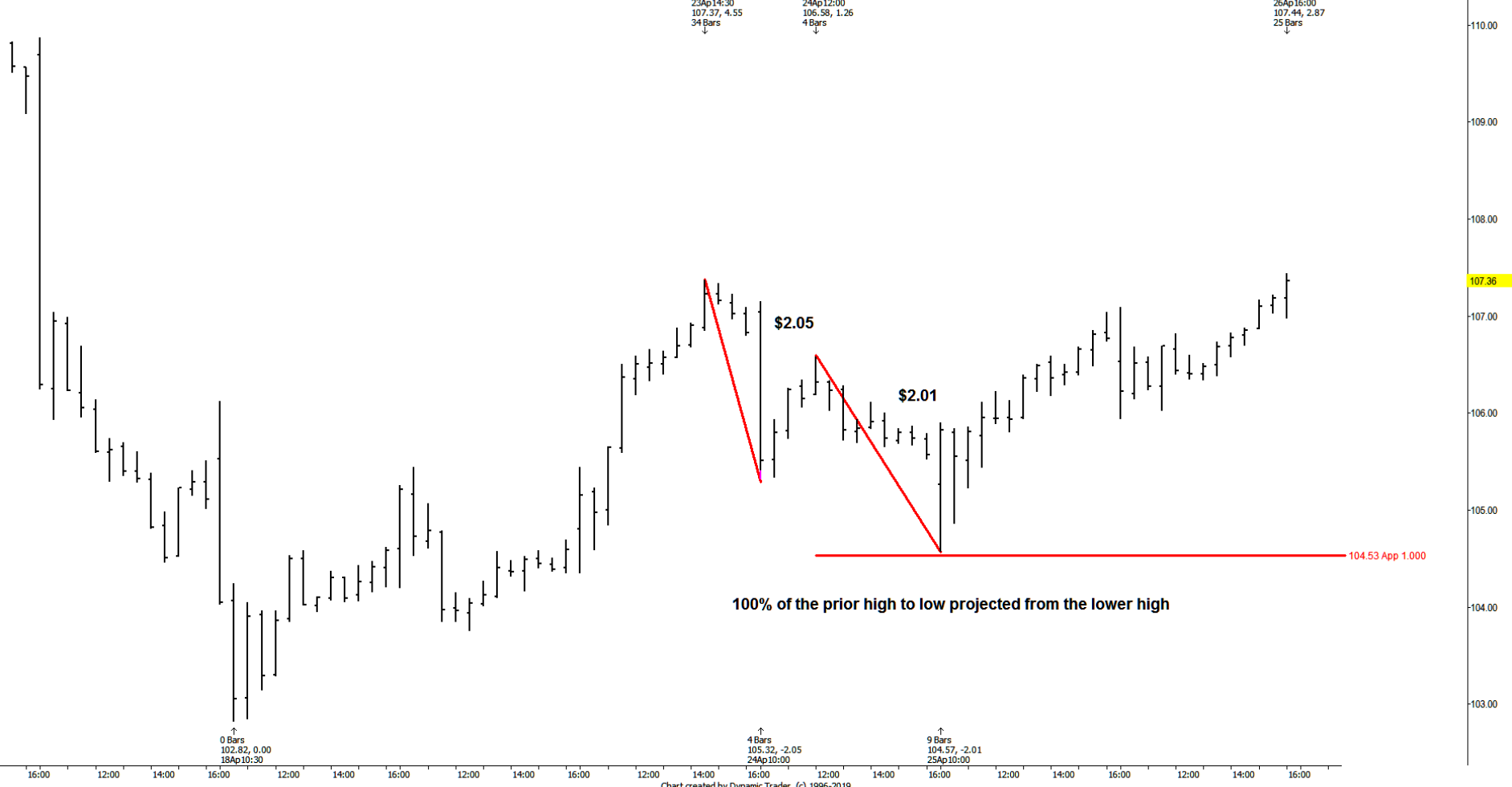


Chart created by Dynamic Trader (c) 1996-2019

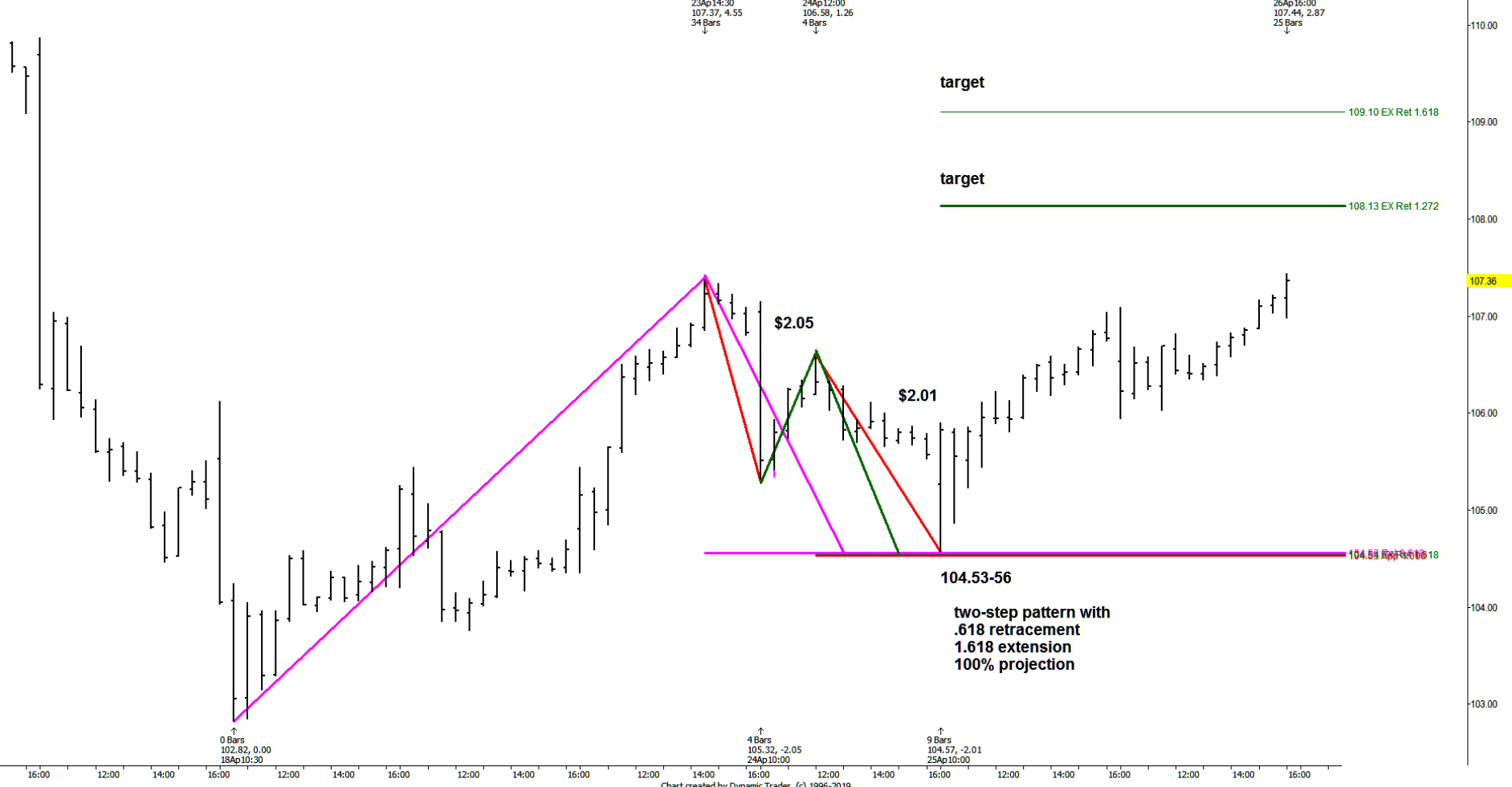
IBB-30 min

L F R 26-Apr-19 Fri 16:00 107.18 107.44 106.98 107.36 0.59 + Reload +50 500 bars



IBB-30 min

L F R 26-Apr-19 Fri 16:00 107.18 107.44 106.98 107.36 0.59 + Reload +50 500 bars



Why use this type of **Fibonacci** analysis??

It enables you to identify high probability, relatively low risk trade **SETUPS** where the risk is clearly defined along with the **TARGETS.**

This works on any **time frame** and essentially any good **market data**.

I have applied this method to **Stocks, ETF's, Futures and the FOREX markets**.

It is an excellent methodology to use with **OPTIONS** strategies!!

You can see things in the market that you will **NEVER** see using indicators alone.

Fibonacci Numbers

Fibonacci Number Series:

0,1,1,2,3,5,8,13,21,**34,55,89,144,233**,etc...

The number series will continue to infinity by adding the previous two numbers

Fibonacci **RATIOS**

derived from the # series

are used in this analysis

The ratios used are:

.382, .50, .618, .786, 1.0, 1.272 & 1.618

(.236, 2.618, 4.236-confirming ratios)

I can show you where **.618** came from...but what about some of these other ratios?

$$1.0 - .618 = .382$$

$$1.0 \text{ divided by } 2 = .50$$

$$\text{square root of } .618 = .786$$

1.618 is the expansion of .618

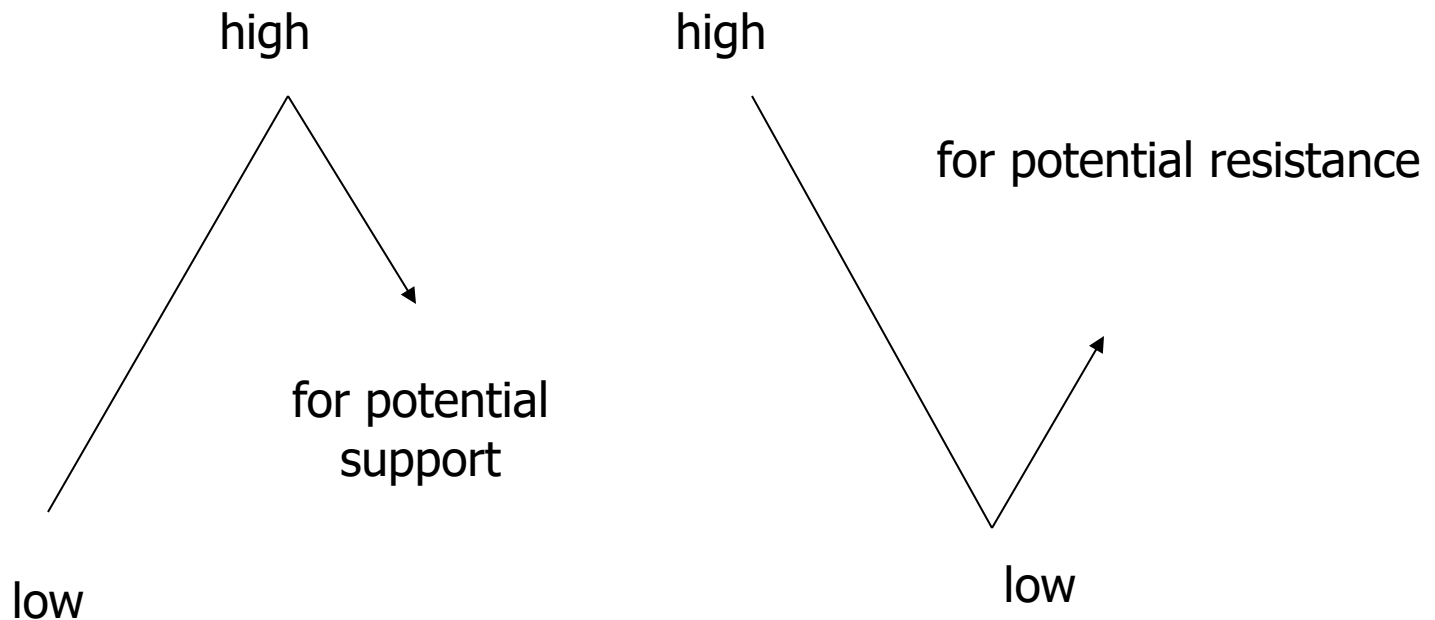
$$\text{square root of } 1.618 = 1.272$$

$$.618 - .382 = .236$$

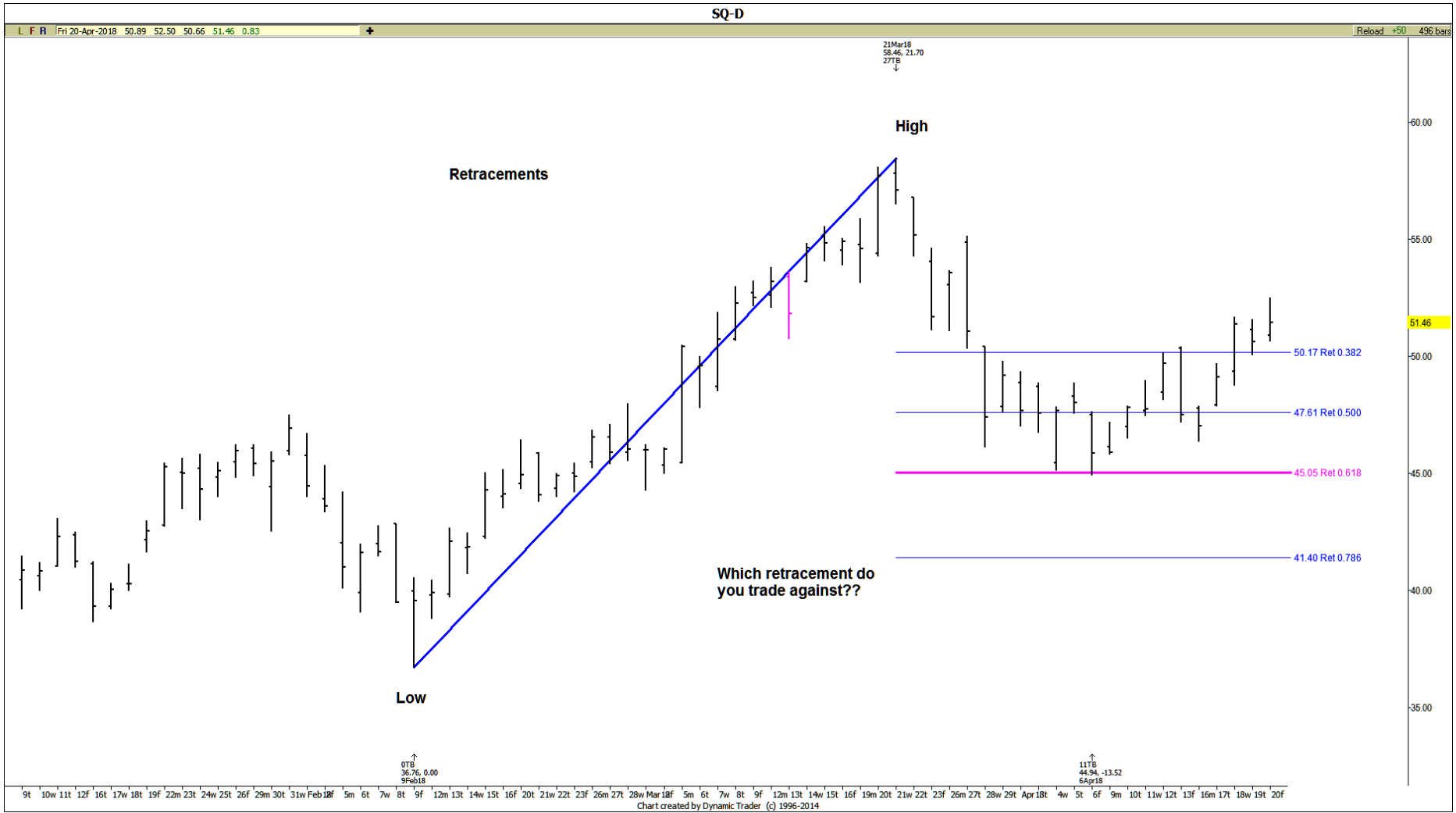
Fibonacci Price Retracements

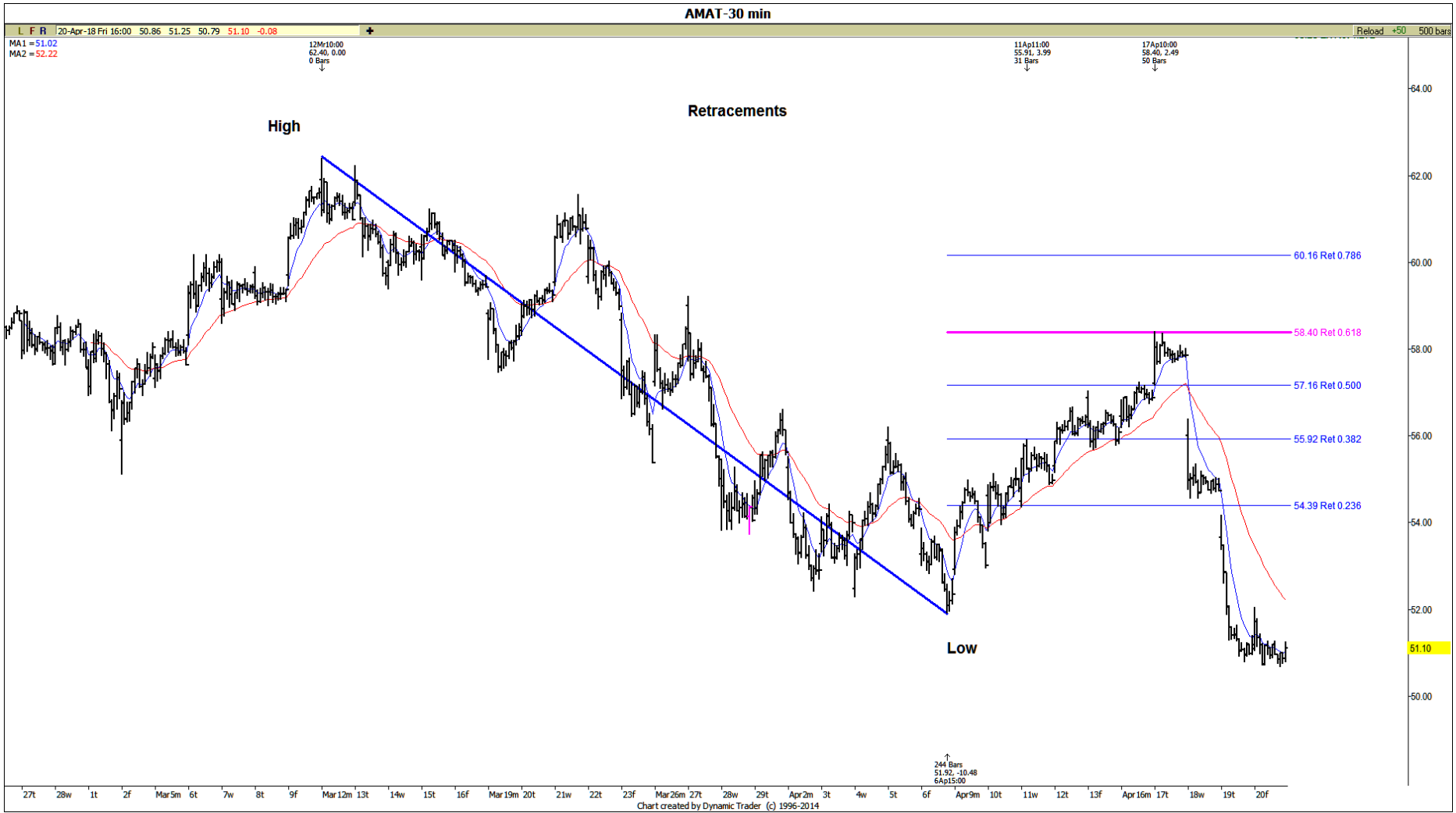
For possible support, we run low to high swings using the ratios below.

For possible resistance, we run high to low swings using the same ratios

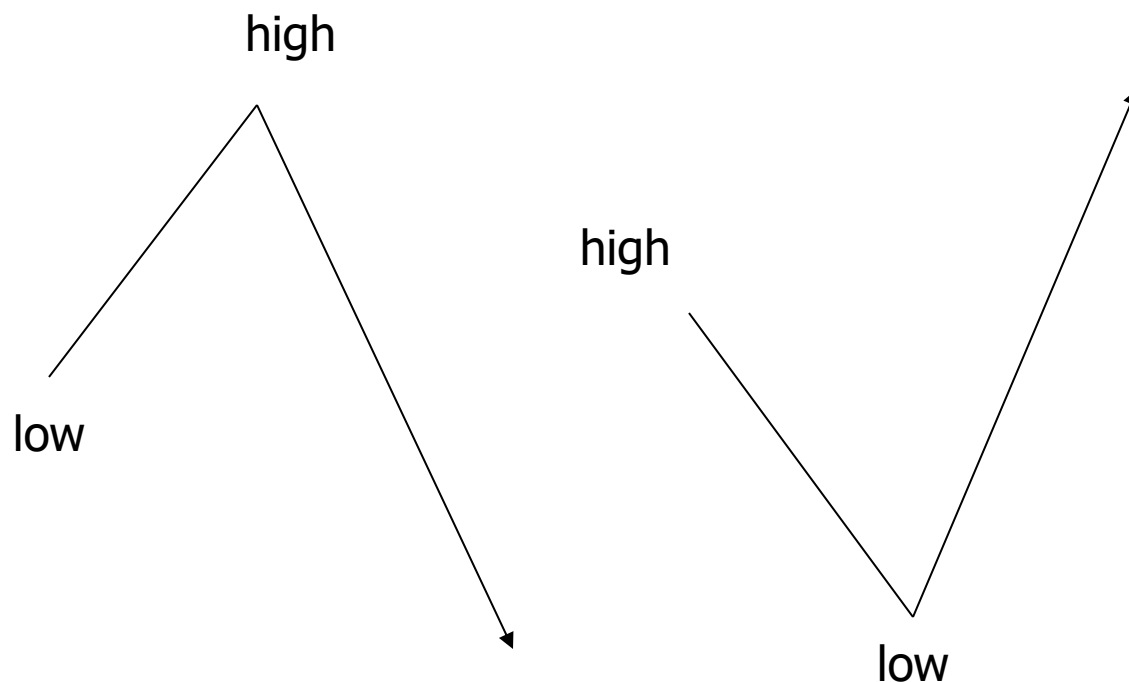


% Retracement **.382, .50, .618, .786**





Fibonacci Price Extensions



Price extensions are essentially Retracements beyond 100%.

We use the ratios of **1.272** and **1.618**.

We run the run low to high swings for possible support.

We run the high to low swings for possible resistance.



INTC-D

L F R Mon 5-Feb-2018 46.35 47.26 45.05 45.72 -0.43

Reload +50 479 bars

20Dec17
47.64 0.00
0TB
↓

29Jan18
50.85 8.41
12TB
↓

EXTENSIONS

high

low

50.85 EX Ret 1.618

49.05 EX Ret 1.272

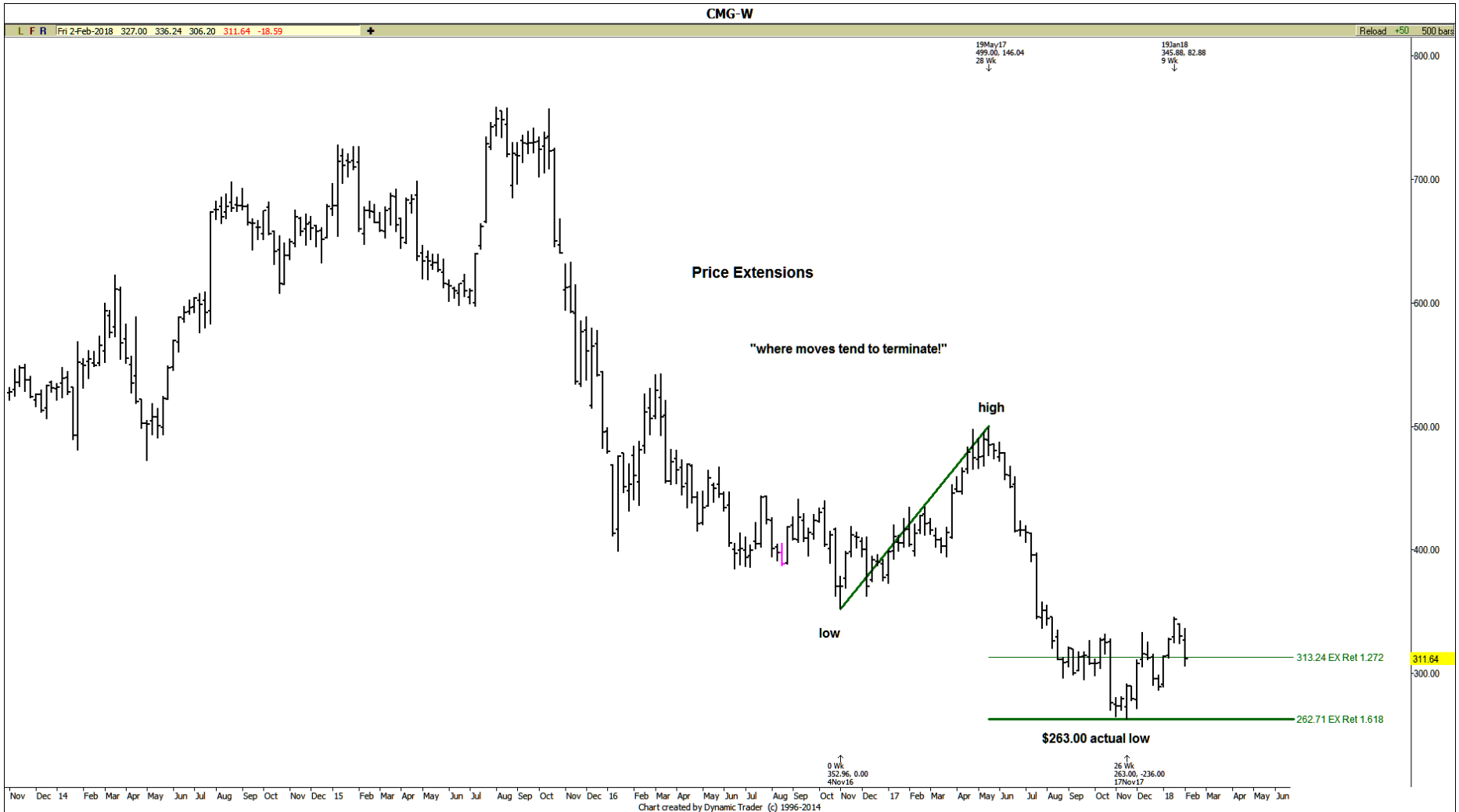
54.00
52.00
50.00
48.00
46.00
45.72
44.00
42.00
40.00
38.00
36.00
34.00
32.00

25 Sep 8 15 22 29 Oct 13 20 27 Nov 10 17 24 Dec 8 15 22 29 Jan 12 19 26 Feb 9 16 23

Chart created by Dynamic Trader (c) 1996-2014

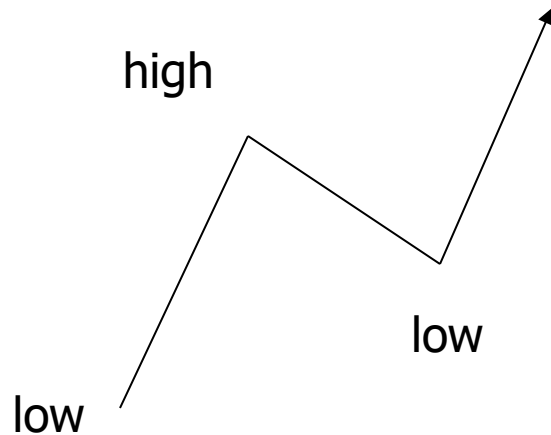
↑
13TB
42.44 -5.20
10Jan18

↑
5TB
45.05 -5.80
5Feb18

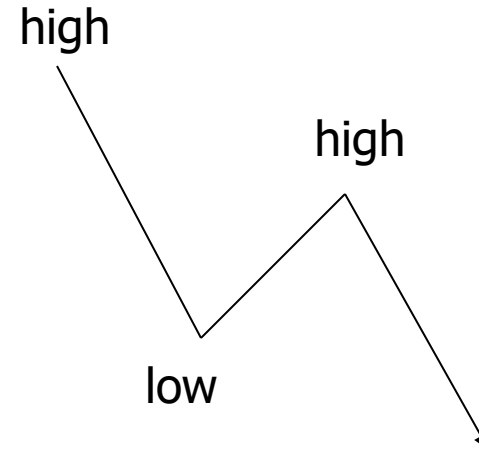


Fibonacci Price Projections

for possible resistance



for possible support



Fibonacci price projections are measured from **3 points** on the chart to compare swings in the same direction. We mostly use **1.00%** and sometimes **1.618** for these projections.

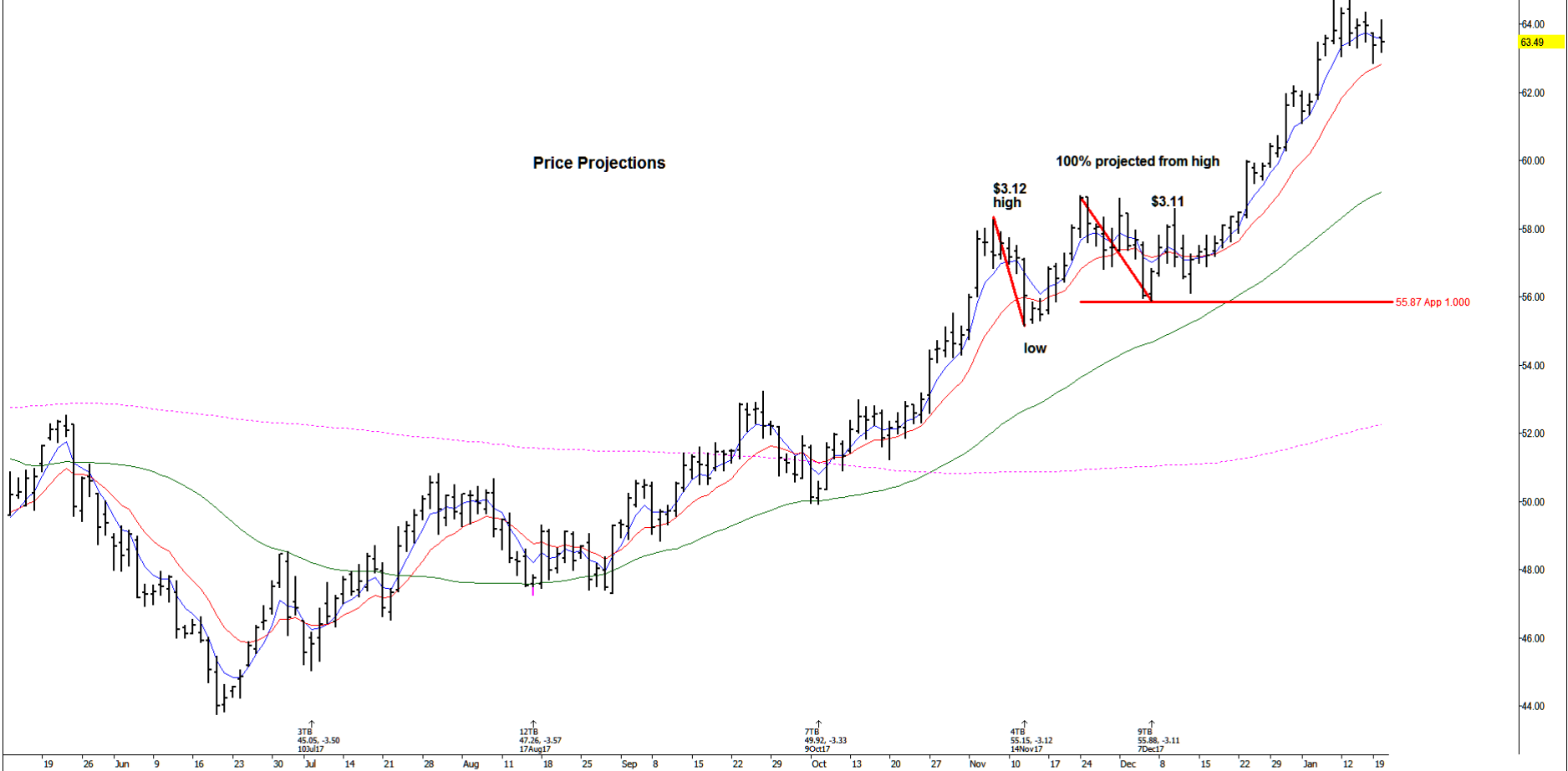
We run prior low to high swings from another low for possible resistance.

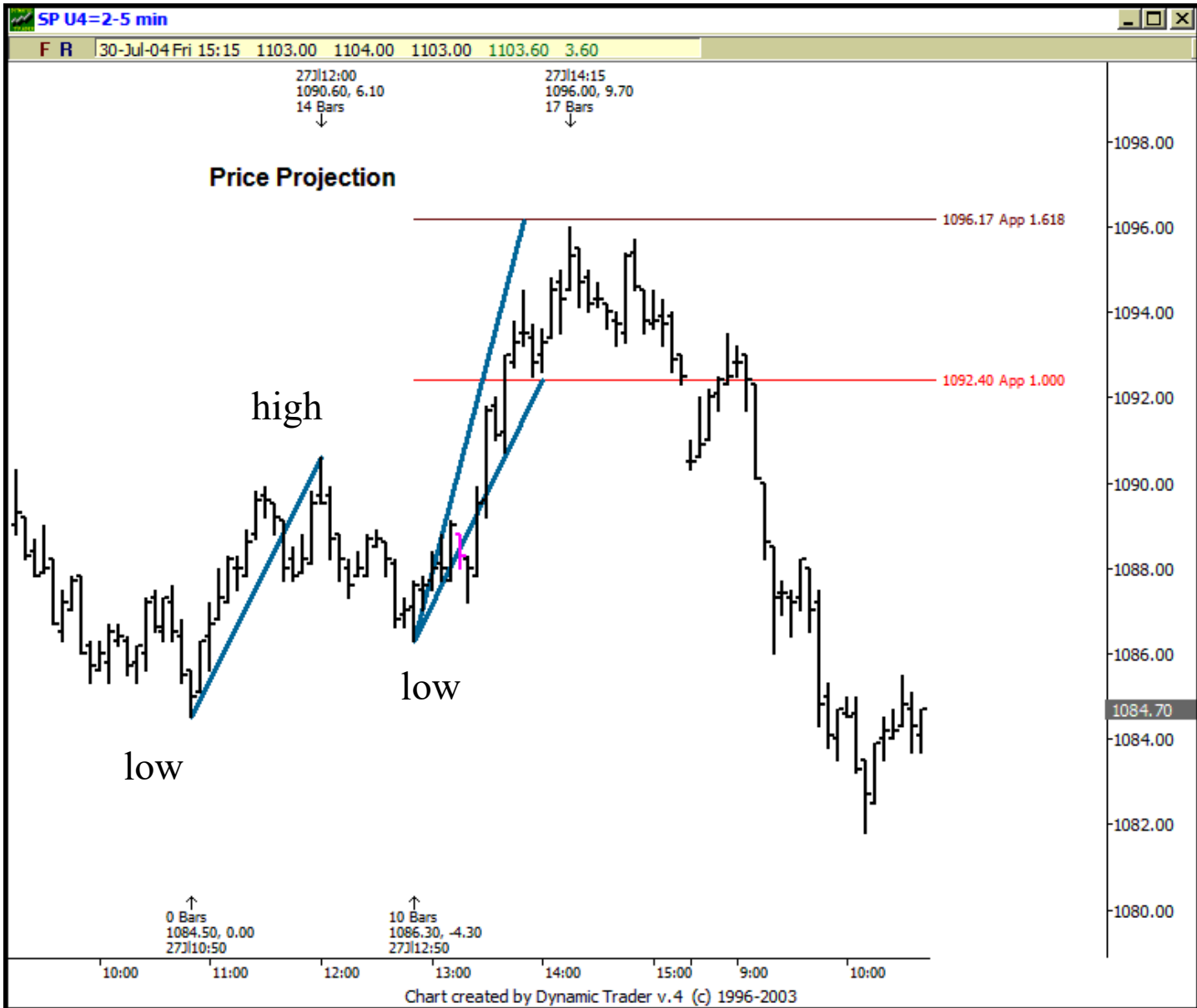
We run prior high to low swings from another high for possible support.

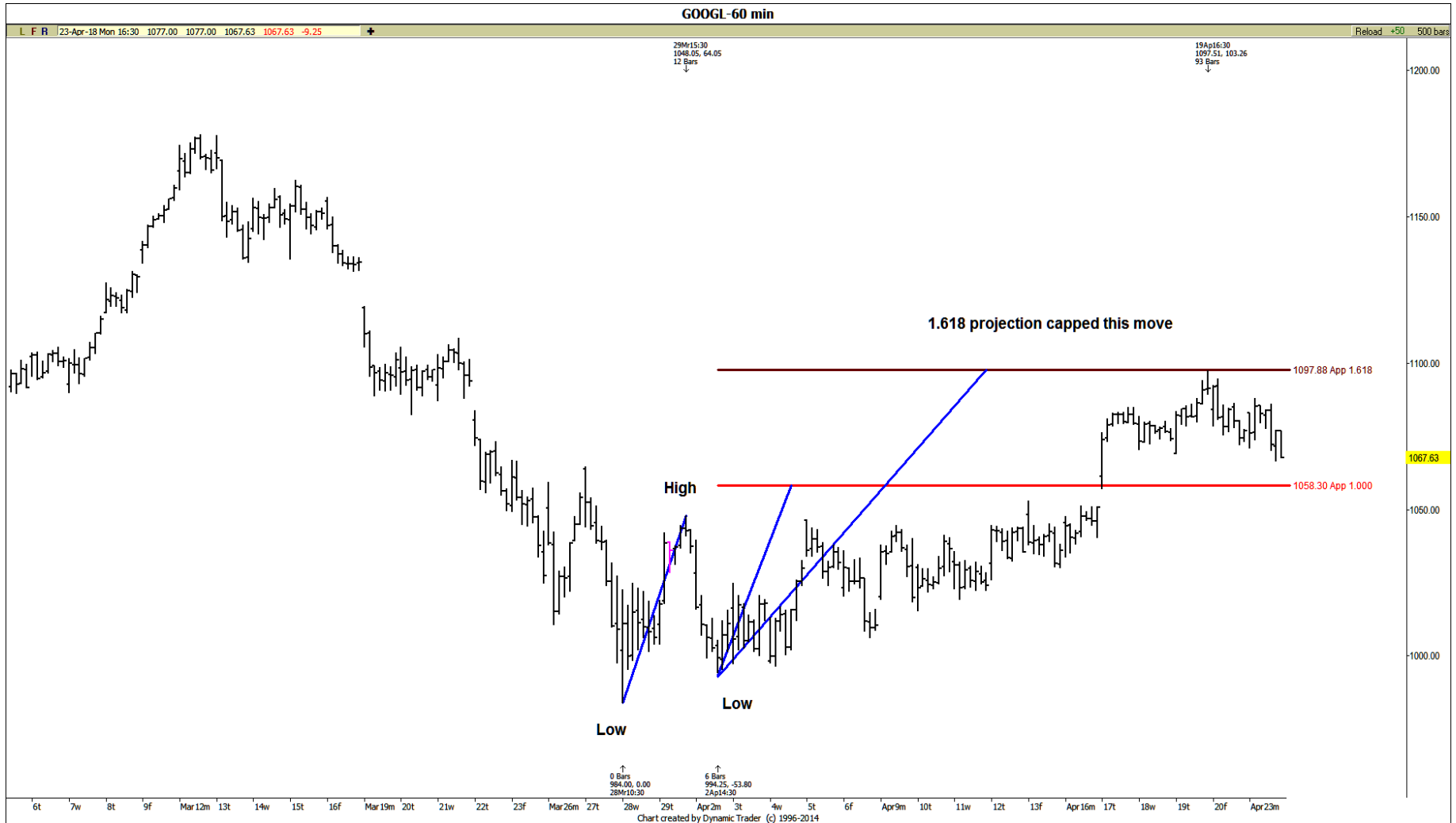
CL G18-D

L F R Mon 22-Jan-2018 63.61 64.14 63.17 63.49 0.12 + Reload +50 488 bars

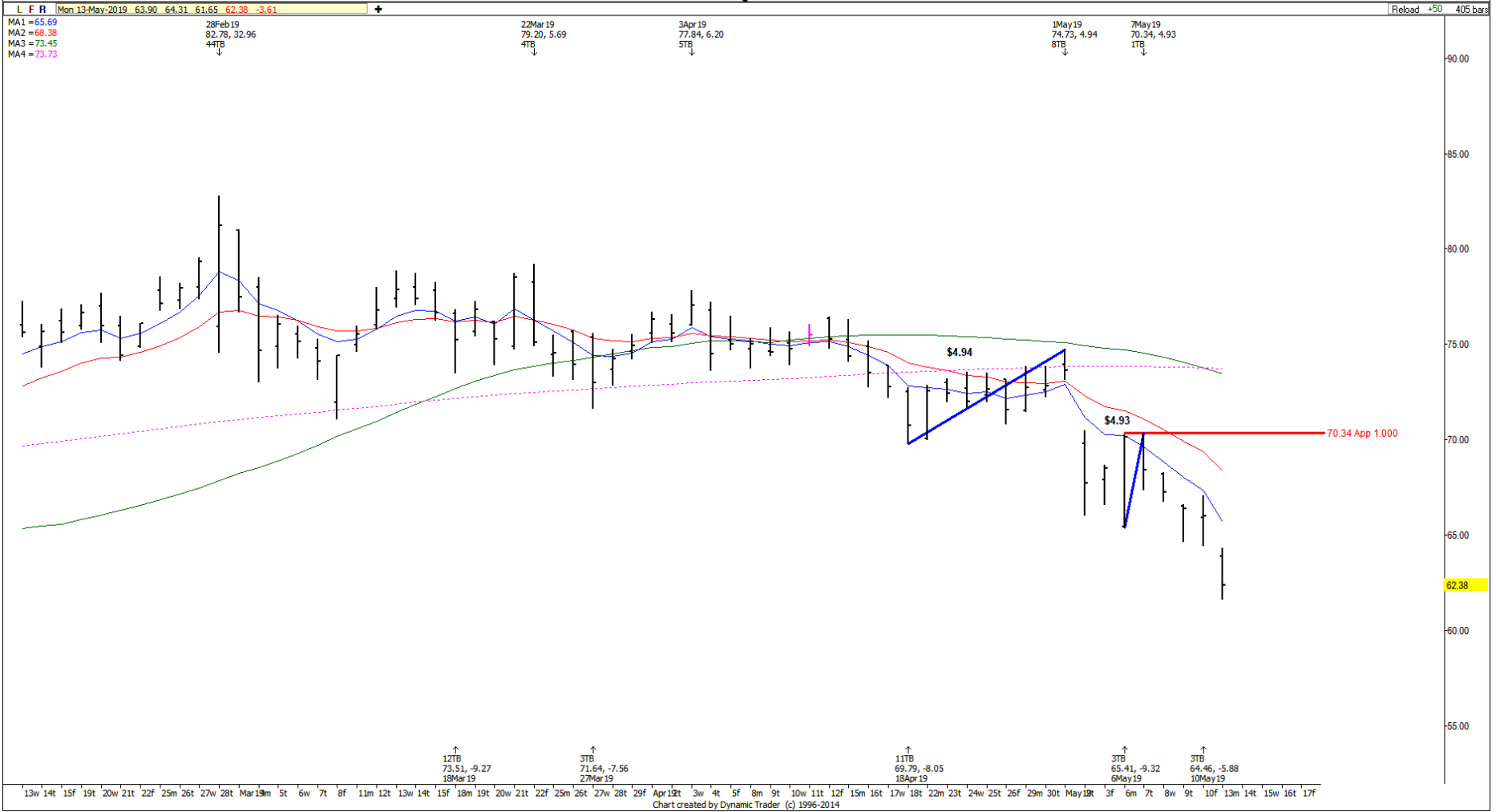
MA1 = 63.58 5Jul17 1Aug17 28Sep17 8Nov17 24Nov17
 MA2 = 62.82 48.55 0.00 50.83 5.78 53.25 5.99 58.27 8.35 58.99 3.84
 MA3 = 59.09 0TB 16TB 29TB 22TB 7TB
 MA4 = 52.27







SQ-D

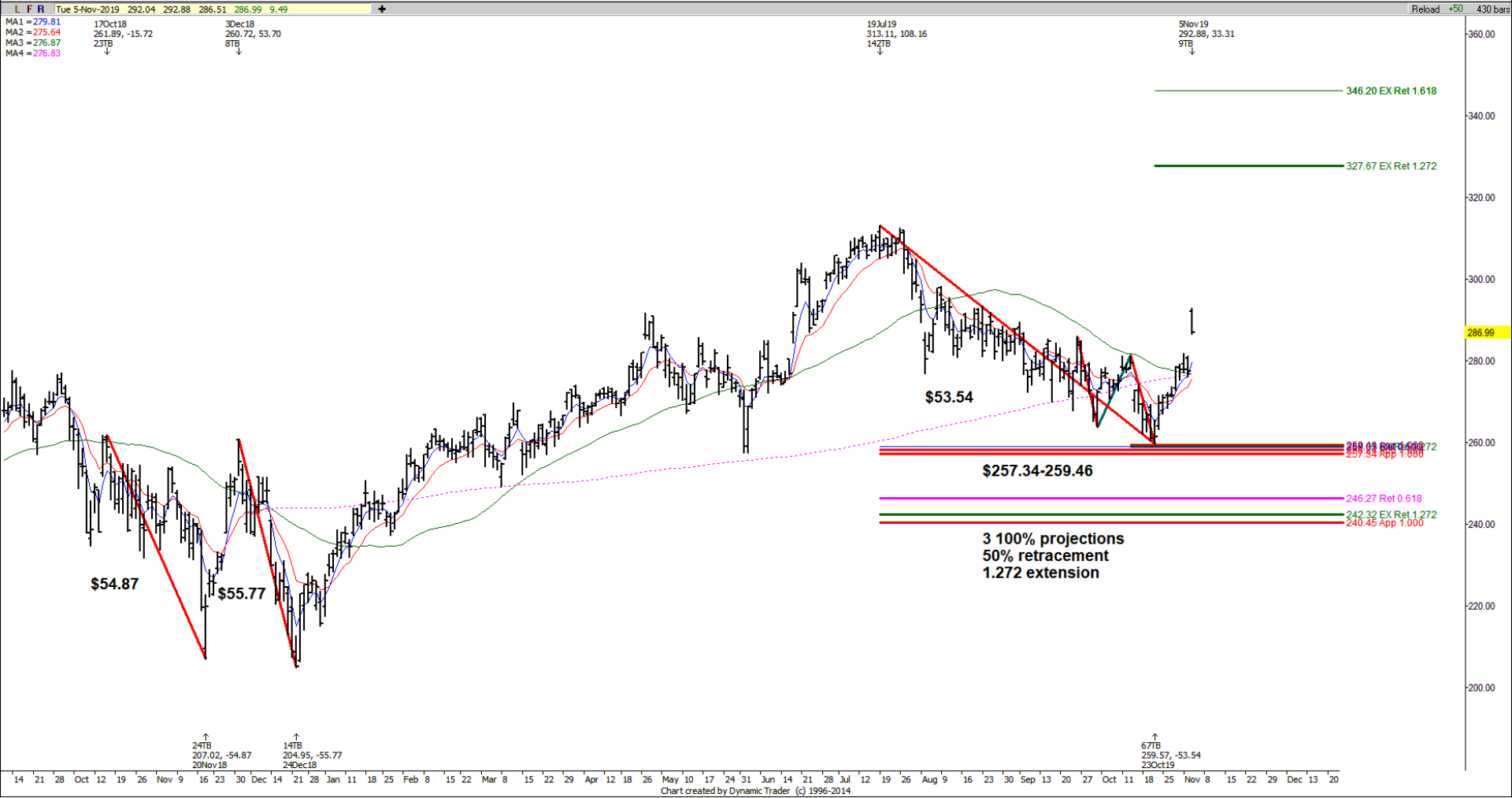


My most powerful trade setup is called a

Fibonacci PRICE Cluster

Definition: the coincidence of at least 3 Fibonacci price relationships that come together within a relatively tight range.

ADBE-D



Now how do you **trade** this??

First we need what I call a **TRIGGER** to tell us it is worth placing a bet against this **price cluster zone!!**

For this we go down to a lower time frame chart!

Formula to make money with my setups: Setup + trigger = trade entry then manage (NO trigger = no trade)

Identify your setup:

price cluster setup (3 or more Fibonacci price relationships)

symmetry setup (single symmetry projection or more in the direction of the trend)

two-step setup (3 or more Fibonacci price relationships within a two-step pattern formation)

If price tests and RESPECTS the setup zone, for A TRIGGER GO TO A LOWER TIME FRAME CHART for an entry as it will signal an entry closer to where your RISK is defined!

Swing Trade Setup Time Frames

Weekly, Daily, 120 or 30-minute trade setups can be used for swing trades

Trigger time frames:

15- minute for aggressive entry (will get stopped out more often)

30- minute for regular entry (won't get stopped as much as the 15-minute chart)

Buy Trigger for a Swing Trade Entry:

8 ema crosses above the 34 ema AND a prior swing high is taken out

Sell Trigger for a Swing Trade Entry:

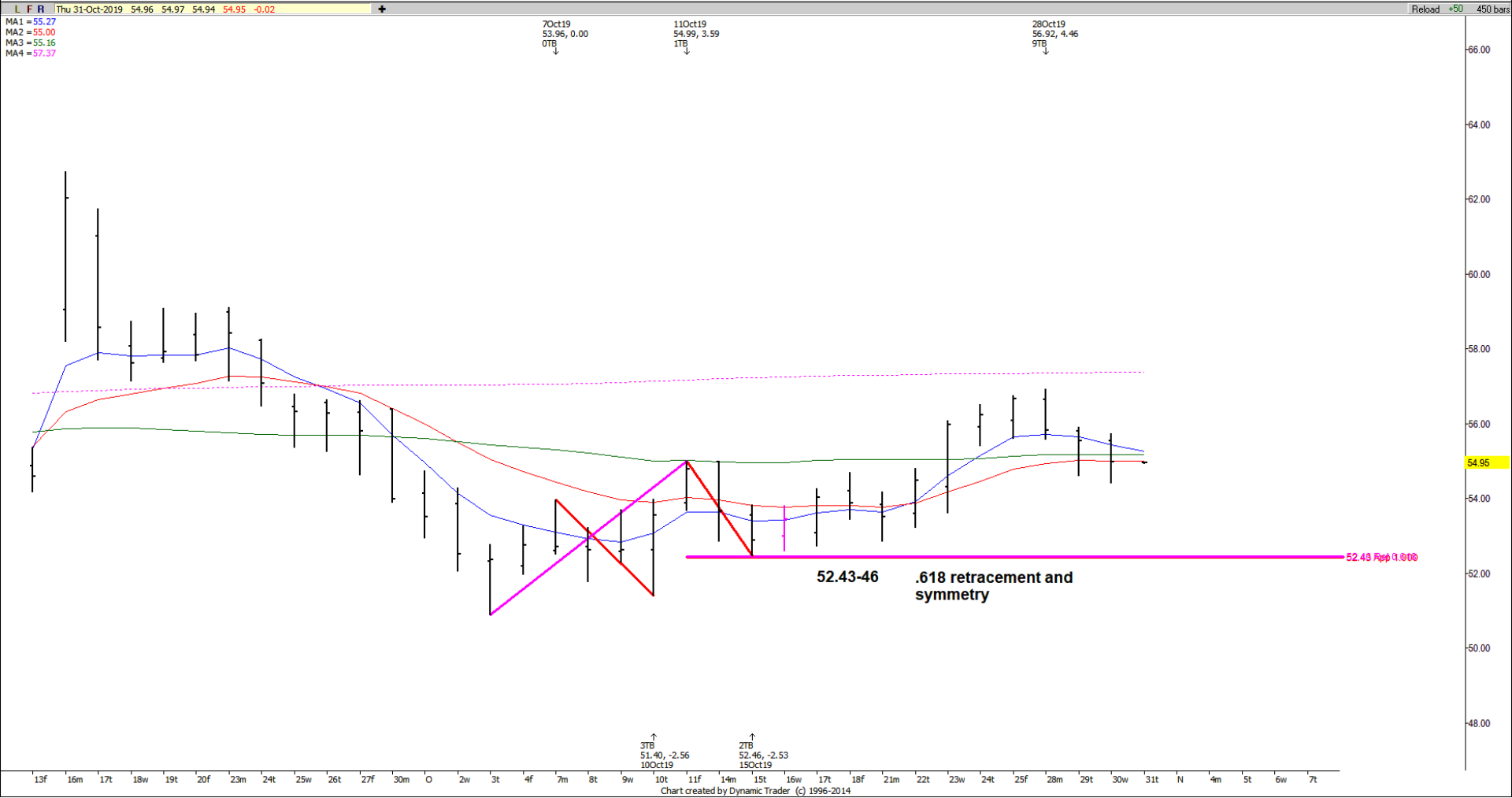
8 ema crosses below the 34 ema AND a prior swing low is taken out

*****Either take the initial trigger or the next pullback after the trigger*** If you are NOT comfortable with the risk, then don't take the trade!!!*****

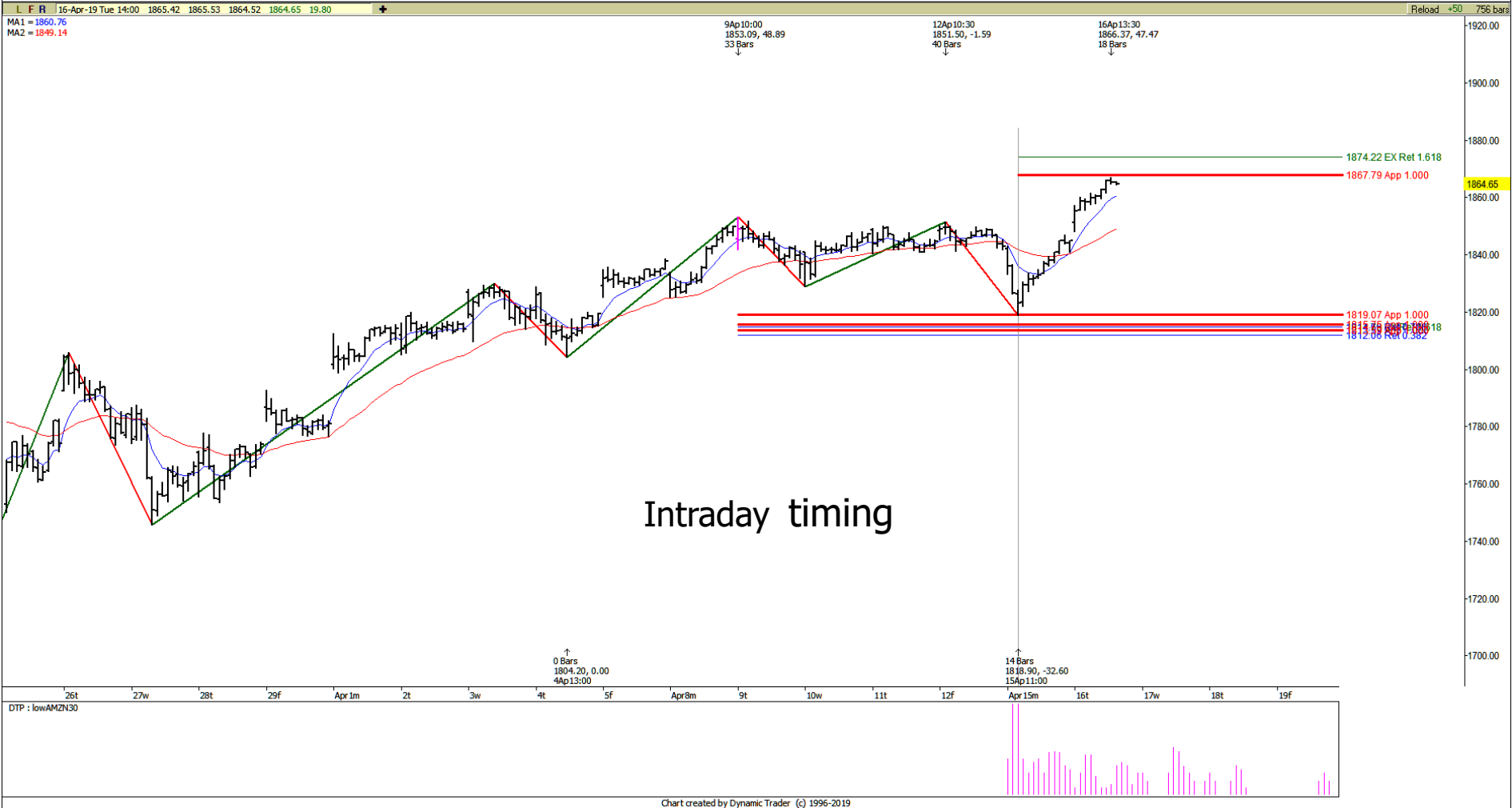
AAPL-D



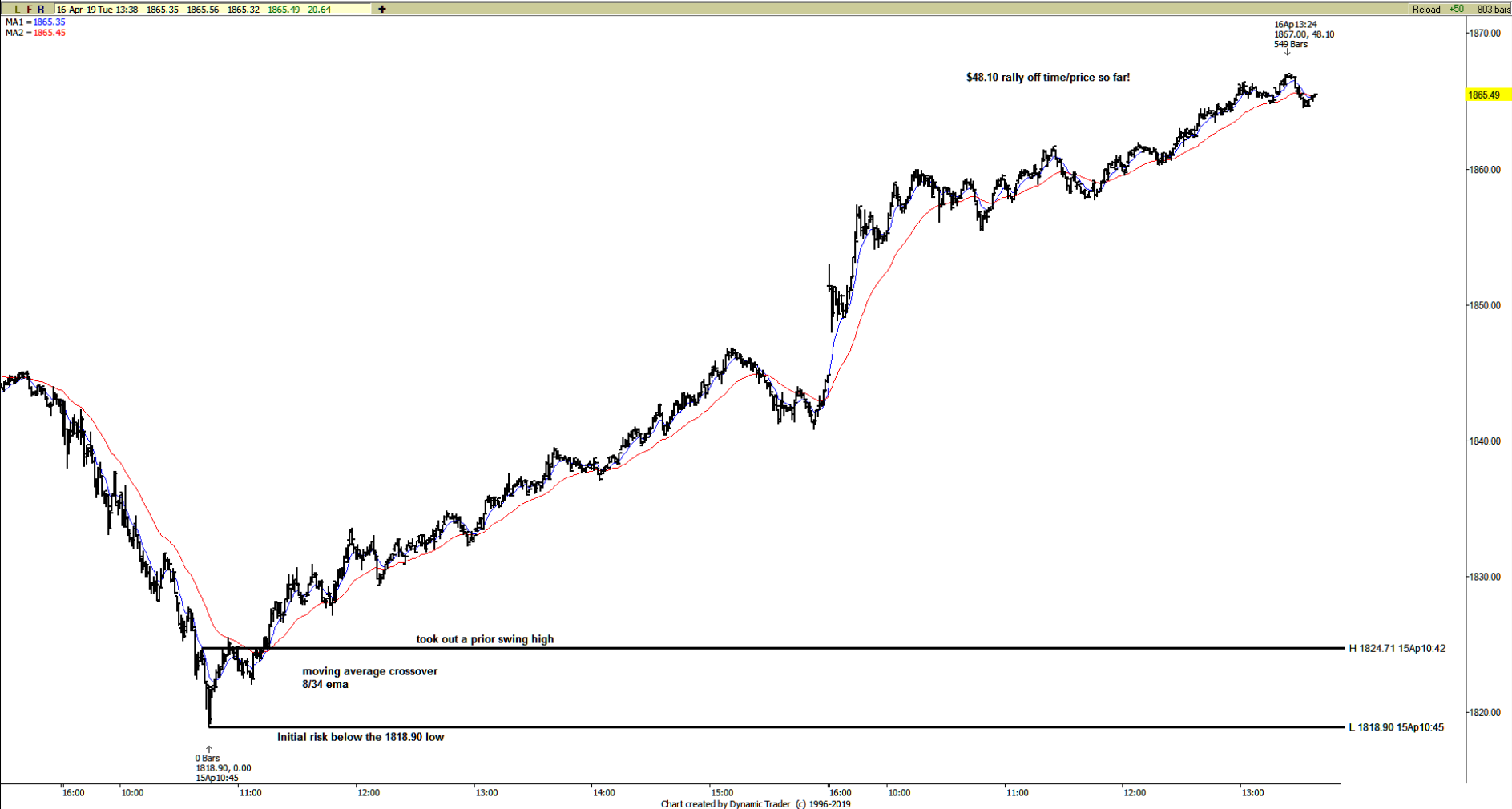
CL Z19-D



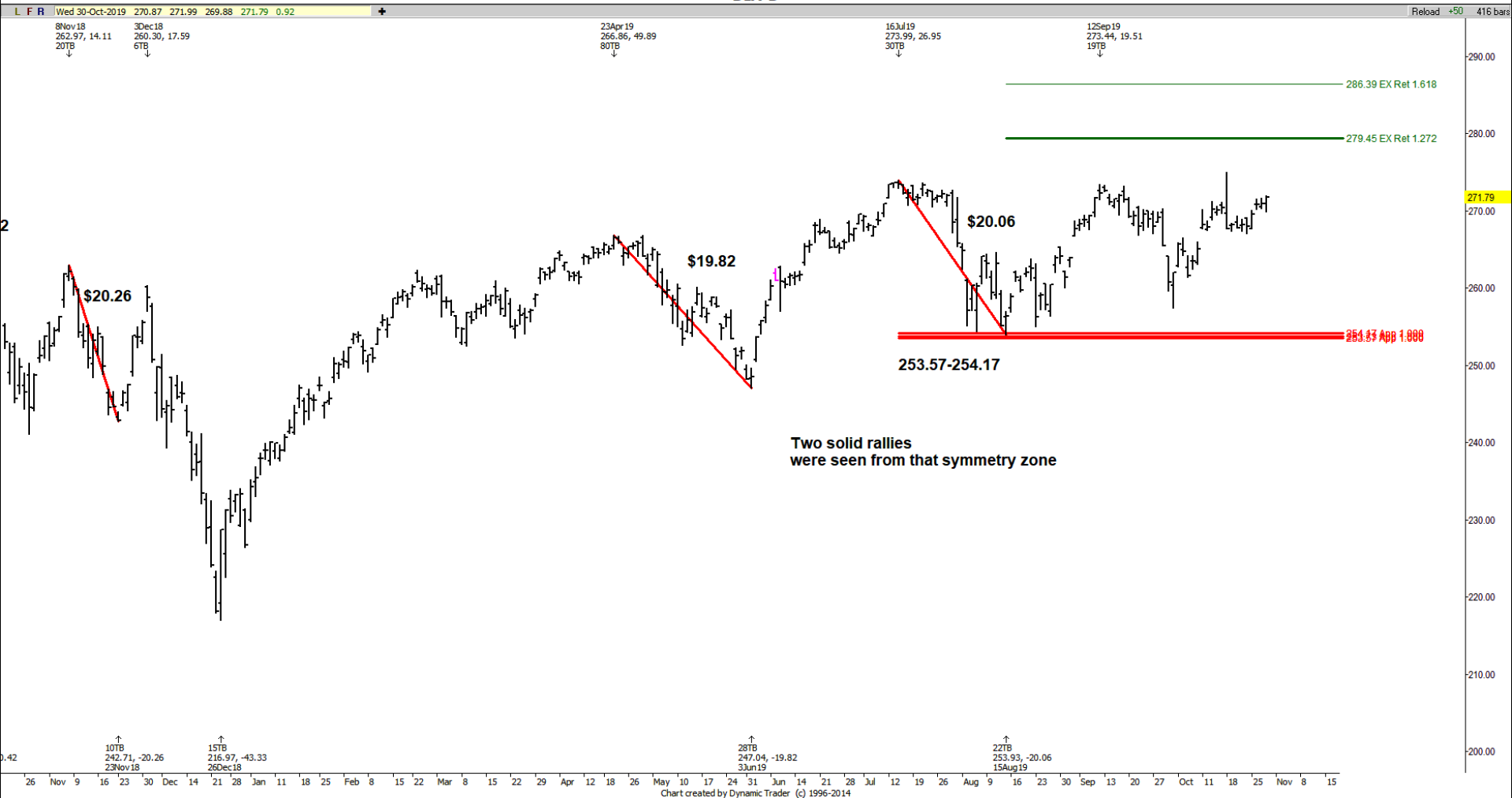
AMZN-30 min



AMZN-1 min



DIA-D



DIS-W



DIS-W

L F R Fri 22-Nov-2019 144.75 149.48 143.69 147.62 2.95 +

Reload +50 500 bars

MA1 = 140.84
MA2 = 137.22
MA3 = 128.14
MA4 = 110.14

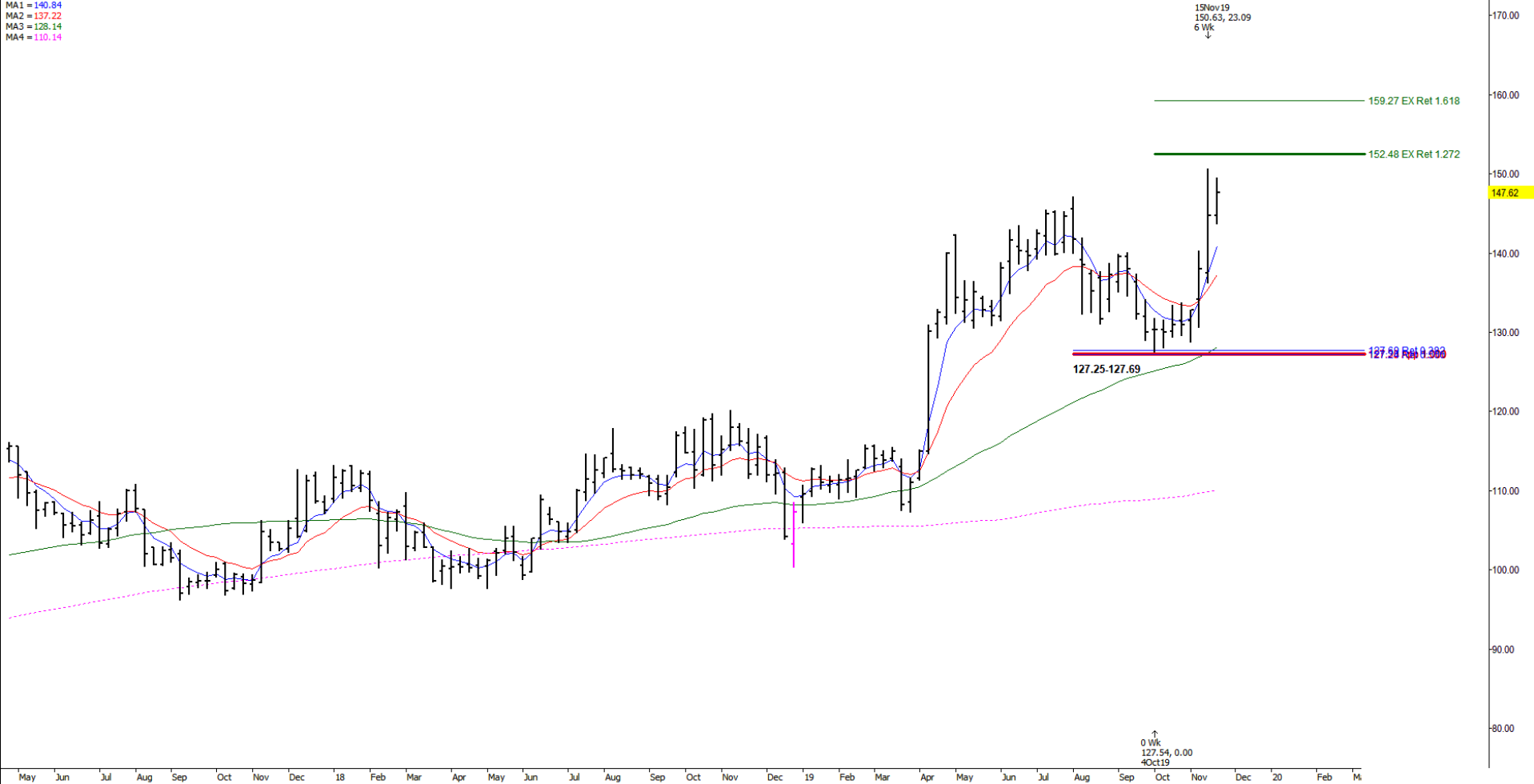
15 Nov 19
150.63, 23.09
6 Wk
↓

159.27 EX Ret 1.618

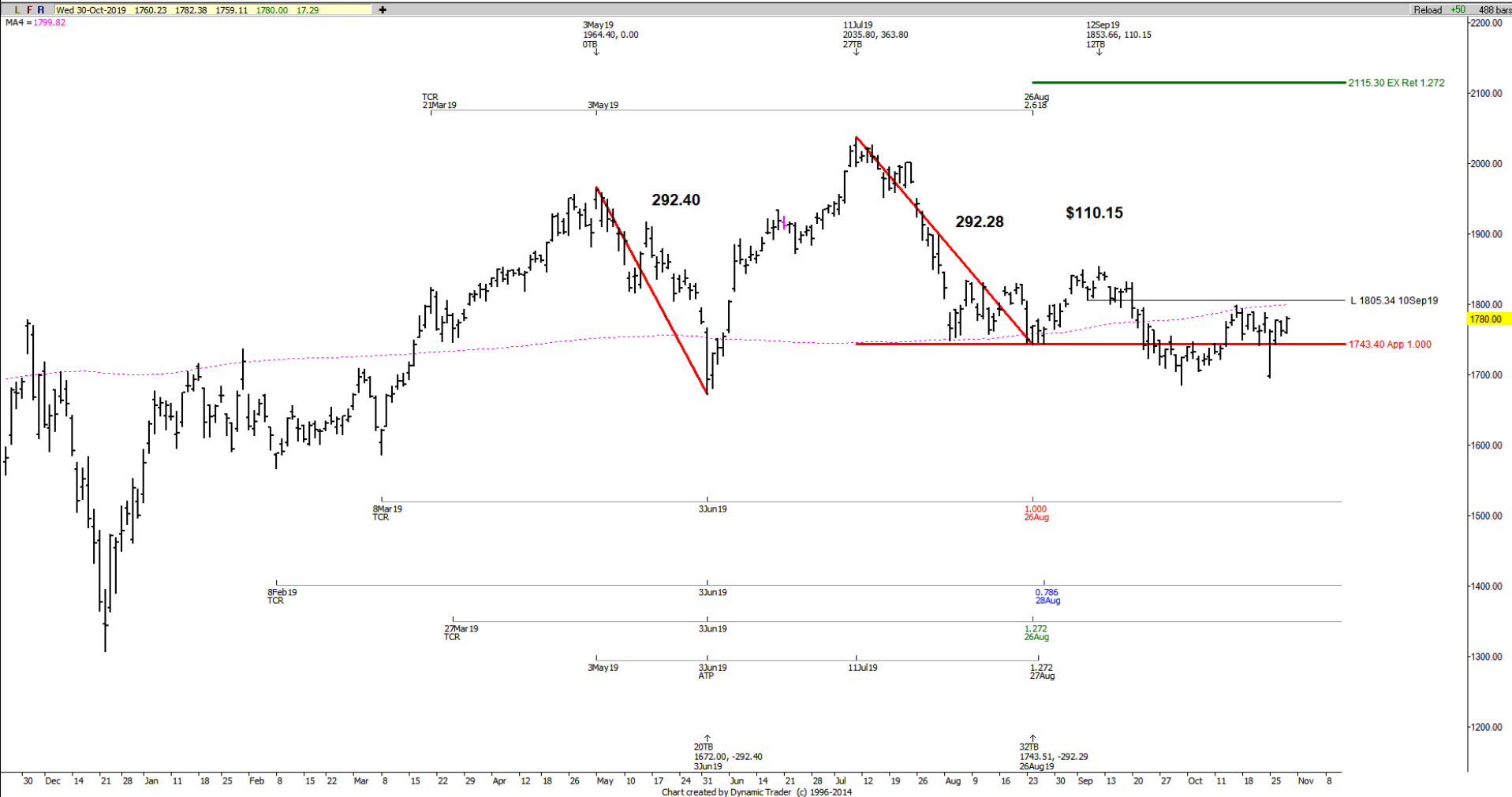
152.48 EX Ret 1.272

127.25-127.69 127.98 Ret 0.388

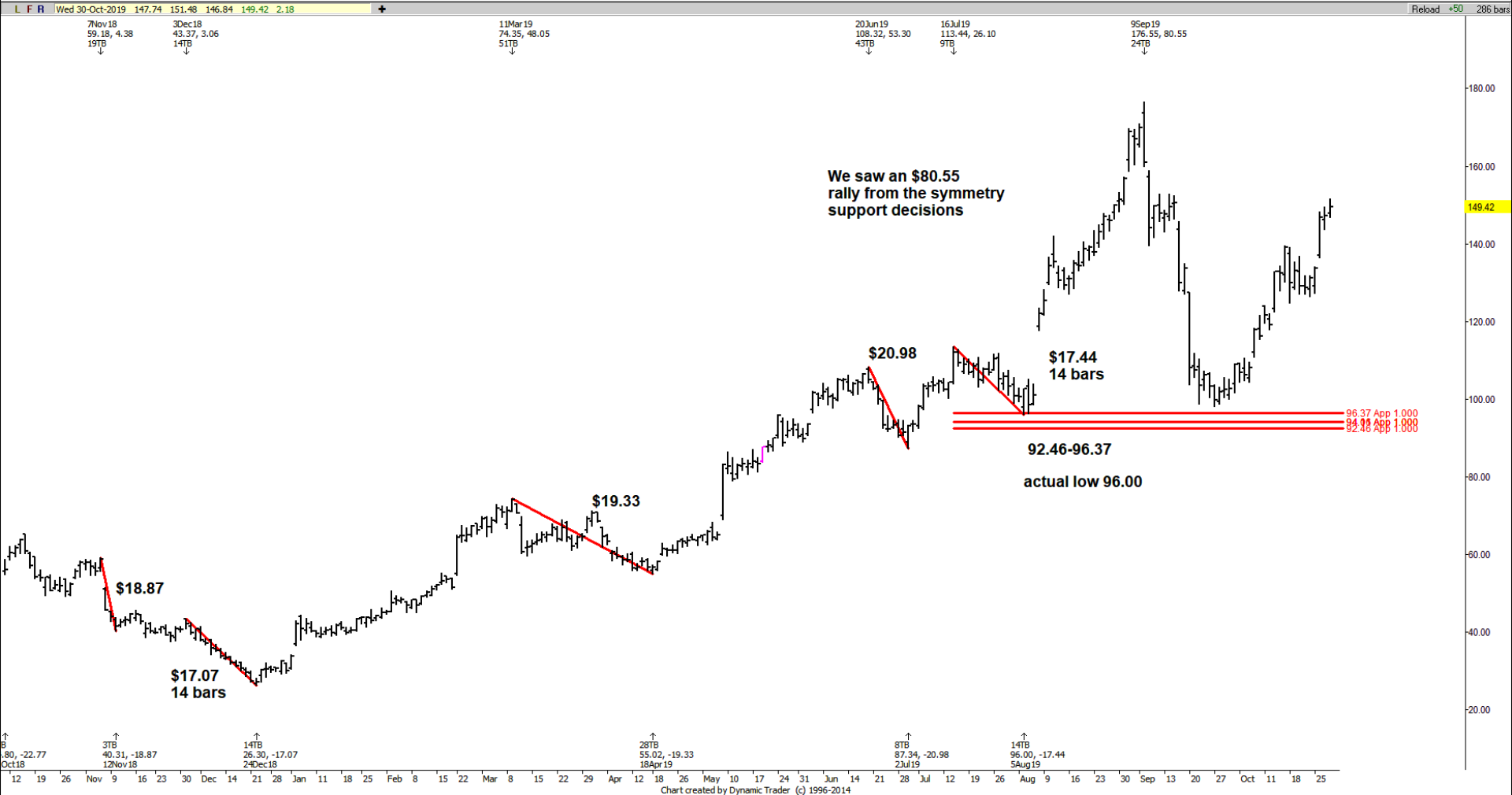
↑
0 Wk
127.54, 0.00
4 Oct 19



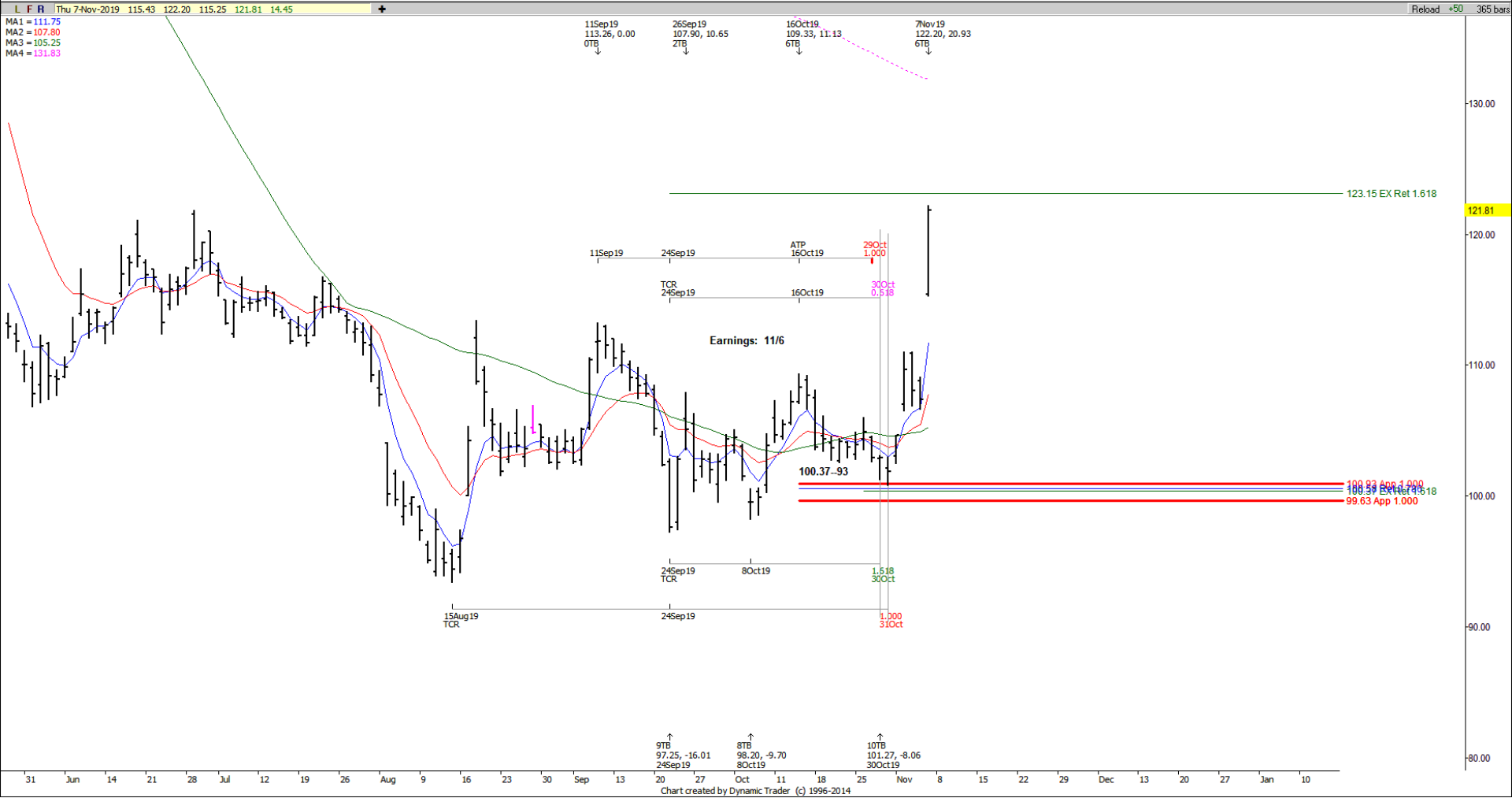
AMZN-D



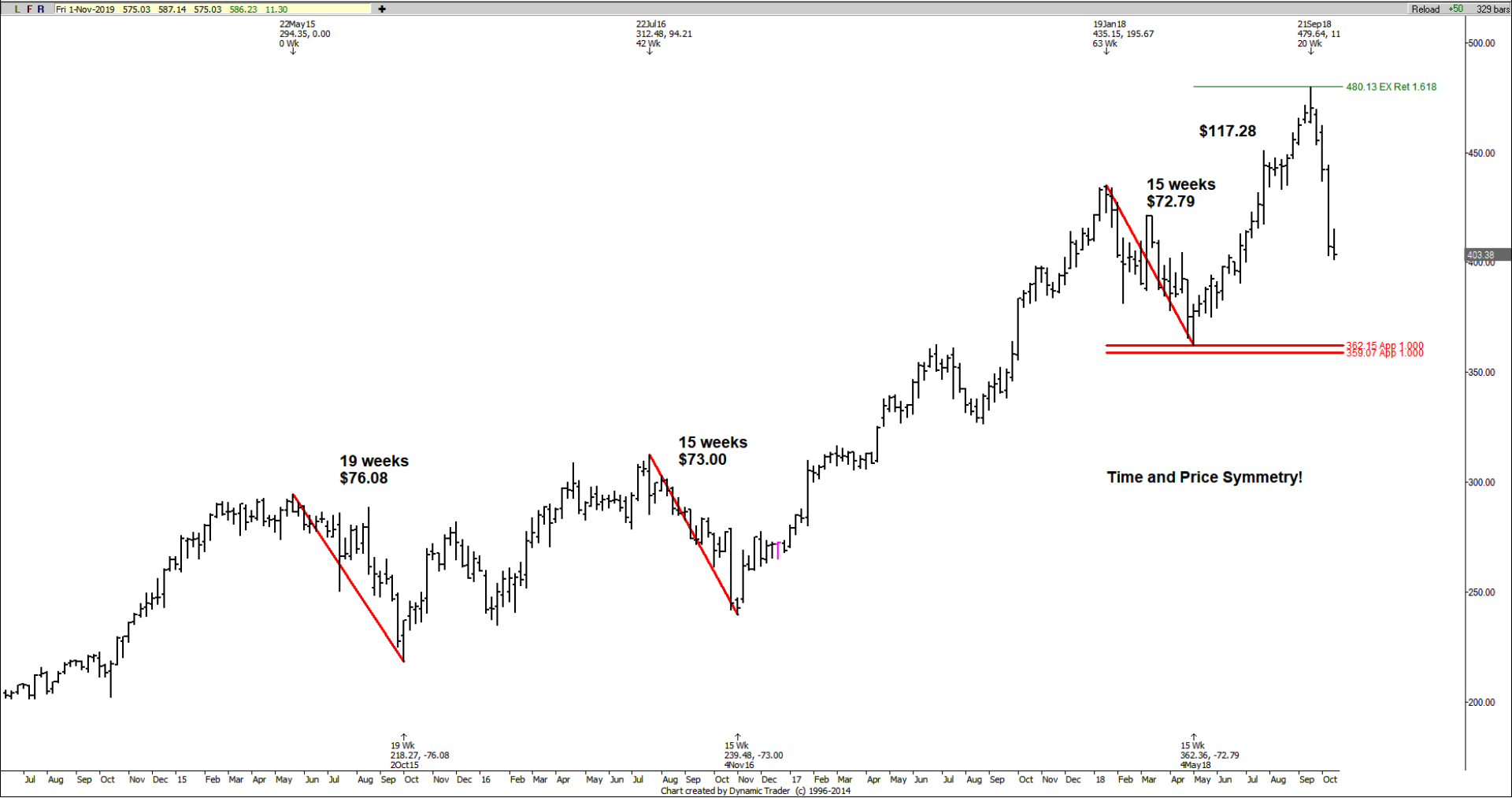
ROKU-D



BIDU-D



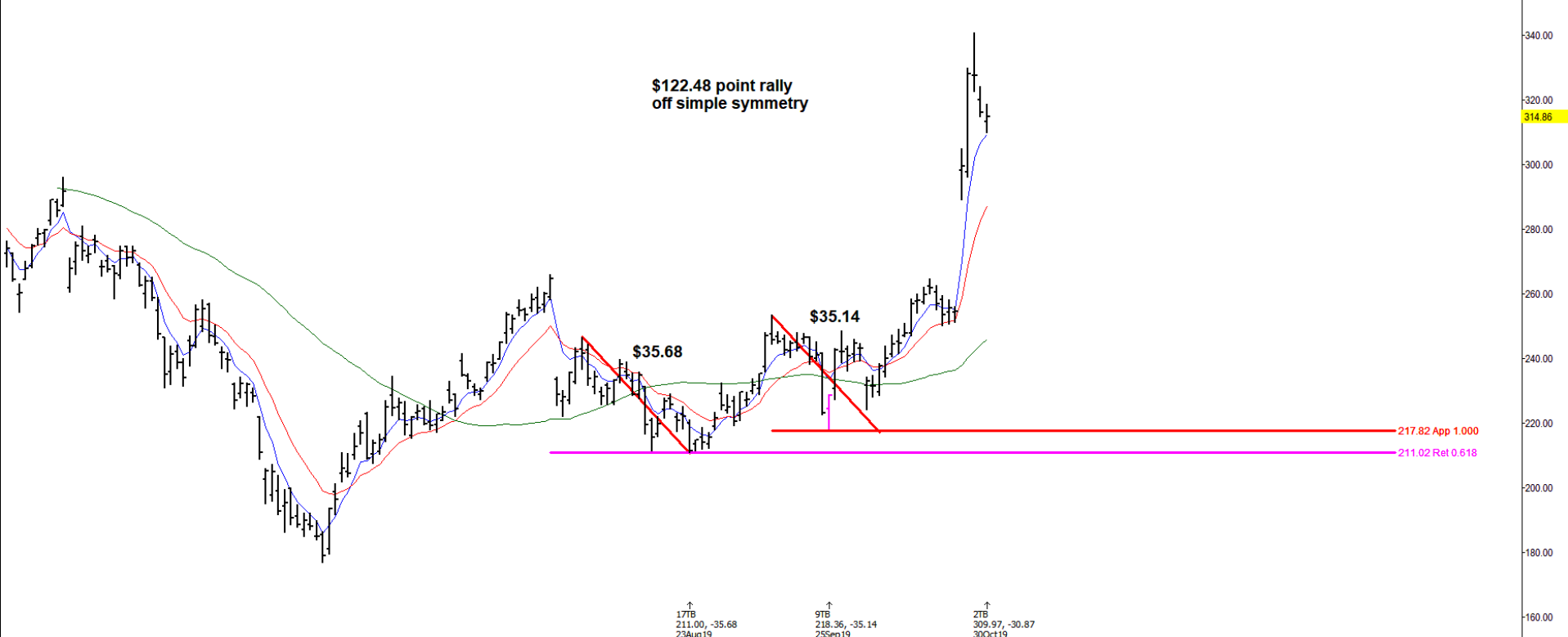
SHW-W



TSLA-D

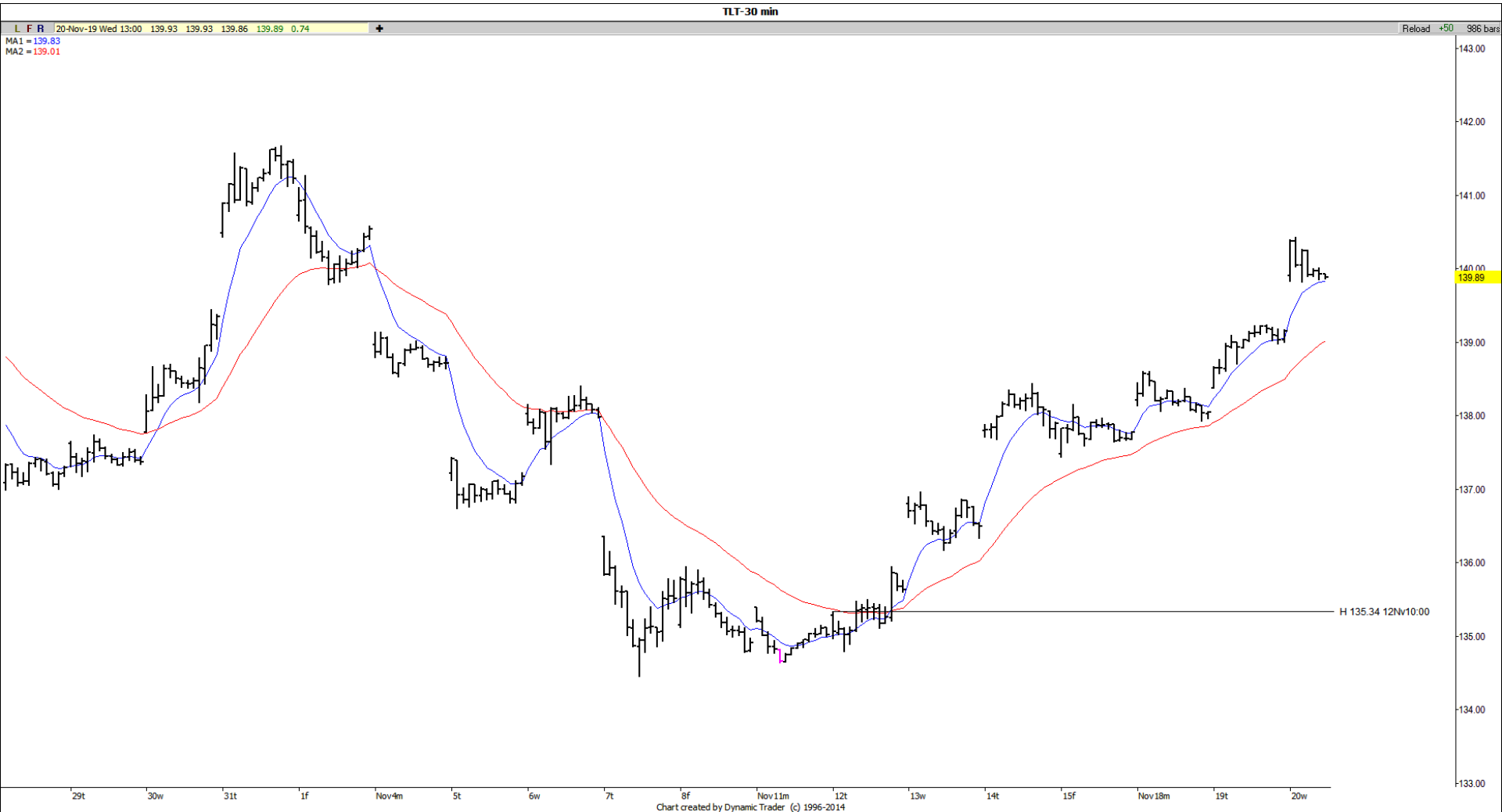
L F R Wed 30-Oct-2019 313.35 318.79 309.97 314.86 -1.36 + Reload +50 197 bars

MA1 = 309.54 31Jul19 246.68, 0.00 12Sep19 253.50, 42.50 28Oct19 340.84, 122.48
 MA2 = 287.34 OTB ↓ 13TB ↓ 23TB ↓
 MA3 = 246.05
 MA4 =



DTP : HighTSLA10/25-28

Chart created by Dynamic Trader (c) 1996-2014



TLT-W



CL F20-5 min

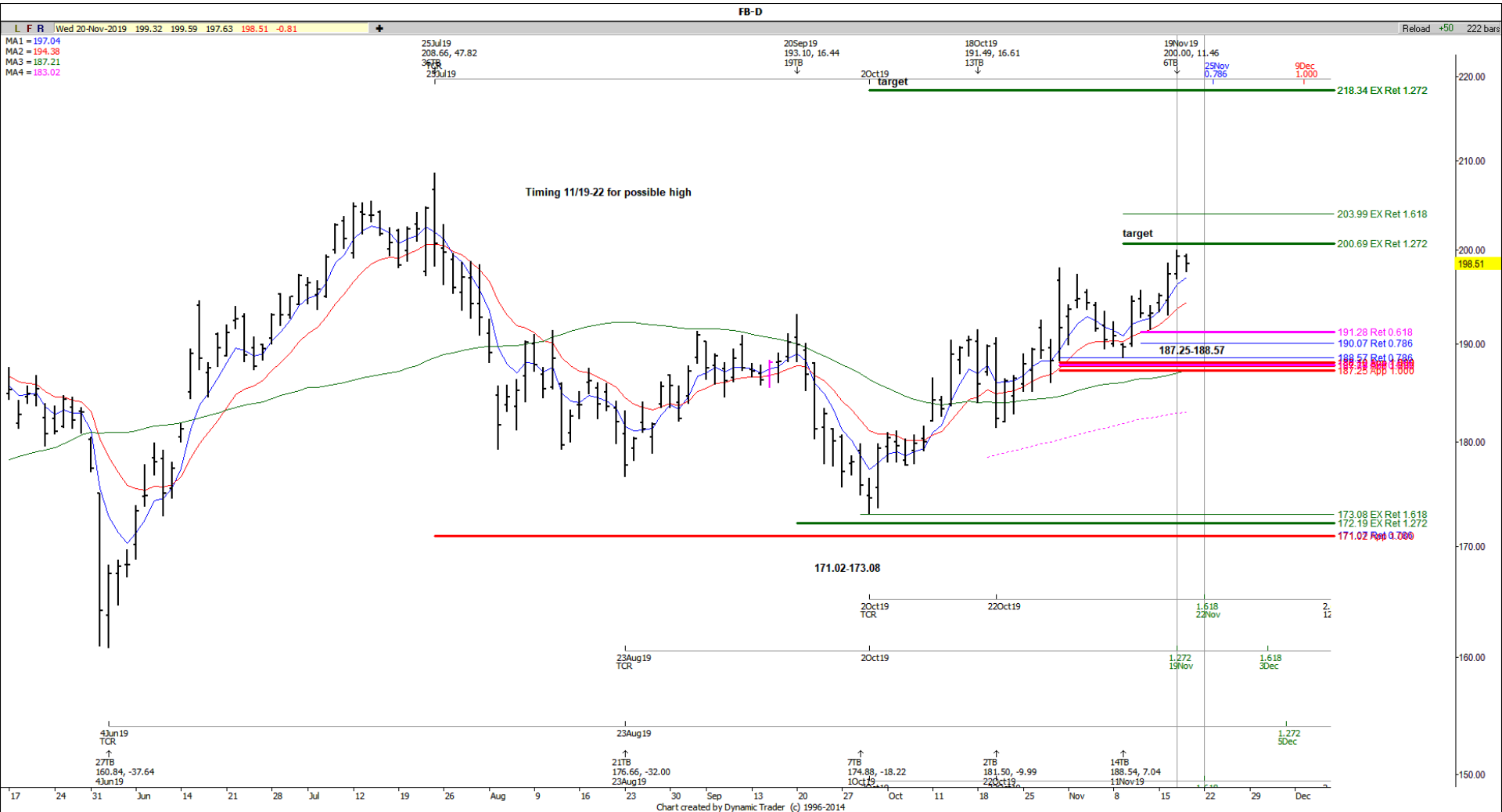
L F R 20-Nov-19 Wed 12:45 57.32 57.34 57.32 57.34 1.96 +
MA1 = 57.28
MA2 = 56.79

Reload +50 501 bars

20Nov7:00 20Nov9:30
55.80, 0.00 55.94, 0.40
0 Bars 21 Bars
↓ ↓



Chart created by Dynamic Trader (c) 1996-2014





TSLA-30 min

L F R 20-Nov-19 Wed 13:00 354.55 355.47 354.17 355.14 -4.38 +
MA1 = 355.30
MA2 = 354.03

Reload +50 1038 bar

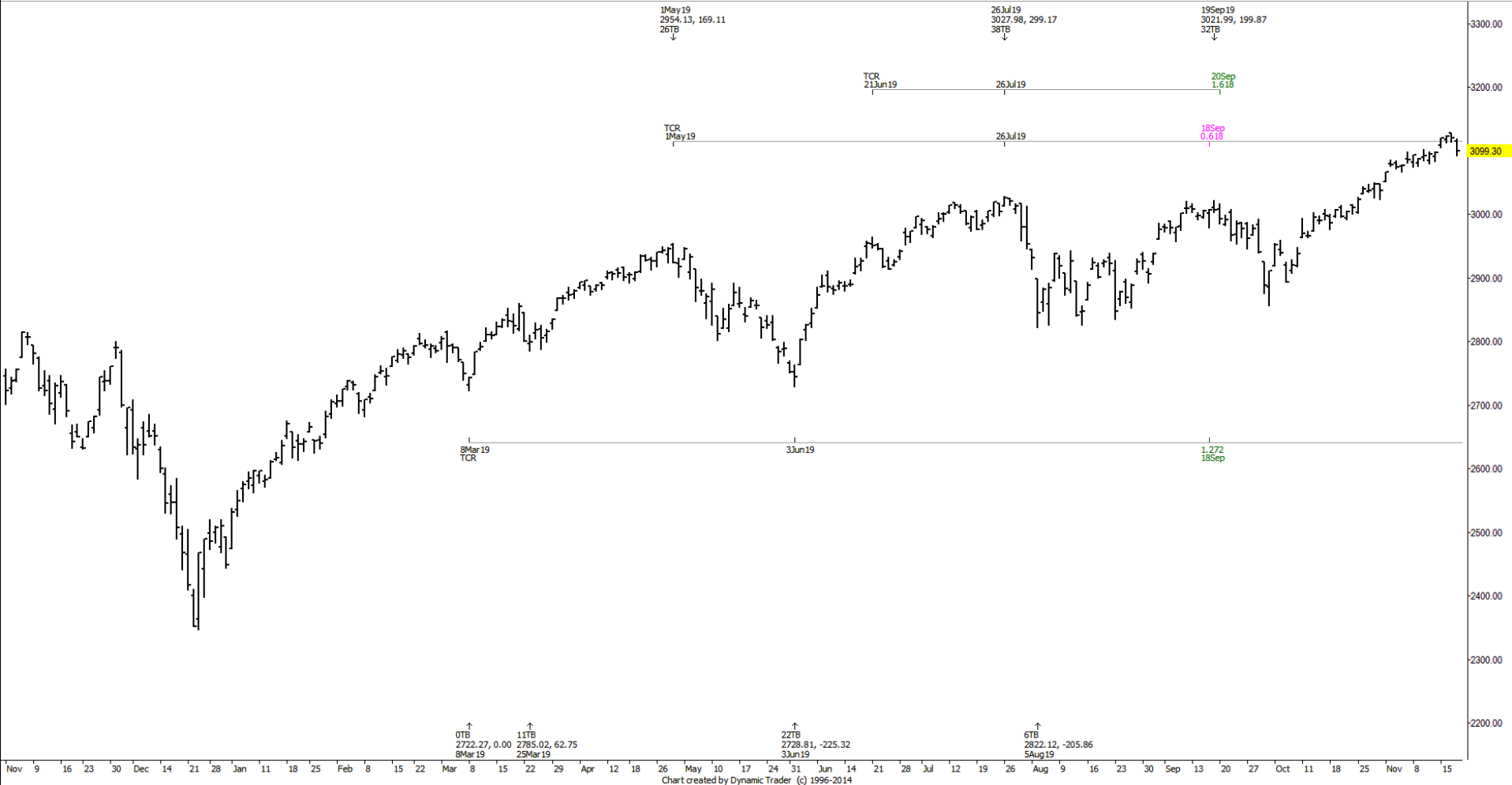


Chart created by Dynamic Trader (c) 1996-2014

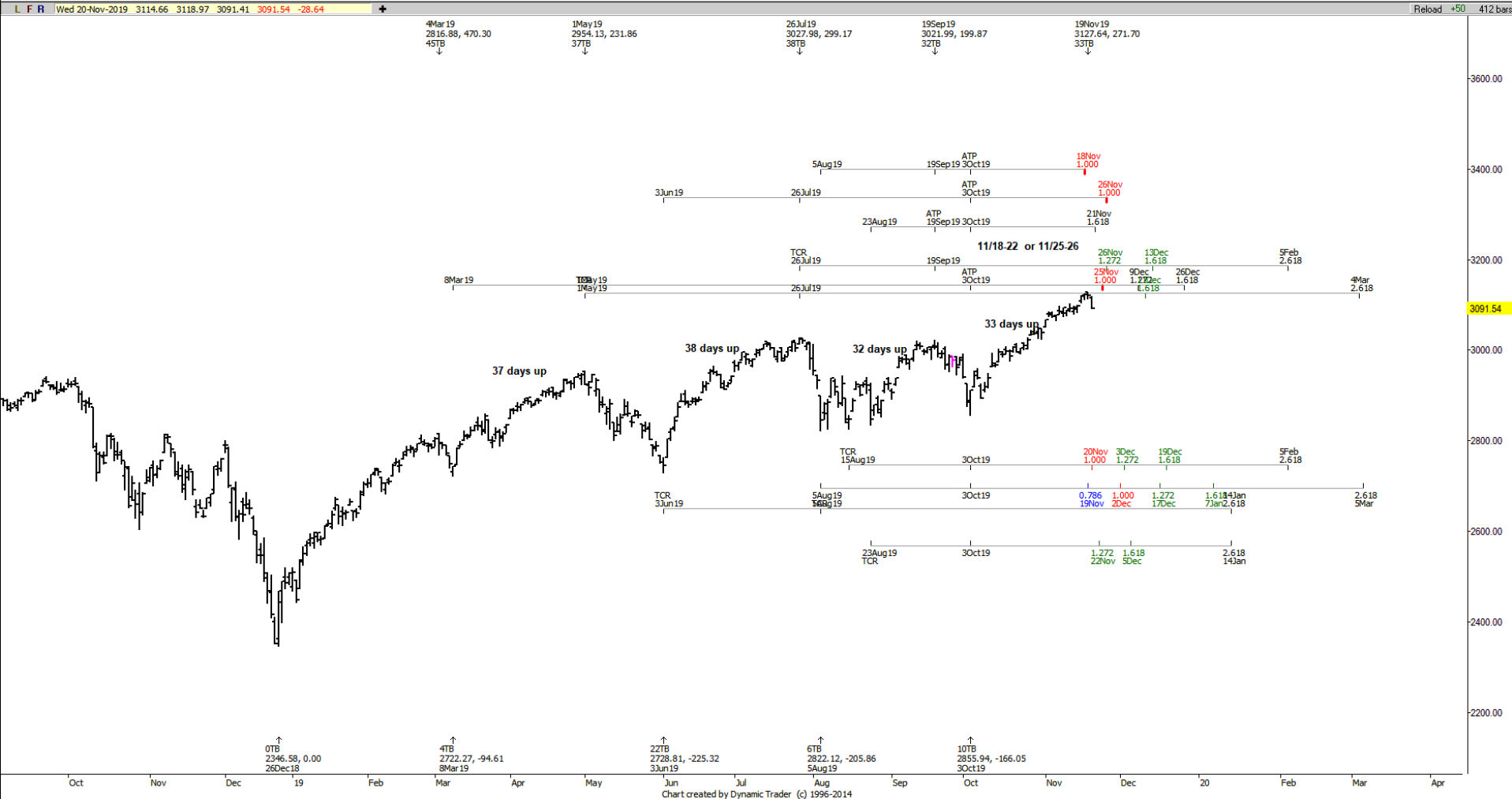


\$SPX-D

L F R Wed 20-Nov-2019 3114.66 3118.97 3091.41 3099.30 -20.88 + Reload +50 496 bars



\$SPX-D



ES Z19-120 min



