

Accu-Tech[®]

Essential **S**upport **P**roducts

The EZ-Path® System

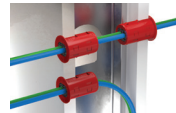
The World's Most Advanced Cable Firestopping System

- EZD22** Series 22 - Fire-Rated Pathway Kit
- EZD33FWS** Series 33 - Fire-Rated Pathway Device
- EZDP33FWS** Series 33 - Square Kit - Device with square wall plate pack
- EZDP133CWK** Series 33 - Circular Kit - Device with circular wall plate pack
- EZD33E** Series 33 - Extension Module
- EZDP133FK** Series 33 - Kick in Kit - Device with kick-in plate pack
- EZDP233GK** Series 33 - Two-Gang Kit - Two (2) Devices with 2-gang plate pack
- EZD44S** Series 44 - Fire Rated Pathway Device
- EZDP44S** Series 44 - Fire Rated Pathway Kit - Device with single wall plate pack
- EZD44ES** Series 44+ Extension Module **NEW**
- EZRCM44** Radius Control Module **NEW**



Ready® Firestop Grommet

- RFG1** Two-piece split cable grommet for up to 0.27 in. O.D.
- RFG2** Two-piece split cable grommet for up to 0.53 in. O.D.



SSB Intumescent Firestop Pillows

- SSB14** SSB Firestop Pillows 1" x 4" x 9"
- SSB24** SSB Firestop Pillows 2" x 4" x 9"
- SSB26** SSB Firestop Pillows 2" x 6" x 9"
- SSB36** SSB Firestop Pillows 3" x 6" x 9"



Intumescent Putty and Sealant

- SSP** Intumescent Firestop Putty
- SSS100** Triple S Intumescent Sealant 10.1 ounce Tube



SpecSeal® Ready Sleeve™

- FS100** 1" sleeve, escutcheon plates, gaskets, and putty
- FS200** 2" sleeve, escutcheon plates, gaskets, and putty
- FS400** 4" sleeve, escutcheon plates, gaskets, and putty



Surge Protection Solutions

- CAT6A-LAN** 4-pair Cat 6A UTP and Outside Plant Cables 110 term
- CAT6-LAN** 4-pair Cat 6 UTP and Outside Plant Cables 110 term
- CAT5-LAN** 4-pair Cat 5e UTP and Outside Plant Cables 110 term



- WP400P/3000** 400# 1/4" Mule Tape
- WP1250P/3000** 1250# 1/2" Mule Tape
- WP1800P/3000** 1800# 3/8" Mule Tape



CAT 6 Protector Packs- 110 Termination

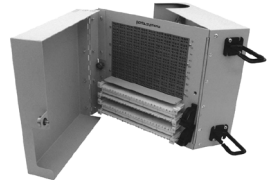
- 606-18** Cat 6 Protector Pack 110 Termination 18V
- 606-27** Cat 6 Protector Pack 110 Termination 27V
- 606-65** Cat 6 Protector Pack 110 Termination 65V



Building Entrance Protector- 110 Termination

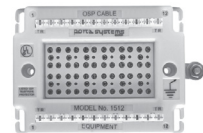
- 1506** 6 PAIR 230V Gas Tube (3.75" x 4" x 3.3")
- 1512** 12 PAIR 230V Gas Tube (3.75" x 5.6" x 3.3")
- 24025-110-M110C** 25 pair 110 in, 110 out w/cover BET*
- 24050-110-M110C** 50 pair 110 in, 110 out w/cover BET*
- 24100-110-M110C** 100 pair 110 in, 110 out w/cover BET*

*Protector Modules sold separately



Building Entrance Protector- 66 Termination

- 506GT** 6 PAIR No Modules (4" x 4.6" x 3.3")
- 512GT** 12 PAIR No Modules (3.75" x 5.6" x 3.3")
- 525GT** 25 PAIR No Modules (10.0" x 3.4" x 3.5")



Building Entrance Terminals (Indoor) Premium Quality - Heavy Duty

- 1880ENA1/NSC-6(e)** 6 pair 110 connector input and output (Enhanced)
- 1880ENA1/NSC-12(e)** 12 pair 110 connector input and output (Enhanced)
- 1880ENA1/NSC-25(e)** 25 pair 110 connector input and output (Enhanced)
- 1880ENA1/NSC-50** 50 pair 110 connector input and output
- 1880ENA1/NSC-100** 100 pair 110 connector input and output
- 2606QC/QC(e)** 6 pair IDC 66 Style input and output (Enhanced)
- 2612QC/QC(e)** 12 pair IDC 66 Style input and output (Enhanced)
- 2625QC/QC(e)** 25 pair IDC 66 Style input and output (Enhanced)
- 2650QC/QC** 50 pair IDC 66 Style input and output
- 26100QC/QC** 100 pair IDC 66 Style input and output
- 1880ECA1-25** 25 pair 110 connector input and output
- 1880ECA1-50** 50 pair 110 connector input and output
- 1880ECA1-100** 100 pair 110 connector input and output
- 1890ECT1-25** 25 pair IDC 66 Style input and output
- 1890ECT1-50** 50 pair IDC 66 Style input and output
- 1890ECT1-100** 100 pair IDC 66 Style input and output



Surge Protection Modules 3 Element Gas - Analog Series

- 3B1E** 350VDC gold black
- 4B1E** 350VDC (with PTC) gold black



Ultimate™ Snap-N-Seal® “F” Series Compression Connector

Designed to fit a range of drop cables including 60% braid, tri-shield and quad shield

Catalog#	Post ID	Sleeve ID	Sleeve Color	Tool*
SNS1P6U	.191	.293	Red	1, 2 or 3
SNS1P59U	.154	.265	Gray	1, 2 or 3

*Tool (1) CST596596 or CST596711 (2) SNSUTL or SNSUNI (3) IT1000



Classic Snap-N-Seal® F Male Compression for Series 11 Cable

Catalog#	Post ID	Sleeve ID	Sleeve Color	Tool*
SNS1P11	.295	.400	Black	1, 2 or 3

*Tool (1) CST596596 or CST596711 (2) SNSUTL or SNSUNI (3) IT1000

Classic Snap-N-Seal® F Male Compression for Series 6 Plenum Cable

Catalog#	Post ID	Sleeve ID	Sleeve Color	Tool*
SNS6PLA	.154	.253	Orange	1 or 2

*Tool (1) CST596596 or CST596711 (2) SNSUTL or SNSUNI

Snap-N-Seal® Cable Preparation Tools

- CST596596** Snap-N-Seal Cable Prep Tool for Series 59 & 6 Coaxial Cable
- CST596711** Snap-N-Seal Cable Prep Tool with 2 Blade Modules for Series 59/6/7 & 11
- SNS-UNI** Snap-N-Seal Universal Installation Tool
- SNS-UTL** Snap-N-Seal Universal Installation Tool
- IT1000** Combo Cable Preparation and Snap-N-Seal Connector Installation Tool



Double Bubble™

Compression connectors for structured wiring, security cameras and other exposed wiring installations

- DB6U** RG6 F-type Double Bubble™ connector
- DB6PL2** RG6 Plenum Size 2 F-type Double Bubble™ connector (Tool Required CPLCRBC-B)

- CPLCRBC-BR** Compression Tool and adapter tips
- DBPSAKIT** Tech Express Tool Kit

(Contains: **CPLCRBC-B** Compression Tool and adapter tips, **PSA59/6** Cable Strip Tool and extra blade cartridge)

- DBSTARTERKIT** ICM DB Starter Kit

(Contains: **CPLCRBC-B** Compression Tool and adapter tips, **PSA59/6** Cable Strip Tool and extra blade cartridge, Plus variety of DB compression connectors)

- FS6U** RG6 Universal F (Green) Connector
- FS6-PL2** RG6 Plenum F-type Size 2 (Green) – Connector



- TL20** 2" Loop Wire hangers
- TL25** 2.5" Loop Wire hangers
- TL50** 5" Loop Wire hangers
- EMT100** 1" White Insulating Bushing for Electrical Metal Tubing
- EMT200** 2" White Insulating Bushing for Electrical Metal Tubing
- EMT300** 3" White Insulating Bushing for Electrical Metal Tubing
- EMT400** 4" White Insulating Bushing for Electrical Metal Tubing



The connection you can count on.

Closures

Armadillo® Stainless Kits with Drillable End Plates and Bonding

8000624	4" 50 to 200 pair
8000626	6.5" 200 to 1100 pair
8006320	8" 900 to 2100 pair
8000630	9.5" 1500 to 2700 pair

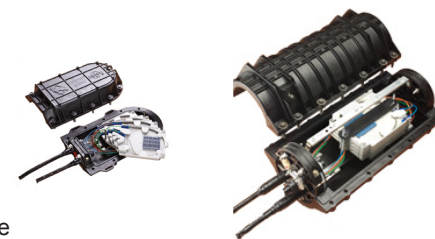


Armadillo® Filling Flange Kit with Drillable End Plates and Bonding

8006366	4" 50 to 200 pair
8006367	6.5" 200 to 1100 pair
8006410	8" 900 to 2100 pair
8006368	9.5" 1500 to 2700 pair

Additional Armadillo® Products

- 80802826 Encapsulant, 8000 grams
- 80802377 C-Cement, 4 oz Can
- 8006560 6" x 22" COYOTE Closure
- 8006561 8.5" x 22" COYOTE Closure
- 8006622 COYOTE PUP Closure Kit for Buffer Tube
- 8006671 COYOTE RUNT Closure Kit
- 8006951 COYOTE In-Line RUNT Closure
- 80806033 12 Count Standard Splice Tray
- 8006944 COYOTE Dome Closure 6.5" x 17"
- 8006877 COYOTE Dome Closure 6.5" x 22"
- 80061055 COYOTE Dome Closure 9.5" x 28"
- 80805514 36-count splice tray for Coyote Dome Closure



Rhino

Industrial Labeling Tools

- 1734521 RHINO™ 6500 Professional Labeling Bundle
- 1734519 RHINO™ 6000 Professional Label Printer
- 1734520 RHINO™ 6000 Hard Case Kit
- 1755749 RHINO™ 5200 Label Printer
- 1756589 RHINO™ 5200 Hard Case Kit
- 15605 RHINO™ 3000 Label Printer
- 18189 RHINO™ 3000 Hard Case Kit
- 18482 White Permanent Polyester Tape 3/8" (18' length)
- 18483 White Permanent Polyester Tape 1/2" (18' length)
- 18484 White Permanent Polyester Tape 3/4" (18' length)
- 1734523 White Permanent Polyester Tape 1" (18' length)
- 18488 White Flexible Nylon Tape 1/2" (11.5' length)
- 18489 White Flexible Nylon Tape 3/4" (11.5' length)
- 1734524 White Flexible Nylon Tape 1" (11.5' length)





3M™ Better Buried Closure Partial Kit for Gravity Pour Encapsulation

- BB2X12-SB/2SC-LHS** 2" x 7" 25 pair
- BB2X24-SB/SC,DC-LHS** 2" x 17" 50 pair
- BB3X24-SB/SC,DC-LHS** 3" x 17" 100 pair
- BB4X24-SB/2SC-LHS** 4" x 17" 200 pair
- BB5X26-SB/SC,DC-LHS** 5" x 19" 300 pair



- 8882-750/F** 3M™ High Gel Re-enterable Encapsulant, 750 grams
- 8882-1500/F** 3M™ High Gel Re-enterable Encapsulant, 1500 grams
- 8882-3000/F** 3M™ High Gel Re-enterable Encapsulant, 3000 grams



- R-3** 3M™ Building Riser Closure K&B Series Kit 3"
- R-5** 3M™ Building Riser Closure K&B Series Kit 5"
- R-7** 3M™ Building Riser Closure K&B Series Kit 7"



- 3M710-SC1-25** 3M™ 710 25pr Modular Splice Connectors encap 26-24awg
- 3M710-SD1-25** 3M™ 710 25pr Modular Splice Connectors dry 26-24awg

- UR-3M** PIC Filled Butt/2 or 3 Conductor 19-26awg
- UR2-3M** PIC Filled Butt/2 or 3 Conductor 19-26awg Solvent Resistant
- UY-3M** PIC Filled Butt Conductor 22-26awg
- UY2-3M** PIC Filled Butt Conductor 19-26awg Solvent Resistant



- 4460** 3M™ Scotchlok™ Shield Connectors
- 4460-D** Downsized version of the 4460 shield bond connector
- 4460-S** Shield Bond Connector with Shoe
- 4462-SN** Shield Bond Connector with Shoe REA



- Closure**
- 2178-S** .20-1.00, 4.7" H 21.8" L 8.5" W
- 2178-SL** .20-1.00, 8.0" H 21.9" L 8.5" W
- 2178-LS** .20-1.00, 8.0" H 21.9" L 8.5" W

3M™ Cable Addition Kit for 2178 series

- 2181-LS** Cable addition kit allows for the addition of 2 cable ports per closure end

3M™ Fiber Optic Accessories

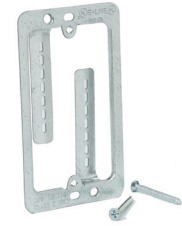
- 2521-F** 3M™ Splice insert that holds 12 single fusion splices in each insert (Used in 2522/2523/2538 trays)
- 2522** 3M™ Small Fiber Splice Organizer Tray
- 2523** 3M™ Large Fiber Splice Organizer Tray
- 2524-F** 3M™ Fiber Splice Organizer Tray
- 2529** 3M™ Fibrolok™ II 2529 Universal Optical Fiber Splice
- 4000-G/TR** Super Mini Splicing Module (GEL)

- 1710-3M** Tartan™ Vinyl Electrical Tape 1710, 3/4 in x 60 ft x .007 in
- 88T-0.75X60** 3/4 in x 60 ft. Scotch® All Weather Telephone Vinyl Plastic Tape 88T



Cover Plate Mounting Brackets

- BB10** Single Gang Bracket
- BB10L** Single Gang Bracket
- BB15** Single Gang Stud Bracket
- BB20L** Double Gang Bracket
- BC1** Beam Clamp Fits beam flanges thru 1/2" thick.
- BC442** Beam Fastener fits beam flanges 1/8" to 5/8" thick.



J-Hooks

- BCH12** 3/4" Cable Hook
- BCH21** 1 5/16" Cable Hook
- BCH32** 2" Cable Hook
- BCH64** 4" Cable Hook
- BCH12-RB** 3/4" Angle Bracket Cable Fastener
- BCH21-RB** 1 5/16" Angle Bracket Cable Fastener
- BCH32-RB** 2" Angle Bracket Cable Fastener
- BCH64-RB** 4" Angle Bracket Cable Fastener
- BCH12-C2** 3/4" Cable Hook to Beam Clamp
- BCH21-C2** 1 5/16" Cable Hook to Beam Clamp
- BCH32-C2** 2" Cable Hook to Beam Clamp
- BCH64-C2** 4" Cable Hook to Beam Clamp
- BCH12-E-2-4** 3/4" Flange Thickness 1/8" to 1/4"
- BCH12-E-5-8** 3/4" Flange Thickness 5/16" to 1/2"
- BCH12-U-2-4** 3/4" Flange Thickness 1/8" to 1/4" 360° Rotation
- BCH12-U-5-8** 3/4" Flange Thickness 5/16" to 1/2" 360° Rotation
- BCH21-E-2-4** 1 5/16" Flange Thickness 1/8" to 1/4"
- BCH21-E-5-8** 1 5/16" Flange Thickness 5/16" to 1/2"
- BCH21-U-2-4** 1 5/16" Flange Thickness 1/8" to 1/4" 360° Rotation
- BCH21-U-5-8** 1 5/16" Flange Thickness 5/16" to 1/2" 360° Rotation
- BCH32-E-2-4** 2" Flange Thickness 1/8" to 1/4"
- BCH32-E-5-8** 2" Flange Thickness 5/16" to 1/2"
- BCH32-U-2-4** 2" Flange Thickness 1/8" to 1/4" 360° Rotation
- BCH32-U-5-8** 2" Flange Thickness 5/16" to 1/2" 360° Rotation
- BCH12-W2** 3/4"
- BCH21-W2** 1 5/16"
- BCH32-W2** 2"
- BCH21-W2** 1 5/16"
- BCH32-W2** 2"
- BCH-HB21** Support Bar for BCH21 and BCH32
- BR-32-4T** Ring Size 2" Thread Size and Length 1/4"-20 x 9/16"
- BR-64-4T** Ring Size 4" Thread Size and Length 1/4"-20 x 9/16"



- 11455**
- 55455**

- Rack-A-Tiers® Wire Dispenser
- Rack-a-Tiers EZ Roll Mobile Wire Dispenser





- 430 Poly Line 6500' Bucket
- CLR-Q Clear Lube pulling lubricant, 1 quart
- GEL-Q Cable-Gel™ One Quart Squeeze Bottle
- 701K Classic Tone and Probe Kit
- 701K-G Professional Tone and Probe Tracing Kit
- 801K Premium Tone and Probe Kit
- AT8LK LAN Toner Kit
- NC-100 NETcat® Micro NC-100 Digital Voice, Data and Video Wiring Tester
- NC-500 NETcat® Pro NC-500 Structured Wiring Troubleshooter
- 508S Wire Finder/Mini Locator
- 727 Cable Cutter
- 921 Quick Connect Extension System Kit
- 35884 Kwik Stepper® Step Bit Kit
- 0151-09SD High Leverage Side-Cutting Pliers With Stripping Hole 9in. dipped grip
- 0153-02C 7-Piece Screwdriver Set
- 0153-42C 6-in-1 Multi-Tool
- 0153-51C Heavy-Duty Crank Action Phillips Tip #1 x 6in. Screwdriver
- 0154-10C Adjustable Wrench Composite Handle 10"
- 0155-25A Rule, Power Return 25'
- 0156-12 16 Oz. Straight Claw Hammer
- 0251-06D Diagonal Cutting Pliers 6in. dipped grip
- 0251-08AD High Leverage Diagonal Cutting Pliers 8in. angled dipped grip
- 0253-01C 7-Piece Nut Driver Set (3" Shank)
- 0351-06D Long Nose Pliers/Side Cutting 6in. dipped grip
- 0351-08D Long Nose Pliers/Side Cutting 8in. dipped grip
- 0354-01 7-Piece Combination Ratcheting Wrench Set
- 0354-02 7-Piece Combination Metric Ratcheting Wrench Set
- 0451-12D Pump Pliers 12in. dipped grip
- 0652-11 Utility Knife with blades,
- 301A 6' Keyhole Saw
- 34AR-6 Self-Feeding Spade Bits
- 735BB 1/2" - 1-1/4" Conduit Size Manual Round Standard Knockout Punch
- DBITKIT D'VersiBIT Kit with 9/16in. drill, placement tool and grip for 1/2" wire
- FP-3 3' Fish Pole
- L107 Electrician's Torpedo Level
- L97 Mini-Magnet Laser Level



- 5505-190 120V 15Amp Surge Protector 19" Rack Mount w/Switch 12 Plug 12' 14/3 SJT Cord
- Backed by Leviton's Lifetime \$5000 Connected-Equipment Warranty**



- DRS-1215 14-outlets, 15-ft cord, 3840 joule, Rack Mount Economy Surge Suppressor
 - HTSWIVEL6 6 Rotatable Outlets, Direct plug-in, 1500 Joules, 1-line gold coaxial 1-line tel/modem protection - Home/Business Theater Surge Suppressor
- Lifetime limited warranty**



- SP064-10 Rack Mounted Surge Suppression Strip 15 amp 120V 6 outlets on rear 10' Cord
- RoHS Compliant**



- 10055501 D814 impact tool with EverSharp 110, EverSharp 66 blade & free blade
- 10051501 D914 impact tool with EverSharp 110, EverSharp 66 blade & free blade
- 10061501 D914S impact tool with EverSharp 110, EverSharp 66 blade & free blade
- 10076500 EverSharp 110 blade
- 10056500 EverSharp 66 blade
- MT-8200-60A IntelliTone 200 Toner and Probe Kit
- 11212530 All-in-one crimping tool
- 44500000 Electrician's Snips



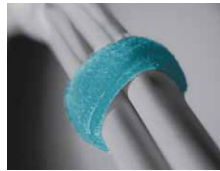
- PA4941 SurePunch® Pro Technician's GripPack
- PE-830 Tele-Mate™ Pro Telephone Test Set
- PA1594 LAN & A/V Cable-Check™
- PA1576 Data/Link ID and Cable-Check™
- PA3588 SurePunch® Pro PDT with combination 110/66 cut-only blade & light with batteries
- PA1573 Tone & Probe Plus Cable-Check
- PA1930 BNC Coax 3-in-1 Multi-Tool
- PA1119 Professional all-in-one cutter and stripper
- PA1180 Needle-nose feature knurled gripping surface
- PA1283 2-level coaxial cable stripper for RG6/6QS/59 CATV "F" conns
- PA1559 Adjustable compression tool (1555) upgraded
- PA1931 Datacomm & Telecom Scissors
- PA3560 ProPunch™ 110 5-Pair Punchdown
- PA4945 GripPack PowerPlay® PT-540 Toolkit
- PA6520 PowerPlay® PT-540 Multi-Tool
- PA1116 Multi-purpose cutter and stripper
- PA1561 A further upgraded PA1556m



QMC-MFSB-01-02 Media Converter 10/100Base-T to 100Base-FX SC Connector
QMC-MFSB-01-03 Media Converter 10/100Base-T to 100Base-FX ST Connector



189645 VELCRO® ONE-WRAP® 3/4" x 75', non-plenum, black
189755 VELCRO® ONE-WRAP® 1/2" x 75', non-plenum, black
151505 VELCRO® ONE-WRAP® 1/2" x 75', plenum, cranberry
151504 VELCRO® ONE-WRAP® 3/4" x 75', plenum, cranberry
151494 VELCRO® ONE-WRAP® 3/4" x 75', plenum, black



Nylon Cable Ties

CC7-418-0 4" 18# Black Cable Tie, 1000/pack
CC7-418-9 4" 18# Natural Cable Tie, 1000/pack
CC7-750-0 7" 50# Black Cable Tie, 100/pack
CC7-750M-0 7" 50# Black Cable Tie, 1000/pack
CC7-750-9 7" 50# Natural Cable Tie, 100/pack
CC7-750M-9 7" 50# Natural Cable Tie, 1000/pack
CC7-1150-0 11" 50# Black Cable Tie, 100/pack
CC7-1150M-0 11" 50# Black Cable Tie, 1000/pack
CC7-1150-9 11" 50# Natural Cable Tie, 100/pack
CC7-1150M-9 11" 50# Natural Cable Tie, 1000/pack
CC7-750-P 7" 50# Maroon Plenum Cable Tie, 1000/pack
CC7-1150-P 11" 50# Maroon Plenum Cable Tie, 1000/pack



5K-0601-5 #6 Ground Wire Green Industrial Copper

Hinged Wall Brackets

16AWG steel textured black finish one side hinged for easy cable management

HB1 6"D x 19.25"W x 1.75"H
HB2 6"D x 19.25"W x 3.5"H
HB3 6"D x 19.25"W x 5.25"H
HB4 6"D x 19.25"W x 7"H
HB5 6"D x 19.25"W x 10"H



Essential Support Products

We know a complete “end-to-end” solution takes more than just cable and connectivity, but also a wide variety of support products. Accu-Tech has invested in more local inventory of these items to better help you complete your projects both on-time and on-budget. Your input in selecting these items has been invaluable and we look forward to your suggestions for additional project “must haves.”

Accu-Tech®