



## CATALOGUE



Leading edge  
tableware and  
buffetware



A fusion of vision, inspiration, passion and expertise

Avantgarde is the result of years of worldwide research and development. Utilising the combined resources and expertise of industry leaders, the avantgarde range has emerged as a collection of unique, innovative designs, certified quality with individuality, flexibility and top performance.

Manufactured to strict quality standards by the best equipped factories, every item in the Avantgarde range has been carefully graded and is securely packed for export.

- ❑ Chinaware
- ❑ Chafing Dishes
- ❑ Juice & Milk Dispensers
- ❑ Cereal Dispensers
- ❑ Vacuum Jugs
- ❑ Buffet Supplies
- ❑ Custom Design





# Aqua

NEW

Breaking the often stark landscape of porcelain on the table, Aqua provides a softening touch as an accent piece or in a complete setting.

Leaning on an organic trend between a liquid and a solid, the smooth flowing lines of Aqua inspires chefs and restaurateurs to create that point of difference in modern cuisine, instilling a sense of fluent calm around the dining experience.

Importantly, through Avantgarde's efficiencies in design and production, this cost effective, hotel grade porcelain stands up to heavy commercial use.

Let your ideas flow with Aqua.



## FEATURES

- Striking
- Sweeping lines
- Fresh
- Creative
- Efficient
- Cost effective
- Durable
- High fired porcelain
- White hotel grade

## Chinaware

---

Code	Description	Size (mm)
AG 93312	Oval Extra Deep Bowl	127 x 120
AG 93318		180 x 170
AG 93323		238 x 220



---

Code	Description	Size (mm)
AG 91115	Oval Coupe Plate	153 x 130
AG 91122		220 x 190
AG 91128		280 x 240



---

Code	Description	Size (mm)
AG 92226	Gourmet Oval Deep Plate	260 x 250





# Modulus

NEW

Did an architect, sculptor and economist design these shapes? Modulus inspires the creative presentation of food in a compartmentalised manner. It facilitates portion control, thereby keeping food costs in check.

Modulus is at home in busy bistros presenting the classic three course business lunch on a single plate, or in efficient buffets where the variety of shapes come into their own.

Needless to say, as signature pieces or a complete concept, the durability of this range is backed by Avantgarde's reputation for high grade commercial porcelain.

Chefs love the creative opportunities, managers love the portion control and guests love the presentation. Modulus works.



## FEATURES

- Modular
- Creative
- Durable
- Adaptable
- Efficient
- High fired porcelain
- Fresh
- Cost effective
- White hotel grade

## Chinaware

Code	Description	Size (mm)
AG 98808	Square Dish	80 x 80 x 50



Code	Description	Size (mm)
AG 99916	Rectangular Dish	160 x 80 x 50



Code	Description	Size (mm)
AG 90133	Rectangular Plate	335 x 165 x 25



Code	Description	Size (mm)
AG 97711	Conical Round Bowl	110 x 70 (350 ml)



Code	Description	Size (mm)
AG 96607	Cup No Handle	75 x 80 (200 ml)



Code	Description	Size (mm)
AG 98815	Square Deep Plate	150 x 150 x 50





# Universal

NEW

Lightweight and versatile, Avantgarde's new Universal Gourmet Platter ticks all the boxes.

At home in restaurants, buffets and bistros, this commercial grade platter is perfect as a serving dish or for presenting a modern entree, main or dessert. With maximum plating area through a rimless design, this platter is popular too for tapas menus and the serving of fish.

As with all all Avantgarde chinaware, durability under heavy commercial use and a cost effective price point are paramount during design and manufacturing.

Get creative with Universal.



## FEATURES

- Lightweight
- Versatile
- Modern
- White hotel grade
- Rimless
- Full plating area
- Serving
- Meals
- Sides

## Chinaware

Code	Description	Size (cm)
AG 90028	Universal Gourmet Platter	28 x 18



Code	Description	Size (cm)
AG 90036	Universal Gourmet Platter	36 x 23



Code	Description	Size (cm)
AG 88240	Universal Gourmet Platter	40 x 20







# Premium Line

NEW

Spaceflight and irresistible appeal combine in the new Avantgarde Premium Line chafing dishes. A new benchmark in efficiency, practicality and versatility.

Eye catching and adaptable in today's modern buffet landscape, the Premium Line chafing dishes meet the most demanding expectations in terms of food presentation, portion control, food quality and waste reduction.

And of course, our manufacturing experience delivers on budget and quality.

Elevate your buffet with ease. Choose Avantgarde Premium Line.



## FEATURES

- Next generation
- 18/10 construction
- Wide glass lid
- Hydraulic hinge
- Induction base
- Water channel
- Silent soft close lid
- Food pan included
- Adjustable levelling

## Features

- Modern design and functionality
- Use on an induction hob or on the matching stand as a classic chafing dish
- Compatible with induction, electric element or chafer fuel
- Patented hydraulic hinge mechanism for smooth and silent closing motion
- Removable lid for cleaning and storage

**Lid Position**  
Holds position at 90° and 70°  
Closes automatically and silently with gentle touch

**Mirror Finish**

**Water Return System**  
Condensation flows back to water pan

**Notch**  
Change food pan easily

**Hydraulic Hinge**  
Smooth opening and closing

**Adjustable Levelling Pin**  
Perfectly level placement as required

**Capsuled Bottom**  
Sandwich induction base for fast and even heating



## Variations

- Premium Line is adaptable to your needs
- Versatile, practical and modular
- Innovative, functional and efficient



1/2 Chafing Dish  
Stacked for storage

Easy Stacking Solution

Interlocking Tubular Legs  
Stacking stability



1/2 Chafing Dish  
Glass lid, on stand



Round Chafing Dish 4 L  
Glass lid



Buffet Soup Server  
Glass lid, on stand



Removable Lid  
Easy cleaning and storage



1/1 Chafing Dish  
Glass lid, on stand



Stackable Stand Design

## Chafing Dishes

Code	Description	Size (mm)
AG 30011-G	<b>1/1 Chafing Dish Glass Lid</b> Stainless Steel Insert Incl. 9 L Capacity	570 x 464 x 160



Code	Description	Size (mm)
AG 30011-S	<b>1/1 Chafing Dish Stainless Lid</b> Stainless Steel Insert Incl. 9 L Capacity	570 x 464 x 160



Code	Description	Size (mm)
AG 30311	<b>Buffet Stand - 1/1 Server</b> (Electric heating optional)	655 x 374 x 230



Code	Description	Size (mm)
AG 30023-G	<b>2/3 Chafing Dish Glass Lid</b> Stainless Steel Insert Incl. 6 L Capacity	460 x 410 x 160



Code	Description	Size (mm)
AG 30023-S	<b>2/3 Chafing Dish Stainless Lid</b> Stainless Steel Insert Incl. 6 L Capacity	460 x 410 x 160



Code	Description	Size (mm)
AG 30323	<b>Buffet Stand - 2/3 Server</b> (Electric heating optional)	486 x 375 x 230



## Chafing Dishes

Code	Description	Size (mm)
AG 30012-G	<b>1/2 Chafing Dish Glass Lid</b> Stainless Steel Insert Incl. 4 L Capacity	455 x 315 x 160



Code	Description	Size (mm)
AG 30012-S	<b>1/2 Chafing Dish Stainless Lid</b> Stainless Steel Insert Incl. 4 L Capacity	455 x 315 x 160



Code	Description	Size (mm)
AG 30312	<b>Buffet Stand - 1/2 Server</b> (Electric heating optional)	399 x 377 x 230



Code	Description	Size (mm)
AG 30060-G	<b>Round Chafing Dish Glass Lid</b> Stainless Steel Insert Incl. 6 L Capacity	534 x 445 x 160



Code	Description	Size (mm)
AG 30060-S	<b>Round Chafing Dish Stainless Lid</b> Stainless Steel Insert Incl. 6 L Capacity	534 x 445 x 160



Code	Description	Size (mm)
AG 30360	<b>Buffet Stand - Round 6 L Server</b> (Electric heating optional)	446 x 446 x 230



## Chafing Dishes

Code	Description	Size (mm)
AG 30040-G	<b>Round Chafing Dish Glass Lid</b> Stainless Steel Insert Incl. 4 L Capacity	464 x 370 x 160



Code	Description	Size (mm)
AG 30040-S	<b>Round Chafing Dish Stainless Lid</b> Stainless Steel Insert Incl. 4 L Capacity	464 x 370 x 160



Code	Description	Size (mm)
AG 30340	<b>Buffet Stand - Round 4 L Server</b> (Electric heating optional)	377 x 377 x 230



Code	Description	Size (mm)
AG 30033-G	<b>Buffet Soup Server Glass Lid</b> Stainless Steel Insert Incl. 11 L Capacity	460 x 415 x 255



Code	Description	Size (mm)
AG 30033-S	<b>Buffet Soup Server Stainless Lid</b> Stainless Steel Insert Incl. 11 L Capacity	460 x 415 x 255



Code	Description	Size (mm)
AG 30333	<b>Buffet Stand - Soup Server</b> (Electric heating optional)	377 x 377 x 185



## Juice Dispensers

Code	Description	Size (mm)
AG 37712	Juice Dispenser 12 L Capacity	364 x 364 x 460



## Accessories

Code	Description	Size (mm)
AG 32011	1/1 Porcelain Food Pan	530 x 330 x 60



Code	Description	Size (mm)
AG 32011-D	1/1 Porcelain Food Pan Divided	530 x 330 x 60



## Accessories

Code	Description	Size (mm)
AG 32023	2/3 Porcelain Food Pan	355 x 330 x 55



Code	Description	Size (mm)
AG 32023-D	2/3 Porcelain Food Pan Divided	355 x 330 x 55



Code	Description	Size (mm)
AG 32012	1/2 Porcelain Food Pan	330 x 270 x 60



Code	Description	Size (mm)
AG 32013	1/3 Porcelain Food Pan	330 x 180 x 60



Code	Description	Size (mm)
AG 32060	Round Porcelain Food Pan For 6 L Chafing Dish	385 x 385 x 65



Code	Description	Size (mm)
AG 32060-D	Round Porcelain Food Pan Divided For 6 L Chafing Dish	385 x 385 x 65





## Accessories

Code	Description	Size (mm)
AG 32040	<b>Round Porcelain Food Pan</b> For 4 L Chafing Dish	330 x 330 x 65



Code	Description	Size (mm)
AG 32040-D	<b>Round Porcelain Food Pan</b> Divided For 4 L Chafing Dish	330 x 330 x 65



Code	Description	Size (mm)
AG 33011	<b>1/1 Stainless Steel Food Pan</b> 9 L Capacity	530 x 325 x 65



Code	Description	Size (mm)
AG 33011-D	<b>1/1 Stainless Steel Food Pan</b> Divided 2 x 4 L Capacity	530 x 325 x 65



Code	Description	Size (mm)
AG 33023	<b>2/3 Stainless Steel Food Pan</b> 6 L Capacity	353 x 325 x 65



Code	Description	Size (mm)
AG 33012	<b>1/2 Stainless Steel Food Pan</b> 4 L Capacity	325 x 265 x 65



## Accessories

Code	Description	Size (mm)
AG 33013	<b>1/3 Stainless Steel Food Pan</b> 3 L Capacity	325 x 176 x 65



Code	Description	Size (mm)
AG 33060	<b>Round Stainless Steel Food Pan</b> For 6 L Chafing Dish	385 x 385 x 65



Code	Description	Size (mm)
AG 33060-D	<b>Round Stainless Steel Food Pan</b> Divided For 6 L Chafing Dish	385 x 385 x 65



Code	Description	Size (mm)
AG 33040	<b>Round Stainless Steel Food Pan</b> For 4 L Chafing Dish	290 x 290 x 65



Code	Description	Size (mm)
AG 33033	<b>Round Stainless Steel Food Pan</b> For 11 L Buffet Soup Server	290 x 290 x 215

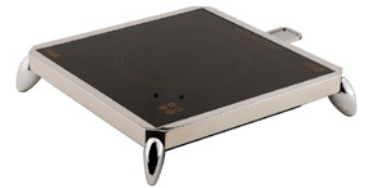


## Accessories

Code	Description	Size (mm)
	<b>Counter Fitted Induction Heater</b>	385 x 360 x 100
	Cable Remote Control	
AG 30510	1000 W Unit	
AG 30520	2000 W Unit	
AG 30525	2500 W Unit	



Code	Description	Size (mm)
AG 30535	<b>Benchtop Induction Heater</b>	355 x 355 x 62
	Touch Panel Control	
	1000 W	



Code	Description
05524.0-01	<b>Stego Electric Heating Element</b>
	Suitable for all Stands
	Rotary Dial Control
	500 W



# Chinaware

## Your commercial grade solution

Avantgarde chinaware reflects the latest international dining and buffet trends, with over 200 items in the selection. The creation of shapes, sizes and designs has been influenced by internationally recognised food and beverage executives, chefs and homewares professionals. Avantgarde chinaware is produced in a famous region of China which has over 1800 years of history in ceramics.

The porcelain formula specified for avantgarde chinaware conforms with recognised international quality standards including AS-NZS 4371:1996, BS 4034:1990 and BSEN 1183:1997. Certification carried out by CERAM, an independent laboratory in the United Kingdom includes: non porosity, thermal shock, chipping, impact, lead and cadmium release, glaze hardness, dishwasher and microwave safety.



### ROUND FLAT RIM PLATE

- 15cm AG 80015
- 17cm AG 80017
- 19cm AG 80019
- 22cm AG 80022
- 25cm AG 80025
- 27cm AG 80027
- 28cm AG 80028
- 30cm AG 80030
- 33cm AG 80033



### ROUND FLAT PLATE - BROAD RIM

- 16cm AG 84416
- 25cm AG 84425
- 29.5cm AG 84429
- 33cm AG 84433



### TRIANGLE FLAT RIM PLATE

- 14cm AG 81114
- 17cm AG 81117
- 23cm AG 81123
- 31cm AG 81131



### SQUARE COUPE PLATE

- 9cm AG 81409
- 15cm AG 81415
- 20cm AG 81420
- 28cm AG 81428



### RECTANGULAR COUPE PLATE

- 25cm x 19cm AG 84525
- 28.5cm x 21cm AG 84528



### SQUARE FLAT RIM PLATE

- 13cm AG 82213
- 17cm AG 82217
- 23cm AG 82223
- 30cm AG 82230



### ROUND DEEP RIM PLATE

- 13cm AG 81313
- 18cm AG 81318
- 23cm AG 81323
- 26cm AG 81326
- 30cm AG 81330
- 34cm AG 81334



### RECTANGULAR FLAT RIM PLATE

- 27cm x 22.5cm AG 82727
- 34.5cm x 29.5cm AG 82734



### QUAD DEEP PLATE

- 20cm AG 87320
- 27cm AG 87327
- 32cm AG 87332

# Chinaware



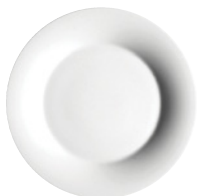
**MOON DEEP PLATE**

20cm AG 85320  
27cm AG 85327  
32cm AG 85332



**OVAL DEEP RIM PLATE**

36cm x 28cm AG 81836



**ROUND FLAT PLATE**

15cm AG 81015  
17cm AG 81017  
23.5cm AG 81023  
27cm AG 81027  
30cm AG 81030  
32cm AG 81032



**ROUND DEEP PLATE**

14cm AG 80114  
20cm AG 80120  
24.5cm AG 80124  
29cm AG 80129  
32cm AG 80132



**STELLAR BOWL**

17cm x 9.5cm x 5cm AG 81617  
23cm x 13cm x 5cm AG 81623



**STELLAR SERVING DISH**

20cm x 11.5cm AG 81720  
37cm x 21cm AG 81737



**ECLIPSE PLATE**

23cm x 12cm AG 80723



**ECLIPSE DEEP PLATE**

13.5cm x 7cm AG 83713  
29.5cm x 15.5cm AG 83729  
40cm x 20cm AG 83740



**ECLIPSE SERVING PLATE**

39cm x 19.5cm AG 82039  
46cm x 22cm AG 82046



**OVAL SERVING PLATE**

36.5cm x 17cm AG 82136  
41cm x 19.5cm AG 82141



**OVAL DEEP BOWL**

17cm x 12.5cm AG 80417  
20cm x 14cm AG 80420  
23cm x 16cm AG 80423  
25cm x 17.5cm AG 80425  
31cm x 21.5cm AG 80431



**LUNA DISH**

15cm x 13cm AG 85815  
20cm x 14cm AG 85820  
24cm x 16cm AG 85824  
29cm x 21cm AG 85829



**UNIVERSAL BOWL**

8cm AG 86608  
10cm AG 85024  
12cm AG 86612  
14cm AG 86614  
18cm AG 86618  
22cm AG 86622  
26cm AG 86626



**UNIVERSAL LID WITH KNOB**

For 12cm Bowl AG 86613  
For 14cm Bowl AG 86615



**COMBI SAUCER**

19cm - Suits 12cm & 14cm Bowl AG 86619



**ECHO BOWL**

9cm AG 82509  
11cm AG 82511  
15cm AG 82515  
19cm AG 82519



**SQUARE TULIP BOWL**

6cm AG 86206  
8cm AG 86208  
10cm AG 86210  
14cm AG 86214  
18cm AG 86218  
20cm AG 86220



**COMET CUP**

5cm AG 84605  
7cm AG 84607  
9cm AG 84609  
10cm AG 84610

# Chinaware

	<b>ROUND DEEP BOWL</b>			<b>BIANCA SQUARE DISH</b>			
	7cm	AG 81207			8.5cm	AG 86708	
	8cm	AG 81208			<b>CLIO DEEP DISH</b>		
	9.5cm	AG 81209			8.5cm	AG 86808	
	10cm	AG 81210				<b>MIKADO FLAT RIM DISH</b>	
	12.5cm	AG 81212				7.5cm	AG 86507
	15cm	AG 81215					<b>TWIN DISH</b>
18cm	AG 81218	11cm x 5.5cm	AG 87211				
21cm	AG 81221		<b>ROUND STACKING BOWL</b>				
23cm	AG 81223		12cm	AG 83312			
25.5cm	AG 81225		13.5cm	AG 83313			
30cm	AG 81230	15cm	AG 83315		<b>ROUND STACKING ASHTRAY</b>		
		9.5cm	AG 86495				
	<b>ROUND RICE BOWL</b>			<b>CHINESE SPOON</b>			
10cm	AG 81510	12.5cm		AG 86912		<b>SPOON/CHOPSTICK REST</b>	
11.5cm	AG 81511	9cm	AG 87609			<b>SOY/VINEGAR POT WITH LID</b>	
		0.10Ltr	AG 87510			<b>SQUARE DIVIDED DISH</b>	
		8cm	AG 87108			<b>TOOTH PICK HOLDER</b>	
					4.5cm	AG 88445	
	<b>YING/YANG DIPPING BOWL</b>			<b>BUD VASE</b>			
9.5cm	AG 87909			15cm	AG 87415		
	<b>SQUARE CURVED DISH</b>			<b>BUD VASE</b>			
9cm	AG 82409			10cm	AG 87410		
	<b>SATURN DISH</b>			<b>NAPKIN HOLDER (Oval Thick Ring)</b>			
10.5cm x 6cm	AG 84110			4cm	AG 87804		

# Chinaware



**NAPKIN HOLDER  
(Round Ring)**  
4.5cm AG 87845



**RAMEKIN**  
6.5cm (D) x 3.3cm (H) AG 80506  
8cm (D) x 7cm (H) AG 80508  
9cm (D) x 4cm (H) AG 80509  
11.5cm (D) x 4.5cm (H) AG 80511  
17cm (D) x 7.5cm (H) AG 80517



**EGG CUP / TEA LIGHT**  
8.5cm AG 85585



**EGG CUP WITH SAUCER**  
13.5cm AG 85613



**OVAL SALT SHAKER**  
6cm (h) x 5.5cm (d) AG 86010



**OVAL PEPPER SHAKER**  
6cm (h) x 5.5cm (d) AG 86020



**ROUND SALT SHAKER**  
6cm (h) x 4cm (d) AG 86030



**ROUND PEPPER SHAKER**  
6cm (h) x 4cm (d) AG 86040



**ROUND DEEP BOWL  
WITH RIM**  
28cm AG 83428  
32cm AG 83432  
38cm AG 83438  
41cm AG 83441



**ROUND DEEP COUPE PLATE**  
16cm AG 89016  
18cm AG 89018  
21cm AG 89021  
25.5cm AG 89025  
30.5cm AG 89030  
32cm AG 89032  
35cm AG 89035  
40.5cm AG 89040  
46cm AG 89046



**OVAL DEEP COUPE PLATTER**  
24cm x 16cm AG 83924  
28cm x 18.5cm AG 83928  
33cm x 23.5cm AG 83933  
50cm x 35cm AG 83950  
56cm x 42cm AG 83956



**OVAL DEEP DISH**  
22.5cm x 15.5cm AG 87022  
27.5cm x 19cm AG 87027  
33cm x 23cm AG 87033  
37.5cm x 26cm AG 87037



**ROUND DEEP  
BUFFET BOWL**  
29cm / 4 Ltr AG 88303

**ROUND FLAT COUPE PLATE**  
9cm AG 80309  
10.5cm AG 80310  
15.5cm AG 80315  
17.5cm AG 80317  
20.5cm AG 80320  
23cm AG 80323  
25.5cm AG 80325  
30.5cm AG 80330  
32cm AG 80332  
35cm AG 80335  
39.5cm AG 80339  
45cm AG 80345  
50cm AG 80350

# Chinaware



**SQUARE COUPE PLATTER**

- 21cm AG 88921
- 25cm AG 88925
- 28cm AG 88928
- 36cm AG 88936
- 40cm AG 88940



**SQUARE BASE PLATE**

- 24cm AG 83824



**PETITE SQUARE PLATE**

- 10.5cm AG 83210



**RECTANGULAR FLAT RIM PLATTER**

- 12cm x 8cm AG 83612
- 24cm x 9cm AG 83624
- 30cm x 12cm AG 83630
- 36.5cm x 18cm AG 83636
- 41cm x 23cm AG 83641
- 46.5cm x 28cm AG 83646



**SQUARE DEEP PLATE**

- 20.5cm AG 81920
- 26cm AG 81926
- 31cm AG 81931



**FOUR SEASONS PLATE**

- 23cm AG 82323



**SQUARE FLAT PLATTER**

- 17.5cm AG 83117
- 21cm AG 83121
- 26cm AG 83126
- 30cm AG 83130
- 36cm AG 83136
- 40cm AG 83140



**SQUARE FOOTED BOWL**

- 7.5cm AG 86107
- 12cm AG 86112
- 19cm AG 86119
- 22cm AG 86122
- 28cm AG 86128



**SQUARE DEEP BOWL**

- 12cm AG 86312
- 14cm AG 86314
- 16cm AG 86316
- 18cm AG 86318
- 20cm AG 86320
- 23cm AG 86323



# Chinaware



**OVAL COFFEE POT - BASE**  
0.30 Ltr AG 84230  
**LID FOR OVAL COFFEE POT**  
AG 84231

**OVAL COFFEE POT - BASE**  
0.60 Ltr AG 84260  
**LID FOR OVAL COFFEE POT**  
AG 84261



**OVAL TEA POT - BASE**  
0.35 Ltr AG 84335  
**LID FOR OVAL TEA POT**  
AG 84336

**OVAL TEA POT - BASE**  
0.70 Ltr AG 84370  
**LID FOR OVAL TEA POT**  
AG 84371



**OVAL SUGAR BOWL - BASE**  
0.25 Ltr AG 84916  
**LID FOR OVAL SUGAR BOWL**  
AG 84917



**ROUND UNIVERSAL SUGAR BOWL - BASE**  
10cm / 0.24 Ltr AG 85024  
**LID FOR ROUND UNIVERSAL SUGAR BOWL**  
10.5cm AG 85025



**OVAL CREAMER**  
0.06 Ltr AG 80906  
0.15 Ltr AG 80915  
0.30 Ltr AG 80930  
0.50 Ltr AG 80950



**ROUND TEA POT - BASE**  
0.60 Ltr AG 85260  
**LID FOR ROUND TEA POT**  
AG 85261

**ROUND TEA POT - BASE**  
0.85 Ltr AG 85285  
**LID FOR ROUND TEA POT**  
AG 85286



**ROUND COFFEE POT - BASE**  
0.35 Ltr AG 85435  
**LID FOR ROUND COFFEE POT**  
AG 85436

**ROUND COFFEE POT - BASE**  
0.60 Ltr AG 85460  
**LID FOR ROUND COFFEE POT**  
AG 85461



**ROUND SUGAR BOWL - BASE**  
9cm AG 85709  
**LID FOR ROUND SUGAR BOWL**  
AG 85710



**ROUND CREAMER**  
0.20 Ltr AG 85120



**SACHET HOLDER**  
10.5cm x 7.5cm x 4cm AG 84810



**SAKE CUP**  
0.07 Ltr AG 89501

# Chinaware



**STACKING CUP ESPRESSO**  
0.09 Ltr AG 88801  
**SAUCER**  
12cm AG 88802



**STACKING CUP**  
0.18 Ltr AG 88803  
**SAUCER**  
16cm AG 88807



**STACKING CUP**  
0.22 Ltr AG 88804  
**SAUCER**  
16cm AG 88807



**STACKING COFFEE MUG**  
0.22 Ltr AG 88809  
0.25 Ltr AG 88805  
0.30 Ltr AG 88808  
**SAUCER**  
16cm AG 88807



**STACKING SOUP CUP WITH HANDLES**  
0.26 Ltr AG 88806  
**SAUCER**  
16cm AG 88807



**STACKING MUG**  
0.26 Ltr AG 88810



**ESPRESSO CUP**  
0.08 Ltr AG 87701  
**SAUCER**  
12cm AG 89902



**CAPPUCCINO CUP**  
0.22 Ltr AG 87703  
**SAUCER**  
15cm AG 89905



**TEA / CAPPUCCINO CUP**  
0.27 Ltr AG 87704  
**SAUCER**  
15cm AG 89905



**ESPRESSO CUP**  
0.08 Ltr AG 89901  
**SAUCER**  
12cm AG 89902



**CAFFE CUP**  
0.20 Ltr AG 89903  
**SAUCER**  
15cm AG 89905



**CAFFE CUP**  
0.25 Ltr AG 89906  
**SAUCER**  
15cm AG 89905



**LATTE CUP TALL**  
0.30 Ltr AG 89904  
**SAUCER**  
15cm AG 89905



**COFFEE MUG**  
0.25 Ltr AG 89301  
0.30 Ltr AG 89302



**ESPRESSO CUP**  
0.08 Ltr AG 83001  
**SAUCER**  
12cm AG 89902



**COFFEE CUP**  
0.18 Ltr AG 83003  
**SAUCER**  
15cm AG 89905



**CAPPUCCINO CUP**  
0.22 Ltr AG 83004  
**SAUCER**  
15cm AG 89905