



ROLLER GRILL *Electric Glass Ceramic Movable Salamander with Plate Detection System SEM600PDS*

As soon as the PDS (Plate Detection System) function is selected the vitro-ceramic plate automatically heats up when the plate is in contact with the bar above the grid, and goes off when the tray is removed. Automatic switch on, instantaneous cooking and energy saving. Power control system: The most precise regulation today for vitro-ceramic version. Precise and various cooking. Flexibility and energy control.

Product Code	04-003-00106
Dimension	60 x 64 x 59cm Cooking Area: 49.5 x 37.5cm
Elec. Spec.	230V / 50Hz / 3000W



ROLLER GRILL *Electric Quartz Movable Salamanders SEM600Q*

Infrared quartz tubes (1050°C) to grill and glaze plates very quickly. 2 areas with 4 lamps each.

Product Code	04-003-00107
Dimension	60 x 59 x 59cm Cooking Area: 49.5 x 37.5cm
Elec. Spec.	230V / 50Hz / 3000W



ROLLER GRILL *Electric Toaster / Salamander*

Basic equipment for cafes, pubs and snack bars, the infrared quartz toaster with 1 or 2 levels cooks or reheats all kinds of cheese sandwiches, croque-monsieur, pizzas, quiches, cheese/meat puffs, croissants. It even browns onion soups, toasts baguettes and bread etc. Instantly cooking at core with no smoke or odour thanks to the rays of the infrared quartz tubes (1050°C) Fast temperature rise in less than 30s. Removable back panel for an easy cleaning.

Product Code	04-003-00101	04-003-00102
Dimension	45 x 28.5 x 30.5cm Grill: 35 x 24cm	45 x 28.5 x 42cm Grill: 35 x 24cm
Capacity	150 toasts/h 1 level	300 toasts/h 2 levels
Elec. Spec.	230V / 50Hz / 3000W	230V / 50Hz / 2000W



ROLLER GRILL *Electric Glass Ceramic Movable Salamander with Plate Detection System SEM800PDS*

The SEM800-PDS puts versatile powerful performance at the heart of your kitchen. Ideal for grilling and finishing, precise height adjustment system allows right heat to food giving quality results on time every time.

Product Code	04-003-00103
Dimension	80 x 64 x 59cm Cooking Area: 70 x 37.5cm
Elec. Spec.	380V / 50Hz / 4500W



ROLLER GRILL *Electric Quartz Movable Salamanders SEM800Q*

Clean efficient quartz tubes with infrared elements which minimise smoke and odours, the speed of cooking and the rapid heat up time saves on energy consumption without compromising on performance.

Product Code	04-003-00105(XX)
Dimension	80 x 64 x 59cm Cooking Area: 74 x 37.5cm
Elec. Spec.	380V / 50Hz / 4500W



04-003-00130



04-003-00131

ROLLER GRILL *Electric Quartz Toaster*

GN 1/1 size salamander toasters. To defrost, brown, glaze, grill, or toast in quantity your quiche, sandwiches with cheese, pizza, toasts with no preheating, smoke or odours thanks to the rays of infrared quartz tubes (1050°C). Tray is fitted with handles for fast service.

Product Code	04-003-00130 TS1270	04-003-00131 TS3270
Dimension	64 x 38 x 33cm Grill: 52 x 32cm	64 x 38 x 47.5cm Grill: 2 x (52 x 32cm)
Capacity	1 level	2 levels
Elec. Spec.	230V / 50Hz / 2700W	380V / 50Hz / 4000W



WARING Heavy-Duty 4-Slots Combination Toaster WCT850K

The powerful, versatile Waring WCT850 heavy duty 4 slot commercial toaster quickly and easily toasts breads, bagels, Texas toast, and even frozen waffles! At the flip of a switch, you can select the "bagel" setting to toast just one side while warming the other, or the "bread" setting to toast on both sides, for perfect results every time.

Product Code	04-003-00127
Dimension	22.8 x 30 x 33cm
Capacity	Slot Width: 5 x 1.2cm
Elec. Spec.	230V / 50-60Hz / 2800W



WARING 4-Slots Toaster WCT708E

Toast up to 225 slices per hour with the Waring® WCT708 Medium-Duty 4-Slot Toaster. Electronic browning controls let you set separate browning levels for each set of slices. Four extra-wide slots and self-centering bread racks are perfect for bagels, sliced bread and more

Product Code	04-003-00128
Dimension	60 x 46 x 10cm
Capacity	Slot Width: 4.3cm 225 toasts/h
Elec. Spec.	230V / 50Hz / 1800W



Stainless Steel 4-Slots Toaster

Product Code	04-002-00354
Dimension	34 x 23 x 25cm
Elec. Spec.	230V / 50Hz / 2300W



Stainless Steel 6-Slots Toaster

Product Code	04-002-00355
Dimension	46 x 29 x 25cm
Elec. Spec.	230V / 50Hz / 3000W



SHARP Stainless Steel Touch Control Microwave Oven

Express Defrost Key with 3 Menus. Wide 272 mm Turntable. Compact and Space-saving Design. 3 Auto Menu Keys. 2 Reheat Menu Keys. Instant Cook. Easy Defrost. More/Less Setting. Slow Cook Key. Child Lock.

Product Code	04-003-00100
Dimension	46 x 38 x 27.5cm
Capacity	22ℓ
Elec. Spec.	230-240V / 50Hz / 800W



SHARP Stainless Steel Touch Control Microwave Oven

Express Defrost Key with 3 Menus. 6 Microwave Power Levels. 2 Reheat Menu Keys. Easy Defrost. Slow Cook Key. Child Lock. Alarm Function.

Product Code	04-003-00099
Dimension	52 x 44.7 x 31cm
Capacity	33ℓ
Elec. Spec.	230-240V / 50Hz / 1100W



SAMSUNG Solo Microwave Oven

Quick Defrost for fast thawing of meat. Auto Cook programme for easy cooking. Ceramic Inside™ protects from scratches and discolouration.

Product Code	04-003-00098
Dimension	48.9 x 37.4 x 27.5cm
Capacity	23ℓ
Elec. Spec.	230V / 50Hz / 800W
Colour	Black



SAMSUNG Stainless Steel Wide Grill Microwave Oven

SLIM FRY™ technique for Healthier Crispy cooking. Smart Moisture Sensor maintains optimal humidity. Wide Grill enhanced grilling and browning effects.

Product Code	04-003-00097
Dimension	52.3 x 30.9 x 50.6cm
Capacity	32ℓ
Elec. Spec.	900W



MENUMASTER Commercial Microwave Oven

Faster cooking, steaming and re-therming. Excellent food quality, with more throughput. No vent hood required. No costly hood. Economical installation, saves money.

Product Code	04-003-00093 DEC14E2	04-003-00094 DEC18E2
Dimension	34.3 x 41.9 x 54.9cm	34.3 x 41.9 x 54.9cm
Capacity	17ℓ	17ℓ
Elec. Spec.	230V / 50Hz / 1400W	230V / 50Hz / 1800W
Add. Info.	#203	#266



MENUMASTER Commercial Microwave Oven MRC22S2

Unique top and bottom energy distribution. Fast even cooking. Consistent results and excellent food quality. Sealed in place ceramic cooking shelf. No spills leak under the oven floor. Easy to clean.

Product Code	04-003-00095(XX) MRC22S2
Dimension	46 x 48.9 x 64.8cm
Capacity	28ℓ
Elec. Spec.	230V / 50Hz / 2200W



MENUMASTER Commercial Microwave Oven RCS511TS

Quick heating. Consistent results. Stainless steel construction inside and out. Durable, professional finish. Withstands the foodservice environment.

Product Code	04-003-00096(XX) RCS511TS
Dimension	35.2 x 55.9 x 48.3cm
Capacity	34ℓ
Elec. Spec.	230V / 50Hz / 1100W



ROLLER GRILL Turbo Quartz Baking Oven with Steam FC110EG

Perfect Baking through Controlled Technology. The Roller Grill FC110EG features a heavy duty turbine with auto reverse function. The integral Quartz/infrared grill is perfect for browning gratinating and grilling of meats etc whilst still benefiting from the circulated air. Push button stream injection(requires water supply) applies a pre-set quantity of water at high temperature enhancing the baking experience.

Product Code	04-003-00114
Dimension	79.5 x 72 x 60cm



ROLLER GRILL Multifunction Turbo Quartz Convection Oven

Unique in catering, the multifunction oven FC60TQ associates :
 - Ventilated air : for homogeneous cooking of different meals at the same time
 - Ventilated pastry oven. The lower armoured heating element is running at full power.
 - Turbo Quartz : traditional oven associating top quartz and bottom armoured heating element to the ventilation system. Cooking time is reduced
 - Quartz grill : ventilated salamander essential to brown, broil or glaze.

Product Code	04-003-00115
Dimension	59.5 x 61 x 59cm Internal: 47 x 37 x 35cm
Capacity	60ℓ / 4 levels
Elec. Spec.	230V / 50Hz / 3000W



ROLLER GRILL Stainless Steel Electric Convection Oven FC380TQ

Supplied with 3 cooking grids, 1 pastry tray. Homogenous cooking ensuring a perfect circulation of air. Reinforced insulation. Associates convection, Turbo Quartz, top quartz grill salamander, ventilated bakery oven and defrosting.

Product Code	04-003-00116
Dimension	55 x 55 x 35.5cm Internal: 41.5 x 35 x 26.5cm
Capacity	38ℓ / 4 levels
Elec. Spec.	230V / 50Hz / 2400W



CUISINART Convection Oven

Stainless steel and industrial style design with 1500 watts capability, and 260 °C temperature range. Precise toast shade dial, tinted glass oven door, 0.6 cu. ft. Nonstick coating covers the interior to make cleaning easy and quick.

Product Code	04-003-00303
Dimension	44 x 29 x 25cm
Capacity	17ℓ
Elec. Spec.	220-240V / 50Hz / 1500W



ROLLER GRILL Stainless Steel Electric Convection Oven FC280

Supplied with 2 cooking grids, 1 pastry tray. Homogenous cooking ensuring a perfect circulation of air. Reinforced insulation.

Product Code	04-003-00118
Dimension	46 x 55 x 35cm Internal: 32 x 32.5 x 26.5cm
Capacity	28ℓ / 2 levels
Elec. Spec.	230V / 50Hz / 1500W



Roast Pig Furnace

Product Code	04-003-00092(XX)
Dimension	110 x 60 x 60cm



LACOR Electric Convection Halogen Glass Oven

Allows you to save time and energy, because the heated volume is much less of a conventional oven and its high efficiency in the movement of hot air inside; compared with conventional ovens energy consumption is reduced by 20% .

Product Code	04-003-00119(XX)
Dimension	41 x 33 x 31cm
Capacity	12ℓ
Elec. Spec.	230V / 50Hz / 1400W



Roast Duck Oven (Gas)

Product Code	04-003-00091(XX)
Dimension	Ø60 x 125cm



ROLLER GRILL Smoking Oven FM2

Smoking is carried out at low temperature to eliminate excess water, without drying out the product or turning it crispy. Smoke is produced by the slow burning of oak sawdust and then gets cooled in the smoke oven to provide even cooking.

Product Code	04-003-00087
Dimension	71.5 x 41.5 x 23cm Cooking Grid: 40 x 60cm
Elec. Spec.	230V / 50Hz / 250W



CCK Metal Stove (Apollo Stove) without Base

Product Code	04-003-00264
Dimension	26.5 x 21.5cm
Add. Info.	Can be used with 04-003-00091(XX)



ROLLER GRILL *Electric Crepe Machine with Enamelled Cast Iron Plate CSE350*

Enamelled cast iron plate produces moist pancakes, buckwheat cakes and more. Also popular in Asian cuisine for preparing Peking duck skins. Drawer for keeping dishes or pre-cooked crepes warm. Spiral heating elements distribute heat evenly, essential when it comes to making the perfect pancake. Includes wooden crepe spreader.

Product Code	04-003-00138
Dimension	50 x 45 x 24cm Crepe Surface: Ø35cm
Elec. Spec.	230V / 50Hz / 3000W



ROLLER GRILL *Electric Crepe Machine with Enamelled Cast Iron Plate CSE400*

Enamelled cast iron plate produces moist pancakes, buckwheat cakes and more. Also popular in Asian cuisine for preparing Peking duck skins. Drawer for keeping dishes or pre-cooked crepes warm. Spiral heating elements distribute heat evenly, essential when it comes to making the perfect pancake. Includes wooden crepe spreader.

Product Code	04-003-00142
Dimension	50 x 45 x 24cm Crepe Surface: Ø40cm
Elec. Spec.	230V / 50Hz / 3600W



ROLLER GRILL *Gas Crepe Machine with Enamelled Cast Iron Plate CSG400*

The key to the great performance of the 400CSG is the specially designed 8 point star shaped burner positioned directly under the plate to distribute the heat evenly, essential when making the perfect crepe.

Product Code	04-003-00145(XX)
Dimension	45 x 50 x 24cm Crepe Surface: Ø40cm
Elec. Spec.	3200W



PRO EQUIP *Mobile Single Crepe Machine*

Product Code	04-003-00141
Dimension	42 x 40 x 13.5cm Crepe Surface: Ø40cm
Elec. Spec.	230V / 50Hz / 2700W



ROLLER GRILL *Mobile Electric Crepe Machine with Enamelled Cast Iron Plate CFE400*

High capacity crepe machines. High power output for outdoor use. Enamelled cast-iron plate 400 mm. Delivered with speler. spiral heating element integrated under the cast iron plate, thermostat 0 to 300°C, pilot light.

Product Code	04-003-00139
Dimension	Ø40 x 20cm
Elec. Spec.	230V / 50Hz / 3600W



ROLLER GRILL *Electric Double Crepe Machine Enamelled Plates*

The sturdy clean design gives the perfect front of house platform for crepes, pancakes, chapatti, blini etc. but also for other menu items, griddled eggs for example. The hard enamelled cast iron plates give good heat retention and provide a smooth, hard wearing cooking surface requiring minimal oil and no pre-seasoning.

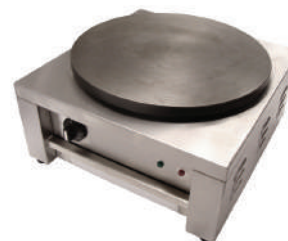
Product Code	04-003-00143(XX) CDE400	04-003-00144(XX) CDG400
Type	Electric	Gas
Elec. Spec.	380V / 50Hz / 7200W	6400W
Dimension	86 x 50 x 24cm Crepe Surface: Ø40cm	



ROLLER GRILL *Mobile Gas Single Crepe Machine with Enamelled Cast Iron Plate CFG400*

The simple design of the 400CFG gives you greater mobility without sacrificing performance. Specially designed with 8 point star shaped burners to distribute heat evenly, essential when making the perfect crepe. The hard enamelled cast iron plates make delicious, moist, golden pancakes but also chapatti, blini etc.

Product Code	04-003-00146(XX)
Dimension	86 x 50 x 24cm Crepe Surface: Ø40cm
Elec. Spec.	3600W



PRO EQUIP *Single Crepe Machine*

Product Code	04-003-00140
Dimension	43 x 44.5 x 23cm Crepe Surface: Ø40cm
Elec. Spec.	230V / 50Hz / 2700W



ROLLER GRILL *Crepe Kit*

A must toolkit for all RollerGrill crepe models. Contains 2 spatulas, 2 wooden T spreader, 1 greasing pad.

Product Code	04-003-00154(XX)
--------------	------------------



ROLLER GRILL *Electric Hot Dog Machine CS3E*

Store up to 40 sausages in the 2-section basket keeping the cooked sausages separate from the uncooked. 3 pads toast the baguette or bun on the inside.

Product Code	04-003-00132	04-003-00133
Dimension	44 x 30 x 40cm Glass Cylinder: Ø20 x 24cm	Basket for CS3E
Elec. Spec.	230V / 50Hz / 650W	



ROLLER GRILL *Electric Sausage Roller RG9*

These roller grills keep up to 20 pre-cooked sausages warm, i.e. 96 hot dogs per hour! Optimal output thanks to 125 W power per roll. Chrome-plated rolls ensure easy cleaning and durability. Length of the rolls: 40 cm.

Product Code	04-003-00136
Dimension	54.5 x 46 x 24cm
Capacity	9 Rolls
Elec. Spec.	230V / 50Hz / 1100W



ROLLER GRILL *Double Waffle Iron*

Highly conductive iron plates spread heat evenly and give golden, crispy waffles in 2.5 minutes. Suitable for cooking fresh or frozen waffles. A removable drip tray surrounding the bottom plate will collect any excess batter. 2 McCain version Liège moulds, featuring 4 x 6 squares (15 x 18 mm) Roller Grill waffle irons accept deep-frozen, frozen precooked waffles or home-made batter. Delivered with fork.

Product Code	04-003-00148(XX)	04-003-00149
Dimension	55 x 44 x 23cm Waffle Size: 10 x 17 x 2.2cm	55 x 44 x 23cm Waffle Size: 10 x 18 x 2.6cm
Elec. Spec.	230V / 50Hz / 3200W	230V / 50Hz / 3200W



ROLLER GRILL *Electric Sausage Bun Warmer CB20*

Keeps buns warm to make hot and soft hot dogs. The drawer can be removed and the GN 2/3 size inner container can be washed in a dishwasher. Place below sausage roller grill to save space.

Product Code	04-003-00134
Dimension	54.5 x 46 x 22cm
Elec. Spec.	230V / 50Hz / 700W



ROLLER GRILL *Electric Sausage Roller RG7*

These roller grills keep up to 20 pre-cooked sausages warm, i.e. 96 hot dogs per hour! Optimal output thanks to 125 W power per roll. Chrome-plated rolls ensure easy cleaning and durability. Length of the rolls: 40 cm.

Product Code	04-003-00135
Dimension	54.5 x 32 x 24cm
Capacity	7 Rolls
Elec. Spec.	230V / 50Hz / 900W



ROLLER GRILL *Single Waffle Iron GES10*

Brussels moulds featuring 3 x 5 squares (20 x 25 mm) Roller Grill waffle irons accept deep-frozen, frozen precooked waffles or home-made batter. Delivered with fork.

Product Code	04-003-00147
Dimension	30.5 x 44 x 23cm Waffle Size: 10 x 17 x 2.2cm
Elec. Spec.	230V / 50Hz / 1600W



ROLLER GRILL *Single Waffle Iron GES20*

McCain version Liège moulds, featuring 4 x 6 squares (15 x 18 mm) Roller Grill waffle irons accept deep-frozen, frozen precooked waffles or home-made batter. Delivered with fork.

Product Code	04-003-00150
Dimension	30.5 x 44 x 23cm Waffle Size: 10 x 18 x 2.6cm
Elec. Spec.	230V / 50Hz / 1600W



ROLLER GRILL Single Waffle Iron Grooved Mould GES40

Grooved mould comes with a wooden cone for making ice-cream cones (squares 8 x 8 mm).

Product Code	04-003-00152
Dimension	30.5 x 44 x 23cm Waffle Size: 25 x 25 x 0.4cm
Elec. Spec.	230V / 50Hz / 1600W



ROLLER GRILL Single Waffle Iron Round Mould GES75

The GES75 Waffle Iron produces circular waffles as an attractive alternative to the traditional rectangle. The cast iron plate features 4 grids each a quarter of a circle 180mm dia, 25mm thick, made up of 10mm squares. The GES75 will produce up to 4 great tasting waffles in just a couple of minutes. The elements are seated beneath both cooking plates giving rapid and even heat across the whole cooking area.

Product Code	04-003-00153
Dimension	30.5 x 44 x 23cm Waffle Size: Ø18.5cm x 2.6cm
Elec. Spec.	230V / 50Hz / 1600W



WARING Heavy-Duty Single Belgian Waffle Maker WW180E

Rotary feature for even baking and browning. Audio beep signals when waffle is ready. Triple-coated non-stick plates allow for easy removal of waffle and quick clean up. Small footprint of double waffle model saves counter space! Makes 17.5cm Belgian-style waffles.

Product Code	04-003-00156
Capacity	25 waffles/h
Elec. Spec.	230V / 50Hz / 1200W



WARING Heavy-Duty Double Belgian Waffle Maker WW200E

Make your breakfast service an experience to remember with the Waring® WW200 Double Belgian Waffle Maker. Its space-saving vertical design cooks two waffles at a time, so you can make up to 50 thick, delicious waffles per hour. Triple-coated nonstick surfaces, heavy-duty, die-cast housing, embedded heating elements and a rotary feature ensure even results and quick cleanup.

Product Code	04-003-00157
Capacity	50 waffles/h
Elec. Spec.	230V / 50Hz / 1400W



ROLLER GRILL Crepe Wheeled Cupboard

This wheeled and stainless steel concept cart can accommodate every kind of appliances to be placed on the work surface. A holed space is meant for the Roller Grill built-in sauce or chocolate warmer WI/DP. Stainless Steel Cabinet base offers a large storage space for all the equipment needs. Lockable through a key lock and sliding doors with integrated handles. Glass sneeze guard. Illuminated display (85x60cm). Includes 2 sockets for connecting device. Cabinet mounted on 4 wheels, 2 with brake system.

Product Code	04-003-00161(XX)
Dimension	100 x 60 x 82.5cm
Elec. Spec.	230V / 50Hz / 40W



ROLLER GRILL Waffle Wheeled Cupboard

Wheeled and stainless steel carts for take-away concepts. The cabinet base has large storage areas with a stainless steel adjustable shelf and it can be locked through a key lock on the sliding doors. Stainless steel cabinet, intermediate shelf, glass sneeze guard, a stainless steel plate, an illuminated display sign is customizable upon request. Switch, 2 sockets for connecting devices, 2 sliding doors with integrated handles and key lock. Cabinet mounted on 4 wheels, 2 with brake system. Delivered with no appliance.

Product Code	04-003-00162(XX)
Dimension	100 x 60 x 82.5cm
Elec. Spec.	230V / 50Hz / 40W



ROLLER GRILL Contact Grill for Sandwich with Grooved Top & Base, Enamel-Coated Cast Iron Heating Plate with Full Stainless Steel Handle PANINI-PREM

The latest innovation in our contact grill range, Le Premium is unique to Roller Grill. Fully equipped through design and technology for outstanding cooking performance, flexible operation and ease of cleaning.

Product Code	04-003-00285
Dimension	40 x 47.5 x 22cm
Elec. Spec.	230V / 3400W
Model Ref.	PANINI-PREM



ROLLER GRILL Electric Contact Grill PANINI-R

Specially designed to cook PANINI. Featuring 5 branch arms covering the wall plate. Fitted with cast iron plates for perfectly high conductive cast-iron plates for perfectly even cooking. The upper plate is self-balanced and the pressure spring is adjustable so you can adapt the cooking to the food. Available with grooved or flat bottom plate for omelettes, fried eggs, savoury pancakes, artich bread, blinis, wrap. Delivered with a scraper.

Product Code	04-003-00169
Dimension	43 x 38.5 x 22cm Cooking surface: 36 x 24cm
Elec. Spec.	230V / 50Hz / 3000W
Model Ref.	PANINI-R



ROLLER GRILL Contact Grill with Grooved On Top Only

Particularly designed for fast-food chains, franchises and all places with high output, the contact-grills enable you to seize in big quantity every kind of sandwiches, hamburgers, steaks etc. and to alternate cooking types between the plates. 2 thermostats 0-300°C. Delivered with a scraper for easy cleaning.

Product Code	04-003-00163	04-003-00165	04-003-00166
Dimension	83.5 x 38.5 x 22cm Cooking Surface: 2 x (36 x 24cm)	41 x 62 x 34cm Cooking Surface: 36 x 36cm	
Size	Double	Single	Single
Elec. Spec.	2 x (230V / 50Hz / 3200W)	230V / 50Hz / 3600W	
Model Ref.	DOUBLE PANINI-L	PANINI-XLR	PANINI-XLL
Type	Grooved on Top Only	Grooved on Top & Base	Grooved on Top Only



ROLLER GRILL Single Contact Grill

The fully adjustable spring and counter balanced top plate will help prevent food being crushed by the weight of the top plate and is fitted with armoured heating elements for perfect heat distribution. The cast iron plates provide a constant even heat making the SAVOYE ideal for cooking steaks, burgers, fish, paninis etc.

Product Code	04-003-00167	04-003-00168
Type	w/ Grooved Top & Base	w/ Grooved Top only
Dimension	38.5 x 33 x 22cm Cooking Surface: 26 x 24cm	
Elec. Spec.	230V / 50Hz / 2000W	
Model Ref.	SAYORE-R	SAYORE-L



ROLLER GRILL Glass Ceramic Single Multi-Grill

The vitroceramic contact-grill was designed for comfort of use and security. The lever system allows a daily use without forcing the top plate of the grill contact. The front of the upper plates avoids the shock between the glass-ceramic plates, once the vitroceramic contact-grill is closed. Both upper-plates are counter-balanced to adapt the professional contract-grill to the thickness of the sandwich to be cooked.

Product Code	04-003-00295	04-003-00296
Dimension	39 x 60 x 26cm	78 x 60 x 26cm
Elec. Spec.	230V / 2500W / 13Amps	230V / 2 x 2500W / 2 x 13Amps
Model Ref.	GVS335	GVD335



Panini Grill with Groove Top Only

Product Code	04-003-00172	04-003-00173
Type	Large	Small
Dimension	38 x 41 x 23cm Cooking Surface: 30 x 38cm	29.5 x 33 x 23cm Cooking Surface: 27 x 25cm
Elec. Spec.	230V / 50Hz / 2400W	230V / 50Hz / 2000W



ROLLER GRILL Electric Steel Enamelled Griddle Plate

The PED700 is a high-performance dual zone electric griddle. Built around a 10mm thick steel cooking plate, it provides a solid cooking platform for your griddle menu; burgers, sausages, eggs etc. Unique 2 Zone heating.

Product Code	04-003-00297
Dimension	40 x 70 x 25cm Cooking Surface: 36.5 x 54.5cm
Elec. Spec.	230-240V / 3500W / 15Amp



ROLLER GRILL Electric Enamelled Steel Griddle Plate

Steel enamelled griddle plate (10mm) to cook meat, bacon, fish, hamburgers, sausages, onions... and also for fried eggs and omelettes. Healthy and quick cooking with the mirror smooth plate for a direct temperature transfer. Built with a Incoloy heating element, for a homogenous temperature on the whole cooking surface. Removable drip tray.

Product Code	04-003-00175	04-003-00180
Dimension	60 x 47.5 x 23cm Cooking Surface: 60 x 40cm	40 x 47.5 x 23cm Cooking Surface: 40 x 40cm
Size	Double	Single
Elec. Spec.	380V / 50Hz / 6000W	230V / 50Hz / 3000W
Model Ref.	PSR600EE	PSR400EE



ROLLER GRILL Electric Griddle Plate

Specific steel griddle plate (10mm) to cook meat, bacon, fish, hamburgers, sausages, onions... and also for fried eggs and omelettes. Healthy and quick cooking with the mirror smooth plate for a direct temperature transfer. Built with a Incoloy heating element, for a homogenous temperature on the whole cooking surface. Removable drip tray.

Product Code	04-003-00176	04-003-00182	04-003-00183(XX)
Add. Info.	With Cast Iron Plate	With Decarbonised Plate	
Dimension	60 x 47.5 x 23cm Cooking surface: 60 x 40cm	40 x 47.5 x 23cm Cooking Surface: 40 x 40cm	
Size	Double	Single	Single
Elec. Spec.	380V / 50Hz / 6000W	230V / 50Hz / 3000W	230V / 50Hz / 3200W
Model Ref.	PSR600E	PSR400E	PSR400G Gas Model



ROLLER GRILL *Single Glass Ceramic Griddle*

Built around our vitro ceramic infrared heating system to bring energy efficient cooking to your kitchen. By cutting the heat up times (230°C in 90 seconds) and halving the overall power this griddle can bring real savings.

Product Code	04-003-00184	04-003-00185
Type	with Flat Plate PS400VCL	with Grooved Plate PS400VCR
Dimension	42 x 42 x 15cm Cooking Surface: 33 x 28cm	
Elec. Spec.	230V / 50Hz / 1500W	



ROLLER GRILL *Electric Grill with Lava Rock*

10 temperature control settings. Electric lava rock grill for natural, healthy, tasty and easy-to-digest grills. Lava rock reacts in the same way as wood embers, spreading the heat evenly across the cooking surface and absorbing the fats. Alternate fish, meat, sausages, etc. without transmission of taste or smell. Easy to clean: Lava rocks can be washed in dishwasher, control-box is removable and lava tray is enamelled. 1pkt of lava rock included.

Product Code	04-003-00187(XX)	04-003-00188
Dimension	59 x 50 x 30.5cm	30 x 54.5 x 16cm
Size	Double	Single
Elec. Spec.	2 x (230V / 50Hz / 2500W)	230V / 50Hz / 2500W
Model Ref.	140D	140



RINNAI *Stainless Steel Single Infrared Grill*

High Temperature Resistant Stainless Steel. Rapid And Efficient Grilling With Powerful Infra-Red Burners.

Product Code	04-003-00197(XX)	04-003-00196(XX)
Type	LPG	Town Gas
Dimension	60.7 x 21 x 21.6cm	
Elec. Spec.	2500W	



PRO EQUIP *Electric Griddle with Flat Steel Top*

Product Code	04-003-00179
Dimension	60.5 x 52 x 26.5cm Cooking Surface: 60 x 40cm
Elec. Spec.	380V / 50Hz / 2800W



PRO EQUIP *Electric Grill with Flat Cast Iron Top*

Product Code	04-003-00186
Dimension	45 x 44.5 x 22cm Cooking Surface: 38 x 38cm
Temp.	Max temp 300°C
Elec. Spec.	230V / 50Hz / 2800W



CROWN *Stainless Steel BBQ Stove / Griller SW680*

Full stainless steel body. Adjustable temperature control. Removable & washable oil tray.

Product Code	04-003-00191
Dimension	70 x 36 x 14cm Cooking Surface: 55 x 31cm
Elec. Spec.	230V / 50Hz / 2 x 1500W



CROWN *Stainless Steel BBQ Stove / Griller SW200*

Full stainless steel body. Adjustable temperature control. Removable & washable oil tray.

Product Code	04-003-00192
Dimension	70 x 20 x 14cm Cooking Surface: 55 x 15cm
Elec. Spec.	230V / 50Hz / 2500W



ROLLER GRILL *Gas Gyros (Kebab) Grill*

Gas models are fitted with 2 till 4 infrared burners with safety thermocouple and independent controls with slow setting. LPG type.

Product Code	04-003-00203(XX)
Dimension	58 x 66 x 64.5cm Spit Ht. 40cm
Capacity	For 15kg Meat

ACCESSORIES

- *Accessories available upon request*



ROLLER GRILL *Electric Gyros (Kebab) Grill*

Electric models are equipped with 3, 4 or 5 Incoloy heating elements with independent regulation, half or full power and fire stones to accumulate the heat. The bottom plate is fully hermetic: the motor is protected from any infiltration of fat or juice of meat.

Product Code	04-003-00200(XX)	04-003-00201	04-003-00202
Dimension	58 x 66 x 104.5cm Spit Ht. 80cm	58 x 66 x 87cm Spit Ht. 60cm	58 x 66 x 69.5cm Spit Ht. 40cm
Capacity	For 40kg Meat	For 25kg Meat	For 15kg Meat
Elec. Spec.	380V / 50Hz / 7200W	380V / 50Hz / 5800W	380V / 50Hz / 3600W
Model Ref.	GR80E	GR60E	GR40E

ACCESSORIES

- *Accessories available upon request*



CROWN Stainless Steel Electric Water Urn

Brilliant polished stainless steel finishing. All-welded construction. Rolled edges for added strength. Non-drip heavy duty tap. U.K. thermostat control switch. High quality insulated handles. With Indicator light.

Product Code	04-003-00217	04-003-00218	04-003-00219	04-003-00220
Dimension	Ø32 x 49.5cm	Ø30 x 49.5cm	Ø30 x 43cm	Ø25.5 x 34.5cm
Capacity	40ℓ	30ℓ	20ℓ	10ℓ
Elec. Spec.	230V / 50Hz / 2500W	230V / 50Hz / 2500W	230V / 50Hz / 2500W	230V / 50Hz / 2500W
Add. Info	Max. heat setting 110°C	Max. heat setting 110°C	Max. heat setting 110°C	Max. heat setting 110°C



MISTRAL Electric Thermal Airpot

Auto re-boil and keep warm. Removable top cover for easy cleaning. Dry boil protection. Stainless steel inner pot. Stainless steel body. 360° swivel base.

Product Code	04-003-00222	04-003-00223
Capacity	5ℓ	3.8ℓ
Elec. Spec.	230V / 50Hz / 750W	
Model Ref.	MAP520	MAP380



LACOR Electric Airpot

Newly designed electric drinks dispenser with tap Airpot Lacor with dimensions ideal for coupling in restaurants with buffet, in meeting rooms, events or in any corner of your office. It is the best option to enjoy coffee, water or tea always at the desired temperature by having the possibility to adjust the temperature of the drinks.

Product Code	04-003-00286	04-003-00287
Capacity	6ℓ	10ℓ
Elec. Spec.	220-240V / 50-60Hz / 1500W	



CCK Stainless Steel Wall Mount Electric Water Boiler

Product Code	04-003-00215	04-003-00216
Dimension	38 x 24 x 73cm	34 x 21 x 55.5cm
Capacity	37.8ℓ	22.7ℓ
Elec. Spec.	230V / 50Hz / 3000W	



RINNAI Gas Automatic Rice Cooker (3-Deck)

Various Modes For Rice Cooking (Normal, Cereals, Porridge). Various Settings For Individual Tier. Digitalized Function. Self Diagnosis Function. Flame Failure Safety Device.

Product Code	04-003-00237(XX)
Dimension	70 x 72.7 x 125cm
Elec. Spec.	33700W



CROWN Non-Stick Electric Rice Cooker

Full bottom contact heating element. Full thermostatic control. Overheat safety control. Easy push-button operation. Durable insulated handles. Rice pot is washable & easy to clean. Available in different capacities to suit your cooking needs.

Product Code	04-003-00228	04-003-00229	04-003-00230	04-003-00231	04-003-00232
Dimension	Ø50 x 29cm	Ø60 x 35cm	Ø45 x 38cm	Ø45 x 32cm	Ø37 x 32cm
Capacity	12ℓ	10ℓ	8ℓ	6ℓ	4ℓ
Serving Size	70pax	50pax 55cups	40pax 45cups	30pax 30 cups	25pax 23cups
Elec. Spec.	230V / 50Hz / 3000W	230V / 50Hz / 2600W	230V / 50Hz / 2300W	230V / 50Hz / 1950W	230V / 50Hz / 1550W
Model Ref.	ER70A	ER50A	ER40A	ER30A	ER25A



CROWN Gas Rice Cooker RR50A

Rice pot is washable and easy to clean. Available for LP and Town gas. Heat-resistance glass for burner protection.

Product Code	04-003-00226	04-003-00227
Type	LPG	Town Gas
Dimension	52.4 x 48 x 42cm	
Capacity	9ℓ	
Elec. Spec.	230V / 50Hz / 2300W	

CROWN Stainless Steel Electric Rice Cooker / Warmer

2-in-1 rice cooker and rice warmer. Non-stick inner pot. Automatic keep-warm function.

Product Code	04-003-00234	04-003-00233
Dimension	Ø39 x 35cm	Ø42 x 35cm
Capacity	6ℓ	8ℓ
Elec. Spec.	230V / 50Hz / 1950W	230V / 50Hz / 2300W
Model Ref.	SW6800-S	SW8800-S



CROWN Wooden Design Rice Warmer S-8000

Automatic keep-warm function. Available in wooden brown or stainless steel finishing.

Product Code	04-004-00018
Dimension	Ø35 x 46cm
Capacity	8ℓ
Elec. Spec.	220V / 50-60Hz / 92W

CROWN Stainless Steel Rice Warmer

Automatic keep-warm function. Available in wooden brown or stainless steel finishing.

Product Code	04-004-00019	04-003-00236
Dimension	Ø35 x 46cm	Ø46 x 42cm
Capacity	8ℓ	9ℓ
Elec. Spec.	220V / 50Hz / 100W	230V / 50Hz / 100W
Model Ref.	S8000-S	SW9800-S



PANASONIC Rice Cooker

5 hours keep warm. Stainless steel lid with aluminium. Built-in thermal safety fuse.

Product Code	04-003-00301
Dimension	Int Ø32 x Ext Ø38 x Ht 33 cm
Capacity	3.6ℓ
Elec. Spec.	450W



PANASONIC Rice Cooker

5 hours keep warm. Stainless steel lid with aluminium. Built-in thermal safety fuse. Auto shut-off function.

Product Code	04-003-00299
Dimension	Int Ø36 x Ext Ø45 x Ht 33cm
Capacity	4.2ℓ
Elec. Spec.	1400W



PANASONIC Rice Cooker

5 hours keep warm. Stainless steel lid with aluminium. Built-in thermal safety fuse. Auto shut-off function.

Product Code	04-003-00300
Dimension	Int Ø47 x Ext Ø60 x Ht 36cm
Capacity	7.2ℓ
Elec. Spec.	220-240V / 50Hz / 2500W



CORNELL Slow Cooker CSC150

Suitable for slow cooking, soup, porridge, dessert & stewing. Comes with auto cooking function, removable pot for easy cleaning, tempered glass lid.

Product Code	04-003-00246
Dimension	23 x 24cm
Capacity	1.5ℓ
Elec. Spec.	230V / 50Hz / 200W



ROLLER GRILL Double Induction Cooker

Two independently controlled induction zones; 20 pre-set digital control; digital timer; 4mm thick vitro ceramic glass plate.

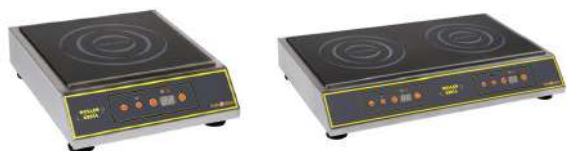
Product Code	04-003-00298
Dimension	40 x 70 x 19.5cm
Elec. Spec.	230-240V / 2 x 3000W / 2 x 13Amps



ROLLER GRILL Digital Chocolate Induction Cooker

At 4mm thick the glass plate will support up to 20Kg and is protected with a steel bar along it's front. 20 pre-set digital control; digital timer; 4mm thick vitro ceramic glass plate.

Product Code	04-003-00278
Dimension	31.5 x 38 x 10.2cm
Elec. Spec.	230-240V / 2500W



ROLLER GRILL Digital Induction Cooker

Rated to run at full power for up to 8 hours without cutting out. 20 pre-set digital control; digital timer; 4 mm thick vitro ceramic glass plate.

Product Code	04-003-00279	04-003-00280
Dimension	31.5 x 38 x 10.2cm	59 x 38 x 10.2cm
Elec. Spec.	230-240V / 3000W	230-240V / 2 x 3000W
Size	Single	Double



ROLLER GRILL Digital Induction Wok with Pan

Fitted with a steel rim to both support the pan and protect the glass. 20 pre-set digital control; digital timer; 4mm thick vitro ceramic glass bowl.

Product Code	04-003-00281
Dimension	39 x 43 x 16.5cm Wok Diameter: Ø30cm
Elec. Spec.	230-240V / 3000W



SAFICO PRO Drop-In Single Hob Digital Induction Stove

Suitable for built in buffet display or cooking. 9 heating power levels available or selection with power settings.

Product Code	04-003-00250
Dimension	32 x 32 x 5.3cm Cooking Surface: 32 x 32cm
Temp.	70-220°C
Elec. Spec.	230V / 50Hz / 1800W



SAFICO PRO Drop-In Single Hob Induction Stove

Rotary power control. 16 level power setting. 20 level temperature holding.

Product Code	04-003-00252
Dimension	38.5 x 85.5 x 17.8 cm
Elec. Spec.	230V / 50Hz / 2800W



SAFICO PRO Counter-Top Single Hob Induction Wok Stove

Rotary power control. 16 level power setting.

Product Code	04-003-00253
Elec. Spec.	230V / 50Hz / 2800W

ACCESSORIES:

- Wok for Induction Work #CW-28A: 01-001-01160



SAFICO PRO Counter-Top Single Hob Digital Induction Stove

Glass touch control. 11 level power setting. Temperature holding from 40 - 220 c (5c / level). Timer. Safety lock. External RF sensor (optional).

Product Code	04-003-00254
Dimension	32.8 x 45 x 11cm
Elec. Spec.	230V / 50Hz / 2800W



SAFICO PRO Counter-Top Single Hob Induction Stove

Rotary power control. 9 level power setting. 5 level temperature holding.

Product Code	04-003-00255
Dimension	32.8 x 42.2 x 10.5 cm
Elec. Spec.	230V / 50Hz / 2800W



Induction Stove

Product Code	04-003-00289
Dimension	39.5 x 33.8 x 11.7cm
Elec. Spec.	220-240V / 50-60Hz / 3000W



Induction Stove with Touch Sensor

Product Code	04-003-00257
Dimension	29 x 36 x 7cm
Elec. Spec.	230V / 50Hz / 1800W



MISTRAL Induction Stove / Cooker with Pot

Mistral Induction Cooker gives the maximum value out of its extremely useful features. Its amazing futuristic design is made out of only the finest material to ensure top grade quality.

Product Code	04-003-00302
Elec. Spec.	220-240V / 50Hz / 3000W



CROWN Electric 2-Tier Steamer SW80

Stainless steel finishing. Adjustable temperature control. Indicator light. Easy removable tiers. Steams food to perfection. Safe & easy to maintain.

Product Code	04-003-00244
Dimension	Ø45 x 62cm
Capacity	20l
Elec. Spec.	230V / 50Hz / 3000W



CROWN 4 Ring Cast Iron Burner (LPG) A40

Product Code	04-003-00259
Add. Info.	3 Rings



CROWN 2 Ring Cast Iron Burner (LPG) A30

Product Code	04-003-00260
Add. Info.	2 Rings



CROWN High Pressure Cast Iron Burner (LPG) 5B

Product Code	04-003-00261
Dimension	Ø34cm
Add. Info.	5 Rings



CROWN High Pressure Cast Iron Burner (LPG) 2B

Product Code	04-003-00262
Dimension	Ø22cm
Add. Info.	2 Rings



LACOR Burner without Stand

Product Code	04-003-00267(XX)	04-002-00268(XX)	04-002-00269(XX)
Dimension	Ø30cm	Ø50cm	Ø70cm
Add. Info.	1 Ring		



Aluminium Satay Stove

Product Code	04-003-00275
Dimension	65 x 20 x 14cm



Japanese Stove

Product Code	04-003-00276
Dimension	30.5cm



ROLLER GRILL Proofing Cabinet EP800

Proofer to make the dough rise during 2 hours at 29°C. The steam production is automatically preset in time and quantity. Electrovalves for humidification. Interior in stainless steel. Proofer mounted on 4 castors with brakes system. Grids not included.

Product Code	04-003-00272(XX)
Dimension	79.5 x 64 x 91cm Inside Dimension: 60 x 54.5 x 68cm 8 Levels
Elec. Spec.	230V / 50Hz / 1400W



PRO EQUIP Double Bain Marie

Product Code	04-004-00002
Dimension	67.6 x 56.5 x 26cm
Capacity	2 x 24ℓ Max Heat Setting 80°C
Elec. Spec.	230V / 50W / 3000W
Add. Info.	GN 2 x 1/1 Size



LACOR Stainless Steel Electric Bain Marie

Cooking technique suitable for melting delicate foods (chocolate), curdling traditional desserts (flan, pudding) or savory pastries (pate, fish cake), pre-prepare canning and making delicate sauces. In professional use, in addition, bath keeps hot prepared foods or sauces until serving time.

Product Code	04-004-00005
Dimension	53 x 35 x 25cm
Capacity	24ℓ 70°C
Elec. Spec.	230V / 50W / 1200W
Add. Info.	GN 1/1 Size



IWATANI Portable Gas Cooker ZA3

Automatic safety stop. Safety container setting device. Safety joint. Drip pan reversal prevention mechanism. Uses standard 8 oz butane canister (Sold separately)

Product Code	04-003-00277
--------------	--------------



PRO EQUIP Single Bain Marie

Product Code	04-004-00004
Dimension	35.5 x 56.5 x 26cm
Capacity	24ℓ Max Heat Setting 80°C
Elec. Spec.	230V / 50W / 1500W
Add. Info.	GN 1/1 Size



Stainless Steel Electric Bain Marie, Economy

Product Code	04-004-00006
Dimension	59 x 35 x 28cm
Capacity	24ℓ
Elec. Spec.	230V / 50W / 1200W
Add. Info.	GN 1/1 Size



CCK Electric 3-Compartment Sauce Warmer / Bain Marie

Product Code	04-004-00007
Dimension	47 x 37 x 27cm
Capacity	26ℓ Max Heat Setting 110°C
Elec. Spec.	230V / 50W / 2000W
Add. Info.	(1/2+2x1/6) OR (1/2+1x1/3) size



CCK Electric 3-Compartment Sauce Warmer / Bain Marie

Product Code	04-004-00008
Dimension	50 x 21 x 30cm
Capacity	25l Max Heat Setting 110°C
Elec. Spec.	230V / 50W / 2000W
Add. Info.	GN 2 x 1/4 + 1 x 1/3 Size



CCK Electric 4-Compartment Sauce Warmer / Bain Marie

Product Code	04-004-00009
Dimension	47 x 36 x 34cm
Capacity	20l Max Heat Setting 110°C
Elec. Spec.	230V / 50W / 800W
Add. Info.	GN 1/2 + 1/3 size



CCK Electric GN 1/1 Sauce Warmer / Bain Marie

Product Code	04-004-00010
Dimension	54 x 34 x 36cm
Capacity	24l Max Heat Setting 110°C
Elec. Spec.	230V / 50W / 2000W
Add. Info.	GN 1/1 Size



CCK Electric 2-Compartment Sauce Warmer / Bain Marie

Product Code	04-004-00011
Dimension	27 x 22.5 x 32.3cm
Capacity	25l Max Heat Setting 110°C
Elec. Spec.	230V / 50W / 2000W
Add. Info.	GN 1 x 1/2 OR 2 x 1/4 Size



CCK Electric 3-Compartment Sauce Warmer / Bain Marie

Product Code	04-004-00012
Dimension	51 x 21 x 30cm
Capacity	40l Max Heat Setting 110°C
Elec. Spec.	230V / 50W / 2000W
Add. Info.	GN 3 x 1/6 Size



ROLLER GRILL Electric Double Free Standing Warm It Machine

The double electric warmer WI / 2 is a table-top warmer fitted with 2 black protective shells and a removable display for a pot of jam, honey or spread. This chocolate or sauce warmer can heat up 2 pressure bottles in the same time without bain-marie function.

Product Code	04-004-00015(XX)
Dimension	31 x 21 x 25cm
Capacity	2 x 1l
Elec. Spec.	230V / 50W / 340W



Electric Soup Warmer

Product Code	04-004-00022
Dimension	Ø26 x 35cm
Capacity	5.7l
Elec. Spec.	230V / 50W / 300W



Stainless Steel Electric Soup Warmer

Product Code	04-004-00023
Dimension	Ø26 x 35cm
Capacity	5.7l
Elec. Spec.	230V / 50W / 300W



Stainless Steel Electric Soup Warmer

Product Code	04-004-00024
Dimension	Ø42 x 38cm
Capacity	10l
Elec. Spec.	230V / 50W / 450W



CROWN Stainless Steel Twin Coffee Warmer SW22

High efficiency and energy saving. Non-stick support plate. Safe & easy to maintain. Keep-warm function only.

Product Code	04-004-00031
Dimension	38 x 18cm
Elec. Spec.	230V / 50W / 2 x 100W



JUKI Single Hot Plate

Product Code	04-002-00344
Dimension	26cm
Elec. Spec.	220-240V / 50W / 1250-1500W



JUKI Double Hot Plate

Product Code	04-002-00345
Dimension	47cm
Elec. Spec.	220-240V / 50W / 1900-2250W



LACOR Stainless Steel GN 1/1 Warming Plate with Ceramic Top

It has a thermostat adjustable in temperature, thermo-insulating handles on the sides for a better safe movement and non-slip plugs.

Product Code	04-004-00035
Dimension	55 x 35 x 4.5cm
Temp.	Up to 80°C
Elec. Spec.	230V / 50W / 230W



PRO EQUIP Glass Warmer with Stainless Frame for GN 1/1

Product Code	04-004-00036
Dimension	48 x 40 x 7.5cm
Temp.	40-90°C
Elec. Spec.	230V / 50W / 450W



PRO EQUIP Glass Warmer with Stainless Frame for GN 2/1

Product Code	04-004-00040
Dimension	70.5 x 58 x 7.5cm
Temp.	40-90°C
Elec. Spec.	230V / 50W / 450W



PRO EQUIP Stainless Steel Electric Warming Plate

Product Code	04-004-00037	04-004-00038	04-004-00039
Dimension	53 x 32.5cm	32.5 x 26.5cm	32.5 x 17.6cm
Temp	40-100°C	40-100°C	40-100°C
Elec. Spec.	230V / 50Hz / 450W	230V / 50Hz / 300W	230V / 50Hz / 200W
Add. Info.	For GN 1/1	For GN 1/2	For GN 1/3



Two Door Hot & Cold Towel Warmer HC-140

Product Code	04-004-00042
Dimension	45 x 31 x 60cm
Capacity	For 140 Towels



Hot & Cold Towel Warmer HC-70

Product Code	04-004-00046
Dimension	45 x 28.5 x 33cm
Capacity	For 70 Towels



Towel Warmer

Product Code	04-004-00044	04-004-00045
Dimension	45 x 28.5 x 33cm	42.5 x 28.5 x 27.5cm
Capacity	For 70 Towels	For 50 Towels



Two Door Towel Warmer CN-140

Product Code	04-004-00043
Dimension	45 x 31 x 60cm
Capacity	For 140 Towels



NEMOX Ice Cube Maker Ice Cube Tech

Produces Ice cubes. Makes 12 ice cubes (10-15g) in app. 6-10minutes. Daily output is about 15kg.

Product Code	04-005-00001
Dimension	36 x 39.5 x 41.5cm
Temp.	Collecting Capacity: 1.5kg (app. 80ice cubes) Water Tank: 4.5ℓ
Elec. Spec.	230V / 50Hz / 150W



NEMOX Shock Freezer Freezy

Essential instruments to grant the best food preservation in the most natural way. SOFT and HARD blast-chilling cycles and shock-freezing cycle are regulated by temperature with the use of a core-probe or by time setting.

The electronic control board is easy to operate. The construction of these appliances is completely in stainless steel AISI 304, as are the grates and supports which can be easily disassembled.

Product Code	04-005-00002(XX) Freezy 5	04-005-00003(XX) Freezy 9
Dimension	59.5 x 61 x 38.5cm Internal Dimension: 34 x 36.4 x 26.7cm	59.5 x 70 x 89.5cm Internal Dimension: 41.2 x 61 x 43cm
Capacity	35ℓ 3 x G/N 2/3 Trays	110ℓ 6 x G/N 1/1 Trays
Elec. Spec.	230V / 50W / 218W	230V / 50W / 600W



NEMOX Gelato and Ice Cream Display Freezer 7 Magic Pro

- Internal storage compartment with its own temperature control
- Curved display canopy for safety, hygiene and visual effect
 - Easy clean condenser design for better protection: less condensation,
 - less rust, less humidity - even in tropical climates
 - Digital temperature display
 - Castors for easy positioning
 - Corrosion resistant construction and equipped with defrost water drain

Product Code	04-006-00001(XX)
Dimension	131.4 x 70.2 x 116.5cm Internal Dimension: 119 x 41.57 x 5l
Elec. Spec.	230V / 50W / 730W



ROLLER GRILL Stainless Steel Merchandiser Refrigerated Display VVF800

Fits 2 x GN 1/1 tray and 2 60x40cm tray. The right equipment to keep fresh your salads, fresh sandwiches, yoghurts, desserts, beverage. The ventilated refrigerated group is warranting an inside temperature of +4 +10° C (at an ambient temperature of 29°C) and an automatic defrosting system. White-cold LED lighting. Tray not included.

Product Code	04-006-00005
Dimension	80 x 73 x 60cm Internal Dimension: 65 x 55 x 29.5cm 2 levels
Elec. Spec.	230V / 50Hz / 350W



ROLLER GRILL Stainless Steel Horizontal Refrigerated Display with LED Light CD800

Product Code	04-006-00032
Dimension	80 x 73 x 60cm 2 x 1/1 GN & 2 Glass Shelves
Elec. Spec.	0.35kW, +2° to +10°C



ROLLER GRILL Stainless Steel Horizontal Refrigerated Display with LED Light CD1200

Product Code	04-006-00034
Dimension	118.5 x 65 x 73.5cm 3 x 1/1 GN & 2 Glass Shelves
Elec. Spec.	0.35kW, +2° to +10°C



ROLLER GRILL Electric Ventilated Positive Cold Display with Fixed Grids RD60F

Positive cold refrigerated display cabinets keep pies, fruit salads or drinks at right temperature of +2°C to + 10°C. Negative refrigerated display cabinets keep your ice creams and frozen desserts between -5°C and -20°C

Product Code	04-006-00006(XX)	04-006-00007(XX)	04-006-00008(XX)
Type	Postive Cold Display With Fixed Grids	Positive Cold Display With Turning Plates	Negative Cold Display With Turning Plates
Dimension	60 x 63 x 185cm Inside dimension: 54.5 x 54.5 x 120cm	60 x 63 x 185cm Inside dimension: 54.5 x 54.5 x 120cm	60 x 63 x 185cm Inside dimension: 54.5 x 54.5 x 120cm
Capacity	360l	360l	360l
Elec. Spec.	230V / 50Hz / 690W	230V / 50Hz / 690W	230V / 50Hz / 800W



ROLLER GRILL *Stainless Steel Ventilated Warming Display WD780DI*

Very easy to use and to clean. The rear glass doors open at 180 ° C for the loading of the professional showcase and for the service. The grids and their supports, the stainless steel lower tray, the water drawer and the firestone are completely removable.

Product Code	04-006-00010
Dimension	78 x 49 x 64cm
Capacity	60 x 40cm trays / 5 Levels
Elec. Spec.	230V / 50W / 1800W
Add. Info.	Comes with 2 grids



ROLLER GRILL *Stainless Steel Ventilated Warming Display WD780SI*

This ventilated heated showcase, equipped with 4 LED ramps, highlights and keeps warm in quantities quiches, pizzas, fondues, meatballs, pastries and so on.

Product Code	04-006-00011
Dimension	78 x 49 x 48cm
Capacity	60 x 40cm trays / 3 Levels
Elec. Spec.	230V / 50W / 1200W
Add. Info.	Comes with 2 grids



ROLLER GRILL *Counter Top Warming Display WDL200*

This stylish compact cabinet will still accommodate a 1/1GN tray on both shelves and provide a thermostatically controlled humidified display for pastries croissants pies and pasties. The upper light box will promote your products and the graphic can be changed to match your menu. Efficient and practical with front and rear opening.

Product Code	04-006-00012
Dimension	59 x 35 x 48cm Internal Dimension: 2 x (54 x 33 x 12.5) cm
Capacity	Fits 2 x GN 1/1 Tray
Elec. Spec.	230V / 50W / 650W



ROLLER GRILL *Counter Top Warming Display WDL100*

Keep products at a constant temperature of 20-95°C. Equipped with top illuminated display sign, and water container for humidity control to keep products moist and delicious. Removable stainless steel presentation tray with top section in glass for easy cleaning and maintenance Tray not included.

Product Code	04-006-00013
Dimension	59 x 35 x 37.5cm Internal Dimension: 54 x 33 x 16.5cm
Capacity	Fits GN 1/1 Tray
Elec. Spec.	230V / 50Hz / 650W



ROLLER GRILL *Stainless Steel Heat Up Display with Glass Shelves*

Precise temperature control with an electronic thermostat. Humidity control, ensuring the maintenance of humidity and taste of products. LED backlight. Inner glass shelves. Rear sliding door.

Product Code	04-006-00033
Dimension	78.5 x 67.5 x 72cm
Capacity	2 Levels
Elec. Spec.	230V / 3000W / 13Amps



ROLLER GRILL *Stainless Steel Heat Up Display 2 Levels with Glass Shelves HD1200-BK*

Precise temperature control with an electronic thermostat. Humidity control, ensuring the maintenance of humidity and taste of products. LED backlight. Inner glass shelves. Rear sliding door.

Product Code	04-006-00035
Dimension	118.5 x 65 x 73.5cm
Capacity	2 Levels, 3 x GN1/1 & 3 x GN1/1
Elec. Spec.	230V / 3000W / 13Amps



ROLLER GRILL *Ventilated Warming Display VHC1000*

Designed for takeaways, markets, kiosks, convenience stores, butchers, market stalls, offers a very good display surface. Modular and panoramic, this display is made up of 2 removable sections: the heating unit and the display cabinet assembled by a system of rollers. Both warming and refrigerating units can be changed with the front display. 2 front and 1 rear liftable door and a removable service tray make loading, serving and cleaning easy. To keep ready-made dishes, starters, main courses at a constant Temperature (+20/+10°C). Pulsed air convection system. LED lights. Tray not included.

Product Code	04-006-00009
Dimension	100 x 72 x 47.5cm Inside dimension: 96 x 53.5 x 28cm Shelf: 96 x 30cm
Capacity	For 3 GN 1/1
Elec. Spec.	230V / 50Hz / 2400W



04-006-00018(XX)



04-006-00019(XX)

SPM Soft Serve Ice Cream, Yoghurt, Slush Machine

For dispensing creamy ice cream soft and delicious frozen yogurt with an exceptional quality.

Product Code	04-006-00018(XX)	04-006-00019(XX)
Model No.	GT Push 1	GT Push 2
Dimension	26 x 43 x 65cm	45 x 43.5 x 65cm
Capacity	5ℓ	2 x 5ℓ
Elec. Spec.	230V / 50Hz / 350W	230V / 50Hz / 750W



04-006-00025(XX)



04-006-00026(XX)

SPM Soft Serve Ice Cream, Yoghurt, Slush Machine

Small, lightweight, revolutionary, NINA is the mini dispenser for creams and other cold dishes.

Product Code	04-006-00025(XX)	04-006-00026(XX)
Model No.	Nina 1	Nina 2
Dimension	13 x 37.5 x 45.5cm	28 x 38.8 x 47.8cm
Capacity	2ℓ	2 x 2ℓ
Elec. Spec.	230V / 50Hz / 270W	230V / 50Hz / 500W



SPM Soft Serve Ice Cream, Yoghurt, Slush Dispenser GT Lab

Compact, practical and touch-controlled, the GT LAB is the latest development in the field of small machines allowing to produce and deliver ice-cream in tubs, like in ice-cream shops.

Product Code	04-006-00017(XX)
Dimension	26 x 43 x 65cm
Capacity	5ℓ
Elec. Spec.	230V / 50Hz / 350W

- **Container Sold Separately**



04-006-00020(XX)



04-006-00021(XX)

SPM Soft Serve Ice Cream, Yoghurt, Slush Machine

GT Touch delivers up to 5 products and is easy to use with exclusive interactive touch screen.

Product Code	04-006-00020(XX)	04-006-00021(XX)
Model No.	GT Touch 1	GT Touch 2
Dimension	26 x 43 x 65cm	45 x 44 x 65cm
Capacity	5ℓ	2 x 5ℓ
Elec. Spec.	230V / 50Hz / 350W	230V / 50Hz / 750W



SPM Soft Serve Ice Cream, Yoghurt, Slush Machine

A control light warns the operator when the product inside the machine reaches the minimum level and it's necessary to fill it up. U-Go is easy to use, to clean and to assemble.

Product Code	04-006-00030(XX)	04-006-00031(XX)
Model No.	U Go Gravity	U Go Pump
Dimension	35.7 x 52.12 x 60cm	35.7 x 52.12 x 60cm
Capacity	Hooper: 7ℓ Cylinder: 2.3ℓ 120cones/h	Hooper: 7ℓ Cylinder: 2.3ℓ 170cones/h
Elec. Spec.	230V / 50Hz / 1000W	230V / 50Hz / 1050W



04-006-00022(XX)



04-006-00023(XX)



04-006-00024(XX)

SPM Slush Machine IP1 Mechanical

The unique insulation bath I-TANK™ technology, integrated with the manual control system. The exclusive insulated bowls powered by i-Tank™ technology minimizes the influence of external temperature, increases the cooling power and enhances product consistency. It reduces condensation on the outer bowl enhancing the product attractiveness.

Product Code	04-006-00022(XX)	04-006-00023(XX)	04-006-00024(XX)
Model No.	IP1 Mechanical	IP2 Mechanical	IP3 Mechanical
Dimension	20 x 58 x 87cm	40 x 58 x 87cm	60 x 58 x 87cm
Capacity	11ℓ	2 x 11ℓ	3 x 11ℓ
Elec. Spec.	230V / 50Hz / 500W	230V / 50Hz / 980W	230V / 50Hz / 1420W



04-006-00027(XX)



04-006-00028(XX)



04-006-00029(XX)

SPM Soft Serve Ice Cream, Yoghurt, Slush Machine SP1

Bench compact machine for dispensing cold creams, sorbets and other creamy dishes. SP is compact and features an elegant design, as well as rounded shapes with stainless steel finishing and white or black finishes. It is easy to clean and user-friendly, and all the components which come into contact with the products can be removed without having to use any tools.

Product Code	04-006-00027(XX)	04-006-00028(XX)	04-006-00029(XX)
Model No.	SP1	SP2	SP3
Dimension	26 x 43 x 61cm	45 x 44 x 61cm	63 x 45 x 61cm
Capacity	5ℓ	2 x 5ℓ	3 x 5ℓ
Elec. Spec.	230V / 50Hz / 350W	230V / 50Hz / 500W	230V / 50Hz / 1000W



04-006-00014



04-006-00015



04-006-00016

SANTOS Cold Drink Dispenser Tank 34

Reliable refrigeration system: Wide air-cooling condenser to continuously chill the drinks. High pressure hermetically sealed compressor giving the guarantee of a high quality, efficient and long-lasting appliance. Compressor designed for tropical countries.

Thermostat controlled. Stirring paddle to avoid foaming and oxidation. High quality compressor. Accepts fruit pieces. Stainless steel body.

Product Code	04-006-00014	04-006-00015	04-006-00016
Type	Single	Double	Triple
Dimension	43 x 19 x 54.5cm	43 x 38 x 54.5cm	43 x 57 x 54.5cm
Capacity	1 x 12ℓ	2 x 12ℓ	3 x 12ℓ
Elec. Spec.	230V / 50W / 260W	230V / 50W / 260W	230V / 50W / 330W