

CATALOGUE OF THE SYLVIA SLEIGH COLLECTION
ROWAN UNIVERSITY ART GALLERY



Abish, Cecile (b. 1930)
Boxed Monuments 3, 1969
Paper, plastic, corrugated cardboard; edition 15/500
6¼ × 15¾ × 4¾ in. (closed); 6¼ × 15¾ × 17¾ in. (open)
Sylvia Sleigh Collection (2011.93)



Abish, Cecile (b. 1930)
Study for Declination, 1975
Kraft paper, graphite, clear tape, vinyl, black marker, and staples on corrugated cardboard
15 × 20 in.
Sylvia Sleigh Collection (2011.1)



Abrons, Anne (b. 1950)
Self-Portrait with Amy, 1981
Oil on canvas
60 × 36 in.
Sylvia Sleigh Collection (2011.3)

CATALOGUE OF THE SYLVIA SLEIGH COLLECTION
ROWAN UNIVERSITY ART GALLERY



Adams, Pat (b. 1928)
Tetrad, 1961
Lithograph, proof
24 $\frac{5}{8}$ × 20 in. (sheet); 18 $\frac{1}{4}$ × 15 in. (impression)
Sylvia Sleigh Collection (2011.47)



Attie, Dotty (b. 1938)
The Scoutmaster's Return, 1975
Four color lithographs on paper, edition 22/30
Each approx.. 12 × 10 in. (sheet); 10 $\frac{7}{8}$ × 9 in. (impression)
Sylvia Sleigh Collection (2011.2A-D)



Aylon, Helène (b. 1931)
Painting that Changes in Time, 1974
Linseed oil on Masonite under Plexiglas, nails, wood support, metal screws, metal fasteners
11 $\frac{1}{4}$ × 12 $\frac{3}{4}$ × 1 in.
Sylvia Sleigh Collection (2011.4)

CATALOGUE OF THE SYLVIA SLEIGH COLLECTION
ROWAN UNIVERSITY ART GALLERY



Backstedt, Roseanne (1941–2008)
Earth Wedding, 1992
Acrylic on canvas
24 × 24 × 1 $\frac{3}{8}$ in.
Sylvia Sleigh Collection (2011.5)



Barnett, Emily (b. 1947)
Self-Portrait in the Studio, 1981
Oil on canvas
43 $\frac{7}{8}$ × 57 $\frac{7}{8}$ × 1 $\frac{1}{4}$ in.
Sylvia Sleigh Collection (2011.7)



Bastian, Linda (b. 1940)
Reflecting Pool with Irises, 1990
Watercolor on paper
41 × 29 in.
Sylvia Sleigh Collection (2011.6)

CATALOGUE OF THE SYLVIA SLEIGH COLLECTION
ROWAN UNIVERSITY ART GALLERY



Bernstein, Judith (b. 1942)
Horizontal, 1973
Charcoal on paper
29⁵/₈ × 41¹/₂ in.
Sylvia Sleigh Collection (2011.48)



Bernstein, Judith (b. 1942)
Small Screw, 1974
Graphite and charcoal on graph paper
8⁷/₈ × 4³/₈ in.
Sylvia Sleigh Collection (2011.76)

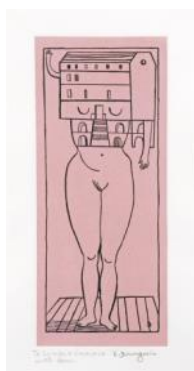


Bisbing, Elizabeth
Princess Dorothea (after Gossaert), 2009
Painted paper collage in painted and textured frame
5¹/₈ × 4³/₈ in. (collage); 16¹/₂ × 14⁵/₈ × 2 in. (frame)
Sylvia Sleigh Collection (2011.91)

CATALOGUE OF THE SYLVIA SLEIGH COLLECTION
ROWAN UNIVERSITY ART GALLERY



Bohnen, Blythe (b. 1940)
Motion Touching Five Points with Graphite Stick, 1975
Graphite on paper
28½ × 22½ in.
Sylvia Sleigh Collection (2011.8)



Bourgeois, Louise (1911–2010)
Femme Maison, 1984
Photogravure with chine collé, unique state
10¹/₁₆ × 4⁵/₁₆ in. (impression)
Sylvia Sleigh Collection (2011.10)



Bourgeois, Louise (1911–2010)
Inner Life, 1985
Lithograph on Arches paper, edition 3/100
12³/₈ × 8¹/₈ in. (impression)
Sylvia Sleigh Collection (2011.51)

CATALOGUE OF THE SYLVIA SLEIGH COLLECTION
ROWAN UNIVERSITY ART GALLERY



Burko, Diane (b. 1945)
#3, 1983
Color lithograph, edition 17/50
17¾ × 23½ in. (impression)
Sylvia Sleigh Collection (2011.9)



Chernow, Ann (b. 1936)
I Get Along Without You Very Well, 1979
Lithograph on Arches paper, edition 58/75
27⅝ × 21½ in. (sheet)
Sylvia Sleigh Collection (2011.11)



Chernow, Ann (b. 1936)
Legacy, 1985
Lithograph on Somerset paper, unique trial proof
28½ × 37½ in. (sheet)
Sylvia Sleigh Collection (2011.49)

CATALOGUE OF THE SYLVIA SLEIGH COLLECTION
ROWAN UNIVERSITY ART GALLERY



Coleman, Barbara (b. 1937)
Diagonal, 1973
Watercolor on Arches paper
22 × 37¾ in.
Sylvia Sleigh Collection (2011.12)

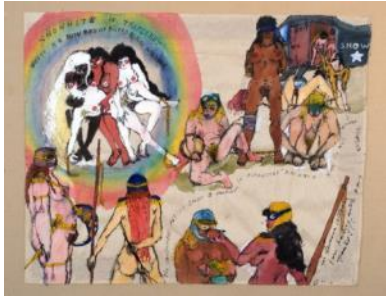


Coleman, Barbara (b. 1937)
Studies in Concrete White #9, 1974
Pencil and acrylic mixed with gel and gravel on canvas
72 × 12 × 2 in.
Sylvia Sleigh Collection (2011.50)



Drexler, Rosalyn (b. 1926)
Emilio Meets the Enchantress, 1968
Offset lithograph on paper
10⅞ × 10⅞ in. (impression)
Sylvia Sleigh Collection (2011.13)

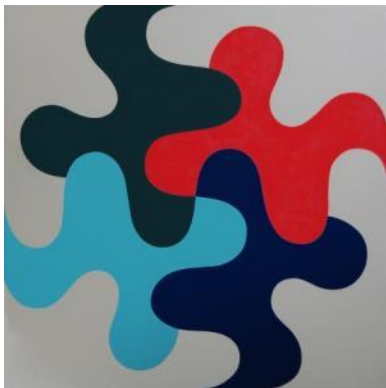
CATALOGUE OF THE SYLVIA SLEIGH COLLECTION
ROWAN UNIVERSITY ART GALLERY



Edelheit, Martha (b. 1931)
Sno White in Tripliket, 1966
Watercolor on rag paper
9 $\frac{1}{8}$ × 11 $\frac{5}{8}$ in.
Sylvia Sleigh Collection (2011.14)



Flack, Audrey (b. 1931)
Demonstrators, c. 1967–68
Graphite and gouache on paper
7 × 9 in.
Sylvia Sleigh Collection (2011.15)



Fredenthal, Ruth Ann (b. 1938)
Untitled, 1971
Alkyd high-gloss enamel on cloth Mylar
17 × 17 in.
Sylvia Sleigh Collection (2011.90)

CATALOGUE OF THE SYLVIA SLEIGH COLLECTION
ROWAN UNIVERSITY ART GALLERY



Glueckman, Joan (1940–1978)

Erect Penis #1, c. 1973–74

Persian wool needlepoint on mono-canvas over wood stretcher, edged with ribbon
7¹/₈ × 7⁷/₈ in.

Sylvia Sleigh Collection (2011.78)



Gorelick, Shirley (1924–2000)

Beth, 1976

Silverpoint on paper, mounted on Masonite
24 × 20 in.

Sylvia Sleigh Collection (2011.99)



Gorelick, Shirley (1924–2000)

Frida Kahlo, c. 1978

Photo transfer affixed to fiberboard, glued to wood support with black plastic edging; edition 6/25
19⁹/₁₆ × 10⁵/₈ × 1¹¹/₁₆ in.

Sylvia Sleigh Collection (2011.16)

CATALOGUE OF THE SYLVIA SLEIGH COLLECTION
ROWAN UNIVERSITY ART GALLERY



Grossman, Nancy (b. 1940)
A Garden for Sylvia, 1966
Graphite on paper
13 $\frac{7}{8}$ × 21 $\frac{7}{8}$ in.
Sylvia Sleigh Collection (2011.94)



Guggenheim, Pegeen (1925–1967)
Nativity, 1956
Acrylic on paper
19 $\frac{7}{8}$ × 25 $\frac{3}{4}$ in.
Sylvia Sleigh Collection (2011.17)



Henry, Jane (b. 1953)
Flash in the Pan, 1997
Papier-mâché, pigment, wire, chinchilla
13 × 8 × 5 in.
Sylvia Sleigh Collection (2011.18)

CATALOGUE OF THE SYLVIA SLEIGH COLLECTION
ROWAN UNIVERSITY ART GALLERY



Holt, Nancy (1938–2014)

Untitled, 1972

Black-and-white photographs and paper, mounted on foam-core board

35³/₈ × 7¹/₂ in.

Sylvia Sleigh Collection (2011.92)



Janto, Phyllis (b. 1932)

Eagle Eye Two, 1992

Carved pine, pigment, calcite

9³/₄ × 5 × 5 in.

Sylvia Sleigh Collection (2011.77)



Kaprov, Susan (b. 1946)

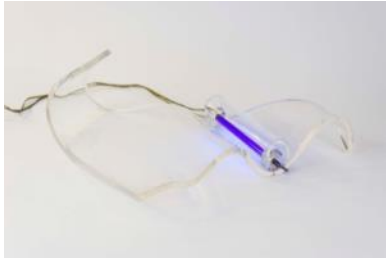
Untitled, 1974

Photocopy on paper, mounted on cardboard under acetate

8 × 11⁷/₈ × 1¹/₈ in.

Sylvia Sleigh Collection (2011.89)

CATALOGUE OF THE SYLVIA SLEIGH COLLECTION
ROWAN UNIVERSITY ART GALLERY



Katzen, Lila (1925–1998)
Untitled, c. 1971
Plexiglas, black light, electrical cord, wires, transformer
6⁵/₈ × 17³/₄ × 19 in.
Sylvia Sleigh Collection (2011.80A–B)



Krugman, Irene (1925–1982)
Untitled (reciprocal scale sculpture), c. 1977
Wood, canvas
Chair 4 × 2 × 2 in., table 3 × 6 × 3 in., ladder 11 × 3³/₄ × 3⁵/₈ in., canvas 3 × 6 × ³/₈ in.
Sylvia Sleigh Collection (2011.19A–D)



Kurz, Diana (b. 1936)
Woman in Doorway, 1974
Watercolor on paper
14³/₄ × 10³/₈ in.
Sylvia Sleigh Collection (2011.52)

CATALOGUE OF THE SYLVIA SLEIGH COLLECTION
ROWAN UNIVERSITY ART GALLERY



Kurz, Diana (b. 1936)
Couple on Patchwork Quilt, 1978
Oil on linen
55 $\frac{7}{8}$ × 48 in.
Sylvia Sleigh Collection (2011.20)



Kurz, Diana (b. 1936)
Portrait of Sylvia Sleigh, 1996–99
Oil on canvas
72 × 36 in.
Sylvia Sleigh Collection (2011.53)



Lenček, Bibi (b. 1947)
Insights, 1983
Oil pastel on olive-green paper
20 $\frac{1}{4}$ × 64 $\frac{1}{4}$ in.
Sylvia Sleigh Collection (2011.54)

CATALOGUE OF THE SYLVIA SLEIGH COLLECTION
ROWAN UNIVERSITY ART GALLERY



Lenček, Bibi (b. 1947)
Paradise Island, 2002
Reduction print, edition 1/10
8 × 4 in. (impression)
Sylvia Sleigh Collection (2011.55)



Lerner-Levine, Marion (b. 1931)
Long May They Reign, 1975
Watercolor and graphite on beige paper
14⁵/₈ × 19¹/₂ in.
Sylvia Sleigh Collection (2011.21)



Lerner-Levine, Marion (b. 1931)
Memory of the Coronation, 1937, 1978
Watercolor and graphite on paper
4¹/₈ × 6¹/₈ in.
Sylvia Sleigh Collection (2011.56)

CATALOGUE OF THE SYLVIA SLEIGH COLLECTION
ROWAN UNIVERSITY ART GALLERY



Livingston, Jacqueline (1943–2013)
Photographposter Mail Exhibition, 1979
Fourteen photograph posters on paper
Each 24 × 18 in.
Sylvia Sleigh Collection (2011.57A–P)



Mackie, Jill (b. 1941)
Red Hibiscus, 1989
Oil and graphite on paper
7⁷/₈ × 11¹/₈ in.
Sylvia Sleigh Collection (2011.23)



Mailman, Cynthia (b. 1942)
Study for "God" #1 (First God Study), 1976
Graphite and acrylic on beige paper
11 × 6⁷/₈ in.
Sylvia Sleigh Collection (2011.24)

CATALOGUE OF THE SYLVIA SLEIGH COLLECTION
ROWAN UNIVERSITY ART GALLERY



Mayer, Rosemary (1943–2014)

Cabbage, 1974

Watercolor, graphite, and red ink on paper, glued to paper
11 × 14⁷/₈ in.

Sylvia Sleigh Collection (2011.58)

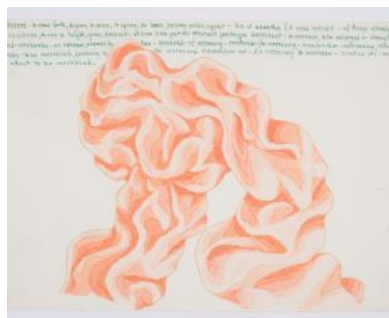


Mayer, Rosemary (1943–2014)

Orchid, 1974

Watercolor and graphite on paper, glued to paper
11 × 13³/₄ in.

Sylvia Sleigh Collection (2011.59)



Mayer, Rosemary (1943–2014)

Untitled (*Crescere*), 1974

Watercolor, graphite, and green ink on beige paper
11 × 15 in.

Sylvia Sleigh Collection (2011.102)

CATALOGUE OF THE SYLVIA SLEIGH COLLECTION
ROWAN UNIVERSITY ART GALLERY



Mayer, Rosemary (1943–2014)

For 1978: Study for a book at Christmas for Sylvia & Lawrence, 1977

Graphite and watercolor on paper, plastic mesh, fabric mesh, ribbons, felt
4 $\frac{1}{8}$ × 35 $\frac{1}{2}$ in. (unfolded)

Sylvia Sleigh Collection (2011.103)



Mayer, Rosemary (1943–2014)

Li-he, 1986

Rag vellum paper with rabbit skin glue over reeds
14 × 11 × 8 $\frac{3}{4}$ in.

Sylvia Sleigh Collection (2011.25)



Mayer, Rosemary (1943–2014)

First Green, 1988

Rag vellum paper with watercolor and rabbit skin glue over reeds
Approx. 19 $\frac{1}{2}$ × 31 × 31 in.

Sylvia Sleigh Collection (2011.60)

CATALOGUE OF THE SYLVIA SLEIGH COLLECTION
ROWAN UNIVERSITY ART GALLERY



Mayer, Rosemary (1943–2014)

Niche Sculpture, 1992

Wire mesh, plaster, fabric, rabbit skin glue, metallic powder, twigs

30¼ × 12 × 9¼ in.

Sylvia Sleigh Collection (2011.61)



Miller, Katherine Amy (1892–1971)

Landscape, c. 1932

Oil on wood panel

8 ⅛ × 10 ⅝ in.

Sylvia Sleigh Collection (2011.26)



Moore, Sabra (b. 1943)

Door, 1986

Wood panels, desert wood, fabric, beads, string, oil paint

63¾ × 37½ × 6½ in.

Sylvia Sleigh Collection (2011.27)

CATALOGUE OF THE SYLVIA SLEIGH COLLECTION
ROWAN UNIVERSITY ART GALLERY



Nemec, Vernita (b. 1942)
Self-Portrait, 2005
Cast paper of checks from credit card companies
42 × 14 × 4 in.
Sylvia Sleigh Collection (2011.62)



Parsons, Betty (1900–1982)
Gate, 1967
Driftwood, acrylic, wood, nails, glue, staples, nylon, metal
15½ × 11 × 1½ in.
Sylvia Sleigh Collection (2011.28)



Pinto, Marion (1935–2010)
Homage to Lautrec, 1997
Color laser copy
13½ × 9½ in.
Sylvia Sleigh Collection (2011.29)

CATALOGUE OF THE SYLVIA SLEIGH COLLECTION
ROWAN UNIVERSITY ART GALLERY



Pinto, Marion (1935–2010)
Homage to Matabei, 1997
Color laser copy
17 × 11 in.
Sylvia Sleigh Collection (2011.63)



Rainnie, Felicity (b. 1945)
Flowerbowl, n.d.
Etching on paper, artist's proof
7½ × 5⅝ in.
Sylvia Sleigh Collection (2011.96)



Rainnie, Felicity (b. 1945)
Tiny Bird, n.d.
Etching on paper, artist's proof
7½ × 5⅝ in.
Sylvia Sleigh Collection (2011.97)

CATALOGUE OF THE SYLVIA SLEIGH COLLECTION
ROWAN UNIVERSITY ART GALLERY



Rainnie, Felicity (b. 1945)

Eve, n.d.

Etching on paper, artist's proof

6¼ × 5⅝ in.

Sylvia Sleigh Collection (2011.98)



Rauschenbusch, Stephanie (b. 1942)

Homage to Balthus, 1981

Oil on canvas

30 × 24¼ in.

Sylvia Sleigh Collection (2011.30)



Rauschenbusch, Stephanie (b. 1942)

Still Life with Underwater Monster Mask, 1983

Oil on canvas

14 × 18 in.

Sylvia Sleigh Collection (2011.65)

CATALOGUE OF THE SYLVIA SLEIGH COLLECTION
ROWAN UNIVERSITY ART GALLERY



Rauschenbusch, Stephanie (b. 1942)
Lobster and Afghan, 1988
Watercolor on paper
Approx. 18 × 24 in.
Sylvia Sleigh Collection (2011.64)



Rauschenbusch, Stephanie (b. 1942)
Sketchbook, 1994–95
Watercolor on paper, twenty-four pages
11⁵/₈ × 15³/₄ in.
Sylvia Sleigh Collection (2011.81)



Roser, Ce (b. 1930)
Double Vision, 1991
Oil on two canvases
29⁷/₈ × 55³/₄ in.
Sylvia Sleigh Collection (2011.31)

CATALOGUE OF THE SYLVIA SLEIGH COLLECTION
ROWAN UNIVERSITY ART GALLERY



Rosser, Phyllis (b. 1934)
Before Night Falls, 1991
Acrylic on driftwood
48 × 89 × 10 in.
Sylvia Sleigh Collection (2011.32A-B)



Sallick, Lucy (b. 1937)
Photographs of Summer 1974, 1975
Oil on canvas
21 $\frac{7}{8}$ × 29 in.
Sylvia Sleigh Collection (2011.33)

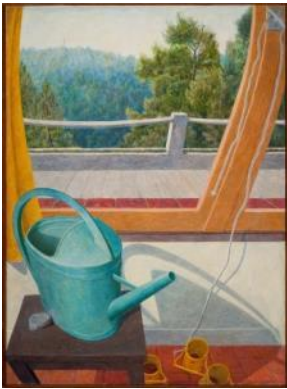


Sallick, Lucy (b. 1937)
Pencils, Pencils, 1978
Lithograph on paper, trial proof
3 $\frac{7}{8}$ × 4 $\frac{7}{8}$ in. (impression)
Sylvia Sleigh Collection (2011.95)

CATALOGUE OF THE SYLVIA SLEIGH COLLECTION
ROWAN UNIVERSITY ART GALLERY



Sanders, Rhea (b. 1923)
Still Life with Shopping List, 1987
Egg tempera on gessoed wood
24 $\frac{7}{8}$ × 25 in.
Sylvia Sleigh Collection (2011.66)



Sanders, Rhea (b. 1923)
Inside-Outside, Karolyi Stone House, Vence, 1989
Egg tempera on wood
29 $\frac{1}{2}$ × 21 $\frac{1}{2}$ in.
Sylvia Sleigh Collection (2011.34)



Sanders, Rhea (b. 1923)
Statue of Fitz-Greene Halleck, Central Park, n.d.
Watercolor on white paper
14 $\frac{1}{2}$ × 11 in.
Sylvia Sleigh Collection (2011.100)

CATALOGUE OF THE SYLVIA SLEIGH COLLECTION
ROWAN UNIVERSITY ART GALLERY



Sanders, Rhea (b. 1923)
I, n.d.
Acrylic and oil glaze on paper
4 × 6 in.
Sylvia Sleigh Collection (2011.85)



Schwartzberg, Lisa (b. 1948)
Dreamscape #2, 1995
Wood box, plastic bow and arrow, dried plant, painted wood, metal Buddhist figurine, feather
6 × 4 × 2 in.
Sylvia Sleigh Collection (2011.79)



Shaffer, Rosalind (b. 1949)
Urban Woman (maquette), 1982
Conté crayon on paper, mounted on wood under glass
11³/₄ × 17⁷/₈ × 2³/₄ in.
Sylvia Sleigh Collection (2011.35)

CATALOGUE OF THE SYLVIA SLEIGH COLLECTION
ROWAN UNIVERSITY ART GALLERY



Sills, Susan (b. 1941)
Manet's Mazurka, 1994
Oil on birch
50½ × 25 × ½ in.
Sylvia Sleigh Collection (2011.36)



Sleigh, Sylvia (1916–2010)
Fred Tuten and Simona Morini, 1966
Oil on canvas
17 × 32 in.
Sylvia Sleigh Collection (2011.88)



Sleigh, Sylvia (1916–2010)
Study for Lilith: Susan Kaprov and Paul Rosano, 1975
Graphite on paper
115¾ × 62 in.
Sylvia Sleigh Collection (2011.104)

CATALOGUE OF THE SYLVIA SLEIGH COLLECTION
ROWAN UNIVERSITY ART GALLERY



Sleight, Sylvia (1916–2010)

Lilith, 1978

Acrylic on canvas

20 × 11 in.

Sylvia Sleight Collection (2011.86)



Sleight, Sylvia (1916–2010)

Portrait of an Actor: Sean Pratt, 1994

Oil on canvas

42½ × 55¾ in.

Sylvia Sleight Collection (2011.87)



Spikol, Eileen (1938–2011)

Enigma, 1991–92

Plaster over gauze and armature, plaster cast with pigment

Lower section 71 × 6 × 6¾ in., upper section 40½ × 23½ × 1¾ in.

Sylvia Sleight Collection (2011.37A–B)

CATALOGUE OF THE SYLVIA SLEIGH COLLECTION
ROWAN UNIVERSITY ART GALLERY



Spikol, Eileen (1938–2011)
Serpents, c. 1984
Wax over cardboard
13½ × 31 × 20¼ in.
Sylvia Sleigh Collection (2011.67)



Spikol, Eileen (1938–2011)
Untitled, 2007
Acrylic on canvas board
14 × 11 in.
Sylvia Sleigh Collection (2011.68)



Stuart, Michelle (b. 1933)
Tsikomo Suite, 1974–75
Three color lithographs on Arches paper, buff nacre paper, and Arjomari Arches paper, edition
11/24 with folio, colophon, and handwritten note
Part A 20¾ × 13½ in., part B 15¾ × 15⅛ in., part C 18 × 15 in., folio 21½ × 16¼ in.
Sylvia Sleigh Collection (2011.38A–F)

CATALOGUE OF THE SYLVIA SLEIGH COLLECTION
ROWAN UNIVERSITY ART GALLERY



Tavins, Paula (b. 1939)
Untitled, 1973
Canvas with acrylic and stitching
7 $\frac{1}{8}$ × 7 × $\frac{3}{4}$ in.
Sylvia Sleigh Collection (2011.69)



Tavins, Paula (b. 1939)
Untitled, 1975
Canvas with acrylic and stitching
15 $\frac{1}{4}$ × 11 $\frac{3}{4}$ × $\frac{3}{4}$ in.
Sylvia Sleigh Collection (2011.39)



Trieff, Selina (1934–2015)
Head, 1985
Oil and gold leaf on paper
Approx. 7 × 10 in.
Sylvia Sleigh Collection (2011.40)

CATALOGUE OF THE SYLVIA SLEIGH COLLECTION
ROWAN UNIVERSITY ART GALLERY



Ushenko, Audrey (b. 1945)
Perseus and Medusa II, 1982
Oil on canvas
36 × 24 $\frac{1}{8}$ in.
Sylvia Sleigh Collection (2011.41)



Wadsworth, Freda (1918–2003)
Sonata, 1990
Gouache on composition board
28 $\frac{1}{2}$ × 18 $\frac{5}{8}$ in.
Sylvia Sleigh Collection (2011.42)



Wadsworth, Freda (1918–2003)
Untitled, c. 1990
Gouache on composition board
32 × 17 in.
Sylvia Sleigh Collection (2011.70)

CATALOGUE OF THE SYLVIA SLEIGH COLLECTION
ROWAN UNIVERSITY ART GALLERY



Wadsworth, Freda (1918–2003)
The Hollow Road, c. 1990–95
Gouache on composition board
20½ × 21 in.
Sylvia Sleigh Collection (2011.71)



Wadsworth, Freda (1918–2003)
Suspense (The Exact Time before the Gulf War Started), January 1991
Gouache on composition board
31½ × 21 in.
Sylvia Sleigh Collection (2011.72)



Wadsworth, Marjorie (1911–2001)
Conservatory Interior, Syon, 1990
Gouache on composition board
21⅝ × 19 in.
Sylvia Sleigh Collection (2011.43)

CATALOGUE OF THE SYLVIA SLEIGH COLLECTION
ROWAN UNIVERSITY ART GALLERY



Wadsworth, Marjorie (1911–2001)
The Three Urns, Syon Park, 1995
Gouache on composition board
25 × 22 in.
Sylvia Sleigh Collection (2011.73)



Wadsworth, Marjorie (1911–2001)
Victorian Fantasy, Kensington Gardens, 1995
Gouache on composition board
23³/₈ × 16¹/₂ in.
Sylvia Sleigh Collection (2011.74)



Warsh, Marie (b. 1975)
Sylvia in the Mirror, 1997
Gelatin silver print
11 × 13³/₄ in.
Sylvia Sleigh Collection (2011.44A–B)

CATALOGUE OF THE SYLVIA SLEIGH COLLECTION
ROWAN UNIVERSITY ART GALLERY



Warsh, Marie (b. 1975)
Sylvia Sleigh, 1997
Gelatin silver print
6¼ × 9¼ in.
Sylvia Sleigh Collection (2011.82)



Warsh, Marie (b. 1975)
Sylvia Sleigh, 1997
Gelatin silver print
9½ × 6¼ in.
Sylvia Sleigh Collection (2011.83)



Warsh, Marie (b. 1975)
Sylvia Sleigh, 1997
Gelatin silver print
10⅞ × 13⅞ in.
Sylvia Sleigh Collection (2011.84)

CATALOGUE OF THE SYLVIA SLEIGH COLLECTION
ROWAN UNIVERSITY ART GALLERY



Weinberg, Louise (b. 1954)
Heart's Lake, 1997
Ink and beeswax on copper and wood
16³/₈ × 14³/₈ × 1 in.
Sylvia Sleigh Collection (2011.45)



Winter, Harriet (1927–2010), known as Mrs. H. Winter
Untitled (*Portrait of Sylvia Sleigh*), n.d.
Needlepoint on fabric canvas, stitched to Plexiglas, mounted on small wood stretcher
19³/₈ × 14³/₄ × 1¹/₄ in.
Sylvia Sleigh Collection (2011.101)



Wray, Jacqueline (b. 1933)
Blue Ridge Spring #1, 1993
Oil stick on paper
26 × 40 in.
Sylvia Sleigh Collection (2011.46)

CATALOGUE OF THE SYLVIA SLEIGH COLLECTION
ROWAN UNIVERSITY ART GALLERY



Wybrants, Sharon (b. 1943)
Artist in the Nursery, 1971
Graphite, iridescent marker, acrylic, and pastel on paper
14 × 17 in.
Sylvia Sleigh Collection (2011.22)



Wybrants, Sharon (b. 1943)
Barbara Coleman, 1975
Charcoal on paper
18 × 15 in.
Sylvia Sleigh Collection (2011.75)

The Sylvia Sleigh Collection consists of paintings, sculptures, prints, drawings, and photographs by women. The collection was amassed by its namesake, the feminist painter Sylvia Sleigh (1916–2010). She and her husband, the critic and curator Lawrence Alloway (1926–1990), received some of the works as gifts. During the last two decades of her life, Sleigh accumulated a substantial portion of the collection through purchases, exchanges, and additional gifts. She bequeathed the works to Rowan University Art Gallery.

Catalogue compiled by Andrew D. Hottle, Professor of Art History, Rowan University

October 2019