

2020 PARK MODELS

# CAVCO



# 150



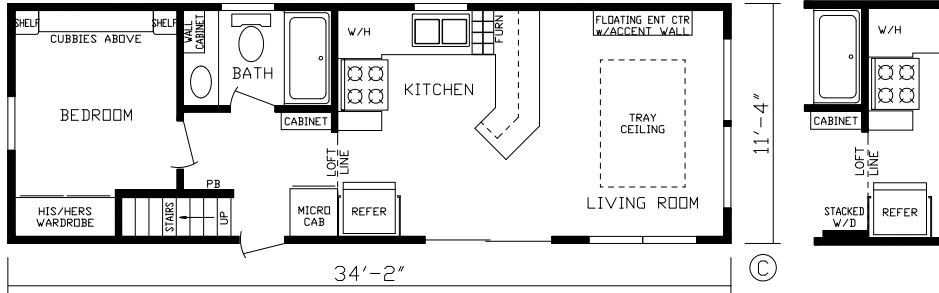
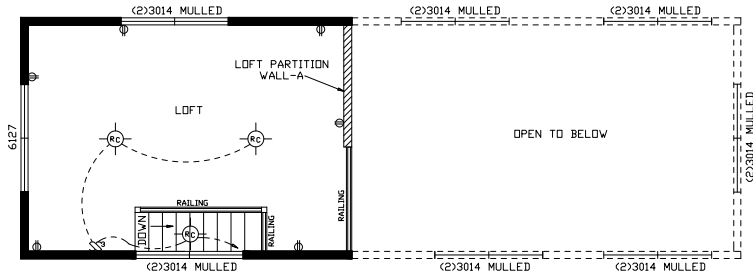
190006 SHOWN



## JUST PARK IT

"Build Your Own Unit" at [fairmontparkmodels.com](http://fairmontparkmodels.com)

# Model # 190000 Loft



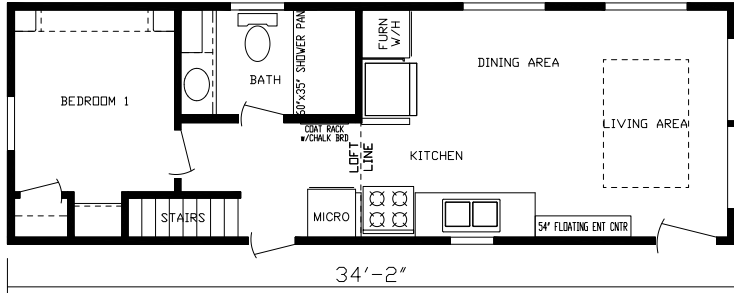
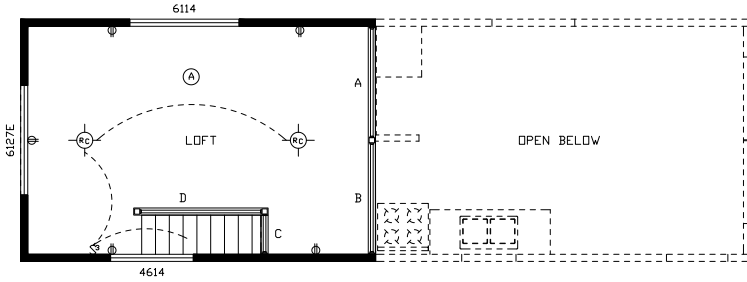
**PRO-238  
Optional  
Stacked  
Washer/  
Dryer**

Model # 190000 — lofted version of 190005

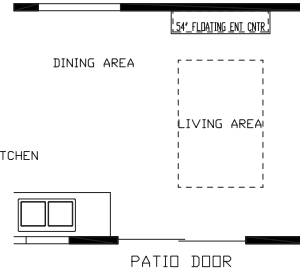
190000



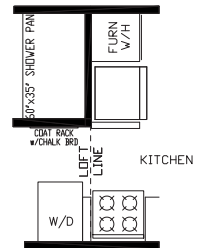
**Model # 190001 Loft**



**Model # 190001**



**PRO-245 Optional Living Room**



**PRO-249 Optional Washer/Dryer**



**STANDARD FRONT END  
ON 190000, 190001,  
190005, 190006**



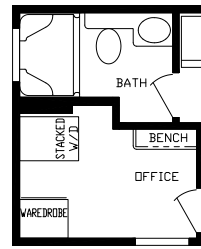
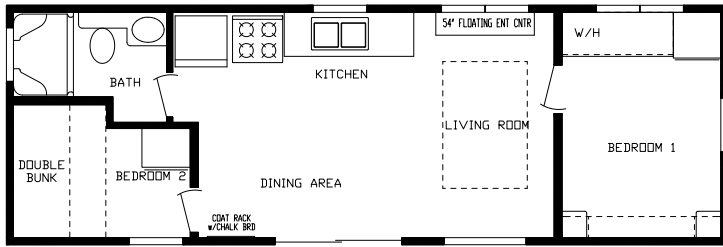
**OPTIONAL  
FRONT END  
ON 190000, 190001,  
190002, 190005,  
190006**



**190001**



**Model # 190002**



**PRO-242**  
**Optional Stacked**  
**Washer / Dryer**

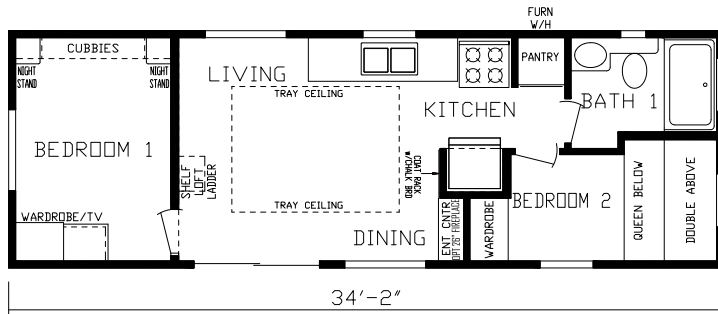
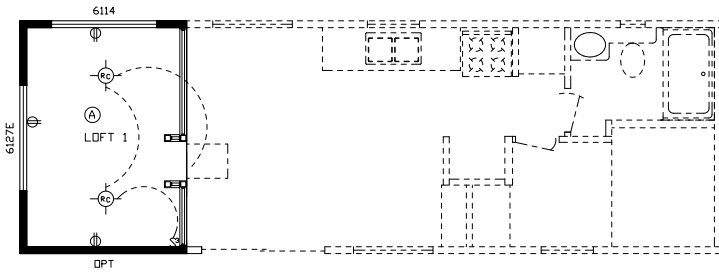


**PEW-222**  
**STANDARD**  
**FRONT END**  
**FOR 190002**

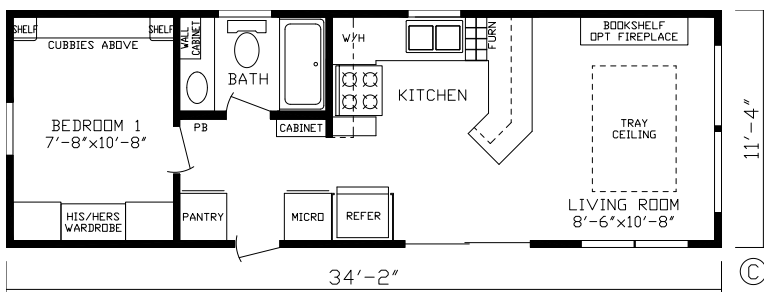


**190002**

## Model # 190004 Loft



## Model # 190004



## Model # 190005 — non-lofted version of 190000



190004

# Choose from Our Hardwood Shaker Cabinetry — Standard in ALL Fairmont Park Models



**Rustic Shore Maple**



**Cottage Slate**



**Vintage**



**Stone Henge**





**Sandstone**

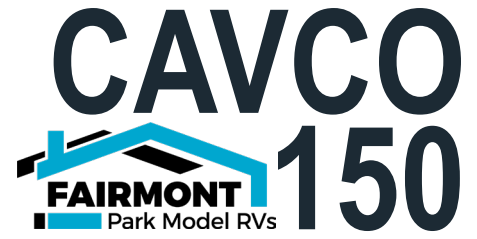


**Pacific**

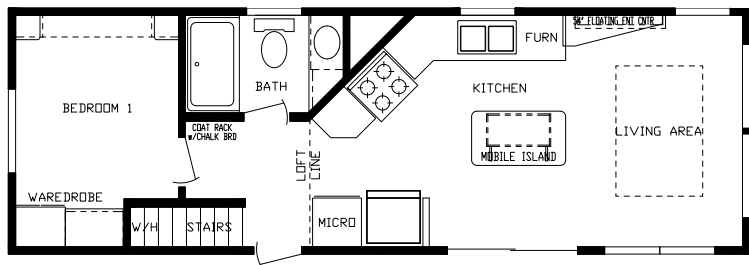
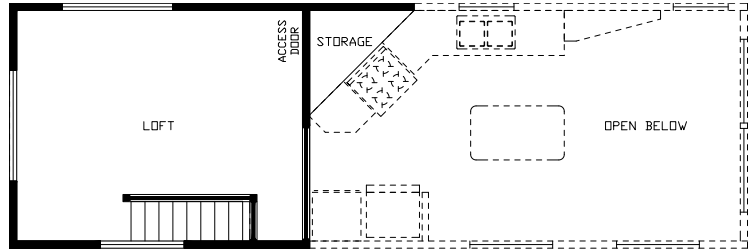


**Pewter**

# Choose from Our NEW Valance Fabrics — Standard in Cavco 150 Park Models



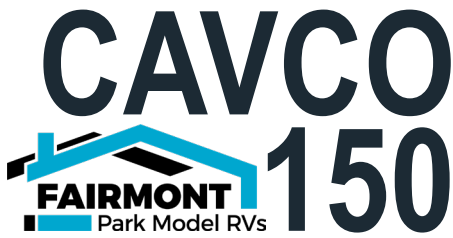
**Model # 190006 Loft**



**Model # 190006**

190006





## EXTERIOR

- Royal Dutch Lap Vinyl Siding
- Exterior Wainscot (3/4 Color & 1/4 Different Color)
- 7/16" OSB Exterior Wrap
- 7/16" Roof Decking
- Owens Corning® 25 Year Shingles
- Ice Dam Shield Underlayment – Full Coverage
- 9' Elevation w/Transom Windows – Non Loft Units
- 9'-8" Elevation w/Transom Windows – Loft Units
- Low E Vinyl Thermopane Gridded Windows
- Exterior GFI Receptacle
- Home Guard® Exterior Weather House Wrap
- 2" x 4" Exterior Sidewalls 16" O.C.
- 2" x 6" Transverse Floor Joist 16" O.C.
- Steel Strapping from Truss & Floor to Sidewall
- 8" Steel I-Beam Construction
- Vinyl Sliding Glass Door – Per Plan
- 10 Lite Rear Door w/Deadbolt & Storm – Per Plan
- Detachable Hitch
- Woven Shepweave Underbelly
- Lineals – Doorside & Hitch End (White)
- 190001 Residential Front Door w/Storm

## INTERIOR

- LED Lights T/O Interior
- Recessed Lighting in all Rooms
- Floating Entertainment Center LR– Per Plan w/ TV Jack
- Lighted Ceiling Fan Living Room & Master Bedroom – Non Loft Models
- Lighted Ceiling Fan Living Room – Loft Models
- ½" Drywall Décor Vinyl Covered Walls
- Fabric Window Valances (Sandstone Brown, Pacific Blue or Pewter Grey) & 2" Faux Blinds
- Coat Rack w/Board Accent Wall
- Convenient Chalk Board over Coat Rack
- Residential Crown Molding & Door Trim
- Raised 6 Panel Interior Passage Doors
- ½" Residential Tape & Textured Drywall Flat Ceiling
- Smoke & LP Detector & Fire Extinguisher
- Ceiling Tray w/Accent VOG
- Pet Center – Per Plan
- USB Port each Bedroom
- Transom Windows LR, Loft & Bedroom – Per Plan
- 5/8" T & G OSB Floor Decking – Glued & Screwed
- Congoleum® Linoleum T/O Main Level
- Shaw® Mantra Carpet Loft & Stairway – Per Plan

## BATHROOM

- Fiberglass Tub or Shower – Per Plan w/Curtain
- Residential Style Ceramic Commode
- Residential Ceramic Sink w/Single Lever Faucet
- Tissue Holder & Towel Bar
- Exhaust Fan
- GFI Protected Receptacle
- Window– Per Plan
- Bella Core Shower Model 190001



## BEDROOM

- His & Her Reading Lights with Individual Switches
- Bedside Nightstands w/Receptacle, USB Port & Overhead Cubby Cabinets
- Entertainment Center w/Storage Drawers – Per Plan
- Egress Window
- Bunk Mattresses

## KITCHEN / DINING AREA

- Concealed Cabinet Hinges
- 40" Overhead Cabinets – Hardwood
- Black Appliances
- Frost Free Refrigerator – Whirlpool
- 30" Gas Range – Whirlpool
- High Arch Kitchen Faucet w/Pull out Sprayer
- Dual Bowl Stainless Steel Kitchen Sink
- Microwave – Per Plan
- GFI Protected Receptacle
- Curved 30" Euro Style Range Hood
- Laminate Countertops & Backsplash
- Adjustable Overhead Shelving
- Tip Out Trays at Kitchen Sink

## ADDITIONAL STANDARD FEATURES

- 40,000 BTU Ducted Furnace w/Auto Ignition
- Toe Kick Floor Registers in Wet Areas
- R-19 Roof / R-13 Exterior Walls & R-11 Floors
- 50 AMP with 25' Supply Cord
- Interior Panel Box Location
- 20 Gallon Electric Water Heater w/Exterior Access Door
- RVIA Seal
- Fabricated Aluminum Heat Ducts
- TV Jack at Living Room Entertainment Center

## POPULAR OPTIONS

- Air Conditioning-13.5K BTU
- Wall Mount Loft A/C
- Stainless Steel Appliances
- Washer/Dryer – Per Plan
- 16 Gallon Gas/Electric DSI Water Heater
- Queen Slide a Bed Sleeper Sofa
- Recliner
- Dinette Table w/4 Chairs
- Movable Island and 4 Chairs or Stools
- Patio Door Vertical Blinds
- Solid Surface Countertops
- 100 Amp Service
- 4 Bar Height Chairs or Stools
- Queen Bed (Metal Frame, Box Spring & Queen Mattress)
- Pillow Top Mattress
- Bedspread, Pillows & Shams (Match Decor)
- Bunk Spreads (Match Decor)
- Coffee Table w/Lift Up Storage
- End Tables
- Lift Frame Bed w/Storage Box
- Glass Tub/Shower Doors
- Shower IPO Tub
- Metal Roof
- Metal Underbelly
- Lighted Medicine Cabinet over Bath Lav
- Black Hardware
- 1-Color Exterior Siding – No Wainscot
- White Vinyl Exterior Corner Posts
- Awning Rail (Omit Lineals)



WHAT'S IN YOUR PARK MODEL?