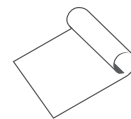
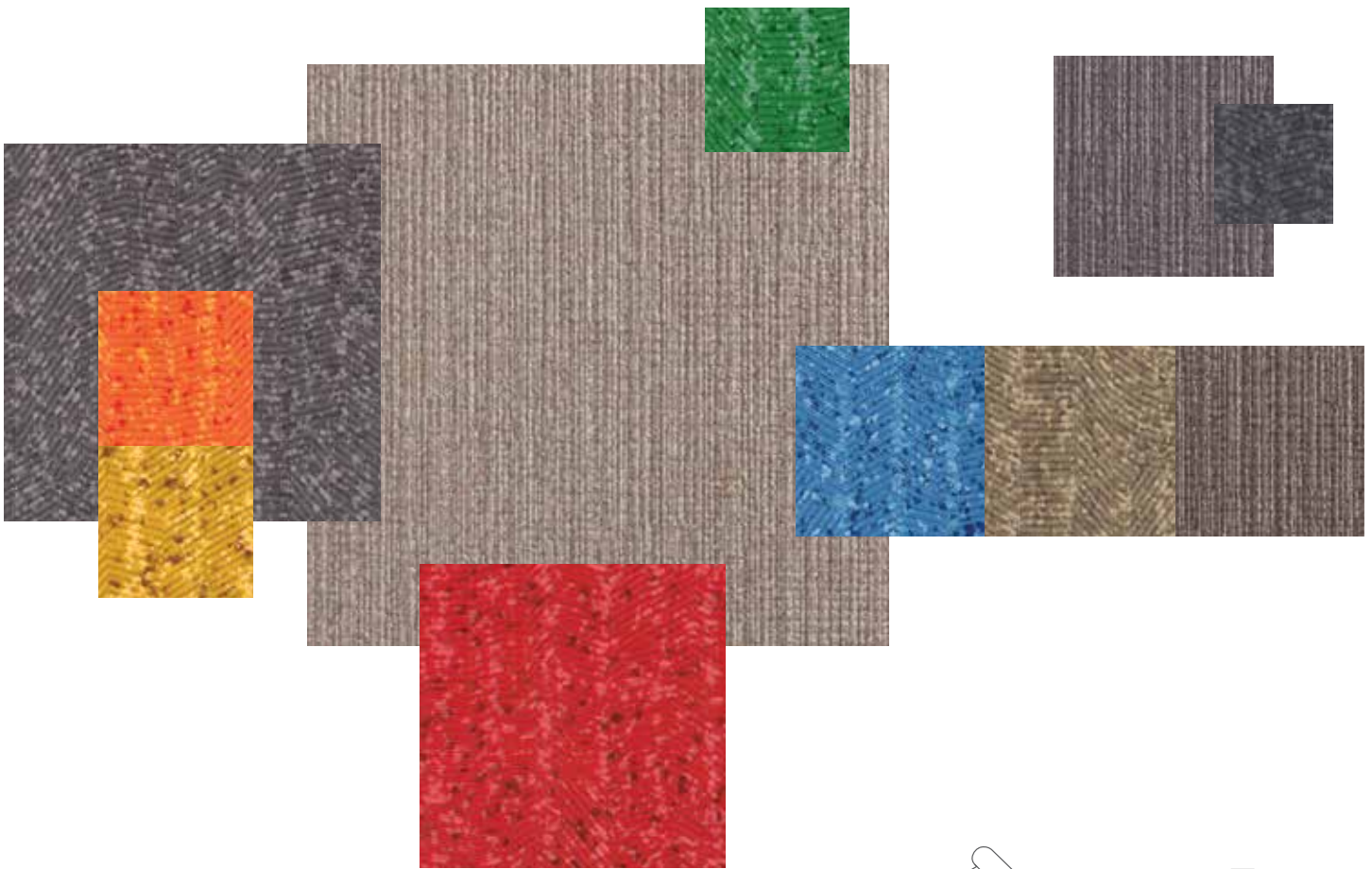


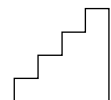
Exclusively from  
CBC® Flooring

# Step Easy Collection

PATHWAYS / NATTICE™ / STAIR TREADS



COMMERCIAL  
SHEET FLOORING



COMMERCIAL  
STAIR TREADS

# Pathways



## **In, out and in between.**

Takiron Pathways is the slip-resistant flooring that is soft enough for bare feet, but tough enough for heavy rolling carts and pallet jacks. Its rich texture delivers the safety and looks to transform heavy traffic areas in healthcare, educational, retail and hospitality settings.

Pathways comes in five bright colors and five neutral tones that look as good in the front lobby as they do in the service corridor. Transform a utilitarian space or introduce an interesting and low-maintenance visual to public areas to improve safety without sacrificing beauty...

## Safety first. Beauty first.

The safe, slip-resistant surface that keeps you safer inside and out while standing up to heavy foot traffic. Takiron Pathways' rich texture delivers excellent traction, but is supple enough for bare feet. It looks cool inside and stands up to the heat and sunlight of exterior applications.



GET SAMPLES FAST 919-230-8700 [cbcflooring.com](http://cbcflooring.com)

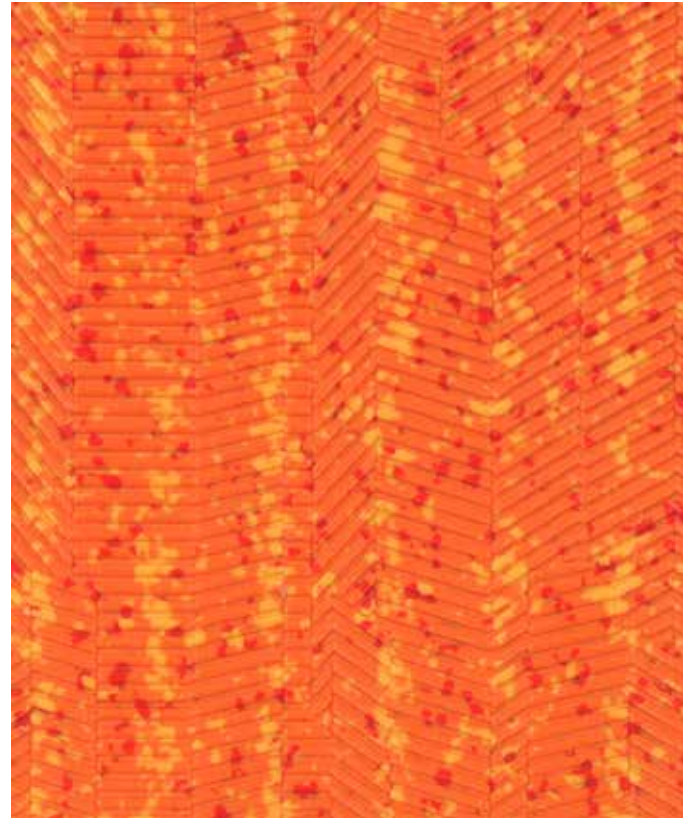
Questions? Give us a call, we're ready to help you create your next great space.

# PATHWAYS



11

Crimson



21

Sunset



31

Golden



41

Meadow

Pathways colors 92, 91 and 82 are available with coordinating interior/exterior stair treads.



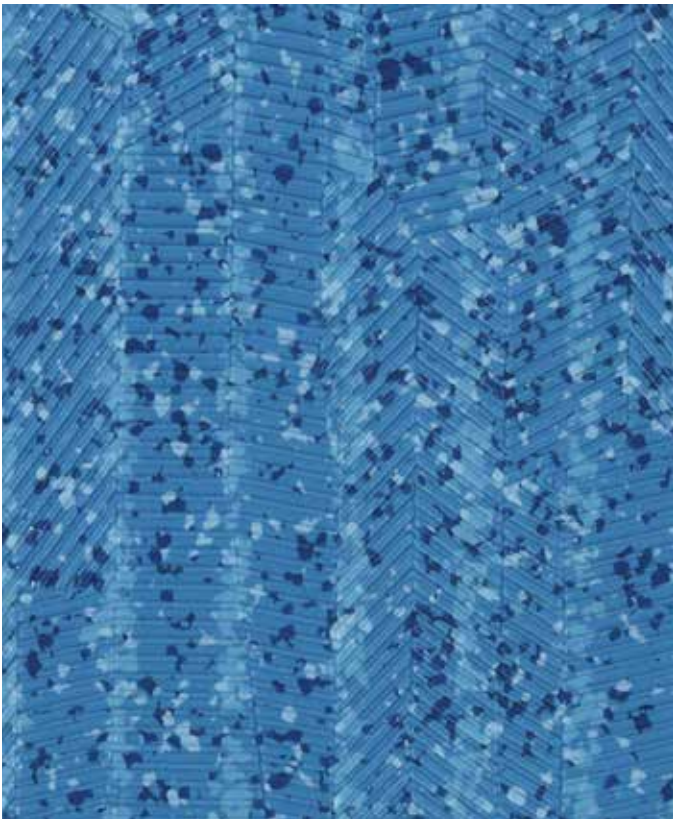
82

Taupe



91

Grey



51

Heavenly

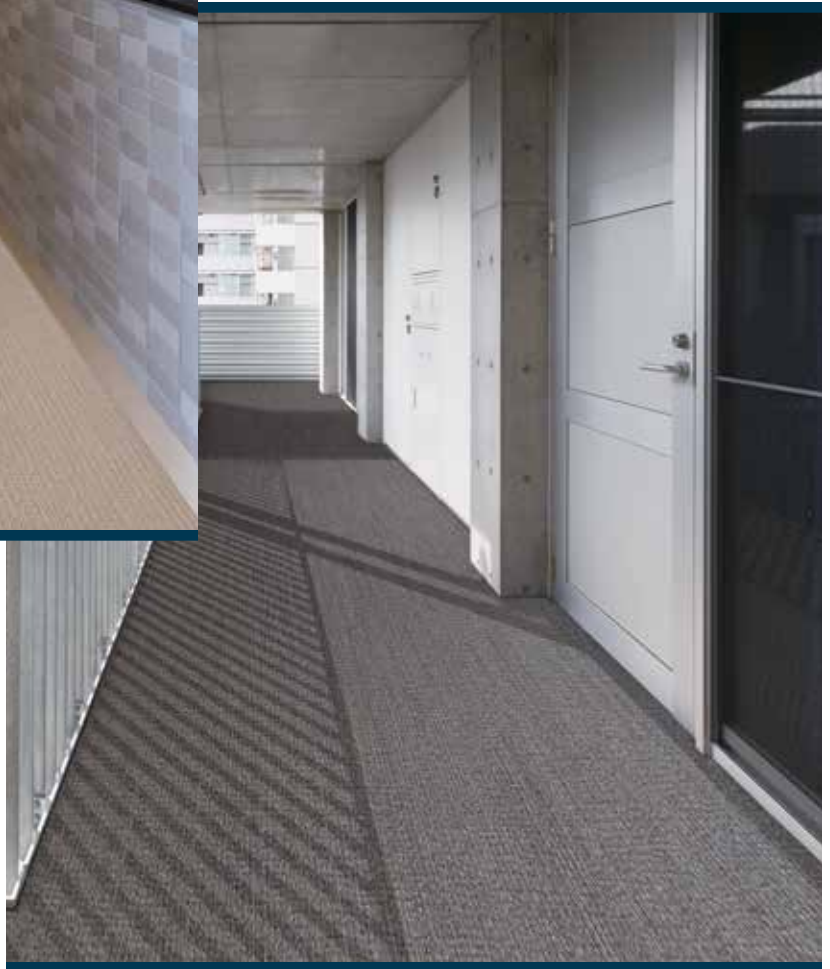


92

Charcoal

# Nattice

Whether installed interior or exterior, Nattice's subtle texture provides a softer visual with the same slip resistance and durability you have come to expect from Takiron. Nattice sheet pairs perfectly with its color-coordinating Stair Treads for a beautiful, functional and safe environment



# NATTICE



833

Autumn Fog



936

Chromed Cloud



837

Mudslide



937

Storm

# Stair Treads

## Stepping up and stepping out.

Takiron Treads are the tread and riser combination that provides slip-resistant protection to interior and exterior stairways. Designed to pair beautifully with Takiron's Pathways and Nattice interior/ exterior slip-resistant flooring, this tread is designed to withstand heavy foot traffic – and Mother Nature.

### Lasting Beauty

- Approved for interior or exterior installations
- Superior color retention and fade resistance
- Color coordinates with our Pathways and Nattice Sheet

### Product Features

- One piece tread and riser
- 6' and 4' lengths
- Tread depth 19.69"
- Available with yellow nosing to satisfy CA Title 24 and ADA Recommendations for the Visually Impaired (6' only)

### Easy Installation & Maintenance

- Can be installed with our double-faced installation tape
- Excellent cleanability
- Lower life cycle cost



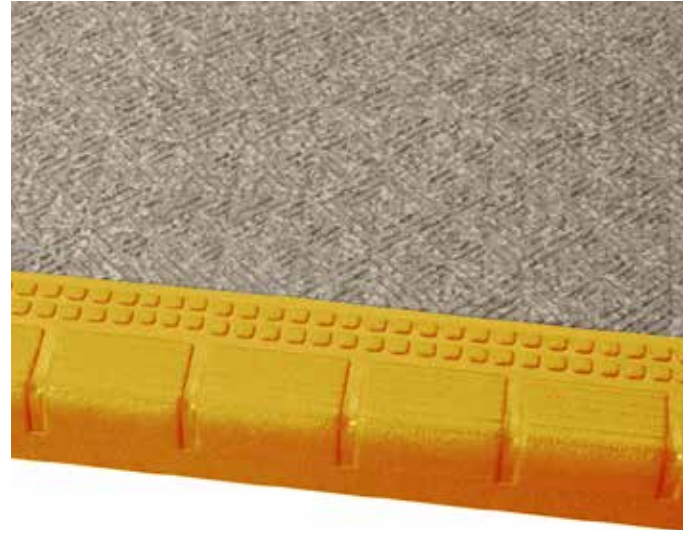


# STAIR TREADS (Pathways Coordinates)



82-5WP

Taupe



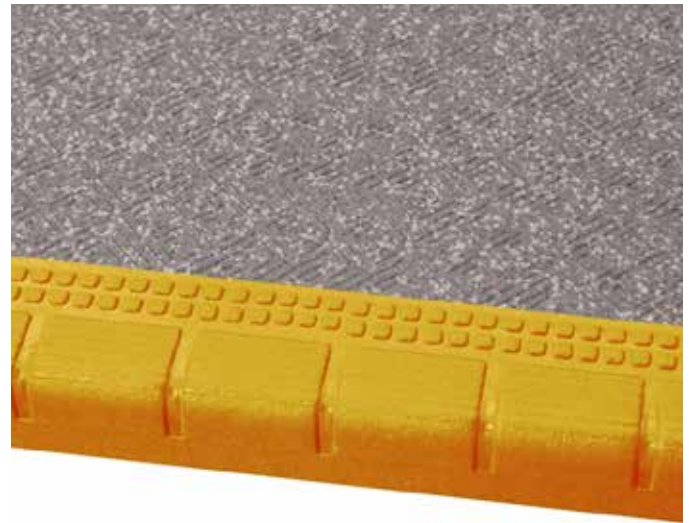
82-5YP

Taupe w/Yellow Nose



91-5WP

Grey



91-5YP

Grey w/Yellow Nose



92-5WP

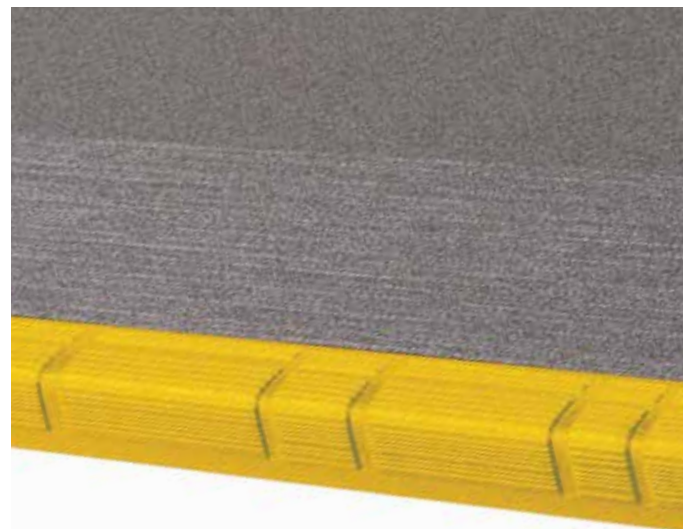
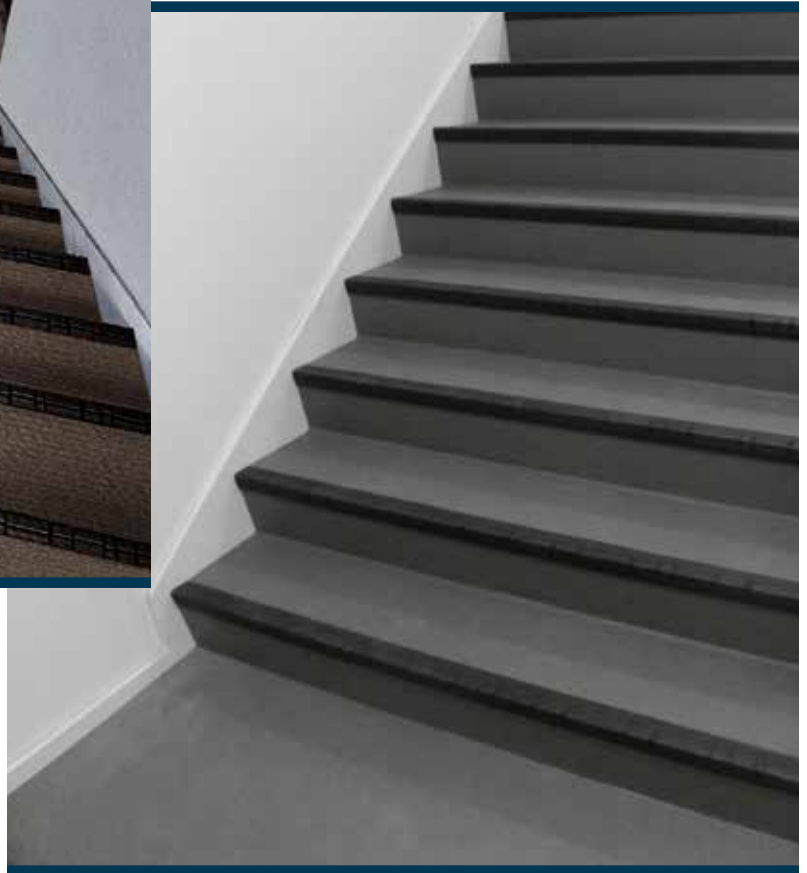
Charcoal



92-5YP

Charcoal w/Yellow Nose

# STAIR TREADS (Nattice Coordinates)



936-8WN

Chromed Cloud

936-8YN

Chromed Cloud w/Yellow Nose

# STAIR TREADS (Nattice Coordinates)



833-8WN

Autumn Fog



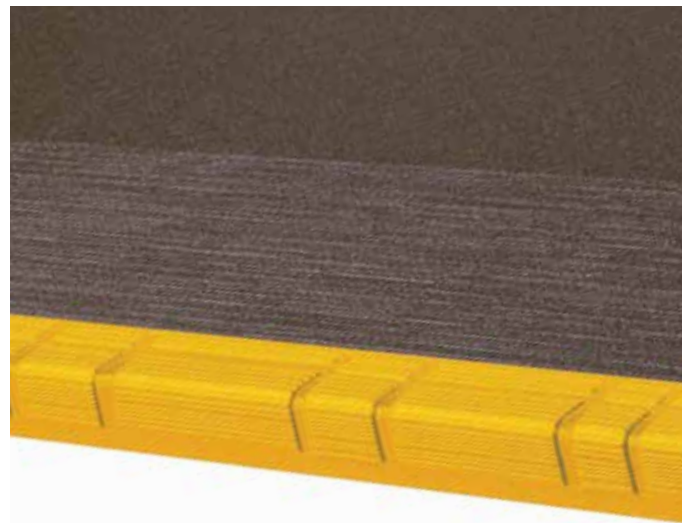
833-8YN

Autumn Fog w/Yellow Nose



837-8WN

Mudslide



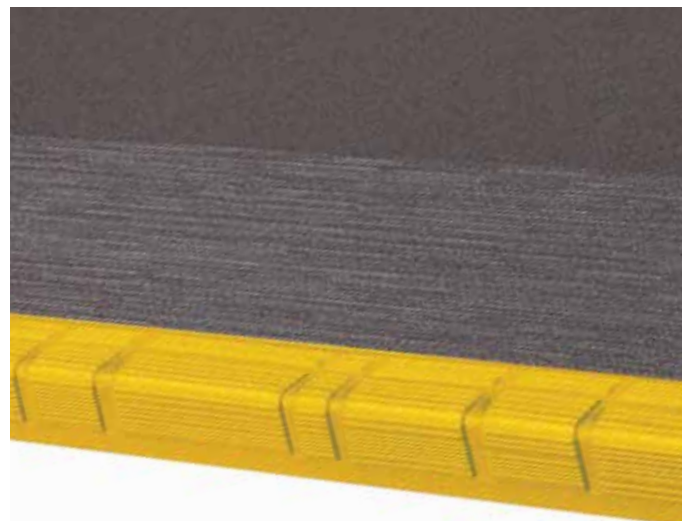
837-8YN

Mudslide w/Yellow Nose



937-8WN

Storm



937-8YN

Storm w/Yellow Nose

# Recommended Product Applications

The following application chart is provided to aid in understanding where our flooring products are recommended for use. This application chart is a subjective recommendation and is predicated upon the adherence to proper installation techniques; specific location of installation; level of foot traffic; and the type and professional level of maintenance practiced on-site. As there is a wide range of variables within an environment and the characteristics of each application may vary significantly, please consult with your CBC® Flooring sales representative to determine which CBC Flooring product is appropriate for your installation.



## Hospital

	Mature® AdVantage	Homogeneous Vinyl/ Tile	Piesta	Lightwood® / Kareina Asento®	Nattice® / Pathways / Stair Treads
Cafeterias/Dining/Break Area	★	★	★	★	★
Chapel, Worship Center	★	★	★	★	★
Corridor (exterior)					★
Corridor (interior)	★	★	★	★	★
Dialysis	★	★	★	★	
Elevator	★	★	★	★	★
Emergency Department	★	★	★	★	
Exam/Prep Room	★	★	★	★	
Gift Shop	★	★	★	★	★
Hydrotherapy Room	★				★
Hyperbaric Room	★	★	★	★	★
Intensive Care	★	★	★	★	
Labor Delivery Room	★	★	★	★	
Laboratory	★	★	★	★	
Lavatory	★	★	★	★	★
Lobby	★	★	★	★	★
Neonatal Intensive Care	★	★	★	★	
Nurse's Station	★	★	★	★	
Office/Admin/Conf. Room	★	★	★	★	★
Operating Room (Outpatient)	★	★		★	
Parking Garage Walkway/ Elevator (exterior)					★
Patient Room	★	★	★	★	
Pharmacy	★	★	★	★	★
Physical Therapy	★	★	★	★	★
Ramp (interior/exterior)					★
Scrub Area	★				★
Shower Area/Room					★
Staff Lounge	★	★	★	★	★
Stairway/Landing (interior/ exterior)					★
Storage/Utility Room	★	★	★	★	★
Waiting Room	★	★	★	★	★



## Assisted Living

	Mature AdVantage	Homogeneous Vinyl/ Tile	Lightwood / Kareina Asento	Piesta	Nattice / Pathways / Stair Treads
Activity Room/Common Area	★	★	★	★	★
Beauty Salon/Barber Shop	★	★	★	★	★
Cafeteria/Dining/Break Area	★	★	★	★	★
Corridor (exterior)					★
Corridor (interior)	★	★	★	★	★
Doctor/Dentist Area	★	★	★	★	★
Elevator	★	★	★	★	★
Lobby	★	★	★	★	★
Office/Admin/Conf. Room	★	★	★	★	★
Pharmacy	★	★	★	★	★
Poolside (interior/exterior)					★
Ramp (interior/exterior)					★
Residence Bathroom	★	★	★	★	★
Residence Kitchen	★	★	★	★	★
Residence Room	★	★	★	★	
Shower Area/Room					★
Staff Lounge	★	★	★	★	★
Stairway/Landing (interior/ exterior)					★
Storage/Utility Room	★	★	★	★	★



## Hospitality

	Mature AdVantage	Homogeneous Vinyl/ Tile	Lightwood / Kareina Asento	Piesta	Nattice / Pathways / Stair Treads
Balcony/Deck					★
Cafeteria/Dining/Break Area	★	★	★	★	★
Corridor (exterior)					★
Corridor (interior)	★	★	★	★	★
Dance Floor	★				★
Elevators	★	★	★	★	★
Exercise Rooms	★	★		★	★
Guest Bathrooms	★	★	★	★	★
Guest Rooms	★	★		★	
Lobby	★	★	★	★	★
Lounges	★	★	★	★	★
Office/Admin/Conf. Room	★	★	★	★	★
Parking Garage Walkway/ Elevator (exterior)					★
Poolside (interior/exterior)					★
Ramp (interior/exterior)					★
Restaurant (dining area)/Bar	★	★	★	★	★
Stairway/Landing (interior/ exterior)					★
Storage/Utility Room	★	★	★	★	★
Vending Area	★	★	★	★	★

# Recommended Product Applications



## Retail

	Mature AdVantage	Homogeneous Vinyl Tile	Piesta	Lightwood® / Kareina Asento®	Nattice® / Pathways / Stair Tre ads
Automobile Showroom	★	★	★	★	★
Cafeteria/Dining/Break Area	★	★	★	★	★
Checkout	★	★	★	★	★
Drug Store	★	★	★	★	★
Entryway/Foyer	★	★	★	★	★
Fast Food Counter (Front)	★	★	★	★	★
Indoor Mall Common Area	★	★	★	★	★
Laundromat	★	★	★	★	★
Lavatory	★	★	★	★	★
Office/Admin/Conf. Room	★	★	★	★	★
Parking Garage Walkway/ Elevator (exterior)					★
Pet Shop	★	★	★	★	★
Ramp (interior/exterior)					★
Sales Floor-Department Store	★	★	★	★	★
Sales Floor-Grocery	★	★	★	★	★
Sales Floor-Grocery Produce Area (wet)					★
Sales Floor-Mass Merchandiser	★	★	★	★	★
Specialty Shop/Boutique	★	★	★	★	★
Stairway/Landing (interior/ exterior)					★



## Office

	Mature AdVantage	Homogeneous Vinyl Tile	Lightwood / Kareina Asento	Piesta	Nattice / Pathways / Stair Tre ads
Break Area/Vending Area	★	★	★	★	★
Cafeteria/Dining Area	★	★	★	★	★
Corridor (exterior)					★
Corridor (interior)	★	★	★	★	★
Elevator	★	★	★	★	★
Entryway/Foyer	★	★	★	★	★
Lavatory	★	★	★	★	★
Lobby	★	★	★	★	★
Office/Admin/Conf. Room	★	★	★	★	★
Parking Garage Walkway/ Elevator (exterior)					★
Ramp (interior/exterior)					★
Stairway/Landing (interior/ exterior)					★
Storage/Utility Room	★	★	★	★	★



## Education

	Mature AdVantage	Homogeneous Vinyl Tile	Lightwood / Kareina Asento	Piesta	Nattice / Pathways / Stair Tre ads
Auditorium	★	★	★	★	★
Cafeteria/Dining/Break Area	★	★	★	★	★
Classroom	★	★	★	★	★
Corridor (exterior)					★
Corridor (interior)	★	★	★	★	★
Dormitory Common Area	★	★	★	★	★
Dormitory Room	★	★	★	★	
Elevator	★	★	★	★	★
Entryway/Foyer	★	★	★	★	★
Laboratory	★	★	★	★	
Lavatory	★	★	★	★	★
Library	★	★	★	★	★
Locker Room (no metal spikes)					★
Multipurpose/Cafeteria		★	★	★	★
Nurses Office/Infirmary	★	★		★	★
Office/Admin/Conf. Room	★	★	★	★	★
Parking Garage Walkway/ Elevator (exterior)					★
Poolside (interior/exterior)					★
Ramp (interior/exterior)					★
Shower Area/Room					★
Stairway/Landing (interior/ exterior)					★
Storage/Utility Room	★	★	★	★	★
Teacher's Lounge	★	★	★	★	★



## Institutional

	Mature AdVantage	Homogeneous Vinyl Tile	Lightwood / Kareina Asento	Piesta	Nattice / Pathways / Stair Tre ads
Airport-Baggage Claim		★	★	★	★
Airport-Check In/Security		★	★	★	★
Airport-Gate Area	★	★	★	★	★
Airport-Jet Bridge					★
Airport-Office	★	★	★	★	★
Airport-Retail	★	★	★	★	★
Arena/Stadium (exterior)					★
Arena/Stadium (interior)	★	★	★	★	★
Cafeteria/Dining/Break Area	★	★	★	★	★
Church	★	★	★	★	★
Civic/Convention Center	★	★	★	★	★
Corridor (exterior)					★
Corridor (interior)	★	★	★	★	★
Courthouse	★	★	★	★	★
Funeral Home	★	★	★	★	★
Lavatory	★	★	★	★	★
Library	★	★	★	★	★
Museum	★	★	★	★	★
Office/Admin/Conf. Room	★	★	★	★	★
Parking Garage Walkway/ Elevator (exterior)					★
Poolside (interior/exterior)					★
Prison	★	★	★	★	★
Ramp (interior/exterior)					★
Stairway/Landing (interior/ exterior)					★
Storage/Utility Room	★	★	★	★	★
Water Park					★

★ Recommended

Note: Takiron products are not recommended in commercial kitchens and immediate adjacent areas.

## Resistance to Staining & Chemicals per ASTM F 925

Agent	Surface Dulling				Surface Attack				Color Change			
	Mature® AdVantage	Kareina Asento®	Homogeneous Vinyl Tile	Nattice™/Pathways/ Stair Treads	Mature AdVantage	Kareina Asento	Homogeneous Vinyl Tile	Nattice/Pathways/ Stair Treads	Mature AdVantage	Kareina Asento	Homogeneous Vinyl Tile	Nattice/Pathways/ Stair Treads
Acetic Acid - 5%	0	0	0	0	0	0	0	0	0	0	0	0
Acetic Acid - 28%	0	0	0	0	0	0	0	0	0	0	0	0
Ammonia - 5%	0	0	0	0	0	0	0	0	0	0	0	0
Ammonium Hydroxide - 10%	0	0	0	0	0	0	0	0	0	0	0	0
Ammonium Hydroxide - 30%	0	0	0	0	0	0	0	0	0	0	0	0
Aniline Blue - 2.5%	0	0	0	0	0	0	0	0	1	0	3	2
Bleach - 5%	0	0	0	0	0	0	0	0	0	0	0	0
Dialysis Solution	0	0	0	0	0	0	0	0	0	3	0	0
Ethyl (Denatured) Alcohol	0	0	0	0	0	0	0	0	0	0	0	0
Formaldehyde - 37%	0	0	0	0	0	0	0	0	0	0	0	0
Giesma Blood Stain	0	0	0	0	0	0	0	0	3	3	3	3
Hand Sanitizer (Alcohol Based)	0	0	0	0	0	0	0	0	0	0	0	0
Hema 3 Solution	0	0	0	0	0	0	0	0	0	0	0	0
Hydrochloric Acid - 5%	0	0	0	0	0	0	0	0	0	0	0	0
Hydrochloric Acid - 38%	0	0	0	0	0	0	0	0	0	0	0	0
Hydrogen Peroxide - 30%	0	0	0	0	0	0	0	0	0	0	0	0
Kerosene	0	0	0	0	0	0	0	0	0	0	0	0
Mineral Oil	0	0	0	0	0	0	0	0	0	0	0	0
Olive Oil	0	0	0	0	0	0	0	0	0	1	0	0
Phenol - 5%	0	0	0	0	0	0	0	0	0	1	1	0
Phenolic Disinfectant Cleaner	0	0	0	0	0	0	0	0	0	1	0	2
Potassium Hydroxide - 15%	0	0	0	0	0	0	0	0	0	0	0	0
Quaternary Disinfectant Cleaner	0	0	0	0	0	0	0	0	0	1	0	0
Rubbing Alcohol (5% Isopropyl)	0	0	0	0	0	0	0	0	0	0	0	0
Sodium Hydroxide - 5%	0	0	0	0	0	0	0	0	0	0	0	0
Sodium Hydroxide - 15%	0	0	0	0	0	0	0	0	0	0	0	0
Sodium Hydroxide - 50%	0	0	0	0	0	0	0	0	0	0	0	0
Sulfuric Acid - 5%	0	0	0	0	0	0	0	0	0	0	1	0
Turpentine	0	0	0	0	0	0	0	0	0	0	0	0
Unleaded Gasoline (Regular Grade)	0	0	0	0	0	0	0	0	0	0	0	3
Uric Acid	0	0	0	0	0	0	0	0	0	1	0	0

0 - No Change

1 - Slight Change

2 - Moderate Change

3 - Severe Change

**Notes:**

According to ASTM, the F925 test method is subjective and test results are nonnumeric;  
 This test is not a stain test - it is intended to determine the effect specific chemicals (or agents) will have on the surface of the flooring;  
 The flooring product is tested without any applied sealers or floor finishes;  
 For the most accurate results, CBC America recommends using the customer's chemicals on actual product samples that have been treated with the maintenance products to be used on the finished floor;  
 Flooring sample material for testing is readily available from CBC America;  
 For more detailed information, please contact CBC America.

# Pathways/Nattice

## Product Characteristics

Standard Spec	ASTM 1303
Classification	Type II
Backing Class	Class B
Nominal Dimensions	6' Wide x 66' Long (1820mm x 20m)
Overall Thickness	0.10" (2.5mm)
Packaging	44 SY per roll

## Fire

ASTM E648 Critical Radiant Flux	Passes
ASTM E662 Smoke Density	Passes <450 Flaming and Non-Flaming

## Test Performance

ASTM F 1303 Standard Spec for Vinyl Floor Covering with Backing	Meets or Exceeds Requirements
ASTM D 2047 Static Coefficient of Friction	≥0.8 ADA Compliant Wet and Dry
ASTM F 970 Static Load Limit	>750 PSI
ASTM F 925 Chemical Resistance	No effects
ASTM F 137 Flexibility	Passes
ASTM F 1914 Residual Indentation	Passes
ASTM F 1514 Resistance to Heat	Exceeds (ΔE < 1)
ASTM F 1515 Resistance to Light	Exceeds (ΔE < 1)
CA 01350 VOC Emissions	Passes Pathways FloorScore Certified FS-03268

## Warranty

Takiron Pathways & Nattice are covered by a limited 5-year warranty. Visit our website, <a href="http://www.cbcflooring.com">www.cbcflooring.com</a> for complete details.
--

CBC Flooring is ISO 9001 and 14001 certified

# Stair Treads

## Product Characteristics

Standard Spec	ASTM F 1303
Classification	Type TV
Tread Thickness	0.10" (2.5mm)
Tread Depth	19.69" (500mm)
Nose Height	1.57" (40mm)
Nosing Thickness	0.165" (4mm)
Packaging	4' Length 7 pcs/ctn 6' Length 5 pcs/ctn

## Fire

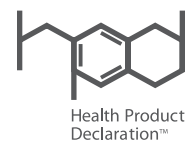
ASTM E648 Critical Radiant Flux	Class 1
ASTM E662 Smoke Density	Passes <450 Flaming and Non-Flaming

## Test Performance

ASTM D 2047 Static Coefficient of Friction	≥0.8 ADA Compliant Wet and Dry
ASTM D 3389 Abrasion Resistance	<0.13 mg/cycle
ASTM F 1514 Resistance to Heat	Exceeds (ΔE < 1)
ASTM F 1515 Resistance to Light	Exceeds (ΔE < 1)
ASTM F 925 Chemical Resistance	No effects
ASTM F 970 Static Load Limit	>600 PSI
CA 01350 VOC Emissions	Passes

## Warranty

Takiron Stair Treads are covered by a limited 5-year warranty. Visit our website, <a href="http://www.cbcflooring.com">www.cbcflooring.com</a> for complete details.
--

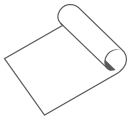


GET SAMPLES FAST 919-230-8700 [cbcflooring.com](http://cbcflooring.com)  
Questions? Give us a call, we're ready to help you create your next great space.

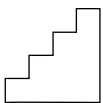
Exclusively from  
**CBC Flooring**

# Step Easy Collection

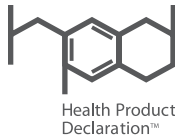
PATHWAYS / NATTICE / STAIR TREADS



**COMMERCIAL  
SHEET FLOORING**



**COMMERCIAL  
STAIR TREADS**



**CBC Flooring is committed to advance sustainability**

by marketing the finest flooring products from around the globe. Our EcoVision™ Policy supports environmental responsibility for the world we all share. We strive to reduce waste, limit the consumption of natural resources and preserve Earth's environment for future generations.

**For more information and sample requests,  
contact CBC Flooring:**

**919-230-8700**

**[www.cbcflooring.com](http://www.cbcflooring.com)**