

Construction Engineering and Inspection Services

for Wiles Road from Riverside Drive to Rock Island Road

ATKINS

Presentation for

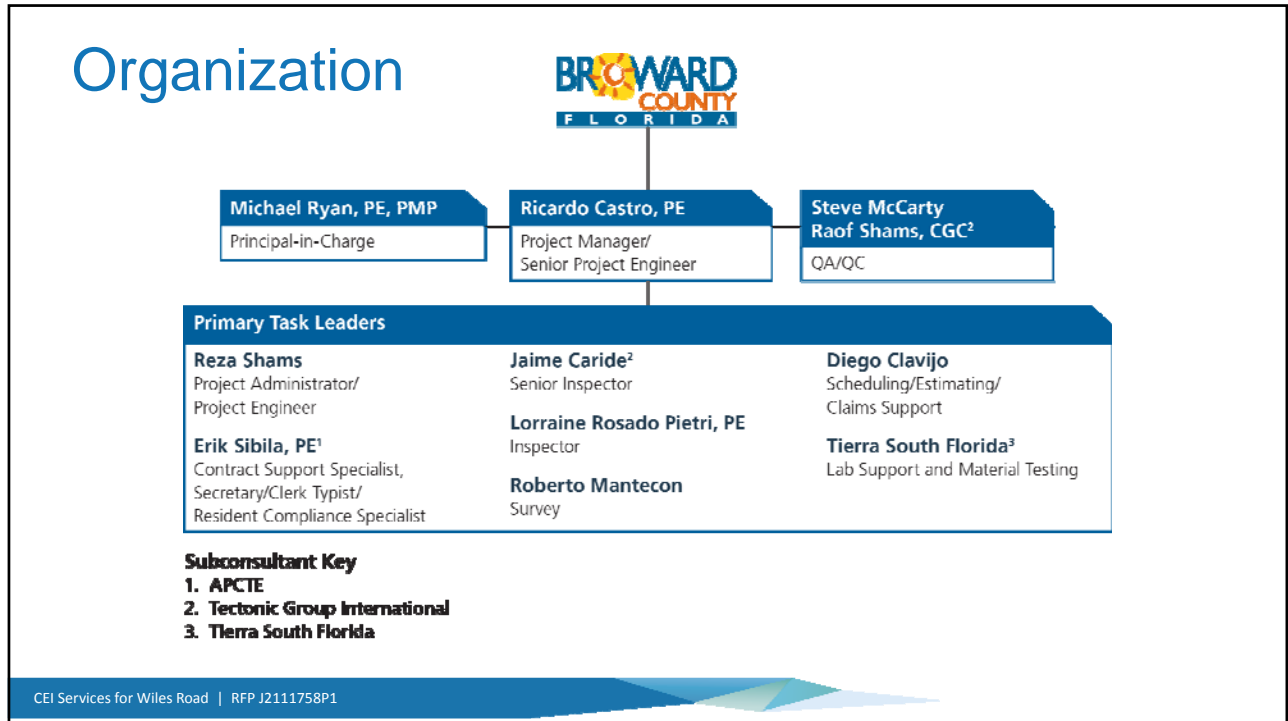


March 3, 2017

Overview

- Staffing
- Project Understanding
- Approach
- Past Performance
- Quality Assurance / Quality Control
- Why the Atkins Team





Key Team Members

Ricardo Castro, PE – Senior Project Engineer

- 15 years diversified construction and engineering design experience

Reza Shams – Project Administrator

- 36 years construction experience; FDOT, SFWMD, MDX, Town of Medley

Erik Sibila, PE (APCTE) – Contract Support Specialist

- 12 years experience, 8 on transportation projects; FDOT, MDX, MDWASD, CMB

Jaime Caride (Tectonic Group) – Senior Inspector

- 11 years construction experience; FDOT, Turnpike, CSX

Lorraine Rosado, PE – Inspector

- 5 years experience in vertical and horizontal construction

Staff Availability

Ricardo Castro, PE	Senior Project Engineer	60%
Reza Shams	Project Administrator/Project Engineer	100%
Erik Sibila, PE	Contract Support Specialist, Resident Compliance Specialist, Inspector	100%
Jaime Caride	Senior Inspector	100%
Lorraine Rosado Pietri, PE	Inspector	100%
Michael Ryan, PE, PMP	Principal-in-Charge	As needed
Steve McCarty	QA/QC	As needed
Raof Shams	QA/QC	As needed
Roberto Mantecon	Survey	As needed
Diego Clavijo	Scheduling/Estimating/Claims Support	As needed

Project Understanding

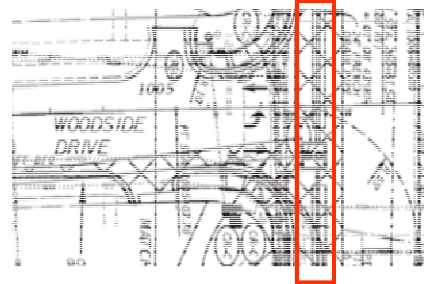
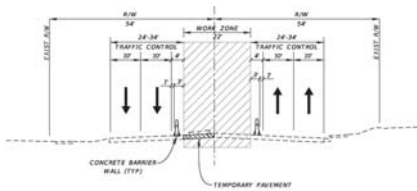
- Multiple funding sources: Coral Springs JPA / FDOT Grant
- Widening 1-mile, 4 to 6 lanes
- Adding bike lanes
- Gravity wall and 'L'-wall
- 3,600 LF drainage (1,500 LF of French drain)
- 69 drainage structures
- 7 drilled shafts (signalization)



- New lighting
- Water main relocation
- 4 Utility Work Schedules
- 4 MOT phases

Approach – Focus Areas

- Alternate MOT Plan
- French Drain
- Drilled Shaft Installation
- Environmental



- Multiple Business Entrances
- Utility Coordination
- Constructability Review

Approach

Cost Control

- CEI Budget
 - Stay within \$1.2M budget
 - Minimize overtime
 - Adjust staff to contractor's schedule
 - Diverse staff experience
- Construction Budget
 - Strictly track quantities installed
 - Validate underruns / overruns
 - Proactively address issues

Schedule Control

- Baseline Schedule
 - Thorough review of activities and durations
 - Verify compliance w/ contract documents
 - Compare with MOT plans
- Monthly Updates
 - Review data file
 - Run multiple reports
 - Compare update with actual field conditions

Past Performance

- Lee County Complete Streets
- Griffin Road (SR 818)
- NW 25th Street Viaduct
- Water Farm for C-23 Canal
- University Drive Widening
- US 27 Widening and Ped improvements
- SR 826 Landscape improvements

Experience Matrix							
NAME	Signals	Road Widening	Utility Coordination	Drainage	JPA	MOT Certified	FDEP Stormwater
Ricardo Castro, PE Senior Project Engineer	X	X	X	X	X	Adv	X
Reza Shams Project Administrator	X	X	X	X	X	Adv	X
Erik Sibila, PE Contract Support Specialist	X	X	X	X	X	Adv	X
Jaime Caride Senior Inspector	X	X	X	X	X	Int	X
Lorraine Rosado-Pietri, PE Inspector	X	X	X	X		Adv	

Quality Assurance / Quality Control

➤ **Project Specific Quality Manual**

A. Atkins CEI Team Quality Assurance Management Plan (QAMP)

- **Quality Assurance Procedures (QAPs)**
- **Quality Audits (Scheduled & Surveillance)**
- **Control of Quality Documents**
- **Quality Assurance Testing Engineering/Laboratory Quality Plan**

B. General Contractor Construction Quality Control Plan (CQCP)

- **Maintenance of Traffic Quality Plan**
- **Construction Quality Control Procedures – Testing and Inspection**
- **Sub-contractors Quality Control Plan**
- **Quality Control Testing Engineering/Laboratory Quality Plan**
- **Material Certification Plan**



Quality Assurance / Quality Control

➤ ROLES AND RESPONSIBILITIES

EVERYONE is responsible for implementing the Quality Management requirements on the project.

➤ The Atkins CEI team will, as a minimum, provide the following Quality Assurance Services:

- **Review & accept** procedures intended for the quality assurance and quality control of the works;
- **Recommend and agree** with the Contractor any such improvements to the Contractor's quality assurance and quality control systems, as per Broward County & FDOT requirements;
- **Monitor** testing activities in the Contractor's/subcontractor's to ensure properly carried out and inspect/audit compliance of results;
- **Monitor** QC & Verification sampling in the field to ensure compliance with testing procedures;
- **Verify** the Contractor has a robust system for the periodic checking as per project specific QMS;
- **Review** materials testing results to ensure compliance with specifications and recommendations;
- **Undertake** verification sample taking and coordinate testing for required independent testing;
- **Review** all independent laboratory test results submitted by the contractor as part of the material approval process; and
- **Witness & Inspect** as per proactive Witness & Hold procedure & witness critical tests as required.

Why the Atkins Team

- Outstanding leadership in Broward County
- A cohesive team with proven results
- Highly qualified and trained personnel
 - Multiple Professional Engineers (PEs)
 - CTQP / OSHA certifications
- We have the resources to meet the County's needs (100+ personnel)
- Local, well positioned to promote coordination and project success



