

## CEILING-MOUNTED BRIDGE CRANES

### BUILD ON WHAT YOU ALREADY HAVE

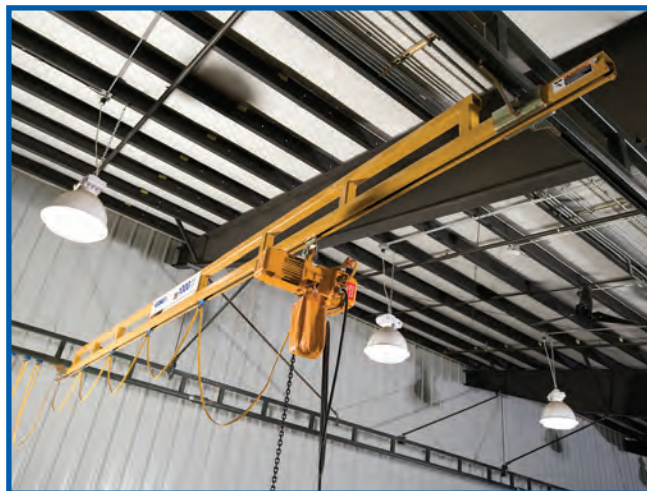
**Spanco® Ceiling-Mounted Bridge Cranes** make the most of your facility and production floor space. By mounting the crane to your existing building structure, you'll save the cost of support columns and headers – while eliminating any interference they might have caused.

- Hangs from existing roof beams or trusses.
- Requires no system support columns and no attachments to building columns.
- Preserves production floor space, so forklifts and other machinery can easily pass beneath the system.
- Allows you to readily add runway lengths, bridges, and links to monorail crane systems at any time.

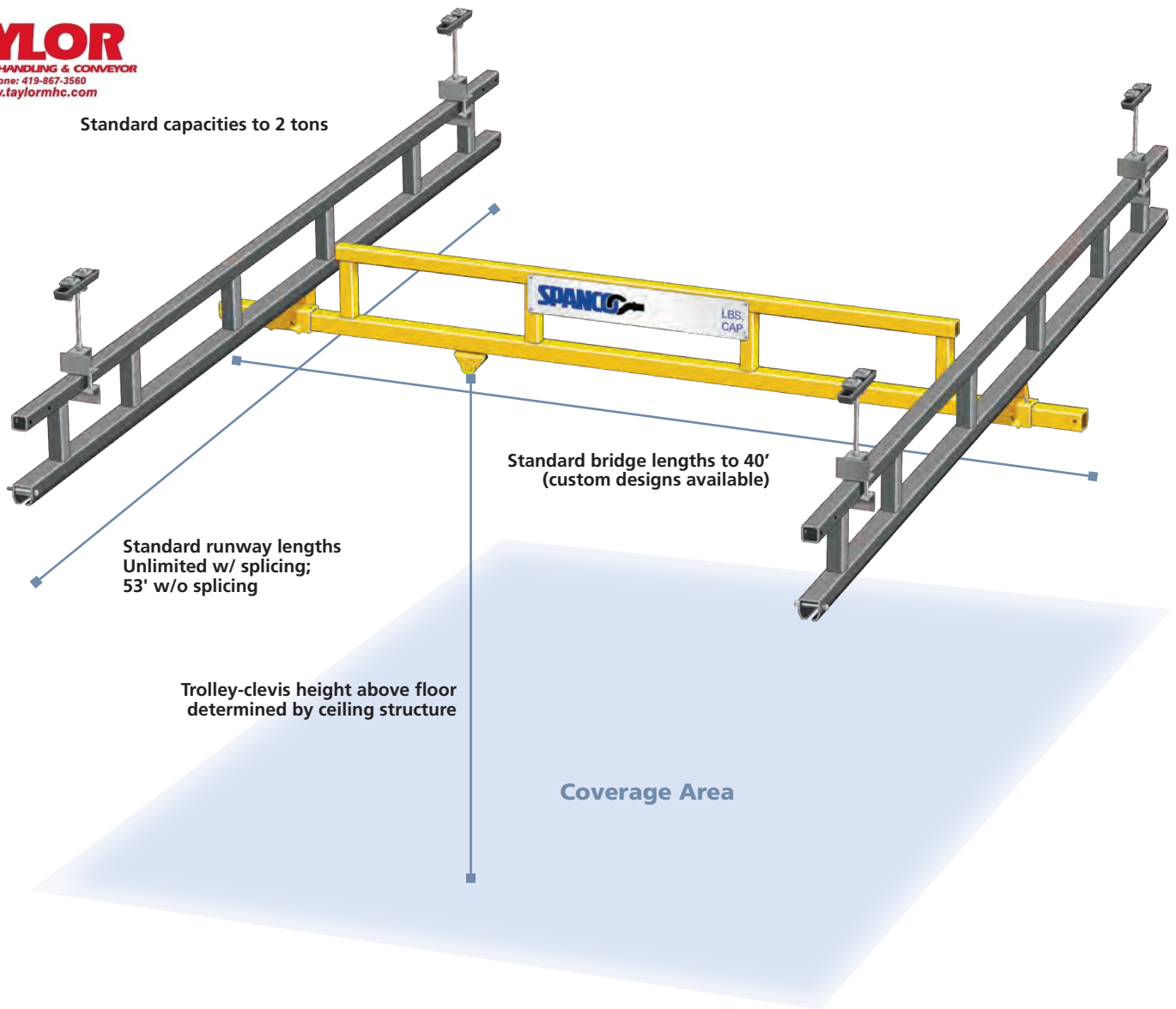


*A refrigerator manufacturer using a 250-pound capacity Spanco Ceiling-Mounted Bridge Crane.*

*Spanco Ceiling-Mounted Bridge Cranes have numerous mounting configurations to adapt to a variety of roof support structures. See page 23 for more information.*



Standard capacities to 2 tons



## SPANCO® CEILING-MOUNTED BRIDGE CRANES

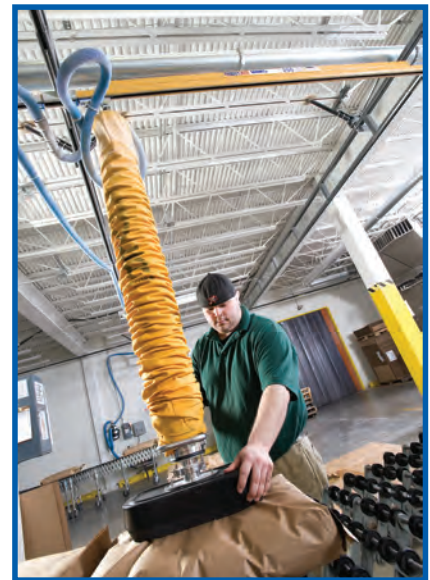
**Capacities:** 250 to 4000 lbs.

**Bridge Lengths:** 34' Standard;  
(Overall) available to 40'

**Runway Support Centers:** 40' Standard

**Runway Lengths:** Unlimited w/ splicing;  
53' w/o splicing

**Height:** Determined by ceiling structure &  
(Floor-to-Trolley Clevis) application; we recommend as  
low as practical to minimize  
trolley resistance.



*Like all Spanco Bridge Cranes, this ceiling-mounted system is compatible with numerous hoists, manipulators, and balancers. In this plant, a vacuum lifter is used to palletize large sacks of flour.*

# ALU-TRACK BRIDGE CRANES AND RUNWAYS

## OUR MOST AGILE CRANES

**For super-responsive crane performance,** we make Spanco® Alu-Track® Bridge Cranes and Runways from our lightweight aluminum enclosed track.

Not only are these bridges easier to move, but Alu-Track bridges and runways put less weight on your roof support structure for ceiling-mounted systems, expanding their applicability.

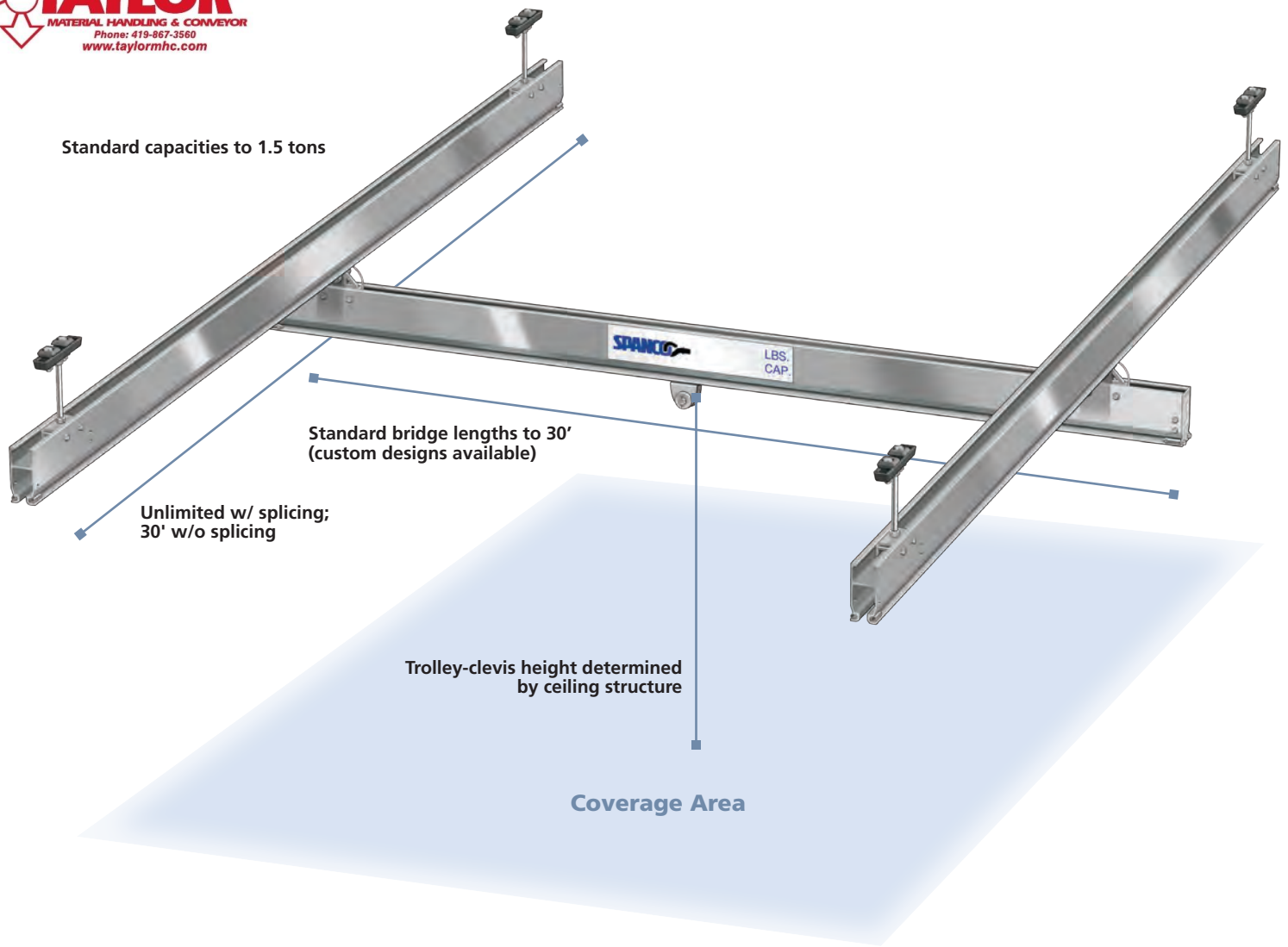
In addition, Alu-Track bridges and runways are highly durable, non-corroding, and maintenance-free, making them suitable for:

- Clean rooms
- Refrigerated areas, including food packaging applications
- Moisture-laden environments
- Acidic environments (but not for base/alkaline)
- R&D labs
- Wherever highly agile cranes are required



*A worker uses a 1000-pound capacity Spanco Alu-Track Bridge Crane to position product in her work area.*





## SPANCO ALU-TRACK BRIDGE CRANES

**Track Applications:** Workstation bridge cranes & runways (including monorails)

**Material:** Extruded, high-strength, 6061-T6 aluminum alloy

**Capacities:** 250 to 3000 lbs.

**Bridge Lengths:** 31' Standard (dependant on load capacity)

**Runway Support Centers:** 29' Standard (dependant on load capacity)

**Runway Lengths:** Unlimited with splicing; 30' without splicing

**Height:** Determined by ceiling structure and application; we recommend as low as practical to minimize trolley resistance.  
(Floor-to-Trolley Clevis)

*Alu-Track system with aluminum runway and bridge*



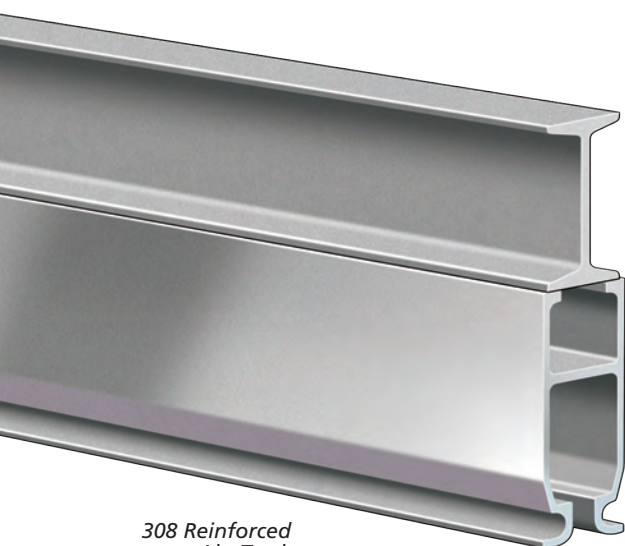
# ALU-TRACK BRIDGE CRANES AND RUNWAYS



306 Alu-Track



308 Alu-Track



308 Reinforced  
Alu-Track

## TRACK PROFILES AND SERIES

**306 Alu-Track:** Overall height of 6 inches, with same internal dimensions as the Spanco® 600 Series steel enclosed track.

**308 Alu-Track:** Overall height of 8 inches, with same internal dimensions as the Spanco 700 Series steel enclosed track.

**Reinforced 308 Alu-Track:** Overall height of 12.5 inches, with same internal dimensions as the Spanco 700 Series steel enclosed track, plus an extruded, reinforcing strong-back for heavier loads and longer spans.

### Alu-Track Configurations

Alu-Track internal profiles are identical to Spanco 600 and 700 Series steel enclosed track, allowing interchangeable use of aluminum bridges on steel runways.



*Alu-Track Bridge  
with Steel Runways*

*Steel to Alu-Track  
Extended End Truck  
(for bridges longer  
than 23 feet)*

*Steel Runway to Alu-Track Bridge Standard  
End Truck (for bridges less than 23 feet)*

*Alu-Track Monorail*