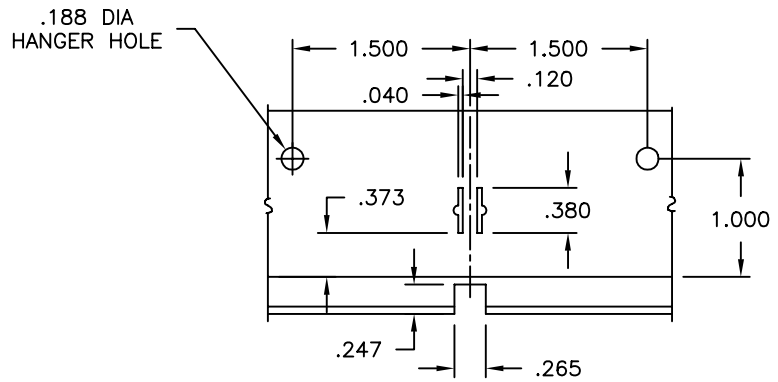
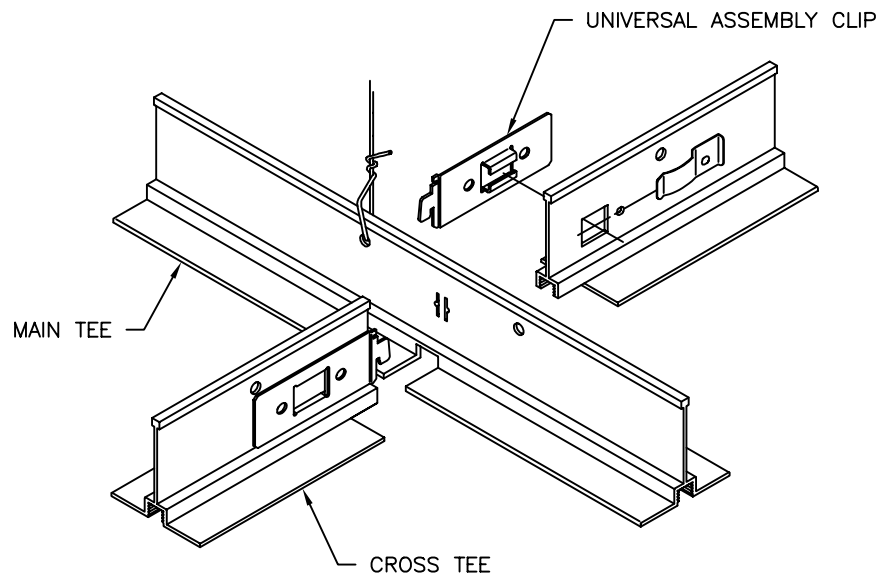
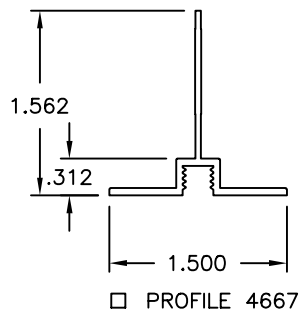
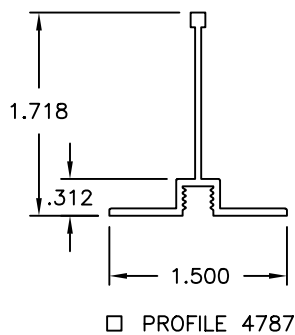


STANDARD END DETAIL



STANDARD REGIMENTATION & TRU-SLOT DETAIL



ASSEMBLY DETAIL

**MATERIAL:**

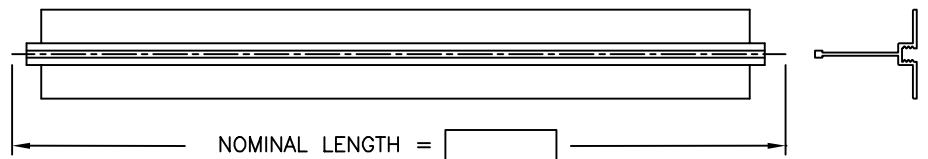
- EXTRUDED ALUMINUM

**FINISH:**


- B12 WHITE

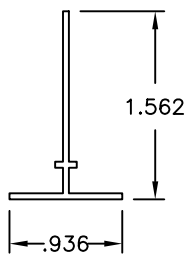
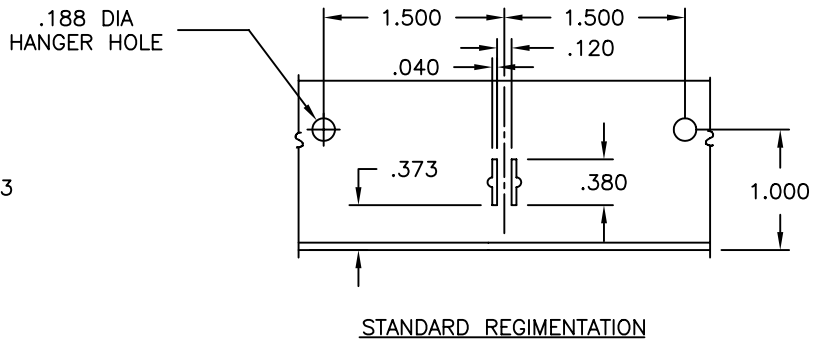
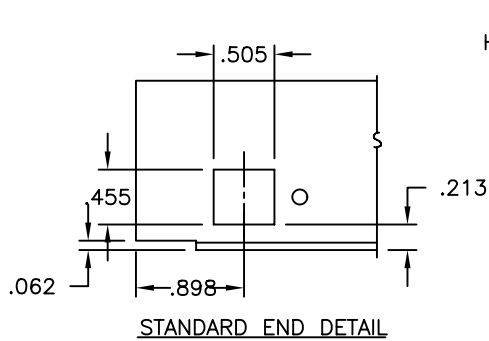
**NOTES:**

- REGIMENTATION AT  O/C
- THROUGH SLOTS AT  O/C
- c/w UNIVERSAL ASSEMBLY CLIPS

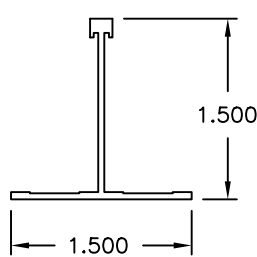


ALL METRIC DIMENSIONS ( ) ARE SOFT CONVERTED. IMPERIAL DIMENSIONS ARE CONVERTED TO METRIC AND ROUNDED TO THE NEAREST MILLIMETER.

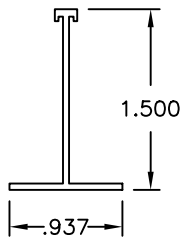
<b>PROJECT:</b>		<b>price®</b>		
<b>ENGINEER:</b>			<b>UNITEE</b> 4667 / 4787 CROSS TEE	
<b>CUSTOMER:</b>				230582
<b>SUBMITTAL DATE:</b>	<b>SPEC. SYMBOL:</b>			DEC 1999



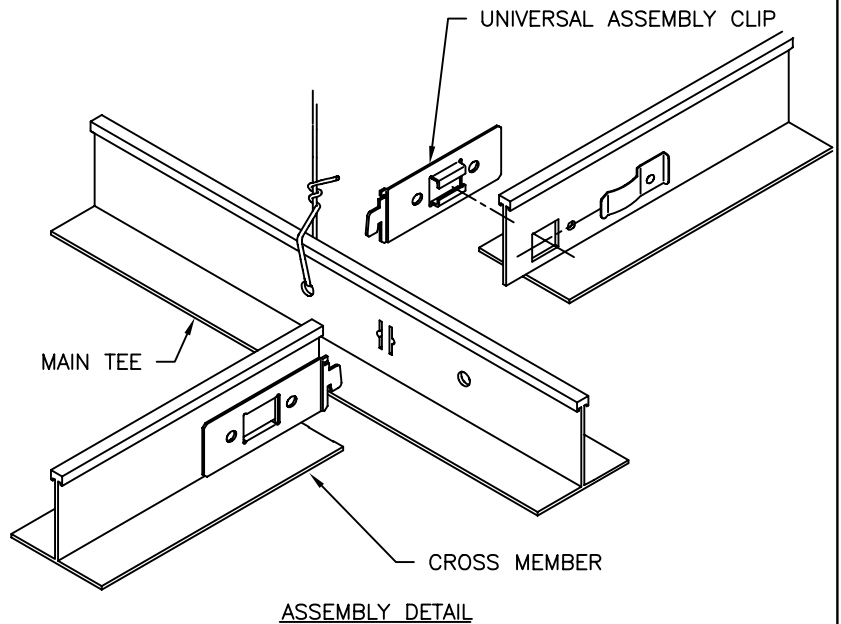
□ PROFILE 4683



□ PROFILE 4818



□ PROFILE 4823



**MATERIAL:**

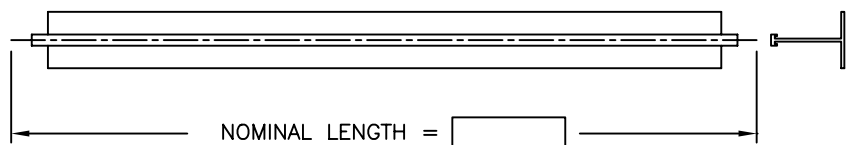
- EXTRUDED ALUMINUM

**FINISH:**

- B12 WHITE

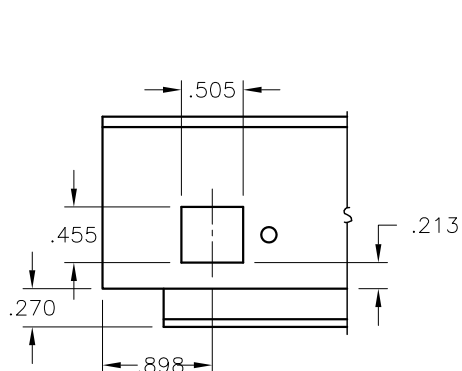
**NOTES:**

- REGIMENTATION AT  O/C
- c/w UNIVERSAL ASSEMBLY CLIPS

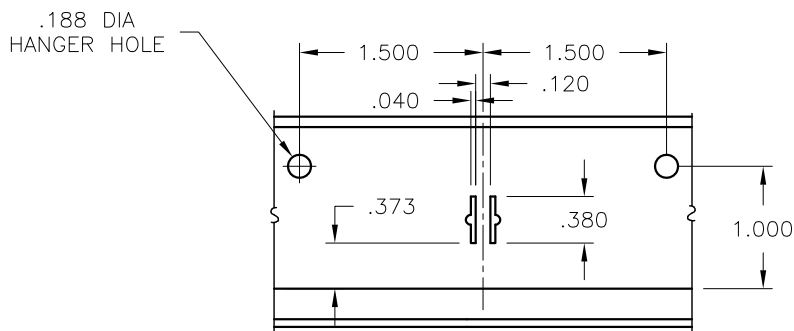


ALL METRIC DIMENSIONS ( ) ARE SOFT CONVERTED. IMPERIAL DIMENSIONS ARE CONVERTED TO METRIC AND ROUNDED TO THE NEAREST MILLIMETER.

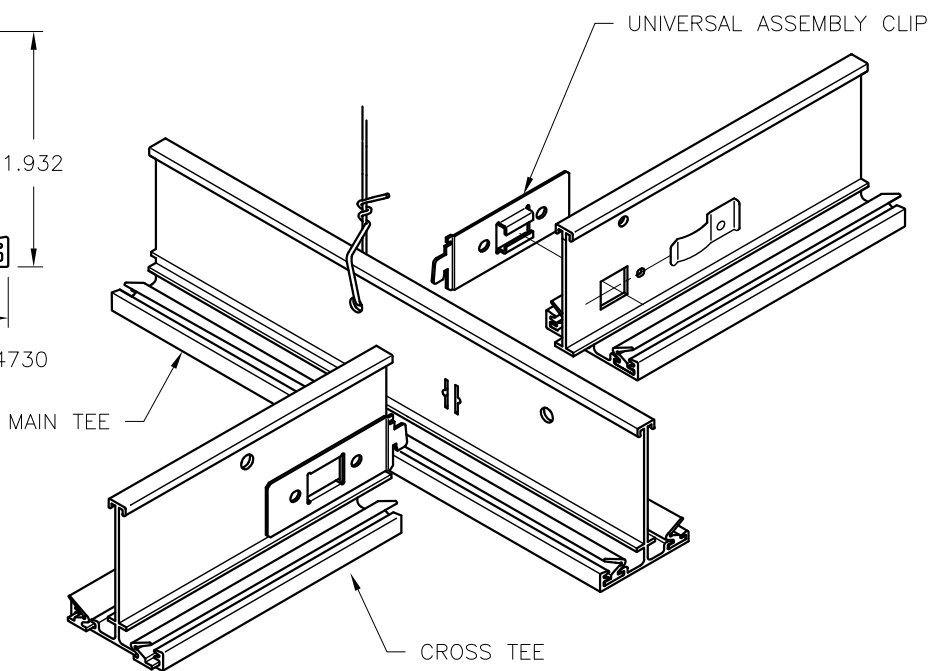
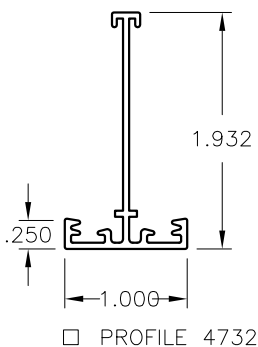
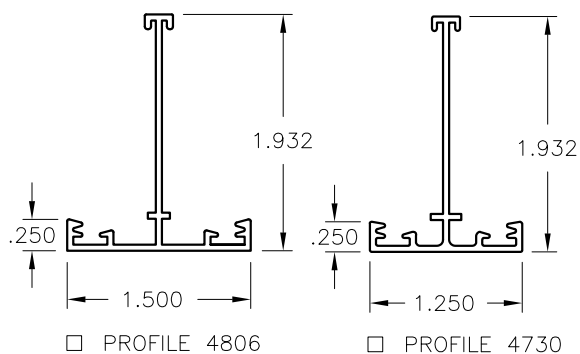
<b>PROJECT:</b>		<b>PRICE®</b>	
<b>ENGINEER:</b>		<b>BG</b>	<b>UNITEE</b> 4683, 4818, 4823 CROSS TEE
<b>CUSTOMER:</b>		230583	
<b>SUBMITTAL DATE:</b>	<b>SPEC. SYMBOL:</b>	JULY 2004	



STANDARD END DETAIL



STANDARD REGIMENTATION



ASSEMBLY DETAIL

**MATERIAL:**

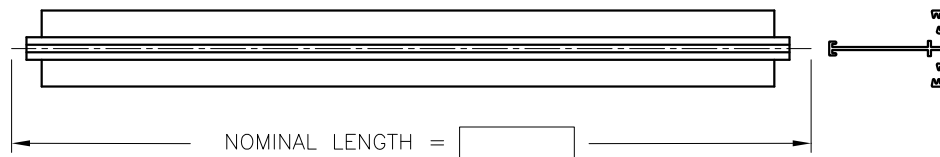
- EXTRUDED ALUMINUM

**FINISH:**


- B12 WHITE POWDER COAT

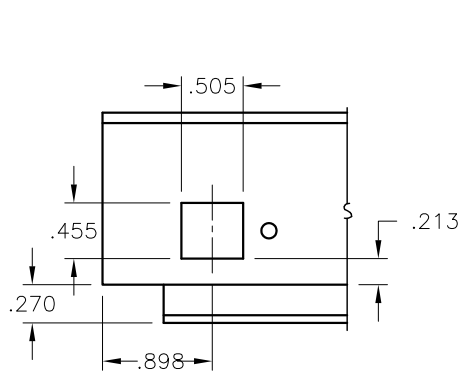
**NOTES:**

- REGIMENTATION AT  O/C
- c/w UNIVERSAL ASSEMBLY CLIPS

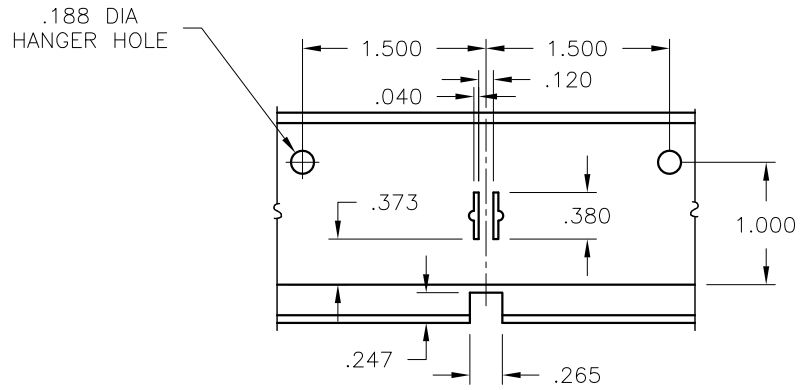


ALL METRIC DIMENSIONS ( ) ARE SOFT CONVERTED. IMPERIAL DIMENSIONS ARE CONVERTED TO METRIC AND ROUNDED TO THE NEAREST MILLIMETER.

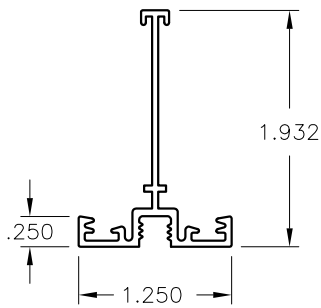
<b>PROJECT:</b>		<b>price®</b>		
<b>ENGINEER:</b>			<b>UNITEE CR</b> 4806, 4730, 4732 CROSS TEE	
<b>CUSTOMER:</b>				230584
<b>SUBMITTAL DATE:</b>	<b>SPEC. SYMBOL:</b>			2010/11/29



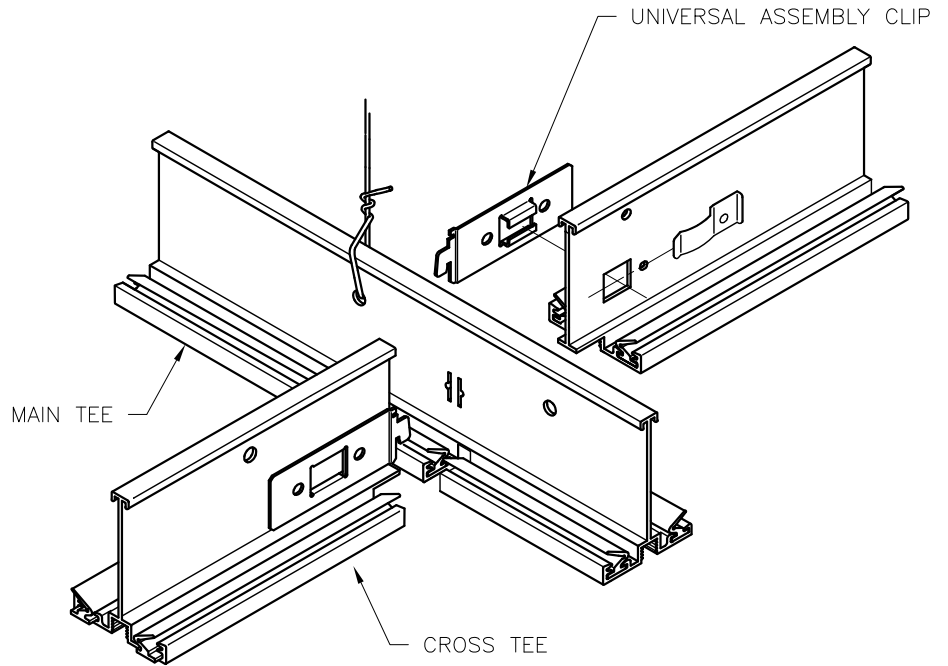
STANDARD END DETAIL



STANDARD REGIMENTATION & THRU-SLOT DETAIL



□ PROFILE 4726



ASSEMBLY DETAIL

**MATERIAL:**

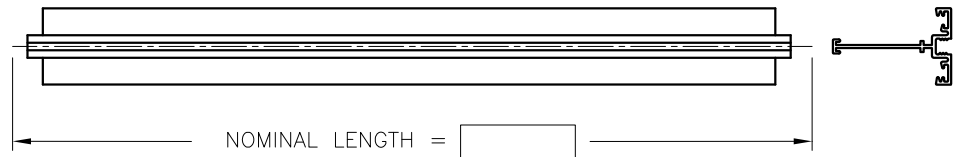
- EXTRUDED ALUMINUM

**FINISH:**


- B12 WHITE POWDER COAT

**NOTES:**

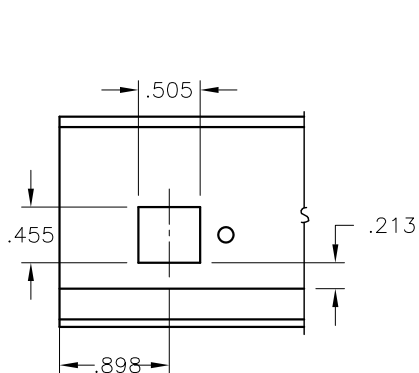
- REGIMENTATION AT  O/C
- THROUGH SLOTS AT  O/C
- c/w UNIVERSAL ASSEMBLY CLIPS



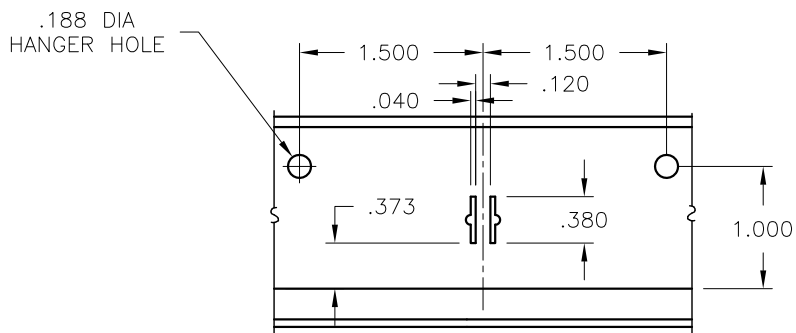
ALL METRIC DIMENSIONS ( ) ARE SOFT CONVERTED. IMPERIAL DIMENSIONS ARE CONVERTED TO METRIC AND ROUNDED TO THE NEAREST MILLIMETER.

<b>PROJECT:</b>		<b>PRICE®</b>		
<b>ENGINEER:</b>			<b>UNITEE CR</b> 4726 CROSS TEE	
<b>CUSTOMER:</b>				230585
<b>SUBMITTAL DATE:</b>	<b>SPEC. SYMBOL:</b>			2010/11/29

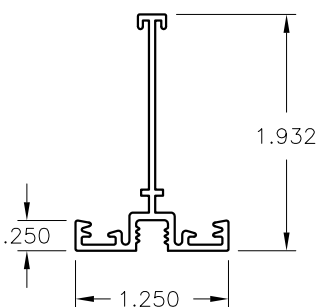
4726  
CROSS TEE



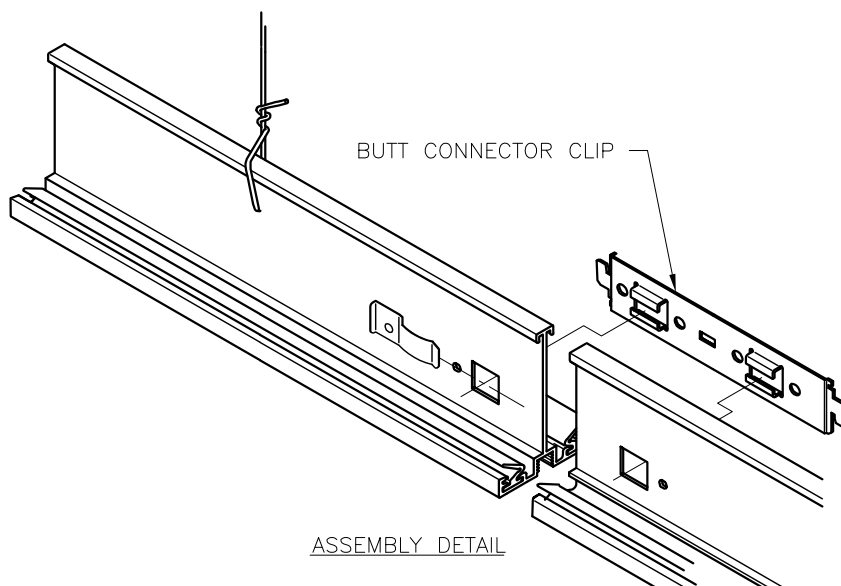
BUTT END DETAIL



STANDARD REGIMENTATION



□ PROFILE 4726



ASSEMBLY DETAIL

**MATERIAL:**

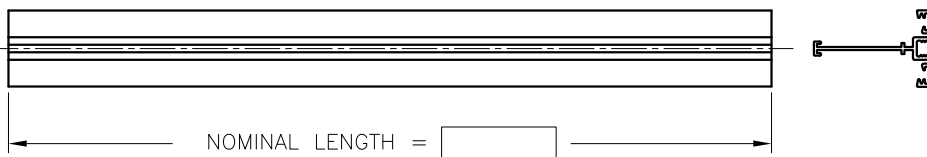
- EXTRUDED ALUMINUM

**FINISH:**


- B12 WHITE POWDER COAT

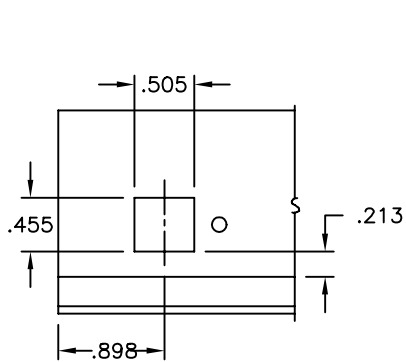
**NOTES:**

- REGIMENTATION AT  O/C
- c/w BUTT CONNECTOR CLIPS

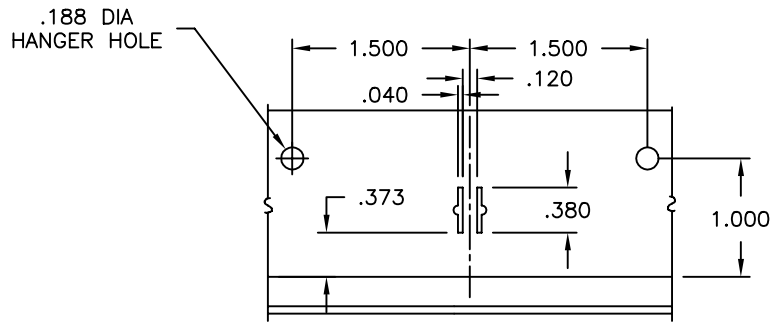


ALL METRIC DIMENSIONS ( ) ARE SOFT CONVERTED. IMPERIAL DIMENSIONS ARE CONVERTED TO METRIC AND ROUNDED TO THE NEAREST MILLIMETER.

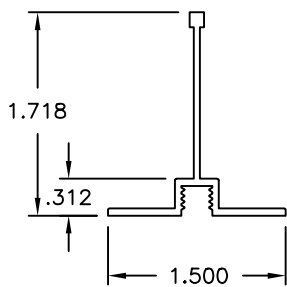
<b>PROJECT:</b>		<b>price®</b>	
<b>ENGINEER:</b>			<b>UNITEE CR</b> 4726 MAIN TEE
<b>CUSTOMER:</b>			
<b>SUBMITTAL DATE:</b>			
<b>SPEC. SYMBOL:</b>		230586	
		2010/11/29	



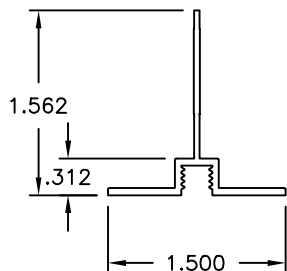
BUTT END DETAIL



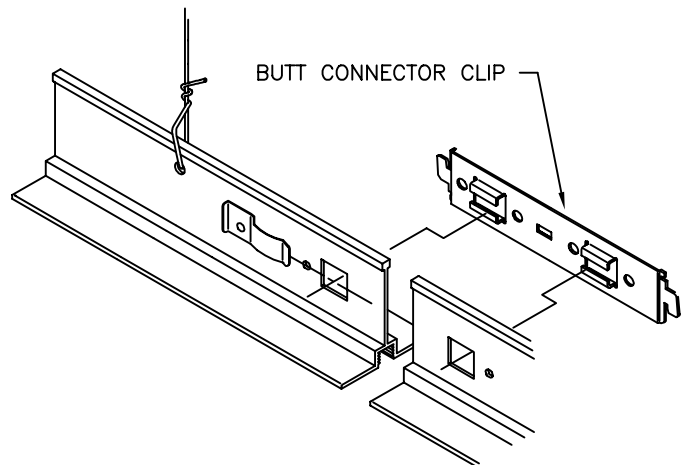
STANDARD REGIMENTATION DETAIL



□ PROFILE 4787



□ PROFILE 4667



ASSEMBLY DETAIL

**MATERIAL:**

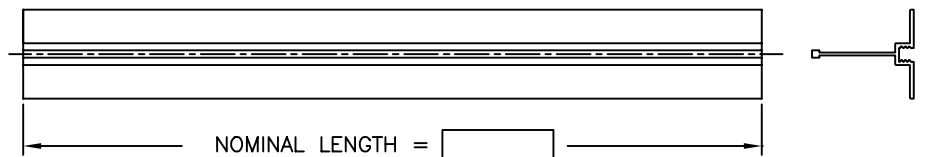
- EXTRUDED ALUMINUM

**FINISH:**


- B12 WHITE

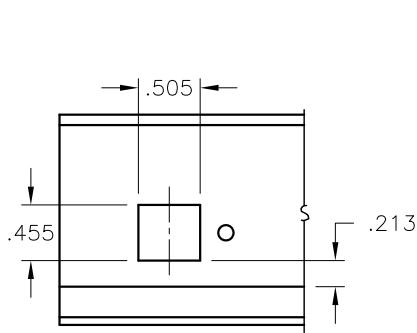
**NOTES:**

- REGIMENTATION AT  O/C
- THROUGH SLOTS AT  O/C
- c/w BUTT CONNECTOR CLIPS

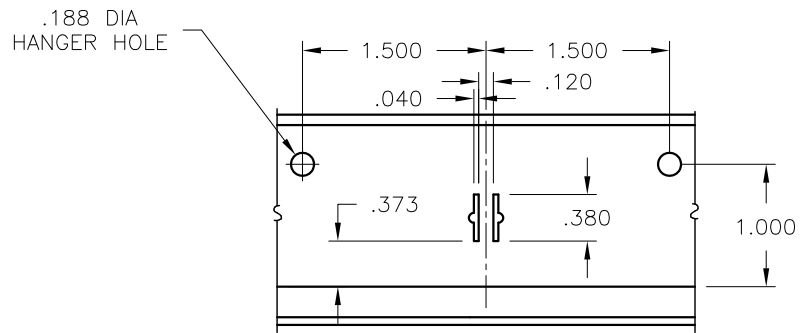


ALL METRIC DIMENSIONS ( ) ARE SOFT CONVERTED. IMPERIAL DIMENSIONS ARE CONVERTED TO METRIC AND ROUNDED TO THE NEAREST MILLIMETER.

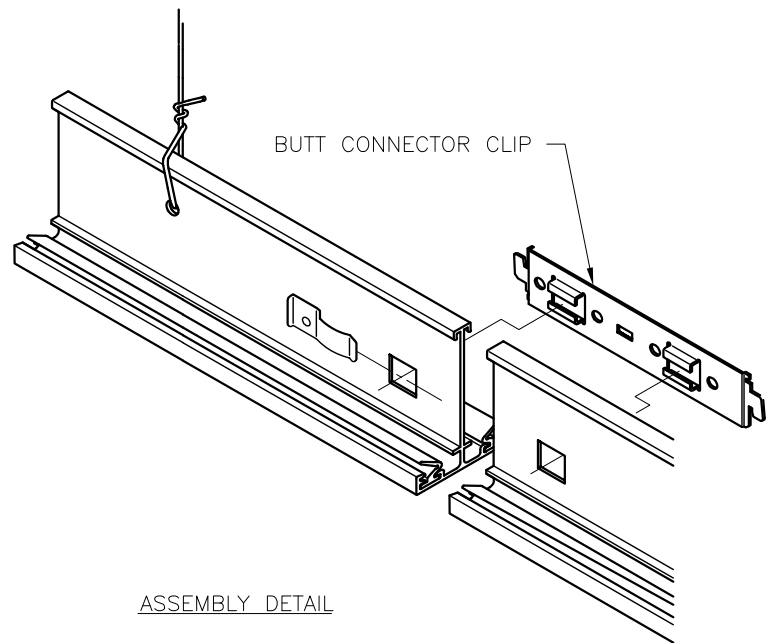
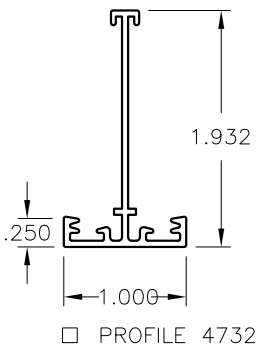
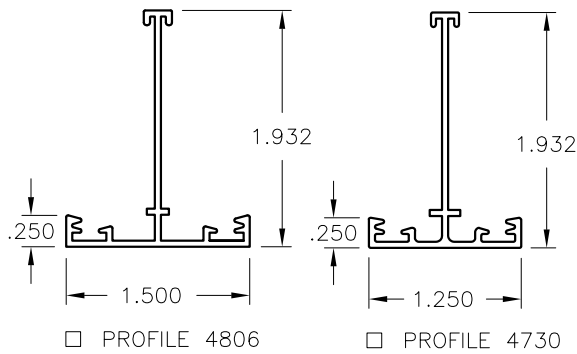
<b>PROJECT:</b>		<b>price®</b>	
<b>ENGINEER:</b>		 230587 DEC 1999	<b>UNITEE</b> 4667 / 4787 MAIN TEE
<b>CUSTOMER:</b>			
<b>SUBMITTAL DATE:</b>	<b>SPEC. SYMBOL:</b>		



STANDARD END DETAIL



STANDARD REGIMENTATION



ASSEMBLY DETAIL

**MATERIAL:**

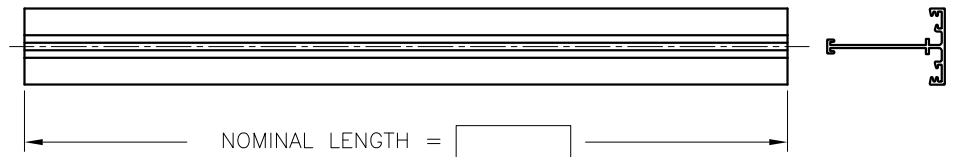
- EXTRUDED ALUMINUM

**FINISH:**


- B12 WHITE POWDER COAT

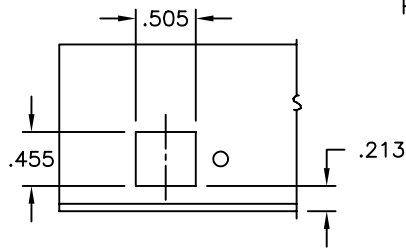
**NOTES:**

- REGIMENTATION AT  O/C
- c/w BUTT CONNECTOR CLIPS

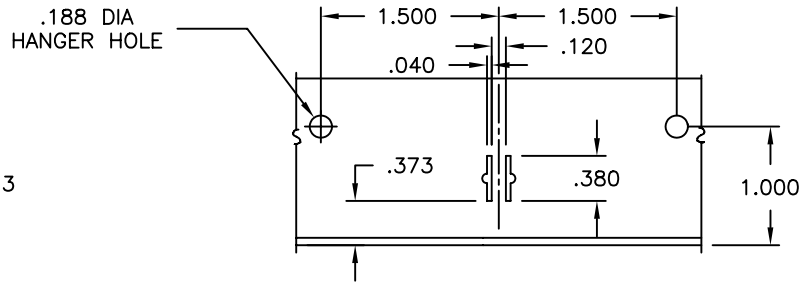


ALL METRIC DIMENSIONS ( ) ARE SOFT CONVERTED. IMPERIAL DIMENSIONS ARE CONVERTED TO METRIC AND ROUNDED TO THE NEAREST MILLIMETER.

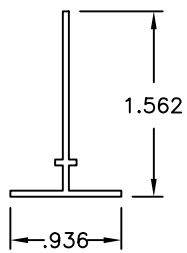
<b>PROJECT:</b>		<b>price®</b>	
<b>ENGINEER:</b>			<b>UNITEE CR</b> 4806, 4730, 4732 MAIN TEE
<b>CUSTOMER:</b>			
<b>SUBMITTAL DATE:</b>	<b>SPEC. SYMBOL:</b>		



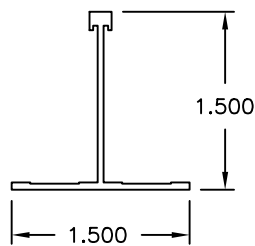
STANDARD END DETAIL



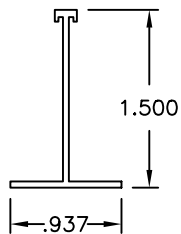
STANDARD REGIMENTATION



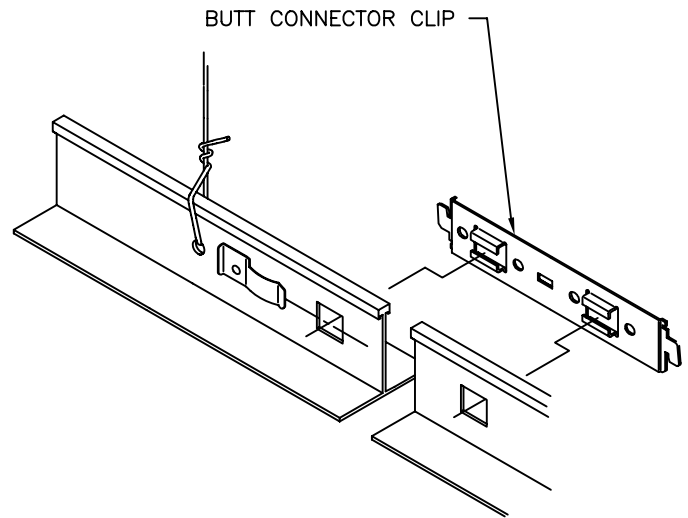
□ PROFILE 4683



□ PROFILE 4818



□ PROFILE 4823



ASSEMBLY DETAIL

**MATERIAL:**

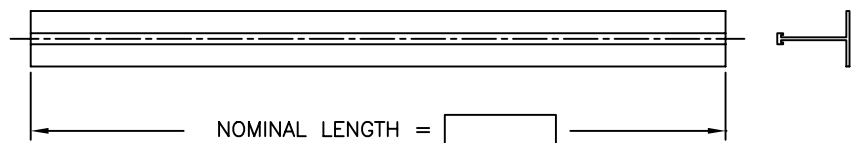
- EXTRUDED ALUMINUM

**FINISH:**

- B12 WHITE

**NOTES:**

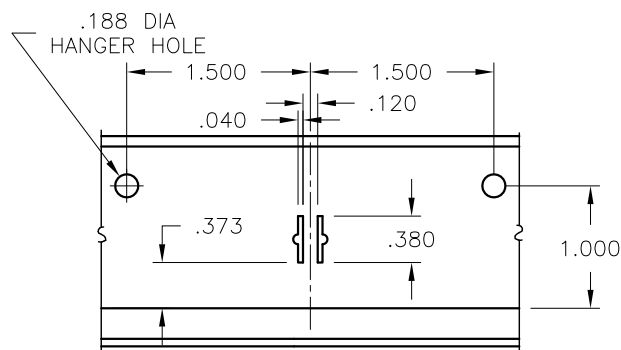
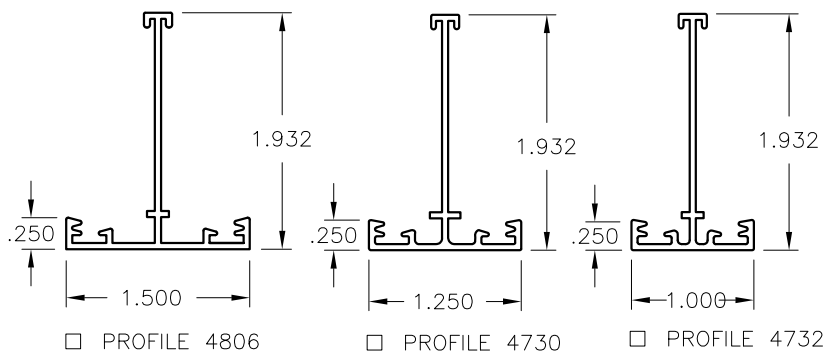
- REGIMENTATION AT  O/C
- c/w BUTT CONNECTOR CLIPS



ALL METRIC DIMENSIONS ( ) ARE SOFT CONVERTED. IMPERIAL DIMENSIONS ARE CONVERTED TO METRIC AND ROUNDED TO THE NEAREST MILLIMETER.

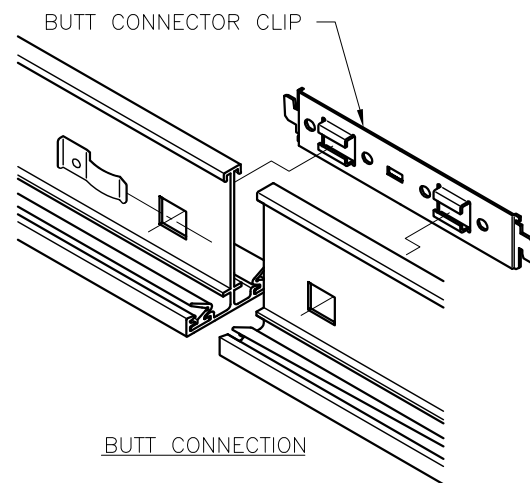
<b>PROJECT:</b>		<b>PRICE®</b>	
<b>ENGINEER:</b>		<b>BG</b>	<b>UNITEE</b> 4683, 4818, 4823 MAIN TEE
<b>CUSTOMER:</b>		230589	
<b>SUBMITTAL DATE:</b>	<b>SPEC. SYMBOL:</b>	JULY 2004	



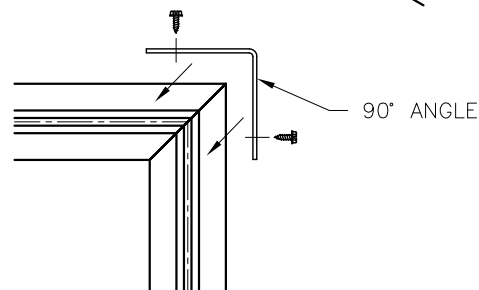


STANDARD REGIMENTATION

LEFT END CONDITION	RIGHT END CONDITION
<p>□ BUTT END</p>	<p>BUTT END □</p>
<p>□ MITRE R</p>	<p>MITRE L □</p>
<p>□ MITRE L</p>	<p>MITRE R □</p>



BUTT CONNECTION



MITRE ASSEMBLY

**MATERIAL:**

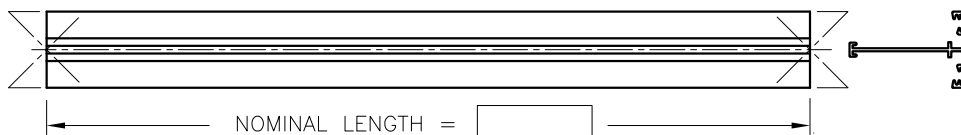
- EXTRUDED ALUMINUM

**FINISH:**

- B12 WHITE POWDER COAT

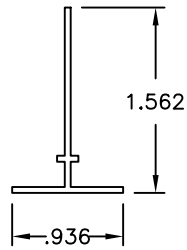
**NOTES:**

- c/w BUTT CONNECTOR CLIPS IF REQUIRED
- MITRES ARE 45° UNLESS OTHERWISE SPECIFIED
- c/w 90° ANGLE UNLESS OTHERWISE SPECIFIED
- REGIMENTATION AT  O/C

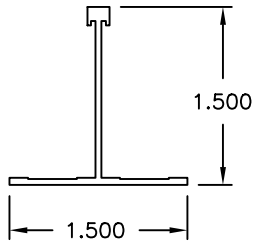


ALL METRIC DIMENSIONS ( ) ARE SOFT CONVERTED. IMPERIAL DIMENSIONS ARE CONVERTED TO METRIC AND ROUNDED TO THE NEAREST MILLIMETER.

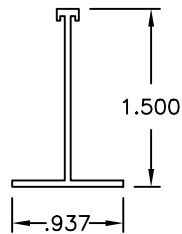
<b>PROJECT:</b>		<b>PRICE®</b>	
<b>ENGINEER:</b>			<b>UNITEE CR</b> 4806, 4730, 4732 PERIMETER TEE
<b>CUSTOMER:</b>			
<b>SUBMITTAL DATE:</b>	<b>SPEC. SYMBOL:</b>	230590	
		2010/11/29	



☐ PROFILE 4683

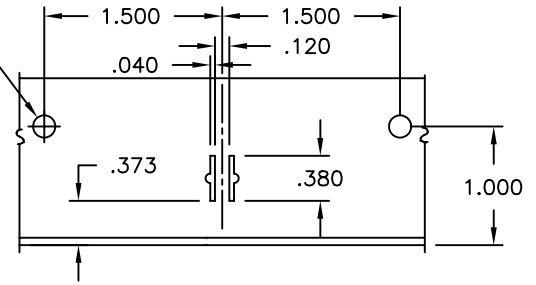


☐ PROFILE 4818

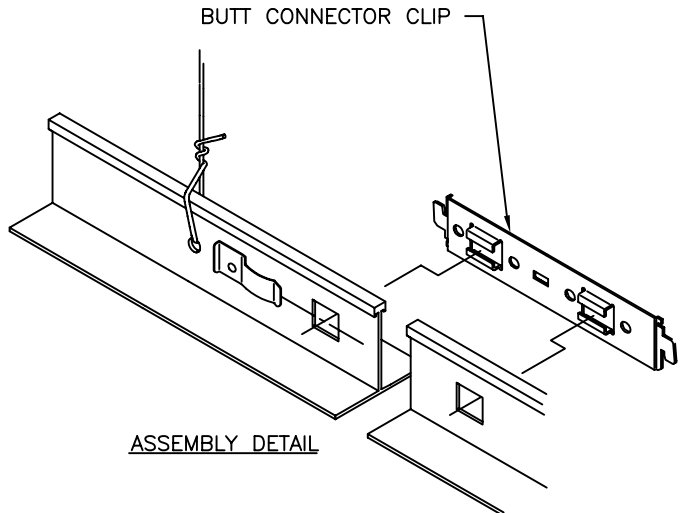


☐ PROFILE 4823

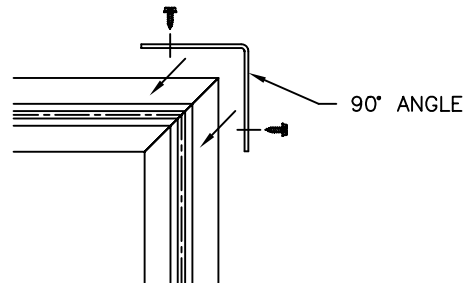
.188 DIA  
HANGER HOLE



STANDARD REGIMENTATION



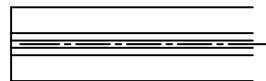
ASSEMBLY DETAIL



MITRE ASSEMBLY

**LEFT END CONDITION**

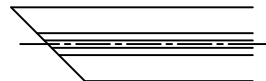
**RIGHT END CONDITION**



☐ BUTT END



BUTT END ☐



☐ MITRE R



MITRE L ☐



☐ MITRE L



MITRE R ☐

**MATERIAL:**

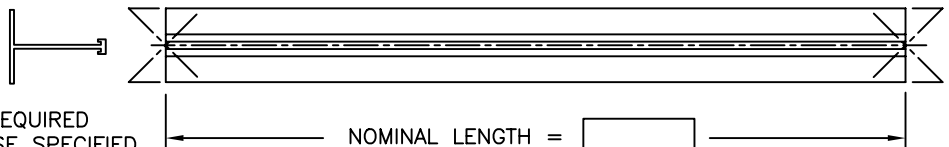
- EXTRUDED ALUMINUM

**FINISH:**

- B12 WHITE

**NOTES:**

- c/w BUTT CONNECTOR CLIPS IF REQUIRED
- MITRES ARE 45° UNLESS OTHERWISE SPECIFIED
- c/w 90° ANGLE UNLESS OTHERWISE SPECIFIED
- REGIMENTATION AT  O/C



NOMINAL LENGTH =

ALL METRIC DIMENSIONS ( ) ARE SOFT CONVERTED. IMPERIAL DIMENSIONS ARE CONVERTED TO METRIC AND ROUNDED TO THE NEAREST MILLIMETER.

**PROJECT:**

**PRICE®**

**ENGINEER:**

**BG**

**CUSTOMER:**

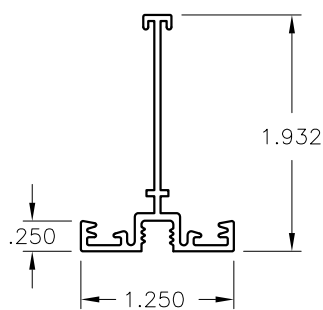
230591

**SUBMITTAL DATE:**

**SPEC. SYMBOL:**

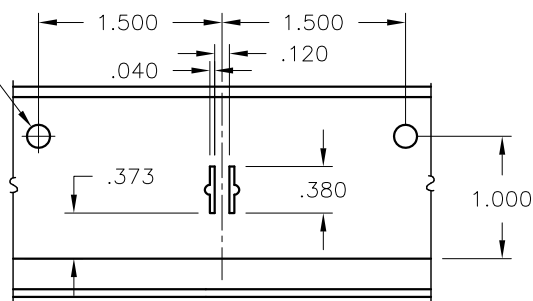
JULY 2004

**UNITEE**  
4683, 4818, 4823  
PERIMETER TEE



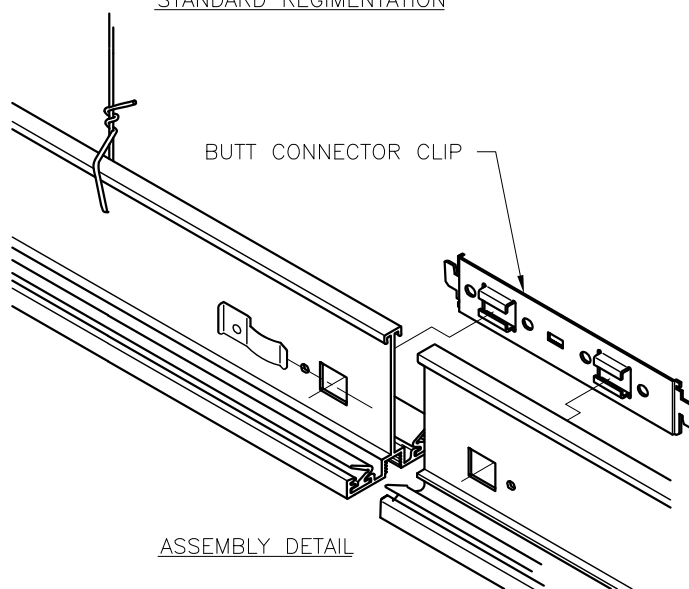
□ PROFILE 4726

.188 DIA  
HANGER HOLE

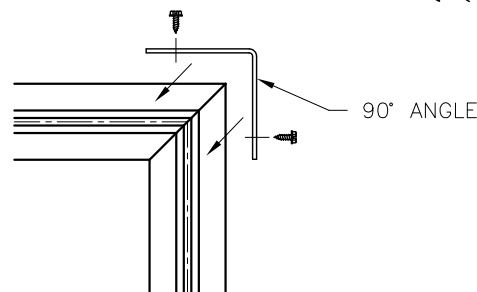


STANDARD REGIMENTATION

LEFT END CONDITION	RIGHT END CONDITION
<p>□ BUTT END</p>	<p>BUTT END □</p>
<p>□ MITRE R</p>	<p>MITRE L □</p>
<p>□ MITRE L</p>	<p>MITRE R □</p>



ASSEMBLY DETAIL



MITRE ASSEMBLY

**MATERIAL:**

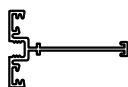
- EXTRUDED ALUMINUM

**FINISH:**

- B12 WHITE POWDER COAT

**NOTES:**

- c/w BUTT CONNECTOR CLIPS IF REQUIRED
- MITRES ARE 45° UNLESS OTHERWISE SPECIFIED
- c/w 90° ANGLE UNLESS OTHERWISE SPECIFIED
- REGIMENTATION AT  O/C



NOMINAL LENGTH =

ALL METRIC DIMENSIONS ( ) ARE SOFT CONVERTED. IMPERIAL DIMENSIONS ARE CONVERTED TO METRIC AND ROUNDED TO THE NEAREST MILLIMETER.

**PROJECT:**

**ENGINEER:**

**CUSTOMER:**

**SUBMITTAL DATE:**

**SPEC. SYMBOL:**

**PRICE®**

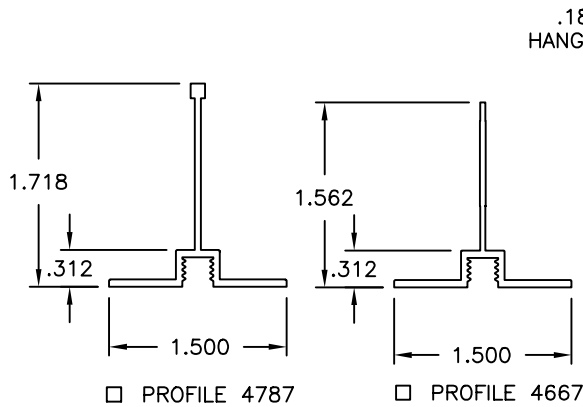
*RV*

230592

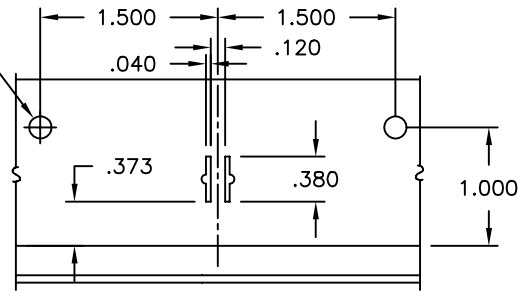
2010/11/29

**UNITEE CR**

4726  
PERIMETER TEE

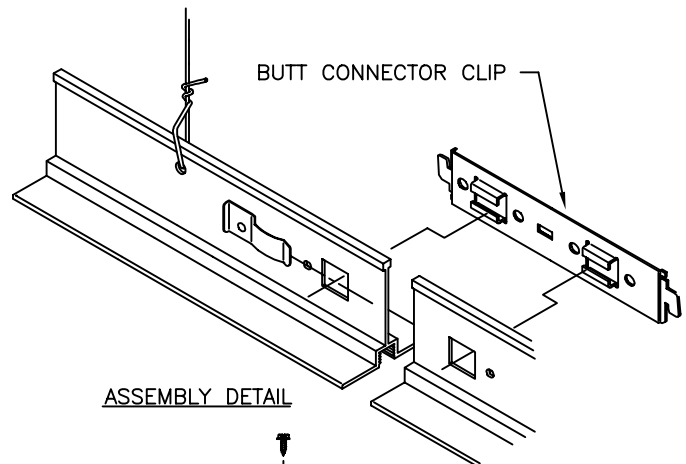


.188 DIA  
HANGER HOLE

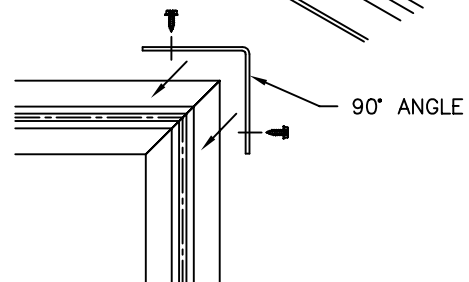


STANDARD REGIMENTATION DETAIL

LEFT END CONDITION	RIGHT END CONDITION
<p>□ BUTT END</p>	<p>BUTT END □</p>
<p>□ MITRE R</p>	<p>MITRE L □</p>
<p>□ MITRE L</p>	<p>MITRE R □</p>



ASSEMBLY DETAIL



MITRE ASSEMBLY

**MATERIAL:**

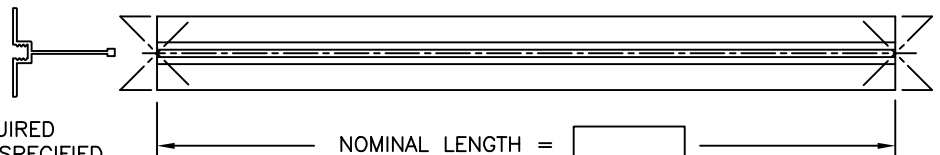
- EXTRUDED ALUMINUM

**FINISH:**


- B12 WHITE

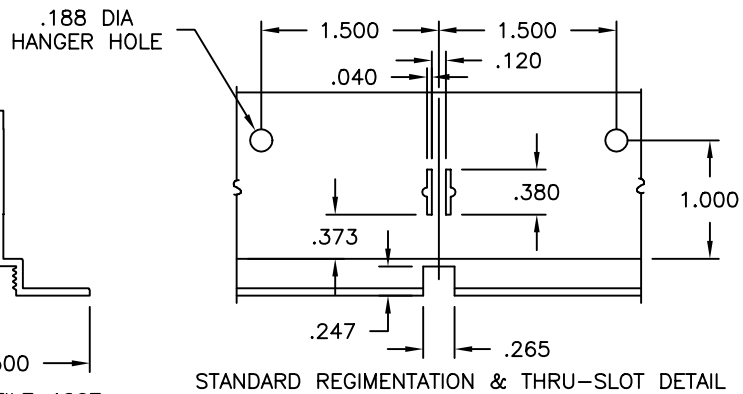
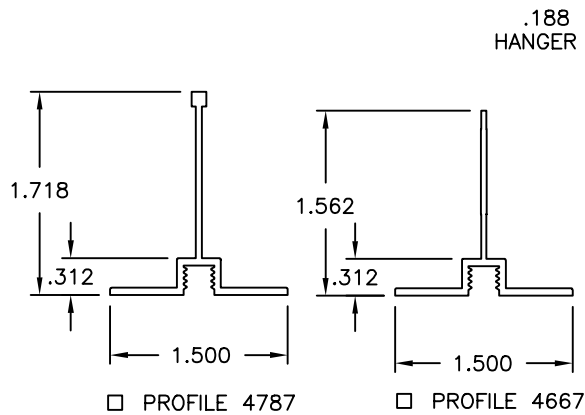
**NOTES:**

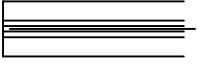
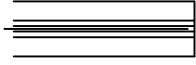
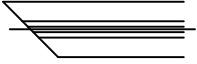
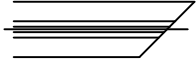
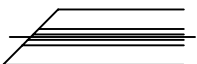
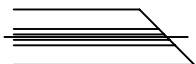


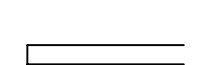
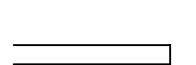
- c/w BUTT CONNECTOR CLIPS IF REQUIRED
- MITRES ARE 45° UNLESS OTHERWISE SPECIFIED
- c/w 90° ANGLE UNLESS OTHERWISE SPECIFIED
- REGIMENTATION AT  O/C

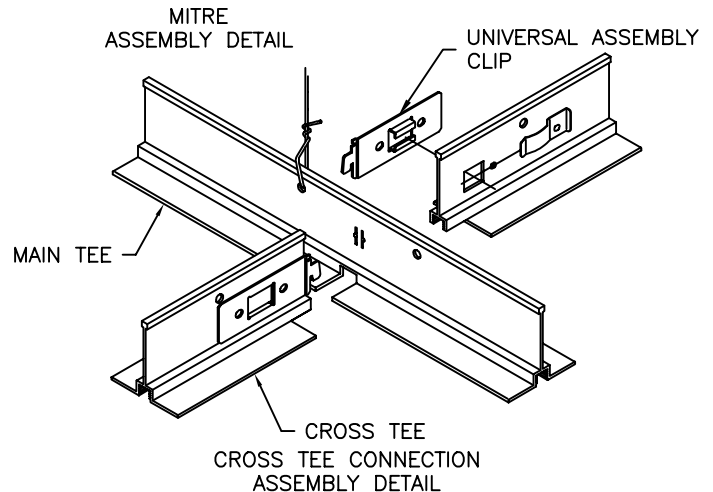
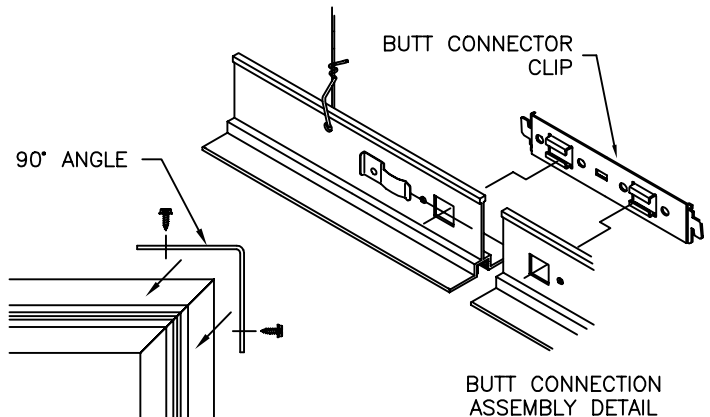


ALL METRIC DIMENSIONS ( ) ARE SOFT CONVERTED. IMPERIAL DIMENSIONS ARE CONVERTED TO METRIC AND ROUNDED TO THE NEAREST MILLIMETER.

<b>PROJECT:</b>		<b>PRICE®</b>	
<b>ENGINEER:</b>		 230594 DEC 1999	<b>UNITEE</b> 4667 / 4787 PERIMETER TEE
<b>CUSTOMER:</b>			
<b>SUBMITTAL DATE:</b>	<b>SPEC. SYMBOL:</b>		



LEFT END CONDITION	RIGHT END CONDITION
 □ BUTT END	 BUTT END □
 □ MITRE R	 MITRE L □
 □ MITRE L	 MITRE R □
 □ STANDARD L	 STANDARD R □
 □ SPECIAL L	 SPECIAL R □



**MATERIAL:**

- EXTRUDED ALUMINUM

**FINISH:**

- B12 WHITE

**NOTES:**

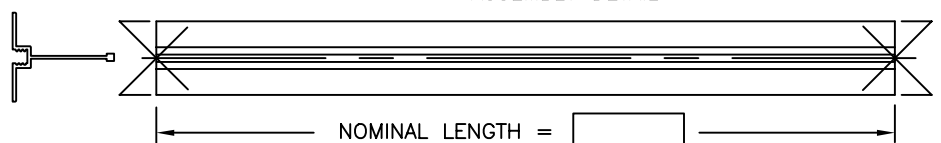
- REGIMENTATION AT  O/C

- THROUGH SLOTS AT  O/C


- c/w UNIVERSAL ASSEMBLY CLIPS

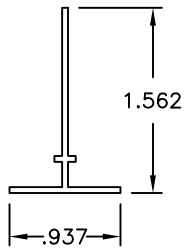
- c/w 90° ANGLE

- c/w BUTT CONNECTOR CLIP

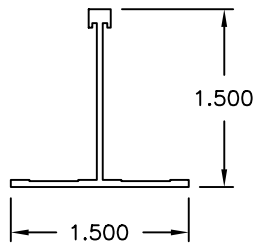


ALL METRIC DIMENSIONS ( ) ARE SOFT CONVERTED. IMPERIAL DIMENSIONS ARE CONVERTED TO METRIC AND ROUNDED TO THE NEAREST MILLIMETER.

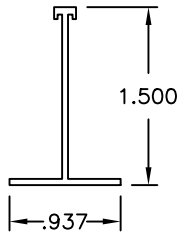
<b>PROJECT:</b>		<b>price®</b>	
<b>ENGINEER:</b>		 230595 DEC 1999	<b>UNITEE</b> 4667 / 4787 CUSTOM TEE
<b>CUSTOMER:</b>			
<b>SUBMITTAL DATE:</b>	<b>SPEC. SYMBOL:</b>		



☐ PROFILE 4683



☐ PROFILE 4818



☐ PROFILE 4823

LEFT END CONDITION	RIGHT END CONDITION
<input type="checkbox"/> BUTT END	BUTT END <input type="checkbox"/>
<input type="checkbox"/> MITRE R	MITRE L <input type="checkbox"/>
<input type="checkbox"/> MITRE L	MITRE R <input type="checkbox"/>
<input type="checkbox"/> STANDARD L	STANDARD R <input type="checkbox"/>
<input type="checkbox"/> SPECIAL L	SPECIAL R <input type="checkbox"/>

**MATERIAL:**

- EXTRUDED ALUMINUM

**FINISH:**

- B12 WHITE

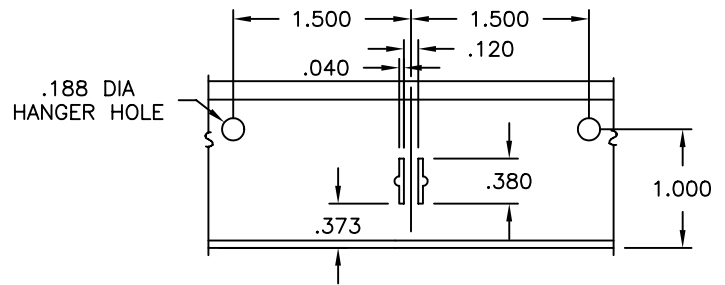
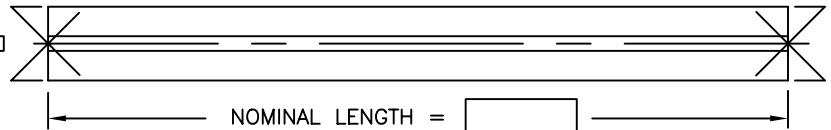
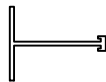
**NOTES:**

- REGIMENTATION AT  O/C

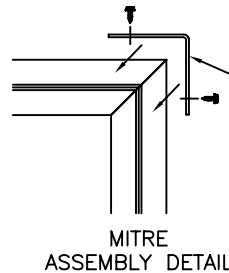
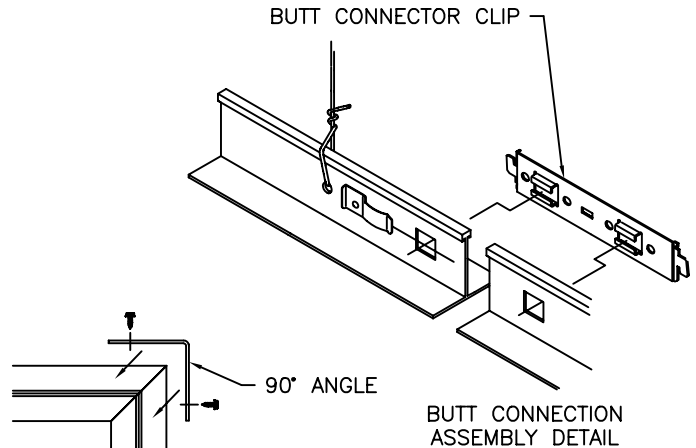
- ☐ c/w UNIVERSAL ASSEMBLY CLIPS

- ☐ c/w 90° ANGLE

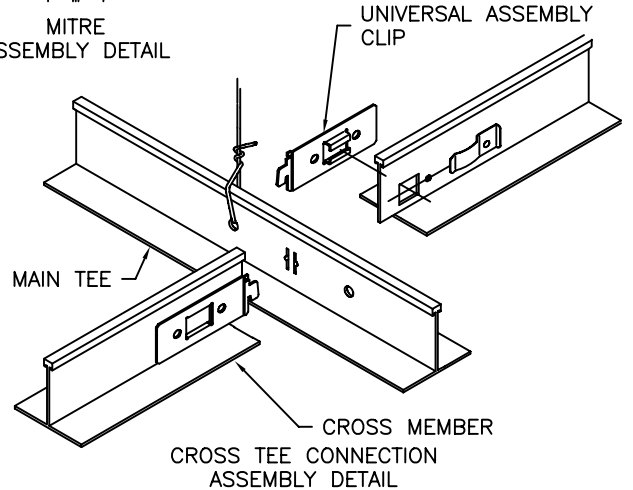
- ☐ c/w BUTT CONNECTOR CLIP



STANDARD REGIMENTATION

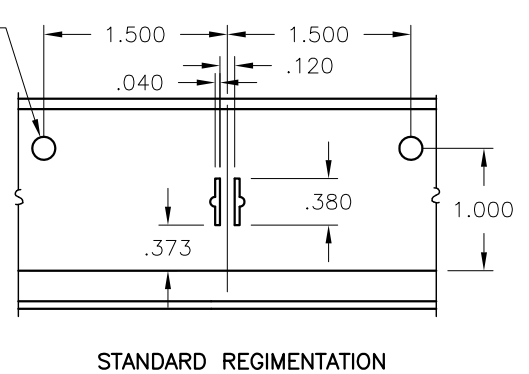
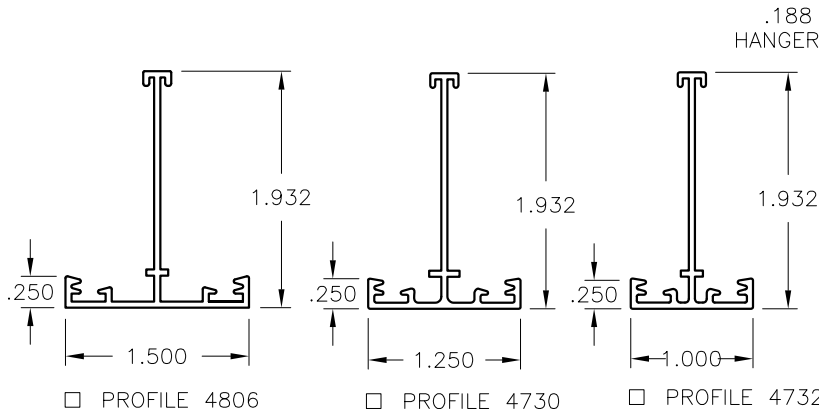


MITRE ASSEMBLY DETAIL



ALL METRIC DIMENSIONS ( ) ARE SOFT CONVERTED. IMPERIAL DIMENSIONS ARE CONVERTED TO METRIC AND ROUNDED TO THE NEAREST MILLIMETER.

<b>PROJECT:</b>		<b>price®</b>	
<b>ENGINEER:</b>		<b>B6</b>	<b>UNITEE</b> 4683, 4823, 4818 CUSTOM TEE
<b>CUSTOMER:</b>			
<b>SUBMITTAL DATE:</b>			
<b>SPEC. SYMBOL:</b>		230596	JULY 2004



LEFT END CONDITION	RIGHT END CONDITION
<input type="checkbox"/> BUTT END	<input type="checkbox"/> BUTT END
<input type="checkbox"/> MITRE R	<input type="checkbox"/> MITRE L
<input type="checkbox"/> MITRE L	<input type="checkbox"/> MITRE R
<input type="checkbox"/> STANDARD L	<input type="checkbox"/> STANDARD R
<input type="checkbox"/> SPECIAL L	<input type="checkbox"/> SPECIAL R

**MATERIAL:**

- EXTRUDED ALUMINUM

**FINISH:**

- B12 WHITE POWDER COAT

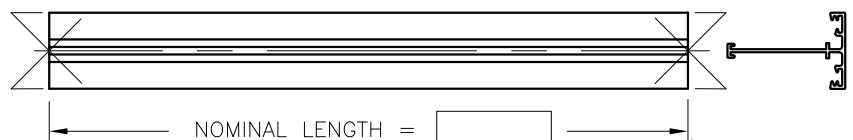
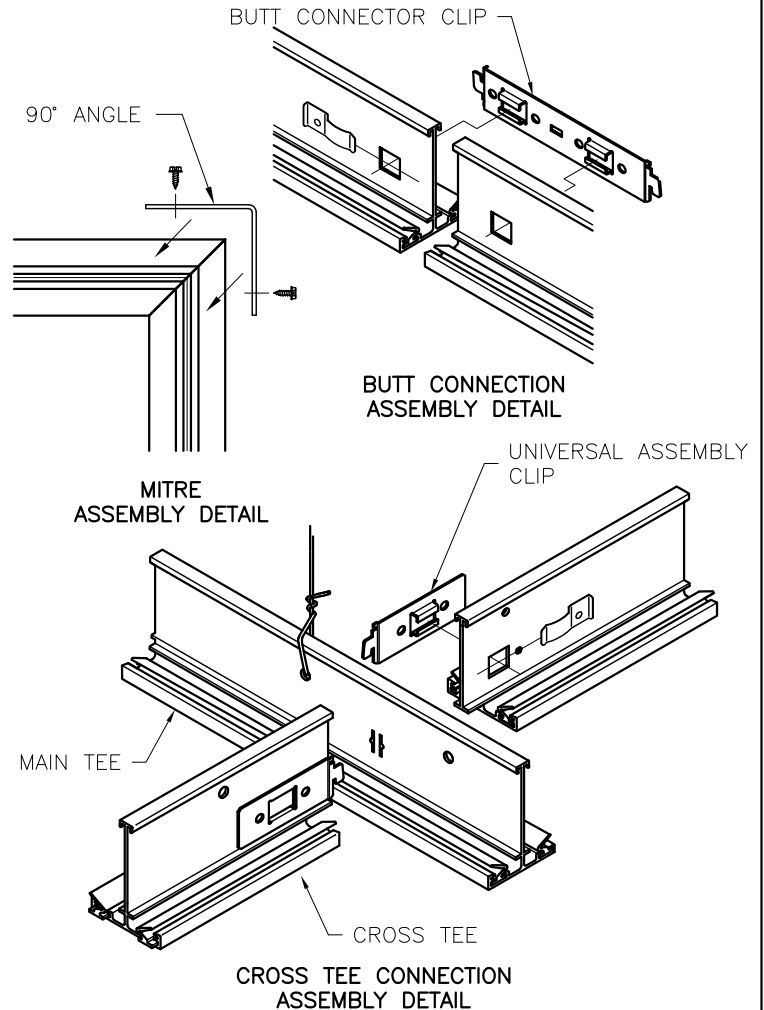
**NOTES:**

- REGIMENTATION AT  O/C

☐ c/w UNIVERSAL ASSEMBLY CLIPS

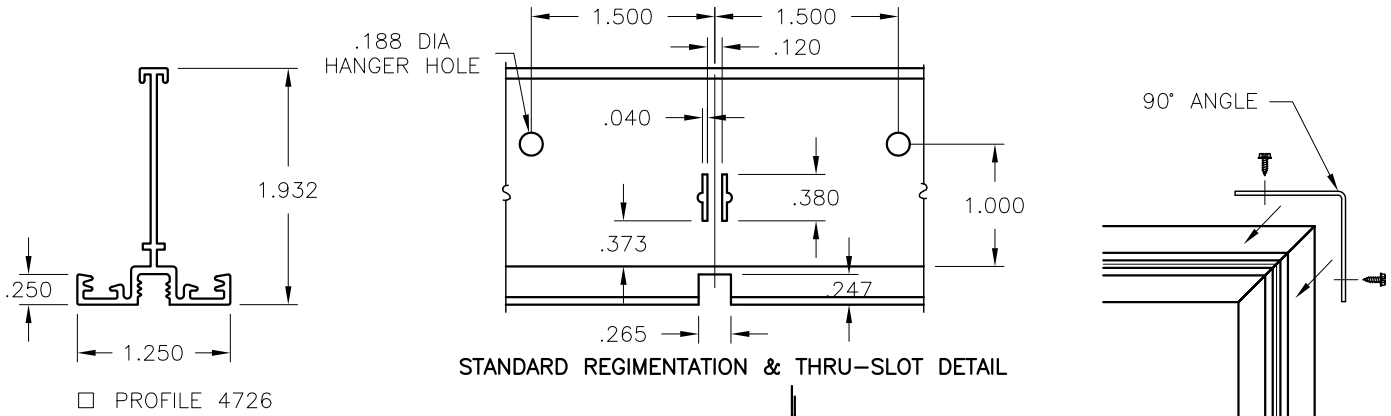
☐ c/w 90° ANGLE

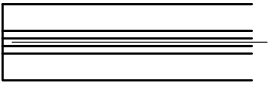
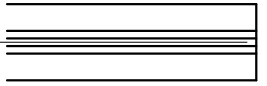
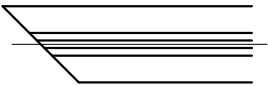
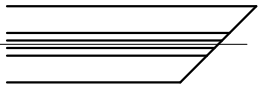
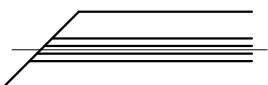
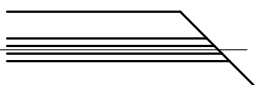
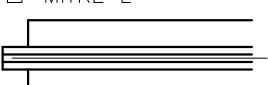
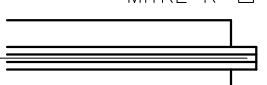


☐ c/w BUTT CONNECTOR CLIP

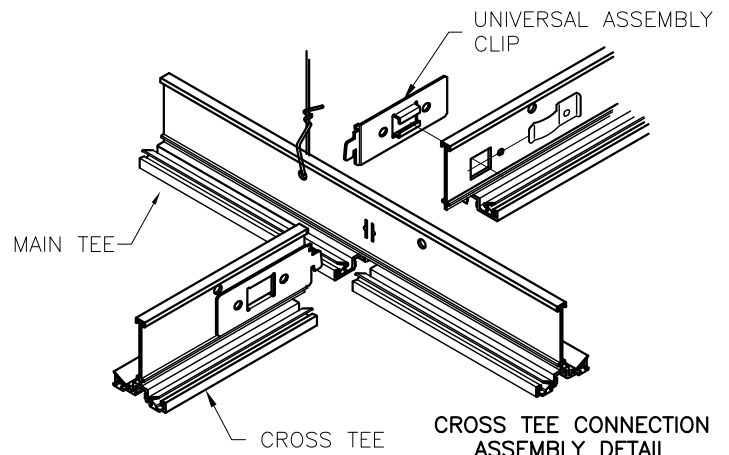
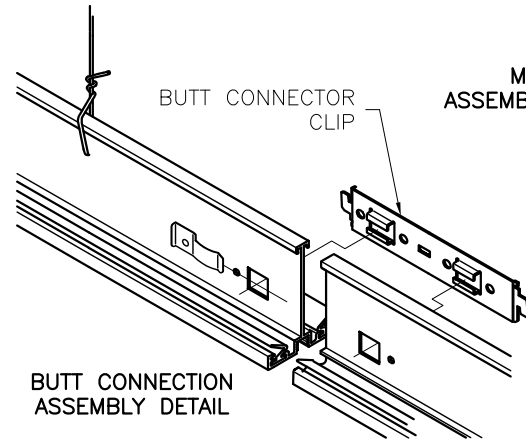


ALL METRIC DIMENSIONS ( ) ARE SOFT CONVERTED. IMPERIAL DIMENSIONS ARE CONVERTED TO METRIC AND ROUNDED TO THE NEAREST MILLIMETER.

<b>PROJECT:</b>		<b>PRICE®</b>	
<b>ENGINEER:</b>			<b>UNITEE CR</b> 4730, 4732, 4806 CUSTOM TEE
<b>CUSTOMER:</b>			
<b>SUBMITTAL DATE:</b>	<b>SPEC. SYMBOL:</b>	230597	
		2010/11/29	



LEFT END CONDITION	RIGHT END CONDITION
	
<input type="checkbox"/> BUTT END	<input type="checkbox"/> BUTT END
	
<input type="checkbox"/> MITRE R	<input type="checkbox"/> MITRE L
	
<input type="checkbox"/> MITRE L	<input type="checkbox"/> MITRE R
	
<input type="checkbox"/> STANDARD L	<input type="checkbox"/> STANDARD R
	
<input type="checkbox"/> SPECIAL L	<input type="checkbox"/> SPECIAL R



**MATERIAL:**

- EXTRUDED ALUMINUM

**FINISH:**


- B12 WHITE POWDER COAT

**NOTES:**

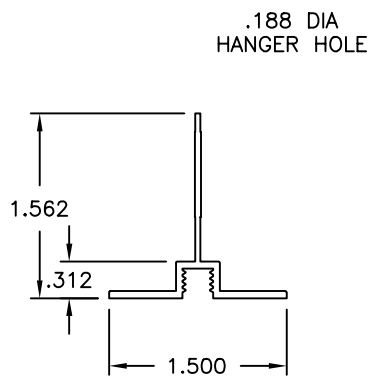
- REGIMENTATION AT  O/C
- THROUGH SLOTS AT  O/C
- ☐ c/w UNIVERSAL ASSEMBLY CLIPS
- ☐ c/w 90° ANGLE
- ☐ c/w BUTT CONNECTOR CLIP



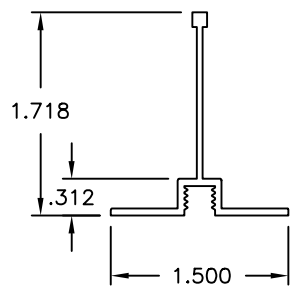
ALL METRIC DIMENSIONS ( ) ARE SOFT CONVERTED. IMPERIAL DIMENSIONS ARE CONVERTED TO METRIC AND ROUNDED TO THE NEAREST MILLIMETER.

<b>PROJECT:</b>		<b>PRICE®</b>	
<b>ENGINEER:</b>			<b>UNITEE CR</b>
<b>CUSTOMER:</b>			
<b>SUBMITTAL DATE:</b>		230598	4726 CUSTOM TEE
<b>SPEC. SYMBOL:</b>		2010/11/29	

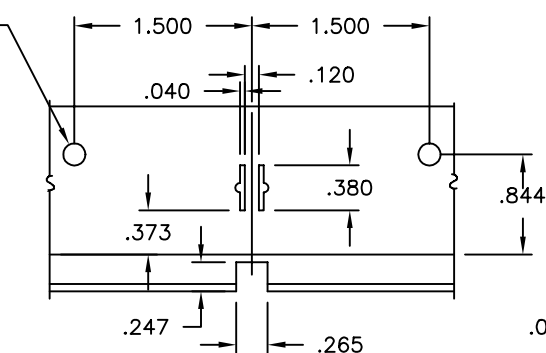




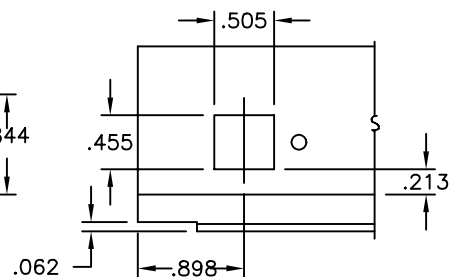
□ PROFILE 4667



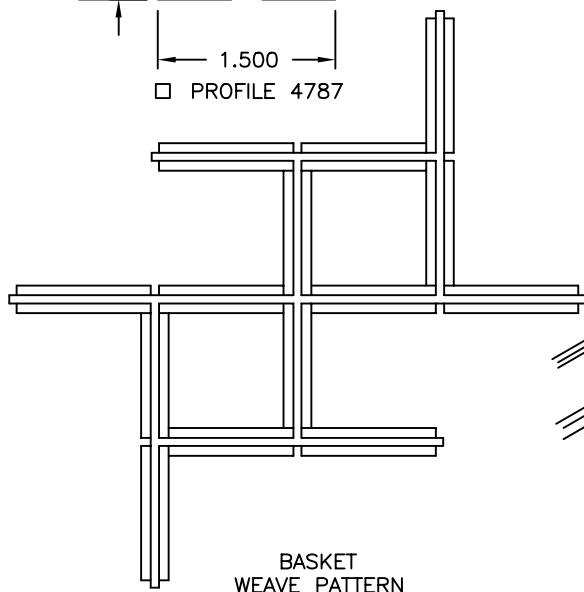
□ PROFILE 4787



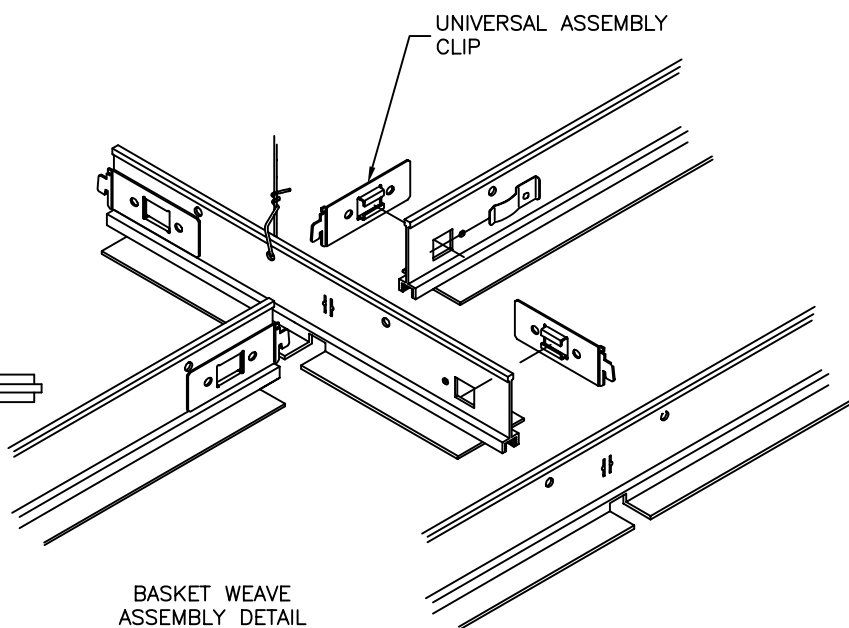
STANDARD REGIMENTATION & THRU-SLOT DETAIL



STANDARD END DETAIL



BASKET WEAVE PATTERN



BASKET WEAVE ASSEMBLY DETAIL

**MATERIAL:**

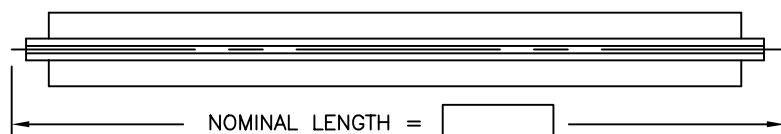
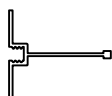
- EXTRUDED ALUMINUM

**FINISH:**


- B12 WHITE

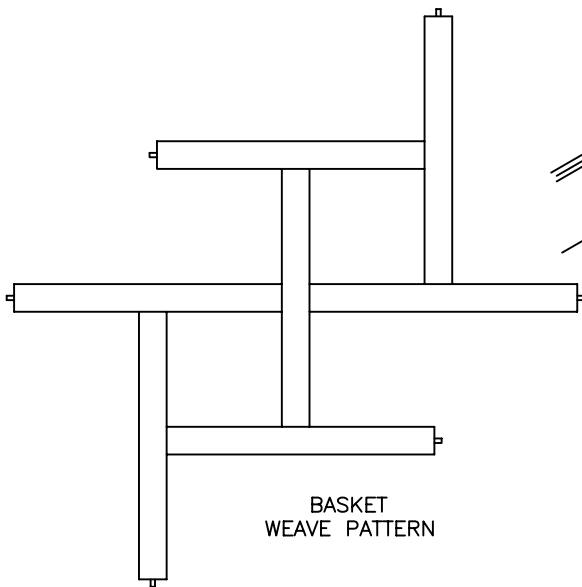
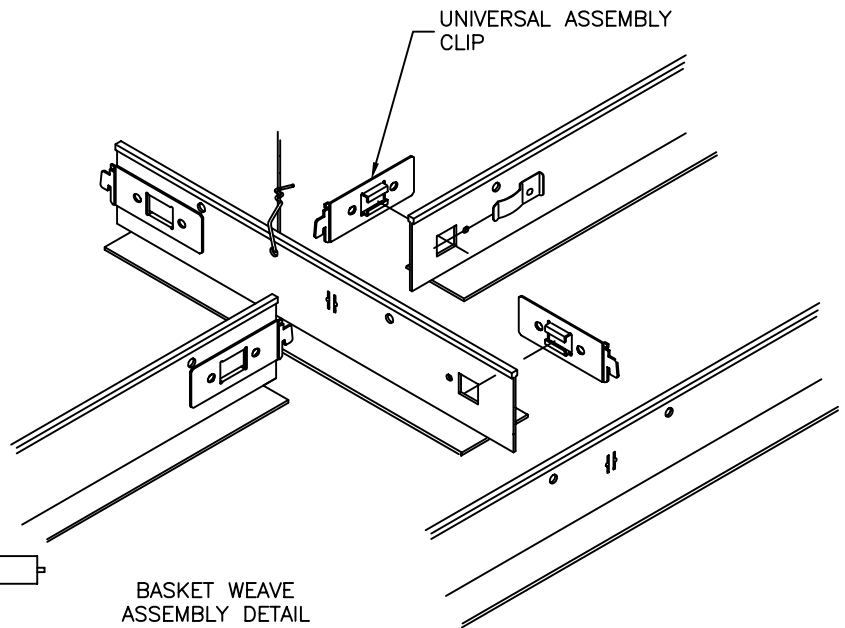
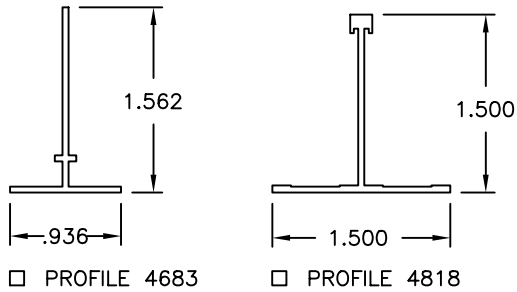
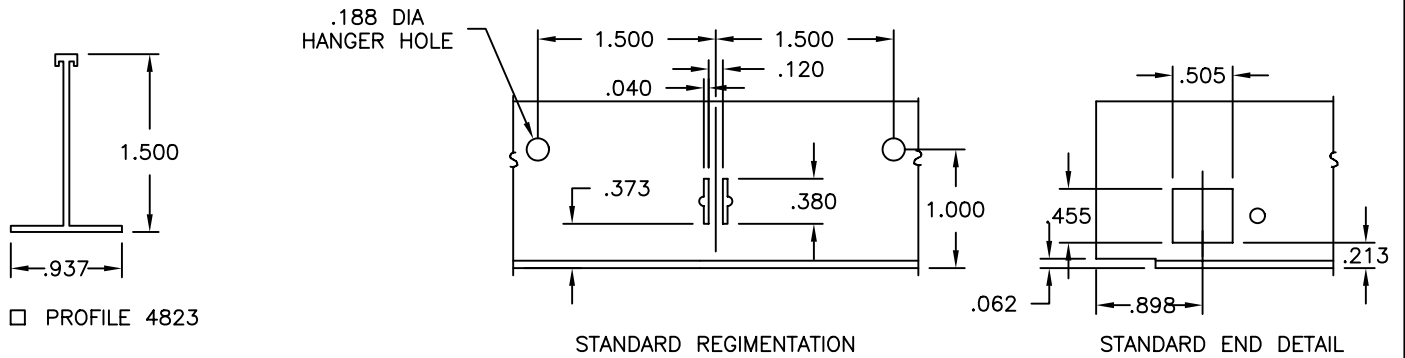
**NOTES:**

- REGIMENTATION AT  O/C
- THROUGH SLOTS AT  O/C
- c/w UNIVERSAL ASSEMBLY CLIPS



ALL METRIC DIMENSIONS ( ) ARE SOFT CONVERTED. IMPERIAL DIMENSIONS ARE CONVERTED TO METRIC AND ROUNDED TO THE NEAREST MILLIMETER.

<b>PROJECT:</b>		<b>PRICE®</b>	
<b>ENGINEER:</b>		 230599 DEC. 1999	<b>UNITEE</b> 4667 / 4787 BASKET WEAVE
<b>CUSTOMER:</b>			
<b>SUBMITTAL DATE:</b>	<b>SPEC. SYMBOL:</b>		



**MATERIAL:**

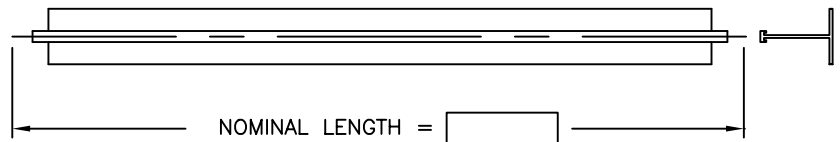
- EXTRUDED ALUMINUM

**FINISH:**

- B12 WHITE

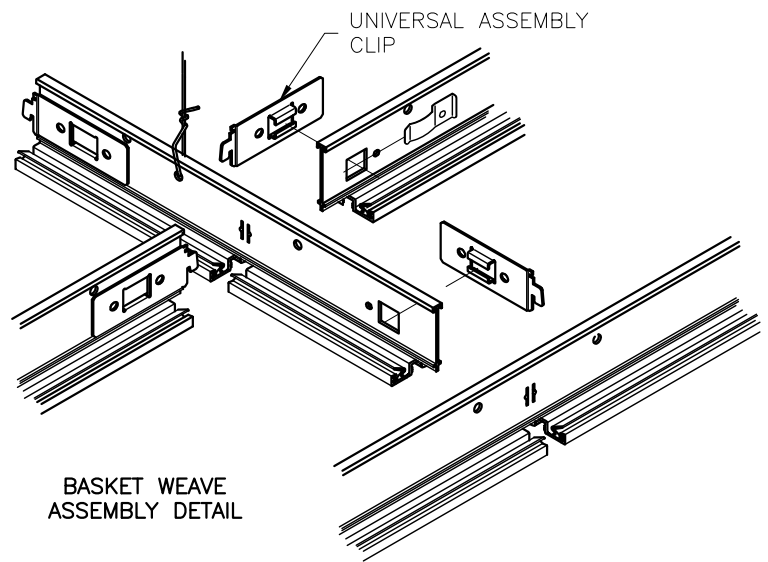
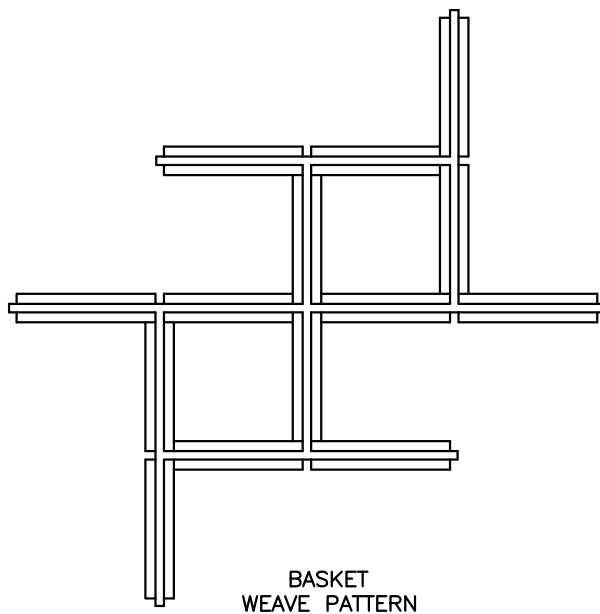
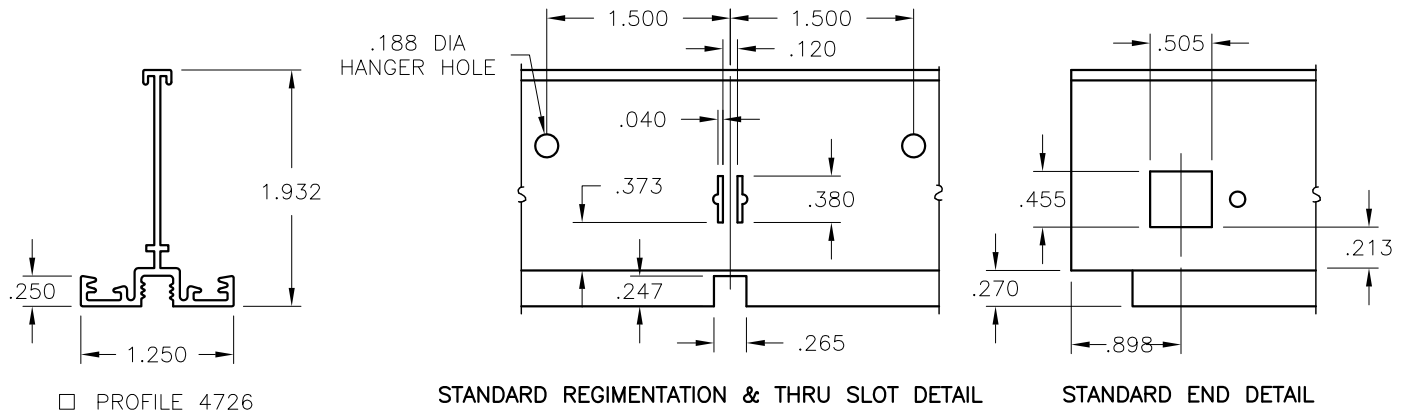
**NOTES:**

- REGIMENTATION AT  O/C
- c/w UNIVERSAL ASSEMBLY CLIPS



ALL METRIC DIMENSIONS ( ) ARE SOFT CONVERTED. IMPERIAL DIMENSIONS ARE CONVERTED TO METRIC AND ROUNDED TO THE NEAREST MILLIMETER.

<b>PROJECT:</b>		<b>price®</b>	
<b>ENGINEER:</b>		<b>B6</b>	<b>UNITEE</b> 4683/4823/4818 BASKET WEAVE
<b>CUSTOMER:</b>		230600	
<b>SUBMITTAL DATE:</b>	<b>SPEC. SYMBOL:</b>	JULY 2004	



**MATERIAL:**

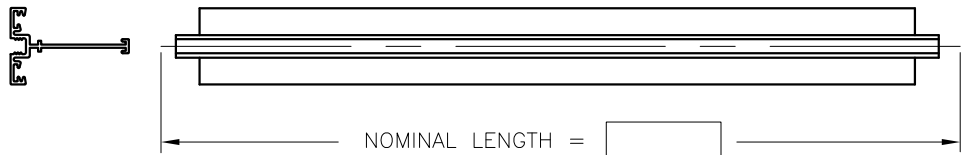
- EXTRUDED ALUMINUM

**FINISH:**


- B12 WHITE POWDER COAT

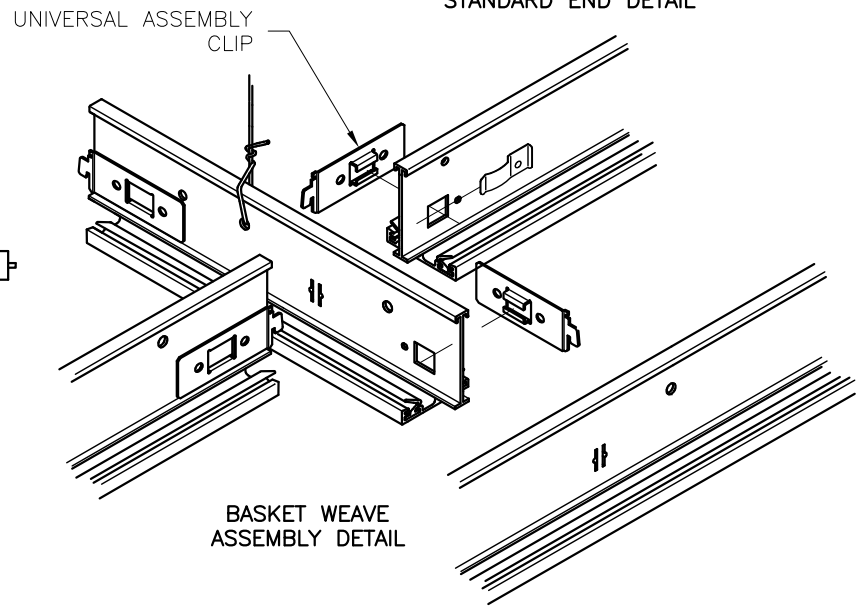
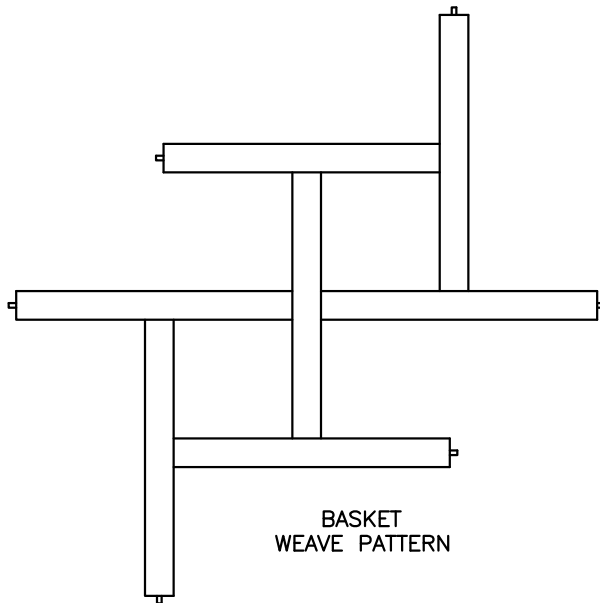
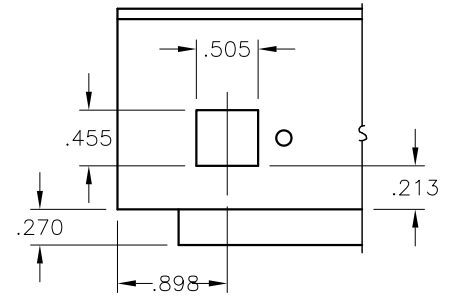
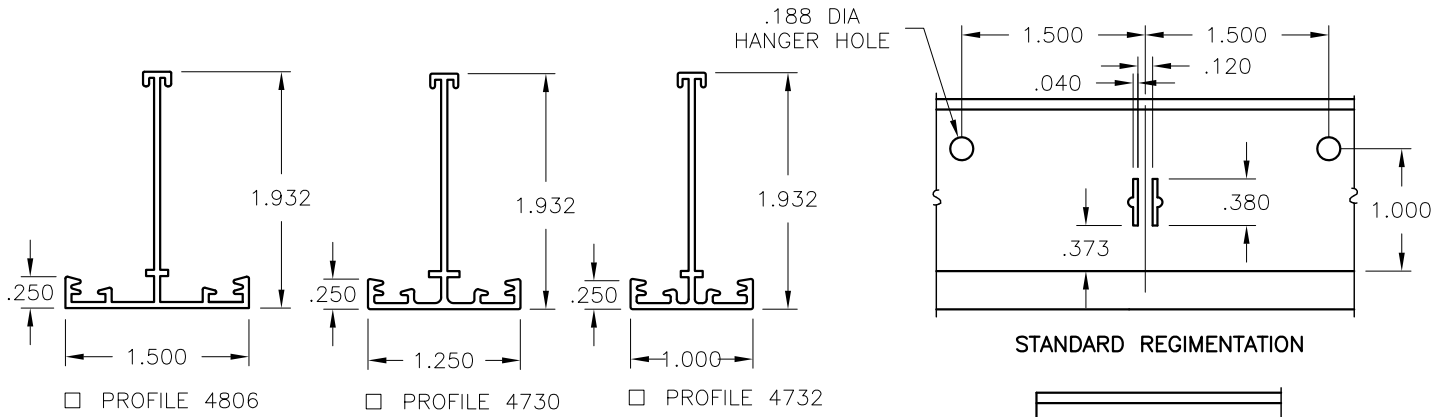
**NOTES:**

- REGIMENTATION AT  O/C
- THROUGH SLOTS AT  O/C
- c/w UNIVERSAL ASSEMBLY CLIPS



ALL METRIC DIMENSIONS ( ) ARE SOFT CONVERTED. IMPERIAL DIMENSIONS ARE CONVERTED TO METRIC AND ROUNDED TO THE NEAREST MILLIMETER.

<b>PROJECT:</b>		<b>PRICE®</b>	
<b>ENGINEER:</b>			<b>UNITEE CR</b> 4726 BASKET WEAVE
<b>CUSTOMER:</b>			
<b>SUBMITTAL DATE:</b>			
<b>SPEC. SYMBOL:</b>		230601	
		2010/11/29	



**MATERIAL:**

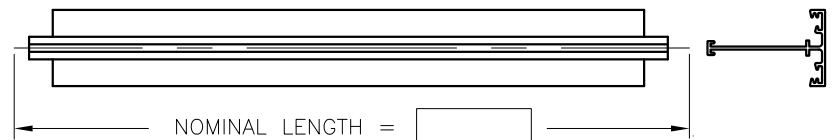
- EXTRUDED ALUMINUM

**FINISH:**


- B12 WHITE POWDER COAT

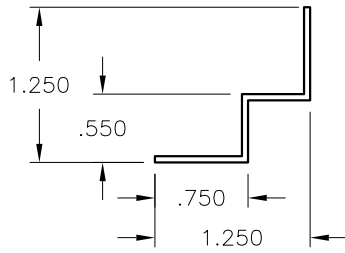
**NOTES:**

- REGIMENTATION AT  O/C
- c/w UNIVERSAL ASSEMBLY CLIPS

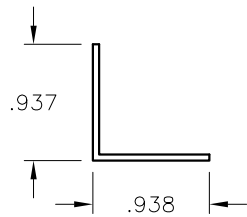


ALL METRIC DIMENSIONS ( ) ARE SOFT CONVERTED. IMPERIAL DIMENSIONS ARE CONVERTED TO METRIC AND ROUNDED TO THE NEAREST MILLIMETER.

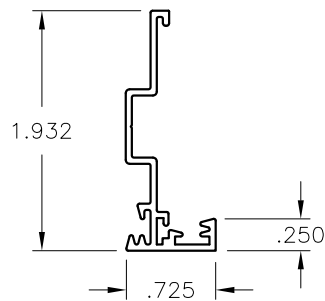
<b>PROJECT:</b>		<b>price®</b>	
<b>ENGINEER:</b>			<b>UNITEE CR</b> 4730/4732/4806 BASKET WEAVE
<b>CUSTOMER:</b>			
<b>SUBMITTAL DATE:</b>	<b>SPEC. SYMBOL:</b>		
		230602	
		2010/11/29	



□ PROFILE 4805  
UNITEE

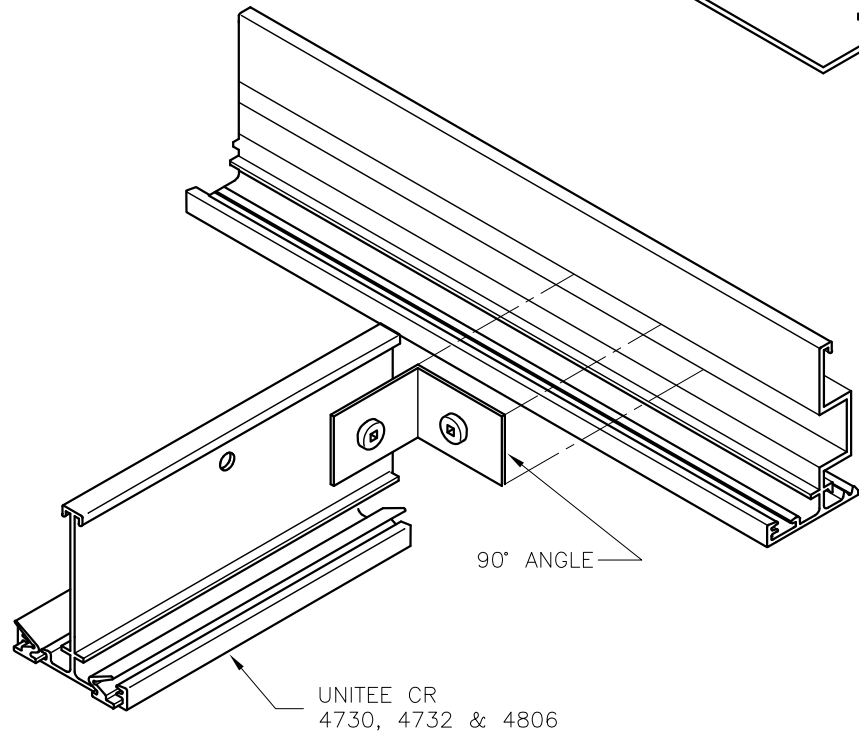
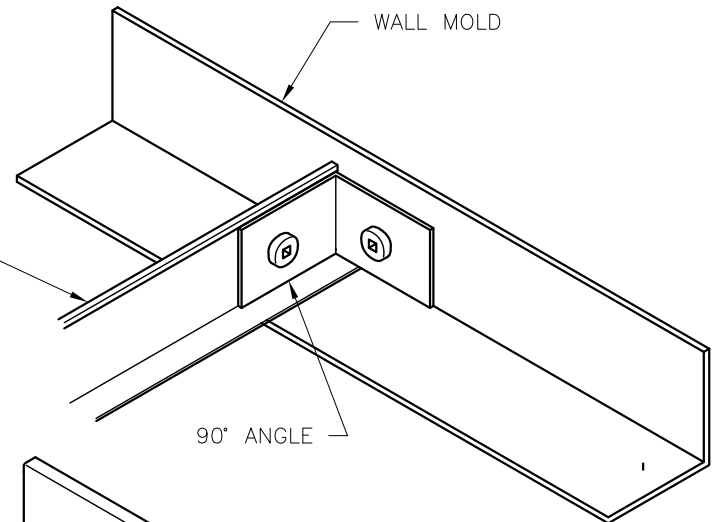


□ PROFILE 4826  
UNITEE



□ PROFILE 4733  
UNITEE CR

REFERENCE OF TEE  
SUPPLIED BY OTHERS



**MATERIAL:**

- EXTRUDED ALUMINUM


**FINISH:**

- B12 WHITE POWDER COAT

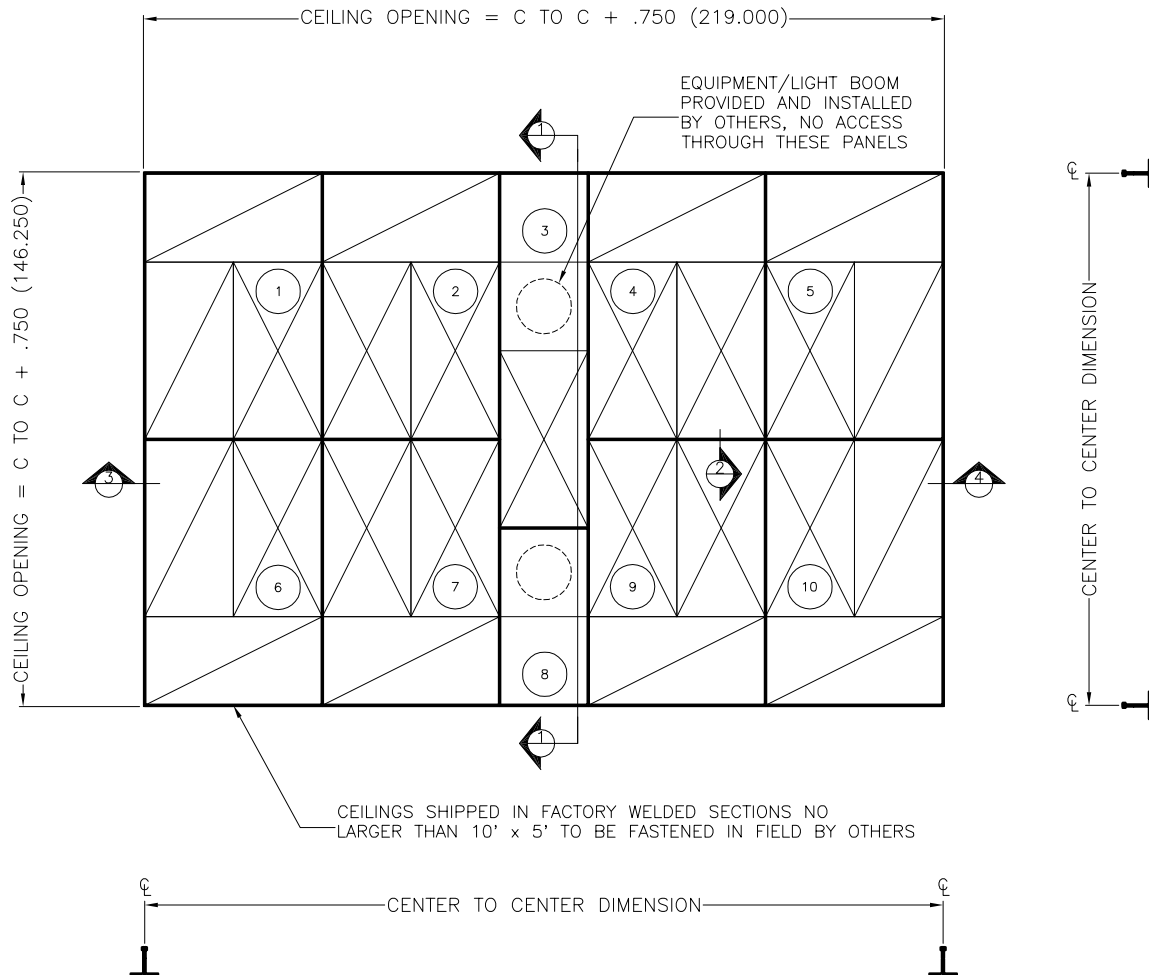
**NOTES:**

- C/W 90° ANGLE

ALL METRIC DIMENSIONS ( ) ARE SOFT CONVERTED. IMPERIAL DIMENSIONS ARE CONVERTED TO METRIC AND ROUNDED TO THE NEAREST MILLIMETER.

<b>PROJECT:</b>		<b>price®</b>		
<b>ENGINEER:</b>			<b>UNITEE (CR)</b> 4805/4826 4733 WALL MOLD	
<b>CUSTOMER:</b>				230603
<b>SUBMITTAL DATE:</b>	<b>SPEC. SYMBOL:</b>			2010/11/29

**HEAVY DUTY WELDED CEILING SYSTEM  
SAMPLE REFLECTED CEILING PLAN**



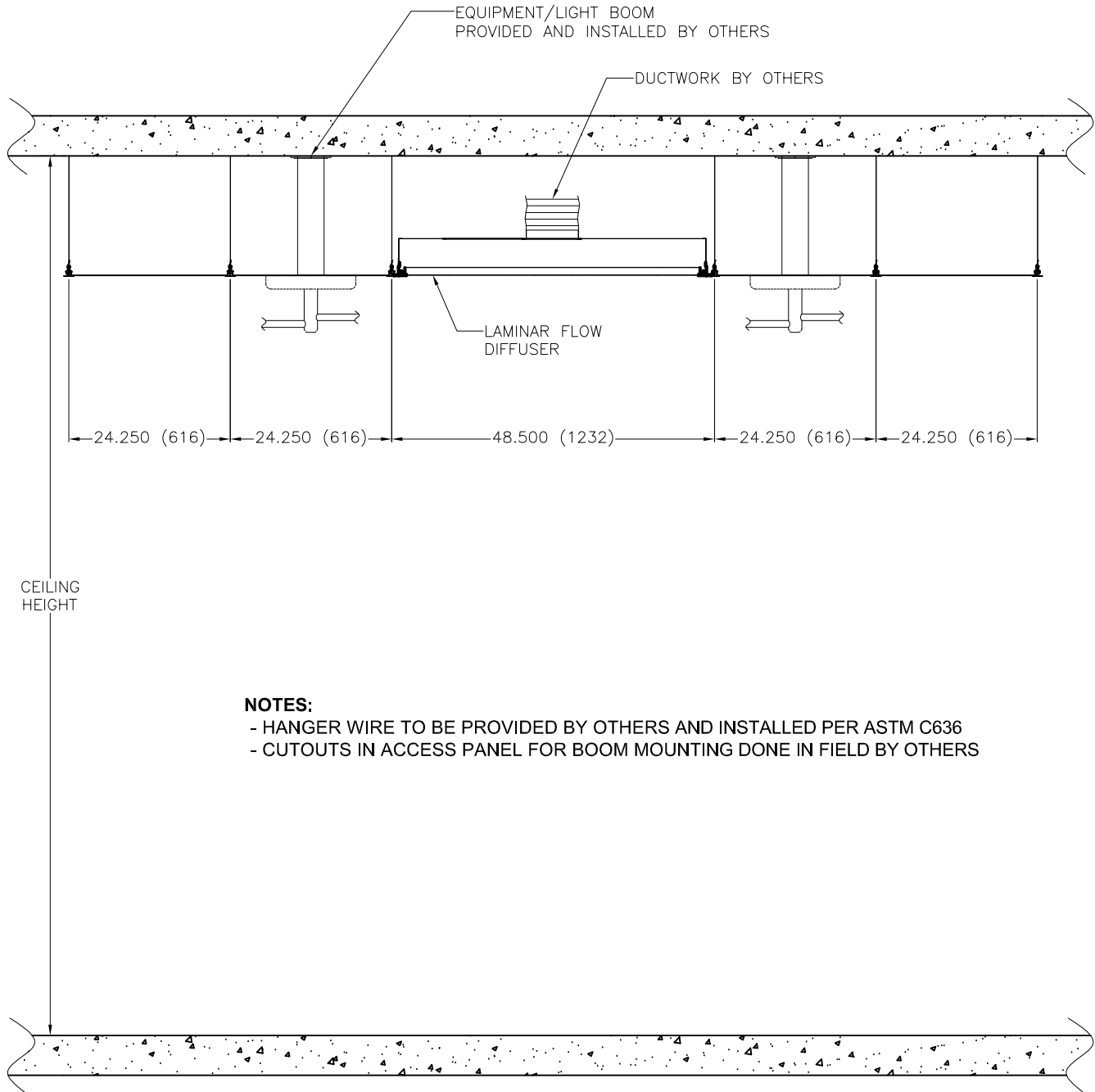
HDCR AREA = 221 sq. ft.		
<input checked="" type="checkbox"/> <b>DIFFUSER</b> 48 x 24 (x 13)	<input checked="" type="checkbox"/> <b>LIGHT FIXTURES BY OTHERS</b> 48 x 24 (x 12)	<input type="checkbox"/> <b>ACCESS PANELS</b> 24 x 24 (x 4)

- FINISH OPTIONS:
  - B12 POWDER COAT WHITE
  - AC ANODIZED CLEAR
- PANEL CUTOUTS FOR BOOMS DONE IN FIELD BY OTHERS
- THE CEILING IS FACTORY PREMANUFACTURED TO SIZES AND TOLERANCE +/- .032"
- SITE ADJUSTMENTS TO PERIMETER SOFFITS AND/OR DRYWALL MAY BE REQUIRED AND ARE THE RESPONSIBILITY OF THE INSTALLER

ALL METRIC DIMENSIONS ( ) ARE SOFT CONVERTED. IMPERIAL DIMENSIONS ARE CONVERTED TO METRIC AND ROUNDED TO THE NEAREST MILLIMETER.

<b>PROJECT:</b>		<b>price®</b>	
<b>ENGINEER:</b>		<b>DK</b>	<b>HDCR</b> HEAVY DUTY WELDED CEILING SYSTEM
<b>CUSTOMER:</b>		261082	
<b>SUBMITTAL DATE:</b>	<b>REVISION: C</b>	06/04/2015	

**HDCR SECTION VIEW**



**NOTES:**

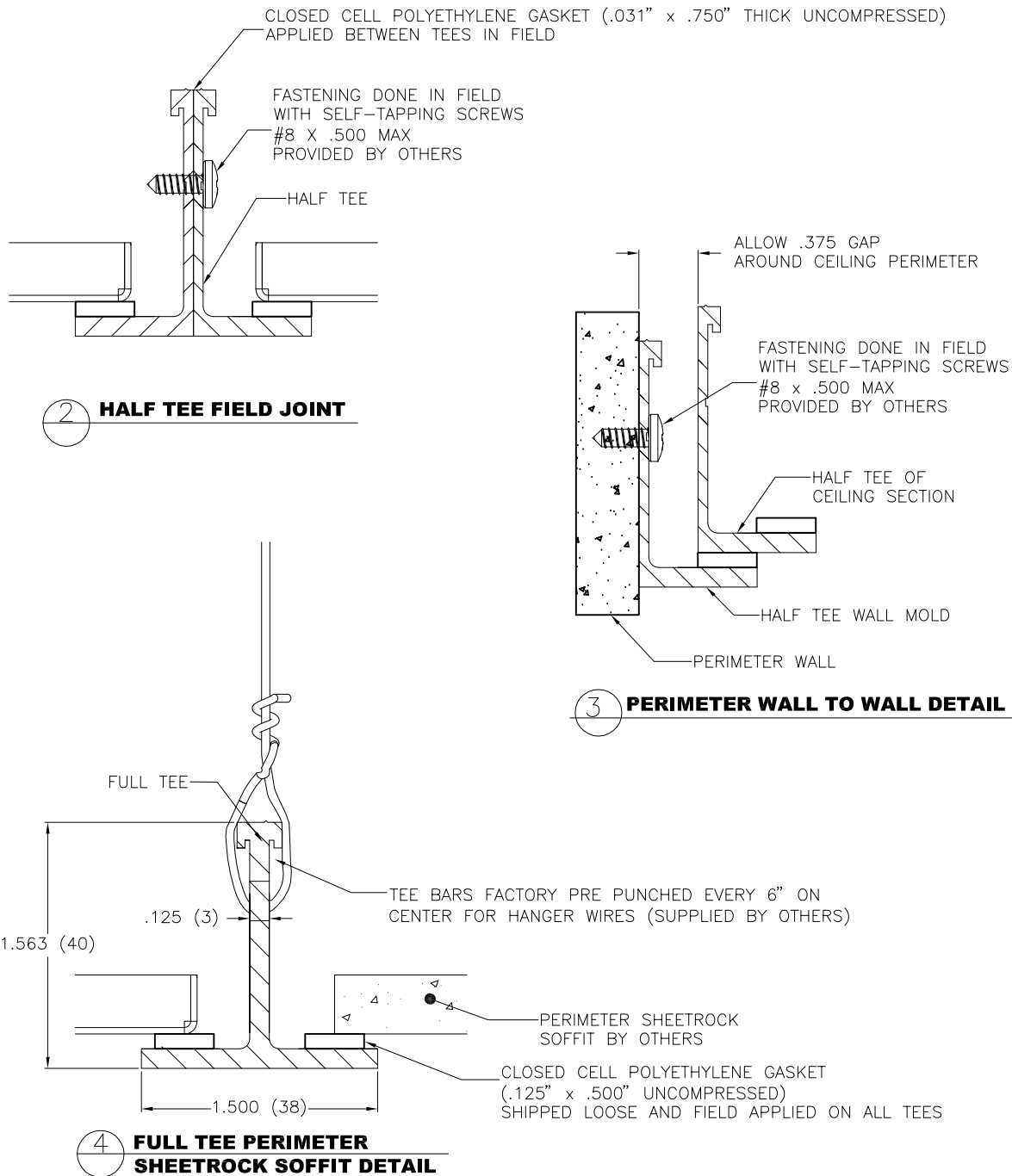
- HANGER WIRE TO BE PROVIDED BY OTHERS AND INSTALLED PER ASTM C636
- CUTOUTS IN ACCESS PANEL FOR BOOM MOUNTING DONE IN FIELD BY OTHERS

**1 CEILING CROSS SECTION**

ALL METRIC DIMENSIONS ( ) ARE SOFT CONVERTED. IMPERIAL DIMENSIONS ARE CONVERTED TO METRIC AND ROUNDED TO THE NEAREST MILLIMETER.

<b>PROJECT:</b>		<b>PRICE®</b>	
<b>ENGINEER:</b>		<b>DK</b>	<b>HDCR</b> HEAVY DUTY WELDED CEILING SYSTEM
<b>CUSTOMER:</b>		261082	
<b>SUBMITTAL DATE:</b>	<b>REVISION: C</b>	06/04/2015	

**HDCR SECTION VIEWS**

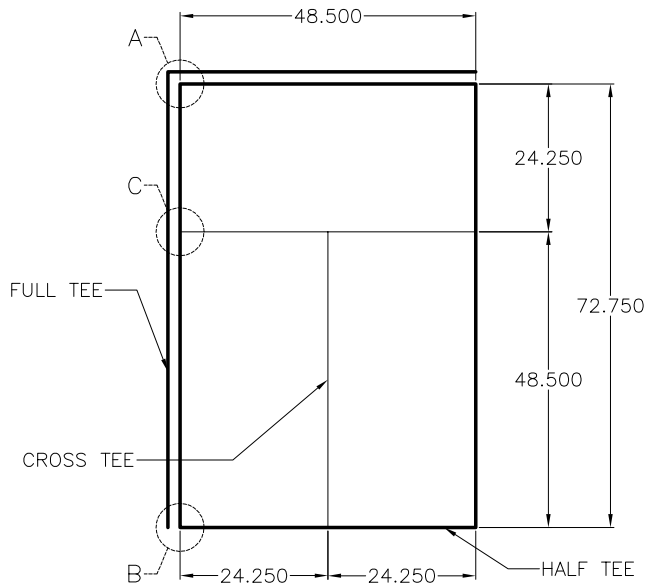


ALL METRIC DIMENSIONS ( ) ARE SOFT CONVERTED. IMPERIAL DIMENSIONS ARE CONVERTED TO METRIC AND ROUNDED TO THE NEAREST MILLIMETER.

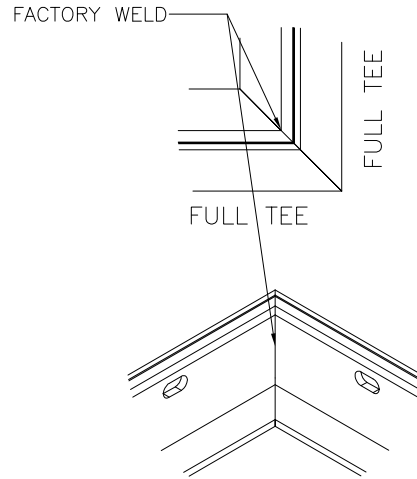
<b>PROJECT:</b>		<b>PRICE®</b>	
		<b>DK</b>	<b>HDCR</b> HEAVY DUTY WELDED CEILING SYSTEM
		261082	
<b>ENGINEER:</b>		06/04/2015	
<b>CUSTOMER:</b>			
<b>SUBMITTAL DATE:</b>	<b>REVISION: C</b>		



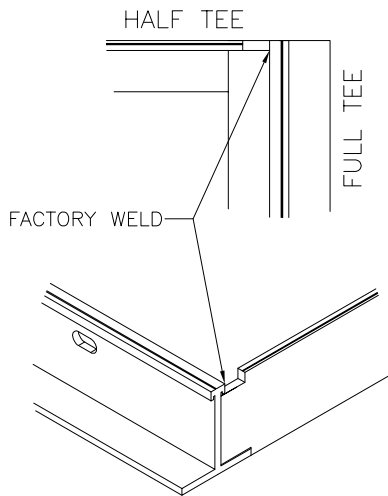
**HDCR MODULE DETAIL**



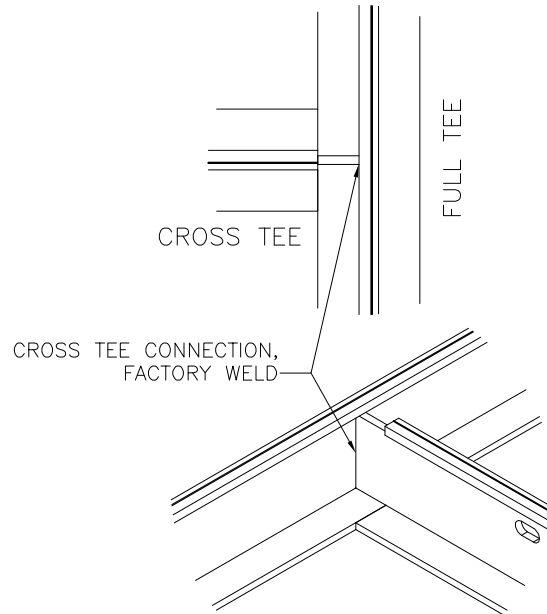
**SECTION 1 - DETAIL VIEW**



**DETAIL A**




**DETAIL B**

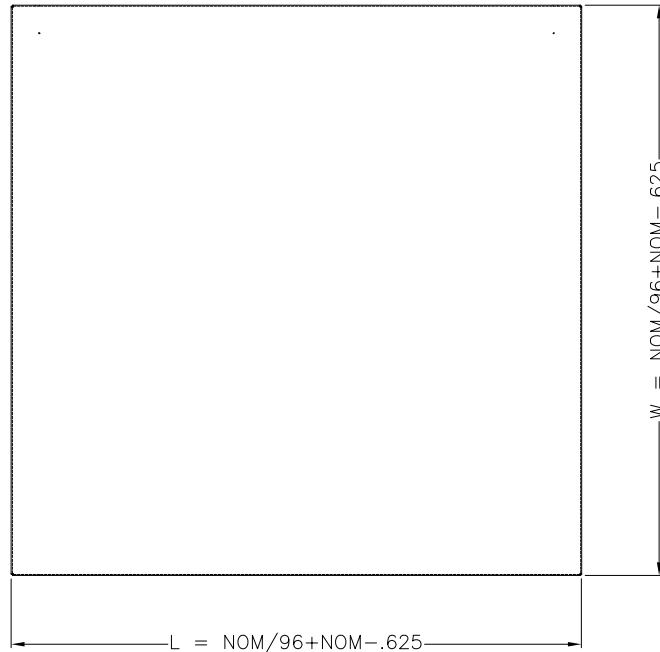


**DETAIL C**

ALL METRIC DIMENSIONS ( ) ARE SOFT CONVERTED. IMPERIAL DIMENSIONS ARE CONVERTED TO METRIC AND ROUNDED TO THE NEAREST MILLIMETER.

<b>PROJECT:</b>			
<b>ENGINEER:</b>		<b>DK</b>	<b>HDCR</b> HEAVY DUTY WELDED CEILING SYSTEM
<b>CUSTOMER:</b>		261082	
<b>SUBMITTAL DATE:</b>	<b>REVISION: C</b>	06/04/2015	

**ACCESS PANEL**  
**SC - SOLID CORE**

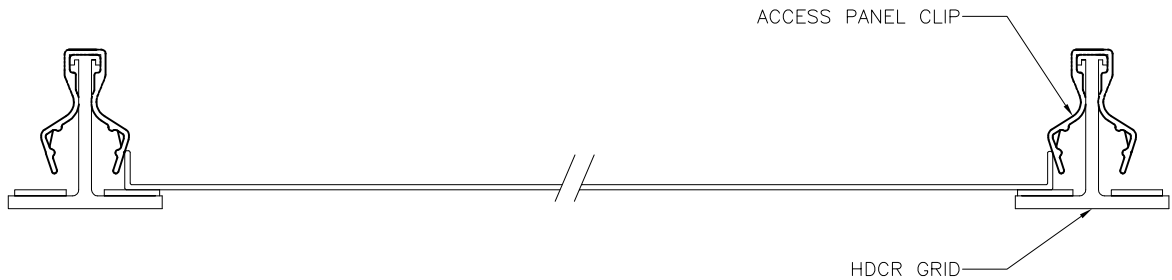


**PANEL MATERIAL / FINISH OPTIONS:**

- B12 POWDER COAT WHITE ALUMINUM
- AC ANODIZED CLEAR ALUMINUM
- #4 STAINLESS STEEL
- B25 CUSTOM FINISH

**NOTES:**

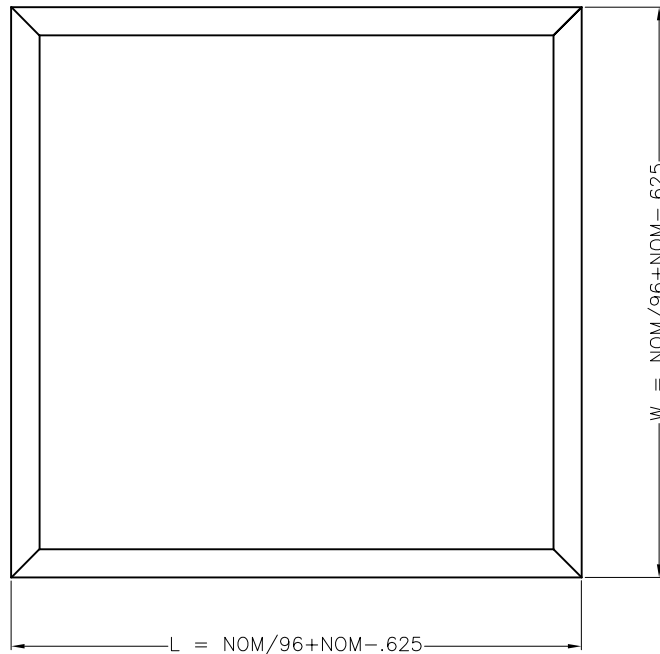
- SOLID CORE, UNPERFORATED
- FACTORY TOLERANCE +/- 1/32 "



ALL METRIC DIMENSIONS ( ) ARE SOFT CONVERTED. IMPERIAL DIMENSIONS ARE CONVERTED TO METRIC AND ROUNDED TO THE NEAREST MILLIMETER.

<b>PROJECT:</b>		<b>PRICE®</b>	
<b>ENGINEER:</b>		<b>DK</b>	<b>HDCR</b> HEAVY DUTY WELDED CEILING SYSTEM
<b>CUSTOMER:</b>		261082	
<b>SUBMITTAL DATE:</b>	<b>REVISION: C</b>	06/04/2015	

**ACCESS PANEL**  
**SCE - SOLID CORE WITH EXTRUDED FRAME**

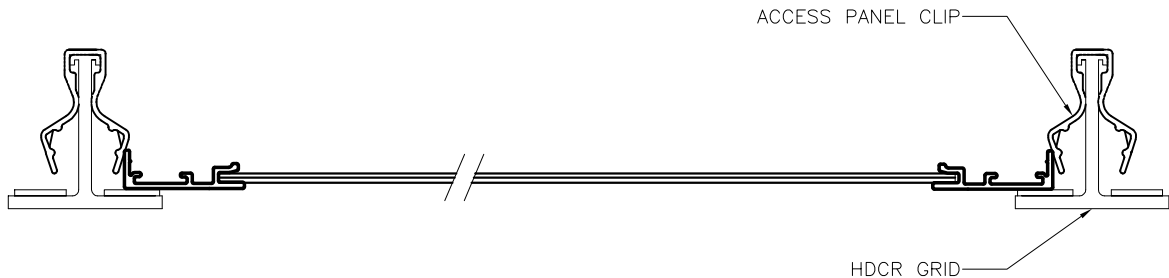


**PANEL MATERIAL / FINISH OPTIONS:**

- B12 POWDER COAT WHITE ALUMINUM
- AC ANODIZED CLEAR ALUMINUM
- #4 STAINLESS STEEL
- B25 CUSTOM FINISH

**NOTES:**

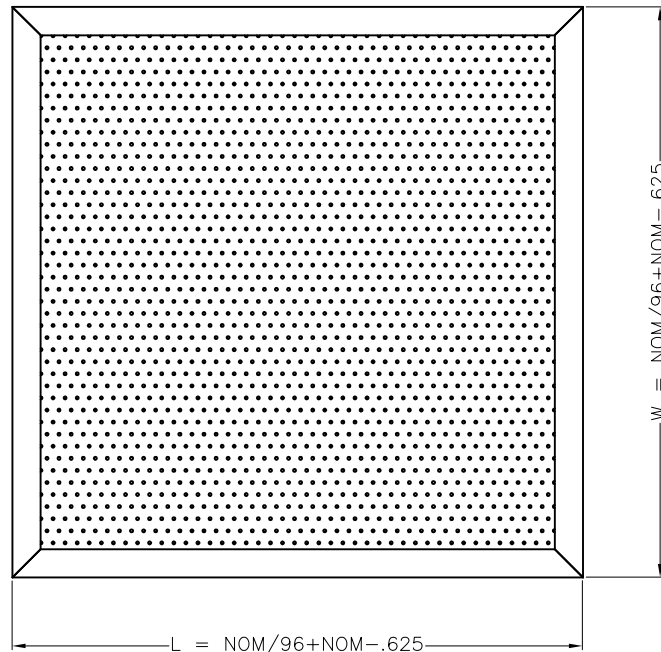
- SOLID CORE WITH EXTRUDED PERIMETER FRAME
- FACTORY TOLERANCE +/- 1/32 "



ALL METRIC DIMENSIONS ( ) ARE SOFT CONVERTED. IMPERIAL DIMENSIONS ARE CONVERTED TO METRIC AND ROUNDED TO THE NEAREST MILLIMETER.

<b>PROJECT:</b>		<b>price®</b>		
		<b>DK</b>	<b>HDCR</b> HEAVY DUTY WELDED CEILING SYSTEM	
				261082
<b>ENGINEER:</b>				
<b>CUSTOMER:</b>				
<b>SUBMITTAL DATE:</b>	<b>REVISION: C</b>			

**ACCESS PANEL**  
**PCE - PERFORATED FACE WITH EXTRUDED FRAME**



**PANEL MATERIAL / FINISH OPTIONS:**

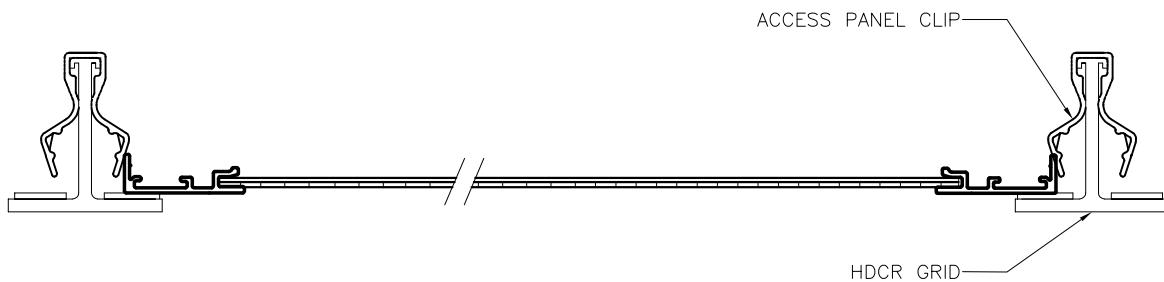
- B12 POWDER COAT WHITE ALUMINUM
- AC ANODIZED CLEAR ALUMINUM
- #4 STAINLESS STEEL
- B25 CUSTOM FINISH

**PERFORATION OPTIONS:**

- 13% FREE AREA (TO MATCH LFD, LFD3)
- 51% FREE AREA (TO MATCH LFDC)

**NOTES:**

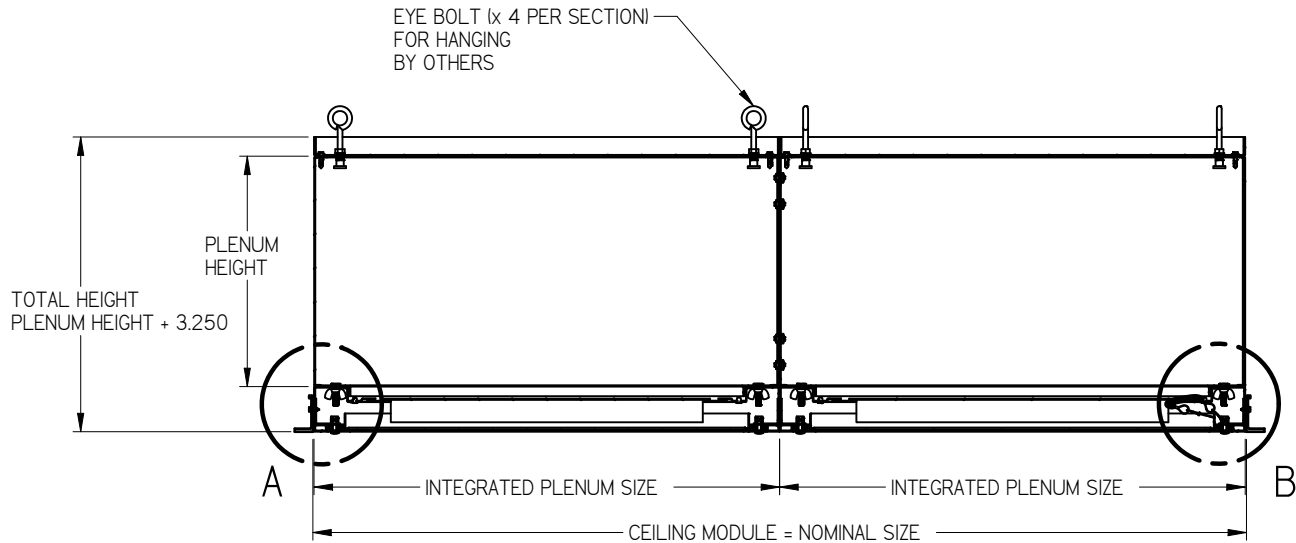
- PERFORATED CORE WITH SOLID BACK PANEL AND EXTRUDED PERIMETER FRAME
- FACTORY TOLERANCE +/- 1/32 "



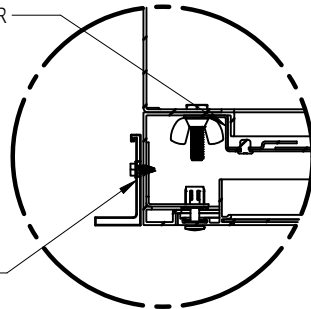
ALL METRIC DIMENSIONS ( ) ARE SOFT CONVERTED. IMPERIAL DIMENSIONS ARE CONVERTED TO METRIC AND ROUNDED TO THE NEAREST MILLIMETER.

PROJECT:		PRICE®	
		DK	HD CR HEAVY DUTY WELDED CEILING SYSTEM
ENGINEER:		261082	
CUSTOMER:			
SUBMITTAL DATE:	REVISION: C	06/04/2015	

## HEAVY DUTY CLEANROOM CEILING SYSTEM INTEGRATED PLENUM



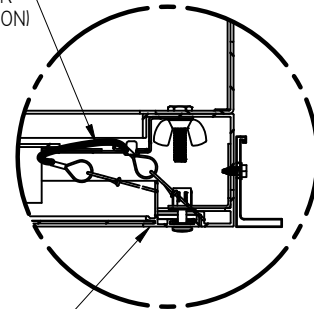
ADJUSTABLE DAMPER  
REMOVABLE FROM  
ROOM SIDE



DETAIL A

HDCR SECTION  
FASTENS TO INTEGRATED  
PLENUM ON SITE WITH  
SELF-TAPPING SCREWS  
BY OTHERS

SAFETY TETHER  
(x 2 PER SECTION)



DETAIL B

REMOVE FACE VIA  
[1/4 TURN] FASTENERS  
FOR ROOM SIDE ACCESS  
TO ADJUSTABLE DAMPER

### STANDARD CONSTRUCTION

- 14 GA (.064 THICK) ALUMINUM PLENUM
- ADJUSTABLE DAMPER - ACCESSIBLE ROOM SIDE BY REMOVING THE DIFFUSER FACE FIRST
- DIFFUSER FACE SECURED WITH QUICK RELEASE [1/4 TURN] FASTENERS
- STAINLESS STEEL RETAINER CABLES, 2 PER SECTION

### FINISH OPTIONS

- ☐ B12 WHITE POWDERCOAT STANDARD FINISH
- ☐ AC ANODIZED CLEAR FINISH

### INSTALLATION NOTES

- LARGER PLENUMS ARE SUPPLIED IN MULTIPLE SECTIONS FOR FIELD ASSEMBLY (SEE PAGE 2)
- PLENUM INSTALLATION AND MOUNTING IS THE RESPONSIBILITY OF THE INSTALLER.
- RECOMMENDED SCREW SPECIFICATIONS: #8 THREAD, LENGTH NO LONGER THAN 1/2"

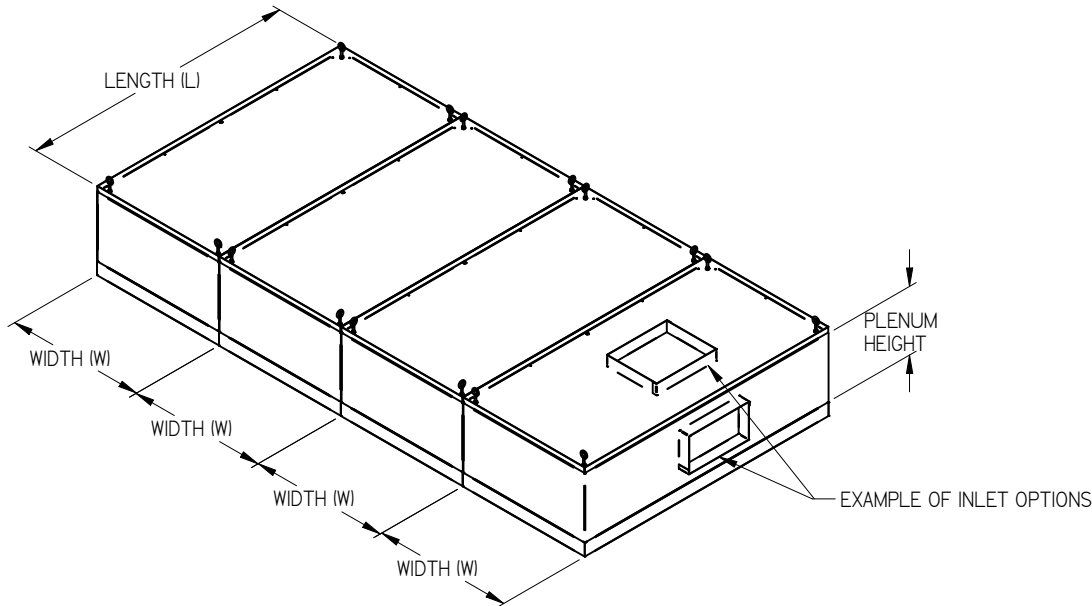
### NOTE: REQUEST CUSTOMIZED SUBMITTAL TO SUIT JOB SPECIFIC CONFIGURATION

ALL METRIC DIMENSIONS ( ) ARE SOFT CONVERTED. IMPERIAL DIMENSIONS ARE CONVERTED TO METRIC AND ROUNDED TO THE NEAREST MILLIMETER.

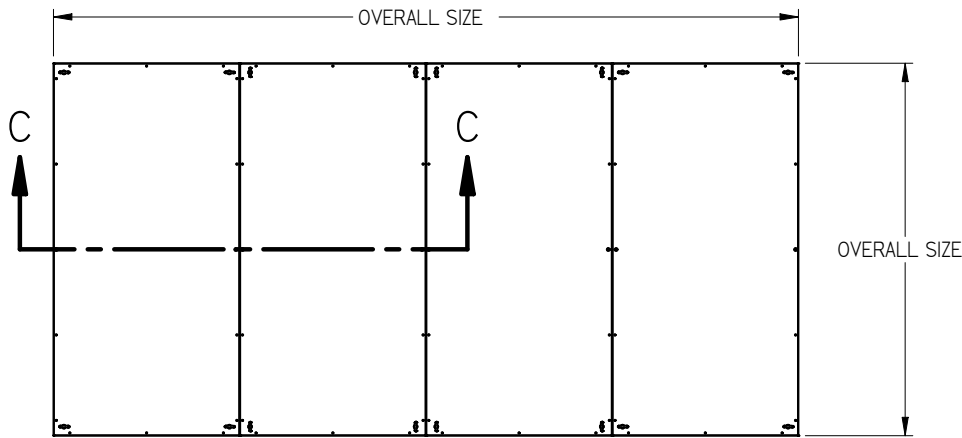
PROJECT:		 <b>DK</b>	
ENGINEER:			
CUSTOMER:		248726	
SUBMITTAL DATE:	SPEC. SYMBOL:	2015/06/02	<b>HDCR-PL</b> <b>HEAVY DUTY</b> <b>CLEANROOM</b> <b>CEILING SYSTEM</b> <b>INTEGRATED PLENUM</b>

## HEAVY DUTY CLEANROOM CEILING SYSTEM INTEGRATED PLENUM

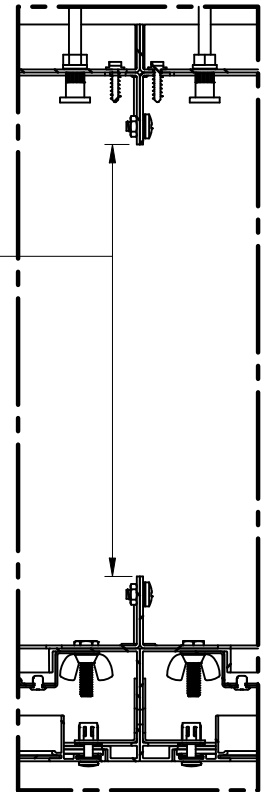
ASSEMBLY EXAMPLE:



TOP VIEW



OPENING CUTOUT FOR  
AIR TO PASS BETWEEN  
PLENUMS



DETAIL C  
BOLTED JOINT  
ASSEMBLY

**NOTES:**

- PLENUMS WILL SHIP IN MAXIMUM DIMENSIONS OF 121.250" x 48.500"
- PLENUM CONNECTIONS DONE IN FIELD BY OTHERS WITH FACTORY PROVIDED HARDWARE AND TO BE SEALED IN FIELD BY OTHERS WITH FACTORY PROVIDED SILICONE

ALL METRIC DIMENSIONS ( ) ARE SOFT CONVERTED. IMPERIAL DIMENSIONS ARE CONVERTED TO METRIC AND ROUNDED TO THE NEAREST MILLIMETER.

PROJECT:		<b>price</b>	<b>DK</b>	<b>HDCR-PL HEAVY DUTY CLEANROOM CEILING SYSTEM INTEGRATED PLENUM</b>
ENGINEER:				
CUSTOMER:		<b>248726</b>		
SUBMITTAL DATE:	SPEC. SYMBOL:	2015/06/02		