

CELEBRATING THIRTY-ONE YEARS OF EXCELLENCE



2019-2020 Annual Report



*The wheels on the bus go round and round...
Children, Teachers and Families will be welcomed back SOON!*

Even Wonka is patiently waiting for the gate to OPEN!

ABOUT DASEF



Founded in 1989, the DASEF (Delaware Aerospace Education Foundation), an independent non-profit educational organization having 501(c)(3) status, functions to raise the visibility and value of K-12 STEM (Science, Technology, Engineering and Mathematics) education to meet intellectual and workplace needs of the future. DASEF implements successful programs using proven instructional strategies to motivate, engage, educate, and inspire people from diverse backgrounds and communities in Delaware.

The DASEF vision is driven by the belief that “Wisdom Begins with Wonder.” Capitalizing on natural curiosity through activities that include a problem solving component enriches the learning process for participants.

DASEF has established itself as an innovative and progressive organization with the vision and resources required to link contemporary Earth and space themes with traditional school subjects to increase interest in science and technology.



Wisdom Begins with Wonder

2019-2020 ANNUAL REPORT

Dear Friends of DASEF,

In 2019, DASEF celebrated **30 consecutive** years of offering the Delaware Aerospace Academy with over 6,500 graduates and providing schools and youth organizations, families, and adults with applied learning experiences and activities. 2019 reflected the growth DASEF has experienced as school programs and outreach continue to expand at the Outpost to approximately 25,000 annually. Operational efficiencies improved by having a permanent base of operations.

Field Trip program curricula address Delaware's Science, Technology, Engineering and Mathematics (STEM) Standards. Information and experience are provided to give students and teachers opportunities for increased understanding of specific science topics and Standards through participation in science experiments and design challenges. Our Accredited Staff, Board and Council are creating programs and events that will sustain DASEF for years to come!

In December 2019, an outbreak of a novel strain of coronavirus (COVID-19) was identified and has since spread worldwide, including the U.S. On March 11, 2020, the World Health Organization characterized COVID-19 as a pandemic. In addition, as of March 16, 2020, Delaware Governor John Carney ordered the closure of the physical location of every "non-essential" business for what was an extended period. Due to disruptions and restrictions, DASEF's in person programs came to a halt and funding became limited. It was *heartbreaking* to cancel the 31st academy! When safe, it will be joyous to restart the academies.

Over the last year, DASEF has been challenged to creatively meet the needs of our educational community. Throughout the pandemic, we have adapted and worked to become a hub of Earth, Space and Science information, as well as a connector for residents, students, other nonprofits, and businesses. With a grant from Dupont, we have fine-tuned 26 field trip lessons that can be taught virtually or in person. With support from the Delaware Electric Cooperative, we forged a partnership with Embrace Delaware to reach children at the Charlton School. We have adapted our lessons for the 34 libraries to accommodate online or in person. In November, we organized and ran a virtual Girl's STEAM Symposium in conjunction with Delaware Space Grant and the University of Delaware. As schools begin to adjust to remote/hybrid/in person learning, teachers will begin to request virtual and possible in person field trips and outreach in 2021. **DASEF will be ready to serve them!**

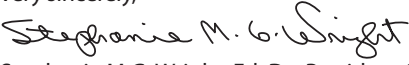
Work continued at the Innovation Technology Exploration Center (ITEC). Completion of our statewide facility will provide unique instructional areas, Earth systems displays and exhibits, and overnight accommodations for not only our Destination Academies and family programs, but also for public programs throughout the year. Financial management of DASEF embraces disciplined, conservative financial stewardship. All construction has been funded without debt and completed on budget. Solicitation of grants and other efforts seeking capital funding for construction continue and remain necessary to enable continued progress toward completion of ITEC. In 2020, in preparation for reopening, renovations were completed at the Environmental Outpost.

DASEF is appreciative of the collaboration and support of many partners that include Delaware's institutions of higher education, Delaware NASA Space Grant, Delaware State Optics Program, DuPont, Agilent, IBM, 3M, SSS Clutch, Northrup Grumman, State of Delaware libraries, and many other non-profit and corporate sponsors.

Our 39-acre site is centrally located and easily accessible to ALL in Delaware and the region. We strive to provide a vibrant, safe, positive, learning environment conducive to success. Our sustaining goal of completing ITEC is to expand DASEF's imprint and impact implementing a community model for Formal and Informal Education as a focal point for school programming, professional development, and public outreach.

Through the efforts of our Board members, advisory councils, our staff and many volunteers and corporate sponsors, 2020 illustrates a sample of the creative virtual, educational programs DASEF has delivered. We look forward to expanding our programs and ask for your continued support as we return to serving the region in 2021. **At DASEF, we ALL believe Wisdom Begins with Wonder!**

Very sincerely,


Stephanie M.G. Wright, Ed. D. • President & CEO


Charlie T. Michels • Chairman, Board of Directors



DASEF celebrates 30 consecutive years of hosting the Delaware Aerospace Academy!!



DASEF's 2019 Academy Staff!



During the Pandemic, DASEF was recognized as one of three Outstanding Small Businesses through the Central Delaware Chamber of Commerce in Kent County, Delaware.

2019 - 2020 COMPREHENSIVE FINANCIAL STATEMENTS

Educating and Inspiring

Following are comprehensive financial statements excerpted from DASEF's Fiscal years 2019 and 2020 (January 1 - December 31) audit performed by the accounting firm of BBD, LLP, Certified Public Accountants, Philadelphia, Pennsylvania. Complete audited statements are available from DASEF upon request.

Balance Sheets DECEMBER 31, 2019 and 2020

<u>Assets</u>	<u>2019</u>	<u>2020</u>
Cash and Equivalents	\$1,004,739	\$401,993
Investments	53,126	70,402
Accounts Receivable	5,358	-
Property and Equipment (Net)	<u>11,065,871</u>	<u>11,663,731</u>
Total Assets	\$12,129,094	\$12,136,126
<u>Liabilities and Net Assets</u>		
Accounts Payable	\$18,075	\$16,076
Net Assets	<u>12,111,019</u>	<u>12,120,050</u>
Total Liabilities and Net Assets	\$12,129,094	\$12,136,126



Since 1994, DASEF has awarded \$274,957 in Aerospace Academy Scholarships to 1,433 cadets!

STATEMENT OF REVENUE/EXPENSES - For the Years Ending DECEMBER 31, 2019 and 2020

<u>Revenues</u>	<u>2019</u>	<u>2020</u>
Contributions and Grants	\$969,874	\$243,657
Tuition and Programs	143,111	13,661
Other Revenue	<u>21,879</u>	<u>19,394</u>
Total Revenues	\$1,124,864	\$276,712
<u>Expenses</u>		
Program Expenses	\$405,069	\$231,583
General and Administrative Expenses	37,109	34,698
Fundraising	<u>1,500</u>	<u>1,400</u>
Total Expenses	\$443,678	\$267,681
Increase in Net Assets	\$681,186	\$9,031

MISSION:

To inspire and educate the people of the Delaware Valley in learning about Earth's environment, Earth and space science, technology, engineering and mathematics through the use of academies, presentations, symposiums, professional development, events, and activities and the resources of DASEF's Environmental Outpost.

CORE VALUES:

- Integrity and compassion
- Responsible decision making
- Environmental stewardship
- Innovation, exploration, and discovery

VISION:

To create an exceptional learning environment that inspires children and their families with a sense of appreciation for Earth and its place in the universe.

DASEF: OUR JOURNEY AT A GLANCE

DASEF: Explore, Discover, and Learn.....

Programs reach public, parochial, private and home schools, youth groups, Girls and Boys Club, teachers, libraries, 4 H, pre-school, scouts and regional families. Approximately 21% of the school children come from "Low Income families" (U.S. DOE-defined). DASEF's educational participants encompass the full range of socioeconomic backgrounds.

Girls and minorities, children at risk and those with special needs or disabilities are served. It is our goal to measurably contribute to enriching children, teachers and the public with educational interactive STEM experiences. We value and respect all children and their families and teachers and strive to instill a love of learning in each of them.

We have served over a 604,000 students, teachers and families in the Delaware Region.

DASEF EXPERIENCE



Cadets design mathematical structures in Destination Sky and Beyond.



Staff and cadets from Destination Mars get a briefing and tour at Northrup Grumman.



Children design and build a Lunar Rover with DASEF's Imagination Playground.



Using unique Turing Tumble kits, children learn the principles of computer coding.



Destination Orbit cadets get briefings and a tour at the Dover Air Force Base.



Face printing at our two annual Family Days is always a popular activity for children of all ages.



During an Educator Eyes on the Skies workshop, teachers construct and learn to use a Galileoscope compliments of NASA Space Grant.

ACKNOWLEDGEMENTS

SPECIAL THANKS ARE EXTENDED TO THE FOLLOWING:

DASEF Honorary Board and Board of Directors
DASEF Advisory Council
The Honorable Joseph R. Biden
The Honorable Thomas R. Carper
The Honorable Christopher A. Coons
The Honorable John Carney
Kent County Commissioners and Levy Court
3M
Adams/Bloom Memorial Scholarship Fund
Advantech
Agilent Technologies
Air Mobility Command Museum
American Association of University Women, Western Sussex
American Association of University Women, Wilmington
American Institute of Aeronautics and Astronautics,
Delaware Section
Bancroft Construction Company
Bank of America
BBD, LLP
Blue Earl Brewing Company
Boeing Company, Boeing Advanced Rotorcraft Systems
Bruce L. Hudson, Attorney at Law
Center for Environmental Monitoring and Analysis (CEMA)
Central Economic Development Council
Charles Parks Studios
Charter Oak Credit Union
Chichester Foundation/Lydia Foundation
Christiana Care Life Net
Civil Air Patrol
Dairy Queen of Newark – R & R of Delaware, Inc.
Dale McCalister
Delaware Division of Libraries
Delaware Electric Cooperative of Greenwood
Delaware Grant-in-Aid
Delaware NASA Space Grant Consortium
Delaware Solid Waste Authority
Delaware State Police
Delmarva Power
Delaware State University – CAOSS Program
Division of Delaware Parks and Recreation
Duck Creek Printing
DuPont Company
Goddard Space Flight Center
Greater Dover Foundation
IBM
ILC Dover, Inc.
Jean and Bruce Kraeuter
Joseph T. Farina, AIA
Kent County Chamber of Commerce
Kent County Tourism
Mr. and Mrs. Gerret Van S. Copeland
National Aeronautics and Space Administration
NASA Summer of Innovation Mini-Grant Program
New Castle Insurance, LTD
Northrop Grumman
Painted Stave Distillery
Proctor & Gamble Dover Wipes Company

Elmer and Betsy Read
Rolling Revolution Food Truck Group
Ronald McDonald House Charities of the
Philadelphia Region, Inc.
RPJ Waste Services
Seaford Lions Club
Sigma Data Systems, Inc.
Spitz, Inc.
SSS Clutch
State of Delaware General Assembly
Sutton Bus Company
The Christmas Shop Foundation
Town of Smyrna
University of Delaware
- Composite Center
- Engineering Department
- Physics Department
U.S. Air Force, Dover AFB
USDA Rural Development
Wilmington Flower Market, Inc.
Women are picking up Steam Scholarship Fund
Stephanie and Brian Wright
Yeager Wright Brothers' Scholarship Fund

**.....AND ALL THE MANY OTHER VOLUNTEERS WHO
MADE ALL THIS POSSIBLE.**



DASEF celebrates 30 Years with a book DASEF's Feathered Friends photographed by our intern, Julia Poblitzki. (left). Thirty-four books were presented to Dr. Annie Norman, Director, Delaware Division of Libraries, (right) by Dr. Stephanie Wright (DASEF President) for distribution to each Delaware library.

Diane Laird won DASEF's Feathered Friends book at the Kent County Chamber of Commerce 2019 Christmas Party.

DASEF'S YEARS IN REVIEW: PEOPLE MAKE THE DIFFERENCE



DASEF's Staff members gather for our 2019 Christmas luncheon.



During a Girl's After School Program sponsored by Painted Stave, young women use Agilent kits, to explore lighthouses and light refraction.



Mother and son busy constructing during one of DASEF's Build a Bot Explorations.



In an effort to connect with the community, the Delaware Electric Cooperative sponsored DASEF's first Drive in Movie on October 17, 2020. NASA bags with SPOOKY lessons and NASA handouts from Delaware Space Grant were distributed to 55 cars in attendance.



During the hiatus, DASEF had some needed renovations done at the Outpost.



Smyrna Christian School students investigate the Forces of Nature.



DASEF
5 Essex Drive • Bear, Delaware 19701
www.dasef.org

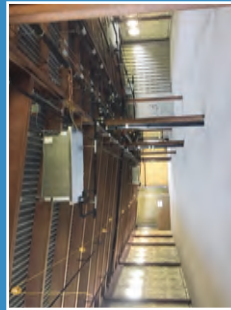
This report is made possible through the contribution of Mary Pat Hrybyk-Keith and NASA Space Grant.



DASEF
5 Essex Drive
Bear, Delaware 19701

www.dasef.org

NON-PROFIT
ORG. U.S.
POSTAGE PAID
WILMINGTON, DE
PERMIT NO. 1797



ITEC Education Building progress photos showing the completed fire protection and heat pump installations on all 3 floors.

DASEF strives to improve the quality of life through its advocacy of education, the environment, and strengthening the workforce.