

# Genetics of Athletic Performance

"The human body is centuries in advance of the physiologist, and can perform an integration of heart, lungs and muscles which is too complex for the scientist to analyse."

Roger Bannister (1955)



illustration by Bryan Christie

"There is likely a minimal set of physical traits or genetic makeup which facilitates achievement to a particular level of success, but I do not believe that genetics are necessarily an absolute limiter of exceptional performances."

Peter Vint (2011)

Gene 210 - Genomics and Personalized Medicine  
Andrew Roos and Thomas Roos  
May 15th, 2012

# What is Athletic Performance?

## Strength



Arnold Schwarzenegger

muscle mass  
force generation  
speed  
agility  
power

oxidative phosphorylation (ATP)  
creatine phosphate usage  
glycogen usage  
metabolic rate

resting heart rate  
max heart rate  
lactate threshold  
cardiac output  
ventillatory rate

## Endurance



Dean Karnazes

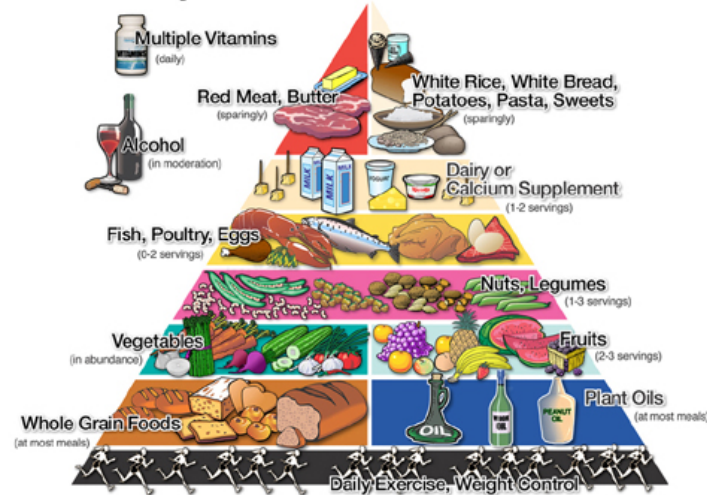
it all depends on what you want your body to accomplish

# Environmental Factors Affecting Performance



Lance Armstrong

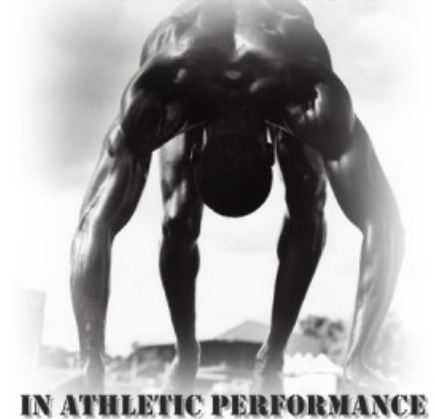
## New Food Pyramid



US Department of Agriculture

- nutrition: food + water
- sleep
- recovery
- weight

## MENTAL STRENGTH



- mental strength
- work ethic
- confidence
- focus on goals
- mental adaptation
- psychology

- training/conditioning
- skill level
- age
- PED's
- climate/temperature
- altitude

# Genetic Factors Affecting Performance



illustration from 3dscience.com

- gender
- ancestry & ethnicity
- anatomy



Usain Bolt

- biomechanical factors
- muscle fiber types
- muscle contraction velocity
- muscle elasticity
- soft-tissue strength



- fatigue resistance
- training adaptation
- recovery
- injury resistance

# How Scientists Test "Performance"

## Strength/Power

- 1) max weight lifted [kg]
- 2) max power [W/kg]
- 3) 100m sprint
- 4) vertical + horizontal jump distance



## Endurance

- 1) peak oxygen consumption (VO<sub>2</sub> max) [ml/min/kg]
- 2) running economy (RE) [ml/kg/km]
- 3) lactate threshold + clearance

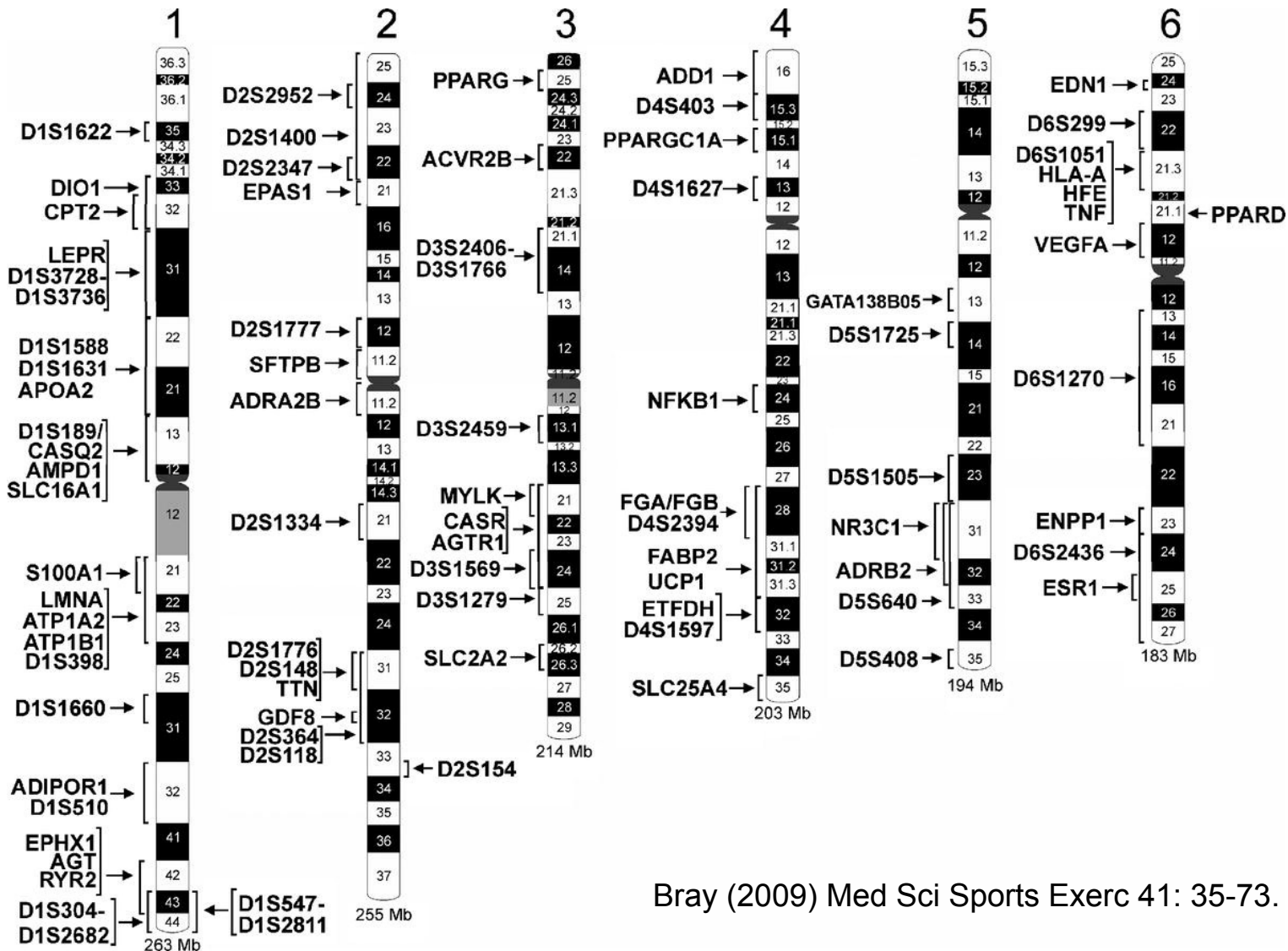
genetics + environment



elite athletes vs controls  
candidate based approach  
genetic testing for SNP  
data analysis

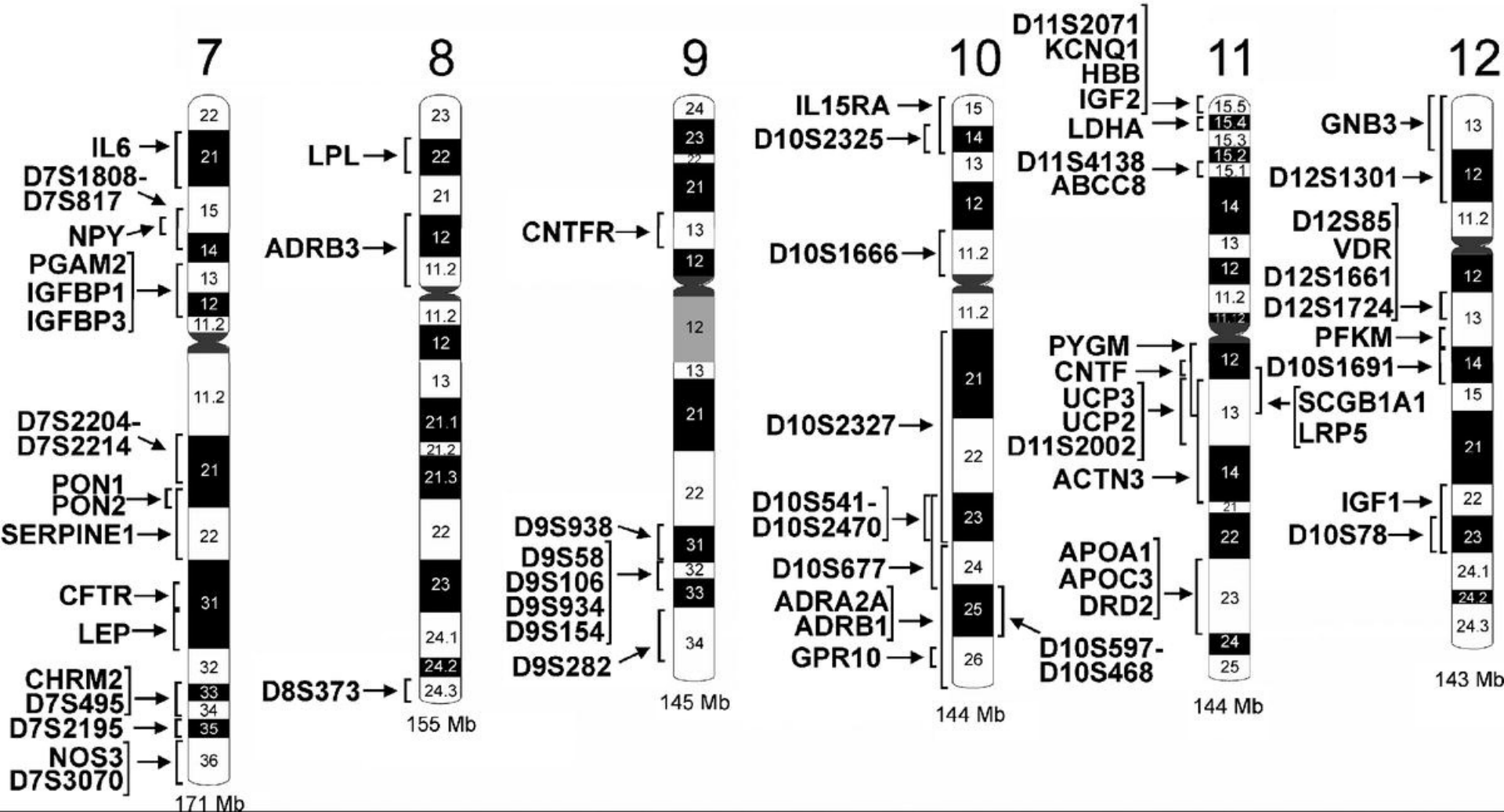


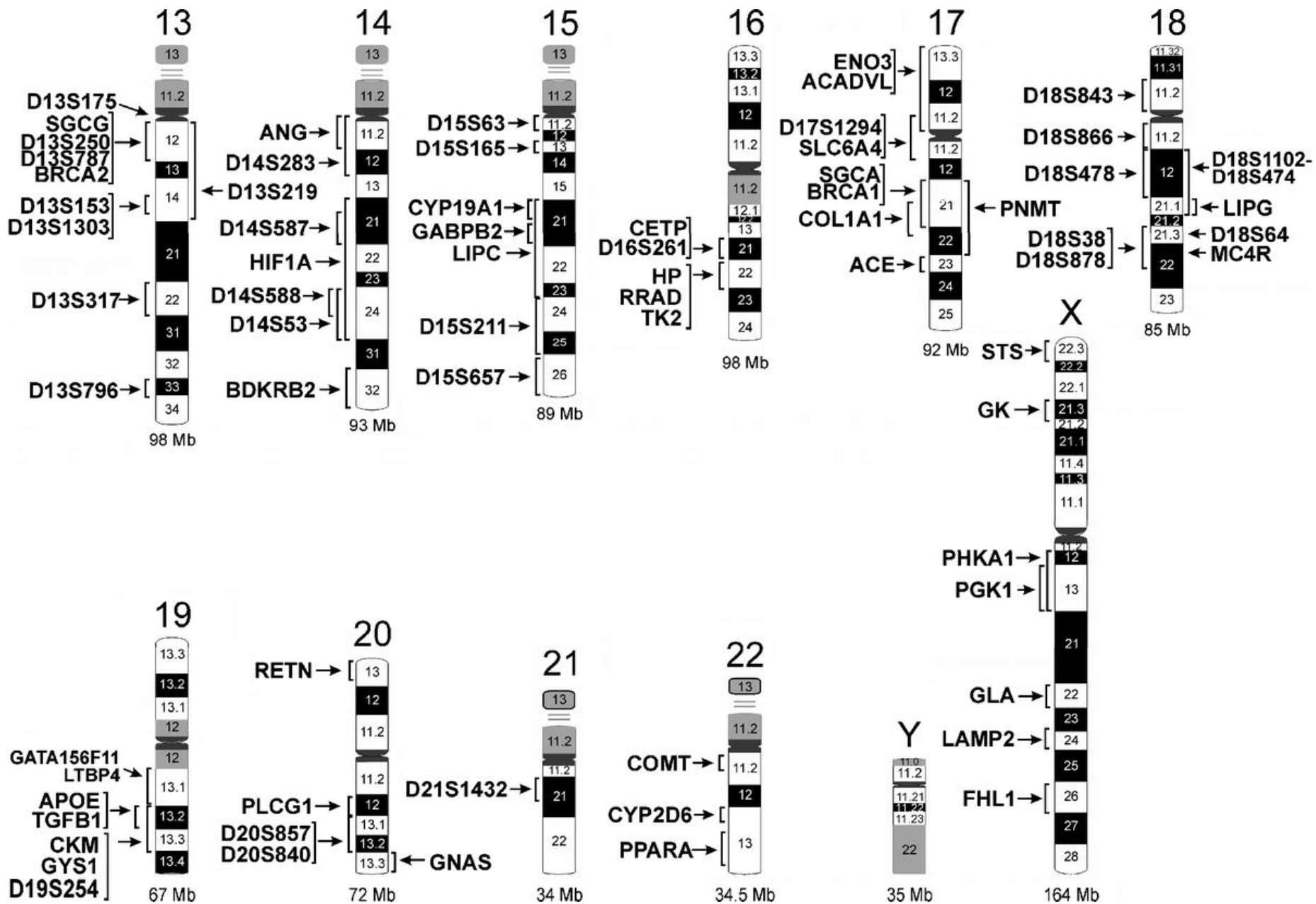
# The Human Gene Map for Performance and Health-Related Fitness Phenotypes



Bray (2009) Med Sci Sports Exerc 41: 35-73.

# 239 gene entries: 214 autosomal; 7 on X; 18 mitochondrial







# ACE

- **ACE**: angiotensin converting enzyme
  - 1) converts inactive angiotensin I to active angiotensin II in liver
  - 2) degrades bradykinin & other vasodilator peptides
- functions= vasoconstriction, salt/water balance, inflammation, RBC synthesis, tissue oxygenation, muscle efficiency.
- I allele: 287bp insertion; lower ACE activity
  - I/I genotype -> increased endurance performance [p=0.009]
  - increased metabolic response from training, metabolic efficiency
- D allele: deletion variant; higher ACE activity
  - D/D genotype -> increased power performance [p=0.004]
  - increased strength gain from training, L ventricle mass,  $\text{VO}_2$  max
- many studies w/ conflicting results on ACE & athletic performance
  - 8 show positive association & 5 show no association
  - different sports, different criteria for cases/ct's, different methods

Gayagay (1998) Hum Genet 103:48–50; Montgomery (1998) Nature 393:221–22; Montgomery (1999) Lancet 353:541–45; Myerson (1999) J Appl Physiol 87:1313–16; Tsiano (2004) Eur J Appl Physiol 92:360–62; Thompson (2007) High Alt Med Biol 8:278–85.

# ACE

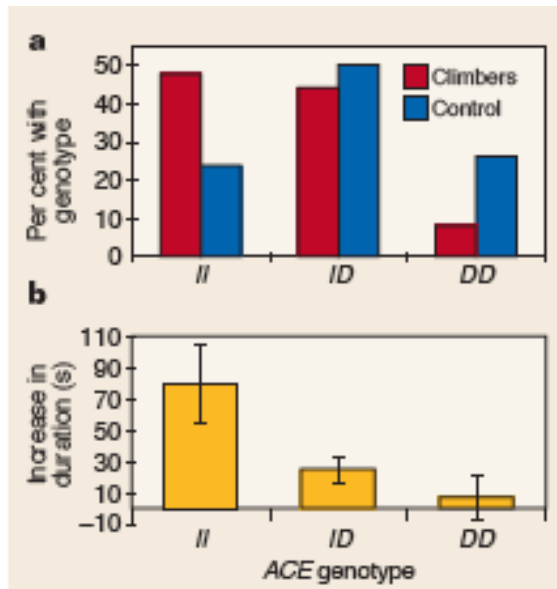


TABLE 1. By ACE I/D GENOTYPE AND MEAN MAXIMUM ALTITUDE ACHIEVED

ACE genotype	Maximum altitude achieved (m)
II	8559 ± 565
ID	8107 ± 653
DD	8079 ± 947

TABLE 2. ACE I/D GENOTYPE AND SUCCESS IN ASCENT TO 8000 m

	Group A (climbed >8000 m)	Group B (never climbed >8000 m)	Total
II	30 (32.6%)	3 (6.4%)	33 (23.7%)
ID	41 (44.6%)	28 (59.6%)	69 (49.6%)
DD	21 (22.8%)	16 (34.0%)	37 (26.6%)
I-allele frequency	0.55	0.36	0.49
D-allele frequency	0.45	0.64	0.51

TABLE 3. LOGISTIC REGRESSION ANALYSIS OF THE CATEGORICAL VARIABLES INFLUENCING SUCCESS IN ASCENT TO 8000 m

	Significance
Age	0.620
Sex	0.184
Race	0.118
Smoker	0.187
ACE I-allele	0.002

	II		D+		p*		Adjusted mean change†		Adjusted p‡
	n	Mean (SD) change	n	Mean (SD) change	II	D+	II	D+	
<b>Total mass</b>									
Bioimpedance (kg)	19	1.97 (2.57)	61	-0.10 (3.32)	0.03	0.54	2.14	-0.10	0.001
Skinfold assessment (kg)	14	1.88 (2.59)	13	-0.57 (1.85)	0.01	0.28	1.78	-0.47	0.01
MRI volume (cm <sup>3</sup> )	16	9.96 (10.15)	14	0.15 (7.20)	0.001	0.98	9.27	0.83	0.01
<b>Fat mass</b>									
Bioimpedance (kg)	19	0.73 (1.69)	57	-0.26 (1.54)	0.07	0.21	0.55	-0.20	0.04
Skinfold assessment (kg)	14	-0.13 (1.23)	13	-1.66 (1.60)	0.67	0.004	-0.38	-1.35	0.05
MRI volume (cm <sup>3</sup> )	16	0.59 (6.36)	14	-3.34 (5.12)	0.70	0.08	0.16	-2.86	0.20
<b>Non-fat mass</b>									
Bioimpedance (kg)	19	1.09 (1.59)	57	-0.08 (2.61)	0.007	0.82	1.31	-0.15	0.01
Skinfold assessment (kg)	14	2.01 (1.83)	13	1.03 (1.19)	0.002	0.01	2.00	1.03	0.11
MRI volume (cm <sup>3</sup> )	16	9.57 (7.21)	14	3.61 (4.25)	0.0001	0.01	9.32	3.88	0.02

Montgomery (1998) Nature 393:221–22; Montgomery (1999) Lancet 353:541–45; Thompson (2007) High Alt Med Biol 8:278–85.

# ACTN3

- alpha-actinin-3: crosslinks actin thin filaments in skeletal muscle type 2 (fast) fibers; thought to play a role in maintaining ordered fiber arrays and coordinating contraction
- R577X: rs1815739; C->T; 25% Asian, 18% European, 1% African

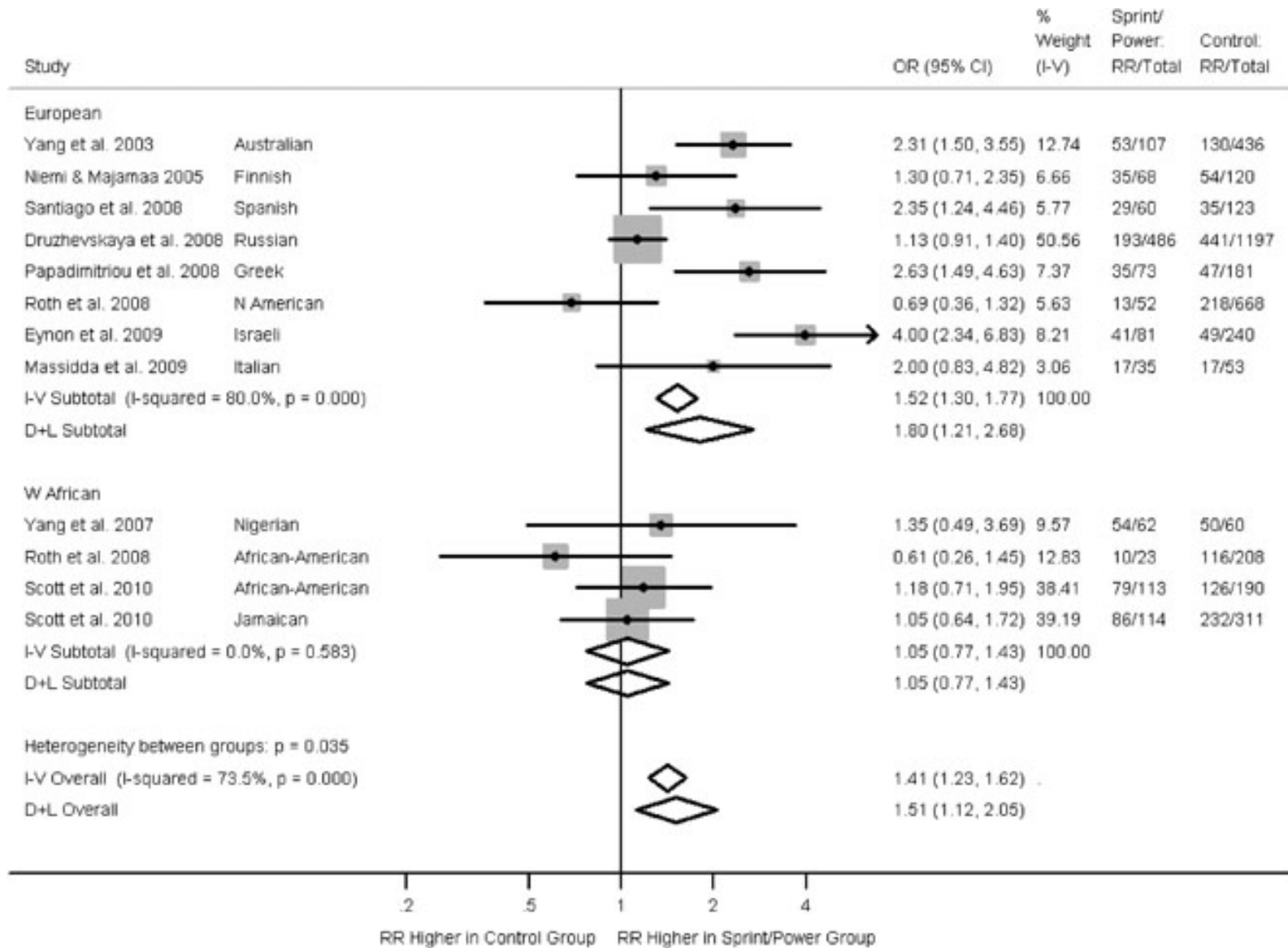
Yang (2003)

- CC [RR] genotype associated with increased strength (OR=2.31; p=0.0001)
- TT [XX] genotype associated with increased endurance (OR=1.38; p=0.148)

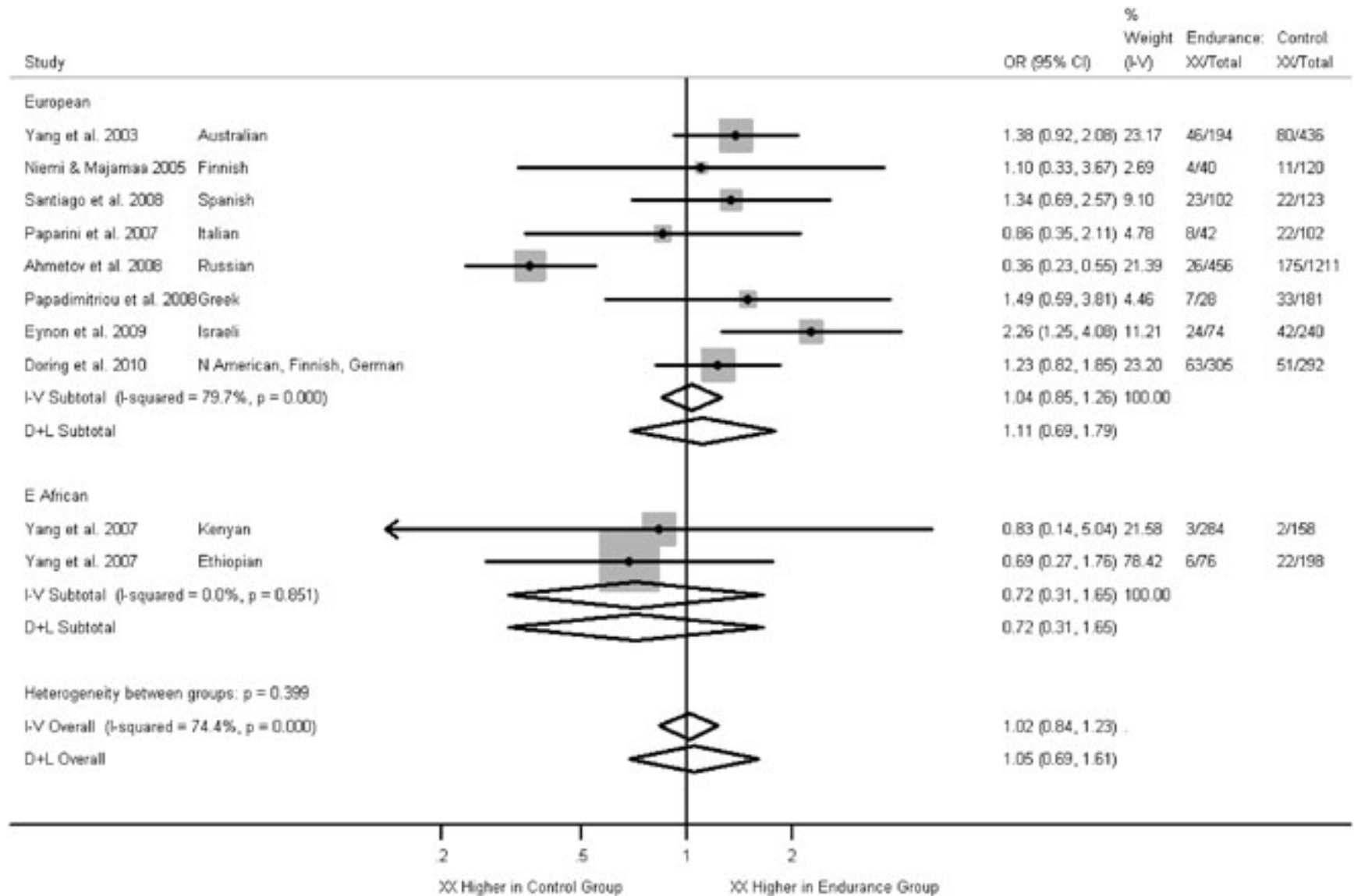
Controversial

- 10 studies showing association between RR and strength/power
- 2 studies showing no association between RR and strength/power
- 1 study showing association between XX and endurance
- 7 studies showing no association between XX and endurance

# ACTN3



# ACTN3



# ADRB1, ADRB2, ADRB3

- beta-adrenergic receptors 1/2/3: G-protein coupled receptors in cardiac and adipose tissue that regulate cardiac function and metabolism
- cardiac tissue: activated receptor -> increased cardiac output
- adipose tissue: activated receptor -> increased lipid mobilization for energy production

**ADRB1:** rs1801253; Arg389Gly; C->G

- C allele associates with increased  $\text{VO}_2$  max and exercise time/endurance ( $p=0.002$ )
- G allele associates with decreased  $\text{VO}_2$  max ( $p=0.006$ )

**ADRB2:** rs1042713; Arg16Gly; G->A

- G allele associates with elite endurance performance in males ( $p=0.03$ )
- A allele associates with increased BMI and decreased  $\text{VO}_2$  max ( $p<.001$ )

**ADRB2:** rs1042714; Gln27Glu; C->G

- C allele associates with elite distance running in middle age women ( $p=0.05$ )
- G allele associates with increased BMI and decreased  $\text{VO}_2$  max ( $p=0.0001$ )

Wagoner (2002) Am Heart J 144.

Wolfarth (2007) Met Clin Exp 56: 1649-1651.

Moore (2001) Metabolism 50: 1391-1392.

# ADRB1, ADRB2, ADRB3

**ADRB3:** rs4994;Trp64Arg; T->C

- C allele associates with elite endurance performance (p=0.0008)
- study: elite Spanish athletes for endurance or strength sports
- TT genotype: no association in endurance or strength vs controls
- TC genotype: association in endurance vs controls but not strength vs controls
- CC genotype: very rare; association in strength vs controls

# COL5A1 and COL6A1

- alpha1 chain of type V and type VI collagen
- extracellular matrix (ECM) structural component of musculoskeletal soft tissue
- known mutations involved in various clinical muscle diseases (cause hyper-elasticity in the muscles -> decreased function)
- biomechanics: stiffer connective tissue (inflexibility) -> enhanced storage/return of energy -> increased running economy -> increased endurance performance

## COL5A1

- BstUI RFLP: T/C
- TT genotype (vs CT + CC) associated with increased endurance performance (faster Ironman Triathlon run time) [p=0.020]

## COL6A1

- rs35796750: intron 32, T/C, T= ancestral allele
- CC genotype (vs CT + TT) associated with multiple muscle diseases
- TT genotype (vs CT + CC) associated with increased endurance performance (faster Ironman Triathlon finish time) [p=0.030]



# EDN1

- endothelin 1: expressed in vascular endothelium; acts as a vasoconstrictor to regulate blood pressure

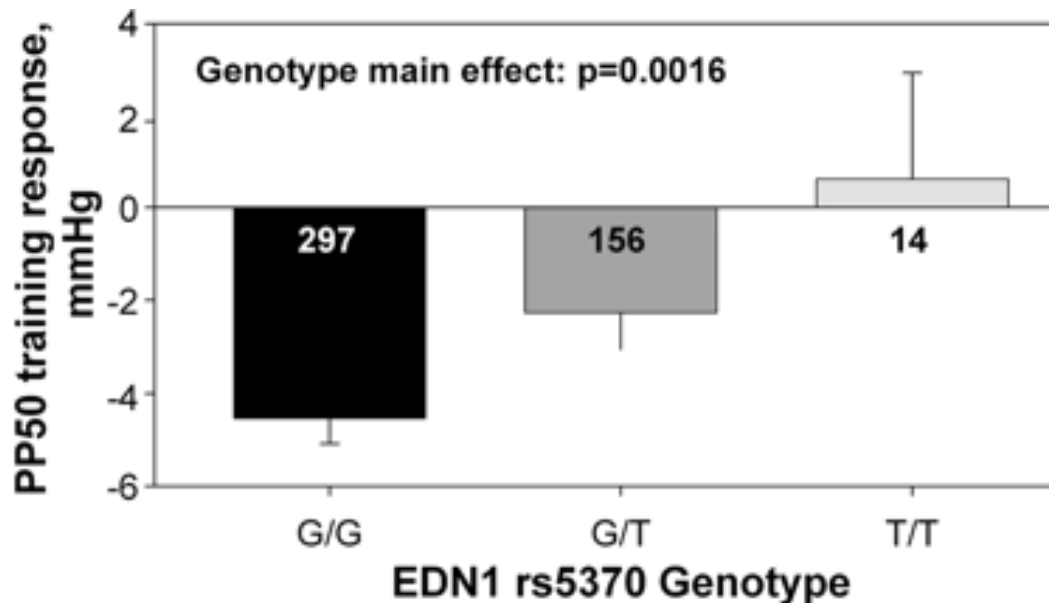
**rs5370**: Lys198Asn; G->T

- G allele associates with increased cardiorespiratory fitness (OR=1.95; p=0.00025)

- T allele associates with increased hypertension (p=.0003)

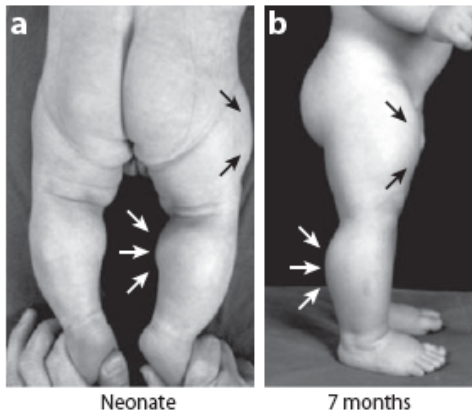
- for Caucasians only and not African Americans

- T allele decreases the  $VO_2$  max and pulse pressure response to training



# MSTN

- **MSTN**: myostatin (TGF-B family member)  
negative regulator of skeletal muscle growth
- homozygous mutation in MSTN -> inactivation  
human patient 1-4.5yrs old w/ increased muscle mass
- protein truncation deletion removing C-term domain MSTN -> catalytically dead  
increased muscle mass in livestock (cattle, pigs)
- *Mstn* k/o mouse model -> increased muscle mass & # muscle fibers  
overall more fast glycolytic type II muscle fibers than ct



Schuelke (2004) N. Engl. J. Med. 350:2682–88; Marchitelli (2003) Mamm. Genome 14:392–95;  
McPherron (1997) Nature 387:83–90; Girgenrath (2005) Muscle Nerve 31:34–40.

# NRF1, NRF2

- **NRF1**: nuclear respiratory factor 1  
role in exercise adaptation: mitochondrial biogenesis, heme biosynthesis
- rs240790  
CC genotype associated w/ increased  $\text{VO}_2$  max + RE w/ training [p=0.004]
- rs6949152  
AA genotype associated w/ increased  $\text{VO}_2$  max w/ training [p=0.047]
- **NRF2/NFE2L2**: nuclear regulatory factor 2  
trans factor activating oxidative stress response & antioxidants
- rs12594986, rs8031031, rs7181866  
A/T/G haplotype associated w/ 57% higher training response [p=0.006]

# PPARGC1A

- **PPARGC1A**: peroxisome proliferators-activated receptor  $\gamma$  coactivator 1a  
activator of ox phos genes that control glucose & lipid metabolism  
skeletal muscle fiber-type formation  
mitochondrial biogenesis
- rs8192678: G  $\rightarrow$  A; Gly482Ser  
AA genotype associated w/ higher  $VO_2$  max in European men [ $p < 0.0001$ ]  
not associated w/ better  $VO_2$  max or RE in Chinese men
- rs6821591: A  $\rightarrow$  G; 3' UTR  
GG genotype associated w/ higher  $VO_2$  max & RE in Chinese men

# Other Reported Performance Enhancing Polymorphisms (PEPs)

- 2 validated markers w/ multiple positive associations: ACE, ACTN3
- 4 other markers w/ positive associations: ADRB2, AMPD1, APOE, BDKRB2
- physiological categories influenced by human PEPs
  - cardiac function
  - circulatory system
  - respiratory system
  - muscle structure
  - adrenergic receptors
  - mitochondrial function (oxidative phosphorylation)
  - mitochondrial DNA
- 239 total reported PEPs but very few validated
- potential limitations of studies
  - studied only specific populations only specific gender
  - too few subjects
  - different criteria for cases vs controls
  - significant p-values (?)



Daily Health Advice - Genetics in Sports

# Athletic performance is determined by a combination of factors

- measure: Ironman Triathlon finish times

  - no significant difference in training time/volume between "fast" and "slow" groups

  - age + weight explain 14% of variance

  - COL6A1 genotype (TT vs TC/CC) explains 8% of variance

    - BDKRB2 +9/+9 & NOS3 GG genotypes associate w/ significantly slower times [p=0.001]

- measure: endurance ( $VO_2$  max + LT) + efficient muscle contraction

  - ACE-I/BDKRB2-9 haplotype significantly associated in Olympic athletes vs ct's [p=0.003]

- heritability of beneficial endurance traits is ~50% ( $VO_2$  max, RE, LT)

- heritability of athletic status in women is ~66% (recreational vs elite competition)

  - positive associations for SLC9A9, FABP2, UCP1

- can we identify other factors?

Williams (2004) J. Appl. Physiol. 96:938–42.

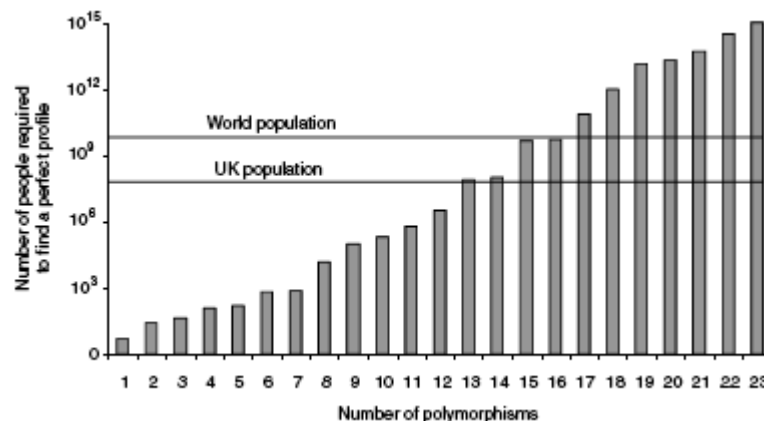
Saunders (2006) Hum. Mol. Genet. 15:979–87.

De Moor (2007) Twin Res. Hum. Genet. 10:812–20.

# Can There be a Perfect Endurance Athlete? - Population Distribution of Genetic Potential

Table 1. Probability of perfect genetic profile by number of polymorphisms

Number of polymorphisms influencing endurance performance	New gene included at each stage	Typical frequency of optimal genotype (%)	Probability of possessing a 'perfect' profile	
			% chance	Approximate odds ratio
1	<i>ACE</i>	21	21.0	1 : 5
2	<i>ACTN3</i>	18	3.78	1 : 25
3	<i>ADRA2</i>	62	2.34	1 : 40
4	<i>ADRB2</i>	35	0.82	1 : 120
5	<i>AMPD1</i>	80	0.66	1 : 150
6	<i>APOE</i>	24	0.16	1 : 600
7	<i>ATP1A2*</i>	81	0.13	1 : 800
8	<i>ATP1A2</i>	5	$6.4 \times 10^{-3}$	1 : 16 000
9	<i>BDKRB2</i>	15	$9.6 \times 10^{-4}$	1 : 100 000
10	<i>CKM</i>	49	$4.7 \times 10^{-4}$	1 : 200 000
11	<i>EPAST*</i>	33	$1.5 \times 10^{-4}$	1 : 600 000
12	<i>EPAST1</i>	19	$2.9 \times 10^{-5}$	1 : 3 million
13	<i>HFE</i>	4	$1.2 \times 10^{-6}$	1 : 85 million
14	<i>HIF1A</i>	77	$9.1 \times 10^{-7}$	1 : 110 million
15	<i>HLA-A</i>	2	$1.8 \times 10^{-8}$	1 : 5.5 billion
16	<i>MTND5*</i>	93	$1.7 \times 10^{-8}$	1 : 6 billion
17	<i>MTND5</i>	7	$1.2 \times 10^{-9}$	1 : 85 billion
18	<i>MTND5</i>	7	$8.3 \times 10^{-11}$	1 : 1.2 trillion
19	<i>MT-TT</i>	7	$5.8 \times 10^{-12}$	1 : 17 trillion
20	<i>PPARA</i>	70	$4.0 \times 10^{-12}$	1 : 25 trillion
21	<i>PPARGCIA</i>	40	$1.6 \times 10^{-12}$	1 : 62 trillion
22	<i>UCP2</i>	17	$2.7 \times 10^{-13}$	1 : 364 trillion
23	<i>VEGFA</i>	30	$8.2 \times 10^{-14}$	1 : 1212 trillion



Results = "Using probability calculations, we found only a 0.0005% chance of a single individual in the world having the 'preferable' form of all 23 polymorphisms."

Williams (2008) J Physiol 586(1):113-21.

the human body works as a "system": if one factor is sub-par, then the whole system loses the capacity to function at optimal performance

# What Will the Future Hold for Genetics and Athletics?

- all athletes competing at recreational to elite levels have complicated genetic profiles & environmental histories
  - many factors influence potential athletic ability
  - actual performance & success is hard to predict
- genetic engineering ("gene doping") to enhance athletic performance
  - many new PEP targets will be validated in the near future
  - delivery methods are available to allow beneficial "gene therapy"
  - will detection ever be able to keep up with "cheating"?



- scientist viewpoint= global perspective to understand how certain alleles beneficial to performance arose & how they have spread geographically
- athlete viewpoint= develop training program to maximize individual genetic endowment for optimal performance



# Direct-to-consumer testing for athletic performance

Atlas Sports Genetics  
2008  
"Atlas First SportGene  
Test"

AlBioTech  
June 2011  
"Sports X Factor"



**Sports X Factor**  
**DNA Collection Kit**  
Genetic Athletic Assessment Testing

**Order Your Sports X Factor Kit Today**

## What is Included?

The following tests are included in the Sports X Factor basic panel, for the total cost of \$200:

### Performance Indicators

- ACTN3** Highly significant associations between ACTN3 genotype and muscle fiber type, with one genotype indicating fast twitch muscle fibers and another slow twitch muscle fibers. Fast twitch fiber type has been associated with elite power/sprinter performance and slow twitch fibers have been related to endurance athletes.
- ACE** Related to cardiovascular and skeletal muscle function, training response of muscle efficiency and skeletal muscle hypertrophy. The one ACE genotype has been associated with elite endurance performance in runners, whereas a second genotype has been shown to be represented in elite sportsmen with a power/sprint phenotype.
- PPARGC** Gene function is associated with cellular energy metabolism. Two genotypes associated with this gene have been positively associated with endurance.
- DI01** Associated with isometric grip strength and leg-extensor strength.
- VEGFR** Associated with elite athlete status, endurance performance of female rowers and muscle fiber type composition.
- NOS3** Associated with elite power sports performance.
- IL6** Associated with sprint/power sports performance.

### Markers Risk Factors

- Concussion** Looks at the gene involved in the inflammatory response of the brain after a concussion.
- Heart** Panel looks at genes involved with Hypertrophic cardiomyopathy (HCM), a condition in which structural abnormalities can be present in the heart. HCM is the number one cause of sudden unexpected cardiac death in young athletes.

<http://www.sportsxfactor.com/Home.aspx>



601 Biotech Drive  
Richmond, VA 23235  
804.648.3820 Fax 804.648.2641

Dr. Anyone A. Jones  
Anywhere Laboratory  
123 A Street Suite 000  
Anywhere, VA 12345  
1.804.456.7890

**Name:** John Smith  
**Date of Birth:** 01/02/85  
**Sex:** Male  
**Age:** 16  
**Phone:** 1-123-456-7890

**Date Collected:** 02/03/11  
**Date Received:** 02/05/11  
**Date Reported:** 02/10/11



SXF12-3456-1234567

**PERFORMANCE INDICATORS**

Gene	Genotype	Reynolds Score	
DIO1	The Type I iodothyronine deiodinase (DIO1) protein encoded by this gene is involved in thyroid hormone activation. Higher isometric grip strength and leg-extensor strength has been associated with the D1a-T allele of this gene..	<b>Power Score (0-3)</b> 2.0	
NOS3	The NOS3 gene encodes nitric oxide synthase 3, and is also known as eNOS. A small change (NOS3 -786 T>C polymorphism) in this gene has been studied and found to be associated with elite power sports performance.	<b>Power Score (0-4)</b> 2.0	
IL6	Interleukin-6 (IL-6) gene encodes a multifunctional cytokine expressed in many tissues involved in inflammatory processes and may additionally modify the regulation of energy balance. One small change in this gene (the IL6 -174 G/C polymorphism) is associated with sprint/power sports performance, with the GG genotype exerting a favorable effect. CC genotypes have been associated with obesity in some studies.	<b>Power Score (0-3)</b> 3.0	
ACE	Sequence variants in the angiotensin I converting enzyme gene (ACE) have been shown in studies to have positive effects on athletic performance. This test detects the I and D variants of ACE with the D variant favoring improved endurance ability, the I allele promotes more power-orientated events.	<b>Power Score (0-3)</b> 2.0	<b>Endurance Score (0-3)</b> 0
ACTN3	The actinin, a-3 (ACTN3) gene encodes for the synthesis of a-actinin-3, a protein necessary for producing fast contractions, in Type II skeletal-muscle fibers. This polymorphism is associated with elite power/sprint performance. Conversely homozygous X/X indicates only slow twitch muscle fibers present. Studies have shown highly significant associations between ACTN3 genotype and athletic performance.	<b>Power Score (0-6)</b> 3.0	<b>Endurance Score (0-6)</b> 3.0
PPARGC	The peroxisome proliferator-activated receptor gamma coactivator-1a (PPARGC) gene function is associated with cellular energy metabolism. Two genotypes associated with this gene have been positively associated with endurance. The Gly482Ser genotype is associated with endurance athletes. The Pro12Ala genotype has only been shown so far to have a favorable impact on males.	<b>Endurance Score (0-5)</b> 2.5	
VEGFR	Vascular endothelial growth factor receptor 2 (VEGFR2) is essential to induce the full spectrum of VEGF angiogenic responses to aerobic training. One allele associated with this gene (His472Gln polymorphism ) has been associated with elite athlete status, endurance performance and muscle fiber type composition in females.	<i>Females Only</i>	

**RISK FACTOR ASSESSMENT**

Condition	Description	Present - Absent
Concussion Marker*	Athletes with the concussion risk factor variant gene who were studied were tested for recovery time after a concussion and found they are more likely to recover slower than non-variant carriers. It is not entirely clear how the marker affects brain recovery, but the gene is involved in the inflammatory response of the brain after injury, and people with the variant appear to take longer to clear their brains of a particular protein called amyloid, which floods in following head trauma.	Absent
Heart Screen*	Hypertrophic cardiomyopathy (HCM)- A disease of the muscle of the heart in which a portion of the heart is thickened without any obvious cause. We screen for risk factors in 3 Genes which represent 80% of known risk factors for HCM.	Absent
Acquired Arrhythmia*	This test detects the risk of acquired arrhythmia by detecting a variant of the cardiac sodium channel gene SCN5A which is associated with arrhythmia in African Americans.	Absent

**SUMMARY**

Gene	Description	Reynold's Score (Percentile)	
Performance	Total performance score is calculated for both endurance and strength. The score is based on the summary of the results from the genetic markers tested by AIB on the sample received. This score is weighted and calculated based on several factors including the genotype reported and frequency in the general population. VEGFR marker is for females only while one of the two PPARGC genotypes tested is for males only. The score is a guide to help the individual to maximize fitness focusing on strength, endurance and muscle growth (Please refer to individual workout page for instructions on how to obtain a tailor made workout based on performance results). Your results will be provided as a numerical value for each genetic marker and in the summary as the total score calculated for both endurance and power. Included with your total score for each area will be the percentile your score achieved in relation to the database of individuals who have been previously tested with Sport X Factor. An average score will be one that is in the 50th percentile.	<b>Power</b> 10.0 90th Percentile	<b>Endurance</b> 5.5 69th Percentile

# Direct-to-consumer testing for athletic performance

**\*It should be emphasized that genes are only one part of the picture. Athletic performance is likely to result from a combination of many factors including genetics, but also skill level, work ethic, environmental factors, and history of training and conditioning. Moreover, many sport activities rely on both power and endurance to be successful.**

**Concussion** Looks at the gene involved in the inflammatory response of the brain after a concussion.

**Heart** Panel looks at genes involved with Hypertrophic cardiomyopathy (HCM), a condition in which structural abnormalities can be present in the heart. HCM is the number one cause of sudden unexpected cardiac death in young athletes.