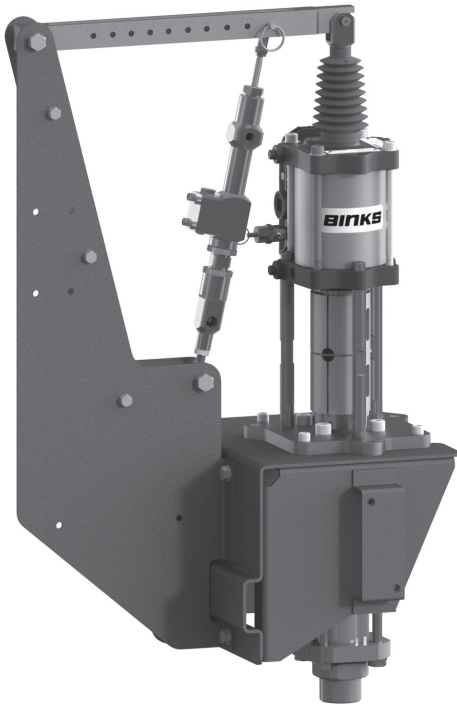
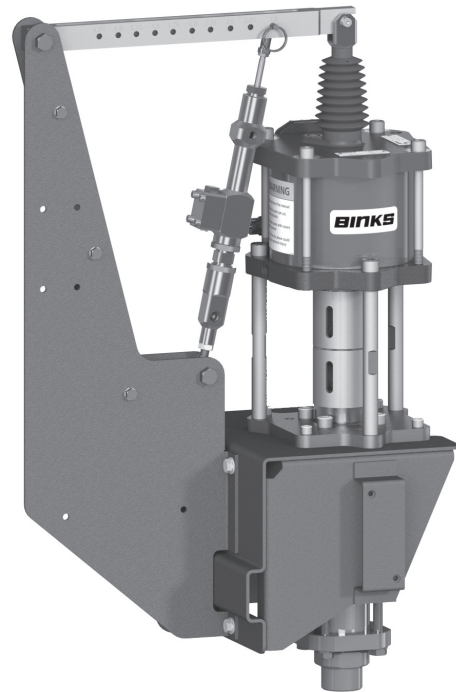


**BINKS® CENTURY PUMP ASSEMBLIES**  
**MODELS: CX2006HC 6.5:1, CX2017HC 17:1**



**CX2006HC**



**CX2017HC**

**SPECIFICATIONS**

	<b>CX2006HC</b>	<b>CX2017HC</b>
Ratio:	6.5:1	17:01
Maximum air inlet pressure:	116 psi (8 bar)	116 psi (8 bar)
Maximum recommended continuous cycle rate:	20 cycles/min	20 cycles/min
Air consumption @ 20 cycles/min and 116 psi (8 bar) air inlet pressure:	5.2 SCFM (147 LPM)	17.6 SCFM (498 LPM)
Maximum fluid pressure:	750 psi (52 bar)	1970 psi (136 bar)
Displacement per cycle:	4.3 oz (127 cc)	4.3 oz (127 cc)
Output @ 60 cycles/min:	2.0 gal/m (7.6 l/m)	2.0 gal/m (7.6 l/m)
Maximum operating temperature:	160°F (71°C)	160°F (71°C)
Air inlet connection:	3/8" BSP (F)	3/8" BSP (F)
Piston diameter:	3.3 in (85 mm)	5.5 in (140 mm)
Stroke length:	3 in (75 mm)	3 in (75 mm)
Sound level:	96.2 dB	97.3 dB
Fluid inlet connection:	1 1/4" NPT (M) & 1" NPT (F)	1 1/4" NPT (M) & 1" NPT (F)
Fluid outlet connection:	1/2" NPT/NPS (M)	1/2" NPT/NPS (M)

In this part sheet, the words **WARNING**, **CAUTION** and **NOTE** are used to emphasize important safety information as follows:

## **WARNING**

Hazards or unsafe practices which could result in severe personal injury, death or substantial property damage.

## **CAUTION**

Hazards or unsafe practices which could result in minor personal injury, product or property damage.

## **NOTE**

Important installation, operation or maintenance information.

## **WARNING**

### Read the following warnings before using this equipment.



#### READ THE MANUAL

Before operating finishing equipment, read and understand all safety, operation and maintenance information provided in the operation manual.



#### OPERATOR TRAINING

All personnel must be trained before operating finishing equipment.



#### EQUIPMENT MISUSE HAZARD

Equipment misuse can cause the equipment to rupture, malfunction, or start unexpectedly and result in serious injury.



#### LOCK OUT / TAG-OUT

Failure to de-energize, disconnect, lock out and tag-out all power sources before performing equipment maintenance could cause serious injury or death.



#### AUTOMATIC EQUIPMENT

Automatic equipment may start suddenly without warning.



#### PRESSURE RELIEF PROCEDURE

Always follow the pressure relief procedure in the equipment instruction manual.



#### KEEP EQUIPMENT GUARDS IN PLACE

Do not operate the equipment if the safety devices have been removed.



#### KNOW WHERE AND HOW TO SHUT OFF THE EQUIPMENT IN CASE OF AN EMERGENCY



#### WEAR SAFETY GLASSES

Failure to wear safety glasses with side shields could result in serious eye injury or blindness.



#### INSPECT THE EQUIPMENT DAILY

Inspect the equipment for worn or broken parts on a daily basis. Do not operate the equipment if you are uncertain about its condition.



#### NEVER MODIFY THE EQUIPMENT

Do not modify the equipment unless the manufacturer provides written approval.



#### NOISE HAZARD

You may be injured by loud noise. Hearing protection may be required when using this equipment.



#### PROJECTILE HAZARD

You may be injured by venting liquids or gases that are released under pressure, or flying debris.



#### PINCH POINT HAZARD

Moving parts can crush and cut. Pinch points are basically any areas where there are moving parts.



#### STATIC CHARGE

Fluid may develop a static charge that must be dissipated through proper grounding of the equipment, objects to be sprayed and all other electrically conductive objects in the dispensing area. Improper grounding or sparks can cause a hazardous condition and result in fire, explosion or electric shock and other serious injury.



#### WEAR RESPIRATOR

Toxic fumes can cause serious injury or death if inhaled. Wear a respirator as recommended by the fluid and solvent manufacturer's Safety Data Sheet.



#### TOXIC FLUID & FUMES

Hazardous fluid or toxic fumes can cause serious injury or death if splashed in the eyes or on the skin, inhaled, injected or swallowed. LEARN and KNOW the specific hazards or the fluids you are using.



#### FIRE AND EXPLOSION HAZARD

Improper equipment grounding, poor ventilation, open flame or sparks can cause a hazardous condition and result in fire or explosion and serious injury.



#### MEDICAL ALERT

Any injury caused by high pressure liquid can be serious. If you are injured or even suspect an injury:

- Go to an emergency room immediately.
- Tell the doctor you suspect an injection injury.
- Show the doctor this medical information or the medical alert card provided with your airless spray equipment.
- Tell the doctor what kind of fluid you were spraying or dispensing.



#### GET IMMEDIATE MEDICAL ATTENTION

To prevent contact with the fluid, please note the following:

- Never point the gun/valve at anyone or any part of the body.
- Never put hand or fingers over the spray tip.
- Never attempt to stop or deflect fluid leaks with your hand, body, glove or rag.
- Always have the tip guard on the spray gun before spraying.
- Always ensure that the gun trigger safety operates before spraying.

**IT IS THE RESPONSIBILITY OF THE EMPLOYER TO PROVIDE THIS INFORMATION TO THE OPERATOR OF THE EQUIPMENT. FOR FURTHER SAFETY INFORMATION REGARDING THIS EQUIPMENT, SEE THE GENERAL EQUIPMENT SAFETY BOOKLET (77-5300).**

## ⚠ WARNING



**HIGH PRESSURE CAN CAUSE SERIOUS INJURY IF EQUIPMENT IS INSTALLED OR USED INCORRECTLY—READ, UNDERSTAND, AND OBSERVE ALL WARNINGS AND INSTRUCTIONS IN THIS MANUAL.**

**INSTALL, OPERATE OR SERVICE THIS EQUIPMENT ONLY AFTER ALL INSTRUCTIONS ARE CLEARLY UNDERSTOOD.**

**It is the responsibility of the employer to place this information into the hands of the operator.**

### ⚠ WARNING

Hazards or unsafe practices which could result in severe personal injury, death or substantial property damage.

### ⚠ CAUTION

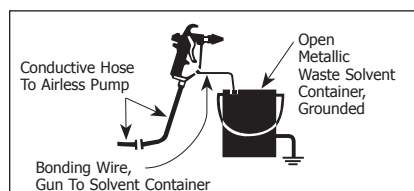
Hazards or unsafe practices which could result in minor personal injury, product or property damage.

### NOTE

Important installation, operation or maintenance information.

### AVOID STATIC SPARKING

1. Use Binks **NO-WIRE** conductive hose in all airless spraying operations. Be sure the gun and hose have continuity.
2. Make sure the pump is grounded. **NEVER** operate the unit when it is on a non-grounded platform.
3. When flushing or cleaning with a combustible solvent, always use an open metallic container for receiving the waste solvent. Ground the solvent receptacle.
4. **ALWAYS** remove spray tip when flushing the system. Operate the pump at the lowest possible pressure.



### GENERAL WARNINGS

1. **NEVER** leave a pressurized sprayer unattended.
2. Periodically inspect all hoses for leaks and/or abrasions and tighten all connections before use. **DO NOT ATTEMPT TO REPAIR** a defective hose. **REPLACE** it with another conductive hose.
3. **ALWAYS** relieve pressure in the system by turning bypass valve to **BYPASS** or triggering spray gun before disassembly of any component parts.

### CAUTION

Never store de-ionized, distilled, reverse osmosis or any pure grade of water in the pump. These fluids may cause corrosion.

### NOTE

**BINKS** is not responsible for misapplication of pumps. Consult your **BINKS** representative for application assistance.

### NOTE

**Be sure that all fluids, solvents and fillers to be used are chemically and physically compatible with wetted parts in the pump. Consult your BINKS representative for pump materials of constructions and compatibility information. Consult the fluid manufacture for information regarding the fluids to be used.**

### REPLACEMENT PARTS

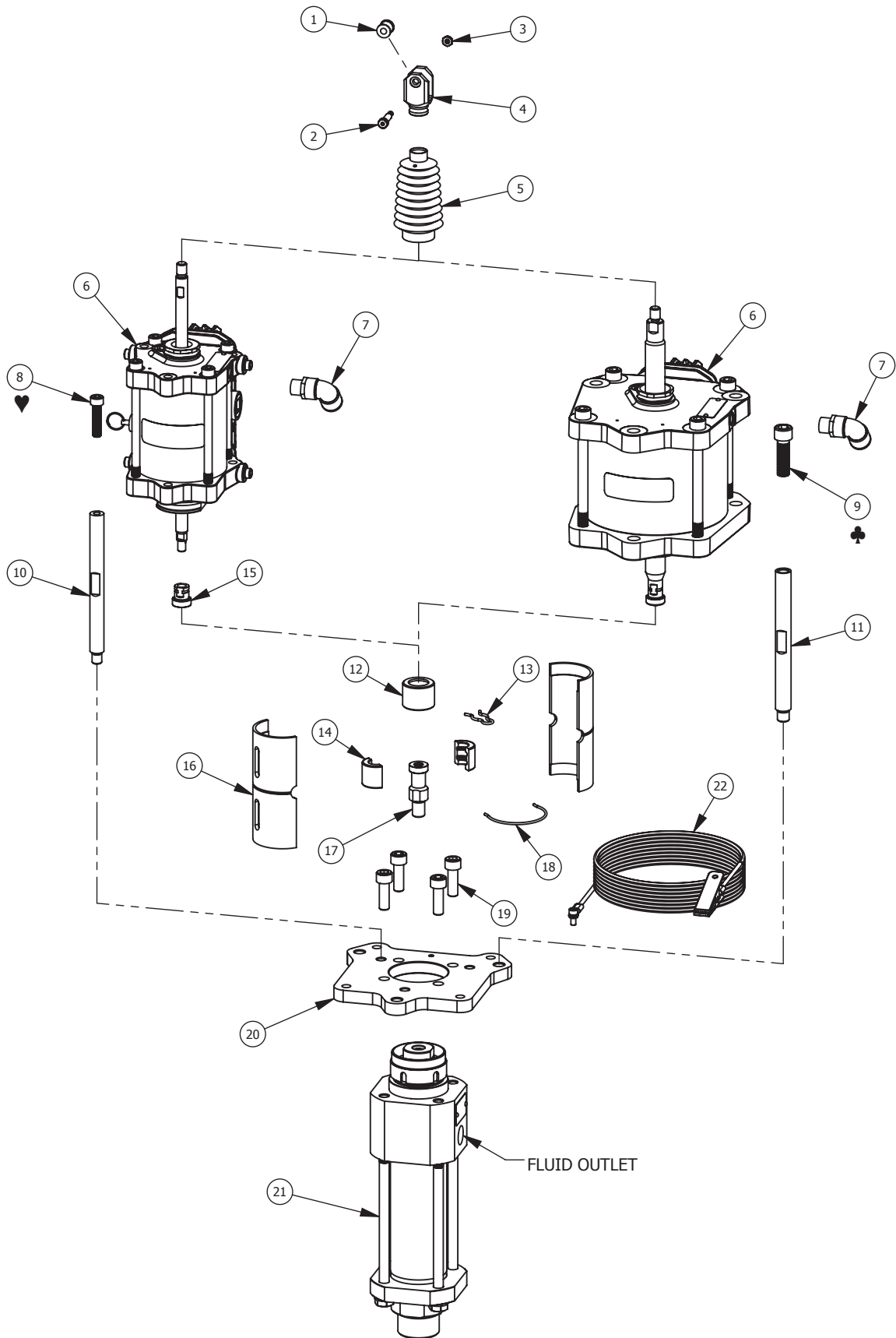
The pump is designed to use authorized parts only. When using this pump with parts that do not comply with the minimum specifications and safety devices of Binks, the user assumes all risks and liabilities.

### ⚠ WARNING

#### EXCESSIVE AIR PRESSURE

Can cause personal injury, pump damage or property damage. Do not exceed maximum inlet air pressure as stated on motor model plate.

MODELS CRX2006 & CRX2017HC CENTURY BARE PUMP ASSEMBLIES



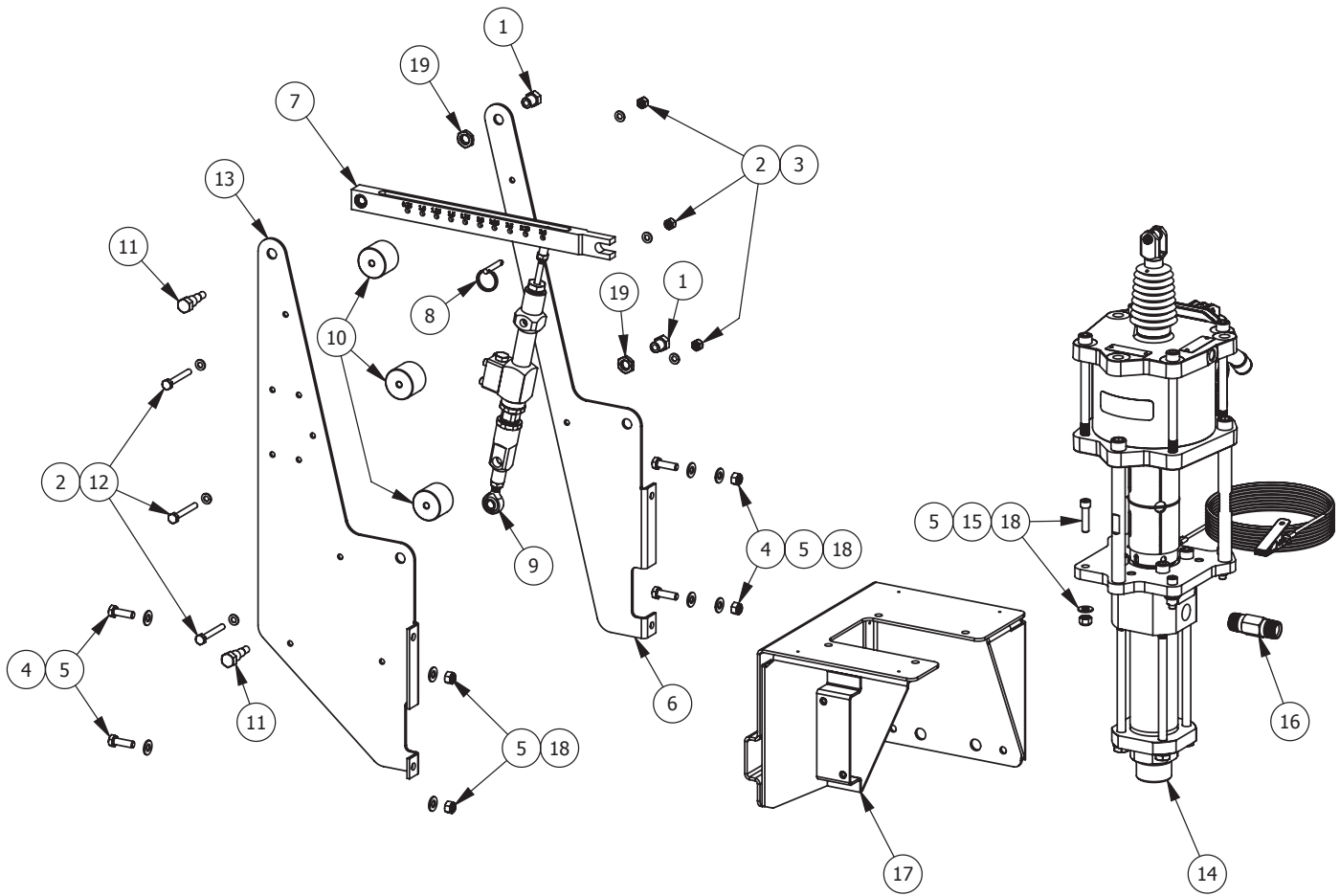
## MODELS CRX2006 & CRX2017HC CENTURY BARE PUMP ASSEMBLIES

ITEM NO.	PART NUMBER	DESCRIPTION	QTY. CRX2006HC	QTY. CRX2017HC	PART SHEET
1	101-9425	BEARING	1	1	
2	20-6869	SHOULDER SCREW	1	1	
3	20-6877	ACORN NUT	1	1	
4	101-9415	CLEVIS	1	1	
5	101-9444	BELLOWS	1	1	
6	AX140SD	AX140SD AIR MOTOR ASSEMBLY	—	1	77-2938
	AX85SD	AX85SD AIR MOTOR ASSEMBLY	1	—	77-2937
7	85-516	SWIVEL ELBOW	1	1	
8	0115-010001 ♥	SOCKET HEAD CAP SCREW	3	—	
9	0115-010114 ♣	SOCKET HEAD CAP SCREW	-	3	
10	101-9414	AX85SD STANDOFF	3	—	
11	101-9423	AX140SD STANDOFF	—	3	
12	101-9422	SPLIT COLLAR SLEEVE	1	1	
13	20-6871	RETAINING CLIP	1	1	
14	101-9421	MOTOR ROD SPLIT COLLAR	1	1	
15	101-9419	AX85 QD ADAPTER	1	-	
16	101-9440	SHROUD	1	1	
17	101-9420	PUMP ROD QD ADAPTER	1	1	
18	101-9439	SHROUD CLIP	1	1	
19	20-6872	SOCKET HEAD CAP SCREW	4	4	
20	101-9449	ADAPTER PLATE	1	1	
21	FRX20HC	FRX20HC FLUID SECTION ASSEMBLY	1	1	77-2939
22	0114-016243	GROUND WIRE KIT	1	1	

♥ Parts are included in 0115-010213 AX85 Hardware Kit.

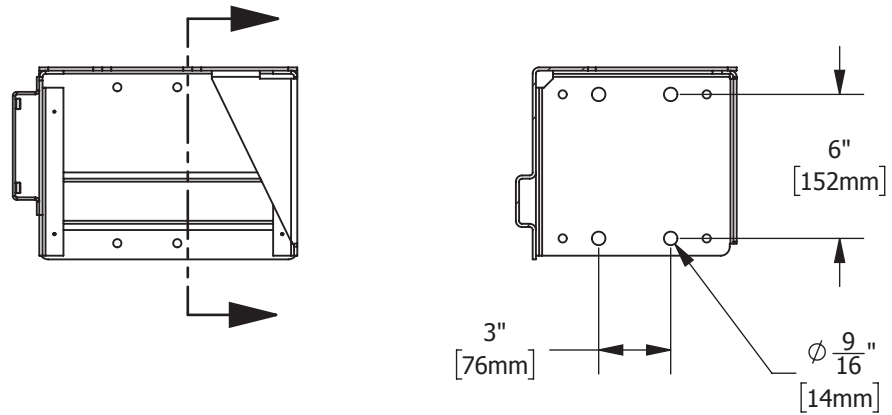
♣ Parts are included in 0115-010300 AX140 Hardware Kit.

**MODELS CX2006HC & CX2017HC CENTURY PUMP ASSEMBLIES**

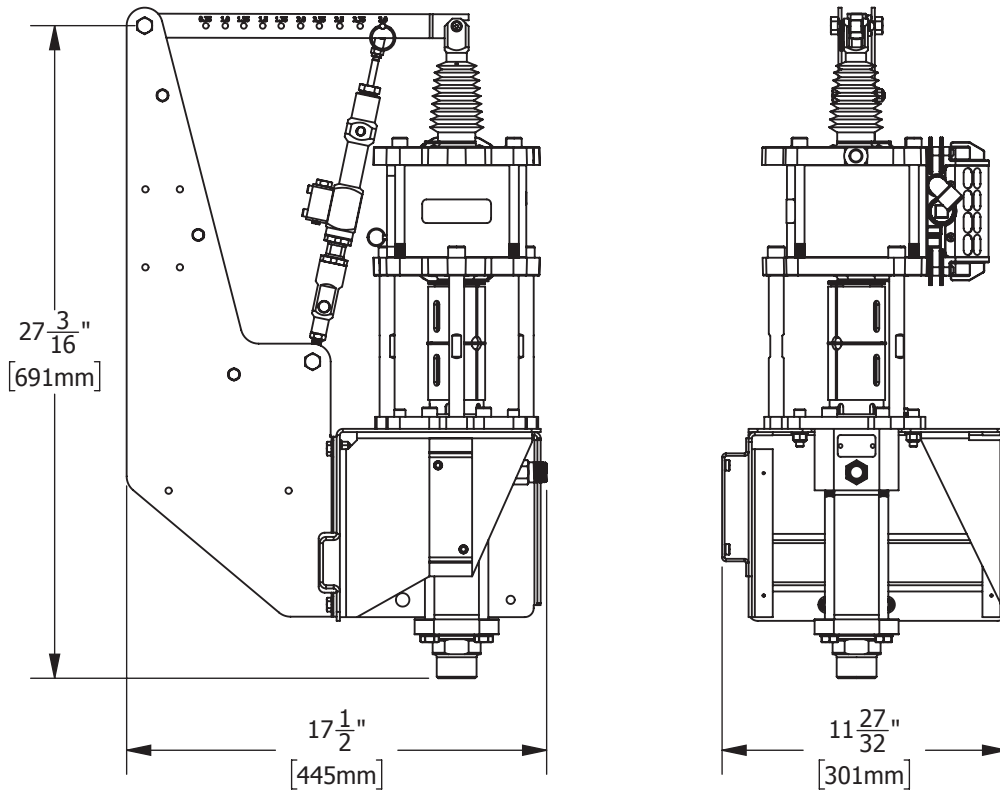


ITEM NO.	PART NUMBER	DESCRIPTION	QTY. CX2006HC	QTY. CX2017HC	PART SHEET
1	101-9433	NUT	2	2	
2	20-263-1	FLAT WASHER	6	6	
3	20-6042	NYLOK HEX NUT	3	3	
4	20-376-1	HEX HEAD CAP SCREW	4	4	
5	20-264-1	FLAT WASHER	12	12	
6	101-9448	REAR CATALYST PUMP BRACKET	1	1	
7	101-9437	RATIO ARM ASSEMBLY	1	1	
8	20-6873	QUICK RELEASE PIN	1	1	
9	101-9450	CATALYST PUMP ASSEMBLY	1	1	77-2943
10	101-9426	SPACER	3	3	
11	101-9427	STUD	2	2	
12	237-176	HEX HEAD CAP SCREW	3	3	
13	101-9447	FRONT CATALYST PUMP BRACKET	1	1	
14	CRX2006HC	AX85SD & FRX20HC BARE PUMP ASSEMBLY	1	—	
	CRX2017HC	AX140SD & FRX20HC BARE PUMP ASSEMBLY	—	1	
15	20-3071-1	ALLEN HEAD CAP SCREW	4	4	
16	72-2337	DM NIPPLE	1	1	
17	101-9446	BRACKET ASSEMBLY	1	1	
18	237-205	NYLOK HEX NUT	8	8	
19	20-6987	JAM NUT	2	2	

**WALL MOUNTING PATTERN**



**CENTURY PUMP DIMENSIONS**



---

## WARRANTY POLICY

This product is covered by Carlisle Fluid Technologies' materials and workmanship limited warranty. The use of any parts or accessories, from a source other than Carlisle Fluid Technologies, will void all warranties. Failure to reasonably follow any maintenance guidance provided may invalidate any warranty.

For specific warranty information please contact Carlisle Fluid Technologies.

Carlisle Fluid Technologies is a global leader in innovative finishing technologies. Carlisle Fluid Technologies reserves the right to modify equipment specifications without prior notice.

DeVilbiss®, Ransburg®, ms®, BGK®, and Binks®  
are registered trademarks of Carlisle Fluid Technologies, Inc.

©2018 Carlisle Fluid Technologies, Inc.  
All rights reserved.

---

For technical assistance or to locate an authorized distributor,  
contact one of our international sales and customer support locations.

<b>Region</b>	<b>Industrial / Automotive</b>	<b>Automotive Refinishing</b>
Americas	Tel: 1-800-992-4657 Fax: 1-888-246-5732	Tel: 1-800-445-3988 Fax: 1-800-445-6643
Europe, Africa, Middle East, India	Tel: +44 (0)1202 571 111 Fax: +44 (0)1202 573 488	
China	Tel: +8621-3373 0108 Fax: +8621-3373 0308	
Japan	Tel: +81 45 785 6421 Fax: +81 45 785 6517	
Australia	Tel: +61 (0) 2 8525 7555 Fax: +61 (0) 2 8525 7575	

For the latest information about our products, visit [www.carlisleleft.com](http://www.carlisleleft.com)