

CertainTeed

*LANDMARK*  
**Solaris**<sup>TM</sup>

Solar Reflective Shingles

FEATURING THE  
GOLD & PLATINUM COLLECTION



Shown in Max Def Heather Blend

**CertainTeed**  
SAINT-GOBAIN



*LANDMARK* Solaris™  
collection

Shown in Aged Cedar

## THE HEAT REFLECTS AWAY, AND YOUR HOME STAYS **COOL**.

Landmark Solaris™ Collection is a brilliant breakthrough that puts cool roof technology to work for you. Plus, our palette of rich, authentic colors makes it an easy choice for eco-friendly living.

The secret is in CertainTeed's advanced roofing granules that reflect solar energy and radiate heat far better than traditional roofing shingles.

# a great reflection on your home and an industry-first!



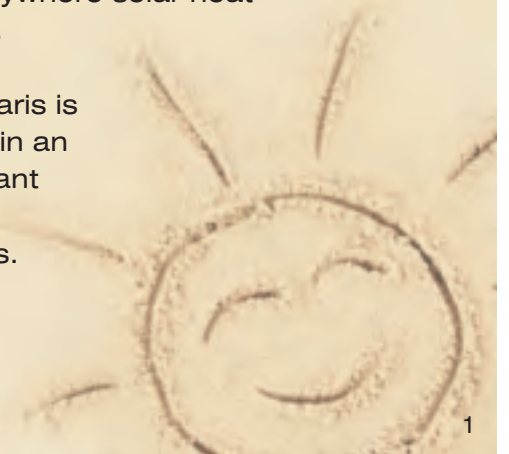
The Landmark Solaris Collection forms a barrier between your roof and the sun that reduces your roof's temperature in the summer.

Choose from three spectacular solar shingle line-ups.

- Landmark Solaris™
- Landmark Solaris™ Gold
- Landmark Solaris™ Platinum - an industry breakthrough in solar reflectivity

The Landmark Solaris Collection is ecologically smart, beautifully durable, and architecturally ideal for sunny climates or anywhere solar heat is a challenge.

Landmark Solaris is also available in an Impact Resistant version in certain regions.



# you don't have to go white to go green

Using cool roofing technology has been recognized as one of the easiest, most cost-effective ways of lowering energy consumption. But until now, going green meant going white.

While white is naturally reflective, Landmark Solaris Collection's innovative technology puts color where white used to be and produces a shingle that reflects solar energy.

That's a green of a different color.

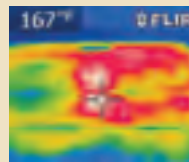
Though light-colored surfaces traditionally have higher reflectance than dark surfaces, Landmark Solaris Collection's cutting-edge design defies traditional thinking by reflecting the sun's energy with style.

Landmark Solaris Platinum takes solar reflective roofing technology to the next level by providing a roof surface that achieves 40% solar reflectivity. This level of solar reflectivity is by far the highest in the asphalt roofing industry and is

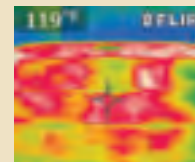
**60%** more reflective

than a standard solar reflective roof surface as defined by ENERGY STAR®. This is important because a 40% solar reflective roof surface can reduce the cooling load two times more effectively than a normal ENERGY STAR rated roof, potentially doubling your energy savings from installing a solar reflective roof.

## Seeing is believing



Landmark Max Def Weathered Wood



Landmark Solaris Max Def Weathered Wood



Landmark Solaris Platinum Coastal Tan

By photographing these roofing shingles under a consistent light and heat source, we can visually see the impact that higher levels of solar reflectance can have on roof temperatures. In the photo on the far left is a standard Landmark laminated shingle in one of the most popular colors sold on the market today, Weathered Wood. Normally, this shingle maintains an SR value of approximately .09 or 9% solar reflectance. In the middle is a Landmark Solaris Gold laminated shingle in Maximum Definition Weathered Wood color. All Landmark Solaris Gold shingles are at least .25 SR or 25% solar reflective. On the right side is a Landmark Solaris Platinum laminate shingle in Coastal Tan color. Landmark Solaris Platinum colors are at least .40 SR or 40% solar reflective.

Less heat at the surface of the roof translates into less opportunity for heat to transfer into the structure below in the same manner as wearing a light colored shirt on a hot summer day typically keeps a person cooler than wearing a black shirt. And less opportunity for heat to transfer into a building can be beneficial in reducing home cooling loads.

## so cool, it's rated for rebates

Landmark Solaris is rated by the Cool Roof Rating Council for cool roofs and meets California's Title 24 requirements for cool steep slope roofing.

Solaris shingles may qualify for credits/points in LEED®, NAHB® and other "green" programs.

And some utility companies offer a rebate for Landmark Solaris that can put as much as \$600 back into a homeowner's pocket for an average 3,000 sq. ft. roof.



Landmark Solaris shingles are ENERGY STAR® qualified roof products that meet both solar reflectance and thermal emissivity requirements.

The Tax Relief, Unemployment Insurance Reauthorization and Job Creation Act of 2010 extends tax credits for energy efficiency into 2011. The new tax credit allows for 10% of the cost of the improvement, up to \$500 for insulation, roofs and doors.

## specifications

- Two-piece laminated fiber glass-based construction
- Classic shades and dimensional appearance of natural wood or slate
- 250 lbs. per square
- UL certified to meet ASTM D3462
- UL certified to meet ASTM D3018 Type 1
- Conforms to CSA Standard A123.5
- Meets ENERGY STAR requirements
- Meets California Title 24 requirements for reflectance and emittance

*For U.S. building code compliance, see product specification sheets.*

## WOW! the metrics speak for themselves

### Landmark Solaris Solar Reflectivity (SR), Thermal Emittance (TE) & Solar Reflective Index (SRI) Data

Solaris Blend Name	CRRC Initial SR	CRRC Initial TE	ASTM E408 TE	Solar Reflective Index (SRI)
<b>LANDMARK SOLARIS</b>				
Aged Cedar	.26	.92	.95	29
Crystal Gray	.27	.92	.95	30
Dusky Clay	.26	.93	.95	29
Sunset Shake	.26	.92	.95	29
<b>LANDMARK SOLARIS GOLD</b>				
Max Def Burnt Sienna	.26	.91	.95	29
Max Def Heather Blend	.26	.93	.96	29
Max Def Resawn Shake	.26	.88	.96	29
Max Def Stonegate Gray	.26	.91	.95	29
Max Def Weathered Wood	.26	.90	.95	29
<b>LANDMARK SOLARIS PLATINUM</b>				
Sierra Buff	.41	.92	.95	48
Coastal Tan	.40	.91	.95	47
Santa Fe	.40	.90	.94	47

## warranty

- Lifetime limited transferable warranty – residential
- 50-year limited transferable warranty – group-owned or commercial
- 10-year SureStart™ protection
- 15-year StreakFighter™ warranty
- 15-year 110 mph wind-resistance warranty
- Wind warranty upgrade to 130 mph available. CertainTeed starter and CertainTeed hip and ridge required

*See actual warranty for specific details and limitations.*



# LANDMARK Solaris™ collection

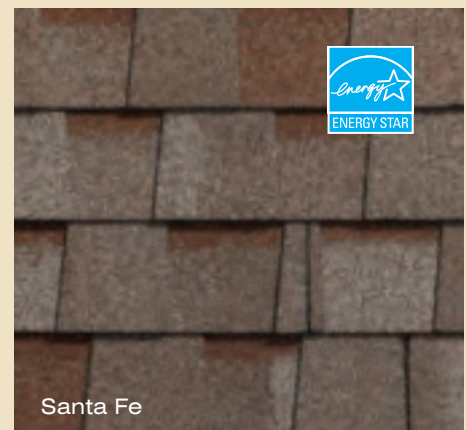
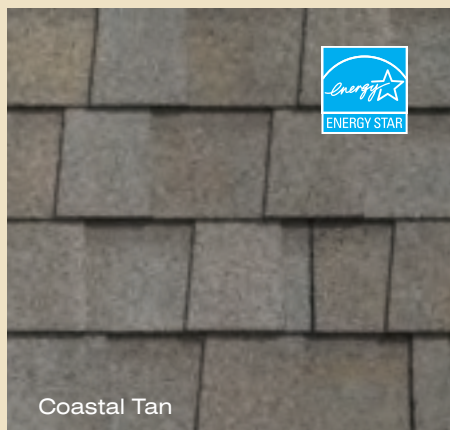
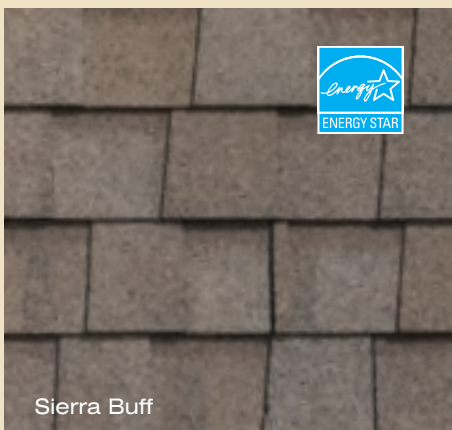
## LANDMARK SOLARIS (Also available in a Class 4 impact resistant version)



## LANDMARK SOLARIS GOLD



## LANDMARK SOLARIS PLATINUM

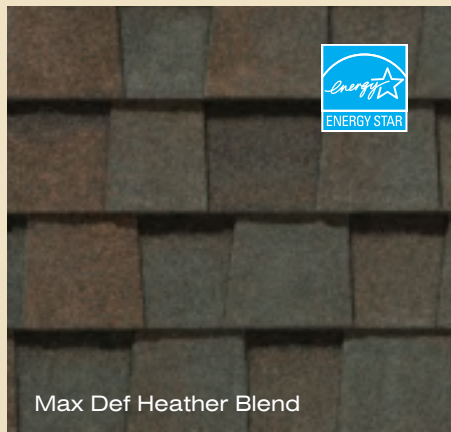


# color palette



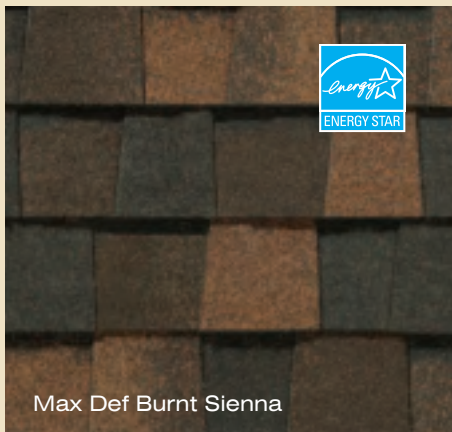
## Landmark Solaris

A subtle color palette featuring soft earth tones.



## Landmark Solaris Gold

Look deeper. With Landmark Solaris Gold, a new dimension is added to shingles with a richer mixture of surface granules. You get a brighter, more vibrant, more dramatic appearance and depth of color. And the natural beauty, authentic color and style shines through.



## Landmark Solaris Platinum

With Landmark Solaris Platinum, you get a fresh, bright color palette but with an industry-leading solar reflectance value of over 40%.



# a quick guide to **eco**-living

## smart. sustainable. Solaris™

CertainTeed's advanced roofing granules reflect sunlight to reduce roof temperatures by lowering energy costs and reducing the "heat island" effect – a cause of smog, impaired water quality, and heat-related illnesses.

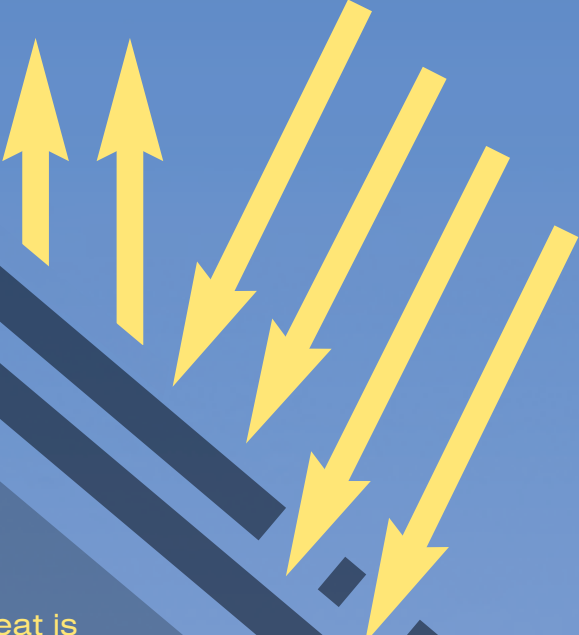
Blending ecological technology and innovative performance, Landmark Solaris™ roofing is more durable than traditional shingles. The reflective technology significantly reduces "thermal shock," the expansion and contraction of exterior building materials.

## cool facts

Solar reflectance and thermal emittance are the two radiative properties used to measure the "coolness" of a roof.

**Solar Reflectance:**  
the fraction of solar energy that is reflected by the roof

**Thermal Emittance:**  
the relative ability of the roof surface to radiate absorbed heat



Some heat is  
absorbed by the roof  
and transferred to the  
building below





## Integrity Roof System™

A systems approach combines high-performance components – underlayments, shingles, accessory products and ventilation – to make the Integrity Roof System a complete roofing solution. When you choose an Integrity Roof System, you gain the advantage of having CertainTeed as your single manufacturing source to stand behind its roof system components.

### Hip & Ridge Accessories

Accessory shingles are used to finish the hips and ridges of the roof and are designed to complement the appearance of CertainTeed shingles.

### CertainTeed Shingles

High-quality shingles available in a wide variety of styles and colors, covered by the strongest warranty in the business. Flintlastic® roll roofing products are also available for flat roof areas.

### Roofers' Select™ or DiamondDeck™

High-performance underlayment provides a protective water-resistant layer over the roof deck and a secondary barrier against leaks.

### WinterGuard™

Waterproofing shingle underlayment prevents leaks from wind-driven rain and ice dams in vulnerable areas.

### SwiftStart Starter Shingles

Starter shingles are designed to work specifically with each different type of CertainTeed shingle for maximum performance.



## Add a little accent to your roof.

CertainTeed offers Solaris hip and ridge accessory and Mountain Ridge accessory products used for capping hips and ridges. They are the perfect finishing touch for your roof, offering blended color, high-profile and low-profile designs.



**CertainTeed**  
SAINT-GOBAIN

# for the home of a lifetime

CertainTeed building products wrap your home in quality - blending performance, energy efficiency, durability and style.

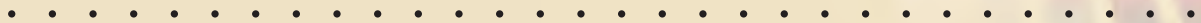
Ask for quality CertainTeed products for all your building and remodeling needs. The choice you make is for the home of a lifetime.

- Roofing
- Siding
- Insulation
- Fence
- Decking
- Railing
- Foundations
- Pipe
- Trim
- Gypsum
- Ceilings

# not sure which color to pick?

## CHECK OUT CERTAINTEED'S COLORVIEW.™

ColorView™ is CertainTeed's interactive tool to help you visualize product style and color options. Using it is easy. Just go to [www.certainteed.com/colorview](http://www.certainteed.com/colorview).



**green & growing.**

We've put green thinking behind our shingle and environmentally sound manufacturing ahead of standard industry practices to produce a product line that is green and growing.

CertainTeed is committed to resource conservation. Our roofing manufacturing facilities recycle close to 90% of the production waste into asphalt materials used for the construction of roads. We also integrate recycled content into many of our packaging needs including corrugated rolls and kraft paper.

They're small steps in a big world. But we're green and growing everyday. It's a commitment we take seriously at CertainTeed.

# easy selection

## What's behind our #1 rating?

Builders and remodelers across America know certain things to be true of CertainTeed. For starters, we've been in the roofing business for over 100 years. We have thousands of satisfied homeowners. The process of building that satisfaction begins the moment you turn to us.

CertainTeed offers you the broadest range of color and style choices. But you'll see it's not style over substance. You'll get a roof that's made from the highest quality materials and backed by a strong warranty program. It's our promise to you: quality made certain, satisfaction guaranteed.

# #1 rating



# long-term protection

## Color Companion Products™

With CertainTeed Flintlastic® SA, you can coordinate flat roof areas like carports, canopies and porches with your main roof. Flintlastic SA is a self-adhering low slope roofing product available in eight colors that match some of the most popular CertainTeed shingles. Ask your contractor for more information.

*NOTE: Due to limitations of printing reproduction, CertainTeed can not guarantee the identical match of the actual product color to the graphic representations throughout this publication.*



## Reaching for the ENERGY STARS.

As a 2011 ENERGY STAR Sustained Excellence

recipient for Energy Management, we are proud of our commitment to designing high quality, sustainable roofing products.

## ASK ABOUT ALL OF OUR OTHER CERTAINTEED® PRODUCTS AND SYSTEMS:

ROOFING • SIDING • TRIM • DECKING • RAILING • FENCE • FOUNDATIONS  
GYPSUM • CEILINGS • INSULATION • PIPE

[www.certainteed.com](http://www.certainteed.com) <http://blog.certainteed.com>

CertainTeed Corporation  
P.O. Box 860  
Valley Forge, PA 19482

Professional: 800-233-8990  
Consumer: 800-782-8777

