

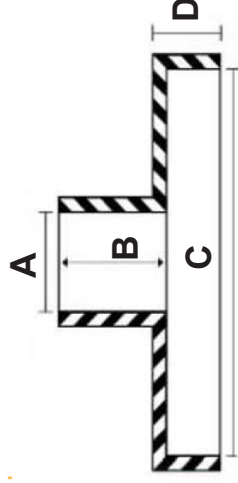


**PIGNONI PER MOTOSEGHE
CHAINSAW SPROCKETS**



ADATTABILI alle seguenti marche

Fit the following brands



	Passo Pitch	Denti Teeth	Articolo		A	B	C	D
			Rocchetto FISSO SPUR SPROCKET	CON ANELLI RIM SPROCKET				
ALPINA	325"	7	54.230.0681	54.230.0600	15,9	12,8	69,0	15,7
	3/8"	7			15,9	12,8	69,0	15,7
35, 40; 330, 380, 432, 438, 482	3/8" LP	6	54.230.0684		13,0	11,2	57,2	14,0
400, P402, P420, P422, P450, P460, P462, P472, P482, P500, P510, P522	325"	7	54.230.0524	54.230.0605	14,0	13,1	68,7	9,4
070, A70, A90, CP90, CP120	3/8"	8	54.230.0682		19,0	XXXX	79,0	XXXX
P34, P350, P360, P361, P371, P390, P391, P411	3/8" LP	6	54.230.0440		14,0	11,0	57,2	13,7
	325"	7	54.230.0870		14,0	11,0	57,2	13,7
PR270, PR280	3/8" LP	6	54.230.0871					
P760, 700, 800	3/8"	7	54.230.0525	54.230.0601	16,0	12,1	78,8	16,0
CP55, CP56, CP65, CP66	3/8"	7	54.230.0683					



**PIGNONI PER MOTOSEGHE
CHAINSAW SPROCKETS**

ECHO	Articolo		A	B	C	D
	Passo Pitch	Denti Teeth				
CS270, CS280, CS290, CS300, CS2900, CS2800, CS328,	3/8" LP 1/4"	6 8	CON ANELLI RIM SPROCKET	11,0 11,0	12,0 12,0	59,8 59,8
CS302, CS310, CS315, CS330, CS351, CS360	3/8" LP 1/4"	6 8		11,0 11,0	10,9 10,9	70,0 70,0
CS 400, CS420, CS440, CS3600, CS3700, CS3900, CS4100, CS4200, CS4400, CS4510, CS4600,	3/8" 3/8"	7 7	54.230.0754	14,0 14,0	10,6 10,6	70,0 70,0
CS450, CS451, CS451VL, CS452, CS500, CS550, CS600, CS610,	3/8"	7	54.230.0602	14,0	12,8	77,5
CS60, CS60S, CS605	3/8"	7		17,0	13,6	70,0
CS602VL, CS702VL, CS750VL,	3/8" 404"	7 7	54.230.0603 54.230.0604	14,0 14,0	12,7 12,7	77,7 77,7
CS4000, CS4010, CS4500, CS4600, CS4601, CS5000, CS5200, CS5500	3/8"	7		15,0	12,8	69,8
CS6700, CS6701, CS6702, CS6703, CS6680	3/8"	7	54.230.0872 54.230.0873	18,0	12,9	77,7
CS8000, CS8001, CS8002	3/8"	7	54.230.0874			
CS-3000, CS3350, CS-3400, CS340, CS341, CS3450, CS346, CS3500, CS3050, CS320T, CS350T,	3/8" LP 1/4"	6 8		13,0 13,0	13,5 13,5	60,0 60,0
CS2600, CS2600ES, CS260T, CS2700, CS270, CS320T, CS350T, CS350W	3/8" LP 1/4"	6 8	54.230.0875 54.230.0876	13,0 13,0	13,4 13,4	54,0 54,0
CS5000, CS5501, CS5100	3/8"	7	54.230.0877			



**PIGNONI PER MOTOSEGHE
CHAINSAW SPROCKETS**



ADATTABILI alle seguenti marche

Fit the following brands

HOMELITE

	Passo Pitch	Denti Teeth	Articolo Rocchetto FISSO SPUR SPROCKET	Articolo CON ANELLI RIM SPROCKET				
					Ø Foro Bore Ø	Lungh. Foro Bore Length	Ø int Drum Ø	Alt. campà Drum Depth
190, XL MINI, SXL MINI AO, XL101, XL, XL2, XEL, SUPER 2 VI SUPER 2, SUPER 200, Bandit LX30, Sabre 31, 33, 200	3/8" LP	6	54.230.0697		14,1	12,8	61,8	16,4
150AO, EZ250AO, XL MINI, 101, VI 123, XL76, EZ, EX AUTO, SEZ. AO, SXL MINI AO, 330, 350, 360, 410	3/8"	7	54.230.0696		19,0	13,0	68,3	16,9 / 16,5
330, 360, 410, XL76, XL100, XL102, XL103, XL104, XL 112, XL114, XL122, XL123, V1123, V1125,	3/8"	7	54.230.0694	54.230.0617	19,0	13,0	76,0	17,0
XL12, XL AUTO, SUPER XL, 450, 450W, 450HG, 450SL, 550, XL800, XL850, XL870, XL875, XL901, XL903, XL904, XL913, XL914, XL922, XL924, VI 944, VI955, SUPER XL925 (dopo il n.ro / after series 1735838)	3/8" 404"	7	54.230.0801 54.230.0806	54.230.0616	19,0	13,3	79,0	18,5
600, 650, 750, C-72, ZIP, XP1000, XP1100, XP1020, C5, C7, C9, C51, C71, C91, EZ6, 700D, 707D, 770D, 755D	3/8	8	54.230.0691					
20, 23, D3300, 3350, 3800, 3850, 3314, 3316, D4150B, D4550B	3/8 LP	6	54.230.0698					
110 ELECTRIC	3/8 LP	6	54.230.0594					
XL-MINI, SXL-MINI, AL-10 fino a Settembre 1969 - up to Sept. 1969	3/8"	7	54.230.0693					
240, 245	3/8" LP	6	54.230.0695					
EZ, EZ6, 7-19, 7-19C, 700D, 707D, 770D, 775D, ZIP, SUPER ZIP, C5, C51, C71, C72, C9, C91, XP1000, XP1020, XP1100, 2150	3/8"	8	54.230.0692					

I ricambi illustrati su questo catalogo sono ADATTABILI. Le marche ed i modelli originali sono citati SOLO a titolo indicativo
Non-genuine parts. O.E.M. brands and O.E.M. models are given for reference only



**PIGNONI PER MOTOSEGHE
CHAINSAW SPROCKETS**

HUSQVARNA

	Articolo		Articolo		A	B		C		D	
	Passo Pitch	Denti Teeth	Rocchetto FISSO SPUR SPROCKET	Articolo	CON ANELLI RIM SPROCKET	Ø Foro Bore Ø	Lungh. Foro Bore Length	Ø int Drum Ø	Alt.ampa Drum Depth		
40, 45, 49	325"	7			54.230.0610	15,9	13,10	63,7	15,6		
39, 44, 140, 235, 240P, 444	325"	7			54.230.0613	15,9	12,90	69,0	16,2		
61, 66, 162, 222, 266, 268, 272, RANCHER 61	3/8" 3/8"	7 8	54.230.0512 54.230.0687		54.230.0612	16,7 16,7	12,7 12,7	78,6 78,6	16,7 16,7		
65, 77, 160, 165, 180, 260, 263, 280, 380, 480	3/8"	7	54.230.0511		54.230.0611	17,4	15,0	78,8	17,7		
181, 185, 281, 288, 285, 298, 1100, 2100, 2101, 394, 395, 395XP	3/8 404"	8 7	54.230.0809 54.230.0810			17,4 17,4	15,7 15,7	78,6 78,6	17,6 17,6		
42, 242, 246 (prima del n.ro / before series 344-1001)	325"	7			54.230.0625	15,9	12,9	63,6	14,7		
42, 242, 246 (dopo il n.ro / after series 344-1001)	325"	7			54.230.0626						
254 (dopo il numero / after series 345-0001)	3/8"	7			54.230.0614	15,9	12,9	69,0	15,8		
257 (dopo il numero / after series 314-0001)	325"	7			54.230.0608	15,9	12,9	69,0	15,8		
262 (dopo il numero / after series 345-0001)											
340, 345, 346XP, 350, 351, 353 scanalatura PICCOLA (small spline)	325"	7	54.230.0807		54.230.0808	15,9	13,4	69,0	14,3		
355, 357XP, 359, 359EP scanalatura STANDARD (standard spline)	3/8"	7	54.230.0878			15,9	14,4	69,0	14,6		
50, 51, 55, 154, 254, 262, 257	325" 3/8"	7 7	54.230.0681		54.230.0600	15,9 15,9	12,8 12,8	69,0 69,0	15,7 15,7		
33, 34, 35, 37, 38	3/8" LP	6	54.230.0594			13,0	12,2	58,7	13,8		
36, 41, 136, 141, 142	325"	7	54.230.0803		54.230.0609	14,0	12,7	63,5	16,4		
362, 365, 371, 372XP, 570, 575XP, 385	3/8" 325"	7 7	54.230.0799 54.230.0879		54.230.0770						
334T, 335, 336, 338XPT, 339	3/8" LP	6	54.230.0582								



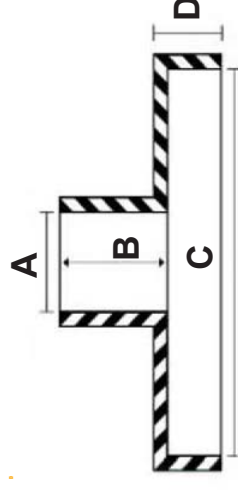
**PIGNONI PER MOTOSEGHE
CHAINSAW SPROCKETS**



ADATTABILI alle seguenti marche

Fit the following brands

	Passo Pitch	Denti Teeth	Articolo Rocchetto FISSO SPUR SPROCKET	Articolo CON ANELLI RIM SPROCKET	A B C D			
					Ø Foro Bore Ø	Lungh. Foro Bore Length	Ø int Drum Ø	Alt. camp. Drum Depth
45, 49, 50, 51, 52, 451, 452, 521	3/8" 325"	7 8	54.230.0564 54.230.0813		15,9	14,10	74,4	16,3
410, 420, 425, 435, 2041, 2045, 2050,	325"	7	54.230.0880					
450, 455, 510, 520, 525, 535, 2044,	325"	7	54.230.0545	54.230.0774	16,0	14,0	63,5	16,0
2051, 2052, 2054, 2055	325" 3/8"	8 7	54.230.0811	54.230.0775 54.230.0622				
60, 61, 62, 66, 70, 601, 621	3/8"	8	54.230.0565		19,0	16,9	74,0	17,0
75, 80, 81, 90, 751, 801, 910	3/8" 404"	8 8	54.230.0522 54.230.0802		19,0 19,0	16,8 16,8	79,1 79,1	16,0 16,0
820, 830, 920, 930	325" 3/8"	7 8	54.230.0881 54.230.0814		18,0	14,7	88,8	18,0
2063, 2065, 2071*, 2165, 2171, 2186 * necessita di distanziale (needs spacer)	3/8" 325	7 7	54.230.0799 54.230.0879		16,0 16,0	13,8 13,8	78,6 78,6	17,9 17,9
2077, 2083	3/8"	7		54.230.0630	16,0	13,2	78,7	17,6
36, 361AV, 365, 370, 380	3/8" LP	6	54.230.0594		13,0	12,2	58,7	13,8
625, 630, 670,	3/8" 3/8"	7 8	54.230.0512 54.230.0687	54.230.0612	16,7	12,7	78,6	16,7
2035, 2036, 2040, 2137	3/8" LP 325"	6 7	54.230.0821 54.230.0803	54.230.0609	14,0 14,0	12,7 12,6	63,5 63,7	16,4 16,8





**PIGNONI PER MOTOSEGHE
CHAINSAW SPROCKETS**



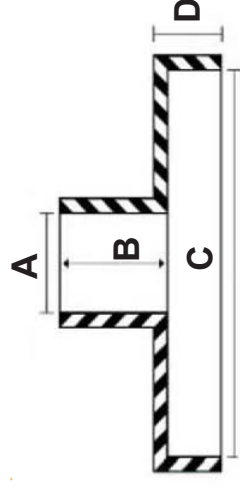
JONSERED	Articolo		A	B	C	D	Alt. camp Drum Depth
	Passo Pitch	Denti Teeth					
490, 590	325" 325"	7 8	54.230.0681 54.230.0763	15,9	12,8	69,0	15,7
2141, 2145, 2149, 2150, 2151, 2152, 2153, 2156, 2159, 2245, 2250	325"	7	54.230.0807	15,9	13,4	69,0	14,3
2045, 2050, 2063, 2041	325"	7	54.230.0610	15,9	12,9/13,10	63,6/63,7	15,6/15,5
CS2186, CS2188	3/8"	7	54.230.0799				
McCULLOCH							
TITAN 50, 57, 70, DOUBLE EAGLE 50	325"	8	54.230.0781				
MINI-MAC 6, 25, 30, 35, MAC6 110-140, 3214, 3216, 3516, 3818, MAC 310-340, PM 360, PM 364, PM 370, PM 374, PM 390, PM 470, PM 480, PM 484, PM 490, PM 4040, MAC 730-740, EUROMAC S30, S33, S34, S35, S36, S38, S39, S40, S41, MAC 832, 833, 835, 836, 838, TITAN 35-40, CALIFORNIA 3500, 4000, 90, MAC 930-940	3/8" LP	6	54.230.0670	14,0	12,1	70,0	15
COME SOPRA MA SENZA FRENOCATENA AS STATED ABOVE BUT WITHOUT CHAIN BRAKE	1/4"	8	54.230.0671				
Promac55, PM60, SP-60, CP-60, CP-70, 1-10, 2-10, MAC3-10, MAC4-10, MAC5-10, MAC6-10, MAC7-10, 10-10, 610, 650, PM750, PM655, PM700, PM800, 850, CP-80, DP-81, SP-81E	3/8"	7	54.230.0816	15,9	12,9	84,8	21,2



**PIGNONI PER MOTOSEGHE
CHAINSAW SPROCKETS**

ADATTABILI alle seguenti marche

Fit the following brands



	Passo Pitch	Denti Teeth	Articolo Rocchetto FISSO SPUR SPROCKET	Articolo CON ANELLI RIM SPROCKET	A B C D				
					Ø Foro Bore Ø	Lungh. Foro Bore Length	Ø int Drum Ø	Alt. camp Drum Depth	
DCS33, DCS341, DCS340, DCS400, DCS401	3/8" LP	6	54.230.0535		14,0	12,0			
DCS6000i, DCS6800i	3/8" 325"	7 8	54.230.0539 54.230.0540	54.230.0652					
DCS5200, DCS520i, DCS43, DCS430, DCS4300	3/8 LP 325" 325"	6 7 8	54.230.0883	54.230.0884 54.230.0783	15,0 15,0 15,0	13,0 13,0 13,0	75,20 75,20 75,20	14,20 14,20 14,20	
PS34	3/8 LP	6	54.230.0885						
OLEO MAC - EFCO - EMAK									
233, 234, 240, 241, 244, 340	325" 3/8" LP	7 6	54.230.0685 54.230.0686		14,0 14,0	12,2 12,2	58,6 58,6	16,20 16,20	
250, 250A, 250 AS, 251, SUPER 251, 350, 355 264 DELUXE • frizione conica foro Ø 15 mm •	3/8" 325"	7 8	54.230.0505 54.230.0818		15,0 15,0	14,0 14,0	68,2 68,2	18,00 18,00	
260, 261, 271, 272, 280, 281, 284, 400, 460, 461, 480, 481, 484	3/8" 404"	8 7	54.230.0522 54.230.0802	oooooooooooo oooooooooooo					
350 Vecchio tipo (old type)	3/8"	7	54.230.0451	oooooooooooo	14,0	14,2	68,2	17,4	
931, 932, 131, 132	3/8 LP	6	54.230.0860	oooooooooooo					



**PIGNONI PER MOTOSEGHE
CHAINSAW SPROCKETS**

OLEO MAC - EFCO - EMAK	Passo Pitch	Denti Teeth	Articolo Rocchetto FISSO SPUR SPROCKET	Articolo CON ANELLI RIM SPROCKET	A Ø Foro Bore Ø	B Lungh. Foro Bore Length	C Ø int Drum Ø	D Alt. camp Drum Depth
930, 935, 134, 135, 114E, 116E, 136, 140	3/8" LP	6	54.230.0546	oooooooooooooooo	13,0	13,8	63,6	17,5
936, 940	3/8" LP	6	54.230.0886	oooooooooooooooo	15,0	14,1	63,4	14,9
938, 941, 942, 945, 946, 947, 950, 951 138, 141, 142, 146, 151, 156, 162	325"	7	54.230.0450	oooooooooooooooo				
PARTNER								
MINI P, MINI P2, MINI P3, MINI P4, MINI PA, MINI 22, 330, 350, 1612, 1613, 1614, 1616	3/8" LP	6	54.230.0594	oooooooooooooooo	13,0	12,2	58,7	13,8
HOMEOWNER 400, 500, 5000, P48, P49 V, P5000	325" 325"	7 8	54.230.0681 oooooooooooooooo	oooooooooooooooo 54.230.0763	15,9 15,9	12,8 12,8	69,0 69,0	15,7 15,7
R-16, R-17, R-18, R-19, R-20, R-21, R-22, R-24O, R-420, R-421T, F55, F65, P70, 417, 517, S50, S55, S65, 700	3/8"	7	54.230.0771	54.230.0641	18,0	16,2	74,0	17,8
R-30, R-35, R-40, R-435, R-440, P18, P85, P1900	3/8"	7	oooooooooooooooo	54.230.0643				
350, 351, 365, 405, P35XT, PH-18XT, P4-20XT, Formula 60	325" 3/8 LP	7 6	54.230.0803 54.230.0821	54.230.0609 oooooooooooooooo	14,0 14,0	12,7 12,7	63,5 63,5	16,4 16,4
PIONEER								
HOLIDAY II, P20, P21, P25, P26, P28, 970, 1072, 1073, 1074, 2071, 2073,	3/8"	7	54.230.0590	oooooooooooooooo				
P10, P12	3/8" LP	6	54.230.0594	oooooooooooooooo				



**PIGNONI PER MOTOSEGHE
CHAINSAW SPROCKETS**

ADATTABILI alle seguenti marche

Fit the following brands

POULAN	Passo Pitch	Denti Teeth	Articolo Rocchetto FISSO SPUR SPROCKET	Articolo CON ANELLI RIM SPROCKET				
					Ø Foro Bore Ø	Lungh. Foro Bore Length	Ø int Drum Ø	Alt. camp Drum Depth
20, MICRO 25, 180, 205, 225, 235, 1800, 2000, 2100, 2300, 2400	3/8" LP 1/4	6 8	54.230.0690 54.230.0822	oooooooooooo oooooooooooo	13,5	13,2	63,5	14,10
285, 305, 330, 335, 336, 2700, 2800, 3000, 3300	3/8"	7	54.230.0823	oooooooooooo	15,9	13,2	68,1	17,6
20, MICRO 25, 180, 205, 225, 235, 1800, 2000, 2100, 2300, 2400	3/8 LP	6	54.230.0690	oooooooooooo	13,5	13,2	63,5	14,1
25, 25A, 25CVA, 25DA	3/8 LP	6	54.230.0688	oooooooooooo	14,3	14,3	68,3	14,4
325	3/8"	7	54.230.0681	oooooooooooo				
5500, 6000	3/8"	8	54.230.0533	oooooooooooo	21,0	16,6	83,0	21,10
SUPER 6000	3/8"	8	54.230.0541	oooooooooooo				
255, P600, 2275, 2500, 2600, 2700, 2750, 2775, 2900, 3050, PP210, PP295, PP3616, PP3816, PP4018, PP4618, WOODSHARK	3/8" LP	6	54.230.0821	oooooooooooo	14,0	12,7	63,5	16,40



**PIGNONI PER MOTOSEGHE
CHAINSAW SPROCKETS**



	SACHS DOLMAR	Passo Denti Pitch Teeth		Articolo	Articolo	A B		C D	
				Rocchetto FISSO SPIUR SPROCKET	CON ANELLI RIM SPROCKET	Ø Foro Bore Ø	Lungh. Foro Bore Length	Ø int Drum Ø	Alt. camp Drum Depth
103, 105, 108		325" 3/8" LP	8 7	54.230.0537 54.230.0538	°°°°°°°°°°°°°° °°°°°°°°°°°°°°	12.0 12.0	12.7 12.7	70.2 70.2	14.6 14.6
104, 106		3/8" LP	6	54.230.0688	°°°°°°°°°°°°°°				
109, 110, 111, 115, PS43, 51, PS52, PS540 DCS5200, DCS520i, DCS43, DCS430, DCS4300		3/8 LP 325" 325"	6 7 8	54.230.0883 °°°°°°°°°°°°°° °°°°°°°°°°°°°°	°°°°°°°°°°°°°° 54.230.0884 54.230.0783	15.0 15.0 15.0	13.0 13.0 13.0	75.2 75.2 75.2	14.2 14.2 14.2
112, 113, 114, 116, 117, 119, 120, 120 SUPER DCS6000i, DCS6800i		325" 3/8"	8 7	54.230.0540 54.230.0539	°°°°°°°°°°°°°° 54.230.0652	18.0	14.3	76.0	15
CA, 122, 122SL, 123, 133, PS9010, 143, CA113		3/8"	8	54.230.0531	°°°°°°°°°°°°°°	18.0	14.1	69.5	20.4
CC, SUPER CC, CX, 144, 152		3/8"	8	54.230.0533	°°°°°°°°°°°°°°	18.0	16.6	83.0	21.0
152S, 153, 163, 166		3/8" 404"	8 8	54.230.0541 54.230.0542	°°°°°°°°°°°°°° °°°°°°°°°°°°°°				
PS33, 100, 102, 340, 341, 342, 344, 400, 401, 410, PS411, 350		3/8" LP 325	6 7	54.230.0535 54.230.0536	°°°°°°°°°°°°°° °°°°°°°°°°°°°°	14.0 14.0	12.0 12.0	70.0 70.0	13.6 13.6
PS34		3/8 LP	6	54.230.0885					
290E		3/8 LP	6	54.230.0594	°°°°°°°°°°°°°°				
6000, 6800		3/8	7	54.230.0882	°°°°°°°°°°°°°°	18.0	14.3	73.5	15.0

I ricambi illustrati su questo catalogo sono ADATTABILI. Le marche ed i modelli originali sono citati SOLO a titolo indicativo
Non-genuine parts. O.E.M. brands and O.E.M. models are given for reference only



**PIGNONI PER MOTOSEGHE
CHAINSAW SPROCKETS**

ADATTABILI alle seguenti marche

Fit the following brands

SHINDAIWA

Passo Denti
Pitch Teeth

305, 340, 345, 350, 352, 355, 415, 450, 500

405, 406, 407, 410, 415, 416, 450, 451, 480, 485, 500

285, 300, 357, 360, 377, 394

400

488, 575, 577, 580, 680, 685, 695,

SOLO

616, 647, 654,

650, 660, 620, 655

Articolo
Rocchetto FISSO
SPUR SPROCKET



Articolo
CON ANELLI
RIM SPROCKET



A B C D
Ø Foro Lung'h. Foro **Ø int** **Alt.ampa**
Bore \varnothing Bore Length Drum \varnothing Drum Depth

13.0 16.5 68.2 17.3

13.0 16.5 68.2 17.3

13.0 17.8 67.7 16.7

13.0 17.8 67.7 16.7

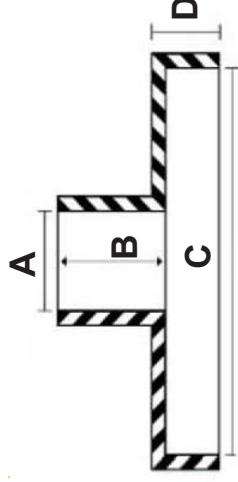
13.0 17.0 68.2 16.9

13.0 12.8 71.9 16.0

15.0 15.5 70.0 16.7

15.0 15.5 70.0 16.7

18.0 14.9 70.0 17.0





**PIGNONI PER MOTOSEGHE
CHAINSAW SPROCKETS**



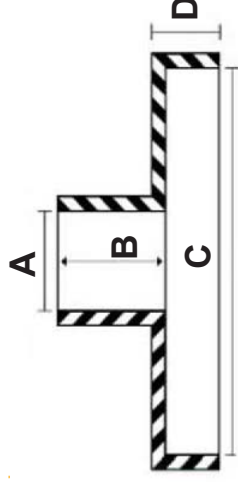
	SOLO	Passo Denti Pitch Teeth		Articolo Rocchetto FISSO SPIUR SPROCKET		Articolo CON ANELLI RIM SPROCKET		A B C D Ø Foro Lunggh. Foro Ø int Alt. campà Bore Length Drum Ø Drum Depth	
		603, 670, 680, 681, 690, 694	3/8" 7 404" 7	54.230.0833 54.230.0834	oooooooooooo oooooooooooo	18.0 17.5 89.0 20.7 18.0 17.5 89.0 20.7			
600, 605, 606, 631 (Ø campana - drum Ø = 60 mm)	3/8" LP 6	54.230.0835	oooooooooooo	14.0 13.5 65.8 18.4					
605, 606, 632, 634, 638, 641 (Ø campana - drum Ø = 58 mm)	3/8" LP 6 325" 7	54.230.0836 54.230.0837	oooooooooooo oooooooooooo	14.0 14.2 58.6 16.7 14.0 14.2 58.6 16.7					
662, 667	3/8" 7	54.230.0838	oooooooooooo	18.0 15.1 70.0 15.9					
639, 644, 645, 650, 651	325" 7	54.230.0839	oooooooooooo	13.0 13.6 70.0 18.4					
STIHL									
009, 010, 011, 012	3/8" LP 6 1/4" 8	54.230.0840 54.230.0841	oooooooooooo oooooooooooo	13.0 13.2 66.0 16.0 13.0 13.2 66.0 16.0					
015, 015L	3/8" LP 6 1/4" 8	54.230.0843 54.230.0844	oooooooooooo oooooooooooo	13.0 15.4 66.2 16.9 13.0 15.4 66.2 16.9					
017, 018, 019T, 021, 023, 025, MS170, MS180, MS190T, MS191T, MS192, MS210, MS230, MS250	3/8" LP 6 325" 7	54.230.0842 oooooooooooo	oooooooooooo 54.230.0658	13.0 11.5 66.0 17.8 13.0 11.5 66.0 17.8					
020 AV, 020 AVE, 020 AV Super	3/8" LP 6	54.230.0845	oooooooooooo						



**PIGNONI PER MOTOSEGHE
CHAINSAW SPROCKETS**

ADATTABILI alle seguenti marche

Fit the following brands



	Passo Pitch	Denti Teeth	Articolo Rocchetto FISSO SPUR SPROCKET	Articolo CON ANELLI RIM SPROCKET	A B C D			
					Ø Foro Bore Ø	Lungh. Foro Bore Length	Ø int Drum Ø	Alt. campa Drum Depth
MS192T, MS200T, 020T, MS200	3/8 LP	6	54.230.0887	oooooooooooo	13.0	13.0	66.4	12.8
	1/4	8	54.230.0888	oooooooooooo	13.0	13.0	66.4	12.8
024, 026 prima del (before no.) X25809074	325"	7	54.230.0562	oooooooooooo	13.0	11.2	69.0	13.7
024, 026 pompa olio regolabile (adjustable oiler) MS240, MS260, MS270, MS280, MS281	325"	7	54.230.0867	oooooooooooo	13.0	11.2	69.0	17.7
	3/8"	7	54.230.0889	oooooooooooo	13.0	11.2	69.0	17.7
028	325"	7	54.230.0554	oooooooooooo	13.0	24.2	69.0	16.2
029, 034, 036, 039 MS360, MS361, MS290, MS310	3/8"	7	54.230.0561	oooooooooooo	13.0	11.7	75.9	20.3
	3/8"	7	54.230.0557	54.230.0665	15.0	16.4	69.0	18.9
030, 031, 032, 040, 041, MS310	404"	7	54.230.0849	oooooooooooo	15.0	16.4	69.0	18.9
	3/8"	7	54.230.0850	oooooooooooo	13.0	24.2	69.0	16.2
038, MS380, MS381	3/8"	7	54.230.0850	oooooooooooo	13.0	24.2	69.0	16.2
041AV, 041AVE prima del nr (before no.) 5664891	3/8"	7	oooooooooooo	54.230.0631				



**PIGNONI PER MOTOSEGHE
CHAINSAW SPROCKETS**


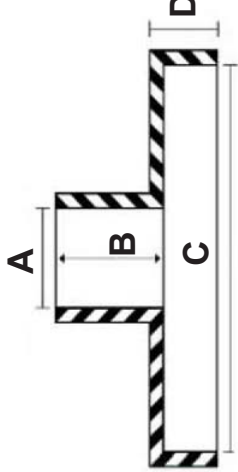
	Passo Pitch	Denti Teeth	Articolo Rocchetto FISSO SPUR SPROCKET	Articolo CON ANELLI RIM SPROCKET	A		B		C		D	
					Ø Foro Bore Ø	Lungh. Foro Bore Length	Ø int Drum Ø	Alt. camp Drum Depth				
STIHL												
042AV, 048AV,	3/8"	7	54.230.0555	oooooooooooo	16.0	23.9	75.8	20.7				
044, 046, MS440, MS441, MS460	3/8"	7	54.230.0851	oooooooooooo	16.0	11.7	76.0	18.1				
045AV, 045AVE, 045AVEQ, 056	3/8"	7	54.230.0580 oooooooooooo	oooooooooooo	17.0	17.5	77.5	23.1				
	3/8"	8	54.230.0792 oooooooooooo	54.230.0792	17.0	17.5	77.5	23.1				
	404"	7	54.230.0793 oooooooooooo	54.230.0793	17.0	17.5	77.5	23.1				
050, 051, 075, 076	3/8"	8	54.230.0551	oooooooooooo	18.0	17.6	85.9	22.0				
064, 066, MS660	3/8"	7	oooooooooooo	54.230.0660	16.0	13.4	81.2	21.5				
084, 088, MS880	404"	7	54.230.0560	oooooooooooo	17.0	13.5	85.0	23.6				
08, 08S, S10	3/8"	7	54.230.0853 54.230.0552	oooooooooooo 54.230.0663	18.0 18.0	18.0 18.0	67.0 67.0	21.3 21.3				
090	404"	7	54.230.0553	oooooooooooo	18.0	21.9	95.8	27.8				
TANAKA												
ECS35, ECS355, ECS351, ECS405, 356, 350, 351, 370	3/8 LP"	6	54.230.0583	oooooooooooo	13.0	10.6	66.0	16.7				
TOPSO												
500, 510, 600, 610, 700, 710	3/8 LP"	6	54.230.0557	54.230.0665	15.0	16.4	69.0	18.9				



**PIGNONI PER MOTOSEGHE
CHAINSAW SPROCKETS**



**ADATTABILI alle seguenti marche
Fit the following brands**

ZENOAH	Passo	Denti	Articolo Rocchetto FISSO SPUR SPROCKET	Articolo CON ANELLI RIM SPROCKET		
	Pitch	Teeth				
			Ø Foro Bore Ø	Lungh. Foro Bore Length	Ø int Drum Ø	Alt. camp Drum Depth
G2000T	3/8 LP 1/4	6 8	54.230.0858 54.230.0859	oooooooooooo oooooooooooo		
G250, G2500	3/8 LP 1/4	6 8	54.230.0855 54.230.0868	oooooooooooo oooooooooooo		
G300, G3000, G310, G320AVS, G3200, G3300,	3/8 LP	6	54.230.0860	oooooooooooo	13.0	13.2 68.2 17.2
G3800 Ø foro (hole Ø) 13 mm Ø interno campana (inner drum Ø) 68 mm	3/8 LP	6	54.230.0856	oooooooooooo		
G400, G410, G450, G455, G500 Ø foro (hole Ø) 15 mm Ø interno campana (inner drum Ø) 68 mm	325"	7	54.230.0857	oooooooooooo		

I ricambi illustrati su questo catalogo sono ADATTABILI. Le marche ed i modelli originali sono citati SOLO a titolo indicativo
Non-genuine parts. O.E.M. brands and O.E.M. models are given for reference only

ANELLI AUTO-ALLINEANTI PER PIGNONI REPLACEABLE RIMS FOR SPROCKETS



EXTRA- PICCOLA
 325" - 7 denti
 MINI
 325 - 7 teeth



EXTRA- PICCOLA
 3/8" - 7 denti
 MINI
 3/8 - 7 teeth



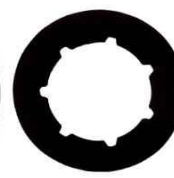
PICCOLA
 325" - 7 denti
 SMALL
 325 - 7 teeth



PICCOLA
 325" - 8 denti
 SMALL
 325 - 8 teeth



PICCOLA
 3/8" - 7 denti
 SMALL
 3/8 - 7 teeth



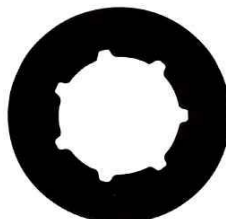
PICCOLA
 1/4" - 9 denti
 SMALL
 1/4 - 9 teeth



STANDARD
 325" - 9 denti
 STANDARD
 325 - 9 teeth



STANDARD
 3/8" - 7 denti
 STANDARD
 3/8 - 7 teeth



STANDARD
 3/8" - 8 denti
 STANDARD
 3/8 - 8 teeth



STANDARD
 404" - 7 denti
 STANDARD
 404 - 7 teeth



STANDARD
 404" - 8 denti
 STANDARD
 404 - 8 teeth

Articolo <i>Item no</i>	Descrizione <i>Description</i>	Scanalatura <i>Spline</i>	Passo <i>Pitch</i>	Denti <i>Teeth</i>
54.100.0603	Anello autoallineante <i>Sprockets' rim</i>	EXTRA PICCOLA <i>MINI</i>	325"	7
54.100.0610	Anello autoallineante <i>Sprockets' rim</i>	EXTRA PICCOLA <i>MINI</i>	3/8"	7
54.100.0601	Anello autoallineante <i>Sprockets' rim</i>	PICCOLA <i>SMALL</i>	325"	7
54.100.0602	Anello autoallineante <i>Sprockets' rim</i>	PICCOLA <i>SMALL</i>	325"	8
54.100.0611	Anello autoallineante <i>Sprockets' rim</i>	PICCOLA <i>SMALL</i>	1/4"	9
54.100.0606	Anello autoallineante <i>Sprockets' rim</i>	PICCOLA <i>SMALL</i>	3/8"	7
54.100.0608	Anello autoallineante <i>Sprockets' rim</i>	STANDARD <i>STANDARD</i>	325"	9
54.100.0604	Anello autoallineante <i>Sprockets' rim</i>	STANDARD <i>STANDARD</i>	3/8"	7
54.100.0605	Anello autoallineante <i>Sprockets' rim</i>	STANDARD <i>STANDARD</i>	3/8"	8
54.100.0607	Anello autoallineante <i>Sprockets' rim</i>	STANDARD <i>STANDARD</i>	404"	7
54.100.0609	Anello autoallineante <i>Sprockets' rim</i>	STANDARD <i>STANDARD</i>	404"	8



Conf. 10 pz.
 Packaged in lots of 10



Conf. 10 pz.
 Packaged in lots of 10

