

## VISTA

29CH0218



AU Reg. No.	0AUL5319E
USA Reg. No.	M866840
Born	29/03/2015
BW	39kg
W/205	410kg
Y/365	681kg
Poll	Homo Polled
MD Status	Tested Clear

Carcass Merit

- Vista actual data shows he ratioed Birth 98, WW 113, YW 114. Scan data, IMF 145%, REA 89%, Fats 168%
- Use to improve temperament, calving ease and carcass quality
- Along with impressive individual data Vista provides scrotal and eye appeal from a dam by maternal giant LT Long Distance
- Dams average WW ratio: 110 average, YW ratio 114.5
- Progeny should slick off early and maintain easy fleshing ability
- 4 herds, 15 progeny.

LT VISTA 5319 PLD

LT Ledger 0332 P

LT Long Distance 9001 PLD

LT Sundance 2251 PLD

LT Athena 2040 PLD

LT Ballet 9219 Polled

LT Blue Athena 0331 P

	CE-DIR	CE-DT	GL	BW	200D	400D	600D	MCW	MILK	SS	CWT	EMA	RIB	RUMP	RBY%	IMF%	DI	EI	NTI
EBV	+15.1	+1	-6.7	-4.2	+10	+20	+19	-9	+12	+1.8	+16	+0.9	+2.6	+3.4	-2.1	+1.2			
Acc	43%	35%	58%	52%	46%	50%	47%	44%	38%	41%	42%	35%	43%	43%	39%	36%	+\$58	+\$76	+\$27
%Rank	2	54	3	1	65	65	85	96	10	15	70	80	1	1	99	2	2	2	11

EBVS as at June 2020 **TOP 20%**

## EASY GAIN 29CH0211



WELCOME SWALLOW EASY GAIN F508 (AI) (ET) (P)

Reg. No.	CMAF508E
Born	07/09/2010
Poll	Homo Polled
MD Status	Tested Clear



Grand dam - LT Unlimited Maid 7184 as a 10 y.o.

- Easy Gain is the only bull in the breed to be top 1% CE, and top 1% 400 day weight, in fact 13 traits in top 1% of breed
  - Easy Pro is a leading US sire for low BWT, high milk and marbling and F508 is one of only a handful of progeny in Australia
  - Dam is by the now deceased Doc Silver renowned for CE, growth and carcass, 717 was specially selected as donor for Australian collections
  - G dam is dam of LT Polled Value and 4 other stud sires
  - 14 herds, 238 progeny, 149 scanned, 31 daughters.
- Field report -
- Easy Gain progeny, easy born, good performance cattle with nice muscle expression
  - Known high feed efficiency pedigree

LT Unlimited Ease 9108 (H)

NWMSU Doc Silver 362 PLD (P)

LT Easy Pro 1158 PLD (P)

BJR Silver Maid 717 ET (P)

LT Lady Macbeth 8413 ETP

LT Unlimited Maid 7184 P (P)

	CE-DIR	CE-DT	GL	BW	200D	400D	600D	MCW	MILK	SS	CWT	EMA	RIB	RUMP	RBY%	IMF%	DI	EI	NTI
EBV	+12.5	-3.1	-3.2	-3.2	+24	+54	+63	+58	+32	+1.4	+37	+0.5	+2.3	+3.2	-2.5	+1.9	+\$80	+\$102	+\$46
Acc	80%	71%	95%	96%	94%	94%	93%	87%	87%	95%	84%	76%	86%	85%	78%	76%	1	1	1
%Rank	4	84	34	3	1	1	2	8	1	30	2	90	1	2	99	1	1	1	1

EBVS as at June 2020 TOP 20%

## SOVEREIGN 29CH0216



RAILE SOVEREIGN J827 Y064 (P)

AU Reg. No.	0AUG8527E
USA Reg. No.	M808527
Born	01/02/2011
BW	34.5kg
W/205	325kg
Y/365	640kg
MD Status	Tested Clear

Calving Ease	★★★
Carcass Merit	🔥

### A New Leader in Genetic supremacy

- Supreme calving ease, growth and carcass merit in one package
- A Docility changer, both sire and progeny are incredibly quiet and easy to handle
- High customer satisfaction sire, breeders love his progeny for their combination of CE, performance, phenotype, and docility
- 16 herds, 76 progeny, 36 scanned, 8 daughters.

M6 Grid Maker 104 PET (P)

Raile 2250 T082 (P)

Fink 8790 of 2126 GM (P)

RC Nichole T082 V175 (H)

Finks Lady 2126G113BUDET (P)

RC Nichole 0219 (P)

	CE-DIR	CE-DT	GL	BW	200D	400D	600D	MCW	MILK	SS	CWT	EMA	RIB	RUMP	RBY%	IMF%	DI	EI	NTI
EBV	+12.7	+2.2	-10.3	-4.5	+12	+29	+30	+9	+20	-0.7	+25	+2.6	+0.9	+0.3	0	+0.1	+\$54	+\$63	+\$29
Acc	70%	49%	93%	91%	84%	84%	81%	70%	59%	85%	68%	59%	69%	67%	60%	58%	4	7	8
%Rank	4	36	1	1	48	25	55	91	1	99	24	10	20	50	60	53	4	7	8

EBVS as at June 2020 TOP 20%

## WHITE HOUSE 271CH9593



EATONS WHITE HOUSE 50148

AU Reg. No.	0AUL50148E
USA Reg. No.	M870902
Born	24/03/2015
BW	42kg
W/205	332kg
Y/365	641kg
MD Status	Tested Clear

### Breeders comments -

Whitehouse is a really good footed, back feet track exact in front feet tracks. He is an easy moving bull. Extremely long bodied with wide top and wide, deep butt. Full of meat in the twist. White House has huge testicles, ranks in the top 2% of breed. One appreciates the bull for his nice head with big crest and he appears to be a good shedder of coat. The calves were born well and no birth weight issues. The calves are great, really long bodied, thick butted with pretty heads. White House calves were the biggest yearling weights out of 1,000 bulls. His dam is a moderate size, wide hiped, beautiful head, tremendous uddered 11 year old cow with great teats, dark pigmentation.

LT Ledger 0332 (P)

Eatons Polled Value 4036 (P)

Eatons White House 30019 (P)

Eatons Elna 6639 (P)

Eatons Friend 10953

Eatons Elna 0505 (D)

	CE-DIR	CE-DT	GL	BW	200D	400D	600D	MCW	MILK	SS	CWT	EMA	RIB	RUMP	RBY%	IMF%	DI	EI	NTI
EBV	-	-	-4.4	-1.8	-	-	-	-	-	-	-	-	-	-	-	-	-	-	-
Acc	-	-	25%	25%	-	-	-	-	-	-	-	-	-	-	-	-	-	-	-
%Rank	-	-	15	9	-	-	-	-	-	-	-	-	-	-	-	-	-	-	-

EBVS as at June 2020 TOP 20%

## BIG BEN 29CH0206



WC BIG BEN 9036 (P)

AU Reg. No.	0AUE9036E
USA Reg. No.	EM775980
Born	26/02/2009
BW	34kg
W/205	343kg
Y/365	565kg
SC	38.5cm
Poll	Homo Polled

Calving Ease	★★★★
Carcass Merit	🔥

### Famously Reliable Calving Ease

- His pedigree stacks proven calving ease, maternal ability and convenience traits
- Super moderate with flawless phenotype and structure, backed by a powerful cow family that has a proven track record
- Ranks in the top 5% of the breed for CE and BW
- Sired the Grand Champion Bull at the American Royal National ROE Charolais Show in his first calf crop
- 13 herds, 46 progeny, 9 scanned.

LT Assertion 1277 (P)

VCR Sir Duke 914 PLD

LT Bluegrass 4017 (P)

VCR Miss Duchess 9506 (P)

LT Pearls Breeze 2236 (P)

VCR Miss Perfect 247 (P)

	CE-DIR	CE-DT	GL	BW	200D	400D	600D	MCW	MILK	SS	CWT	EMA	RIB	RUMP	RBY%	IMF%	DI	EI	NTI
EBV	+14.9	+5	-7.7	-3.1	+15	+22	+20	+7	+8	+1.8	+17	+1.8	+1.8	+2.1	-1	+0.8	+\$57	+\$76	+\$26
Acc	69%	56%	87%	85%	73%	74%	76%	68%	56%	62%	64%	55%	59%	59%	57%	54%	3	3	15
%Rank	2	12	1	3	25	55	82	92	37	15	65	40	4	6	93	6	3	3	15

EBVS as at June 2020 TOP 20%



## FARGO

237CH0734



RBM FARGO Y111

- Study Fargo's outcross pedigree, his EPD profile and then note his big spread from birth to trait-leading yearling growth
- Dig deeper to see what really makes him an easy-to-use, herd improver – a quiet disposition and superior foot structure that provides the solid foundation for powerful growth performance
- From across the spectrum of industry perspectives, Fargo effortlessly fits the bill
- Daughters are sought after for their type and kind
- Use Fargo sons to add muscle, frame and pure performance in high-outcome, market-topping progeny.

AU Reg. No.	
USA Reg. No.	EM809088
Born	05/02/2011
BW	43kg
W/205	355kg
Y/365	632kg
SC 12 Mo.	41cm
Poll	Homo Polled



9455 - progeny



7228 - progeny



7065 - progeny

Winn Mans Lanza 610S

**Sparrows Fargo 811U**

Sparrows Delight 74L

LT Easy Pro 1158 PLD

**HC Rhinestone 5100**

HC Jack 2082

	CE	BWT	WW	YW	MILK	MCE	MTL	SC	UDDER	TEAT	CW	REA	FAT	MARB	TSI
EPD	+8.2	+1.5	+55	+108	+13	+8.3	+41	+1.4	+1.27	+1.20	+52	+1.01	+0.033	-0.14	+242.64
Acc	.69	.92	.87	.85	.57	.56	.67	.73	.32	.31	.41	.44	.39	.41	
%Rank	30	70	2	1	30	25	2	15	10	15	1	5	95	100	2

EPDS as at July 2020 TOP 35%

## MONTICELLO

29CH0223



FTJ MONTICELLO 1806

### A National Treasure

- Monticello is quite possibly the most unique and complete Charolais bull in the breed
- His transcendent EPD package ranks nine of his 13 traits in the top 10% of the breed and eight of 13 in the top 5%
- Backed by the famous Shandy cow family that produced the hall of fame female sire LT Unlimited 9108
- Destined to replace his revolutionary sire, Monticello offers improved EPD's, nicer phenotype and a stronger cow family, while maintaining exceptional feet as well as all the other functional traits that have made his sire so popular.

AU Reg. No.	
USA Reg. No.	M914065
Born	23/01/2018
BW	37kg, ratio 82%
W/205	342kg, ratio 102%
Y/365	621kg, ratio 109%
SC 12 Mo.	37cm
REA	Ratio 102%
IMF	Ratio 118%
Rib Fat	Ratio 117%
Poll	Hetro Poll



Dam LTBV Shandy1527

LT Rio Blanco 1234 P

**VPI Free Lunch 708T**

VPI Miss Duchess 404 P

LT Blue Value 7903 ET

**FTJ LTRB905 LTBV Shandy1527**

FTJ Rio Bravo Shandy 4042-905

	CE	BWT	WW	YW	MILK	MCE	MTL	SC	UDDER	TEAT	CW	REA	FAT	MARB	TSI
EPD	+10.2	-2.1	+43	+91	+4	+10.4	+26	+1.4	+1.21	+1.02	+43	+0.76	+0.060	+0.51	+246.28
Acc	.29	.44	.34	.32	.24	.21		.29	.37	.36	.22	.23	.21	.20	
%Rank	15	15	8	2	90	5	50	6	25	70	1	35	100	1	1

EPDS as at July 2020 TOP 35%



## COOKIE MONSTER 48LM1034



DFVC COOKIE MONSTER 108H (P) (B) (PN) (AA)

Reg. No.	IMUPT108
USA Reg. No.	NPM1483096
Born	07/01/1998
Grade	Pure
Colour	Black
Poll	Polled
FS	6.3
AA two copies of F94L	

- The return of an iconic bull
- Rock solid EBVs with 237 progeny in 54 herds
- Trait leader in IMF, Fats and Docility
- 48 herds, 223 progeny, 168 docility, 60 scan, 52 daughters.



Cole First Down 46D (HP) (HB\*) (PN) (AC)

Wulfs Quarterback 4222B (P) (B) (PN) (AA)

Chas First Choice 6004F (HP) (HB) (PN) (AA)

SLVL Angel Cookie 140D (B) (PU)

Chaz Miss Roxanne 92C (P) (B) (PU)

EAfm Cookie (R) (PU)

	CE-DIR	CE-DT	GL	BW	200D	400D	600D	MCW	MILK	SS	CWT	EMA	RIB	RMP	RBY%	IMF%	DOC	VTI	DTI	SRI	HSTI
EBV	-1.5	+1.6	-3	+2.4	+26	+39	+64	+64	+5	+1	+34	+1	+0.4	+0.5	-0.3	+0.3	+61				
Acc	84%	80%	95%	95%	94%	94%	95%	88%	93%	89%	86%	73%	81%	80%	75%	73%	96%				
%Rank	78	20	33	80	10	28	10	16	65	50	32	70	10	11	94	11	10	65	68	45	40

EBVS as at June 2020 TOP 20%

## VISION 29LM0090



MANDAYEN VISION Y329 (HP) (B) (PN) (AA)

Reg. No.	MDNPY329
Born	06/10/2003
BW	38kg
Wt 200	330kg
Wt Mat	1075kg
Sc 16 Mo	37cm
Grade	Pure
Colour	Hetro Black
Poll	Homo Polled
AA two copies of F94L	

- 17 traits in top 10% of breed
- Trait leader in 12 traits, incl CE, growth, milk, carcass, doc
- No bull does it better in EBV's! 755 progeny in 87 herds, 159 daughters
- Produces thick, eye appealing progeny
- Vision has it all, the EBV's, the phenotype, outcross and Australian proven
- Semen in NZ, US, UK & EU, truly international
- 89 herds, 766 progeny, 600 docility, 196 scan, 14 carcass, 163 daughters.

White Lakes Sire Power (P) (PN) (AA)

Tomahawks Black Frontier 117C (HP) (HB) (PN)

White Lakes Vision 2000 (S) (PF) (AA)

Castlereagh Connie R37 (HP) (HB\*) (PN)

White Lakes Knutsie (P) (PF)

Lukas Connie (P) (HB\*) (PS)

	CE-DIR	CE-DT	GL	BW	200D	400D	600D	MCW	MILK	SS	CWT	EMA	RIB	RMP	RBY%	IMF%	DOC	VTI	DTI	SRI	HSTI
EBV	+5.9	+9.4	-5.1	+1	+25	+48	+70	+74	+17	+0.8	+51	+2.3	0	+0.1	+1	+0.1	+61				
Acc	91%	87%	98%	98%	97%	97%	97%	95%	97%	96%	93%	89%	92%	91%	86%	87%	98%				
%Rank	4	1	9	30	15	6	4	5	1	62	1	30	45	25	28	28	10	5	2	1	2

EBVS as at June 2020 TOP 20%

## GENERAL 54LM1084



AUTO DOLLAR GENERAL 122R (HP\*) (HB\*) (PN) (CC)

Reg. No.	IMUPA122
Born	02/04/2005
BW	33kg
WW	385kg
YW	590kg
Grade	Pure
Colour	Homo Black
Poll	Homo Polled

- In Aust, 15 traits in top 10% of breed, 94 progeny in 9 herds, 43 scans, 73 docility scores
- Outcross bloodlines
- 11 herds, 101 progeny, 77 docility, 44 scan, 26 daughters.

2014 *Inspection* - of the now deceased General. Progeny had length of body, some depth and style. Females carried heavily in milk. The CE, Growth and carcass value of General is an asset to any herd.

LVLS Farmer 4G (PU)

Auto Hackett 702H (P) (PU)

LVLS Secret Weapon 4408K (PU)

Auto Kyria 232K (PU)

LVLS 408H (PU)

Wulfs Happiness 8136H (PU)

	CE-DIR	CE-DT	GL	BW	200D	400D	600D	MCW	MILK	SS	CWT	EMA	RIB	RMP	RBY%	IMF%	DOC	VTI	DTI	SRI	HSTI
EBV	+2.7	-1.7	-2.1	+0.3	+27	+47	+64	+75	+22	+1.5	+45	+1.2	+0.6	+1.2	-0.9	+1.3	+43				
Acc	65%	50%	90%	93%	90%	90%	92%	76%	82%	82%	76%	68%	77%	75%	67%	68%	92%				
%Rank	18	95	46	11	8	8	10	4	1	20	3	65	8	3	96	1	50	40	15	18	12

EBVS as at June 2020 TOP 20%

## AMAZING BULL

54LM1109



WULFS AMAZING BULL T341A (HP\*) (PN) (AA)

Ident	IMUPJ341
Born	06/03/2013
BW	38kg
Wt 200	343kg
Wt 400	585kg
Sc 12 Mo	39.5cm
Grade	Pure
Poll	Homo Polled
FS	7.2
AA two copies of F94L	

"Amazing Bull earned the right to be Lot 1 of the 2014 Wulf Cattle Opportunity Sale because he is the complete and total package. He received praise while on display at the NWSS for his sound and eye appealing structure. The bull should follow in the footsteps of his famous sire and produce extremely functional daughters along with sons that will have demand in the industry.

Amazing Bull - amazing EBVs - check the chart! Top 5% in 13 traits and top 10% in 18 traits! Amazing Bull covers all the performance and phenotype bases.

- 36 herds, 176 progeny, 118 docility, 39 scans, 11 daughters.

LVLS Polled Justice 0601E (PU)	JLWM Dire Strayts 4109P (HP (PU)
Hunt Mr Jock 44J (P) (B) (PN) (AA)	Wulfs Ultra Diamond 8571U (P) (PU)
Hunt Miss Giggie 129G (PU)	Wulfs Nichola 3279N (P) (B) (PU)

	CE-DIR	CE-DT	GL	BW	200D	400D	600D	MCW	MILK	SS	CWT	EMA	RIB	RMP	RBY%	IMF%	DOC	VTI	DTI	SRI	HSTI
EBV	+8.5	+6.1	-8.4	-1	+28	+47	+59	+72	+20	+2.8	+46	+3.2	0	+0.1	+0.9	+0.3	+59				
Acc	71%	63%	94%	93%	91%	91%	91%	75%	72%	80%	76%	68%	76%	73%	67%	68%	94%				
%Rank	1	1	1	2	5	8	18	6	1	1	2	8	45	25	38	11	11	1	1	1	3

EBVS as at June 2020 TOP 20%

## DAUPHIN

29LM2175



CARMORN DAUPHIN (PN) (AA)

Reg. No.	IMBFD10
Born	25/01/2008
Grade	French Pure
AA two copies of F94L	



- Exciting new Limousin sire to add real quality and phenotype with no performance sacrifice
- Dam line is one of the best in the UK

Romeo (PU)	Pelletstown Ken (PU)
0485 Dauphin (PN)	Carmorn Penny (PU)
Ombrette (PU)	Carmorn Helen (PU)

	CE-DIR	CE-DT	GL	BW	200D	400D	600D	MCW	MILK	SS	CWT	EMA	RIB	RMP	RBY%	IMF%	DOC	VTI	DTI	SRI	HSTI
EBV	-0.9	+2.1	+0.7	+3.1	+20	+31	+42	+38	+2	+0.5	+22	-1	-0.2	-0.6	+0.9	-0.1	-				
Acc	47%	46%	53%	49%	48%	48%	48%	47%	48%	47%	46%	40%	43%	43%	41%	39%	-				
%Rank	72	18	92	94	48	60	60	70	90	80	72	96	80	80	36	62		80	88	88	90

EBVS as at June 2020 TOP 20%

## ALL TIME

29SM0466



OVAL FALL TIME A322

Reg. No.	IMU3J322
USA Reg. No.	2749844
Born	01/02/2013
BW	30kg
W/205	336kg
Y/365	590kg
FS	6
Poll	Homo Polled
Colour	Homo Black
Calving Ease	★★
Carcass Merit	🍖🍖

### Top Shelf Genetics

- Elite purebred sire with top 1% All Purpose and top 1% Terminal Index values
- His dam, a 14th generation female for the Fischer family, is a productive young cow rich in maternal history
- Outstanding calving ease and maternal traits with even stronger carcass merit and end product value
- Very correct, sound made bull with added length of body and thickness
- 2 herds, 6 progeny, 5 scan.

Mr NLC Upgrade U8676 BB PP

Hooks Shear Force 38K BH PP

**MCM Top Grade 018X BB PP**

**Oval F YIN Y26 BB PP**

MCM 513R P

Oval F Willow W918 B P

	BREED %	CED	BW	WW	YW	ADG	MCE	Milk	STAY	DOC	CW	Angle	MARB	BF	REA	SHR	API	TI
<b>EPD</b>	<b>PB SM</b>	<b>+10</b>	<b>+1.7</b>	<b>+77.5</b>	<b>+115.6</b>	<b>+.24</b>	<b>+6.5</b>	<b>+32.9</b>	<b>+17.0</b>	<b>+4.8</b>	<b>+43.6</b>		<b>+.14</b>	<b>-.112</b>	<b>+.92</b>	<b>-0.40</b>	<b>+135</b>	<b>+79</b>
Acc	Homo. Blk.	.66	.83	.79	.77	.77	.45	.57	.33	.49	.67		.61	.55	.65	0.17		
%Rank	Homo. Pld.	40	50	15	20	25	30	1	60	99	4		20	45	30	20	20	10

EPDs Spring 2020 **TOP 35%**

## NUKARA

29SM0493



BONNYDALE NUKARA (P) (AI) (B)

Reg. No.	MBBPN073
Born	23/01/2017
BW	36kg
Y/365	616kg
Wt 21mo	875kg
SS 12mo	44cm
Poll	Homo Polled
Colour	Homo Black
Grade	Purebred
FS	6

- Nukara was the top selling bull, at \$19,000, at the 2018 Bonnydale Sale
- Featuring impeccable structure, sound, well shaped feet with good heel depth
- His EBV should identify him as a safe CE bull. Initial calving in the field confirm this. He is a heifer's first calf
- His depth, muscle, body capacity and strong top are the features that many admire, combined with his docile nature
- His sire is the Australian highest selling Black Simmental bull
- His grand dam is the EBV profile cow, Georgia
- Nukara is the no-holes homo polled, homo black purebred Simmental the industry has been looking for!
- 3 herds, 12 progeny analysed, 2 scan.

RCR Augustus R54 (P) (B)

Triple C Bettis S72J (P) (B)

Bonnydale Augustus L84 (P) (AI) (B)

Bonnydale Georgia H279 (P) (ET) (AI) (B)

Bonnydale Jossie G204 (P) (ET) (AI) (B)

Bonnydale Georgia (P) (ET) (AI) (B)

	CE-DIR	CE-DT	GL	BW	200D	400D	600D	MCW	MILK	SS	DTC	CWT	EMA	RIB	RUMP	RBV%	IMF%	DOC	DMI	EMI	NTI	VTI
EBV	+5.7	+9	-0.9	-1.8	+25	+48	+54	+45	0	+1.7	+0.1	+38	+3.8	-0.2	-0.9	+0.4	+0.6	+19	+\$61	+\$85	+\$36	+\$50
Acc	53%	46%	79%	78%	73%	73%	68%	60%	48%	73%	27%	60%	57%	57%	56%	57%	49%	62%				
%Rank	22	3	55	10	18	16	25	42	95	3	83	10	15	65	87	62	25	23	2	2	3	3

EBVS as at June 2020 **TOP 20%**

## BEACON

237SM1085



HOOK'S BEACON 56B



Reg. No.	IMU2K056
USA Reg. No.	2854180
Born	17/02/2014
BW	37kg
W/205	344kg
Y/365	635kg
FS (Mat)	6.5
Poll	Homo Polled
Colour	Homo Black
Calving Ease	★★★★
Carcass Merit	👍👍👍👍

### Dominant Purebred Genetics

- Highly proven purebred sire that leads the breed for All Purpose Index
- Four star calving ease with strong growth and top 2% Maternal Calving Ease, Stayability, Marbling and Rib Eye Area
- Progeny have terrific feet and structure with extra heel
- High producing, good uddered dam with progeny ratios of 109 BW, 112 WW, 107 IMF and 111 REA
- 6 herds, 79 progeny analysed, 21 scan, 4 daughters.
- 2018 Inspection: Good phenotype, sound footed, docile, good head carriage, sheath 4, no white, has a good typical Simmie hip/pin set up. Great EPD's, nice bull.

Nichols Legacy G151

GW Predestined 701T

Hook's Shear Force 38K

Hooks Zafirah 41Z

C&D Tracy

Hook's Uno 54U

	BREED %	CED	BW	WW	YW	ADG	MCE	Milk	STAY	DOC	CW	Angle	MARB	BF	REA	SHR	API	TI
EPD	PB SM	+17	-2.8	+76.5	+115.2	+24	+12.4	+17.8	+19.6	+12.2	+39.0		+68	-.051	+1.70	-0.46	+187	+97
Acc	Homo. Blk.	.86	.95	.93	.93	.93	.77	.78	.56	.37	.80		.80	.69	.79	0.20		
%Rank	Homo. Pld.	2	1	20	20	25	1	90	20	30	10		1	99	1	5	1	1

EPDs Spring 2020 **TOP 35%**

## ROOSEVELT

29SM0483



TJ ROOSEVELT 366E

Owned by Triangle J Ranch, NE; Gibbs Farms, AI;  
ABS Global, Inc., WI.

USA Reg. No.	3288497
Reg. No.	IMU3N366
Born	21/02/2017
BW	38kg
W/205	372kg
Y/365	568kg
Wt 20mo	740kg
SC 20mo	41.5cm
FS	6.6
Poll	Homo Polled
Colour	Homo Black
Calving Ease	★★
Carcass Merit	👍👍👍

### With Self-Discipline Most Anything is Possible

- Disciplined combination of calving ease, growth, end product and cow power
- Incredibly dynamic EPDs ranking in the top 5% of the breed for eleven EPDs or indexes
- Attractive patterned and super sound structured bull with added muscle and dimension
- DNA tested DLF, USA PB SM.
- May 2019 inspection: An attractive Black Simmental, stands on very good feet, with very good claw shape and heel depth. A longer body type with good muscle, has good depth and capacity and bone. Carries no white. Clean sheath 5, with shaped scrotal. Good shoulder set, has good head carriage. Very docile.

Triple C Singletary 83H BB PP

TJ Sharper Image 809U BB PP

CCR Cowboy Cut 5048Z BB PP

TJ 99A BB PP

CCR MS 4045 Time 7322T BB PP

TJ 22X BB PP

	BREED %	CED	BW	WW	YW	ADG	MCE	Milk	STAY	DOC	CW	Angle	MARB	BF	REA	SHR	API	TI
EPD	PB SM	+9	+2.7	+91.3	+135.3	+28	+5.9	+26.2	+21.1	+15.5	+50.5		+28	-.060	+99	-0.47	+152	+88
Acc	Homo. Blk.	.59	.76	.70	.68	.68	.34	.52	.36	.41	.56		.48	.45	.53	0.18		
%Rank	Homo. Pld.	65	75	1	2	10	40	15	5	4	1		10	99	20	4	3	1

EPDs Spring 2020 **TOP 35%**



## NEW STANDARD 711016



RISSINGTON NEW STANDARD AU158 (P)

NZ Reg. No.	0049AU0158
Reg. No.	IMNPC158
Born	18/08/2007

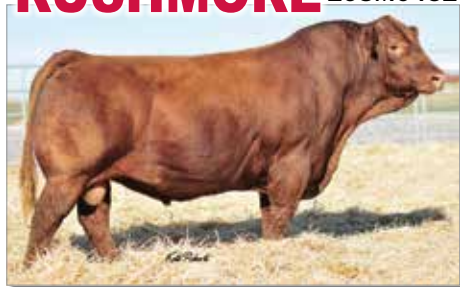
- New Standard progeny are in the NZ B&L Beef Progeny Test Cohort 1. The trial has 52 sires from 4 breeds Angus, Hereford, Charolais and Simmental, and 3 country origins NZ, Aus and USA. New Standard ranked No. 1 of the 52 sires for weaning, yearling and 18 month weight. In carcass traits New Standard ranks No. 4 ultrasound EMA and in top 30% for fats and IMF. With carcass actual data he ranks No. 1 carcass weight, No. 2 EMA and No. 8 for marbling and fat as average. New Standard offers a breeders and magnificent proven genetic packages!
- 10 herds, 314 progeny, 205 scan, 83 daughters.

Puketawa AK151	Rissington AL580
<b>Puketawa New Level AN151 (P)</b>	<b>Rissington AN398</b>
Puketawa AJ29	Rissington AL65

	CE-DIR	CE-DT	GL	BW	200D	400D	600D	MCW	MILK	SS	DTC	CWT	EMA	RIB	RUMP	RBV%	IMF%	DOC	DMI	EMI	NTI	VTI
<b>EBV</b>	<b>+1.5</b>	<b>-8.5</b>	<b>-7.4</b>	<b>+0.1</b>	<b>+33</b>	<b>+73</b>	<b>+87</b>	<b>+76</b>	<b>+9</b>	<b>+2.6</b>	<b>-4.5</b>	<b>+50</b>	<b>+2.6</b>	<b>+1.4</b>	<b>+1.6</b>	<b>-0.6</b>	<b>+1.3</b>	<b>+22</b>	<b>+\$79</b>	<b>+\$111</b>	<b>+\$54</b>	<b>+\$59</b>
Acc	88%	83%	96%	97%	96%	97%	96%	93%	94%	95%	62%	91%	86%	92%	91%	89%	87%	95%				
%Rank	54	96	1	32	2	1	2	8	48	1	2	1	48	10	11	88	5	23	1	1	1	1

EBVS as at June 2020 **TOP 20%**

## RUSHMORE 29SM0432



TRAXS RUSHMORE X103 (P)

USA Reg. No.	2574812
Reg. No.	IMUPF103
Born	17/02/2010
BW	38.5kg
W/205	375kg
Y/365	685kg
SC	41cm

Calving Ease	★★★
Carcass Merit	★★★

### Rock Solid Red Genetics

- Unique pedigree of FREEDOM x HOOSIER makes him a great mating on BEEF MAKER, Gunner and nearly every other red pedigree
- High performance, muscle, capacity and power
- Offers excellent calving ease and birth weight with added growth to weaning and big time REA
- The best overall FREEDOM son to surface for moderate birth weight, performance, phenotype and pedigree
- DNA tested homozygous polled, PB SM
- 10 herds, 41 analysed, 19 scan, 3 daughters.



BH Tracker 998J P	LCHMN Bright Light L122L BH PP
<b>THSF Freedom 300N PH</b>	<b>Miss Trax U850 R PH</b>
SAFN Miss Zing 02H H	R549 R S

	CE-DIR	CE-DT	GL	BW	200D	400D	600D	MCW	MILK	SS	DTC	CWT	EMA	RIB	RUMP	RBV%	IMF%	DOC	DMI	EMI	NTI	VTI
<b>EBV</b>	<b>+7.2</b>	<b>+2.9</b>	<b>-4.2</b>	<b>-1.7</b>	<b>+24</b>	<b>+36</b>	<b>+28</b>	<b>+11</b>	<b>+2</b>	<b>+0.6</b>	<b>-</b>	<b>+31</b>	<b>+5.7</b>	<b>-1</b>	<b>-2.1</b>	<b>+1.9</b>	<b>-0.4</b>	<b>+10</b>	<b>+\$43</b>	<b>+\$38</b>	<b>+\$22</b>	<b>+\$52</b>
Acc	57%	38%	83%	86%	81%	83%	77%	64%	70%	73%	-	65%	52%	60%	58%	53%	47%	62%				
%Rank	18	32	7	11	20	40	82	94	90	40		23	1	96	99	4	95	46	30	56	55	2

EBVS as at June 2020 **TOP 20%**

## DEFENDER 717073



KERRAH DEFENDER D620

NZ Reg. No.	1667AD0620
Reg. No.	IMNPL620
Born	24/09/2015

Kerrah Simmentals is New Zealand's largest, and one of the leading gene pools of fully recorded Simmentals. The breeding program is focused on selecting animals that perform in a difficult climate, in a commercially run and focused operation. Selection is based around docility, structure and balanced breeding values; focused on producing cattle that will deliver a live calf, rapid growth and be easily finished before their second winter on pasture. Kerrah Simmentals are based at Tangiwai Station a 200Ha hill country property rising from 500 to 2400 feet above sea level. The farm is situated on the boundary of Hawkes Bay and Gisborne districts.

- 1 herd, 32 analysed, 23 scan.

Moneymore Romulus AR37	PRL Minnesota 48M A0248
<b>Kerrah Yamaha AY417</b>	<b>Kerrah AW8020</b>
Ailsa G.R. AM217	Ailsa G.R. AP420

	CE-DIR	CE-DT	GL	BW	200D	400D	600D	MCW	MILK	SS	DTC	CWT	EMA	RIB	RUMP	RBV%	IMF%	DOC	DMI	EMI	NTI	VTI
<b>EBV</b>	<b>-6.5</b>	<b>-5.4</b>	<b>+1.2</b>	<b>+3.2</b>	<b>+28</b>	<b>+50</b>	<b>+83</b>	<b>+95</b>	<b>+12</b>	<b>+1.8</b>	<b>-1.1</b>	<b>+42</b>	<b>+4.1</b>	<b>+0.3</b>	<b>+0.5</b>	<b>+1.3</b>	<b>+0.8</b>	<b>+2</b>	<b>+\$45</b>	<b>+\$74</b>	<b>+\$41</b>	<b>+\$40</b>
Acc	59%	51%	80%	88%	83%	85%	86%	75%	53%	83%	35%	72%	63%	72%	71%	67%	61%	81%				
%Rank	96	93	96	94	10	9	2	2	18	3	52	6	10	40	30	20	15	68	25	8	1	22

EBVS as at June 2020 **TOP 20%**

## COPPERHEAD 29SM0496



GW COPPERHEAD 919G

USA Reg. No.	3549340
Born	06/02/2019
BW	33kg
W/205	323kg
Y/365	553kg
Sc 12mo	36cm
FS	5+
Poll	Homo Polled

### Surge In Performance and Power

- 2020 Gateway High Seller
- Big spread genetics in a powerful package with added rib shape and dimension
- Homozygous polled by parentage (DNA confirmation pending), 1/2 SM, 3/8 AR, 1/8 AN.



GW Premium Beef 021TS	VGW Direct Drive 512
<b>GW Movin On 183C</b>	<b>GW Miss Direct Drive 932E</b>
GW Miss Predestined 117Y	GW Miss Yukon 482B

	BREED %	CED	BW	WW	YW	ADG	MCE	Milk	STAY	DOC	CW	Angle	MARB	BF	REA	SHR	API	TI
<b>EPD</b>	<b>1/2 SM</b>	<b>+16</b>	<b>-1.1</b>	<b>+81.1</b>	<b>+127.7</b>	<b>+29</b>	<b>+8.7</b>	<b>+14.3</b>	<b>+16.4</b>	<b>+12.5</b>	<b>+38.7</b>		<b>+42</b>	<b>-0.66</b>	<b>+80</b>	<b>-0.18</b>	<b>+153</b>	<b>+86</b>
Acc	Red	.42	.54	.49	.50	.50	.22	.39	.22	.17	.46		.37	.35	.44	0.05		
%Rank		10	20	5	4	10	15	99	40	35	20		30	30	20	99	4	2

EPDs Spring 2020 **TOP 35%**



## FIREMAN

29SM0492



USA Reg. No.	3498946
Reg. No.	
Born	15/03/2018
BW	38kg
W/205	284kg
Y/365	540kg
Wt 24mo	695kg
SC 18mo	37.5cm
FS	6

### Call The Fireman

- Offers the opportunity to change efficiency and profitability
- Our pick of the strong offering from the 22X cow at Eagle Pass
- Calving ease, performance and end product merit
- DNA tested homozygous black, homozygous, 1/2 SM, 1/2 AN.

EGL FIREMAN 111F

Owned by Eagle Pass Ranch, SD; ABS Global, Inc., WI.



Connealy In Sure 8524

MR NLC Upgrade U8676

G A R Sure Fire

TJ 22X

Chair Rock 5050 G A R 8086

MS Miss 306R

	BREED %	CED	BW	WW	YW	ADG	MCE	Milk	STAY	DOC	CW	Angle	MARB	BF	REA	SHR	API	TI
EPD	1/2 SM	+20	-1.8	+67.5	+104.8	+23	+10.1	+32.1	+16.4	+13.2	+35.2		+69	-.037	+1.04	-0.33	+168	+87
Acc	Homo. Blk.	.45	.55	.54	.54	.54	.30	.47	.26	.45	.51		.48	.40	.49	0.04		
%Rank	Homo. Pld.	1	15	40	40	40	5	2	40	25	30		3	65	3	50	1	1

EPDs Spring 2020 TOP 35%

## FRANCHISE

29SM0494



USA Reg. No.	3148384
Born	20/01/2016
BW	39kg
W/205	343kg
Y/365	570kg
SC Mat	43cm
FS	5

Calving Ease	★★★
Carcass Merit	👍👍👍

### Must Use Sire for 2020

- As physically appealing as you can make a SimAngus bull and he is passing it on
- Will see heavy use in all aspects of the beef industry for phenotype along with performance
- He and his progeny were the highlights of the spring and fall sale season
- Unique blend of body, power and looks make him a game changer within the breed
- DNA tested homozygous black, homozygous polled, 1/2 SM, 1/2 AN.

TJ FRANCHISE 451D

Owned by Triangle J Ranch, NE; ABS Global, Inc., WI.



Triple C Singletary 53H

S A V Net Worth 4200

CCR Cowboy Cut 5048Z

TJ Miss Net Worth U11

CCR MS 4045 Time 7322T

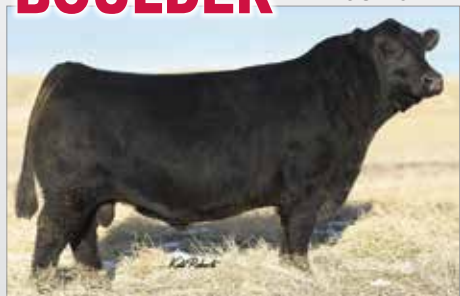
K&E Morning Pride FAME99

	BREED %	CED	BW	WW	YW	ADG	MCE	Milk	STAY	DOC	CW	Angle	MARB	BF	REA	SHR	API	TI
EPD	1/2 SM	+15	+1.0	+79.1	+121.6	+27	+10.4	+19.9	+18.2	+14.6	+35.7		+65	+0.003	+62	-0.47	+161	+87
Acc	Homo. Blk.	.69	.88	.83	.81	.81	.46	.58	.36	.61	.65		.47	.48	.61	0.18		
%Rank	Homo. Pld.	15	65	10	10	15	4	70	20	15	25		4	99	55	5	2	1

EPDs Spring 2020 TOP 35%

## BOULDER

29SM0472



Reg. No.	IMUDJ1339
USA Reg. No.	2880390
Born	31/08/2013
BW	25kg
W/205	317kg
Y/365	550kg
Poll	Homo Polled
Colour	Homo Black

Calving Ease	★★★★
Carcass Merit	👍👍👍👍

### Muscle and Maternal

- Top of the breed for calving ease, marbling and maternal All Purpose Index
- Moderate framed, big ribbed, deep flanked stud with loads of muscle and shape
- Progeny proven - they calve easy and display his good looks - you will love them at weaning
- Use to moderate frame, add flesh and muscle in one generation
- 1/2 SM, 1/2 AN.

CCR BOULDER 1339A (P) (B)



Syden C C & 7 PP

Triple C L Taylor BB PP

Hoover Dam BB PP

CCR Ms L Taylor 1339Y BB PP

Erica of Eliston C124 BP

CCR 0135 Star 7103T BB PP

	BREED %	CED	BW	WW	YW	ADG	MCE	Milk	STAY	DOC	CW	Angle	MARB	BF	REA	SHR	API	TI
EPD	1/2 SM	+15	-1.7	+67.1	+105.0	+24	+8.9	+21.3	+13.9	+16.3	+25.2		+66	-.073	+1.06	-0.45	+155	+85
Acc	Homo. Blk.	.83	.93	.91	.90	.90	.65	.72	.45	.83	.78		.75	.68	.73	0.16		
%Rank	Homo. Pld.	15	15	40	40	35	15	55	70	4	70		4	20	2	10	4	2

EPDs Spring 2020 TOP 35%