



# Cheat Sheet

# Volume & Surface Area

Formulas

**Created By:**

**Math in Demand**

# Get Connected with Math in Demand

Please don't  
forget to  
rate me.



Teachers Pay Teachers Store



Check Out My Blog



Visit My Pinterest

Click on the  
buttons to  
learn more  
about me!



Watch My Videos



Email Me

## Thank you!!!

# Teacher Notes

- If you want to make a class set, I would recommend laminating the cheat sheet so that you can use it year after year.
- You could also decide to print a cheat sheet for each student and have them glue it into their interactive notebooks.
- If you give one to each student, you could have them color the cheat sheet (If time is limited, I would skip or have students color at home).

Please let me know if you have any questions about the cheat sheet!

You can email me at

[mathindemand@hotmail.com](mailto:mathindemand@hotmail.com).



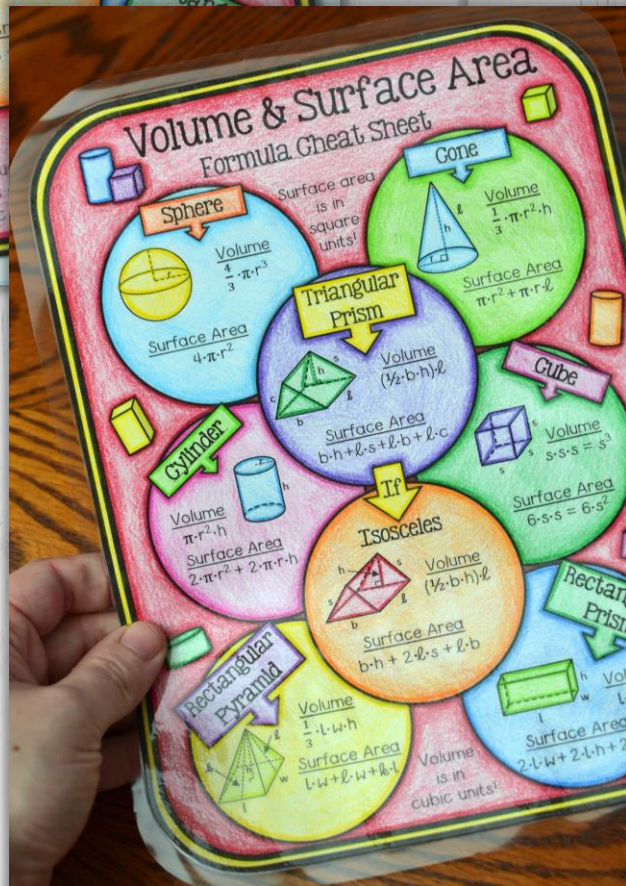
Math in Demand

# A Few Options



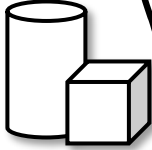
Works  
Great  
as a  
Cheat  
Sheet!

Glue in  
notebooks  
or  
laminates!

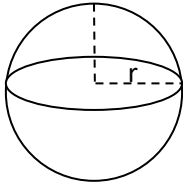


# Volume & Surface Area

## Formula Cheat Sheet



### Sphere

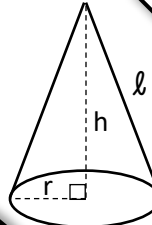


Volume  
 $\frac{4}{3} \cdot \pi \cdot r^3$

Surface Area  
 $4 \cdot \pi \cdot r^2$

Surface area  
is in  
square  
units!

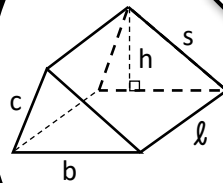
### Cone



Volume  
 $\frac{1}{3} \cdot \pi \cdot r^2 \cdot h$

Surface Area  
 $\pi \cdot r^2 + \pi \cdot r \cdot \ell$

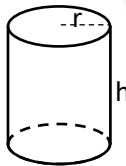
### Triangular Prism



Volume  
 $(\frac{1}{2} \cdot b \cdot h) \cdot \ell$

Surface Area  
 $b \cdot h + \ell \cdot s + \ell \cdot b + \ell \cdot c$

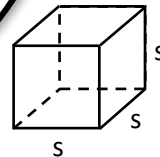
### Cylinder



Volume  
 $\pi \cdot r^2 \cdot h$

Surface Area  
 $2 \cdot \pi \cdot r^2 + 2 \cdot \pi \cdot r \cdot h$

### Cube

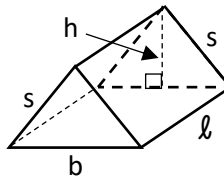


Volume  
 $s \cdot s \cdot s = s^3$

Surface Area  
 $6 \cdot s \cdot s = 6 \cdot s^2$

If

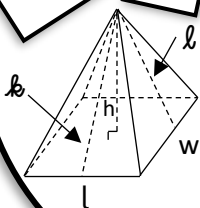
### Isosceles



Volume  
 $(\frac{1}{2} \cdot b \cdot h) \cdot \ell$

Surface Area  
 $b \cdot h + 2 \cdot \ell \cdot s + \ell \cdot b$

### Rectangular Pyramid

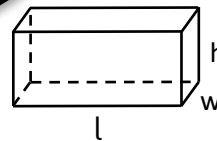


Volume  
 $\frac{1}{3} \cdot l \cdot w \cdot h$

Surface Area  
 $l \cdot w + \ell \cdot w + \ell \cdot l$

Volume  
is in  
cubic  
units!

### Rectangular Prism



Volume  
 $l \cdot w \cdot h$

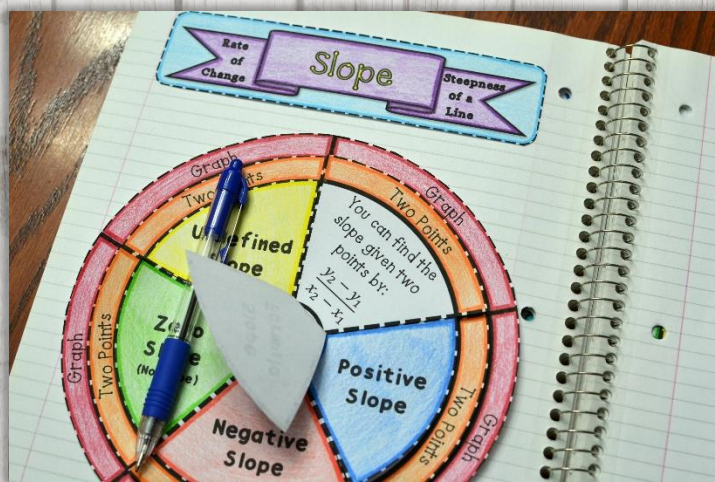
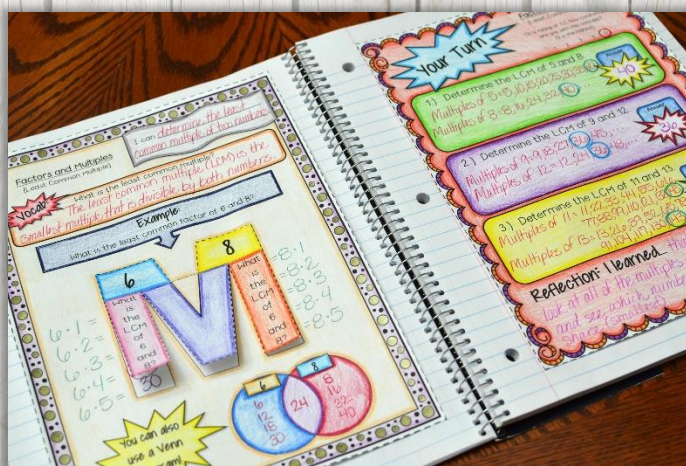
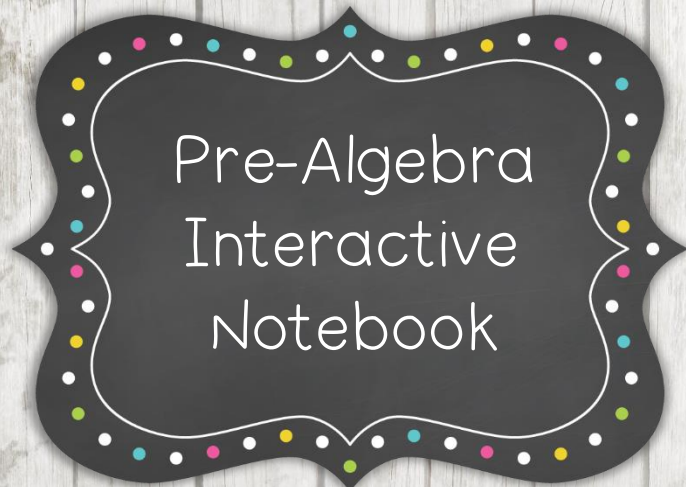
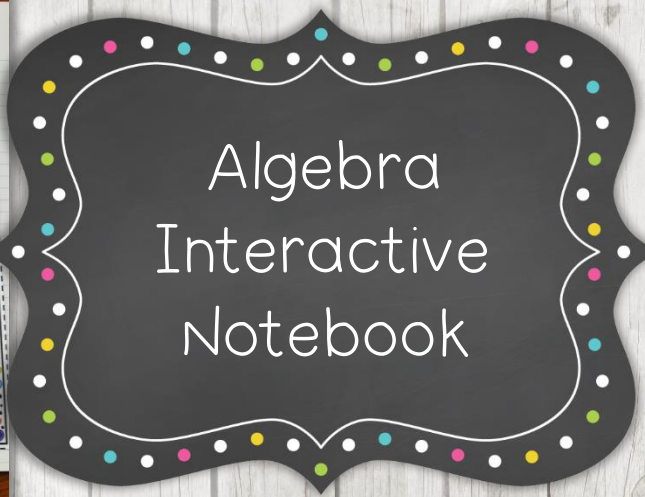
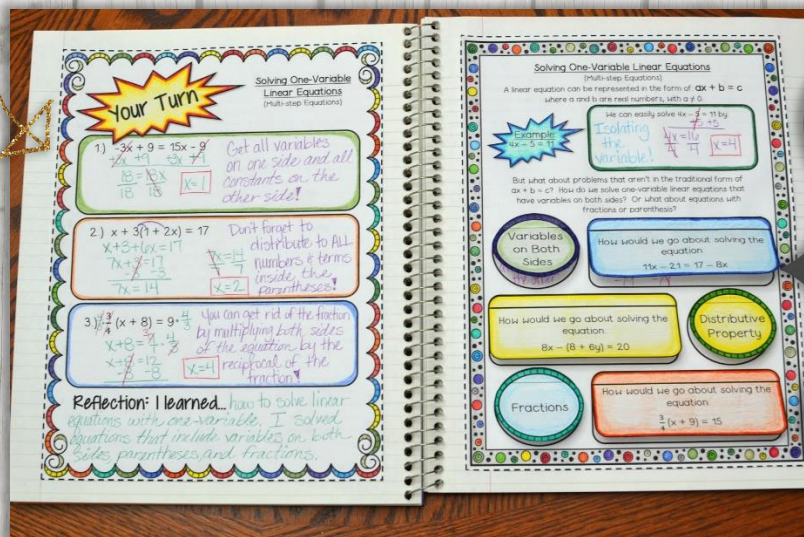
Surface Area  
 $2 \cdot l \cdot w + 2 \cdot l \cdot h + 2 \cdot w \cdot h$

If you like this cheat sheet then please check out my other resources!



(Click on the pictures)

You'll love them!!!



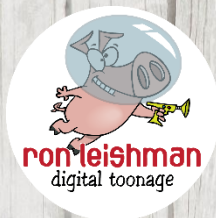
© 2017 Math in Demand. The download of my cheat sheet includes a limited use license from Math in Demand. You may only use the resource for personal classroom use.

Hence,

- 1.) This download does not allow you to transfer it to others such as another teacher, school, or district.
- 2.) You may not sell my cheat sheet.
- 3.) You may not place my cheat sheet on the internet.
- 4.) You may not sell, use, or distribute my clipart.

Violating these terms is against the Digital Millennium Copyright Act (DMCA).

## Credits



Media Icons by Grade ONEderful at:

<http://www.GradeONEderful.com>

Graphics by: [www.jessicasawyerdesign.etsy.com](http://www.jessicasawyerdesign.etsy.com)



<https://www.teacherspayteachers.com/Store/Glitter-Meets-Glue-Designs>

Font by:

<http://www.teacherspayteachers.com/Store/Courtney-Keimer>