



COMMERCIAL COOLING  
PAR ENGINEERING, INC



**Leading Manufacturer of Walk-in Coolers  
& Freezers since 1967**

Check out our company profile video at [https://  
www.youtube.com/watch?v=XiSasSfgdyo](https://www.youtube.com/watch?v=XiSasSfgdyo)

CommercialCooling.com | 17855 Arenth Ave. City of Industry, CA 91748 | 626.964.8700



## Commercial Cooling Walk-in Standard Features

Since 1967, Commercial Cooling has been providing the highest quality Walk-In Coolers and Freezers in the industry. Our facility features state of the art manufacturing equipment, allowing us to provide the finest quality products at competitive prices. With over 320 years of combined management experience, we can build our modular panels to any size or specification. We can turnaround a complete project in as a little as 2 weeks – sometimes less for rush orders -- where most walk-in box manufacturers take as long as 4-6 weeks. Most importantly, we proudly use only 100% U.S. made raw materials.

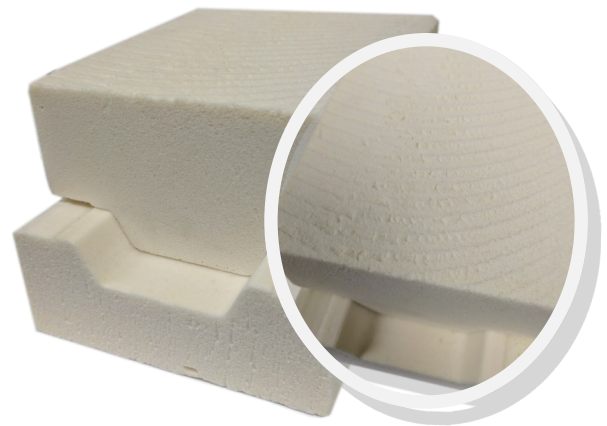
### ————— Panels and Insulation —————

#### Foam Rail Indents



While the gaps on the sides of the foam may not seem like something important, they actually are necessary. These gaps allow our machines to bend the exterior metal into the foam so when its stapled it does not extend outside the finished edges of the rail. This indent also allows for a tighter connection which prevents thermal transfer

#### Tongue and Groove Design



Our tongue and groove design is a cam-locking system that provides an air-tight seal between the panels, restricting thermal infiltration into the insulation core. The rough top on the rails is done to ensure that the foam rails have superior adhesion to the urethane foam.

### ————— High Density Foam Rails —————

Our high density foam rails are the optimal choice for manufacturing Walk-in panels. Here are the benefits:

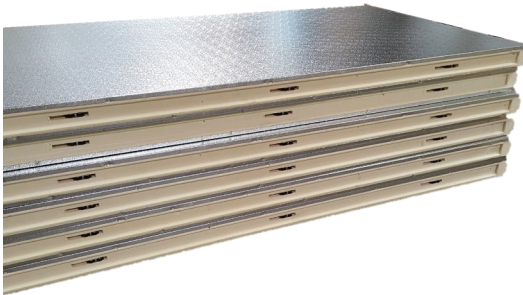
- Incredible flexural strength which eliminates the need for perimeter wood framing (old style construction).
- Panels can easily be made to exact size requirements. There are no restrictions to dimensions, such as perimeter and door location.
- Provides the architect and consultant the maximum design space use.
- Foam rails have better longevity and higher thermal efficiency.
- Our high density rail panel can withstand a temperature range from -65C to +85C (-85F to +185F) and is dimensionally stable.
- Foam rails do not warp, twist or deteriorate as wood can when exposed to moisture and cold.



# Commercial Cooling Walk-in Standard Features

## ————— Panels and Insulation —————

### Panel Construction



Panels are constructed of 3 1/2", 4", or 5". Panels can withstand a temperature range from -65C to +85C (-85F to +185F). Each Panel has an R-Value of 8 per inch exceeds EISA requirements.

### Cam Lock Mechanism



Our panels are connected by placing the tongue of one panel into the groove of the adjacent panel. The joints are sealed at both sides by NSF approved gaskets. Each one of our panels comes with a minimum of 3 Cam locks per panel.

## ————— Panel Finishes —————

We only use U.S. Steel and offer a wide variety of finishes including:



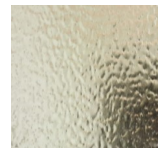
Stucco Embossed Galvalume  
26 Gauge



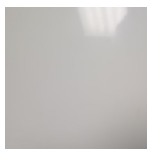
Stucco Embossed  
White Galvanized



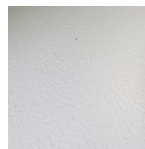
Stucco Embossed  
Aluminum .04



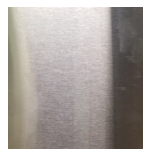
Stucco Embossed Galvanized 26 Gauge



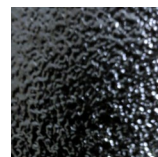
Smooth Aluminum  
White .04



Stucco Embossed White  
Aluminum .04



Stainless Steel 22 Gauge  
Type 304 Finish 4



Black Metal Galvanized



## Our Walk-in Doors

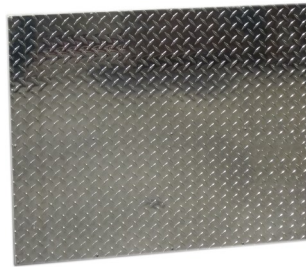
Commercial Cooling offers a wide variety of Walk-in doors and door accessories to ensure that doors meet customers expectations which include:

### Available Door Options

- ◆ Swing and Sliding Doors (Manual)
- ◆ Electric Sliding Doors
- ◆ Up to 10' x 10' Sliding Doors
- ◆ Up to 5' Wide Swing Doors.
- ◆ Flush or Overlap Doors
- ◆ View Windows
- ◆ Temperature Alarms
- ◆ Diamond Tread Kickplates
- ◆ Door Jambs
- ◆ Air Curtains
- ◆ Vinyl Strip Curtains
- ◆ Locking Bars
- ◆ Heavy Duty Threshold



*View Windows*



*Diamond Tread Kickplate*



*Temperature Alarms*

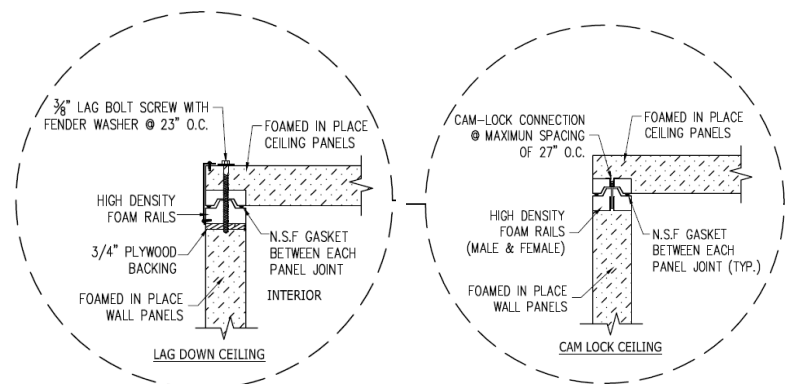
### Additional Features

In addition to Coolers and Freezers, we also offer:

- ◆ Auto-CAD Drawings.
- ◆ Engineering Seismic Calculations.
- ◆ Delivery & Installation.
- ◆ Replacement doors and panels.
- ◆ Base Coving and trim.

### Cam Down & Lag Down Ceilings

We also offer two different ceilings, lag down and cam down. View our drawing for a visual representation of the two.





## Quick Ship Boxes

### Walk-in Boxes Made Easy and Affordable

Quick Ships come in following nominal sizes: 6x6x8 (cooler); 8x8x8 (cooler); 8x10x8 (cooler); 8x12x8 (cooler); 8x8x8 (freezer); 8x10x8 (freezer); 8x12x8 (freezer); 8x12x8 (cooler/freezer combo). All feature overlap doors with 3 1/2" Panels (Cooler) and 4" Panels (Freezer and Combo) and 4" lag down ceilings.

These boxes are always in stock and the pricing includes remote refrigeration system along with all the components needed to get the box running.

## Our Quality Control Check

We hold all our walk-in boxes to the highest quality. That is why we assemble, photograph, and inspect our boxes using our 7-point inspection quality control list to ensure that each box meets our quality standards. **Commercial Cooling is the only company in the country that uses such quality control measures prior to shipment.**

### 7-Point Inspection Checklist

- We check the drawing of the box and ensure that the box was manufactured to exact specifications.
- We inspect the metal finish and foam rails to ensure that they are free of any defects.
- We check the door(s) for proper fit & finish and test air vent(s) and electrical wiring.
- We inspect the walk-in panels and ensure they are not scratched, dented or defective in any way.
- We assemble the panels and ensure they lock together and check for any gaps or other defects.
- We check to make sure all accessories are included with the shipment (Screws, trim and other loose parts).
- The quality control manager performs one last inspection checks again to make sure everything is included in the parts box.



Refrigeration O.E.M. for:



**Russell**

**Turbo** REFRIGERATOR MANUFACTURER  
**air**

Glass Door O.E.M. for:



Walk-in Accessories

Commercial Cooling is proud to be an official O.E.M supplier for Kason, Component, and Weiss Hardware.

Accessories



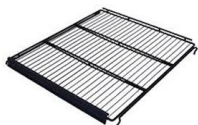
*Thermometers*



*Vapor Proof LED Lights*



*4' LED Lighting*



*Adjustable Shelving*



*Weiss Alarms*



*Dial Thermometer*



## GO GREEN WITH COMMERCIAL COOLING.

We care about the environment so we are taking the initiative to ensure that we reduce our carbon footprint and make the world a much safer and healthier place for everyone.

### ◇ Polyurethane insulation

The polyurethane foam we use has ZONE3 zero-ozone-depleting blowing agents that do not emit volatile organic compounds (VOCs). In addition, our polyurethane foam has recycled content of approximately 7% and contains Zone3 which is a zero ozone depleting agent. The use of refrigeration panels made with polyurethane foam reduces the amount of energy needed to maintain temperatures inside our Walk-ins. Less energy use translates into fewer carbon di-

### ◇ Fully compliant with the 2009 EISA requirements.

Commercial Cooling's walk-in boxes exceed all requirements of the Federal Energy Independence and Security Act of 2007. The act states that insulation of walls, ceiling and doors is to be of at least R-25 for Coolers and R-32 for Freezers. It also states that floor insulation should be of at least R-28 for freezers.

### ◇ American Metal.

We are proud to use U.S. made steel that contains a range of recycled metal content between 75—92 %. Our vendors are similarly committed to reducing their environmental footprint and improving the sustainability of their products.





## Unique Features

- ◆ Shortest lead times with 100% on time shipping.
- ◆ Manufactured using 100% U.S. made materials.
- ◆ Management team with over 350 years of refrigeration experience.
- ◆ 7-Point Inspection in which we stand-up and photograph every walk-in before shipment.

## Commercial Cooling Testing & Approvals

- ◆ Panels Certified to NSF/ANSI Standard #7.
- ◆ U.L. Certified Panels
- ◆ SGS US Testing Company, Inc. Report Number 740813-1
- ◆ Flame spread and smoke developed per UL-723, ASTM E84-95b, ANSI/NFPA No. 255, and UBC No. 8-1.
- ◆ 2007 Federal Energy Independence & Safety Act (EISA) compliant
- ◆ Los Angeles Research Report Number 25314.
- ◆ City of Los Angeles Approved Fabricator Certificate # 2055
- ◆ California Energy Commission (CEC) Title 20 compliant.
- ◆ City of Houston Fabricator's Certificate # 772
- ◆ Oregon Insignia of Compliance-Manufacturer # M564
- ◆ Hawaii Compliant
- ◆ City of Seattle Compliant







## Contact Information

**John Milani - Owner/CEO**

johnmilani@commercialcooling.com

Office: 626.964.8700 Ext: 22

Cell: 714.553.8630

**Douglas Vickers - President**

douglas@commercialcooling.com

Office: 626.964.8700 Ext: 23

Cell: 714.797.0355

**Farzad Milani - Vice President of Business Development**

farzad@commercialcooling.com

Office: 626.964.8700 Ext: 24

Cell: 626.347.2516

**Jeff Southworth - Sales Manager**

jeff@commercialcooling.com.

626.964.8700 Ext: 59

**Jenny Le - Sales Engineer**

jenny@commercialcooling.com

626.964.8700 Ext: 26

**Jake Cherry - Senior Technical Consultant**

jacobcherry@msn.com

Cell: 818.648.9868

**Jim Connor - National Accounts / Special Projects Manager**

jim@commercialcooling.com

Cell; 909.204.0470

**Steven Vong - Scheduling Supervisor**

steven@commercialcooling.com

626.964.8700 Ext: 28

**Valerie Barela—Freight Coordinator**

valerie@commercialcooling.com

626.964.8700 Ext: 58

**Kathy Mo - Accounts Receivable Manager**

kathy@commercialcooling.com

626.964.8700 Ext: 29

**Jacky Vong - Accounts Payable Manager**

jacky@commercialcooling

626.964.8700 Ext: 64

**Janet Ruvalcaba - Executive Assistant to the CEO & President**

janet@commercialcooling.com

626.964.8700 Ext: 30

**[www.commercialcooling.com](http://www.commercialcooling.com)**

**Copyright 2017 Commercial Cooling,  
Par Engineering Inc.**