

CHESAPEAKE SHERIFF'S OFFICE

Chesapeake, Virginia



2015 Annual Report

**Chesapeake Sheriff's Office
P.O. Box 15125
Chesapeake, Virginia 23328
(757) 382-6159**

TABLE OF CONTENTS

Greetings from Sheriff Jim O'Sullivan	3
Mission Statement	4
Law Enforcement Code of Ethics	5
Administration Division	6
Operational Budget	6
Auxiliary Deputy Corps.....	6
Victim/Witness	7
Special Projects	8
Corrections Division	9
Corrections Section	9
Support Services Section.....	10
Work Force Section	11
Court Services Division	12
Criminal Apprehension	12
Civil Enforcement	12
Court Security	12



SHERIFF JIM O'SULLIVAN

Dear Citizen:

The Chesapeake Sheriff's Office strives to provide the Citizens of Chesapeake with the high quality of services. The Sheriff's Office employs more than 380 trained individuals who strive to perform at the highest levels of excellence. Let us take this opportunity to express our pride in protecting you, the fine citizens of Chesapeake. It is our desire for the safest living environment for not only our children and elderly but every person.

I am proud to present this 2015 Annual Report which provides statistical information regarding the Office as well as highlights and accomplishments of the year. I welcome and appreciate any feedback that you may have regarding this report.

Sincerely,

A handwritten signature in black ink that reads "Jim O'Sullivan". The signature is written in a cursive, flowing style.

Jim O'Sullivan
Sheriff



Chesapeake Sheriff's Office

Mission Statement



“It is the mission of the Chesapeake Sheriff’s Office to provide our citizens with high quality law enforcement services, in an ethical and fiscal responsible manner.”

As we endeavor to accomplish our mission, we acknowledge the following:

- The Chesapeake Sheriff’s Office exists because of the community we serve. We are an organization of professionals committed to providing the highest level of law enforcement service in a sensitive and positive manner to all.***
- We recognize the value of human life and the dignity of all people, and strive to treat those with whom we come in contact with fairness, compassion and respect.***
- We recognize the importance of working together as members of the Sheriff’s Office to maintain a work environment which promotes trust, faith, respect and interpersonal support for all.***
- The badge is a symbol of public trust that we wear with great pride. With this in mind, we believe it is incumbent upon each of us to adhere to a high ethical standard to maintain the confidence of the citizens of the City of Chesapeake.***
- Our Office mission statement characterizes the position we hold. We are committed, in partnership with the citizens of the City of Chesapeake, to the creation of mutual trust and understanding, which will allow us to work together in preventing crime, in resolving mutual concerns and in establishing a safe and secure living environment.***



Law Enforcement Code of Ethics

As a law enforcement officer, my fundamental duty is to serve the community; to safeguard lives and property; to protect the innocent against deception, the weak against oppression or intimidation and the peaceful against violence or disorder; and to respect the constitutional rights of all to liberty, equality and justice.

I will keep my private life unsullied as an example to all and will behave in a manner that does not bring discredit to me or to my agency. I will maintain courageous calm in the face of danger, scorn or ridicule; develop self-restraint; and be constantly mindful of the welfare of others. Honest in thought and deed both in my personal and official life, I will be exemplary in obeying the law and the regulations of my department. Whatever I see or hear of a confidential nature or that is confided to me in my official capacity will be kept ever secret unless revelation is necessary in the performance of my duty.

I will never act officiously or permit personal feelings, prejudices, political beliefs, aspirations, animosities or friendships to influence my decisions. With no compromise for crime and with relentless prosecution of criminals, I will enforce the law courteously and appropriately without fear or favor, malice or ill will, never employing unnecessary force or violence and never accepting gratuities.

I recognize the badge of my office as a symbol of public faith, and I accept it as a public trust to be held so long as I am true to the ethics of police service. I will never engage in acts of corruption or bribery, nor will I condone such acts by other police officers. I will cooperate with all legally authorized agencies and their representatives in the pursuit of justice.

I know that I alone am responsible for my own standard of professional performance and will take every reasonable opportunity to enhance and improve my level of knowledge and competence.

I will constantly strive to achieve these objectives and ideals, dedicating myself before God to my chosen profession . . . law enforcement.

All Deputies are required to abide by the Law Enforcement Code of Ethics as adopted by the Chesapeake Sheriff's Office and the International Association of Chiefs of Police.

ADMINISTRATION DIVISION

The Administration Division is comprised of the following sections:

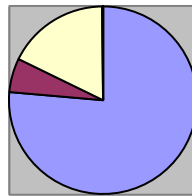
- Public Information
- Victim Witness
- Auxiliary Deputy Corps
- Training Academy
- Budget, Personnel, and Procurement
- Elderly Victims Assistance Program
- Special Projects
- Assets & Supply
- Development and Accreditation
- Information Technology

Sheriff's Office Operational Budget

The Sheriff's Office operates on a budget of \$39,131,405.89. Below listed is a breakdown of this budget:

Monetary Breakdown of budget:

Payroll and Benefits	\$29,711,095.00
Controlled Expenses	\$2,293,042.00
General Expenses	\$7,009,513.89
Capital Outlay	\$117,755.00
TOTAL BUDGET	\$39,131,405.89



■ Salaries & Benefits
■ Controlled Expenses
■ General Expenses
■ Capital Outlay

Auxiliary Deputy Corps

The Auxiliary Deputy Corps is comprised of a group of volunteers that are dedicated to serving the citizens of Chesapeake. They are individuals that have one thing in common...dedication, professionalism, and a strong sense of community service in their hearts. Members are accepted into the Auxiliary Deputy Corps after they complete the application process and a background check. During their first six months they must complete a prescribed course of training and become certified by the training officer or their representative. Members are sworn in after six months of probation, completion of the training course, and upon the recommendation of the Auxiliary Major and Sheriff's Office Auxiliary Corps Coordinator. All members will be required to attend and pass a DCJS Auxiliary Deputy Academy when offered.

The Auxiliary Deputy Corps assists regularly with numerous functions of the Sheriff's Office. They provide security to a number of events held throughout the year, such as the American Indian Festival, the Chesapeake Jubilee, Chesapeake Wine Festival and many other community events. In 2015, the Auxiliary Deputy Corps participated in over 70 events throughout the city.

Victim/Witness

The Victim/Witness Section is a crucial part of the Criminal Justice System that provides support with understanding the court system, assistance for victims/witnesses with special needs, and information or referrals for needed services. Below listed are the statistics for this section in 2015:

Total Number of Victims Served:	2,589		
Total Number of Services Provided:	40,142		
Compensation Fund Applications Filed:	51		
Number of Initial Awards:	26	Amount:	\$30,383.83
Number of Supplemental Awards:	1	Amount:	\$ 1,862.55
		Total Amount:	\$32,246.38

Characteristics of Victims Served

GENDER		RACE		AGE	
Male	877	Caucasian	1242	Under 13	179
Female	1705	Black	1190	13 – 17	293
Unknown	7	Hispanic	40	18 – 29	832
		Asian	35	30 – 44	697
		Unknown	81	45 – 64	461
		Native American	1	Over 64	90
				Unknown	37

Type of Victimization

CRIME	
Homicide	8
Child Abuse	106
Child Sexual Abuse	127
Robbery	184
Assault	917
Domestic Violence	929
Sexual Assault	87
Other Crimes Against Person	85

Special Projects

Senior Support Services Seminar

The 27th Annual Senior Support Services Seminar was held at the Chesapeake Conference Center on April 7 and 8, 2015. The event is held to help educate seniors of the services and programs available to them in the City of Chesapeake. The event featured over 60 representatives from City and Government agencies, non-profit organizations, health care providers, and retail businesses. This event comes with no cost to seniors and was paid for by proceeds generated from the Sheriff's Annual Great American Food Fest. Over 800 seniors attended the event each day. Seniors were provided with free screenings for cholesterol, bone density, hearing, and glaucoma as well as numerous programs available to seniors.



Great American Food Fest

The 36TH Annual Great American Food Fest was held at the Chesapeake City Park on Thursday, October 1, 2015. This event is held annually on the first Wednesday in October each year. Over 4,000 people attended this event to enjoy plenty of fine foods from more than 50+ providers, live entertainment, and fireworks. Put on jointly by the Sheriff's Office and South Norfolk Ruritan Club, proceeds from this event benefit Sheriff and Ruritan community charities like the Elderly and Indigent Victims of Crime.



CORRECTIONS DIVISION

The Corrections Division is comprised of the following sections:

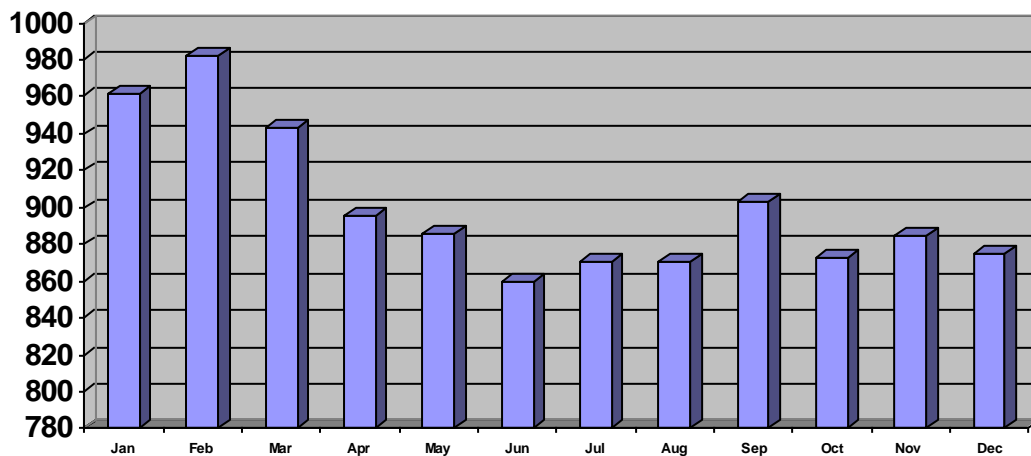
- Corrections
- Support Services
- Work Center
- Jail Standards

Corrections Section

The Corrections Section is responsible for the safe and secure operation of the Chesapeake Correctional Center. The facility is rated to house 557 inmates however for calendar year 2015 has operated at over double this rating. The Corrections Section is comprised of the following areas:

- Corrections
- Medical Services
- Commissary Services
- Food Services
- Maintenance
- Warehouse

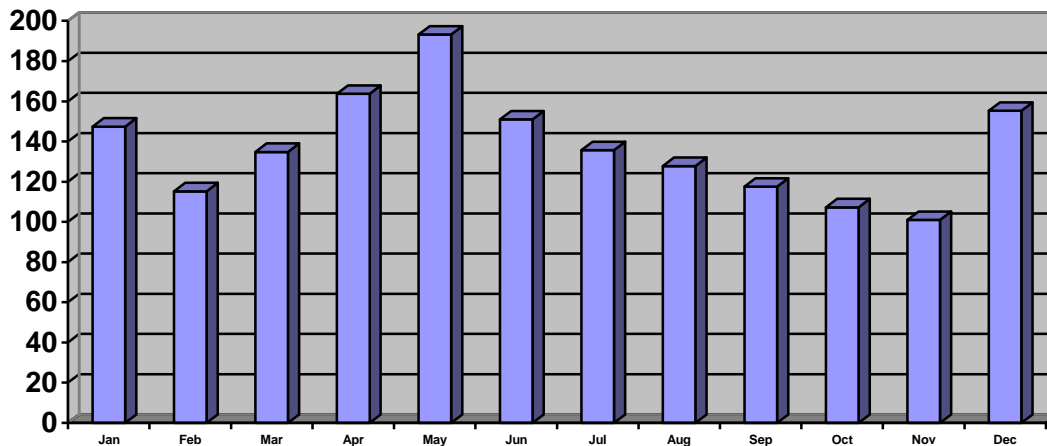
Below listed is the daily average Correctional Center population for each month of 2015.



Average Inmate Population – 2015

Weekend Programs

The Corrections Section operates the Weekend Day and Weekend Confinement programs. This program allows persons sentenced by the Court to serve their jail time during the weekend. Participants are ordered to this program by the Judges. Below listed is the weekly average for each month for the weekend programs for 2015. Each person sentenced to serve weekend confinement is charged \$7.00 per day.



Average Weekender Population – 2015

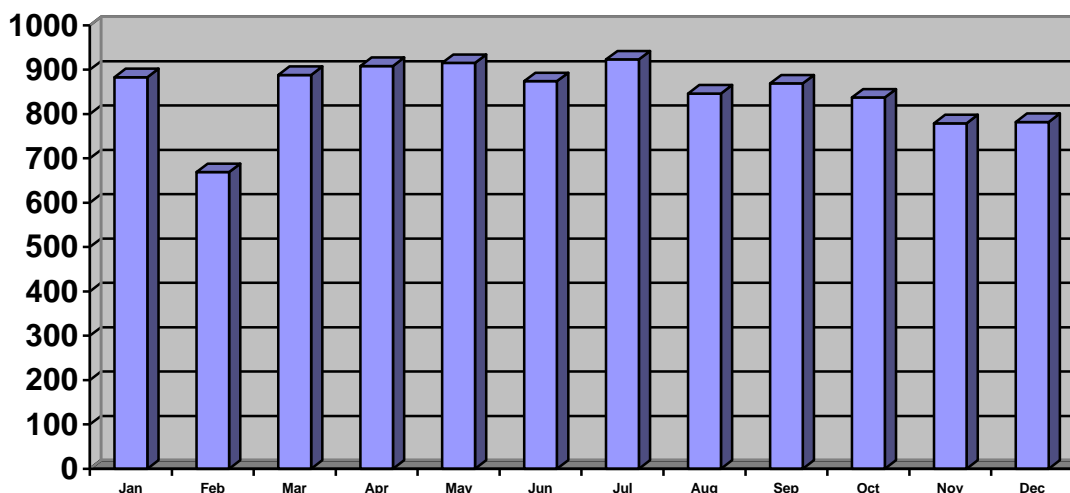
Support Services

The Support Services Section is responsible for the functions to support the operations of the Chesapeake Correctional Center, and is comprised of the following areas:

- | | | | |
|--------------------|-------------------|------------------|--------------------|
| - Booking (Intake) | - Classifications | - Lobby Security | - LIDS |
| - Inmate Records | - Transportation | - Recreation | - Special Programs |

Booking

The Chesapeake Correctional Center performed 10,173 bookings for 2015. The below listed are the number of bookings performed by the Booking section each month in 2015:



Bookings – 2015

The following programs are operated under the Support Services Section:

The Correctional Center Chaplaincy Program - This program is managed by a full-time chaplain and administrative assistant provided by the Chesapeake Jail Ministry. The chaplain and his volunteers provide religious counseling, services, and Bible studies to meet the spiritual needs of the inmates and staff of the Correctional Center and the Chesapeake Juvenile Services.

Chesapeake Integrated Behavioral Health Program - Assists with placement of severely mentally ill inmates in state hospitals or local mental health facilities. Additionally, the provide discharge planning and treatment for inmates released into the community thereby reducing the chances that they will return to incarceration.

Alcoholics Anonymous - Provides inmates with the opportunity to share their experiences, strengths, and hopes with each other and with community volunteers, in the hope they may solve their common problem and help others to recover from alcoholism.

Narcotics Anonymous - Provides inmates with a recovery process and support network inextricably linked together. One of the keys to Narcotics Anonymous success is the therapeutic value of addicts working with other addicts. Members share their successes and challenges in overcoming active addiction and living drug-free, productive lives through the application of the principles contained within the Twelve Steps and Twelve Traditions of Narcotic Anonymous.

Substance Abuse Program (Trauma Program) - Allows selected inmates the opportunity to receive treatment for their addiction to drugs and/or alcohol use. Inmates receive treatment through group and individual sessions designed to help them cope and overcome their addictions.

Nurture Block Program - A religious program and a substance abuse program that teaches and uses spiritual principles to empower the participants to change negative lifestyles. This program is for those who are serious about reaching their spiritual renewal or acquiring a spiritual awakening; about developing a positive character; and about building a spiritual faith community here in the Correctional Center, which will be carried back to our various neighborhoods and to family members.

Taking Control of Your Life Program - The program's goal is to help individuals build a platform for learning and put into practice basic reasoning, communication, and listening skills. This program also strives to help promote reading and build vocabulary skills prior to release, to better equip themselves for employment, while building self-confidence and first impression strategies.

The GED Program - This program is taught by the Chesapeake Adult Educational Services. Inmates are provided the opportunity to pursue their GED, including computer training through individual study, and classroom learning in the Correctional Center.

The Special Education Program - This program is in conjunction with the Chesapeake Public School System. It provides a program for continued education for eligible inmates with learning disabilities. This program has a full-time instructor who provides individual and educational services to inmates under the age of 21 years.

Chesapeake Correctional Center Re-Entry Program - This program is a ten-week course which is divided into two phases. The first phase starts with a therapeutic approach and classes on Parenting and Fatherhood/Family Reunification, AA/NA, Life Skills, and Mental Health and Recovery Awareness (designed to help offenders cope with inner self struggles). The last phase of the program switches to a curriculum that will aide in the transformation from incarceration to a productive member of society with the hopes of lowering recidivism. The topics presented, but not limited to, cover Business/Job Readiness, Resume/Interview Skills, Finance Skills, DMV Identification Process, and Employment Opportunities. All of which are proven systemic "triggers" or hurdles each participant encounters once released back into the community.

Work Force Section

The Work Force Section is responsible for all inmate work programs outside of the Chesapeake Correctional Center. The Work Force Section is comprised of the following areas:

- Work Force

- Work Release

- Home Electronic Monitoring

Work Force Program Totals:

CREWS	MANHOURS	Value of Work @ \$16.39/Hour
Stormwater Crews	71,380	\$1,169,918.20
Public Works Crews	18,438	\$302,198.82
SouthNorfolk Crew	6,891	\$112,943.49
Grass Cutting Crews	5,052	\$82,802.28
Public Safety Academy Crew	2,899	\$47,514.61
Parks and Recreation	6,062	\$99,356.18
Special Projects Crew	3,036	\$49,760.04
All Other City Departments	5,081	\$83,277.59
Total Man Hours Worked	118,839	\$1,947,771.21

In addition, Inmates assigned to the various work crews had credits applied for fines and cost. The 2015 total applied to fines and cost was \$676,186. (Hours figured at minimum wage)

Work Release Program Totals:

	Administrative Fees	Jail Board	Total Revenue
Program Revenue	\$2,850.00	\$80,724.00	\$83,574.00
	Fines and Costs Paid	Support to DCSE	
	\$3,924.18	\$15,124.62	

Home Electronic Monitoring Program Totals:

	Administrative Fees	Equipment Fees	Total Revenue
Program Revenue	\$1,480.00	\$51,691.00	\$53,171.00
	Equipment Rental Fee Paid by Program		Program Net
Program Expenses	\$81,108.05		<\$27,937.05>

Participants of the Home Electronic Monitoring Program paid a total of \$3,180.00 and participants of the Work Release Program paid a total of \$5,153.00, in both Spousal and Child Support.

COURT SERVICES DIVISION

The Court Services Division is comprised of the following sections/units:

- Civil Enforcement
- Project Lifesaver
- Court Security
- Criminal Apprehension Unit

Court Security

The Court Security Section is responsible for the Courthouse and Courtroom Security for the Chesapeake Circuit Court, Chesapeake General District Court, and Chesapeake Juvenile and Domestic Relations Court.

Court Information – 2015

COURT	NUMBER OF COURT DAYS
Circuit Court	1088
General District Court	943
Juvenile & Domestic Relations Court	684

Civil Enforcement

The Civil Enforcement Section received a total of 117,640 papers. Below is a breakdown of these papers:

LEVIES	1165
SHERIFF SALES	224
SUBPEONAS	65,363
SUMMONS	24,463
OUT OF STATE PAPERS	142
PROTECTIVE ORDERS	946
ALL OTHER CIVIL PROCESSES	23,337