



Chess Chatter

Newsletter of the Port Huron Chess Club

Editor: Lon Rutkofske September 2013 Vol.32 Number 9

The **Port Huron Chess Club** meets Thursdays, except holidays, from 6:30-10:00 PM, at Palmer Park Recreation Center, 2829 Armour Street, (NE corner of Garfield Street and Gratiot Ave...1 mile North of the Blue Water Bridge) Port Huron, Michigan. Everyone is welcome. All equipment provided. Website: <http://porthuronchessclub.volasite.com>

Noel Bedy Donates New Library Books

Kudos and applause to club member **Noel Bedy** for his generous contribution of chess books to the PHCC library. Noel and his wife are avid readers and book collectors, but as do those of similar persuasion, there is only so much space in the hacienda to accommodate the constant influx of new, exciting material, resulting in the paring away of those tomes that for whatever reason, have lost their luster and suffer the fate of being cast aside to make room for the new! As one who has been kicked to the curb in many a recent tournament, I understand their pain! Yet, even we rejects can benefit from Noel's generosity as I used a book line from the *Bird-Larsen Attack* by Andy Soltis to stymie Bill Wingrove in the recent August Mini-Swiss!

Noel's hefty donation has increased the club's library at least five fold and include a wide variety of recent, relevant volumes that can assist club members eager to improve their skills.

Wilkinson squeaks out a first place finish in the August USCF Rated Mini-Swiss.

Winning only a single game, Stew Wilkinson managed to win the first place money in the August Mini-Swiss by virtue of his crush of Lon Rutkofske in the reconstructed final round. Lon and Nathan Hartwig were in a position to share the first place money as Lon was scheduled to play Noel and Nathan would test his meddle against Stew in Round 3. Lon seemed to be on his way to at least a share of the first place money. Unfortunately, a scheduling conflict prevented Nathan from competing and he had to withdraw leaving the only a single pairing scenario left: Stew would faceoff against Lon and Noel would cross swords with Bill.

All this was set up in the first round by Bill's smashing win against Stew's pet French Defense, and Nathan's draw in a superior position against Lon. Stew's only win was the one that counted as his drubbing of Lon's poorly handled response to the Tarrasch French vaulting him into first place. As I said before ...sigh...kicked to the curb yet again!!!

See the **Member Games** section for the complete game scores!

Open - USCF Rated August Mini -- Wall Chart

#	Name/Rtng/ID	Rd 1	Rd 2	Rd 3
1	Stewart Wilkinson 1849 12454555	B 3	bye	W 2
		0.0	1.0	2.0
2	Lonnie Rutkofske 1813 10288347	W 4	W 3	B 1
		0.5	1.5	1.5
3	William Wingrove 1687 12161760	W 1	B 2	B 5
		1.0	1.0	1.5
4	Nathan Hartwig 1623 14836107	B 2	W 5	----
		0.5	1.5	U1.5
5	Noel Bedy 1557 12626193	bye	B 4	W 3
		1.0	1.0	1.5

Wilkinson Captures Double RR Speed Tourney Title

In Alan's absence PHCC's resident philosopher, teacher, author, and full time club advocate has been as busy as Blackbeard pillaging and plundering at will! In August's inaugural event, Swashbuckling Stew sent many a challenger spiraling downward to the bleak depths for a visit to Davy Jones' locker. Surrendering only a pair of paltry draws, this Port Huron pirate was the scourge of the crosstable .

As for the rest of us mates, Nathan Hartwig had a great showing, only dropping two to Stew and one to Noel. It was a pretty good turnout for the first event of the month, and we hope to see more participation as school begins in earnest and the tournament season commences.

August 2013 DRR Speed Tournament -- Wall Chart

#	Name/Rtng/ID	Rd 1	Rd 2	Rd 3	Rd 4	Rd 5
1	Lon Rutkofske 1880	2	4	3	5	6
		0.5	1.5	1.5	3.5	4.5
2	Stew Wilkinson 1871	1	6	4	3	5
		1.5	3.0	5.0	7.0	9.0
3	Nate Hartwig 1702	6	5	1	2	4
		1.0	3.0	5.0	5.0	7.0
4	Matt Morabito 1697	5	1	2	6	3
		2.0	3.0	3.0	5.0	5.0
5	Bill Wingrove 1623	4	3	6	1	2
		0.0	0.0	1.0	1.0	1.0
6	Noel Bedy 1475	3	2	5	4	1
		1.0	1.5	2.5	2.5	3.5

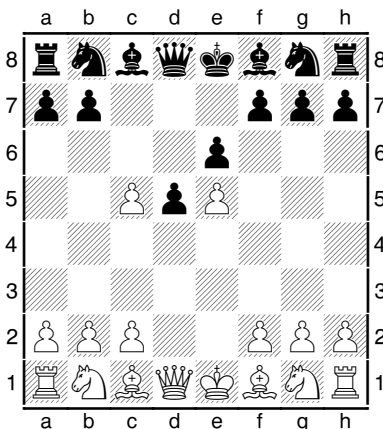


Wilkinson on Openings:

The French Defense: Advance Variation

Stewart Wilkinson is a USCF-rated Postal Master, a former Port Huron Chess Club champion and a consistently top performer in many PHCC events. He is especially noted for his in-depth analyses, collegiality, knowledge of opening theory and familiarity with players in the Port Huron Chess Club.

This month we will resume our discussion of the French Defense-Advance Variation, concentrating on 5...Bd7 in the main line. First However, let's look at White's offbeat options after 1.e4, e6 2.d4, d5 3.e5, c5 **4.dc5!?**



I have never faced this move in serious play, but White's idea is logical. After the standard 4.c3 his pieces are often passively placed. By vacating d4 White can develop freely, forcing Black to defend accurately. 4...Nc6 is the best reply, developing and attacking e5. (Note that the immediate 4...Bc5 runs into the annoying 5.Qg4! and Black has a tough choice. Fritz prefers 5...Ne7 over 5...g6, Bf8 or Kf8, but White has actively escaped the main lines.) After 4...Nc6 play might continue 5.Nf3, Bc5 6.Bd3 and Black can play the active 6...f6 or the positional 6...Nge7 with equal chances. Playable alternatives are 4...Qc7, Nd7, Ne7, Qa5+, and a6.

4.Qg4?! is a radical Nimzowitsch idea; overprotecting e5 with Nf3, Qg3, Bf4, and Re1. Black has two solid counters. 4...Nc6 5.Nf3 and either 5...Qa5+ or 5...cd4 with good play. 4...Qa5+ was played in Rabinovich-Botvinnik, Moscow 1937: 1. e4, e6 2. d4, d5 3. e5, c5 4. Qg4, Qa5 5. c3, cxd4 6. Qxd4, Nc6 7. Qf4, Nge7 8. Bd3, Ng6 9. Bxg6, hxg6 10. Nf3, Qa6 11. Ng5, Nd8 12. Nd2, Qd3 13. Nb3, b6 14. Bd2, Bd7 15. O-O-O, Rc8 with an edge to the future champion.

4.Nf3 Is common at the PHCC. 4...Nc6 invites transposition into the main line after 5...c3 or the aforementioned 4.dc5 lines. Playable alternatives include 4...cd4 5. Qb6, Ne7, Bd7, Qc7 or f6, but 4...Nc6 is logical and strong.

4.b4?! is a gambit best accepted by 4...cd4 5. A3 and Black stands well after 5...a5 or Nc6.

4. Be3 is interesting. I have faced it in speed games at the PHCC and against USCF postal masters. My usual reply has been 4...cd4 5. Bd4, Nc6 6.Nf3, Nge7=. Watson suggests 4...Qb6, citing Renaud-Hook, Dubai 1986: 1. e4, e6 2. d4, d5 3. e5, c5 4. Be3, Qb6 5. b3!?, Nc6 6.Nf3, cd4 7.Bd4, Nd4=. Fritz prefers 4...Ne7 or 4...Nc6, showing that Black has many viable options against 4. Be3.

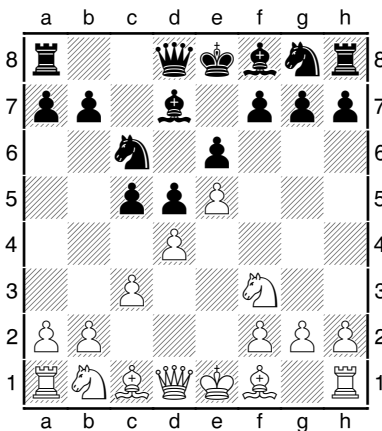
4.f4?! neglects development and commits the f-pawn. Black can play 4...cd4 but I like the idea of developing with 4...Ne7 or Nh6 eyeing the outpost at f5.

4.Nd2!? is a rarely seen option. Black should continue with his development as transpositions into Tarrasch positions favor him. In the Tarrasch ,e5 is played with the gain of tempo after Black has played Nf6.

4.Bf4? Qb6! And the cleric has been defrocked! The action is on the Queenside.

4.Bb5+? is an error, as is the placement of the Bishop on b5 in most variations of the French Defense. (*Exceptions are the Guimard Tarrasch and some 3.Nc3 positions.*) French Defense devotees from Alekhine to Rutkofske agree that the development of Black's Queen Bishop is a problem in the French. Therefore, White should strive to keep his King Bishop, not trade it for Black's *bête noire*. The weakness of Bb5 will be shown in the PHCC illustrative games.

As shown here, Black need not fear offbeat fourth moves in the Advance Variation, with the exception of 4.dc5!?. Now let's examine the main line with **5....Bd7**. 1.e4 e6 2.d4 d5 3.e5 c5 4.c3 Nc6 5.Nf3 Bd7!?



Often referred to as “Euwe’s move”, 5...Bd7!?. is now a main line thanks to the fertile mind of Victor Korchnoi. Black reasons that Bd7 will be a part of any Black system in the French Advance Variation. The move is therefore played early, waiting for White to commit to an offensive plan. The move is no better than the traditional 5...Qb6 but is more flexible. I chose to play it in USCF postal competition after reviewing the games of Victor Korchnoi and Boris Gulko. White can counter with many plans:

6.Na3 plans to protect d4 with a future Nc2 Black can choose any developing move. Watson champions 6...f6, but I feel that the direct 6...cd4 is solid: 7.cd4, Rc8 8.Nc2, Qb6 9. Bd3, Nb4 looks equal.

6.Be3 is associated with GM Kupreichik. Watson has analyzed the continuation in depth but 6...cd4 7.cd4, Qb6 8.Qd2, Nge7/Rc8 looks equal.

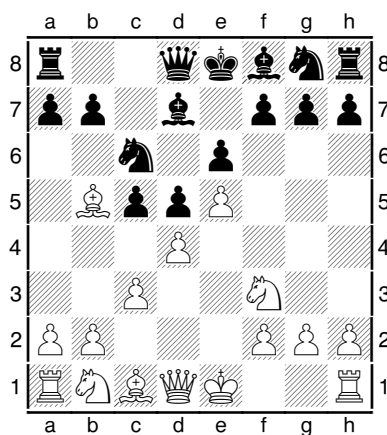
6.dc5 owes its recent popularity to innovations by GM Sveshnikov. Substantial theory has accumulated but Black's best course is probably 6...Bc5 . Sveshnikov originally continued 7.b4, but after 7...Bb6 8.b5, Na5 9.Bd3, Black looks fine with 9...Ne7 or Rc8, or with Watson's 9.Qc7. Today 7.Bd3 is more popular, but 7...Qc7 8.Bf4, Nge7 is solid for Black.

6.a3 has always been popular and I have seen it played in the PHCC. Most sources feel that the move is stronger in the 5...Qb6 variations. Watson recommends 6...f6 (*He has favored f6 at the earliest opportunity.*), but I have had success with 6...Nge7. Play might proceed with 7.Nbd2, cd4 8.cd4, Nf5 = Fritz considers the positions level after 6...Nge7.

6.Bd3 invites the Milner-Barry Gambit discussed last month in Broyles-Boucher, PHCC 2013 Championships.

6.Qb3, Nbd2, Bg5 are all sidelines rarely seen that don't retard Black's development.

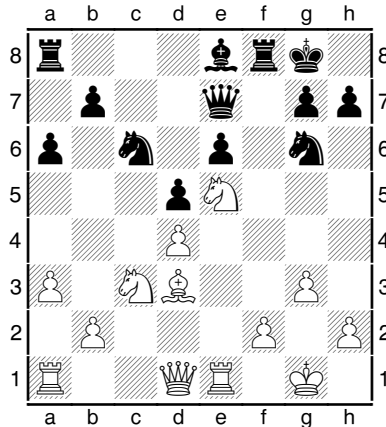
6.Bb5? was seen twice in last year's PHCC Tournament. Mariani-Wilkinson, PHCC 2013 Championships Round 3 :1.e4 e6 2.d4 d5 3.e5 c5 4.c3 Nc6 5.Bb5 Bd7 6.Nf3? and in Broyles-Wilkinson, PHCC 2013 Championships Round 8 1.e4 e6 2.d4 d5 3.e5 c5 4.c3 Nc6 5.Nf3 Bd7 6.Bb5?



In both games Black played 6...Ne5! and achieved a winning position.

6.Be2 is White's best move according to most theorists and is preferred by PHCC Champion Alan Gregg. In this year's championship tournament it was also the choice of former champion Bob Fiedler: Fiedler-Wilkinson, PHCC 2013 Championships Round 9 which saw: 1.e4 e6 2.d4 d5 3.e5 c5 4.c3 Nc6 5.Nf3

Bd7 6.Be2 ! Bob chooses a solid move aiming at rapid development. Black's best counters are: **6...Rc8** – the traditional response. Play might continue 7.00, cd4 8.cd4, Nge7 9.Nc3, Nf5 with a slight pull for White. Next comes: **6.cd4** with probably transpositions into the Rc8 lines. **6....f6!?** a provocative and perhaps premature sortie as witnessed by 7.00, fe5 8.Ne5, Ne5 9.de5 and White enjoys a significant edge in development. 6...Nge7 was the game continuation as recommended by Watson. 7.00, Ng6 8.Bg5, Be7 (f6!? Korchnoi) 9.Be7, Qe7 = 10.g3!? – Fritz questions this idea preferring piece development, but I like the move. White creates luft, controls f4, and threatens annoying Kingside expansion. 10...cd4 11.cd4.00 12. Nc3, a6 13.a3!? (.I had expected Bd3 or Qd3) 13....f6! 14.Bd3, Be8 15.Re1(Qe2= says Fritz)fe5 16.Ne5?! – Bob's first error, Bg6 keeps the position balanced.



16...Nce5? – Black misses the simple 16...Nge5 17 ce5, Qc5 with attack. The game ended in a Black win after mutual errors but the opening was exemplary of play in the French Advance until move 16.

This concludes our survey of the French Advance Variation, an opening rich in opportunities for imaginative chess for both White and Black. In the PHCC many players are associated with the French Defense: Rutkofske, Boucher, Mariani, Kulkarni, Roome and your author. I hope that these players and their future adversaries enjoyed this analysis.

How to set the new club digital chess clocks!

Sometimes when starting to set the clock, you will find that the display is not functioning or is frozen. If this happens, remove and replace the batteries, then click the on switch once again and this should solve the problem.

Lesson 5 – Other time controls: 3A, 3B, 3C

These three settings are really for use in other types of timed contests and are generally not used in club play.

3A is to be used in word games, where the clock hits zero after 30 minutes, but continues to show how long it took the contestant to make all of his moves in the game and is penalized for time used over his allotted 30 minutes.

3B is a simple stopwatch and renders elapsed time.

3C is employed when players elect to play at a rate of a move every 5 seconds.

Members' Games

Please send me what you consider your best games, annotated or not, so that I might be able to showcase them. The following games represent contests that have been available at the time of this printing. Email them to me or give them to me personally, if you wish. Majority of analyses is done by Fritz 12, unless otherwise indicated.

Gregg,Alan (2094) - Valentine,Brian (1923) [C78] Ruy Lopez

2013 British Senior Championships Torquay (1), 03.08.2013

1.e4 e5 2.Nf3 Nc6 3.Bb5 a6 4.Ba4 Nf6 5.0-0 Bc5 6.d3 b5 7.Bb3 d6 8.c3 h6 9.Be3 0-0 10.Qe2 Qe7 11.Nbd2 Bxe3 12.Qxe3 Na5 13.Bc2 c5 14.Rfe1 Nc6 15.Nf1 Nh5 16.d4 Nf4 17.Ng3 cxd4 18.cxd4 Qf6 19.dxe5 dxe5 20.Nf5 Ne7 21.Nxe7+ $\frac{1}{2}$ - $\frac{1}{2}$

Gosling,Brian (1945) - Gregg,Alan (2094) [C26] Closed Sicilian

2013 British Senior Championships Torquay (2), 04.08.2013

1.e4 e5 2.Nc3 Nf6 3.g3 Be7 4.Bg2 0-0 5.Nf3 d6 6.d3 Nc6 7.h3 Be6 8.0-0 h6 9.Re1 Nh7 10.Nd5 Qd7 11.Nxe7+ Nxe7 12.d4 exd4 13.Nxd4 Bxh3 14.Qh5 Bxg2 15.Kxg2 Nf6 16.Qe2 c5 17.Nb3 b6 18.f3 Ng6 19.Be3 d5 20.Rad1 Qe6 21.exd5 Nxd5 22.Bc1 Qxe2+ 23.Rxe2 Nf6 24.Rd6 Rfd8 25.Red2 Rxd6 26.Rxd6 Kf8 27.Rc6 Ne8 28.Nxc5 bxc5 29.Rxc5 Ke7 30.b3 f6 31.Ba3 Kf7 32.Rd5 Ke6 33.c4 Ne7 34.Rd4 Nc6 35.Re4+ Kf7 36.Bc5 Rd8 37.b4 Nd6 38.Re2 Nxc4 39.b5 Nd4 40.Re7+ Kg6 41.Bxd4 Rxd4 42.Rxa7 Rd2+ 43.Kh3 h5 44.Ra4 Nd6 45.Ra5 Rb2 46.a4 Nc4 47.Ra6 Ne5 48.g4 hxg4+ 49.fxg4 Rb3+ 50.Kg2 Nxc4 51.b6 Ne3+ 52.Kf2 Nc4 53.a5 Nxa5 54.Rxa5 Rxb6 55.Kg3 Rb4 56.Ra7 f5 57.Ra6+ Kg5 58.Ra7 Rb3+ 0-1

Gregg,Alan (2094) - Milnes,Anthony (2059) [A96] Dutch Defense, Classical Variation

2013 British Senior Championships Torquay (3), 05.08.2013

1.Nf3 e6 2.g3 f5 3.Bg2 Nf6 4.c4 Be7 5.0-0 0-0 6.Nc3 d6 7.d4 Ne4 8.Qc2 Nxc3 9.bxc3 Nc6 10.e4 e5 11.a4 f4 12.a5 Qe8 13.c5 Qh5 14.d5 Nd8 15.cxd6 cxd6 16.c4 Bg4 17.Ra3 Rf6 18.gxf4 exf4 19.Qb3 g5 20.Bb2 Rh6 21.h4 Bxf3 22.Qxf3 Qxf3 23.Rxf3 Rxh4 24.Rh3 g4 25.Rxh4 Bxh4 26.f3 g3 27.e5 dxe5 28.Bxe5 Rc8 29.Rc1 $\frac{1}{2}$ - $\frac{1}{2}$

Plater,Ronald (1878) - Gregg,Alan (2049) [E01] Catalan Closed Variation

2013 British Senior Championships Torquay (4), 06.08.2013

1.d4 Nf6 2.Nf3 e6 3.g3 d5 4.Bg2 Bd6 5.c4 c6 6.b3 0-0 7.0-0 Ne4 8.Bb2 f5 9.Nfd2 Nd7 10.f3 Nxd2 11.Nxd2 f4 12.g4 e5 13.Qe1 exd4 14.Bxd4 c5 15.Bf2 d4 16.Ne4 Nf6 17.h3 Nxe4 18.fxe4 Qe7 19.Qd2 Qe5 20.Bf3 h5 21.Be1 hxg4 22.hxg4 Bxg4 23.Rf2 Bxf3 24.exf3 a5 25.a4 Qh5 26.Qd3 Be5 27.Raa2 Rf6 28.Rh2 Qf7 29.Rag2 Rg6 30.Bd2 Rxc2+ 31.Kxc2 b6 32.Kh1 Re8 33.Qf1 Re6 34.Qh3 Rh6 35.Qc8+ Kh7 36.Qg4 Rxh2+ 37.Kxh2 Kh6 38.Qc8 Qh5+ 39.Kg2 Kh7 40.Qd7 $\frac{1}{2}$ - $\frac{1}{2}$

Gregg,Alan (2049) - Bennett,John (2008) [E62] King's Indian Defense-Fianchetto

2013 British Senior Championships Torquay (5), 07.08.2013

1.Nf3 Nf6 2.g3 g6 3.Bg2 Bg7 4.0-0 0-0 5.d4 d6 6.c4 Nc6 7.Nc3 Bf5 8.Nh4 Bd7 9.h3 Qc8 10.Kh2 e5 11.e3 Ne8 12.dxe5 Nxe5 13.Nd5 Qd8 14.Qe2 c6 15.f4 cxd5 16.fxe5 Bxe5 17.Nf3 Bg7 18.cxd5 Qb6 19.Rf2 Nf6 20.Nd4 Rae8 21.Qd3 Re7 22.a4 a6 23.b4 Rfe8 24.b5 axb5 25.axb5 Ne4 26.Bxe4 Rxe4 27.Rb1 R4e5 28.Qf1 f5 29.Qg2 Kh8 30.Rc2 f4 31.gxf4 Rh5 32.Ne6 Bxe6 33.dxe6 $\frac{1}{2}$ - $\frac{1}{2}$

Gamble, Raymond (2017) - Gregg, Alan (2094) [D05] Queen's Pawn Game

2013 British Senior Championships Torquay (6), 08.08.2013

1.d4 Nf6 2.Nf3 e6 3.e3 d5 4.Bd3 c5 5.c3 Nc6 6.Nbd2 Be7 7.0-0 0-0 8.dxc5 Bxc5
9.e4 Ng4 10.Qe2 Nce5 11.Nxe5 Nxe5 12.Bc2 Ng6 13.exd5 exd5 14.Nf3 Bd7
15.Qd3 Be6 16.Ne5 Qf6 17.Nxg6 hxg6 18.Qg3 Qd8 19.Be3 Qb6 20.Bxc5 Qxc5
21.Rfd1 Rfd8 22.Rd4 Rd7 23.Re1 Qb6 24.Rb4 Qa6 25.a3 Bf5 26.Bxf5 gxf5
27.Rh4 Qf6 28.Rd4 Rd6 29.h3 Rad8 30.Qd3 Qg5 31.Qe3 Qxe3 32.Rxe3 Re6 33.c4
Rxe3 34.fxe3 Re8 35.Rxd5 Rxe3 36.Rxf5 a6 37.Rf3 Re2 38.b4 Kf8 39.Rc3 Ke7
40.Kh2 Kd7 41.Kg3 Kd6 42.Rd3+ Kc6 43.Kf3 Re1 44.g4 Rc1 45.c5 a5 46.Rd6+
Kc7 47.Ke4 axb4 48.axb4 Rb1 49.Rd4 Rh1 ½-½

Gregg, Alan (2094) - Morton, Peter (1981) [C42] Petroff's Defense

2013 British Senior Championships Torquay (7), 09.08.2013

1.e4 e5 2.Nf3 Nf6 3.Nxe5 d6 4.Nf3 Nxe4 5.d4 d5 6.Bd3 Be7 7.0-0 0-0 8.c4 c6
9.Nc3 Nxc3 10.bxc3 dxc4 11.Bxc4 Bf5 12.Ne5 b5 13.Bb3 Bf6 14.Qf3 Qc8 15.Ba3
1-0

Rutkofske, Lonnie (1813) - Hartwig, Nathan (1623) [A36] Symmetrical English

2013 August USCF Rated Mini-Swiss Port Huron (1), 15.08.2013

1.c4 c5 2.Nc3 Nc6 3.g3 g6 4.Bg2 Bg7 5.d3 e5 6.e4 Nge7 7.Nge2 0-0 8.0-0 d6 9.h3
Rb8 10.Be3 h6 11.Qd2 Kh7 12.f4 Nd4 13.Rab1 a5 14.Bf2? Bxh3 15.Bxd4 Bxg2
16.Kxg2 cxd4 17.Nd1 f5 18.Nf2 fxe4 19.dxe4 b5 20.cxb5 Rxb5 21.Rh1 d5 22.fxe5
dxe4 23.Qxd4 Qxd4 24.Nxd4 Rxe5 [Draw Agreed] ½-½

Wingrove, William (1687) - Wilkinson, Stewart (1849) [C16] French Defense

2013 August USCF Rated Mini-Swiss Port Huron (1), 15.08.2013

1.e4 e6 2.d4 d5 3.Nc3 Bb4 4.e5 Ne7 5.a3 Bxc3+ 6.bxc3 b6 7.a4 Ba6 8.Bxa6 Nxa6
9.Qd3 Nb8 10.f4 Nbc6 11.Nf3 Na5 12.0-0 Nc4 13.Nd2 Nxd2 14.Bxd2 0-0 15.Rf3
f5 16.Be1 Nc6 17.Rh3 Na5 18.Bh4 Qd7 19.Qg3 Kh8 20.Bg5 Qf7 21.Qh4 g6
22.Bf6+ Kg8 23.Rg3 Nc4 24.Qg5 Nd2 25.Re1 Ne4 26.Rxe4 dxe4 27.h4 Rfe8 28.h5
Rac8 29.hxg6 hxg6 30.Qh6 1-0

Hartwig, Nathan (1623) - Bedy, Noel (1557) [B01] Scandinavian Defense

2013 August USCF Rated Mini-Swiss Port Huron (2), 22.08.2013

1.e4 d5 2.exd5 Qxd5 3.Nc3 Qd6 4.d4 Nf6 5.Nf3 g6 6.g3 Bg7 7.Bg2 Qa6 8.Bf4 c6
9.Qd2 Bg4 10.Ne5 Be6 11.Nd3 Nbd7 12.0-0 Qa5 13.Nd5 Qxd2 14.Nc7+ Kd8
15.Nxe6+ fxe6 16.Bxd2 Ne8 17.Nf4 Nc7 18.c3 e5 19.dxe5 Nxe5 20.Rfd1 Ke8
21.Bf1 Nf3+ 22.Kg2 Nxd2 23.Rxd2 Rd8 24.Rxd8+ Kxd8 25.Rd1+ Ke8 26.Bc4 e5
27.Ne6 Nxe6 28.Bxe6 Ke7 29.Rd7+ Kxe6 30.Rxg7 b5 31.Rxa7 h5 32.Rg7 Kf5
33.Rc7 Rd8 34.Rxc6 Rd2 35.Rb6 Rxb2 36.a4 Ra2 37.axb5 e4 38.Kf1 Kg4
39.Rxg6+ 1-0

Rutkofske, Lonnie (1813) - Wingrove, William (1687) [A02] Bird's Opening

2013 August USCF Rated Mini-Swiss Port Huron(2), 22.08.2013

1.f4 c5 2.b3 Nf6 3.Bb2 Nc6 4.Nf3 d6 5.e3 Bf5 6.Bb5 a6 7.Bxc6+ bxc6 8.0-0 e6
9.Nc3 Be7 10.Ne2 h6 11.Ng3 Bg6 12.d3 0-0 13.Qd2 Qb6 14.Kh1 a5 15.e4 Nd7
16.a4 f6 17.Rae1 e5 18.Nh4 Bf7 19.Nhf5 Rfe8 20.fxe5 Nxe5 21.Nxg7 Kxg7
22.Nf5+ Kg8 23.Bxe5 Qd8 24.Nxe7+ Qxe7 25.Bxf6 Qf8 26.Re3 Kh7 27.Ref3 Qg8
28.Bc3 Rf8 29.h3 d5 30.exd5 cxd5 31.Bxa5 Ra7 32.Bb6 Rd7 33.Bxc5 Rc8 34.Be3
Rdc7 35.c4 dxc4 36.bxc4 Rd8 37.Bb6 Rdc8 38.Bxc7 Rxc7 39.a5 Rd7 40.Qe3 Bg6
41.Qe2 Qd8 42.Rf8 Bxd3 43.Qe5 Qc7 44.Rh8+ 1-0

Bedy, Noel (1557) - Wingrove, William (1687) [D02] Queen Pawn Game

2013 August USCF Rated Mini-Swiss Port Huron (3), 06.09.2013

1.d4 Nf6 2.Nd2 d5 3.e3 g6 4.Ng3 Bg7 5.b4 0-0 6.Bb2 Nbd7 7.Be2 Re8 8.c4 c6 9.0-0 b6 10.a3 Bb7 11.cxd5 cxd5 12.Bb5 a6 13.Bd3 b5 14.Nb3 Nb6 15.Nc5 Bc8 16.Rc1 Bg4 17.h3 Bxf3 18.Qxf3 Nc4 19.Qe2 Ra7 20.a4 Nd7 21.axb5 axb5 22.Ra1 Rxa1 23.Rxa1 e5 24.Qc2 Ndb6 25.Bxc4 Nxc4 26.Bc3 exd4 27.Bxd4 Bxd4 28.exd4 Qe7 29.Qa2 Qe2 30.Kh2 Qb2 31.Qxb2 Nxb2 32.Ra5 Rb8 33.Nd7 Rd8 ½-½

Wilkinson, Stewart (1849) - Rutkofske, Lonnie (1813) [C10] French Defense

2013 August USCF Rated Mini-Swiss Port Huron (3), 29.08.2013

1.e4 e6 2.d4 d5 3.Nd2 dxe4 4.Nxe4 Nf6 5.Nxf6+ Qxf6 6.Nf3 Qd8 7.Bd3 Be7 8.0-0 Nd7 9.c3 0-0 10.Re1 b6 11.Qc2 g6 12.Bh6 Re8 13.Be4 Rb8 14.Rad1 Nf6 15.Bc6 Bd7 16.Ne5 Qc8 17.Bg5 Rd8 18.Nxd7 Rxd7 19.Bxd7 Qxd7 20.d5 1-0

PHCC Rating Lists

The following list represents only current members of the Port Huron Chess Club. Current USCF ratings were used for members that had them, in order to establish the initial club rating list. The USCF rating format is used as the basis for calculating our club rating list. Members that had no USCF ratings are given a provisional rating based on their performances against regular club members who had USCF ratings. Club rated events will use these ratings for pairing purposes.

PHCC Rating List as of 9/10/13

<u>Name</u>	<u>Rating</u>
Bruziewicz, Andy	2118
Gregg, Alan	1956
Wilkinson, Stew	1883
Rutkofske, Lon	1836
Morabito, Matt	1780
Jones, G. Avery	1684
Wingrove, Bill	1680
Fiedler, Bob	1646
Hartwig, Nathan	1644
Bedy, Noel	1636
Beneker, Gerrit	1545
Kulkarni, Atul	1513
Scholfield, Chris	1503
Boucher, Dave	1463
Mariani, Gino	1321
Rob Brown	1300
Archer, Kraig	1200
Carey, Jay	1000
Allen, Nathan	984
Nowiski, Adam	919
Kulkarni, Atharva	867

USCF Ratings as of 9/10/13

<u>Name</u>	<u>Rating</u>
Bruziewicz, Andy	2121
Gregg, Alan	2000
Wilkinson, Stew	1843
Rutkofske, Lon	1805
Morabito, Matt	1793
Fiedler, Robert	1713
Wingrove, Bill	1692
Hartwig, Nathan	1650
Jones, G. Avery	1588
Bedy, Noel	1565
Boucher, Dave	1335
Mariani, Gino	939P

PHCC Speed Rating List as of 9/10/13

<u>Name</u>	<u>Rating</u>
Bruziewicz, Andy	2248
Gregg, Alan	1962
Wilkinson, Stew	1911
Rutkofske, Lon	1829
Hartwig, Nathan	1772
Morabito, Matt	1701
Fiedler, Robert	1608
Jones, G. Avery	1590
Wingrove, Bill	1561
Scholfield, Chris	1552
Beneker, Gerrit	1550
Bedy, Noel	1543
Kulkarni, Atul	1513
Nowiski, Adam	1363
Mariani, Gino	1333
Carey, Jay	1000
Allen, Nathan	984
Kulkarni, Atharva	867
Archer, Kraig	750

Calendar of Events: Note the change for the First Thursday of Each Month.

First Thursday of Each Month - Chess Clinics– 6:30 to 7:00 PM - \$7.50 per person. From 7:00 until 10:00, Players wishing to play games with longer time controls up to G/90 can choose to play match games if they so desire. Participants will be paired randomly and colors will be selected by lot. PHCC club ratings will be used. Players should turn their game scores into Lon, so he can adjust ratings appropriately and showcase the games in *Chess Chatter*.

September 12 - PHCC Rated Round Robin – G/10 –rounds based on entries – PHCC membership required. EF: \$5 ...Prizes based on entries. A minimum of 4 participants will be necessary to hold the event. Please contact Lon via phone or email if you plan to register. Play begins at 7:00 PM.

September 19 – Brian Ledsworth/Matt Morabito PHCC Junior Mini-Swiss: 3 Rds. at G/30 – PHCC membership required. Top scorer will win a one year USCF membership, additional prizes based on entries. ! A minimum of 4 participants will be necessary to hold the event. Please contact Lon via phone or email if you plan to register. Play begins at 7:00 PM.

September 26 - PHCC Rated Double RR Speed Tournament – G/5 - rounds based on entries – PHCC membership required. EF: \$5 ...Prizes based on entries. A minimum of 4 participants will be necessary to hold the event. Please contact Lon via phone or email if you plan to register. Play begins at 7:00 PM.

Dues News:

While dues are not required for anyone interested in playing at the club, they are required for those competing in tournament play. Annual Dues are \$20.00 for adults and \$10.00 for those under 19. Dues funds are used to offset miscellaneous expenses not funded by the Recreation Department.

Expiring Memberships as of September 2013:

Brian Ledsworth, Matt Morabito