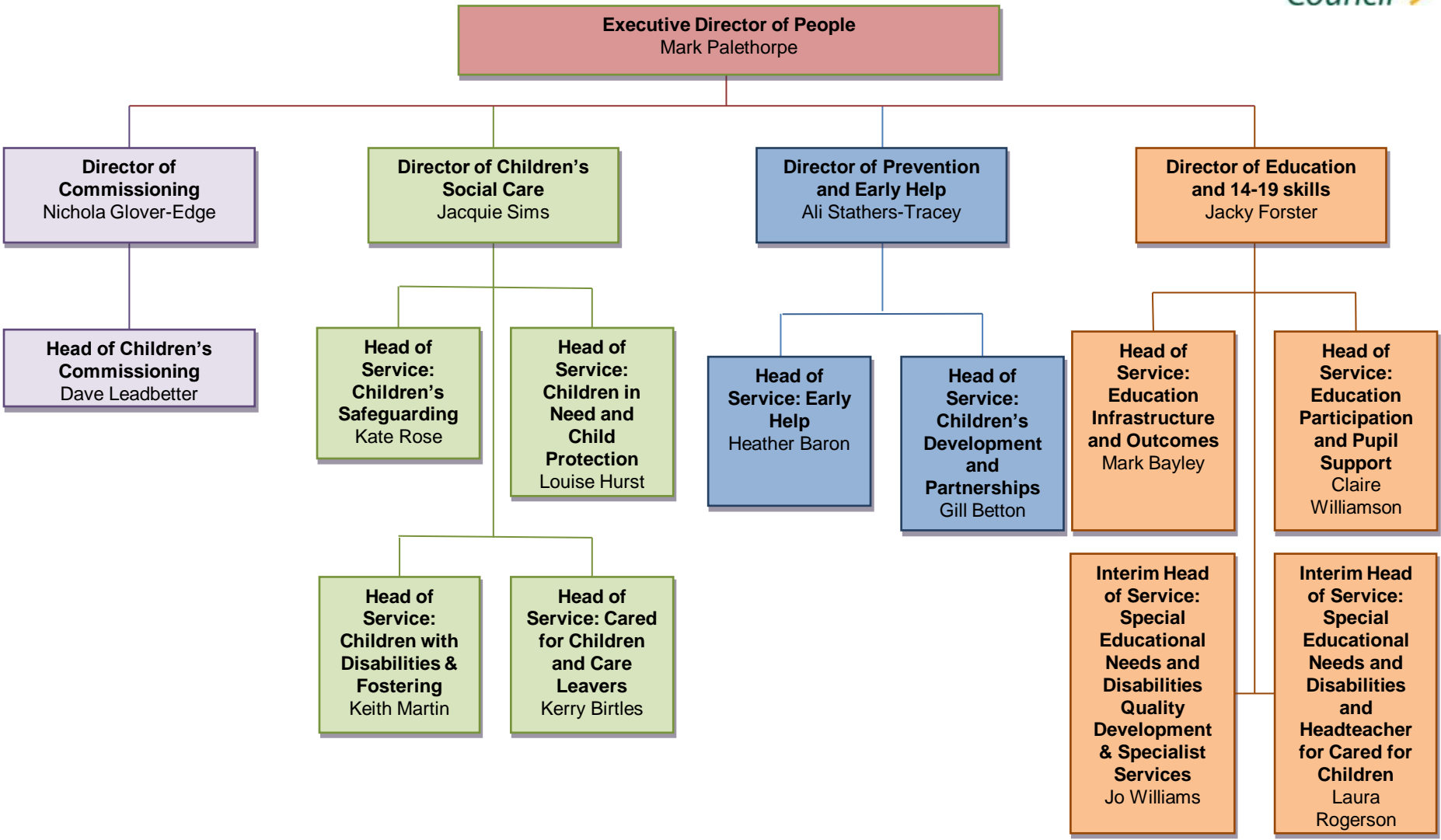


Children and Families Senior Leadership Team

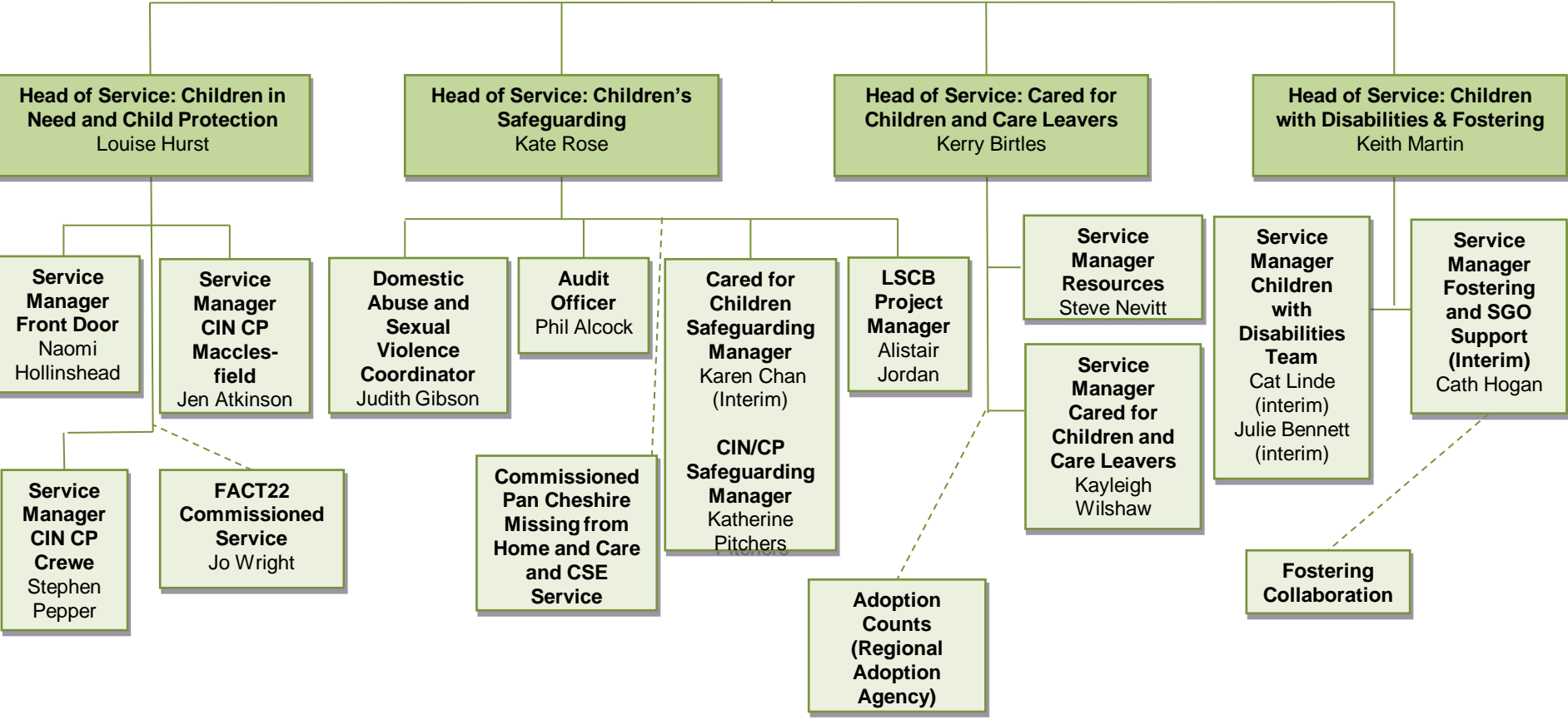


Children's Social Care



Senior Manager Support

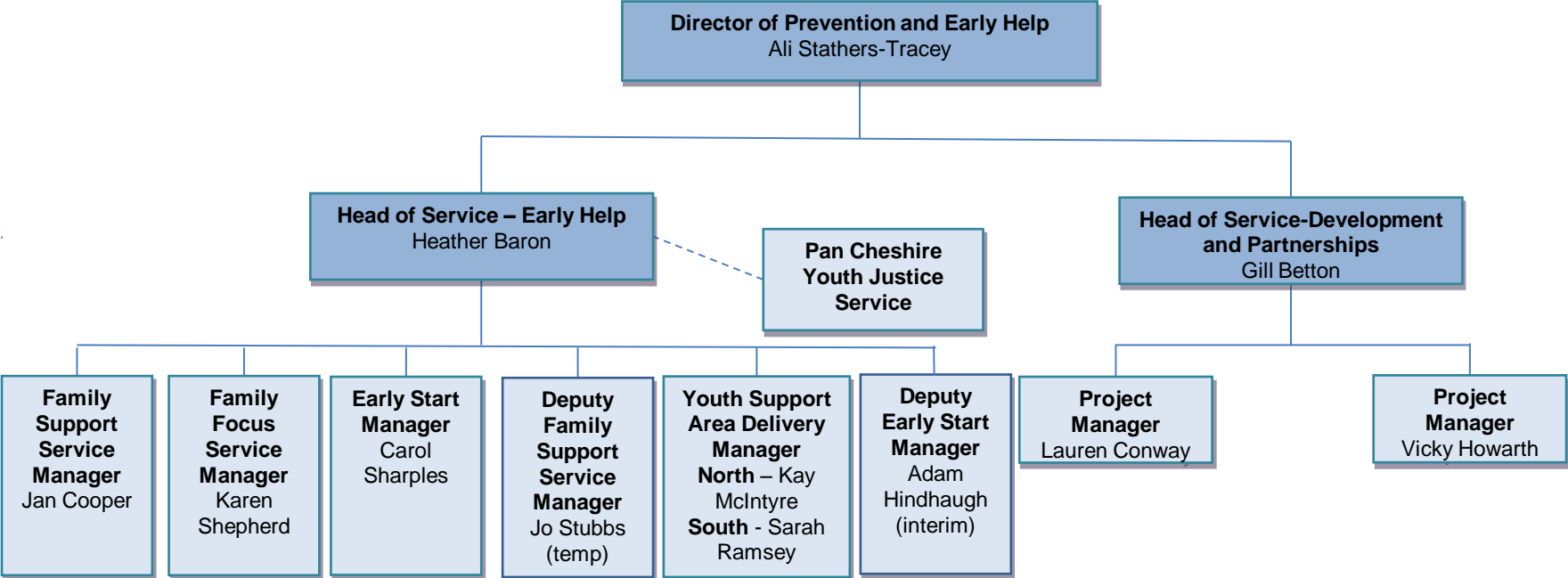
Director of Children's Social Care
Jacquie Sims



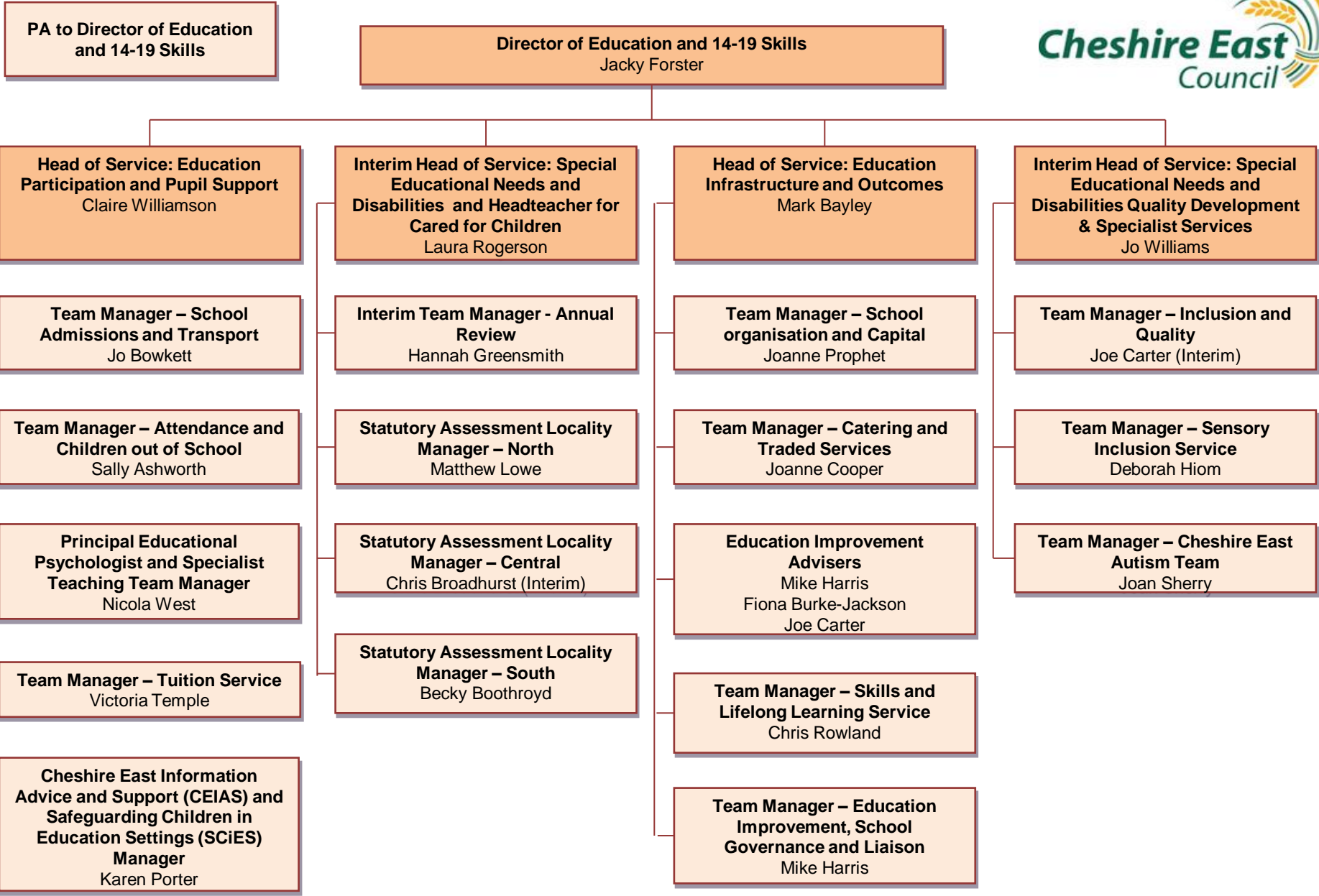
Prevention and Early Help



Senior Manager Support



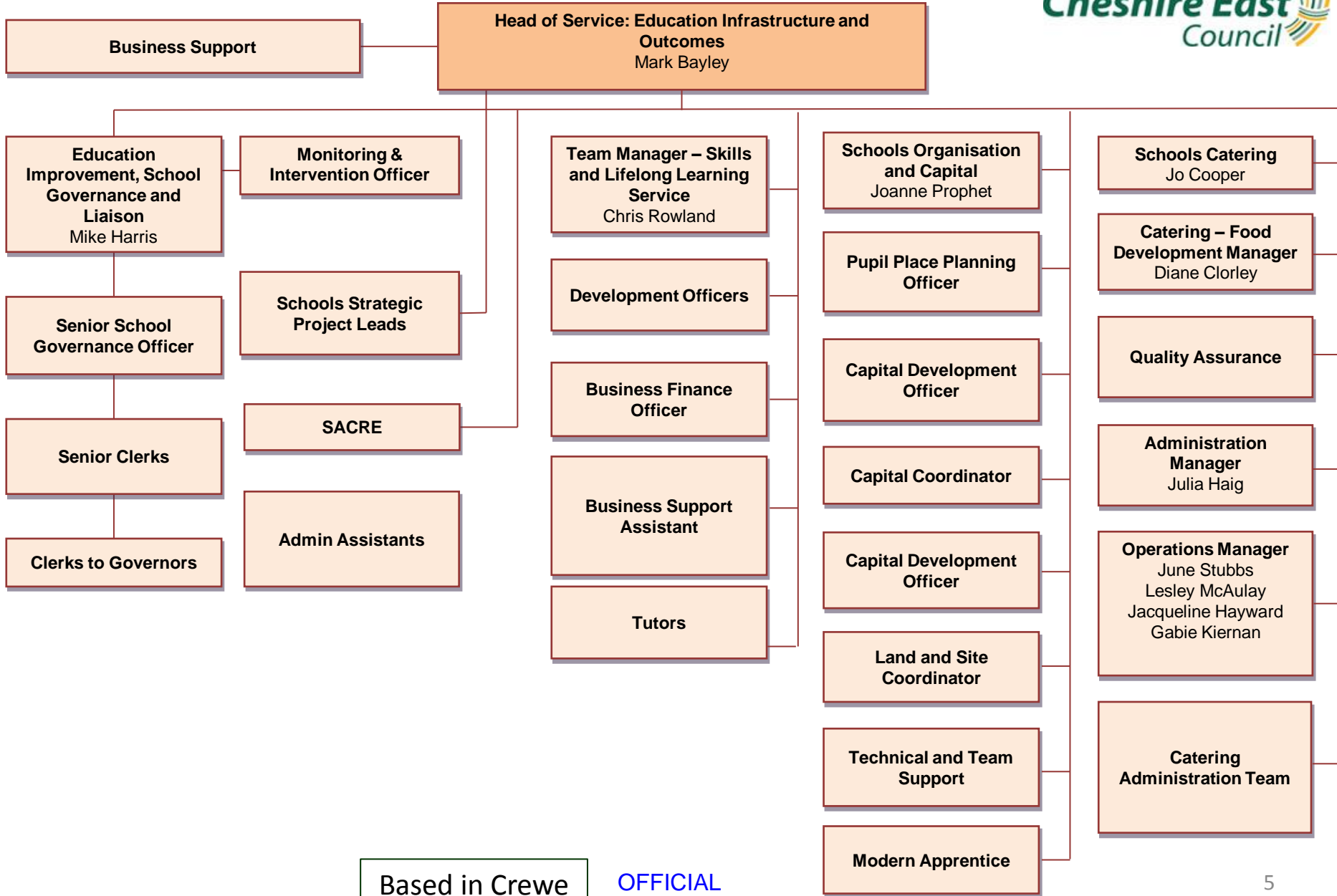
Education and 14-19 Skills



Based at Crewe/Macclesfield

OFFICIAL

Achievement and Attainment



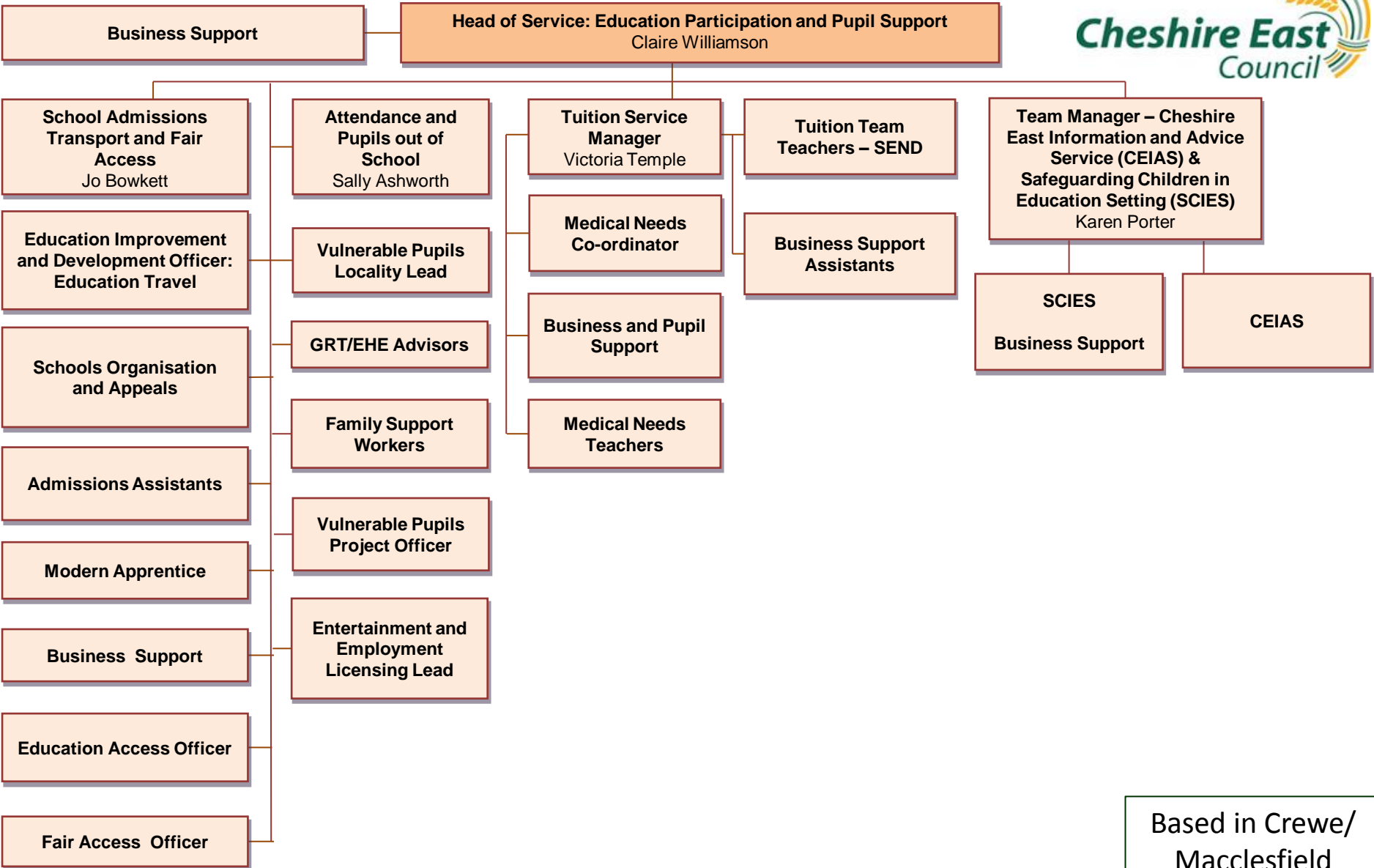
Based in Crewe

OFFICIAL

Education Participation and Pupil Support

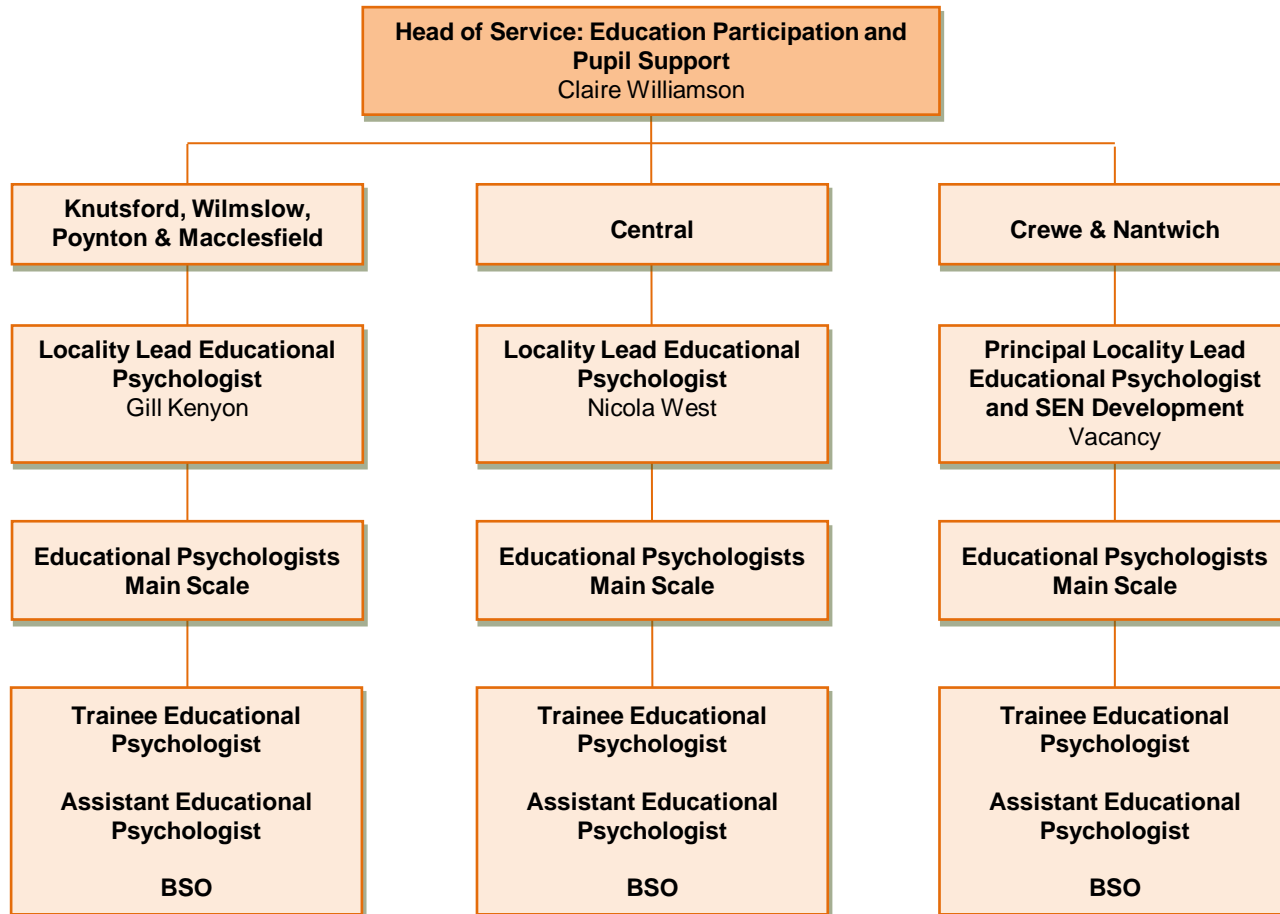


Cheshire East
Council



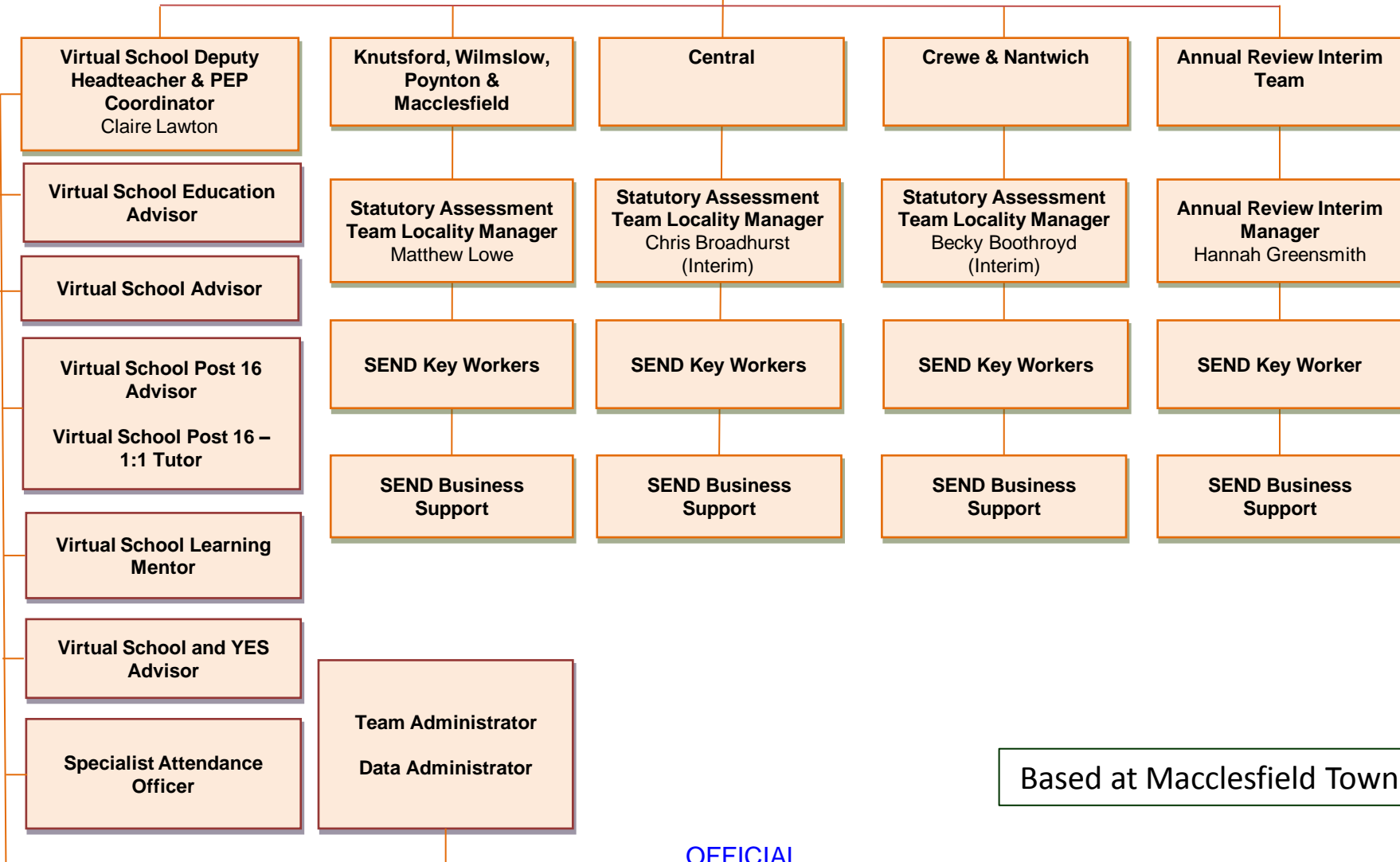
Based in Crewe/
Macclesfield

Special Educational Needs and Disabilities – Educational Psychology Service



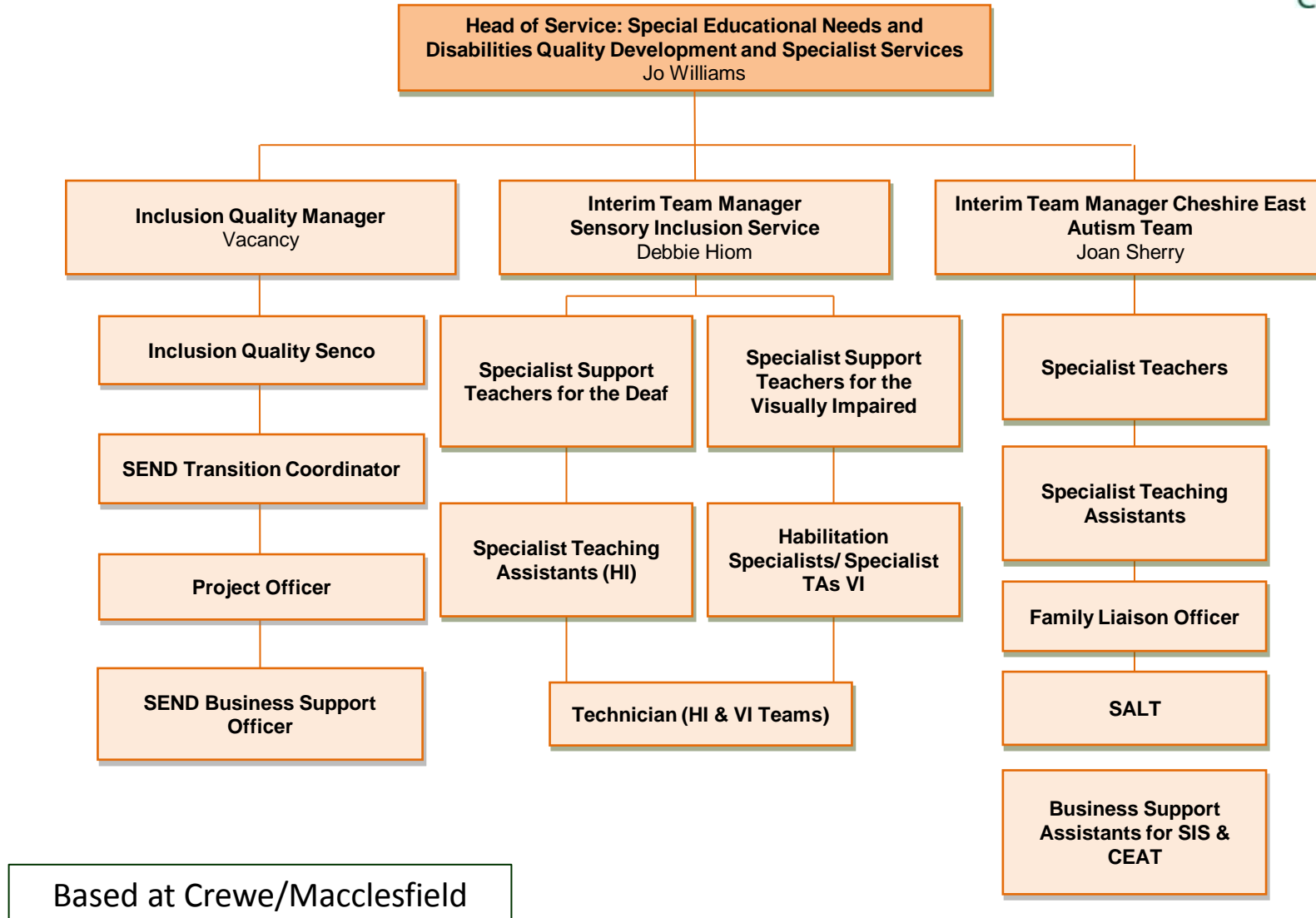
Special Educational Needs and Disabilities

Interim Head of Service: Special Educational Needs and Disabilities and Headteacher for Cared for Children
 Laura Rogerson

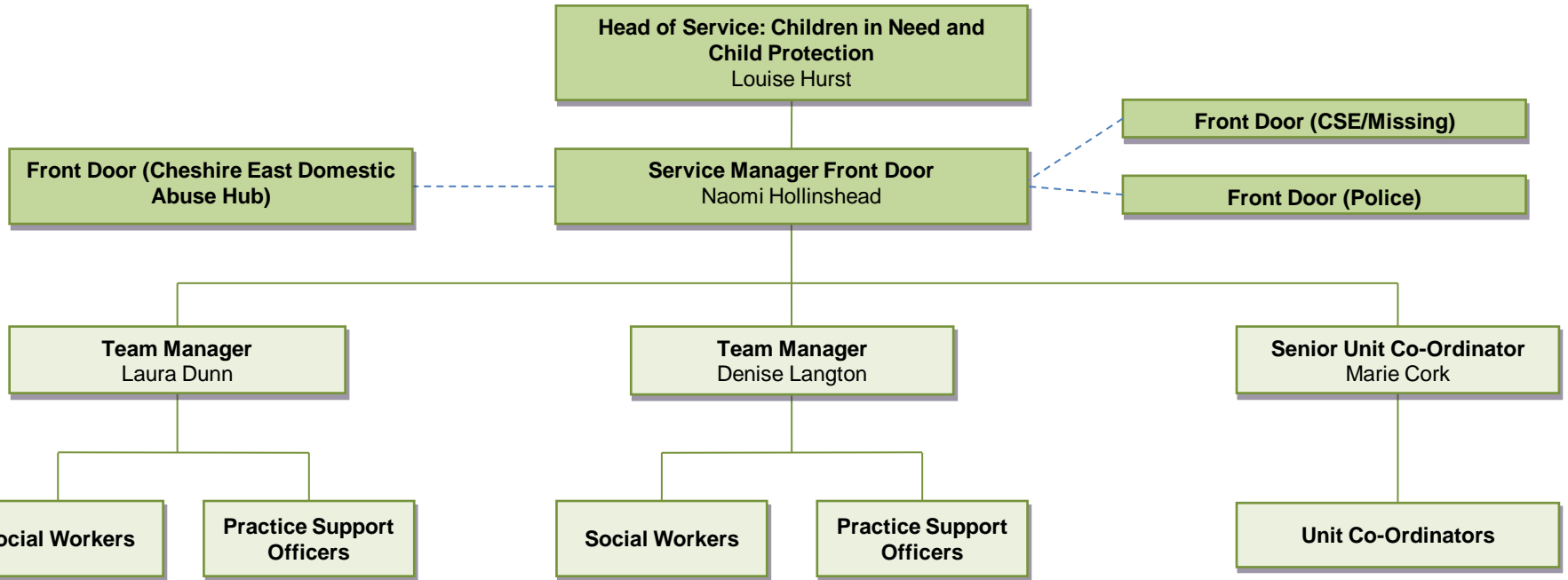


Based at Macclesfield Town Hall

Special Educational Needs and Disabilities Specialist Services

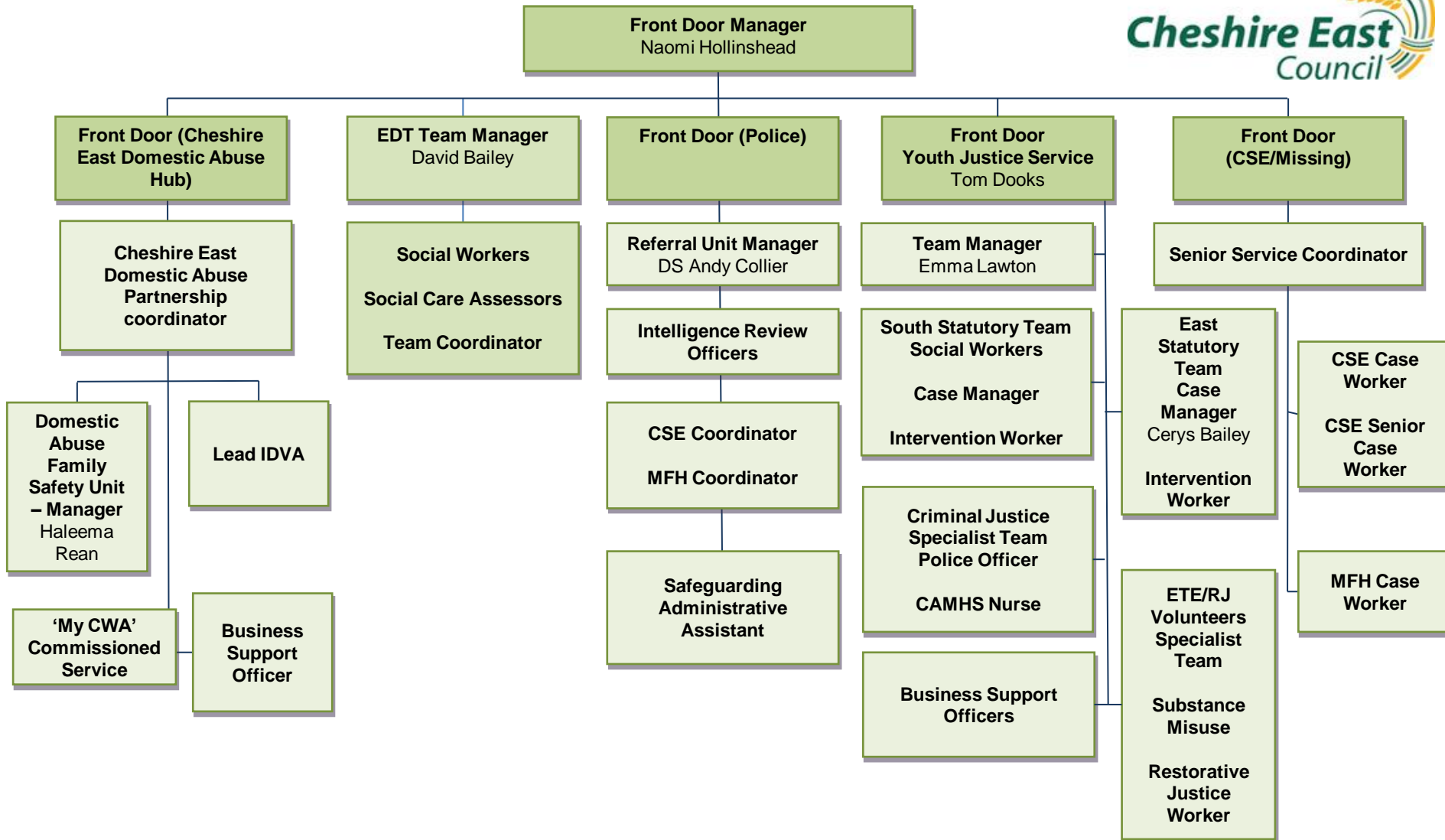


Cheshire East Consultation Service (ChECS)



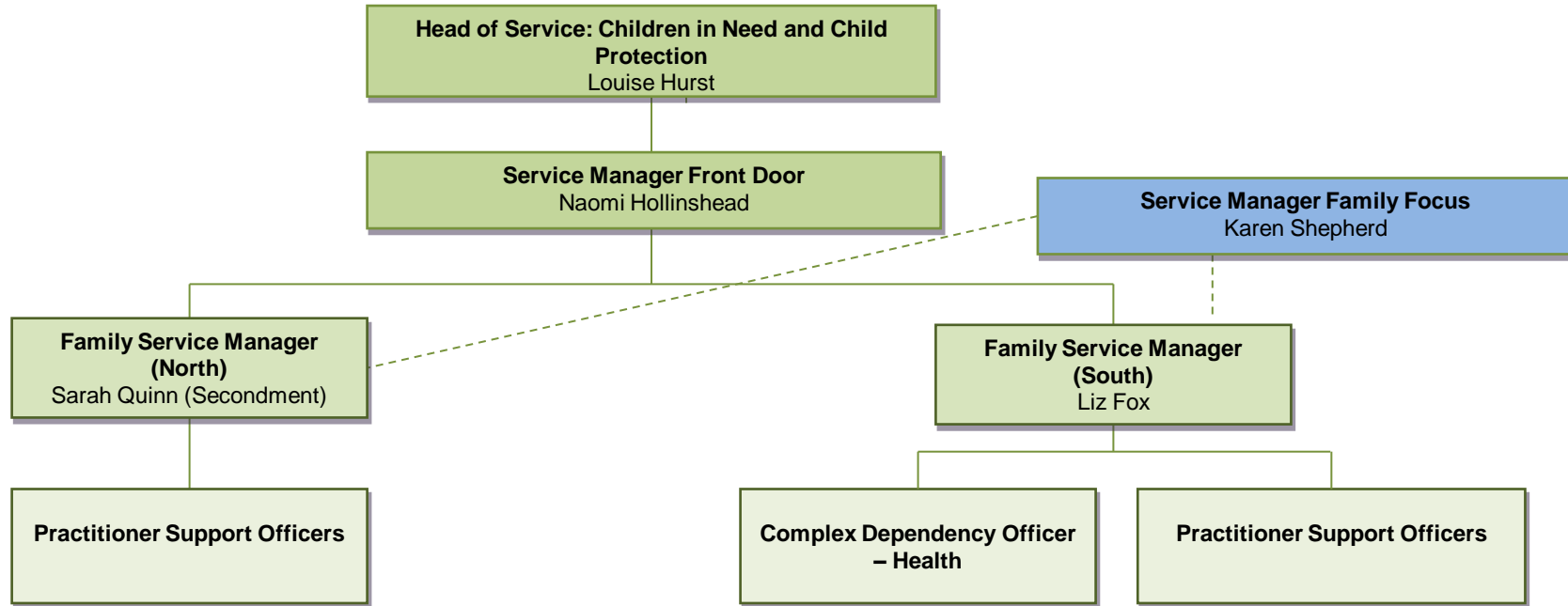
Based at Delamere House, Crewe

Cheshire East Consultation Service (ChECS)



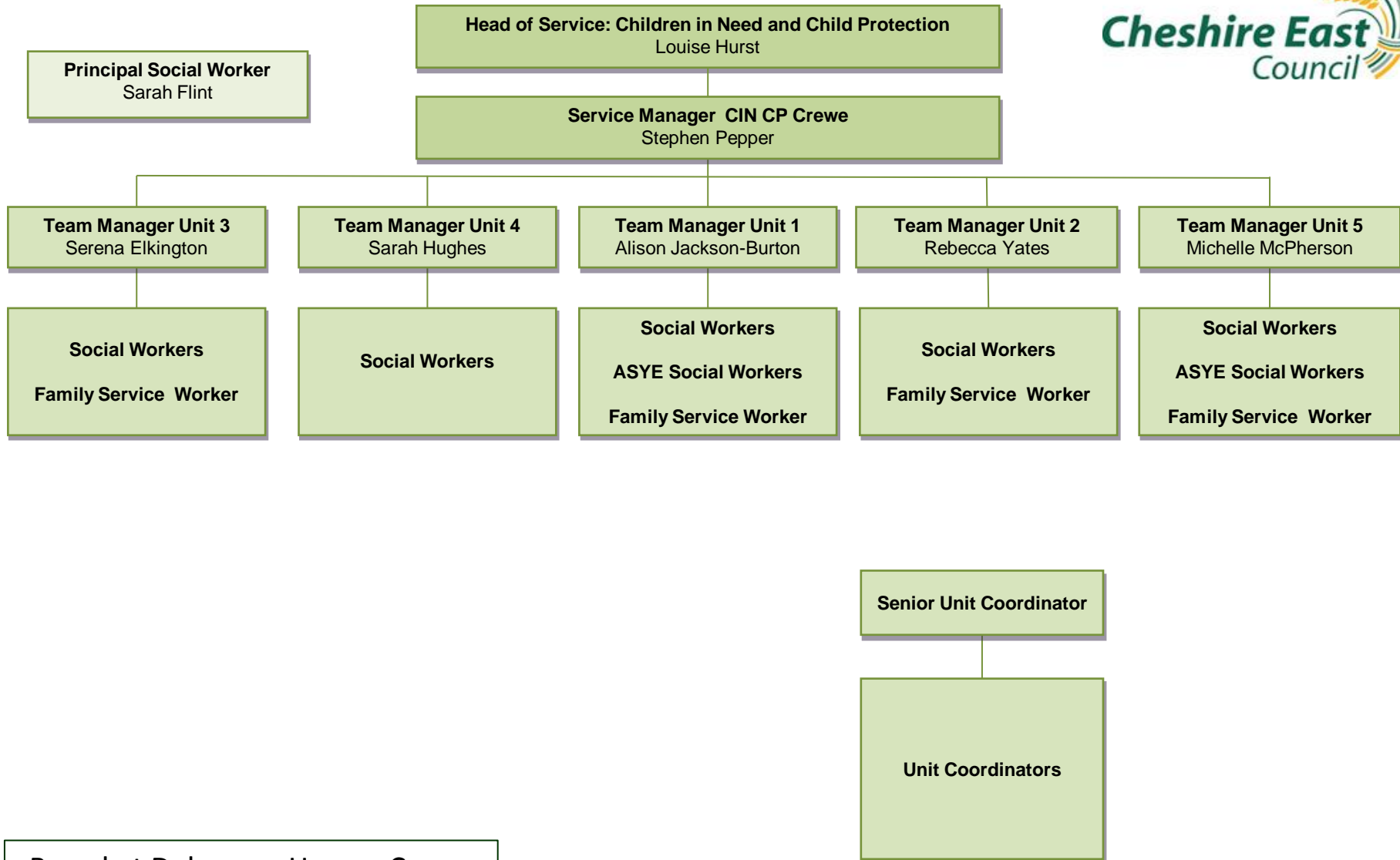
Based at Delamere House, Crewe

Early Help Brokerage



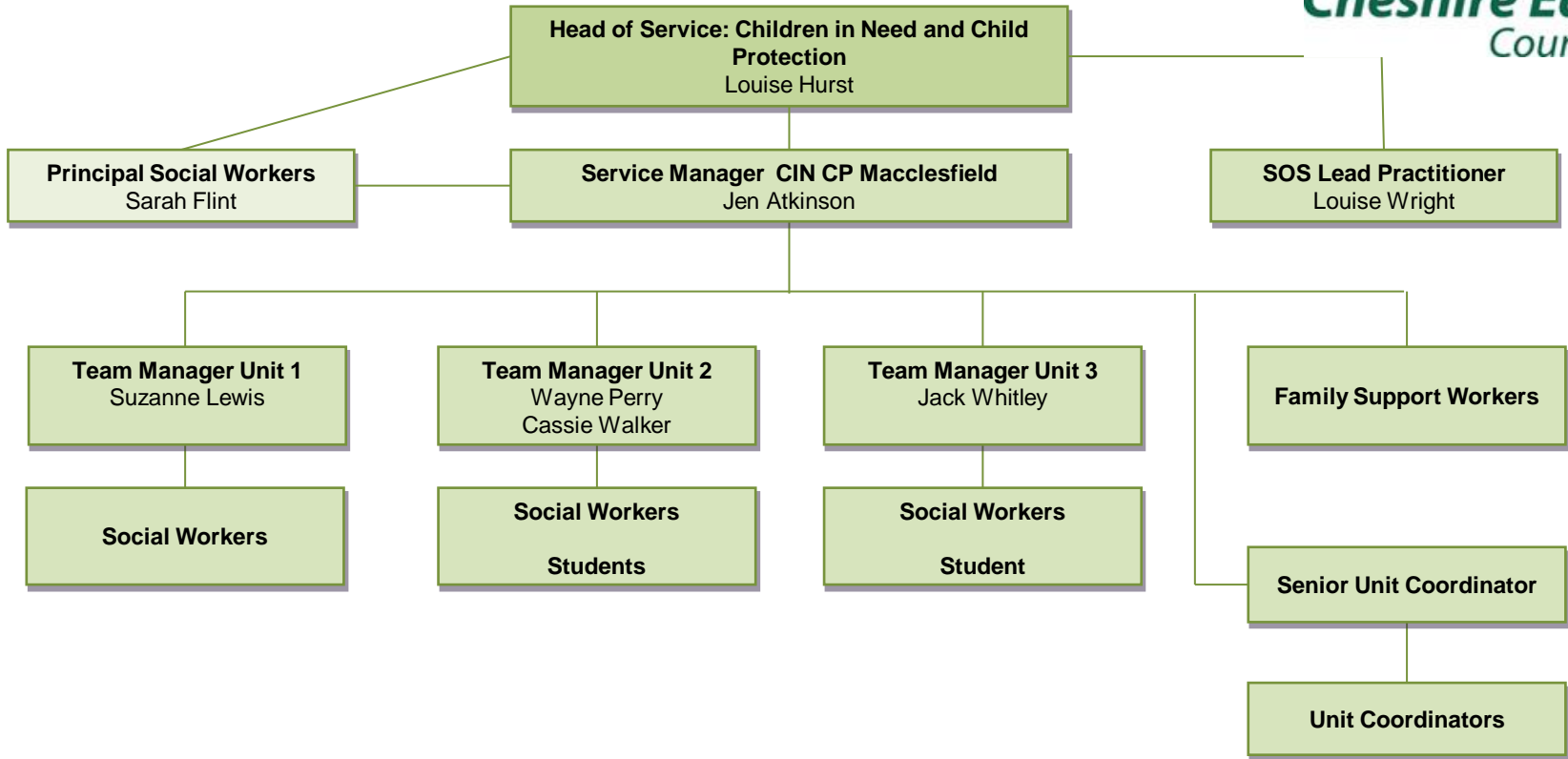
Based at Delamere House, Crewe

Child in Need and Child Protection Team (CIN/CP) - Crewe



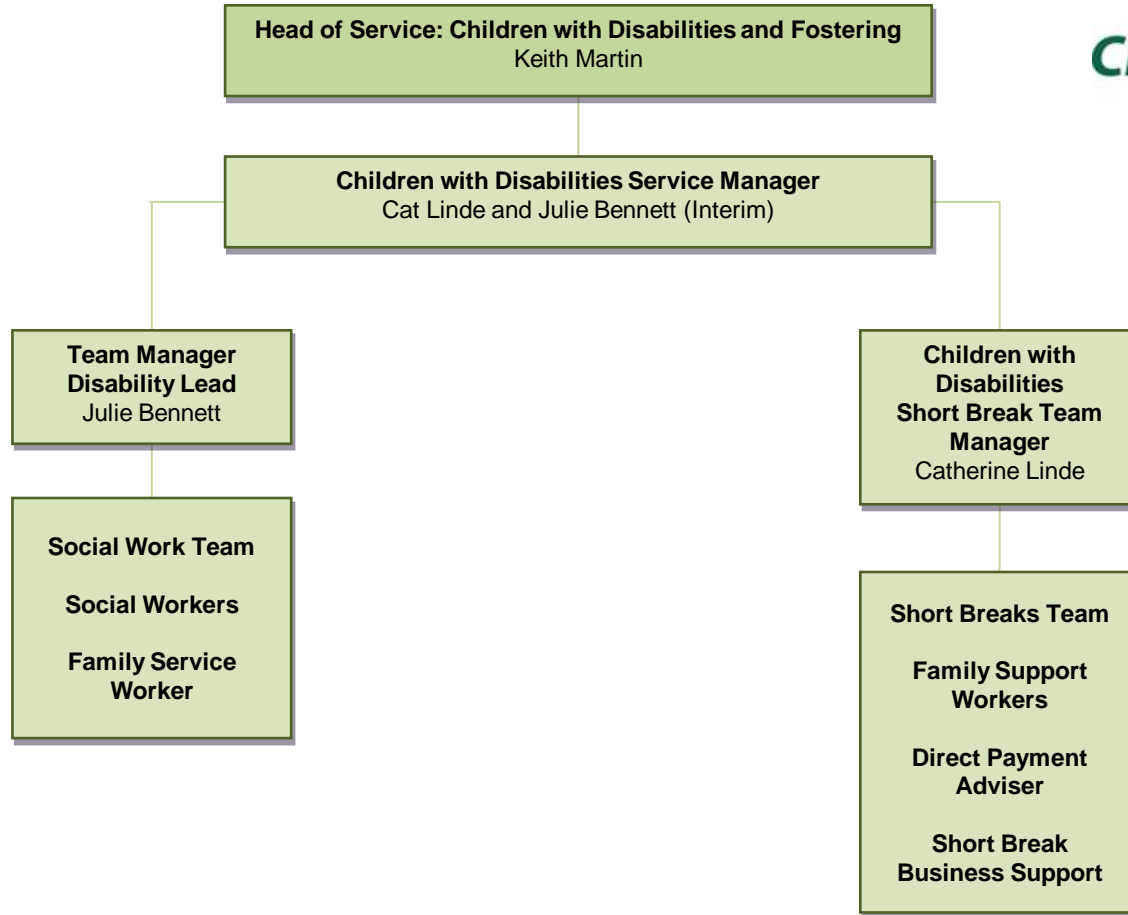
Based at Delamere House, Crewe

Child in Need and Child Protection Team (CIN/CP) - Macclesfield



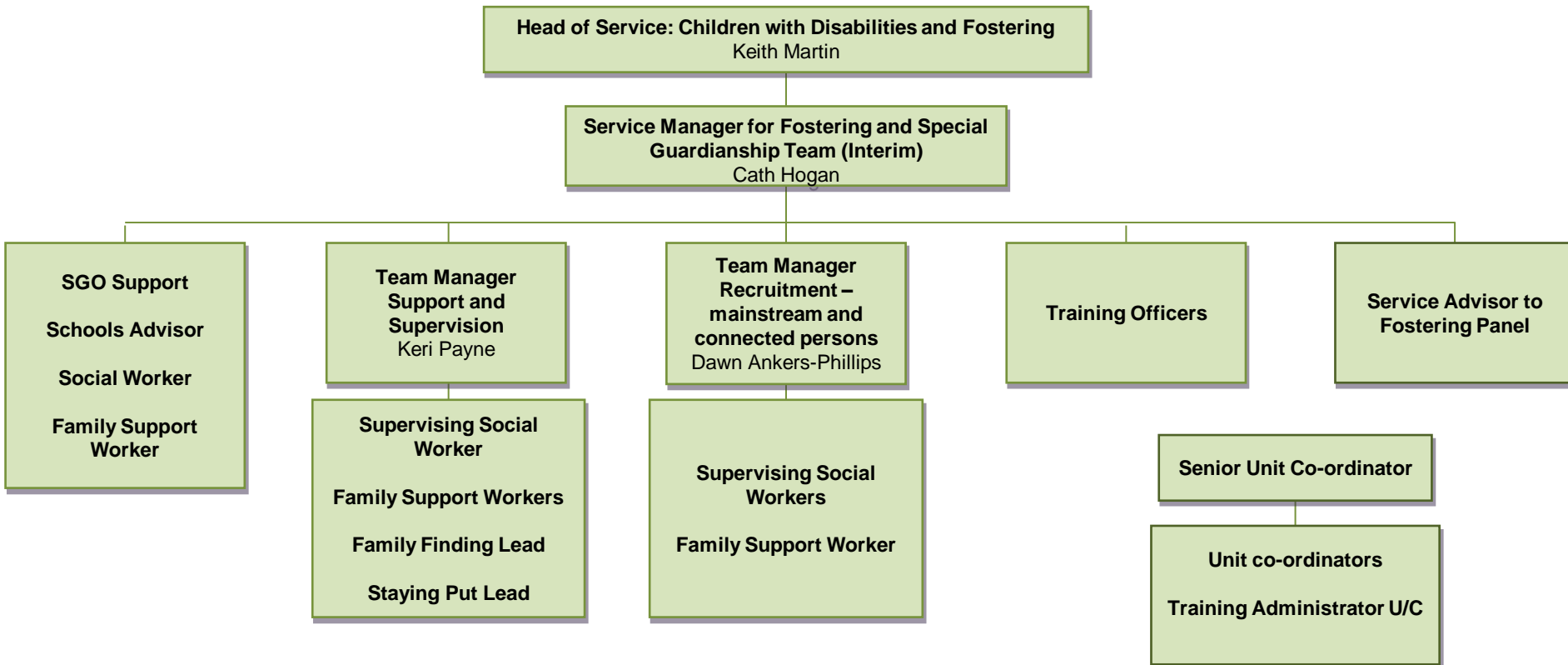
Based at Macclesfield Town Hall

Children with Disabilities Service



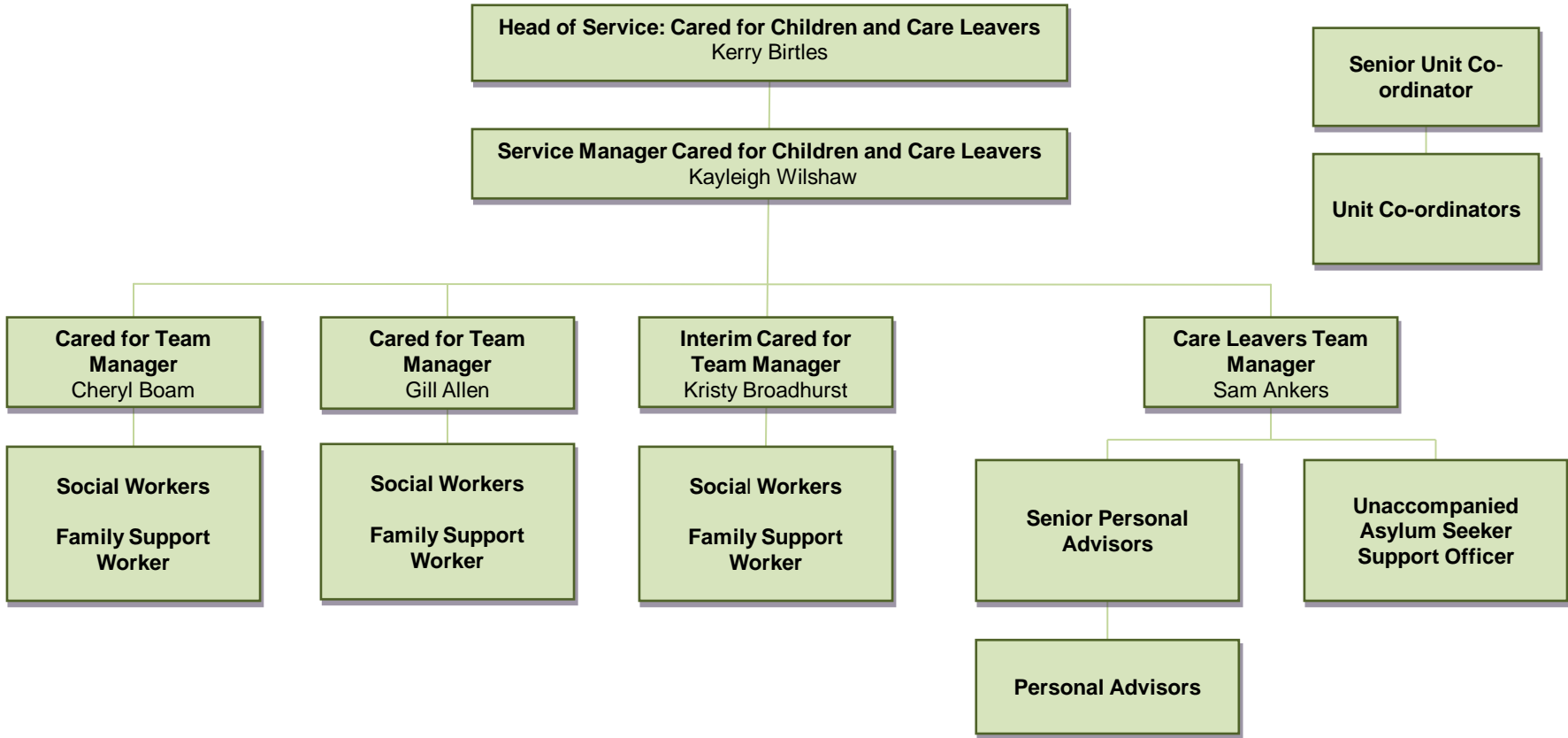
Based at Cledford House,
Middlewich and
Macclesfield Town Hall

Fostering and Special Guardianship Team



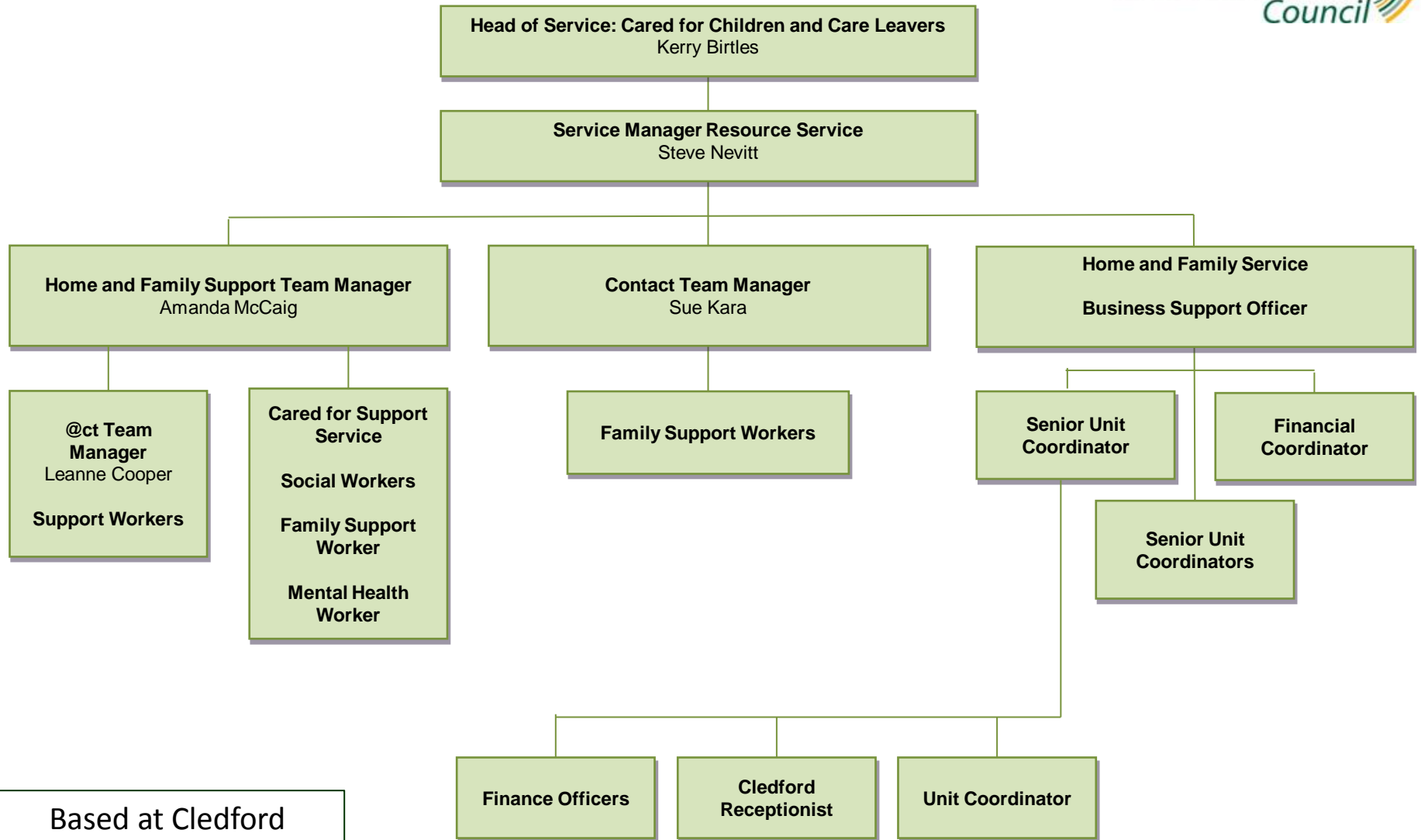
Based at Cledford House,
Middlewich

Cared for Children and Care Leavers Service



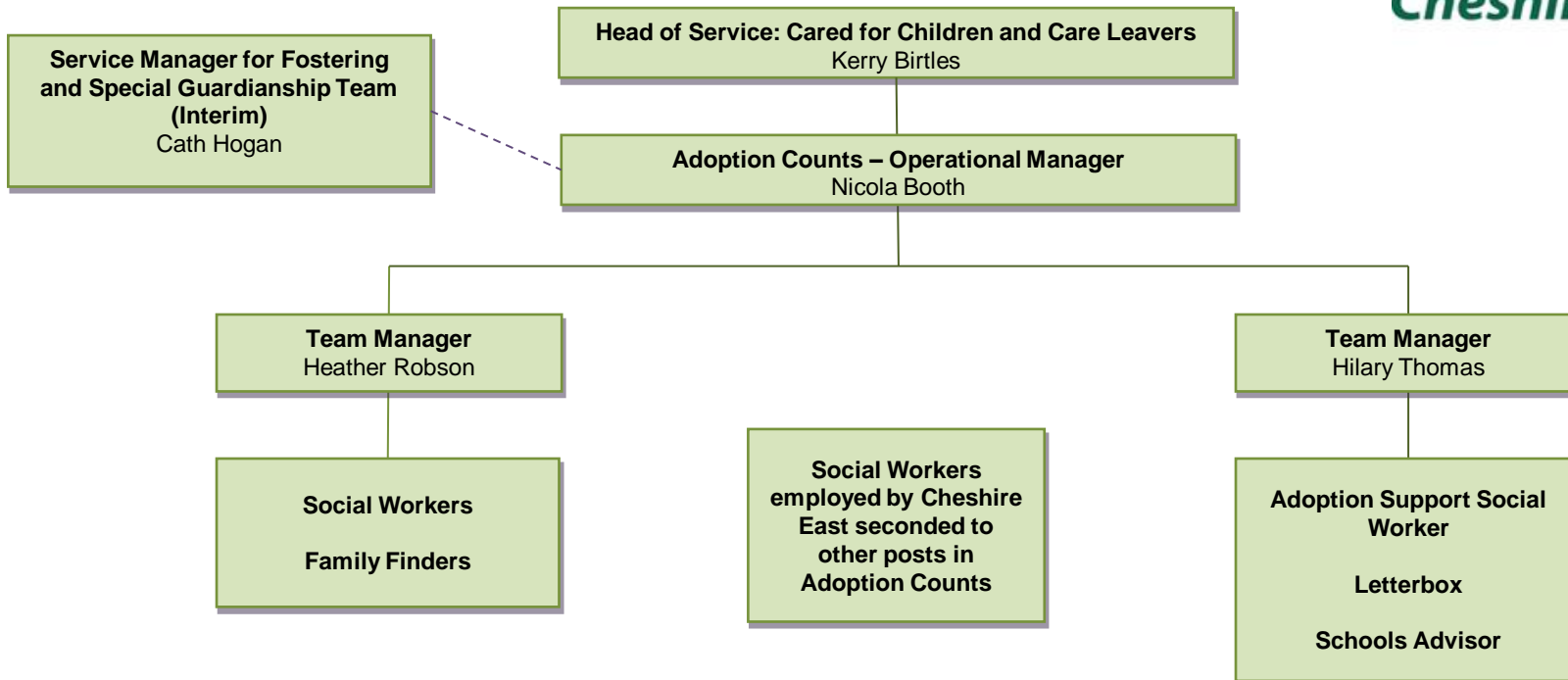
Based at Cledford House,
Middlewich

Resource Team



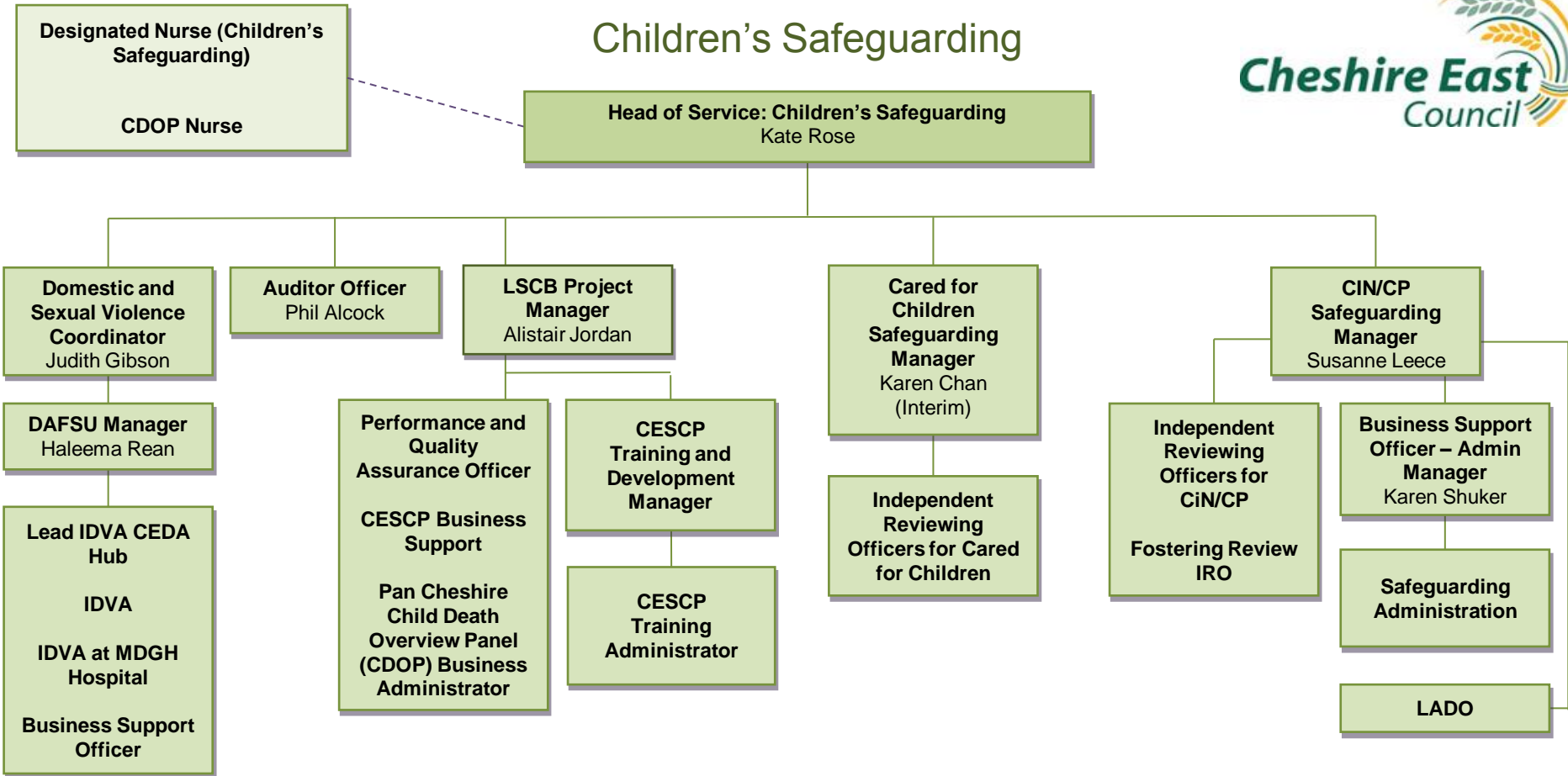
Based at Cledford House, Middlewich

Adoption Counts (Regional Adoption Agency)



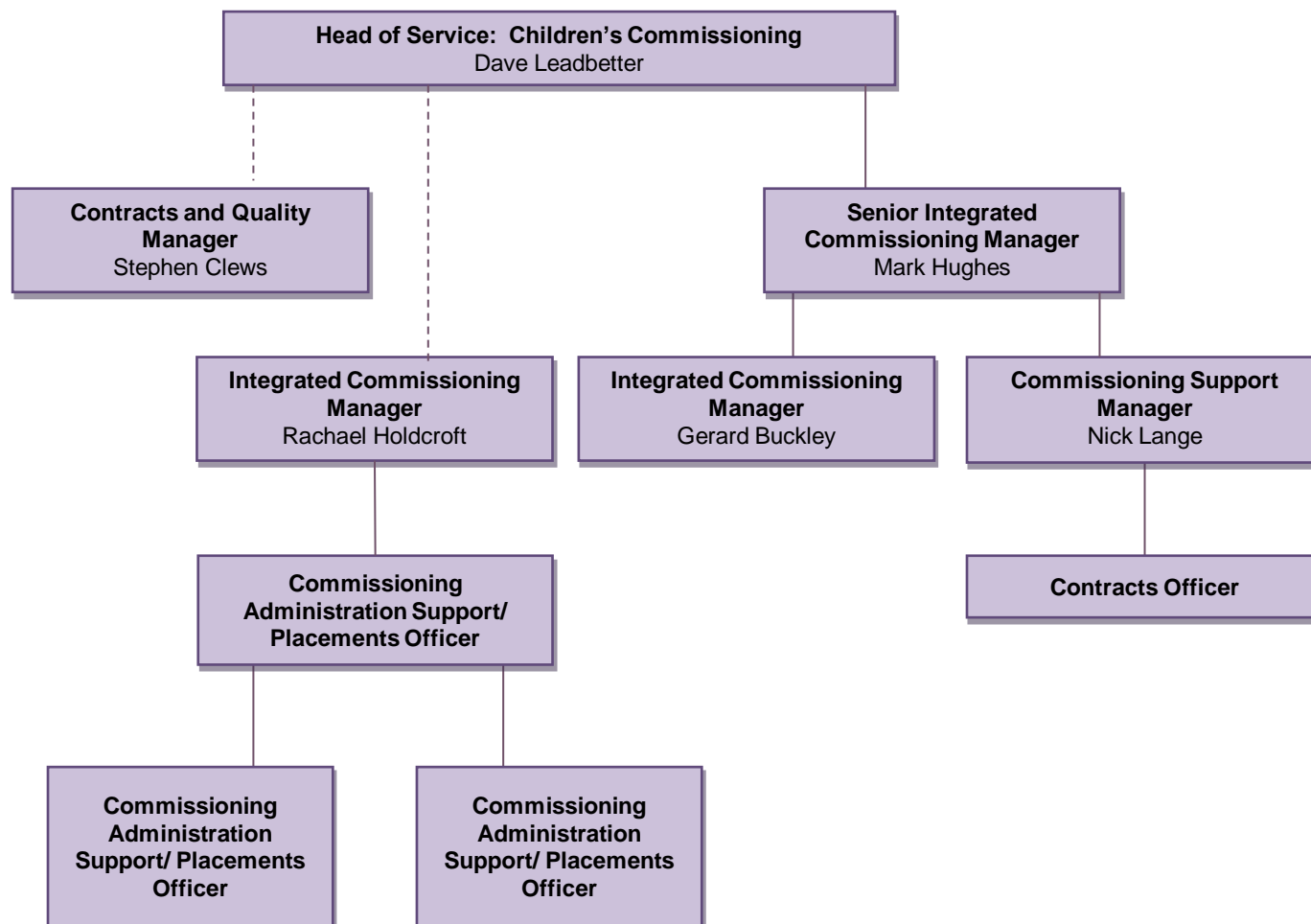
Staff bases in Middlewich,
Wythenshawe and Salford

Children's Safeguarding



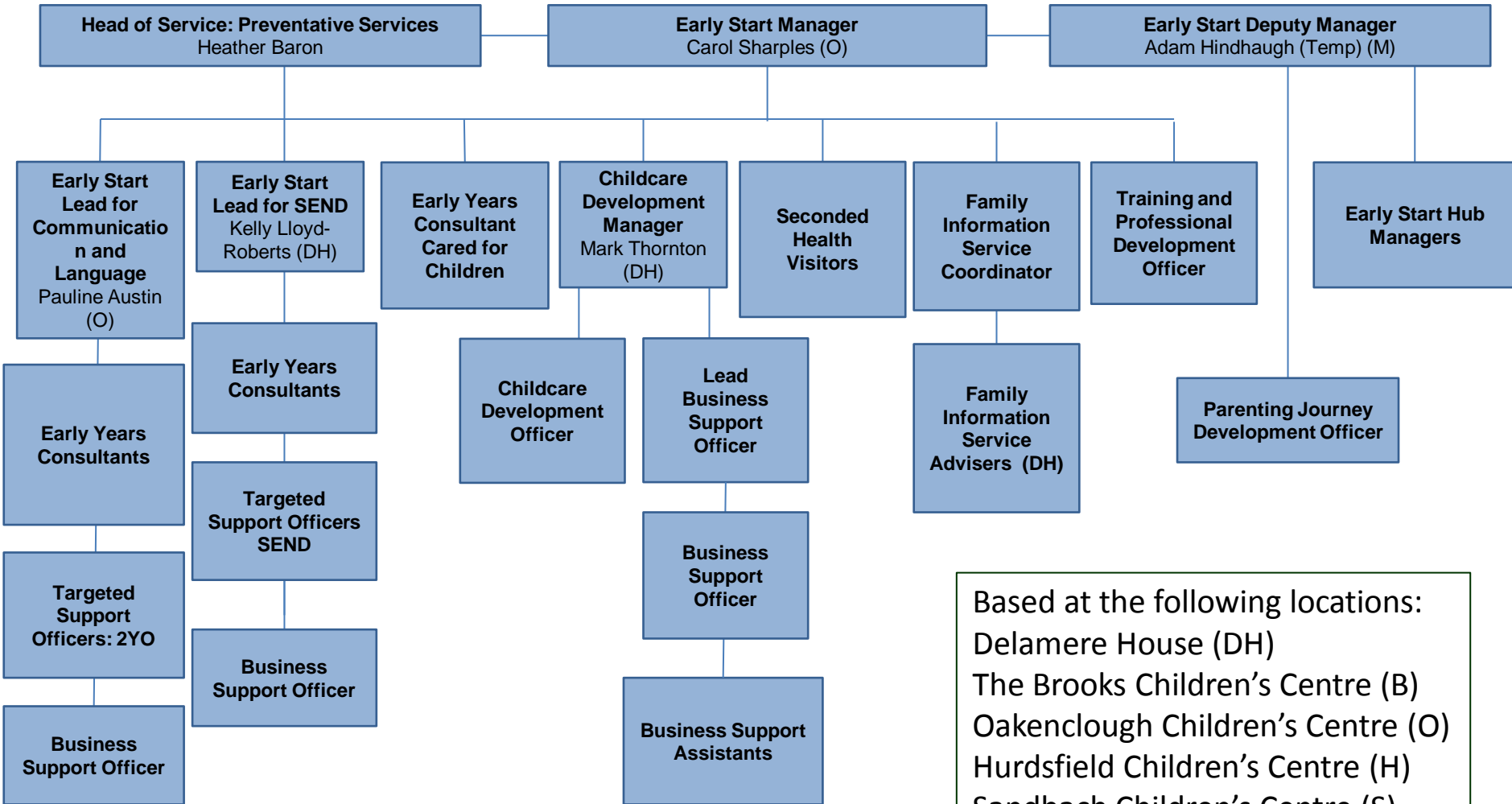
Based at Macclesfield Town Hall,
Westfields, and Congleton Police
Station

Children's Commissioning Team



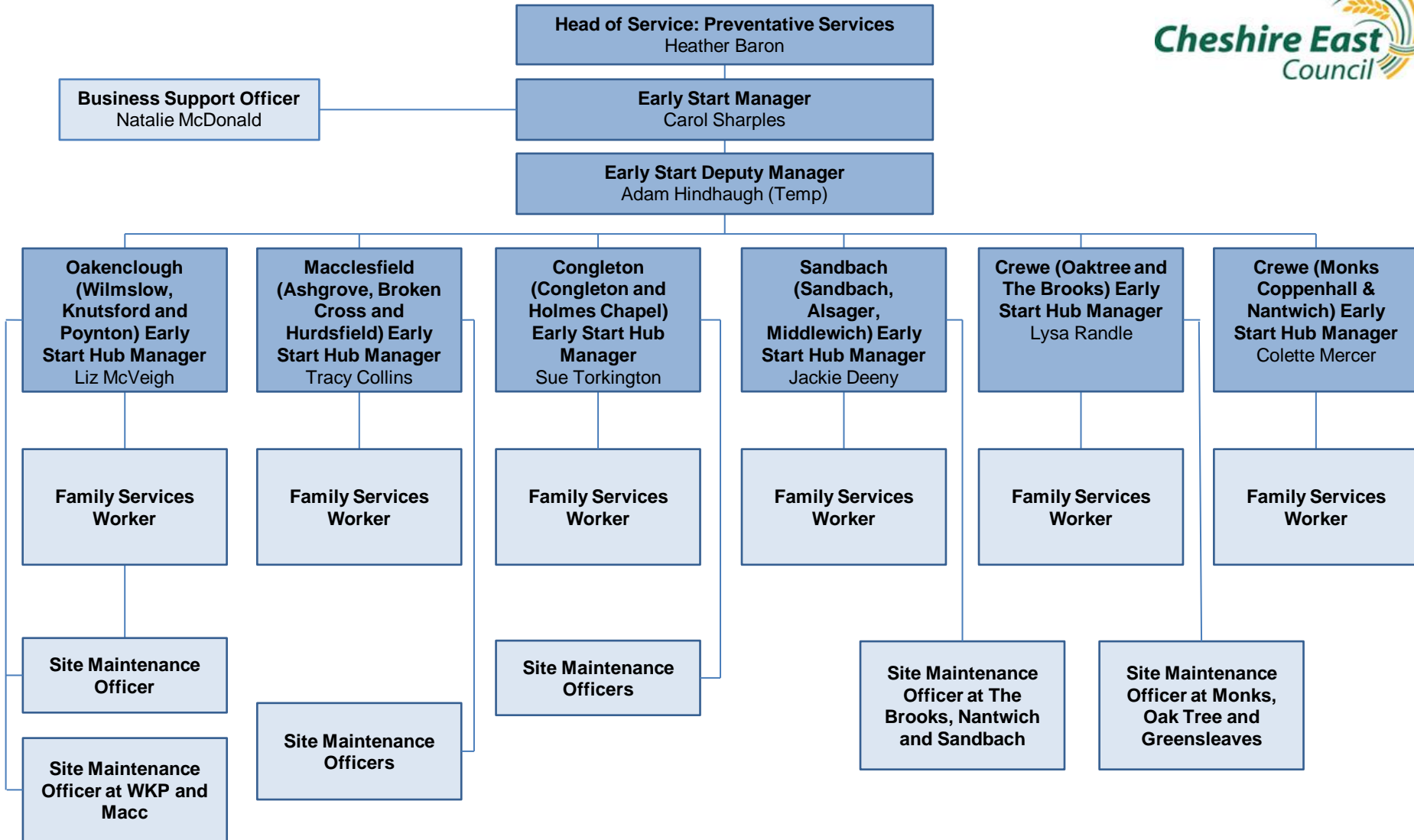
Based at Cledford House,
Middlewich

Early Start Team

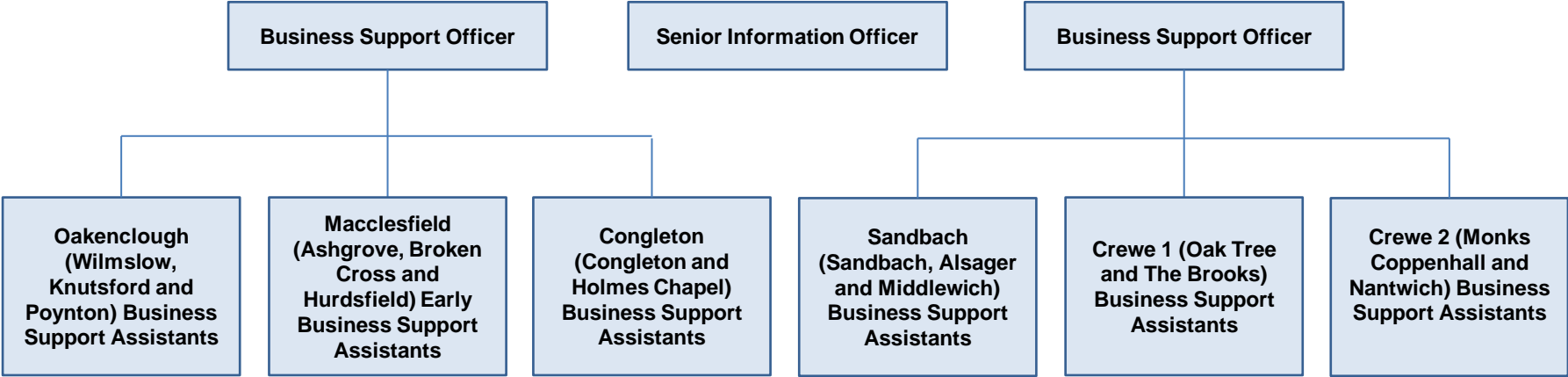


Based at the following locations:
 Delamere House (DH)
 The Brooks Children's Centre (B)
 Oakenclough Children's Centre (O)
 Hurdsfield Children's Centre (H)
 Sandbach Children's Centre (S)
 Congleton Children's Centre (C)
 Oak Tree Children's Centre (OT)
 Monks Children's Centre (M)
 Ash Grove Children's Centre (AG)

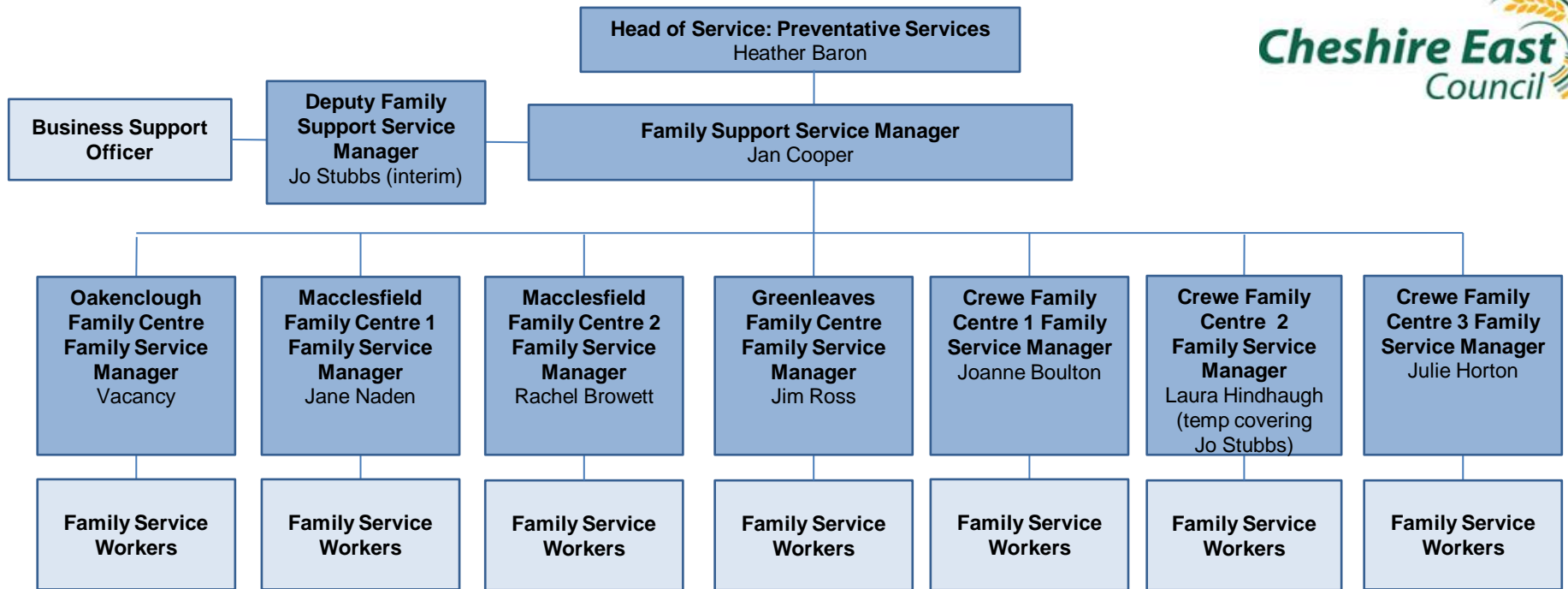
Early Start Team



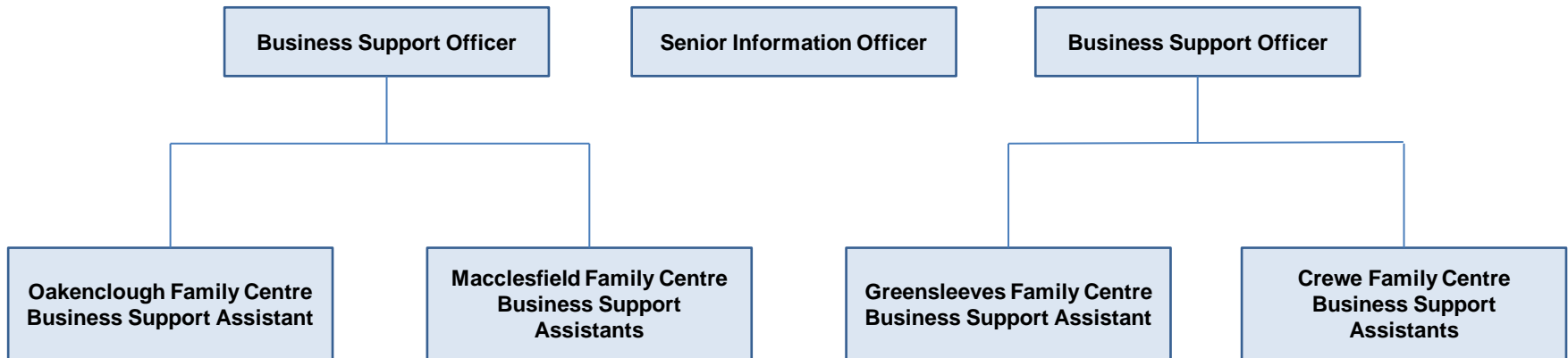
Early Start Hub Business Support Team



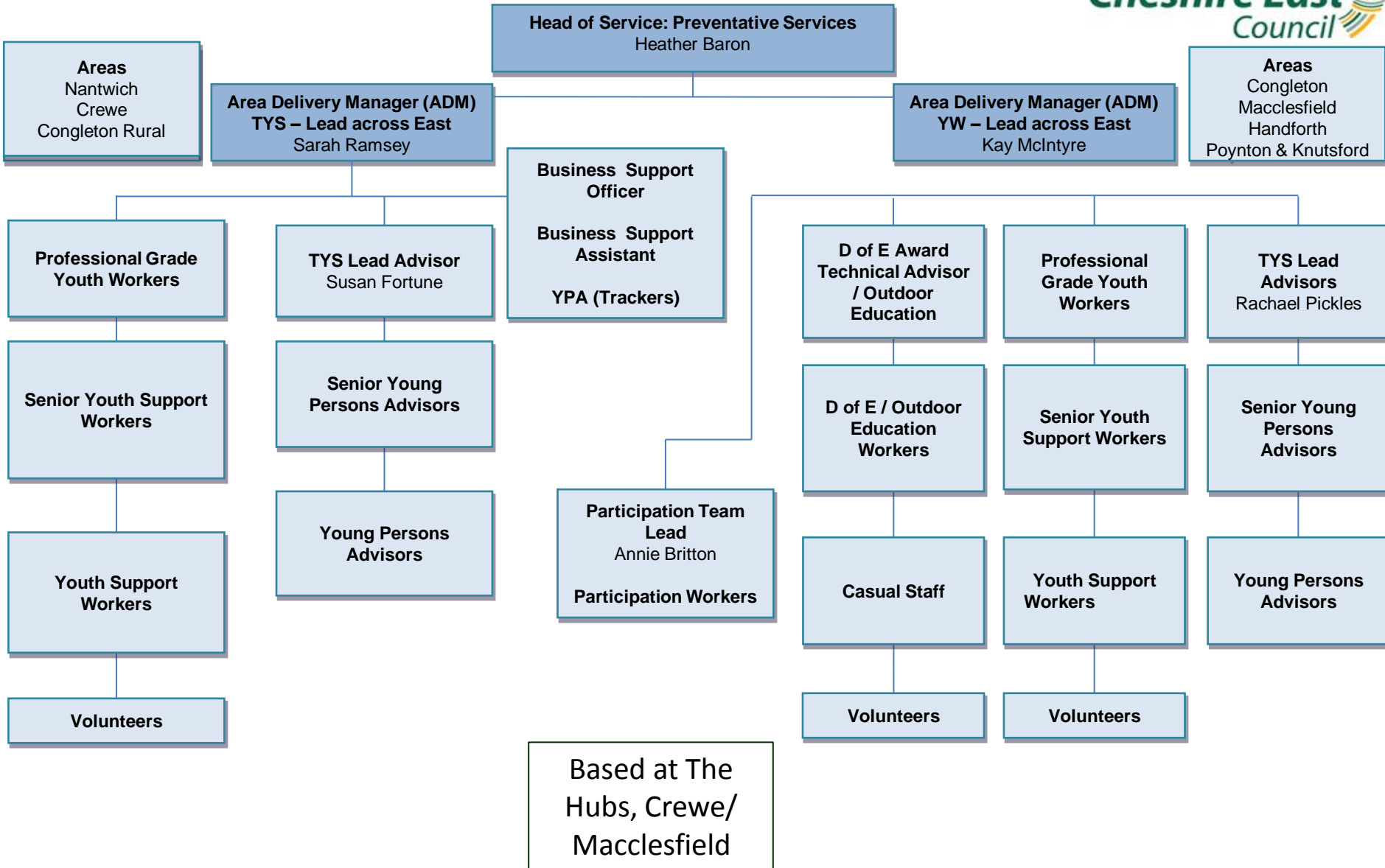
Cheshire East Family Service



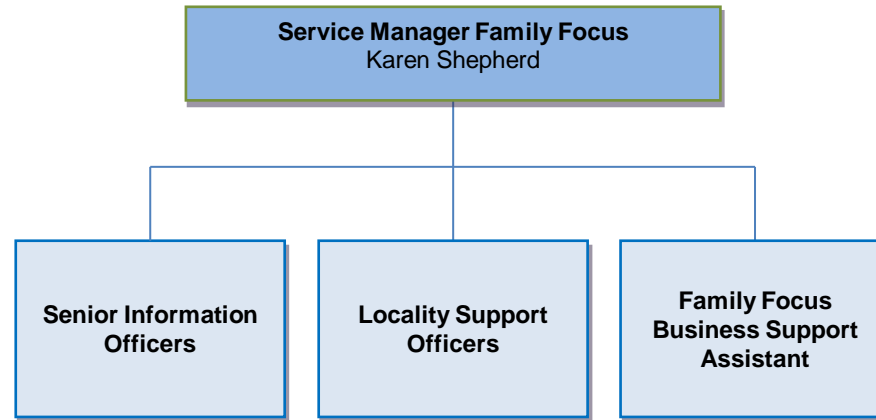
Cheshire East Family Service Business Support Team



Cheshire East Youth Support

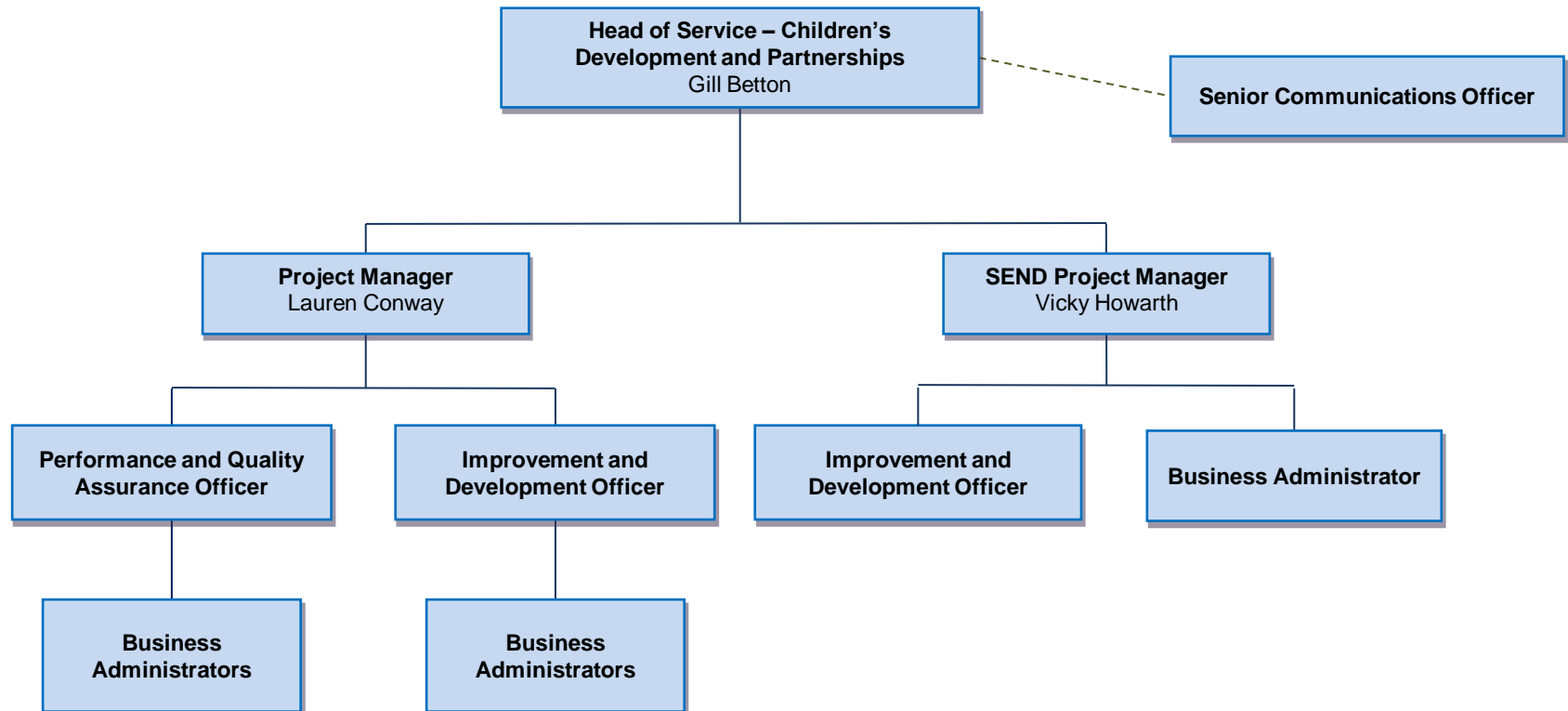


Family Focus



Based at Westfields, Sandbach

Children's Service Development and Partnerships



Based at Westfields, Sandbach