

# Chilewich Debuts Spring/Summer 2019 Collection

Introducing dynamic new designs, bold textures, and distinctive colors to enhance tables and floors.

## FOR IMMEDIATE RELEASE

(New York, NY – November 2018) Chilewich's Spring/Summer 2019 collection is one of the most dynamic and versatile ever created by the design-led, family-owned company. Innovative new placemats, table runners, coasters, and floor mats offer novel ways to incorporate the beauty and functionality of Chilewich textiles into any space, indoors or outdoors.



MIDNIGHT, Beam



PANSY, Heddle

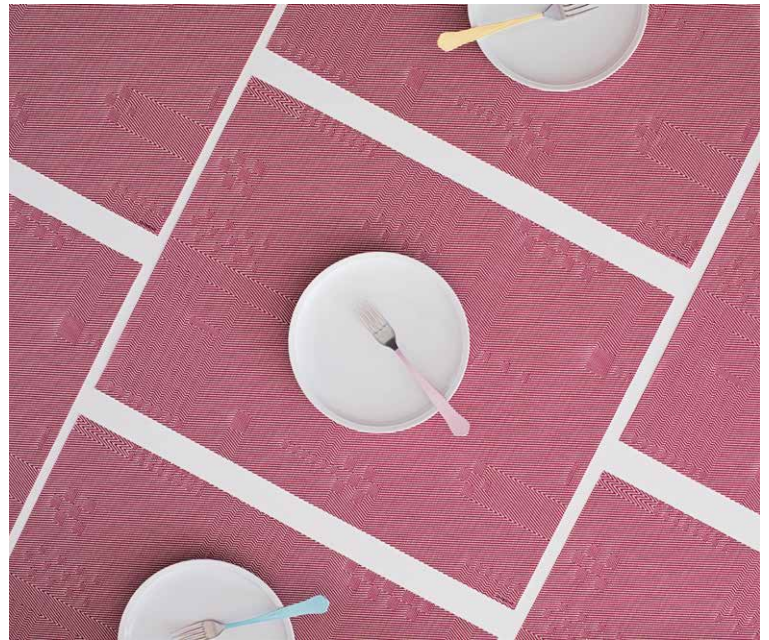
The lively forms and color combinations of five new tabletop designs — Beam, Heddle, Pop, Pixel, and Pinwheel — span a range of styles and scales. Distinctive new colorways for Basketweave, Mini Basketweave, Glow, Dahlia, Petal, Market Fringe, and Skinny Stripe add depth to some of Chilewich's most popular existing designs. For the floor, Heddle and Scout debut as woven mats, and Simple Stripe joins the range of tufted indoor/outdoor Shag Plus mats.

Among the boldest debuts for Spring/Summer 2019 is Beam, in which broad bands of color intersect with narrow accent stripes in an exploded plaid. Subtle tonal variations in the custom-made yarns ensure that Beam takes on a distinct character in each of three striking colorways: Azalea, Midnight, and Shadow.

Another especially dynamic new weave is Heddle, named for an integral element of the loom on which it was developed. Inspired by Bauhaus textiles and debuting 100 years after the legendary design school was founded, these placemats and unbacked floor mats juxtapose areas of more graphic, floating yarns with flat-woven fields of subtle stripes. Available in Pansy, Parade, and Shadow, Heddle is also the heaviest fabric Chilewich has ever created for the table.



PARADE, Pop



RASPBERRY, Pixel

A playful interpretation of Chilewich's signature Basketweave, **Pop** is at once lively and elegant. Individual strands of bold color flicker in and out of a neutral-hued ground, leaving textured traces of a syncopated grid. With its vibrant crossings of vertical and horizontal lines, these placemats bring energy and depth to the table in two colorways: Fireworks and Parade.

Influenced by the pioneering textiles of artist and designer Anni Albers, **Pixel** is a celebration of contrasts: past and future, simplicity and complexity, reality and illusion. This graphic weave creates the impression of movement by punctuating orderly diagonals with playful diversions in direction and scale. The high-contrast colorways — Midnight and Raspberry — make these new placemats even more mesmerizing.

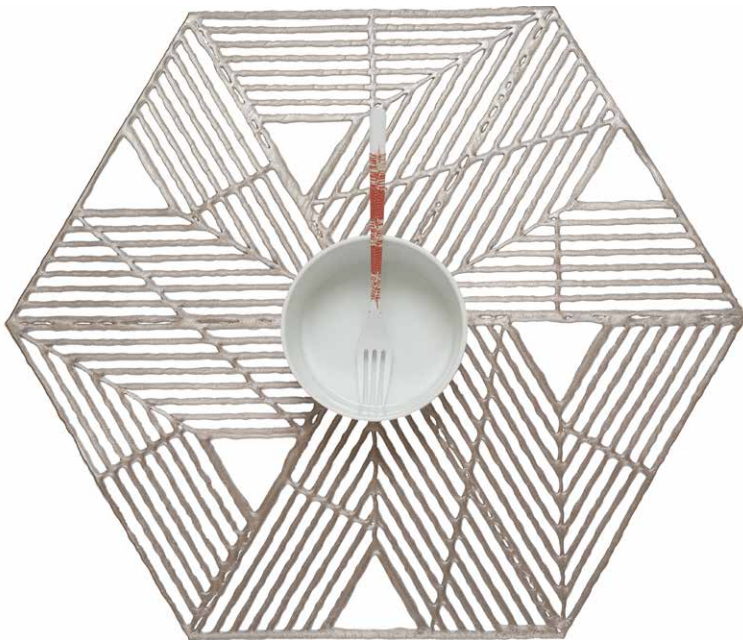


SHADOW, Basketweave



CANTALOUPE, Mini Basketweave

The Spring/Summer 2019 collection also expands the palettes for a broad range of existing designs. New to the **Basketweave** range for tabletop and floor is **Shadow**—a deep, cool grey. **Mini Basketweave** gains dimension with vibrant yet versatile **Cantaloupe** and **Daffodil** (for tabletop) and **Sky** (for tabletop and floor), and these three new hues are joined by **Matcha**, a pale green, in a new set of felt-backed hexagonal coasters.



GUNMETAL, Pinwheel



BLUSH, CANTALOUPE, MATCHA, SKY, Mini Basketweave, Hex

A striking addition to the best-selling range of “pressed” designs—non-woven textiles created using special molds—is Pinwheel. Inspired by patterns found in the natural world, these delicate-looking yet durable placemats combine geometric forms with gently blurred lines to create a design that is both intricate and organic. Pinwheel placemats are available in Black and Gunmetal.



CHAMPAGNE, Dahlia



GUNMETAL, Petal

Additionally, two of the most popular pressed placemats are now available in best-selling colorways: Dahlia debuts in Champagne, a luminous pale gold, while Petal arrives in Gunmetal, a dusky silver. These modern metallics highlight the organic cutwork that has made Dahlia and Petal enduring customer favorites.



SISAL, Market Fringe

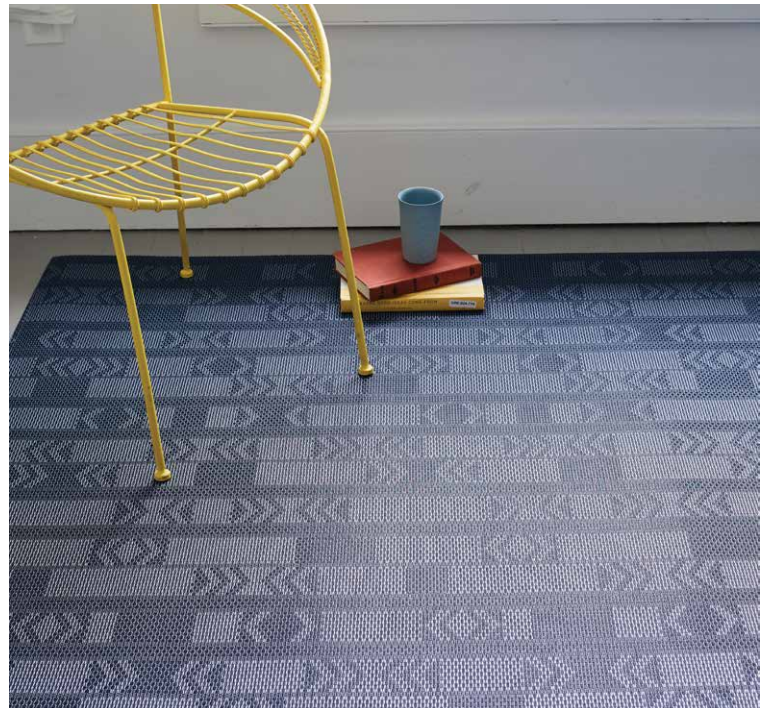


SHADOW, Market Fringe

Distinguished by a pleasingly chunky texture and hand-fringed edges, **Market Fringe** gains depth for the floor with earthy neutral hues of Sisal and Shadow.

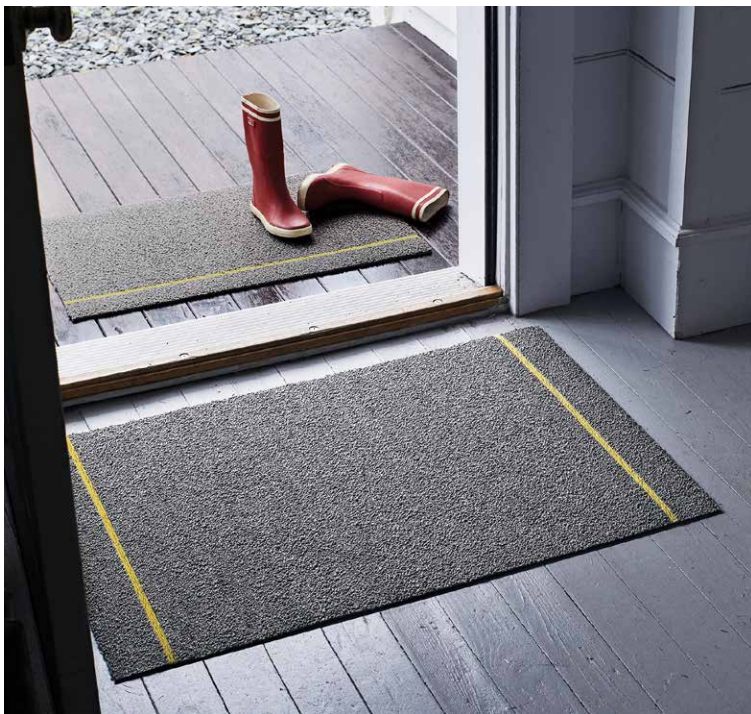


PANSY, Heddle



MIDNIGHT, Scout

Joining the range of woven floor mats are **Heddle** and **Scout**. The banded geometric designs and shifting forms of Scout take inspiration from patterned mats made by the BaKongo people in the 19th and 20th centuries, in what is now the Democratic Republic of the Congo. Re-imagined in a new materiality and palette (Midnight and Graphite), this weave brings a contemporary spirit to ancient motifs.



GREY CITRON, Simple Stripe Shag Plus



NAVY CORAL, Simple Stripe Shag Plus

New to the range of tufted floor mats is **Simple Stripe Shag Plus**. The bright stripes that illuminate this indoor/outdoor mat are more than a visual accent. Made of coarse PVC yarns and positioned deliberately at the mat's edge, they can scrape away debris from shoes and boots. The vibrant stripes are surrounded by a soft yet durable expanse of olefin, making this mat exceptionally quick-drying and ready to withstand years of use, indoors or out. It debuts in Grey with Citron Stripe and Navy with Coral Stripe.

All products in the Spring/Summer 2019 collection are made in the USA of Chilewich's durable TerraStrand yarns, except for the pressed designs—Pinwheel, Dahlia, and Petal—which are designed in New York and made in Taiwan.

For high-resolution images, product samples, swatches, or additional information, please contact:

Chilewich Press Office  
press@chilewich.com  
(646) 545-2471

#### ABOUT CHILEWICH

Chilewich brings depth to surfaces. New York designer Sandy Chilewich introduced her woven textiles to the international design community in 2000. Today the family-owned company's unique coverings for tables, floors, and walls continue to push the boundaries of form and function. Designed and made almost entirely in the United States, the ever-evolving collection combines innovative weaves and a distinctive color palette with extraordinary durability and easy maintenance. Learn more at [chilewich.com](http://chilewich.com)

#### ABOUT TERRASTRAND®

Chilewich is committed to continuous improvement, both in product and in process. Among the company's most significant environmental advancements is discontinuing the use of petroleum-based plasticizers that are typically used to soften PVC yarns and replacing them with phthalate-free, renewable vegetable compounds. TerraStrand® is the proprietary name of these innovative yarns.