

CHINESE SNUFF BOTTLES FROM PRIVATE AMERICAN COLLECTIONS

Tuesday June 27, 2017

San Francisco



Bonhams



CHINESE SNUFF BOTTLES FROM PRIVATE AMERICAN COLLECTIONS

Tuesday June 27, 2017, 10am
San Francisco

BONHAMS

220 San Bruno Avenue
San Francisco CA 94103

PREVIEW

San Francisco

Saturday June 24, 10am to 5pm
Sunday June 25, 10am to 5pm
Monday June 26, 10am to 5pm

SALE NUMBER: 24434

Lots 2001 - 2171

CATALOG: \$35

BIDS

+1 (800) 223 2854
+1 (415) 861 8951 fax

To bid via the internet please visit
www.bonhams.com/24434

Please note that telephone bids must be submitted no later than 4pm on the day prior to the auction. New bidders must also provide proof of identity and address when submitting bids.

Please contact client services with any bidding inquiries.

Please contact client services with any bidding inquiries.

Please see pages 79 to 84 for bidder information including conditions of sale, after-sale collection and shipment.

INQUIRIES

Dessa Goddard, Director
+1 (415) 503 3333
dessa.goddard@bonhams.com

Angela Lee, Business Manager
+1 (415) 503 3358
angela.lee@bonhams.com

Ling Shang, Consultant
Asian Works of Art
+1 (415) 503 3208
lingling.shang@bonhams.com

Henry Kleinhenz, Specialist
+1 (415) 503 3336
henry.kleinhenz@bonhams.com

Dan Herskee, Specialist
+1 (415) 503 3271
daniel.herskee@bonhams.com

Amelia Chau, Consultant
Chinese Paintings
+1 (415) 503 3397
amelia.chau@bonhams.com

Bruce Maclaren
Senior Specialist
+1 (917) 206 1677
bruce.maclaren@bonhams.com

ILLUSTRATIONS

Front Cover
Lots 2026, 2042, 2054, 2069,
2101 and 2118

Inside Front Cover
Lot 2027

Inside Back Cover
Lot 2027

Back Cover
Lot 2053

INTERNATIONAL CHINESE CERAMICS AND WORKS OF ART TEAM



Colin Sheaf



Dessa Goddard



Asaph Hyman

USA



Bruce MacLaren
Chinese Paintings
and Works of Art
New York



Nicholas Rice
Chinese Art
New York



Ming Hua
Chinese Art
New York



Harold Yeo
Chinese Art
New York



Henry Kleinhenz
Chinese Art
San Francisco



Daniel Hersksee
Chinese Art
San Francisco



Ling Shang
Chinese Art
San Francisco



Amelia Chau
Chinese Paintings
San Francisco

ASIA AND AUSTRALIA



Xibo Wang
Hong Kong



Gigi Yu
Hong Kong



John Chong
Hong Kong



Edward Wilkinson*
Hong Kong



Yvett Klein
Sydney

EUROPE



Benedetta Mottino
London,
New Bond Street



Sing Yan Choy
London,
New Bond Street



Edward Luper
London,
New Bond Street



Rachel Hyman
London,
Knightsbridge



Rosangela Assennato
London,
Knightsbridge



Ben Law Smith
London,
Knightsbridge



Ian Glennie
Edinburgh



Asha Edwards
Edinburgh

ASIA REPRESENTATIVES



Summer Fang
Taipei



Bernadette Rankine
Singapore

* Indian, Himalayan & Southeast Asian Art

**CHINESE SNUFF BOTTLES FROM
THE COLLECTION OF SYLVIA H. GOTTLIEB
GREAT NECK, NEW YORK**

Lots 2001 - 2070



SYLVIA H. GOTTLIEB

(1920 – 2008)



Sylvia Hoffman, my mother, was born in the Bronx, New York City. She was first generation American and the first woman in her family to go to college. Graduating from Hunter College in 1940 with a degree in Biology, mother began her career as a lab technician and advanced to become supervisor of a laboratory in New York City until she had children.

Sylvia married at the age of 24 to my father, Leonard H. Gottlieb, a Sergeant in the United States Army stationed at Camp Edwards, on Cape Cod, Massachusetts.

She enjoyed painting and worked in oils, watercolors and pastels. Her interest in art gradually became a lifelong passion. For years we lived in Stuyvesant Town in Manhattan, an easy subway ride to the Museum of Natural History, the Metropolitan Museum of Art, the Whitney, the art galleries in the East Village and Guggenheim Museum. There were times when I would have preferred to visit Yankee Stadium, but that wasn't on the agenda.

Sylvia eventually stopped painting and started collecting. Her collection became the SHG Gallery in the family's basement and offered graphics - etchings, lithographs, and an occasional poster. Mother would not only sell the pieces, but visited client's homes to offer advice on framing and interior decoration.

My parents made their first trip to Europe in 1963. From then on they visited almost every European country, as well as Central and South America and the Far East. My mother's travels to East Asia undoubtedly played a role in her interest in Asian art. My parents were active members of the International Chinese Snuff Bottle Society. They attended conventions held in the United States and overseas. My mother also attended every available lecture to broaden her knowledge on snuff bottles.

After my father's death in 1987, my mother stopped traveling. She stopped collecting after the death of my younger sister in 2003.

Sylvia kept almost every single piece of paper and receipt for every snuff bottle she purchased. In her letter to me about dealing with her snuff bottle collection upon her death, she wrote: "[The bottles] are more than a mere "collection" They represent the entree into antiquity, understanding Chinese history, the arts, mineralogy, folk lore, symbolism, religion, language, calligraphy and more to enrich your life -- if that is your desire".

It is my mother's wish that her snuff bottles find a home with collectors who appreciate them and derive much pleasure from the bottles that once she loved.

Ellen Gottlieb Lerman
2017

SYLVIA H. GOTTLIEB

(1920 – 2008)

我的母親 Sylvia H. Goffman 出生於紐約。她是我們家族在美國本土出生的第一代人，也是家中首位進入大學就讀並獲得學位的女性。1940年，母親從亨特學院 (Hunter College) 畢業取得生物學學位之後，起先在紐約的一家實驗室擔任技術員，之後被提升為管理人員。在她24歲那年，母親和我的父親 Leonard H. Gottlieb 結婚。父親曾在美國的部隊中擔任中士，服役於麻省 Cape Cod 的 Camp Edwards。在我們出生之後，母親便辭去了實驗室的工作。

母親一直非常喜歡繪畫，她曾自己創作油畫、水彩、粉彩畫。她對藝術的初期興趣逐漸發展成為對藝術的一生鍾愛。我們曾住在曼哈頓 Stuyvesant Town，從那裡去大都會博物館、惠特尼美術館、古根海目博物館、自然歷史博物館以及東區的畫廊乘地鐵都很方便。曾有時，我更傾向去紐約棒球體育館，但往往那並非在我母親的日程安排中。

後來母親逐漸停止了繪畫創作，她的注意力開始轉向收藏藝術品。她在家中以其自己的藏品為基礎開設了 SHG 畫廊，主要展出和銷售平面藝術作品，如蝕刻、版畫，偶爾也會有海報。母親不僅只將作品售給客人，她還會到客人家，根據客人的房間提供一些裝飾建議，例如如何給作品挑選最合適的畫框、如何在室內擺設等。

1963年，母親和父親第一次去歐洲旅行。從那以後，他們的足跡幾乎遍及了歐洲每一個國家。除此之外，他們還遊歷了中美、南美、以及遠東諸多地區。母親在東亞的旅行經歷無疑開啟了她對亞洲藝術的濃厚興趣。我的父母都曾是國際中國鼻煙壺協會的活躍會員，他們曾多次參加協會在美國和海外舉辦的活動。母親更不失參加每次相關講座的机会，以擴展她對鼻煙壺知識的了解。1987年我父親過世之後，母親便停止了外出旅行。母親停止收藏則是在2003年我的妹妹過世之後。

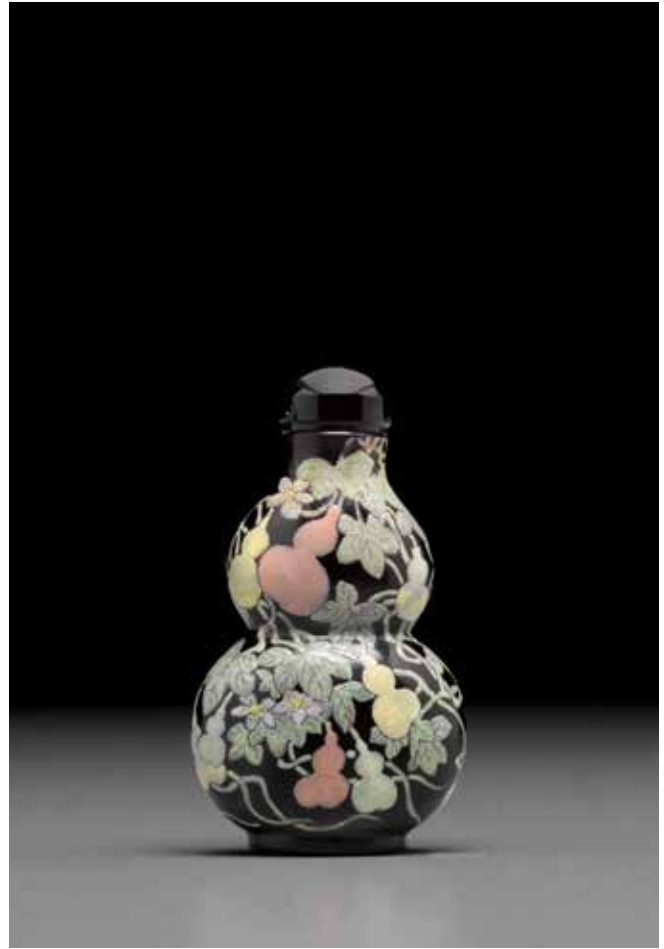
母親幾乎留存了她所購置的鼻煙壺的所有收據和相關資料。對於在她離世後如何處置她精心收藏的鼻煙壺，母親在她晚年留給我的信中特別寫道：「這些鼻煙壺不僅是一組藏品……如若一個人有所願望，它們可以引領你進入古物領域，了解中國的歷史、藝術、民俗故事、書法語言、宗教、圖像學、甚至自然礦物學等等，這些知識可以豐富你的生活。」

母親的希望是這些她曾鍾愛的鼻煙壺能各自找到新歸宿，繼續為藏家帶來無限的欣賞樂趣。

Ellen Gottlieb Lerman
2017



2001



2002

Lots 2001 to 2070 are to be sold without reserve
拍品2001至2070號為無底價拍品

2001

A SAPPHIRE BLUE OVERLAID WHITE GLASS DOUBLE-GOURD SNUFF BOTTLE

1750-1850

2 13/16in (7.3cm) high

\$2,000 - 3,000

Provenance

Kenneth Brown Inc., acquired 14th March 1980, La Jolla, California

listed in an appraisal report compiled by Robert W.L. Kleiner,
Sotheby's, 2nd September 1988

1750-1850年 寶石藍套白料螭龍葫蘆形鼻煙壺

2002

AN ENAMELED DOUBLE-GOURD GLASS SNUFF BOTTLE

1750-1820

2 3/8in (5.6cm) high

\$2,000 - 3,000

Provenance

Kenneth Brown Inc., La Jolla, California, acquired 21st June 1982

listed in an appraisal report compiled by Robert W.L. Kleiner,
Sotheby's, 2nd September 1988

1750-1820年 黑色料胎畫琺瑯彩葫蘆形鼻煙壺



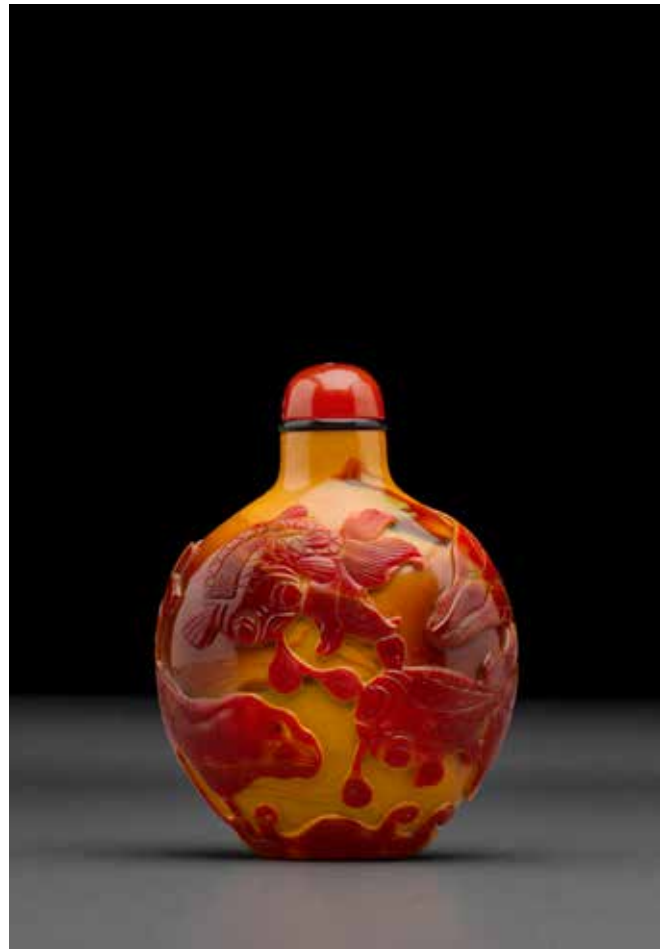
2003

2003
AN AQUAMARINE SNUFF BOTTLE CARVED WITH JI GONG
1850-1920
2in (5.1cm) high

\$1,500 - 2,500

Provenance
listed in an appraisal report compiled by Robert W.L. Kleiner,
Sotheby's, 2nd September 1988

1850-1920年 海藍寶石刻濟公鼻煙壺



2004

2004
AN IMITATION REALGAR GLASS 'GOLDFISH' SNUFF BOTTLE
1750-1850
2 1/4in (5.7cm) high

\$2,500 - 3,500

Provenance
Arts of China, Hong Kong, acquired 27th October 1989

Compare a very similar bottle, sold in our New York rooms, 13th
September 2017, sale 24316, lot 1137.

1750-1850年 仿雄黃料胎'金玉滿堂'鼻煙壺



2005

2005
**A WELL-HOLLOWED AND INSCRIBED SILHOUETTE
CHALCEDONY SNUFF BOTTLE**

1800-1860
2 1/4in (5.7cm) high

\$1,500 - 2,500

Provenance

Y. F. Yang & Co., Hong Kong, 9th October 1980

listed in an appraisal report compiled by Robert W.L. Kleiner,
Sotheby's, 2nd September 1988

1800-1860年 影子瑪瑙'春江水暖'鼻煙壺



2006

2006
**A CAMEO CHALCEDONY SNUFF BOTTLE CARVED WITH TWO
HORSES**

1780-1850
2 3/8in (6cm) high

\$1,500 - 2,500

Provenance

John Ford Associates, Inc., Baltimore, Maryland, acquired 31st
October 1979

listed in an appraisal report compiled by Robert W.L. Kleiner,
Sotheby's, 2nd September 1988

1780-1850年 帶皮瑪瑙巧雕雙駿圖鼻煙壺



2007

2007
A SAPPHIRE BLUE GLASS SNUFF BOTTLE

1820-1880
2 1/4in (5.7cm) high

\$2,000 - 3,000

Provenance

Kenneth Brown Inc., La Jolla, California, acquired 27th March 1981

listed in an appraisal report compiled by Robert W.L. Kleiner,
Sotheby's, 2nd September 1988

1820-1880年 寶石藍料帶鋪首環飾壽團螭龍鼻煙壺



2008

2008
A PINK AND WHITE SANDWICH GLASS 'MALLOW FLOWER' SNUFF BOTTLE

1800-1860
2in (5.1cm) high

\$2,000 - 3,000

Provenance

Arts of China, acquired 15th October 1993

1800-1860年 攪胎漸粉料金葵花鼻煙壺



2009

2009

TWO CRYSTAL SNUFF BOTTLES

1780-1880

2 1/4 and 2 1/2in (5.7 and 6.4cm) high

\$2,000 - 3,000

Provenance

hair crystal snuff bottle: Sotheby Parke Bernet, Los Angeles, 1st December 1981, lot 79

carved rock crystal snuff bottle: listed in an appraisal report compiled by Robert W.L. Kleiner, Sotheby's, 2nd September 1988

1780-1880年 水晶鼻煙壺兩隻



2010

2010

AN INSCRIBED SMOKY CRYSTAL SNUFF BOTTLE

Bottle: 1750-1860

2 1/2in (6.4cm) high

\$2,000 - 3,000

Provenance

C. F. Liang, Beverly Hills, California, acquired at the Snuff Bottle Convention, 15th October 1976

listed in an appraisal report compiled by Robert W.L. Kleiner, Sotheby's, 2nd September 1988

壺: 1750-1860年 煙晶刻御題詩文鼻煙壺



2011

A RARE BLUE AND WHITE PORCELAIN SNUFF BOTTLE

Jingdezhen kilns, 1800-1860

2 1/16in (5.2cm) high

\$1,500 - 2,500

Provenance

ex Bob C. Stevens Snuff Bottle Collection
Sotheby's New York, 25th June 1982, lot 74

listed in an appraisal report compiled by Robert W.L. Kleiner,
Sotheby's, 2nd September 1988

Illustrated and Published

The Collector's Book of Snuff Bottles, Bob C. Stevens, 1976,
Weatherhill, New York, p. 92, no. 257

1800-1860年 青花'連生貴子'圖鼻煙壺



2012

**TWO WHITE GLAZED PORCELAIN SNUFF BOTTLES WITH
MOLDED OR RETICULATED DECORATION**

Jingdezhen kilns, 1796-1850

2 1/4 (5.7cm) high

\$2,000 - 3,000

Provenance

reticulated and dual-layered 'fu-shou' snuff bottle: Y. F. Yang & Co.,
Hong Kong, acquired 9th October 1980

'Eighteen Luohan' snuff bottle: Fu Ming Fair Gallery, Pennsylvania,
acquired 18th October 1979

both listed in an appraisal report compiled by Robert W.L. Kleiner,
Sotheby's, 2nd September 1988

1796-1850年 施白釉模製及透雕瓷胎鼻煙壺各一



2013 (two views)

2013

A CARVED AND MOLDED LIME-GREEN GLAZED PORCELAIN SNUFF BOTTLE

Jingdezhen kilns, School of Wang Bingrong, dated *dinghai* by inscription, 1887/1947

2 3/8in (6cm) high

\$1,500 - 2,500

1887/1947年 王炳榮風格
模刻施青椽釉牧童圖瓷胎鼻煙壺

2014

A FINELY MOLDED AND IRON-RED PAINTED PORCELAIN 'GOLDFISH' SNUFF BOTTLE

Jingdezhen kilns, 1821-1850

2 1/4in (5.7cm) high

\$1,000 - 1,500

Provenance

The Chinese Porcelain Co., New York, acquired 3rd October 1991

1821-1850年 模製畫磬紅金魚鼻煙壺



2014



2015

2015
A SMALL LAVENDER JADEITE SNUFF BOTTLE

1850-1910
1 7/8in (4.8cm) high

\$2,000 - 3,000

Provenance

Y. F. Yang & Co., Hong Kong, acquired 4th May 1976

listed in an appraisal report compiled by Robert W.L. Kleiner, Sotheby's, 2nd September 1988

1850-1910年 紫羅蘭翡翠刻鋪首環鼻煙壺



2016

2016
A FINE WHITE JADE SNUFF BOTTLE

1800-1880
2 5/16in (5.9cm) high

\$3,000 - 5,000

Provenance

John Ford Associates, Inc., Baltimore, Maryland, acquired 20th October 1977

listed in an appraisal report compiled by Robert W.L. Kleiner, Sotheby's, 2nd September 1988

1800-1880年 白玉刻雙喜帶鋪首環鼻煙壺



2017

2017
A PALE-YELLOW JADE SNUFF BOTTLE

1770-1850
2 3/8in (6cm) high

\$1,800 - 2,500

Provenance

Y. F. Yang & Co., Hong Kong, acquired 25th November 1984

1770-1850年 素光黃玉鼻煙壺



2018

2018
A WHITE AND RUSSET HARDSTONE SNUFF BOTTLE CARVED WITH ARCHAIC COINS

Late 19th/20th century
2 7/8in (6.7cm) high

\$1,800 - 2,500

Provenance

listed in an appraisal report compiled by Robert W.L. Kleiner, Sotheby's, 2nd September 1988

十九世紀末/二十世紀 石料刻古錢幣鼻煙壺



2019

2019
A RARE BLACK AND GRAY JADE 'CRAB AND REED' SNUFF BOTTLE

1820-1880
2 1/4in (5.7cm) high

\$3,000 - 5,000

Provenance

Ex Joan Wasserman Collection
Hugh Moss Limited, London, acquired 3rd November 1975

listed in an appraisal report compiled by Robert W.L. Kleiner, Sotheby's, 2nd September 1988

1820-1880年 黑灰玉'二甲傳臚'鼻煙壺

2020

A MOSS AGATE SNUFF BOTTLE

1780-1850

2 3/8in (6cm) high

\$1,200 - 1,800

Provenance

Hugh Moss Limited, London, acquired 3rd November 1975

listed in an appraisal report compiled by Robert W.L. Kleiner, Sotheby's, 2nd September 1988

1780-1850年 天然青苔紋瑪瑙鼻煙壺



2020

2021

TWO CARVED CHALCEDONY SNUFF BOTTLES

1780-1860

2 1/4in (5.7cm) high

\$1,500 - 2,500

Provenance

bottle carved with a lion dog: Ashkenazie \$ Co., San Francisco, acquired 9th July, 1986

listed in an appraisal report compiled by Robert W.L. Kleiner, Sotheby's, 2nd September 1988

1780-1860年 瑪瑙鼻煙壺兩隻



2021



2022
**TWO EXQUISITELY OVERLAID GLASS
 SNUFF BOTTLES**

Yangzhou School, 1840-1900
 2 3/8 and 2 1/2in (6 and 6.4cm) high

\$1,800 - 2,500

Provenance

dark-brown overlay green glass bottle: Y. F. Yang & Co., Hong Kong, acquired 9th October 1980

listed in an appraisal report compiled by Robert W.L. Kleiner, Sotheby's, 2nd September 1988

1840-1900年，揚州作套色料胎鼻煙壺兩隻
 深褐色套綠料'百鳥迎春'鼻煙壺：《正可》陽
 文款

2022



2023
**TWO OVERLAY DECORATED GLASS
 SNUFF BOTTLES**

1800-1860
 2 3/16 and 2 7/8in (5.6 and 7.4cm) high

\$1,200 - 1,800

Provenance

lacquer-red overlay 'dragon' snuff bottle: Frank Caro Co., New York, acquired 7th October 1971

black overlay 'archaic bronze' snuff bottle: Evelyne J. King, San Francisco, California

both bottles listed in an appraisal report compiled by Robert W.L. Kleiner, Sotheby's, 2nd September 1988

1800-1860年 套料鼻煙壺兩隻

2023



2024

THREE MONOCHROME GLASS SNUFF BOTTLES

1750-1880
2 1/2 to 2 3/4in (6.4 to 7cm) high

\$2,000 - 3,000

Provenance

ruby red glass bottle: Sotheby Parke Bernet Inc., New York, 11th October 1979, lot 44

transparent blue glass bottle and turquoise glass bottle: Y. F. Yang & Co., Hong Kong, acquired 8 October 1983

all listed in an appraisal report compiled by Robert W.L. Kleiner, Sotheby's, 2nd September 1988

1750-1880年 單色料胎鼻煙壺三隻



2025

A CARVED TOURMALINE SNUFF BOTTLE

1800-1880
2 1/8in (5.4cm) high

\$2,000 - 3,000

Provenance

Kenneth Brown Inc., La Jolla, California, acquired 27th March 1981

listed in an appraisal report compiled by Robert W.L. Kleiner, Sotheby's, 2nd September 1988

1800-1880年 碧璽開光雕花卉鼻煙壺



2026 (two views)

2026

A RARE YELLOW GLASS SNUFF BOTTLE WITH A WAVING-RIB DESIGN

Imperial, Palace Workshops, Beijing, 1750-1840
2 3/8in (6cm) high

\$2,500 - 3,500

Provenance

Y. F. Yang & Co., Hong Kong, acquired 4th May 1976

listed in an appraisal report compiled by Robert W.L. Kleiner,
Sotheby's, 2nd September 1988

Compare a closely related bottle, sold in our Hong Kong rooms, 26th
May 2014, sale 21882, lot 25. Refer also to another example illustrated
by Moss, Graham and Tsang, *The Art of The Chinese Snuff Bottle:*
Vol.2, New York, 1993, p.587, no.351.

1750-1840年 御製 宮廷作坊 北京
黃料波紋鼻煙壺



2027 (two views)

2027

A DELICATELY ENAMELED WHITE GLASS SNUFF BOTTLE

Guyue Xuan mark, Yangzhou, 1770-1799

2 1/8in (5.4cm) high

\$3,000 - 4,000

Provenance

J.W.A. International, Inc., Florida, acquired at Chicago Convention,
28th October 1989

1770-1799年 揚州 白料畫琺瑯雉雞壽石花卉圖鼻煙壺
《古月軒》 礬紅款



2028

2028

A FACETED 'AMETHYST' GLASS SNUFF BOTTLE

Probably Imperial, attributed to the Palace Workshops, Beijing, 1720-1780
2 3/8in (6cm) high

\$1,000 - 1,500

Provenance

Robert Kleiner & Co. Ltd., London, acquired 16th October 1993

1720-1780年 擬御製 宮廷作坊 北京
仿紫晶料胎刻稜紋鼻煙壺



2029

2029

A GOLD AVENTURINE-SPLASHED PALE BLUE GLASS SNUFF BOTTLE

Probably Imperial, attributed to the Palace Workshops, Beijing, 1740-1820
1 11/16in (4.3cm) high

\$1,000 - 1,500

Provenance

Ashkenazie & Co., San Francisco, acquired 29th October 1988

1740-1820年 擬御製 宮廷作坊 北京
透明淡藍灑金料胎鼻煙壺



2030

2030

A MOTTLED GREEN JADEITE SNUFF BOTTLE

1850-1920
2 1/16in (5.2cm) high

\$700 - 1,000

Provenance

C.C. Bozzo, Alexandria, Virginia, acquired 19th August 1991

1850-1920年 素光翡翠鼻煙壺

2031

TWO AGATE SNUFF BOTTLES

1780-1880

2 1/16 and 2 1/8in (5.2 and 5.4cm) high

\$2,000 - 3,000

Provenance

macaroni agate snuff bottle: Arts of China, Hong Kong, acquired 27th October 1989

banded agate snuff bottle: John Ford Associates, Inc., acquired 29th October 1989

1780-1880年 帶天然紋瑪瑙鼻煙壺兩隻



2031

2032

TWO AMBER SNUFF BOTTLES

1820-1920

2 and 2 3/8in (5.1 and 6cm) high

\$1,200 - 1,800

Provenance

root amber bottle with faux lion mask-and-ring handles: Sotheby Parke Bernet Inc., New York, 10th March 1980, lot 150

Baltic amber snuff bottle: Rare Art, Inc., New York, acquired 16th March 1972

both listed in an appraisal report compiled by Robert W.L. Kleiner, Sotheby's, 2nd September 1988

1820-1920年 琥珀鼻煙壺兩隻



2032



2033

2033

**A FAMILLE ROSE ENAMELED
PORCELAIN SNUFF BOTTLE**

Jingdezhen kilns, Imperial, Daoguang mark
and of the period, 1821-1850
2 1/4in (5.7cm) high

\$2,200 - 3,000

Provenance

The Chinese Porcelain Co., New York,
acquired 3rd October 1991

御製 清道光 1821-1850
藍地粉彩蕃蓮紋鼻煙壺
《道光年製》 磬紅四字篆書款



2034

2034

**TWO MOLDED AND GLAZED PORCELAIN
SNUFF BOTTLES**

Jingdezhen kilns, 1796-1850
2 7/16 and 2 1/2in (6.2 and 6.4cm) high

\$1,000 - 1,500

Provenance

lobed snuff bottle decorated with coins:
Sotheby Parke Bernet, acquired 23rd April
1975

listed in an appraisal report compiled
by Robert W.L. Kleiner, Sotheby's, 2nd
September 1988

molded and cinnabar lacquer-red glazed
'bajixiang' snuff bottle: Kenneth Brown Inc.,
La Jolla, California, acquired 21st June 1982

1796-1850年 模製施釉瓷胎鼻煙壺兩隻



2035

2035
TWO GREEN OVERLAID GLASS SNUFF BOTTLES

1750-1850
 2 1/4 and 2 1/2in (5.7 and 6.4cm) high

\$2,000 - 3,000

Provenance

transparent green overlaid 'crab and reed' snuff bottle: Ashkenazie & Co., San Francisco, acquired 9th July 1986

listed in an appraisal report compiled by Robert W.L. Kleiner, Sotheby's, 2nd September 1988

grass green overlaid 'bat' snuff bottle: Y. F. Yang & Co., Hong Kong, acquired 9th October 1980

1750-1850年 套綠色料胎鼻煙壺兩隻

2036

A CRANBERRY-RED OVERLAID 'SNOWFLAKE' GLASS SNUFF BOTTLE

1750-1820
 2 1/2in (6.4cm) high

\$1,000 - 1,500

Provenance

Y. F. Yang & Co., Hong Kong, acquired 19th November 1979

listed in an appraisal report compiled by Robert W.L. Kleiner, Sotheby's, 2nd September 1988

1750-1820年 霏雪地套紅料'暗香疏影'鼻煙壺



2036



2037

2037
A CINNABAR LACQUERED DOUBLE-GOURD SNUFF BOTTLE

1820-1880
 2 3/4in (7cm) high

\$1,000 - 1,500

Provenance

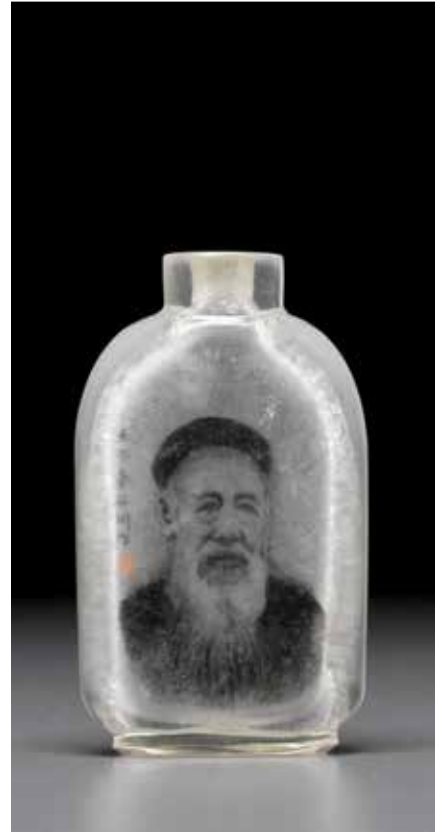
Marie A. Diehl Antiques, New York, acquired 30th September 1972

listed in an appraisal report compiled by Robert W.L. Kleiner, Sotheby's, 2nd September 1988

1820-1880年 剔紅葫蘆形刻山水人物鼻煙壺



2038 (two views)



2039

2038

AN INSIDE-PAINTED GLASS SNUFF BOTTLE

Zhou Leyuan, dated by inscription to *xinmao*, corresponding to 1891
2 3/8in (6cm) high

\$1,500 - 2,000

Provenance

listed in an appraisal report compiled by Robert W.L. Kleiner,
Sotheby's, 2nd September 1988

周樂元 1891年 玻璃內畫'功名富貴'鼻煙壺
《辛卯長麥作於京師藕香堂軒周樂元》

2039

AN INSIDE-PAINTED GLASS PORTRAIT SNUFF BOTTLE

Shi Chuan, dated by inscription to *renzi*, corresponding to 1972
2 5/8in (6.7cm) high

\$1,500 - 2,500

Provenance

Jin Hing & Co., Los Angeles, California, acquired 5th October 1983
listed in an appraisal report compiled by Robert W.L. Kleiner,
Sotheby's, 2nd September 1988

石川 1972年 玻璃雙面內畫肖像鼻煙壺
《壬子春石川作》款



2040 (two views)



2041

2040
AN INSIDE-PAINTED ROCK CRYSTAL SNUFF BOTTLE

Ye Family Studio, attributed to Ye Benqi, 1965
 2 1/2in (6.4cm) high

\$2,000 - 3,000

Provenance

Sotheby Parke Bernet Inc., New York, 14th-15th March 1979, sale 4223, lot 50

葉氏家族 擬叶奉祺作 1965年 水晶內畫花鳥鼻煙壺
 《乙巳仲夏寫於京師葉仲三》款

2041
A FINE SHADOW CHALCEDONY SNUFF BOTTLE

1780-1850
 2 3/8in (6cm) high

\$2,500 - 4,000

Provenance

J.W.A. International, Inc. Florida, acquired 1st November 1988

1780-1850年 影子瑪瑙‘孟浩然踏雪尋梅’鼻煙壺



2042



2043

2042

TWO METAL SNUFF BOTTLES

Parcel-gilt silver 'dragon' snuff bottle: 1750-1830
 Together with three hinged enamel decorated medicine bottles.
 2 1/4 and 2 1/2in (5.7 and 6.4cm) high

\$3,000 - 4,000

Provenance

gilt metal 'dragon and phoenix' snuff bottle: Liberty & Co. Ltd., London, acquired 29th October 1974

hinged medicine bottles: Joseph Kosel, acquired in April 1972

all listed in an appraisal report compiled by Robert W.L. Kleiner, Sotheby's, 2nd September 1988

金屬鼻煙壺兩隻及合頁連體藥壺三隻
 雙壁透雕銀質龍團鼻煙壺: 1750-1830年

2043

A CANTON ENAMELED CONJOINED COPPER SNUFF BOTTLE

1750-1820
 2in (5.1cm) high

\$2,200 - 3,500

Provenance

Sotheby Parke Bernet, New York, by repute

listed in an appraisal report compiled by Robert W.L. Kleiner, Sotheby's, 2nd September 1988

1750-1820年 廣作銅胎畫琺瑯'五蝠駢臻'雙連鼻煙壺

2044

A MOTHER-OF-PEARL 'DRAGON' SNUFF BOTTLE

1840-1910

2 1/8in (5.4cm) high

\$1,000 - 1,500

Provenance

Kenneth Brown Inc., La Jolla, California, acquired 21th June 1982

listed in an appraisal report compiled by Robert W.L. Kleiner, Sotheby's, 2nd September 1988

1840-1910年 螺鈿刻夔龍鼻煙壺



2044

2045

A SHADOW 'HAWK AND ROCK' CHALCEDONY SNUFF BOTTLE

1800-1860

2 3/8in (6cm) high

\$1,000 - 1,500

Provenance

M. A. Diehl, acquired 7th November 1972

listed in an appraisal report compiled by Robert W.L. Kleiner, Sotheby's, 2nd September 1988

1800-1860年 影子瑪瑙鷹圖鼻煙壺



2045

2046

AN OCTAGONAL CHALCEDONY SNUFF BOTTLE

1800-1880

1 7/8in (4.7cm) high

\$700 - 900

Provenance

Joseph Kosel, acquired in April 1972

listed in an appraisal report compiled by Robert W.L. Kleiner, Sotheby's, 2nd September 1988

1800-1880年 八楞形瑪瑙鼻煙壺



2046



2047



2049



2048

2047
A CARVED CORAL 'LI TIEGUAU' SNUFF BOTTLE
 1820-1900
 2in (5.1cm) high

\$1,800 - 2,500

Provenance
 Harold Torgeson, Laguna Beach, California, acquired 3rd July 1971

listed in an appraisal report compiled by Robert W.L. Kleiner, Sotheby's, 2nd September 1988

1820-1900年 珊瑚刻李鐵拐葫蘆形鼻煙壺

2048
FOUR STONE SNUFF BOTTLES
 Late 19th-20th century
 2 to 2 3/4in (5.1 to 7cm) high

\$1,200 - 1,500

Provenance
 fossiliferous limestone snuff bottle: Y. F. Yang & Co., Hong Kong, acquired 25th November 1983

lapis lazuli snuff bottle carved with a crane and pine tree: Harold Torgeson, Laguna Beach, California, acquired 3rd, July 1971

lapis lazuli snuff bottle in the shape of a crouching beast: Kenneth Brown Inc., La Jolla, California, acquired 25th January 1978

十九世紀晚期至二十世紀 石料鼻煙壺三隻

2049
TWO ORGANIC MATERIAL SNUFF BOTTLES
 1820-1900
 2 and 2 1/2in (5.1 and 6.4cm) high

\$1,500 - 2,500

Provenance
 molded gourd snuff bottle: Clare Lawrence, London, acquired 20th November 1991

silver-mounted coconut shell snuff bottle: Fu Ming Fair Gallery, Pennsylvania, acquired 24th October 1970

listed in an appraisal report compiled by Robert W.L. Kleiner, Sotheby's, 2nd September 1988

1820-1900年 有機材質鼻煙壺兩隻



2050

THREE ENAMELED METAL SNUFF BOTTLES

1820-1920
 1 3/8 to 2 3/4in (3.5 to 7cm) high

\$1,500 - 2,500

Provenance

tapering cylindrical cloisonné enameled snuff bottle: Madison Galleries, Ltd., New York, acquired 1971

enameled silver 'bajixiang' snuff bottle: Sothby's New York, 16th April 1985, lot 0147

rounded cloisonné enameled snuff bottle: Robert Hall, France, acquired 30th September 1992

1820-1920年 景泰藍及金屬胎飾瑤瑯八吉祥鼻煙壺三隻



2051

2051

A CARVED JASPER SNUFF BOTTLE

1840-1920
 2 1/2in (6.4cm) high

\$700 - 900

Provenance

Joseph Kosel, acquired in April 1972

listed in an appraisal report compiled by Robert W.L. Kleiner, Sotheby's, 2nd September 1988

1840-1920年 羊肝瑪瑙刻虎鼻煙壺



2052

2052

TWO FINELY LACQUERED SNUFF BOTTLES

19th-early 20th century
 2 1/16 to 2 1/8in (5.2 to 5.4cm) high

\$2,200 - 3,500

Provenance

Fuzhou lacquered snuff bottle with leafy flower decoration: Sotheby Parke Bernet, New York, 17-18th March 1977, lot 102

rounded lac-burgauté snuff bottle: Madison Galleries, Ltd., New York, acquired 1971

both listed in an appraisal report compiled by Robert W.L. Kleiner, Sotheby's, 2nd September 1988

十九至二十世紀初 漆飾鼻煙壺兩隻



2053 (two views)

2053

A RARE INSIDE-PAINTED ROCK CRYSTAL SNUFF BOTTLE

Ma Shaoxuan (1867-1939)

2 1/2in (6.4cm) high

\$3,500 - 5,000

Provenance

Marie A. Diehl Antiques, New York, acquired 30th September 1972

listed in an appraisal report compiled by Robert W.L. Kleiner,
Sotheby's, 2nd September 1988

馬少宣 (1867-1939) 水晶雙面內畫鼻煙壺
《馬少宣》款



2054 (two views)

2054

AN INSIDE-PAINTED CHALCEDONY SNUFF BOTTLE

Wang Xisan (b. 1938), 1981, the bottle: 1800-1860

2 3/8in (6cm) high

\$3,000 - 5,000

Provenance

Y. F. Yang & Co., Hong Kong, acquired 30th November 1982

listed in an appraisal report compiled by Robert W.L. Kleiner,
Sotheby's, 2nd September 1988

壺: 1800-1860年

內畫: 王習三 (1938年生) 1981年作 瑪瑙內畫'牧牛圖'鼻煙壺
《辛酉秋月王習三作》款



2055



2056



2057

**2055
A WELL-HOLLOWED SHIELD-FORM
RUSSET JADE SNUFF BOTTLE**

1750-1850
2 3/8in (6cm) high

\$1,200 - 1,800

Provenance

Kenneth Brown, La Jolla, California, acquired
25th January 1978

1750-1850年 淺浮雕蒲紋銹色玉鼻煙壺

**2056
A WELL-HOLLOWED GREEN JADEITE
SNUFF BOTTLE**

1780-1860
2 3/16in (5.6cm) high

\$2,000 - 3,000

Provenance

Frank Caro Co., New York, acquired 28th
March 1973

listed in an appraisal report compiled
by Robert W.L. Kleiner, Sotheby's, 2nd
September 1988

1780-1860年 素光翡翠鼻煙壺

**2057
A GREEN JADEITE SNUFF BOTTLE AND
A HARDSTONE SNUFF BOTTLE**

Late 19th/20th century
2 1/8 and 2 1/2in (5.4 and 6.4cm) high

\$1,800 - 2,500

Provenance

both listed in an appraisal report compiled
by Robert W.L. Kleiner, Sotheby's, 2nd
September 1988

十九世紀晚期/二十世紀 素光翡翠鼻煙壺及刻
人物石料鼻煙壺各一

2058

A CARVED AND CAMEL GLAZED PORCELAIN SNUFF BOTTLE

Jingdezhen kilns, School of Wang Bingrong, 1862-1910
2 3/4in (7cm) high

\$1,000 - 1,500

Provenance

listed in an appraisal report compiled by Robert W.L. Kleiner, Sotheby's, 2nd September 1988

1862-1910年 王炳榮風格
施黃褐釉刻梅花圖瓷胎鼻煙壺



2058

2059

TWO UNDERGLAZE BLUE AND COPPER-DED DECORATED PORCELAIN 'WARRIOR' SNUFF BOTTLES

Jingdezhen kilns, 1830-1880
3 1/8 and 3 5/8in (8 and 9.3cm) high

\$1,000 - 1,500

Provenance

elongated ovoid snuff bottle painted with a theatrical scene: Y. F. Yang, Hong Kong, acquired 25th November 1984

both listed in an appraisal report compiled by Robert W.L. Kleiner, Sotheby's, 2nd September 1988

1830-1880年 青花釉里紅人物鼻煙壺兩隻



2059

2060

TWO SMALL BLUE AND WHITE PORCELAIN SNUFF BOTTLES

Jingdezhen kilns, 1820-1920
1 5/8 and 2 1/16in (4.2 and 5.3cm) high

\$1,000 - 1,500

Provenance

snuff bottle painted with boys holding lingzhi: Fun Ming Fair Gallery, Pennsylvania, acquired 7th October 1983

snuff bottle decorated with a 'Journey to the West' theme: J.W.A. International, Inc., Florida, acquired 20th September 1992

1820-1920年 青花人物鼻煙壺兩隻



2060



2061

2061

THREE PORCELAIN SNUFF BOTTLES

Jingdezhen kilns, 1800-1910
2 to 2 7/16in (5.1 to 6.2cm) high

\$1,200 - 1,800

Provenance

blue and white snuff bottle painted with a woman and young children in a garden: Y. F. Yang, Hong Kong, acquired 25th November 1983

listed in an appraisal report compiled by Robert W.L. Kleiner, Sotheby's, 2nd September 1988

underglaze blue and copper-red decorated 'Children at Play' snuff bottle: Clare Lawrence, London, acquired 20th November 1991

1800-1910年 青花及青花釉里紅鼻煙壺三隻



2062

2062

THREE BLUE AND WHITE PORCELAIN SNUFF BOTTLES

Jingdezhen kilns, 1800-1910
1 7/8 to 2 5/8in (4.8 to 6.7cm) high

\$1,200 - 1,800

Provenance

blue and white 'flower-ball' snuff bottle: Y. F. Yang & Co., Hong Kong, acquired 25th November 1983

blue and white 'lotus scrolls' snuff bottle: listed in an appraisal report compiled by Robert W.L. Kleiner, Sotheby's, 2nd September 1988

blue and white 'dragon' snuff bottle: Dennis G. Crow, Los Angeles, acquired 16th September 1992

1800-1910年 青花鼻煙壺三隻



2063

2063

THREE BLUE AND WHITE 'FIGURAL' SNUFF BOTTLES

Jingdezhen kilns, 1820-1910
2 3/8 to 3 1/4in (6 to 8.3cm) high

\$1,000 - 1,500

Provenance

tapering cylindrical snuff bottle: Y.F. Yang, Hong Kong, acquired 25th November 1983

blue and white soft paste snuff bottle painted with women and children: Robert Hall, Paris, acquired 30th September 1992

1820-1910年 青花人物鼻煙壺三隻



2064

2064
A BLUE AND WHITE PORCELAIN 'DRAGON' SNUFF BOTTLE
 Jingdezhen kilns, 1820-1860
 3 1/4in (8.3cm) high

\$1,200 - 1,800

Provenance
 listed in an appraisal report compiled by Robert W.L. Kleiner,
 Sotheby's, 2nd September 1988

1820-1860年 青花騰龍鼻煙壺

2065
FOUR BLUE AND WHITE PORCELAIN 'BUDDHIST LION' SNUFF BOTTLES
 Jingdezhen kilns, 1800-1880
 2 1/2 to 2 7/8in (6.4 to 7.4cm)

\$1,000 - 1,500

Provenance
 tapering cylindrical soft paste blue and white snuff bottle: Y. F. Yang,
 Hong Kong, acquired 25th November 1984

cylindrical snuff bottle painted with lions and bats: Fun Ming Hua
 Gallery, Pennsylvania, by repute

1800-1880年 青花獅子圖鼻煙壺四隻



2065



2066

2066
THREE INSCRIBED BLUE AND WHITE PORCELAIN SNUFF BOTTLES

Jingdezhen kilns, 1830-1880
 2 5/8 to 2 3/4in (6.7 to 7cm) high

\$1,000 - 1,500

Provenance
 ovoid-form snuff bottle: Robert Hall, Paris, acquired 30th September
 1992

cylindrical-form snuff bottle: Robert Hall, acquired prior to 23rd
 October 1992

1830-1880年 青花帶詩文鼻煙壺三隻



2067

2067
AN YIXING POTTERY 'CHRYSANTHEMUM' SNUFF BOTTLE
1820-1880
2 1/8in (5.4cm) high

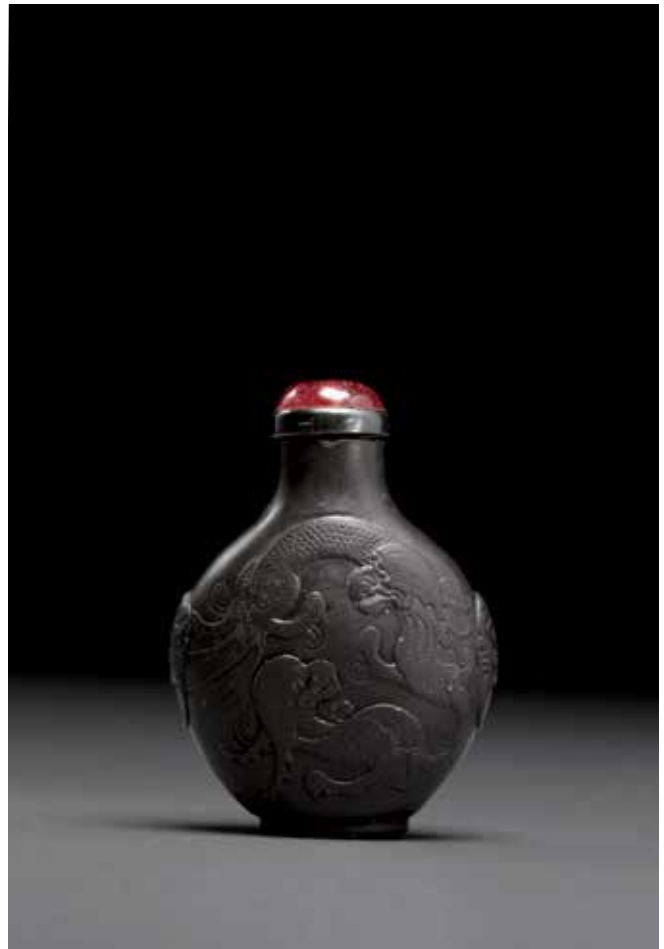
\$1,000 - 1,500

Provenance
Good Brothers & Co., Hong Kong, acquired 3rd May 1976

listed in an appraisal report compiled by Robert W.L. Kleiner,
Sotheby's, 2nd September 1988

A nearly identical Yixing snuff bottle in the form of a chrysanthemum
flower-head, from the Madelana Collection, is illustrated in *Journal*,
winter 2011, ICSBS, front cover.

1820-1880年 宜興紫砂菊花形鼻煙壺



2068

2068
A CARVED DUAN INKSTONE 'DRAGON' SNUFF BOTTLE
1750-1850
2 1/16in (5.3cm) high

\$1,200 - 1,800

Provenance
Joseph Kosel, Florida, acquired in 1974

listed in an appraisal report compiled by Robert W.L. Kleiner,
Sotheby's, 2nd September 1988

1750-1850年 端石刻雙龍帶鋪首環鼻煙壺



2069 (two views)

2069

A CARVED WHITE JADE SNUFF BOTTLE

1800-1860

2 1/4in (5.7cm) high

\$4,000 - 6,000

Provenance

Y. F. Yang & Co., Hong Kong, acquired 25th November 1984

listed in an appraisal report compiled by Robert W.L. Kleiner, Sotheby's, 2nd September 1988

1800-1860年 白玉刻松梅竹蘭圖鼻煙壺
《子岡》款

2070

A GROUP OF BOOKS, CATALOGS, AND JOURNALS ON CHINESE SNUFF BOTTLES

Including eleven books, seventeen catalogs, and thirty-seven ICSBS journals.

\$600 - 800

一組有關中國鼻煙壺之書籍、目錄、及國際中國鼻煙壺協會期刊

Due to the large number of pieces in this lot, condition reports and photos of individual items will not be available.

鑒於本組物品所含數量，各體細節照片及品像報告將不予以提供

**CHINESE SNUFF BOTTLES FROM
THE ESTATE OF A GENTLEMAN**

Lots 2071 - 2149





2071

2071
A LAC BURGAUTÉ SNUFF BOTTLE

Qianli mark, 1780-1860

2 3/8in (6cm) high

\$1,800 - 2,500

1780-1860年 黑漆嵌螺鈿壽字鼻煙壺
《千里》款



2072

2072
TWO CARVED AMBER SNUFF BOTTLES

1850-1930

2 and 2 3/8in (5.1 and 6cm) high

\$2,000 - 3,000

1850-1930年 琥珀鼻煙壺兩隻



2073

2073

A RUBY-PINK 'LOTUS' GLASS SNUFF BOTTLE

Possibly Imperial, attributed to the Palace Workshops, Beijing,
1780-1860

2in (5.1cm) high

\$2,500 - 3,500

1780-1860年 擬御製 宮廷作坊 北京
寶石粉紅料胎刻蓮花紋鼻煙壺



2074

2074

A GREEN OVERLAY BROWN GLASS SNUFF BOTTLE

1770-1850

2 3/8in (6cm) high

\$1,500 - 2,500

1770-1850年 褐色地套綠料梅花圖鼻煙壺



2075 (two views)

2075

A 'BROCADE-WRAPPED' PINK GLASS SNUFF BOTTLE

Probably Imperial, attributed to the Palace Workshops, Beijing, 1780-1850

2 3/8in (6cm) high

\$2,200 - 3,500

1780-1850年 擬御製 宮廷作坊 北京
攪胎粉料包袱錦紋鼻煙壺

Compare a yellow glass bottle with a nearly identical design from the Joe Grimberg Collection, dated 1750-1795, sold at Sotheby's, New York, 14th September 2010, lot 21.

2076

A BLUE OVERLAY WHITE GLASS 'CHILONG' SNUFF BOTTLE

1780-1840

2 7/8in (7.3cm) high

\$2,000 - 3,000

1780-1840年 白地套藍料螭龍紋鼻煙壺



2076



2077
A GREEN OVERLAY 'INSECT AND PLANT' GLASS SNUFF BOTTLE

1850-1920
2in (5.1cm) high

\$1,000 - 1,500

1850-1920年 霏雪地套淡綠料刻昆蟲植物鼻煙壺

Please note that this lot is being offered without reserve
無底價拍品

2077



2078
A CARVED CAMEO CHALCEDONY SNUFF BOTTLE

1860-1940
2 1/2in (6.4cm) high

\$1,200 - 1,800

1860-1940年 瑪瑙巧雕盆花鼻煙壺

2078



2079
TWO CARVED CHALCEDONY SNUFF BOTTLES

20th century
1 5/8 and 1 7/8in (4.2 and 4.8cm) high

\$1,500 - 2,500

二十世紀 瑪瑙鼻煙壺兩隻

2079

2080

TWO OVERLAY DECORATED GLASS SNUFF BOTTLES

1800-1910

2 3/4 and 2 7/8in (7 and 7.3cm) high

\$2,000 - 3,000

1800-1910年 套色玻璃鼻煙壺兩隻



2080

2081

TWO RUBY-RED GLASS SNUFF BOTTLES

1800-1880

2 1/4 and 2 1/2in (5.7 and 6.4cm) high

\$1,500 - 2,500

1800-1880年 寶石紅料胎鼻煙壺兩隻



2081

2082

TWO INSIDE-PAINTED SNUFF BOTTLES

Rock crystal bottle signed by Zhou Shaoyuan: 1908

2 1/4 and 2 1/2in (5.7 and 6.4cm) high

\$1,200 - 1,800

內畫鼻煙壺兩隻

周少元 1908年 水晶內畫鼻煙壺 《周少元》款

1982年 玻璃內畫鼻煙壺 《一壺齋董[]》款



2082



2083

2083
A WHITE JADE 'FINGER CITRON' SNUFF BOTTLE
1850-1930
2 1/4in (6.4)

\$2,500 - 4,000

1850-1930年 白玉雕佛手形鼻煙壺



2084

2084
TWO HARDSTONE SNUFF BOTTLES
20th century
2 1/2in (6.4cm) height of each

\$1,500 - 2,500

二十世紀 石料鼻煙壺兩隻

2085

TWO BLUE AND WHITE PORCELAIN 'DRAGON' SNUFF BOTTLES

Jingdezhen kilns, 1800-1860

2 7/8 and 3 1/8in (7.3 and 8cm) high

\$1,500 - 2,500

1800-1860年 青花繪龍紋鼻煙壺兩隻



2085

2086

THREE BLUE AND WHITE PORCELAIN SNUFF BOTTLES

Jingdezhen kilns, 1820-1870

3 to 3 3/4in (7.6 to 9.6cm) high

\$1,500 - 2,500

1820-1870年 青花鼻煙壺三隻



2086

2087

THREE BLUE AND WHITE PORCELAIN 'FIGURAL' SNUFF BOTTLES

Jingdezhen kilns, 1800-1880

2 1/2 to 3 1/8in (6.4 to 8cm) high

\$1,200 - 1,800

1800-1880年 青花人物鼻煙壺三隻



2087



2088
A CARVED CHALCEDONY 'COIN' SNUFF BOTTLE
1820-1930
1 7/8in (4.8cm) high

\$1,500 - 2,500

1820-1930年 瑪瑙刻貨幣紋鼻煙壺

2088



2089
A YELLOW GROUND CLOISSONNÉ ENAMELED SNUFF BOTTLE
1800-1900
2 7/8in (7.3cm) high

\$1,200 - 1,800

1800-1900年 黃地景泰藍纏枝蓮紋帶鋪首環鼻煙壺

2089



2090
A MOSS AGATE SNUFF BOTTLE
1850-1940
2 1/4in (5.7cm) high

\$1,200 - 1,800

1850-1940年 青苔瑪瑙刻雲霧窮閣圖鼻煙壺

2090



2091 (two views)

2091
A CARVED CHALCEDONY SNUFF BOTTLE
 20th century
 2 1/8in (5.4cm) high

\$2,000 - 3,000

二十世紀 瑪瑙刻布袋和尚鼻煙壺

2092
A CHALCEDONY SNUFF BOTTLE CARVED WITH A BOY AND A LION DOG
 Suzhou school, 1800-1860
 3in (7.7cm) high

\$1,800 - 2,500

1800-1860年 蘇州派風格 瑪瑙巧雕童子戲犬鼻煙壺



2092



2093 (two views)

2093

A YELLOW AND RUSSET JADE SNUFF BOTTLE

1820-1880

2 1/16in (5.2cm) high

\$5,000 - 7,000

1820-1880年 黄玉带皮'仙猴献寿'鼻烟壶

2094

A WHITE JADE 'BASKET-WEAVE' SNUFF BOTTLE

1840-1920

2 5/16in (5.9cm) high

\$3,000 - 5,000

1840-1920年 白玉油篾纹鼻烟壶



2094

2095

THREE OVERLAID GLASS SNUFF BOTTLES

Late 19th-20th century

2 1/2 to 2 3/4in (5.7 to 7cm) high

\$1,200 - 1,800

十九世紀末至二十世紀 套料鼻煙壺三隻



2095

2096

TWO WELL-HOLLOWED CHALCEDONY SNUFF BOTTLES

1820-1900

2 1/4 and 2 3/8in (5.7 and 6cm) high

\$1,200 - 1,800

1820-1900年 帶鋪首環瑪瑙鼻煙壺兩隻



2096

2097

TWO WELL-HOLLOWED AGATE SNUFF BOTTLES

1820-1910

2 1/2 and 2 5/8in (6.4 and 6.7cm) high

\$1,200 - 1,800

1820-1910年 帶天然紋瑪瑙鼻煙壺兩隻



2097



2098

2098
TWO OVERLAY DECORATED GLASS SNUFF BOTTLES
Yangzhou school, 1830-1900
2 and 2 1/4in (5.1 and 5.7cm) high

\$2,000 - 3,000

1830-1900年 揚州流派 套料鼻煙壺兩隻



2099

2099
TWO RUBY-RED GLASS SNUFF BOTTLES
1800-1880
2 and 2 3/8in (5.1 and 6cm) high

\$1,500 - 2,500

1800-1880年 寶石紅料胎鼻煙壺兩隻



2100

2100
A MULTI-COLOR OVERLAY WHITE GLASS SNUFF BOTTLE
1800-1880
2 1/2in (6.4cm) high

\$1,500 - 2,500

1800-1880年 混白地套多色料花蝶圖鼻煙壺



2101 (two views)

2101
**AN INSCRIBED CHALCEDONY SNUFF BOTTLE CARVED WITH
A FIGURE GROOMING A HORSE**

Suzhou, School of Zhiting, 1750-1830
2in (5.1cm) high

\$6,000 - 8,000

1750-1830年 蘇州 芝亭流派
瑪瑙巧雕'洗馬圖'帶詩文鼻煙壺



2102
A CARVED RUSSET JADE SNUFF BOTTLE
 20th century
 2 1/8in (5.4cm) high

\$1,500 - 2,500

二十世紀 青褐色玉刻松鶴山水圖鼻煙壺

2102



2103
TWO JADE SNUFF BOTTLES
 Eggplant jade bottle: 1800-1880
 3 1/4 and 3 3/8in (8.3 and 8.7cm) high

\$2,800 - 3,500

玉質鼻煙壺兩隻
 茄子形鼻煙壺: 1800-1880年

2103



2104
**AN INSCRIBED PEBBLE-FORM JADE SNUFF BOTTLE AND A
 CARVED HARDSTONE SNUFF BOTTLE**
 1840-1920
 1 3/4 and 2 1/8in (4.5 and 5.3cm) high

\$2,000 - 3,000

1840-1920年 卵石形刻詩文鼻煙壺及石料刻人物鼻煙壺各一

2104



2105

2105

TWO MOLDED AND ENAMELED PORCELAIN SNUFF BOTTLES

Jingdezhen kilns, 1796-1850
 2 1/16 and 2 5/8in (5.2 to 6.7cm) high

\$1,500 - 2,500

1796-1850年 模製施釉瓷胎鼻煙壺兩隻



2106

2106

A FAMILLE ROSE ENAMELED PORCELAIN SNUFF BOTTLE

Imperial, Jingdezhen kilns, Daoguang mark and of the period, 1821-1850
 2 3/8in (6cm) high

\$1,800 - 2,500

1821-1850年 清道光 御製粉彩繪獅子狗圖鼻煙壺
 《道光年製》 礬紅篆書款



2107

2107
A FAMILLE ROSE ENAMEL AND SGRAFFITO DECORATED PORCELAIN 'DRAGON' SNUFF BOTTLE

Jingdezhen kiln, 1800-1880
2 1/8in (5.4cm) high

\$1,500 - 2,500

1800-1880年 粉彩瓷胎帶淺刻雲紋五爪龍鼻煙壺



2108

2108
AN ENAMELED PORCELAIN 'KATYDID' SNUFF BOTTLE

Imperial, Jingdezhen kilns, Daoguang mark and of the period, 1821-1850
2 1/8in (5.4cm) high

\$1,500 - 2,500

1821-1850年 清道光 御製粉彩蝈蝈鼻煙壺
《道光年製》 磬紅篆書款



2109

2109
A HARDSTONE 'COIN' SNUFF BOTTLE

Late 19th/20th century
2 1/2in (6.4cm) high

\$1,500 - 2,500

十九世紀末/二十世紀 石料刻西班牙貨幣鼻煙壺

2110

A CARVED CHALCEDONY 'JUJUBE AND PEANUT' SNUFF BOTTLE

1800-1860

2 3/8in (6cm) high

\$1,500 - 2,500

1800-1860年 巧雕瑪瑙'早生貴子'鼻煙壺



2110

2111

TWO CARVED CHALCEDONY SNUFF BOTTLES

1850-1920

2 3/8 and 2 9/16in (6 to 6.6cm) high

\$1,800 - 2,500

1850-1920年 瑪瑙刻人物鼻煙壺兩隻



2111

2112

A WELL-HOLLOWED BLACK AND GRAY JADE 'FIGURAL AND LANDSCAPE' SNUFF BOTTLE

20th century

2 3/4in (7cm) high

\$4,000 - 6,000

二十世紀 灰墨玉刻山水人物鼻煙壺



2112



2113
A GRAYISH-WHITE AND RUSSET JADE SNUFF BOTTLE
Late 19th/20th century
2 3/16in (5.6cm) high

\$1,500 - 2,500

十九世紀末/二十世紀 灰白玉帶褐斑刻螭龍紋鼻煙壺

2113



2114
TWO JADE SNUFF BOTTLES
1850-1930
1 7/8 and 2 1/4in (4.8 and 5.7cm) high

\$1,500 - 2,500

1850-1930年 玉質鼻煙壺兩隻

2114



2115
TWO CARVED CHALCEDONY SNUFF BOTTLES
1830-1900
2 1/2in (6.4cm) height of each

\$1,200 - 1,800

1830-1900年 瑪瑙帶雕飾鼻煙壺兩隻

2115



2116 (two views)

2116

A CARVED 'REALGAR' GLASS SNUFF BOTTLE

Probably Imperial, attributed to the Palace Workshops,
Beijing, 1740-1800

2 1/4in (5.7cm) high

\$2,000 - 3,000

1740-1800年 擬御製 宮廷作坊 北京
仿雄黃玻璃刻螭龍鼻煙壺

Compare a similar 'realgar' glass bottle decorated with a pair of carved chilong on the narrow sides from the Blache B. Exstein Collection, sold at Christie's New York, 21st March 2002, sale 1156, lot 1.

2117

A TRANSPARENT GREEN GLASS SNUFF BOTTLE

1750-1820

2 3/16in (5.3cm) high

\$1,200 - 1,800

1750-1820年 透明綠料刻螭龍鼻煙壺



2117



2118 (two views)

2118
A CARVED 'EAGLE AND BEAR' CHALCEDONY SNUFF BOTTLE
Official school, 1750-1850
2 1/8in (5.4cm) high

\$2,800 - 3,500

1750-1850年 頒賜品
巧雕'英雄圖'瑪瑙鼻煙壺

2119
A GREENISH-WHITE JADE 'MELON AND BUTTERFLY' SNUFF BOTTLE
2 1/8in (5.3cm) high

\$2,200 - 3,000

青白玉'瓜瓞綿綿'鼻煙壺



2119

2120

TWO CHALCEDONY SNUFF BOTTLES

1800-1880

2 3/8 and 2 1/2in (6 and 6.4cm) high

\$1,200 - 1,800

1800-1880年 刻鋪首環瑪瑙鼻煙壺兩隻



2120

2121

THREE QUARTZ SNUFF BOTTLES

Late 19th - 20th century

2 7/16 to 2 5/8in (6.2 to 6.7cm) high

\$1,200 - 1,800

十九世紀末至二十世紀 水晶鼻煙壺三隻



2121

2122

FOUR METAL SNUFF BOTTLES

19th-20th century

2 1/8 to 2 5/16in (5.4 to 5.9cm) high

\$1,500 - 2,500

十九至二十世紀 金屬胎鼻煙壺四隻

For another very similar brass bottle molded with floral designs to the front and reverse, with identical dragon handles and screw-type stopper, dated 19th century, see *The Collector's Book of Snuff bottles*, Bob C. Stevens, 1976, Weatherhill, New York, p. 216, no. 812.



2122



2123
THREE MOLDED AND ENAMELED PORCELAIN SNUFF BOTTLES

Jingdezhen kilns, 1800-1860
 2 5/8 to 3 1/8in (6.7 to 7.9cm) high

\$1,800 - 2,500

1800-1860年 模製粉彩人物鼻煙壺三隻

2123



2124
FOUR UNDERGLAZE BLUE AND IRON-RED OR COPPER-RED DECORATED PORCELAIN SNUFF BOTTLES

Jingdezhen kilns, 1800-1880
 2 1/8 to 3in (5.4 to 7.7cm) high

\$1,800 - 2,500

1800-1880年 青花礬紅或釉里紅鼻煙壺四隻

2124



2125
THREE MOLDED AND ENAMELED PORCELAIN SNUFF BOTTLES

Jingdezhen kilns, 1800-1860
 2 14/ to 3in (5.4 to 7.7cm) high

\$1,500 - 2,500

1800-1860年 模製粉彩瓷胎鼻煙壺三隻

2125



2126 (two views)

2126
A WHITE JADE SNUFF BOTTLE CARVED WITH CRANES AND A PINE TREE

1850-1940
2 3/8in (7cm) high

\$4,000 - 6,000

1850-1940年 白玉'松鶴延年'鼻煙壺

2127
A SPINACH JADE SNUFF BOTTLE WITH INLAID WHITE JADE 'COIN'

20th century
2 1/4in (5.7cm) high

\$1,800 - 2,500

二十世紀 碧玉嵌白玉西班牙貨幣鼻煙壺



2127



2128
FOUR BLUE AND WHITE PORCELAIN SNUFF BOTTLES

Jingdezhen kilns, 1830-1900
 2 3/8 to 3in (6 to 7.1cm) high

\$1,500 - 2,500

1830-1900年 青花鼻煙壺四隻

2128



2129
THREE IRON-RED DECORATED PORCELAIN SNUFF BOTTLES

Jingdezhen kilns, 1820-1900
 2 1/2 to 2 7/8in (6.4 to 7.4cm) high

\$1,200 - 1,800

1820-1900年 礬紅瓷胎鼻煙壺三隻

2129

Lots 2130 to 2149 to be sold without reserve
 拍品2130至2149號為無底價拍品



2130
TWO FAMILLE ROSE ENAMELED PORCELAIN SNUFF BOTTLES

Jingdezhen kilns, 1800-1880
 2 1/16 to 2 1/4in (5.2 to 5.7cm) high

\$1,000 - 1,500

1800-1880年 粉彩繪人物鼻煙壺兩隻

2130



2131



2133



2132



2134

2131
TWO FAMILLE ROSE ENAMELED PORCELAIN 'FIGURAL' SNUFF BOTTLES

Jingdezhen kilns, 1820-1900
 2 3/4 and 3in (7 and 7.6cm) high

\$1,000 - 1,500

1820-1900年 粉彩人物圖鼻煙壺兩隻

2132
THREE ENAMELED PORCELAIN SNUFF BOTTLES

Jingdezhen kilns, 1800-1910
 2 to 2 1/2in (5.1 to 5.7cm) high

\$1,000 - 1,500

1800-1910年 粉彩瓷胎鼻煙壺三隻

2133
THREE OVERLAID GLASS SNUFF BOTTLES

1820-1900
 1 7/8 to 2 3/16in (4.8 to 5.6cm) high

\$1,000 - 1,500

1820-1880年 套料鼻煙壺三隻

2134
THREE INSIDE-PAINTED GLASS SNUFF BOTTLES

20th century
 2 9/16 to 2 3/4in (6.5 to 7cm) high

\$1,000 - 1,500

二十世紀 玻璃內畫鼻煙壺三隻



2135



2137



2136



2138

2135
FOUR JADEITE SNUFF BOTTLES
 20th century
 1 1/2 to 2 5/16in (3.8 to 5.9cm) high

\$1,000 - 1,500

二十世紀 翡翠鼻煙壺四隻

2136
A BLACK OVERLAY WHITE GLASS SNUFF BOTTLE
 1750-1850
 2 1/4in (5.7cm) high

\$1,000 - 1,500

1750-1850年 涅白地套黑色料'福壽雙全'鼻煙壺

2137
THREE BLUE AND WHITE PORCELAIN SNUFF BOTTLES
 Jingdezhen kilns, 1800-1910
 2 1/8 to 2 1/2in (5.4 to 6.4cm) high

\$1,000 - 1,500

1800-1910年 青花鼻煙壺三隻

2138
TWO ROCK CRYSTAL SNUFF BOTTLES
 1750-1850
 1 3/4 and 2 1/16in (4.5 and 5.2cm) high

\$1,000 - 1,500

1750-1850年 水晶鼻煙壺兩隻

2139

TWO YELLOW GLASS SNUFF BOTTLES

Moon flask bottle: 1780-1860

1 5/8 and 2in (4.2 and 5.1cm) high

\$1,000 - 1,500

黃色料胎鼻煙壺兩隻

抱月瓶形鼻煙壺: 1780-1860年



2139

2140

TWO CHALCEDONY SNUFF BOTTLES

1850-1910

1 15/16 and 2in (4.9 and 5.1cm) high

\$1,000 - 1,500

1850-1910年 瑪瑙鼻煙壺兩隻



2140

2141

TWO OVERLAY DECORATED 'FIGURA'L SNUFF BOTTLES

1850-1940

2 1/2 to 2 3/4in (6.4 to 7cm) high

\$1,000 - 1,500

1850-1940年 套料人物鼻煙壺兩隻



2141



2142
THREE CARVED SNUFF BOTTLES
 Late 19th/20th century
 2 1/4 to 2 9/16in (5.7 to 6.6cm) high

\$1,000 - 1,500

十九世紀末至二十世紀 帶雕飾鼻煙壺三隻

2142



2143
TWO CARVED CHALCEDONY SNUFF BOTTLES
 1840-1930
 1 15/16 and 2 5/16in (5 and 5.9cm) high

\$1,000 - 1,500

1840-1930年 '瓜瓞綿綿'及葫蘆形瑪瑙鼻煙壺各一

2143



2144
TWO MONOCHROME GLASS SNUFF BOTTLES
 1800-1910
 2 1/4 and 2 1/2in (5.7 and 6.4cm) high

\$1,000 - 1,500

1800-1910年 單色料胎鼻煙壺兩隻

2144

2145
FOUR PORCELAIN SNUFF BOTTLES
 Jingdezhen kilns, 1840-1920
 Together with two medicine bottles.
 3 to 3 3/8in (7.6 to 8.7cm) height of snuff bottles

\$1,000 - 1,500

1840-1920年 瓷胎鼻煙壺四隻



2145



2146



2147



2148



2149

2146

A JASPER 'DRAGON' SNUFF BOTTLE

1830-1910
2 1/2in (6.4cm) high

\$1,000 - 1,500

1830-1910年 羊肝瑪瑙刻龍紋鼻煙壺

2148

A SHADOW CHALCEDONY 'BAT AND PEACH' SNUFF BOTTLE

1800-1860
2 3/8in (6cm) high

\$1,000 - 1,500

1800-1860年 影子瑪瑙'福壽'鼻煙壺

2147

TWO ENAMELED PORCELAIN 'FIGURAL' SNUFF BOTTLES

Jingdezhen kilns, 1820-1880
2 1/2 and 2 5/8in (6.4 and 6.7cm) high

\$1,000 - 1,500

1820-1880年 粉彩人物鼻煙壺兩隻

2149

A MOSS AGATE SNUFF BOTTLE INCISED WITH A LOTUS POND

Bottle: 1820-1900
2 5/8in (6.7cm) high

\$1,000 - 1,500

青苔瑪瑙刻蓮塘圖鼻煙壺
壺: 1820-1900







2150
**A PEBBLE-FORM GRAYISH-WHITE JADE SNUFF BOTTLE WITH
RUSSET SKIN**
1820-1880
2 5/8in (6.7cm) high

\$1,200 - 1,800

1820-1880年 素光灰白玉帶皮鼻煙壺

2150



2151
A WELL-HOLLOWED SPINACH JADE SNUFF BOTTLE
1820-1860
1 7/8in (4.8cm) high

\$1,200 - 1,800

1820-1860年 素光碧玉鼻煙壺

2151



2152
A CARAMEL OVERLAY GLASS 'COIN' SNUFF BOTTLE
2 1/8in (5.4cm) high

\$1,500 - 2,000

霏雪地套褐色料胎西班牙貨幣鼻煙壺

2152



2153 (two views)

2153
A WHITE AND RUSSET JADE 'MELON AND BUTTERFLY' SNUFF BOTTLE

1820-1920
2 1/4in (5.7cm) high

\$1,500 - 2,000

1820-1920年 白玉帶皮'瓜瓞綿綿'鼻煙壺

2154
A PEBBLE-FORM AMBER SNUFF BOTTLE INCISED WITH FIGURES IN A LANDSCAPE

1820-1920
2 1/4in (5.7cm) high

\$1,200 - 1,800

1820-1920年 琥珀飾淺刻山水人物圖鼻煙壺



2154



2155

2155
A GRAYISH-WHITE JADE SNUFF BOTTLE WITH RUSSET SKIN
1850-1930
2 9/16in (6.5cm) high

\$1,000 - 1,500

1850-1930年 帶皮素光灰白玉鼻煙壺



2156

2156
A SPADE-FORM WHITE JADE 'CLOUD AND BAT' SNUFF BOTTLE
1760-1850
2 1/4in (5.7cm) high

\$1,500 - 2,500

1760-1850年 白玉刻'福從天降'紋鼻煙壺

2157

A FAMILLE ROSE ENAMELED 'FLOWER AND BUTTERFLY' PORCELAIN SNUFF BOTTLE

Jingdezhen kilns, Guangxu mark and of the period, 1875-1908
2 3/8in (6cm) high

\$2,000 - 3,000

1875-1908年 清光緒 粉彩花蝶圖瓷胎鼻煙壺
《光緒年製》 礬紅楷書款



2157

2158

A FAMILLE ROSE ENAMELED PORCELAIN FIGURAL AND LANDSCAPE SNUFF BOTTLE

Jingdezhen kilns, Qianlong mark, 1820-1900
2 5/8in (6.7cm) high

\$1,000 - 1,500

1820-1900年 粉彩山水人物瓷胎鼻煙壺
《大清乾隆年製》 六字篆書款



2158

2159

A WHITE JADE TOGGLE CONVERTED 'MELON AND BUTTERFLY' SNUFF BOTTLE

1 3/4in (4.5cm) high

\$1,200 - 1,500

白玉'瓜迭綿綿'琺瑯改製鼻煙壺

PROPERTY FROM A PRIVATE CARMEL COLLECTION



2159



2160

2160
**A GRAYISH-WHITE JADE SNUFF BOTTLE AND A CARVED
CARNELIAN SNUFF BOTTLE**

Jade snuff bottle: 1780-1880
2 1/2 and 2 1/4in (6.4 and 5.7cm) high

\$1,000 - 1,500

素光灰白玉帶褐斑鼻煙壺及玉髓瑪瑙鼻煙壺各一隻
素光灰白玉帶褐斑鼻煙壺: 1780-1880



2161

PROPERTY FROM VARIOUS OWNERS

2161
A DENTRITIC AGATE SNUFF BOTTLE

1780-1860
2 7/16in (6.3cm) high

\$1,200 - 1,800

1780-1860年 天然旋紋瑪瑙鼻煙壺



2162

2162
**A PALE GREEN OVERLAY DECORATED MOTTELED GLASS
SNUFF BOTTLE**

Probably Imperial, attributed to the Palace Workshops, Beijing, 1750-1850
2 3/8in (6cm) high

\$2,500 - 4,000

1750-1850年 擬御製 宮廷作坊 北京
淺綠套攪料胎'福壽高照'鼻煙壺

2163

A WELL-HOLLOWED GRAYISH-WHITE JADE SNUFF BOTTLE

1 7/8in (4.8cm) high

\$3,000 - 4,000

素光灰白玉鼻煙壺



2163

2164

A SHADOW AGATE 'BUTTERFLY' SNUFF BOTTLE

1800-1880

2in (5.1cm) high

\$3,000 - 5,000

1800-1880年 影子瑪瑙刻雙蝶紋鼻煙壺



2164

2165

A RED GLASS SNUFF BOTTLE FLANKED WITH TWO FAUX LION MASK-AND-RING HANDLES

Probably Imperial, attributed to the Palace Workshops, Beijing, 1750-1820

2 3/8in (6cm) high

\$1,000 - 1,500

1750-1820年 擬御製 宮廷作坊 北京

寶石紅料胎刻鋪首環鼻煙壺



2165



2166

**PROPERTY FROM THE
NORMAN STILLER COLLECTION,
SAN FRANCISCO**

Lots 2166 to 2171 are to be sold without reserve

拍品2166至2171號為無底價拍品

2166

A GROUP OF TWELVE SNUFF BOTTLES

19th-20th century

1 7/8 to 2 1/2in (4.8 to 5.7cm) high

\$1,000 - 1,500

十九至二十世紀 鼻煙壺十二隻

Due to the large number of pieces in this lot, condition reports and photos of individual items will not be available.

鑒於本組物品所含數量，各體細節照片及品像報告將不予以提供



2167

2167

A GROUP OF SIX SNUFF BOTTLES

19th-20th century

2 1/8 to 2 5/8in (6.4 to 6.7cm) high

\$800 - 1,200

十九至二十世紀 施漆及有機材質鼻煙壺六隻

Due to the large number of pieces in this lot, condition reports and photos of individual items will not be available.

鑒於本組物品所含數量，各體細節照片及品像報告將不予以提供



2168

2168

A GROUP OF TWELVE GLASS SNUFF BOTTLES

Late 18th-20th century

2 1/8 to 2 3/4in (5.4 to 7cm) high

\$1,000 - 1,500

十八世紀末至二十世紀 料胎鼻煙壺十二隻

Due to the large number of pieces in this lot, condition reports and photos of individual items will not be available.

鑒於本組物品所含數量，各體細節照片及品像報告將不予以提供

2169

A GROUP OF NINE GLASS SNUFF BOTTLES

18th-19th century

1 3/4 to 2 5/8in (4.5 to 6.7cm) high

\$1,000 - 1,500

十八至十九世紀 料胎鼻煙壺九隻

Due to the large number of pieces in this lot, condition reports and photos of individual items will not be available.

鑒於本組物品所含數量，各體細節照片及品像報告將不予以提供



2169

2170

A GROUP OF THIRTEEN GLASS SNUFF BOTTLES

1 7/8 to 2 3/4in (4.8 to 7cm) high

\$1,000 - 1,500

料胎鼻煙壺十三隻

Due to the large number of pieces in this lot, condition reports and photos of individual items will not be available.

鑒於本組物品所含數量，各體細節照片及品像報告將不予以提供



2170

2171

A GROUP OF THIRTEEN SNUFF BOTTLES

19th-20th century

1 3/4 to 2 1/2in (4.5 to 6.4cm) high

\$800 - 1,200

十九至二十世紀 鼻煙壺十三隻

Due to the large number of pieces in this lot, condition reports and photos of individual items will not be available.

鑒於本組物品所含數量，各體細節照片及品像報告將不予以提供



2171

CHRONOLOGY

NEOLITHIC CULTURES

Cishan-Peiligang	c. 6500-5000 BC
Central Yangshao	c. 5000-3000 BC
Gansu Yangshao	c. 3000-1500 BC
Hemadu	c. 5000-3000 BC
Daxi	c. 5000-3000 BC
Majiabang	c. 5000-3500 BC
Dawenkou	c. 4300-2400 BC
Songze	c. 4000-2500 BC
Hongshan	c. 3800-2700 BC
Liangzhu	c. 3300-2250 BC
Longshan	c. 3000-1700 BC
Qijia	c. 2250-1900 BC

EARLY DYNASTIES

Shang	c. 1500-1050 BC
Western Zhou	1050-771 BC
Eastern Zhou	
Spring & Autumn	770-475 BC
Warring States	475-221 BC

IMPERIAL CHINA

Qin	221-207 BC
Han	
Western Han	206 BC-AD 9
Xin	AD 9-25
Eastern Han	AD 25-220
Three Kingdoms	
Shu (Han)	221-263
Wei	220-265
Wu	222-280
Southern dynasties (Six Dynasties)	
Western Jin	265-316
Eastern Jin	317-420
Liu Song	420-479
Southern Qi	479-502
Liang	502-557
Chen	557-589
Northern dynasties	
Northern Wei	386-535
Eastern Wei	534-550
Western Wei	535-557
Northern Qi	550-577
Northern Zhou	557-581

Sui	589-618
Tang	618-906
Five Dynasties	907-960
Liao	907-1125
Song	
Northern Song	960-1126
Southern Song	1127-1279
Jin	1115-1234
Yuan	1279-1368
Ming	
Hongwu	1368-1398
Jianwen	1399-1402
Yongle	1403-1424
Hongxi	1425
Xuande	1426-1435
Zhengtong	1436-1449
Jingtai	1450-1456
Tianshun	1457-1464
Chenghua	1465-1487
Hongzhi	1488-1505
Zhengde	1506-1521
Jiajing	1522-1566
Longqing	1567-1572
Wanli	1573-1620
Taichang	1620
Tianqi	1621-1627
Chongzhen	1628-1644
Qing	
Shunzhi	1644-1661
Kangxi	1662-1722
Yongzheng	1723-1735
Qianlong	1736-1795
Jiaqing	1796-1820
Daoguang	1821-1850
Xianfeng	1851-1861
Tongzhi	1862-1874
Guangxu	1875-1908
Xuantong	1909-1911

REPUBLICAN CHINA

Republic	1912-1949
People's Republic	1949-

GLOSSARY

TYPICAL HEADINGS USED IN THE CATALOG

The following are examples of the terminology used in the catalog. While every reasonable effort has been made to ensure that the statements made in the catalog are correct, all statements and terms in this catalog are subject to the provisions of the Conditions of Sale and the Galleries and Consignors make no warranties or representations with respect to any lot.

AUTHORSHIP

WANG HUI

The piece is, in our opinion, a work of the artist.

ATTRIBUTED TO WANG HUI

The piece is, in our opinion, from the period of the artist and possibly by his hand.

SCHOOL OF WANG HUI

The piece is, in our opinion, in the style of the artist, possibly of a later period.

AFTER WANG HUI

The piece is, in our opinion, a copy done in the spirit of the artist.

“SIGNED”

The piece has a signature which, in our opinion, is that of the artist.

“BEARING THE SIGNATURE OF” OR “INSCRIBED”

The piece has a signature which, in our opinion, might be spurious or that of a later follower of the artist.

CERAMICS, PORCELAINS AND OTHER WORKS OF ART

FAMILLE VERTE OVOID VASE KANGXI MARK AND PERIOD

When the piece is, in our opinion, a work of that period, reign or dynasty and marked as such, the date and mark appear in bold below the description.

FAMILLE VERTE OVOID VASE KANGXI PERIOD

When the piece is, in our opinion, a work of that period, reign or dynasty, the date appears in bold below the description.

FAMILLE VERTE OVOID VASE KANGXI MARK

When the piece, in our opinion, was manufactured during the 20th century or later, or when its date of manufacture is unclear, but bears a mark, the mark appears alone in bold below the description.

FAMILLE VERTE OVOID VASE

When the piece, in our opinion, was manufactured during the 20th century or later, or when its date of manufacture is unclear, no date appears below its bold description.

INCLUDING

Property from a Private Carmel Collection

Property from the Collection of Sylvia H. Gottlieb, Great Neck, New York

Property from the Estate of a Gentleman

Property from the Norman Stiller Collection, San Francisco

NOTICES TO ALL BUYERS

REGULATED SPECIES MATERIALS AND CITES PERMITS

The export of a lot from the United States or import into certain countries may be subject to export or import regulations, licensure and/or other restrictions; in particular, lots containing plant or animal materials such as ivory, rhinoceros horn, tortoiseshell, coral, whalebone or certain types of woods, irrespective of age or value, may require the granting of one or more export or import licenses or certificates, or may be banned from import altogether by some countries. Moreover, the ability to obtain an export license or certificate does not insure the ability to obtain an import license or certificate in another country. Lots that contain such regulated species materials may also not be eligible for exportation or for re-importation into the United States if they are not at least 100 years of age, and, under current law, lots containing African Elephant Ivory may no longer be re-imported into the United States regardless of age. In addition, resales of lots containing certain regulated species materials may be subject to restrictions in some jurisdictions.

Lots noted in the catalog with a Y next to the lot number contain one or more such regulated plant or animal materials. It is the buyer's responsibility to investigate any such restrictions and to obtain any relevant export or import licenses, which may require independent expert verification of the species and/or age of the regulated material; such reports must be obtained by the purchaser at his or her own expense. Please note that this process is governed by local authorities and may take considerable time. Regardless of any delay in the obtaining of an export or import license or certificate or denial of a license's or certificate's issuance, purchased lots shall be paid for in accordance with the Conditions of Sale, and any such delay or denial shall not serve as the basis for cancellation of any sale. Prospective buyers are advised to obtain information from the relevant regulatory authorities regarding export and import restrictions, requirements, and costs prior to bidding.

Prospective buyers should also check with their local (e.g. state) regulatory authorities regarding any local restrictions and/or permit requirements that may apply with respect to purchases of regulated species materials, including without limitation purchases of items containing elephant ivory or rhino horn. For example, we are advised that New York buyers of any lot containing elephant or mammoth ivory or rhino horn will be responsible for obtaining a New York State permit before taking possession of the lot within New York State, and that the State of New Jersey has banned the import of items containing elephant or marine mammal ivory or rhino horn into that state.

Upon request, Bonhams can refer the purchaser to a third party agent to assist the purchaser in attempting to obtain the appropriate licenses and/or certificates. However, there is no assurance that any necessary licenses or certificates can be obtained. Please contact the Specialist Department for a suggested list of shipping agents prior to placing a bid if you are uncertain as to whether a lot is subject to export/import license or certificate requirements or related restrictions.

PHYSICAL CONDITION OF LOTS IN THIS AUCTION

PLEASE NOTE THAT THERE IS NO REFERENCE IN THIS CATALOG TO THE PHYSICAL CONDITION OF ANY LOT. INTENDING BIDDERS MUST SATISFY THEMSELVES AS TO THE CONDITION OF ANY LOTS AS SPECIFIED IN THE 'LIMITATION OF LIABILITY' IN THE 'CONDITIONS OF SALE.'

As a courtesy to intending bidders, Bonhams will provide a written indication of the physical condition of lots in this sale if a request is received up to 24 hours before the auction starts. Such report is also available for download from Bonhams website.

SNUFF BOTTLE DISCLAIMER

Unless otherwise specified in the cataloguing of a lot, snuff bottle stoppers are not included in any snuff bottle lots or in the estimate or purchase price of such a lot sold hereunder, regardless of whether the snuff bottle lot is illustrated with one or more stoppers. While Bonhams makes reasonable efforts to ensure that a stopper illustrated or exhibited with a snuff bottle lot accompanies the lot upon collection or release, it accepts no liability for not doing so or for damage or loss to stoppers during storage or shipment. In addition, if a snuff bottle lot is exhibited or purchased by a buyer outside the United States, Bonhams may remove any stopper accompanying a lot that contains restricted materials.

**ASIAN DECORATIVE
WORKS OF ART**

Wednesday June 28, 2017
San Francisco

ANONYMOUS (19TH/20TH CENTURY)

Two paintings of Figures
\$6,000 - 8,000

INQUIRIES

+1 415 503 3358
angela.lee@bonhams.com



Bonhams

FINE JEWELRY
INVITATION TO CONSIGN
New York

INQUIRIES
+1 (212) 461 6526 New York
+1 (323) 436 5424 Los Angeles
+1 (415) 503 3306 San Francisco
jewelry.us@bonhams.com



Bonhams

NEW YORK

bonhams.com/jewelry

CONDITIONS OF SALE

The following Conditions of Sale, as amended by any published or posted notices or verbal announcements during the sale, constitute the entire terms and conditions on which property listed in the catalog shall be offered for sale or sold by Bonhams & Butterfields Auctioneers Corp. and any consignor of such property for whom we act as agent. If live online bidding is available for the subject auction, additional terms and conditions of sale relating to online bidding will apply; see www.bonhams.com/WebTerms for the supplemental terms. As used herein, "Bonhams," "we" and "us" refer to Bonhams & Butterfields Auctioneers Corp.

1. As used herein, the term "bid price" means the price at which a lot is successfully knocked down to the purchaser. The term "purchase price" means the aggregate of (a) the bid price, (b) a PREMIUM retained by us and payable by the purchaser EQUAL TO 25% OF THE FIRST \$150,000 OF THE BID PRICE, 20% OF THE AMOUNT OF THE BID PRICE ABOVE \$150,000 UP TO AND INCLUDING \$3,000,000, AND 12% OF THE AMOUNT OF THE BID PRICE OVER \$3,000,000, and (c) unless the purchaser is exempt by law from the payment thereof, any California, Arizona, Colorado, Connecticut, Florida, Georgia, Illinois, Massachusetts, Nevada, New York, Pennsylvania, Texas, Washington, D.C., Washington state, or other state or local sales tax (or compensating use tax) and other applicable taxes.

2. On the fall of the auctioneer's hammer, the highest bidder shall have purchased the offered lot in accordance and subject to compliance with all of the conditions set forth herein and (a) assumes full risk and responsibility therefor, (b) if requested will sign a confirmation of purchase, and (c) will pay the purchase price in full or such part as we may require for all lots purchased. No lot may be transferred. Any person placing a bid as agent on behalf of another (whether or not such person has disclosed that fact or the identity of the principal) may be jointly and severally liable with the principal under any contract resulting from the acceptance of a bid.

Unless otherwise agreed, payment in good funds is due and payable within five (5) business days following the auction sale. Whenever the purchaser pays only a part of the total purchase price for one or more lots purchased, we may apply such payments, in our sole discretion, to the lot or lots we choose. Payment will not be deemed made in full until we have collected good funds for all amounts due.

Payment for purchases may be made in or by (a) cash, (b) cashier's check or money order, (c) personal check with approved credit drawn on a U.S. bank, (d) wire transfer or other immediate bank transfer, or (e) Visa, MasterCard, American Express or Discover credit, charge or debit card. A processing fee will be assessed on any returned checks. Please note that the amount of cash notes and cash equivalents that can be accepted from a given purchaser may be limited.

The purchaser grants us a security interest in the property, and we may retain as collateral security for the purchaser's obligations to us, any property and all monies held or received by us for the account of the purchaser, in our possession. We retain all rights of a secured party under the California Commercial Code. If the foregoing conditions or any other applicable conditions herein are not complied with, in addition to other remedies available to us and the consignor by law, including without limitation, the right to hold the purchaser liable for the purchase price, we at our option may either (a) cancel the sale, retaining as liquidated damages all payments made by the purchaser or (b) resell the property, either publicly or privately, and in such

event the purchaser shall be liable for the payment of any deficiency plus all costs and expenses of both sales, our commission at our standard rates, all other charges due hereunder, attorneys' fees, expenses and incidental damages. In addition, where two or more amounts are owed in respect of different transactions by the purchaser to us, to Bonhams 1793 Limited and/or to any of our other affiliates, subsidiaries or parent companies worldwide within the Bonhams Group, we reserve the right to apply any monies paid in respect of a transaction to discharge any amount owed by the purchaser. If all fees, commissions, premiums, bid price and other sums due to us from the purchaser are not paid promptly as provided in these Conditions of Sale, we reserve the right to impose a finance charge equal to 1.5% per month on all amounts due to us beginning on the 31st day following the sale until payment is received, in addition to other remedies available to us by law.

3. We reserve the right to withdraw any property and to divide and combine lots at any time before such property's auction. Unless otherwise announced by the auctioneer at the time of sale, all bids are per lot as numbered in the catalog and no lots shall be divided or combined for sale.

4. We reserve the right to reject a bid from any bidder, to split any bidding increment, and to advance the bidding in any manner the auctioneer may decide. In the event of any dispute between bidders, or in the event the auctioneer doubts the validity of any bid, the auctioneer shall have sole and final discretion either to determine the successful bidder or to re-offer and resell the article in dispute. If any dispute arises after the sale, our sales records shall be conclusive in all respects.

5. If we are prevented by fire, theft or any other reason whatsoever from delivering any property to the purchaser or a sale otherwise cannot be completed, our liability shall be limited to the sum actually paid therefor by the purchaser and shall in no event include any compensatory, incidental or consequential damages.

6. If a lot is offered subject to a reserve, we may implement such reserve by bidding on behalf of the consignor, whether by opening bidding or continuing bidding in response to other bidders until reaching the reserve. If we have an interest in an offered lot and the proceeds therefrom other than our commissions, we may bid therefor to protect such interest. **CONSIGNORS ARE NOT ALLOWED TO BID ON THEIR OWN ITEMS.**

7. All statements contained in the catalog or in any bill of sale, condition report, invoice or elsewhere as to authorship, period, culture, source, origin, measurement, quality, rarity, **provenance**, importance, exhibition and **literature** of historical relevance, or physical condition **ARE QUALIFIED STATEMENTS OF OPINION AND NOT REPRESENTATIONS OR WARRANTIES.** No employee or agent of Bonhams is authorized to make on our behalf or on that of the consignor any representation or warranty, oral or written, with respect to any property.

8. All purchased property shall be removed from the premises at which the sale is conducted by the date(s) and time(s) set forth in the "Buyer's Guide" portion of this catalog. Property designated with a "W" and associated purchased lots, if not removed promptly following sale, will be transferred to an offsite warehouse at the purchaser's risk and expense, as set forth in more detail in the "Buyer's Guide." Purchased property that is permitted to remain onsite at Bonhams' facility should be removed at the purchaser's expense not later than 5:00 p.m. Pacific Time five (5) business days following the date of the sale. If not so removed, a storage fee of \$5.00 per lot per day will

be payable to us by the purchaser beginning at the close of the 21st day following the sale, and we may thereafter transfer such property to an offsite warehouse at the purchaser's risk and expense. Accounts must be settled in full before property will be released. Packing and handling of purchased lots are the responsibility of the purchaser. Bonhams can provide packing and shipping services for certain items as noted in the "Buyer's Guide" section of the catalog.

9. The copyright in the text of the catalog and the photographs, digital images and illustrations of lots in the catalog belong to Bonhams or its licensors. You will not reproduce or permit anyone else to reproduce such text, photographs, digital images or illustrations without our prior written consent.

10. These Conditions of Sale shall bind the successors and assigns of all bidders and purchasers and inure to the benefit of our successors and assigns. No waiver, amendment or modification of the terms hereof (other than posted notices or oral announcements during the sale) shall bind us unless specifically stated in writing and signed by us. If any part of these Conditions of Sale is for any reason invalid or unenforceable, the rest shall remain valid and enforceable.

11. These Conditions of Sale and the purchaser's and our respective rights and obligations hereunder are governed by the laws of the State of California. By bidding at an auction, each purchaser and bidder agrees to be bound by these Conditions of Sale. Any dispute, controversy or claim arising out of or relating to this agreement, or the breach, termination or validity thereof, brought by or against Bonhams (but not including claims brought against the consignor by the purchaser of lots consigned hereunder) shall be resolved by the procedures set forth below.

MEDIATION AND ARBITRATION PROCEDURES

(a) Within 30 days of written notice that there is a dispute, the parties or their authorized and empowered representatives shall meet by telephone and/or in person to mediate their differences. If the parties agree, a mutually acceptable mediator shall be selected and the parties will equally share such mediator's fees. The mediator shall be a retired judge or an attorney familiar with commercial law and trained in or qualified by experience in handling mediations. Any communications made during the mediation process shall not be admissible in any subsequent arbitration, mediation or judicial proceeding. All proceedings and any resolutions thereof shall be confidential, and the terms governing arbitration set forth in paragraph (c) below shall govern.

(b) If mediation does not resolve all disputes between the parties, or in any event no longer than 60 days after receipt of the written notice of dispute referred to above, the parties shall submit the dispute for binding arbitration before a single neutral arbitrator. Such arbitrator shall be a retired judge or an attorney familiar with commercial law and trained in or qualified by experience in handling arbitrations. Such arbitrator shall make all appropriate disclosures required by law. The arbitrator shall be drawn from a panel of a national arbitration service agreed to by the parties, and shall be selected as follows: (i) If the national arbitration service has specific rules or procedures, those rules or procedures shall be followed; (ii) If the national arbitration service does not have rules or procedures for the selection of an arbitrator, the arbitrator shall be an individual jointly agreed to by the parties. If the parties cannot agree on a national arbitration service, the arbitration shall be conducted by the American Arbitration Association, and the arbitrator

CONDITIONS OF SALE - CONTINUED

shall be selected in accordance with the Rules of the American Arbitration Association. The arbitrator's award shall be in writing and shall set forth findings of fact and legal conclusions.

(c) Unless otherwise agreed to by the parties or provided by the published rules of the national arbitration service:

(i) the arbitration shall occur within 60 days following the selection of the arbitrator;

(ii) the arbitration shall be conducted in the designated location, as follows: (A) in any case in which the subject auction by Bonhams took place or was scheduled to take place in the State of New York or Connecticut or the Commonwealth of Massachusetts, the arbitration shall take place in New York City, New York; (B) in all other cases, the arbitration shall take place in the city of San Francisco, California; and

(iii) discovery and the procedure for the arbitration shall be as follows:

(A) All arbitration proceedings shall be confidential;

(B) The parties shall submit written briefs to the arbitrator no later than 15 days before the arbitration commences;

(C) Discovery, if any, shall be limited as follows: (I) Requests for no more than 10 categories of documents, to be provided to the requesting party within 14 days of written request therefor; (II) No more than two (2) depositions per party, provided however, the deposition(s) are to be completed within one (1) day; (III) Compliance with the above shall be enforced by the arbitrator in accordance with California law;

(D) Each party shall have no longer than eight (8) hours to present its position. The entire hearing before the arbitrator shall not take longer than three (3) consecutive days;

(E) The award shall be made in writing no more than 30 days following the end of the proceeding. Judgment upon the award rendered by the arbitrator may be entered by any court having jurisdiction thereof.

To the fullest extent permitted by law, and except as required by applicable arbitration rules, each party shall bear its own attorneys' fees and costs in connection with the proceedings and shall share equally the fees and expenses of the arbitrator.

LIMITED RIGHT OF RESCISSION

If within one (1) year from the date of sale, the original purchaser (a) gives written notice to us alleging that the identification of Authorship (as defined below) of such lot as set forth in the **BOLD TYPE** heading of the catalog description of such lot (as amended by any salerom notices or verbal announcements during the sale) is not substantially correct based on a fair reading of the catalog (including the terms of any glossary contained therein), and (b) within 10 days after such notice returns the lot to us in the same condition as at the time of sale, and (c) establishes the allegation in the notice to our satisfaction (including by providing one or more written opinions by recognized experts in the field, as we may reasonably require), then the sale of such lot will be rescinded and, unless we have already paid to the consignor monies owed him in connection with the sale, the original purchase price will be refunded.

If, prior to receiving such notice from the original purchaser alleging such defect, we have paid the consignor monies owed him in connection with the sale, we shall pay the original purchaser the amount of our commissions, any other sale proceeds to which we are entitled and applicable taxes received from the purchaser on the sale and make demand on the consignor to pay the balance of the original purchase price to the original purchaser. Should the consignor fail to pay such amount promptly, we may disclose the identity of the consignor and assign to the original purchaser our rights against the consignor with respect to the lot the sale of which is sought to be rescinded. Upon such disclosure and assignment, any liability of Bonhams as consignor's agent with respect to said lot shall automatically terminate.

The foregoing limited right of rescission is available to the original purchaser only and may not be assigned to or relied upon by any subsequent transferee of the property sold. The purchaser hereby accepts the benefit of the consignor's warranty of title and other representations and warranties made by the consignor for the purchaser's benefit. Nothing in this section shall be construed as an admission by us of any representation of fact, express or implied, obligation or responsibility with respect to any lot. **THE PURCHASER'S SOLE AND EXCLUSIVE**

REMEDY AGAINST BONHAMS FOR ANY REASON WHATSOEVER IS THE LIMITED RIGHT OF RESCISSION DESCRIBED IN THIS SECTION.

"Authorship" means only the identity of the creator, the period, culture and source or origin of the lot, as the case may be, as set forth in the **BOLD TYPE** heading of the print catalog entry. The right of rescission does not extend to: (a) works of art executed before 1870 (unless these works are determined to be counterfeits created since 1870), as this is a matter of current scholarly opinion which can change; (b) titles, descriptions, or other identification of offered lots, which information normally appears in lower case type below the **BOLD TYPE** heading identifying the Authorship; (c) Authorship of any lot where it was specifically mentioned that there exists a conflict of specialist or scholarly opinion regarding the Authorship of the lot at the time of sale; (d) Authorship of any lot which as of the date of sale was in accordance with the then generally-accepted opinion of scholars and specialists regarding the same; or (e) the identification of periods or dates of creation in catalog descriptions which may be proven inaccurate by means of scientific processes that are not generally accepted for use until after publication of the catalog in which the property is offered or that were unreasonably expensive or impractical to use at the time of such publication.

LIMITATION OF LIABILITY

EXCEPT AS EXPRESSLY PROVIDED ABOVE, ALL PROPERTY IS SOLD "AS IS." NEITHER BONHAMS NOR THE CONSIGNOR MAKES ANY REPRESENTATION OR WARRANTY, EXPRESS OR IMPLIED, AS TO THE MERCHANTABILITY, FITNESS OR CONDITION OF THE PROPERTY OR AS TO THE CORRECTNESS OF DESCRIPTION, GENUINENESS, ATTRIBUTION, **PROVENANCE** OR PERIOD OF THE PROPERTY OR AS TO WHETHER THE PURCHASER ACQUIRES ANY COPYRIGHTS OR OTHER INTELLECTUAL PROPERTY RIGHTS IN LOTS SOLD OR AS TO WHETHER A WORK OF ART IS SUBJECT TO THE ARTIST'S MORAL RIGHTS OR OTHER RESIDUAL RIGHTS OF THE ARTIST. THE PURCHASER EXPRESSLY ACKNOWLEDGES AND AGREES THAT IN NO EVENT SHALL BONHAMS BE LIABLE FOR ANY DAMAGES INCLUDING, WITHOUT LIMITATION, ANY COMPENSATORY, INCIDENTAL OR CONSEQUENTIAL DAMAGES.

SELLER'S GUIDE

SELLING AT AUCTION

Bonhams can help you every step of the way when you are ready to sell art, antiques and collectible items at auction. Our regional offices and representatives throughout the US are available to service all of your needs. Should you have any further questions, please visit our website at www.bonhams.com/us for more information or call our Client Services Department at +1 (800) 223 2854 ext. 23550.

AUCTION ESTIMATES

The first step in the auction process is to determine the auction value of your property. Bonhams' world-renowned specialists will evaluate your special items at no charge and in complete confidence. You can obtain an auction estimate in many ways:

- Attend one of our Auction Appraisal Events held regularly at our galleries and in other major metropolitan areas. The updated schedule for Bonhams Auction Appraisal Events is available at www.bonhams.com/us.
- Call our Client Services Department to schedule a private appointment at one of our galleries. If you have a large collection, our specialists can travel, by appointment, to evaluate your property on site.
- Send clear photographs to us of each individual item, including item dimensions and other pertinent information with each picture. Photos should be sent to Bonhams' address in envelopes marked

as "photo auction estimate". Alternatively, you can submit your request using our online form at www.bonhams.com/us. Digital images may be attached to the form. Please limit your images to no more than five (5) per item.

CONSIGNING YOUR PROPERTY

After you receive an estimate, you may consign your property to us for sale in the next appropriate auction. Our staff assists you throughout the process, arranging transportation of your items to our galleries (at the consignor's expense), providing a detailed inventory of your consignment, and reporting the prices realized for each lot. We provide secure storage for your property in our warehouses and all items are insured throughout the auction process. You will receive payment for your property approximately 35 days after completion of sale.

Sales commissions vary with the potential auction value of the property and the particular auction in which the property is offered. Please call us for commission rates.

PROFESSIONAL APPRAISAL SERVICES

Bonhams' specialists conduct insurance and fair market value appraisals for private collectors, corporations, museums, fiduciaries and government entities on a daily basis. Insurance appraisals, used for insurance purposes, reflect the cost of replacing property in today's retail market. Fair market value appraisals are used for estate,

tax and family division purposes and reflect prices paid by a willing buyer to a willing seller.

When we conduct a private appraisal, our specialists will prepare a thorough inventory listing of all your appraised property by category. Valuations, complete descriptions and locations of items are included in the documentation.

Appraisal fees vary according to the nature of the collection, the amount of work involved, the travel distance, and whether the property is subsequently consigned for auction.

Our appraisers are available to help you anywhere and at any time. Please call our Client Services Department to schedule an appraisal.

ESTATE SERVICES

Since 1865, Bonhams has been serving the needs of fiduciaries – lawyers, trust officers, accountants and executors – in the disposition of large and small estates. Our services are specially designed to aid in the efficient appraisal and disposition of fine art, antiques, jewelry, and collectibles. We offer a full range of estate services, ranging from flexible financial terms to tailored accounting for heirs and their agents to world-class marketing and sales support.

For more information or to obtain a detailed Trust and Estates package, please visit our website at www.bonhams.com/us or contact our Client Services Department.

BUYER'S GUIDE

BIDDING & BUYING AT AUCTION

Whether you are an experienced bidder or an enthusiastic novice, auctions provide a stimulating atmosphere unlike any other. Bonhams previews and sales are free and open to the public. As you will find in these directions, bidding and buying at auction is easy and exciting. Should you have any further questions, please visit our website at www.bonhams.com or call our Client Services Department at +1 (800) 223 2854 ext. 23550.

Catalogs

Before each auction we publish illustrated catalogs that include dates and times for previews and auctions. Our catalogs also provide descriptions and estimated values for each "lot." A lot may refer to a single item or to a group of items auctioned together. We offer our catalogs by subscription or by single copy. For information on subscribing to our catalogs, you may refer to the subscription form in this catalog, call our Client Services Department, or visit our website at www.bonhams.com/us.

Previews

Auction previews are your chance to inspect each lot prior to the auction. We encourage you to look closely and examine each object on which you may want to bid so that you will know as much as possible about it. Items are sold "as is" and with all faults; illustrations in our catalogs, website and other materials are provided for identification only. At the previews, our staff is always available to answer your questions and guide you through the auction process. Condition reports may be available upon request.

Estimates

Bonhams catalogs include estimates for each lot, exclusive of buyer's premium and tax. The estimates are provided as an approximate guide to current market value and should not be interpreted as a representation or prediction of actual selling prices. They are determined well in advance of a sale and are subject to revision. Please contact us should you have any questions about value estimates.

Reserves

All lots in a catalog are subject to a reserve unless otherwise indicated. The reserve is the minimum price that the seller is willing to accept for a lot. This amount is confidential and does not exceed the low estimated value.

BIDDING AT AUCTION

At Bonhams, you can bid in many ways: in person, via absentee bid, over the phone, or via Bonhams' online bidding facility. Absentee bids can be submitted in person, online, via fax or via email.

A valid Bonhams client account is required to participate in bidding activity. You can obtain registration information online, at the reception desk or by calling our Client Services Department.

By bidding at auction, whether in person or by agent, by absentee bid, telephone, online or other means, the buyer or bidder agrees to be bound by the Conditions of Sale.

Lots are auctioned in consecutive numerical order as they appear in the catalog. Bidding normally begins below the low estimate. The auctioneer will accept bids from interested parties present in the saleroom, from telephone bidders, and from absentee bidders who have left written bids in advance of the sale. The auctioneer may also execute bids on behalf of the consignor up to the amount of the reserve, but never above it.

We assume no responsibility for failure to execute bids for any reason whatsoever.

In Person

If you are planning to bid at auction, you will need to register at the reception desk in order to receive a numbered bid card. To place a bid, hold up your card so that the auctioneer can clearly see it. Decide on the maximum amount that you wish to pay, exclusive of buyer's premium and tax, and continue bidding until your bid prevails or you reach your limit. If you are the successful bidder on a lot, the auctioneer will acknowledge your paddle number and bid amount.

Absentee Bids

As a service to those wishing to place bids, we may at our discretion accept bids without charge in advance of sale by telephone, by facsimile or in writing on bidding forms available from us. "Buy" bids will not be accepted; all bids must state the highest bid price the bidder is willing to pay. Our auction staff

will try to bid just as you would, with the goal of obtaining the item at the lowest bid price possible. In the event identical bids are submitted, the earliest bid submitted will take precedence. Absentee bids shall be executed in competition with other absentee bids, any applicable reserve, and bids from other auction participants. A friend or agent may place bids on your behalf, provided that we have received your written authorization prior to the sale. Absentee bid forms are available in our catalogs, online at www.bonhams.com/us, and at our San Francisco, Los Angeles and New York galleries.

By Telephone

Under special circumstances, we can arrange for you to bid by telephone. To arrange for a telephone bid, please contact our Client Services Department a minimum of 24 hours prior to the sale.

Online

Web users may place absentee bids online from anywhere in the world. To bid online, please visit our website at www.bonhams.com/us.

We are pleased to make our live online bidding facility available to bidders in this sale.

Additional terms and conditions of sale relating to online bidding will apply. Please see www.bonhams.com/24434 or contact the Client Services Department to obtain information and learn how you can register and bid online in this sale.

Bid Increments

Bonhams generally uses the following increment multiples as bidding progresses:

\$50-200	by \$10s
\$200-500	by \$20/50/80s
\$500-1,000	by \$50s
\$1,000-2,000	by \$100s
\$2,000-5,000	by \$200/500/800s
\$5,000-10,000	by \$500s
\$10,000-20,000	by \$1,000s
\$20,000-50,000	by \$2,000/5,000/8,000s
\$50,000-100,000	by \$5,000s
\$100,000-200,000	by \$10,000s
above \$200,000	at auctioneer's discretion

The auctioneer may split or reject any bid at any time at his or her discretion as outlined in the Conditions of Sale.

Currency Converter

Solely for the convenience of bidders, a currency converter may be provided at Bonhams sales. The rates quoted for conversion of other currencies to U.S. Dollars are indications only and should not be relied upon by a bidder, and neither Bonhams nor its agents shall be responsible for any errors or omissions in the operation or accuracy of the currency converter.

Buyer's Premium

A buyer's premium is added to the winning bid price of each individual lot purchased, at the rates set forth in the Conditions of Sale. The winning bid price plus the premium constitute the purchase price for the lot. Applicable sales taxes are computed based on this figure, and the total becomes your final purchase price.

Unless specifically illustrated and noted, fine art frames are not included in the estimate or purchase price. Bonhams accepts no liability for damage or loss to frames during storage or shipment.

All sales are final and subject to the Conditions of Sale found in our catalogs, on our website, and available at the reception desk.

Payment

All buyers are asked to pay and pick up by 3pm on the business day following the auction. Payment may be made to Bonhams by cash, checks drawn on a U.S. bank, money order, wire transfer, or by Visa, MasterCard, American Express or Discover credit or charge card or debit card. All items must be paid for within 5 business days of the sale. Please note that payment by personal or business check may result in property not being released until purchase funds clear our bank.

Sales Tax

California, Arizona, Colorado, Connecticut, Florida, Georgia, Illinois, Nevada, New York, Massachusetts, Pennsylvania, Texas, Washington DC and Washington state residents must pay applicable sales tax. Other state or local taxes (or compensating use taxes) may apply. Sales tax will be

automatically added to the invoice unless a valid resale number has been furnished or the property is shipped via common carrier to destinations outside the states listed above. If you wish to use your resale license please contact Cashiers for our form.

Shipping & Removal

Buyers are to review the Offsite Sold Property Storage page for a list of lots that will be removed to the offsite warehouse of Box Brothers. These designated lots must be retrieved by the buyer prior to the day and time designated on the Offsite Sold Property Storage page. If buyers of these designated lots also buy other lots, such as decorations, rugs or works of art, these lots may also be removed to the warehouse of Box Brothers, so all lots remain together and customers can collect or ship from one location. All other items will remain at Bonhams for a period of 21 days, after which time they may be transferred to offsite storage. [Wine, Jewelry, Natural History, Collectibles, 20th Century Decorative Arts, Rugs, Native American Art, Tribal Art and most Arms & Armor auctions are not included in this policy.](#)

Box Brothers San Leandro (for San Francisco auctions only)
1471 Doolittle Drive, San Leandro, CA 94577
Tel (800) 942 6822; Fax (510) 628 8454

Box Brothers Los Angeles (for Los Angeles auctions only)
220 W. Ivy Ave, Unit C, Inglewood, Ca 90302
+1 (310) 419 9915 or +1 (800) 474 7447

Box Brothers is open Monday-Friday 8am-5pm with Saturday and Sunday hours available. Buyers must contact Box Brothers 24 hours in advance of pickup. Appointments are required.

Bonhams can accommodate shipping for certain items. Please contact our Cashiers Department for more information or to obtain a quote. Refer to Conditions of Sale for special terms governing the shipment of Arms and Wine. Shipments are made during weekday business hours up to four weeks after payment is received. Carriers are not permitted to deliver to P.O. Boxes.

International buyers are responsible for all import/export customs duties and taxes. An invoice stating the actual purchase price(s) will accompany all international purchases.

Simultaneous sale property collection notice:

If this sale previews in multiple cities, please see the title page for details regarding final location of property for collection.

Handling and Storage Charges

Please note: For sold lots removed to Box Brothers, there will be no post-sale storage charge for lots collected within 5 days from the sale date. For lots that remain at Bonhams, there will be no post-sale storage charge for lots collected within 21 days of the sale date. Handling fees may apply.

Lots uncollected at Bonhams after 21 days may be removed to the warehouse of Box Brothers. Handling and storage fees will apply.

Insurance: All sold lots are insured by Box Brothers at the sum of the hammer price plus buyer's premium.

Please refer to Box Brothers for a list of Handling, Storage and Insurance fees.

Payment

Payments for purchased lots must be made directly to Bonhams. Box Brothers will not release property to a buyer unless the buyer has paid Bonhams first. All charges for handling and storage due to Box Brothers must be paid by the time of collection from their warehouse. Please telephone Box Brothers at +1 (800) 474 7447 in advance to ascertain the amount due. **Lots will only be released from Box Brothers' warehouse with a "Release Order" obtained from the cashier's office at Bonhams.**

The removal/storage and/or shipment by Box Brothers of any lots will be subject to their standard Conditions of Business, copies of which are available at Bonhams or from Box Brothers directly.

Auction Results

To find out the final purchase price for any lot following the sale, please call our automated auction results line at +1 (800) 223 2854 ext. 3400. Auction results are usually available on the next business day following the sale or online at www.bonhams.com/us.

CONTACTS

OFFICERS

Malcolm Barber
Co-Chairman

Matthew Girling
Chief Executive Officer

Laura King Pfaff •
Chairman Emeritus

Leslie Wright
Vice President, Trusts and Estates

Jon King
Vice President, Business Development

Vice Presidents, Specialists
Susan F. Abeles
Rupert Banner
Kayla Carlsen
Judith Eurich
Mark Fisher
Dessa Goddard
Jakob Greisen
Bruce McLaren
Scott Levitt
Mark Osborne
Brooke Sivo
Catherine Williamson

REPRESENTATIVES

Arizona
Terri Adrian-Hardy, (602) 684 5747

California
David Daniel
(916) 364 1645, Central Valley

California
Brooke Sivo
(760) 350 4255, Palm Springs
(323) 436 5420, San Diego

Colorado
Julie Segraves, (720) 355 3737 •

Florida
Jon King
(561) 651 7876, Palm Beach
(305) 228 6600, Miami
(954) 566 1630, Ft. Lauderdale

Georgia
Mary Moore Bethea, (404) 842 1500 •

Illinois
Ricki Harris
(773) 267 3300, (773) 680 2881

Massachusetts/New England
Amy Corcoran, (617) 742 0909

Nevada
David Daniel, (775) 831 0330

New Jersey
Alan Fausel, (973) 997 9954 •

New Mexico
Michael Bartlett, (505) 820 0701

Oregon and Idaho
Sheryl Acheson, (503) 312 6023

Pennsylvania
Alan Fausel, (610) 644 1199 •

Texas, Oklahoma and Louisiana
Amy Lawch, (713) 621 5988 •

Virginia and Washington DC
Gertraud Hechl, (540) 454 2437 •

Washington
Heather O'Mahony, (206) 218 5011

Canada, Toronto, Ontario
Jack Kerr-Wilson, (416) 462 9004 •

Montreal, Quebec
David Kelsey, (514) 894 1138 •

**BONHAMS *
NEW YORK DEPARTMENTS**
580 Madison Avenue
New York, New York 10022
(212) 644 9001

Books & Manuscripts
Darren Sutherland, (212) 461 6531

Chinese Works of Art & Paintings
Bruce MacLaren, (917) 206 1677
Nicolas Rice, (917) 206 1622

Collectors' Motorcars & Motorcycles
Rupert Banner, (212) 461 6515
Eric Minoff, (917) 206 1630
Evan Ide, (917) 340 4657
Michael Caimano, (917) 206 1615

**Fine Art
American**
Kayla Carlsen, (917) 206 1699

Contemporary
Jeremy Goldsmith, (917) 206 1656
Megan Murphy, (212) 644 9020

European Paintings
Madalina Lazen, (212) 644 9108

Impressionist & Modern
William O'Reilly, (212) 644 9135

Himalayan Art
Mark Rasmussen, (917) 206 1688

Japanese Works of Art
Jeff Olson, (212) 461 6516

Jewelry
Susan F. Abeles, (212) 461 6525
Caroline Morrissey, (212) 644 9046
Camille Barbier, (212) 644 9035

Maritime Paintings & Works of Art
Gregg Dietrich, (212) 644 9001 •

Modern Decorative Arts & Design
Benjamin Walker, (212) 710 1306

Photographs & Prints
Shawna Brickley, (917) 206 1690
Laura Patterson, (917) 206 1653

Russian Fine & Decorative Arts
Yelena Harbick, (212) 644 9136

Trusts & Estates
Sherri Cohen, (917) 206 1671

Watches & Clocks
Jonathan Snellenburg, (212) 461 6530
Jonathan Hochman, (917) 206 1618

CLIENT SERVICES DEPARTMENT

San Francisco
(415) 861 7500
(415) 861 8951 fax
Monday - Friday, 9am to 5pm

Los Angeles
(323) 850 7500
(323) 850 6090 fax
Monday - Friday, 9am to 5pm

**BONHAMS *
SAN FRANCISCO DEPARTMENTS**
220 San Bruno Avenue
San Francisco California 94103
(415) 861 7500

20th Century Fine Art
Dane Jensen, (323) 436 5451

Arms & Armor
Paul Carella, (415) 503 3360

Asian Works of Art
Dessa Goddard, (415) 503 3333

Books & Manuscripts
Adam Stackhouse, (415) 503 3266

Chinese Works of Art
Daniel Herske, (415) 503 3271

Jewelry & Watches
Shannon Beck, (415) 503 3306

Collectors' Motorcars & Motorcycles
Mark Osborne, (415) 503 3353
Jakob Greisen, (415) 503 3284

Museum Services
Laura King Pfaff, (415) 503 3210

Native American Art
Ingmars Lindbergs, (415) 503 3393

**California & Western
Paintings & Sculpture**
Aaron Bastian, (415) 503 3241

Photographs & Prints
Judith Eurich, (415) 503 3259

Space History
Adam Stackhouse, (415) 503 3266

Trusts & Estates
Victoria Richardson, (415) 503 3207
Celeste Smith, (415) 503 3214

Wine
Erin McGrath, (415) 503 3319

Writing Instruments
Ivan Briggs, (415) 503 3255

**BONHAMS *
LOS ANGELES DEPARTMENTS**
7601 W. Sunset Boulevard
Los Angeles California 90046
(323) 850 7500

20th Century Decorative Arts
Angela Past, (323) 436 5422

20th Century Fine Art
Alexis Chompaisal, (323) 436 5469

African, Oceanic & Pre-Columbian Art
Fredric W. Backlar, (323) 436 5416 •

Books & Manuscripts
Catherine Williamson, (323) 436 5442

Coins & Banknotes
Paul Song, (323) 436 5455

Contemporary Art
Dane Jensen, (323) 436 5451

Entertainment Memorabilia
Catherine Williamson, (323) 436 5442
Dana Hawkes, (978) 283 1518

Furniture & Decorative Arts
Andrew Jones, (323) 436 5432
Jennifer Kurtz, (323) 436 5478

Jewelry & Watches
Dana Ehrman, (323) 436 5407
Claire De Biasio-Paris, (323) 436 5483

Collectors' Motorcars & Motorcycles
Nick Smith, (323) 436 5470

Photographs & Prints
Morisa Rosenberg, (323) 436 5435

Natural History
Thomas E. Lindgren, (310) 469 8567 •
Claudia Florian, G.J.G., (323) 436 5437 •

**California & Western
Paintings & Sculpture**
Scott Levitt, (323) 436 5425

Paintings - European
Mark Fisher, (323) 436 5488

Silver
Aileen Ward, (323) 436 5463

Trusts & Estates
Leslie Wright, (323) 436 5408
Joseph Francaviglia, (323) 436 5443

* Indicates saleroom

• Indicates independent contractor

The following information is recorded and available 24 hours a day, 7 days a week, through our telephone system:

- Auction and Preview Information
- Directions to Bonhams's salesrooms
- Automated Auction Results

Bonhams Specialist Departments

To e-mail any of the below use the first name dot second name @bonhams.com eg. charles.obrien@bonhams.com

19th Century Paintings

UK
Charles O' Brien
+44 20 7468 8360
U.S.A
Madalina Lazen
+1 212 644 9108

20th Century British Art

Matthew Bradbury
+44 20 7468 8295

Aboriginal Art

Francesca Cavazzini
+61 2 8412 2222

African, Oceanic & Pre-Columbian Art

U.S.A
Fredric Backlar
+1 323 436 5416

American Paintings

Kayla Carlsen
+1 917 206 1699

Antiquities

Francesca Hickin
+44 20 7468 8226

Antique Arms & Armour

UK
David Williams
+44 20 7393 3807
U.S.A
Paul Carella
+1 415 503 3360

Art Collections, Estates & Valuations

Harvey Cammell
+44 (0) 20 7468 8340

Art Nouveau & Decorative Art & Design

UK
Mark Oliver
+44 20 7393 3856
U.S.A
Frank Maraschiello
+1 212 644 9059

Australian Art

Merryn Schriever
+61 2 8412 2222
Alex Clark
+61 3 8640 4088

Australian Colonial Furniture and Australiana

+61 2 8412 2222

Books, Maps & Manuscripts

UK
Matthew Haley
+44 20 7393 3817
U.S.A
Catherine Williamson
+1 323 436 5442

British & European Glass

UK
John Sandon
+44 20 7468 8244
U.S.A.
Suzy Pai
+1 415 503 3343

British Ceramics

UK
John Sandon
+44 20 7468 8244

California & American Paintings

Scot Levitt
+1 323 436 5425

Carpets

UK
carpets@bonhams.com
U.S.A.
Hadji Rahimpour
+1 415 503 3392

Chinese & Asian Art

UK
Asaph Hyman
+44 20 7468 5888
U.S.A
Dessa Goddard
+1 415 503 3333
HONG KONG
+852 3607 0010
AUSTRALIA
Yvett Klein
+61 2 8412 2222

Clocks

UK
James Stratton
+44 20 7468 8364
U.S.A
Jonathan Snellenburg
+1 212 461 6530

Coins & Medals

UK
John Millensted
+44 20 7393 3914
U.S.A
Paul Song
+1 323 436 5455

Contemporary Art

UK
Ralph Taylor
+44 20 7447 7403
U.S.A
Jeremy Goldsmith
+1 917 206 1656

Entertainment Memorabilia

UK
Katherine Schofield
+44 20 7393 3871
U.S.A
Catherine Williamson
+1 323 436 5442

European Ceramics

UK
Sebastian Kuhn
+44 20 7468 8384
U.S.A
Peter Scott
+1 415 503 3326

Furniture

UK
Thomas Moore
+44 20 8963 2816
U.S.A
Andrew Jones
+1 415 503 3413

European Sculptures & Works of Art

UK
Michael Lake
+44 20 8963 6813

Greek Art

Olympia Pappa
+44 20 7468 8314

Golf Sporting Memorabilia

Kevin Mcgimpsey
+44 131 240 2296

Irish Art

Penny Day
+44 20 7468 8366

Impressionist & Modern Art

UK
India Phillips
+44 20 7468 8328
U.S.A
William O'Reilly
+1 212 644 9135

Indian, Himalayan & Southeast Asian Art

H.K.
Edward Wilkinson
+85 22 918 4321
U.S.A
Mark Rasmussen
+1 917 206 1688

Islamic & Indian Art

Oliver White
+44 20 7468 8303

Japanese Art

UK
Suzannah Yip
+44 20 7468 8368
U.S.A
Jeff Olson
+1 212 461 6516

Jewellery

UK
Jean Ghika
+44 20 7468 8282
U.S.A
Susan Abeles
+1 212 461 6525
HONG KONG
Graeme Thompson
+852 3607 0006

Marine Art

UK
Veronique Scorer
+44 20 7393 3962
U.S.A
Gregg Dietrich
+1 917 206 1697

Mechanical Music

Jon Baddeley
+44 20 7393 3872

Modern, Contemporary & Latin American Art

U.S.A
Alexis Chompaisal
+1 323 436 5469

Modern & Contemporary Middle Eastern Art

Nima Sagharchi
+44 20 7468 8342

Modern & Contemporary South Asian Art

Tahmina Ghaffar
+44 207 468 8382

Modern Design

Gareth Williams
+44 20 7468 5879

Motor Cars

UK
Tim Schofield
+44 20 7468 5804
U.S.A
Mark Osborne
+1 415 503 3353
EUROPE
Philip Kantor
+32 476 879 471

Automobilia

UK
Toby Wilson
+44 8700 273 619
Adrian Papiros
+44 8700 273621

Motorcycles

Ben Walker
+44 8700 273616

Native American Art

Ingmars Lindbergs
+1 415 503 3393

Natural History

U.S.A
Claudia Florian
+1 323 436 5437

Old Master Pictures

UK
Andrew McKenzie
+44 20 7468 8261
U.S.A
Mark Fisher
+1 323 436 5488

Orientalist Art

Charles O'Brien
+44 20 7468 8360

Photography

U.S.A
Judith Eurich
+1 415 503 3259

Prints and Multiples

UK
Lucia Tro Santafe
+44 20 7468 8262
U.S.A
Judith Eurich
+1 415 503 3259

Russian Art

UK
Daria Chernenko
+44 20 7468 8334
U.S.A
Yelena Harbick
+1 212 644 9136

Scientific Instruments

Jon Baddeley
+44 20 7393 3872
U.S.A.
Jonathan Snellenburg
+1 212 461 6530

Scottish Pictures

Chris Brickley
+44 131 240 2297

Silver & Gold Boxes

UK
Ellis Finch
+44 20 7393 3973
U.S.A
Aileen Ward
+1 323 436 5463

South African Art

Giles Peppiatt
+44 20 7468 8355

Sporting Guns

Patrick Hawes
+44 20 7393 3815

Travel Pictures

Veronique Scorer
+44 20 7393 3962

Urban Art

Gareth Williams
+44 20 7468 5879

Watches & Wristwatches

UK
Jonathan Darracott
+44 20 7447 7412
U.S.A.
Jonathan Snellenburg
+1 212 461 6530

Whisky

UK
Martin Green
+44 1292 520000
U.S.A
Erin McGrath
+1 415 503 3363
HONG KONG
Daniel Lam
+852 3607 0004

Wine

UK
Richard Harvey
+44 (0) 20 7468 5811
U.S.A
Kate Wollman
+1 415 503 3221
Erin McGrath
+1 415 503 3363
HONG KONG
Daniel Lam
+852 3607 0004

UNITED KINGDOM

London
101 New Bond Street ●
London W1S 1SR
+44 20 7447 7447
+44 20 7447 7400 fax

Montpelier Street ●
London SW7 1HH
+44 20 7393 3900
+44 20 7393 3905 fax

South East England

Guildford
Millmead,
Guildford,
Surrey GU2 4BE
+44 1483 504 030
+44 1483 450 205 fax

Isle of Wight
+44 1273 220 000

Representative:
Brighton & Hove
Tim Squire-Sanders
+44 1273 220 000

West Sussex
+44 (0) 1273 220 000

South West England

Bath
Queen Square House
Charlotte Street
Bath BA1 2LL
+44 1225 788 988
+44 1225 446 675 fax

Cornwall – Truro
36 Lemon Street
Truro
Cornwall
TR1 2NR
+44 1872 250 170
+44 1872 250 179 fax

Exeter
The Lodge
Southernhay West Exeter,
Devon
EX1 1JG
+44 1392 425 264
+44 1392 494 561 fax

Tetbury
Eight Bells House
14 Church Street
Tetbury
Gloucestershire
GL8 8JG
+44 1666 502 200
+44 1666 505 107 fax

Representatives:
Dorset
Bill Allan
+44 1935 815 271

East Anglia and Bury St. Edmunds
Michael Steel
+44 1284 716 190

Norfolk
The Market Place
Reepham
Norfolk NR10 4JJ
+44 1603 871 443
+44 1603 872 973 fax

Midlands

Knowle
The Old House
Station Road
Knowle, Solihull
West Midlands
B93 0HT
+44 1564 776 151
+44 1564 778 069 fax

Oxford
Banbury Road
Shipton on Cherwell
Kidlington OX5 1JH
+44 1865 853 640
+44 1865 372 722 fax

Yorkshire & North East England

Leeds
30 Park Square West
Leeds LS1 2PF
+44 113 234 5755
+44 113 244 3910 fax

North West England

Chester
2 St Johns Court,
Vicars Lane,
Chester,
CH1 1QE
+44 1244 313 936
+44 1244 340 028 fax

Manchester
The Stables
213 Ashley Road
Hale WA15 9TB
+44 161 927 3822
+44 161 927 3824 fax

Channel Islands

Jersey
La Chasse
La Rue de la Vallee
St Mary
Jersey JE3 3DL
+44 1534 722 441
+44 1534 759 354 fax

Representative:
Guernsey
+44 1481 722 448

Scotland

Edinburgh ●
22 Queen Street
Edinburgh
EH2 1JX
+44 131 225 2266
+44 131 220 2547 fax

Bonhams West of Scotland
Kirkhill House
Broom Road East
Newton Mearns
Glasgow
G77 5LL
+44 141 223 8866
+44 141 223 8868 fax

Representatives:
Wine & Spirits
Tom Gilbey
+44 1382 330 256

Wales

Representatives:
Cardiff
Jeff Muse
+44 2920 727 980

EUROPE

Belgium
Boulevard
Saint-Michel 101
1040 Brussels
+32 (0) 2 736 5076
belgium@bonhams.com

Denmark
Henning Thomsen
+45 4178 4799
denmark@bonhams.com

France
4 rue de la Paix
75002 Paris
+33 (0) 1 42 61 10 10
paris@bonhams.com

Germany - Cologne
Albertusstrasse 26
50667 Cologne
+49 (0) 221 2779 9650
cologne@bonhams.com

Germany - Munich
Maximilianstrasse 52
80538 Munich
+49 (0) 89 2420 5812
munich@bonhams.com

Greece
7 Neofytou Vamva Street
Athens 10674
+30 (0) 210 3636 404
athens@bonhams.com

Ireland
31 Molesworth Street
Dublin 2
+353 (0) 1 602 0990
ireland@bonhams.com

Italy - Milan
Via Boccaccio 22
20123 Milano
+39 0 2 4953 9020
milan@bonhams.com

Italy - Rome
Via Sicilia 50
00187 Roma
+39 0 6 48 5900
rome@bonhams.com

The Netherlands
De Lairesestraat 154
1075 HL Amsterdam
+31 (0) 20 67 09 701
amsterdam@bonhams.com

Portugal
Rua Bartolomeu Dias nº
160. 1º
Belem
1400-031 Lisbon
+351 218 293 291
portugal@bonhams.com

Spain - Barcelona
Teresa Ybarra
+34 930 156 686
barcelona@bonhams.com

Spain - Madrid
Nunez de Balboa no 4-1A
28001 Madrid
+34 915 78 17 27
madrid@bonhams.com

Switzerland - Geneva
Rue Etienne-Dumont 10
1204 Geneva
+41 (0) 22 300 3160
geneva@bonhams.com

Switzerland - Zurich
Andrea Bodmer
Dreikönigstrasse 31a
8002 Zürich
+41 44 281 9535
zurich@bonhams.com

MIDDLE EAST

Israel
Joslyne Halibard
+972 (0)54 553 5337
joslyne.halibard@
bonhams.com

NORTH AMERICA

USA

San Francisco ●
220 San Bruno Avenue
San Francisco
CA 94103
+1 (415) 861 7500
+1 (415) 861 8951 fax

Los Angeles ●
7601 W. Sunset Boulevard
Los Angeles
CA 90046
+1 (323) 850 7500
+1 (323) 850 6090 fax

New York ●
580 Madison Avenue
New York, NY
10022
+1 (212) 644 9001
+1 (212) 644 9007 fax

Representatives:

Arizona
Terri Adrian-Hardy
+1 (602) 684 5747
arizona@bonhams.com

California Central Valley
David Daniel
+1 (916) 364 1645
sacramento@bonhams.com

California Palm Springs
Brooke Sivo
+1 (760) 350 4255
palmsprings@bonhams.com

California San Diego
Brooke Sivo
+1 (323) 436 5420
sandiego@bonhams.com

Colorado
Julie Segraves
+1 (720) 355 3737
colorado@bonhams.com

Florida
Jon King
Palm Beach
+1 (561) 651 7876
Miami
+1 (305) 228 6600
Ft. Lauderdale
+1 (954) 566 1630
florida@bonhams.com

Georgia
Mary Moore Bethea
+1 (404) 842 1500
georgia@bonhams.com

Illinois
Ricki Blumberg Harris
+1 (773) 267 3300
chicago@bonhams.com

Massachusetts
Amy Corcoran
+1 (617) 742 0909
boston@bonhams.com

Nevada
David Daniel
+1 (775) 831 0330
nevada@bonhams.com

New Jersey
Alan Fausel
+1 (973) 997 9954
newjersey@bonhams.com

New Mexico
Michael Bartlett
+1 (505) 820 0701
newmexico@bonhams.com

Oregon
Sheryl Acheson
+1(503) 312 6023
oregon@bonhams.com

Pennsylvania
Alan Fausel
+1 (610) 644 1199
pennsylvania@bonhams.com

Texas
Amy Lawch
+1 (713) 621 5988
texas@bonhams.com

Virginia
Gertraud Hechl
+1 (540) 454 2437
virginia@bonhams.com

Washington
Heather O'Mahony
+1 (206) 218 5011
seattle@bonhams.com

Washington DC
Gertraud Hechl
+1 (540) 454 2437
washingtonDC
@bonhams.com

CANADA

Toronto, Ontario ●
Jack Kerr-Wilson
20 Hazelton Avenue
Toronto, ONT
M5R 2E2
+1 (416) 462 9004
info.ca@bonhams.com

Montreal, Quebec
David Kelsey
+1 (514) 894 1138
info.ca@bonhams.com

SOUTH AMERICA

Brazil
+55 11 3031 4444
+55 11 3031 4444 fax

ASIA

Hong Kong ●
Suite 2001
One Pacific Place
88 Queensway
Admiralty
Hong Kong
+852 2918 4321
+852 2918 4320 fax
hongkong@bonhams.com

Beijing
Suite 511
Chang An Club
10 East Chang An Avenue
Beijing 100006
+86(0) 10 6528 0922
+86(0) 10 6528 0933 fax
beijing@bonhams.com

Singapore
Bernadette Rankine
11th Floor, Wisma Atria
435 Orchard Road
Singapore 238877
+65 (0) 6701 8038
+65 (0) 6701 8001 fax
bernadette.rankine@
bonhams.com

Taiwan
Summer Fang
37th Floor, Taipei 101 Tower
Nor 7 Xinyi Road, Section 5
Taipei, 100
+886 2 8758 2898
+886 2 8758 2897 fax
summer.fang@
bonhams.com

AUSTRALIA

Sydney
97-99 Queen Street,
Woollahra, NSW 2025
Australia
+61 (0) 2 8412 2222
+61 (0) 2 9475 4110 fax
info.aus@bonhams.com

Melbourne
Como House
Como Avenue
South Yarra
Melbourne VIC 3141
Australia
+61 (0) 3 8640 4088
+61 (0) 2 9475 4110 fax
info.aus@bonhams.com

AFRICA

Nigeria
Neil Coventry
+234 (0)7065 888 666
neil.coventry@bonhams.com

South Africa - Johannesburg
Penny Culverwell
+27 (0)71 342 2670
penny.culverwel@bonhams.com

Auction Registration Form

(Attendee / Absentee / Online / Telephone Bidding)

Please circle your bidding method above.

--	--	--	--

Paddle number (for office use only)

General Notice: This sale will be conducted in accordance with Bonhams Conditions of Sale, and your bidding and buying at the sale will be governed by such terms and conditions. Please read the Conditions of Sale in conjunction with the Buyer's Guide relating to this sale and other published notices and terms relating to bidding. Payment by personal or business check may result in your property not being released until purchase funds clear our bank. Checks must be drawn on a U.S. bank.

Notice to Absentee Bidders: In the table below, please provide details of the lots on which you wish to place bids at least 24 hours prior to the sale. Bids will be rounded down to the nearest increment. Please refer to the Buyer's Guide in the catalog for further information relating to instructions to Bonhams to execute absentee bids on your behalf. Bonhams will endeavor to execute bids on your behalf but will not be liable for any errors or non-executed bids.

Notice to First Time Bidders: New clients are requested to provide photographic proof of ID - passport, driving license, ID card, together with proof of address - utility bill, bank or credit card statement etc. Corporate clients should also provide a copy of their articles of association / company registration documents, together with a letter authorizing the individual to bid on the company's behalf. Failure to provide this may result in your bids not being processed. For higher value lots you may also be asked to provide a bankers reference.

Notice to online bidders; If you have forgotten your username and password for www.bonhams.com, please contact Client Services.

If successful

- I will collect the purchases myself
- Please contact me with a shipping quote (if applicable)
- I will arrange a third party to collect my purchase(s)

Please email or fax the completed Registration Form and requested information to:

Bonhams Client Services Department
 220 San Bruno Avenue
 San Francisco, California 94103
 Tel +1 (800) 223 2854
 Fax +1 (415) 861 8951
bids.us@bonhams.com

Bonhams

Sale title: Chinese Snuff Bottles from Private American Collections		Sale date: Tuesday June 27, 2017	
Sale no. 24434		Sale venue: San Francisco	
General Bid Increments:			
\$10 - 200by 10s		\$10,000 - 20,000by 1,000s	
\$200 - 500by 20 / 50 / 80s		\$20,000 - 50,000by 2,000 / 5,000 / 8,000s	
\$500 - 1,000by 50s		\$50,000 - 100,000by 5,000s	
\$1,000 - 2,000by 100s		\$100,000 - 200,000by 10,000s	
\$2,000 - 5,000by 200 / 500 / 800s		above \$200,000at the auctioneer's discretion	
\$5,000 - 10,000by 500s		The auctioneer has discretion to split any bid at any time.	
Customer Number		Title	
First Name		Last Name	
Company name (to be invoiced if applicable)			
Address			
City		County / State	
Post / Zip code		Country	
Telephone mobile		Telephone daytime	
Telephone evening		Fax	
Telephone bidders: indicate primary and secondary contact numbers by writing ① or ② next to the telephone number.			
E-mail (in capitals) _____			
By providing your email address above, you authorize Bonhams to send you marketing materials and news concerning Bonhams and partner organizations. Bonhams does not sell or trade email addresses.			
I am registering to bid as a private client <input type="checkbox"/>		I am registering to bid as a trade client <input type="checkbox"/>	
Resale: please enter your resale license number here _____ We may contact you for additional information.			

SHIPPING	
Shipping Address (if different than above):	
Address: _____	Country: _____
City: _____	Post/ZIP code: _____

Please note that all telephone calls are recorded.

Type of bid (A-Absentee, T-Telephone)	Lot no.	Brief description (In the event of any discrepancy, lot number and not lot description will govern.) If you are bidding online there is no need to complete this section.	MAX bid in US\$ (excluding premium and applicable tax) Emergency bid for telephone bidders only*

You instruct us to execute each absentee bid up to the corresponding bid amount indicated above.

* Emergency Bid: A maximum bid (exclusive of Buyer's Premium and tax) to be executed by Bonhams **only** if we are unable to contact you by telephone or should the connection be lost during bidding.

BY SIGNING THIS FORM YOU AGREE THAT YOU HAVE READ AND UNDERSTAND OUR CONDITIONS OF SALE AND SHALL BE LEGALLY BOUND BY THEM, AND YOU AGREE TO PAY THE BUYER'S PREMIUM, ANY APPLICABLE TAXES, AND ANY OTHER CHARGES MENTIONED IN THE BUYER'S GUIDE OR CONDITIONS OF SALE. THIS AFFECTS YOUR LEGAL RIGHTS.	
Your signature:	Date:



EB 1793

Bonhams

220 San Bruno Avenue
San Francisco CA 94103

+1 415 861 7500

+1 415 861 8951 fax

