

CHORAL RISERS



Signature® Choral Risers



Tourmaster® Choral Risers



flipFORMS®



Stage Boxes



SIGNATURE® CHORAL RISERS

Lightweight, easy to set up, durable choral risers.

SIGNATURE® CHORAL RISERS

Our Signature risers were designed to incorporate every meaningful advantage: classic black styling; safe, simple setup; lightweight handling; superb stability; strong, quiet performance; easy mobility; long-lasting service; an integrated backrail with safety crossbar; and a full fifteen-year warranty.

But what you might appreciate most of all is the easy-to-reverse design. You can change your riser arrangement quickly and securely. Optional siderails attach without tools. 3- and 4-step models roll easily through standard doorways.

- ✓ **The Ultimate Performance Riser** – When superb stability and strong, quiet performance are what you’re looking for, choose Signature.
- ✓ **Safe, Simple Setup** – One person setup in a matter of minutes.
- ✓ **Easy Mobility Within Your Facility** – Wheels and patented fold-down design makes maneuvering a breeze.
- ✓ **Safe, Strong, and Stable** – Your singers will feel confident standing on Signature risers. 150 lb live load capacity per square foot (732 kg capacity per square meter).
- ✓ **Great Flexibility** – Steps reverse for more configuration options. No tools necessary.
- ✓ **Quality Assurance** – 15-year warranty.



Lady Bird Johnson Middle School, Irving, Texas



ORDERING INFORMATION

098D053 3-step Signature Riser

098D054 4-step Signature Riser

098D541 Siderail Set (2)

Quantity pricing is available.

Signature steps are available in grey carpet.



Assembly required.

“We use Signature risers daily in our choir room and we roll them to the auditorium for concerts. Setting them up is a piece of cake – they’re wonderful!”

– Robin Rogers, Choral Director, Charleston County School of the Arts, North Charleston, South Carolina

Compact Footprint

Both the 3- and 4-step model fold up for compact storage and easy transportation.



4-step model shown with optional siderails (recommended).



SIGNATURE® CHORAL RISERS

FEATURES:

- Patented fold-down design allows easy one-person setup
- Integral backrail with safety crossbar
- Optional easy-to-attach siderails for extra security
- Wing-nut and bolt step mount provides the safety of bolted construction but lets you reverse steps and create new setup configurations without tools
- 3- and 4-step riser sets available
- Formed and welded steel construction for unparalleled stability and quiet performance
- Sturdy, permanently attached backrails with child-height crossbar
- 15-year warranty

SIGNATURE CHORAL RISER SETS

Signature Choral Risers create a magnificent display when grouped in sets. Use the charts below as a general guideline when determining your needs, and please call your Wenger representative for help in making your final selection.

3-STEP SIGNATURE (098D053)		
GROUP CAPACITY*	UNITS NEEDED	SPACE REQUIRED
12-16	1	6'0"w x 4'10"d (1.8 m x 1.5 m)
24-32	2	11'10"w x 6'4"d (3.6 m x 1.9 m)
36-48	3	17'5"w x 6'3"d (5.3 m x 1.9 m)
48-64	4	22'5"w x 7'7"d (6.8 m x 2.3 m)
60-80	5	26'10"w x 9'0"d (8.2 m x 2.7 m)
72-96	6	30'7"w x 10'10"d (9.3 m x 3.3 m)
84-112	7	33'6"w x 12'9"d (10.2 m x 3.9 m)
96-128	8	35'5"w x 15'0"d (10.8 m x 4.6 m)

4-STEP SIGNATURE (098D054)		
GROUP CAPACITY*	UNITS NEEDED	SPACE REQUIRED
17-23	1	6'6"w x 6'0"d (2 m x 1.8 m)
34-46	2	12'10"w x 6'11"d (3.9 m x 2.1 m)
51-69	3	18'10"w x 7'9"d (5.7 m x 2.4 m)
68-92	4	24'3"w x 9'1"d (7.4 m x 2.8 m)
85-115	5	29'1"w x 10'6"d (8.9 m x 3.2 m)
102-138	6	33'1"w x 12'4"d (10.1 m x 3.8 m)
119-161	7	36'2"w x 14'4"d (11 m x 4.4 m)
136-184	8	38'4"w x 16'6"d (11.7 m x 5 m)

*First number indicates how many high school students will fit on a riser set if all students stand shoulder to shoulder. Second number indicates how many students will fit on a riser set if they are all facing center with shoulders overlapping. Numbers include a row of students standing on the floor. Adult groups should use lower number.

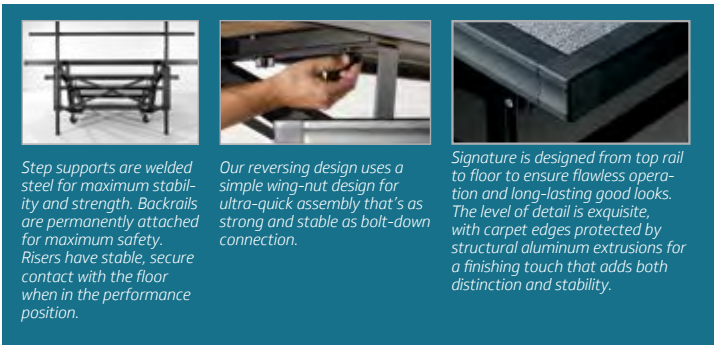
SIMPLE ONE-PERSON SETUP:



A Signature Choral Riser is easy for one person to roll and control.

Just maneuver it into place and unfold with a single fluid motion.

It sets up quickly and easily and provides excellent stability.



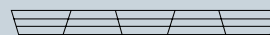
Step supports are welded steel for maximum stability and strength. Backrails are permanently attached for maximum safety. Risers have stable, secure contact with the floor when in the performance position.

Our reversing design uses a simple wing-nut design for ultra-quick assembly that's as strong and stable as bolt-down connection.

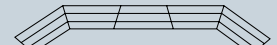
Signature is designed from top rail to floor to ensure flawless operation and long-lasting good looks. The level of detail is exquisite, with carpet edges protected by structural aluminum extrusions for a finishing touch that adds both distinction and stability.

RISER REVERSIBILITY

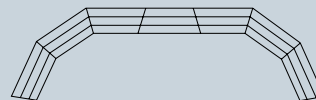
Wenger makes it easy to change riser arrangements by simply switching the position of the steps on the frame. You can configure Signature® and Tourmaster® into straight, winged, horseshoe, or semicircular designs that are every bit as secure as the original position.



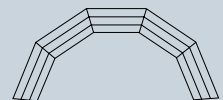
For a straight arrangement, alternate reversed riser units with regular units.



For a winged arrangement, reverse only the center unit.



For a horseshoe arrangement, reverse the center unit and add three regular units to each end.



For a semicircular arc, place regular units end to end.

ADDITIONAL INFORMATION:



Please call for additional literature or view on our website.



Scan with your smartphone to view video

COMPANION PRODUCTS:



TOURMASTER® CHORAL RISERS

The lightweight, easy to set up choral riser that's perfect for travel.

TOURMASTER® CHORAL RISERS

No other risers fold, roll, set up, or travel so smoothly. In fact, it's easy to take it around tight corners, across the parking lot, into a bus or a van. No wonder it's the #1 choral riser in the world.

Precision engineering and using only the best materials means Tourmaster risers will deliver reliable operation for a long, long time. It ensures that Tourmaster Choral Risers are definitely your best traveling riser value.

- ✓ **#1 Choral Riser in the World** – A proven design that can withstand the rigors of institutional use.
- ✓ **Best Traveling Riser Value** – Across country or across town, Tourmaster Risers fold, roll, and travel smoothly.
- ✓ **Compact Storage Footprint** – Minimal storage space required when not in use.
- ✓ **Safe and Solid** – A traveling riser with 125 lb per sq ft load capacity.
- ✓ **Maximum Flexibility** – Complete line of options and accessories available. Steps can be reversed for more configurations.
- ✓ **Quality Assurance** – 15-year warranty.

ORDERING INFORMATION

024H657 6' (1.8 m) 3-step, 18" (46 cm) step, Riser
 024H667 6' (1.8 m) 4th-step Addition
 024G778 6' (1.8 m) Backrail
 024F950 Cart for 6' (1.8 m) Riser, 18" (46 cm) step

024H642 4' (1.2 m) 3-step, 18" (46 cm) step, Riser
 024H652 4' (1.2 m) 4th-step Addition
 024G763 4' (1.2 m) Backrail
 024F951 Cart for 4' (1.2 m) Riser, 18" (46 cm) step

024H672 4'7" (1.4 m) 3-step, 24" (61 cm) step Riser
 024H682 4'7" (1.4 m) 4th-step Addition
 024G763 4' (1.2 m) Backrail
 024F952 Cart for 4' (1.2 m) Riser, 24" (61 cm) step

024F017 Siderails Set (2)

Note: Siderails work on all sizes.
 4th step needs to be removed for storage.



Grey carpet (standard)



Cork School of Music, Cork, Ireland



"We have several sets of Tourmaster risers, which we use in different places around campus, like the refectory, chapel or headmaster's house. We also take them off-campus. Their flexibility and mobility makes them perfect for us."

– Robert Palmer, Chairman of Performing Arts, Avon Old Farms School, Avon, Connecticut

TOURMASTER® CHORAL RISERS

FEATURES:

- Durable carpeted plywood steps in both 18" (46 cm) and 24" (61 cm) depth (24" option offers extra space for choirs that hold their music)
- Steps can be reversed to create different configurations (tools required)
- Steel frame with heavy-duty wheels and built-in stair glides stands up to years of use
- Optional 4th-step, backrails and siderails available
- 3-step models in 4' (1.2 m), 4' 7" (1.4 m) and 6' (1.8 m) lengths.
- Some assembly required
- 15-year warranty

TOURMASTER SETS UP IN JUST SECONDS.



Tourmaster units roll smoothly through hallways, around tight corners, and up and down stairways.



Each unit quickly unfolds accordion-style.



Step on the frame and pull the riser toward you to raise it to the upright position.



Optional safety backrails and siderails attach quickly and securely without tools.



Move and store your riser sets wherever you need them. Each cart holds up to four risers, plus backrails and 4th-step additions. * Requires 2 people

TOURMASTER CHORAL RISER SETS

Tourmaster Choral Risers come in sets to match the needs of any size group. Use the charts below as a general guideline, and please call your Wenger representative for help in determining what makes the most sense for your situation, today and tomorrow.

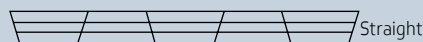
18" (46 cm) 3-Step 6' (1.8 m) Tourmaster SETS			18" (46 cm) 3-Step 4' (1.2 m) Tourmaster SETS			24" (61 cm) 3-Step 4'7" (1.4 m) Tourmaster SETS		
GROUP CAPACITY*	UNITS NEEDED	SPACE REQUIRED	GROUP CAPACITY*	UNITS NEEDED	SPACE REQUIRED	GROUP CAPACITY*	UNITS NEEDED	SPACE REQUIRED
12-16	1	6'0"w x 4'7"d (1.8 m x 1.4 m)	8-12	1	4'3"w x 4'8"d (1.3 m x 1.4 m)	8-12	1	4'7"w x 6'2"d (1.4 m x 1.9 m)
24-32	2	11'10"w x 5'5"d (3.6 m x 1.7 m)	16-24	2	8'6"w x 5'0"d (2.6 m x 1.5 m)	16-24	2	9'2"w x 6'6"d (2.8 m x 2.0 m)
36-48	3	17'5"w x 6'1"d (5.3 m x 1.9 m)	24-36	3	12'7"w x 5'4"d (3.8 m x 1.6 m)	24-36	3	13'6"w x 6'10"d (4.1 m x 2.1 m)
48-64	4	22'5"w x 7'7"d (6.8 m x 2.3 m)	32-48	4	16'8"w x 6'1"d (5.1 m x 1.9 m)	32-48	4	17'10"w x 7'7"d (5.6 m x 2.3 m)
60-80	5	26'10"w x 8'10"d (8.2 m x 2.7 m)	40-60	5	20'4"w x 6'8"d (6.2 m x 2 m)	40-60	5	21'10"w x 8'2"d (6.7 m x 2.5 m)
72-96	6	30'7"w x 10'10"d (9.3 m x 3.3 m)	48-72	6	23'10"w x 7'8"d (7.3 m x 2.3 m)	48-72	6	25'8"w x 9'3"d (7.8 m x 2.8 m)
84-112	7	33'5"w x 12'7"d (10.2 m x 3.8 m)	56-84	7	27'0"w x 8'8"d (8.2 m x 2.6 m)	56-84	7	29'2"w x 10'2"d (8.9 m x 3.1 m)
96-128	8	35'5"w x 15'2"d (10.8 m x 4.6 m)	64-96	8	30'0"w x 9'11"d (9.1 m x 3 m)	64-96	8	32'3"w x 11'6"d (9.8 m x 3.5 m)

18" (46 cm) 4-foot (1.2 m), 4th-step addition will add space for 3-4 performers per unit. 24" (61 cm), 4th-step addition will add space for 3-4 performers per unit. 18" (46 cm) 6-foot (1.8 m), 4th-step addition will add space for 4-5 performers per unit.

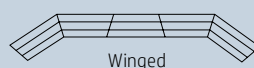
*First number indicates how many performers will fit on a riser set if all performers stand shoulder to shoulder. Second number indicates how many performers will fit on a riser set if they are all facing center with shoulders overlapping. Numbers include a row of performers standing on the floor. Adult groups should use the lower capacity number.

RISER REVERSIBILITY

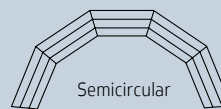
Wenger makes it easy to change riser arrangements by simply switching the position of the steps on the frame.



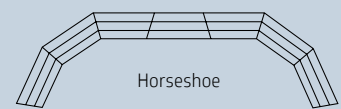
Straight



Winged



Semicircular



Horseshoe

ADDITIONAL INFORMATION:



Brochure



Tech Sheet



Video



Website

Please call for additional literature or view on our website.

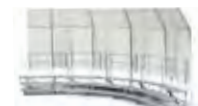


Scan with your smartphone to view video

COMPANION PRODUCTS:



StageTek™ Staging



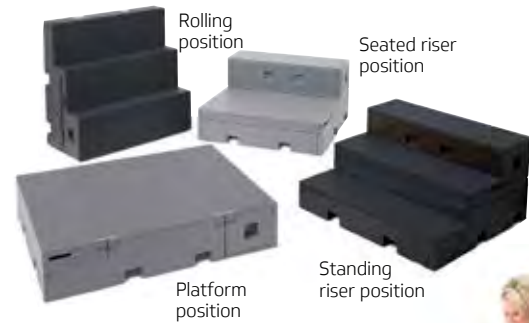
Travelmaster® Acoustical Shell

FLIPFORMS® AND STAGE BOXES

Versatile, multi-position platforms and interlocking boxes for theatre use.



Prosper High School, Prosper, Texas



flipFORMS flip into four different positions.

Stage Boxes come in three sizes.



flipFORMS® AND STAGE BOXES

Benches, sofa, bar, risers, stages, dancing platforms — flipFORMS and Stage Boxes are the perfect building blocks for performing arts. Now actors can fully rehearse their blocking while the set is being built. They're lightweight, easy to move and built to last. Their versatility gives you so many options for use on your stage.

- ✓ **Lightweight Design** – Polyethylene construction is lightweight yet durable, letting actors, directors and crew move them with ease.
- ✓ **Multi-Shape Capability** – flipFORMS are designed to flip into several shapes, meaning you'll find new ways to use them every day. Stage Boxes stack securely in many configurations.
- ✓ **Skid-Resistant Surface** – Ensure stable footing for your performers.
- ✓ **An Improvement on Wood Forms** – More durable, more flexible and easier to handle than hammered together forms.
- ✓ **Versatile** – Combine Stage Boxes with Wenger flipFORMS® and you can build and re-build many configurations to match your needs.

ORDERING INFORMATION

025D028 flipFORMS Black Top/Black Base

025D027 flipFORMS Grey Top/Grey Base

Quantity pricing is available.

029A105 Large Stage Box

029A104 Medium Stage Box

029A103 Small Stage Box

029A098 Set of 3 Stage Boxes (one of each size)

ADDITIONAL INFORMATION:



Product Sheet



Tech Sheet



Website

Please call for additional literature or view on our website.

COMPANION PRODUCTS:



StageTek™ Staging

flipFORMS FEATURES:

- Built with molded, high-density polyethylene making them nearly indestructible
- Skid-resistant surface
- flipFORMS are available in Black or Grey. Assembly required

STAGE BOXES FEATURES:

- Lightweight low-density polyethylene for exceptional durability
- Hollow underside is great for carrying props and other items
- Sized to match basic furniture dimensions
- Skid-resistant surface
- Easy-to-handle units store compactly
- Dimensions:
 - Large - 24"w x 24"d x 18"h (61 cm x 61 cm x 45 cm)
 - Medium - 18"w x 16"d x 12"h (45 cm x 41 cm x 31 cm)
 - Small - 12"w x 16"d x 8"h (31 cm x 41 cm x 21 cm)



Blue Valley Southwest High School, Overland Park, Kansas