

# Citrix Lifecycle Management

Comprehensive cloud-based service lifecycle management solution

IT administrators are realizing that application deployments are getting more complex and error-prone than ever before. Additionally, the deployment of Citrix workloads and enterprise applications is only the first step in the lifecycle of applications. Once the workloads are deployed, IT administrators must continuously monitor the health of the workloads to ensure they are running at optimum performance, can scale efficiently to meet changing demands and are always available to end users even in case of application component or environment failures.

#### Key Benefits

- Accelerate deployment of Citrix workloads and enterprise applications on virtual, private or public cloud environments
- Simplify ongoing management of Citrix workloads and enterprise applications
- Improve application performance and availability and simplify disaster recovery of Citrix workloads and enterprise applications

To address these needs, enterprises are looking for an integrated IT service lifecycle management solution that empowers IT to design, deploy and manage a broad array of application workloads through a unified console. Citrix Lifecycle Management helps IT effectively tackle these challenges by automating the delivery of application workloads. Citrix Lifecycle Management is optimized to deliver Citrix workloads and enterprise applications as automated services and significantly accelerates the time-to-value and simplifies management for mobile workspaces. An easy-to-use graphical workflow editor ensures that services are easy to design and deploy in an automated fashion and that the automation is repeatable, reducing the number of errors during deployment. Additionally, open and flexible architecture gives IT service designers the flexibility to increase levels of automation as processes mature.

[Citrix Lifecycle Management](#) enables IT organizations to become faster and more agile while delivering reliable and repeatable results with a comprehensive cloud-based lifecycle management solution.

#### **Citrix Lifecycle Management is delivered as a service through Citrix Workspace Cloud.**

[Citrix Workspace Cloud](#) is a delivery and management platform enabling faster set-up and time-to-value for Citrix technologies. IT administrators use it to create mobile workspaces that help people work more productively from virtually anywhere, on any device. Services can be delivered from any cloud, on-premises infrastructure, or a hybrid model.

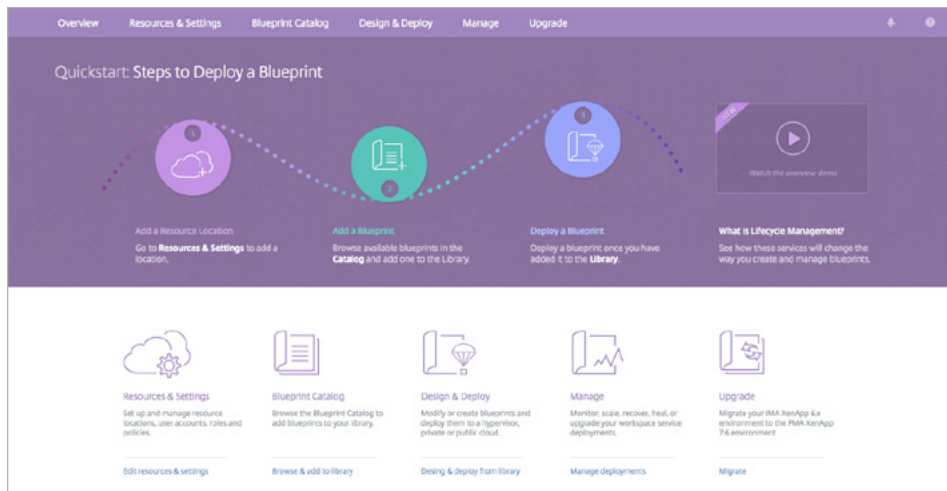
#### **Citrix Lifecycle Management**

Citrix Lifecycle Management is a comprehensive cloud-based service lifecycle management solution to accelerate and simplify the design, deployment and on-going management of Citrix and enterprise applications. Supporting all types of IT workloads across virtual and private/public cloud environments, Citrix Lifecycle Management enables IT organizations to become faster, more cost-effective and more agile. Built on a blueprint-based architecture, Citrix Lifecycle Management provides a unified, and standardized set of management tools for rapid and best-practice-driven design, deployment, and management of Citrix workloads and enterprise applications. Citrix Lifecycle Management includes out-of-the-box blueprints for XenDesktop, XenApp, XenMobile and Citrix Workspace Suite.

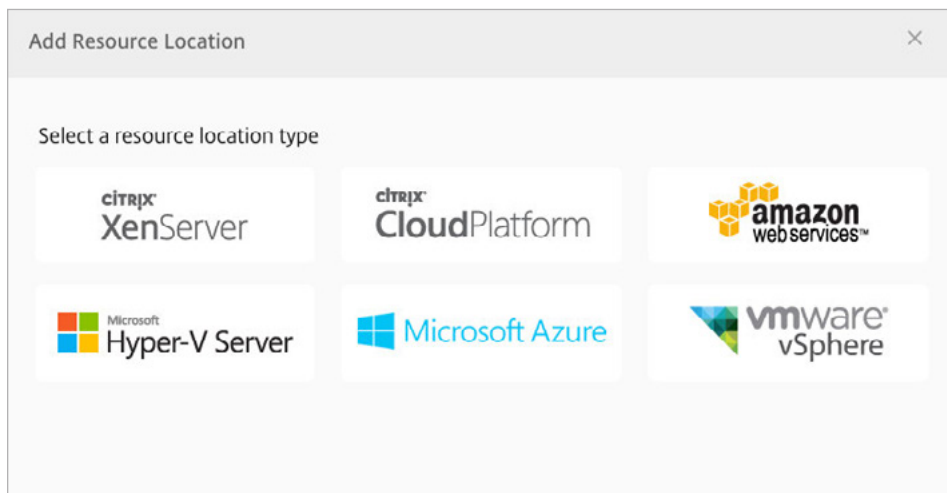
## Key features

- **Service Lifecycle Management with service blueprints.** Simplify the design, deployment, monitoring and updating of IT services. Deploy application workloads as automated services to virtual, private or public cloud environments by selecting desired deployment destinations and environments, and configuring the size and scale of Citrix workloads and enterprise application deployments.
- **Out-of-the-box blueprints for Citrix workloads.** Enable accelerated time-to-value for Citrix workloads. Minimize the complexity associated with the ongoing management of Citrix workloads through standardized deployment best practices and management tools. Out-of-the-box blueprints for XenDesktop, XenApp, XenMobile, NetScaler and Workspace Suite simplify how administrators and operators of Citrix workloads design, deploy, manage and deliver these workloads to enterprise end-users.
- **A unified interface for the deployment and management of application services.** Simplify application service management by using a unified interface for provisioning IT services, managing users, monitoring and scaling. Cloud based control enables access to the Citrix Lifecycle Management console from anywhere, from any device. It involves low initial investment and provides flexibility with pay-as-you-go model and allows enterprises to make incremental investments in the product subscription as value is realized. Also, the SaaS model needs limited on-premises installation of software and reduces the pain of upgrades as there are no patches or newer versions to install as additional functionality is added to the product.
- **Service monitoring and alerting.** Monitor the health, performance and availability of application workloads in real-time fashion on application monitoring dashboards. Gain the ability to configure the metrics to be monitored, alerts for these metrics and set thresholds on when the alerts are issued. Additionally, administrators can set triggers to enable redundancy, automatic scaling or disaster recovery. Automatically monitor application availability for IT and provision and configure new instances to meet performance expectations.
- **Auto-scaling and disaster recovery of applications.** Maintain service quality with automatic scaling of application workloads. Specify triggers for auto-scaling at each tier of an IT service based on a combination of metrics that are being monitored for the servers and applications. Automatically execute blueprint components to add or remove instances from each tier as part of the auto-scaling event. Improve service availability with the capability to define a disaster recovery site. In case of failure on the primary site, automatically launch the secondary site to maintain service continuity.

### Citrix Lifecycle Management dashboard



### Add resource location



Blueprint catalog

The screenshot shows the 'Blueprint Catalog' section of the Citrix Lifecycle Management console. The navigation bar includes 'Overview', 'Resources & Settings', 'Blueprint Catalog', 'Design & Deploy', 'Manage', and 'Upgrade'. A search bar is located at the top right of the catalog area.

Under the 'Solutions' heading, there are six blueprint cards:

- Workspace Cloud: Resource Location**: This blueprint creates a Citrix Workspace Cloud Resource Location consisting of a Domain Controller, a Bastion host, two ... [View info](#)
- XenApp and XenDesktop with SQL**: This blueprint creates a production-ready XenApp or XenDesktop deployment that you attach to your existing Active ... [View info](#)
- XenApp and XenDesktop without ...**: This blueprint creates a production-ready XenApp or XenDesktop deployment that you attach to your existing Active ... [View info](#)
- XenMobile Enterprise or Advanced Edition**: This blueprint configures XenMobile Enterprise or Advanced Edition which consists of a pair of XenMobile appliance... [View info](#)
- XenMobile MDM Edition**: This blueprint configures XenMobile MDM Edition which consists of a pair of XenMobile appliances and MDM and ... [View info](#)
- XenApp and XenDesktop Proof of ...**: This blueprint creates a standalone, small scale installation of XenDesktop suitable for a proof of concept ... [View info](#)

Each card includes the provider 'Citrix Systems Inc.' and an action button: 'Added to Library', 'Update', or a plus sign.

Library

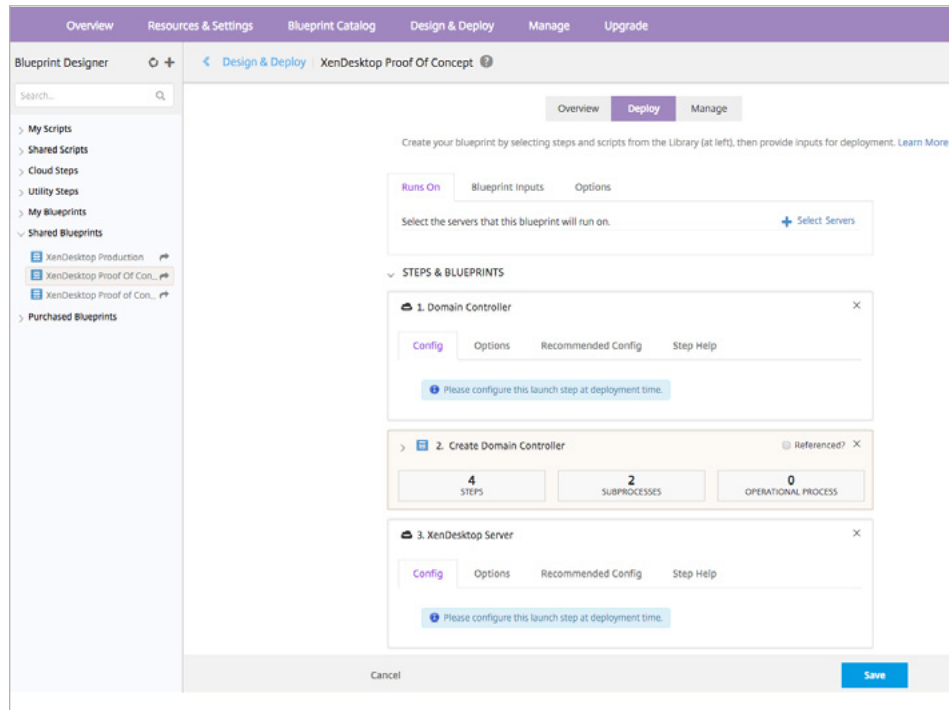
The screenshot shows the 'Library' section of the Citrix Lifecycle Management console. The navigation bar is the same as in the Blueprint Catalog view. On the left, there is a sidebar with filters: 'All', 'Owned by me', 'Shared with me', 'Added From Catalog', and 'Object Types' (with 'Blueprint' selected).

The main area displays a table of blueprints:

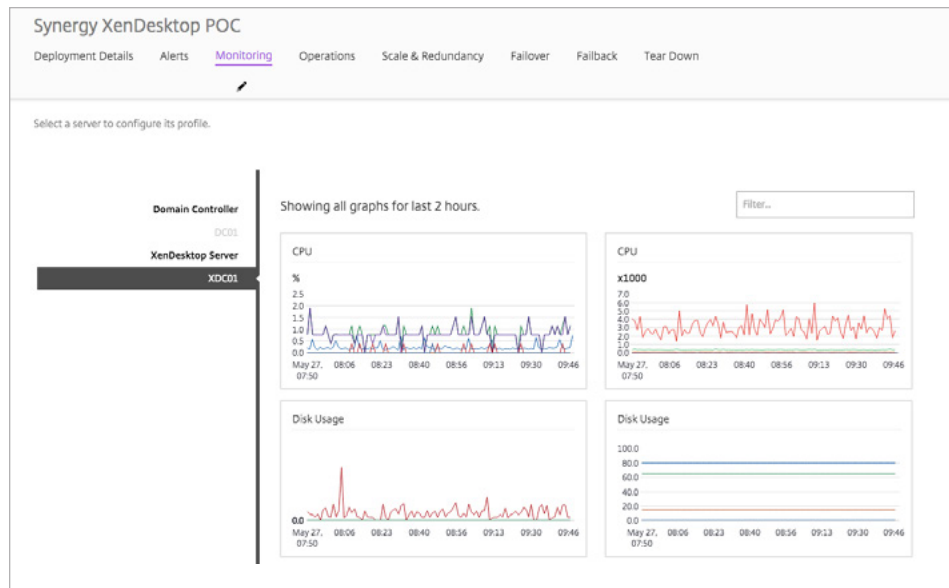
Type	Name	Actions	Description	Last updated
	XenDesktop Proof of Concept V3 (3)	▼	This blueprint creates a standalone, small scale installation of XenDesktop suitable for a proof of concept deployment. A new Active Directory domain will be created with a single do...	May 12, 2015 08:22PM
	XenDesktop Production	▼	Deploys all components of Xendesktop across multiple servers. Deploys the following server roles: 1. Active Directory Domain Controller 2. Software Repository 3. SQL 2012 Server...	May 19, 2015 04:38PM
	XenDesktop Proof Of Concept	▼	This blueprint creates a standalone, small scale installation of XenDesktop suitable for a proof of concept deployment. - A new Active Directory domain will be created with a single do...	May 26, 2015 07:31PM

At the bottom of the table, it says 'Showing 1 to 3 of 3 entries'.

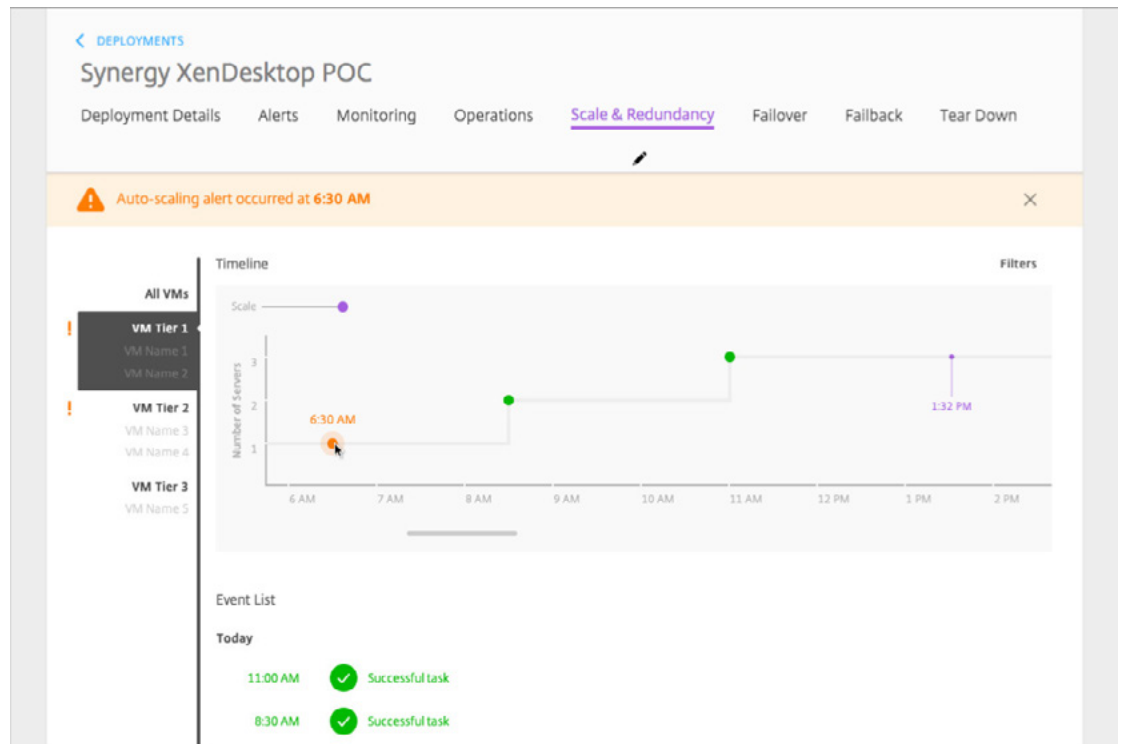
### Blueprint designer



### Deployment monitoring



Deployment auto-scaling



Upgrade Service.

Overview Resources & Settings Blueprint Catalog Design & Deploy Manage **Upgrade**

### Steps to Upgrade a Deployment

- Connect**  
Connect your existing XenApp 6.x farm to Lifecycle Management
- Analyze**  
Get application and policy settings from your XenApp 6.x farm
- Migrate**  
Migrate application and policy settings to XenApp 7.6 Site

### My Upgrade Projects

[+ Add Upgrade Project](#)

Name	Description	Upgrade type	Upgrade/Migration status	Actions
XenApp 6.5 to 7.6	Upgrade from XenApp 6.5 to 7.6 for Santa Clara site	XenApp 6.0 to XenApp 7.6	Applications - Policies -	⌵

Showing 1 to 1 from 1 entries

## Summary

Citrix Lifecycle Management provides a streamlined approach allowing IT to deploy and manage Citrix workloads and enterprise applications across a hybrid environment, whether virtual, cloud or on-premises. Application service design is made simple with a graphical workflow editor. IT administrators can leverage out-of-the-box blueprints or create custom ones to automate IT service management activities. Citrix Lifecycle Management empowers IT administrators by providing complete visibility into the IT service lifecycle and enables management of IT services in an automated fashion.

**Corporate Headquarters**  
Fort Lauderdale, FL, USA

**India Development Center**  
Bangalore, India

**Latin America Headquarters**  
Coral Gables, FL, USA

**Silicon Valley Headquarters**  
Santa Clara, CA, USA

**Online Division Headquarters**  
Santa Barbara, CA, USA

**UK Development Center**  
Chalfont, United Kingdom

**EMEA Headquarters**  
Schaffhausen, Switzerland

**Pacific Headquarters**  
Hong Kong, China



### About Citrix

Citrix (NASDAQ:CTXS) is leading the transition to software-defining the workplace, uniting virtualization, mobility management, networking and SaaS solutions to enable new ways for businesses and people to work better. Citrix solutions power business mobility through secure, mobile workspaces that provide people with instant access to apps, desktops, data and communications on any device, over any network and cloud. With annual revenue in 2014 of \$3.14 billion, Citrix solutions are in use at more than 330,000 organizations and by over 100 million users globally. Learn more at [www.citrix.com](http://www.citrix.com)

Copyright © 2015 Citrix Systems, Inc. All rights reserved. Citrix, XenDesktop, XenApp, XenMobile, Citrix Workspace Suite and NetScaler are trademarks of Citrix Systems, Inc. and/or one of its subsidiaries, and may be registered in the U.S. and other countries. Other product and company names mentioned herein may be trademarks of their respective companies.