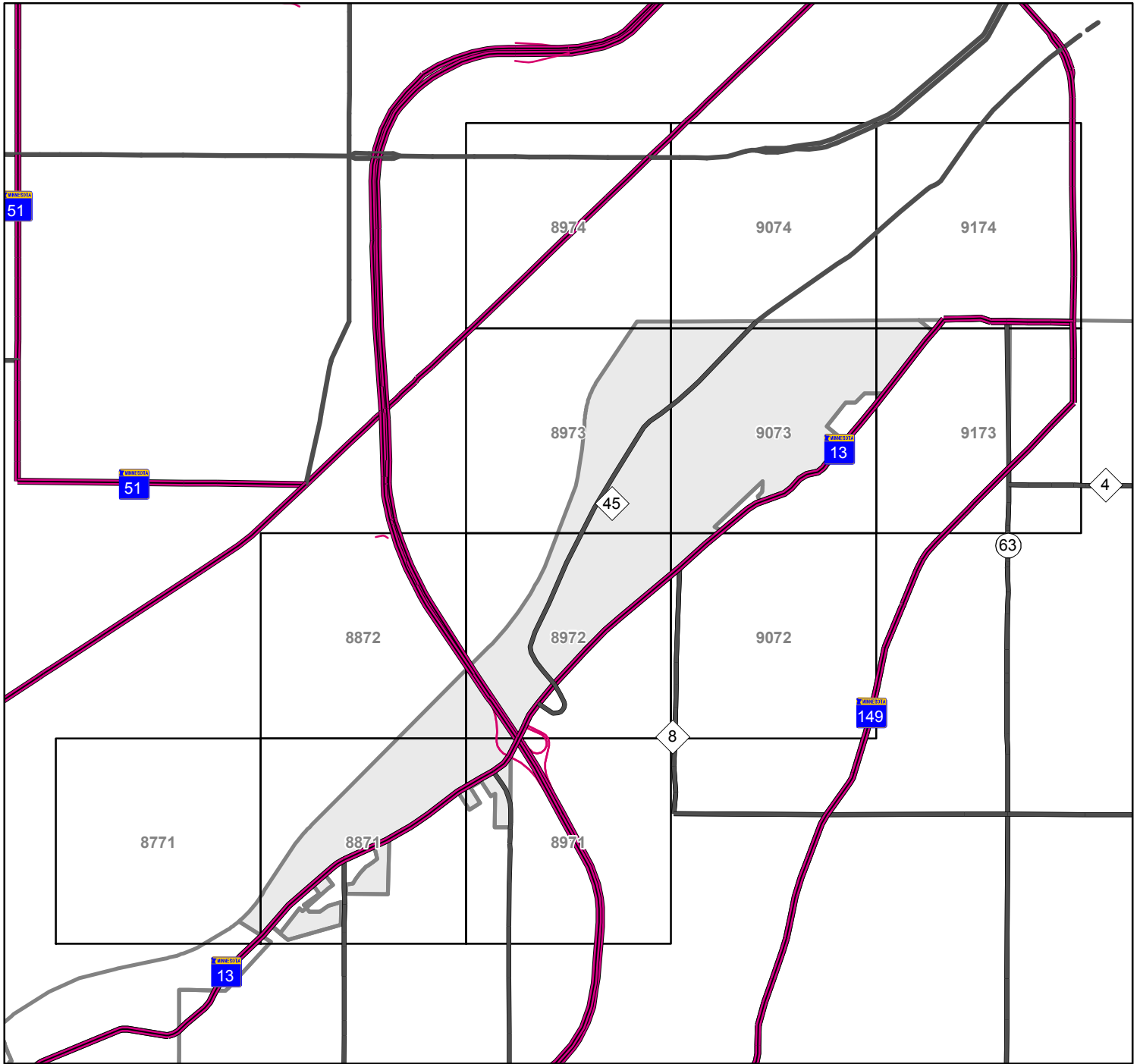


# City of Lilydale, MN



## Legend

- |  |                                  |  |                              |  |                         |  |                              |
|--|----------------------------------|--|------------------------------|--|-------------------------|--|------------------------------|
|  | Fire Hydrant                     |  | Road Edge/Curb Edge/Sidewalk |  | Buildings               |  | State/Local Park             |
|  | Church                           |  | Driveway                     |  | Military Install        |  | Zoo                          |
|  | School                           |  | Gravel Road                  |  | Marinas                 |  | Arboretums/Nature Centers    |
|  | City Hall                        |  | Trail                        |  | Educational Institution |  | Fair Grounds                 |
|  | Fire Station                     |  | Railroad Track               |  | Airport or Airfield     |  | Beach                        |
|  | Hospital/Clinic/Medical Facility |  | Creek/Stream                 |  | Industrial Park         |  | Island                       |
|  | Library                          |  | Ditch                        |  | Amusement Center        |  | Lake or Pond                 |
|  | Police Station                   |  | State Trail                  |  | Golf Course             |  | parcels_dako                 |
|  | County Service Center            |  |                              |  | Cemetery                |  | City and Township Boundaries |
|  | Shopping Center                  |  |                              |  | National Park           |  | County Boundary              |
|  |                                  |  |                              |  |                         |  | 100 Meter USNG               |

# Reading US National Grid (USNG) Coordinates: “Read right, then up.”

Information Sheet 1 in this series.

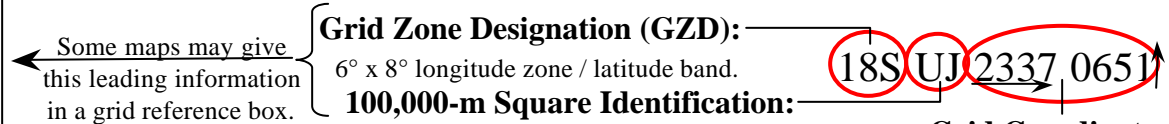
FGDC-STD-011-2001

From [www.fgdc.gov/usng](http://www.fgdc.gov/usng)

The example below locates the Jefferson Pier at USNG: 18S UJ 23371 06519.

U.S. National Grid	
100,000-m Square ID	
UJ	<sup>43</sup> 00
UH	
Grid Zone Designation	
18S	

A USNG value has three components.



“Read right, then up.”

- Grid lines are identified by **Principal Digits**. Ignore the small superscript numbers like those in the lower left corner of this map.

## Reading USNG Grid Coordinates.

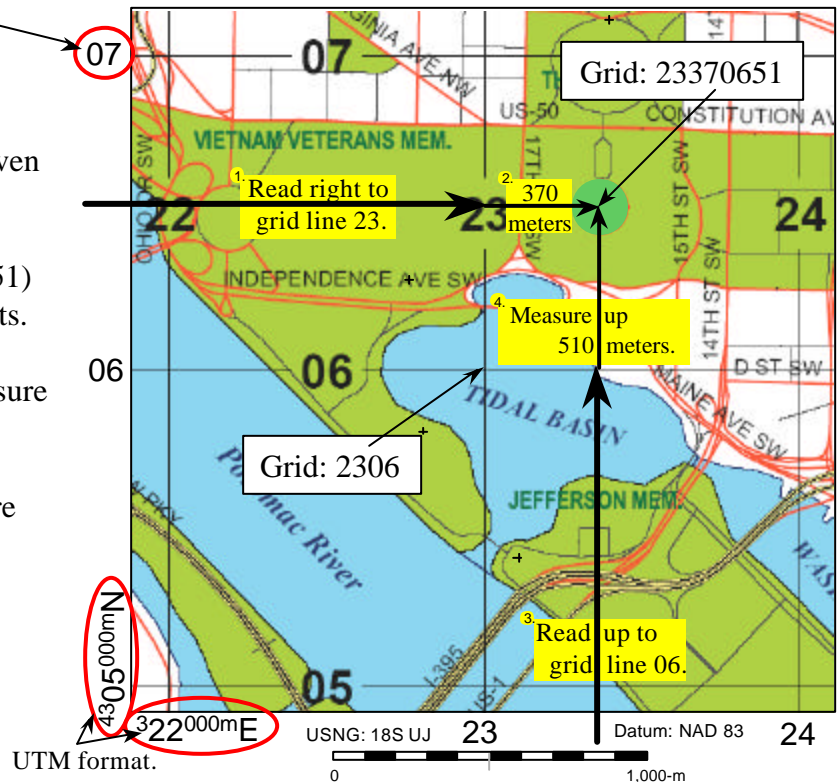
- Coordinates are always given as an even number of digits (i.e. 23370651).

- Separate coordinates in half (2337 0651) into the easting and northing components.

<sup>1</sup>- Read right to grid line 23. <sup>2</sup> Then measure right another 370 meters. (Think 23.37)

<sup>3</sup>- Read up to grid line 06. <sup>4</sup> Then measure up another 510 meters. (Think 06.51)

Grid:	Examples:
228058	FDR Memorial: +
231054	George Mason Memorial: +
2338 0710	Zero Milestone: +
2275 0628	DC War Memorial: +
213017	Ft. Scott Park:



Ignore the small UTM superscript numbers that are provided for reference purposes.

UTM numerical values are best suited for determining direction and distance as in surveying. USNG alpha-numeric values are best suited for describing particular locations because they can be given as only grid coordinates and with only the precision required for a particular task.

Users determine the required precision. These values represent a point position (southwest corner) for an area of refinement.	Four digits:	23 06	Locating a point within a 1,000-m square.
	Six digits:	233 065	Locating a point within a 100-m square (football field size).
	Eight digits:	2337 0651	Locating a point within a 10-m square (modest size home).
	Ten digits:	23371 06519	Locating a point within a 1-m square (parking space size).

A modest size home can be found or identified in a local area with only an 8-digit grid. → Full USNG: 18S UJ 2337 0651 - World wide unique.  
 Without Grid Zone Designation (GZD): UJ 2337 0651 - Regional areas.  
 Without GZD and 100,000-m Square ID: 2337 0651 - Local areas.

This illustrates how USNG coordinates can be used in a phone directory or advertisement like a universal map index value. Unlike classic atlas grids (i.e. B3), these can be used with any paper map using the national grid and in web map portals such as the Washington, DC GIS (<http://dcgis.dc.gov>) or The National Map (<http://nmviewogc.cr.usgs.gov/viewer.htm>)

They can also be used in consumer GPS receivers to directly guide you to the location. This is especially beneficial at night, in heavy traffic, or after major disasters when street signs are missing.

Point of Interest	Street Address	USNG Grid: 18S UJ	Telephone: (202)
Subway Sandwich & Salads	2030 M St., NW	2256 0826	223-2587
Subway Sandwich & Salads	430 8th St., SE	2698 0567	547-8200
Subway Sandwich & Salads	3504 12th St., NE	2740 1120	526-5999
Subway Sandwich & Salads	1500 Benning Rd, NE	2815 0757	388-0421

# US National Grid (USNG) Coordinates: *World wide context.*

Information Sheet 2 in this series.

FGDC-STD-011-2001

From [www.fgdc.gov/usng](http://www.fgdc.gov/usng)

The example below locates the Jefferson Pier at USNG: 18S UJ 23371 06519.

U.S. National Grid	
100,000-m Square ID	
UJ	43 00
UH	
Grid Zone Designation	18S

A USNG value has three components.

Some maps may give this leading information in a grid reference box.

**Grid Zone Designation (GZD):**  
6° x 8° longitude zone / latitude band.

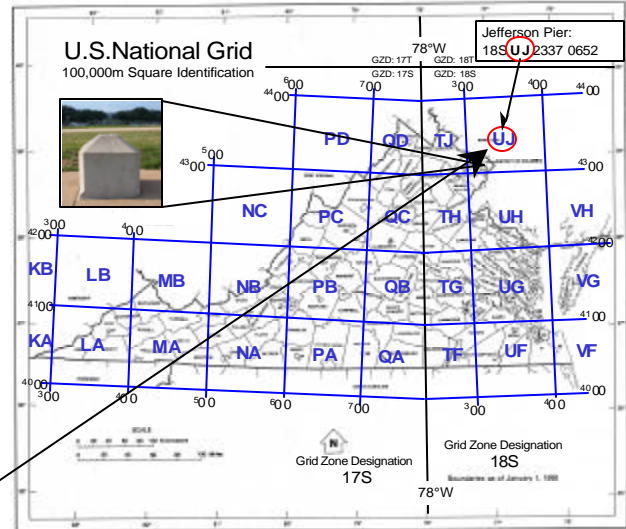
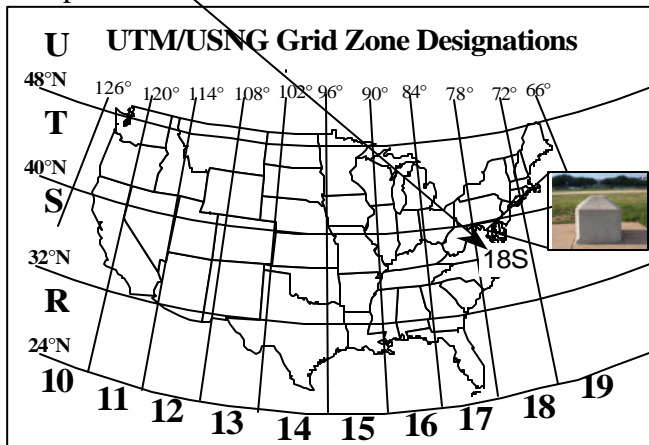
**100,000-m Square Identification:**

18S UJ 2337 0651

**Grid Coordinates:**  
Read right, then up

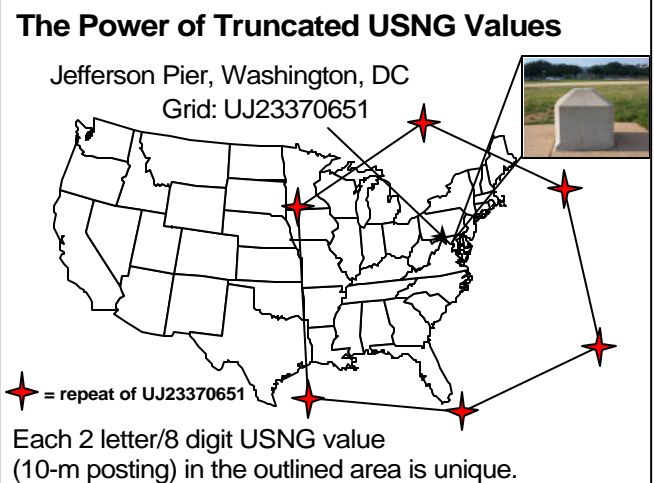
*“Read right, then up.”*

USNG values have three components as seen above. The GZD gives a USNG value world-wide context with 60 longitudinal zones each 6° wide. Zones 10 - 19 cover the conterminous US as seen below left. Zones are divided into 8° latitudinal bands. Together these make up Grid Zone Designations (GZD). Example: 18S

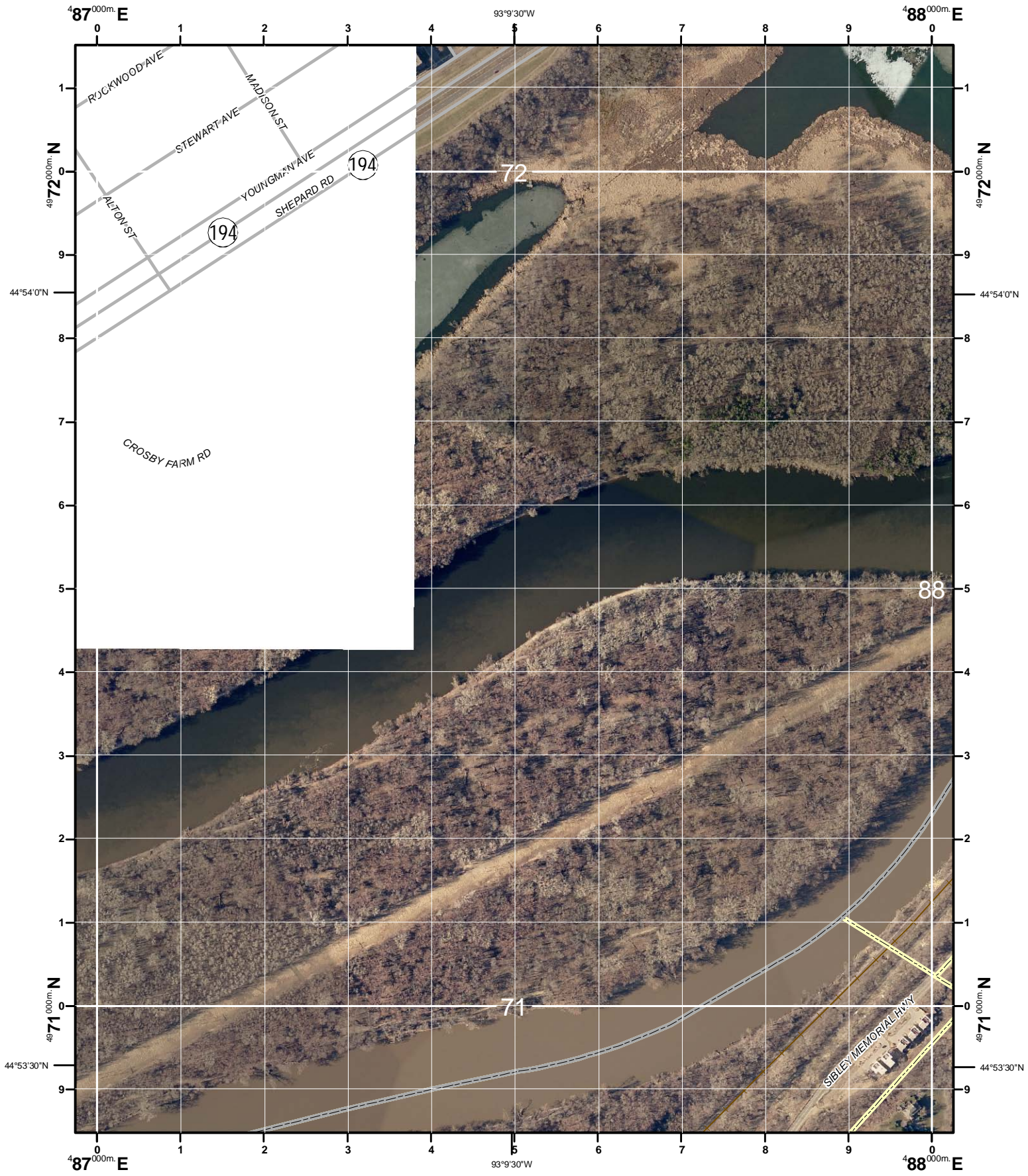


100,000-m Square Identifications  
Example: UJ

GZDs are further subdivided into large squares with 100,000-m Square Identifications. In this example, the Jefferson Pier is located in UJ. These squares are organized and lettered so they do not repeat themselves but every 18°, which is approximately 1,000 miles in the mid-latitudes. The illustration at right depicts how far one must go before the letters UJ repeat. This ensures a given value such as UJ 2337 0651 is unique out of the entire state it is located in, as well as all surrounding states.

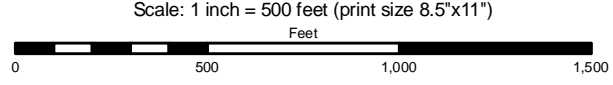


In general, people can use the grid coordinates alone--for example: 233 065. Although the same numbers recurs about every 60 miles, normally that will cause no problem when the general location is understood. This is similar to the way you would tell someone only the last digits of a phone number when the area code is obvious. If there is a possibility of confusion include the letter pair too--for example: UJ 233 065. A letter pair recurs about every 1000 miles, so even in a disaster relief project there will be no other point with those coordinates in a local area. Full USNG coordinates such as 18S UJ 233 065 are worldwide unique. Typically a GPS or other electronic device requires coordinates in that form since unlike a human it doesn't intuitively understand the general location from context. You should always give full coordinates whenever abbreviated coordinates might not be clear or when listing them on letterhead, a business card or advertisement.



1000-m GRID, US NATIONAL GRID  
 NORTH AMERICAN DATUM 1983  
 GRID ZONE DESIGNATION 15T  
 100,000-m SQUARE IDENTIFICATION: VK

U.S. National Grid
100,000-m Square ID
VK
Grid Zone Designator
15T

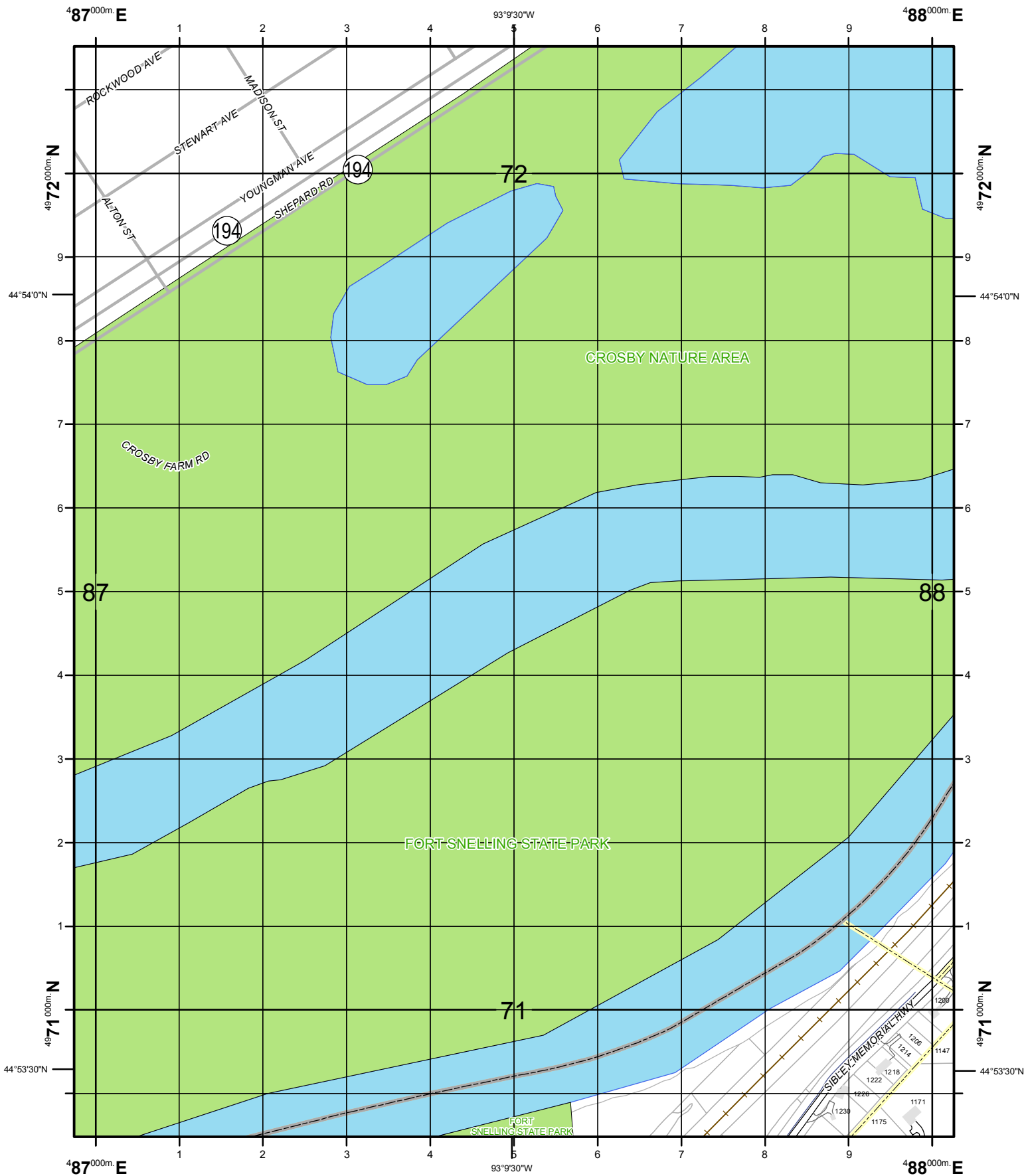


PREPARED BY: DAKOTA COUNTY OFFICE OF GIS, NOVEMBER 25, 2009  
 CORRECTIONS AND ADDITIONS SHOULD BE BROUGHT TO THE ATTENTION OF THE ABOVE ORGANIZATION  
 PHONE : (952) 891-7081  
 This map was created using the FGDC Standard for the U.S. National Grid  
 FGDC-STD-011-2001

8672	8772	8872
8671	8771	8871
8670	8770	8870



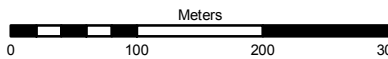
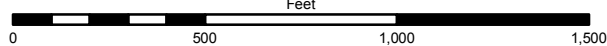
For additional information  
 see <http://www.fgdc.gov/usng>



1000-m GRID, US NATIONAL GRID  
 NORTH AMERICAN DATUM 1983  
 GRID ZONE DESIGNATION 15T  
 100,000-m SQUARE IDENTIFICATION: VK

U.S. National Grid
100,000-m Square ID
VK
Grid Zone Designator
15T

Scale: 1 inch = 500 feet (print size 8.5"x11")

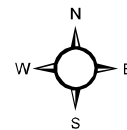


PREPARED BY: DAKOTA COUNTY OFFICE OF GIS, MARCH 3, 2009  
 CORRECTIONS AND ADDITIONS SHOULD BE BROUGHT TO THE ATTENTION OF THE ABOVE ORGANIZATION  
 PHONE : (952) 891-7081

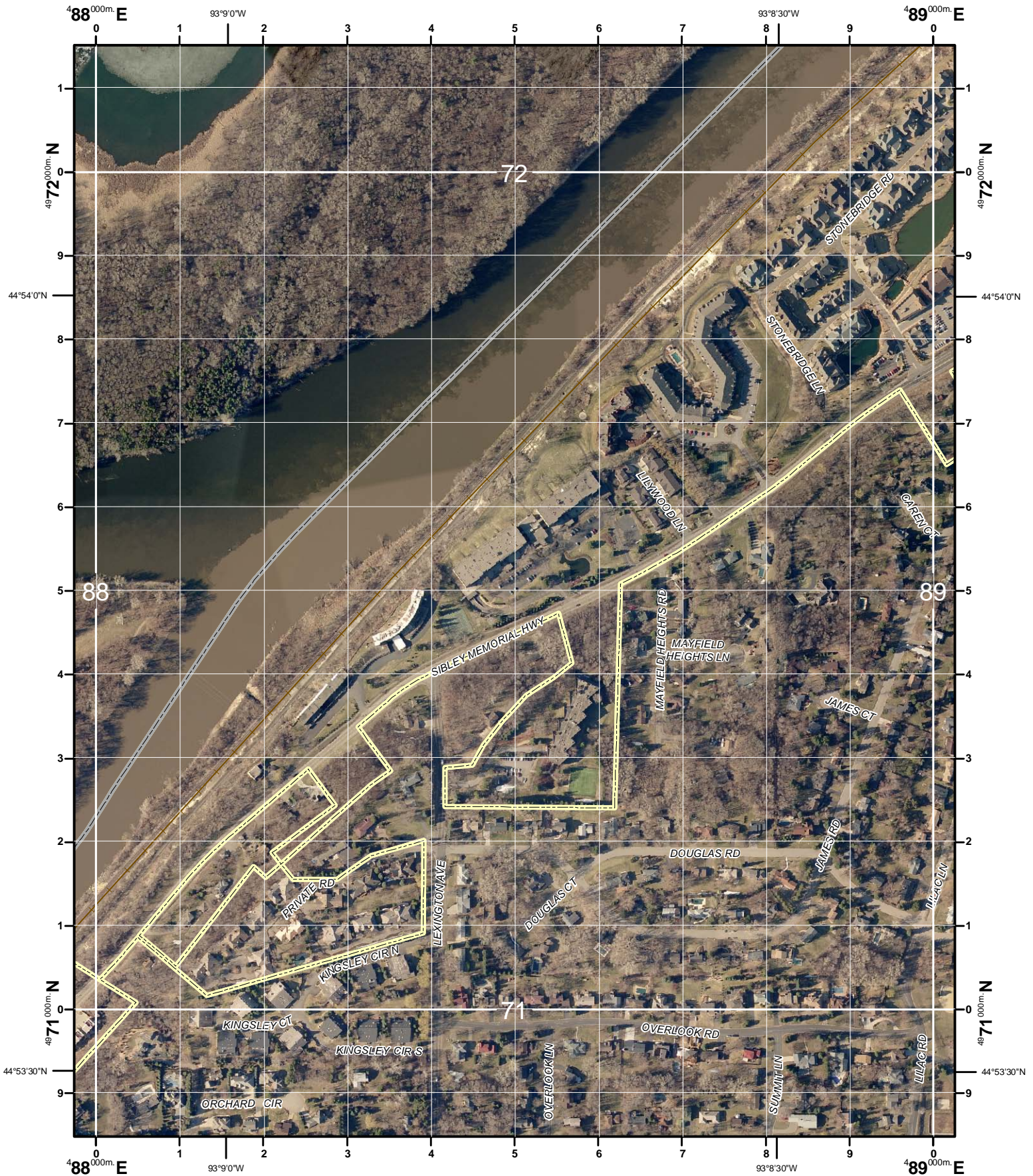
This map was created using the FGDC Standard for the U.S. National Grid  
 FGDC-STD-011-2001

For additional information  
 see <http://www.fgdc.gov/usng>

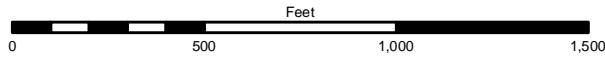
		8872
		8871
8670	8770	8870



8771



Scale: 1 inch = 500 feet (print size 8.5"x11")



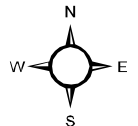
1000-m GRID, US NATIONAL GRID  
 NORTH AMERICAN DATUM 1983  
 GRID ZONE DESIGNATION 15T  
 100,000-m SQUARE IDENTIFICATION: VK

U.S. National Grid
100,000-m Square ID
VK
Grid Zone Designator
15T

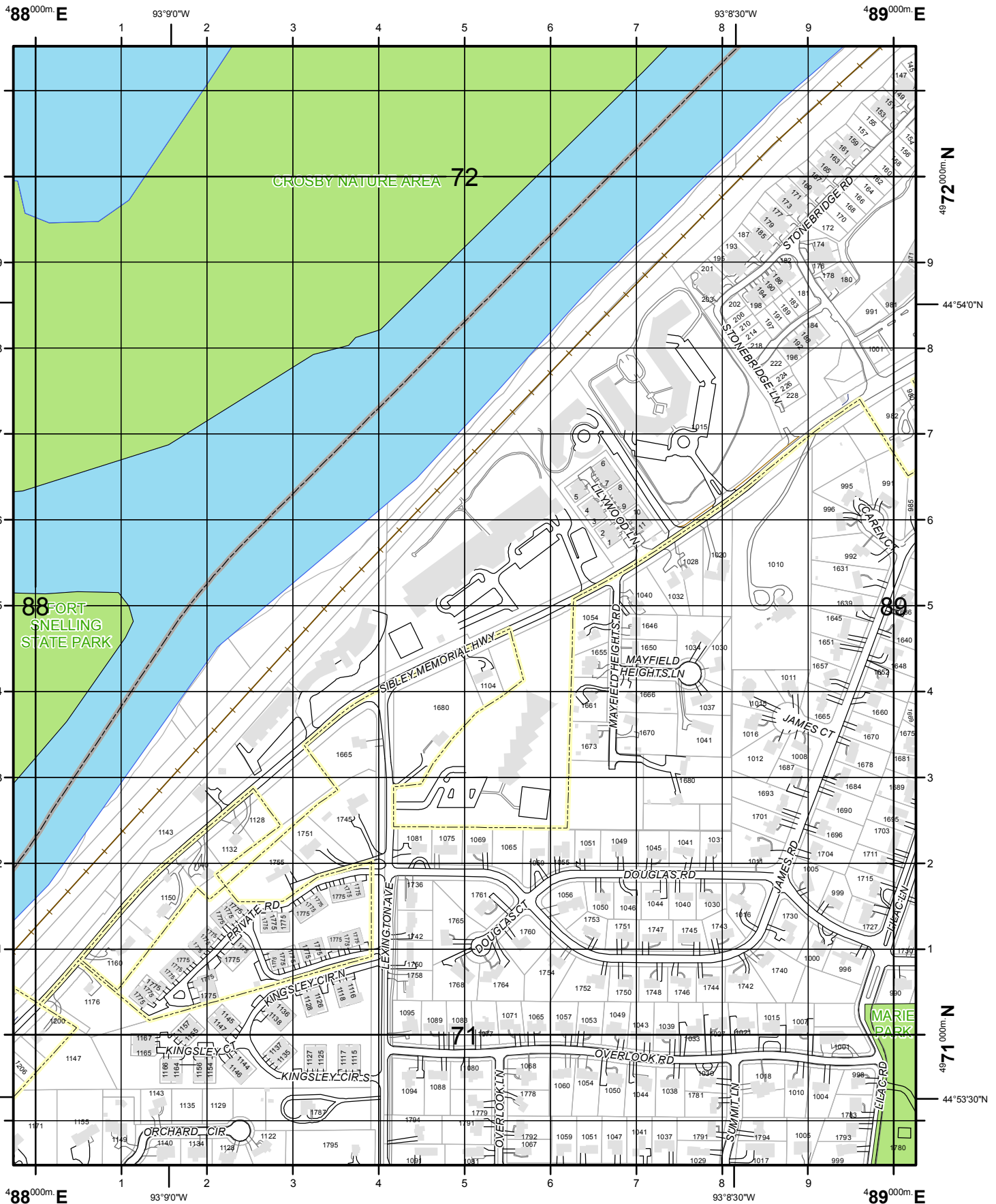
PREPARED BY: DAKOTA COUNTY OFFICE OF GIS, NOVEMBER 25, 2009  
 CORRECTIONS AND ADDITIONS SHOULD BE BROUGHT TO THE ATTENTION OF THE ABOVE ORGANIZATION  
 PHONE : (952) 891-7081  
 This map was created using the FGDC Standard for the U.S. National Grid  
 FGDC-STD-011-2001

For additional information  
 see <http://www.fgdc.gov/usng>

8772	8872	8972
8771	8871	8971
8770	8870	8970

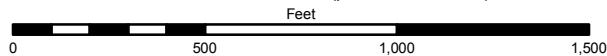


8871



1000-m GRID, US NATIONAL GRID  
 NORTH AMERICAN DATUM 1983  
 GRID ZONE DESIGNATION 15T  
 100,000-m SQUARE IDENTIFICATION: VK

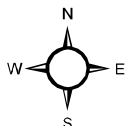
Scale: 1 inch = 500 feet (print size 8.5"x11")



U.S. National Grid
100,000-m Square ID
VK
Grid Zone Designator
15T

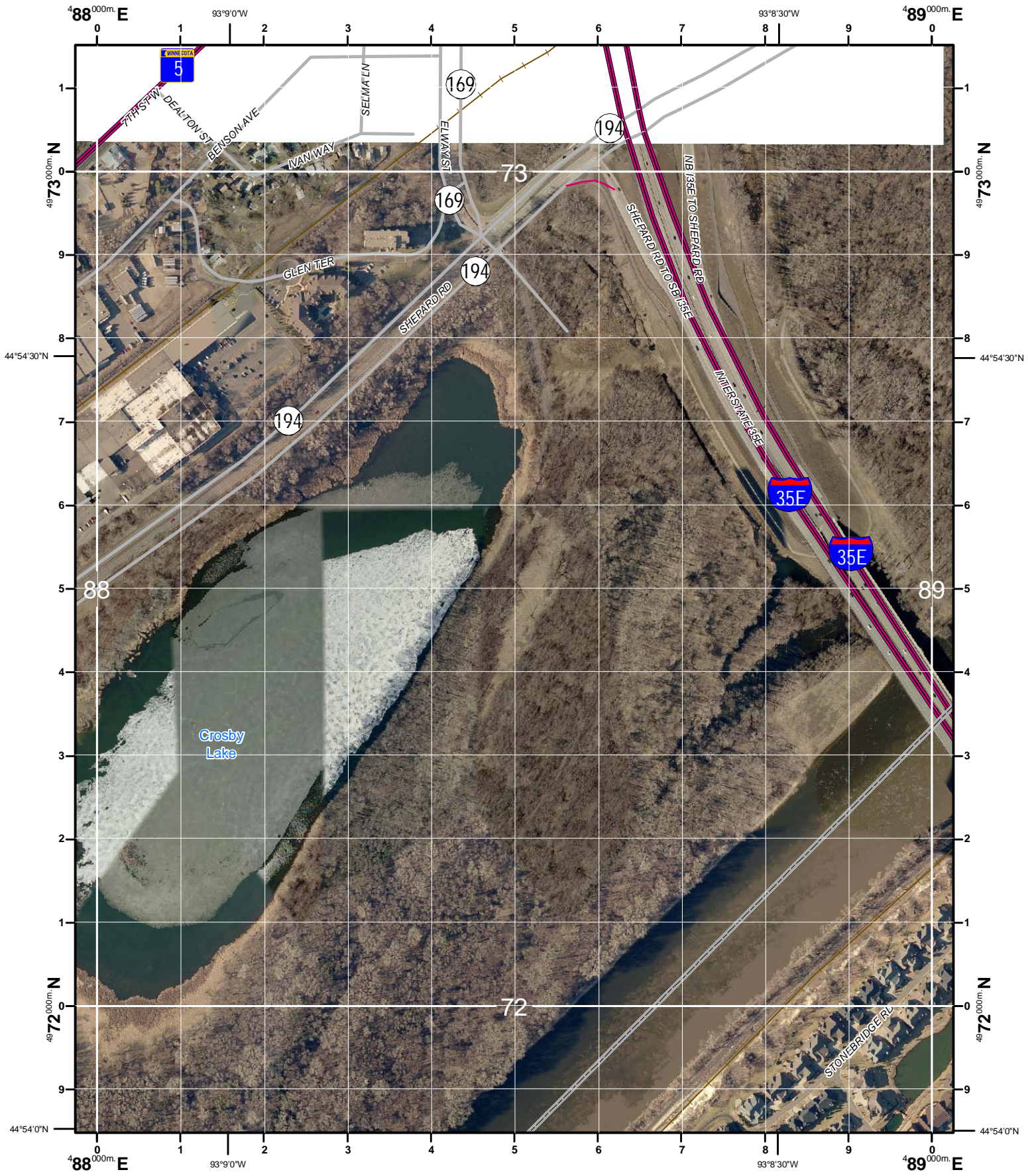
PREPARED BY: DAKOTA COUNTY OFFICE OF GIS, MARCH 3, 2009  
 CORRECTIONS AND ADDITIONS SHOULD BE BROUGHT TO THE ATTENTION OF THE ABOVE ORGANIZATION  
 PHONE : (952) 891-7081  
 This map was created using the FGDC Standard for the U.S. National Grid  
 FGDC-STD-011-2001

8872	8972
8771	8971
8770	8870
8870	8970

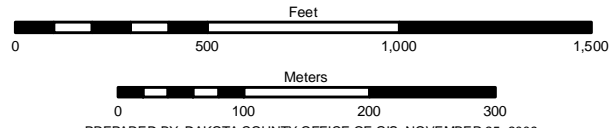


8871

For additional information  
 see <http://www.fgdc.gov/usng>



Scale: 1 inch = 500 feet (print size 8.5"x11")



1000-m GRID, US NATIONAL GRID  
 NORTH AMERICAN DATUM 1983  
 GRID ZONE DESIGNATION 15T  
 100,000-m SQUARE IDENTIFICATION: VK

U.S. National Grid
100,000-m Square ID
VK
Grid Zone Designator
15T

PREPARED BY: DAKOTA COUNTY OFFICE OF GIS, NOVEMBER 25, 2009  
 CORRECTIONS AND ADDITIONS SHOULD BE BROUGHT TO THE ATTENTION OF THE ABOVE ORGANIZATION  
 PHONE : (952) 891-7081  
 This map was created using the FGDC Standard for the U.S. National Grid  
 FGDC-STD-011-2001

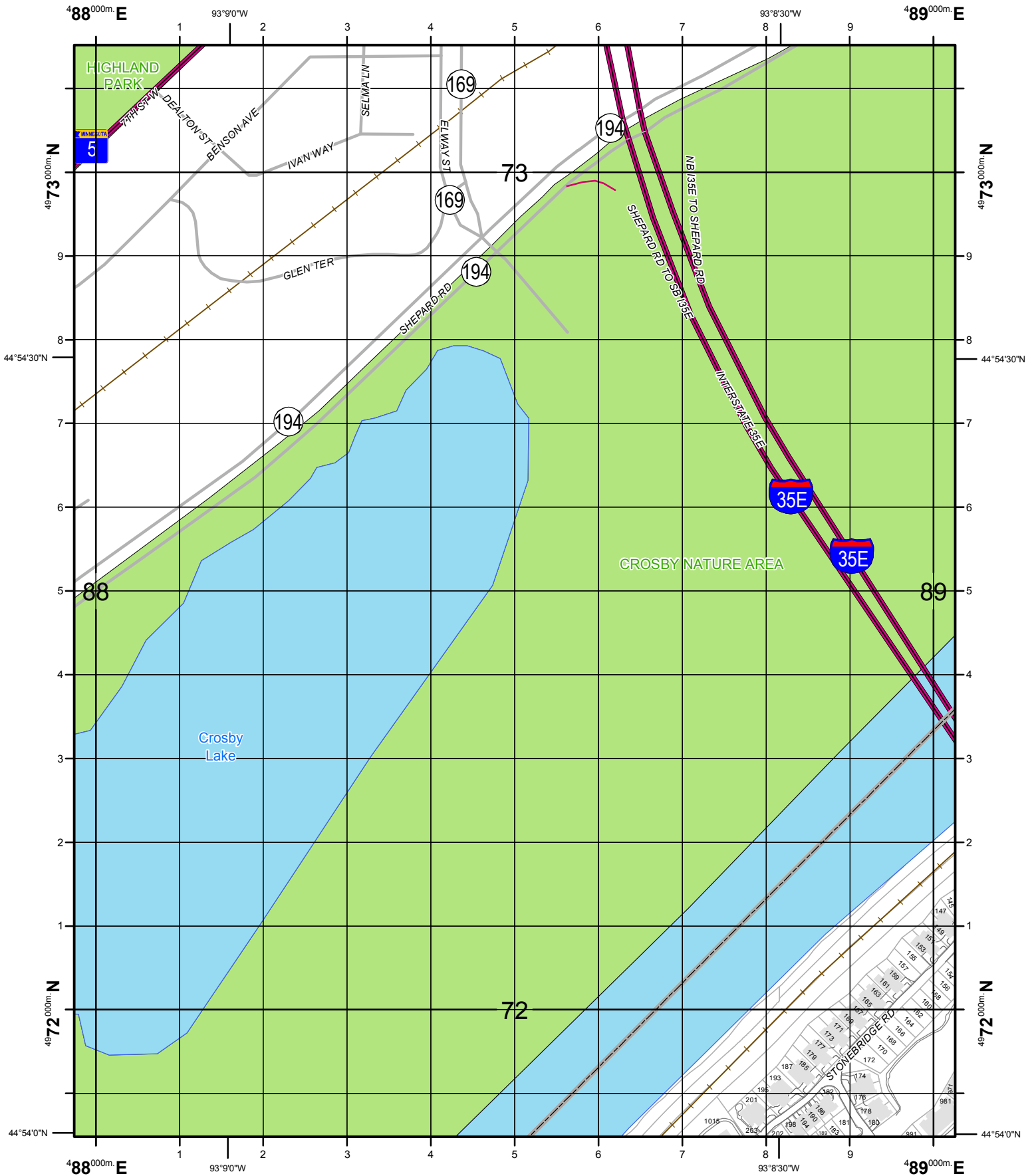
For additional information  
 see <http://www.fgdc.gov/usng>

8773	8873	8973
8772	8872	8972
8771	8871	8971



8872

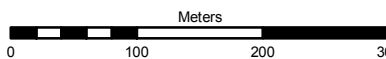
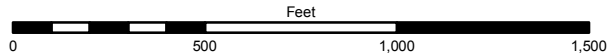




1000-m GRID, US NATIONAL GRID  
 NORTH AMERICAN DATUM 1983  
 GRID ZONE DESIGNATION 15T  
 100,000-m SQUARE IDENTIFICATION: VK

U.S. National Grid
100,000-m Square ID
VK
Grid Zone Designator
15T

Scale: 1 inch = 500 feet (print size 8.5"x11")

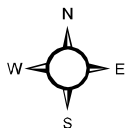


PREPARED BY: DAKOTA COUNTY OFFICE OF GIS, MARCH 3, 2009  
 CORRECTIONS AND ADDITIONS SHOULD BE BROUGHT TO THE ATTENTION OF THE ABOVE ORGANIZATION  
 PHONE : (952) 891-7081

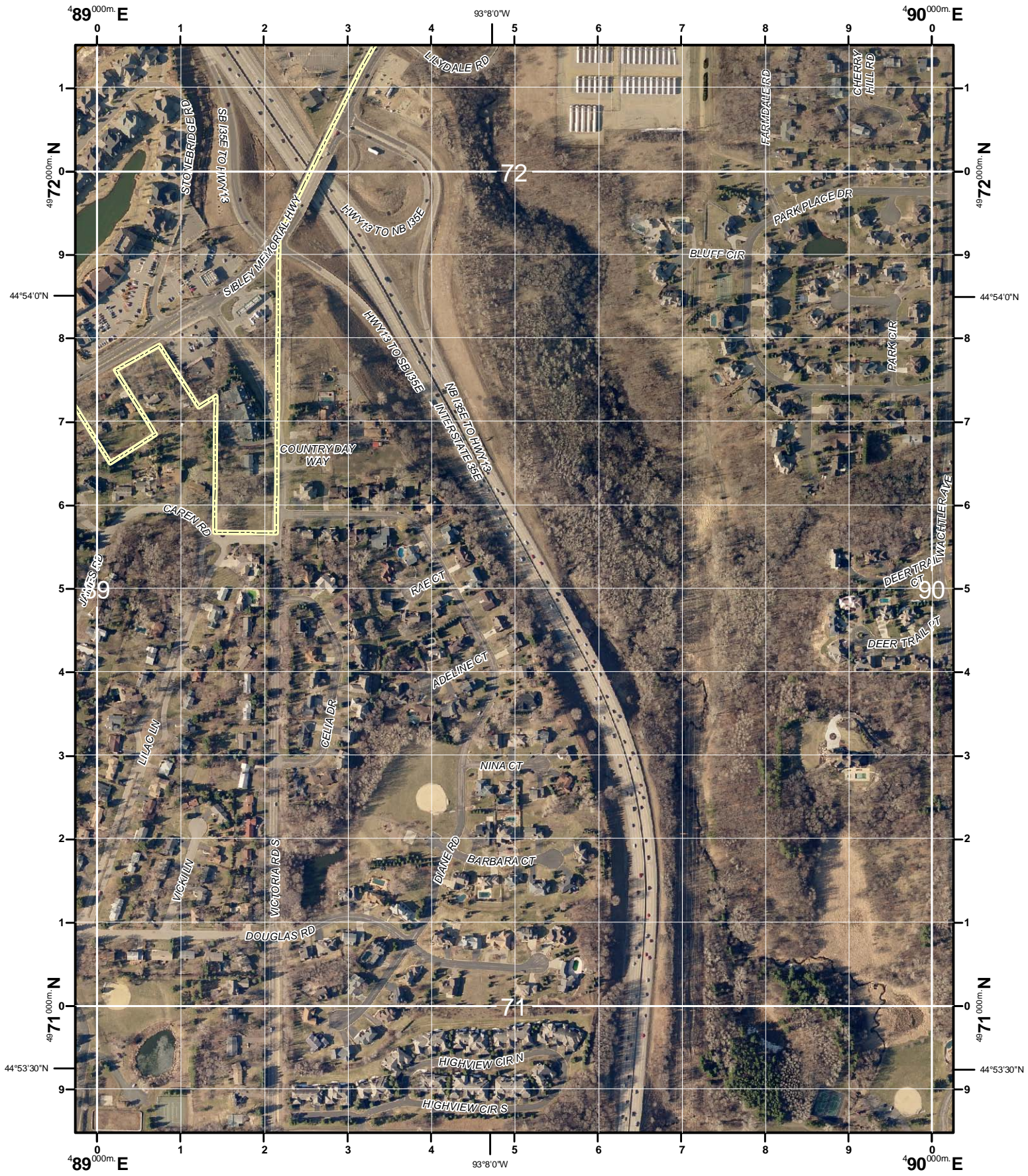
This map was created using the FGDC Standard for the U.S. National Grid  
 FGDC-STD-011-2001

For additional information  
 see <http://www.fgdc.gov/usng>

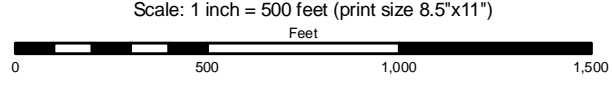
		8973
		8972
8771	8871	8971



8872



1000-m GRID, US NATIONAL GRID  
 NORTH AMERICAN DATUM 1983  
 GRID ZONE DESIGNATION 15T  
 100,000-m SQUARE IDENTIFICATION: VK



8872	8972	9072
8871	8971	9071
8870	8970	9070



PREPARED BY: DAKOTA COUNTY OFFICE OF GIS, NOVEMBER 25, 2009  
 CORRECTIONS AND ADDITIONS SHOULD BE BROUGHT TO THE ATTENTION OF THE ABOVE ORGANIZATION  
 PHONE : (952) 891-7081  
 This map was created using the FGDC Standard for the U.S. National Grid  
 FGDC-STD-011-2001

For additional information  
 see <http://www.fgdc.gov/usng>

89°00m E 93°80'W 90°00m E

49°72'00m N

49°72'00m N

44°54'0"N

44°54'0"N

49°71'00m N

49°71'00m N

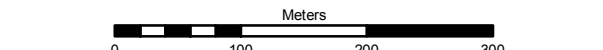
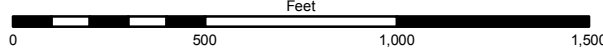
44°53'30"N

44°53'30"N

89°00m E 93°80'W 90°00m E

1000-m GRID, US NATIONAL GRID  
NORTH AMERICAN DATUM 1983  
GRID ZONE DESIGNATION 15T  
100,000-m SQUARE IDENTIFICATION: VK

Scale: 1 inch = 500 feet (print size 8.5"x11")



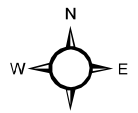
PREPARED BY: DAKOTA COUNTY OFFICE OF GIS, MARCH 3, 2009  
CORRECTIONS AND ADDITIONS SHOULD BE BROUGHT TO THE ATTENTION OF THE ABOVE ORGANIZATION  
PHONE : (952) 891-7081

This map was created using the FGDC Standard for the U.S. National Grid  
FGDC-STD-011-2001

For additional information  
see <http://www.fgdc.gov/usng>

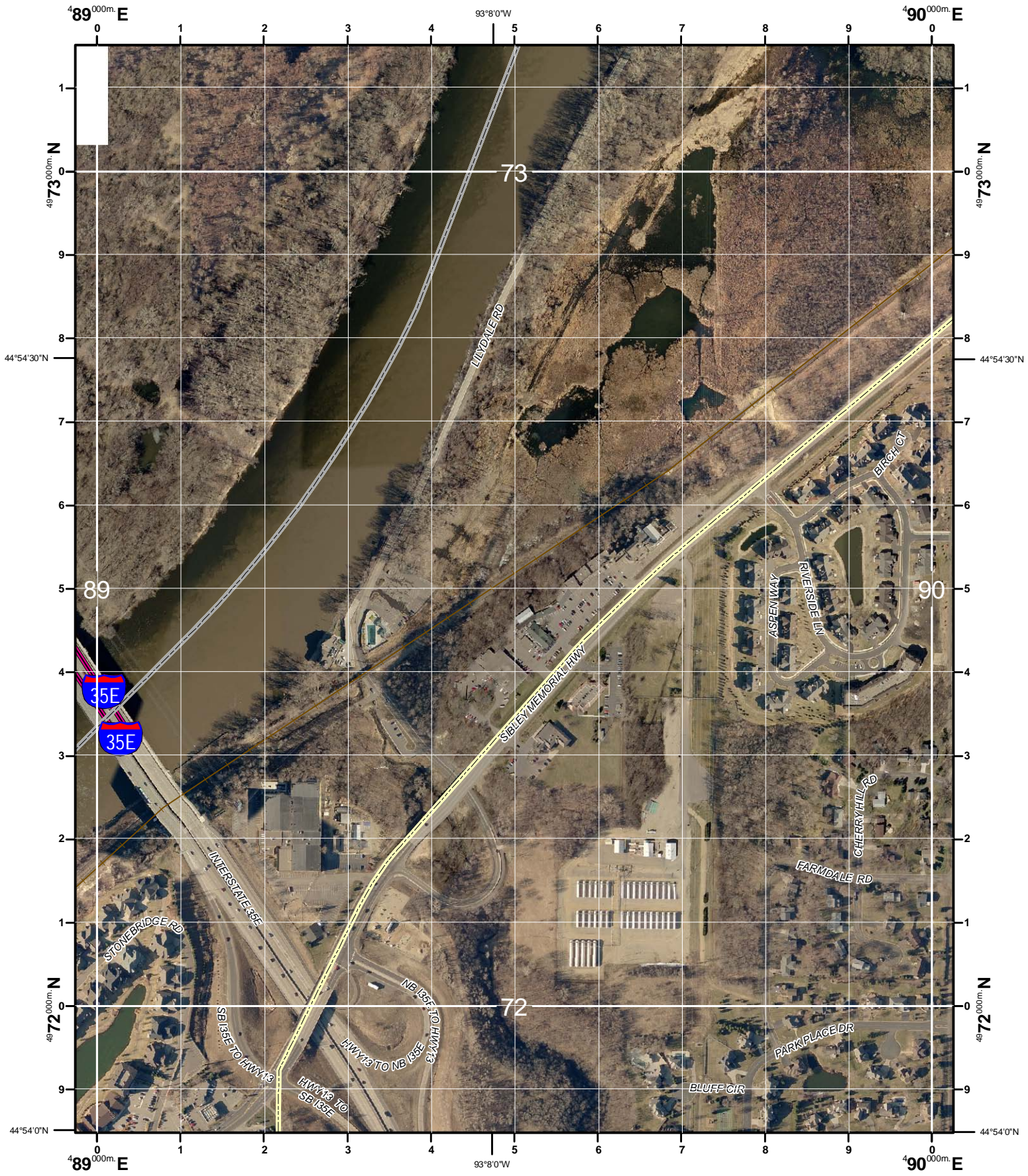
U.S. National Grid
100,000-m Square ID
VK
Grid Zone Designator
15T

8872	8972	9072
8871		9071
8870	8970	9070



8971

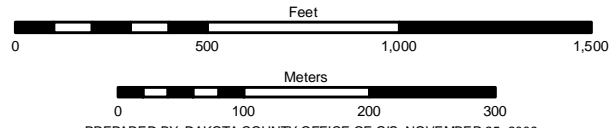




1000-m GRID, US NATIONAL GRID  
 NORTH AMERICAN DATUM 1983  
 GRID ZONE DESIGNATION 15T  
 100,000-m SQUARE IDENTIFICATION: VK

U.S. National Grid
100,000-m Square ID
VK
Grid Zone Designator
15T

Scale: 1 inch = 500 feet (print size 8.5"x11")

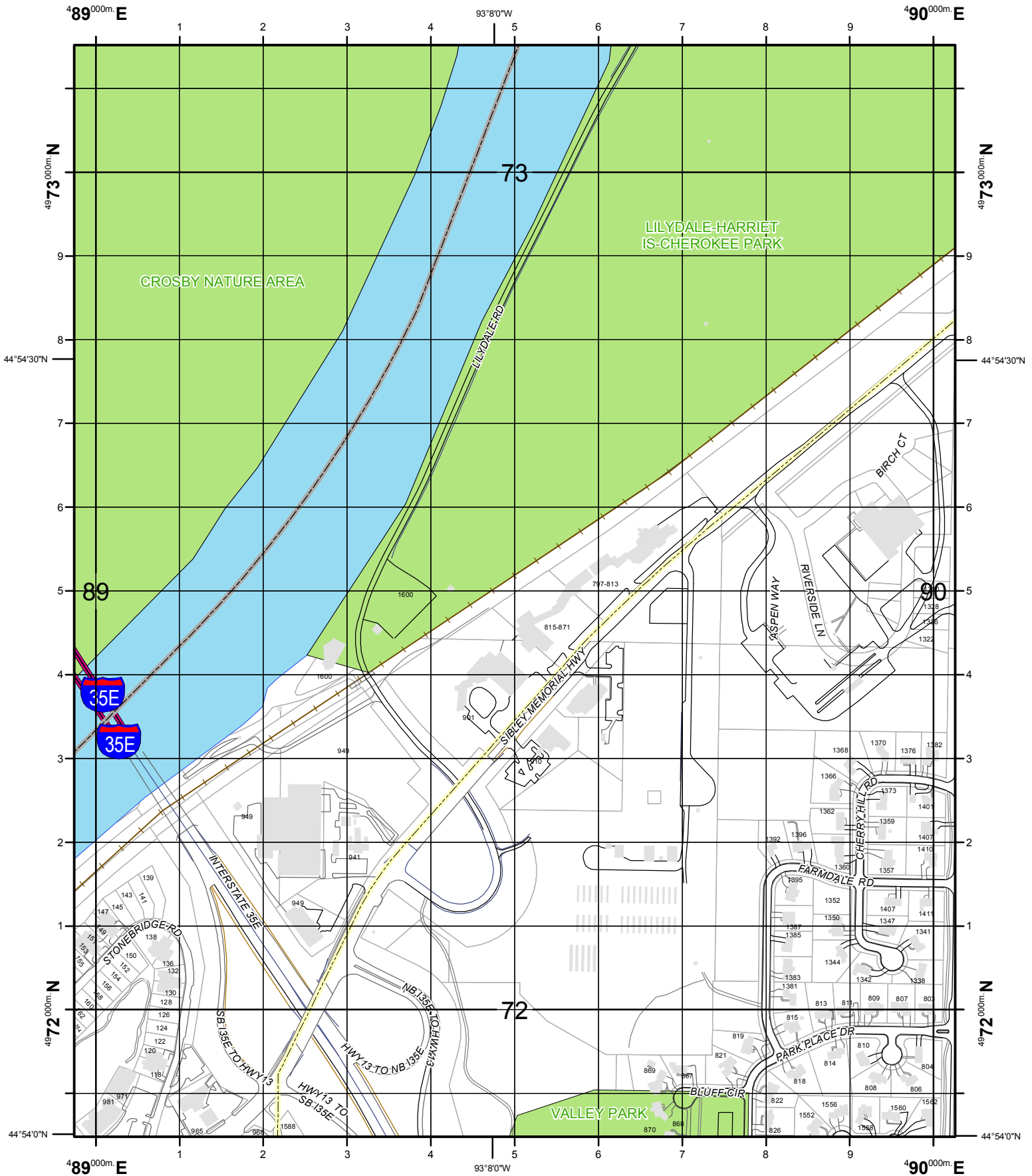


PREPARED BY: DAKOTA COUNTY OFFICE OF GIS, NOVEMBER 25, 2009  
 CORRECTIONS AND ADDITIONS SHOULD BE BROUGHT TO THE ATTENTION OF THE ABOVE ORGANIZATION  
 PHONE : (952) 891-7081  
 This map was created using the FGDC Standard for the U.S. National Grid  
 FGDC-STD-011-2001

For additional information  
 see <http://www.fgdc.gov/usng>

8873	8973	9073
8872	<b>8972</b>	9072
8871	8971	9071

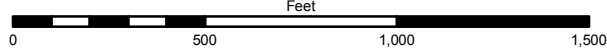




1000-m GRID, US NATIONAL GRID  
 NORTH AMERICAN DATUM 1983  
 GRID ZONE DESIGNATION 15T  
 100,000-m SQUARE IDENTIFICATION: VK

U.S. National Grid
100,000-m Square ID
VK
Grid Zone Designator
15T

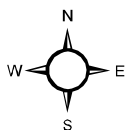
Scale: 1 inch = 500 feet (print size 8.5"x11")



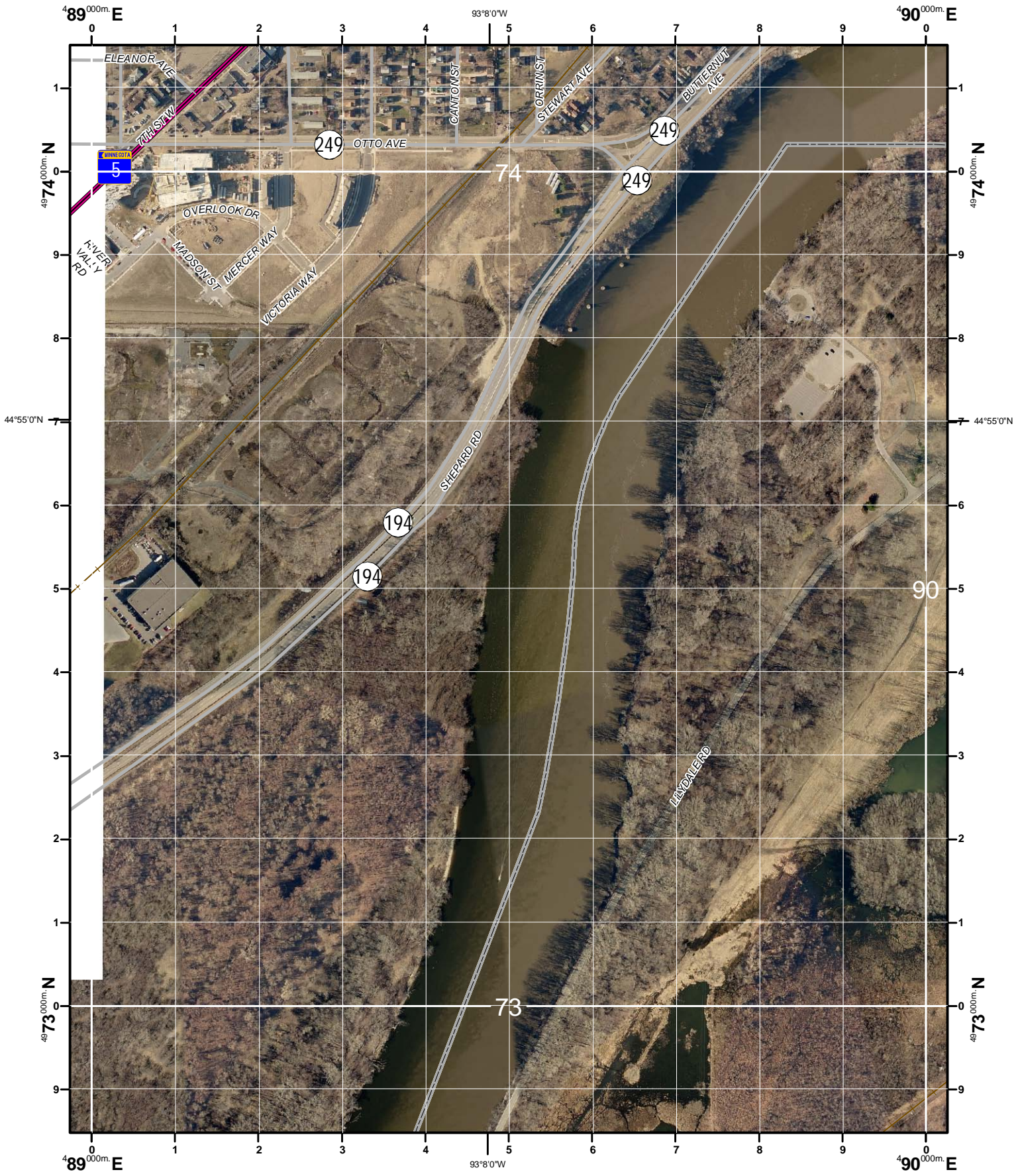
PREPARED BY: DAKOTA COUNTY OFFICE OF GIS, MARCH 3, 2009  
 CORRECTIONS AND ADDITIONS SHOULD BE BROUGHT TO THE ATTENTION OF THE ABOVE ORGANIZATION  
 PHONE : (952) 891-7081  
 This map was created using the FGDC Standard for the U.S. National Grid  
 FGDC-STD-011-2001

For additional information  
 see <http://www.fgdc.gov/usng>

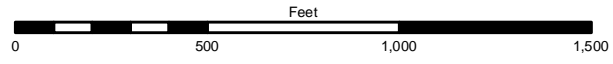
	8973	9073
8872		9072
8871	8971	9071



8972



Scale: 1 inch = 500 feet (print size 8.5"x11")



1000-m GRID, US NATIONAL GRID  
 NORTH AMERICAN DATUM 1983  
 GRID ZONE DESIGNATION 15T  
 100,000-m SQUARE IDENTIFICATION: VK

U.S. National Grid
100,000-m Square ID
VK
Grid Zone Designator
15T

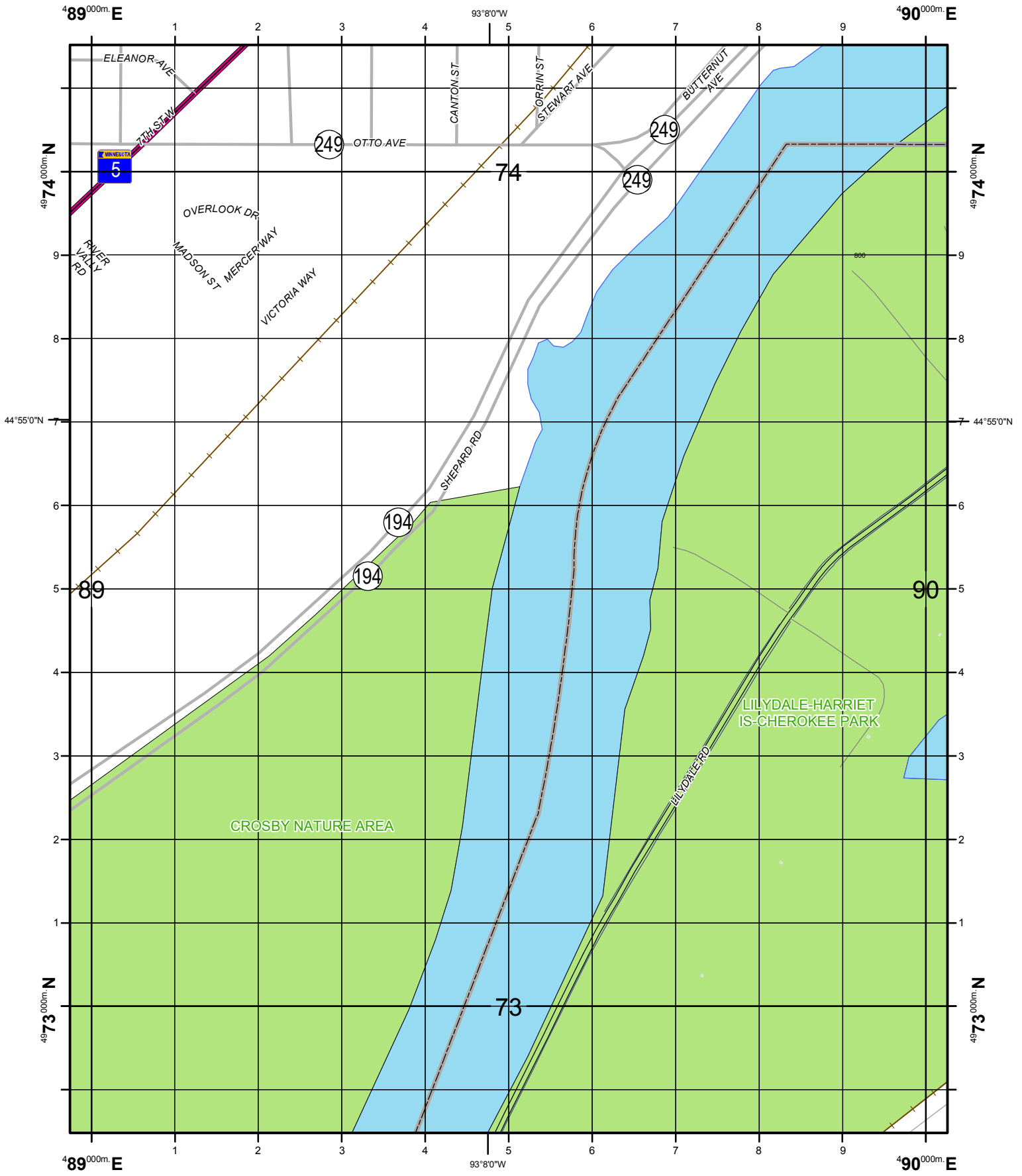
PREPARED BY: DAKOTA COUNTY OFFICE OF GIS, NOVEMBER 25, 2009  
 CORRECTIONS AND ADDITIONS SHOULD BE BROUGHT TO THE ATTENTION OF THE ABOVE ORGANIZATION  
 PHONE : (952) 891-7081  
 This map was created using the FGDC Standard for the U.S. National Grid  
 FGDC-STD-011-2001

For additional information  
 see <http://www.fgdc.gov/usng>

8874	8974	9074
8873	8973	9073
8872	8972	9072

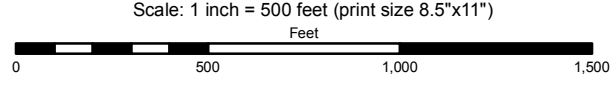


8973



1000-m GRID, US NATIONAL GRID  
 NORTH AMERICAN DATUM 1983  
 GRID ZONE DESIGNATION 15T  
 100,000-m SQUARE IDENTIFICATION: VK

U.S. National Grid
100,000-m Square ID
VK
Grid Zone Designator
15T



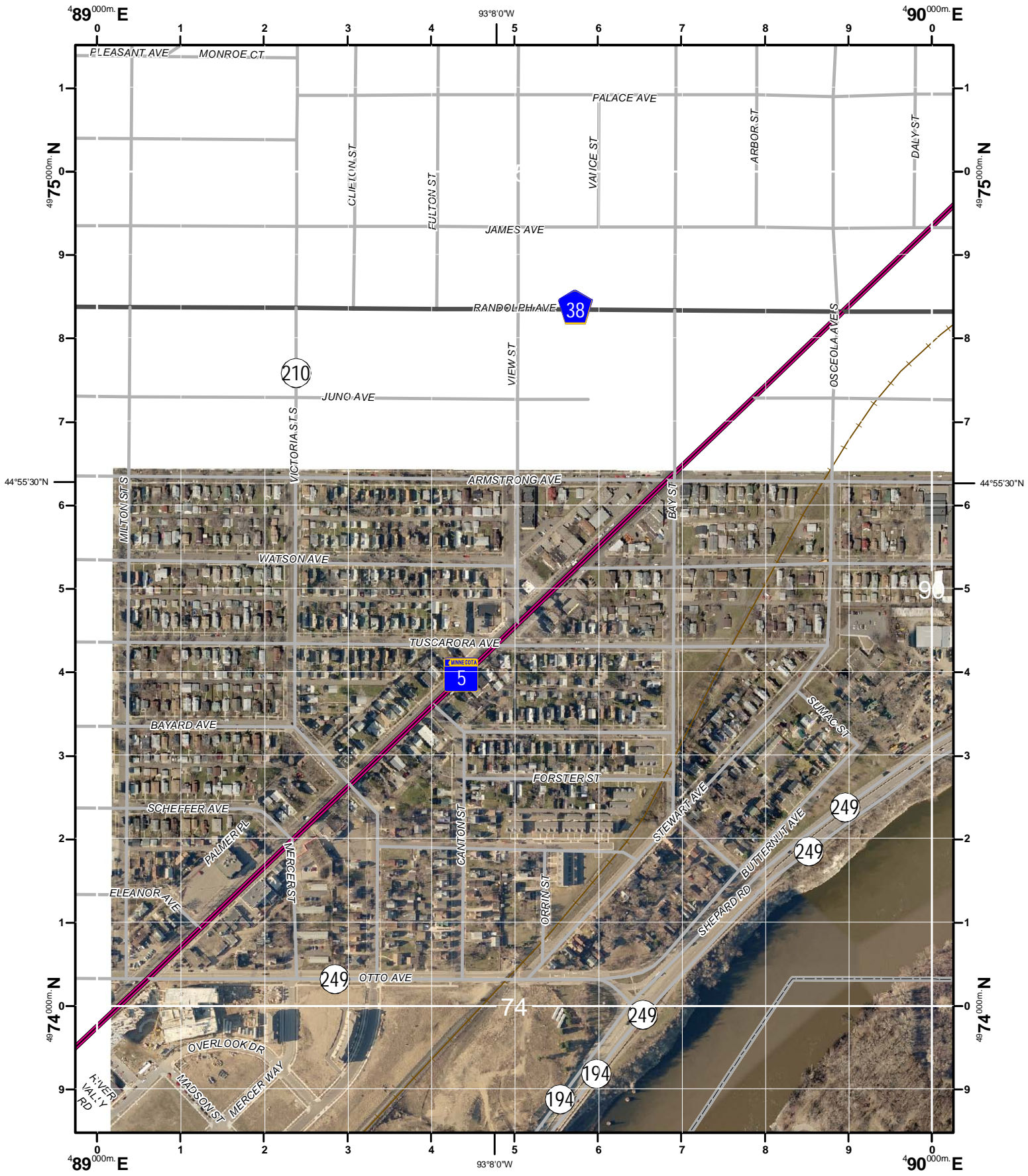
PREPARED BY: DAKOTA COUNTY OFFICE OF GIS, MARCH 3, 2009  
 CORRECTIONS AND ADDITIONS SHOULD BE BROUGHT TO THE ATTENTION OF THE ABOVE ORGANIZATION  
 PHONE : (952) 891-7081  
 This map was created using the FGDC Standard for the U.S. National Grid  
 FGDC-STD-011-2001

8974	9074
	9073
8872	8972
8972	9072

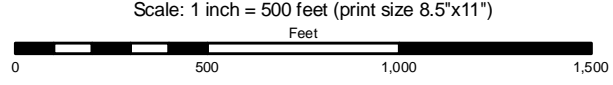


8973

For additional information  
 see <http://www.fgdc.gov/usng>



1000-m GRID, US NATIONAL GRID  
 NORTH AMERICAN DATUM 1983  
 GRID ZONE DESIGNATION 15T  
 100,000-m SQUARE IDENTIFICATION: VK



8875	8975	9075
8874	8974	9074
8873	8973	9073

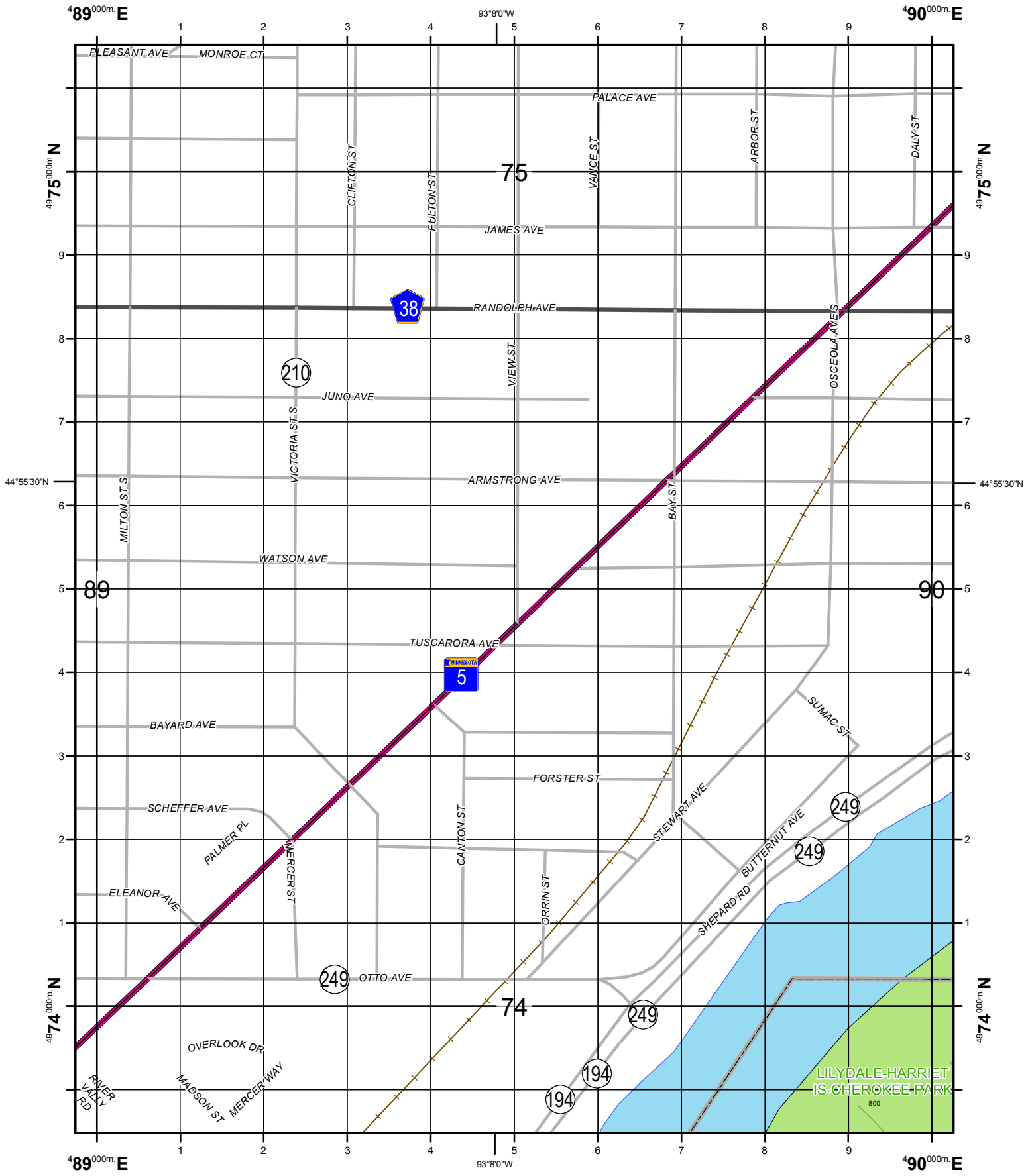


PREPARED BY: DAKOTA COUNTY OFFICE OF GIS, NOVEMBER 25, 2009  
 CORRECTIONS AND ADDITIONS SHOULD BE BROUGHT TO THE ATTENTION OF THE ABOVE ORGANIZATION  
 PHONE : (952) 891-7081  
 This map was created using the FGDC Standard for the U.S. National Grid  
 FGDC-STD-011-2001

For additional information  
 see <http://www.fgdc.gov/usng>

U.S. National Grid
100,000-m Square ID
VK
Grid Zone Designator
15T

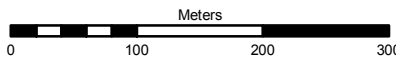
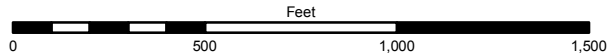




1000-m GRID, US NATIONAL GRID  
 NORTH AMERICAN DATUM 1983  
 GRID ZONE DESIGNATION 15T  
 100,000-m SQUARE IDENTIFICATION: VK

U.S. National Grid
100,000-m Square ID
VK
Grid Zone Designator
15T

Scale: 1 inch = 500 feet (print size 8.5"x11")

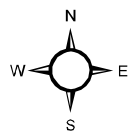


PREPARED BY: DAKOTA COUNTY OFFICE OF GIS, MARCH 3, 2009  
 CORRECTIONS AND ADDITIONS SHOULD BE BROUGHT TO THE ATTENTION OF THE ABOVE ORGANIZATION  
 PHONE : (952) 891-7081

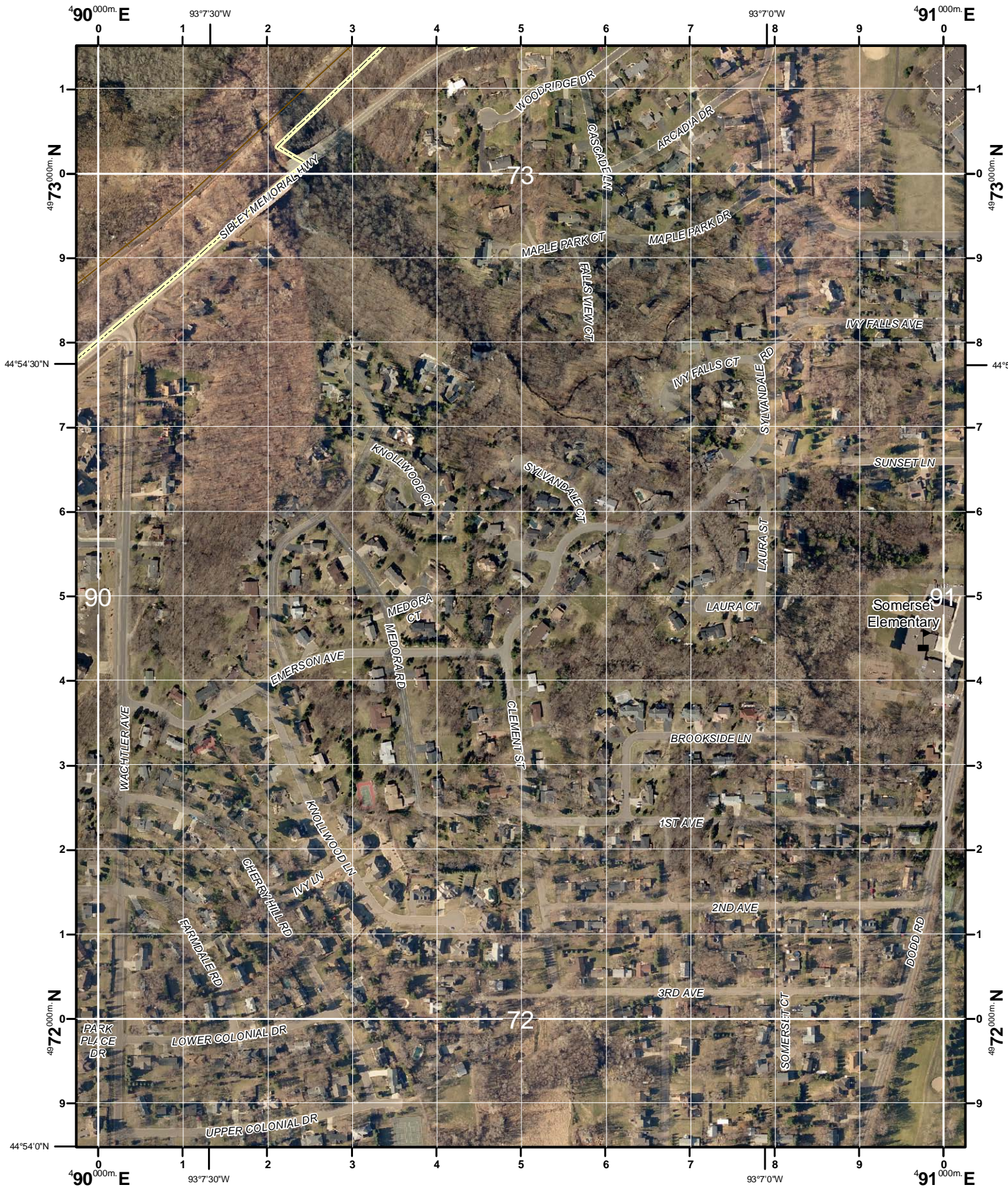
This map was created using the FGDC Standard for the U.S. National Grid  
 FGDC-STD-011-2001

For additional information  
 see <http://www.fgdc.gov/usng>

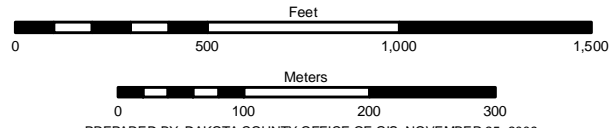
	9074
8973	9073



8974



Scale: 1 inch = 500 feet (print size 8.5"x11")



1000-m GRID, US NATIONAL GRID  
 NORTH AMERICAN DATUM 1983  
 GRID ZONE DESIGNATION 15T  
 100,000-m SQUARE IDENTIFICATION: VK

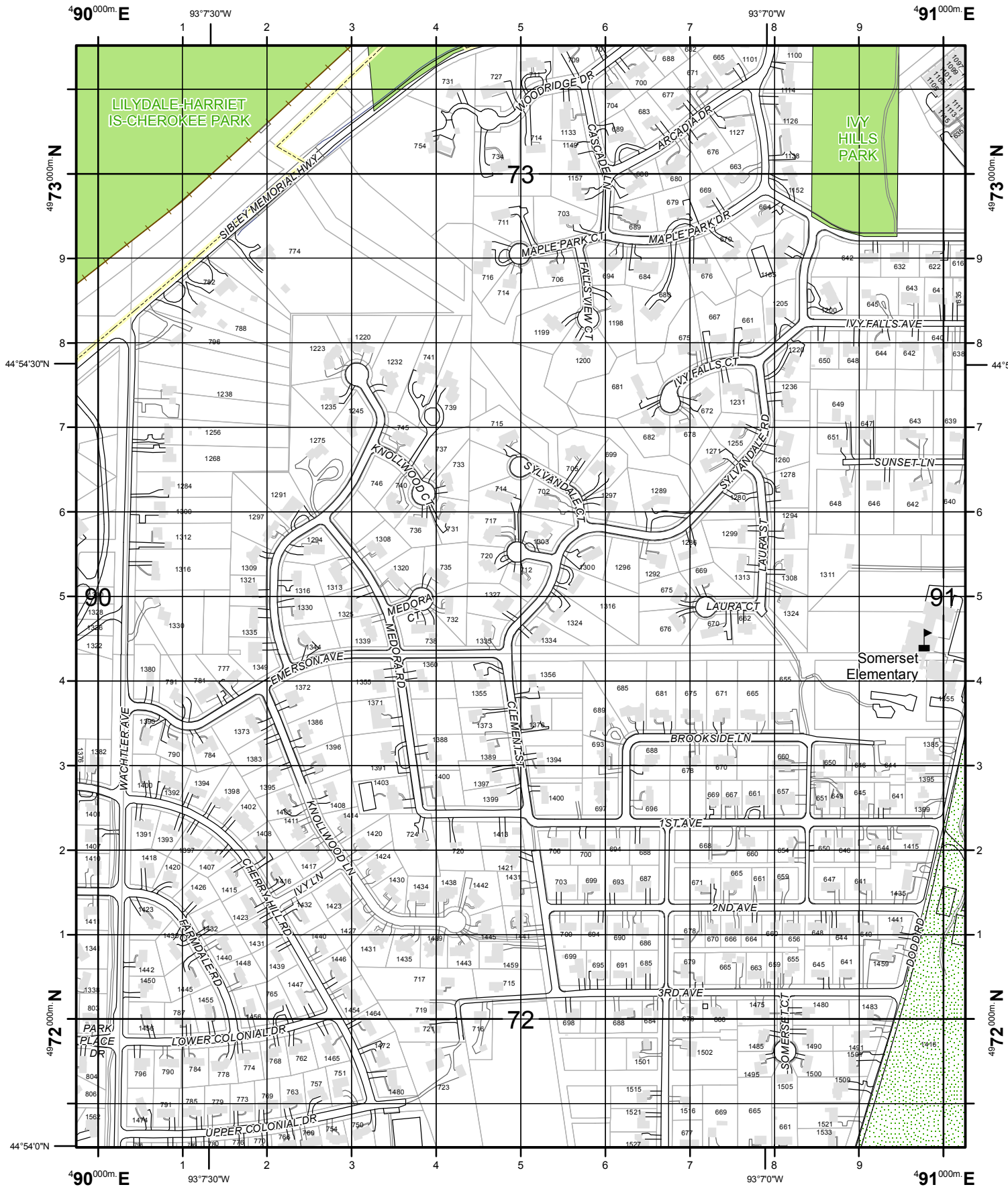
U.S. National Grid
100,000-m Square ID
VK
Grid Zone Designator
15T

PREPARED BY: DAKOTA COUNTY OFFICE OF GIS, NOVEMBER 25, 2009  
 CORRECTIONS AND ADDITIONS SHOULD BE BROUGHT TO THE ATTENTION OF THE ABOVE ORGANIZATION  
 PHONE : (952) 891-7081  
 This map was created using the FGDC Standard for the U.S. National Grid  
 FGDC-STD-011-2001

8973	9073	9173
8972	<b>9072</b>	9172
8971	9071	9171

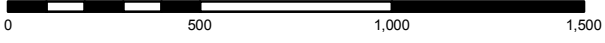


For additional information  
 see <http://www.fgdc.gov/usng>



1000-m GRID, US NATIONAL GRID  
 NORTH AMERICAN DATUM 1983  
 GRID ZONE DESIGNATION 15T  
 100,000-m SQUARE IDENTIFICATION: VK

Scale: 1 inch = 500 feet (print size 8.5"x11")



U.S. National Grid
100,000-m Square ID
VK
Grid Zone Designator
15T

PREPARED BY: DAKOTA COUNTY OFFICE OF GIS, MARCH 3, 2009  
 CORRECTIONS AND ADDITIONS SHOULD BE BROUGHT TO THE ATTENTION OF THE ABOVE ORGANIZATION  
 PHONE : (562) 891-7081  
 This map was created using the FGDC Standard for the U.S. National Grid  
 FGDC-STD-011-2001

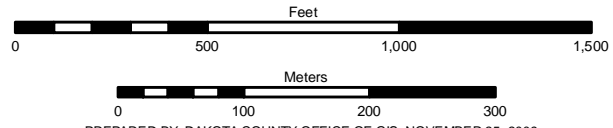
For additional information  
 see <http://www.fgdc.gov/usng>

8973	9073	9173
8972		9172
8971	9071	9171





Scale: 1 inch = 500 feet (print size 8.5"x11")



1000-m GRID, US NATIONAL GRID  
 NORTH AMERICAN DATUM 1983  
 GRID ZONE DESIGNATION 15T  
 100,000-m SQUARE IDENTIFICATION: VK

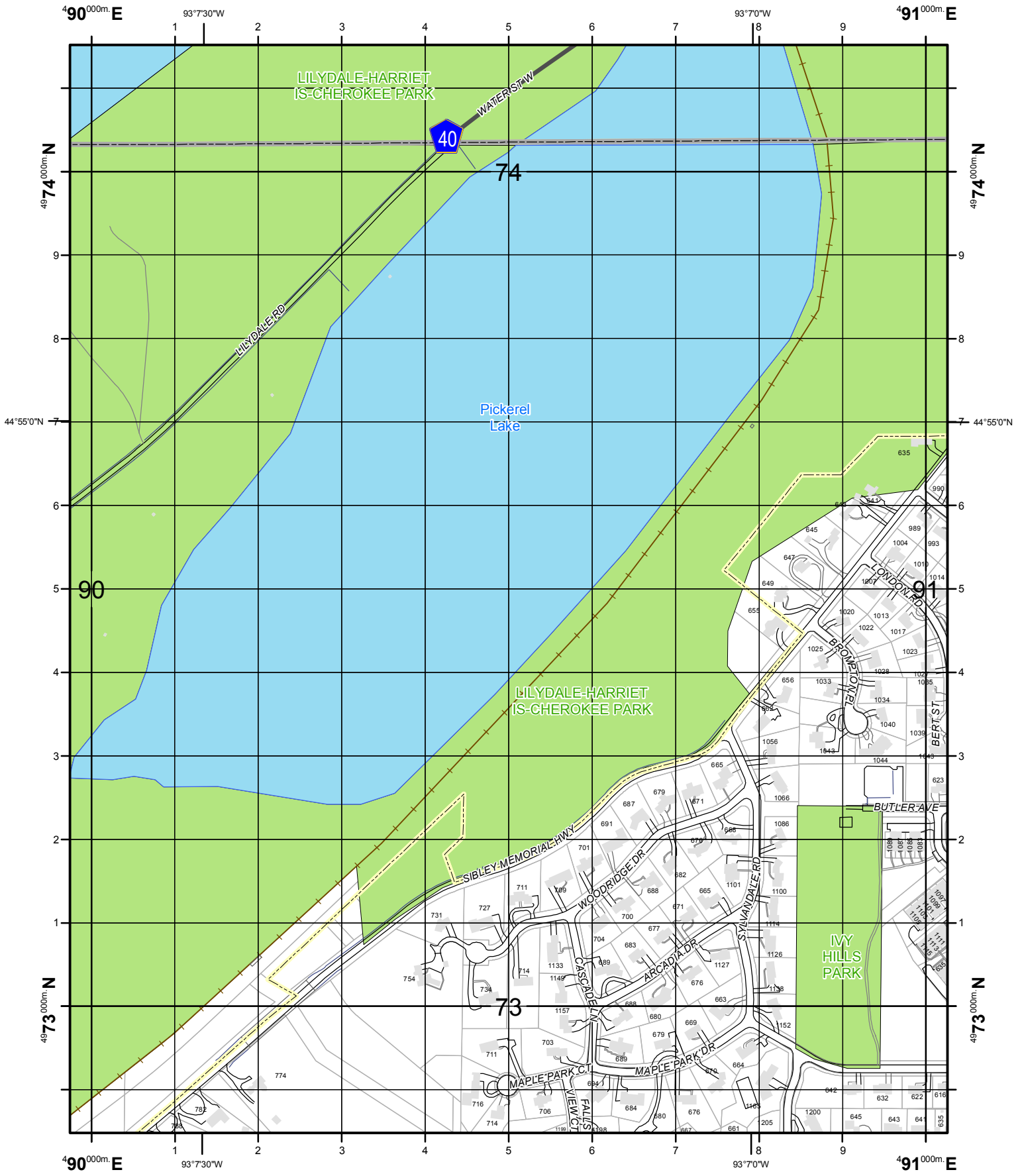
U.S. National Grid
100,000-m Square ID
VK
Grid Zone Designator
15T

PREPARED BY: DAKOTA COUNTY OFFICE OF GIS, NOVEMBER 25, 2009  
 CORRECTIONS AND ADDITIONS SHOULD BE BROUGHT TO THE ATTENTION OF THE ABOVE ORGANIZATION  
 PHONE : (952) 891-7081  
 This map was created using the FGDC Standard for the U.S. National Grid  
 FGDC-STD-011-2001

8974	9074	9174
8973	<b>9073</b>	9173
8972	9072	9172

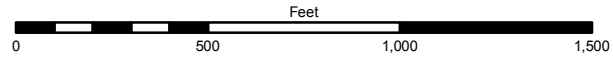


For additional information  
 see <http://www.fgdc.gov/usng>



1000-m GRID, US NATIONAL GRID  
 NORTH AMERICAN DATUM 1983  
 GRID ZONE DESIGNATION 15T  
 100,000-m SQUARE IDENTIFICATION: VK

Scale: 1 inch = 500 feet (print size 8.5"x11")



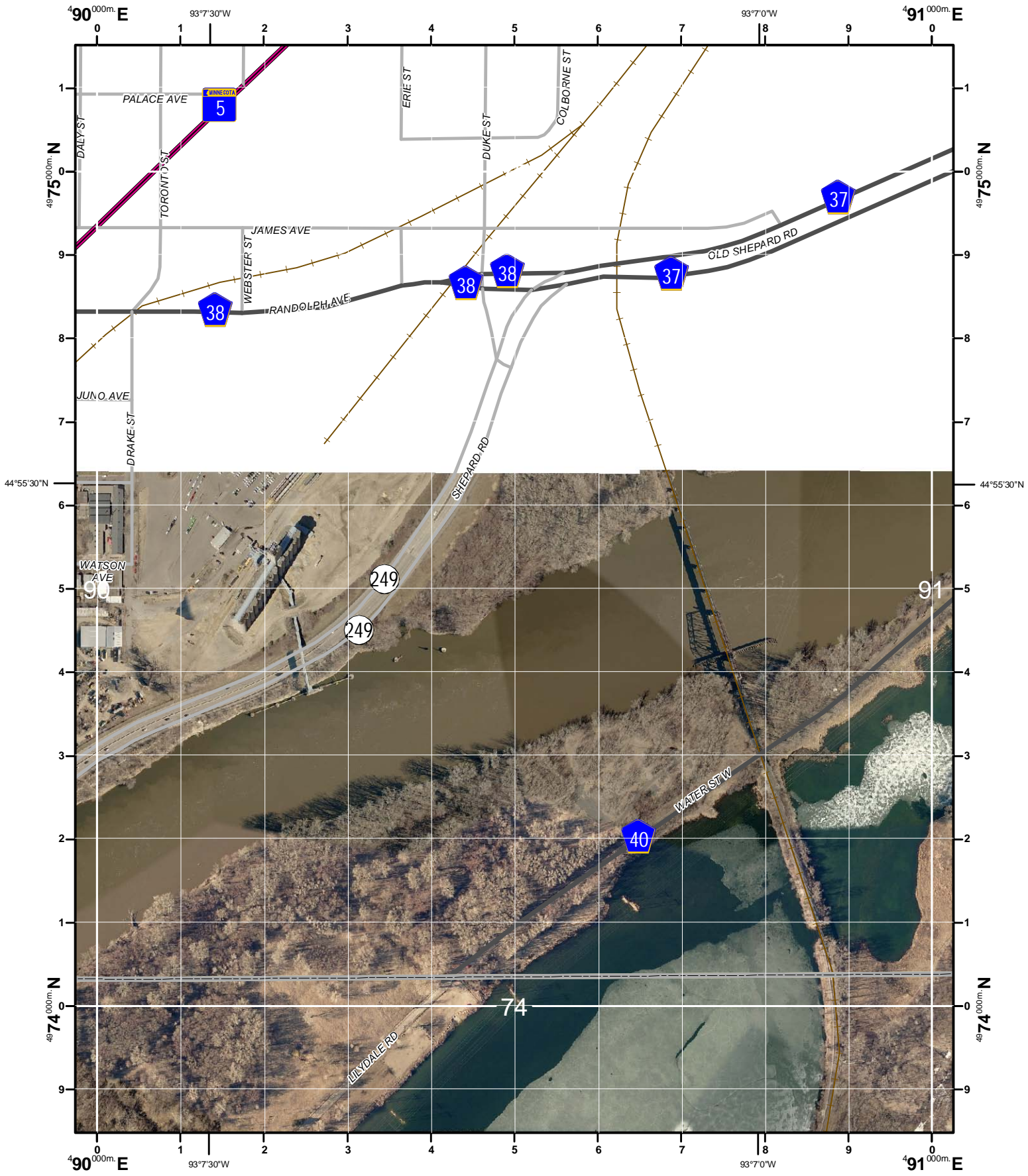
U.S. National Grid
100,000-m Square ID
VK
Grid Zone Designator
15T

PREPARED BY: DAKOTA COUNTY OFFICE OF GIS, MARCH 3, 2009  
 CORRECTIONS AND ADDITIONS SHOULD BE BROUGHT TO THE ATTENTION OF THE ABOVE ORGANIZATION  
 PHONE : (952) 891-7081  
 This map was created using the FGDC Standard for the U.S. National Grid  
 FGDC-STD-011-2001

For additional information  
 see <http://www.fgdc.gov/usng>

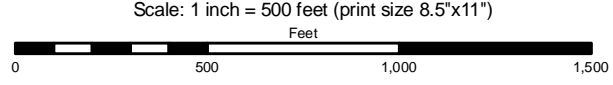
8974	9074	9174
8973		9173
8972	9072	9172





1000-m GRID, US NATIONAL GRID  
 NORTH AMERICAN DATUM 1983  
 GRID ZONE DESIGNATION 15T  
 100,000-m SQUARE IDENTIFICATION: VK

U.S. National Grid
100,000-m Square ID
VK
Grid Zone Designator
15T

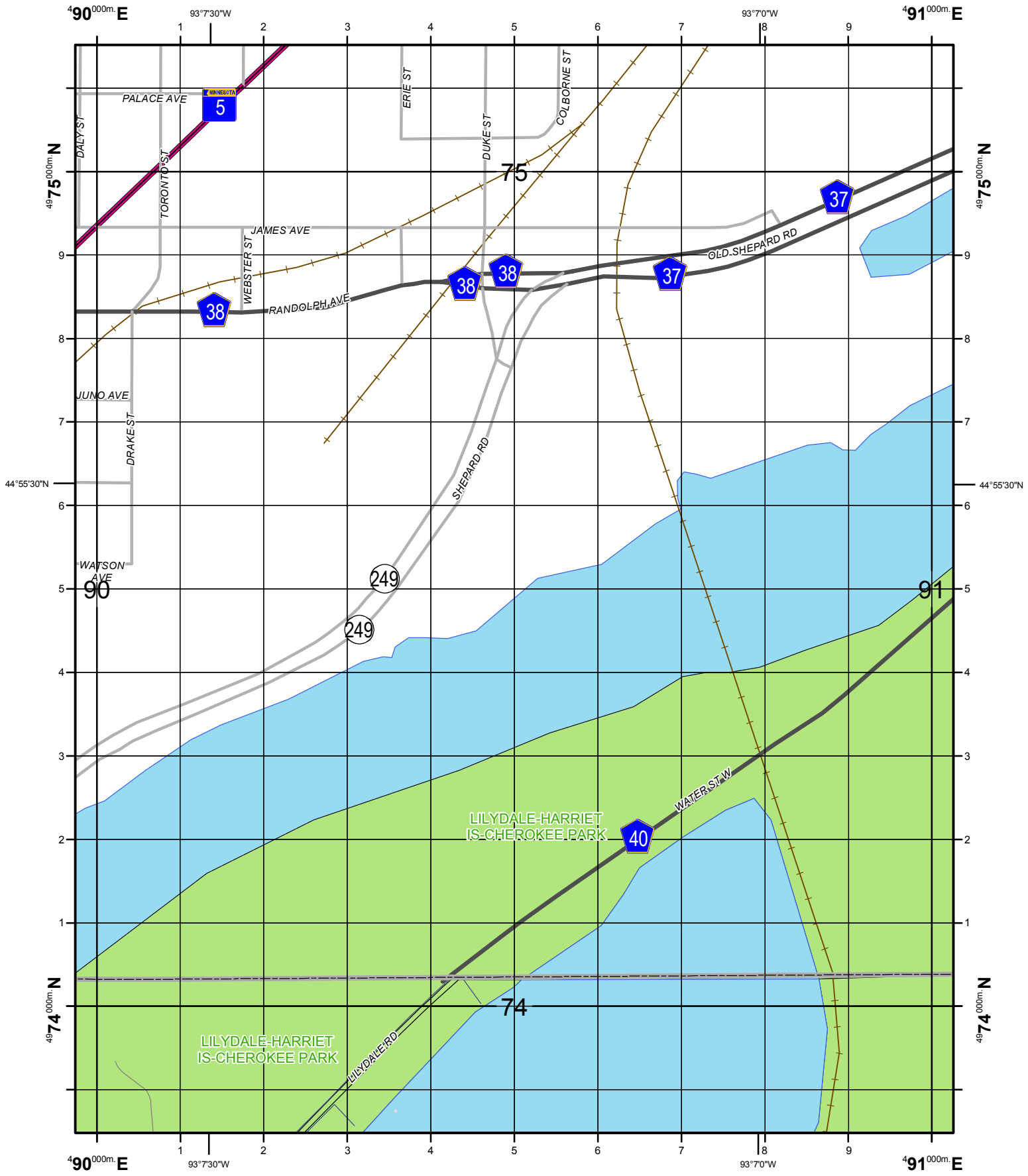


PREPARED BY: DAKOTA COUNTY OFFICE OF GIS, NOVEMBER 25, 2009  
 CORRECTIONS AND ADDITIONS SHOULD BE BROUGHT TO THE ATTENTION OF THE ABOVE ORGANIZATION  
 PHONE : (952) 891-7081  
 This map was created using the FGDC Standard for the U.S. National Grid  
 FGDC-STD-011-2001

8975	9075	9175
8974	<b>9074</b>	9174
8973	9073	9173



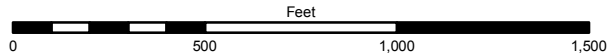
For additional information  
 see <http://www.fgdc.gov/usng>



1000-m GRID, US NATIONAL GRID  
 NORTH AMERICAN DATUM 1983  
 GRID ZONE DESIGNATION 15T  
 100,000-m SQUARE IDENTIFICATION: VK

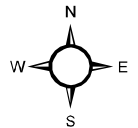
U.S. National Grid
100,000-m Square ID
VK
Grid Zone Designator
15T

Scale: 1 inch = 500 feet (print size 8.5"x11")



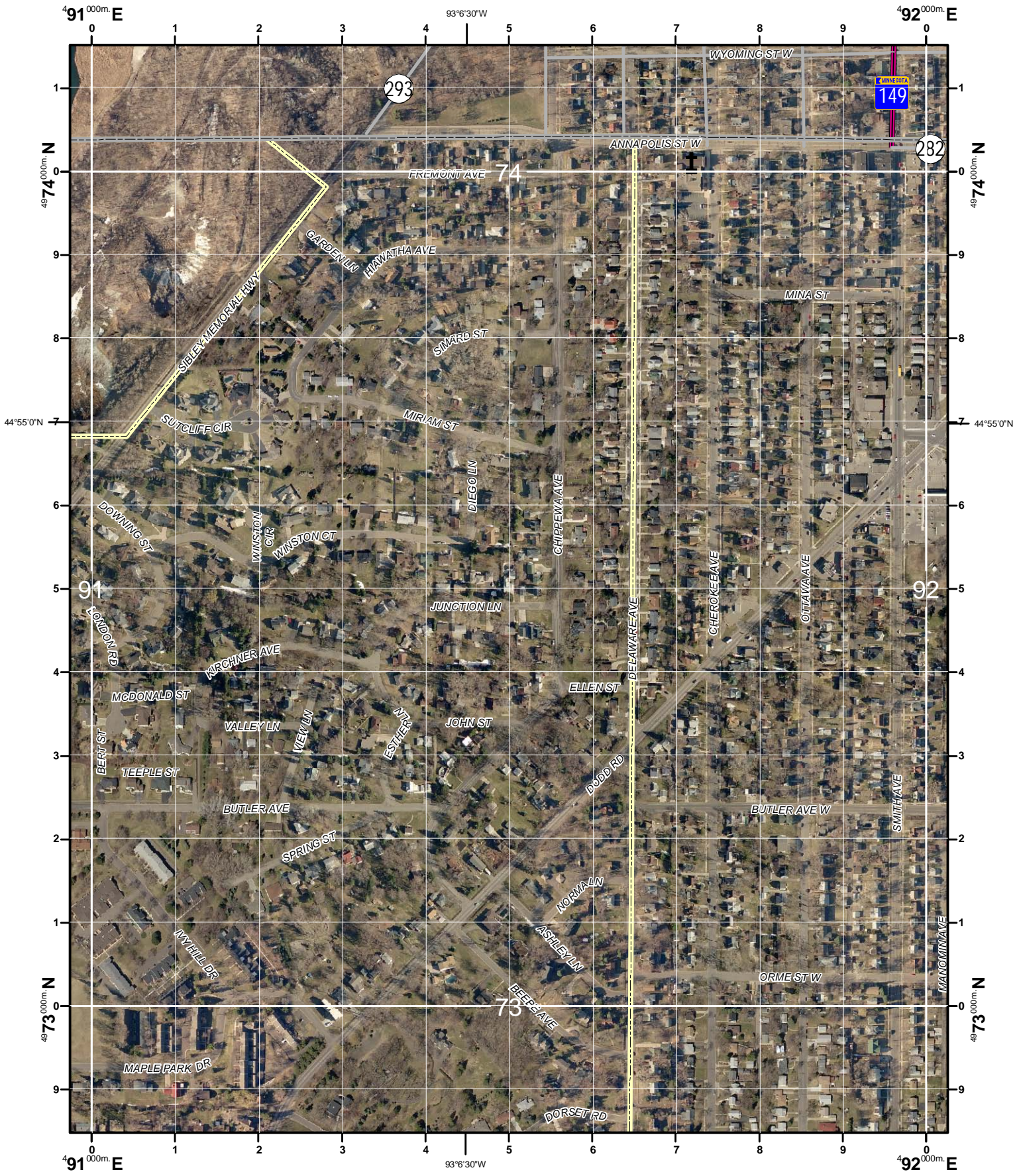
PREPARED BY: DAKOTA COUNTY OFFICE OF GIS, MARCH 3, 2009  
 CORRECTIONS AND ADDITIONS SHOULD BE BROUGHT TO THE ATTENTION OF THE ABOVE ORGANIZATION  
 PHONE : (952) 891-7081  
 This map was created using the FGDC Standard for the U.S. National Grid  
 FGDC-STD-011-2001

8974		9174
8973	9073	9173
8972	9072	9172



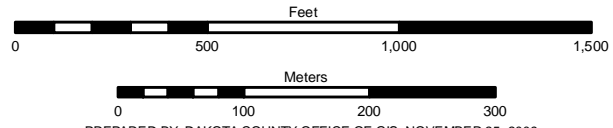
9074

For additional information  
 see <http://www.fgdc.gov/usng>



1000-m GRID, US NATIONAL GRID  
 NORTH AMERICAN DATUM 1983  
 GRID ZONE DESIGNATION 15T  
 100,000-m SQUARE IDENTIFICATION: VK

Scale: 1 inch = 500 feet (print size 8.5"x11")



U.S. National Grid
100,000-m Square ID
VK
Grid Zone Designator
15T

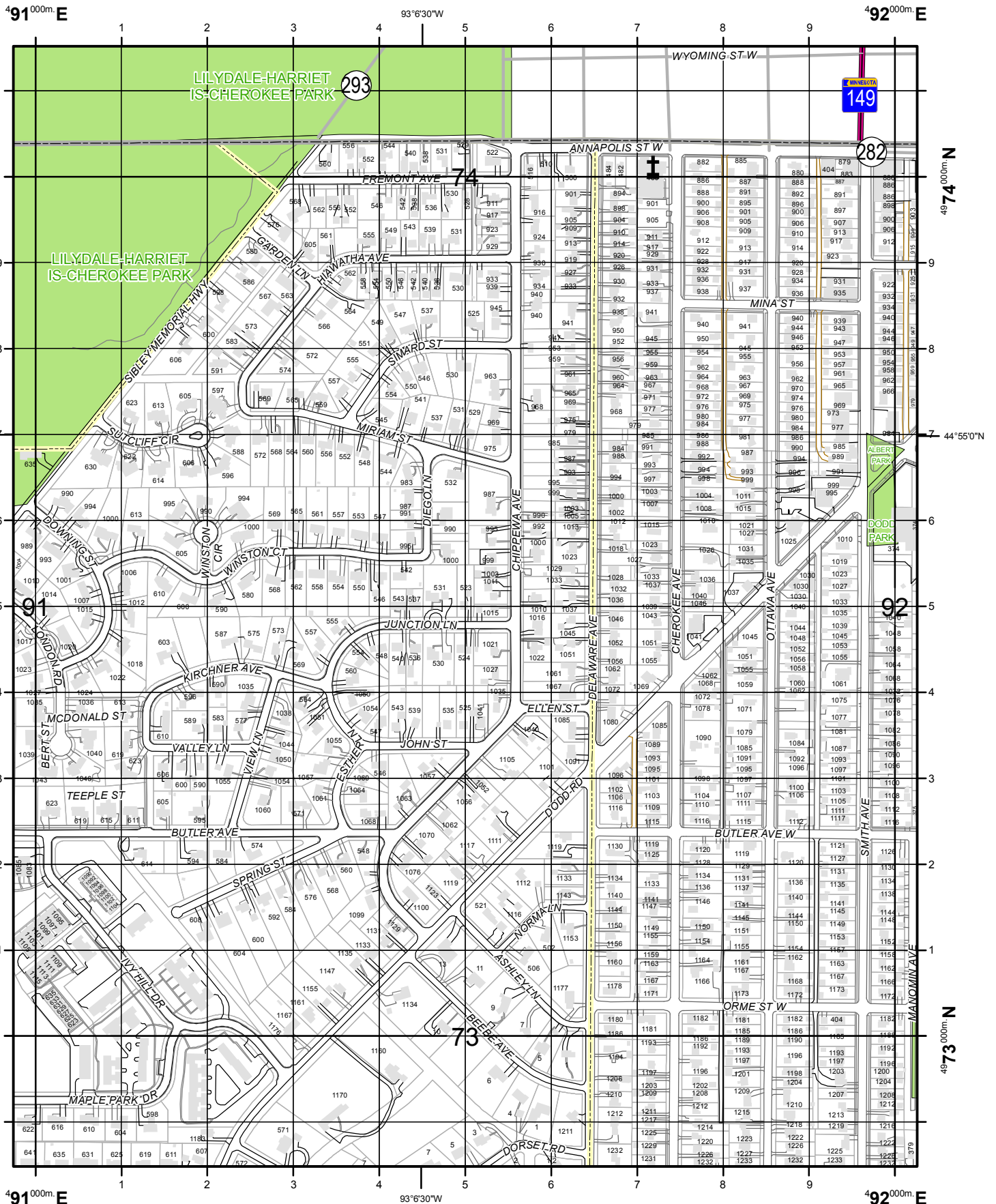
PREPARED BY: DAKOTA COUNTY OFFICE OF GIS, NOVEMBER 25, 2009  
 CORRECTIONS AND ADDITIONS SHOULD BE BROUGHT TO THE ATTENTION OF THE ABOVE ORGANIZATION  
 PHONE : (952) 891-7081  
 This map was created using the FGDC Standard for the U.S. National Grid  
 FGDC-STD-011-2001

For additional information  
 see <http://www.fgdc.gov/usng>

9074	9174	9274
9073	9173	9273
9072	9172	9272

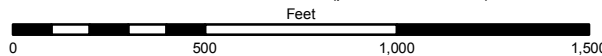






1000-m GRID, US NATIONAL GRID  
 NORTH AMERICAN DATUM 1983  
 GRID ZONE DESIGNATION 15T  
 100,000-m SQUARE IDENTIFICATION: VK

Scale: 1 inch = 500 feet (print size 8.5"x11")

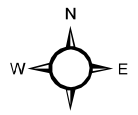


U.S. National Grid
100,000-m Square ID
VK
Grid Zone Designator
15T

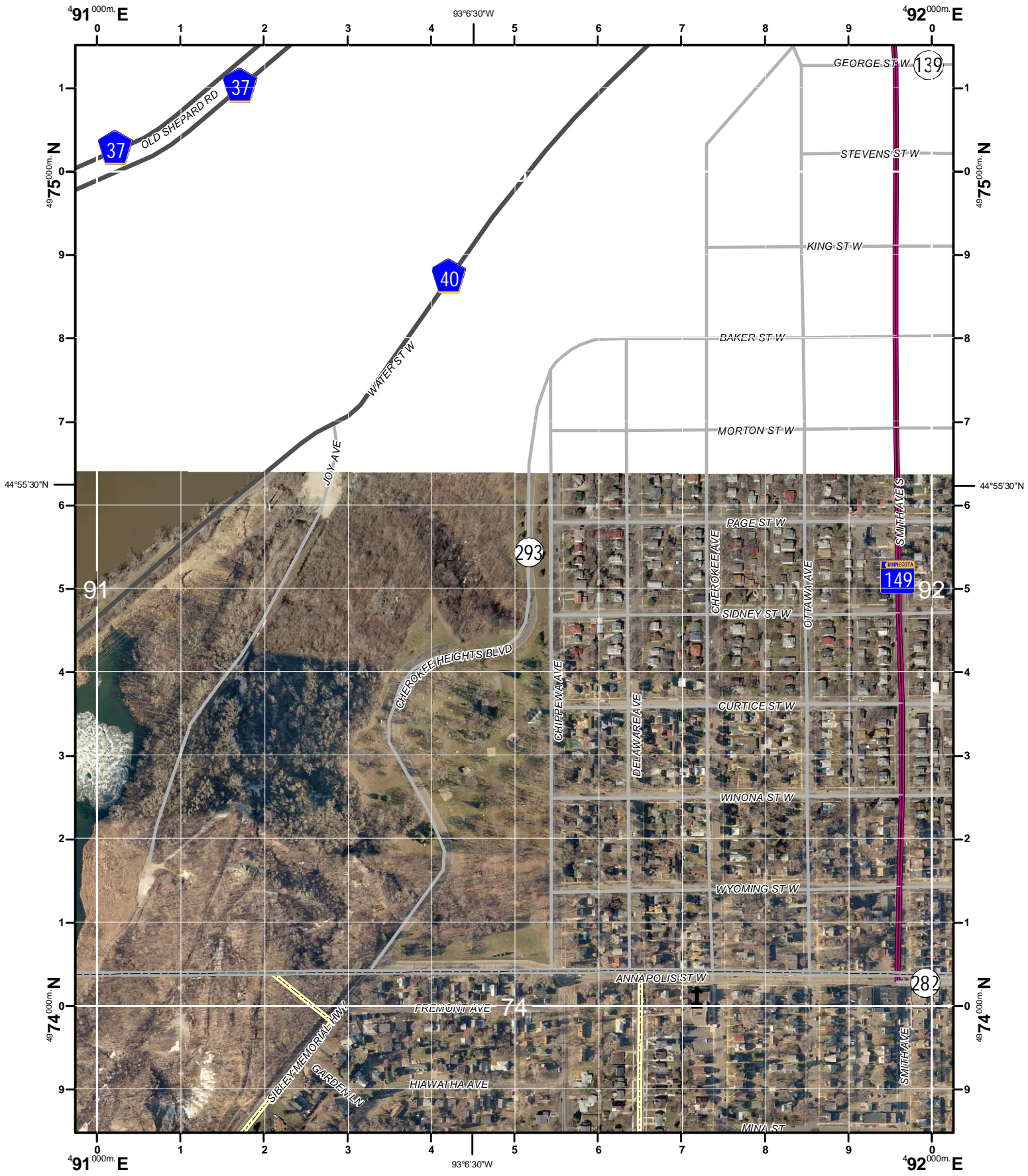
PREPARED BY: DAKOTA COUNTY OFFICE OF GIS, MARCH 3, 2009  
 CORRECTIONS AND ADDITIONS SHOULD BE BROUGHT TO THE ATTENTION OF THE ABOVE ORGANIZATION  
 PHONE : (952) 891-7081  
 This map was created using the FGDC Standard for the U.S. National Grid  
 FGDC-STD-011-2001

For additional information  
 see <http://www.fgdc.gov/usng>

9074	9174	9274
9073		9273
9072	9172	9272

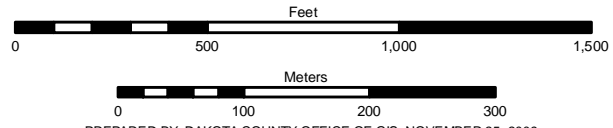


9173



1000-m GRID, US NATIONAL GRID  
 NORTH AMERICAN DATUM 1983  
 GRID ZONE DESIGNATION 15T  
 100,000-m SQUARE IDENTIFICATION: VK

Scale: 1 inch = 500 feet (print size 8.5"x11")



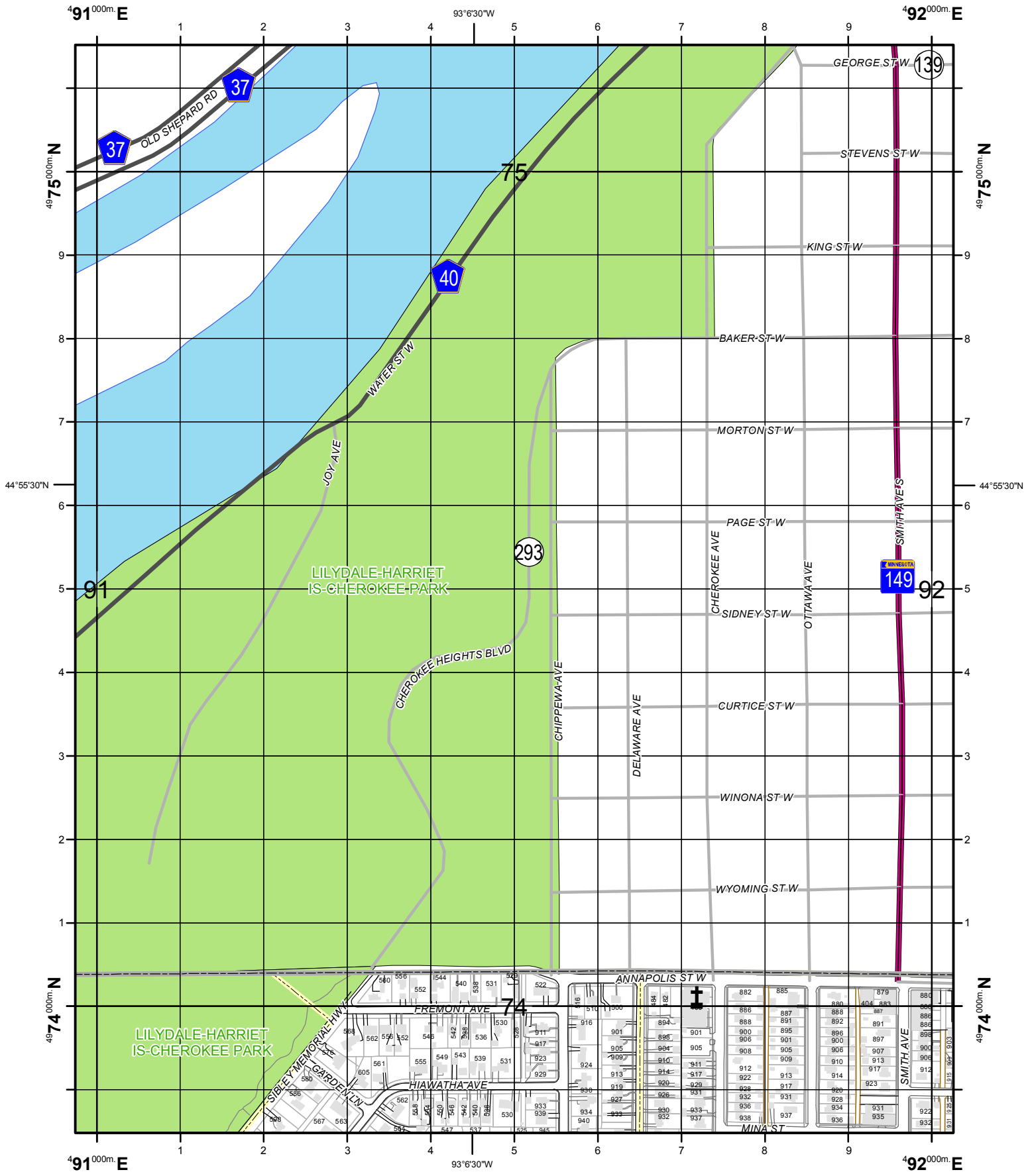
U.S. National Grid
100,000-m Square ID
VK
Grid Zone Designator
15T

PREPARED BY: DAKOTA COUNTY OFFICE OF GIS, NOVEMBER 25, 2009  
 CORRECTIONS AND ADDITIONS SHOULD BE BROUGHT TO THE ATTENTION OF THE ABOVE ORGANIZATION  
 PHONE : (952) 891-7081  
 This map was created using the FGDC Standard for the U.S. National Grid  
 FGDC-STD-011-2001

For additional information  
 see <http://www.fgdc.gov/usng>

9075	9175	9275
9074	9174	9274
9073	9173	9273

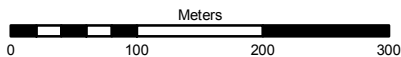
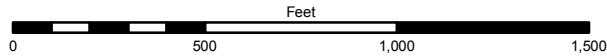




1000-m GRID, US NATIONAL GRID  
 NORTH AMERICAN DATUM 1983  
 GRID ZONE DESIGNATION 15T  
 100,000-m SQUARE IDENTIFICATION: VK

U.S. National Grid
100,000-m Square ID
VK
Grid Zone Designator
15T

Scale: 1 inch = 500 feet (print size 8.5"x11")

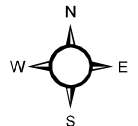


PREPARED BY: DAKOTA COUNTY OFFICE OF GIS, MARCH 3, 2009  
 CORRECTIONS AND ADDITIONS SHOULD BE BROUGHT TO THE ATTENTION OF THE ABOVE ORGANIZATION  
 PHONE : (952) 891-7081

This map was created using the FGDC Standard for the U.S. National Grid  
 FGDC-STD-011-2001

For additional information  
 see <http://www.fgdc.gov/usng>

9074		9274
9073	9173	9273
9072	9172	9272



9174

Lilydale Street Index

Street Name: USNG Page #

**#**

1ST AVE: 9072  
2ND AVE: 9072  
3RD AVE: 9072  
7TH ST W: 8973, 8974, 9074

**A**

ADELINE CT: 8971  
ALTON ST: 8771  
ANNAPOLIS ST W: 9174  
ARBOR ST: 8974  
ARCADIA DR: 9072, 9073  
ARMSTRONG AVE: 8974, 9074  
ASHLEY LN: 9173  
ASPEN WAY: 8972

**B**

BAKER ST W: 9174  
BARBARA CT: 8971  
BAY ST: 8974  
BAYARD AVE: 8974  
BEEBE AVE: 9173  
BENSON AVE: 8872  
BERNARD ST W: 9173  
BERT ST: 9173  
BIRCH CT: 8972  
BLUFF CIR: 8971  
BOARDWALK: 8971  
BROMPTON PL: 9073  
BROOKSIDE LN: 9072  
BUTLER AVE: 9073  
BUTLER AVE W: 9173  
BUTLER AVE: 9173  
BUTTERNUT AVE: 8974

**C**

CANTON ST: 8974  
CAREN CT: 8871, 8971  
CAREN RD: 8971  
CASCADE LN: 9072, 9073  
CELIA DR: 8971  
CHEROKEE AVE: 9173, 9174  
CHEROKEE HEIGHTS BLVD: 9174  
CHERRY HILL RD: 8972, 9072  
CHIPPEWA AVE: 9173, 9174  
CLEMENT ST: 9072  
CLIFTON ST: 8974  
COUNTRY DAY WAY: 8971  
CROSBY FARM RD: 8771  
CROSBY LAKE RD: 8872  
CURTICE ST W: 9174

**D**

DALY ST: 8974  
DEER TRAIL CT: 8971  
DEER TRAIL PT: 8971  
DELAWARE AVE: 9173, 9174

DEWERFF ST: 9173  
DIANE RD: 8971  
DIEGO LN: 9173  
DODD RD: 9072, 9173  
DOUGLAS CT: 8871  
DOUGLAS RD: 8871, 8971  
DOWNING ST: 9073, 9173  
DRAKE ST: 9074  
DUKE ST: 9074

**E**

ELEANOR AVE: 8974  
ELLEN ST: 9173  
ELWAY ST: 8872  
EMERSON AVE: 9072  
ERIE ST: 9074  
ESTHER LN: 9173

**F**

FALLS VIEW CT: 9072  
FARMDALE RD: 8971, 8972, 9072  
FORSTER ST: 8974  
FREMONT AVE: 9173  
FULTON ST: 8974

**G**

GARDEN LN: 9173  
GLEN TER: 8872

**H**

HIAWATHA AVE: 9173  
HWY13 TO NB I35E: 8971, 8972  
HWY13 TO SB I35E: 8971

**I**

INTERSTATE 35E: 8872, 8971, 8972  
IVAN WAY: 8872  
IVY FALLS AVE: 9072  
IVY FALLS CT: 9072  
IVY HILL DR: 9173  
IVY LN: 9072

**J**

JAMES AVE: 8974, 9074  
JAMES CT: 8871  
JAMES RD: 8871, 8971  
JOHN ST: 9173  
JOY AVE: 9174  
JUNCTION LN: 9173  
JUNO AVE: 8974, 9074

**K**

KING ST W: 9174  
KINGSLEY CIR N: 8871  
KIRCHNER AVE: 9173  
KNOLLWOOD CT: 9072  
KNOLLWOOD LN: 9072

# Lilydale Street Index

Street Name: USNG Page #

## L

LAURA CT: 9072  
LAURA ST: 9072  
LEXINGTON AVE: 8871  
LILAC LN: 8871, 8971  
LILAC RD: 8871  
LILYDALE RD: 8972, 8973, 9073, 9074  
LILYWOOD LN: 8871  
LONDON RD: 9073, 9173  
LOWER COLONIAL DR: 9072

## M

MADSON ST: 8973  
MAPLE PARK CT: 9072  
MAPLE PARK DR: 9072, 9173  
MAYFIELD HEIGHTS LN: 8871  
MAYFIELD HEIGHTS RD: 8871  
MCDONALD ST: 9173  
MEDORA CT: 9072  
MEDORA RD: 9072  
MERCER ST: 8974  
MERCER WAY: 8973, 8974  
MILTON ST S: 8974  
MINA ST: 9173  
MIRIAM ST: 9173  
MORTON ST W: 9174

## N

NB I35E TO HWY13: 8971, 8972  
NB I35E TO SHEPARD RD: 8872  
NINA CT: 8971  
NORMA LN: 9173

## O

OLD SHEPARD RD: 9074  
ORME ST W: 9173  
ORRIN ST: 8974  
OSCEOLA AVE S: 8974  
OTTAWA AVE: 9173, 9174  
OTTO AVE: 8973, 8974  
OVERLOOK DR: 8973

## P

PAGE ST W: 9174  
PALMER PL: 8974  
PARK CIR: 8971  
PARK PLACE DR: 8971  
PRIVATE RD: 8871

## R

RAE CT: 8971  
RANDOLPH AVE: 8974, 9074  
RIVER VALLY RD: 8973  
RIVERSIDE LN: 8972, 9072

## S

SB I35E TO HWY13: 8971, 8972  
SCHEFFER AVE: 8974  
SHEPARD RD: 8771  
SHEPARD RD TO SB I35E: 8872  
SHEPARD RD: 8872, 8973, 8974, 9074  
SIBLEY MEMORIAL HWY: 8771, 8871, 8971, 8972, 9072, 9073, 9173, 9174  
SIDNEY ST W: 9174  
SIMARD ST: 9173  
SMITH AVE: 9173  
SMITH AVE S: 9174  
SMITH AVE: 9174  
SOMERSET CT: 9072  
SPRING ST: 9173  
STEWART AVE: 8771, 8974  
STONEBRIDGE CT: 8871  
STONEBRIDGE LN: 8871  
STONEBRIDGE RD: 8871, 8872, 8971, 8972  
SUMAC ST: 8974  
SUNSET LN: 9072  
SUTCLIFF CIR: 9173  
SYLVANDALE CT S: 9072  
SYLVANDALE CT: 9072  
SYLVANDALE RD: 9072, 9073

## T

TEEPLE ST: 9173  
TORONTO ST: 9074  
TUSCARORA AVE: 8974

## V

VALLEY LN: 9173  
VANCE ST: 8974  
VANDALL ST: 9072  
VICKI LN: 8971  
VICTORIA RD S: 8971  
VICTORIA ST S: 8973, 8974  
VICTORIA WAY: 8973  
VIEW LN: 9173  
VIEW ST: 8974

## W

WACHTLER AVE: 9072  
WATER ST W: 9074, 9174  
WATSON AVE: 8974, 9074  
WEBSTER ST: 9074  
WINONA ST W: 9174  
WINSTON CIR: 9173  
WINSTON CT: 9173  
WOODRIDGE DR: 9073  
WYOMING ST W: 9174

## Y

YOUNGMAN AVE: 8771