



**Clamp Body**  
Profiled Inside Surface with Tension Clearance

14



**Clamp Body**  
Smooth Inside Surface without Tension Clearance

15



**Clamp Body with Elastomer Insert**

16



**Noise Reduction Clamp**

17



**Clamp Body for Conduit Hoses**

18



**Clamp Body**  
Compact Design for both Compact / Regular Hydraulic Hoses

19



**Clamp Body**  
Rectangular Design for Proximity Switches

19

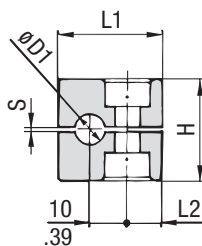
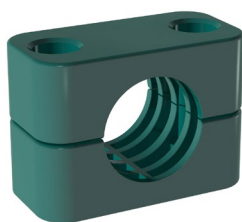
	<b>Weld Plate</b> SP	20		<b>Cover Plate</b> DP	26
	<b>Elongated Weld Plate</b> SPV	20		<b>Hexagon Head Bolt for use with Cover Plate DP</b> AS	26
	<b>Twin Weld Plate</b> DSP	21		<b>Safety Washer (DIN 93)</b> SI	27
	<b>Group Weld Plate</b> RAP	21		<b>Safety Washer (DIN 463)</b> SI	27
	<b>Angled Weld Plate</b> WSP	22		<b>Socket Cap Screw</b> IS	28
	<b>Bridge Weld Plate</b> BSP	22		<b>Slotted Head Screw</b> LI	28
	<b>Clamp Body for Multi-Group Weld Plates</b>	23		<b>Hexagon Head Bolt for use with Insert ES / EP</b> AS	28
	<b>Multi-Group Weld Plate</b> RAP-MGR	23		<b>Insert</b> ES / EP	28
	<b>Hexagon Rail Nut</b> SM / SMG	24		<b>Safety Locking Plate</b> SIG	29
	<b>Mounting Rail</b> TS	24		<b>Stacking Bolt</b> AF	29
	<b>Channel Rail Adaptor</b> CRA	25		<b>Clamp Assemblies</b>	30



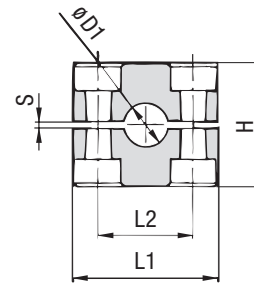
## Clamp Body - Profiled Design

Profiled Inside Surface with Tension Clearance

A



STAUFF Group 1



STAUFF Group 1A to 8

### Ordering Codes

#### Clamp Body

Clamp Body, STAUFF Group 1A

\*1\*06-\*PP

\*1\*06A-\*PP

One clamp body is consisting of two clamp halves.

\* STAUFF Group

1

\* Exact outside diameter Ø D1 (mm)

06

\* Material code (see below)

PP

### Standard Materials



**Polypropylene**

Colour: Green  
Material code: **PP**



**Polypropylene**

Colour: Black  
Material code: **PP-BK**



**Polyamide**

Colour: Black  
Material code: **PA**



**Thermoplastic Elastomer (87 Shore-A)**

Colour: Black  
Material code: **SA**



**Aluminium**

Colour: Self-Colour  
Material code: **AL** (STAUFF Group 1A to 6)

See pages 154 / 155 for material properties and technical information.

### Special Materials

Please contact STAUFF for further details on fire-proof clamp body materials, tested and approved according to several international fire-protection standards (such as BS 6853, EN 45545-2, UL 94 and many more).

See pages 156 / 157 for material properties and technical information.

### Product Features

- Proven, tested and trusted product in various markets
- Recommended for the safe installation of rigid pipes and tubes
- Available for all commonly used pipe and tube outside diameters
- Environmental protection due to vibration/noise reducing design
- Excellent weathering resistance, even under extreme conditions

Group	STAUFF	DIN	Outside Diameter Pipe / Tube		Nominal Bore Pipe (in)	Copper Tube ASTM B88 (in)	Ordering Codes (2 Clamp Halves) (** = Material)	Dimensions (mm/in)						
			Ø D1 (mm)	(in)				L1	L2	H	S min.	Width		
1		0	6				106-**							
			6,4	1/4			106.4-**							
			8	5/16			108-**	28	9,5	27	0,4	30		
			9,5	3/8	1/4		109.5-**	1.10	.37	1.06	.02	1.18		
			10		1/8		110-**							
1A		1	6				106A-**							
			6,4	1/4			106.4A-**							
			8	5/16			108A-**	37	20	27	0,4	30		
			9,5	3/8	1/4		109.5A-**	1.46	.79	1.06	.02	1.18		
			10		1/8		110A-**							
2		2	12				112-**							
			12,7	1/2	3/8		212.7-**							
			13,5		1/4		213.5-**							
			14				214-**							
			15				215-**	42	26	33	0,6	30		
3		3	16	5/8	1/2		216-**	1.65	1.02	1.30	.02	1.18		
			17,2		3/8		217.2-**							
			18				218-**							
			19	3/4			319-**							
			20				320-**							
4		4	21,3		1/2		321.3-**	50	33	36	0,6	30		
			22	7/8	3/4		322-**	1.97	1.30	1.42	.02	1.18		
			25				325-**							
			25,4	1			325.4-**							
			26,9		3/4		426.9-**							
5		5	28				428-**							
			28,6		1		428.6-**	59	40	42	0,6	30		
			30				430-**	2.32	1.57	1.65	.02	1.18		
			32				432-**							
			32	1-1/4			532-**							
6		6	33,7		1		533.7-**							
			35			1-1/4	535-**							
			38	1-1/2			538-**	71	52	58	0,8	30		
			40				540-**	2.80	2.05	2.28	.03	1.18		
			41,3		1-1/2		541.3-**							
7		7	42		1-1/4		542-**							
			44,5	1-3/4			644.5-**							
			48,3		1-1/2		648.3-**	86	66	66	0,8	30		
			50,8	2			650.8-**	3.39	2.60	2.60	.03	1.18		
			54		2		654-**							
8		8	57,2	2-1/4			757.2-**							
			60,3		2		760.3-**							
			63,5	2-1/2			763.5-**	121	94	93	0,8	30		
			70	2-3/4			770-**	4.76	3.70	3.66	.03	1.18		
			73		2-1/2 (ANSI B 36-10)		773-**							
8		8	76,1	3	2-1/2 (DIN EN 10220)		776.1-**							
			88,9		3		888.9-**	147	120	118	0,8	30		
			102	4	3-1/2		8102L-**	5.79	4.72	4.65	.03	1.18		

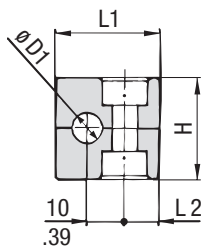
Additional outside diameters are available upon request. Please contact STAUFF for further information.

Dimensional drawings: All dimensions in mm (in).

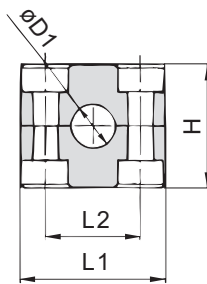


## Clamp Body - Type H

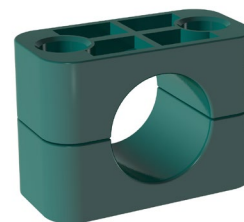
Smooth Inside Surface without Tension Clearance



STAUFF Group 1



STAUFF Group 1A to 8



A

Group	STAUFF	DIN	Outside Diameter		Ordering Codes (2 Clamp Halves)	Dimensions (mm/in)									
			Hose Ø D1 (mm)	(in)		(** - H = Material)	L1	L2	H	Width					
1	0	6			106-**-H	28	9,5	26	30						
		6,4	1/4	106.4-**-H											
		8	5/16	108-**-H											
		9,5	3/8	109.5-**-H											
		10		110-**-H											
		12		112-**-H											
1A	1	6			106A-**-H	37	20	26	30						
		6,4	1/4	106.4A-**-H											
		8	5/16	108A-**-H											
		9,5	3/8	109.5A-**-H											
		10		110A-**-H											
		12		112A-**-H											
2	2	12,7	1/2		212.7-**-H	42	26	32	30						
		13,5		213.5-**-H											
		14		214-**-H											
		15		215-**-H											
		16	5/8	216-**-H											
		17,2		217.2-**-H											
3	3	18			218-**-H	50	33	35,5	30						
		19	3/4	319-**-H											
		20		320-**-H											
		21,3		321.3-**-H											
		22	7/8	322-**-H											
		25		325-**-H											
4	4	25,4	1		325.4-**-H	59	40	41,5	30						
		26,9		426.9-**-H											
		28		428-**-H											
		30		430-**-H											
		32		432-**-H											
		5	5	32	1-1/4						532-**-H	71	52	56,5	30
33,7				533.7-**-H											
35				535-**-H											
38	1-1/2			538-**-H											
40				540-**-H											
42				542-**-H											
6	6	44,5	1-3/4		644.5-**-H	86	66	64,5	30						
		48,3		648.3-**-H											
		50,8	2	650.8-**-H											
		54		654-**-H											
		57,2	2-1/4	757.2-**-H											
		60,3		760.3-**-H											
7	7	63,5	2-1/2		763.5-**-H	121	94	92	30						
		70	2-3/4	770-**-H											
		73		773-**-H											
		76,1	3	776.1-**-H											
		8	8	88,9							888.9-**-H	147	120	116	30
				102	4					8102L-**-H					

## Ordering Codes

Clamp Body **\*1\*06-\*PP-H**  
 Clamp Body, STAUFF Group 1A **\*1\*06A-\*PP-H**

One clamp body is consisting of two clamp halves.

\* STAUFF Group **1**  
 \* Exact outside diameter Ø D1 (mm) **06**  
 \* Material code (see below) **PP-H**

## Standard Materials



**Polypropylene**  
 Colour: Green  
 Material code: **PP-H**



**Polypropylene**  
 Colour: Black  
 Material code: **PP-H-BK**



**Polyamide**  
 Colour: Black  
 Material code: **PA-H**



**Thermoplastic Elastomer (87 Shore-A)**  
 Colour: Black  
 Material code: **SA-H**

See pages 154 / 155 for material properties and technical information.

## Special Materials

Please contact STAUFF for further details on fire-proof clamp body materials, tested and approved according to several international fire-protection standards (such as BS 6853, EN 45545-2, UL 94 and many more).

See pages 156 / 157 for material properties and technical information.

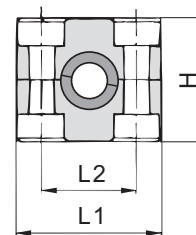
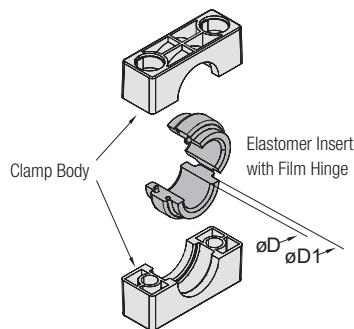
## Product Features

- Proven, tested and trusted product in various markets
- Recommended for the safe installation of hoses and cables
- Chamfered edges avoid damaging of the hoses and cables
- Available for all commonly used hose and cable outside diameters
- Excellent weathering resistance, even under extreme conditions

Additional outside diameters are available upon request. Please contact STAUFF for further information.



## Clamp Body with Elastomer Insert Type RI



A

### Ordering Codes

#### Clamp Assembly \*4\*06-\*PP-R

One assembly is consisting of one clamp body and one insert.

- \* STAUFF Group **4**
- \* Exact outside diameter Ø D (mm) **06**
- \* Material code (see below) **PP-R**

#### Clamp Body \*4-\*PP-R

One clamp body is consisting of two clamp halves.

- \* STAUFF Group **4**
- \* Material code (see below) **PP-R**

#### Elastomer Insert \*RI-\*06-\*4/4S

- \* Elastomer Insert **RI**
- \* Exact outside diameter Ø D (mm) **06**
- \* STAUFF Group 4 (Standard) and 4S (Heavy) **4/4S**
- 6 (Standard) and 5S (Heavy) **6/5S**

### Standard Materials



**Polypropylene**  
Colour: Black  
Material code: **PP-R**



**Polyamide**  
Colour: Black  
Material code: **PA-R**



Elastomer Insert  
**Thermoplastic Elastomer** (73 Shore-A)  
Colour: Black

See pages 154 / 155 for material properties and technical information.

### Special Materials

Please contact STAUFF for further details on fire-proof clamp body materials, tested and approved according to several international fire-protection standards (such as BS 6853, EN 45545-2, UL 94 and many more).

See pages 156 / 157 for material properties and technical information.

### Product Features

- Proven, tested and trusted product in various markets
- Either for the extra vibration/noise reducing installation of pipes and tubes or the extra gentle installation of hoses and cables
- Available for all commonly used outside diameters
- Excellent weathering resistance, even under extreme conditions

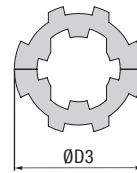
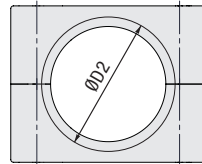
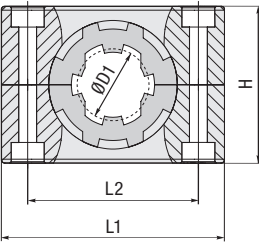
Group	STAUFF	DIN	Outside Diameter Pipe / Tube / Hose		Ordering Codes Clamp Assembly (Clamp Body + Insert)	(**R = Clamp Body Material)			Dimensions (mm/in)					
			Ø D (mm)	(in)		Clamp Body (2 Clamp Halves)	Clamp Body	Insert *	Ø D1	L1	L2	H	Width	
4	4	4	6		406-**-R	4-**-R			RI-06-4/4S	25 .98	59 2.32	40 1.57	41,2 1.62	30 1.18
			8	5/16	408-**-R				RI-08-4/4S					
			10		410-**-R				RI-10-4/4S					
			12		412-**-R				RI-12-4/4S					
			12,7	1/2	412.7-**-R				RI-12.7-4/4S					
			14		414-**-R				RI-14-4/4S					
			15		415-**-R				RI-15-4/4S					
			16	5/8	416-**-R				RI-16-4/4S					
			17,2		417.2-**-R				RI-17.2-4/4S					
			18		418-**-R				RI-18-4/4S					
			19	3/4	419-**-R				RI-19-4/4S					
			6	6	6				20					
21,3		621.3-**-R				RI-21.3-6/5S								
22	7/8	622-**-R				RI-22-6/5S								
25		625-**-R				RI-25-6/5S								
26,9		626.9-**-R				RI-26.9-6/5S								
28		628-**-R				RI-28-6/5S								
30		630-**-R				RI-30-6/5S								
32	1-1/4	632-**-R				RI-32-6/5S								

\* Elastomer Inserts for Standard Series clamp bodies, STAUFF Group 4 also fit into Heavy Series clamp bodies, STAUFF Group 4S. Elastomer Inserts for Standard Series clamp bodies, STAUFF Group 6 also fit into Heavy Series clamp bodies, STAUFF Group 5S.

Additional outside diameters are available upon request. Please contact STAUFF for further information.



Noise Reduction Clamp  
Type NRC



A

Group	STAUFF	DIN	Outside Diameter		Ordering Codes Clamp Assembly (Clamp Body + NRC Insert)	Clamp Body (2 Clamp Halves)	NRC Insert (2 Insert Halves)	Dimensions (mm/in)						
			Ø D1 (mm)	(in)				ØD2	ØD3	L1	L2	H	Width	
2	2	2	6		206-PP-NRC	2-PP-NRC	RI-NRC-6-2							
			8	5/16	208-PP-NRC		RI-NRC-8-2							
			10		210-PP-NRC		RI-NRC-10-2	25	26	42	26	32	30	
			12		212-PP-NRC		RI-NRC-12-2	.98	1.02	1.65	1.02	1.26	1.18	
			12,7	1/2	212.7-PP-NRC		RI-NRC-12.7-2							
3	3	3	14		314-PP-NRC	3-PP-NRC	RI-NRC-14-3							
			15		315-PP-NRC		RI-NRC-15-3	28	29	50	33	35,5	30	
			16	5/8	316-PP-NRC		RI-NRC-16-3	1.10	1.14	1.97	1.30	1.40	1.18	
4	4	4	18		418-PP-NRC	4-PP-NRC	RI-NRC-18-4	34	35	59	40	41,5	30	
			20		420-PP-NRC		RI-NRC-20-4	1.34	1.38	2.32	1.57	1.63	1.18	
5	5	5	21,3		521.3-PP-NRC	5-PP-NRC	RI-NRC-21.3-5							
			22	7/8	522-PP-NRC		RI-NRC-22-5							
			25		525-PP-NRC		RI-NRC-25-5							
			26,9		526.9-PP-NRC		RI-NRC-26.9-5	49	50	71	52	56,5	30	
			28		528-PP-NRC		RI-NRC-28-5	1.93	1.97	2.80	2.05	2.22	1.18	
			30		530-PP-NRC		RI-NRC-30-5							
6	6	6	32	1-1/4	532-PP-NRC	6-PP-NRC	RI-NRC-32-5							
			33,7		633.7-PP-NRC		RI-NRC-33.7-6							
			35		635-PP-NRC		RI-NRC-35-6							
			38	1-1/2	638-PP-NRC		RI-NRC-38-6	60	61	86	66	64,5	30	
			40		640-PP-NRC		RI-NRC-40-6	2.36	2.40	3.39	2.60	2.54	1.18	
			42		642-PP-NRC	RI-NRC-42-6								

### Ordering Codes

**Clamp Assembly \*2\*12-\*PP-NRC**

One assembly is consisting of one clamp body and one insert.

- \* STAUFF Group **2**
- \* Exact outside diameter Ø D1 (mm) **12**
- \* Material code (see below) **PP-NRC**

**NRC Clamp Body \*2-\*PP-NRC**

One NRC clamp body is consisting of two clamp halves.

- \* STAUFF Group **2**
- \* Material code (see below) **PP-NRC**

**NRC Elastomer Insert \*RI-NRC-\*12-\*2**

One NRC elastomer insert is consisting of two insert halves.

- \* NRC Elastomer Insert **RI-NRC**
- \* Exact outside diameter ØD1 (mm) **12**
- \* STAUFF Group **2**

### Standard Materials

**Polypropylene**  
Colour: Black  
Material code: **PP-NRC**

**Elastomer Insert**  
**Thermoplastic Elastomer (73 Shore-A)**  
Colour: Black

See pages 154 / 155 for material properties and technical information.

Alternative materials are available upon request. Please contact STAUFF for further information.

### Special Materials

**Please contact STAUFF for further details on fire-proof clamp body materials, tested and approved according to several international fire-protection standards (such as BS 6853, EN 45545-2, UL 94 and many more).**

See pages 156 / 157 for material properties and technical information.

Additional outside diameters are available upon request. Please contact STAUFF for further information.

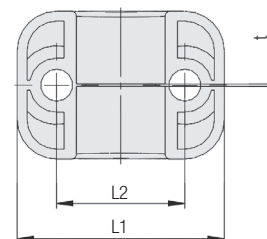
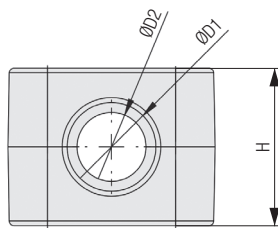
### Product Features

- Designed for the noise and vibration reducing installation of pipes and tubes
- Suitable for the most common outside diameters from 6 to 42 mm and from ¼ to 1 ½ inch respectively
- Working principle based on a specially shaped, two-part elastomer insert, which mechanically absorbs vibration in the pipe or tube and as a result reduces noises arising to a minimum
- Elastomer insert is in particular distinguished by how little of its surface is in contact with the pipe or tube as well as with the clamp body
- Light tension of the elastomer insert in mounted condition provides the necessary clamping force
- Tongue-groove contour of the elastomer insert and the clamp body (which is reversed and thus diverges from standard DIN 3015 clamps with elastomer insert) enables the system to be used for the maximum range of outside diameters per clamp size, which contributes to flexibility, versatility and optimisation of the required installation space



## Clamp Body for Conduit Hoses Type CHC

A



### Ordering Codes

#### Clamp Body

**\*2\*12-\*PA-CHC**

One clamp body is consisting of two clamp halves.

- \* STAUFF Group **2**
- \* Nominal Size of the Conduit Hose **12**
- \* Material code (see below) **PA-CHC**

### Standard Materials



**Polyamide**  
Colour: Black  
Material code: **PA-CHC**

See pages 154 / 155 for material properties and technical information.

### Special Materials

Please contact STAUFF for further details on fire-proof clamp body materials, tested and approved according to several international fire-protection standards (such as BS 6853, EN 45545-2, UL 94 and many more).

See pages 156 / 157 for material properties and technical information.

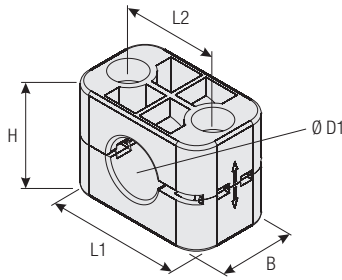
### Product Features

- Design of the inside surface of the clamp body prevents corrugated conduit hoses from sliding
- Chamfered edges avoid damaging of the conduit hoses
- Available for all commonly used nominal sizes
- Excellent weathering resistance, even under extreme conditions

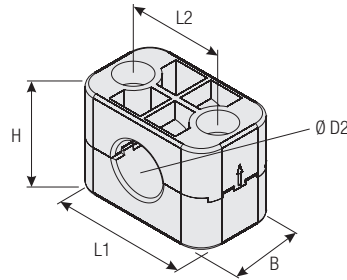
Group	STAUFF	DIN	Nominal Size Conduit Hose	Ordering Codes (2 Clamp Halves)	Dimensions (mm/in)						
					ØD1	ØD2	t	L1	L2	H	Width
2	2	10	12	210-PA-CHC	13	11	0,5	42	26	32	30
				212-PA-CHC	.51	.43	.02	1.65	1.02	1.26	1.18
3	3	17	12	317-PA-CHC	16	13,5	0,5	50	33	35,5	30
				317-PA-CHC	.63	.53	.02	1.97	1.30	1.40	1.18
4	4	23	17	423-PA-CHC	21,5	18	0,7	59	40	41,5	30
				423-PA-CHC	.85	.71	.03	2.32	1.57	1.63	1.18
5	5	29	23	529-PA-CHC	29	24,5	0,7	71	52	56,5	30
				529-PA-CHC	1.14	.96	.03	2.80	2.05	2.22	1.18
				529-PA-CHC	35	30,5	1,0	86	66	64,5	30
5	5	36	23	536-PA-CHC	1.38	1.20	.04	3.39	2.60	2.54	1.18
				536-PA-CHC	43	38,5	1,0	121	94	92	30
6	6	48	23	648-PA-CHC	1.69	1.52	.04	4.76	3.70	3.62	1.18
				648-PA-CHC	55	49,5	1,0	147	120	116	30
					2.17	1.95	.51	5.79	4.72	4.57	1.18

Additional outside diameters are available upon request. Please contact STAUFF for further information.





For Use with Regular Hose



For Use with Compact Hose  
(Upper Clamp Half rotated by 180°)

Group	STAUFF	DIN	Outside Diameter Regular Hose		Outside Diameter Compact Hose		Ordering Codes (2 Clamp Halves) (*-*-* = Material)	Dimensions (mm/in)				
			Ø D1 (mm)	(in)	Ø D2 (mm)	(in)		L1	L2	H		B
3	3	19	.75	17,4	.69	319-***-CC-BK						
		22,2	.87	20,6	.81	322.2-***-CC-BK	50 1.97	33 1.30	35,5 1.40	34 1.34	30 1.18	
		25,4	1.00	23,7	.93	325.4-***-CC-BK						

Additional outside diameters are available upon request. Please contact STAUFF for further information.

### Product Features

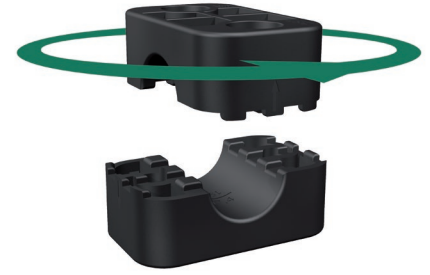
- Only one clamp body required for two different hose diameters (compact hose + regular hose)
- Rotate upper clamp half by 180° and use clamp body to fasten compact hoses instead of regular hoses
- Available for three different combinations of outside hose diameters
- Outer dimensions according to DIN 3015, Part 1
- Effective cost reduction due to lower inventories

### Special Materials

Please contact STAUFF for further details on fire-proof clamp body materials, tested and approved according to several international fire-protection standards (such as BS 6853, EN 45545-2, UL 94 and many more).

See pages 156 / 157 for material properties and technical information.

## Clamp Body - Compact Design Type CC



A

### Ordering Codes

Clamp Body **\*3\*19-\*PP-H-CC-BK**

One clamp body is consisting of two clamp halves.

- \* STAUFF Group **3**
- \* Outside diameter Ø D1 (mm) of regular hose **19**
- \* Material code (see below) **PP-H-CC-BK**

### Standard Materials

**Polypropylene**  
Colour: Black  
Material code: **PP-H-CC-BK**

See pages 154 / 155 for material properties and technical information.

### Ordering Codes

One clamp body is consisting of two clamp halves.

Clamp Body **540-40-PP-VK**  
Rectangular design with a square of 40 mm x 40 mm / 1.57 in x 1.57 in

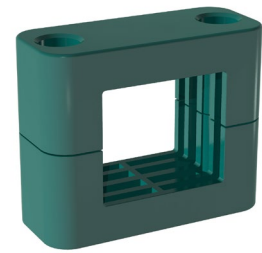
Clamp Body **540-36-PP-VK**  
Rectangular design with a square of 40 mm x 36 mm / 1.57 in x 1.42 in

Please replace PP by PA to order a clamp body made of Polyamide instead of Polypropylene.

### Product Features

- Outer dimensions of clamp body according to Standard Series, STAUFF Group 5
- For proximity switches according to DIN EN 60947-5-2 or similar, rectangular construction, with a square of 40 mm x 40 mm / 1.57 in x 1.57 in or 40 mm x 36 mm / 1.57 in x 1.42 in
- For proximity switches according to DIN EN 60947-5-2 or similar, round construction, please use Standard Series clamp body, STAUFF Group 4, with the diameter required (e.g. 430-PP)
- Use with Hexagon Rail Nut SM and Mounting Rail TS to provide axial and horizontal position adjustment by loosening the bolts

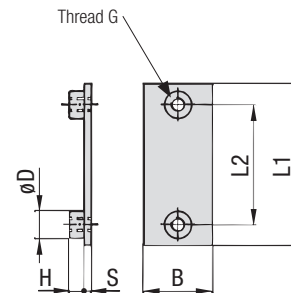
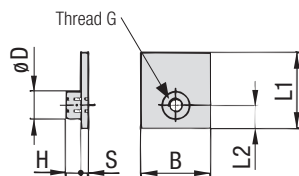
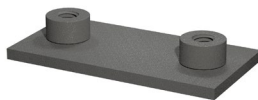
## Clamp Body - Rectangular Design Type VK





## Single Weld Plate Type SP

A



STAUFF Group 1

STAUFF Group 1A to 8

### Ordering Codes

#### Weld Plate

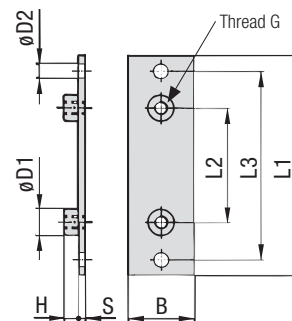
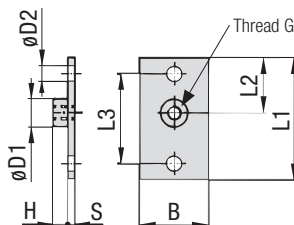
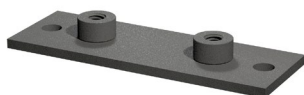
**\*SP-\*1-\*M-\*W2**

- \* Single Weld Plate **SP**
- \* STAUFF Group **1**
- \* Thread code   Metric ISO thread **M**  
                    Unified coarse (UNC) thread **U**
- \* Material code   Carbon Steel, uncoated **W1**  
                    Carbon Steel, phosphated **W2**  
                    Carbon Steel, zinc/nickel-plated **W3**  
  
                    Stainless Steel V2A **W4**  
                    1.4301 / 1.4305 (AISI 304 / 303)  
                    Stainless Steel V4A **W5**  
                    1.4401 / 1.4571 (AISI 316 / 316 Ti)  
  
                    Aluminium EN AW-6060 **W85**  
                    (Dimension S: 5 mm / .20 in)

Group	DIN	Dimensions (mm/m)	Thread G	L1	L2	B	S	H	ØD	Ordering Codes (Standard Options)
1	0	M6	31,5	10	30	3	6,5	12		SP-1-M-W2
		1/4-20 UNC	1.24	0.39	1.18	.12	.26	.47		SP-1-U-W2
1A	1	M6	36	20	30	3	6,5	12		SP-1A-M-W2
		1/4-20 UNC	1.42	0.79	1.18	.12	.26	.47		SP-1A-U-W2
2	2	M6	42	26	30	3	6,5	12		SP-2-M-W2
		1/4-20 UNC	1.65	1.02	1.18	.12	.26	.47		SP-2-U-W2
3	3	M6	50	33	30	3	6,5	12		SP-3-M-W2
		1/4-20 UNC	1.97	1.30	1.18	.12	.26	.47		SP-3-U-W2
4	4	M6	60	40	30	3	6,5	12		SP-4-M-W2
		1/4-20 UNC	2.36	1.57	1.18	.12	.26	.47		SP-4-U-W2
5	5	M6	71	52	30	3	6,5	12		SP-5-M-W2
		1/4-20 UNC	2.80	2.05	1.18	.12	.26	.47		SP-5-U-W2
6	6	M6	88	66	30	3	6,5	12		SP-6-M-W2
		1/4-20 UNC	3.46	2.60	1.18	.12	.26	.47		SP-6-U-W2
7	7	M6	122	94	30	5	6,5	12		SP-7-M-W2
		1/4-20 UNC	4.80	3.70	1.18	.20	.26	.47		SP-7-U-W2
8	8	M6	148	120	30	5	6,5	12		SP-8-M-W2
		1/4-20 UNC	5.83	4.72	1.18	.20	.26	.47		SP-8-U-W2

All threaded parts are available with Metric ISO thread or unified coarse (UNC) thread according to dimension table. Alternative materials and surface finishings are available upon request. Contact STAUFF for further information.

## Elongated Weld Plate Type SPV



STAUFF Group 1

STAUFF Group 1A to 8

### Ordering Codes

#### Weld Plate

**\*SPV-\*1-\*M-\*W2**

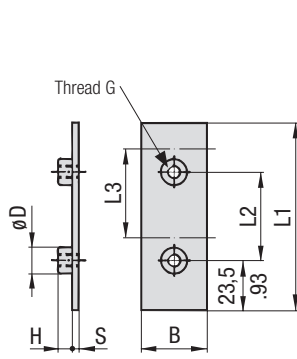
- \* Elongated Weld Plate **SPV**
- \* STAUFF Group **1**
- \* Thread code   Metric ISO thread **M**  
                    Unified coarse (UNC) thread **U**
- \* Material code   Carbon Steel, uncoated **W1**  
                    Carbon Steel, phosphated **W2**  
                    Carbon Steel, zinc/nickel-plated **W3**  
  
                    Stainless Steel V2A **W4**  
                    1.4301 / 1.4305 (AISI 304 / 303)  
                    Stainless Steel V4A **W5**  
                    1.4401 / 1.4571 (AISI 316 / 316 Ti)

Group	DIN	Dimensions (mm/m)	Thread G	L1	L2	L3	B	S	H	ØD1	ØD2	Ordering Codes (Standard Options)
1	0	M6	58	24,5	44	30	3	6,5	12	6,5		SPV-1-M-W2
		1/4-20 UNC	2.28	.96	1.73	1.18	.12	.26	.47	.26		SPV-1-U-W2
1A	1	M6	64	20	50	30	3	6,5	12	6,5		SPV-1A-M-W2
		1/4-20 UNC	2.52	.79	1.97	1.18	.12	.26	.47	.26		SPV-1A-U-W2
2	2	M6	70	26	56	30	3	6,5	12	6,5		SPV-2-M-W2
		1/4-20 UNC	2.76	1.02	2.20	1.18	.12	.26	.47	.26		SPV-2-U-W2
3	3	M6	78	33	64	30	3	6,5	12	6,5		SPV-3-M-W2
		1/4-20 UNC	3.07	1.30	2.52	1.18	.12	.26	.47	.26		SPV-3-U-W2
4	4	M6	87	40	73	30	3	6,5	12	6,5		SPV-4-M-W2
		1/4-20 UNC	3.43	1.57	2.87	1.18	.12	.26	.47	.26		SPV-4-U-W2
5	5	M6	100	52	86	30	3	6,5	12	6,5		SPV-5-M-W2
		1/4-20 UNC	3.94	2.05	3.39	1.18	.12	.26	.47	.26		SPV-5-U-W2
6	6	M6	115	66	100	30	3	6,5	12	6,5		SPV-6-M-W2
		1/4-20 UNC	4.53	2.60	3.94	1.18	.12	.26	.47	.26		SPV-6-U-W2
7	7	M6	150	94	136	30	5	6,5	12	6,5		SPV-7-M-W2
		1/4-20 UNC	5.91	3.70	5.35	1.18	.20	.26	.47	.26		SPV-7-U-W2
8	8	M6	178	120	162	30	5	6,5	12	6,5		SPV-8-M-W2
		1/4-20 UNC	7.01	4.72	6.38	1.18	.20	.26	.47	.26		SPV-8-U-W2

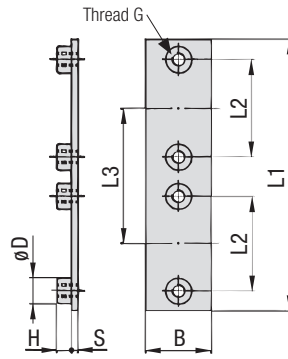
All threaded parts are available with Metric ISO thread or unified coarse (UNC) thread according to dimension table. Alternative materials and surface finishings are available upon request. Contact STAUFF for further information.



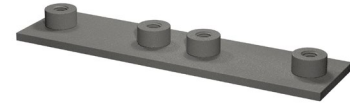
**Twin Weld Plate  
for 2 Clamp Bodies  
Type DSP**



STAUFF Group 1



STAUFF Group 1A to 8



Group STAUFF	DIN	Dimensions (mm/in)								Ordering Codes (Standard Options)
		Thread G	L1	L2	L3	B	S	H	ØD	
1	0	M6	87	40	40	30	3	6.5	12	DSP-1-40-M-W2
		1/4-20 UNC	3.43	1.57	1.57	1.18	.12	.26	.47	DSP-1-40-U-W2
1A	1	M6	77	20	37	30	3	6.5	12	DSP-1A-37-M-W2
		1/4-20 UNC	3.03	.79	1.46	1.18	.12	.26	.47	DSP-1A-37-U-W2
2	2	M6	86	26	44	30	3	6.5	12	DSP-2-44-M-W2
		1/4-20 UNC	3.39	1.02	1.73	1.18	.12	.26	.47	DSP-2-44-U-W2
3	3	M6	102	33	52	30	3	6.5	12	DSP-3-52-M-W2
		1/4-20 UNC	4.02	1.30	2.05	1.18	.12	.26	.47	DSP-3-52-U-W2
4	4	M6	120	40	60	30	3	6.5	12	DSP-4-60-M-W2
		1/4-20 UNC	4.72	1.57	2.36	1.18	.12	.26	.47	DSP-4-60-U-W2
5	5	M6	145	52	75	30	3	6.5	12	DSP-5-75-M-W2
		1/4-20 UNC	5.71	2.05	2.95	1.18	.12	.26	.47	DSP-5-75-U-W2
6	6	M6	178	66	90	30	3	6.5	12	DSP-6-90-M-W2
		1/4-20 UNC	7.01	2.60	3.54	1.18	.12	.26	.47	DSP-6-90-U-W2

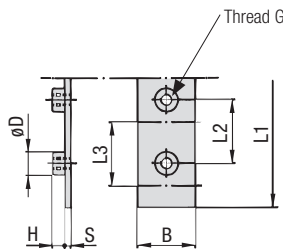
All threaded parts are available with Metric ISO thread or unified coarse (UNC) thread according to dimension table. Alternative materials and surface finishings are available upon request. Contact STAUFF for further information.

**Ordering Codes**

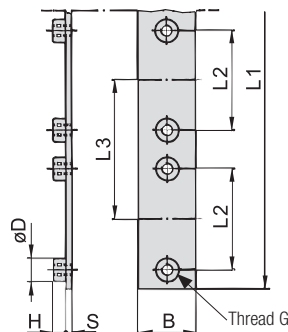
**Weld Plate \*DSP-\*1-\*40-\*M-\*W2**

- \* Twin Weld Plate for 2 Clamp Bodies **DSP**
- \* STAUFF Group **1**
- \* Pipe center spacing L3 (mm) **40**
- \* Thread code Metric ISO thread **M**  
Unified coarse (UNC) thread **U**
- \* Material code Carbon Steel, uncoated **W1**  
Carbon Steel, phosphated **W2**  
Carbon Steel, zinc/nickel-plated **W3**  
Stainless Steel V2A **W4**  
1.4301 / 1.4305 (AISI 304 / 303) **W4**  
Stainless Steel V4A **W5**  
1.4401 / 1.4571 (AISI 316 / 316 Ti) **W5**

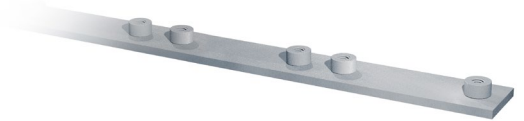
**Group Weld Plate  
for 5 or 10 Clamp Bodies  
Type RAP**



STAUFF Group 1



STAUFF Group 1A to 8



Group STAUFF	DIN	Dimensions (mm/in)								Ordering Codes (Standard Options)
		Thread G	L1	L2	L3	B	S	H	ØD	
1	0	M6	314	31	31	30	4	6.5	12	RAP-1-31-10-M-W1
		1/4-20 UNC	12.36	1.22	1.22	1.18	.16	.26	.47	RAP-1-31-10-U-W1
1A	1	M6	373	20	37	30	4	6.5	12	RAP-1A-37-10-M-W1
		1/4-20 UNC	14.69	.79	1.46	1.18	.16	.26	.47	RAP-1A-37-10-U-W1
2	2	M6	442	26	44	30	4	6.5	12	RAP-2-44-10-M-W1
		1/4-20 UNC	17.40	1.02	1.73	1.18	.16	.26	.47	RAP-2-44-10-U-W1
3	3	M6	521	33	52	30	4	6.5	12	RAP-3-52-10-M-W1
		1/4-20 UNC	20.51	1.30	2.05	1.18	.16	.26	.47	RAP-3-52-10-U-W1
4	4	M6	300	40	60	30	4	6.5	12	RAP-4-60-5-M-W1
		1/4-20 UNC	11.81	1.57	2.36	1.18	.16	.26	.47	RAP-4-60-5-U-W1
5	5	M6	378	52	75	30	4	6.5	12	RAP-5-75-5-M-W1
		1/4-20 UNC	14.88	2.05	2.95	1.18	.16	.26	.47	RAP-5-75-5-U-W1
6	6	M6	450	66	90	30	4	6.5	12	RAP-6-90-5-M-W1
		1/4-20 UNC	17.72	2.60	3.54	1.18	.16	.26	.47	RAP-6-90-5-U-W1

All threaded parts are available with Metric ISO thread or unified coarse (UNC) thread according to dimension table. Alternative materials and surface finishings are available upon request. Contact STAUFF for further information.

**Ordering Codes**

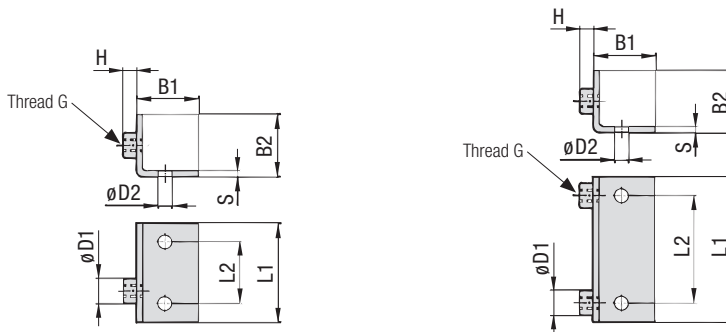
**Weld Plate \*RAP-\*1-\*31-\*10-\*M-\*W1**

- \* Group Weld Plate for 5 or 10 Clamp Bodies **RAP**
- \* STAUFF Group **1**
- \* Pipe center spacing L3 (mm) **31**
- \* Number of clamps **10**
- \* Thread code Metric ISO thread **M**  
Unified coarse (UNC) thread **U**
- \* Material code Carbon Steel, uncoated **W1**  
Carbon Steel, phosphated **W2**  
Carbon Steel, zinc/nickel-plated **W3**  
Stainless Steel V2A **W4**  
1.4301 / 1.4305 (AISI 304 / 303) **W4**  
Stainless Steel V4A **W5**  
1.4401 / 1.4571 (AISI 316 / 316 Ti) **W5**

Dimensional drawings: All dimensions in mm (in).



### Angled Weld Plate Type WSP



STAUFF Group 1

STAUFF Group 1A to 6

#### Ordering Codes

##### Weld Plate

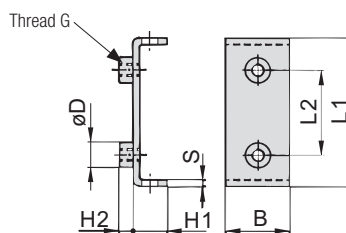
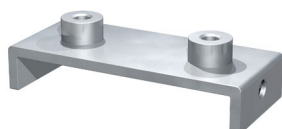
**\*WSP-\*1-\*M-\*W1**

- \* Angled Weld Plate **WSP**
- \* STAUFF Group **1**
- \* Thread code    Metric ISO thread **M**  
                          Unified coarse (UNC) thread **U**
- \* Material code    Carbon Steel, uncoated **W1**  
                          Carbon Steel, zinc/nickel-plated **W3**  
  
                          Stainless Steel V2A **W4**  
                          1.4301 / 1.4305 (AISI 304 / 303) **W4**  
                          Stainless Steel V4A **W5**  
                          1.4401 / 1.4571 (AISI 316 / 316 Ti) **W5**

Group STAUFF	DIN	Dimensions (mm/m)								Ordering Codes (Standard Options)	
		Thread G	L1	L2	B1	B2	S	H	ØD1	ØD2	
1	0	M6	30	14	30	30	3	6,5	12	6,5	<b>WSP-1-M-W1</b>
		1/4-20 UNC	1.18	.55	1.18	1.18	.12	.26	.47	.26	<b>WSP-1-U-W1</b>
1A	1	M6	36	20	30	30	3	6,5	12	6,5	<b>WSP-1A-M-W1</b>
		1/4-20 UNC	1.26	.79	1.18	1.18	.12	.26	.47	.26	<b>WSP-1A-U-W1</b>
2	2	M6	42	26	30	30	3	6,5	12	6,5	<b>WSP-2-M-W1</b>
		1/4-20 UNC	1.65	1.02	1.18	1.18	.12	.26	.47	.26	<b>WSP-2-U-W1</b>
3	3	M6	50	33	30	30	3	6,5	12	6,5	<b>WSP-3-M-W1</b>
		1/4-20 UNC	1.97	1.30	1.18	1.18	.12	.26	.47	.26	<b>WSP-3-U-W1</b>
4	4	M6	60	40	30	30	3	6,5	12	6,5	<b>WSP-4-M-W1</b>
		1/4-20 UNC	2.36	1.57	1.18	1.18	.12	.26	.47	.26	<b>WSP-4-U-W1</b>
5	5	M6	70	52	30	30	3	6,5	12	6,5	<b>WSP-5-M-W1</b>
		1/4-20 UNC	2.76	2.05	1.18	1.18	.12	.26	.47	.26	<b>WSP-5-U-W1</b>
6	6	M6	88	66	30	30	3	6,5	12	6,5	<b>WSP-6-M-W1</b>
		1/4-20 UNC	3.46	2.60	1.18	1.18	.12	.26	.47	.26	<b>WSP-6-U-W1</b>

All threaded parts are available with Metric ISO thread or unified coarse (UNC) thread according to dimension table. Alternative materials and surface finishings are available upon request. Contact STAUFF for further information.

### Bridge Weld Plate Type BSP



#### Ordering Codes

##### Weld Plate

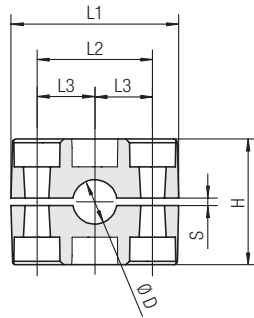
**\*BSP-\*1A-\*M-\*W1**

- \* Bridge Weld Plate **BSP**
- \* STAUFF Group **1A**
- \* Thread code    Metric ISO thread **M**  
                          Unified coarse (UNC) thread **U**
- \* Material code    Carbon Steel, uncoated **W1**  
                          Carbon Steel, phosphated **W2**  
                          Carbon Steel, zinc/nickel-plated **W3**  
  
                          Stainless Steel V2A **W4**  
                          1.4301 / 1.4305 (AISI 304 / 303) **W4**  
                          Stainless Steel V4A **W5**  
                          1.4401 / 1.4571 (AISI 316 / 316 Ti) **W5**

Group STAUFF	DIN	Dimensions (mm/m)								Ordering Codes (Standard Options)	
		Thread G	L1	L2	B	S	H1	H2	ØD		
1A	1	M6	48	20	30	3	13	6,5	12	6,5	<b>BSP-1A-M-W1</b>
		1/4-20 UNC	1.89	.79	1.18	1.18	.12	.52	.26	.47	<b>BSP-1A-U-W1</b>
2	2	M6	54	26	30	3	13	6,5	12	6,5	<b>BSP-2-M-W1</b>
		1/4-20 UNC	2.13	1.02	1.18	1.18	.12	.52	.26	.47	<b>BSP-2-U-W1</b>
3	3	M6	62	33	30	3	13	6,5	12	6,5	<b>BSP-3-M-W1</b>
		1/4-20 UNC	2.44	1.30	1.18	1.18	.12	.52	.26	.47	<b>BSP-3-U-W1</b>
4	4	M6	71	40	30	3	13	6,5	12	6,5	<b>BSP-4-M-W1</b>
		1/4-20 UNC	2.80	1.57	1.18	1.18	.12	.52	.26	.47	<b>BSP-4-U-W1</b>
5	5	M6	85	52	30	3	13	6,5	12	6,5	<b>BSP-5-M-W1</b>
		1/4-20 UNC	3.35	2.05	1.18	1.18	.12	.52	.26	.47	<b>BSP-5-U-W1</b>
6	6	M6	98	66	30	3	13	6,5	12	6,5	<b>BSP-6-M-W1</b>
		1/4-20 UNC	3.86	2.60	1.18	1.18	.12	.52	.26	.47	<b>BSP-6-U-W1</b>

All threaded parts are available with Metric ISO thread or unified coarse (UNC) thread according to dimension table. Alternative materials and surface finishings are available upon request. Contact STAUFF for further information.



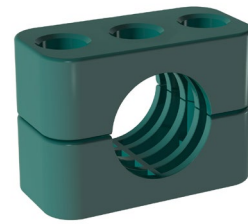


STAUFF Group 5

Group	Outside Diameter Pipe / Tube Ø D	Nominal Bore Pipe	Copper Tube ASTM B88	Ordering Codes (2 Clamp Halves) (** = Material)	Dimensions (mm/in)					
					L1	L2	L3	H	S min.	Width
5	20	1/2	3/4	520-**-MGR	71	52	26	58	0,8	30
	21,3			521.3-**-MGR						
	22			522-**-MGR						
	23			523-**-MGR						
	25	525-**-MGR								
	26,9	526.9-**-MGR								
	28	528-**-MGR								
	30	530-**-MGR								
	32	532-**-MGR								
	33,7	533.7-**-MGR								
	35	535-**-MGR								
	38	538-**-MGR								
	40	540-**-MGR								
	42	542-**-MGR								

Additional outside diameters are available upon request. Please contact STAUFF for further information.

## Clamp Body for Multi-Group Weld Plate Type MGR



### Ordering Codes

Clamp Body **\*5\*20-PP-MGR**

One clamp body is consisting of two clamp halves.

- \* STAUFF Group **5**
- \* Exact outside diameter Ø D1 (mm) **20**
- \* Material code (see below) **PP-MGR**

### Standard Materials

**Polypropylene**  
Colour: Green  
Material code: **PP-MGR**

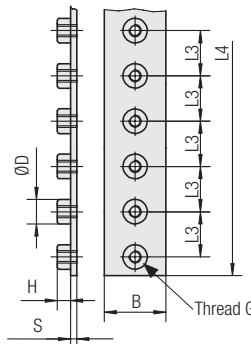
**Polyamide**  
Colour: Black  
Material code: **PA-MGR**

See pages 154 / 155 for properties and technical information.

Multi-Group Weld Plates (type RAP-MGR) are designed to be used in combination with Standard Series clamp bodies, STAUFF Group 2 (regular types, see pages 14 ff.) covering a diameter range from 8 mm / .31 in to 18 mm / .71 in, as well as Standard Series clamp bodies, STAUFF Group 5 (type MGR, see above) covering a diameter range from 20 mm / .79 in to 42 mm / 1.65 in. Thus, all Standard Series metal parts (bolts, cover plates) of these groups can be used.



Multi-Group Weld Plate RAP-MGR-25-312-M-W1



Number of Weld Nuts	Dimensions (mm/in)							Ordering Codes (Standard Options)
	Thread G	L3	L4	B	S	H	ØD	
6	M6	26	156	30	4	6,5	12	RAP-MGR-25-156-M-W1
	1/4-20 UNC	1.02	6.14	1.18	.16	.26	.47	RAP-MGR-25-156-U-W1
9	M6	26	234	30	4	6,5	12	RAP-MGR-25-234-M-W1
	1/4-20 UNC	1.02	9.21	1.18	.16	.26	.47	RAP-MGR-25-234-U-W1
12	M6	26	312	30	4	6,5	12	RAP-MGR-25-312-M-W1
	1/4-20 UNC	1.02	12.28	1.18	.16	.26	.47	RAP-MGR-25-312-U-W1
15	M6	26	390	30	4	6,5	12	RAP-MGR-25-390-M-W1
	1/4-20 UNC	1.02	15.35	1.18	.16	.26	.47	RAP-MGR-25-390-U-W1
20	M6	26	520	30	4	6,5	12	RAP-MGR-25-520-M-W1
	1/4-20 UNC	1.02	20.47	1.18	.16	.26	.47	RAP-MGR-25-520-U-W1
27	M6	26	700	30	4	6,5	12	RAP-MGR-25-700-M-W1
	1/4-20 UNC	1.02	27.55	1.18	.16	.26	.47	RAP-MGR-25-700-U-W1

Cover a diameter range from 8 mm (.31 in) to 42mm (1.65 in) with only one Group Weld Plate!

All threaded parts are available with Metric ISO thread or unified coarse (UNC) thread according to dimension table. Alternative materials and surface finishings are available upon request. Contact STAUFF for further information.

## Multi-Group Weld Plate for Clamp Body Sizes 2 and 5 (Type MGR) Type RAP-MGR



### Ordering Codes

Weld Plate **\*RAP-MGR-25-156-M-W1**

- \* Multi Group Weld Plate **RAP-MGR**
- \* Suitable for STAUFF Group 2 and 5 **25**
- \* Length L4 (mm) **156** (with 6 weld nuts)  
**234** (with 9 weld nuts)  
**312** (with 12 weld nuts)  
**390** (with 15 weld nuts)  
**520** (with 20 weld nuts)  
**700** (with 27 weld nuts)
- \* Thread code Metric ISO thread **M**  
Unified coarse (UNC) thread **U**
- \* Material code Carbon Steel, uncoated **W1**  
Stainless Steel V4A 1.4401 / 1.4571 (AISI 316 / 316 Ti) **W5**

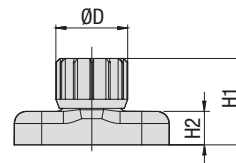
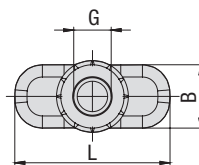


### Hexagon Rail Nut

(for Use with Mounting Rail TS)

Type SM / SMG

A



#### Ordering Codes

**Hexagon Rail Nut \*SM-\*1-8/1D-\*M-\*W3**

\* Hexagon Rail Nut

Carbon Steel **SM**  
Stainless Steel **SMG**

\* STAUFF Group 1 to 8 (DIN Group 0 to 8) **1-8/1D**

\* Thread code Metric ISO thread **M**  
Unified coarse (UNC) thread **U**

\* Material code Carbon Steel, zinc/nickel-plated **W3**  
Stainless Steel V2A **W4**  
1.4301 / 1.4305 (AISI 304 / 303)  
Stainless Steel V4A **W5**  
1.4401 / 1.4571 (AISI 316 / 316 Ti)

Group STAUFF	DIN	Dimensions (mm/m)						Ordering Codes (Standard Options)
		Thread G	L	B	H1	H2	ØD	
1	0							
1A	1							
2	2							
3	3							
4	4	M6	25,5	10,4	14,2	5,5	12	SM-1-8/1D-M-W3
		1/4-20 UNC	1.00	.41	.56	.22	.47	SM-1-8/1D-U-W3
5	5							
6	6							
7	7							
8	8							

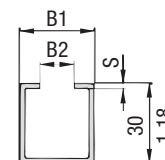
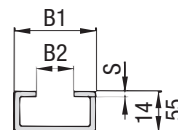
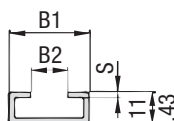
Hexagon Rail Nuts, type SM-1-8/1D are also suitable for Twin Series, STAUFF Group 1D.

All threaded parts are available with Metric ISO thread or unified coarse (UNC) thread according to dimension table. Alternative materials and surface finishings are available upon request. Contact STAUFF for further information.

### Mounting Rail

(for Use with Hexagon Rail Nut SM / SMG)

Type TS



Mounting Rail TS-11

Mounting Rail TS-14

Mounting Rail TS-30

#### Ordering Codes

**Mounting Rail \*TS-\*11-\*1M-\*W1**

\* Mounting Rail

**TS**

\* Height of rail 11 mm / .43 in **11**  
14 mm / .55 in **14**  
30 mm / 1.18 in **30**

\* Length of rail 1 m / 3.28ft **1M**  
2 m / 6.56ft **2M**

Alternative lengths available upon request. Contact STAUFF for further information.

\* Material code Carbon Steel, uncoated **W1**  
Carbon Steel, hot-dip galvanised **W98**  
Stainless Steel V2A **W4**  
1.4301 / 1.4305 (AISI 304 / 303)  
Stainless Steel V4A **W5**  
1.4401 / 1.4571 (AISI 316 / 316 Ti)

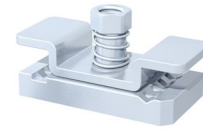
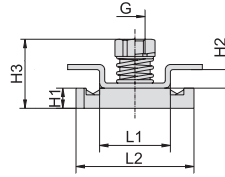
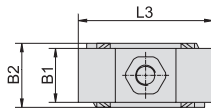
Group STAUFF	DIN	Dimensions (mm/m)			Ordering Codes (Standard Options)	
		B1	B2	S	Length of Rail: 1 m / 3.28ft	Length of Rail: 2 m / 6.56ft
1	0					
1A	1				Height 11 mm / .43 in TS-11-1M-W1	Height 11 mm / .43 in TS-11-2M-W1
2	2					
3	3					
4	4	28	11	2	Height 14 mm / .55 in TS-14-1M-W1	Height 14 mm / .55 in TS-14-2M-W1
		1.10	.43	.08		
5	5					
6	6					
7	7				Height 30 mm / 1.18 in TS-30-1M-W1	Height 30 mm / 1.18 in TS-30-2M-W1
8	8					

Mounting Rails, type TS-11/14/30 are suitable for all Standard Series and Twin Series group sizes. Alternative materials and surface finishings are available upon request. Contact STAUFF for further information.



**Channel Rail Adaptor**  
(for Use with Various Channel Rails)  
**Type CRA**

A



Group STAUFF	DIN	Dimensions (mm/in)									Ordering Codes (Standard Options)	
		Thread G	L1	L2	L3	B1	B2	H1	H2	H3		
1	0											
1A	1											
2	2											
3	3											
4	4	M6	21	35	40	16	19	6	5,5	20,5	CRA-1-8/1D-M-W3 CRA-1-8/1D-U-W3	
		1/4-20 UNC	.83	1.38	1.57	.63	.75	.24	.22	.81		
5	5											
6	6											
7	7											
8	8											

**Ordering Codes**

**Adaptor** \*CRA-\*1-8/1D-\*M-\*W3

- \* Channel Rail Adaptor **CRA**
- \* STAUFF Group 1 to 8 (DIN Group 0 to 8) **1-8/1D**
- \* Thread code Metric ISO thread **M**  
Unified coarse (UNC) thread **U**
- \* Material code Carbon Steel, zinc/nickel-plated **W3**  
Stainless Steel V4A 1.4401 / 1.4571 (AISI 316 / 316 Ti) **W5**

The Channel Rail Adaptor, type CRA 1-8/1D is also suitable for Twin Series, STAUFF Group 1D.

All threaded parts are available with Metric ISO thread or unified coarse (UNC) thread according to dimension table. Alternative materials and surface finishings are available upon request. Contact STAUFF for further information.

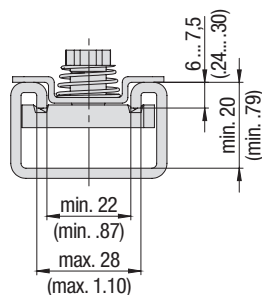


**Compatibility with Channel Rails**

The STAUFF Channel Rail Adaptor, type CRA, is suitable for various channel rails, including the following types:

HALFEN	HILTI	UNISTRUT®	STAUFF (Cushion Clamp Series)
HM 41/41	MQ-21, MQ-41, MQ-52, MQ-72	P1000, P1000T, P1000V, P1000VT, P1001	SCS-048-1-PL, SCS-048-1-GR
HZA 41/22	MQ-21U, MQ-41U, MQ-72U	P2000, P2000T	SCS-120-1-PL, SCS-120-1-GR
HZM 41/41	MQ-21D, MQ-41D, MQ-52-72D	P3003, P3003T, P3300V, P3300VT, P3301	See page 149 for technical information.
HZM 41/22		P4000, P4000T	
HL 41/41, HL 41/B2		P5000, P5000T, P5001, P5500, P5500T, P5501	

Contact STAUFF to check compatibility with additional types of channel rails.



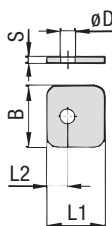
**Basic dimensional requirements for channel rails to be used with STAUFF Channel Rail Adaptors, type CRA**

Dimensional drawings: All dimensions in mm (in).

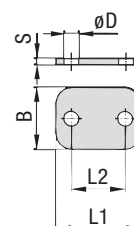


## Cover Plate Type DP

A



STAUFF Group 1



STAUFF Group 1A to 8

### Ordering Codes

#### Cover Plate

**\*DP-\*1-\*W3**

* Cover Plate	DP
* STAUFF Group	1
* Material code	Carbon Steel, zinc/nickel-plated <b>W3</b>
	Stainless Steel V2A <b>W4</b>
	1.4301 / 1.4305 (AISI 304 / 303)
	Stainless Steel V4A <b>W5</b>
	1.4401 / 1.4571 (AISI 316 / 316 Ti)
	Aluminium EN AW-6060 <b>W85</b>

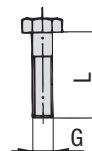
Group STAUFF	DIN	Dimensions (mm/m)					ØD	Ordering Codes (Standard Options)
		L1	L2	B	S			
1	0	28	9,5	30	3	7	DP-1-W3	
		1.10	.37	1.18	.12	.28		
1A	1	34	20	30	3	7	DP-1A-W3	
		1.34	.79	1.18	.12	.28		
2	2	40,5	26	30	3	7	DP-2-W3	
		1.59	1.02	1.18	.12	.28		
3	3	48	33	30	3	7	DP-3-W3	
		1.89	1.30	1.18	.12	.28		
4	4	57	40	30	3	7	DP-4-W3	
		2.24	1.57	1.18	.12	.28		
5	5	70	52	30	3	7	DP-5-W3	
		2.76	2.05	1.18	.12	.28		
6	6	86	66	30	3	7	DP-6-W3	
		3.39	2.60	1.18	.12	.28		
7	7	118	94	30	5	7	DP-7-W3	
		4.65	3.70	1.18	.20	.28		
8	8	144	120	30	5	7	DP-8-W3	
		5.67	4.72	1.18	.20	.28		

Alternative materials and surface finishings are available upon request. Contact STAUFF for further information.

## Hexagon Head Bolt

(for Use with Cover Plate DP)

### Type AS



Hexagon Head Bolt AS (according to DIN 931 / 933 or ANSI / ASME B18.2.1.)

Dimensions applicable only when used with Cover Plate DP

### Ordering Codes

#### Hexagon Head Bolt

**\*AS-\*M6x30-\*W3**

* Type of bolt	Hexagon Head Bolt (according to DIN 931 / 933 or ANSI / ASME B18.2.1.)	<b>AS</b>
* Thread type and size acc. to dimension table	<b>M6x30</b>	
* Material code	Carbon Steel, zinc/nickel-plated <b>W3</b>	
	Stainless Steel V2A <b>W4</b>	
	1.4301 / 1.4305 (AISI 304 / 303)	
	Stainless Steel V4A <b>W5</b>	
	1.4401 / 1.4571 (AISI 316 / 316 Ti)	

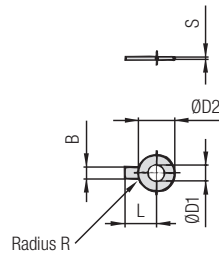
Group STAUFF	DIN	Dimensions (mm/m)		Ordering Codes (Standard Options)
		Thread G x L		
1	0	M6 x 30		AS-M6x30-W3
		1/4-20 UNC x 1-1/4		AS-1/4-20UNCx1-1/4-W3
1A	1	M6 x 30		AS-M6x30-W3
		1/4-20 UNC x 1-1/4		AS-1/4-20UNCx1-1/4-W3
2	2	M6 x 35		AS-M6x35-W3
		1/4-20 UNC x 1-3/8		AS-1/4-20UNCx1-3/8-W3
3	3	M6 x 40		AS-M6x40-W3
		1/4-20 UNC x 1-1/2		AS-1/4-20UNCx1-1/2-W3
4	4	M6 x 45		AS-M6x45-W3
		1/4-20 UNC x 1-7/8		AS-1/4-20UNCx1-7/8-W3
5	5	M6 x 60		AS-M6x60-W3
		1/4-20 UNC x 2-3/8		AS-1/4-20UNCx2-3/8-W3
6	6	M6 x 70		AS-M6x70-W3
		1/4-20 UNC x 2-3/4		AS-1/4-20UNCx2-3/4-W3
7	7	M6 x 100		AS-M6x100-W3
		1/4-20 UNC x 4		AS-1/4-20UNCx4-W3
8	8	M6 x 125		AS-M6x125-W3
		1/4-20 UNC x 4-7/8		AS-1/4-20UNCx4-7/8-W3

All threaded parts are available with Metric ISO thread or unified coarse (UNC) thread according to dimension table. Alternative materials and surface finishings are available upon request. Contact STAUFF for further information.



**Safety Washer**  
(for Use with Hexagon Head Bolt AS)  
Type SI (DIN 93)

A



**Safety Washer SI**

(Bend longer tab down towards the side of the clamp body and one side up towards one of the flats of the hexagon head bolt)

Group STAUFF	DIN	Dimensions (mm/in)						Ordering Codes (Standard Options)
		ØD1	B	ØD2	L	R	S	
1 to 8	0 to 8	6,4	7	19	18	4	0,5	SI-6.4-DIN93-W3
		.25	.28	.75	.71	.16	.02	

Safety Washers, type SI are used as locking devices to prevent Hexagon Head Bolts, type AS from loosening. Safety Washers, type SI are suitable for all Standard Series group sizes.

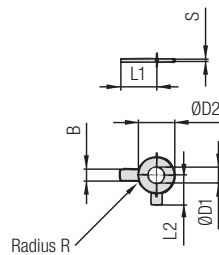
Alternative materials and surface finishings are available upon request. Contact STAUFF for further information.

**Ordering Codes**

**Safety Washer \*SI-\*6.4-\*DIN93-\*W3**

- \* Type of washer Safety washer with 1 tab (according to DIN 93) **SI-6.4-DIN93**
- \* Material code Carbon Steel, zinc/nickel-plated **W3**  
Stainless Steel V4A **W5**  
1.4401 / 1.4571 (AISI 316 / 316 Ti)

**Safety Washer**  
(for Use with Hexagon Head Bolt AS)  
Type SI (DIN 463)



**Safety Washer SI**

(Bend longer tab down towards the side of the clamp body and shorter tab up towards one of the flats of the hexagon head bolt)

Group STAUFF	DIN	Dimensions (mm/in)						Ordering Codes (Standard Options)	
		ØD1	B	ØD2	L1	L2	R		S
1 to 8	0 to 8	6,4	7	12	18	9	4	0,5	SI-6.4-DIN463-W3
		.25	.28	.47	.71	.35	.16	.02	

Safety Washers, type SI are used as locking devices to prevent Hexagon Head Bolts, type AS from loosening. Safety Washers, type SI are suitable for all Standard Series group sizes.

Alternative materials and surface finishings are available upon request. Contact STAUFF for further information.

**Ordering Codes**

**Safety Washer \*SI-\*6.4-\*DIN463-\*W3**

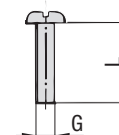
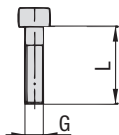
- \* Type of washer Safety washer with 2 tabs (according to DIN 463) **SI-6.4-DIN463**
- \* Material code Carbon Steel, zinc/nickel-plated **W3**  
Stainless Steel V4A **W5**  
1.4401 / 1.4571 (AISI 316 / 316 Ti)





**Socket Cap Screw**   **Slotted Head Screw**  
**Type IS**   **Type LI**

A



**Socket Cap Screw IS**

(according to ISO 4762 or ANSI / ASME B18.3)

Dimensions applicable only when used without Cover Plate DP

**Slotted Head Screw LI**

(according to ISO 1207 or ANSI / ASME B18.6.3)

Dimensions applicable only when used without Cover Plate DP

**Ordering Codes**

**Socket Cap Screw**   **\*IS-\*M6x30-\*W3**  
**Slotted Head Screw**   **\*LI-\*M6x30-\*W3**

\* Type of bolt   Socket Cap Screw (according to ISO 4762 or ANSI / ASME B18.3)   **IS**  
Slotted Head Screw (according to ISO 1207 or ANSI / ASME B18.6.3)   **LI**

Please note:   Socket cap screws IS and slotted head screws LI have to be used in conjunction with washers US, which are available separately.

\* Thread type and size acc. to dimension table   **M6x30**

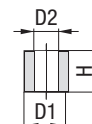
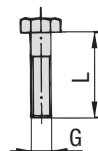
\* Material code   Carbon Steel, zinc/nickel-plated   **W3**  
Stainless Steel V2A   **W4**  
1.4301 / 1.4305 (AISI 304 / 303)  
Stainless Steel V4A   **W5**  
1.4401 / 1.4571 (AISI 316 / 316 Ti)

Group STAUFF	DIN	Dimensions (mm/in) Thread G x L	Ordering Codes (Standard Options)	
			Socket Cap Screws	Slotted Head Screws
1	0	M6 x 20	IS-M6x20-W3	LI-M6x20-W3
		1/4-20 UNC x 3/4	IS-1/4-20UNCx3/4-W3	LI-1/4-20UNCx3/4-W3
1A	1	M6 x 20	IS-M6x20-W3	LI-M6x20-W3
		1/4-20 UNC x 3/4	IS-1/4-20UNCx3/4-W3	LI-1/4-20UNCx3/4-W3
2	2	M6 x 25	IS-M6x25-W3	LI-M6x25-W3
		1/4-20 UNC x 1	IS-1/4-20UNCx1-W3	LI-1/4-20UNCx1-W3
3	3	M6 x 30	IS-M6x30-W3	LI-M6x30-W3
		1/4-20 UNC x 1-1/8	IS-1/4-20UNCx1-1/8-W3	LI-1/4-20UNCx1-1/8-W3
4	4	M6 x 35	IS-M6x35-W3	LI-M6x35-W3
		1/4-20 UNC x 1-3/8	IS-1/4-20UNCx1-3/8-W3	LI-1/4-20UNCx1-3/8-W3
5	5	M6 x 50	IS-M6x50-W3	LI-M6x50-W3
		1/4-20 UNC x 2	IS-1/4-20UNCx2-W3	LI-1/4-20UNCx2-W3
6	6	M6 x 60	IS-M6x60-W3	LI-M6x60-W3
		1/4-20 UNC x 2-1/2	IS-1/4-20UNCx2-1/2-W3	LI-1/4-20UNCx2-1/2-W3
7	7	M6 x 90	IS-M6x90-W3	ON REQUEST ONLY
		1/4-20 UNC x 3-3/8	IS-1/4-20UNCx3-3/8-W3	
8	8	M6 x 110	IS-M6x110-W3	ON REQUEST ONLY
		1/4-20 UNC x 4-3/8	IS-1/4-20UNCx4-3/8-W3	

All threaded parts are available with Metric ISO thread or unified coarse (UNC) thread according to dimension table. Alternative materials and surface finishings are available upon request. Contact STAUFF for further information.

**Hexagon Head Bolt**  
**Type AS**

**Insert**  
**Type ES / EP**



**Hexagon Head Bolt AS**

(according to DIN 931 / 933 or ANSI / ASME B18.2.1.)

Dimensions applicable only when used with Inserts EP / ES

**Insert EP (Polypropylene)**

**Insert ES-W3 (Steel, zinc/nickel-plated)**

**Insert ES-W5 (Stainless Steel V4A)**

**Ordering Codes**

**Hexagon Head Bolt**   **\*AS-\*M6x27-\*W3**

\* Type of bolt   Hexagon Head Bolt (according to DIN 931 / 933 or ANSI / ASME B18.2.1.)   **AS**

\* Thread type and size acc. to dimension table   **M6x27**

\* Material code   Carbon Steel, zinc/nickel-plated   **W3**  
Stainless Steel V2A   **W4**  
1.4301 / 1.4305 (AISI 304 / 303)  
Stainless Steel V4A   **W5**  
1.4401 / 1.4571 (AISI 316 / 316 Ti)

Group STAUFF	DIN	Dimensions (mm/in) Thread G x L	Ordering Codes (Standard Options)	
			AS	AS
1	0	M6 x 27	AS-M6x27-W3	
		1/4-20 UNC x 1-1/8	AS-1/4-20UNCx1-1/8-W3	
1A	1	M6 x 27	AS-M6x27-W3	
		1/4-20 UNC x 1-1/8	AS-1/4-20UNCx1-1/8-W3	
2	2	M6 x 32	AS-M6x32-W3	
		1/4-20 UNC x 1-3/8	AS-1/4-20UNCx1-3/8-W3	
3	3	M6 x 35	AS-M6x35-W3	
		1/4-20 UNC x 1-3/8	AS-1/4-20UNCx1-3/8-W3	
4	4	M6 x 42	AS-M6x42-W3	
		1/4-20 UNC x 1-5/8	AS-1/4-20UNCx1-5/8-W3	
5	5	M6 x 57	AS-M6x57-W3	
		1/4-20 UNC x 2-3/8	AS-1/4-20UNC-2-3/8-W3	
6	6	M6 x 65	AS-M6x65-W3	
		1/4-20 UNC x 2-3/4	AS-1/4-20UNCx2-3/4-W3	
7	7	M6 x 95	AS-M6x95-W3	
		1/4-20 UNC x 4	AS-1/4-20UNCx4-W3	
8	8	M6 x 118	AS-M6x118-W3	
		1/4-20 UNC x 4-3/4	AS-1/4-20UNCx4-3/4-W3	

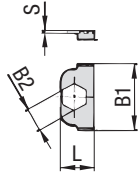
Group STAUFF	DIN	Dimensions (mm/in)				Ordering Codes (Standard Options)	
		D1	D2	H ES	H EP	ES-W3	EP
1 to 8	0 to 8	11,8 .46	6,5 .26	7,8 .31	8,6 .34	ES-W3	EP

All threaded parts are available with Metric ISO thread or unified coarse (UNC) thread according to dimension table. Alternative materials and surface finishings are available upon request. Contact STAUFF for further information.

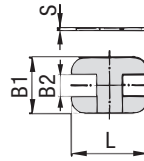


**Safety Locking Plate**  
(for Use with Stacking Bolt AF)  
**Type SIG**

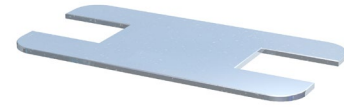
A



STAUFF Group 1



STAUFF Group 1A to 8



Group STAUFF	DIN	Dimensions (mm/in)				Ordering Codes (Standard Options)
		L	B1	B2	S	
1	0	16	32	11,2	1	SIG-1-W3
		.63	1.26	.44	.04	
1A	1	33	28	11,2	1	SIG-1A-W3
		1.30	1.10	.44	.04	
2	2	39	28	11,2	1	SIG-2-W3
		1.54	1.10	.44	.04	
3	3	47	28	11,2	1	SIG-3-W3
		1.85	1.10	.44	.04	
4	4	56	28	11,2	1	SIG-4-W3
		2.20	1.10	.44	.04	
5	5	69	28	11,2	1	SIG-5-W3
		2.72	1.10	.44	.04	
6	6	85	28	11,2	1	SIG-6-W3
		3.35	1.10	.44	.04	
7	7	117	28	11,2	1	SIG-7-W3
		4.61	1.10	.44	.04	
8	8	143	28	11,2	1	SIG-8-W3
		5.63	1.10	.44	.04	

**Ordering Codes**

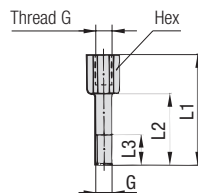
**Safety Locking Plate**

**\*SIG-\*1-\*W3**

* Safety Locking Plate		<b>SIG</b>
* STAUFF Group		<b>1</b>
* Material code	Carbon Steel, zinc/nickel-plated	<b>W3</b>
	Stainless Steel V2A	<b>W4</b>
	1.4301 / 1.4305 (AISI 304 / 303)	
	Stainless Steel V4A	<b>W5</b>
	1.4401 / 1.4571 (AISI 316 / 316 Ti)	

Alternative materials and surface finishings are available upon request. Contact STAUFF for further information.

**Stacking Bolt**  
(for Use with Safety Locking Plate SIG)  
**Type AF**



Group STAUFF	DIN	Dimensions (mm/in)					Ordering Codes (Standard Options)
		Thread G	L1	L2	L3 min.	Hex	
1	0	M6	34	20	12	11	AF-1-M-W3
		1/4-20 UNC	1.34	.79	.47	.43	AF-1-U-W3
1A	1	M6	34	20	12	11	AF-1A-M-W3
		1/4-20 UNC	1.34	.79	.47	.43	AF-1A-U-W3
2	2	M6	40	25	12	11	AF-2-M-W3
		1/4-20 UNC	1.57	.98	.47	.43	AF-2-U-W3
3	3	M6	44	30	12	11	AF-3-M-W3
		1/4-20 UNC	1.73	1.18	.47	.43	AF-3-U-W3
4	4	M6	49	35	12	11	AF-4-M-W3
		1/4-20 UNC	1.93	1.38	.47	.43	AF-4-U-W3
5	5	M6	64	50	12	11	AF-5-M-W3
		1/4-20 UNC	2.52	1.97	.47	.43	AF-5-U-W3
6	6	M6	74	60	12	11	AF-6-M-W3
		1/4-20 UNC	2.91	2.36	.47	.43	AF-6-U-W3
7	7	M6	99	85	12	11	AF-7-M-W3
		1/4-20 UNC	3.90	3.35	.47	.43	AF-7-U-W3
8	8	M6	124	110	12	11	AF-8-M-W3
		1/4-20 UNC	4.88	4.33	.47	.43	AF-8-U-W3

**Ordering Codes**

**Stacking Bolt**

**\*AF-\*1-\*M-\*W3**

* Type of bolt	Stacking Bolt (according to STAUFF Standard)	<b>AF</b>
* STAUFF Group		<b>1</b>
* Thread code	Metric ISO thread	<b>M</b>
	Unified coarse (UNC) thread	<b>U</b>
* Material code	Carbon Steel, zinc/nickel-plated	<b>W3</b>
	Stainless Steel V2A	<b>W4</b>
	1.4301 / 1.4305 (AISI 304 / 303)	
	Stainless Steel V4A	<b>W5</b>
	1.4401 / 1.4571 (AISI 316 / 316 Ti)	

All threaded parts are available with Metric ISO thread or unified coarse (UNC) thread according to dimension table. Alternative materials and surface finishings are available upon request. Contact STAUFF for further information.



A



### ① Type of Installation

Please select the type of installation (e.g. Weld Plates, Rail Nuts etc.) and add the corresponding Code to position ① of the order code for your clamp assembly.

Without Installation Equipment  
Code: **none**

#### Installation on Weld Plate

Single Weld Plate  
Code: **SP**

Elongated Weld Plate  
Code: **SPV**

Twin Weld Plate (for STAUFF Group 1 to 6 only)  
Code: **DSP**

Group Weld Plate (for STAUFF Group 1 to 6 only)  
Code: **RAP**

Angled Weld Plate (for STAUFF Group 1 to 6 only)  
Code: **WSP**

Bridge Weld Plate (for STAUFF Group 1A to 6 only)  
Code: **BSP**

#### Installation on Mounting / Channel Rail

Hexagon Rail Nut  
Code: **SM** (Carbon Steel)  
Code: **SMG** (Stainless Steel)

Channel Rail Adaptor  
Code: **CRA**

### ② Group Size & Diameter

Please select the required group size and diameter and add the corresponding Code to position ② of the order code for your clamp assembly.

Group STAUFF (DIN)	Outside Diameter P / T / H (mm)	Availability of Clamp Body Materials & Designs			Code
		Profiled Design	Type H	Type RI	
1 (0)	6	●	●	○	106
	6,4	●	●	○	106.4
	8	●	●	○	108
	9,5	●	●	○	109.5
	10	●	●	○	110
1A (1)	12	●	●	○	112
	6	●	●	○	106A
	6,4	●	●	○	106.4A
	8	●	●	○	108A
	9,5	●	●	○	109.5A
2 (2)	10	●	●	○	110A
	12	●	●	○	112A
	12,7	●	●	○	212.7
	13,5	●	●	○	213.5
	14	●	●	○	214
	15	●	●	○	215
	16	●	●	○	216
3 (3)	17,2	●	●	○	217.2
	18	●	●	○	218
	19	●	●	○	319
	20	●	●	○	320
	21,3	●	●	○	321.3
	22	●	●	○	322
	25	●	●	○	325
4 (4)	25,4	●	●	○	325.4
	6	○	○	●	406
	8	○	○	●	408
	10	○	○	●	410
	12	○	○	●	412
	12,7	○	○	●	412.7
	14	○	○	●	414
	15	○	○	●	415
	16	○	○	●	416
	17,2	○	○	●	417.2
	18	○	○	●	418
	19	○	○	●	419
	26,9	●	●	○	426.9
	28	●	●	○	428
	28,6	●	○	○	428.6
	30	●	●	○	430
	32	●	●	○	432

Group STAUFF (DIN)	Outside Diameter P / T / H (mm)	Availability of Clamp Body Materials & Designs			Code	
		Profiled Design	Type H	Type RI		
5 (5)	32	●	●	○	532	
	33,7	●	●	○	533.7	
	35	●	●	○	535	
	38	●	●	○	538	
	40	●	●	○	540	
	41,3	●	○	○	541.3	
	42	●	●	○	542	
	6 (6)	20	○	○	●	620
		21,3	○	○	●	621.3
		22	○	○	●	622
25		○	○	●	625	
26,9		○	○	●	626.9	
28		○	○	●	628	
30		○	○	●	630	
32		○	○	●	632	
44,5		●	●	○	644.5	
48,3		●	●	○	648.3	
7 (7)	50,8	●	●	○	650.8	
	54	●	●	○	654	
	57,2	●	●	○	757.2	
	60,3	●	●	○	760.3	
	63,5	●	●	○	763.5	
	70	●	●	○	770	
	73	●	●	○	773	
	76,1	●	●	○	776.1	
	8 (8)	88,9	●	●	○	888.9
		102	●	●	○	8102L

● Standard Option



Please see pages 32 and 33 with detailed order examples for some of the most popular Standard Series clamp assemblies.

### ③ Clamp Body Design & Material

Please select the design and material of your clamp body and add the corresponding **Code** to position ③ of the order code for your clamp assembly.

Please check the availability of the selected clamp body design and material according to the matrix table in ②.

#### Profiled Design



Polypropylene  
Code: **PP**



Polypropylene (Colour: Black)  
Code: **PP-BK**



Polyamide  
Code: **PA**



Thermoplastic Elastomer (87 Shore-A)  
Code: **SA**



Aluminium  
Code: **AL** (for STAUFF Group 1A to 6 only)

#### Type H (Smooth)



Polypropylene  
Code: **PP-H**



Polypropylene (Colour: Black)  
Code: **PP-H-BK**



Polyamide  
Code: **PA-H**



Thermoplastic Elastomer (87 Shore-A)  
Code: **SA-H**

#### Type RI (with Elastomer Insert)



Polypropylene  
Code: **PP-R** (for STAUFF Group 4 and 6 only)



Polyamide  
Code: **PA-R** (for STAUFF Group 4 and 6 only)

See pages 154 / 155 for material properties and technical information.

Please contact STAUFF for further details on fire-proof clamp body materials, tested and approved according to several international fire-protection standards.

### ④ Mounting & Fitting Combination

Please select the mounting and fitting combination (e.g. bolts, screws, cover plates etc.) and add the corresponding **Code** to position ④ of the order code for your clamp assembly.

#### Installation with Cover Plate and Bolts

Cover Plate DP with  
Hexagon Head Bolts AS  
Code: **DP-AS**

Cover Plate DP with  
Socket Cap Screws IS\*  
Code: **DP-IS**

#### Installation with Locking Plate and Bolts

Safety Locking Plate SIG with  
Stacking Bolts AF  
Code: **SIG-AF**

#### Installation with Inserts and Bolts

Inserts EP (Plastic) with  
Hexagon Head Bolts AS  
Code: **EP-AS**

Inserts ES (Steel) with  
Hexagon Head Bolts AS  
Code: **ES-AS**

#### Installation with Bolts only

Socket Cap Screws IS (Washers US included)  
Code: **IS**

Slotted Head Screws LI (Washers US included)  
Code: **LI** (for STAUFF Group 1 to 6 only)

\* Special lengths of Socket Cap Screws IS required. For exact lengths, please see details of Hexagon Head Bolt, type AS (for use with Cover Plates DP) on page 26.

### ⑤ Thread Type

Please select the required thread type and add the corresponding **Code** to position ⑤ of the order code for your clamp assembly.

Metric ISO thread  
Code: **M**

Unified coarse (UNC) thread  
Code: **U**

All threaded parts are available with Metric ISO thread or unified coarse (UNC) thread according to dimension table.

### ⑥ Material & Surface Finishing

Please select the required material & surface finishing of the metal parts and add the corresponding **Code** to position ⑥ of the order code for your clamp assembly.

Metal parts made of Carbon Steel, zinc/nickel-plated **W3**

Metal parts made of Stainless Steel V2A  
1.4301 / 1.4305 (AISI 304 / 303) **W4**

Metal parts made of Stainless Steel V4A  
1.4401 / 1.4571 (AISI 316 / 316 Ti) **W5**

Weld Plate made of Carbon Steel, phosphated; Other metal parts made of Carbon Steel, zinc/nickel-plated **W10**

Individual combinations of alternative materials and surface finishings are available upon request. Contact STAUFF for further information.

### ⑦ Assembling & Kitting

If required, please select an additional assembling and kitting option and add the corresponding **Code** to the last position of the order code for your clamp assembly.

**Components supplied separately**  
Code: **none** (standard option)

**Components assembled**  
Code: **A** (special option)

**Components packed in kits**  
Code: **K** (special option)



A



- 2x **Hexagon Head Bolt**  
Surface: W3  
Thread: Metric
- 1x **Cover Plate**  
Surface: W3
- 1x **Clamp Body** (two halves)  
STAUFF Group 2 (DIN 2)  
O.D. 12,7 mm / .50 in  
Material: Polypropylene  
Profiled inside surface  
with tension clearance
- 1x **Single Weld Plate**  
Surface: W2  
Thread: Metric

**Order Code**

**SP-212.7-PP-DP-AS-M-W10**

W10 is the standard option for this type of installation.



- 2x **Socket Cap Screw**  
with Washer  
Surface: W3  
Thread: Metric
- 1x **Clamp Body** (two halves)  
STAUFF Group 2 (DIN 2)  
O.D. 12,7 mm / .50 in  
Material: Polypropylene  
Profiled inside surface  
with tension clearance
- 1x **Single Weld Plate**  
Surface: W2  
Thread: Metric

**Order Code**

**SP-212.7-PP-IS-M-W10**

W10 is the standard option for this type of installation.



- 2x **Slotted Head Screw**  
with Washer  
Surface: W3  
Thread: Metric
- 1x **Clamp Body** (two halves)  
STAUFF Group 2 (DIN 2)  
O.D. 12,7 mm / .50 in  
Material: Polypropylene  
Profiled inside surface  
with tension clearance
- 1x **Single Weld Plate**  
Surface: W2  
Thread: Metric

**Order Code**

**SP-212.7-PP-LI-M-W10**

W10 is the standard option for this type of installation.  
Available up to STAUFF Group 6 (DIN Group 6) only.



- 2x **Hexagon Head Bolt**  
Surface: W3  
Thread: Metric
- 1x **Cover Plate**  
Surface: W3
- 1x **Clamp Body** (two halves)  
STAUFF Group 2 (DIN 2)  
O.D. 12,7 mm / .50 in  
Material: Polypropylene  
Profiled inside surface  
with tension clearance
- 1x **Elongated Weld Plate**  
Surface: W2  
Thread: Metric

**Order Code**

**SPV-212.7-PP-DP-AS-M-W10**

W10 is the standard option for this type of installation.



- 2x **Socket Cap Screw**  
with Washer  
Surface: W3  
Thread: Metric
- 1x **Clamp Body** (two halves)  
STAUFF Group 2 (DIN 2)  
O.D. 12,7 mm / .50 in  
Material: Polypropylene  
Profiled inside surface  
with tension clearance
- 1x **Elongated Weld Plate**  
Surface: W2  
Thread: Metric

**Order Code**

**SPV-212.7-PP-IS-M-W10**

W10 is the standard option for this type of installation.



- 2x **Slotted Head Screw**  
with Washer  
Surface: W3  
Thread: Metric
- 1x **Clamp Body** (two halves)  
STAUFF Group 2 (DIN 2)  
O.D. 12,7 mm / .50 in  
Material: Polypropylene  
Profiled inside surface  
with tension clearance
- 1x **Elongated Weld Plate**  
Surface: W2  
Thread: Metric

**Order Code**

**SPV-212.7-PP-LI-M-W10**

W10 is the standard option for this type of installation.  
Available up to STAUFF Group 6 (DIN Group 6) only.



- 2x **Hexagon Head Bolt**  
Surface: W3  
Thread: Metric
- 1x **Cover Plate**  
Surface: W3
- 1x **Clamp Body** (two halves)  
STAUFF Group 2 (DIN 2)  
O.D. 12,7 mm / .50 in  
Material: Polypropylene  
Profiled inside surface  
with tension clearance
- 2x **Hexagon Rail Nut**  
Surface: W3  
Thread: Metric

**Order Code** (Mounting Rail TS not included.)

**SM-212.7-PP-DP-AS-M-W3**

W3 is the standard option for this type of installation.



- 2x **Socket Cap Screw**  
with Washer  
Surface: W3  
Thread: Metric
- 1x **Clamp Body** (two halves)  
STAUFF Group 2 (DIN 2)  
O.D. 12,7 mm / .50 in  
Material: Polypropylene  
Profiled inside surface  
with tension clearance
- 2x **Hexagon Rail Nut**  
Surface: W3  
Thread: Metric

**Order Code** (Mounting Rail TS not included.)

**SM-212.7-PP-IS-M-W3**

W3 is the standard option for this type of installation.



- 2x **Slotted Head Screw**  
with Washer  
Surface: W3  
Thread: Metric
- 1x **Clamp Body** (two halves)  
STAUFF Group 2 (DIN 2)  
O.D. 12,7 mm / .50 in  
Material: Polypropylene  
Profiled inside surface  
with tension clearance
- 2x **Hexagon Rail Nut**  
Surface: W3  
Thread: Metric

**Order Code** (Mounting Rail TS not included.)

**SM-212.7-PP-LI-M-W3**

W3 is the standard option for this type of installation.  
Available up to STAUFF Group 6 (DIN Group 6) only.





- 2x **Hexagon Head Bolt**  
Surface: W3  
Thread: Metric
- 1x **Cover Plate**  
Surface: W3
- 1x **Clamp Body** (two halves)  
STAUFF Group 2 (DIN 2)  
O.D. 12,7 mm / .50 in  
Material: Polypropylene  
Profiled inside surface  
with tension clearance

**Order Code**

**212.7-PP-DP-AS-M-W3**

W3 is the standard option for this type of installation.



- 2x **Socket Cap Screw**  
with Washer  
Surface: W3  
Thread: Metric
- 1x **Clamp Body** (two halves)  
STAUFF Group 2 (DIN 2)  
O.D. 12,7 mm / .50 in  
Material: Polypropylene  
Profiled inside surface  
with tension clearance

**Order Code**

**212.7-PP-IS-M-W3**

W3 is the standard option for this type of installation.

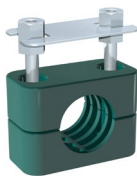


- 2x **Slotted Head Screw**  
with Washer  
Surface: W3  
Thread: Metric
- 1x **Clamp Body** (two halves)  
STAUFF Group 2 (DIN 2)  
Tube-O.D. 12,7 mm / .50 in  
Material: Polypropylene  
Profiled inside surface  
with tension clearance

**Order Code**

**212.7-PP-LI-M-W3**

W3 is the standard option for this type of installation.



- 2x **Stacking Bolt**  
Surface: W3  
Thread: Metric
- 1x **Safety Locking Plate**  
Surface: W3
- 1x **Clamp Body** (two halves)  
STAUFF Group 2 (DIN 2)  
O.D. 12,7 mm / .50 in  
Material: Polypropylene  
Profiled inside surface  
with tension clearance

**Order Code**

**212.7-PP-SIG-AF-M-W3**

W3 is the standard option for this type of installation.



- 1x **Socket Cap Screw**  
with Washer  
Surface: W3  
Thread: Metric
- 1x **Clamp Body** (two halves)  
STAUFF Group 1 (DIN 0)  
O.D. 6 mm / .24 in  
Material: Polypropylene  
Profiled inside surface  
with tension clearance  
Thread: Metric

**Order Code\***

**SP-106-PP-IS-M-W10**

W10 is the standard option for this type of installation.

- 1x **Single Weld Plate**  
Surface: W2  
Thread: Metric

**Thread codes**

All threaded parts are available with Metric ISO thread or unified coarse (UNC) thread according to dimension table.

Metric ISO thread	<b>M</b>
Unified coarse (UNC) thread	<b>U</b>

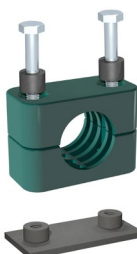
**Material codes**

The below listed material codes describe the materials and surface finishings of metal parts that are most relevant for Standard Series clamp assemblies. Individual combinations of alternative materials and surface finishings are available upon request. Contact STAUFF for further information.

Metal parts made of Carbon Steel, zinc/nickel-plated	<b>W3</b>
Metal parts made of Stainless Steel V2A 1.4301 / 1.4305 (AISI 304 / 303)	<b>W4</b>
Metal parts made of Stainless Steel V4A 1.4401 / 1.4571 (AISI 316 / 316 Ti)	<b>W5</b>
Weld Plate made of Carbon Steel, phosphated; Other metal parts made of Carbon Steel, zinc/nickel-plated	<b>W10</b>

**Technical Notes**

\* Because of their design, STAUFF Group 1 (DIN Group 0) clamp assemblies only include one single bolt / screw.

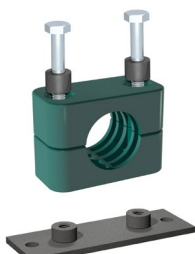


- 2x **Hexagon Head Bolt**  
Surface: W3  
Thread: Metric
- 2x **Insert**  
Material: Plastic
- 1x **Clamp Body** (two halves)  
STAUFF Group 2 (DIN 2)  
O.D. 12,7 mm / .50 in  
Material: Polypropylene  
Profiled inside surface  
with tension clearance
- 1x **Single Weld Plate**  
Surface: W2  
Thread: Metric

**Order Code**

**SP-212.7-PP-EP-AS-M-W10**

W10 is the standard option for this type of installation.



- 2x **Hexagon Head Bolt**  
Surface: W3  
Thread: Metric
- 2x **Insert**  
Material: Plastic
- 1x **Clamp Body** (two halves)  
STAUFF Group 2 (DIN 2)  
O.D. 12,7 mm / .50 in  
Material: Polypropylene  
Profiled inside surface  
with tension clearance
- 1x **Elongated Weld Plate**  
Surface: W2  
Thread: Metric

**Order Code**

**SPV-212.7-PP-EP-AS-M-W10**

W10 is the standard option for this type of installation.

