

Clark County Library Performing Arts Center Venue Information Packet

[1401 E. Flamingo Rd](#)

[Las Vegas, NV 89119](#)

For more information or to inquire about rental opportunities, please contact:

Suzanne Scott

702.507.3459

Performing Arts Center Coordinator

scotts@lvcclld.org



About Us

The Las Vegas-Clark County Library District nurtures the social, economic, and educational well-being of people and communities. The Library District is committed to building communities of people who can come together to pursue their individual and group aspirations.

The Library District has 25 branches, serving 1.6 million people over 8,000 square miles.

We welcome over 650,000 people to 21,000 library-sponsored and community events each year.

Programming and Venues Department (PVS)

The PVS Department coordinates the use of our venues via partnerships and rentals. We partner with other government entities and non-profit institutions to present free and open public programs without solicitation or commercial intent, that align with the Library District's strategic framework. All PVS facilities are available to rent on a first-come, first-served basis.

Our six performing arts centers, all with dedicated sound, lighting and projection equipment, are unique spaces offering varying performance options and seating capacities: Clark County (399 seats), Summerlin (283 seats), West Charleston (276 seats), West Las Vegas (295 seats), Whitney (198 seats) and Windmill (294 seats). The rental rate is \$40 per hour, with additional fees for technicians, security, and insurance (through a separate vendor). Reservations are accepted up to one year in advance.

Our 21 meeting Rooms at 14 library branches can accommodate up to 300 people. All of the meeting rooms have tables and chairs, and many feature audio-visual equipment. The rental rate is \$30 per hour, and reservations can be made up to six months in advance on our website (www.lvccld.org), or in person at any library branch.

Clark County Library Main Theater

The Clark County Library Main Theater is a thrust theater with 399 seats. It features a Kawai grand piano, a Panasonic PT-DX100 projector with 10,000 ANSI Lumens and a 10' x 20' projection screen, 30 padded folding orchestra chairs, and 30 music stands. This facility is well suited for movie screenings, lectures, music performances, dance productions, and theatrical productions that do not require a fly loft.

The Clark County Library is located at 1401 E. Flamingo Road, minutes from McCarran International Airport, Interstate 15, and the Las Vegas Strip. Adjacent to the performing arts center (PAC) at the Clark County Library is a black box/dance studio Paul C. Blau Theatre and a large conference room.

Clark County Library Performing Arts Center Venue Quick Reference

SEATING CAPACITY

399

ADA COMPLIANCE

4 Wheelchair accessible spaces
Assistive listening system

STAGE DIMENSIONS

Proscenium opening – 34'-6" W x 22'-0"H
Width of thrust – 24'-4"
Length of thrust – 12'-0"
Plaster line to edge of thrust - 16'-1"
Plaster line to cyclorama –13'-0"
Total depth of stage – 53'-5"
Deck height above house floor – 1'-10 ¼"

STAGE FLOOR

No traps
No penetrations allowed
No dance floor available

DRESSING ROOMS & GREEN ROOM

2 Principal dressing rooms w/bathtub-shower
2 Chorus dressing rooms w/shower
(Chorus dressing rooms can be combined)
Green room includes refrigerator, microwave,
vending machine, couch, 2 love seats, 2
tables, 6 chairs, & 1 Yamaha upright piano

WARDROBE

Washer/dryer facility on site

PIANO

1 Kawai RX-7 grand piano

MISCELLANEOUS EQUIPMENT

30 Padded folding orchestra chairs
30 Music stands
20 Music stand lights
7 ClearCom communication units
3 Wenger Tourmaster 3-step choral risers
1 Conductor podium and music stand

CONTROL BOOTH

Elevated booth located at back of house

LOADING DOCK & SHOP INFO

Width of shop – 25'-6"
Length of shop – 46'-6"
Dock roll up door - 12'-0" W x 16'-7" H
Height of dock – 2'-9 ½"

RIGGING SYSTEM

5 Dead-hung battens
5 Motorized battens
Dead-hung masking
Dead-hung main traveler drape (center-draw)
Dead-hung up stage traveler (center-draw)
Dead-hung cyclorama

SOFT GOODS & BACK DROP INFO

Main drape - 27'-0" W x 25'-0" H
Legs/travelers (2 sets) – 27'-0" W x 25'-0" H
Cyclorama – 52'-0" W x 25'-4" H

Table of Contents

Fee Schedule	5
Performing Arts Center Specifications	6
Front of House	9
Load In Area	12
Green Room	13
Dressing Rooms	14
Sound	15
Sound Inventory	15
Input/Output Patch Information	17
Projections	21
Projections Inventory	21
Lighting	22
Lighting Inventory	22
Magic Sheet	24
Rules & Policies	26
Local Services	27
Map & Directions	28

Fee Schedule

Rental and service fees apply to uses for which the Library District is not the presenting organization. All rental fees have been adopted by Las Vegas-Clark County Library District's Board of Trustees.

PERFORMING ARTS CENTER RENTAL FEE - \$40/Hour

The Performing Arts Center Rental Fee is \$40.00 per hour with a two-hour minimum. Reservations are accepted on a first-come, first-served basis by written application up to one year in advance.

STORAGE AND DARK DAY FEE - \$70/Day

The Storage and Dark Day Fee is \$70.00 per day and will be assessed anytime the venue is left unoccupied or equipment is left in the venue, while the rental organization is not actively using the venue. This charge is only applicable to groups who occupy the venue for longer than two consecutive weeks.

TECHNICAL SERVICES FEE - \$40/Hour per Technician

At least one technician is required to be in the venue whenever it is scheduled to be in use. Only Library District technicians and pre-approved individuals may operate performing arts center equipment. More than one technician may be required to be in the venue depending on the scope and needs of the event. The Technical Services Fee is \$40.00 per hour, per technician with a two-hour minimum for each technician.

Overtime charges will be assessed should the technicians be required to stay on site for more than eight hours in a single day. The Technical Services Overtime Rate is \$52.00 per hour.

SECURITY SERVICES FEE - \$15/Hour

Any rentals that use the space before or after normal library hours will be required to have a security guard on the premises. The Security Services Fee is \$15.00 per hour for a single security guard with a four-hour minimum.

CLEANING AND JANITORIAL SERVICES FEE - \$50/Cleaning

Any rentals that require excessive cleaning after an event is over will be assessed an additional Cleaning and Janitorial Services Fee at a minimum of \$50.00 per cleaning.

PIANO TUNING FEE – Approximately \$125/Tuning

The on-site piano is tuned every six months but can be tuned at the request of the rental organization. Tuning may only be performed by a Library District-approved piano tuner. The tuner determines the rate of the Piano Tuning Fee (usually \$125.00 per tuning) and requires a minimum of two weeks' notice.

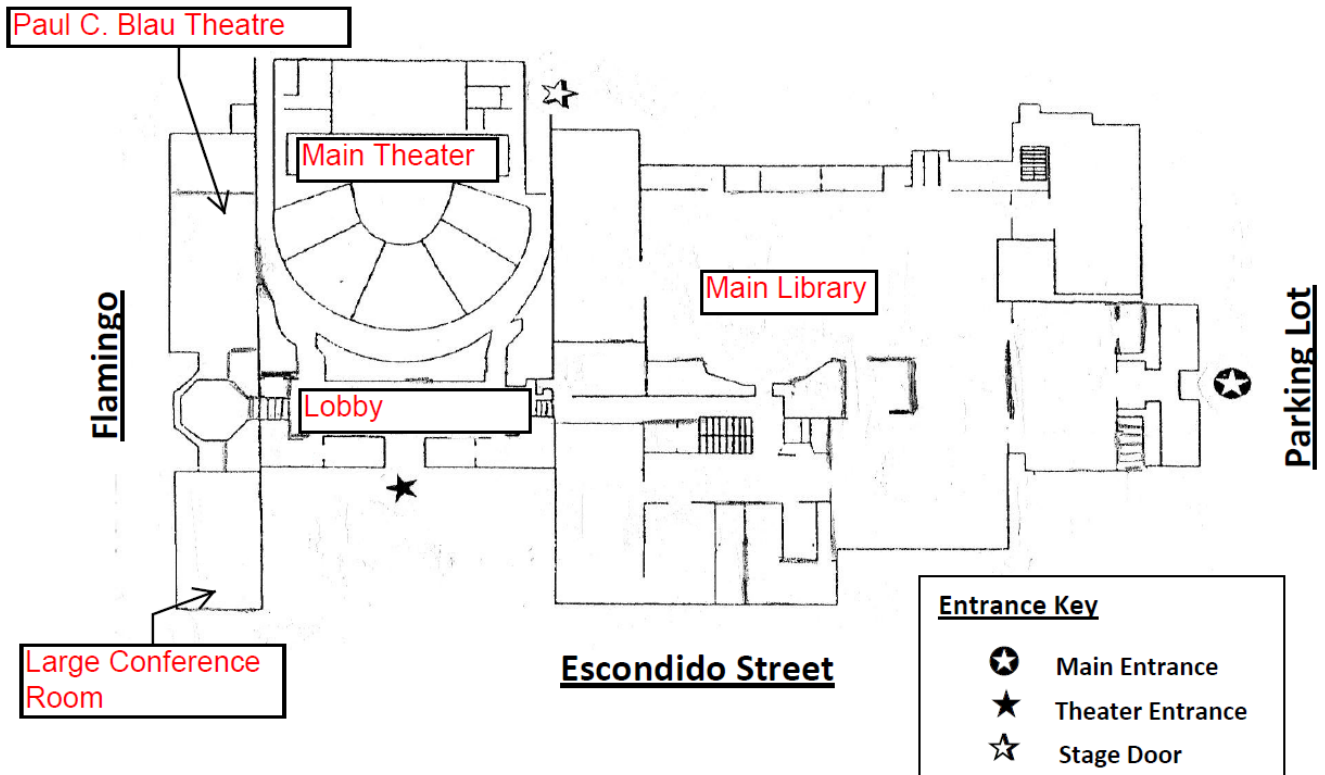
INSURANCE

The Library District requires that the rental organization obtain commercial general liability insurance (through a separate vendor) during performing arts center rentals. The Performing Arts Center Coordinator can provide you with the mandatory insurance requirements.

Performing Arts Center Specifications

PERFORMING ARTS CENTER GROUND PLAN

Drawing Not to Scale





STAGE DIMENSIONS

Proscenium opening – 34'-6" W x 22'-0"H
Width of thrust – 24'-4"
Length of thrust – 12'-0"
Plaster line to edge of thrust – 16'-1"
Plaster line to cyclorama – 13'-0"
Total depth of stage – 53'-5"
Deck height above house floor – 1'-10 ¼"

BACKDROP INFORMATION

Pipe width end-to-end – 52'-0"

RIGGING SYSTEM

The Clark County Main Theater has five motorized battens. Scenery and backdrops cannot be hung on any other soft good pipes or electrics. Motorized battens cannot be operated during performances. There is a motorized retractable front projection screen (20'-0"W x 10'-0"H) positioned 12" downstage of the main drape.

MASKING SYSTEM

The stage masking is dead hung and includes: a main drape (which can travel and is operated from downstage left on stage level), two sets of legs and borders, and an upstage curtain (which can travel and is operated from upstage left on stage level).

CONTROL BOOTH

Lighting, sound, and projection controls are located in an elevated booth at the rear of the house. The sound booth has one roll-down window which is open during events; the light booth has a clear sealed window. These allow the technicians to hear and see performances clearly. This is a partially open booth, and therefore, is not soundproof.



Lighting Control Booth



Sound Control Booth

Front of House

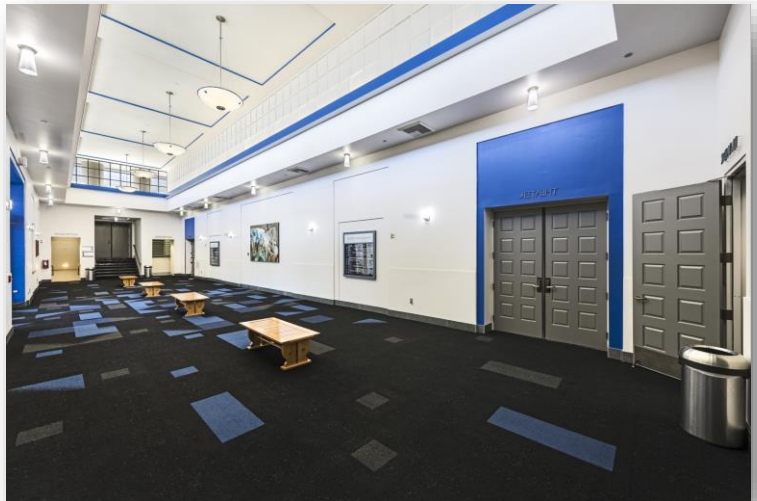
SEATING AREA

The Clark County Library Theater has stadium seating with a capacity of 399 and accessible seating is located at the top of the house. The stage is surrounded by seating on three sides. There are eight aisles with steps that lead from the back of the house to the stage level. The distance to the stage from the last row of seats is approximately 30'. There are no partial view seats in the house.



LOBBY

The performing arts center lobby is shared with the library, Large Conference Room, and the Paul C. Blau Theatre. It is suitable for light receptions and sign-in tables. The lobby must remain accessible to the public during regular operating hours (Monday-Thursday 10:00 a.m. to 8:00 p.m.; Friday-Sunday 10:00 a.m. to 6:00 p.m.). A concession booth and a ticket booth with windows that open to the lobby are included in the rental of the performing arts center. The lobby features three benches, natural light from skylights, and original artwork by Susanne Forestieri, winner of the prestigious 1996 National Endowment for the Arts Fellowship. Public restrooms are located adjacent to the lobby on the 1st and 2nd floor of the library.



MEETING ROOMS

The Large Conference Room and Paul C. Blau Theatre, a black box theater/dance Studio, are located adjacent to the Theater Lobby on the 1st floor. They can be rented separately or in conjunction with the performing arts center use/rental. Both are suitable for receptions. The Large Conference Room features two large wall-mounted TVs and a sound system. The Paul C. Blau Theatre has theatrical lighting, sound, and a projector.



KITCHENETTE

A kitchenette is located on the 1st floor next to the Large Conference Room and across from the Paul C. Blau Theatre. Use of the kitchenette is shared among users of the Main Theater, Large Conference Room, and the Paul C. Blau Theatre. It contains a refrigerator, microwave, oven with electric range, dishwasher, coffeemaker, and sink.



USHERS

Ushers must be provided by all rental organizations. The suggested minimum are two adult ushers for a performance with open seating and four to six adult ushers for performances with assigned seating. The Library District provides front-of-house staff for all library programming events. In addition to taking tickets and helping customers find their seats, ushers are also responsible for monitoring customers to ensure that no food or drink (other than bottled water) is taken into the Main Theater.

ADA COMPLIANCE

Access to the performing arts center is provided through the Performing Arts Center Lobby. Wheelchair accessibility is provided as listed on the seating diagram and ground plan. This venue was designed and operates in compliance with ADA specifications.

ASSISTIVE LISTENING

The performing arts center is equipped with an assistive listening system that is available for use upon request. There are a total of 12 headsets available to audience members who may have difficulty hearing performances. Headsets are located in the Sound Booth and are available for your front-of-house needs. Requests for a sign language interpreter must be directed to the performing arts center coordinator. The Library District suggests notice of five business days to accommodate such requests.

Load In Area

LOADING DOCK

The Loading Dock can accommodate one truck at a time and can only be used while actively loading and unloading vehicles. The loading dock has direct access to the shop area and stage.

Dock height – +2'-9 1/2" from ground

Roll up Loading door – 12'-0" W x 16'-7" H



Green Room

A Green Room is located in the performing arts center's basement across from the Chorus Dressing Rooms. It contains a refrigerator, microwave, vending machine, a couch and two love seats, two 6' tables and six chairs, and an upright piano.



Dressing Rooms



The Dressing Rooms are located in the performing arts center's basement. There are two, six-person Principal Dressing Rooms with full bathtub/shower and two, 13-person Chorus Dressing Rooms. Each chorus dressing room includes a restroom with four stalls and shower. The Chorus Dressing Rooms are adjacent and can be combined into one large room.

A washer and dryer are also available for use and are located adjacent to a Chorus Dressing Room. Please note that retail groups are required to provide their own laundry supplies.



Sound

SOUND SYSTEM & EQUIPMENT INVENTORY

QTY	MANUFACTURER	MODEL	DESCRIPTION
-----	--------------	-------	-------------

CONTROL

1	Yamaha	CL-3	Digital Console running Dante Network
1	Yamaha	Ri8-D	8 Channel In Interface
1	Yamaha	Ro8-D	8 Channel Out Interface (Mains)
2	Yamaha	1608-D	16 In 8 Out Interface
1	Driverack PA	PA	Main Speaker Management

PLAYBACK

1	Marantz	PMD510	Dual Cassette Deck
1	Denon	DN-C636	Compact Disk Player

INTERCOM COMMUNICATIONS

7	Clearcom	RS-702/RS-502	Belt Packs
7	Clearcom	various	Single Muff Headsets
2	Clearcom	various	Double Muff Headsets
2	Clearcom	KB-111A/RM-120A	Remote Station

MICROPHONES

User groups are required to provide their own batteries for microphones

4	Sennheiser	EM300-G	Wireless Microphone Receiver
4	Sennheiser	SKM300865-G	Handheld Wireless Microphone
4	Sennheiser	SK300-G	Body Pack/Lavalier
3	Audio Technica	ATM 710	Handheld Cardioid Condenser Mic
4	AKG	C418	Clip-On Mic
2	AKG	C430	Overhead Mic x2
1	AKG	D112	Low End Mic
8	Shure	SM57	Handheld Cardioid Dynamic Mic
8	Shure	SM58	Handheld Cardioid Dynamic Mic
4	Crown	CM30	Hanging Electric Condenser Mic
2	AKG	C1000	Medium Diaphragm Condenser Mic

MICROPHONE STANDS

7			Table Stand
10			Standard Stand
4			Tri Level Stand
1			Large Rolling Stand
10			Boom
2			Stereo Bar

INTERFACE ADAPTERS

1	Radial	Pro AV2	Stereo Direct Box
1	Audio Visual		Direct Box
1	Countryman	Type 85	Stereo Direct Box
2	Pro Co.		Direct Box
3	Audiotechnika	Vue V4	Systems Engine

MONITORS

2	Community	RS660	Trapezoidal Speaker Cabinet
2	Community	MVP38	Wedge Monitor
2	Yamaha	BR12M	12" 2-Way Wedge Monitor
4	JBL	EON 610	10" powered speaker

AMPLIFIERS

6	Crown	K2	L, R, & C Mains Amps; Monitor Amps
3	Crown	X5900	Sub Amps

SPEAKERS

2	EAW	AS490e	Mains Mid/High L & R
2	EAW	AS415e	Mains Mid L & R
3	VUE	H 12	Mains Center
2	VUE	A 10	Spot or Side Fill Monitors
2	VUE	I 8A	Spot Monitors for Discrete Monitoring
4	VUE	A 12	Full Range Floor Speakers
5	VUE	I 2x4.5	Front Fill Speakers
2			Mains Center Flown Cluster

SUBWOOFERS

2	Sound Bridge	3215SWR	Mains Sub L & R
2	VUE	Isoberic Cardioid	Mains Center

SOUND CONSOLE PRESET INFORMATION

INPUT/OUTPUT PATCH

INPUTS						
Input #	Purpose	Channel	Device	Source	Source #	Label
1	CD L	57	Omni IN	Unit	215	CD Output
2	CD R	58	Omni IN	Unit	216	CD Output
3	AV L	59	Omni IN	Unit	N/A	
4	AV R	60	Omni IN	Unit	N/A	
5	Purple Wireless	61	Omni IN	Unit	N/A	
6	Blue Wireless	62	Omni IN	Unit	N/A	
7	Orange Wireless	63	Omni IN	Unit	N/A	
8	Black Wireless	64	Omni IN	Unit	N/A	
1	Open	33	Dante	Patch Bay	145	Mic Level 1
2	Open	34	Dante	Patch Bay	146	Mic Level 2
3	Open	35	Dante	Patch Bay	147	Mic Level 3
4	Open	36	Dante	Patch Bay	148	Mic Level 4
5	Open	37	Dante	Patch Bay	149	Mic Level 5
6	Open	38	Dante	Patch Bay	150	Mic Level 6
7	Open	39	Dante	Patch Bay	151	Mic Level 7
8	Open	40	Dante	Patch Bay	152	Mic Level 8
9	Open	1	Dante	Rio1608D Stage	1	
10	Open	2	Dante	Rio1608D Stage	2	
11	Open	3	Dante	Rio1608D Stage	3	

INPUTS continued						
Input #	Purpose	Channel	Device	Source	Source #	Label
12	Open	4	Dante	Rio1608D Stage	4	
13	Open	5	Dante	Rio1608D Stage	5	
14	Open	6	Dante	Rio1608D Stage	6	
15	Open	7	Dante	Rio1608D Stage	7	
16	Open	8	Dante	Rio1608D Stage	8	
17	Open	9	Dante	Rio1608D Stage	9	
18	Open	10	Dante	Rio1608D Stage	10	
19	Open	11	Dante	Rio1608D Stage	11	
20	Open	12	Dante	Rio1608D Stage	12	
21	Open	13	Dante	Rio1608D Stage	13	
22	Open	14	Dante	Rio1608D Stage	14	
23	Open	15	Dante	Rio1608D Stage	15	
24	Open	16	Dante	Rio1608D Stage	16	
25	Open	17	Dante	Rio1608D Booth	1	
26	Open	18	Dante	Rio1608D Booth	2	
27	Open	19	Dante	Rio1608D Booth	3	
28	Open	20	Dante	Rio1608D Booth	4	
29	Open	21	Dante	Rio1608D Booth	5	
30	Open	22	Dante	Rio1608D Booth	6	
31	Open	23	Dante	Rio1608D Booth	7	
32	Open	24	Dante	Rio1608D Booth	8	
33	Open	25	Dante	Rio1608D Booth	9	
34	Open	26	Dante	Rio1608D Booth	10	
35	Open	27	Dante	Rio1608D Booth	11	
36	Open	28	Dante	Rio1608D Booth	12	

INPUTS continued						
Channel	Device	Source	Source #	Label		
37	Open	29	Dante	Rio1608D Booth	13	
38	Open	30	Dante	Rio1608D Booth	14	
39	Open	31	Dante	Rio1608D Booth	15	
40	Open	32	Dante	Rio1608D Booth	16	

OUPUTS					
Output #	Channel	Device	Destination	Destination #	Column1
1	Stereo L	Dante	Ro8	1	
2	Stereo R	Dante	Ro8	2	
3	Mix 1	Dante	Ro8	3	
4	Mix 2	Dante	Ro8	4	
5	Mix 3	Dante	Ro8	5	
6	Mix 4	Dante	Ro8	6	
7	Mix 5/Sub L	Dante	Ro8	7	
8	Mix 6/Sub R	Dante	Ro8	8	
26	Sub High	Dante	Vue Sub Amp		
27	Front Fill	Dante	Vue Vari Amp 1		
25	Center	Dante	Vue H12		
2	HOH	Omni Out	Patchbay	404	Matrix 1
3	Light Board	Omni Out	Patchbay	405	Matrix 2
4	Lobby Amp	Omni Out	Patchbay	297	Matrix 3
5	PB 289	Omni Out	Patchbay	289	Matrix 4
6	PB 290	Omni Out	Patchbay	290	Matrix 5
7	Booth Monitor L	Omni Out	Patchbay	406	Monitor L
8	Booth Monitor R	Omni Out	Patchbay	408	Monitor R
	Mix 1		Rio1608D Stage	1	
	Mix 2		Rio1608D Stage	2	
	Mix 3		Rio1608D Stage	3	
	Mix 4		Rio1608D Stage	4	
	Mix 9		Rio1608D Stage	5	
	Mix 10		Rio1608D Stage	6	
	Mix 11		Rio1608D Stage	7	
	Mix 12		Rio1608D Stage	8	
	PB 289		Rio1608D Booth	1	
	PB 290		Rio1608D Booth	2	
	Stereo L		Rio1608D Booth	3	
	Stereo R		Rio1608D Booth	4	
	Mix 9		Rio1608D Booth	5	
	Mix 10		Rio1608D Booth	6	
	Mix 11		Rio1608D Booth	7	
	Mix 12		Rio1608D Booth	8	

Projections

PROJECTION SYSTEM

The projection system features a 10,000 lumen DLP projector that can be used for movie screenings and presentations. The system is equipped with a Blu-ray/DVD player as well as a VCR. The projector is housed in a restricted area which can only be accessed by Library District staff.

Rental customers must provide their own HDMI cable to connect a user-furnished playback device to the projection system. Inputs are located in the control booth and can also be run from upstage right for remote HDMI and Balun ethernet inputs.

If a programming partner wishes to transfer PowerPoint files to the Library District computer, please load the files on to no less than 2 USB jump drives so there is a backup device.

PROJECTION EQUIPMENT INVENTORY

QTY	MANUFACTURER	MODEL	DESCRIPTION
1	Panasonic	PT-DX100	10,000 ANSI Lumen Projector
1	Sony	RDRVX530	VHS/DVD Recorder
1	Panasonic	WV-D5100HS	Show Camera
1	Sony	BDP-5550	Blu-Ray/DVD Player

Lighting

STAGE LIGHTING SYSTEM

The venue is equipped with a computer-controlled stage lighting system. Repertory lighting information is available upon request.

LIGHTING EQUIPMENT INVENTORY

QTY	MANUFACTURER	MODEL	DESCRIPTION
-----	--------------	-------	-------------

CONTROL

1	ETC	ION XE 20	2,048-Channel Digital Console with 2x20 Fader Wing
1	ETC	Paradigm	Houselight Control System

DIMMING

1	ETC	Sensor III	Lighting Control System
---	-----	------------	-------------------------

CONVENTIONAL LIGHTING FIXTURES

6	ETC	Source 4 14°	Standard ERS
3	ETC	Source 4 26°	Standard ERS
11	ETC	Source 4 19°	Standard ERS
16	ETC	Source 4 30-50° Zoom	Standard ERS
10	ETC	Parnel	PAR/Fresnel Hybrid with Zoom
4	ETC	PAR	Flood
4	Altman	PAR 64	Flood fixture
8	Altman	1KLG 30	Standard ERS
6	Altman	1KLG 20	Standard ERS
2	Altman	1KLG 20-40	Standard ERS

INTELLIGENT LIGHTING FIXTURES IN STANDARD RIG

3	ETC	Source 4 26°	With S4WRD LED retrofit
3	ETC	Source 4 19°	With S4WRD LED retrofit
3	ETC	Source 4 14°	With S4WRD LED retrofit
6	Altman	Spectra Cyc 200	RGBW-LED cyc light
19	Chauvet	Rogue R2X Wash	Moving Head Wash
4	Clay Paky	800	Moving Profile
8	Wybron	Forerunner 7140	Attached to S4 Pas and Par 64s, 16 gel string
2	Wybron	Powersupply 7150	Scroller power

ADDITIONAL EQUIPMENT AVAILABLE UPON REQUEST

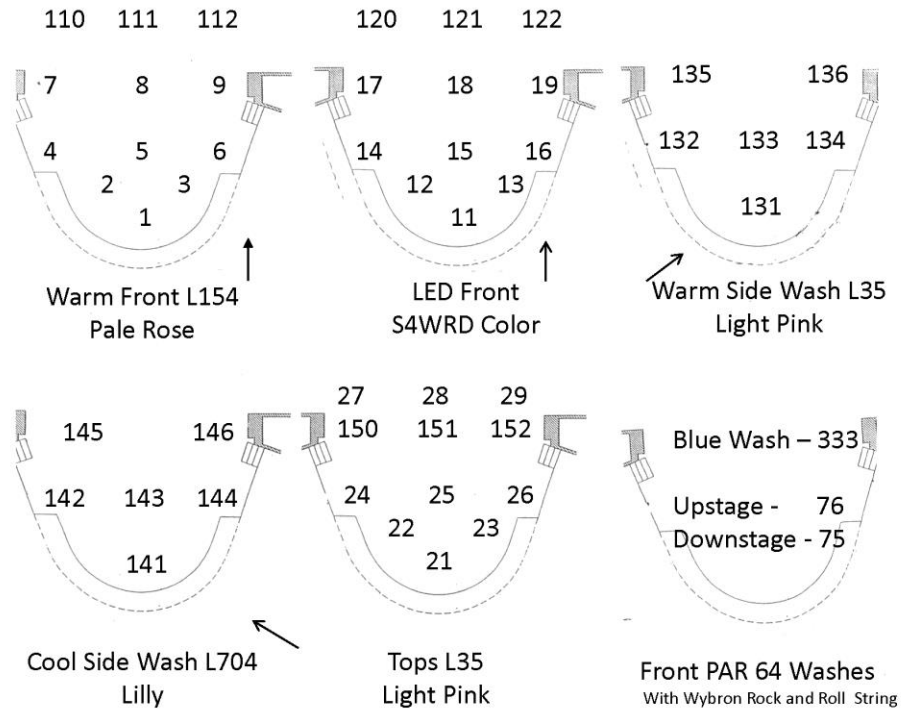
2	Strong	Trouperette III Followspot	
1	Le Maitre	Radiance Hazer	Fluid not included
2	ETC	Source 4 14°	Standard ERS
6	ETC	Source 4 19°	Standard ERS

1	ETC	Source 4 30-50° Zoom	Standard ERS
5	Altman	Spectra Cyc 200	RGBW-LED cyc light (groundrow)

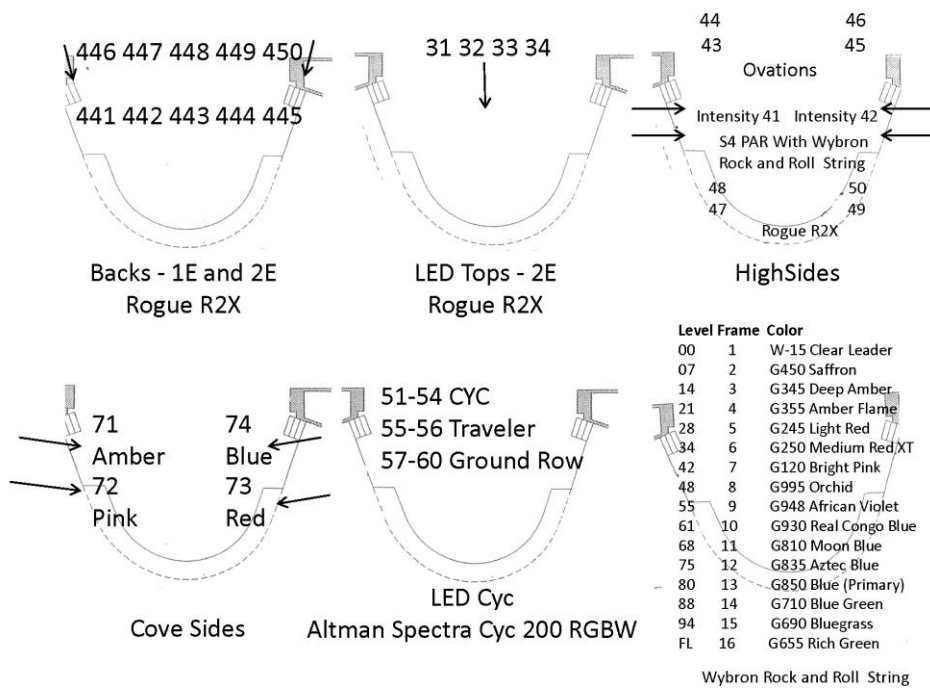
LIGHTING PLOT INFORMATION

MAGIC SHEET

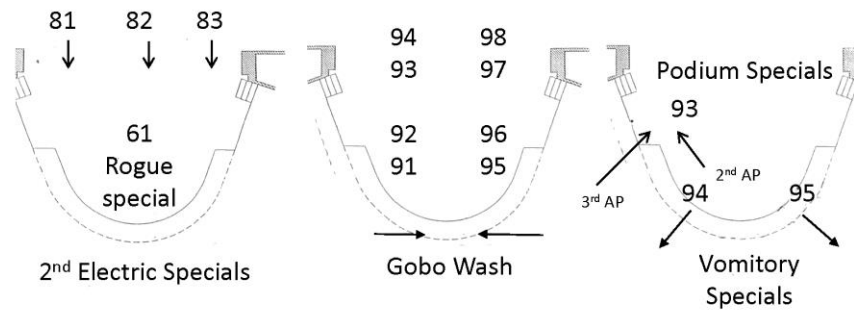
Clark County Library Theater- Magic Sheet Updated 6-16-2021



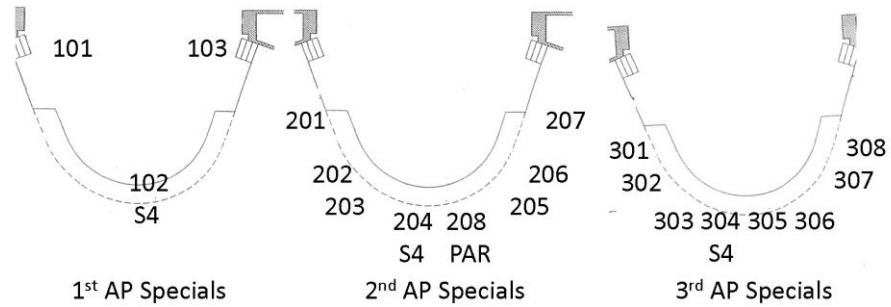
Clark County Library Theater- Magic Sheet Updated 6-16-2021



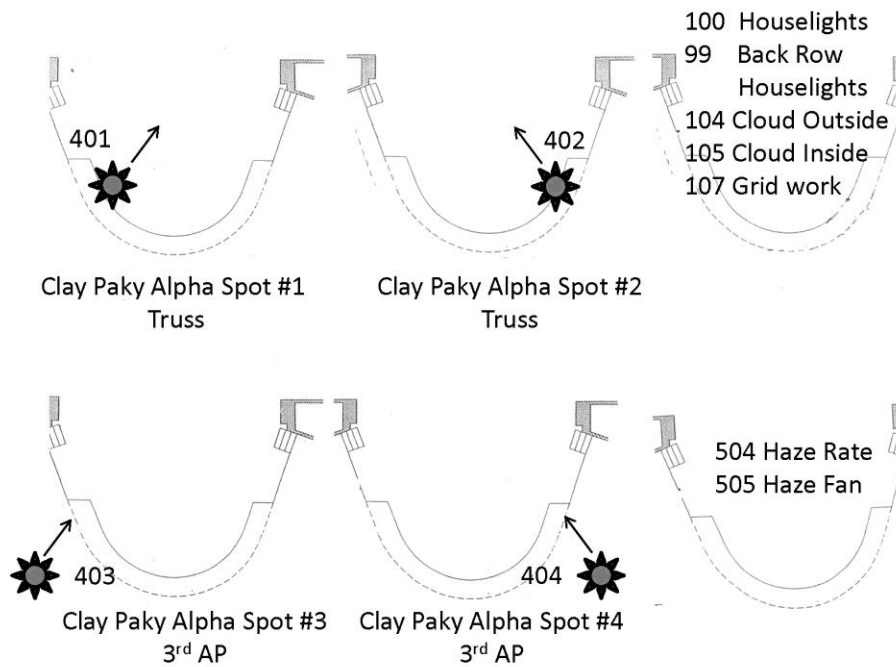
Clark County Library Theater- Magic Sheet Updated 6-15-2021



--- Specials ---



Clark County Library Theater- Magic Sheet Updated 6-16-2021



Rules & Policies

PERFORMING ARTS CENTER RENTAL POLICY

All Library District rental groups, programming partners, and customers must follow all local, state, and federal laws as well as all Las Vegas-Clark County Library District policies, procedures, and guidelines. A complete list of all policies can be found on the Library District Website (<https://lvccld.org/publications/>).

The most common documents associated with venue usage include:

[Library Rules of Conduct](#)

[Performing Arts Center Rental Policy](#)

[Facility Rental Fee Schedule](#)

Local Services

Emergency Medical

Emergency Medical Services

911

Concentra Urgent Care
3900 Paradise Rd Ste V, Las Vegas, NV 89169
702.369.0560

Concentra Urgent Care (24 hours)
5850 Polaris Ave Ste 100, Las Vegas, NV 89118
702.739.9957

Desert Springs Hospital Medical Center
2075 E Flamingo Rd, Las Vegas, NV 89119
702.733.8800

Pharmacies

Albertsons Pharmacy
1300 E Flamingo Rd, Las Vegas, NV 89109
702.733.2947

Target
4001 S Maryland Pkwy, Las Vegas, NV 89119
702.732.2218

Walgreens
1180 E Flamingo Rd Las Vegas, NV 89119
702.836.9119

Walgreens
2400 E. Tropicana Av. Las Vegas, NV 89121
702.435.6289

Hotels

Fairfield Inn Las Vegas Convention Center
3850 Paradise Rd, Las Vegas, NV 89169
702.791.0899

Residence Inn by Marriott Las Vegas Hughes Center
370 Hughes Center Dr, Las Vegas, NV 89169
702.650.0040

The Signature at MGM Grand
145 E Harmon Ave, Las Vegas, NV 89109
702.797.6000

Tuscany Suites & Casino
255 E Flamingo Rd, Las Vegas, NV 89169
702.893.8933

Rental Vehicle

McCarran Rental Car Center
7135 Gilespe St, Las Vegas, NV 89119

Restaurants

Blueberry Hill Family Restaurant
1505 E Flamingo Rd, Las Vegas, NV 89119
702.696.9666

Cugino's Italian Deli
4550 S. Maryland Pkwy, Ste 20 Las Vegas, NV 89119
702.895.7561

Crown and Anchor British Pub
1350 E Tropicana Ave, Las Vegas, NV 89119
702.739.8676

Einstein Bros Bagels
4626 S Maryland Pkwy, Las Vegas, NV 89119
702.795.7800

Metro Pizza
1395 E Tropicana Ave, Las Vegas, NV 89119
702.736.1955

Olive Garden Italian Restaurant
1545 E Flamingo Rd, Las Vegas, NV 89119
702.735.0082

Popeyes Louisiana Kitchen
1229 E Flamingo Rd, Las Vegas, NV 89119
702.369.0668

Raising Cane's Chicken Fingers
1120 E Flamingo Rd, Las Vegas, NV 89119
702.453.2263

Wingstop
3910 S. Maryland Pkwy Las Vegas, NV 89119
702.432.9464

Local Theatrical Supplier

4Wall Entertainment Stage Lighting Equipment
3165 W Sunset Rd #100, Las Vegas, NV 89118
702.263.3858

Production Resource Group LLC Stage Lighting Supplier
6050 S Valley View Blvd, Las Vegas, NV 89118
702.942.4774

AV Vegas
4780 Arville St, Las Vegas, NV 89103
702.878.5050

Map & Directions

Address: [1401 E. Flamingo Rd. Las Vegas, NV 89119](#)



From McCarran Airport

- Head south on McCarran Airport Connector/Paradise Rd toward Wayne Newton Blvd (3 ft)
- Keep left to stay on McCarran Airport Connector/Paradise Rd (0.2 mi)
- Turn left onto Kitty Hawk Way (0.2 mi)
- Slight left onto McCarran Airport Connector/Swenson St/Wayne Newton Blvd
- Continue to follow Swenson St (1.7 mi)
- Turn right onto E Flamingo Rd (0.7 mi)
- Destination will be on the right (243 ft)
- The destination is just past Escondido.

From I-15

- Head east on W Flamingo Rd toward Las Vegas Blvd South
- Driving 2.5 miles, destination will be on the right. The Library is on the corner of Flamingo and Escondido.

