

Prism

By Coachmen



PRISM



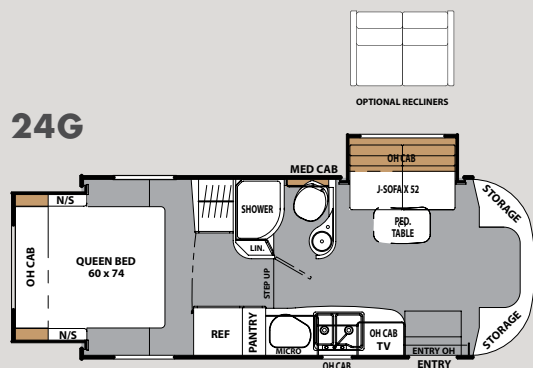
PRISM LE



Class C Motorhome

Prism
By Coachmen

PRISM Interior Features



- 1 Standard entertainment package** features 12 volt LCD TV on swing arm for optimal viewing and 12 volt DVD/CD stereo to enjoy movies and music whether traveling or RVing.
- 2 Modern kitchen** with solid surface countertops, metal faucet w/pullout sprayer, European-style cooktop w/glass cover and recessed composite sink.
- 3 AM/FM/CD radio with built-in backup camera** This great feature keeps you aware of your surroundings and makes parking a breeze.
- 4 Power Lumidome w/shade** to enjoy fresh air at the push of a button.
- 5 Convenient cooking options** to compliment the way you live with standard convection microwave.

- 6 Day/night roller shades** Easy to use, rattle-free, heavy duty roller shades provide light blocking and light filtering.
- 7 Island queen bed** at the push of a button — provides the comfort and convenience of a rear queen island in a motorhome under 25ft.
- 8 3-way refrigerator** for the most efficient use of power while you RV.
- 9 Smart design bathroom** features fully functioning shower and maximum storage without sacrificing valuable living space.
- 10 Standard dual recliner sofa** for relaxing at the end of a day's travel.
- 11 LED ceiling lighting** throughout for long life and efficient use of battery power.



PRISM Standard and Optional Features



INTERIOR APPOINTMENTS SLEEPING

Glazed Maple Residential Hardwood Cabinet Doors & Drawers
Oil Rubbed Bronze Hardware
Upgraded Congoleum Flooring Throughout
Vinyl Soft Touch Ceiling
Day/Night Window Roller Shades
Dual Reclining Sofa
Tinted Radius Slider Windows
Windshield Privacy Cover
Powered Roof Hatch Skylight w/Shade
LED Ceiling Lights Throughout
Sofa Throw Pillows

INTERIOR EQUIPMENT

Powered Jack Wing Antenna
Pre-wired for Satellite Dish through Coax Input
24" Coach LCD TV/DVD/2 Speaker/Sub
Bedroom LCD TV Prep Jack, Backer and Connections
Exterior Entertainment Center w/24" TV/Stereo/DVD/Speakers

GALLEY

1-piece Molded Solid Surface Countertops
Composite Double Bowl Sink w/Covers
Euro Style 2 Burner Cook Top w/Glass Cover
Euro Style 3 Way Refrigerator
Convection Oven
Upgrade Kitchen Faucet w/Sprayer
Upgraded Décor Backsplash
Low Profile Range Hood
Full Extension Roller Bearing
Drawer Guides Throughout
Mini Blind

BATH AND WATER

Foot Pedal Flush Toilet
Power Bath Vent
ABS Shower Surround
Upgrade Shower Head and Faucet
Shower Curtain
Skylight Over Shower
Single Lever Lav Faucet
Composite Lavatory Sink
Towel Ring/Robe Hooks/TP Holder
Medicine Cabinet
6 Gallon Gas El. Water Heater
Outside Shower
Black Tank Flush
Exterior Water Connections behind Hatch Door
Demand Water Pump
Easy Access Waste Tank
Termination Station

Queen Bed 60 x 74 (Fabric Covered)
Nightstands
Privacy Curtain w/Track

EXTERIOR/CONSTRUCTION/CHASSIS

Laminated Aluminum Framed Floor
2" Laminated Aluminum Framed Sidelwalls
Laminated Aluminum Framed Crowned w/TPO Roof Membrane
Hi-gloss Carmel Colored Fiberglass Exterior Sidelwalls
Azdel Superlite Composite Substrate in Sidelwall
Exterior Vinyl Graphics
Molded Fiberglass Front Cap w/Sunroof & Shade
Molded Fiberglass Rear Cap
Fiberglass Running Boards
Fiberglass Wheel Skirts
Lighted Exterior Grab Handle at Entrance Door
Curved Interior Grab Handle at Entrance Door
Steel Entry Step w/Built-in Easy Access Battery Compartment
Auto Power Single Entrance Step
Radius Entrance Door
LED Patio Light
Slam Latch Exterior Storage Compartment Doors
Power Patio Awning
Slide-out Room Awnings
Warehouse Roto Cast Storage Compartment w/Light
Stainless Steel Wheel Inserts
LED Tail Lights & Running Lights
Rear Manual Stabilizer Jacks
Outside 120V Receptacle
Exterior Camp Kitchen Table & Grill
Exterior Windshield Cover
2 Tone Driver & Passenger Swivel Seats
Radio w/Backup Monitor & Dash Speakers
Color Backup Camera
Sirius Satellite Radio
Wood Grain Dash Appliques
Cruise Control
Tilt Steering Wheel
Power Windows & Locks
Dash Air Conditioning
Exterior Mirrors w/Remote
3500 lb. Towing Hitch w/7-way Plug
Spare Tire

ELECTRICAL/HEATING/AC

30 Amp Power Cord
55 Amp Electronic Converter
Dual Batteries
Battery Disconnect
GFI Circuit
20,000 BTU El. Ducted Furnace
13,500 Low Profile "Evenflow" Ducted A/C
Wall Mounted Thermostat
Onan 3.6 KW LP Generator
"Coach Command" Systems Control Center
Heated Holding Tanks

SAFETY EQUIPMENT

Propane Leak Detector/Alarm
Smoke Detector/Alarm
Carbon Monoxide Detector/Alarm
Fire Extinguisher
Dead Bolt Lock Entrance Door
Multiple Seat Belts Throughout
Driver & Passenger Air Bags
Travel Easy, Roadside Assistance

OPTIONAL FEATURES

Onan 3.2 KW Diesel Generator
Dual Pane Tinted Windows
Full Paint – Blue Cobalt
Full Paint – Red Cobalt
15K BTU Low Profile "Even Cool" Ducted AC w/Heat Pump
Side View Cameras
Aluminum Rims
Bedroom 24" LCD TV
RV-ID (GPS Vehicle Tracking System)

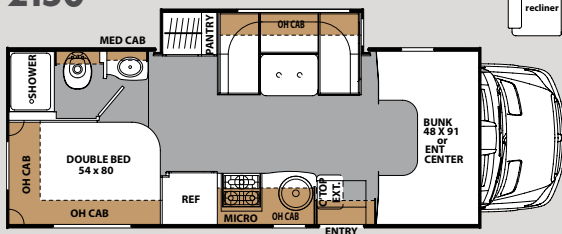
WARRANTY

Motorhome - 12 Mo./12,000 Mile Limited
Mercedes Sprinter Chassis - 36 Mo./36,000 Mile Bumper-to-Bumper
Mercedes Sprinter Powertrain - 60 Mo./100,000 Mile

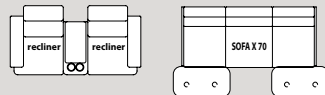
PRISM LE Interior Features



2150



Optional Seating



- 1 Oversize sink and high rise faucet** The contemporary look and durability of this sink with a high rise faucet makes cleaning cookware easy.
- 2 Coachmen's custom Thermofoil countertop and dinette table** This durable product will not come apart over time like T-mold or self edge countertops.
- 3 AM/FM/CD radio with built-in backup camera** This great feature keeps you aware of your surroundings and makes parking a breeze.
- 4 Full length 80" bed** provides more sleeping surface for a comfortable night's sleep.
- 5 Convenient cooking options** to compliment the way you live — your choice of a standard microwave or optional convection microwave.

- 6 Pleated night shades** block out the light to turn in for the night and help keep your coach cool inside on warmer days.
- 7 LCD TV & DVD** on swing arm for optimal viewing whether traveling or RVing.
- 8 Radius-cornered A/C ducts** ensure maximum, consistent air flow.
- 9 Designer carefree flooring** has a contemporary look with non-skid surface that resists cold-cracking.
- 10 Cabover bunk** for comfortable slumber and extra storage space when not in use.

PRISM LE Standard and Optional Features

INTERIOR APPOINTMENTS

Glazed Maple
Designer Carefree Flooring
Oil Rubbed Bronze Hardware
Vinyl Padded Up and Angle Pads
Thermofoil Countertops
Roller Bearing Drawer Guides Throughout
Nightshades Throughout
Clear Radius Slider Windows – Safety Glass
Reclining Pilot & Passenger Seats/Rotating
Large U-Dinette
Single Child Tether at Forward Facing Dinette
Raised Panel Upper/Flat Panel Lower Hardwood Doors
Interior Safety Grab Handle by Entrance Door

INTERIOR EQUIPMENT

TV Antenna and Rotor Package
LP Leak Alarm
Smoke Detector
Carbon Monoxide Detector
Fire Extinguisher
Bedroom TV Prep Jack & Backer for LCD TV
Radio & Backup Monitor w/Dash Speakers

GALLEY

Residential Size Microwave Oven
Double Door Refrigerator
Monitor Panel Command Center
Composite Round Recessed Kitchen Sink w/Lid
Power Lighted Range Hood
Attwood 3-Burner Cooktop w/Pots & Pans Drawer
Flip-up Countertop Extension

BATH AND WATER

Exterior Shower
Power Bath Vent
Demand Water Pump
Lavatory Sink
Medicine Cabinet
Skylight Over Shower
Oil Rubbed Bronze Shower Door
One-piece ABS Shower Surround
Oil Rubbed Bronze Robe & Towel Hooks
6 Gallon Gas El. Water Heater
Composite Foot Flush Toilet

SLEEPING

Full Bed 54 x 80
Privacy Drape – Lower Cab
Privacy Drape and Track Cover – Bedroom
Privacy Drape and Track Cover – Cabover
Cabover Bunk 48 x 90 (Fabric Covered)

ELECTRICAL/HEATING/AC

30 Amp Power Cord
55 Amp Electronic Converter
Auxiliary Battery
GFI Circuit
Battery Disconnect
Outside 120V Receptacle (DS)
Patio Light
Wall Mounted Thermostat
Outside Cable TV Hookup
20,000 BTU Ducted Furnace
13,500 BTU Ducted Roof A/C (2150)
Onan 3.6KW LP Generator

EXTERIOR/ CONSTRUCTION/CHASSIS

26.6 Gallon Fuel Tank
Driver & Passenger Air Bags
Deluxe Chassis Package
Cruise Control
Tilt Steering Wheel
Swivel Seats
Roto Cast Rear Warehouse Trunk Box
Dash Air Conditioning
3,500 lb. Towing Hitch w/7 Way Plug
Steel Laminated Floor & Laminated 2" Sidewalls
Crowned, Laminated TPO Roof
Power Double Entrance Step
Steel Entry Step Box w/Battery Compartment
Rubber Entry Step Treads
Rear Mount Stabilizer Jacks
Dead Bolt Lock Entrance Door
80" Radius Entrance Door
Power Patio Awning
Slideout Awnings
Power Windows & Locks
Spare Tire
Stainless Steel Wheel Inserts
High Gloss Sidewalls
Rear Steel Tube Bumper
Smooth Exterior Range Vent
Exterior TV Ready Area
Underhood DEF Tank
Azdel Superlite Composite Substrate in Sidewall

OPTIONAL FEATURES

24" LCD TV w/DVD – Coach
Front Bunk Ladder and Child Restraint System
Onan 3.2 KW Diesel Generator
& Auto Geny Transfer Switch
Dual Auxiliary Battery Upgrade
13.5" Bedroom TV w/Built-in DVD Player
Travel Easy Roadside Assistance
Campin' Cozy Package
Dual Pane Tinted Windows,
Tank Pads at Tank Gate Valve
Convection Microwave
Tank Heat Pads
Cabover Power Vent Fan
Front Entertainment Center
(32" TV w/Stereo and 2 Speakers)
Rear Ladder
Sofa and Table
Partial Paint
Exterior 24" TV w/DVD Player and 2 Speakers
Dual Recliners
RV-ID (GPS Vehicle Tracking System)
Upgrade Mattress

Interior Décor and Exterior Paint



Red Cobalt



Blue Cobalt



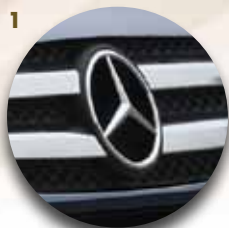
All-purpose function and luxury in a Class C? Prism fits the bill.

Whether exploring the countryside on a weekend getaway or transporting the soccer team, Prism gets you there in style. It's the perfect marriage between experience, dependability and value from the Industry's premier Class C maker with the economy and prestige of the Mercedes diesel chassis. The Prism is a luxurious, easy to drive, multi-use touring vehicle that provides unique styling and amenities. From the interior's solid surface counter tops, soft touch ceiling, residential flooring and versatile interior storage to the exterior's industry leading warehouse storage space, LED running lights, tinted windows and aerodynamic, stylish full fiberglass cap, Prism is ideal for short or long trips.



PRISM Exterior Features

- 1 The Mercedes Sprinter chassis is easy on fuel and on the eyes. It also delivers the great ride and driveability Mercedes is famous for.
- 2 A molded aerodynamically styled front cap reduces wind resistance and adds a polished automotive look.
- 3 Tinted windows block out the sun and the heat while adding a sleek exterior look.
- 4 The One Touch power awning is easy to open and close and comes with adjustable arms for more shade or rain water run off.
- 5 Beneath the stars or the full length awning, enjoy your favorite movies or music and fresh air at the same time with the outside entertainment system.
- 6 The warehouse exterior storage provides you with a ton of exterior space that is great for both long and short term stays.
- 7 LED Tail and marker lights for long-lasting safety.
- 8 Prepare meals and enjoy the family at the same time using the outdoor kitchen.
- 9 Azdel™ SuperLite substrate sidewalls are lightweight, durable and resistant to moisture. Virtually eliminates de-lamination.



Features A through E shown below available on Prism 24G only:

- A** Radio and backup monitor with dash speakers. **B** LED interior lights with oil rubbed bronze ring. **C** Fiberglass front cap has overhead window with shade. **D** Skylight with power roof hatch. **E** MCD day/night shade provides privacy, blocks out light at night and helps keep your coach cool inside on warmer days.



PRISM LE Exterior Features

- 1** The Mercedes Sprinter chassis is easy on fuel and on the eyes. It also delivers the great ride and driveability Mercedes is famous for.
- 2** A power entry step automatically deploys and retracts when opening or closing the door allowing for easy entry and exit.
- 3** The One Touch power awning is easy to open and close and comes with adjustable arms for more shade or rain water run off.
- 4** Slide room awnings protect your slides from the elements and keep them free of debris. (off door side)
- 5** LP generator provides full power for tailgating or while dry camping. (Onan® diesel option also available).
- 6** Watch your favorite movies while still enjoying the fresh air with the outside entertainment system. (Optional)
- 7** The warehouse exterior storage provides you with a ton of exterior space that is great for both long and short term stays.
- 8** Azdel™ Superlite substrate sidewalls are lightweight, durable and resistant to moisture. Virtually eliminates de-lamination.



Shown with optional painted skirt.





SPECIFICATIONS

	PRISM 24G	PRISM LE 2150
Chassis	3500 Sprinter	3500 Sprinter
Engine	V6 3.0L	V6 3.0L
Horse Power	188	188
Torque	325	325
Wheel Base	170"	170"
GVWR (lbs.)	11,030	11,030
GCWR (lbs.)	15,250	15,250
UVW (approx. lbs.)	9,305	9,645
CCC (approx. lbs.)	1,725	1,385
GAWR Front (lbs.)	4,410	4,410
GAWR Rear (lbs.)	7,720	7,720
Interior Height	6' 7"	6' 10"
Exterior Width	7' 7"	8' 0"
Exterior Height (with A/C)	10' 4"	11' 1"
Exterior Length (with Hitch)	24' 10"	25' 0"
Hitch Weight (lbs.)	3,500	3,500
Fuel Capacity (gal.)	26	26
LP Capacity (lbs.)	85	85
Fresh Water Capacity (gal.)	30	50
Water Heater Capacity (gal.)	6	6
Grey Tank Capacity (gal.)	29	28
Blank Tank Capacity (gal.)	28	28
Exterior Storage (cu. ft.)	41	88
Awning Length	15'	16'



**423 N. Main Street • P.O. Box 30
Middlebury, IN 46540**

To learn more about Coachmen RV and our products
and see how Coachmen is making the easy life easier,
visit www.coachmenrv.com



Travel Easy™ Roadside Assistance

RVing is easier with Coachmen's Travel Easy™ Roadside Assistance provided FREE the first year of ownership to those who purchase a New Coachmen RV. Administered by Coach-Net, this service provides you with 24/7 operational, technical and emergency road service coverage. Also included is towing, fuel delivery, jump starts, lockout service, tire changes, mobile mechanic and unlimited technical assistance. Anywhere. Anytime. Travel Easy™ is the security of knowing that help is an easy phone call away.



Free One Year Membership – Coachmen Owners' Association

Coachmen is proud to sponsor the largest manufacturer sponsored camping club in North America ... Coachmen Owners' Association (COA). COA provides you a world of ways to enjoy your RV. This is FUN ON OVERDRIVE and provides: Free Trip Routing, Exciting Tours & Rallies, Free Campground Directory, Local/State Club Activities, Easy RVing Magazine Free, Theme Park Discounts, Fuel Discounts, Free onebigplanet® Memberships with discounts at 180,000 merchants and Much More!

Every new Coachmen RV buyer is eligible for a 1 Year FREE membership in the Coachmen Owners' Association. It all adds up to an easy ownership experience!



Forest River, Inc. encourages our customers to purchase their Forest River products from a local dealership whenever possible for the following reasons:

- 1) Forest River, Inc. dealers are independently owned and operated businesses so priority service and scheduling is at their discretion and is often provided to customers that purchased their unit at that dealership.
- 2) Purchasing locally allows customers to establish meaningful relationships with a dealer, enhancing the RV experience through assistance with product questions, user tips or RV regulations for your state or country, and much more!
- 3) Canadian customers must meet requirements to bring an RV purchased out of the country to their home. These requirements may involve additional inspections and certifications, taxes and fees. Your local Canadian Dealer is a professional at meeting these requirements.
- 4) Scheduling timely warranty repairs and adjustments through a local dealership provides far greater flexibility and convenience to you, the customer!

It is the goal of Forest River, Inc. that all of our RV owners fully enjoy the RV experience and that customer satisfaction meets or exceeds their expectations!

GVWR (Gross Vehicle Weight Rating): The maximum permissible weight of the unit, including the unloaded vehicle weight (UVW) plus all fluids, cargo, optional equipment and accessories. For safety and product performance, do not exceed the GVWR.

GCWR (Gross Combined Weight Rating): The maximum total weight of the loaded unit, plus a tow vehicle. This includes the weight of both the unit and tow vehicle, fuel for each, all other fluids, cargo, occupants, optional equipment and accessories.

Important Note: All capacities are approximate, and all dimensions are nominal. Coachmen motorhomes are designed to allow for a wide variety of uses, extended trips with two people or short trips with multiple people. Accordingly, each unit allows ample room for sleeping, seating, fluids and cargo. While the customer is the beneficiary of this design, the customer also bears the responsibility to select the proper combination of passengers, cargo, load, and tow vehicle without exceeding the chassis weight capabilities. Consumer may need additional braking capacity to tow loads greater than 1,000 pounds.

Seat belts should always be worn for passenger safety. Seat belts are provided at most locations to allow convenience in selecting which seat to occupy. However, it is not intended that all seating positions equipped with a seat belt may be occupied while the vehicle is in motion, without regard to other weight factors.

All Coachmen motorhomes are designed to ensure that the number of passengers allowed while the vehicle is in motion will always at least equal the stated sleeping capacity. Though extra seat belts may be provided, for your safety and the proper operation of your vehicle, limit your passengers to the number allowed by the Net Carrying Capacity of your vehicle.



Learn More
Scan this barcode using
a QR Reader on your
smart phone to learn
more about Forest River.



A Berkshire Hathaway company.

All information contained in this brochure is believed to be accurate at the time of publication. However, during the model year, it may be necessary to make revisions and Coachmen reserves the right to make all such changes without notice, including prices, colors, materials, equipment and specifications as well as the addition of new models and the discontinuance of models shown in this brochure. Therefore, please consult with your Coachmen dealer and confirm the existence of any materials, design or specifications that are material to your purchase decision. 2/13

©Copyright 2013 Coachmen RV a Division of Forest River Inc – All Rights Reserved.

Your Prism Dealer

