

Class of 2019

**RESIDENCY APPLICATION
STEP BY STEP**

Unique Characteristics

- **Submit your Unique Characteristics Paragraphs.**
 - 2 paragraphs**
 - 125 words each**
- **Deadline was June 1st!**

Personal Statements

- **Personal statements should be one page, single-spaced in length.**
- **Separate personal statements for different specialties**
- **Two Variations on the same personal statement for prelim/transitional and advanced programs**
- **Can do individualized personal statements for each program although you risk assigning an individualized personal statement to the wrong program**

Personal Statements

- **Focus on why the specialty is a perfect fit for you**
- **“Lovin’ the vanilla,” but other flavors are okay too.**
- **It’s okay to make it a bit personal.**
- **When in doubt, play it safe!**



Letters of Recommendation

- **You can submit up to 4 letters through ERAS**
- **The MSPE (Dean's Letter) does not count as one of the four letters.**
- **The Departmental or Chairman's Letter DOES count as one of the four.**
- **You do not have to send the same four letters to each program.**

Letters of Recommendation

Departmental Letters Required for:

Anesthesiology

Emergency Medicine

Otolaryngology

Internal Medicine

Plastic Surgery

Obstetrics and Gynecology

Urology

Pediatrics

General Surgery

Orthopaedics

Neurosurgery

Letters of Recommendation

No Departmental Letters for:

Dermatology

Family Medicine

Neurology

Ophthalmology

Radiation Oncology

Pathology

Psychiatry

Radiology

PM&R

Letters of Recommendation

- **Ask faculty for letters of recommendation**
- **Letters must be on letterhead and signed**
- **Must be uploaded to ERAS by letter writer**
- **Target deadline for letters to be submitted is September 1st**

Letters of Recommendation

ERAS LOR Process:

- 1. Finalize letter writer's name in ERAS**
- 2. Give the letter/link generated by ERAS to your letter writer**
- 3. Letter writer will upload letter to ERAS through AAMC**
- 4. Once uploaded you may assign letter to programs.**

Letters of Recommendation

You may finalize and request as many letters as you wish.

You may only assign up to four letters per program. These may be the same letters or different letters.

Example: If you are applying in two different specialties you may choose to use two different sets of letters from different authors.

Letters of Recommendation

Tracking your letters:

In your ERAS application find the “Letters of Recommendation” tab.

“Confirmed for Upload” - you have successfully finalized the author

“Uploaded” - author has uploaded the letter and you can assign to programs

Letters of Recommendation

Helpful ERAS links:

[User Guide for applicants](#)

[Instructions for letter writers](#)

Specialty recommendation forms

- **Plastic Surgery Residency Recommendation Form**
- **Otorhinolaryngology Residency Recommendation Form**
- **Emergency Medicine Standard Letter of Evaluation (SLOE)**
- **Orthopaedic Surgery**

The ERAS Application

The components of the application are:

- **MyERAS (Application, Personal Statement and Photo)**
- **3-4 Letters of Recommendation**
- **USMLE Transcript**
- **MSPE**
- **Medical School Transcript**

Applying Through ERAS

- **Complete MyERAS application.**
- **Follow up on letters that have not been submitted.**
- **Assign Letters of Recommendation**
- **Review your transcript**
- **Review your MSPE. Make sure that all of the courses are included and grades are correct. You may not change the content of the letter.**

Timing of Step 2 and Score Release

- Take Step 2CS by Nov 3, 2018.
- Take Step 2CK by Nov 30, 2018.
- You must authorize and assign your USMLE transcript to programs in ERAS to share your Step 1 score.
- When first applying to a program and assigning your USMLE transcript, all reported scores will be transmitted (including Step 2 if score has been reported)
 - You will be able to view the Transmission Status to each program, which includes Date and Scores Included.

Timing of Step 2 and Score Release

- To avoid sending an unknown Step 2 score to programs, schedule your exam date for September 15th or later. You will then have the choice to resend when the new score becomes available.
- If/when a new score becomes available during application season and you would like to send to a program to include with your application, you will Resend My Scores in ERAS.

AMA Freida and ERAS

- **Gather information about residency programs.**
- **Access the AMA Freida Program at**
<http://www.ama-assn.org/ama/pub/education-careers/graduate-medical-education/freida-online.page>
- **Work on your ERAS application.**
- **Check for individual program application deadlines and requirements.**

Submitting Your Application

- **Submit application beginning September 15th.**
- **Applications should be complete by October 1st including all letters of recommendation.**
- **MSPE's are released October 1st.**

The National Residency Matching Program

- **Register for the NRMP on their website at www.nrmp.org beginning on September 15, 2018.**
- **Deadline for registration is November 30, 2018.**
- **You must register to participate in the Match!**

Residency Interviews

- **Will begin in October and November**
- **Busiest months are December and January**
- **Interview Workshop will be held in late September**
- **Interview Skills Workshops in September and October**



Residency Interviews

- **Residency Interview Panel Discussion**
- **In late September**
- **Program Directors answer all questions related to the interview process**
- **NOT recorded**



Entering your Rank Order List

- **Rank Order List entry begins on January 15, 2019**
- **Deadline to enter lists is 9pm on February 20, 2019**
- **First choice correspondence/phone calls should be made by early February**
- **Only rank programs you are willing to train at**

Match Day

Friday, March 15, 2019

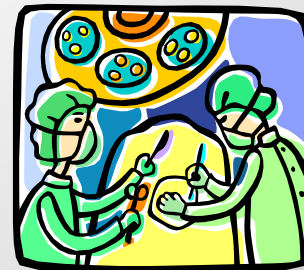


Early Matches

Ophthalmology



Urology



Early Matches

- **Early Matches are Ophthalmology and Urology**
- **Application submission target dates are at the beginning of September.**
- **Interviews take place in late October, November and early to mid December.**
- **Request an early transcript from the Office of the Registrar.**

Careers in Medicine

Website

<http://www.aamc.org/students/cim/>

Getting into a Residency

Log in with AAMC ID

Questions and Help

Office of Student Affairs
215-898-7190

Dr. Jon Morris morrisjo@uphs.upenn.edu

Dr. Neha Vapiwala neha.vapiwala@uphs.upenn.edu

Carrie Renner rennerc@upenn.edu

Jessica Maguire jesmag@penncmedicine.upenn.edu