

PARTNERS IN PROGRESS

together on the path to value-based care



orangeMZI
2014 user conference

Client Registration Brochure

September 15-17
Newport Beach, CA

Ucon

2014



This year's User Conference is your

PATH

TO CONNECT

*network with fellow users,
technology partners & OrangeMZI Staff*

BE INSPIRED

*get exposed to new ways of thinking
& drive up your productivity*

GAIN INSIGHT

*to industry trends, expertise, strategies &
powerful technological developments*

LEARN

*from an education focused agenda
including highlights by actual user experiences*

JOIN US



in Newport Beach , CA | Sept.15-17

The 2014 OrangeMZI User Conference will provide three days of learning and interaction with peers, product experts, industry speakers and executives. This year will be the first time we are hosting this event as the combined company of Orange Health Solutions and MZI HealthCare and we are very excited to share our vision with you. Hear about best practices, real life implementations and information about our industry's shift from volume to value based-care.

WHO WILL ATTEND



C-Suite



Dept Managers



IT Managers



Clinical Staff



Users

TOP 3 REASONS TO ATTEND

1. CONNECT!

Network, exchange ideas & experiences with peers and industry leaders.

2. LEARN!

With over 40 unique sessions designed to enhance your knowledge of industry trends and our products and services, you'll come away with a wealth of information!

3. TURBO CHARGE YOUR TEAM!

Put your newly acquired knowledge to work as soon as you get back to your office. Be a rockstar as you inspire your co-workers by sharing best practices and new ideas.



SCHEDULE-AT-A-GLANCE

Sunday, September 14

5:30PM - 8:30PM Early Registration

Monday, September 15

8:00AM - 5:00PM Registration
8:00AM - 9:00AM Continental Breakfast-The OrangeMZI Marketplace
9:00AM - 10:00AM Opening Session
10:00AM - 10:15AM Coffee Break-The OrangeMZI Marketplace
10:15AM - 11:15AM Session 1
11:25AM - 12:25PM Session 2
12:25PM - 2:00PM Hosted Lunch
2:00PM - 3:00PM Session 3
3:10PM - 4:10PM Session 4
4:10PM - 4:25PM Coffee Break-The OrangeMZI Marketplace
4:25PM - 5:25PM Session 5
5:30PM - 6:45PM OrangeMZI Marketplace Cocktail Hour

Tuesday, September 16

8:00AM - 9:00AM Continental Breakfast-The OrangeMZI Marketplace
9:00AM - 10:00AM HCIM ICD-10 Presentation
10:00AM - 11:00AM Keynote Address
11:00AM - 11:15AM Coffee Break-The OrangeMZI Marketplace
11:15AM - 12:15PM Session 6
12:15PM - 1:30PM Hosted Lunch
1:30PM - 2:00PM Afternoon Respite: Dessert & Raffle Drawings-
The OrangeMZI Marketplace
2:00PM - 3:00PM Session 7
3:10PM - 4:10PM Session 8
4:20PM - 5:20PM Session 9
7:00PM - 9:30PM Join the OrangeMZI Crew at the Jersey Party!

Wednesday, September 17

8:00AM - 9:00AM Continental Breakfast at the Conference Area Foyer
9:00AM - 10:00AM Session 10
10:10AM - 11:10AM Session 11
11:20AM - 12:20PM Session 12
12:20PM - 12:35PM Hosted Box Lunch Grab-n-Go
12:35PM - 1:35PM Raffle Prize Drawing & Closing Session



GAIN INSIGHT

This year's agenda features four "Paths" to allow you to focus on sessions of specific areas of interest. The schedule contains five concurrent sessions with over 40 unique sessions in all. This means three conference days packed with valuable information, so plan to stay for the entire conference and take full advantage of all that is offered.

PATHS

Executive

C-Suite Dept Managers

This path is geared for the C-level executives, managers and users and includes an amazing line-up of speakers, panel of experts and networking sessions with industry leaders.

Managing Medical Costs & Quality

Clinical Staff Dept Managers Users

This path is geared for clinical staff, managers and users who want to learn strategies to better track and monitor quality outcomes through analytics, effective reporting and efficient use of our services and care programs.

Maximizing Output

Dept Managers IT Managers Clinical Staff Users

This path is geared for all users who want to learn about all the bells & whistles our product suite offers. Maximize output through automation, tips & tricks and learn from fellow client user experiences.

Environment Optimization

IT Managers Dept Managers Users

This path is geared for IT managers, DBAs, Report Writers and users who want to learn how to set-up & configure our v6 product suite environment for optimal peak performance.



Western Regional User Group Meeting

There will be a Western Regional User Group Meeting held on Monday, September 15, during Session 3 from 2-3pm. Sign up and meet the new WRUG Board! Join the group and get the latest information, news and be part of this amazing user community!

A message from WRUG:

You're invited to join the new EZ-CAP® User Group Forum on LinkedIn

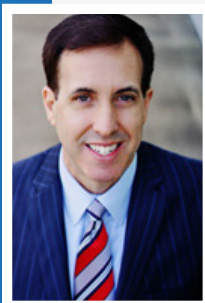
We're excited to announce the launch of an EZ-CAP User Group Forum on LinkedIn! This group is only open to current EZ-CAP users and is intended to facilitate open communication and collaboration. Since there will be no WRUG Conference this year in lieu of the UCON, this is how we'll stay connected. Please join today - we look forward to hearing from you!

For more information contact the WRUG board at info@ezwrug.org.

Your 2014 Board Members:

Sandra Carabarin-Monroy – Co-Chair
Cindy Ruth - Treasurer
Tawnya Smead – MZI Liaison
Sara Aukerman – User Liaison
Tamra Ruymann – Vendor Liaison

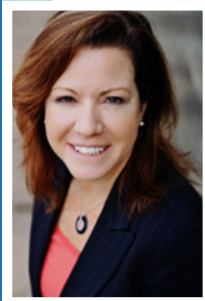
BE INSPIRED



**Monday, Sept. 15, Opening Session, 9:00-10:00am and
Wednesday, Sept. 17, Closing Session 12:35-1:35pm**

Howard Buff | CEO and Co-Founder of Orange Health Solutions

Howard Buff is passionately leveraging his unique entrepreneurial skills and disciplined Fortune 500 company successes. For 20 years, his Executive leadership focus has been in all aspects of healthcare and financial services within United Health Group, Paychex and Insperty. Howard led and drove numerous enterprise-wide organizational efforts that resulted in double/triple digit growth, industry leading customer/consumer satisfaction outcomes, high levels of employee engagement, while expanding profit margins and improving shareholder value.



Wednesday, Sept. 17, Closing Session 12:35-1:35pm

Nicole Bradberry | President and Co-Founder of Orange Health Solutions

Nicole brings an innovative vision, deep knowledge of healthcare, technology and business solutions together to uniquely build Orange Health Solutions. Prior to Orange, she was a founding Executive and Chief Information Officer for Rise Health, where she led the design and implementation of a full primary care transformation suite of products which included proprietary technology and transformational business solutions. In this role, she led her team to win the prestigious U.S. Department of Health and Human Services health data award for IT innovation.



Tuesday, Sept. 16 - General Session, 10:00-11:00am

Mack Dryden | Keynote

“Awesome!” “Hilarious!” “The best we’ve ever had!” The accolades for this world-class performer go on and on. But whether he’s busting ribs with his uproarious, family-friendly standup, or inspiring with a powerful yet laugh-out-loud motivational speech, Mack is a one-of-a-kind performer who always kills the crowd and thrills his clients. From humble beginnings as a blue-collar paper mill employee in Mississippi, Mack’s path to becoming one of the top corporate comedians and humorous motivational speakers in the country was a circuitous one to say the least. He was an award-winning newspaper reporter, taught karate after earning a black belt, and finally made a career of his true love, making people laugh and having a positive impact on their lives.

As a performer, he’s appeared on numerous TV shows, including The Tonight Show with both Johnny Carson and Jay Leno, as well as acting roles on many dramas like ABC’s The Guardian and JAG. As a writer, he’s won a prestigious fiction-writing contest, and was handpicked by Bill Maher for the writing staff of ABC’S Politically Incorrect. He’s a two-time cancer survivor who speaks at dozens of survival celebrations every year, and has also survived a harrowing stay in an African prison, not to mention “the sharks in showbiz who stab you in the front!” Instead of brooding about his misfortunes, he does the opposite and shares his goal-achieving secrets with hilarious, moving stories about the challenges he’s overcome to reach his goals.



Tuesday, Sept. 16 - Session 9, 4:20-5:20pm

Scott Brown | Co-Founder & President of ADVault, Inc., the creator of MyDirectives.com®

MyDirectives.com® is the world’s first digital, HIPAA-compliant, emergency medical/advance care plan solution, delivered as a “meaningful-use” plug-in to EHRs or a stand-alone website. MyDirectives educates and helps consumers to complete an advance care plan that includes high-quality directives, then makes the plan accessible to doctors and hospitals 24 hours a day, 7 days a week, anywhere in the world.

Prior to joining MyDirectives, Scott Brown was a partner with the Texas law firm Jackson L.L.P., in Dallas, Texas where he practiced international transaction law and represented both large and small companies across a broad range of industries in connection with corporate securities and commercial matters.

Featured Speakers and Industry Leaders



Monday, Sept.15 - Session 1, 10:00-11:00am & Session 4, 3:10-4:10pm

Bill Barcellona | S.R. Vice President for Government Affairs at California Association of Physicians Groups

Bill Barcellona serves as the Senior Vice President for Government Affairs for CAPG, a national trade association of over 160 medical groups and independent practice associations that serve 18 million Californians and additional physician organizations in a growing list of states. Collectively these physician groups are known as the “California delegated model” because they are structured as risk bearing organizations (“RBOs”) that are paid on a capitated basis and delegated certain administrative responsibilities in the managed care system.

Bill oversees state and federal legislative and regulatory policy and advocacy in Sacramento and Washington, D.C. Bill is a former Deputy Director for Plan-Provider Relations at the Department of Managed Health Care in Sacramento. He oversaw health plan operational issues and handled policy matters for the DMHC. Bill has a Masters in Healthcare Administration from the University of Southern California and serves as an adjunct faculty member at USC and also holds a B.A. in political science and a J.D. He has practiced law for 29 years in California and prior to his service at the DMHC he spent 16 years at two major law firms in Newport Beach and Sacramento, primarily as a civil litigator. He was first rated “AV” by Martindale Hubbell in 2000 while a partner at Greve, Clifford, Wengel and Paras, LLP. The AV rating is the highest ranking for an attorney for legal expertise and ethical practice. Bill’s current legal experience includes general health law matters with an emphasis in Knox Keene Act and managed care issues. He enjoys teaching and lecturing across the country on health care management, operations and policy matters.



Tuesday, Sept.16 - General Session, 9:00-10:00am

Michael Wilson | Co-Founder President & CEO, HealthCare Information Management, Inc. (HCIM)

With over 30 years of experience in the health care industry, Michael Wilson is a seasoned and respected business professional. His experience has been enhanced through the leadership positions he has held with leading health care companies such as Blue Cross of California, Blue Shield of California, NASCO, McKesson/HBOC, and John Muir/Mt. Diablo Health System. The expertise Wilson has acquired in the managed care arena has equipped him with the ability to deliver innovative and effective solutions in an ever-evolving health care climate. Wilson’s success in implementing strategies and projects is driven by his knowledge of the health care issues impacting health care delivery in today’s marketplace. He has developed strategies for claims payment and adjudication that align with Medicare regulatory standards and requirements. As a past member of the Health Insurance Portability and Accountability Act (HIPAA) Advisory Committee for The IPA Association of America, he has acquired expertise in interpreting and implementing compliance guidelines required by HIPAA. Wilson’s demonstrated skill in such critical components of managed care as client reporting, devising and managing operational policies and procedures, system hierarchical development, and capitation processing has formed the foundation of his winning approaches to some of the most complex health care issues.

With over 30 years of experience in the health care industry, Michael Wilson is a seasoned and respected business professional. His experience has been enhanced through the leadership positions he has held with leading health care companies such as Blue Cross of California, Blue Shield of California, NASCO, McKesson/HBOC, and John Muir/Mt. Diablo Health System. The expertise Wilson has acquired in the managed care arena has equipped him with the ability to deliver innovative and effective solutions in an ever-evolving health care climate. Wilson’s success in implementing strategies and projects is driven by his knowledge of the health care issues impacting health care delivery in today’s marketplace. He has developed strategies for claims payment and adjudication that align with Medicare regulatory standards and requirements. As a past member of the Health Insurance Portability and Accountability Act (HIPAA) Advisory Committee for The IPA Association of America, he has acquired expertise in interpreting and implementing compliance guidelines required by HIPAA. Wilson’s demonstrated skill in such critical components of managed care as client reporting, devising and managing operational policies and procedures, system hierarchical development, and capitation processing has formed the foundation of his winning approaches to some of the most complex health care issues.



Tuesday, Sept.15 - General Session, 9:00-10:00am

Peggy Honts | V.P. of Consulting Services and the Regulatory Practice Leader at AXIOM Systems

With 20 plus years of technical and management experience, Peggy Honts is one of the health-care industry’s leading ICD-10 subject matter experts. Currently V.P. of Consulting Services and the Regulatory Practice Leader at AXIOM Systems, Peggy previously served as V.P. of Application Development at a leading Behavioral Health Plan and enjoyed a long, successful career at IBM. Peggy is the co-chair of WEDI’s ICD-10 Impact Assessment and ICD-10 Education Sub Work Groups, and regularly presents on regulatory topics such as HIPAA, ICD-10, and ACA Operating

Rules at national group conferences. She has received the 2010 and 2011 WEDI Award of Merit, 2012 WEDI Distinguished Service Award and has also attained the Professional in the Academy of Healthcare Management (PAHM) designation.

General Session

Dept Managers

IT Managers

Clinical Staff

Users

HCIM ICD-10, Presented by Platinum Sponsor Michael Wilson & Co-Presented by Peggy Honts

With a little room to breathe until the October 2015 ICD-10 deadline, you may be wondering what you should do NOW to ensure your best chances of ICD-10 success. HCIM can help you triage your organization's ICD-10 readiness, benchmark your readiness against the industry, identify your critical failure points, and advise whether you need to develop a risk mitigation plan for key critical areas. Join our session to learn which questions you MUST ask your ICD-10 project team in order to get a full picture of your progress and to ascertain whether the path you're on will lead to a successful implementation.

Executive

C-Suite

Dept Managers

Where is Obamacare headed in 2015? S1

Presented by guest speaker Bill Barcellona

An overview of the mid-course corrections to the Affordable Care Act, how California is implementing the new law and where things may end up in 2015

Are Delegated Model Physician Groups Being Crowded Out of the Exchange? S4

Presented by guest speaker Bill Barcellona

High deductible products sold on Covered California don't work for capitated provider groups. How can information technology be changed to bring them back into the game?

Trends in Advance Care Planning:

Increasing Quality of Care Outcomes without Increasing Costs S9

Presented by guest speaker Scott Brown

This session will focus on the role that advance care planning can play in engaging all consumers – not just terminally ill patients – in their healthcare. The United States has an aging population, with as many as 10,000 “Baby Boomers” turning 65 every single day until sometime in 2019. When 75 million Baby Boomers begin talking about what kinds of medical treatments they would want in emergency, critical, and end-of-life care situations, the topic becomes culturally significant. Session participants will learn about the challenges that advance directives have faced in the past, how technology is helping consumers, clinicians and healthcare payers overcome those challenges, and how effective advance care planning can significantly increase quality of care outcomes without increasing associated medical costs or requiring “rationing” of care.

Making the move from volume to value-based models-- strategies for success S8

How is the industry evolving and what will it take to win in the future?

Managing Benchmarks and Revenue in an ACO S12

Learn the importance of managing the top line of the ACO's P&L by maximizing the benchmark.

Population Health - what does it really mean? S6

Panel Session will explore what the trending term “Pop Health” really means, and the role it plays in the transition of a care system from fee-based to value-based.

Medicare Shared Savings Program ACO 101 **S7**

Session includes the basic requirements for a CMS Medicare Shared Savings Program ACO, how a physician group or hospital system would benefit financially and what executives should consider for startup. Includes panel discussion with Q&A with ACO executives.

Analytics in a Value Based World **S11**

This session will present the features of EZ-ANALYTICS. Many statistical software products just can't handle such large, varied data sources. And because some products produce only static reports and graphs with no interactive capabilities for dynamically exploring data, it can be difficult to discover relationships and determine impacts to the organization without employing advanced statistical expertise. See how EZ-ANALYTICS can produce faster insights that lead to better decision without placing further burdens on IT.

Care Management Programs I **S4**

Learn about how foundational patient classification and coding programs can take you from risk to reward.

Care Management Programs II **S5**

Learn more about care outreach programs that can translate "high-touch" in to higher quality.

Environment Optimization **IT Managers** **Dept Managers**

Virtual Vs. Physical Environment (Pro's and Con's) **S2** **S9**

With the trend of many businesses moving towards virtualization, has it crossed your mind to hop in on the bandwagon? To help you determine whether the cost of implementing virtual machine technology is worthwhile, it is important to review all the facts. This session will cover the pros and cons of each solution. Get information to help you decide what solution will be best for your organization.

Hardware Performance Optimization and Troubleshooting **S7**

Learn how to optimally set up and configure SQL Server and the entire EZ CAP v6 product suite in your environment for peak performance. This session will cover both traditional server and virtual server environments and cover troubleshooting tips to help you find solutions fast.

Installation, Report Environment Set-up and DB Maintenance **S1** **S6**

This session will provide an in-depth review for how to properly install EZ-CAP, EZ-NET, EZ-EDI and EZ-CARE. Step by step instructions will be provided along with tips and tricks to make the installation process smoother. Learn how to create a report server and how to sync it with the latest production data. This class will emphasize the importance of proper and regular database maintenance and backup procedures to keep your databases safe and responsive.

EZ-NET Tips & Tricks **S5** **S7**

Learn all about EZ-NET configuration for provider, facility, vendor and provider. Also learn how to configure logos, tabs and dashboard in addition to various other features that could be turned on or off.

Schedule your Encounter Reporting using EZ-EDI **S7** **S10**

Do you know EZ-EDI can now schedule your encounter reporting once for all months? Discover the enhancements included in EZ-EDI to automate your Encounter Reporting.

Environment Optimization *(continued)*

Using Big Data and Analytics to Drive Business Value **S4**

In this session get a real world view of how using deep analytics packages can transform data in actionable insights. See how EZ-ANALYTICS makes providing the information your organization and stakeholders need easier than ever.

EZ-EDI Configuration – Do it right! **S4 S6**

EZ-EDI offers options for Electronic Data Interchange both real time or at a scheduled time. Learn how to configure & automate the different HIPAA format transactions for Claims, Eligibility, Authorizations and Claim Payments.

All you want to know about EZ-EDI Map Editor **S1 S8**

Session co-presented with client

This session will provide a detailed overview of the EZ-EDI Map Editor Application and its capabilities. We'll provide insight into business rules that will impact your ongoing operations and review some of the production issues that have been encountered by others and provide mapping solutions.

EZ-EDI 837 Outbound Mapping – Out of Pocket Reporting **S2 S5**

(Hands-on session in conjunction with All you want to know about EZ-EDI Map Editor)

Learn how to customize your 5010 maps to report Patient Responsibility in your Encounter Files.

Managing Medical Costs and Quality **Clinical Staff** **Dept Managers** **Users**

Moving the Quality Needle: Managing Your Metrics – HEDIS, P4P, STAR, ACO **S2**

72% of ACO's and PCMH's find the effective tracking and monitoring of quality outcomes challenging. 6 in 10 find the data extraction process for submitting required patient treatment and quality outcome data difficult. This session will discuss strategies to better track and monitor quality outcomes with our HEDIS, P4P and Analytics software.

Leveraging Pharmacy and Lab Data: Early Identification to Help Control Medical Costs **S3**

This session will explore how early identification and early interventions using Pharmacy data can result in savings and provide patients with better quality of care. The session will further demonstrate using analytics how to gain a better understanding and learn how to leverage key pharmacy data.

The Power of Risk Stratification **S5 S10**

This presentation will explore various risk identification methods to make clinical interventions and provide focused care coordination. Attention continues to grow on patients with complex health care needs, high health care expenditures, frequent hospitalizations and care in multiple settings from many providers. Identifying these patients for the right care coordination is critical to have success within the medical home.

Health Risk Assessments : Creation and Management **S10**

Learn how you can utilize EZ-CARE Surveys and Assessments to evaluate and improve the health status of your population and enhance your high risk and wellness programs.

Reconcile your Claims Inloads! **S11**

Overview of the recent enhancements to configure & track EZ-EDI Claims Inloads. Learn to reconcile the different totals from the inload files with EZ-CAP Claims module.

Outsourcing Star Improvement **S1**

The emerging exchange market has already impacted Medicare Advantage payers and consumers are using “star ratings” to comparison shop plans. Under the new Healthcare Reform law, Medicare Advantage Plans have the chance to improve their Medicare Advantage Star ratings and be awarded financially. This session will give an overview of what these “star ratings” mean and how it impacts your business. Learn how to improve a plan’s star ratings through data-driven, high-touch service designed to improve member experience and keep members healthy.

ANALYTICS and CARE and Wellness Module **S8**

Data is crunched, sliced, diced and processed through Johns Hopkins ACG predictive modelling engine and presented through business intelligence tool. Now use that critical analytical data to go through care management process for better quality and utilization.

Care Plans: Creation and Management **S6**

Whether you like to create your own Care Plans or want to utilize some of the industry standards, learn how EZ-CARE can help you organize, manage and report on your problems, goals, barriers and outcomes at a Case or Member level.

Risk stratification and population management using Rules Engine **S12**

Learn how rules engine in EZ-CARE could be used for population management with analysis of claims, cases, member eligibility information. Identify high risk, chronic or multi-morbid patients to manage costs and improve quality.

Creating Reports through Crystal **S11**

Learn how to write reports clearly and efficiently. This session will guide you through the EZ-CAP Data Elements and how to report using the EZ CAP Common Database (ECD), Views & Security. Learn the difference between an ECD view and a Company view. Know when you should use the ECD views versus the Company views. All will be explained to you by our Crystal Report Writers.

Creating Reports through Crystal Lab **S12**

(Hands-on session in conjunction with Creating Reports through Crystal)

Apply and practice what you learned in the Creating Reports through Crystal Class.

Maximizing Output **Dept Managers** **IT Managers** **Clinical Staff** **Users**

Claims Repricer & Retro Rate Adjustment Process (touch on Sequestration) **S1** **S8**

Users will learn new feature of retro rate and understand options for the repricing of claims due to new contracts or retro fee schedule changes. Utilization of this feature will reduce or eliminate the need to run external reports to find affected claims and will eliminate the need to adjust each claim individually.

Refunds & Reversals **S2** **S11**

Are you unfamiliar with the different ways to adjust a claim? Is there a way to keep track of the Refund checks you receive? This session will show you how to make the whole process easier. Find out what method is best for your organization.

EFT (EZ-CAP) / EFT (EDI) **S3**

Welcome to EFT, Electronic Funds Transfer! We’ll show you the changes included in v6.5.0 and how this can help initiate the claims payment process electronically with financial institutions. We will explain the EFT Process and the NACHA CCD+ Addenda (Healthcare EFT Standard) which can help you transition to a more paperless environment.

Maximizing Output *(continued)*

Claims Pricing [S4](#) [S9](#)

This session will cover one of the most important functions of EZ-CAP – how the system determines the Allowed Amount of a claim. It will cover the 12 different bases that are available within EZ-CAP. In addition, the course will cover how modifiers, geographic adjustments, and fee schedule assignments affect the Contract Value of a claim.

Auto Adjudication for Claims and Authorizations [S2](#) [S9](#)

This presentation will describe how the EZ CAP v6 auto-adjudication module can automate claims and authorizations processing. Learn how to improve efficiency and reduce expenses through this module. Highlights from actual client use will be included to show you real-life business value. We will provide you with some suggestions that you can take back and implement yourself whether you are a novice or an expert.

Workflow: How to maximize efficiency routing records to the right resources [S8](#)

This presentation will show users how to use the workflow module to route important data to various individuals and departments using predefined criteria such as eligibility issues, high dollar claims, and important diagnosis and procedure codes.

EZ-CAP Tips & Tricks [S3](#) [S10](#)

Let's get rid of the "I didn't know that?" Don't you love finding a better way to work within EZ-CAP? Remember the joy in finding out a new way to save time, then the regret of not knowing earlier? We can show you some of these items collected from clients and staff alike. Take advantage of all the great features our software has to offer to make your work day easier!

Benefit Matrix Round Table [S10](#)

Session co-presented with client

This session will engage clients with extensive knowledge of setup, configuration, and maintenance of the benefit matrix along with those who may still be in the configuration stage or for those who just need answers on how a benefit may be accommodated.

Customer Service [S6](#) [S10](#)

EZ-CAP's Customer Service Module is a great tool to chronicle and manage customer interactions. This session will give an in-depth overview of how to properly set-up and will provide examples of how it can be best utilized.

ICD9- ICD10 for EZ-CAP and EZ-EDI (Outload/Inload Utilities, etc) [S3](#) [S12](#)

This session will cover the changes that have been made in EZ-CAP and EZ-EDI in order to effectively transition from ICD-9 to ICD-10 Diagnosis Codes. This overview will cover the different screens in which diagnosis code changes may be needed, and will provide helpful hints for auto-denying claims in which the incorrect diagnosis code version was submitted.

Claim Shop [S7](#) [S11](#)

Did you know EZ-CAP can now do Medicare pricing and Edits? This session will show the seamless interface between EZ-CAP and MedAssets ClaimShop product. ClaimShop is a web service interface that submits EZ-CAP claims to MedAssets ClaimShop Pricer/Edit program and stores the results in the EZ-CAP claims.

EZ-EDI Tips & Tricks [S9](#) [S12](#)

So you think you know all there is to know about EZ-EDI? Attend this session and see what you may be missing. Learn about all the utilities included. Bring your own tips and tricks to share.

CONNECT

THE ORANGEMZI MARKETPLACE

Learn about products and services complementary to our suite of products from the many on-hand exhibitors. Plan to spend some time browsing through the OrangeMZI Marketplace exploring on your own. If you have a specific need, let us know when you register and we will make all the arrangements for you to speak to an organization that can help. Or if you'd prefer to explore the products and services during a scheduled session, the registration process provides an opportunity to select an hour just for that! Not sure about scheduling time to stop by the OrangeMZI Marketplace? End your first day with a visit to the OrangeMZI Marketplace where our conference sponsors invite you to a hosted Cocktail Hour. Take a half hour breather after lunch on Tuesday and join us in a little Afternoon Respite, also hosted by our sponsors. Delicious dessert, coffee and the opportunity to win door prizes are provided by our generous sponsors and exhibitors.



THE ORANGEMZI DEMONSTRATION ROOM

We are excited to share with you the new services and programs we now have to offer. See all the new features our product suite has available. You may select the demo room as one of your sessions, visit during one of your breaks, or make a private appointment with an OrangeMZI staff member to see any product and get information for services and programs that may be of interest to you.

New Services and Programs:

- Practice Management
- Patient Engagement
- Care Programs
- Quality Programs
- Strategic Advisor

Products:

- EZ-CAP
- EZ-EDI
- EZ-NET
- EZ-CARE
- EZ-ANALYTICS
- EZ-PARTNER
- CLAIM SHOP
- HEDIS PI

IT'S GAME TIME!!!



It's a full conference day Tuesday but you're out by 5:30PM. Relax before joining us at our Tuesday fun-filled evening! Then put your favorite jersey on and come join the whole gang as we ring in football season with our Platinum Sponsor Co-Hosted **Jersey Party!** Represent your team and wear your favorite jersey! Show your team pride and bring your team spirit! Party starts at 7pm...remember to RSVP on your registration form if planning on attending.

Platinum Sponsor Co-Hosted Evening by



REGISTER TODAY

COST

Early Bird Fees available through July 31:

- \$449 per person for a Full Conference Registration

Fees increase as of August 1:

- \$499 per person for a Full Conference Registration

WHAT IS INCLUDED?

- Attendance at the Opening Sessions, including an overview of the new company by CEO Howard Buff and a Question & Answer Session with Howard and Nicole Bradeberry, President.
- Participation in the three days of Educational sessions – with 4 “Paths” and over 40 unique sessions from which to choose.
- Conference manual and access to the session presentations via online
- Keynote address and featured speakers
- The OrangeMZI Demonstration Room – stop by and play with your product of choice and learn about new services and care programs
- Access to the OrangeMZI Marketplace, where you can learn about products and services complementary to our services, programs and suite of products from leading vendors
- An invite to a hosted cocktail hour presented by our conference sponsors at the OrangeMZI Marketplace
- An invite to OrangeMZI/Platinum Sponsor Co-Hosted **Jersey Party!**
- Continental breakfast and buffet lunch Monday, Tuesday & Wednesday
- Raffles & Prizes & Closing Session

HOW DO ATTENDEES REGISTER?

Registration is available on-line at: <https://www.etches.com/ucon>

Registration must be completed for each attendee. On-line registration service allows for registration of an individual attendee or multiple attendees with a single log-in. Confirmation of registration will be sent via email with a link to access your registration for future reference.

Registration closes as of September 5, 2014. Payment must be submitted prior to the conference in order for your registration to be confirmed.

No on-site registration will be available.

PAYMENT

Please make payments online. We accept Visa and Checks may also be made to: *Orange Health Solutions* and sent to: *Orange Health Solutions*
OrangeMZI UCON 2014
12276 San Jose Blvd, Ste 420
Jacksonville, Florida 32223

Payment for registration fees must be received no later than August 29, 2014. If registration payment is not received by August 29, 2014 this will cancel the registration and your organization will be charged for full payment.

CANCELLATION

Cancellations will be accepted, less a \$100 cancellation fee, up to August 22, 2014. No refunds will be issued after August 22, 2014.

→ ACCOMMODATIONS



Newport Beach Marriott Hotel & Spa is located in beautiful Newport Beach, just minutes from spectacular coastal splendor, yachting, water sports, championship golf and some of the finest shopping in the world.

OrangeMZI has negotiated excellent rates for this year's UCON. We have arranged for an initial block of rooms at the below rates. After our initial block is sold, additional rooms will be available at a somewhat higher, but still excellent, rate. The below rates will be available for stays September 14 through September 18 if you would like to arrive early or stay on later to enjoy the beautiful surroundings of Newport Beach.

ROOM RATES (for September 14-18)

- Single / Double Occupancy \$179¹
Complimentary internet access in all guest rooms

PARKING RATES

- Self parking \$21.00/day
- Valet parking \$28.00/day

Important Information

Reservations must be made no later than August 25, 2014 to receive the above UCON rates¹.

You may make your hotel reservations by calling the 800 reservation line at 877-622-3056 or on-line by visiting: <https://resweb.passkey.com/go/mzi>

Please mention MZI HealthCare when making your reservation in order to receive the conference rates.

(1) Cut-off for discounted rate is Monday, August 25, 2014, after which reservations will be accepted on a space and rate available basis.

FUN UNDER THE SUN

EXTRA TIME IN YOUR SCHEDULE?

Newport Beach offers plenty of fun under the California sun! Fantastic weather, gorgeous beaches, celebrated art, and delicious restaurants allow you to make the most of your stay. Cruise down the boardwalk on a beach cruiser or spend the day shopping, where you'll discover some of the finest retailers in the country.



- Steps away from Fashion Island, where you'll find retail shops and 40 world-class restaurants.



- World-class oceanfront dining in Newport Beach, easily accessible via magnificent Pacific Coast Highway
- Minutes to Disneyland and other major Orange County attractions
- Minutes to many of Southern California's finest beaches, including Corona del Mar, Dana Point and Laguna beaches
- Daily boat service to the scuba diving and horseback riding haven of Catalina Island - available from nearby Balboa Pavilion
- Scenic harbor tours aboard Hornblower Cruises, featuring weekend Dinner Dance Cruises and Sunday Champagne Brunch Cruise events
- Several championship golf courses only moments away (Within fifteen to thirty minutes - Tustin Ranch Golf Club, Monarch Beach Golf Links, Strawberry Farms Golf Club)
- 1 mile from quaint Balboa Island



WHY GO ANYWHERE AT ALL?

The amenities at the Marriott include gift shop, restaurant, lounge, spa, two outdoor swimming pools, whirlpool and health club.



- Pure Blu, the Spa at Newport Beach Marriott (Appointment only: 949.720.7900)



- Fitness Center, open 24 hours @ no charge, includes: Cardiovascular Cardiotheater equipment, Free weights



- Sam & Harry's Steakhouse
- The Lounge at Sam & Harry's



- Starbucks Marketplace

TRANSPORTATION

Driving:

To get to the conference hotel from John Wayne Airport (SNA), approximately 6 miles away, Los Angeles International (LAX), 50 miles away, and other locations use the link to MapQuest: <http://www.mapquest.com/>

Car Rentals:

We have negotiated a car rental discount for UCON. To obtain the discount, use the discount numbers below:

- Budget - BCD# Y013557, www.budget.com
- Hertz - Discount Code:2043979, www.hertz.com

Other Shuttle Services:

- Super Shuttle 800.258.3826 www.supershuttle.com
- Prime Time Shuttle 800.733.8267 www.primetimeshuttle.com

Sorry, no hotel airport shuttle available.