

Cloud File Server Desktop Edition
Installation Guide
【For General User】

Version 1.0

November 01, 2016

FUJITSU LIMITED

<Revision History>

Version	Issue Date	Contents
1.0	Nov 01, 2016	-

.....

Contents

.....

1.	Introduction.....	4
2.	Purpose of this Guide	4
3.	Position of this Guide	4
4.	System Requirements	5
5.	Installation	6
6.	Login	13
7.	Logout	15
8.	Uninstallation.....	16

This Guide was prepared based on information available up to Nov 01, 2016. Content of the Guide is subject to change without prior notice.

Unauthorized copy or reproduction of this Guide is prohibited.

All company, product, system or service names mentioned in this Guide are trademarks or registered trademarks of their respective.

1. Introduction

Cloud File Server (hereafter File Server) is a files storage / sharing service using Cloud Computing technology.

2. Purpose of this Guide

This installation guide provides detailed procedures on installation, update, or uninstallation of the desktop application which enables general users to make use of general functions of Cloud File Server without using Internet Explorer. As for operating instructions, see “Cloud File Server Operation Manual [General User Edition]”. And also, it is recommended to see the separate volume “Cloud File Server User’s Guide” before reading this guide.

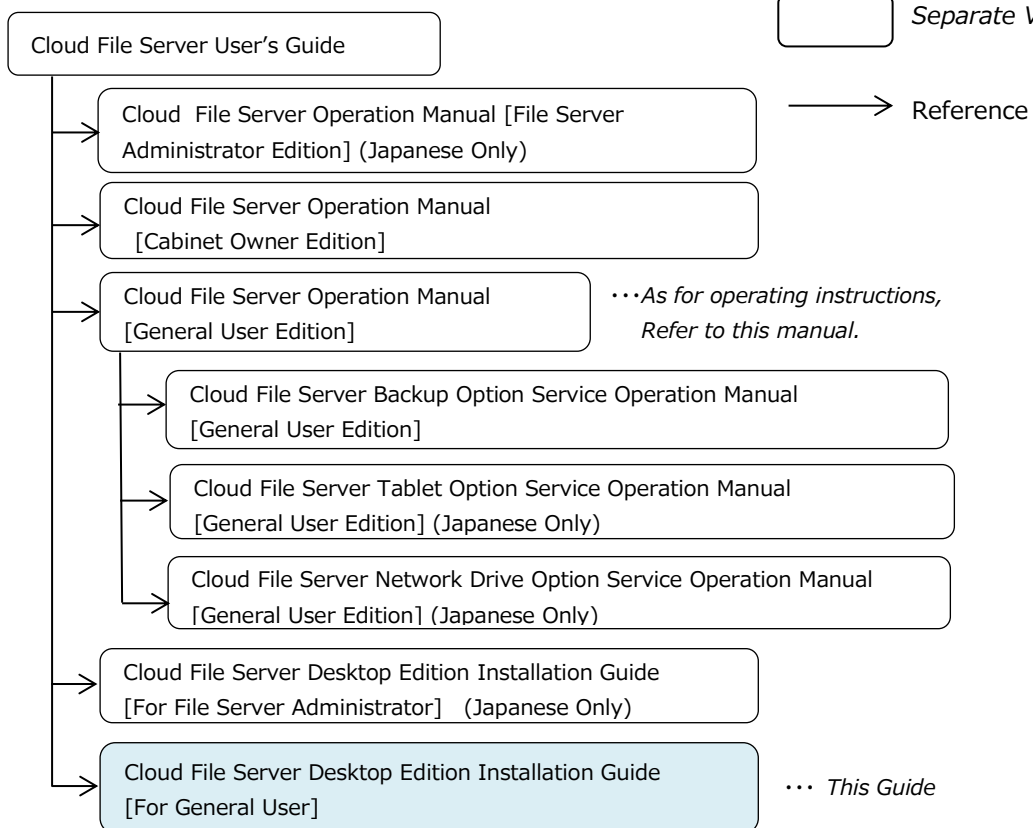
3. Position of this Guide

Reference relationship between this Guide and other documents is shown below.

Refer to relevant document as needed.

 This guide

 Separate Volume



4. System Requirements

In this chapter, you learn Client PC (hereafter PC) requirements for using File Server.

PC requirements

OS	Microsoft Windows7 Professional/Ultimate/Enterprise【32bit/64bit】 SP1 (Japanese/English)
	Microsoft Windows8.1/Windows8.1 Pro【32bit/64bit】 (Japanese/English) ※Operating in Windows RT not available
	Microsoft Windows10 Pro/ Enterprise【32bit/64bit】 (Japanese/English)
Software	Microsoft .NET Framework4 or more
Memory	1GB or more
CPU	Should meet system requirements for running the OS.
Screen resolution	1024×768 or higher
Hard Disk space	While uploading and downloading, file encryption and decryption is executed on the PC. Free space larger than the total size of files uploaded or downloaded at one time is required.
Network	<p>Must Connect with connection destination information (URL) described in the“Set-up Report”.</p> <ul style="list-style-type: none"> - When the connection destination from the PC is limited with Firewall or others in the customer environment, the administrator should do the setting that permits the connection to connection destination information (URL) described in the “Set-up Report”. - The “Set-up Report” is sent to a person in charge of using this service.

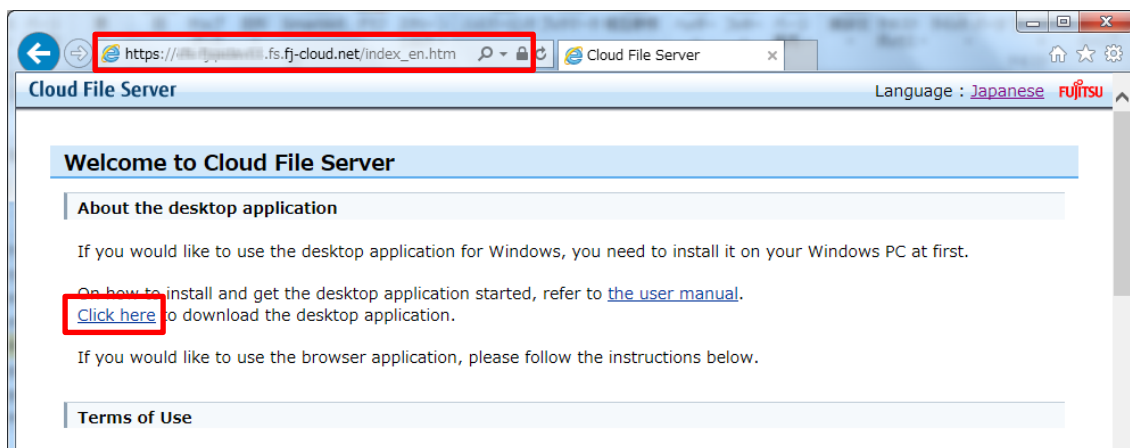
5. Installation

In this chapter, you learn how to install Cloud File Server Desktop Application.

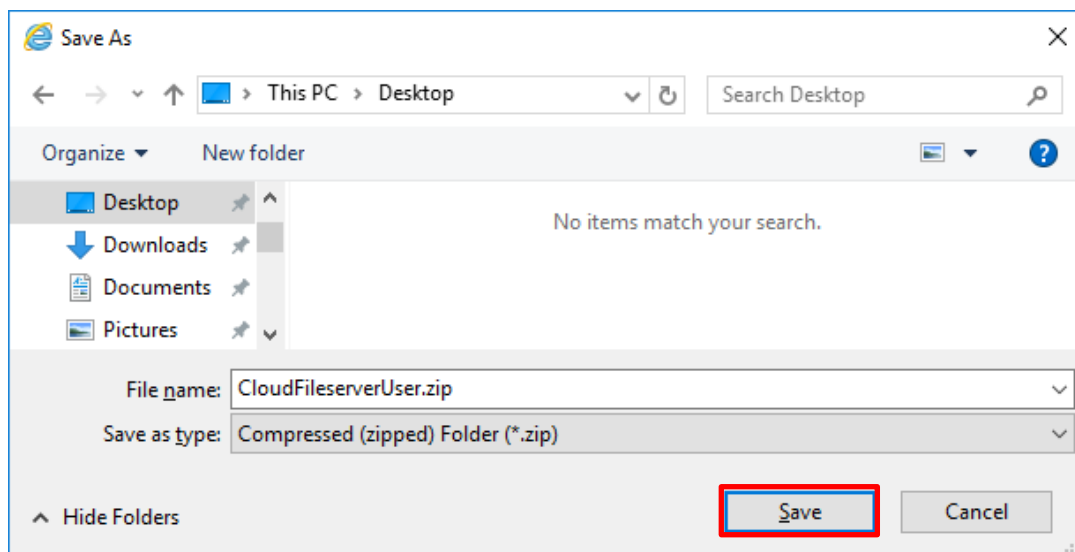
(1) Download [CloudFileserverUser.zip]

Open [Welcome to Cloud File Server] page (https://***.fs.fj-cloud.net/) using Internet Explorer, and then click the link “[Click here](#)” in the section “About the desktop application” to download a zip file [CloudFileserverUser.zip] including the executable installer.

※ Subdomain (***) of URL is different depending on the user.

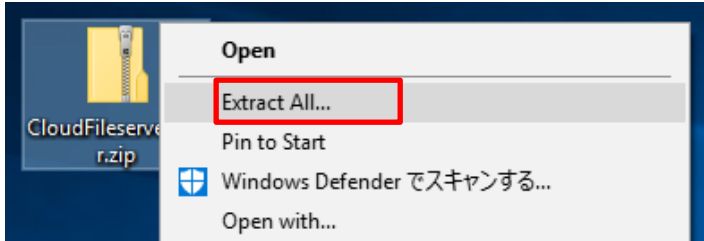


The open or save dialog will come up at the bottom of Internet Explorer, then select [save▼]-[save as] option to save the zip file to your PC.



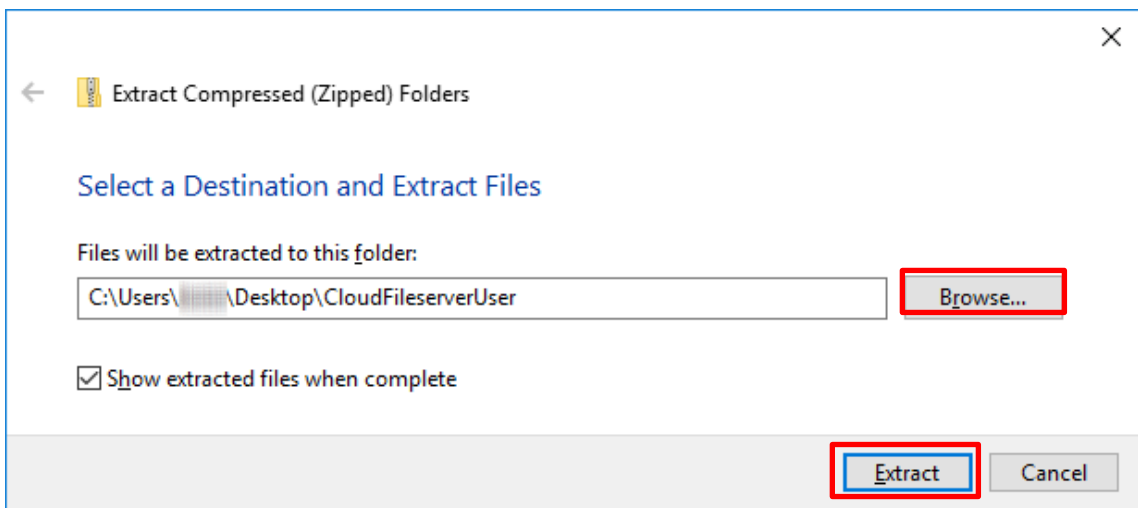
(2) Unzip [CloudFileserverUser.zip]

Right-Click on [CloudFileserverUser.zip], then select “Extract All” in the context menu.

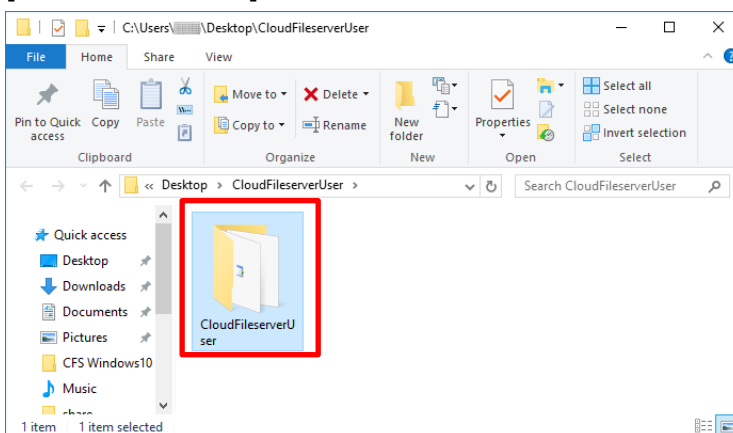


[Extract Compressed (Zipped) Folders] dialog will appear.

Click [Browse...] and navigate to where you would like to save the files, then click [Extract].



[CloudFileserverUser] folder will be extracted.

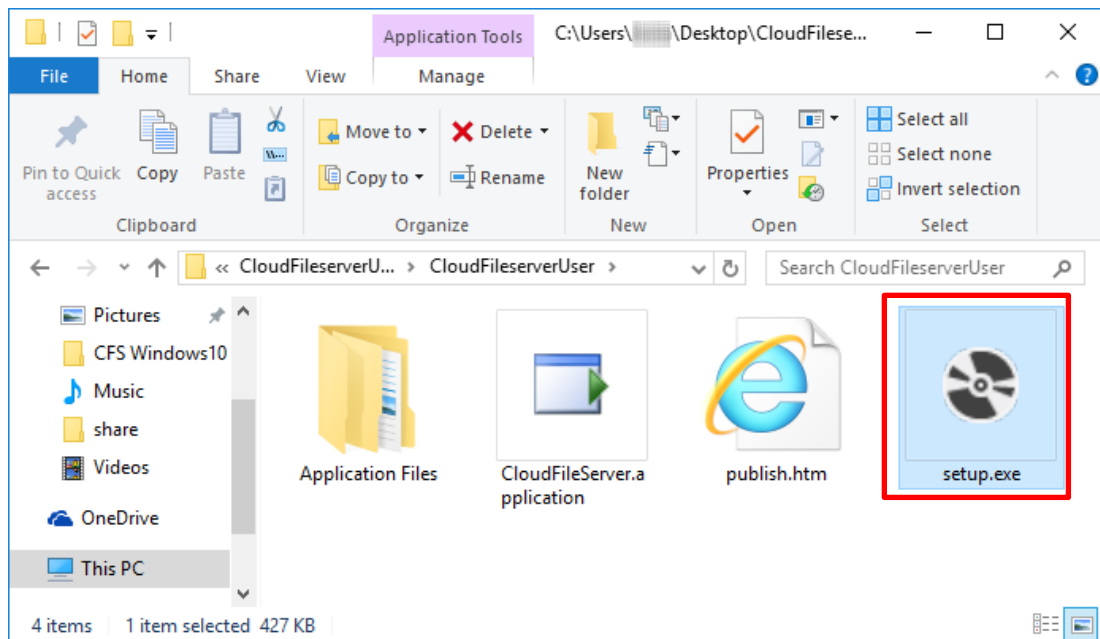


(3) Install the desktop application

<Caution ! >

- > Please make sure that your computer is connected to the internet before performing the installation.

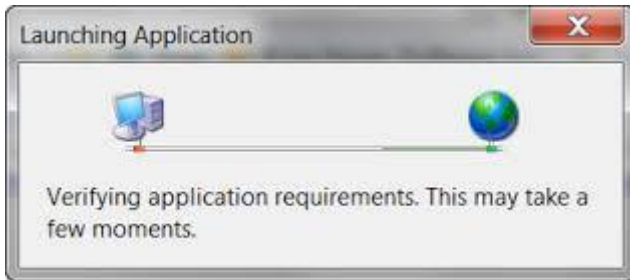
Double-click [setup.exe] in the folder [CloudFileserverUser].



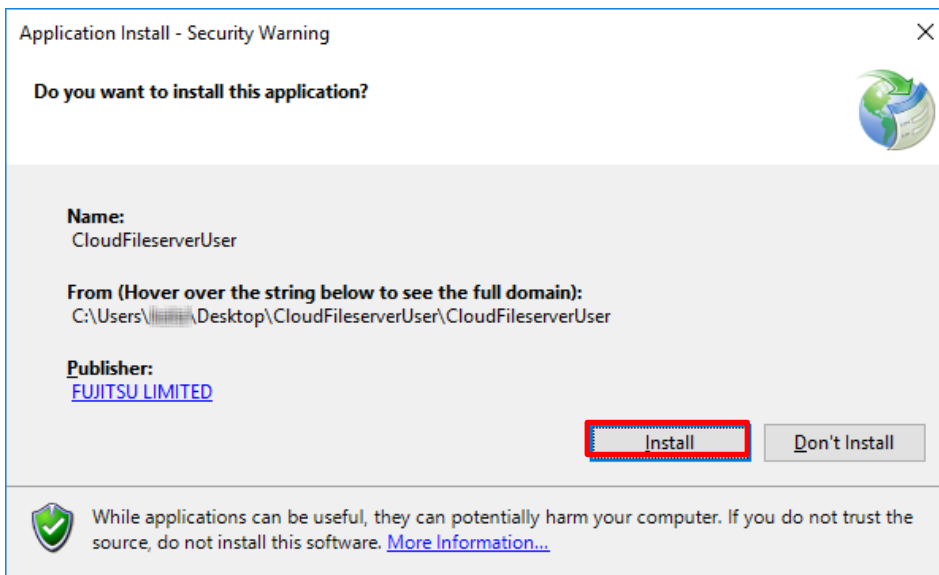
If [Open File - Security Warning] dialog appears, click [Run].



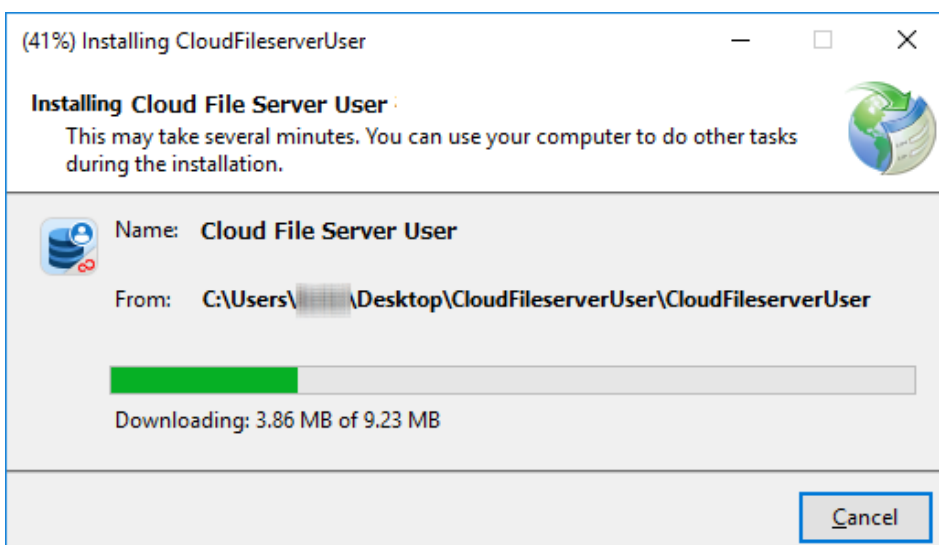
[Launching Application] will appear. Wait for a while.



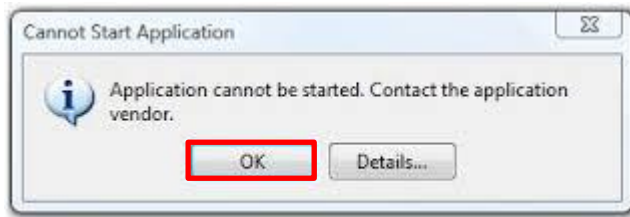
Click [Install] to [Application Install – Security Warning] dialog.



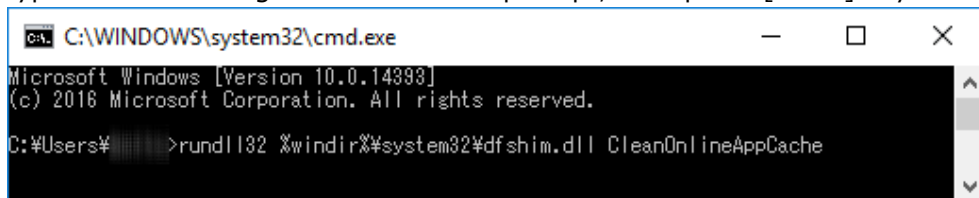
[Installing Cloud File Server User] will appear. Wait for a while.



< If [Cannot Start Application] error should show up >



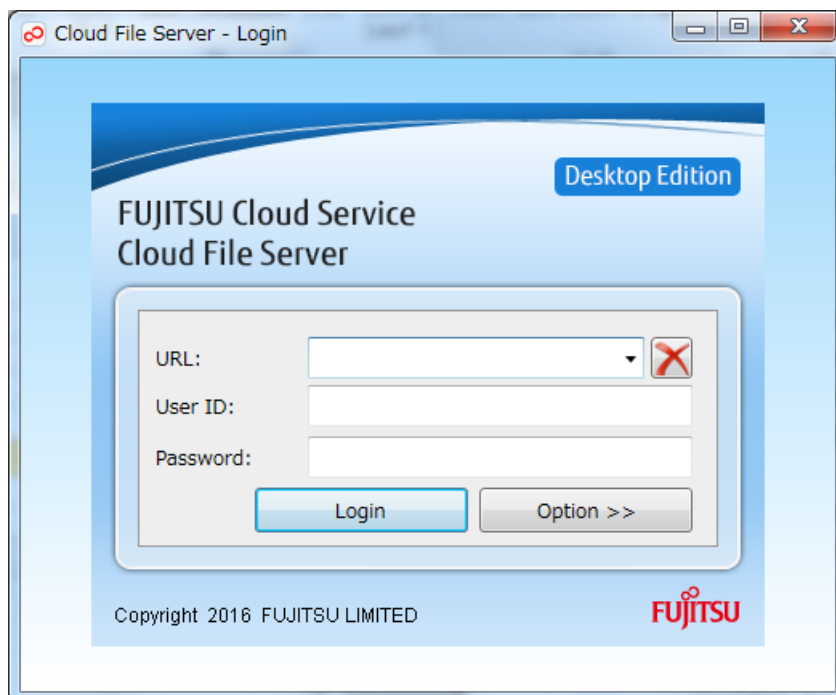
1. Click [OK] to close the popup.
2. Launch command prompt.
Press the [Windows logo key] and [R key], and [Run] dialog will appear.
Type in "cmd", and then click [OK].
3. Type in the following command at the prompt, then press [Enter] key.



rundll32 %windir%\system32\dfshim.dll CleanOnlineAppCache

4. Run [setup.exe] again.

Login dialog box of Cloud File Server Desktop Edition will appear if the installation has successfully completed.



(4) Delete unwanted file and folder

Delete the following used during the installation.

- Zip file [CloudFileserverUser.zip]
- Folder 「CloudFileserverUser」

(5) How to launch Cloud File Server Desktop Application from the next time

Select the Windows Start icon on the left end of the taskbar or press the Windows logo key on your keyboard to open the Start menu, then select [Cloud File Server User] from the program list.

If not listed, enter "Cloud File Server User" into Search Box (*), then select "Cloud File Server User" from the search results.

(*) Search Box is as follows.

[Search programs and files] box on the Start menu in Windows7.

[Search] box on the top right of Start menu in windows8.1.

[Search web and windows] box on the left end of the taskbar in Windows10.



<Creating a shortcut to Cloud File Server Desktop Application>

Shortcut enables you to quickly launch Cloud File Server Desktop Application.

【Windows 7】

Select [All programs] in the Start Menu and go to [Cloud File Server] folder. Right-click on [Cloud File Server User], then select [Send to] > [Desktop (Create shortcut)] and a shortcut will be created on your desktop.

【Windows 8.1】

When you move the cursor to top-right corner of screen, "Charms Bar" is shown. Select [Search] and type in "Cloud File Sever". Right-click on [Cloud File Server User] in search results and select "Open file location". Right-click on [Cloud File Server User] icon from list of files in Windows Explorer, select [Create shortcut]. Click [Yes] to dialog box "Windows can't create a shortcut here. Do you want the shortcut to be placed on the Desktop

instead?”, and a shortcut will be created on your desktop.

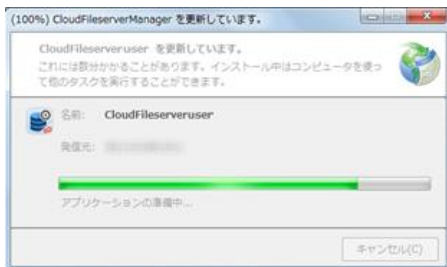
【Windows 10】

Click the Start button, and select [All Apps].

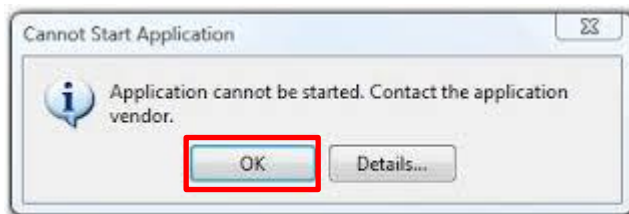
Drag and drop [Cloud File Server User] to your desktop.

(6) How to update Cloud File Server Desktop Application

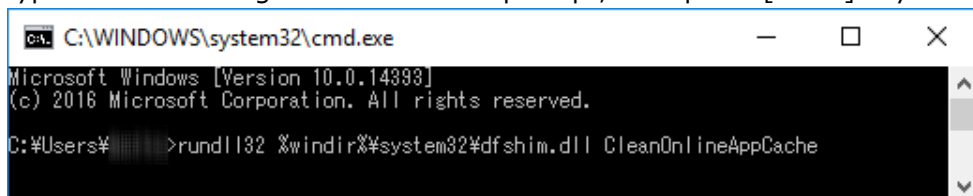
Cloud File Server Desktop Application checks if an update is available every time that the user starts the application. If an update is available, it will be automatically downloaded and started with the following popup message. If the following popup message shows up, wait for a while.



< If [Cannot Start Application] error should show up >



1. Click [OK] to close the popup.
2. Launch command prompt.
Press the [Windows logo key] and [R key], and [Run] dialog will appear.
Type in "cmd", and then click [OK].
3. Type in the following command at the prompt, then press [Enter] key.



`rundll32 %windir%\system32\dfshim.dll CleanOnlineAppCache`

4. Try to launch Cloud File Server Desktop Application again.

6. Login

In this chapter, you learn how to login to User Portal.

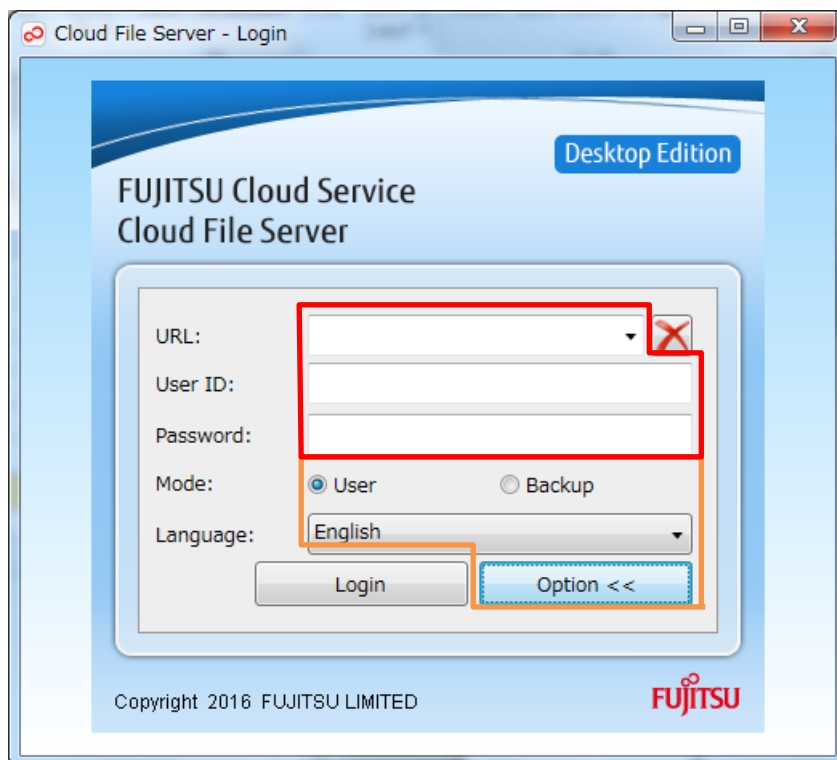
(1) Login

Launch Cloud File Server Desktop Application using Windows Start Menu or a shortcut [Cloud File Server User] on your desktop.

Enter the following and click [Login].

If you'd like to change the language or login to Backup Option Service, click [Option <<].

- 「URL」 Enter URL (e.g. https://***.fs.fj-cloud.net/)
- 「User ID」 Enter your User ID
- 「Password」 Enter your Password
- 「Option <<」
 - ◇ 「Mode」 Choose User Portal mode or Backup Option mode
 - ◇ 「Language」 Choose Language

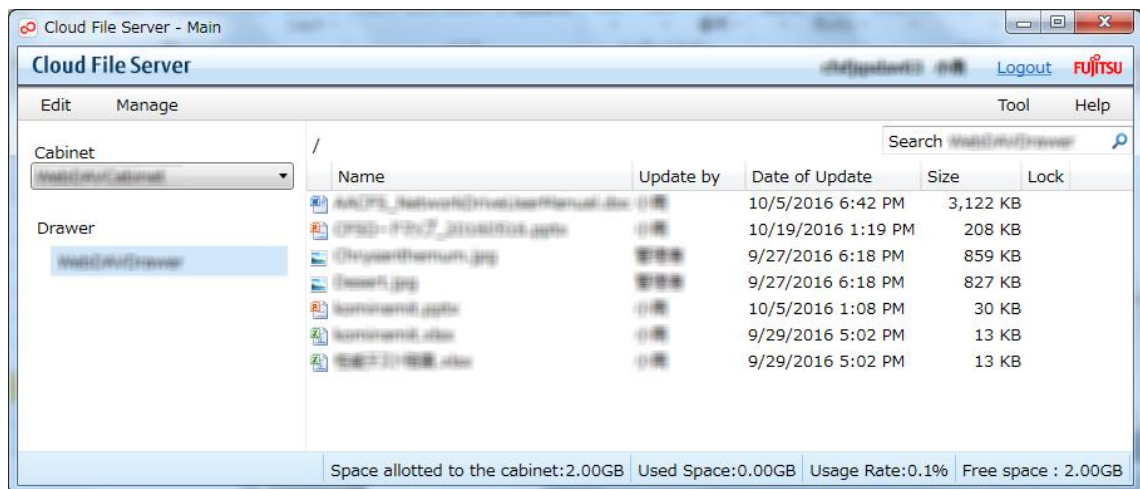


<If Proxy authentication is required for your network>

The following dialog box will show up only once when you login to User Portal for the first time. Enter your Username and Password for Proxy Authentication, then click [OK].

(2) User Portal

When you login successfully, the User Portal will be displayed.



※As for operating instructions, see “Operation Manual [General User Edition]” listed in Help menu.

7. Logout

In this chapter, you learn how to logout from User Portal and exit from Cloud File Server Desktop Application.

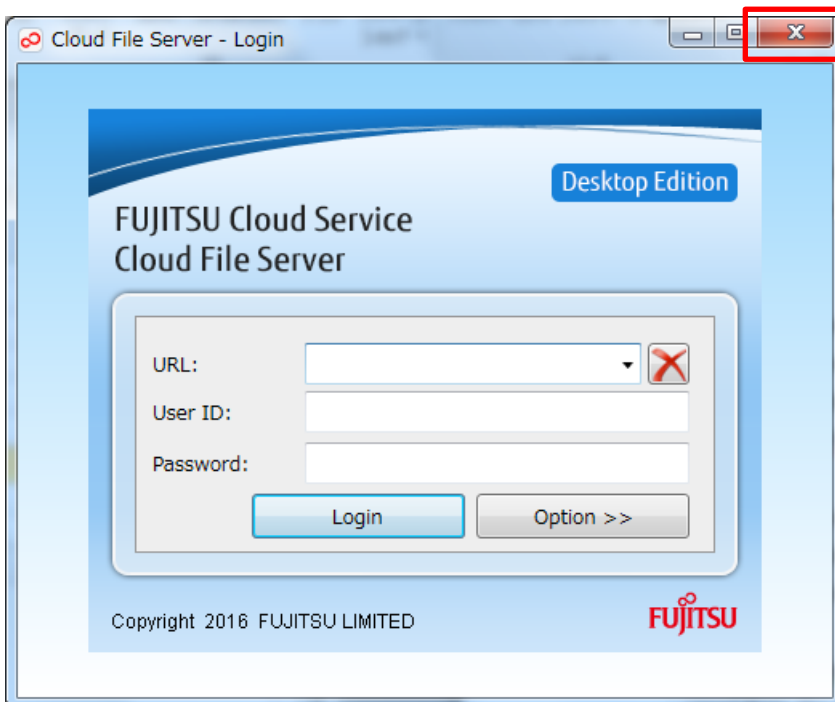
(1) Logout

To logout from the User Portal, click [Logout] on the upper right corner of the page (Header).



(2) Login Page

When you logout, the Login Page will appear. Click Close button [x] on the upper right corner of the page to exit from Cloud File Server Desktop Application.



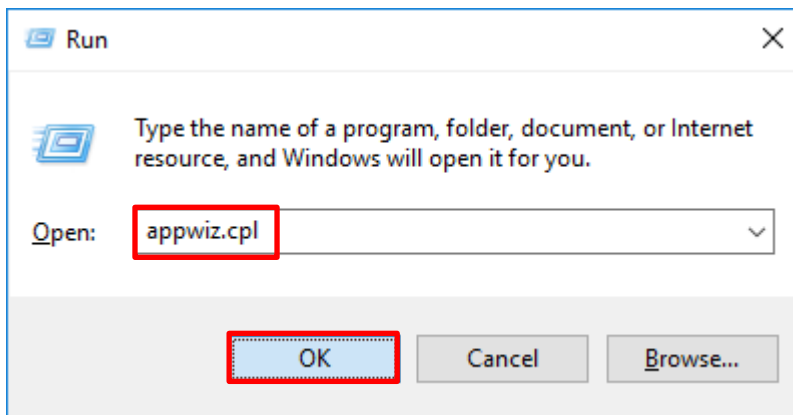
8. Uninstallation

In this chapter, you learn how to uninstall Cloud File Server Desktop Application.

- (1) Run “appwiz.cpl”

Press the [Windows logo key] and [R key], and [Run] dialog box will appear.

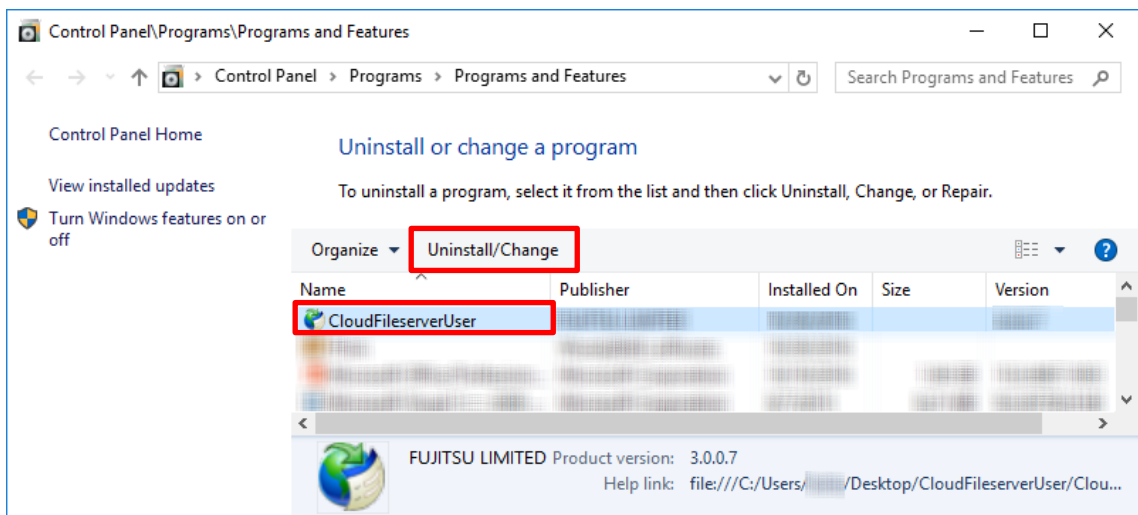
Type in “appwiz.cpl”, then click [OK].



- (2) [Uninstall or Change a program] will appear.

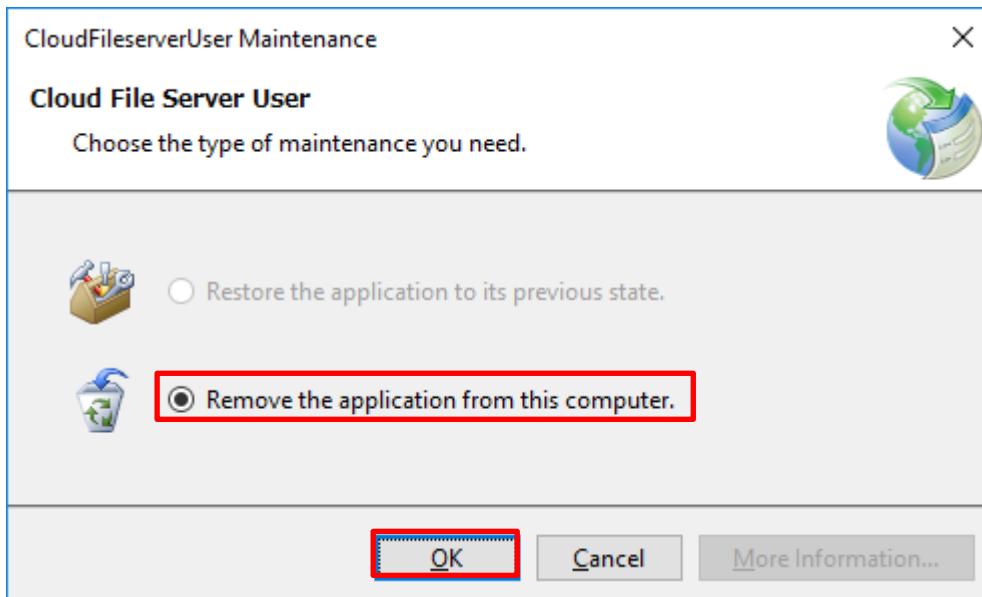
Select [Cloud File Server User] from the program list, and click [Uninstall/Change] button.

e.g. [Windows 10]

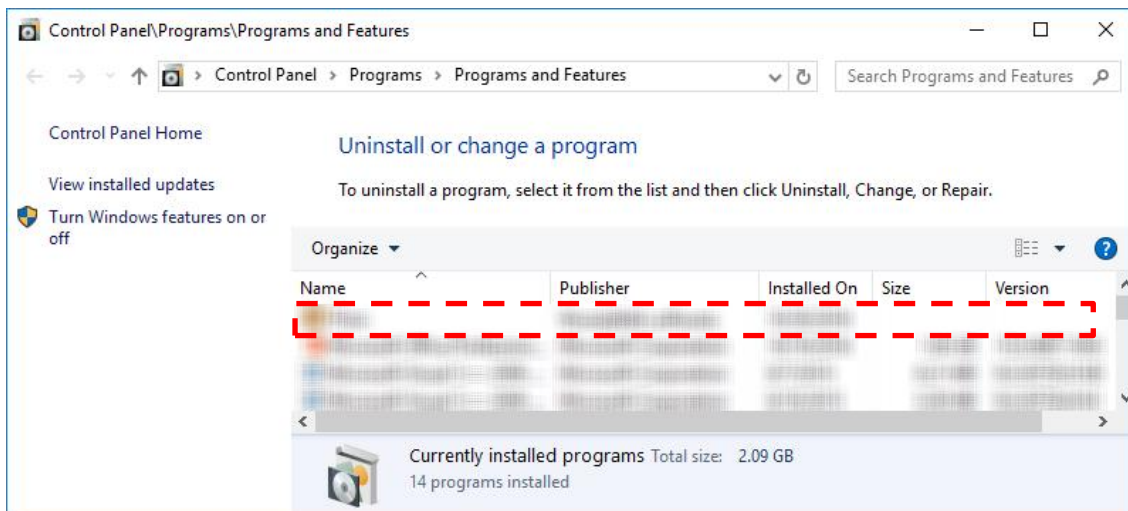


(3) Uninstall “Cloud File Server User”

Click [OK] to the following dialog.



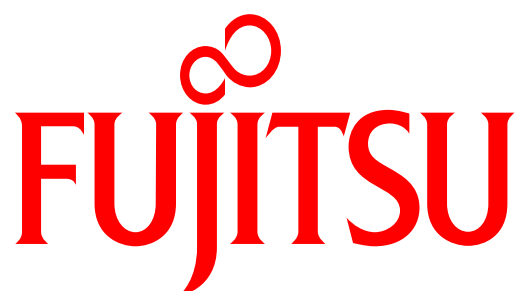
[Cloud File Server User] will be removed from the program list if the uninstallation has successfully completed.



(7) Delete unwanted file and folder

Delete them if the following exist on your PC.

- Zip file [CloudFileserverUser.zip]
- Folder [CloudFileserverUser]



shaping tomorrow with you