

SB5100 Series Cable Modem User Guide

Click your selection (there is a complete [Contents](#) on page v):

Introduction

Introduces your SURFboard cable modem and the controls on the [Top and Front Panel](#) and [Rear Panel](#).

Before You Begin

Lists the items needed to install your SURFboard cable modem and describes [Precautions](#), [Signing Up for Service](#), and [Computer System Requirements](#).

Installation and Configuration Overview

Provides an overview and links for cabling and configuring your SURFboard cable modem, including [Setting Up a USB Driver](#).

Troubleshooting

Provides suggestions to fix common problems.

Contact Us

Provides contact information.

Frequently Asked Questions

Provides answers to common questions about the SURFboard cable modem.



SURFboard®
Cable Modem

WARNING: TO PREVENT FIRE OR SHOCK HAZARD, DO NOT EXPOSE THIS DEVICE TO RAIN OR MOISTURE. THE DEVICE SHALL NOT BE EXPOSED TO DRIPPING OR SPLASHING AND NO OBJECTS FILLED WITH LIQUIDS, SUCH AS VASES, SHALL BE PLACED ON THE DEVICE.

CAUTION: TO ENSURE REGULATORY AND SAFETY COMPLIANCE, USE ONLY THE PROVIDED POWER AND INTERFACE CABLES. TO PREVENT ELECTRICAL SHOCK, DO NOT USE THIS PLUG WITH AN EXTENSION CORD, RECEPTACLE, OR OTHER OUTLET UNLESS THE BLADES CAN BE FULLY INSERTED TO PREVENT BLADE EXPOSURE.

CAUTION: DO NOT OPEN THE UNIT. DO NOT PERFORM ANY SERVICING OTHER THAN THAT CONTAINED IN THE INSTALLATION AND TROUBLESHOOTING INSTRUCTIONS UNLESS YOU ARE QUALIFIED TO DO SO. REFER ALL SERVICING TO QUALIFIED SERVICE PERSONNEL.

Caution: Changes Or Modifications Not Expressly Approved By The Party Responsible For Compliance Could Void The User's Authority To Operate The Equipment.

It is recommended that the customer install an AC surge arrester in the AC outlet to which this device is connected. This is to avoid damaging the equipment by local lightning strikes and other electrical surges.



This product was qualified under test conditions that included the use of the supplied cable between system components. To be in compliance with regulations, the user must use this cable and install it properly.



Different types of cord sets may be used for connections to the main supply circuit. Use only a main line cord that complies with all applicable product safety requirements of the country of use.

Installation of this product must be in accordance with national wiring codes.

To prevent overheating, do not block the ventilation holes on the sides of the cable modem.

Wipe the cable modem with a clean, dry cloth. Never use cleaning fluid or similar chemicals. Do not spray cleaners directly on the unit or use forced air to remove dust.

This device complies with part 15 of the FCC Rules. Operation is subject to the following two conditions: (1) This device may not cause harmful interference, and (2) this device must accept any interference received, including interference that may cause undesired operation.

Note: This equipment has been tested and found to comply with the limits for a Class B digital device, pursuant to part 15 of the FCC.

Rules. These limits are designed to provide reasonable protection against harmful interference in a residential installation. This equipment generates, uses and can radiate radio frequency energy and, if not installed and used in accordance with the instructions, may cause harmful interference to radio communications. However, there is no guarantee that interference will not occur in a particular installation. If this equipment does cause harmful interference to radio or television reception, which can be determined by turning the equipment off and on, the user is encouraged to try to correct the interference by one or more of the following measures:

- Reorient or relocate the receiving antenna.
- Increase the separation between the equipment and receiver.
- Connect the equipment into an outlet on a circuit different from that to which the receiver is connected.
- Consult the dealer or an experienced radio/TV technician for help.

This Class B digital apparatus meets all requirements of the Canadian Interference Causing Equipment Regulations.

Cet appareil numérique de la classe B respecte toutes les exigences du Règlement sur le matériel brouilleur du Canada.



This product is provided with a separate a separate *Regulatory, Safety, Software License, and Warranty Information* card. If one is not provided with this product, please ask your service provider or point-of-purchase representative, as the case may be.

- THIS PRODUCT IS IN COMPLIANCE WITH ONE OR MORE OF THE STANDARDS LISTED ON THE *REGULATORY, SAFETY, SOFTWARE LICENSE, AND WARRANTY INFORMATION* CARD. NOT ALL STANDARDS APPLY TO ALL MODELS.
- NO WARRANTIES OF ANY KIND ARE PROVIDED BY MOTOROLA WITH RESPECT TO THIS PRODUCT, EXCEPT AS STATED ON THE *REGULATORY, SAFETY, SOFTWARE LICENSE, AND WARRANTY INFORMATION* CARD. MOTOROLA'S WARRANTIES DO NOT APPLY TO PRODUCT THAT HAS BEEN REFURBISHED OR REISSUED BY YOUR SERVICE PROVIDER.

Copyright © 2003 by Motorola, Inc.

All rights reserved. No part of this publication may be reproduced in any form or by any means or used to make any derivative work (such as translation, transformation or adaptation) without written permission from Motorola, Inc.

Motorola reserves the right to revise this publication and to make changes in content from time to time without obligation on the part of Motorola to provide notification of such revision or change. Motorola provides this guide without warranty of any kind, either implied or expressed, including, but not limited to, the implied warranties of merchantability and fitness for a particular purpose. Motorola may make improvements or changes in the product(s) described in this manual at any time.

MOTOROLA and the Stylized M Logo are registered in the US Patent & Trademark Office. Microsoft, Windows, and Windows Me are registered trademarks and Windows XP is a trademark of Microsoft Corporation. Microsoft Windows screen shots are used by permission of Microsoft Corporation. Macintosh is a registered trademark of Apple Computer, Inc. Navigator is a registered trademark of Netscape Communications Corporation. UNIX is a registered trademark of the Open Group in the United States and other countries. All other product or service names are the property of their respective owners. © Motorola, Inc. 2003.



Contents

Introduction	1
Top and Front Panel	2
Rear Panel	3
Before You Begin	4
Precautions	5
Signing Up for Service	6
Computer System Requirements	7
Ethernet Card	7
USB Connection	7
Installation and Configuration Overview	8
Cabling and Startup for a Single User	9
Setting Up a USB Driver	11
Setting Up a USB Driver in Windows 98	12
Setting Up a USB Driver in Windows 2000	16
Setting Up a USB Driver in Windows Me	20
Setting Up a USB Driver in Windows XP	21
Configuring TCP/IP	22
Configuring TCP/IP in Windows 95, 98, or Windows Me	23
Configuring TCP/IP in Windows 2000	26



Configuring TCP/IP in Windows XP	30
Verifying the IP Address	36
Verifying the IP Address in Windows 95, 98, or Windows Me	37
Verifying the IP Address in Windows 2000 or Windows XP	38
Renewing your IP Address	39
Cabling for Multiple Users	40
Ethernet and USB	40
Ethernet	41
Troubleshooting	42
Front-Panel Lights and Error Conditions	44
Removing the USB Driver from Windows 98 or Windows Me	45
Removing the USB Driver from Windows 2000	49
Removing the USB Driver from Windows XP	54
Contact Us	61
Frequently Asked Questions	62
Glossary	64
Software License	66

Easier!

Unlike dial-up modems or ISDN, you're always on, always connected. For easiest set-up, use the Installation Assistant on the SURFboard Cable Modem CD-ROM.

Faster!

Your cable modem is up to 100 times faster than a dial-up modem. It lets you enjoy surfing the web without the long wait. Because many network and other factors can affect performance, the actual speed will vary.

Better!

Your cable modem is made by the company with over 50 years of cable TV expertise.

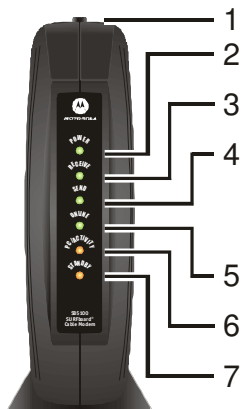
➤ Introduction

Congratulations, you have a new Motorola® SURFboard® cable modem. It provides high-speed access to the Internet and other online services. This cable modem transmits and receives data much faster than traditional dial-up or ISDN modems. Unlike a dial-up modem, your SURFboard cable modem is always online. *Just open your browser and surf!*

You can use your high-speed, upgradeable cable modem to connect one or more computers in your home or business to the Internet. You can connect:

- A single computer equipped with a Universal Serial Bus (USB) port directly to the USB port on the SURFboard cable modem
- A single computer equipped with an Ethernet adapter directly to the Ethernet port on the SURFboard cable modem
- Two computers; one to the USB port and one to the Ethernet port
- Up to 32 computers to a single SURFboard cable modem using an Ethernet hub, as shown in “Cabling for Multiple Users” on page 40

The model number on your cable modem may be different than in the illustrations and screen images in this guide.



Top and Front Panel

For added security, you can press the Standby button (1) to suspend your Internet connection. No data is transmitted or received from the Internet when the Standby light is on. All other front-panel lights turn off until you press the Standby button again.

The lights provide information about power, communications, and errors:

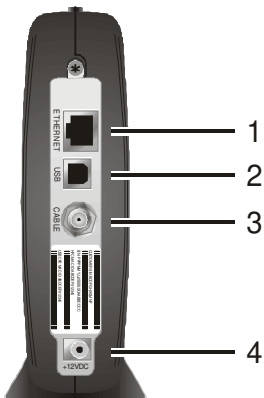
Key	Light	Flashing	On
2	Power	Startup diagnostics in progress	The cable modem is powered on
3	Receive	Scanning for a receive (downstream) channel connection	The downstream channel is connected
4	Send	Scanning for a send (upstream) channel connection	The upstream channel is connected
5	Online	Scanning for a network connection	The startup process is complete
6	PC/Activity	Transmitting or receiving data	A device, such as a computer or hub, is connected to the USB or Ethernet connectors on the back panel.
7	Standby	This light does not flash	Internet service is blocked because the Standby button was pressed. If this light is on, all other lights are off.

During normal operation, the Power, Receive, Send, and Online lights are on and the PC/Activity light flashes when the cable modem is transferring data.

▣ Rear Panel

The rear panel provides cabling connectors and the power receptacle.

Key	Item	Description
1	ETHERNET	The Ethernet port provides a connection to Ethernet equipped computers using a cable terminated with an RJ-45 connector.
2	USB	The USB port provides a connection to USB equipped computers.
3	CABLE	The CABLE port provides a connection to the coaxial cable (coax) outlet.
4	+12VDC	This connector provides power to the cable modem.



▣ Before You Begin

Before you begin the installation, check that you received the following items with your SURFboard cable modem:

Item

Power adapter



**10/100Base-T
Ethernet cable**



USB cable



***SURFboard Cable
Modem CD-ROM***



Description

Connects the SURFboard cable modem to a power adapter to connect to the AC electrical outlet

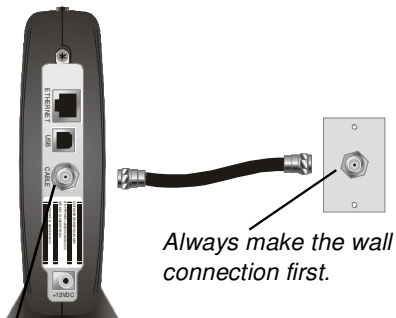
Connects to the [Ethernet](#) port

Connects to the [USB](#) port

Contains the User Guide and USB drivers

You will need 75-ohm [coaxial cable](#) with [F-type connectors](#) to connect your cable modem to the nearest cable outlet. If a TV is connected to the cable outlet, you may need a 5-900 MHz RF [splitter](#) and a total of three coaxial cables to connect both the TV and the cable modem. The coaxial cable and RF splitter are available at consumer electronic stores.

To avoid damaging your cable modem or PC with static electricity:



Always make the wall connection first.

Before you connect or disconnect the USB or Ethernet cable, *always touch the coaxial cable connector on the cable modem.*

⚡ Precautions

Postpone cable modem installation until there is no risk of thunderstorm or lightning activity in the area.

To avoid damaging the cable modem with static electricity:

- Always first connect the coaxial cable to the grounded cable TV wall outlet.
- Before you connect or disconnect the USB or Ethernet cable from your cable modem or PC, always touch the coaxial cable connector on the cable modem to release any static charges.

To prevent overheating the cable modem, do not block the ventilation holes on its sides.

Do not open the cable modem. Refer all service to your cable service provider.

Wipe the cable modem with a clean, dry cloth. Never use cleaning fluid or similar chemicals. Do not spray cleaners directly on the unit or use forced air to remove dust.

➤ Signing Up for Service

You must sign up with a cable service provider to access the Internet and other online services.

To activate your service, call your local cable service provider.

*To receive data service, you need to provide the [MAC address](#) printed on the bar code label marked **CM HFC MAC ID** on the bottom of the cable modem. You can record it here:*

00 : _____ : _____ : _____ : _____

You should ask your cable service provider the following questions:

- Do you have any special system requirements?
- When can I begin to use my cable modem?
- Are there any files I need to [download](#) after I am connected?
- Do I need a user name or password to access the Internet or use e-mail?

Computer System Requirements

You can use any web browser such as Microsoft® Internet Explorer or Netscape Navigator® with your SURFboard cable modem.

For Microsoft Windows computers, the Installation Assistant application automatically checks your system configuration. You can start the Installation Assistant from the Main Menu on the SURFboard Cable Modem CD-ROM.

Your SURFboard cable modem is compatible with Microsoft Windows®, Macintosh®, and UNIX® computers.

Ethernet Card

You can use the Ethernet connection with any Windows, Macintosh, or UNIX computer equipped with a 10Base-T or 10/100Base-T Ethernet card.

Windows® 95, UNIX, or Macintosh computers must use the Ethernet connection.

If you use an Ethernet card, it must be installed in your computer before you install the cable modem. If it is not installed, follow the installation instructions provided with your Ethernet card.

USB Connection

You can use the USB connection with any PC running Windows® 98, Windows® 2000, Windows Me®, or Windows XP™ that has a USB interface. The USB connection requires special USB driver software that is supplied on the SURFboard Cable Modem CD-ROM.

You can upgrade your USB drivers from our [Downloads](http://downloads.motorola.com/noflash/usb_drivers.asp) page
http://broadband.motorola.com/noflash/usb_drivers.asp.

Installation and Configuration Overview

To connect a single PC running Microsoft Windows to a SURFboard cable modem, we recommend using the Installation Assistant application.

You can start the Installation Assistant from the Main Menu on the *SURFboard Cable Modem* CD-ROM. In most cases, the Installation Assistant automatically configures your cable modem.

To install and configure your cable modem for a single PC running Microsoft Windows, you can use the Installation Assistant.

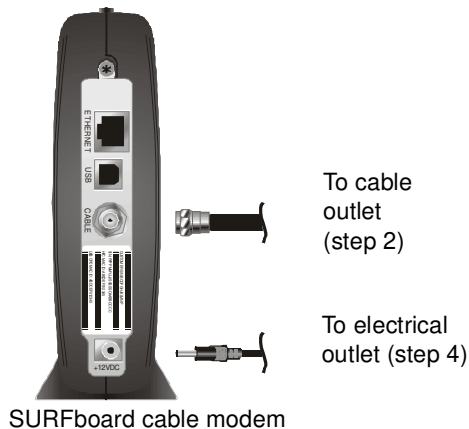
Otherwise, to install and configure your cable modem:

- 1 Install the cables as described in *one* of:
 - “Cabling and Startup for a Single User” on page 9
 - “Cabling for Multiple Users” on page 40
- 2 If you are using the **USB** port *only*, go to “Setting Up a USB Driver” on page 11. *Ethernet users can skip this step.*
- 3 Configure **TCP/IP** and verify the **IP address** for your computer following *one* of:
 - “Configuring TCP/IP” on page 22
 - Your Macintosh or UNIX user manual

▣ Cabling and Startup for a Single User

Allow 5 to 30 minutes to power up the first time because the SURFboard cable modem must find and lock on the appropriate channels for communications.

- 1 Be sure your computer is on and the cable modem is unplugged.
- 2 Connect one end of the coaxial cable to the cable outlet or splitter. Connect the other end of the coaxial cable to the CABLE connector on the cable modem. *Hand-tighten the connectors to avoid damaging them.*
- 3 Insert the *SURFboard Cable Modem* CD-ROM into your CD-ROM drive.
- 4 Plug the power cord into the +12VDC connector on the cable modem and the electrical outlet. *This turns the SURFboard cable modem on. You do not need to unplug it when not in use.*
- 5 Check that the lights on the cable modem front cycle through this sequence:
 - Power flashes during the self-test and changes to solid green when the self-test is successfully complete.
 - Receive flashes while scanning for the receive (**downstream**) channel and changes to solid green when it is connected.
 - Send flashes while scanning for the send (**upstream**) channel and changes to solid green when it is connected.
 - Online flashes while the cable modem downloads configuration data and changes to solid green when the download is complete.



Always connect coaxial cable to the wall outlet first.

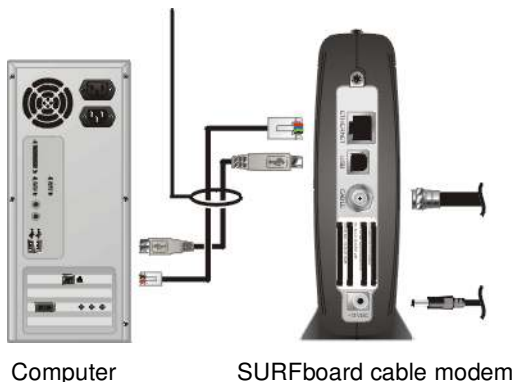
Cabling and Startup for a Single User, continued

Caution



Do not connect *both* the Ethernet and USB cables to the same computer.

Connect to *either* Ethernet or USB



- 6 Connect your computer to the cable modem using USB or Ethernet:

USB: Be sure the SURFboard Cable Modem CD-ROM is inserted in your CD-ROM drive. Connect the USB cable to the USB port on the cable modem. Connect the other end to the USB port on your computer. Then perform “[Setting Up a USB Driver](#)” on page 11.

Ethernet: Connect the provided straight-through Ethernet cable to the Ethernet connector on the cable modem. Connect the other end to the Ethernet port on your computer. *Ethernet users do not need to set up USB.*

- 7 Perform the procedures for “[Configuring TCP/IP](#)” on page 22.

Setting Up a USB Driver

Be sure the SURFboard Cable Modem CD-ROM is inserted in your CD-ROM drive before you plug in the USB cable.

The following subsections describe setting up a USB driver. Perform the appropriate procedure for your Windows version:

- [“Setting Up a USB Driver in Windows 98”](#) on page 12
- [“Setting Up a USB Driver in Windows 2000”](#) on page 16
- [“Setting Up a USB Driver in Windows Me”](#) on page 20
- [“Setting Up a USB Driver in Windows XP”](#) on page 21

When you finish setting up the USB driver, you can continue with [“Configuring TCP/IP”](#) on page 22.

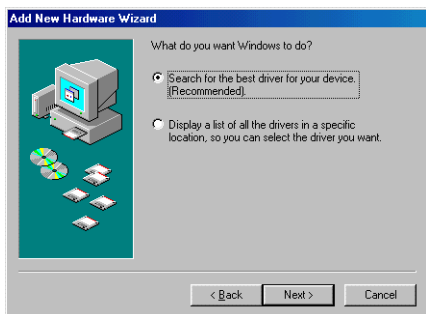
The SURFboard cable modem USB driver does not support Macintosh or UNIX computers. For those systems, you can connect through Ethernet *only*.

➤ Setting Up a USB Driver in Windows 98

Be sure the SURFboard Cable Modem CD-ROM is inserted in your CD-ROM drive before you plug in the USB cable. This CD contains the USB drivers and must be inserted and read by the PC before you connect the cable modem to the PC.

A few seconds after you complete the USB connection, the Add New Hardware Wizard window is displayed.

- 1 Click **Next**.
- 2 Be sure “Search for the best driver for your device” is selected.
- 3 Click **Next**.



Setting Up a USB Driver in Windows 98, continued



4 Be sure “CD-ROM drive” is the only box checked.

5 Click **Next**.

The message “Please wait while Windows searches for a new driver for this device” is displayed.

6 If your computer successfully locates the driver, skip to step 8.

If your computer does not locate the driver, the previous window is displayed again. Select **Specify a location** and type the location of your CD-ROM drive.

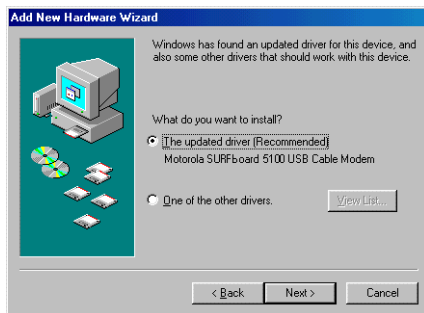
To load the driver successfully, you may need to click **Browse** to manually select the driver file from the CD-ROM. For the SB5100, select the **NetMotCM.sys** file.

Or

For the SB5120, select the **SB5120.inf** file.

7 Click **Next**.

Setting Up a USB Driver in Windows 98, continued



- 8 Select **The updated driver...** and click **Next**.

If this window is not displayed, verify that the *SURFboard Cable Modem* CD-ROM is properly inserted in the CD-ROM drive. If you still cannot find the correct driver file, click **Cancel** to cancel the installation and perform the procedure for [“Removing the USB Driver from Windows 98 or Windows Me”](#) on page 45. Then repeat this procedure.

- 9 After the window at bottom left is displayed, click **Next**.

If a window with the message *Copying Files...* displays and asks for your CD-ROM drive, type your CD-ROM drive *letter* (for example, “D:”) and click **OK**.

If an Insert Disk window similar to the one below is displayed, Windows 98 system files are needed to complete the installation. To install the files, insert your Windows 98 CD-ROM in the CD-ROM drive and click **OK**.



Although your SURFboard cable modem model number may be different than in the images in this guide, the procedure is the same.

Setting Up a USB Driver in Windows 98, continued



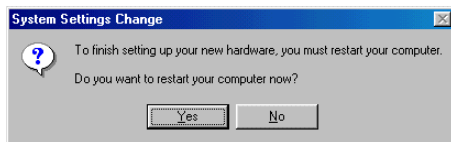
After all the necessary files are loaded, the window at upper left is displayed confirming a successful installation.

10 Click **Finish**. The window at bottom left is displayed.

11 Click **Yes** to restart your computer.

When you finish setting up the USB driver, you can continue with [“Configuring TCP/IP in Windows 95, 98, or Windows Me”](#) on page 23.

If you have difficulties setting up the USB driver, perform [“Removing the USB Driver from Windows 98 or Windows Me”](#) on page 45 and repeat this procedure. If that does not correct your problem, see the *Regulatory, Safety, Software License, and Warranty Information* card provided with your SURFboard cable modem for information about obtaining warranty service.

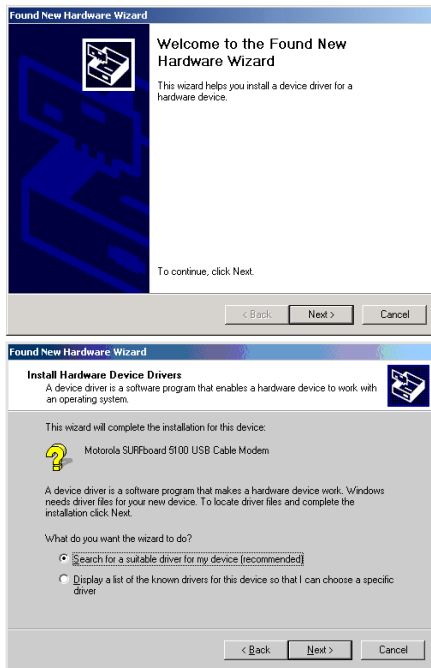


➤ Setting Up a USB Driver in Windows 2000

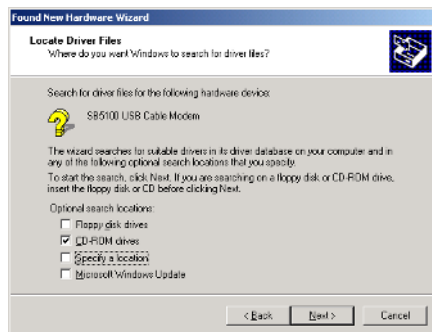
Be sure the *SURFboard Cable Modem* CD-ROM is inserted into the CD-ROM drive before you plug in the USB cable. A few seconds after you complete the USB connection, the Found New Hardware window is displayed.

- 1 Click **Next**.
- 2 Be sure “Search for a suitable driver for my device” is selected.
- 3 Click **Next**.

Although your SURFboard cable modem model number may be different than in the images in this guide, the procedure is the same.



Setting Up a USB Driver in Windows 2000, continued

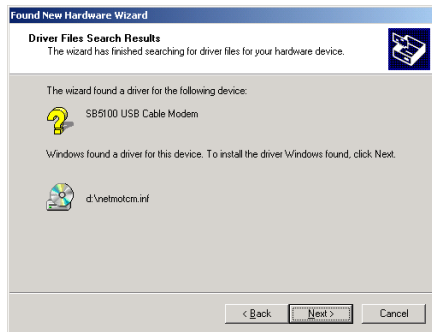


4 Be sure “CD-ROM drives” is the only box checked.

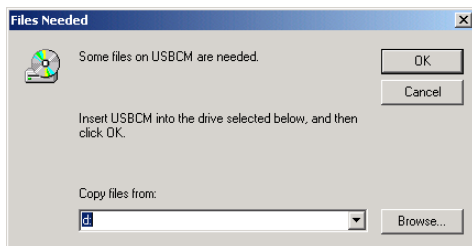
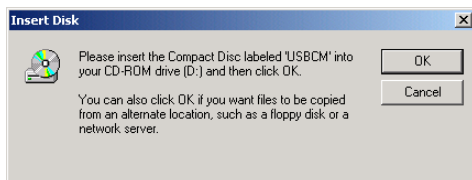
5 Click **Next**.

6 Click **Next**.

If the Insert Disk window is displayed, be sure the *SURFboard Cable Modem* CD-ROM is in the CD-ROM drive and follow steps 7 to 11. Otherwise, you can skip to step 12.



Setting Up a USB Driver in Windows 2000, continued



- 7 On the Insert Disk window, click **OK**. The Files Needed window is displayed.
- 8 For the SB5100, if necessary, select your CD-ROM drive in the “**Copy files from**” list.
Or
For the SB5120, be sure that the SB5120 CD-ROM is in the CD-ROM drive.
- 9 For the SB5100, Click **Browse**.
Or
For the SB5120, if necessary, select your CD-ROM drive in the “**Copy files from**” list and skip to step 11.
- 10 For the SB5100, double-click the **NetMotCM.sys** file in the CD-ROM root directory. The Files Needed window is displayed.
- 11 Click **OK**. The Found New Hardware Wizard window is displayed.

Setting Up a USB Driver in Windows 2000, continued

12 Click **Finish** to complete the installation.

When you finish setting up the USB driver, you can continue with “[Configuring TCP/IP in Windows 2000](#)” on page 26.

If you have any difficulties setting up the USB driver, perform “[Removing the USB Driver from Windows 2000](#)” on page 49 and repeat this procedure.



➤ **Setting Up a USB Driver in Windows Me**

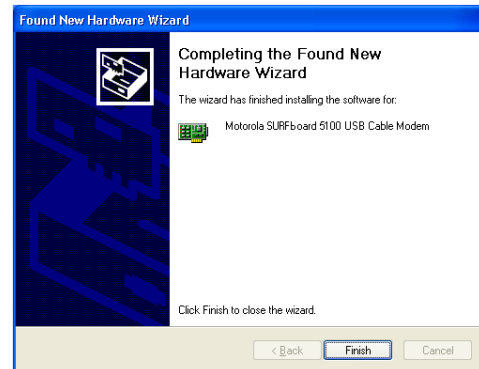
Be sure the *SURFboard Cable Modem* CD-ROM is inserted into the CD-ROM drive before you plug in the USB cable. A few seconds after you complete the USB connection, the Add New Hardware Wizard window is displayed.

- 1 Click **Next**. Windows automatically searches for the correct USB drivers and installs them. If the installation is successful, the window at bottom left is displayed.
- 2 Click **Finish** to complete the installation. Otherwise, be sure the *SURFboard Cable Modem* CD-ROM is correctly inserted in your CD-ROM drive.

When you finish setting up the USB driver, you can continue with [“Configuring TCP/IP in Windows 95, 98, or Windows Me”](#) on page 23.



Although your SURFboard cable modem model number may be different than in the images in this guide, the procedure is the same.



➤ Setting Up a USB Driver in Windows XP

Be sure the *SURFboard Cable Modem* CD-ROM is inserted into the CD-ROM drive before you plug in the USB cable. A few seconds after you complete the USB connection, the Found New Hardware Wizard window is displayed.

- 1 Be sure “Install the software automatically” is selected.
- 2 Click **Next**. Windows automatically searches for the correct USB drivers and installs them. If the installation is successful, the window at bottom left is displayed.
- 3 Click **Finish** to complete the installation. Otherwise, be sure the *SURFboard Cable Modem* CD-ROM is correctly inserted in your CD-ROM drive.

When you finish setting up the USB driver, you can continue with [“Configuring TCP/IP in Windows XP”](#) on page 30.

Although your SURFboard cable modem model number may be different than in the images in this guide, the procedure is the same.

Configuring TCP/IP

The SURFboard cable modem contains all required software. You do not need to configure the cable modem, but you must be sure that your computer is configured for [TCP/IP](#) (a protocol for communication between computers). Perform *one* of:

- [“Configuring TCP/IP in Windows 95, 98, or Windows Me”](#) on page 23
- [“Configuring TCP/IP in Windows 2000”](#) on page 26
- [“Configuring TCP/IP in Windows XP”](#) on page 30
- Follow the instructions in your Macintosh or UNIX user manual

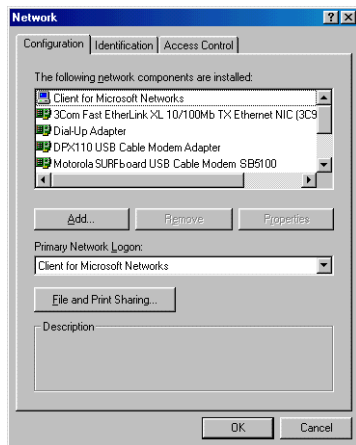
After configuring TCP/IP, perform *one* of the following to verify the [IP address](#):

- [“Verifying the IP Address in Windows 95, Windows 98, or Windows Me”](#) on page 37
- [“Verifying the IP Address in Windows 2000 or Windows XP”](#) on page 38
- Follow the instructions in your Macintosh or UNIX user manual

Your cable service provider may provide additional instructions to set up your computer.

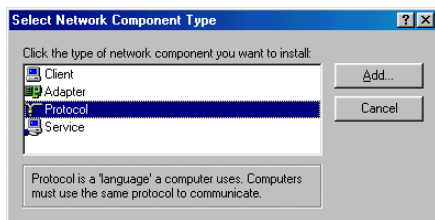
❖ Configuring TCP/IP in Windows 95, 98, or Windows Me

- 1 On the Windows Desktop, click **Start**.
- 2 Select **Settings** and then **Control Panel** from the pop-up menus.
- 3 Double-click the **Network** icon on the Control Panel window.
- 4 Select the **Configuration** tab on the Network window.
- 5 Verify that TCP/IP is installed for the adapter that will be used to connect to the SURFboard cable modem. If TCP/IP is installed, then skip to step 10. If TCP/IP is not installed for the adapter, continue with step 6.

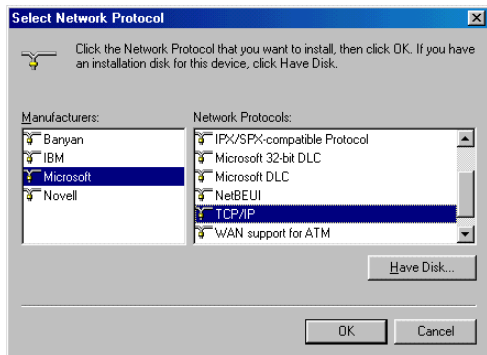


Although your SURFboard cable modem model number may be different than in the images in this guide, the procedure is the same.

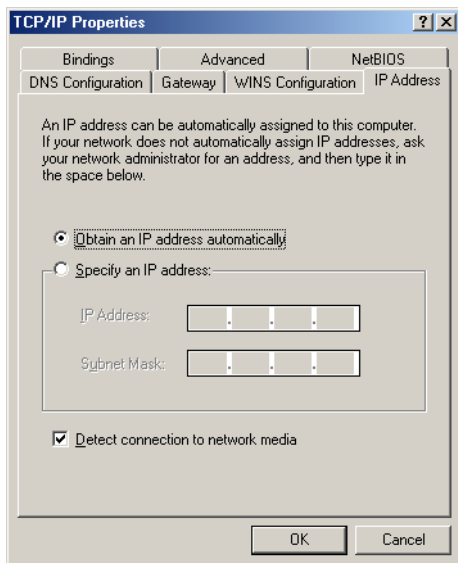
Configuring TCP/IP in Windows 95, 98, or Windows Me, continued



- 6 Select the adapter to be used for the SURFboard cable modem connection and then click **Add**.
- 7 Double-click the **Protocol** option on Select Network Component Type window.
- 8 Click **Microsoft** in the Manufacturers section and click **TCP/IP** in the Network Protocol section of Select Network Protocol window.
- 9 Click **OK**.



Configuring TCP/IP in Windows 95, 98, or Windows Me, continued

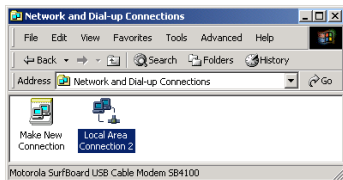


- 10 Click **TCP/IP** on the Network window. If there is more than one TCP/IP entry, choose the one for the Ethernet card or USB port connected to the cable modem.
- 11 Click **Properties**. The TCP/IP window is displayed.
- 12 Click the **IP Address** tab.
- 13 Click **Obtain an IP address automatically**.
- 14 Click **OK** to accept the TCP/IP settings.
- 15 Click **OK** to close the Network window.
- 16 Click **OK** when prompted to restart your computer and click **OK** again.

When you complete TCP/IP configuration, go to [“Verifying the IP Address in Windows 95, Windows 98, or Windows Me”](#) on page 37.

▣ Configuring TCP/IP in Windows 2000

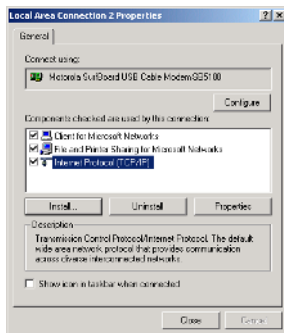
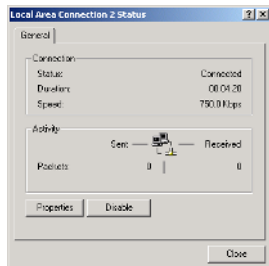
- 1 On the Windows Desktop, click **Start**.
- 2 Select **Settings** and then **Control Panel** from the pop-up menus.
- 3 Double-click the **Network and Dial-up Connections** icon on the Control Panel window.
- 4 On the Network and Dial-up Connections window, double-click **Local Area Connection number**. The value of *number* varies from system to system. The Local Area Connection *number* Status window is displayed.



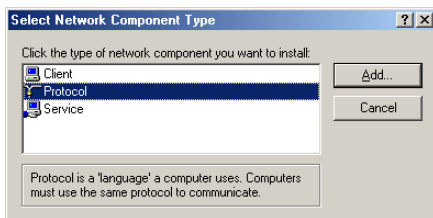
Configuring TCP/IP in Windows 2000, continued

- 5 Click **Properties**. Information similar to the lower window is displayed.
- 6 If Internet Protocol (TCP/IP) is in the list of components, TCP/IP is installed. You can skip to step 10.

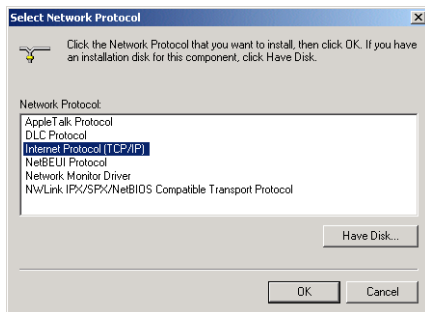
If Internet Protocol (TCP/IP) is not in the list, click **Install**. The Select Network Component Type window is displayed. Continue with step 7.



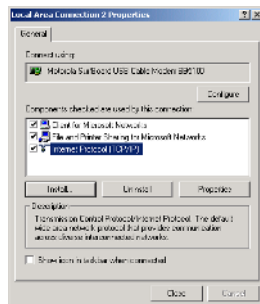
Configuring TCP/IP in Windows 2000, continued



- 7 Click **Protocol** on the Select Network Component Type window and click **Add**. The Select Network Protocol window is displayed.
- 8 Click **Internet Protocol (TCP/IP)** in the Network Protocol section on the Select Network Protocol window.
- 9 Click **OK**. The Local Area Connection *number* Properties window is re-displayed.

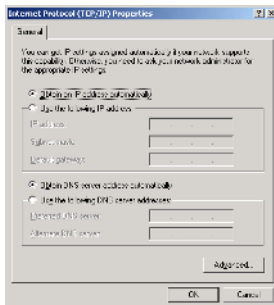


Configuring TCP/IP in Windows 2000, continued



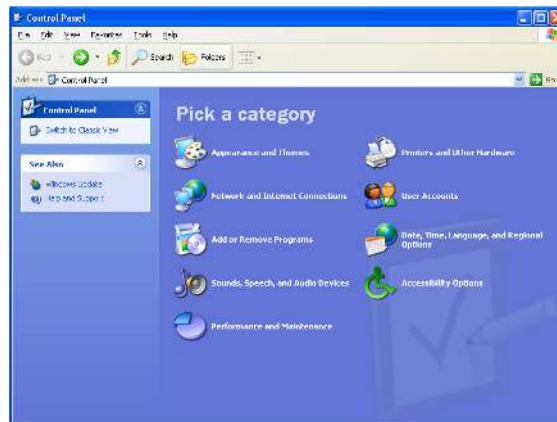
- 10 On the Local Area Connection *number* Properties window, be sure the box next to **Internet Protocol (TCP/IP)** is checked.
- 11 Click **Properties**. The Internet Protocol (TCP/IP) Properties window is displayed as shown at bottom left.
- 12 Be sure **Obtain IP address automatically** and **Obtain DNS server address automatically** are selected.
- 13 Click **OK** to accept the TCP/IP settings.
- 14 Click **OK** to close the Local Area Connection *number* Properties window.
- 15 Click **OK** when prompted to restart your computer and click **OK** again.

When you complete the TCP/IP configuration, go to [“Verifying the IP Address in Windows 2000 or Windows XP”](#) on page 38.



❖ Configuring TCP/IP in Windows XP

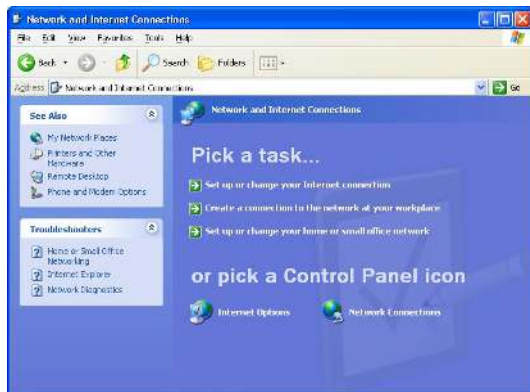
- 1 On the Windows desktop, click **Start** to display the Start window shown at left.
- 2 Click **Control Panel** to display the Control Panel window. The display varies, depending on your Windows XP view options. If the display is a Category view as shown below, continue with step 3. Otherwise, skip to step 5.



- 3 Click **Network and Internet Connections** to display the Network and Internet Connections window.

Configuring TCP/IP in Windows XP, continued

- 4 On the Network and Internet Connections Pick a task window, click **Network Connections** to display the LAN or High-speed Internet connections. Skip to step 6.



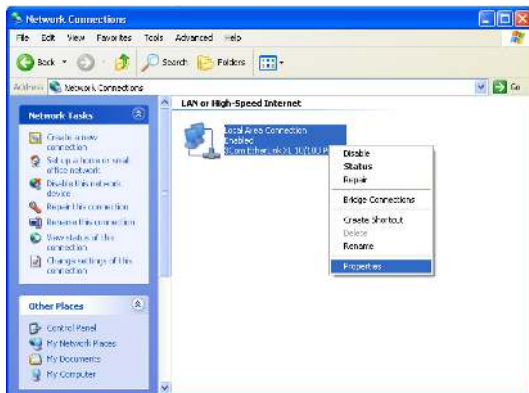
Configuring TCP/IP in Windows XP, continued



- 5 If a classic view similar to at left is displayed, click **Network Connections** to display the LAN or High-speed Internet connections.

Configuring TCP/IP in Windows XP, continued

- 6 Right-click on your network connection. If more than one connection is displayed, be sure to select the one for your network interface.
- 7 Select **Properties** from the pop-up menu to display the Local Area Connection Properties window.

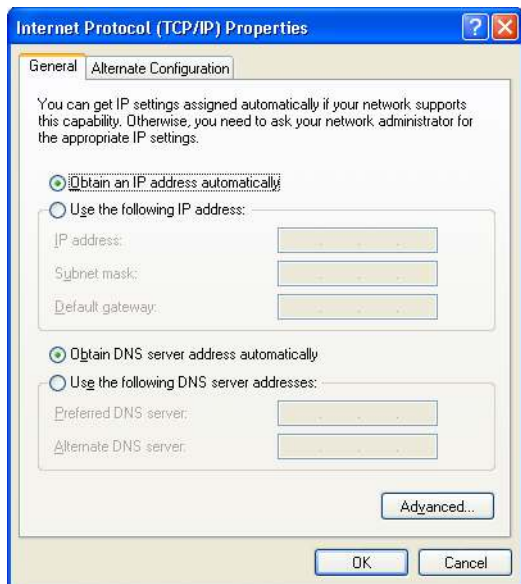


Configuring TCP/IP in Windows XP, continued



- 8 On the Local Area Connection Properties window, be sure Internet Protocol (TCP/IP) is checked. If it is not checked, check it.
- 9 Select **Internet Protocol (TCP/IP)** and click **Properties** to display the Internet Protocol (TCP/IP) Properties window.

Configuring TCP/IP in Windows XP, continued



- 10 On the Internet Protocol (TCP/IP) Properties window, verify that the settings are correct, as shown on left.
- 11 Click **OK** to close the TCP/IP Properties window.
- 12 Click **OK** to close the Local Area Connection Properties window.

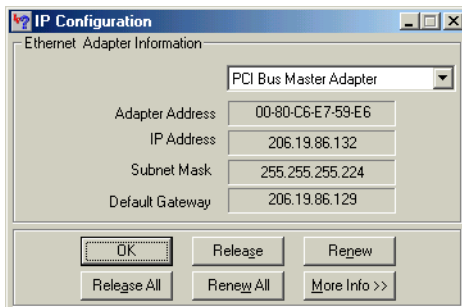
When you complete the TCP/IP configuration, go to [“Verifying the IP Address in Windows 2000 or Windows XP”](#) on page 38.

Verifying the IP Address

The following subsections describe verifying an IP Address. Perform the appropriate procedure for you Windows version:

- [“Verifying the IP Address in Windows 95, Windows 98, or Windows Me”](#) on page 37
- [“Verifying the IP Address in Windows 2000 or Windows XP”](#) on page 38

For a Macintosh or UNIX system, refer to your user guide.



The values for Adapter Address, IP Address, Subnet Mask, and Default Gateway on your PC will be different than in the image above.

Adapter Address	00-80-C6-E7-59-E6
IP Autoconfiguration Address	169.254.191.251

In Windows 98, if autoconfiguration is displayed before the IP Address, call your service provider.

❖ Verifying the IP Address in Windows 95, Windows 98, or Windows Me

To check the IP address:

- 1 On the Windows Desktop, click **Start**.
- 2 Select **Run**. The Run window is displayed.
- 3 Type **windowsipcfg.exe** and click **OK**. A window similar to the example at top left is displayed.
- 4 Select your adapter name — the Ethernet card or USB device.
- 5 Click **Renew**.
- 6 Click **OK** after the system displays an IP address.

If after performing this procedure your computer cannot access the Internet, call your cable service provider for help.

❖ Verifying the IP Address in Windows 2000 or Windows XP

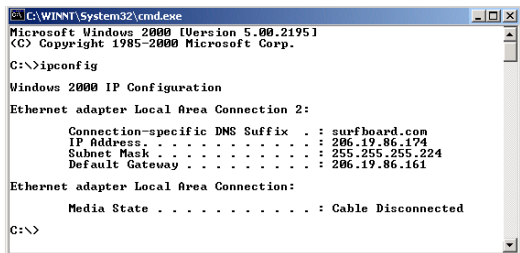
To check the IP address:

- 1 On the Windows Desktop, click **Start**.
- 2 Select **Run**. The Run window is displayed.
- 3 Type **cmd** and click **OK**. A window like the one at upper left is displayed.
- 4 Type **ipconfig** and press ENTER to display your IP configuration. A display, like the window at upper left, indicates a normal configuration.

If an Autoconfiguration IP Address is displayed as in the window at bottom left, there is an incorrect connection between your PC and the cable modem or there are cable network problems. Check:

- Your cable connections
- Whether you can see cable-TV channels on your television

After verifying your cable connections and proper cable-TV operation, you can renew your IP address.



```
C:\WINNT\System32\cmd.exe
Microsoft Windows 2000 [Version 5.00.2195]
(C) Copyright 1985-2000 Microsoft Corp.

C:\>ipconfig

Windows 2000 IP Configuration

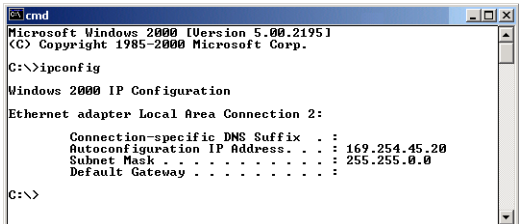
Ethernet adapter Local Area Connection 2:

    Connection-specific DNS Suffix  . : surfboard.com
    IP Address. . . . . : 206.19.86.174
    Subnet Mask . . . . . : 255.255.255.224
    Default Gateway . . . . . : 206.19.86.161

Ethernet adapter Local Area Connection:

    Media State . . . . . : Cable Disconnected

C:\>
```



```
cmd
Microsoft Windows 2000 [Version 5.00.2195]
(C) Copyright 1985-2000 Microsoft Corp.

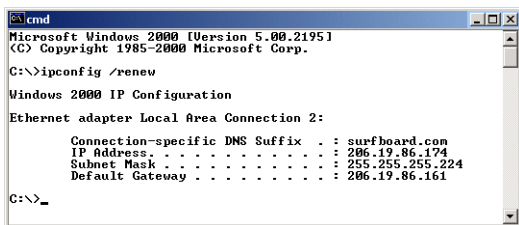
C:\>ipconfig

Windows 2000 IP Configuration

Ethernet adapter Local Area Connection 2:

    Connection-specific DNS Suffix  . : 
    Autoconfiguration IP Address. . . : 169.254.45.20
    Subnet Mask . . . . . : 255.255.0.0
    Default Gateway . . . . . : 

C:\>
```



```
cmd
Microsoft Windows 2000 [Version 5.00.2195]
(C) Copyright 1985-2000 Microsoft Corp.

C:\>ipconfig /renew

Windows 2000 IP Configuration

Ethernet adapter Local Area Connection 2:

    Connection-specific DNS Suffix  . : surfboard.com
    IP Address . . . . . : 206.19.86.174
    Subnet Mask . . . . . : 255.255.255.224
    Default Gateway . . . . . : 206.19.86.161

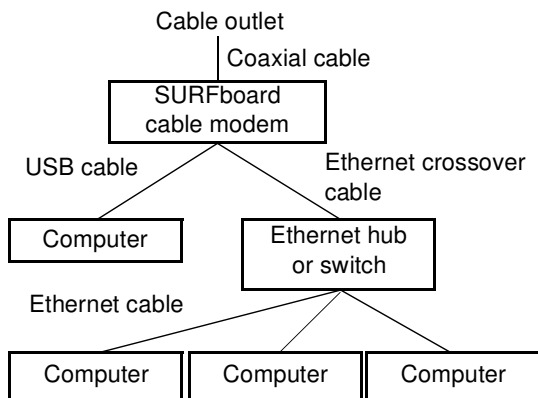
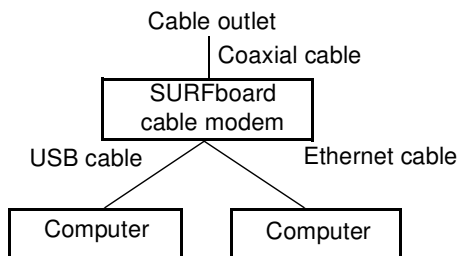
C:\>_
```

❖ Renewing Your IP Address

To renew your IP address:

- 1 Type **ipconfig /renew** and press ENTER. If a valid IP address is displayed as shown at left, Internet access should be available.
- 2 Type **exit** and press ENTER to return to Windows.

If after performing this procedure your computer cannot access the Internet, call your cable service provider for help.



▣ Cabling for Multiple Users

The SURFboard cable modem supports several multiple user configurations. Along with an optional hub or router, it can serve as an Internet gateway for up to 32 computers.

Not all service providers support multiple user service. For information about multiple user service, contact your cable service provider.

Ethernet and USB

You can connect the USB port on one computer and the Ethernet port on another computer directly to the cable modem, as shown at top left.

Caution

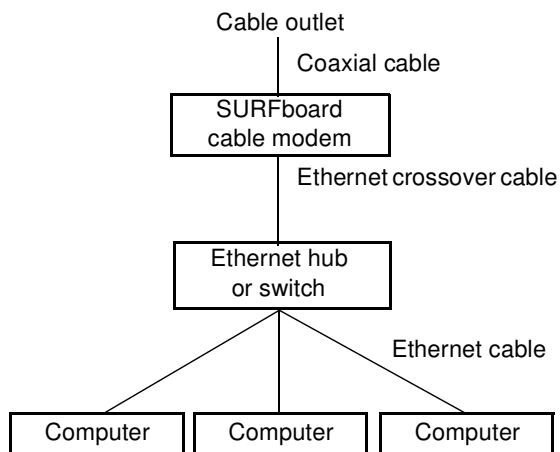


Do not connect *both* the Ethernet and USB cables to the same computer.

You can connect a single computer to the USB port and from one to 31 remaining users to an Ethernet hub, as shown at bottom left. You cannot connect more than one computer to the cable modem through the USB port.

Ethernet

You can connect up to 32 computers to an Ethernet hub connected to a SURFboard cable modem, as shown at left.



Troubleshooting

If the solutions listed here do not solve your problem, contact your cable service provider. Before calling your service provider, try unplugging and plugging in the cable modem power cord in the AC wall outlet to restart the cable modem. Restarting the cable modem may take 5 to 30 minutes.

Before calling your service provider, try pressing the reset button on the rear panel. Resetting the cable modem may take 5 to 30 minutes. Your service provider may ask for the status of the front-panel lights as described in "[Front-Panel Lights and Error Conditions](#)" on page 44.

Problem

Green POWER light is off

Possible Solutions

Check that the power cord is properly plugged into the electrical outlet and the cable modem.

Check that the electrical outlet is working.

If the Standby light is on, the Internet connection is off. Press the Standby button to reconnect to the Internet.

Problem

Cannot send or receive data

Problems related to unsuccessful USB driver installation

Possible Solutions

Check the lights on the front panel. Note the first light from top to bottom that is off. This light indicates where the error occurred as described in [“Front-Panel Lights and Error Conditions”](#) on page 44.

If all lights are off except the Standby light, the cable modem is in Standby mode. Press the Standby button to reconnect your Internet service.

If you have cable TV, check that your TV is working and the picture is clear. If you cannot receive your regular TV channels, your data service will not function.

Check the coaxial cable at the cable modem and wall outlet. Hand-tighten if necessary.

Check the IP address. Follow the steps in [“Verifying the IP Address in Windows 95, Windows 98, or Windows Me”](#) on page 37 or [“Verifying the IP Address in Windows 2000 or Windows XP”](#) on page 38. Call your cable service provider if you need an IP address.

Check that the USB or Ethernet cable is properly connected to the cable modem and your computer.

Remove the USB driver. Follow the instructions in *one* of:

- [“Removing the USB Driver from Windows 98 or Windows Me”](#) on page 45
- [“Removing the USB Driver from Windows 2000”](#) on page 49
- [“Removing the USB Driver from Windows XP”](#) on page 54

Front-Panel Lights and Error Conditions

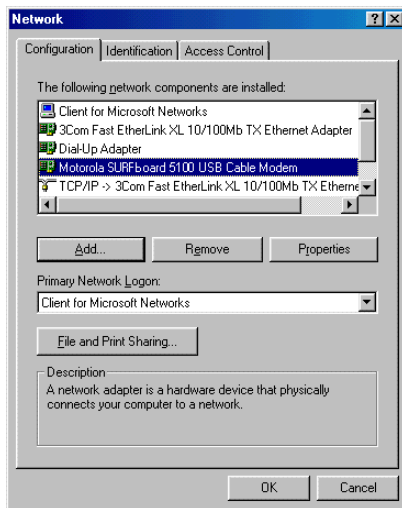
Light	Turns Off During Startup If	Turns Off During Normal Operation If
Receive	The receive channel cannot be acquired	The receive channel is lost
Send	The send channel cannot be acquired	The send channel is lost
Online	IP registration is unsuccessful	The IP registration is lost
Power	The cable modem is not properly plugged into the power outlet	The cable modem is unplugged or is in standby mode. Press the Standby button

For more information about the lights, see "[Top and Front Panel](#)" on page 2.

❖ Removing the USB Driver from Windows 98 or Windows Me

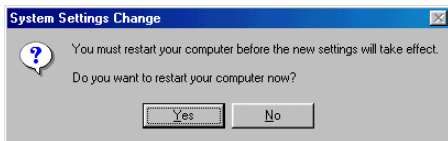
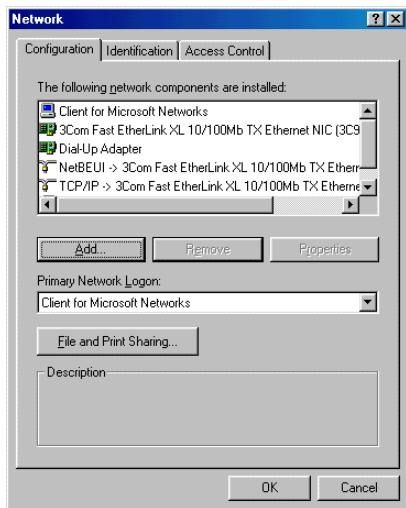
- 1 On your Windows Desktop, right-click the **Network Neighborhood** icon for Windows 98 or **My Network Places** for Windows Me and then select **Properties**. The Network window is displayed.
- 2 Click the **Motorola SURFboard USB Cable Modem**.

Although your SURFboard cable modem model number may be different than in the images in this guide, the procedure is the same.



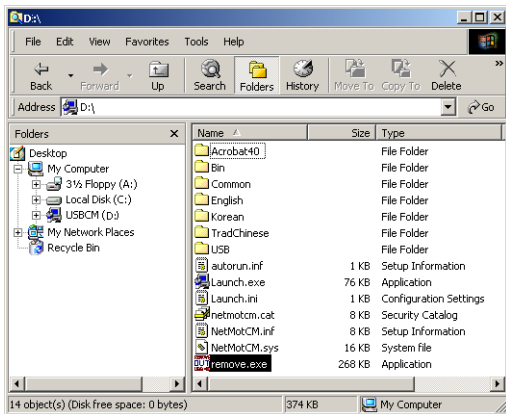
Removing the USB Driver from Windows 98 or Windows Me, continued

- 3 Click **Remove**. The Network window no longer displays Motorola SURFboard USB Cable Modem in the list.
- 4 Click **OK**. The System Settings Change window is displayed.
- 5 *Disconnect the USB cable from your PC or cable modem.*
- 6 Click **Yes** to restart your computer.



Removing the USB Driver from Windows 98 or Windows Me, continued

- 7 Insert the *SURFboard Cable Modem* CD-ROM in the CD-ROM drive. After a short time, a window with language choices is displayed.
- 8 Press the **Esc** key on the keyboard to exit the start-up screens.
- 9 To start Windows Explorer, click **Start** and select **Run**.
- 10 In the Run window, type **explorer** and click **OK**. The Exploring window is displayed.
- 11 Select your CD-ROM drive (D: in the image at left).
- 12 Double-click **remove** or **remove.exe** to run the Remove utility from the *SURFboard Cable Modem* CD-ROM. The SURFboard Cable Modem USB Driver Removal window is displayed.



Your Windows Explorer may appear slightly different than in the image on this page. There are slight variations between Windows versions and you can configure Windows Explorer as you like.

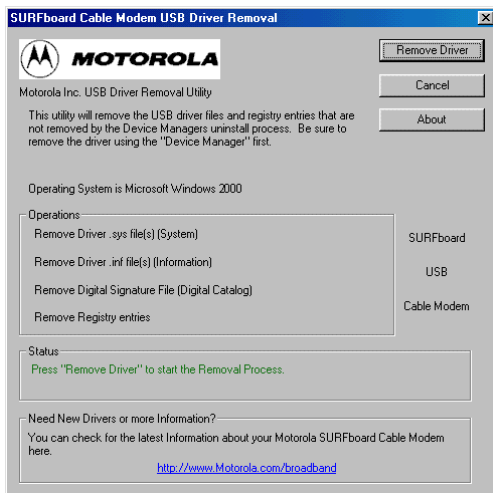
Removing the USB Driver from Windows 98 or Windows Me, continued

13 Click **Remove Driver** to remove the USB driver.

After you remove the USB driver, re-install the USB driver on your computer:

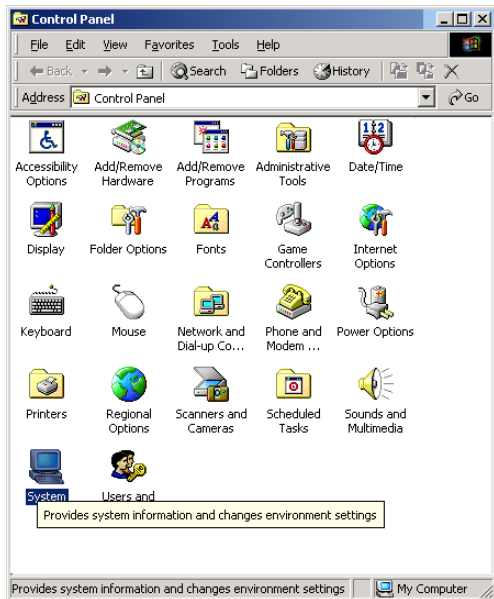
- “Setting Up a USB Driver in Windows 98” on page 12
- “Setting Up a USB Driver in Windows Me” on page 20

If you continue to have problems, contact your cable service provider.



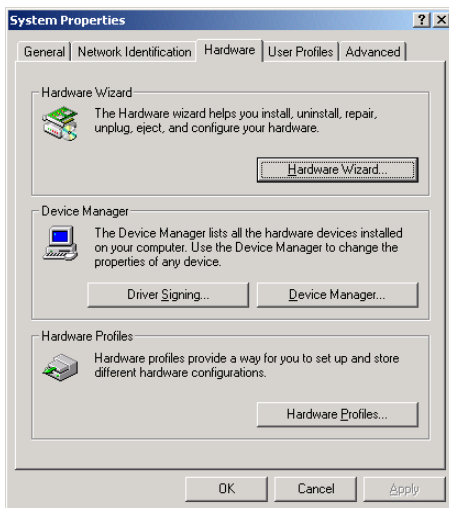
❖ Removing the USB Driver from Windows 2000

- 1 On your Windows desktop, click **Start**.
- 2 Click **Settings**.
- 3 Click **Control Panel** to display the Control Panel window.
- 4 Double-click **System** to display the System Properties window.

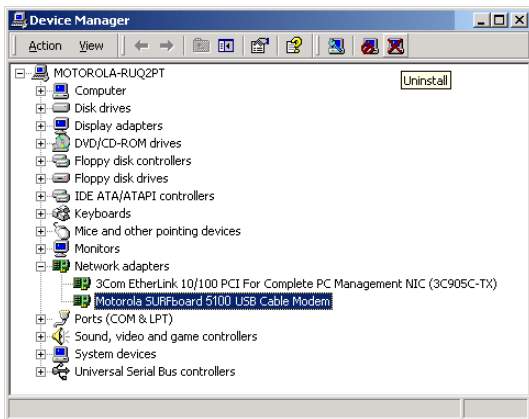


Removing the USB Driver from Windows 2000, continued

- 5 On the System Properties window, click the **Hardware** tab.
- 6 Click the **Device Manager** button to display the Device Manager window:



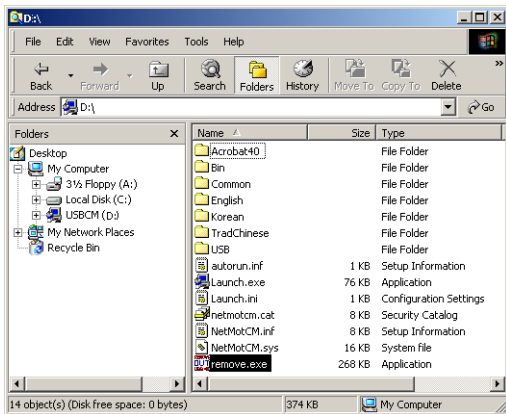
Removing the USB Driver from Windows 2000, continued



- 7 On the Device Manager window, double-click **Network Adapters**.
- 8 Click the **Motorola SURFboard USB Cable Modem**. The Uninstall icon is displayed on the window near the top.
- 9 Click the **Uninstall** icon.
- 10 Close the Device Manager window.
- 11 Close the Control Panel window.

Although your SURFboard cable modem model number may be different than in the images in this guide, the procedure is the same.

Removing the USB Driver from Windows 2000, continued



- 12 Insert the *SURFboard Cable Modem* CD-ROM in the CD-ROM drive. After a short time, a window with language choices is displayed.
- 13 Press the **Esc** key on the keyboard to exit the start-up screens.
- 14 To start Windows Explorer, click **Start** and select **Run**.
- 15 In the Run window, type **explorer** and click **OK**.
- 16 Double-click **My Computer**.
- 17 Double-click the **Motorola** CD icon (D: in the image).
- 18 Double-click **remove** or **remove.exe** to run the Remove utility from the *SURFboard Cable Modem* CD-ROM. The SURFboard Cable Modem USB Driver Removal window is displayed.

Your Windows Explorer may appear slightly different than in the image on this page. There are slight variations between Windows versions and you can configure Windows Explorer as you like.

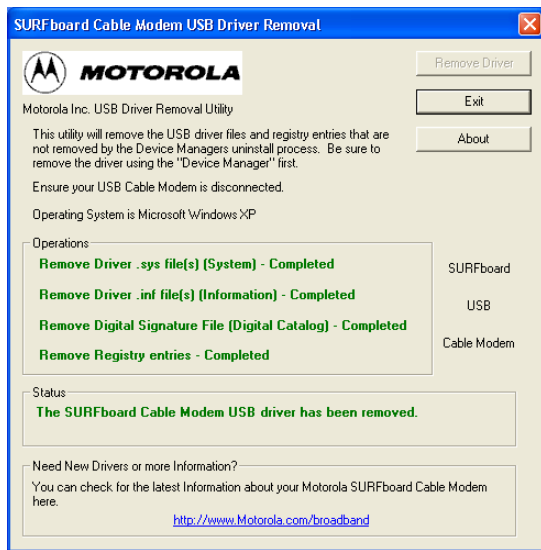
Removing the USB Driver from Windows 2000, continued

19 The window on the left is displayed. *Be sure the USB cable is disconnected.*

20 Click **Remove Driver**.

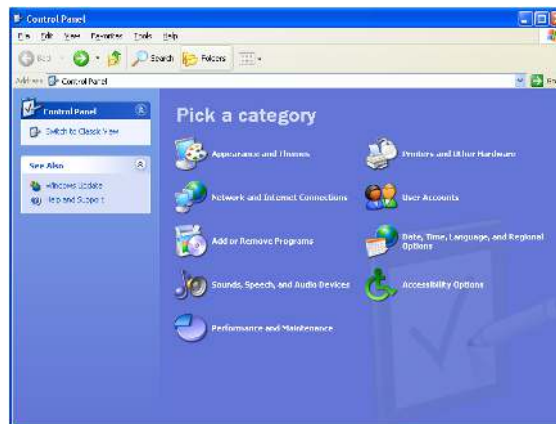
Informational messages similar to the ones shown at left are displayed on the SURFboard Cable Modem USB Driver Removal window.

After you remove the USB driver, re-install the USB driver following “[Setting Up a USB Driver in Windows 2000](#)” on page 16. If you continue to have problems, contact your cable service provider.



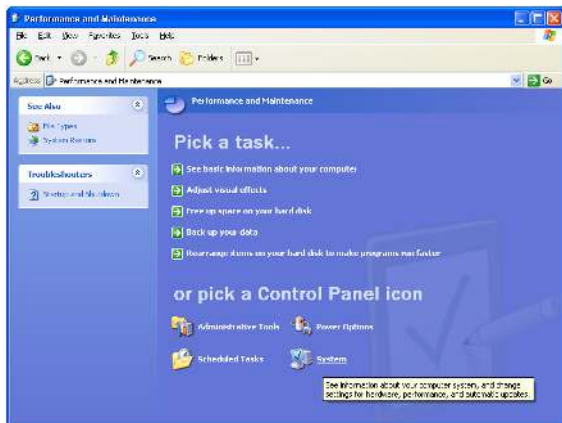
➤ Removing the USB Driver from Windows XP

- 1 On the Windows desktop, click **Start** to display the Start window shown at left.
- 2 Click **Control Panel** to display the Control Panel window. The display varies, depending on your Windows XP view options.
- 3 If a Category view similar to below is displayed, click **Performance and Maintenance**. Otherwise, skip to step 5.



Removing the USB Driver from Windows XP, continued

- 4 On the Performance and Maintenance window, click **System** to display the System Properties window. Skip to step 6.



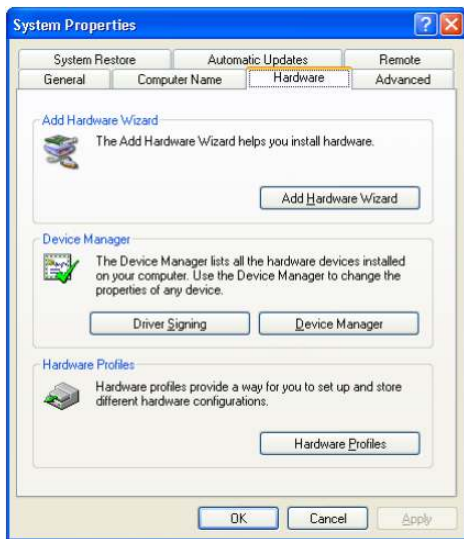
Removing the USB Driver from Windows XP, continued



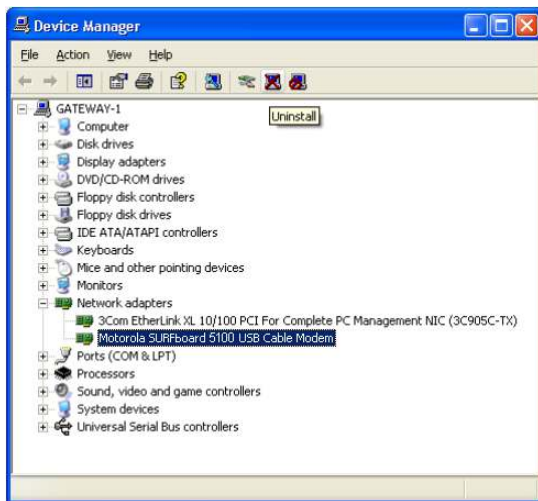
- 5 If a classic view similar to at left is displayed, click System to display the System Properties window.

Removing the USB Driver from Windows XP, continued

- 6 On the System Properties window, click the **Hardware** tab.
- 7 Double-click the **Device Manager** button to display the Device Manager window.



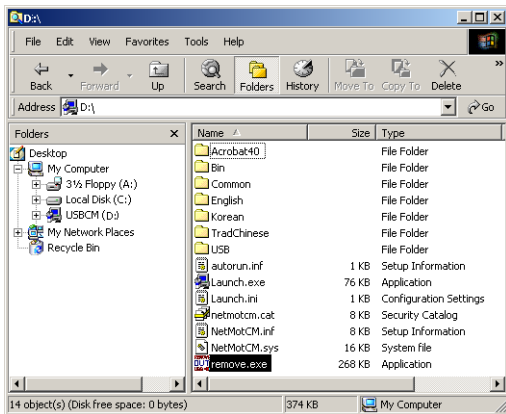
Removing the USB Driver from Windows XP, continued



- 8 On the Device Manager window, double-click **Network adapters**.
- 9 Click the **Motorola SURFboard USB Cable Modem**. The Uninstall icon is displayed on the window near the top.
- 10 Click the **Uninstall** icon.
- 11 Close the Device Manager window.
- 12 Close the Control Panel window.

Although your SURFboard cable modem model number may be different than in the images in this guide, the procedure is the same.

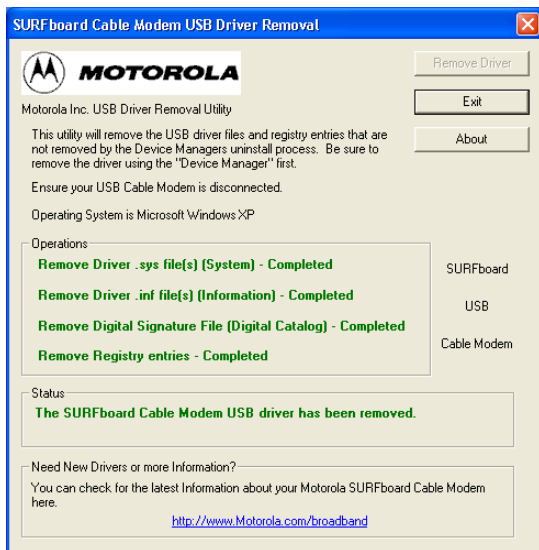
Removing the USB Driver from Windows XP, continued



- 13 Insert the *SURFboard Cable Modem* CD-ROM in the CD-ROM drive. After a short time, a window with language choices is displayed.
- 14 Press the **Esc** key on the keyboard to exit the start-up screens.
- 15 To start Windows Explorer, click **Start** and select **Run**.
- 16 In the Run window, type **explorer** and click **OK**.
- 17 Double-click **My Computer**.
- 18 Double-click the **Motorola** CD icon (D: in the image).
- 19 Double-click **remove** or **remove.exe** to run the Remove utility from the *SURFboard Cable Modem* CD-ROM. The SURFboard Cable Modem USB Driver Removal window is displayed.

Your Windows Explorer may appear slightly different than in the image on this page. There are slight variations between Windows versions and you can configure Windows Explorer as you like.

Removing the USB Driver from Windows XP, continued



20 The window on the left is displayed. *Be sure the USB cable is disconnected.*

21 Click **Remove Driver**.

Informational messages similar to the ones shown at left are displayed on the SURFboard Cable Modem USB Driver Removal window.

After you remove the USB driver, re-install the USB driver following “[Setting Up a USB Driver in Windows XP](#)” on page 21. If you continue to have problems, contact your cable service provider.

Contact Us

For information about customer service, technical support, or warranty claims, see the *Regulatory, Safety, Software License, and Warranty Information* card provided with your SURFboard cable modem.

In the United States and Canada, if you need assistance while working with the SURFboard cable modem and related equipment supplied by Motorola:

If you rent or lease your SURFboard cable modem Contact your cable service provider.

If you own your SURFboard cable modem Call **1-877-466-8646** for technical and warranty support. Support is available 24 hours a day, seven days a week.

For answers to typical questions, see "[Frequently Asked Questions](#)" on page 62.

For information about Motorola consumer cable products, education, and support, visit broadband.motorola.com/.

Frequently Asked Questions

Here are answers to questions our customers frequently ask.

Q What is high-speed cable Internet access?

A Cable Internet access uses cable television wires instead of telephone lines to connect to the Internet. It is extremely fast and affordable and does not tie up telephone lines for incoming or outgoing calls and faxes.

Q How fast are cable modems?

A Cable modems offer Internet access at speeds up to 100 times faster than a traditional phone modem. You can experience speeds of over 1,000 Kbps. Due to network condition such as traffic volume and the speed of the sites you visit, actual speed may vary. Many network and other factors can affect download speeds.

Q Can I still watch cable TV while using my cable modem?

A Yes, your cable TV line can carry the TV signal while you send and receive information on the Internet.

Q What are CableLabs Certified, DOCSIS and Euro-DOCSIS?

A CableLabs® Certified, [DOCSIS](#), and Euro-DOCSIS are the industry standards for high-speed data distribution over cable television system networks. They are intended to ensure that all compliant cable modems interface with all compliant cable systems. Your Motorola SURFboard cable modem is DOCSIS or Euro-DOCSIS certified.

Q If I have a cable modem, can I still use my old 28.8 Kbps or 56 Kbps modem?

A Yes! Although once you've experienced the speed of cable Internet access, you'll never again want to wait for traditional dial-up services.

Q I have more than one computer. Do I need more than one SURFboard cable modem?

A No, not if your computers are connected on a network. The SURFboard cable modem supports current Internet connection sharing technologies to enable you to connect up to 32 PCs to the Internet using a single cable modem.

Q Do I need to change my Internet service provider (ISP)?

A Currently, most Internet service providers do not provide cable Internet access. Contact your cable company for your specific information.

Q Do I need to subscribe to cable TV to get cable Internet access?

A No, but you will need to subscribe to cable Internet service. Some systems require that you subscribe to basic service before you can get Internet access and/or offer a discount when you use your own cable modem. Check with your local cable company for specific information.

Q What type of technical support is available?

A For questions about your Internet service, connection, or cable modem, contact your cable service provider.

Q What do I do if my SURFboard cable modem stops working?

A "[Troubleshooting](#)" on page 42 provides tips to diagnose problems and simple solutions. If you continue to have problems, contact your cable service provider or Motorola as described in "[Contact Us](#)" on page 61.

Glossary

coaxial cable (coax)	A type of wire consisting of a center wire surrounded by insulation and a grounded shield of braided wire. The shield minimizes electrical and radio frequency interference.
DOCSIS	The CableLabs Data-Over-Cable Service Interface Specification defines interface standards for cable modems and supporting equipment.
download	To copy a file from one computer to another. You can use the Internet to download files from a server to your home PC. A DOCSIS cable modem downloads its configuration from a server during start-up.
downstream	In a cable data network, downstream describes the direction of data received by your computer from the Internet.
Ethernet	The most widely used type of local area network (LAN). The most commonly installed Ethernet networks are called 10Base-T. 10Base-T provides transmission speeds up to 10 megabits per second (Mbps), usually over twisted-pair wire. Fast Ethernet (100Base-T) provides transmission speeds up to 100 Mbps.
expansion slot	An opening in a computer where a circuit board can be inserted to add new capabilities.
F-type connector	A connector used to connect coaxial cable to equipment.
IP address	An Internet Protocol address is an identifier for a computer or device on a TCP/IP network. Networks using the TCP/IP protocol route messages based on the destination IP address. Your cable service provider assigns your cable modem an IP address to provide a continuous Internet connection.

MAC address	The Media Access Control Address uniquely identifies each device that can be connected to an Ethernet network. It is permanently written to read-only memory (ROM) at the factory and printed on the rear panel of your SURFboard cable modem. You need to provide the MAC address to your cable service provider.
MHz	Mega Hertz. A measure of radio frequency - millions of cycles per second. One MHz means one million cycles per second.
RJ-45	The most common type of connector for Ethernet networks.
splitter	A splitter is a device that divides the signal power from an input cable equally between two or more signals, each carrying a selected frequency range.
TCP/IP	Transmission Control Protocol/Internet Protocol is a set of protocols that provides standards and rules for communication between networks.
upstream	In a cable data network, upstream describes the direction of data sent from your computer to the Internet.
USB	Universal Serial Bus is a computer interface for add-on devices such as printers, scanners, and cable modems. When you connect your SURFboard cable modem to the USB port, Windows 98 and later versions automatically recognize the cable modem.

Software License

SURFboard Cable Modems

Motorola, Inc., Broadband Communications Sector (“Motorola”)
101 Tournament Drive
Horsham, PA 19044

IMPORTANT: PLEASE READ THIS SOFTWARE LICENSE (“LICENSE”) CAREFULLY BEFORE YOU INSTALL, DOWNLOAD OR USE ANY APPLICATION SOFTWARE, USB DRIVER SOFTWARE, FIRMWARE AND RELATED DOCUMENTATION (“SOFTWARE”) PROVIDED WITH MOTOROLA’S CABLE DATA PRODUCT (THE “CABLE DATA PRODUCT”). BY USING THE CABLE DATA PRODUCT AND/OR INSTALLING, DOWNLOADING OR USING ANY OF THE SOFTWARE, YOU INDICATE YOUR ACCEPTANCE OF EACH OF THE TERMS OF THIS LICENSE. UPON ACCEPTANCE, THIS LICENSE WILL BE A LEGALLY BINDING AGREEMENT BETWEEN YOU AND MOTOROLA. THE TERMS OF THIS LICENSE APPLY TO YOU AND TO ANY SUBSEQUENT USER OF THIS SOFTWARE.

IF YOU DO NOT AGREE TO ALL OF THE TERMS OF THIS LICENSE (I) DO NOT INSTALL OR USE THE SOFTWARE AND (II) RETURN THE CABLE DATA PRODUCT AND THE SOFTWARE (COLLECTIVELY, “PRODUCT”), INCLUDING ALL COMPONENTS, DOCUMENTATION AND ANY OTHER MATERIALS PROVIDED WITH THE PRODUCT, TO YOUR POINT OF PURCHASE OR SERVICE PROVIDER, AS THE CASE MAY BE, FOR A FULL REFUND. BY INSTALLING OR USING THE SOFTWARE, YOU AGREE TO BE BOUND BY THE PROVISIONS OF THIS LICENSE AGREEMENT.

The Software includes associated media, any printed materials, and any “on-line” or electronic documentation. Software provided by third parties may be subject to separate end-user license agreements from the manufacturers of such Software.

The Software is never sold. Motorola licenses the Software to the original customer and to any subsequent licensee for personal use only on the terms of this License. Motorola and its 3rd party licensors retain the ownership of the Software.

You may:

USE the Software only in connection with the operation of the Product.

TRANSFER the Software (including all component parts and printed materials) permanently to another person, but only if the person agrees to accept all of the terms of this License. If you transfer the Software, you must at the same time transfer the Product and all copies of the Software (if applicable) to the same person or destroy any copies not transferred.

TERMINATE this License by destroying the original and all copies of the Software (if applicable) in whatever form.

You may not:



(1) Loan, distribute, rent, lease, give, sublicense or otherwise transfer the Software, in whole or in part, to any other person, except as permitted under the TRANSFER paragraph above. (2) Copy or translate the User Guide included with the Software, other than for personal use. (3) Copy, alter, translate, decompile, disassemble or reverse engineer the Software, including but not limited to, modifying the Software to make it operate on non-compatible hardware. (4) Remove, alter or cause not to be displayed, any copyright notices or startup message contained in the Software programs or documentation. (5) Export the Software or the Product components in violation of any United States export laws.

The Product is not designed or intended for use in on-line control of aircraft, air traffic, aircraft navigation or aircraft communications; or in design, construction, operation or maintenance of any nuclear facility. MOTOROLA AND ITS 3RD PARTY LICENSORS DISCLAIM ANY EXPRESS OR IMPLIED WARRANTY OF FITNESS FOR SUCH USES. YOU REPRESENT AND WARRANT THAT YOU SHALL NOT USE THE PRODUCT FOR SUCH PURPOSES.

Title to this Software, including the ownership of all copyrights, mask work rights, patents, trademarks and all other intellectual property rights subsisting in the foregoing, and all adaptations to and modifications of the foregoing shall at all times remain with Motorola and its 3rd party licensors. Motorola retains all rights not expressly licensed under this License. The Software, including any images, graphics, photographs, animation, video, audio, music and text incorporated therein is owned by Motorola or its 3rd party licensors and is protected by United States copyright laws and international treaty provisions. Except as otherwise expressly provided in this License, the copying, reproduction, distribution or preparation of derivative works of the Software, any portion of the Product or the documentation is strictly prohibited by such laws and treaty provisions. Nothing in this License constitutes a waiver of Motorola's rights under United States copyright law.

This License and your rights regarding any matter it addresses are governed by the laws of the Commonwealth of Pennsylvania, without reference to conflict of laws principles. THIS LICENSE SHALL TERMINATE AUTOMATICALLY if you fail to comply with the terms of this License.

Motorola is not responsible for any third party software provided as a bundled application, or otherwise, with the Software.

U.S. GOVERNMENT RESTRICTED RIGHTS

The Product and documentation is provided with RESTRICTED RIGHTS. The use, duplication or disclosure by the Government is subject to restrictions as set forth in subdivision (c)(1)(ii) of The Rights in Technical Data and Computer Software clause at 52.227-7013. The contractor/manufacturer is Motorola, Inc., Broadband Communications Sector, 101 Tournament Drive, Horsham, PA 19044.



Home



Print



Exit

Visit our website at:
www.motorola.com



506538-001
7/03
MGBI