



cnMatrix

Ethernet Switching Portfolio Overview

John Mead - December 2018

Purpose Built for Target Deployment Use Cases



2018

Enterprise Indoor Access Switch

- 4 Models Available
 - 8 & 24 1GE Access ports
 - PoE+ and nonPoE
- 24 Port – 4 SFP+(10GE) Uplinks
- 8 Port – 2 SFP(1GE) Uplinks
- USB & RJ45 console port
- OOB management ports



2019

WISP Tower

- 8, 16, and 24 port models
- AC & DC versions
- Integrated Cambium Sync
- High and Low PoE budget options
- Intelligent PoE
 - Active and Passive PoE
- Extended Temperature Range



2019

Video Surveillance & Smart City Deployments

- Provides connectivity for
 - SM, Outdoor AP
 - Video cameras
 - etc
- IP67 - Attaches directly to pole
- AC powered
- 4 1GE ports
- PoE+ & 30V Passive



cnMatrix EX 2K

cnMatrix – Enterprise Switches (EX 2K) – Product overview

- cnMatrix | EX2028-P
- cnMatrix | EX2028
- cnMatrix | EX2010-P
- cnMatrix | EX2010

Understanding the Model Name

EX ABCDY-P



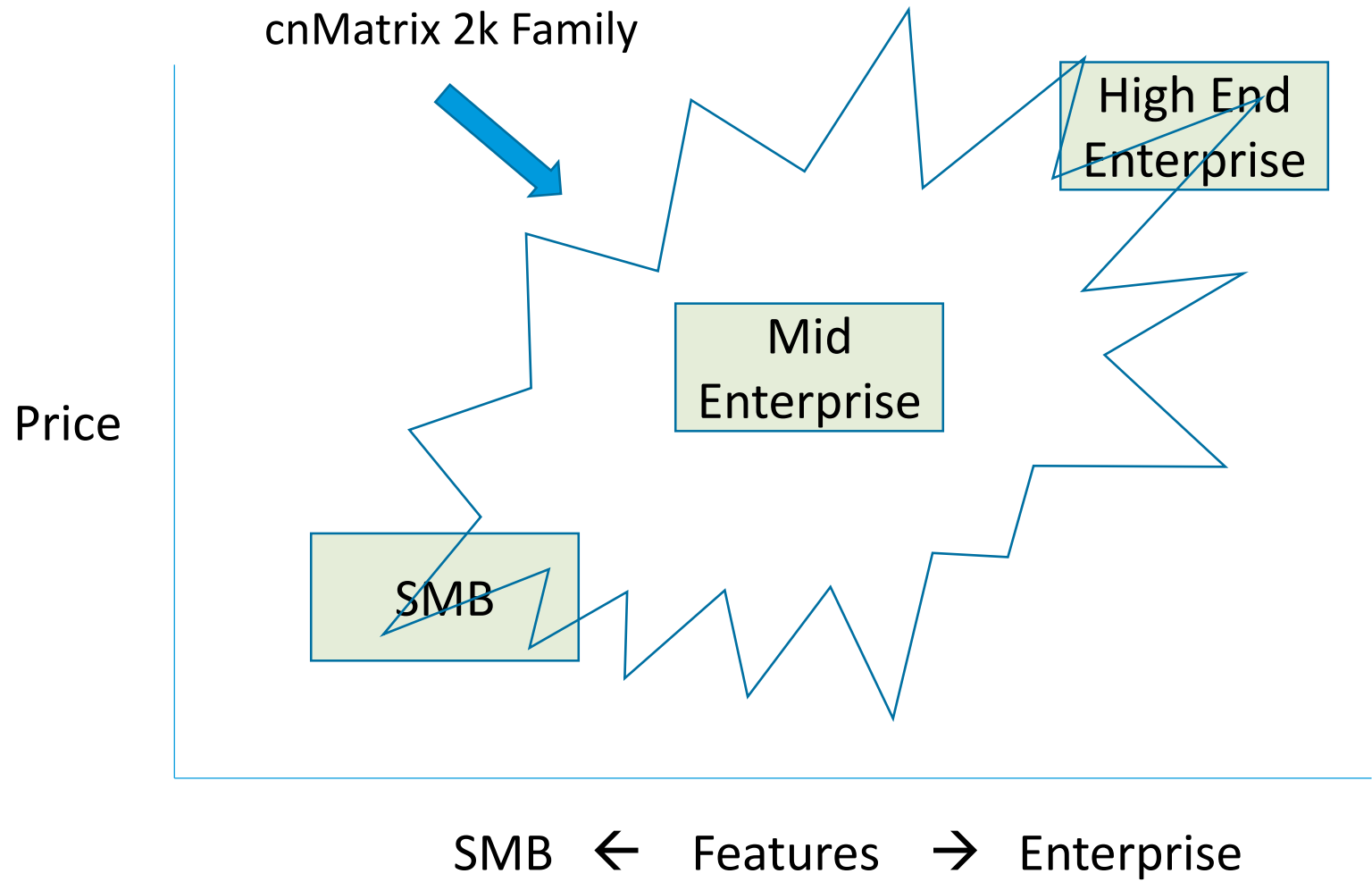
- EX – Enterprise Switch
- A – Market Segment
- B – Generation of switch
- CD - # of physical ports
- Y – Port type identifier
- '-P' – PoE capable

Examples

- EX 2028 – 24x1G + 4xSFP+
- EX2010 – 8x1G + 2xSFP
- EX 2052 – 48x1G + 4xSFP+
- EX2022M – 4x2.5G + 16x1G + 2xSFP+
- EX3028 – High End Enterprise
- TX2028 – WISP switch
- VX2004 – 4x1GE Outdoor switch



Enterprise Access Switching Market – \$8 Billion



cnMatrix – Enterprise Switches (EX 2K) – HW Overview

- HW Overview
 - Cambium designed switch - NOT an OEM switch
 - Silicon based Switching Solution
 - Dedicated HW data plane- L2 & L3 line rate processing
 - Rich L2 & L3 functionality - Extensive QoS, ACL, & Filtering
 - 4 Models Available
 - 8 Port & 24 port models with and without PoE+
 - 24 Port – 4 SFP+(10GE) Uplinks
 - 8 Port – 2 SFP(1GE) Uplinks
 - USB, OOB/MGMT, & RJ45 console port
 - Fan-less: All models except the 24 port PoE SKU



cnMatrix – Cambium Differentiation

**Cambium
Differentiation**

Cloud Managed - cnMaestro				
On Boarding	Zero Touch Initial Config	Monitoring	Configuration	Trouble Shooting
Intelligent Edge				
Policy Based Zero Touch Config		Enhanced Security	Wireless Aware	

**Fundamental
Switching
Components**

Feature Rich			
L2 Switching	L3 Switching	Management	Security
Ease of Use			
Easy to Deploy	Easy to Configure	Easy to Maintain	Easy to Trouble-Shoot
Affordable Quality			
Dependable	Reliable	Robust	Competitively Priced



Zero Touch Experience
Ease of Use

A background image showing a network visualization with a grid of blue nodes and connecting lines, creating a perspective effect that recedes into the distance.

cnMatrix

cnMatrix – A True Zero Touch Experience

Zero Touch Automating Configuration

Examples

- Static Vlans
- Uplink Ports
- Link Aggregation
- IP address
- Static Routes
- QoS, ACLs
- Radius Server
- 802.1x
- etc

**Configuration
for Initial
Deployment**

**Configuration
required for
ongoing
Network
changes**

Examples

- Connecting APs
- Connecting Cameras
- Connecting Printers
- Connecting IoT devices
- Removing devices
- Moving devices

**Solution:
cnMatrix**

**Solution:
Policy Based
Automation**

cnMatrix – Policy Based Automation

- Automates ‘Adds’, ‘Moves’, and ‘Changes’
- Eliminates Error prone manual configuration
- Every Port is treated equally
- Enhances Security by auto segmenting devices
- Little or No IT needed
- Reduce expenses required to deploy and manage
- Simplifies and reduces trouble shooting

Example: Required Switch Configuration when connecting an AP

Example: Needed Switch Configuration - VLANs, 40, 50, 60: PVID 40: port 5 – Hybrid Mode

```
cnMatrix(config)# interface gigabitethernet 0/5
cnMatrix(config-if)# switchport mode hybrid
cnMatrix(config-if)# switchport acceptable-frame-type all
cnMatrix(config-vlan)# exit
cnMatrix(config)# vlan 50
cnMatrix(config-vlan)# port add gigabitethernet 0/5
cnMatrix(config-vlan)# exit
cnMatrix(config)# auto-attach policy E430 match LLDP-ANY 430 set vlan 40,50,60 pvid 40
cnMatrix(config)# vlan 60
cnMatrix(config-vlan)#port add gigabitethernet 0/5
cnMatrix(config-vlan)#exit
cnMatrix(config)# vlan 40
cnMatrix(config-vlan)# port add gigabitethernet 0/5
cnMatrix(config-vlan)#exit
cnMatrix(config)# interface gigabitethernet 0/5
cnMatrix(config-if)# switchport pvid 40
cnMatrix(config-if)# end
```

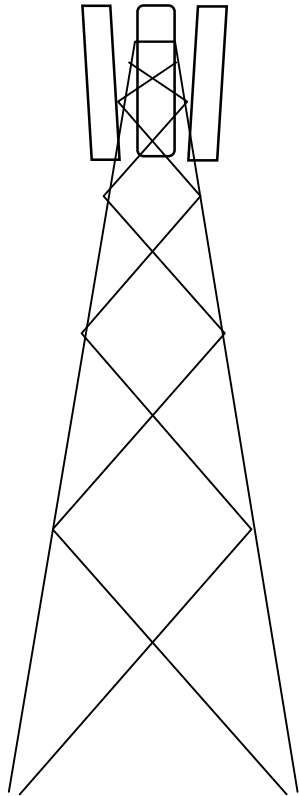
Deployment Use Cases

cnMatrix Overview

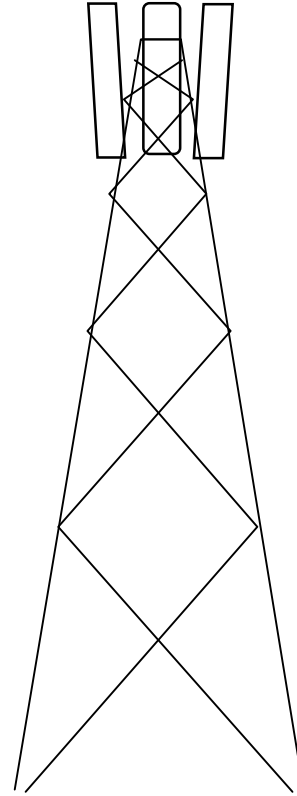


cnMatrix

cnMatrix – WISP Deployments



ePMP WISP Tower



WISP Tower
CMM5 + cnMatrix EX 2k

cnMatrix EX 2K Family

- No integrated GPS Sync
- No Passive High Power (cnMedusa)
- No DC power

ePMP & CMM5 Deployments

- Integrated GPS Sync – Not Needed
- Passive High Power – Not Needed

cnMatrix - Enterprise Campus – 3 Tier Network Architecture

Core



Distribution

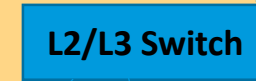


Access

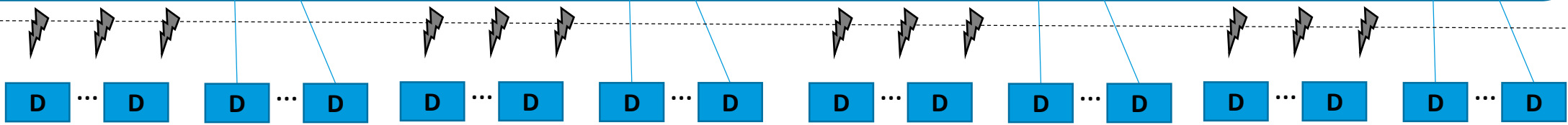
TAM \$14 Billion



cnMatrix

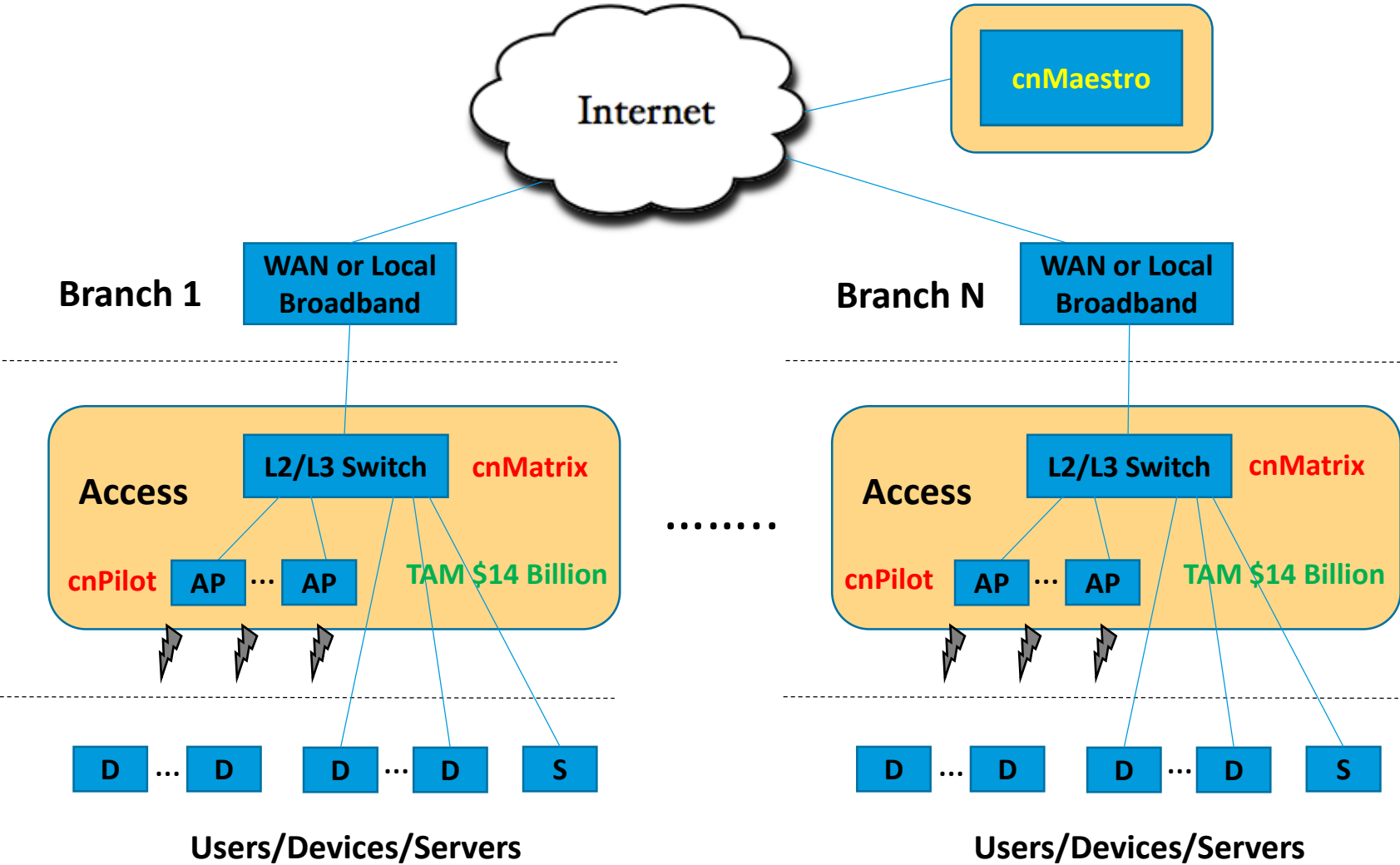


cnPilot

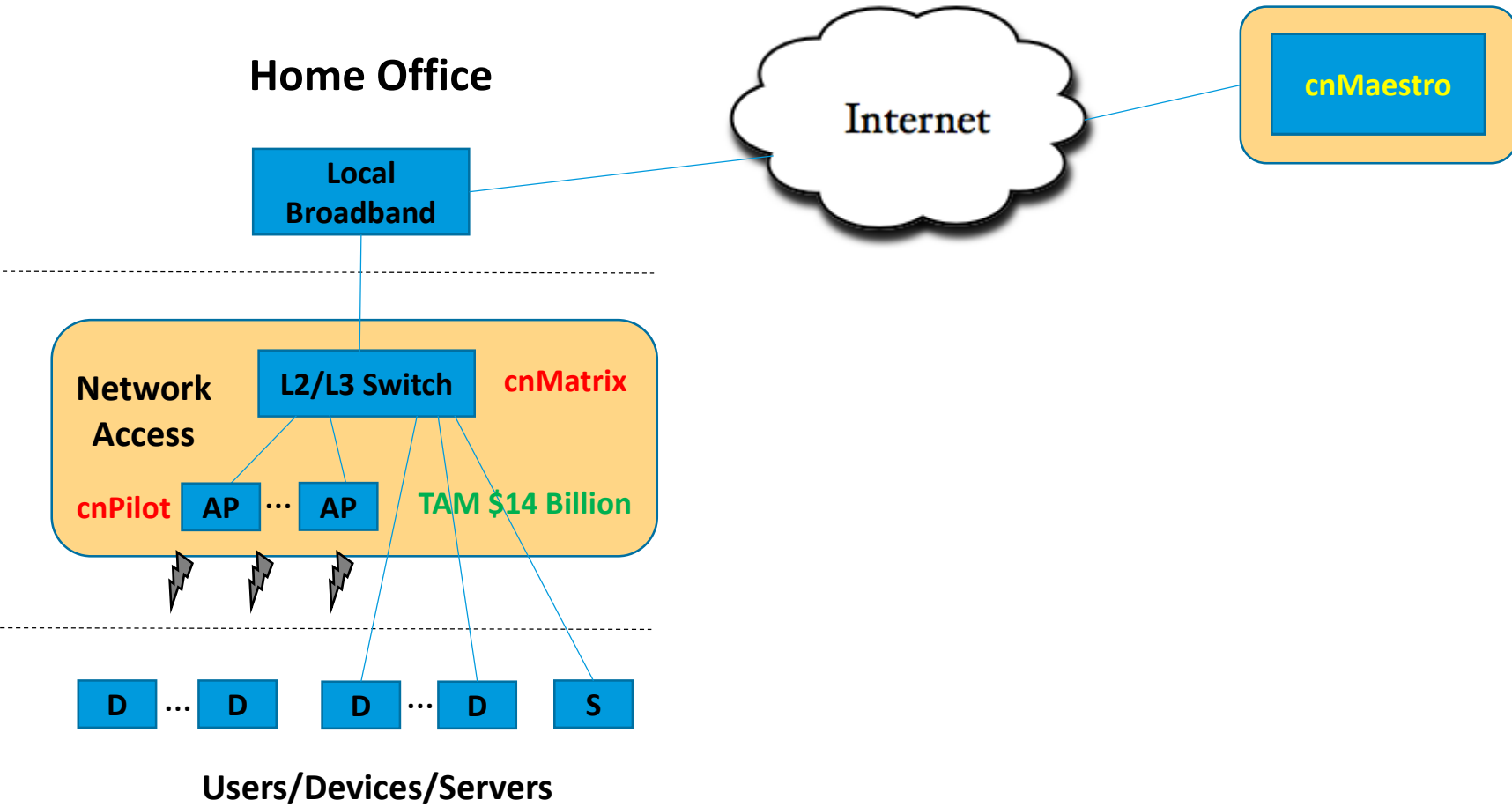


Users/Devices

cnMatrix - Enterprise Branch Office

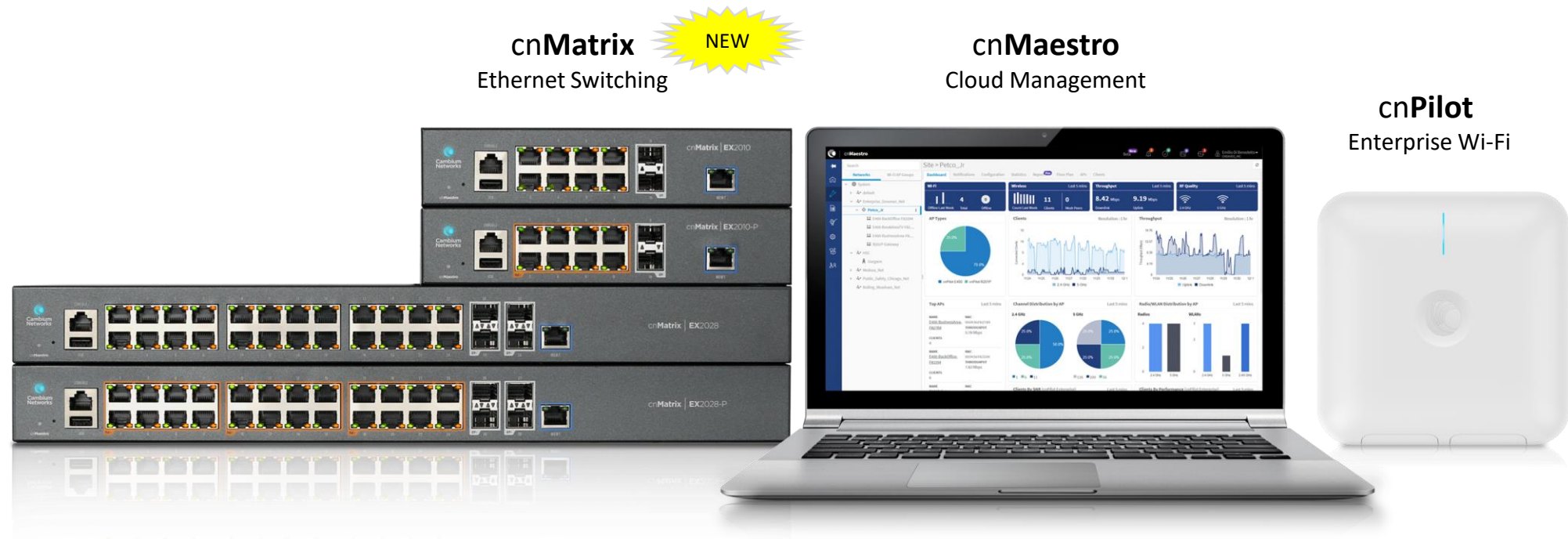


cnMatrix - Home Office



Cambium Networks Cloud Managed Enterprise Access Networking

Evolving from Cloud Managed Wireless LAN to Cloud Managed Access



Introducing Cambium CnMatrix Ethernet Switching Portfolio

Cloud Managed | Enterprise Grade | Complete Layer 2, Layer 3 Functionality

cnMaestro + cnPilot + cnMatrix



Q&A

cnMatrix Overview



cnMatrix



Cambium NetworksTM