

Victory XL 130

EU

ACN# 088/609/661

Illustrated Parts Breakdown



Pride

Your new Pride Illustrated Parts Breakdown (IPB) Manual has been compiled from the latest product information available at the time of publication. Pride Mobility Products® Corporation reserves the right to make changes and updates to this manual and to the product(s) it represents. Any changes, updates, or improvements to the product(s) may result in slight differences between this manual and the product you purchased.

An IPB is an illustrated parts listing of all product components which have maintenance significance. IPB's utilize "exploded" drawings to detail the individual components for each assembly and an itemized list of reference numbers, part numbers, descriptions, and quantities per assembly. Some parts may be included in an assembly but may not be available for purchase separately. Refer to the parts list to locate the part numbers for assemblies and components for ordering what you need.

To achieve proper identification and relationship of detail parts and next higher assemblies, parts listings are presented in a convenient alphanumeric reference system. Reference numbers for parent assemblies identify one part number that can be used to order all of the components listed within it. Components of an assembly will have the same alpha character as its parent assembly.

- „ For example, the parent assembly part number using reference number of A1 — A4 is the only number you need to place an order for parts with references of A1, A2, A3, and A4. Instead of ordering 4 separate parts, use the parent assembly part number to get the complete assembly.

Master assembly part numbers have reference numbers that include several subassemblies. By ordering parts using master assembly part numbers, you can save a lot of time and reduce the chance for error.

- „ For example, A1 — G10, a master assembly reference number, includes all components of assemblies A, B, C, D, E, F, and G. Use caution when ordering assemblies. Check to see if a master assembly part number exists for the components that you need. If an entire master assembly is not needed, then the individual assembly part number (i.e. for reference number G1 — G10) will be sufficient to use for ordering.

Asterisks (*) and NOTES are used throughout this service manual to point out important information regarding assembly structure and contents.

- „ For example, in some illustrations, only the left OR right side is shown. In other drawings, only the front OR back is depicted. The part numbers for ALL components are listed. An asterisk will also be used to indicate which components are not illustrated. Illustrated Items without callouts are shown for assembly purposes.

Updates to the contents of this IPB will be made on a regular basis. Providers may retrieve updates immediately upon their release by going to the Pride Service Website. The web address is www.prideservice.com. We welcome any questions or comments regarding the new Pride IPB Manual that you may have.

Please note that all pricing that is included with this manual is subject to change without any prior notice.

Thank you for choosing products from Pride Mobility Products® Corporation.

Copyright © 2009

Pride Mobility Products® Corporation

www.pridemobility.com

INFMANU3926/Rev.A/091709

SECTION I.

Frame Assembly

- Tiller.....4
- Front8
- Seat Post & Lock-up.....12
- Rear14
- Basket16

SECTION II.

Drive Assembly18

SECTION III.

Console Assembly20

SECTION IV.

Shroud Assembly

- Tiller.....22
- Front24
- Rear w/Electronics26
- Battery.....30

SECTION V.

Wheel Assembly

- Front w/Brake Hub.....32
- Rear.....33

SECTION VI.

Handbrake Assembly34

SECTION VII.

Charger Assembly36

SECTION VIII.

Decal Package

- Italy.....37
- Europe.....38

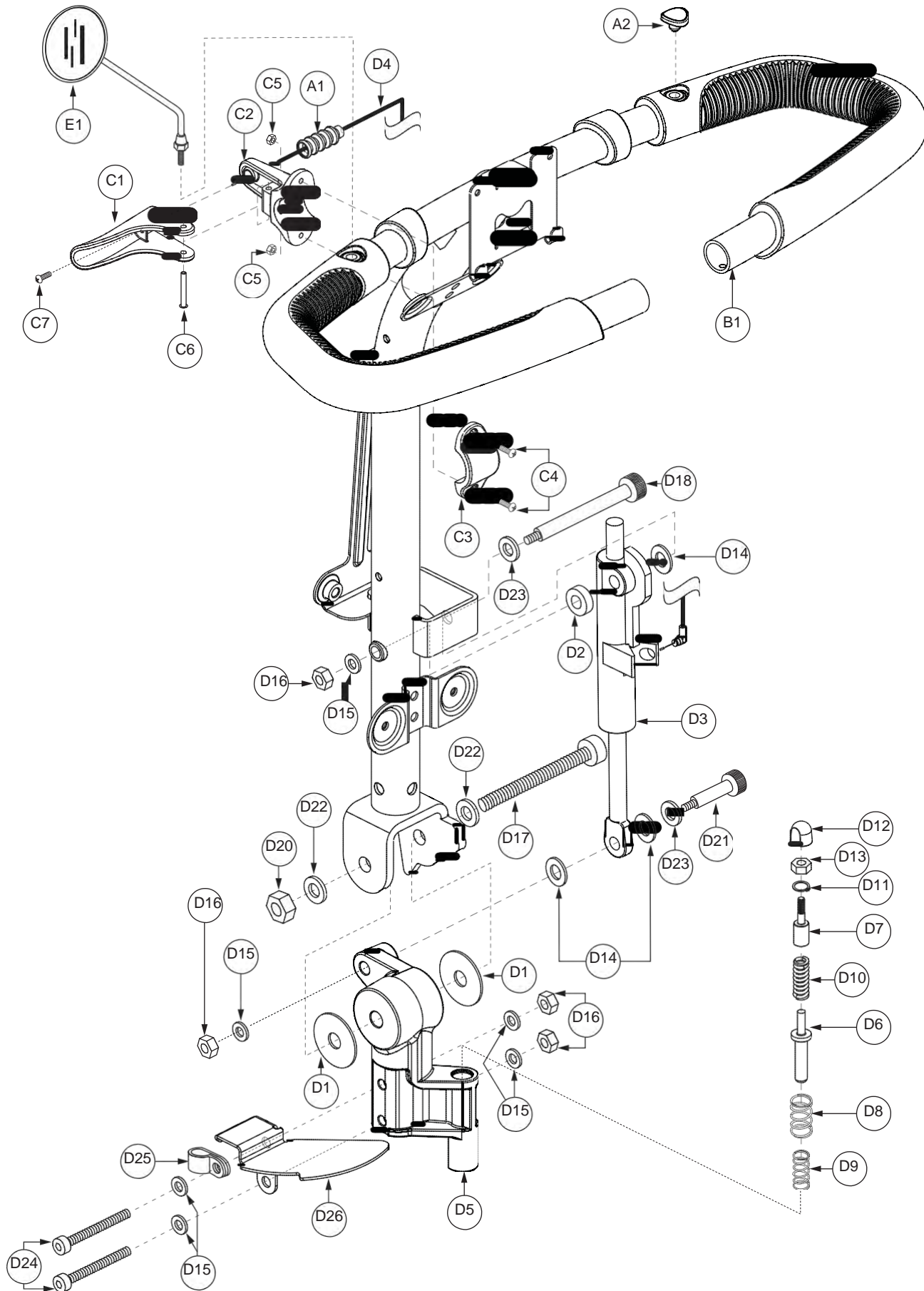
SECTION IX.

Owner's Package

- Italy.....39
- Europe.....40

APPENDIX A.

Electrical System Diagram.....41



REF #	PART #	DESCRIPTION	QTY
A1 - D26	FRMASMB15324	TILLER,ASSY,DELTA,COMPLETE,WITH HANDBRAKE,SC713	1
A1	DWR9763C021	TILLER,BOOT,BLACK,TPV,SC713,C-9763-021	1
*A2	DWR9763C019	PLUG,BLACK,RUBBER,12,4MM OVERALL LENGTH,MIRROR MOUNT,C-9763-019	2
*A3	DWR9763H005	ELECTRONIC,HARNESS,TILLER,SC713,H-9763-005	1
B1 - B4	FRMASMB15327	TILLER,ASSY,DELTA,WITH LEFT/RIGHT READY HANDBRAKE,SC713	1
B1	DWR9763E044	TILLER,WELDMENT,INFINITE ADJUSTMENT,W/OVERMOLD,SC713,E-9763-044	1
*B2	PLSTIE1004	TIE WRAP,BLACK,8"	2
*B3	DWR9763D018	TILLER,INSERT,LEVER ADJUST,LEFT,SC713,D-9763-018	1
*B4	DWR9763D021	TILLER,INSERT,BRAKE LEVER,RIGHT,SC713,D-9763-21	1
C1 - C7	FRMASMB9908	LEVER,ASSY,ADJUSTMENT,DELUXE PIVOT TILLER,SC4001DX/4401DX,D-9565-032	1
C1	DWR9565C098	LEVER,ADJUSTMENT,GRAY,NYLON,DELUXE PIVOT TILLER,SC4001DX/SC4401D,C-9565-098	1
C2	DWR9565C099	LEVER,ADJUSTMENT,BASE,BLACK,NYLON,BLACK NYLON,DELUXE PIVOT TILLER,SC4001DX/SC4401DX,C-9565-099	1
C3	DWR9565C100	LEVER,ADJUSTMENT,BACK,BLACK,NYLON,DELUXE PIVOT TILLER,SC4001DX/SC4401DX,C-9565-100	1
C4	SCRPPH1021	SCREW,PPH,BLACK ZINC,M3-.5 X 10MM	2
C5	NUTNYLK1072	NUT,NYLOCK,BLACK ZINC,M3-.5	2
C6	DWR1005B131	RIVET,SEMITUBULAR,3MM OD X 24MM LENGTH,DELUXE PIVOT TILLER LEVER,SC4001DX/SC4401DX,B-1005-131	1
C7	SCRPPH1162	SCREW,PPH,BLACK ZINC,M4 X 10MM,THREAD FORMING	1
D1 - D26	FRMASMB15328	TILLER,ASSY,LEFT/RIGHT INFINITE ADJUSTMENT,SC713	1
D1	DWR9763B027	SPACER,BLACK,PVC,10.3MM ID X 35MM OD X 2MM THK,INNER TILLER,B-9763-027	2
D2	DWR9763B028	SPACER,BLACK,NYLON 6/6,8.5MM ID X 16MM OD X 4MM THK,INSIDE ACTUATOR,B-9763-028	1
D3	INDPART2050	ACTUATOR,MECH-LOCK,SPRING LOADED,LEFT SIDE,(PL PORTER: MM65-1272)	1
D4	DWR9565B096	CABLE,RELEASE,19" LENGTH,DELUXE PIVOT TILLER,SC4001DX/SC4401DX,(PL PORTER: MC712-019-00),B-9565-096	1
D5	DWR9763D046	TILLER,KNUCKLE,BLACK E-COAT,INFINITE ADJUSTMENT,SC713,D-9763-046	1
D6	DWR9966B014	PIN,BLACK,ZINC,TILLER LOCK,LOWER,B-9966-014	1
D7	DWR9966B047	PIN,TILLER LOCK,UPPER,VICTORY 9-10,B-9966-047	1
D8	DWR9966B045	SPRING,TILLER LOCK,LOWER,OUTER,VICTORY 9-10,B-9966-045	1
D9	DWR9966B046	SPRING,TILLER LOCK,LOWER,INNER,VICTORY 9-10,B-9966-046	1
D10	DWR9966B036	SPRING,MUSIC WIRE,TILLER LOCK,UPPER,VICTORY 9-10,B-9966-036	1
D11	RNGRTAN1044	RETAINING RING,INTERNAL,BLACK ZINC,.500"	1
D12	DWR9966B016	BUTTON,NYLON,11MM ID X 17MM OD X 2MM TH,TILLER LOCK PIN,M6 INSERT,FOR 9"-10",B-9966-016	1
D13	NUTJAM1041	NUT,JAM,BLACK ZINC,M6-1.0	1
D14	DWR9763B030	SPACER,BLACK,NYLON 6/6,8.5MM ID X 16MM OD X 1.52MM THK,OUTSIDE ACTUATOR,B-9763-030	3
D15	WASMETR1033	WASHER,FLAT,BLACK ZINC,6.4MM ID X 12MM OD X 1.6MM TH,METRIC,GB96-6	6
D16	NUTNYLK1019	NUT,NYLOCK,BLACK ZINC,M6-1.0	4
D17	SCRSHCS1291	SCREW,SHCS,BLACK ZINC,M10-1.5 X 70MM	1
D18	BLTASHL1210	BOLT,SHOULDER,BLACK ZINC,M8 X 65MM	1
*D19	DWR9763C020	BUMPER,TILLER,BLACK,TPV,SC713,C-9763-020	1
D20	NUTNYLK1094	NUT,NYLOCK,BLACK ZINC,M10-1.5	1
D21	BLTASHL1209	BOLT,SHOULDER,BLACK ZINC,M8 X 30MM	1

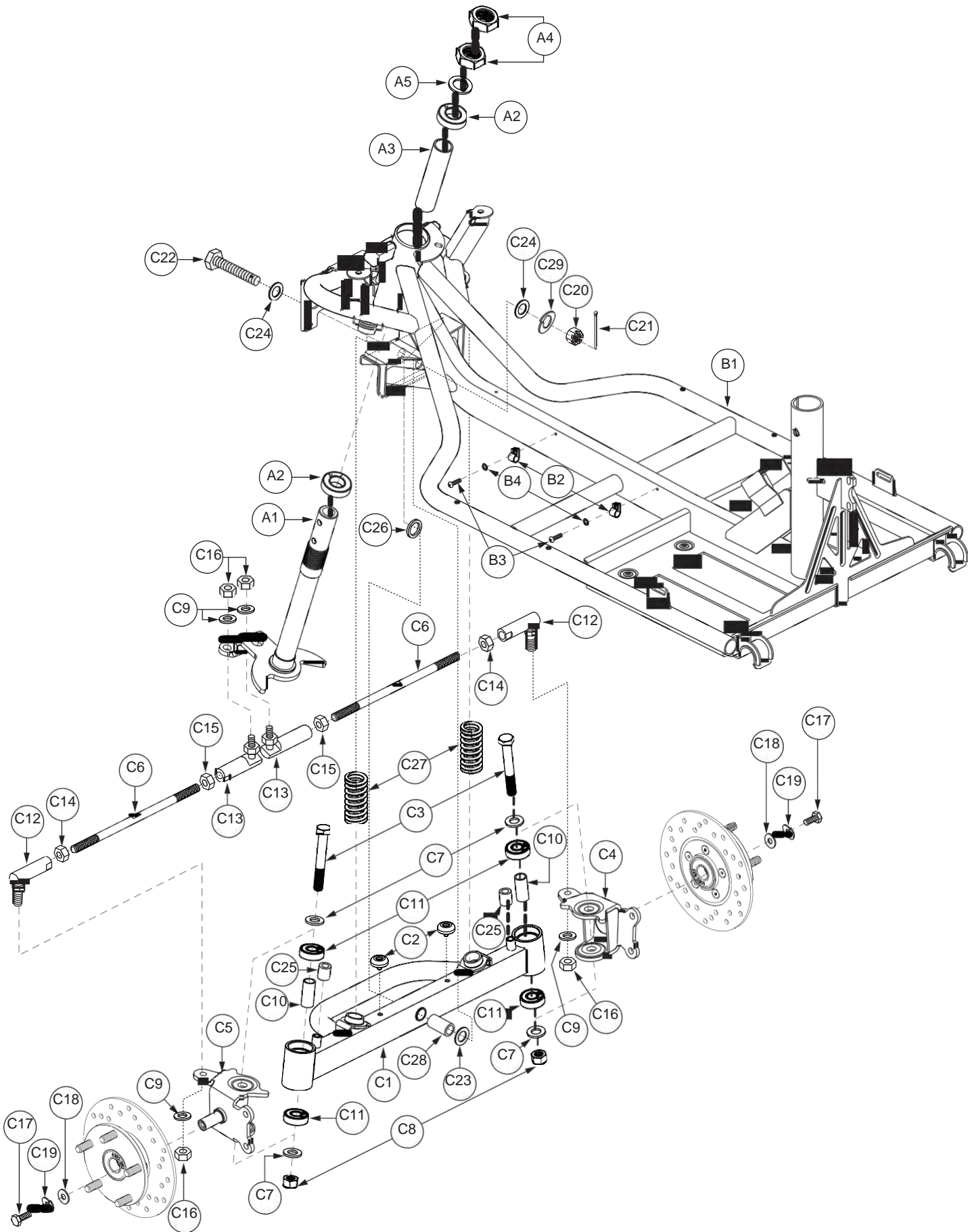
The parts list is continued on the subsequent pages.

The parts list is continued from the previous pages.

REF #	PART #	DESCRIPTION	QTY
D22	WASMETR1132	WASHER,FLAT,BLACK ZINC,M10	2
D23	WASSTND1102	WASHER,FLAT,BLACK ZINC,M8	2
D24	SCRSHCS1292	SCREW,SHCS,BLACK ZINC,M6-1.0 X 45MM	2
D25	CLPCBLC1040	CLAMP,CABLE,BLACK,NYLON COATING,9/16" DIAM.,C-1005-056	1
D26	DWR9763D053	TILLER,GUARD,BLACK,POWDER COAT,PUMPKIN,SC713,D-9763-053	1
E1	LGTRMIR1003	MIRROR,M8 X 1.25T, 102MM DIA,REAR VIEW, SCREW IN, LENS	1

Notes :

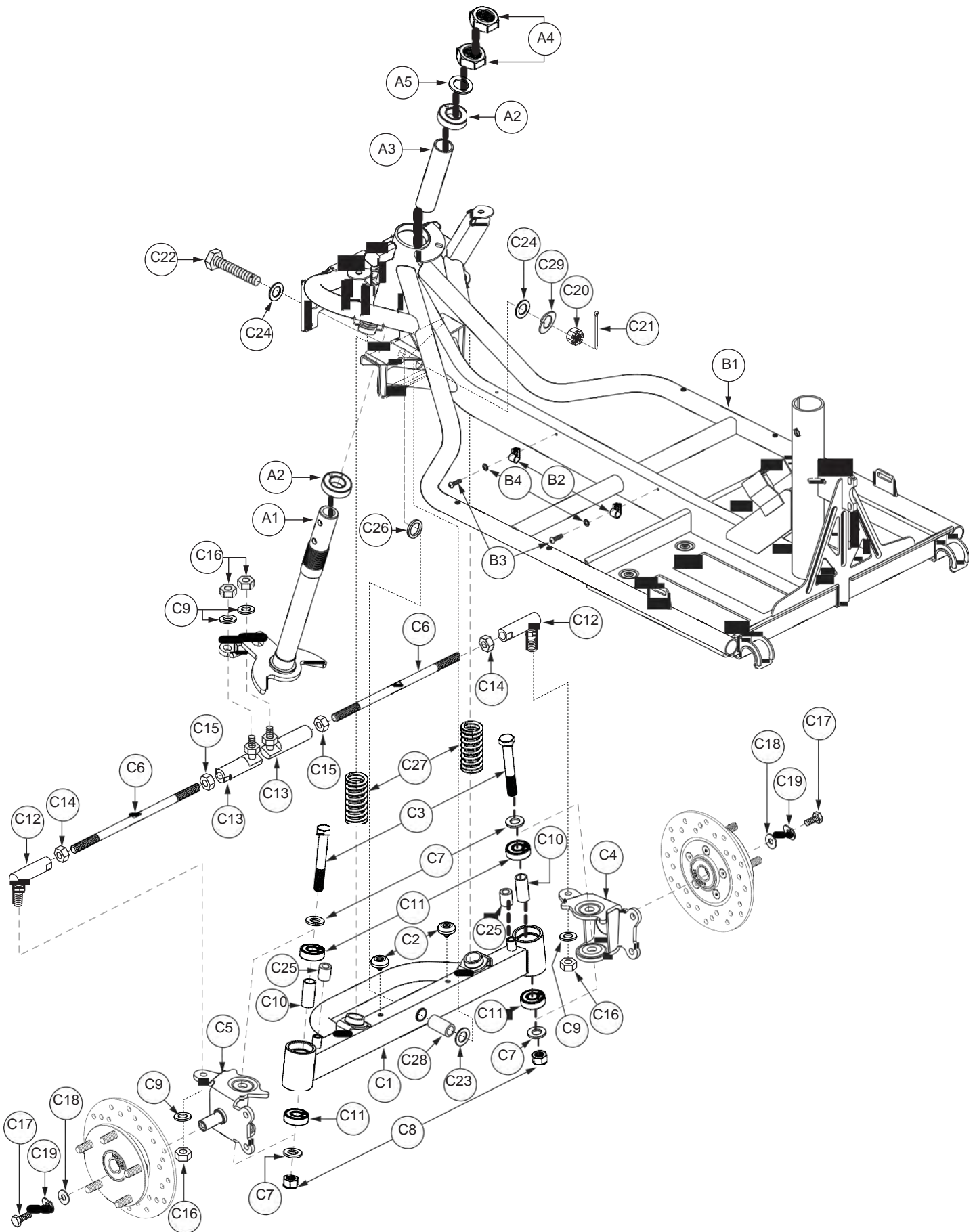
- *A2 One shown.
- *A3 Refer to SECTION III. Console Assembly for the illustration.
- *B2 Not shown.
- *B3 Refer to SECTION IV. Shroud Assembly - Tiller for the illustration.
- *B4 Refer to SECTION IV. Shroud Assembly - Tiller for the illustration.
- *D19 Refer to SECTION III. Console Assembly for the illustration.



I. Frame Assembly — Front

REF #	PART #	DESCRIPTION	QTY
A1 - E1	FRMASMB15313	FRAME,ASSY,FRONT,COMPLETE,SC713	1
A1 - A5	FRMASMB15317	FRAME,ASSY,STEERING STEM,SC713	1
A1	DWR9763C018	FRAME,WELDMENT,STEERING STEM,SC713,C-9763-018	1
A2	BRGSLV1064	BEARING,SLEEVE,22MM ID X 44MM OD X 12MM THK,(60/22 2RS),C-1005-051	2
A3	BRGSLV1065	BEARING,SLEEVE,22.5MM ID X 27MM OD X 116MM L,B-9763-012	1
A4	NUTJAM1047	NUT,JAM,HEX,BLACK ZINC,M22-1.5,B-1005-222	2
A5	WASSTND1192	WASHER,FLAT,BLACK ZINC,22MM ID X 35MM OD X 3MM THK,B-1005-221	1
B1 - C29	FRMASMB15314	FRAME,ASSY,FRONT,WITH STANDARD SEAT POST,SC713	1
B1	DWR9763E033	FRAME,FRONT,WELDMENT,WITH STANDARD SEAT POST,13",4 WHEEL,E-9763-033	1
B2	CLPCBLC1027	CLAMP, CABLE,BLACK,NYLON,5/8"	2
B3	SCRPPH1050	SCREW,PPH,BLACK ZINC,M4-.7 X 10MM	2
B4	WASSTND1105	WASHER,FLAT,BLACK ZINC,M4	2
C1 - C29	FRMASMB15311	AXLE,ASSY,FRONT,SC713	1
C1	DWR9763E031	AXLE,WELDMENT,4 WHEEL,SC713,E-9763-031	1
C2	DWR9966C034	AXLE,PIVOT STOPPER,BLACK,RUBBER,FOR 9"-10"4 WHEEL,C-9966-034	2
C3	SCRHHCS1619	SCREW,HHCS,BLACK ZINC,M12-1.75 X 85MM,GRADE 12.9	2
C4	DWR9763D005	FRAME,WELDMENT,SPINDLE,RIGHT,SC713,C-9763-005	1
C5	DWR9763D007	FRAME,WELDMENT,SPINDLE,LEFT,SC713,C-9763-007	1
C6	DWR9763C067	TIE ROD,STEEL,M8-1.25,178MM L,C-9763-067	2
C7	WASSTND1194	WASHER,FLAT,BLACK ZINC,12MM X 24MM OD X 2.5MM TH	4
C8	NUTNYLK1089	NUT,NYLOCK,BLACK ZINC,M12-1.75T	2
C9	WASSTND1123	WASHER,FLAT,BLACK ZINC,8MM ID X 16MM OD X 1.0MM TH	4
C10	DWR9763B008	BEARING,SLEEVE,BLACK ZINC,12.5MM ID X 16MM OD X 35MM THK,B-9763-008	2
C11	BRGSLV1063	BEARING,SLEEVE,12MM ID X 32MM OD X 10MM THK,(6201 2RS),C-1005-050	4
C12	INDPART2333	BALL JOINT,M8-1.25,MACHINED, LEFT, BLACK ZINC	2
C13	INDPART2334	BALL JOINT,M8-1.25,MACHINED, RIGHT, BLACK ZINC	2
C14	NUTSTD1043	NUT,LH,BLACK ZINC,M8-1.25	2
C15	NUTSTD1044	NUT,RH,BLACK ZINC,M8-1.25	2
C16	NUTNYLK1011	NUT,NYLOCK,BLACK ZINC,M8-1.25	4
C17	SCRHHCS1645	SCREW,HHCS,ZINC,M8-1.25 X 12MM,GRADE 12.9	2
C18	WASSTND1062	WASHER,FLAT,ZINC,M8 X 22MM OD X 2MM TH	2
C19	WASLOCK1025	WASHER,LOCK,ZINC,M8 X 15MM OD X 2MM TH	2
C20	NUTSLOT1002	NUT,SLOTTED,BLACK ZINC,M12-1.75,CASTLE STYLE,GRADE 10.9,C-9983-063	1
C21	PINSOTR1016	PIN,COTTER,BLACK ZINC,STEEL,M3 X 28MM,DIN94/ISO1234,SC44E	1
C22	SCRHHCS1620	SCREW,HHCS,BLACK ZINC,M12-1.75 X 60MM,PIVOT BOLT,GRADE 10.9,B-9763-006	1
C23	DWR9763B009	SPACER,BLACK,NYLON,18.25MM ID X 25MM OD,3.0MM THK,B-9763-009	1
C24	WASSTND1193	WASHER,FLAT,BLACK,STEEL,12MM ID X 26MM OD X 2MM THK	2
C25	DWR9961B019	NOISE DAMPER,FORK,BLACK,FLEXIBLE PVC,SC610,B-9961-019	2
C26	DWR9763B007	SPACER,BLACK,NYLON,15MM ID X 25MM OD,1.5MM THK,B-9763-007	1
C27	DWR1005C057	SPRING,COMPRESSION,YELLOW,78MM FL X 37MM OD X 6MM WIRE DIA X RATE:220 LBS/IN,C-1005-057	2
C28	BSHSLV1030	BUSHING,SLEEVE,SILVER ZINC,12MM ID X 15MM OD X 38MM THK,B-9763-033	1

The parts list is continued on the subsequent pages.



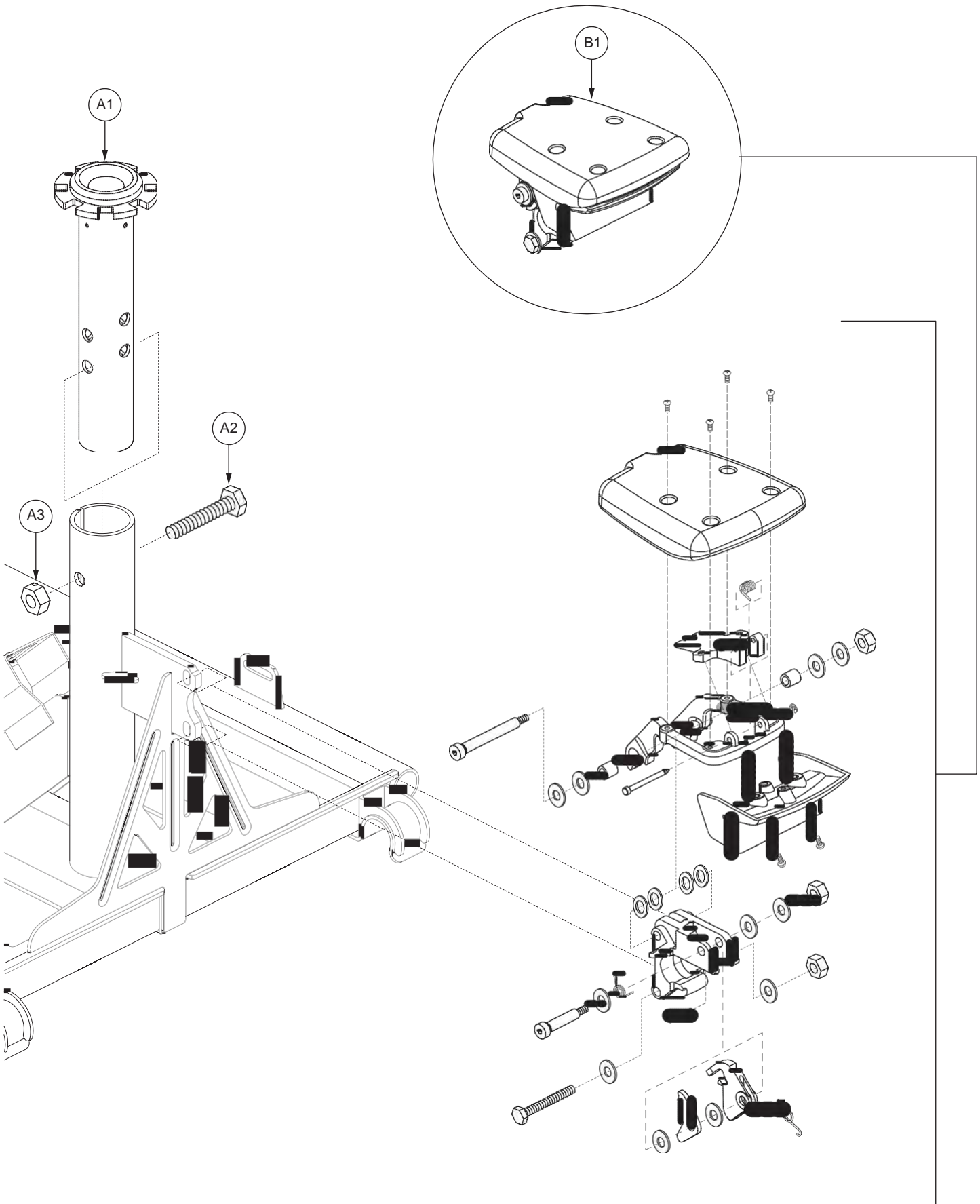
I. Frame Assembly — Front

The parts list is continued from the previous pages.

REF #	PART #	DESCRIPTION	QTY
C29	WASLOCK1081	WASHER,LOCK,BLACK ZINC,M12	1
*D1	FRMASMB15323	SEAT POST,ASSY,UPPER,8 POSITION,4-HOLE,SC713	1
*E1	FRMASMB11066	HANDLE,ASSY,LOCK-UP RELEASE,VICTORY 9-10,D-9966-028	1

Notes :

- *D1 Refer to SECTION I. Frame Assembly - Seat Post & Lock-up for the illustration and parts list.
- *E1 Refer to SECTION I. Frame Assembly - Seat Post & Lock-up for the illustration and parts list.

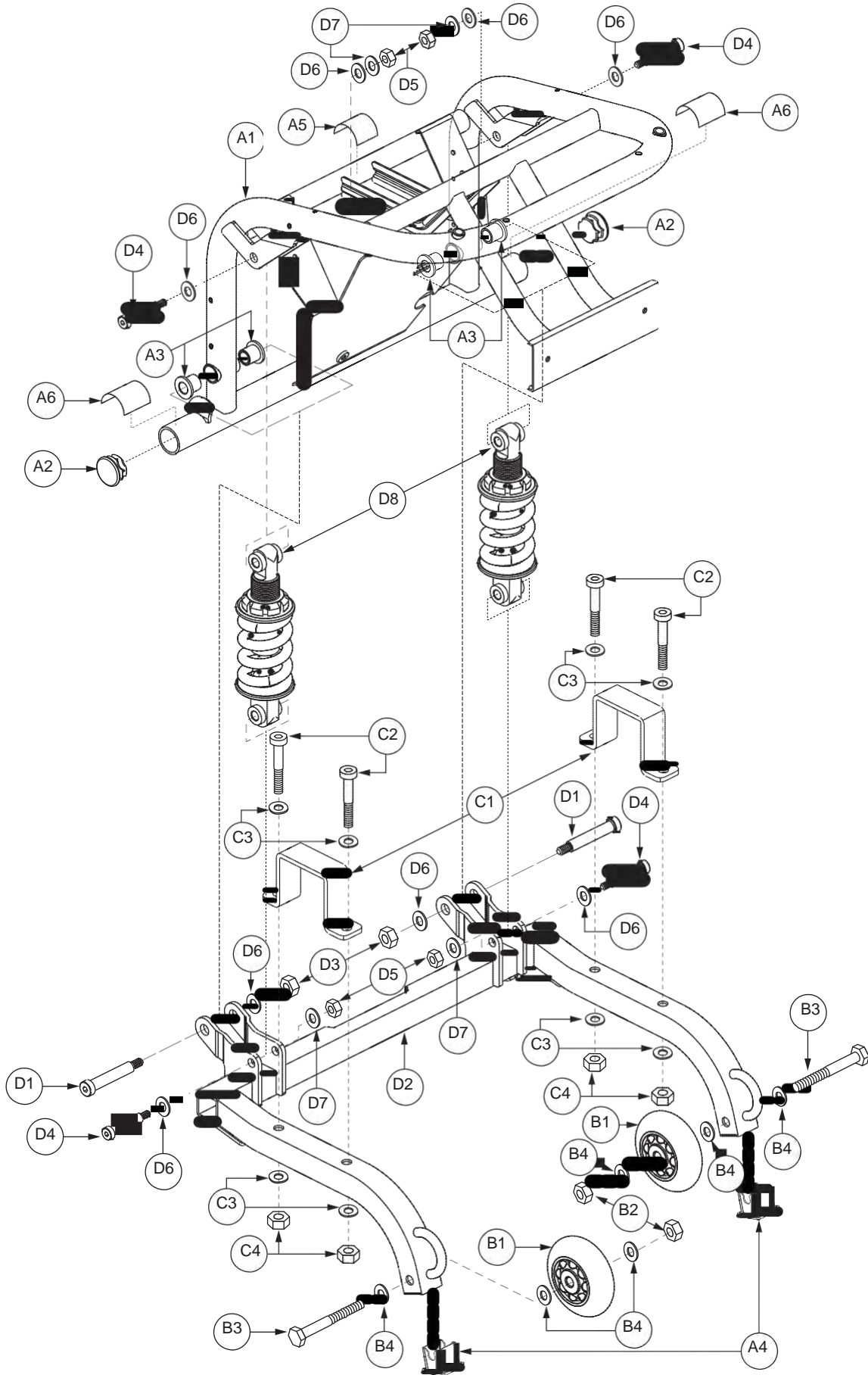


I. Frame Assembly — Seat Post & Lock-up

REF #	PART #	DESCRIPTION	QTY
A1 - A3	FRMASMB15323	SEAT POST,ASSY,UPPER,8 POSITION,4-HOLE,SC713	1
A1	DWR9763D052	SEAT POST,UPPER,4 POSITION,SC713,D-9763-052	1
A2	SCRHHCS1507	SCREW,HHCS,ZINC,M10-1.5 X 55MM,CLASS 10.9	1
A3	NUTNYLK1099	NUT,NYLOCK,ZINC,M10-1.5,CLASS 8	1
*B1	FRMASMB11066	HANDLE,ASSY,LOCK-UP RELEASE,VICTORY 9-10,D-9966-028	1

Notes :

*B1 This item is a quantity of one but is illustrated as multiple parts for assembly purposes.

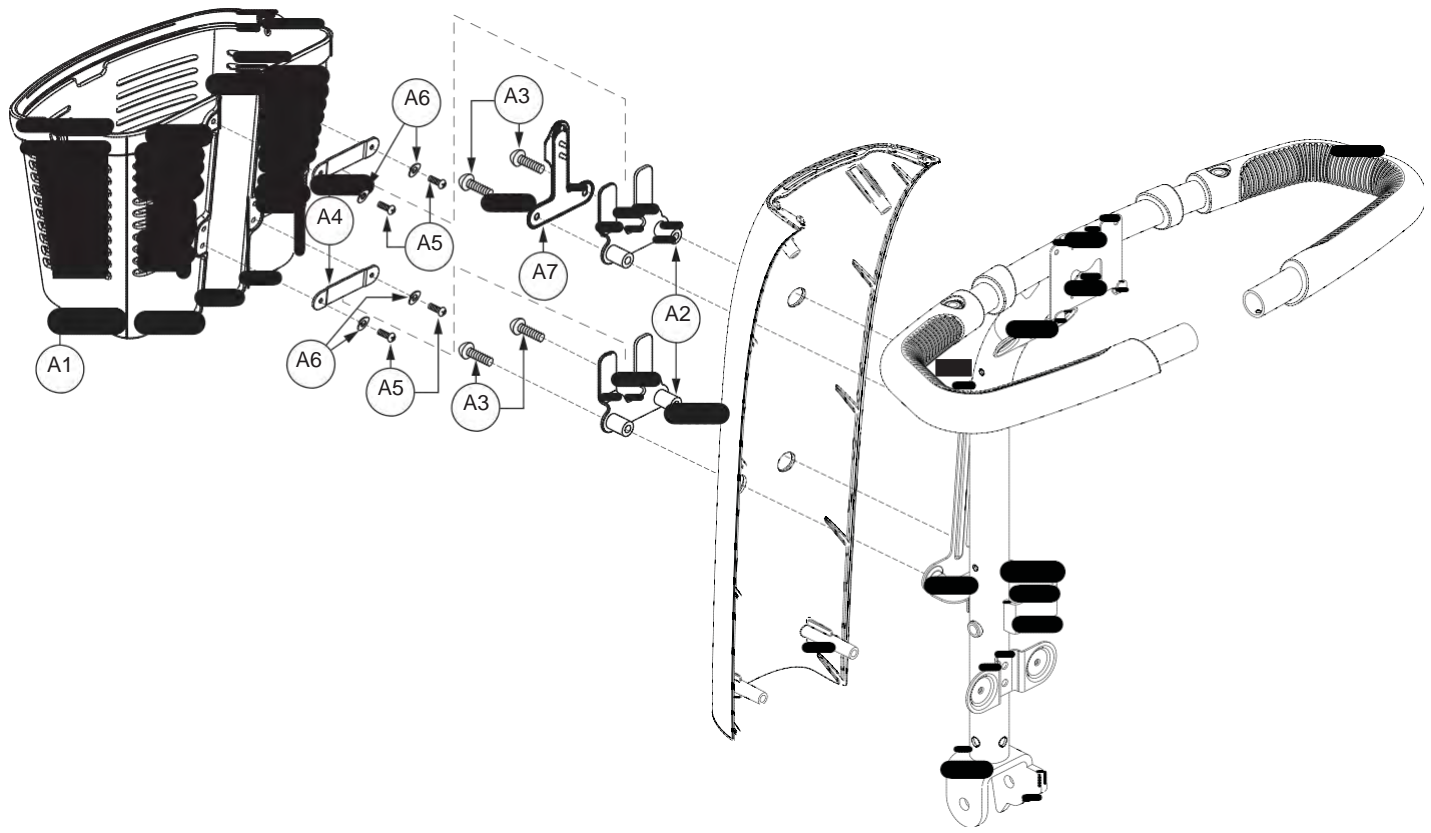


I. Frame Assembly — Rear

REF #	PART #	DESCRIPTION	QTY
A1 - E1	FRMASMB15315	FRAME,ASSY,REAR,COMPLETE,SC713	1
A1 - A6	FRMASMB15316	FRAME,ASSY,REAR,SC713	1
A1	DWR9763E004	FRAME,REAR,WELDMENT,SC713,E-9763-004	1
A2	DWR9565B078	END CAP,BLACK,PLASTIC,1" DIA,FITS 0.9" ID TUBE,RIBBED,B-9565-078	2
A3	BSHFLNG1068	BUSHING,FLANGE,OIL IMPREGNATED BRONZE,10MM ID X 14MM OD X 2MM TH X 20MM FOD X 2MM FTH,B-9763-003	4
A4	DWR9983B053	CAP,ANTI-TIP TUBE,REAR FRAME,SC40E/44E,B-9983-053	2
A5	DWR9983B061	CLEAR FILM,ADHESIVE BACK,25MM X 58.7MM,B-9983-061	1
A6	DWR9983B062	CLEAR FILM,ADHESIVE BACK,35MM X 58.7MM,B-9983-062	2
B1 - B4	WHLASMB1453	WHEEL,ASSY,ANTI-TIP,SUNDANCER 2001	2
B1	WHLATIP1004	WHEEL,ANTI-TIP,BLACK,3" DIAMETER	1
B2	NUTNYLK1011	NUT,NYLOCK,BLACK ZINC,M8-1.25	1
B3	SCRHHCS1361	SCREW,HHCS,BLACK ZINC,M8-1.25 X 65MM,GRADE 10.9	1
B4	WASMETR1009	WASHER,FLAT,BLACK ZINC,M8 X 1.2MM THICK	3
C1 - C4	FRMASMB10467	FRAME,ASSY,TRANSAXLE MOUNTING,CELEBRITY XL,MTS M4 MOTOR PACKAGE,SC4450X	1
C1	DWR9660C047	BRACKET,AXLE,MTS M4 TRANSAXLE,SC3450,C-9660-047	2
C2	SCRSHCS1231	SCREW,SHCS,BLACK ZINC,M8-1.25 X 45MM,GRADE 12.9	4
C3	WASSTND1102	WASHER,FLAT,BLACK ZINC,M8	8
C4	NUTNYLK1011	NUT,NYLOCK,BLACK ZINC,M8-1.25	4
D1 - D8	FRMASMB15319	FRAME,ASSY,TRAIL ARM,W/STEEL BODIED SHOCKS,SC713	1
D1	BLTASHL1208	BOLT,SHOULDER,BLACK ZINC,M10 X 40MM,GRADE 12.9	2
D2	DWR9763E032	FRAME,TRAIL ARM,WELDMENT,SC713,E-9763-032	1
D3	NUTNYLK1011	NUT,NYLOCK,BLACK ZINC,M8-1.25	2
D4	BLTASHL1140	BOLT,SHOULDER,8MM X 35MM,GRADE 12.9,B-1005-006	4
D5	NUTNYLK1019	NUT,NYLOCK,BLACK ZINC,M6-1.0	4
D6	WASMETR1130	WASHER,FLAT,BLACK ZINC,8.4MM ID X 16MM OD X 2.0MM TH	8
D7	WASMETR1131	WASHER,FLAT,BLACK ZINC,6MM ID X 14MM OD X 1MM THK	4
D8	FRMASMB14266	SUSPENSION,ASSY,SHOCK,TRAIL ARM,SC713,C-9763-057	2
*E1	FRMASMB15320	FREEWHEEL,ASSY,LEVER,SC713	1

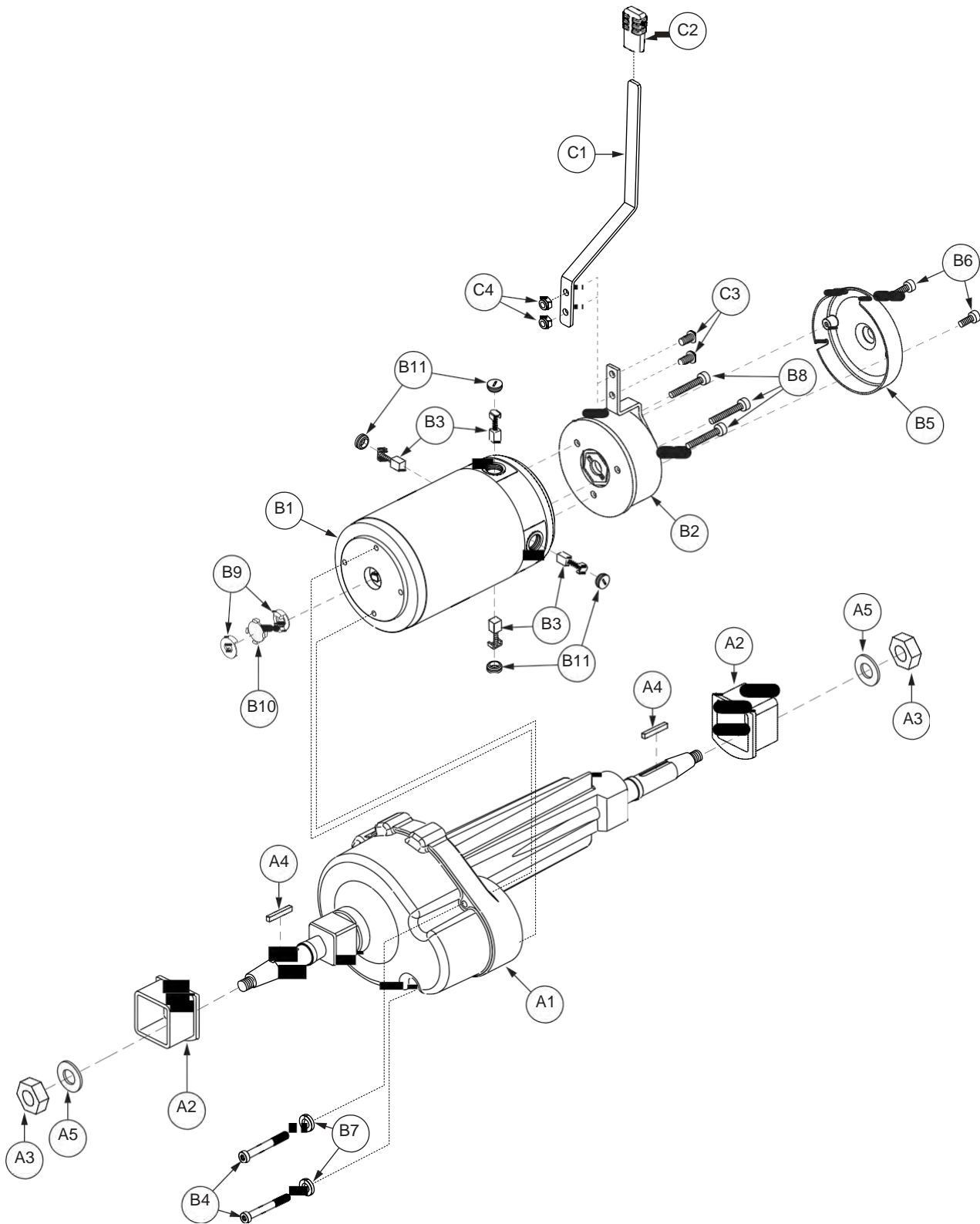
Notes :

*E1 Refer to SECTION II. Drive Assembly for the illustration and parts list.



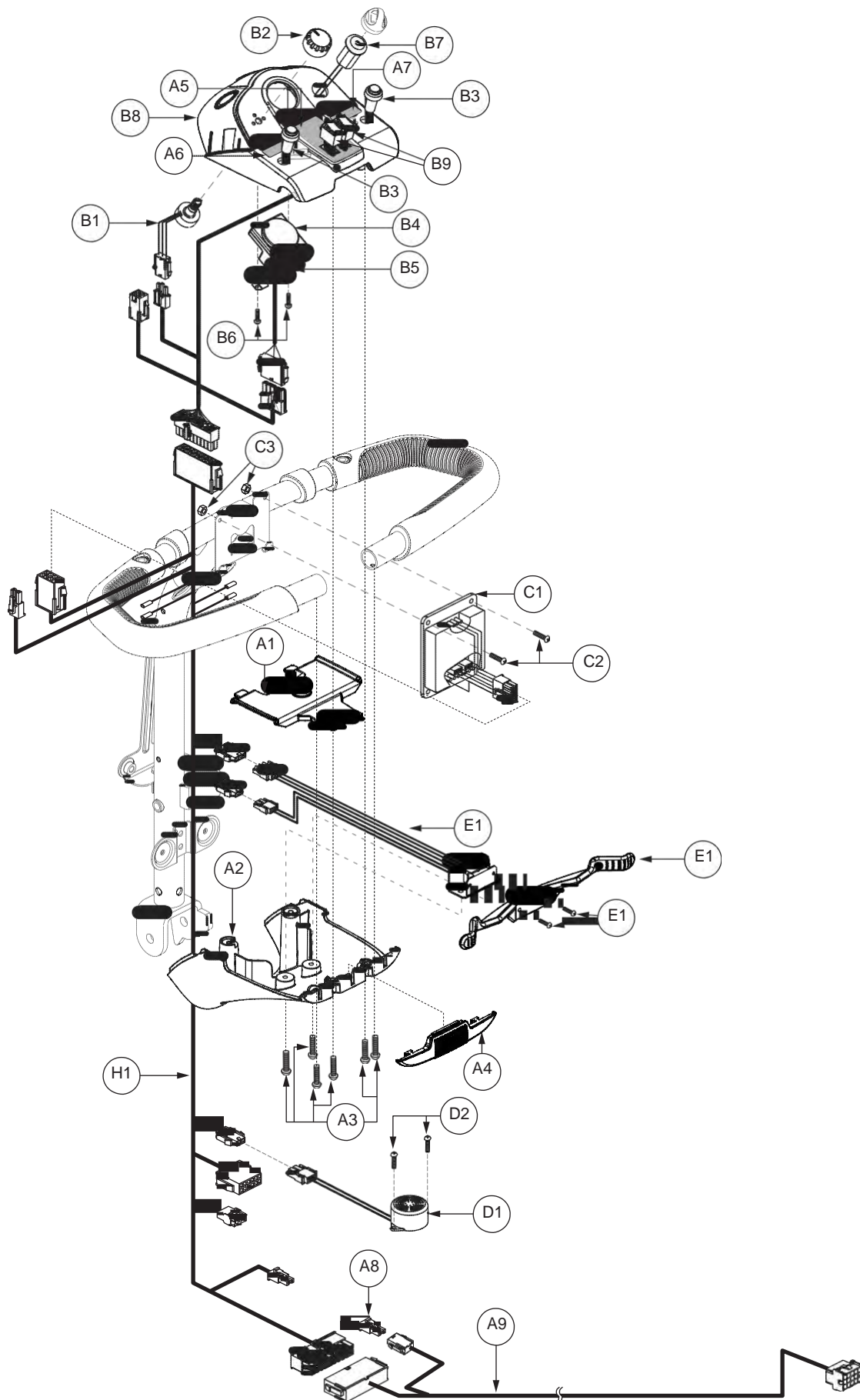
I. Frame Assembly — Basket

REF #	PART #	DESCRIPTION	QTY
A1 - A7	ACCASMB2492	BASKET,ASSY,BLACK,PLASTIC,NO TILLER SHIELD,FRONT,SC713	1
A1	DWR9565E048	BASKET,TILLER,BLACK,PLASTIC,MEDIUM,WITH HANDLE,SC610/SC710,E-9565-048	1
A2	DWR9763C064	BRACKET,BASKET,BLACK,NO TILLER SHIELD,SC713,C-9763-064	2
A3	SCRPPH1355	SCREW,PPH,BLACK ZINC,M6-1.0 X 30MM,GRADE 10.9	4
A4	DWR9565B094	BRACKET,BASKET,REAR,BLACK POWDERCOAT,FOR MEDIUM PLASTIC BASKET,SC4001DX/4401DX,B-9565-094	2
A5	SCRPPH1050	SCREW,PPH,BLACK ZINC,M4-.7 X 10MM	4
A6	WASLOCK1045	WASHER,LOCK,BLACK ZINC,M4,SPLIT	4
A7	ACCASMB2377	BASKET,LOCK,VICTORY 9-10,C-9965-111	1



II. Drive Assembly

REF #	PART #	DESCRIPTION	QTY
A1 - B11	DRVASMB2101	MOTOR,ASSY,SHORT SHAFT,TAPERED SHAFT,MTS M4,TRANSAXLE/MOTOR/BRAKE,15.3 KPH,SC713,H-1211-008,(MTS: 62001265)	1
A1 - A5	DRVASMB2103	MOTOR,ASSY,TRANSAXLE,SHORT SHAFT,TAPERED SHAFT,15.3KPH,MTS M4 PACKAGE	1
A1	DRVAXL1045	TRANSAXLE,SHORT SHAFT,TAPERED SHAFT,M4,15.3KPH,(MTS: 62201265)	1
A2	INDPART2483	MOUNTING PAD,RUBBER,TRANSAXLE,MTS M4 PACKAGE	2
A3	NUTNYLK1068	NUT,NYLOCK,ZINC,1/2-20	2
A4	KEYSTL1021	KEY,TRANSAXLE,3/16" X 3/16" X 1.138" LENGTH,(MTS: 54300022)	2
A5	WASSTND1133	WASHER, FLAT,ZINC,M13 X 24MM OD X 2.5MM TH	2
B1 - B11	DRVASMB2102	MOTOR,ASSY,12.3KPH/15.3KPH,8NM BRAKE,MTS M4 PACKAGE,W/LOW PROFILE BRAKE CAP,ROTATED AT 90 DEGREES,SC713,(MTS: 62101265)	1
B1	DRVMOTR1376	MOTOR,M4,12.3KPH/15.3KPH,W/CONNECTORS,H-9763-010,(MTS: 62100133)	1
B2	DRV1092	BRAKE,ASSY,STANDARD LOGIC,8NM,JOGGED HANDLE,5" LEAD WIRE,(MTS: 62300036)	1
B3	DRVBRSH1020	MOTOR,BRUSH,(MTS: 62400012)	4
B4	SCRSHCS1124	SCREW, SHCS,ZINC,M6-1.0 X 50MM,G8.8	2
B5	DWR1020D043	BRAKE,CAP,LOW PROFILE,MTS M4,SC4450X,(MTS: 62400113),D-1020-043	1
B6	SCRSHCS1127	SCREW,SHCS,BLACK ZINC,M4-.7 X 10MM,GRADE 8.8	2
B7	WASLOCK1003	WASHER,LOCK,ZINC,M6	2
B8	SCRSHCS1126	SCREW,SHCS,ZINC,M5-.8 X 50MM,GRADE 8.8	3
B9	INDPART2366	MOTOR,COUPLER,MTS,(62400061)	2
B10	INDPART2367	MOTOR,KEY,COUPLING, MTS,(54300011)	1
B11	PLSINDV1209	MOTOR,BRUSH CAP,(MTS: 62400026)	4
C1 - C4	FRMASMB15320	FREEWHEEL,ASSY,LEVER,SC713	1
C1	DWR9763D033	FREEWHEEL,EXTENSION LEVER,SC713,D-9763-033	1
C2	DWR9983B031	COVER,FREEWHEEL LEVER,YELLOW,TPR,B-9983-031	1
C3	SCRASBH1112	SCREW,BHSCS,BLACK ZINC,M6-1.0 X 12MM,GRADE 10.9	2
C4	NUTNYLK1019	NUT,NYLOCK,BLACK ZINC,M6-1.0	2

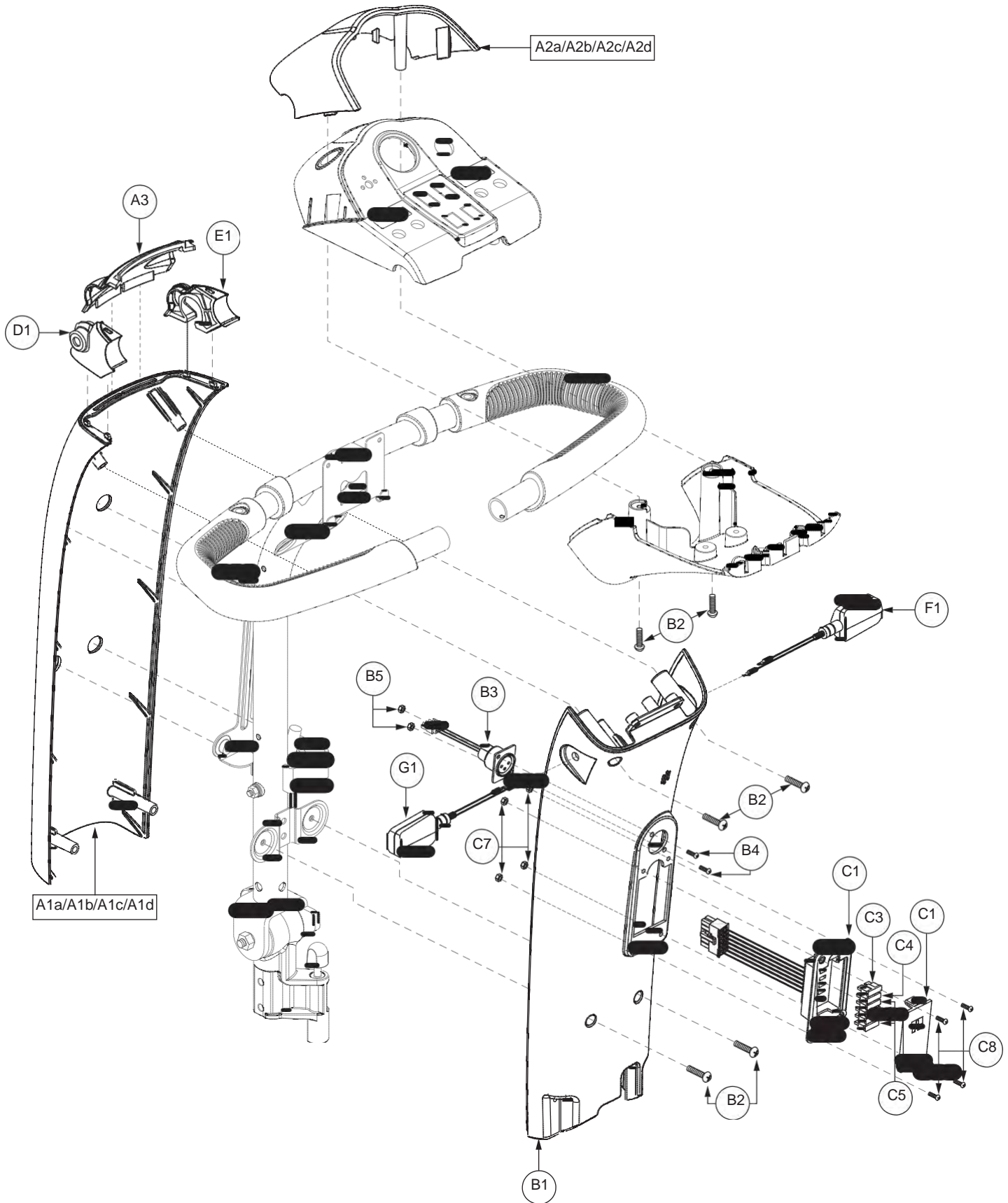


III. Console Assembly

REF #	PART #	DESCRIPTION	QTY
A1 - G1	PLSASMB2143	ELECTRONIC,ASSY,CONSOLE,BLACK,PLASTIC,W/ELECTRONICS,E-MARKED BLINKERS,FOR CTE THROTTLE POT,HANDBRAKE READY,SC713	1
A1	DWR9763E023	COVER,TILLER,WIG WAG,SC713,E-9763-023	1
A2	DWR9763E017	COVER,TILLER,BLACK,ABS,BOTTOM,E-9763-017	1
A3	SCRPPH1036	SCREW,PPH,BLACK ZINC,M4-.7 X 8MM	6
A4	DWR9763C020	BUMPER,TILLER,BLACK,TPV,SC713,C-9763-020	1
A5	DWR9763E018E	DECAL,CONSOLE OVERLAY,DELUXE CONFIGURATION,E-9763-018	1
A6	DWR1235L139	DECAL,CONSOLE,SMALL,LEFT,WITHOUT TURN SIGNAL CUT OUT,L-1235-139	1
A7	DWR1235L140	DECAL,CONSOLE,SMALL,RIGHT,WITHOUT TURN SIGNAL CUT OUT,L-1235-140	1
A8	DWR9763H009	ELECTRONIC,HARNESS,JUMPER,FULL SPEED,H-9763-009	1
A9	DWR9763H003	ELECTRONIC,HARNESS,FRONT-TO-REAR,SC713,H-9763-003	1
B1 - B9	ELEASMB6406	ELECTRONIC,ASSY,CONSOLE,FULL LIGHT,SC713,H-9763-006	1
B1	DWR9555H001	ELECTRONIC,HARNESS, SPEED POT,100K,17MM,H-9555-001	1
B2	DWR9983B030	KNOB,GRAY,PLASTIC,SPEED POT,B-9983-030	1
B3	SWTPSHB1000	ELECTRONIC,SWITCH, HORN,SPST/MOM WITH NUT	2
B4	ELEASMB6815	ELECTRONIC,ASSY,LED METER,C-1020-127	1
B5	DWR9935B029	ELECTRONIC,VOLTMETER,RETAINER, LEGEND, SC3000/3400,B-9935-029	1
B6	SCRPPH1345	SCREW,PPH,SHEET METAL,BLACK ZINC,M2.5 X 5MM	2
B7	SWTKEY1011	ELECTRONIC,KEY SWITCH,W/NUT,MANDO,(MANDO: 7509-N)	1
B8	DWR9763E018	SHROUD,CONSOLE,UPPER,BLACK,SC713,E-9763-018	1
B9	SWTROCK1006	ELECTRONIC,SWITCH, ROCKER,11",4 PIN AMP CONNECTOR,ON/OFF, JEC (JS-606)	2
C1 - C3	ELEASMB4799	ELECTRONIC,ASSY,CONSOLE BOARD,SC4001/4401	1
C1	DWR9763H008	ELECTRONIC,CIRCUIT BOARD,BRAKE LIGHT,SC713,H-9763-008	1
C2	SCRPPH1306	SCREW,PPH,ZINC,M4-.7 X 12MM	2
C3	NUTNYLK1020	NUT,NYLOCK,ZINC,M4-.7	2
D1 - D2	ELEASMB5686	ELECTRONIC,ASSY,HORN,VICTORY 9-10	1
D1	DWR9555H018	ELECTRONIC,HARNESS, HORN,H-9555-018	1
D2	SCRPPH1385	SCREW,PPH-SELF THREADING,ZINC,M2.5 X 8MM	2
*E1	FRMASMB15318	FRAME,ASSY,THROTTLE CONTROL LEVER,FOR CTE THROTTLE POT,SC713	1
*F1	ELEASMB4801	BLINKER,ASSY,RIGHT,FLEXIBLE STALK,E-MARKED,SC4001/4401	1
*G1	ELEASMB4800	BLINKER,ASSY,LEFT,FLEXIBLE STALK,E-MARKED,SC4001/4401	1
H1	DWR9763H005	ELECTRONIC,HARNESS,TILLER,SC713,H-9763-005	1

Notes :

- *E1 The item is a quantity of one but is shown as several parts for assembly purposes.
- *F1 Refer to SECTION IV. Shroud Assembly - Tiller for the illustration and parts list.
- *G1 Refer to SECTION IV. Shroud Assembly - Tiller for the illustration and parts list.



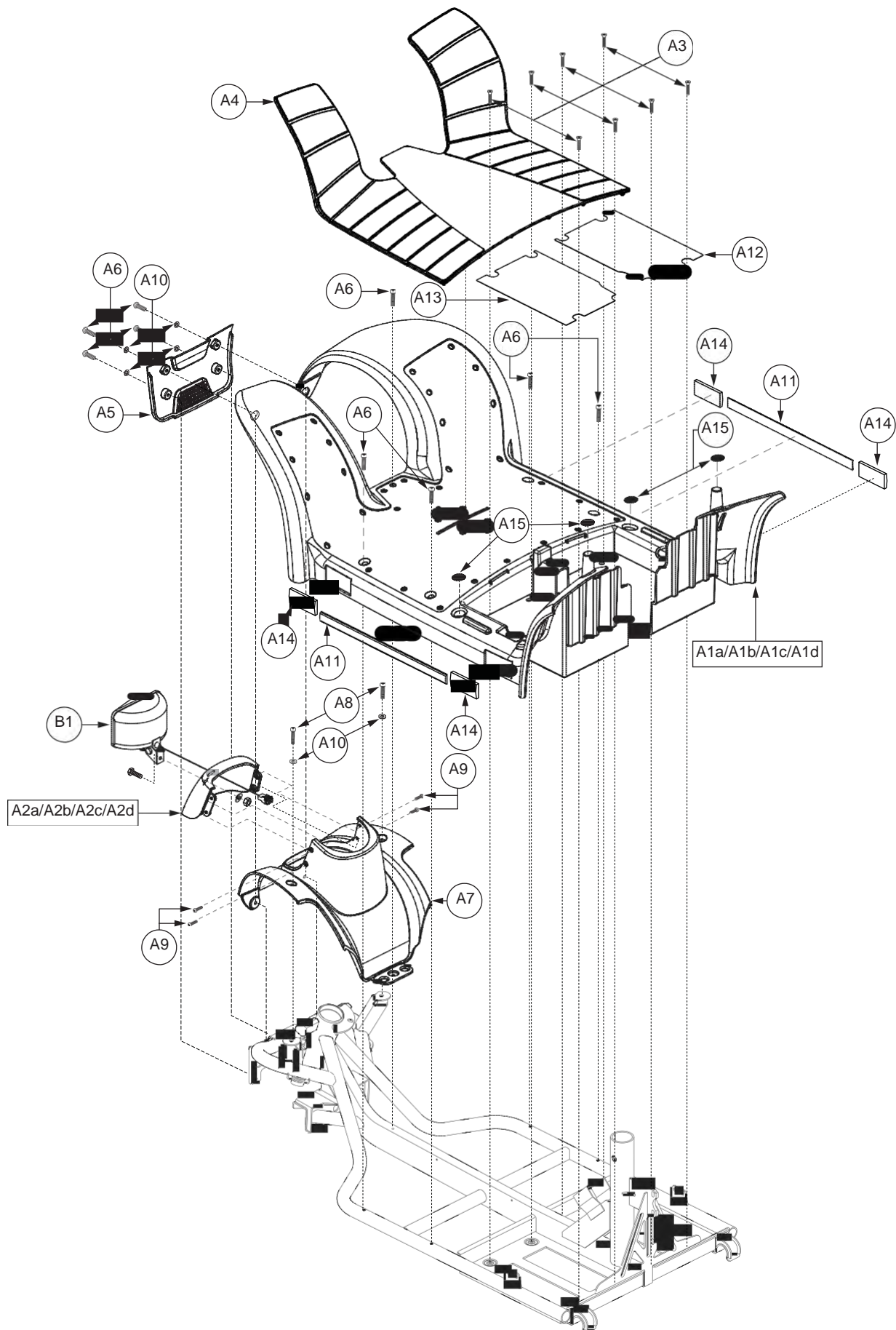
IV. Shroud Assembly — Tiller

REF #	PART #	DESCRIPTION	QTY
A1a - C8	SHDASMB5823	SHROUD,ASSY,TILLER,CANDY APPLE RED,SC713	1
A1a	DWR9763E019C	COVER,TILLER,PAINTED,CANDY APPLE RED,ABS,FRONT/BOTTOM,E-9763-019	1
A2a	DWR9763E020C	COVER,TILLER,PAINTED,CANDY APPLE RED,ABS,FRONT/TOP,E-9763-020	1
A1b - C8	SHDASMB5826	SHROUD,ASSY,TILLER,VIPER BLUE,SC713	1
A1b	DWR9763E019D	COVER,TILLER,PAINTED,VIPER BLUE,ABS,FRONT/BOTTOM,E-9763-019	1
A2b	DWR9763E020D	COVER,TILLER,PAINTED,VIPER BLUE,ABS,FRONT/TOP,E-9763-020	1
A1c - C8	SHDASMB5824	SHROUD,ASSY,TILLER,MERCURY SILVER,SC713	1
A1c	DWR9763E019B	COVER,TILLER,PAINTED,MERCURY SILVER,ABS,FRONT/BOTTOM,E-9763-019	1
A2c	DWR9763E020B	COVER,TILLER,PAINTED,MERCURY SILVER,ABS,FRONT/TOP,E-9763-020	1
A1d - C8	SHDASMB5825	SHROUD,ASSY,TILLER,ONYX BLACK,SC713	1
A1d	DWR9763E019A	COVER,TILLER,PAINTED,ONYX BLACK,ABS,FRONT/BOTTOM,E-9763-019	1
A2d	DWR9763E020A	COVER,TILLER,PAINTED,ONYX BLACK,ABS,FRONT/TOP,E-9763-020	1
A3	DWR9763D017	COVER,TILLER,BLACK,ABS,FRONT/CENTER,SC713,D-9763-017	1
B1 - B5	SHDASMB5822	SHROUD,ASSY,REAR TILLER,BLACK,OFF-BOARD CHARGER READY,SC713	1
B1	DWR9763E021	COVER,TILLER,BLACK,ABS,REAR,E-9763-021	1
B2	SCRPPH1050	SCREW,PPH,BLACK ZINC,M4-.7 X 10MM	6
B3	DWR9555H033	ELECTRONIC,HARNESS,OFF-BOARD CHARGER,XLR CONNECTOR,H-9555-033	1
B4	SCRPPH1144	SCREW,PPH,BLACK ZINC,M3-.5 X 12MM	2
B5	NUTNYLK1055	NUT,NYLOCK,ZINC,M3-.5	2
C1 - C8	ELEASMB5383	ELECTRONIC,ASSY,FUSE BLOCK,TILLER,SC610/SC710,H-9966-006	1
*C1	ELEASMB5483	ELECTRONIC,ASSY,FUSE BOX W/LID,SC610/SC710,C-9966-043	1
*C2	DWR9983C055	FUSE CLIP,TIN/ZINC,PLATED,SC40E/44E,C-9983-055	12
C3	ELEFUSE1011	ELECTRONIC,FUSE,10 AMP,ATO	1
C4	ELEFUSE1013	ELECTRONIC,FUSE,5 AMP,AUTOMOTIVE TYPE	1
C5	ELEFUSE1012	ELECTRONIC,FUSE,1AMP,AUTOMOTIVE TYPE	4
*C6	PLSTIE1001	TIE WRAP,BLACK,4"	1
C7	NUTNYLK1055	NUT,NYLOCK,ZINC,M3-.5	4
C8	SCRPPH1144	SCREW,PPH,BLACK ZINC,M3-.5 X 12MM	4
D1	DWR9763D018	TILLER,INSERT,LEVER ADJUST,LEFT,SC713,D-9763-018	1
E1	DWR9763D021	TILLER,INSERT,BRAKE LEVER,RIGHT,SC713,D-9763-21	1
F1 - F2	ELEASMB4801	BLINKER,ASSY,RIGHT,FLEXIBLE STALK,E-MARKED,SC4001/4401	1
F1	DWR9555H005	ELECTRONIC,HARNESS, TURN SIGNAL,RIGHT,E-MARKED,H-9555-005	1
*F2	LGTBULB1005	BULB,24V,MOTORCYCLE STYLE 1820	1
G1 - G2	ELEASMB4800	BLINKER,ASSY,LEFT,FLEXIBLE STALK,E-MARKED,SC4001/4401	1
G1	DWR9555H004	ELECTRONIC,HARNESS, TURN SIGNAL,LEFT,E-MARKED,H-9555-004	1
*G2	LGTBULB1005	BULB,24V,MOTORCYCLE STYLE 1820	1

Notes :

Top-level shroud assemblies designated with a lower-case letter will include the corresponding painted shroud. Painted shrouds are not available individually and must be purchased as part of an assembly. Parts without lower-case extensions will be included in all top-level assemblies.

- *C1 The item is a quantity of one but is illustrated as two parts for assembly purposes.
- *C2 Not shown.
- *C6 Not shown.
- *F2 Not shown.
- *G2 Not shown.

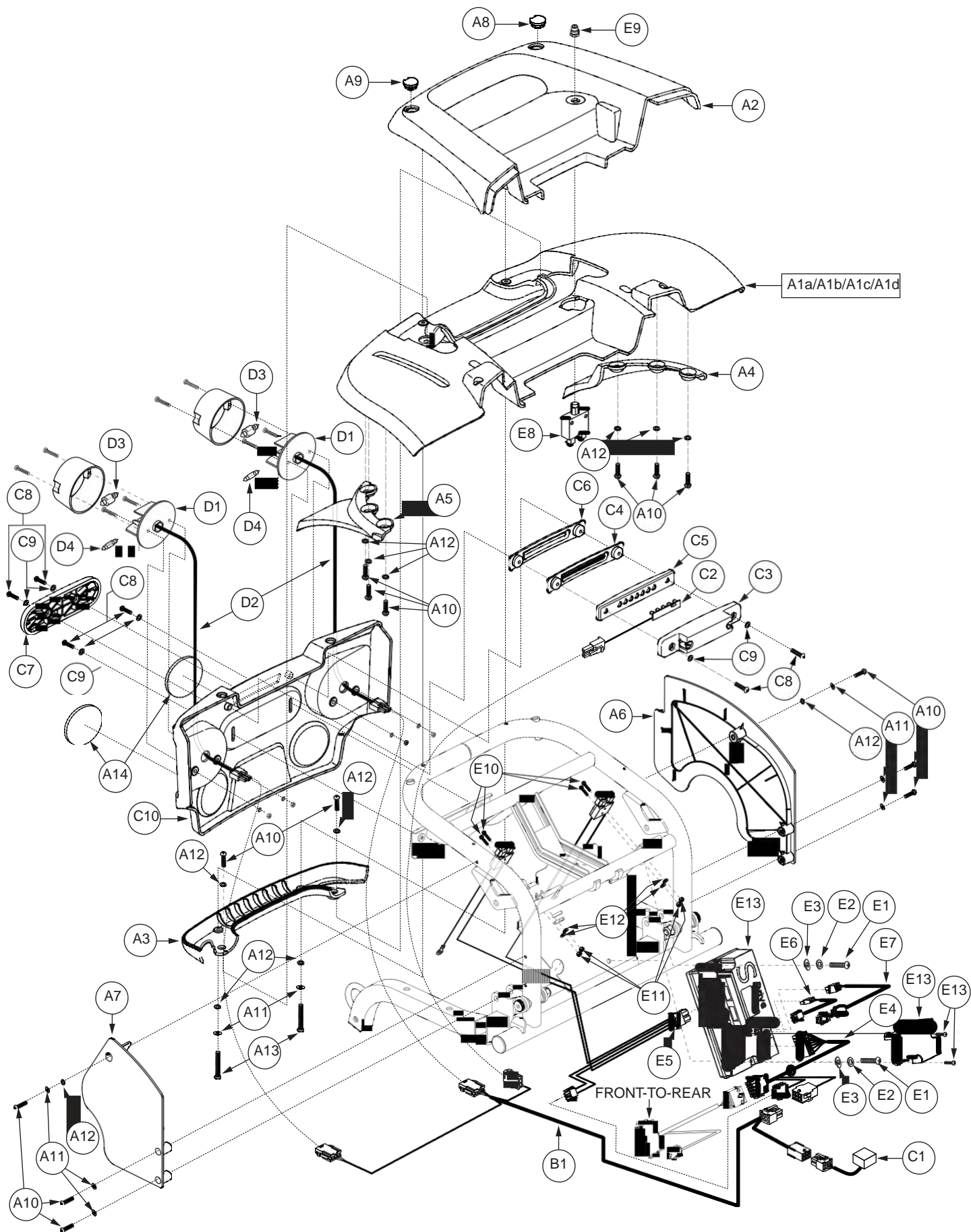


IV. Shroud Assembly — Front

REF #	PART #	DESCRIPTION	QTY
A1a - A15	SHDASMB5812	SHROUD,ASSY,FRONT BODY,CANDY APPLE RED,WITH BLACK FLOOR MAT,TREND MOBIL,SC713	1
A1a	DWR9763E015C	SHROUD,FRONT DECK,PAINTED,CANDY APPLE RED,E-9763-015	1
A2a	DWR9763E039C	SHROUD,ACCESS CAP,PUMPKIN,PAINTED,CANDY APPLE RED,E-9763-039	1
A1b - A15	SHDASMB5817	SHROUD,FRONT BODY,VIPER BLUE,WITH BLACK FLOOR MAT,TREND MOBIL,SC713	1
A1b	DWR9763E015D	SHROUD,FRONT DECK,PAINTED,VIPER BLUE,E-9763-015	1
A2b	DWR9763E039D	SHROUD,ACCESS CAP,PUMPKIN,PAINTED,VIPER BLUE,E-9763-039	1
A1c - A15	SHDASMB5814	SHROUD,ASSY,FRONT BODY,MERCURY SILVER,WITH BLACK FLOOR MAT,TREND MOBIL,SC713	1
A1c	DWR9763E015B	SHROUD,FRONT DECK,PAINTED,MERCURY SILVER,E-9763-015	1
A2c	DWR9763E039B	SHROUD,ACCESS CAP,PUMPKIN,PAINTED,MERCURY SILVER,E-9763-039	1
A1d - A15	SHDASMB5827	SHROUD,ASSY,FRONT BODY,ONYX BLACK,WITH BLACK FLOOR MAT,TREND MOBIL,SC713	1
A1d	DWR9763E015A	SHROUD,FRONT DECK,PAINTED,ONYX BLACK,E-9763-015	1
A2d	DWR9763E039A	SHROUD,ACCESS CAP,PUMPKIN,PAINTED,ONYX BLACK,E-9763-039	1
A3	SCRPFH1058	SCREW,PFH,BLACK ZINC,M4-.7 X 8MM	8
A4	DWR9763E013	MAT,FLOOR,BLACK,TPV,SC713,E-9763-013	1
A5	DWR9763E014	BUMPER,FRONT,BLACK,PLASTIC,E-9763-014	1
A6	SCRPPH1044	SCREW,PPH,BLACK ZINC,M4-.7 X 12MM	9
A7	DWR9763E016	SHROUD,PUMPKIN COVER,BLACK,PLASTIC,SC713,E-9763-016	1
A8	SCRPPH1318	SCREW,PPH,BLACK ZINC,M4-.7 X 16MM	2
A9	SCRPPH1036	SCREW,PPH,BLACK ZINC,M4-.7 X 8MM	4
A10	WASSTND1105	WASHER,FLAT,BLACK ZINC,M4	6
A11	PROMLDG1124	TRIM,SIDE,BLACK,370MM L X 22.2MM W,C-9763-066	2
A12	PROSCUF1065	SCUFF GUARD,BATTERY TRAY,BLACK,RIGHT,SC713,E-9763-037	1
A13	PROSCUF1066	SCUFF GUARD,BATTERY TRAY,BLACK,LEFT,SC713,E-9763-038	1
A14	REFYELO1000	REFLECTOR,YELLOW,2.75" X 1.23",SELF ADHESIVE,HELLA,E MARKED	4
A15	VELLOOP1057	REUSABLE FASTENER,LOOP,0.75" DIA.,W/ADHESIVE BACK	4
B1	ELEASMB4748	LIGHTING,LOWER HEADLIGHT,ASSY,HELLA,SC4001/4401,H-9555-024	1

Notes :

Top-level shroud assemblies designated with a lower-case letter will include the corresponding painted shroud. Painted shrouds are not available individually and must be purchased as part of an assembly. Parts without lower-case extensions will be included in all top-level assemblies.

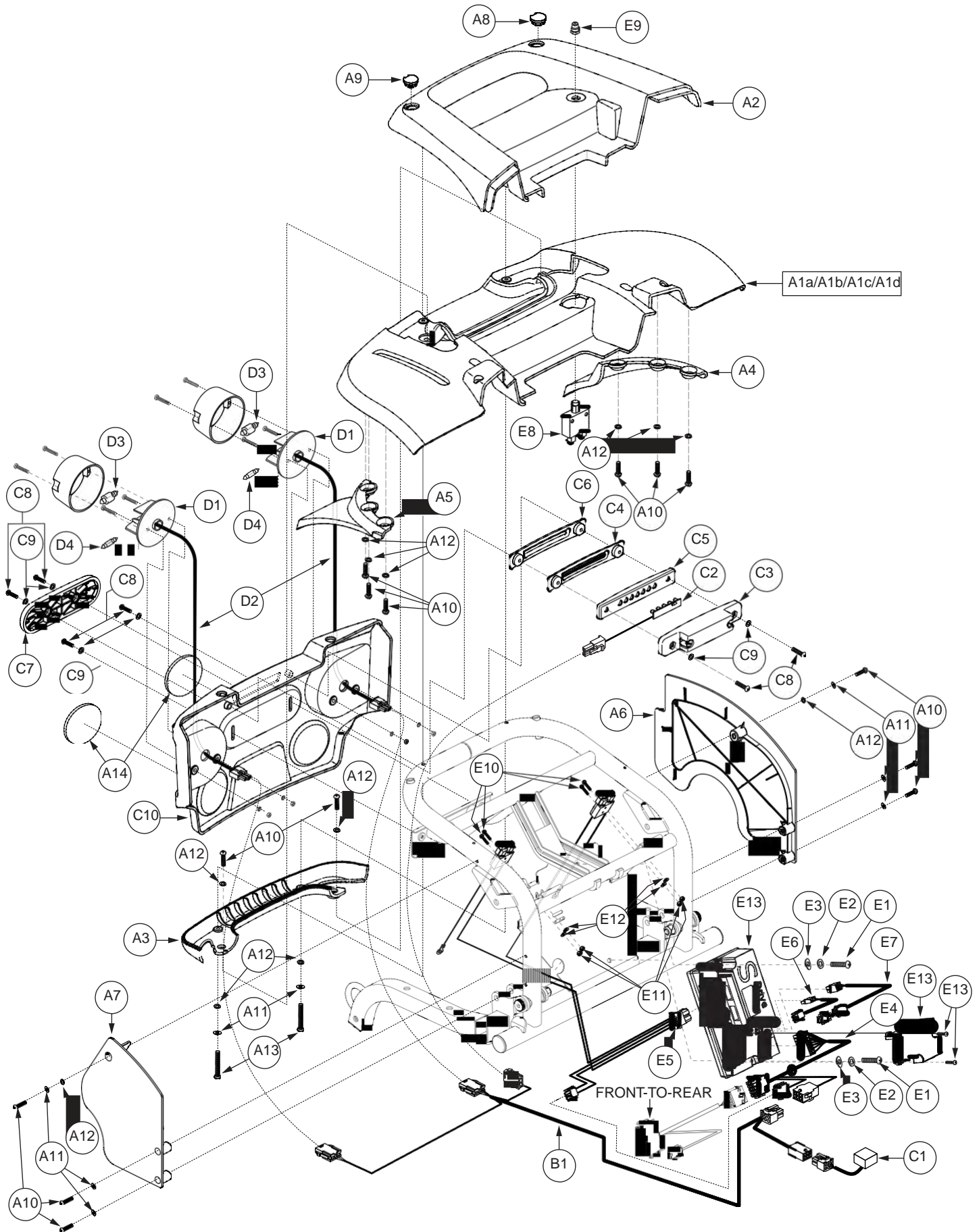


IV. Shroud Assembly — Rear w/Electronics

REF #	PART #	DESCRIPTION	QTY
A1a - A14	SHDASMB5818	SHROUD,ASSY,REAR BODY,CANDY APPLE RED,SC713	1
A1a	DWR9763E029C	SHROUD,REAR DECK,PAINTED,CANDY APPLE RED,E-9763-029	1
A1b - A14	SHDASMB5821	SHROUD,ASSY,REAR BODY,VIPER BLUE,SC713	1
A1b	DWR9763E029D	SHROUD,REAR DECK,PAINTED,VIPER BLUE,E-9763-029	1
A1c - A14	SHDASMB5819	SHROUD,ASSY,REAR BODY,MERCURY SILVER,SC713	1
A1c	DWR9763E029B	SHROUD,REAR DECK,PAINTED,MERCURY SILVER,E-9763-029	1
A1d - A14	SHDASMB5820	SHROUD,ASSY,REAR BODY,ONYX BLACK,SC713	1
A1d	DWR9763E029A	SHROUD,REAR DECK,PAINTED,ONYX BLACK,E-9763-029	1
A2	DWR9763E030	HANDLE, TOP, REAR, BLACK, ABS, E-9763-030	1
A3	DWR9763D029	HANDLE, BOTTOM, REAR, BLACK, PLASTIC, SC713, D-9763-029	1
A4	DWR9763E026	SHROUD, MUD FLAP, BLACK, PLASTIC, LEFT, E-9763-026	1
A5	DWR9763E027	SHROUD, MUD FLAP, BLACK, PLASTIC, RIGHT, E-9763-027	1
A6	DWR9763E024	SHROUD, FRONT, INTERIOR FENDER, BLACK, ABS, LEFT, E-9763-024	1
A7	DWR9763E025	SHROUD, FRONT, INTERIOR FENDER, BLACK, ABS, RIGHT, E-9763-025	1
A8	DWR9763C023	CAP, FLAG HOLDER, REAR, LEFT, C-9763-023	1
A9	DWR9763C024	CAP, FLAG HOLDER, REAR, RIGHT, C-9763-024	1
A10	SCRPPH1044	SCREW, PPH, BLACK ZINC, M4-.7 X 12MM	14
A11	WASLOCK1045	WASHER, LOCK, BLACK ZINC, M4, SPLIT	8
A12	WASSTND1105	WASHER, FLAT, BLACK ZINC, M4	12
A13	SCRPPH1330	SCREW, PPH, BLACK ZINC, M4-.7 X 35MM	2
A14	DWR1020C122	REFLECTOR, RED, 58MM OD X 6.5MM TH, W/ADHESIVE TAPE, C-1020-122	2
B1 - D4	ELEASMB6638	LIGHTING, REAR, ASSY, HELLA, SC713	1
B1	DWR9763H004	ELECTRONIC, HARNESS, INTERMEDIATE, REAR LIGHT, SC713, H-9763-004	1
C1 - C10	ELEASMB6637	LIGHTING, ASSY, REAR BRAKE, SC713	1
C1	DWR9966H028	ELECTRONIC, HARNESS, BRAKE LIGHT RELAY, SC610DX/SC710DX, H-9966-028	1
C2	DWR9763H008	ELECTRONIC, CIRCUIT BOARD, BRAKE LIGHT, SC713, H-9763-008	1
C3	DWR9763D025	LIGHT, REAR BRAKE LIGHT, HOUSING, D-9763-025	1
C4	DWR9763D026	LENS, REAR BRAKE LIGHT, SC713, D-9763-026	1
C5	DWR9763D027	LIGHT REFLECTOR, NATURAL, PLASTIC, LED BRAKE LIGHTS, D-9763-027	1
C6	DWR9763D024	CAP, REAR BRAKE LIGHT, SC713, D-9763-024	1
C7	DWR9763D028	BUMPER, REAR, INSERT, SC713, D-9763-028	1
C8	SCRPPH1050	SCREW, PPH, BLACK ZINC, M4-.7 X 10MM	6
C9	WASSTND1169	WASHER, FLAT, BLACK ZINC, 4.3MM ID X 9MM OD X 1MM THK	6
C10	DWR9763E028	BUMPER, REAR, BLACK, ABS, SC713, E-9763-028	1
D1 - D4	ELEASMB4795	LIGHTING, REAR, ASSY, LEFT/RIGHT, HELLA, DELUXE, E-MARKED, SC4001/4401	2
D1	LGTCLGT1008	LIGHT COMBO, AMBER/RED, E-MARKED, (HELLA #95926)	1
D2	DWR9555H002	ELECTRONIC, HARNESS, REAR LIGHT, HELLA, H-9555-002	1
D3	LGTBULB1019	LIGHT BULB, 10W, 24V, (HELLA #78207)	1
D4	LGTBULB1017	LIGHT BULB, 18W, 24V, (HELLA #78212)	1
E1 - E13	ELEASMB6632	ELECTRONIC, CONTROLLER, S-DRIVE, ASSY, 120 AMP, 15 KPH PROGRAM, SC713	1
E1	SCRPPH1103	SCREW, PPH, BLACK ZINC, M4-.7 X 25MM	2
E2	WASSTND1143	WASHER, FLAT, BLACK ZINC, 4.1MM ID X 9MM OD X 1MM TH	2
E3	WASLOCK1045	WASHER, LOCK, BLACK ZINC, M4, SPLIT	2

The parts list is continued on the subsequent pages.

IV. Shroud Assembly — Rear w/Electronics



IV. Shroud Assembly — Rear w/Electronics

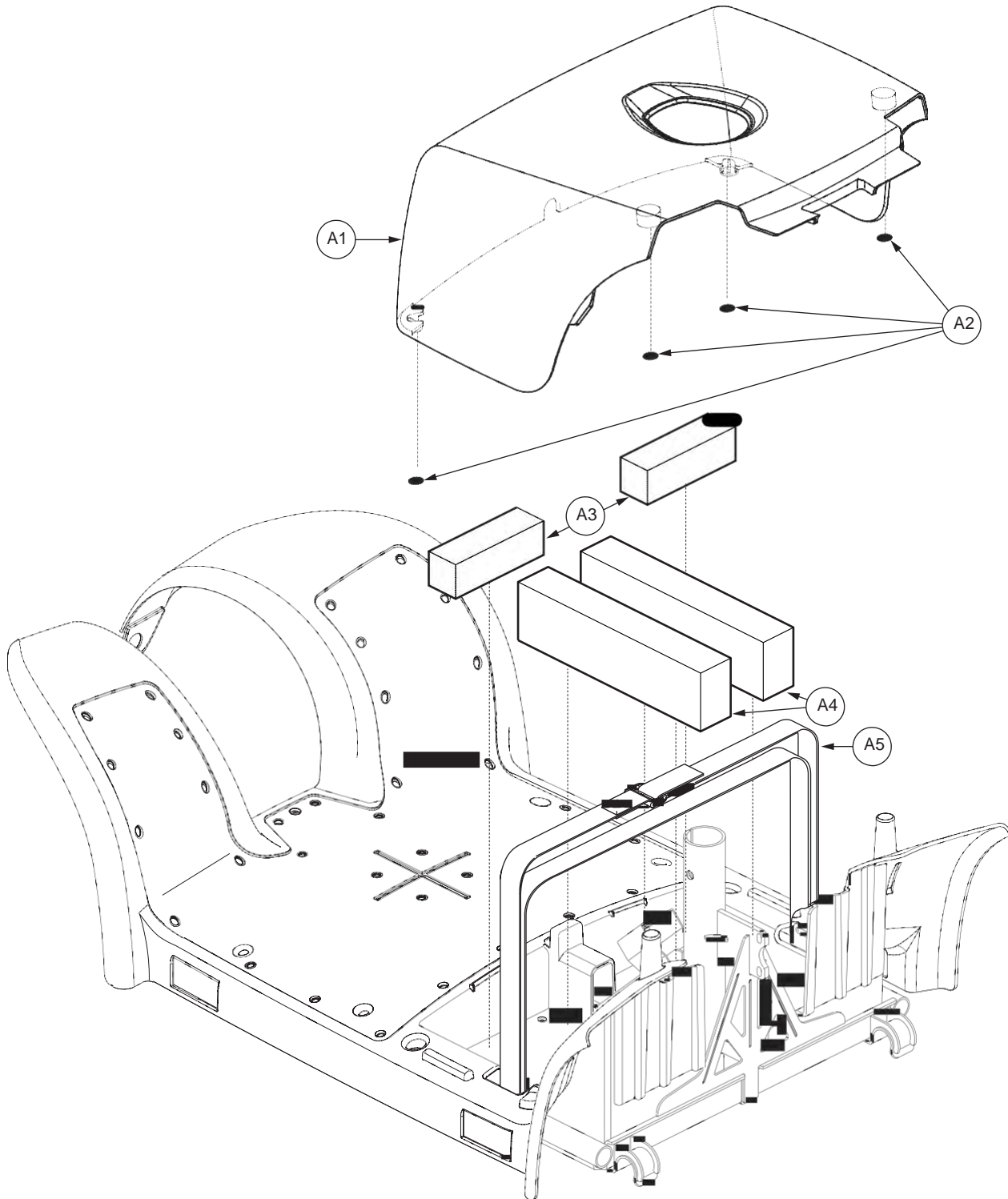
The parts list is continued from the previous pages.

REF #	PART #	DESCRIPTION	QTY
E4	DWR9763H002	ELECTRONIC,HARNESS,CONTROLLER INTERFACE,SC713,H-9763-002	1
E5	DWR9763H001	ELECTRONIC,HARNESS,BATTERY/BREAKER,SC713,H-9763-001	1
E6	DWR9660H086	ELECTRONIC,HARNESS,BRAKE,FOR 120/140 AMP S-DRIVE,H-9660-086	1
E7	DWR9555H038	ELECTRONIC,HARNESS,CONTROLLER PROGRAMMING,S-DRIVE,SC4001/SC4401,H-9555-038	1
E8	ELECBRK1015	ELECTRONIC,CIRCUIT BREAKER,60 AMP	1
E9	INDPART2148	COVER,12 X 1.25T,BREAKER BUTTON, W/NUT	1
E10	SCRPPH1371	SCREW,PPH,ZINC,M4-.7 X 30MM	4
E11	NUTNYLK1020	NUT,NYLOCK,ZINC,M4-.7	4
E12	WASLOCK1012	WASHER, LOCK,ZINC,M4	4
*E13	ELEASMB6592	CONTROLLER,ASSY,120 AMP,15 KPH PROGRAM,SC713	1

Notes :

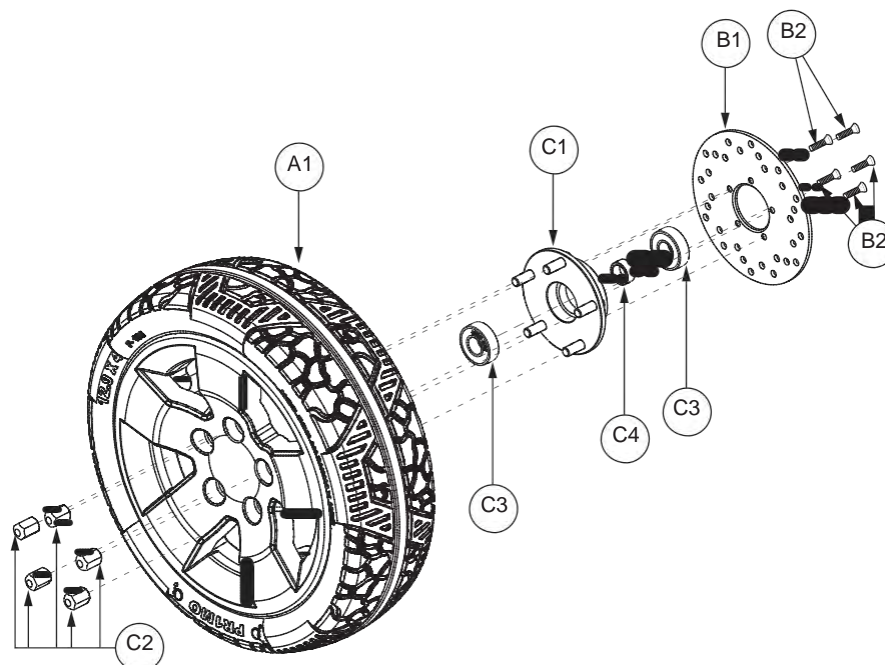
Top-level shroud assemblies designated with a lower-case letter will include the corresponding painted shroud. Painted shrouds are not available individually and must be purchased as part of an assembly. Parts without lower-case extensions will be included in all top-level assemblies.

*E13 This item is a quantity of one but is illustrated as multiple parts for assembly purposes.

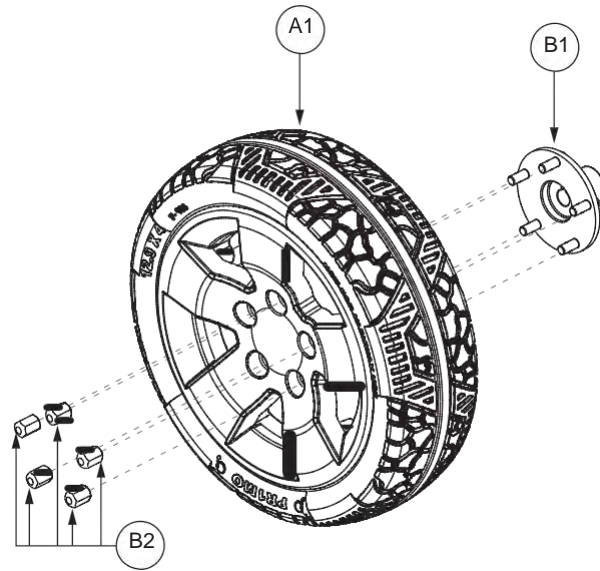


IV. Shroud Assembly — Battery

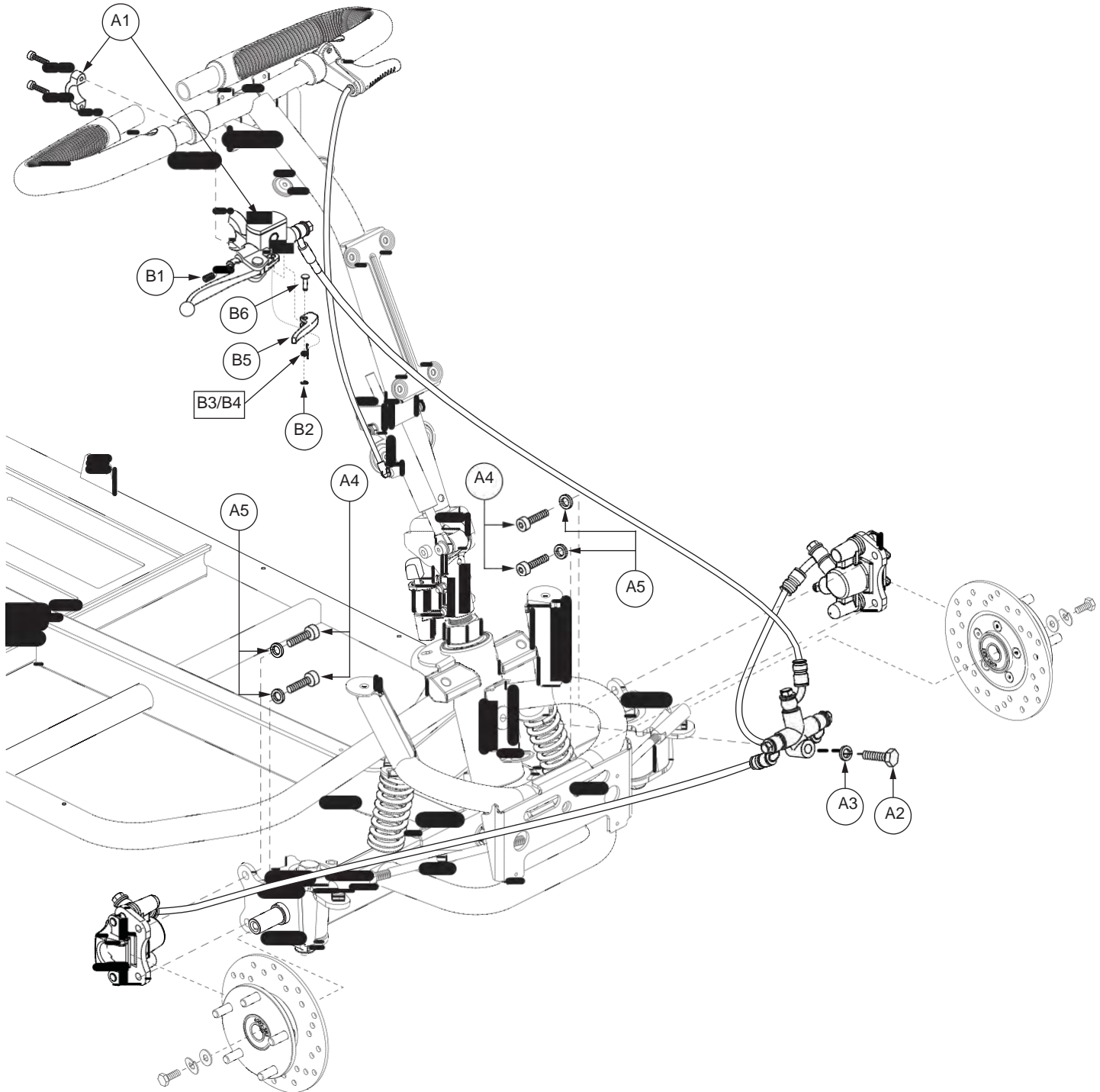
REF #	PART #	DESCRIPTION	QTY
A1 - A5	SHDASMB5802	SHROUD,ASSY,BATTERY BOX,BLACK,SC713	1
A1	DWR9763E012	SHROUD,BATTERY BOX,BLACK,PLASTIC,E-9763-012	1
A2	VELHOOK1065	REUSABLE FASTENER,HOOK,0.75" DIA.,W/ADHESIVE BACK	4
A3	DWR9763C076	BATTERY SPACER,BLACK,SMALL,SC713,C-9763-076	2
A4	DWR9763D054	BATTERY SPACER,BLACK,LARGE,SC713,D-9763-054	2
A5	DWR9763E046	STRAP,BLACK,80" LENGTH,BATTERY,SC713,E-9763-046	1



REF #	PART #	DESCRIPTION	QTY
A1 - C4	WHLASMB2018	WHEEL,ASSY,FRONT,BLACK TIRE/SILVER RIM,PU FOAM,13",W/HUB	2
A1	WHLASMB1998	WHEEL,ASSY,BLACK TIRE/SILVER RIM,PU FOAM,13",E-1203-029	1
B1 - C4	WHLASMB2004	WHEEL,ASSY,HUB,WITH BRAKE DISC,SC713,D-9762-040	1
B1	DWR9762D014	BRAKE,DISC,VICTORY XL,D-9762-014	1
B2	SCRSHFH1135	SCREW,SHFH,BLACK ZINC,M5-.8 X 18MM,GRADE 10.9,ISO 10642	5
C1 - C4	WHLASMB1909	WHEEL,ASSY,BRAKE HUB,VICTORY 130,C-9762-021	1
C1	DWR9762B025	WHEEL,HUB,FRONT,B-9762-025	1
C2	DWR1005B049	NUT,LUG,ZINC,5/16-24,B-1005-049	5
C3	BRGSLV1030	BEARING, SLEEVE,15MM ID X 35MM OD X 11MM THK,(PEER BEARING: 6202-2RS)	2
C4	BSHFLNG1071	BUSHING,FLANGE,BLACK,DELFIN,31.3MM ID X 37MM OD X 18.01MM TH X 43MM FOD X 3.0MM FTH,B-9762-030	1



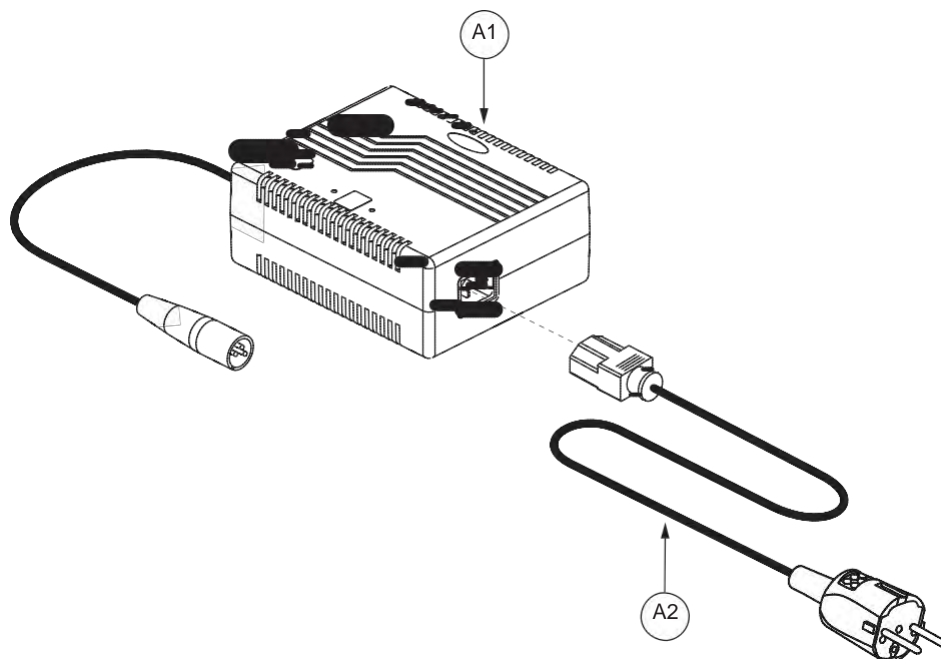
REF #	PART #	DESCRIPTION	QTY
A1 - B2	WHLASMB2019	WHEEL,ASSY,REAR,BLACK TIRE/SILVER RIM,PU FOAM,13",W/TAPERED HUB	2
A1	WHLASMB1998	WHEEL,ASSY,BLACK TIRE/SILVER RIM,PU FOAM,13",E-1203-029	1
B1 - B2	WHLASMB2006	WHEEL,ASSY,HUB,REAR,TAPERED,SC713,B-1203-009	1
B1	DWR1203B008	WHEEL,HUB,REAR,TAPERED,SC713,B-1203-008	1
B2	DWR1005B049	NUT,LUG,ZINC,5/16-24,B-1005-049	5



REF #	PART #	DESCRIPTION	QTY
A1 - B6	FRMASMB15312	HANDBRAKE,ASSY,HYDRAULIC,WITH LEVER,RIGHT,SC713	1
*A1	FRMASMB14265	BRAKE,ASSY,FRONT,COMPLETE,HYDRAULIC,SC713	1
A2	SCRHHCS1287	SCREW,HHCS,BLACK ZINC,M8-1.25 X 35MM,GRADE 10.9	1
A3	WASLOCK1039	WASHER,LOCK,BLACK ZINC,M8,SPLIT	1
A4	SCRSHCS1294	SCREW,SHCS,BLACK ZINC,M8-1.25 X 14MM,GRADE 12.9	4
A5	WASLOCK1059	WASHER,LOCK,BLACK ZINC,M8	4
B1 - B6	FRMASMB14426	BRAKE,ASSY,HANDBRAKE,RIGHT,SC713,B-9763-035	1
B1	SCRSETS1134	SCREW,SET,BLACK ZINC,M6-1.0 X 18MM L,EXTENDED POINT	1
B2	RNGRTAN1055	RING,RETAINING,EXTERNAL,BLACK ZINC,SPRING STEEL,4MM SHAFT DIA,3.2MM GROOVE DIA,6.9MM OD, X 0.60MM THK,E-STYLE	1
B3	DWR9763C071	SPRING,TORSION,HANDBRAKE,RIGHT,SC713,C-9763-071	1
B4	DWR9763C072	SPRING,TORSION,HANDBRAKE,LEFT,SC713,C-9763-072	1
B5	DWR9763C070	LEVER,GRAY,NYLON,HANDBRAKE,SC713,C-9763-070	1
B6	DWR9763B034	PIN,HANDBRAKE,SC713,B-9763-034	1

Notes :

*A1 The item is a quantity of one but is illustrated as multiple parts for assembly purposes.



REF #	PART #	DESCRIPTION	QTY
A1 — A2	ELEASMB6295	CHARGER, ASSY, OFFBOARD, 100V-240V, 5 AMP, BATTERY MAXIMIZER, W/EUROPEAN POWERCORD	1
A1	ELECHG1021	CHARGER, OFFBOARD, 100V-240V, 5 AMP, H-1010-142, (BATTERY MAXIMIZER: A24050-2)	1
A2	HARUSHD2160	ELECTRONIC, HARNESS, POWER CORD, IEC - EUROPE PLUG	1

REF #	PART #	DESCRIPTION	QTY
*N/A	DECASMB2170	DECAL,ASSY,SC713,ITALY	1
*N/A	DWR1235L390	DECAL,LOGO,SIDE,VICTORY XL 130,L-1235-390	2
*N/A	DWR1235L153	DECAL,LOGO,PRIDE,SC610/SC710,L-1235-153	1
*N/A	DWR9966C072	DECAL,TILLER BADGE,PRIDE,SC610/SC710,C-9966-072	1
*N/A	DECSERN1035	DECAL,SERIAL NUMBER,2" X 1.25",BARCODE, MADE IN CHINA, W/PRIDE LOGO	1
*N/A	DWR1234L108	DECAL,ICON,CHARGE BATTERY BEFORE START,L-1234-108	1
*N/A	DWR1235L278	DECAL,ICON,DO NOT ADJUST ANTI-TIP,2.16" X 0.75",L-1235-278	2
*N/A	DWR1235L379	DECAL,TILLER LEVER OPERATION,SC713,L-1235-379	1
*N/A	DWR1235L380	DECAL,BATTERY CONNECTION,SC713,L-1235-380	1
*N/A	DWR1235L381	DECAL,FREEWHEEL LEVER,UP AND DOWN POSITION,INCLINE/DECLINE ANGLE WARNING,READ OWNER'S MANUAL,SC713,L-1235-381	1
*N/A	DWR1235L382	DECAL,"CONTAINS NON-SPILLABLE BATTERIES",SC713,L-1235-382	1
*N/A	DWR1235L383	DECAL,FORWARD-REVERSE,WIG-WAG SIDE CONSOLE,SC713,L- 1235-383	1
*N/A	DWR1020L006	DECAL,CONTROLLER/CHARGER INFORMATION	1
*N/A	DWR1235L061	DECAL,BATTERY WARNINGS,L-1235-061	1
*N/A	DECINDV1022	DECAL,PATENT PENDING,3/8" X 2 1/4"L,L-1234-100	1
*N/A	DWR1235L149	DECAL,FUSE BOX LABEL,SC610/SC710,L-1235-149	1
*N/A	DWR1235L039	DECAL,CAUTION,"KEEP AREA CLEAN & DRY",SC53/SC54,L-1235- 039	1
*N/A	DWR1234L008	DECAL,ICON,EXTENSION CORD/GROUNDING PRONG,L-1234-008	1
*N/A	DWR1234L233	DECAL,BATTERY CABLE LABEL,NEGATIVE,L-1234-233	2
*N/A	DWR1234L234	DECAL,BATTERY CABLE LABEL,POSITIVE,L-1234-234	2
*N/A	DWR1234L907	DECAL,WARNING,"NOT A BRAKE",SC4001DX,L-1234-907	1
*N/A	DECINDV1236	DECAL,1 3/4"L X 1/2"H,ELECTRICAL APPROVAL,C-TICK DECAL,SILVER,L-1234-569	1
*N/A	DWR1235L420	DECAL,DATA PLATE,VICTORY XL 130,ITALY,L-1235-420	1
*N/A	DWR1234L649	DECAL,MANUFACTURER ADDRESS INFORMATION,PRIDE UNITED STATES,L-1234-649	1
*N/A	DWR1235L162	DECAL,WARNING,READ OWNER'S MANUAL/EMI 20V/M/350 LBS. WEIGHT CAPACITY,LOOSE GARMENTS,L-1235-162	1
*N/A	DWR1235L400	DECAL,STEP #1 & STEP #2 HARNESS DISCONNECT/PINCH POINT/READ OWNER'S MANUAL,L-1235-400	1
*N/A	DWR1235L401	DECAL,STEP #1 FRONT-TO-REAR WRAP AROUND,L-1235-401	2
*N/A	DWR1235L402	DECAL,STEP #1 FRONT-TO-REAR FOLD OVER,L-1235-402	2
*N/A	DWR1235L403	DECAL,STEP #2,BATTERY DISCONNECT,L-1235-403	2
*N/A	DWR1234L557	DECAL,HANDLE RELEASE,STEP #2,L-1234-557	2

Notes :

*N/A Not applicable.

VIII. Decal Package — Europe

REF #	PART #	DESCRIPTION	QTY
*N/A	DECASMB2167	DECAL,ASSY,SC713,EUROPE	1
*N/A	DWR1235L390	DECAL,LOGO,SIDE,VICTORY XL 130,L-1235-390	2
*N/A	DWR1235L153	DECAL,LOGO,PRIDE,SC610/SC710,L-1235-153	1
*N/A	DWR9966C072	DECAL,TILLER BADGE,PRIDE,SC610/SC710,C-9966-072	1
*N/A	DECSERN1035	DECAL,SERIAL NUMBER,2" X 1.25",BARCODE, MADE IN CHINA, W/PRIDE LOGO	1
*N/A	DWR1234L108	DECAL,ICON,CHARGE BATTERY BEFORE START,L-1234-108	1
*N/A	DWR1235L278	DECAL,ICON,DO NOT ADJUST ANTI-TIP,2.16" X 0.75",L-1235-278	2
*N/A	DWR1235L379	DECAL,TILLER LEVER OPERATION,SC713,L-1235-379	1
*N/A	DWR1235L380	DECAL,BATTERY CONNECTION,SC713,L-1235-380	1
*N/A	DWR1235L381	DECAL,FREEWHEEL LEVER,UP AND DOWN POSITION,INCLINE/DECLINE ANGLE WARNING,READ OWNER'S MANUAL,SC713,L-1235-381	1
*N/A	DWR1235L382	DECAL,"CONTAINS NON-SPILLABLE BATTERIES",SC713,L-1235-382	1
*N/A	DWR1235L383	DECAL,FORWARD-REVERSE,WIG-WAG SIDE CONSOLE,SC713,L-1235-383	1
*N/A	DWR1020L006	DECAL,CONTROLLER/CHARGER INFORMATION	1
*N/A	DWR1235L061	DECAL,BATTERY WARNINGS,L-1235-061	1
*N/A	DECINDV1022	DECAL,PATENT PENDING,3/8" X 2 1/4"L,L-1234-100	1
*N/A	DWR1235L149	DECAL,FUSE BOX LABEL,SC610/SC710,L-1235-149	1
*N/A	DWR1235L039	DECAL,CAUTION,"KEEP AREA CLEAN & DRY",SC53/SC54,L-1235-039	1
*N/A	DWR1234L008	DECAL,ICON,EXTENSION CORD/GROUNDING PRONG,L-1234-008	1
*N/A	DWR1234L233	DECAL,BATTERY CABLE LABEL,NEGATIVE,L-1234-233	2
*N/A	DWR1234L234	DECAL,BATTERY CABLE LABEL,POSITIVE,L-1234-234	2
*N/A	DWR1234L907	DECAL,WARNING,"NOT A BRAKE",SC4001DX,L-1234-907	1
*N/A	DWR1235L421	DECAL,DATA PLATE,VICTORY XL 130,EUROPE,L-1235-421	1
*N/A	DECINDV1236	DECAL,1 3/4"L X 1/2"H,ELECTRICAL APPROVAL,C-TICK DECAL,SILVER,L-1234-569	1
*N/A	DWR1234L649	DECAL,MANUFACTURER ADDRESS INFORMATION,PRIDE UNITED STATES,L-1234-649	1
*N/A	DWR1235L162	DECAL,WARNING,READ OWNER'S MANUAL/EMI 20V/M/350 LBS. WEIGHT CAPACITY,LOOSE GARMENTS,L-1235-162	1
*N/A	DWR1235L400	DECAL,STEP #1 & STEP #2 HARNESS DISCONNECT/PINCH POINT/READ OWNER'S MANUAL,L-1235-400	1
*N/A	DWR1235L401	DECAL,STEP #1 FRONT-TO-REAR WRAP AROUND,L-1235-401	2
*N/A	DWR1235L402	DECAL,STEP #1 FRONT-TO-REAR FOLD OVER,L-1235-402	2
*N/A	DWR1235L403	DECAL,STEP #2,BATTERY DISCONNECT,L-1235-403	2
*N/A	DWR1234L557	DECAL,HANDLE RELEASE,STEP #2,L-1234-557	2

Notes :

*N/A Not applicable.

REF #	PART #	DESCRIPTION	QTY
*N/A	INDASMB1915	OWNER'S PACKAGE,SC713,ITALY	1
*N/A	INFMANU3889	MANUAL,OWNER'S,SC713,ITALY	1
*N/A	INFINFB1142	MANUAL,OWNER'S,WARRANTY CARD,ITALIAN	1
*N/A	INFINFB2339	MANUAL,QUICK START GUIDE,VICTORY XL,ITALIAN	1
*N/A	KEYSCO1007	KEY,COATED, A126	1
*N/A	DWR1020C034	KEY,DELUXE,W/MOLDED PLASTIC KNOB,EASY PULL,C-1020-034	1
*N/A	DWR1234L422	HANG TAG,FULLY CHARGE BATTERIES/READ OWNER'S MANUAL/LIFT WARNING,ICON,SCOOTER,L-1234-422	1
*N/A	DWR1020L013	HANG TAG,ROUND,"MADE IN CHINA", DISTRIBUTED GLOBALLY,L-1020-013	1
*N/A	DWR1234L439	HANG TAG,ICON,EMI-RFI,20V/M,GENERIC,L-1234-439	1
*N/A	PINCLEV1005	CLEVIS PIN,ZINC PLATED,3/8" X 2"	1
*N/A	ELEASMB6607	ELECTRONIC,ASSY,BATTERY CABLE,GRAY,W/125A/32V FUSEABLE LINK,QUICK DISCONNECT,SC713,H-9763-011	2
*N/A	DWR9763C065	TOOL,SHOCK,SC713,C-9763-065	1

Notes :

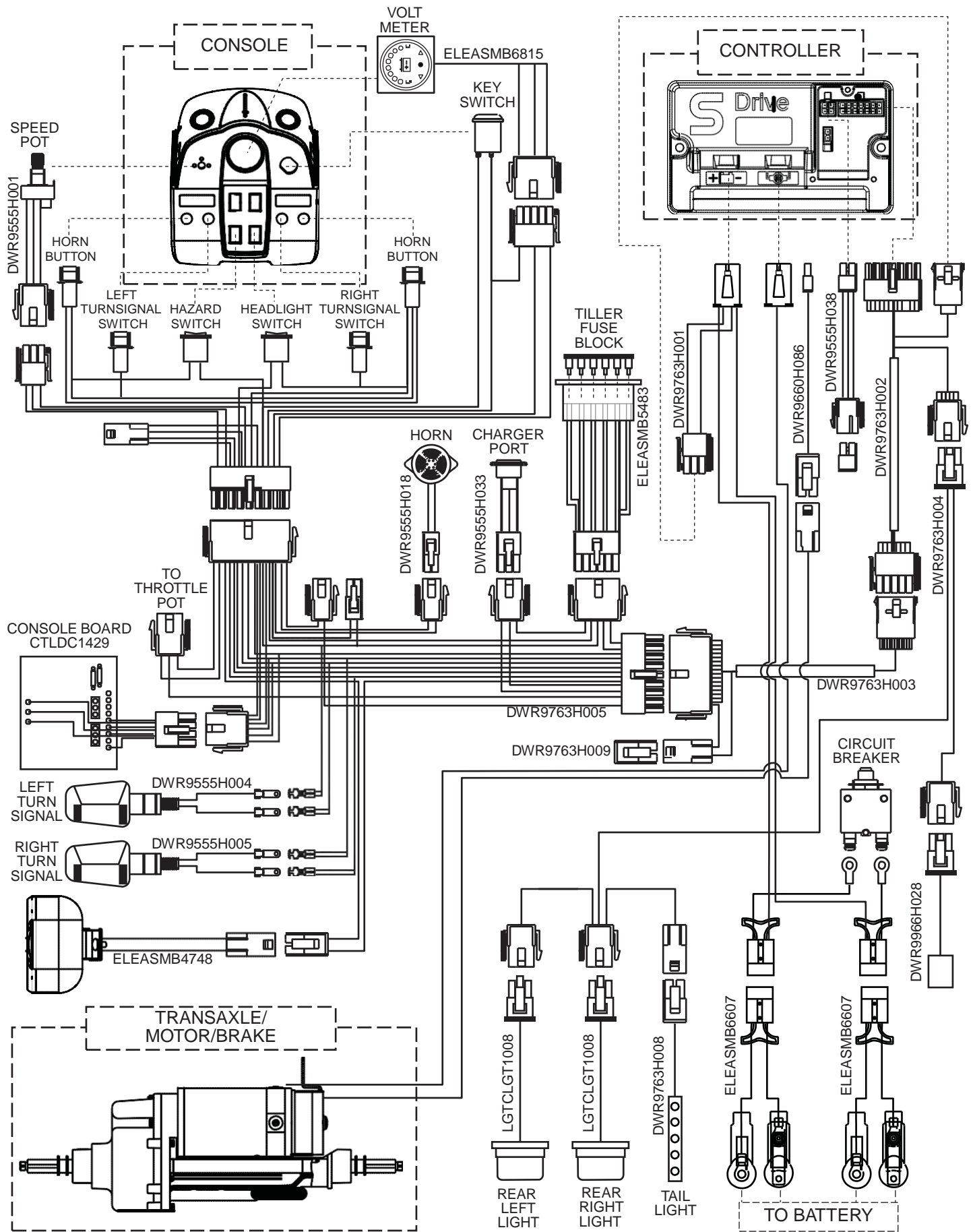
*N/A Not applicable.

REF #	PART #	DESCRIPTION	QTY
*N/A	INDASMB1912	OWNER'S PACKAGE,SC713,EUROPE (ENGLISH)	1
*N/A	INFMANU3886	MANUAL,OWNER'S,SC713,EUROPE (ENGLISH)	1
*N/A	INFINFB2089	MANUAL,OWNER'S,WARRANTY CARD,EUROPE-ENGLISH	1
*N/A	KEYSCO1007	KEY,COATED, A126	1
*N/A	DWR1020C034	KEY,DELUXE,W/MOLDED PLASTIC KNOB,EASY PULL,C-1020-034	1
*N/A	DWR1234L422	HANG TAG,FULLY CHARGE BATTERIES/READ OWNER'S MANUAL/LIFT WARNING,ICON,SCOOTER,L-1234-422	1
*N/A	DWR1020L013	HANG TAG,ROUND,"MADE IN CHINA", DISTRIBUTED GLOBALLY,L-1020-013	1
*N/A	DWR1234L439	HANG TAG,ICON,EMI-RFI,20V/M,GENERIC,L-1234-439	1
*N/A	PINCLEV1005	CLEVIS PIN,ZINC PLATED,3/8" X 2"	1
*N/A	ELEASMB6607	ELECTRONIC,ASSY,BATTERY CABLE,GRAY,W/125A/32V FUSEABLE LINK,QUICK DISCONNECT,SC713,H-9763-011	2
*N/A	DWR9763C065	TOOL,SHOCK,SC713,C-9763-065	1

Notes :

*N/A Not applicable.

A. Electrical System Diagram





Pride

Mobility Products Corp.

www.pridemobility.com

Pride Mobility Products® Corporation

182 Susquehanna Avenue
Exeter, PA 18643
USA

Pride Mobility Products® Company

380 Vansickle Road, Unit 350
St. Catharines, Ontario L2R 6P7
Canada

Pride Mobility Products® Ltd.

32 Wedgwood Road
Bicester, Oxon OX26 4UL
UK

Pride Mobility Products® Australia Pty. Ltd.

21 Healey Road
Dandenong, 3175
Victoria, Australia

Pride Mobility Products® Italia S.r.l.

Via del Porgresso - ang. Via del Lavoro
Loc. Prato della Corte
00065 - Fiano Romano (RM)

Pride Mobility Products® Europe B.V.

Castricummer Werf 26
1901 RW Castricum
The Netherlands